

Authors

Wesley IMMS and Terry BYERS

Title

Evidence concerning the impact of classroom design on teacher pedagogy, and student engagement and performance in mathematics

Affiliations

The University of Melbourne, The University of Melbourne

Contact address

(Contact author) Dr Wesley IMMS, Melbourne Graduate School of Education, The University of Melbourne. 324 Queensberry Street, PARKVILLE 3010 Victoria.
wesleyi@unimelb.edu.au

Mr Terry BYERS, Anglican Church Grammar School, Oaklands Parade, East Brisbane.

Abstract.

A resurgence in interest in classroom and school design has highlighted how little we know about the impact of learning environments on student and teacher performance. This is partly due to lack of research methods capable of controlling the complex variables inherent to space and education. In a unique study that overcame such difficulties by using a single-subject research design (SSRD), one Queensland school found that open and flexible classroom arrangements, together with an infusion of one-on-one technologies, improved student perceptions of the quality of teaching and students' levels of engagement. Separate statistical analysis also indicated significant differences in these students' performances in mathematics, when compared to like peers in more 'traditional' classrooms. The paper ends with a caution; on these measures, the classroom design is certainly one, but likely not the only, influence.

Keywords

Learning environment evaluation methods; Teacher performance in flexible learning environments; Student performance in flexible learning environments

Introduction

The Anglican Church Grammar School in Brisbane (usually known as Churchie) is an independent all-boy K-12 school with plans for significant learning environment development over the next few years. This architectural development coincided with quickly evolving sector-wide technological advancements that were challenging traditional teaching methodologies in this school. Churchie wished to ensure that future building programs and investment in new technologies would benefit students by positively impacting future teaching pedagogies, student learning and student engagement.

To help inform these decisions, Churchie embarked on a combined retrofit and research strategy. The initial step was to trial and evaluate three types or ‘modes’ of learning spaces (Fisher, 2006), with a particular focus on how they accommodated use of technology. Four research questions addressed this process; (1) Does the mode of the classroom impact teacher use of 1:1 technology? (2) Does the mode of the classroom have an effect on the perceptions of quality teaching? (3) Does altering the learning mode have an effect on student engagement? (4) Is there a link between the classroom learning space and student achievement in mathematics? Churchie collaborated in this research with Melbourne University’s Learning Environments Applied Research Network (LEaRN), an industry/academic initiative established in 2009 by that university’s Faculties of Education and Architecture. LEaRN’s primary mandate has been to utilise quality research to underpin learning space design and use across all educational sectors.

This paper discusses the implementation and results of this collaborative project. In that initiative, three classes of grade 7 students at Churchie together with their home group teacher spent a term in each of three classrooms that were remodelled by the school prior to this research. The first classroom saw little change from the traditional teacher-centred classroom space, common to this school. The second classroom was altered to facilitate student-centred learning, typified by group work and informal interchanges with teachers and other students. The third classroom combined the flexibility of traditional and casual furniture with the integration of digital and visual technologies to create a dynamic and interactive 360° or *polycentric* learning space (Lippman, 2013; Monahan, 2002). The aim was to create a highly dynamic and adaptive space, which was aligned with the affordance of digital and visual technologies to facilitate more personalised and responsive learning experiences. With the generous support of the teachers who used those rooms with the three classes, this arrangement provided the platform for a short but effective study addressing the issue of how teachers and students utilise space in their teaching and learning.

Context

In recent years, rapid advancements in technology have coincided with Australian federal and state government school re-development initiatives to significantly advance innovative learning environments. The physical environments of many educational institutions either now or in the near future will have at their disposal three modes of learning spaces; 'formal' or traditional classrooms focused on largely didactic pedagogy (Fisher's 2006 'mode 1' space), student-centred spaces focused on transactional approaches to instruction (mode 2), and the 'thirdspace', where social activities overlap informal and active learning activities in spaces such as covered outdoor learning areas, hallway 'nooks', and lounge-styled rooms (mode 3) (Brooks, 2011; Fisher, 2003; Soja, 1996). Combined with the recent proliferation of digital technology, particularly mobile technologies, wireless and e-learning systems, these new learning environments provide the infrastructure to inspire teachers to reconceptualisation and rethink the possibilities of the teaching and learning equation (Alterator & Deed, 2013). The adaptation of the three classrooms used in this study adhered to these three modalities.

Towards the end of 2010 Churchie was certainly moving in this direction, being a school where significant advancements in the use of digital technology were already established. Since 2009 this school had required students to own a tablet that allowed teachers to develop teaching resources, deliver curriculum and assess student knowledge on a 1:1 basis. Microsoft OneNote was used for real-time collaboration between multiple users, while DyKnow enabled teachers to connect to student tablets in 'teacher-whole class', 'teacher-individual student' and 'student-student' modalities. Together, these software platforms allowed for synchronous formative and summative assessment, which in turn enabled teachers to track student learning outcomes, give formative feedback and record student progress. However, at Churchie these noteworthy initiatives occurred in learning environments that had changed little in the school's hundred-year lifespan. The classroom settings at the time this study were arranged in a 'front-of-class' orientation of desks and teacher equipment, tables arranged to suit a didactic approach to instruction, and limited opportunities for student interaction and group-focused activities.

Churchie was not alone in retaining century-old styles of learning environments. This was understandable, as scant evidence existed that expensive fit-outs actually impacted the way teachers taught and how students learnt (Brooks, 2011; Walker, Brooks, & Baepler, 2011); a paucity of knowledge that motivated this study. Churchie required empirical evidence that investment in modern learning environments would be justified by their capacity to improve student engagement and learning outcomes. Scant evidence existed to make this case. Hattie's (2009) well cited conclusion that space did not impact learning actually reported a lack of evidence, certainly not findings from research that explicitly found no causal link. Literature reviews by Cleveland and Fisher (2014) Blackmore, Bateman, O'Mara, and Loughlin (2011) and others lamented how few were the empirical studies that

investigated the impact of learning environments on student experiences and outcomes. Painter et al. (2013) blamed this paucity on the complex variables inherent to education that made randomised control trials or good quasi-experimental studies difficult to implement. Alterator and Deed (2013) summarised the pervading sentiment among researchers on this topic by suggesting qualitative studies that focused on affective issues were the preferable solution. Unfortunately for Churchie, however, measures of effective outcomes were required to support changes within their school. This required the development of innovative methodological approaches to quantify the impact of learning spaces on teacher performance, student engagement, and student learning outcomes.

The reason for this was common to all schools, not just Churchie. In recent years the re-conceptualising and inhabiting of new spaces had moved at an unprecedented pace, but teachers' abilities to utilise them efficiently had not always matched this growth. A literature review (Abbassi & Fisher, 2010) suggested that many teachers had poor 'environmental competence', thus the limited capacity to know how to "... understand and effectively use physical instructional space for a pedagogical advantage" (Lackney, 2008, p.133). Even when in new learning spaces, teachers would persist with traditional elements of direct instruction, either due to a limited awareness and ability to utilise the physical elements of the classrooms they were given, or a tendency to over emphasise the need to 'control' student behaviour (Lackney, 2008). Influenced by unprecedented spending on school infrastructure brought about by this country's Building the Education Revolution (BER), teachers had been challenged to re-skill in order to maximise the instructional use of new learning environments. Given the paucity of empirical evidence on 'what works' this has been a daunting task - particularly when the factor of new technologies is added to the repertoire of skills to be mastered. This growth has occurred in a climate where little effective evaluation has been done regarding how teachers utilise these spaces, and their impact on students' learning and engagement. The study addressed this shortfall in knowledge.

The Study

Design and Procedure

There existed a sense of serendipity in terms of the implementation of this project. It is rare in education that a quasi-experimental design of this nature can be implemented, given the complexity of issues inherent to the school setting. These issues, such as the need to maintain equality of learning experiences, ensuring teacher participation, and meeting the school's operational requirements, often thwarts such research approach (Blackmore et al., 2011). In this instance, the school's curriculum structure that saw year 7 students being predominantly taught in one room with (mostly) one teacher, the teachers' willingness to participate, and a desire by the school to facilitate research on this topic created a scenario within which the project was successfully implemented.

Three modes of classrooms, occupied by three year 7 classes, being taught like-curricula, while each maintaining the same classroom teacher throughout each intervention reduced extraneous variables to a considerable degree. This allowed the study to focus on differences caused by changes in the classroom designs (the interventions). The study utilised a single-subject research design (SSRD). SSRD are powerful studies, used regularly in the applied medical sciences, where repeated measures of identifiable actions by an individual are gathered across a number of interventions (Horner et al., 2005). The aim is to establish a functional relationship between the manipulation of these interventions and the subsequent effect on the dependent variables (Horner et al., 2005). This study established this relationship by selecting three classes, which acted as their own control, baseline and unit of analysis (Cakiroglu, 2012; Horner, Swaminathan, & George, 2012). This negated the threats of between-subject variability (Horner et al., 2005) and the selection and testing internal validity threats (Rindskopf, 2014).

A synthesised alternating treatment and withdrawal design collected empirical data across a baseline (mode 1) and two interventions (mode 2 and 3) (Cakiroglu, 2012). In reality this procedure was deceptively simple. Two year 7 classes had their main classrooms remodelled during the first term break, one as a mode 2 classroom with 'cluster' table arrangements and other modifications, the other as a mode 3 classroom. The latter had installed multiple whiteboards, multiple TOWs (portable televisions on wheels), and a variety of non-traditional furniture. Architectural modifications to the actual rooms were not deemed important within the scope of this study (Fisher, personal correspondence). The third classroom was not altered; it remained in a 'traditional' mode 1 format, with individual tables and chairs arranged towards a teacher's table and a whiteboard at the front of the room.

Each class had a 'home' teacher who taught most subjects to them, with the exception of some specialist subjects (i.e. Art, Music and Physical Education). For the study the classes, accompanied by their teachers, spent one term in each classroom during terms two, three and four. The swap between each classroom was considered a separate 'intervention'. Students undertook a single ten-minute survey, the *Linking Teaching, Pedagogy and Space* survey (LTPS), a tool designed specifically for this project. This occurred in normal class time every three weeks during these three school terms. In addition, summative test results in mathematics were collated for later comparison. In this way, students and teachers provided repeated measures across time and three intervention phases, with differences in measures being attributable to the changes in classroom design.

Sampling

The school organised its approximately 170 grade seven students into six classes based on external standardised testing in mathematics. In the year of this study two classes were comprised of high ability, and the remaining four comprised of mixed ability mathematics students. From this pool the study design required three classes – C1, C2 and C3. One high and two mixed ability classes were chosen from

the six based on their form teachers' (T1, T2 and T3) agreement to participate. All students from these classes who returned informed consent forms were included in the study. The resulting sample of student ($n = 52$) represented a suitable participation rate (65%) across the three classes. This number met Diggle, Heagerty, Liang, and Zeger (2002) formula for determining effective sample size, when measuring effect of interventions across multiple time points and when calculating 95% confidence intervals (CIs).

Data Collection

The study wished to find out if students' standardised mathematics scores and responses to the LTPS survey altered as they 'rotated' between the three modes of classrooms each term. The argument was that any change in plotted data would be attributable to the type of space in which they studied for that term. Four dependent variables were used for this study, the first three of which structured the development of the LTPS, and are summarised together with independent variables in Table 1.

Table 1.

Summary of dependent and independent variables

<u>Dependent variables</u>	<u>Independent variables</u>
Influence on the use of ICT (Domain A)	A ¹ Effectiveness A ² Incidence A ³ Flexibility
Influence on teacher pedagogy (Domain B)	B ¹ Teacher ownership of goals B ² Creating a supportive environment B ³ Fostering self-regulation B ⁴ Catering to student needs B ⁵ Challenging students B ⁶ Integrating assessment B ⁷ Linking learning to wider world
Influence on student engagement (Domain C)	C ¹ Positive attitude C ² Displays curiosity, optimism C ³ Persistence and attitude C ⁴ Uses initiative C ⁵ Tackles challenges C ⁶ Works beyond Zone of Proximal Development (ZPD)

To determine independent variables, relevant educational theories currently in use in Australian schools were utilised to identify features that typified their presence in classrooms. For example, to identify if 'good teaching' had occurred (the dependent variable associated with Research Question 2) the survey created independent variables structured on the Victorian Government's well-accepted *Principles of Learning and Teaching – PoLT* (State of Victoria, 2007). To identify when a student was 'engaged' (the dependent variable associated with Research Question 3) the survey constructed questions based on current educational acceptance

that engagement involves cognitive, emotional and behavioural actions (Fredricks, Blumenfeld, & Paris, 2004). A test of causality for these variables was undertaken (Gray and Guppy, 2007) to ensure all critical factors argued within the guiding educational theories were accommodated within a logical progression in the survey. Survey questions were then developed that addressed each independent variable. The resulting survey was trialled on colleagues, refined to minimise time demands, tested on a sample of non-participating students, and uploaded to Survey Monkey.

The fourth research question was measured through summative student achievement obtained through the school's year seven mathematics program. The data for this research question were obtained through synchronous summative assessment, using in-class examinations and problem-based investigations and group-based assignments. Individual student results determined at the end of each term were utilised as they were marked and moderated against standardised marking criteria across all classes.

Data Analysis

Analysis of results for research questions one, two and three was done through the process of 'visual graphic analysis'. Visual analysis, frequently utilised in SSRDs, is a proven mechanism for observing changes in level, trend and variability within and between the baseline and intervention periods (Byiers, Reichle, & Symons, 2012). It is able to derive a functional relationship between the independent and dependent variables, which is equivalent to paired *t*-tests (Bobrovitz & Ottenbacher, 1998) and conveys the precision through which it has been estimated (Baguley, 2009, 2012; Masson & Loftus, 2003). Generally, visual analysis has centred on the analysis of a single case. However, a sufficient sample size and high-retention rate (92%), allowed the students in each class to be grouped and summed as a single subject (Ivankova, Creswell, & Stick, 2006).

This visual analysis of class means, with the application of 95% CIs, evaluated the true effect of the intervention. This was an improvement on the traditional single point analysis based on the recommendations of Baguley (2009) and Nourbakhsh and Ottenbacher (1994). The application of 95% CIs provided an implicit visual representation whether or not a 'statistically significant' difference between the means and thereby reject or accept the null hypothesis (Cumming, 2007, 2009). The criterion used to determine statistically significant differences was adapted from the literature (i.e. Baguley, 2012; Masson & Loftus, 2003) and consistent of; mean level change and trend; overlap of confidence levels; and trend and variability of confidence intervals. The work of (Cumming (2007), 2009)) around CIs was used to inform statistically significant differences through the interpretation of 'non-overlapping' (NO) ($p \leq 0.001$), just touching ($p = 0.01$) and up to overlapping of half of one CI arm ($p \leq 0.05$). Items that were intended to measure each of the 17 independent variables were subjected to Cronbach's Alpha biserial correlation item analysis, conducted *post hoc*, which allowed the analysis of results according to the research questions.

For Research Question 4, between-group comparison of summative student achievement of the three participating classes (C1, C2 and C3) was tracked against their ‘likeability’ non-participating classes (N1, N2 and N3). These classes were matched on the basis of external standardised cognitive ability testing. Student achievement in the different modal classrooms against the baseline data was compared and contrasted through; factor analysis using Cohen’s *d* effect size calculations; and single-sample *t*-tests.

Procedure

The research was conducted with little variation from the approach previously described. Students and teachers willingly enlisted, and during the term one break the classrooms were modified. Teachers and students rotated between the three classrooms at the following term two and term three breaks, resulting in each student and home teacher spending one term in each of the unmodified (mode 1), mode 2 and mode 3 classrooms. The LTPS was conducted every three weeks via Survey Monkey, and the principal researcher conducted one-hour interviews about the ‘experience’ with each staff member at the end of each intervention. As a result, the researchers collected a wealth of quantitative and qualitative information. Of these, this article will focus on the former. The survey had embedded within its 38 items data relating to 17 independent variables (see Table 1). With a high retention rate across the term of the study, the LTPS generated over 17,000 datum. Within the scope of this paper these cannot be reported in full, thus the following section clusters results around the three issues critical to this study – did the survey indicate that the mode of classroom made a difference to teacher use of ICT, to teacher and student perceptions of the quality of teaching, and to student engagement? The section finishes with a report on the separate statistical analysis of mathematics scores.

Results

Did the mode of classroom impact teachers’ use of ICT?

The short answer to this question is yes, and in two of the three classes this effect was statistically significant (Table 2). The LTPS questions on ICT use focused on effectiveness (A^1), incidence (A^2) and flexibility (A^3) of technology in the lessons being taught. When plotted and analysed visually, students perceptions of the effectiveness, incidence and flexibility of ICT use in lessons improved consistently across the term in the mode 3 space – the only mode to record this trend. Often starting at a common position in all three classroom modes, student perceptions of use of ICT became quite different by the end of the term, with observable improvements only in the informal space. Something happened in the mode 3 space within all three classes, and it was positive.

Table 2.

Summary table of visual analysis for the changes in student perceptions of the effectiveness and relevance of and flexibility in use of ICT between mode 1 (baseline) and mode 2 and 3 (intervention) spaces

Class	Effectiveness (A ¹)		Incidence (A ²)		Flexibility (A ³)	
	Mode 2	Mode 3	Mode 2	Mode 3	Mode 2	Mode 3
C1	<i>NO</i> ^a	<i>NO</i>	<i>O</i> ^b	<i>NO</i>	<i>O</i>	<i>NO</i>
C2	<i>O</i>	<i>NO</i>	<i>O</i>	<i>NO</i>	<i>O</i>	<i>NO</i>
C3	<i>O</i>	<i>O</i>	<i>NO</i>	<i>NO</i>	<i>NO</i>	<i>NO</i>

Note. ^a Non-Overlapping confidence intervals. ^b Overlapping confidence intervals.

Figure 1 below provides one visual plot (in this case, ‘effectiveness’) as an example of the trend seen also in ‘relevance’ and flexibility’. The 95% CIs are represented by the solid vertical ‘whiskers’, and when overlapping up to half of one CI arm indicate a significant difference ($p \leq 0.05$) (Cumming, 2007, 2009).

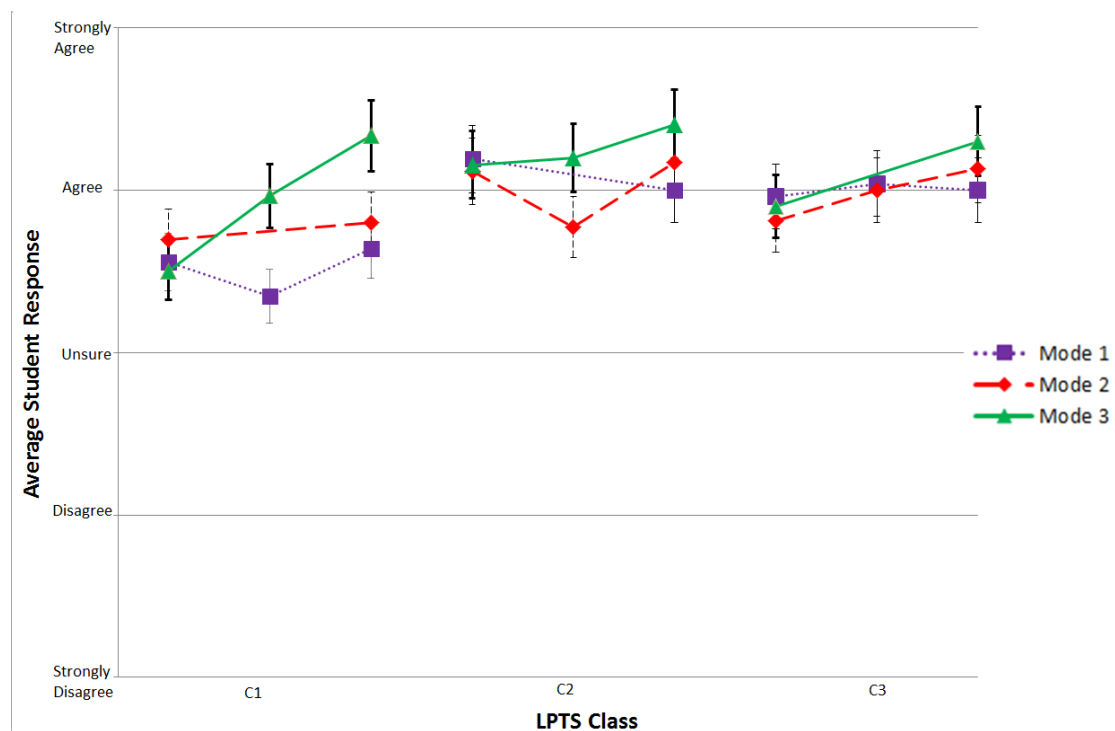


Figure 1. Effectiveness of 1:1 technology C1, C2 and C3 class average, with 95% CIs, for each classroom mode.

Did the mode of classroom have an effect on the perceptions of quality teaching?

This section of the survey instrument contained a total of fourteen questions that addressed students’ perceptions about the way that the changing classroom space influenced how their teacher taught and the pedagogy employed. The reliability of the significant number of variables (7) and items for this research question was determined through Cronbach’s Alpha. The items that achieved the reliability

criteria ($0.8 \leq \alpha \leq 0.95$) outlined by Gliem and Gliem (2003) were; ‘teacher ownership (B¹)’, ‘fostering student self-regulation (B³)’, and ‘deeper levels of student understanding (B⁵)’.

One survey question addressed the B¹ variable that focused on students’ perception of their teachers’ ownership of the curriculum. There was clear statistical difference due to non-overlapping confidence intervals of the mode 3 and mode 1 spaces, for the C1 and C2 classes (Table 3). For class C1 there was also a clear statistical improvement for the mode 3 space when compared to the mode 2 space. For class C3, the average student response was higher for the mode 2 and 3 learning modes compared to the mode 1 environment at the end of each intervention, but the difference did not meet the criteria to be statistically significant. In all classes, the length of time spent in the mode 3 space had a clear effect on the students’ perception that their teachers appeared more focused on teaching well, due to a positive trend in each of the three classes.

Table 3.

Summary table of visual analysis for the changes in student perceptions of teacher ownership, fostering self-regulation and deeper levels of thinking between mode 1 (baseline) and mode 2 and 3 (intervention) spaces

Class	<u>Teacher ownership (B¹)</u>		<u>Fostering self-regulation (B³)</u>		<u>Deeper levels of thinking (B⁵)</u>	
	Mode 2	Mode 3	Mode 2	Mode 3	Mode 2	Mode 3
C1	<i>O^a</i>	<i>NO^b</i>	<i>NO</i>	<i>NO</i>	<i>O</i>	<i>NO</i>
C2	<i>O</i>	<i>NO</i>	<i>NO</i>	<i>NO</i>	<i>NO</i>	<i>NO</i>
C3	<i>O</i>	<i>O</i>	<i>NO</i>	<i>NO</i>	<i>O</i>	<i>NO</i>

Note. ^a Overlapping confidence intervals. ^b Non-Overlapping confidence intervals.

Three survey questions addressed the B³ variable that focused on a teacher’s capacity to foster student self-regulation. The questions in the LPTS instrument were focused around the elements of; ‘foster student independence’, ‘interdependence’ and ‘self-motivation’. The aim was to determine if a change in learning modality enabled teachers to make the hypothesised shift in practice from teacher-centric to student-centred pedagogy. The clear statistical difference at the end of both interventions in all classes (Table 3), indicated that both the mode 2 and 3 spaces did have an effect on this element of teacher practice. It would be inferred that more student-centric and informal spaces facilitated learning experiences that required students to exercise choice in how they solved problems, to take more responsibility of their learning and ultimately be more engaged. Interestingly, in class C2, the students indicated a higher perception of student-centred learning at the end of the mode 2 intervention compared to the mode 3.

Two survey questions addressed the B⁵ variable that was focused on challenging students towards ‘deeper levels of thinking’. These questions focused on the degree to which student learning outcomes were extended and the level of encouragement students experienced to use their initiative. The C1 and C2 classes again recorded a statistically significant increase in positive student response at the end of the mode 3 intervention compared to the mode 1 (Table 3). It was noticeable that for class C2, the sharp increase in the student response at the end of the mode 2 interventions was similar to that observed in other variables that were tested. Students from class C3, recorded a similar trend of responses in the mode 3 space, as they did for the B¹ variable. However, unlike the B¹ variable the C3 class responses in the mode 2 spaces were not only higher, but statistically significantly so, when compared to the mode 1 spaces.

Did altering the learning mode have an effect on student engagement?

For the final section of the student survey, there were a total of ten questions that addressed six independent variables (Table 1). These variables focused on students’ perceptions of the influence of the changing classroom space on their level of engagement. Due to the number of variables and the reliability determined by Cronbach’s Alpha, this paper will focus on three, which are: ‘positive student attitudes (C¹)’, ‘willingness to take on a challenge (C⁵)’, and ‘willingness to work beyond ZPD (C⁶)’.

Two survey questions sought to determine the impact of the space students’ positive attitudes (C¹) by ascertaining their levels of enjoyment of and positivity about their learning. There was clear statistical difference due to non-overlapping confidence intervals of the mode 3 and mode 1, for all three classes (Table 4). For this domain, all classes in the mode 3 space at each collection point across the three interventions recorded strongly favourable student responses with all average student response around the ‘Agree’ level. Finally, the length of time that students spent in the mode 2 and 3 spaces had a direct correlation to their level of engagement, through a constant positive trend in the perception of the students in these spaces.

Table 4.

Summary table of visual analysis for the changes in student perceptions of their attitude and willingness to take on challenges and work beyond the limit of their expertise between mode 1 (baseline) and mode 2 and 3 (intervention) spaces

Class	<u>Student attitude (C¹)</u>		<u>Take on challenge (C⁵)</u>		<u>Work beyond limit of expertise (C⁶)</u>	
	Mode 2	Mode 3	Mode 2	Mode 3	Mode 2	Mode 3
C1	<i>O^a</i>	<i>NO^b</i>	<i>NO</i>	<i>NO</i>	<i>O</i>	<i>NO</i>
C2	<i>O</i>	<i>NO</i>	<i>NO</i>	<i>NO</i>	<i>O</i>	<i>O</i>

C3 O NO NO NO O O

Note. ^a Overlapping confidence intervals. ^b Non-Overlapping confidence intervals.

Three survey questions addressed the C⁵ variable that was focused on the students' willingness to take on a challenge in each of the different classroom modes. These questions examined students' work ethic when being asked to master new knowledge, their motivation to gain good grades, and their willingness to solve problems in unconventional or innovative ways. This was the only variable in which all three classes achieved statistically significantly higher responses in the mode 2 and 3 spaces when compared to the mode 1 layout. Interestingly, for the C3 class the length of time that students spent in the mode 1 classroom space had a negative effect on the students' willingness to take on a challenge through its negative trend.

One question addressed the C⁶ variable that focused on the students' willingness to work beyond their ZPD or limit of expertise. This question examined the ability of the students to work on tasks that were difficult or made them think. Unlike the C⁵ variable, the responses to this variable were not statistically different in the three modes. Only class C1 recorded a statistically significant increase in the mode 3 intervention compared to the mode 1 (Table 4). Furthermore, unlike previous variables there was no consistent trend between the length of time in each space and student perceptions.

Is there a link between the space and student achievement in mathematics?

Analysis of results for the fourth research question was drawn from all grade 7 assignments and tests. To account for the confounding variables of individual cognitive ability and class composition, external standardised ability scores were obtained through the Academic Assessment Services (AAS) testing instrument. The average AAS testing 'mathematics reasoning' scores for each class enabled matched between-group comparison of the test (C1, C2 and C3) and non-participating classes (N1, N2 and N3). The non-participating students who had no interaction with any of the rooms being used in the survey (all used mode 1 styled rooms for the full year). Comparison of AAS means enabled the assessment between; C1 ($M = 45.57$) and N1 ($M = 45.68$); C2 ($M = 31.98$) and N2 ($M = 31.77$); C3 ($M = 31.63$) and N3 ($M = 31.11$). The AAS data was utilised in the construction of the high-ability mathematics C1 and N1 classes, with the heterogeneous C2, C3, N2 and N3.

High-ability class comparison.

The C1 class results in each of the learning modalities was compared with those of the other non-participating, control high-ability class N1 (Table 5). Both classes were composed of students of similar cognitive ability measured through AAS testing instrument. Students were assigned to each class was predicated by their Language other than English selection at the start of the year. The additional confounding variables of assessment type and instrument and curriculum were controlled, with only the variable of the classroom teacher not kept constant.

Table 5.

Summary of statistical measures comparing learning outcomes of high-ability C1 against the non-participating N1 class

Measures	<u>Mode 1</u>	<u>Mode 2</u>	<u>Mode 3</u>
<i>t</i> -test	$p = 0.016$	$p < 0.001$	$p < 0.001$
Cohen's <i>d</i>	+1.42	+1.98	+1.53
effect size	(very large)	(very large)	(very large)

The statistical analysis indicates that throughout the study, there was a clear difference in student achievement between these two classes. Even though these classes were comprised of students of similar cognitive ability, the C1 class consistently outperformed their peers. The difference between the means for the C1 and N1 classes were statistically significant ($p < 0.05$) in each of the three modes, which was supported by 'very large' effect sizes. This clear and consistent outperformance by C1 compared to N1 suggests that the difference in teacher, and therefore approach, relationships and pedagogical approach, was an influencing factor. However, there was slightly stronger outperformance in the mode 2 and 3 classroom layouts. This could suggest that in these spaces, and based on the student survey responses, that the teacher was able to facilitate slightly different uses of digital technology and pedagogical practices and/or student groupings, which could account for this trend.

Mixed-ability class comparison.

The C2 and C3 class results in each of the learning modalities was compared to those of the other non-participating, mixed-ability N2 and N3 classes (Table 6 and Table 7 respectively). These more mixed-ability classes were comprised a wider spectrum of student cognitive abilities. However, they were taught the same

curriculum and completed the same assessment instruments as the high-ability classes (C1 and N1).

Table 6

Summary of statistical measures comparing learning outcomes of mixed-ability C2 against the non-participating N2 class

Measures	<u>Mode 1</u>	<u>Mode 2</u>	<u>Mode 3</u>
<i>t</i> -test	$p = 0.001$	$p = 0.002$	$p < 0.001$
Cohen's <i>d</i>	+0.78	+0.76	+1.30
effect size	(medium)	(medium)	(very large)

As with the high-ability class C1, the mixed-ability C2 class clearly and consistently outperformed their likeability peers in class N2 throughout the study. These classes were of similar cognitive ability. The classes were comprised of students of similar cognitive ability using the AAS external data. The difference between the means for the C2 and N2 classes were statistically significant ($p < 0.05$) in each of the three modes, with the similar results in the mode 1 and 2 space. The largest effect size ($d = 1.30$) was achieved in the mode 3 classroom layout. However, like the earlier comparison, the outperformance by the C2 class in all modes reinforces the significant effect of the teacher.

Table 7

Summary of statistical measures comparing learning outcomes of mixed-ability C3 against the non-participating N3 class

Measures	<u>Mode 1</u>	<u>Mode 2</u>	<u>Mode 3</u>
<i>t</i> -test	$p = 0.171$	$p = 0.067$	$p = 0.718$
Cohen's <i>d</i>	-0.32	-0.46	-0.08
effect size	(negative)	(negative)	(negative)

In contrast to C1 and C2, class C3 achieved results that were lower than their like-ability peers in the N3 class. This underperformance was fairly consistent throughout the study and mirrored this class's responses to the LPTS survey. The closest result between the C3 and N3 class was achieved in the mode 3 space. This result differed the mode 1 and 2 results and could be attributed to the statistically

significant difference in the C3 class's response to the questions that focused on 'student attitude' (C¹).

In summary, the comparison of the mathematics assessment data of classes C1, C2 and C3 against their like-ability peers, on the same instrument, assessing the same curriculum, suggest that the arrangement of space does have an effect on student learning outcomes. Of significant interest is the performance of C2 and C3, and to a lesser degree C1, in the mode 3 space.. This correlation across these classes and their teachers suggests that the informal and adaptive mode 3 space, aligned with the affordance of digital and visual technologies, had an effect on both teaching and learning. The space appeared to influence the teachers' pedagogical approach, which had an effect on student learning experiences and therefore student attitude.

Conclusion

This novel study found sound quantitative evidence to contribute to the growing argument that the arrangement of the physical learning space does matter. It was found that a more dynamic and adaptive space, aligned with the affordances of technology, had a positive, and at time significant effect on student perceptions concerning their learning. This was determined through a robust design that combined the visual analysis, single-sample *t*-tests and Cohen's *d* effect size calculations of SSRD data in the determination of a statistically significant effect of the change in modalities.

From a student perspective, it was clear that technology was a valuable and relevant learning tool in each classroom setting. However, when students utilised technology in the more dynamic and flexible space, something changed in the manner in which they and their teachers utilised technology. This noticeable change was exemplified by the overwhelmingly positive student responses in relation to the importance of technology as a valuable learning tool whilst they were in the mode 3 space.

The noticeable and positive change that was associated with the mode 3 space continued into the more teacher- and student-centric domains. For the C1 and C2 classes, and to lesser extent the C3 class, the mode 3 space appeared to have a significant and positive effect on a teacher's pedagogical approach and therefore their

students' level of engagement. It could be argued that this 'altered approach', employed by the teachers of classes C1 and C2 in the mode 3 space, was a reason why they outperformed like-ability peers.

Even though the study into the effect of learning spaces on both students and teachers remains in its infancy, it appears from this study and corresponding literature that there exists a link between classroom space and changes to teaching and learning. However, the findings do not indicate causality. Improvements in areas of technology efficiency and relevance, teachers' pedagogy, and student engagement and learning outcomes in the mode 3 space (and to a lesser extent the mode 2 space) are noteworthy. However, they remain largely conjecture until further studies can better isolate the impact of specific pedagogies – a significant challenge. Despite this, these findings make a significant contribution to this discussion through its focus on both students and teachers in a middle school setting, and its attempt to regulate external variables through its SSRD.

Acknowledgements

This research was conducted with the assistance of a University of Melbourne, Melbourne Graduate School of Education Research Seed grant. The authors would like to express their appreciation for the professional support provided by the staff of Anglican Church Grammar School, Brisbane.

References

- Abbassi, N., & Fisher, K. (2010). *LEARN Working Paper 01/Version01: A research review of the impacts of learning environments*. Learning Environments Applied Research Network, University of Melbourne.
- Alterator, S., & Deed, C. (2013). Teacher adaptation to open learning spaces. *Issues in Educational Research*, 23(3), 315-330.
- Baguley, T. (2009). Standardized or simple effect size: What should be reported? *British Journal of Psychology*, 100, 603-617. doi: 10.1348/000712608X377117
- Baguley, T. (2012). Calculating and graphing within-subject confidence intervals for ANOVA. *Behavior research methods*, 44(1), 158-175.
- Blackmore, J., Bateman, D., O'Mara, J., & Loughlin, J. (2011). *Research into the connection between built learning spaces and student outcomes: Literature review*. Melbourne: Victorian Department of Education and Early Childhood Development Retrieved from http://www.eduweb.vic.gov.au/edulibrary/public/publ/research/publ/blackmore_learning_spaces.pdf.

- Bobrovitz, C. D., & Ottenbacher, K. J. (1998). Comparison of visual inspection and statistical analysis of single-subject data in rehabilitation research. *American Journal of Physical Medicine and Rehabilitation*, 77(2), 94-102.
- Brooks, D. C. (2011). Space matters: The impact of formal learning environments on student learning. *British Journal of Educational Technology*, 42(5), 719-726.
- Byiers, B. J., Reichle, J., & Symons, F. J. (2012). Single-subject experimental design for evidence-based practice. *American Journal of Speech-Language Pathology*, 21(4), 397-414. doi: 10.1044/1058-0360(2012/11-0036)
- Cakiroglu, O. (2012). Single subject research: Applications to special education. *British Journal of Special Education*, 39(1), 21-29.
- Cleveland, B., & Fisher, K. (2014). The evaluation of physical learning environments: a critical review of the literature. *Learning Environments Research*, 17, 1-28. doi: 10.1007/s10984-013-9149-3
- Cumming, G. (2007). Inference by eye: Pictures of confidence intervals and thinking about levels of confidence. *Teaching Statistics*(3), 89. doi: 10.1111/j.1467-9639.2007.00267.
- Cumming, G. (2009). Inference by eye: Reading the overlap of independent confidence intervals. *Statistics in medicine*, 28(2), 205-p220.
- Diggle, P., Heagerty, P., Liang, K., Y, & Zeger, S. (2002). *Analysis of longitudinal data* (2nd ed.). Oxford: Oxford University Press.
- Fisher, K. (2003). *Linking pedagogy and space*. Melbourne: Department of Education and Early Childhood Development.
- Fisher, K. (2006). *The new learning environment: Hybrid designs for hybrid learning Education futures public #2*. Melbourne: Woods Bagot.
- Fredricks, J. A., Blumenfeld, P. C., & Paris, A. H. (2004). School engagement: Potential of the concept, state of the evidence. *Review of Educational Research*, 74(1), 59-109.
- Gliem, J. A., & Gliem, R. R. (2003). *Calculating, interpreting, and reporting cronbach's alpha reliability coefficient for likert-type scales*. Paper presented at the Midwest Research-to-Practice Conference in Adult, Continuing, and Community Education, The Ohio State University, Columbus.
- Hattie, J. (2009). *Visible learning: A synthesis of over 800 meta-analyses relating to achievement*. New York: Routledge.
- Horner, R. H., Carr, E. G., Halle, J., McGee, G., Odom, S., & Wolery, M. (2005). The use of single-subject research to identify evidence-based practice in special education. *Exceptional Children*, 71(2), 165-179.
- Horner, R. H., Swaminathan, H. S., & George, S. K. (2012). Considerations for the systematic analysis and use of single-case research. *Education & Treatment of Children*, 35(2), 269.
- Ivankova, N. V., Creswell, J. W., & Stick, S. L. (2006). Using mixed-methods sequential explanatory design: From theory to practice. *Field Methods*, 18(1), 3-20.
- Lackney, J. A. (2008). Teacher environmental competence in elementary school environments. *Children, Youth and Environments*, 18(2), 133-159.
- Lippman, P. C. (2013). Designing collaborative spaces for schools: Part 1. *The Journal*, January. <http://thejournal.com/articles/2013/02/13/designing-collaborative-spaces-for-schools.aspx>

- Masson, M. E., & Loftus, G. R. (2003). Using confidence intervals for graphically based data interpretation. *Canadian Journal of Experimental Psychology*, 57(3), 203.
- Monahan, T. (2002). Flexible space & built pedagogy: Emerging IT embodiments. *Inventio*, 4(1), 1-19.
- Nourbakhsh, M. R., & Ottenbacher, K. J. (1994). The statistical analysis of single-subject data: a comparative examination. *Physical therapy*, 74(8), 768-776.
- Painter, S., Fournier, J., Grape, C., Grummon, P., Morelli, J., Whitmer, S., & Cevetello, J. (2013). Research on learning space design: Present state, future directions *The Perry Chapman Prize: Society for College and University Planning*.
- Rindskopf, D. (2014). Nonlinear bayesian analysis for single case designs. *Journal of school psychology*, 52(2), 179-189. doi: <http://dx.doi.org/10.1016/j.jsp.2013.12.003>
- Soja, E. (1996). *Thirdspace: Expanding the geographical imagination*. Cambridge: Blackwell.
- State of Victoria. (2007). The principles of learning and teaching. Retrieved June, 2014, from <http://www.education.vic.gov.au/school/teachers/support/pages/principles12.aspx>
- Walker, J. D., Brooks, D. C., & Baepler, P. (2011). Pedagogy and space: Empirical research on new learning environments. *EDUCAUSE Quarterly*, 34(4). <http://www.educause.edu/ero/article/pedagogy-and-space-empirical-research-new-learning-environments>



Minerva Access is the Institutional Repository of The University of Melbourne

Author/s:

Imms, W; Byers, T

Title:

Impact of classroom design on teacher pedagogy and student engagement and performance in mathematics

Date:

2017

Citation:

Imms, W; Byers, T, Impact of classroom design on teacher pedagogy and student engagement and performance in mathematics, Learning Environments Research, 2017, 20 (1), pp. 139 - 152

Persistent Link:

<http://hdl.handle.net/11343/191366>

File Description:

Submitted version