

Keywords: ovarian cancer; obesity; overall survival; progression-free survival; ovarian cancer-specific survival

Obesity and survival among women with ovarian cancer: results from the Ovarian Cancer Association Consortium

C M Nagle^{*1}, S C Dixon^{1,2}, A Jensen³, S K Kjaer^{3,4}, F Modugno^{5,6,7}, A deFazio^{8,9}, S Fereday¹⁰, J Hung^{8,9}, S E Johnatty¹¹, Australian Ovarian Cancer Study Group^{1,10}, P A Fasching^{12,13}, M W Beckmann¹³, D Lambrechts^{14,15}, I Vergote¹⁶, E Van Nieuwenhuysen¹⁶, S Lambrechts¹⁶, H A Risch¹⁷, M A Rossing¹⁸, J A Doherty¹⁹, K G Wicklund¹⁸, J Chang-Claude²⁰, M T Goodman²¹, R B Ness²², K Moysich²³, F Heitz^{24,25}, A du Bois^{24,25}, P Harter^{24,25}, I Schwaab²⁶, K Matsuo²⁷, S Hosono²⁸, E L Goode²⁹, R A Vierkant²⁹, M C Larson²⁹, B L Fridley³⁰, C Høgdall⁴, J M Schildkraut³¹, R P Weber³¹, D W Cramer³², K L Terry³², E V Bandera³³, L Paddock³⁴, L Rodriguez-Rodriguez³³, N Wentzensen³⁵, H P Yang³⁵, L A Brinton³⁵, J Lissowska³⁶, E Høgdall^{3,37}, L Lundvall⁴, A Whittemore³⁸, V McGuire³⁸, W Sieh³⁸, J Rothstein³⁸, R Sutphen³⁹, H Anton-Culver⁴⁰, A Zogas⁴⁰, C L Pearce⁴¹, A H Wu⁴¹ and P M Webb^{1,2} for the Ovarian Cancer Association Consortium

¹Population Health Department, QIMR Berghofer Medical Research Institute, Brisbane, QLD, Australia; ²School of Population Health, University of Queensland, Brisbane, QLD, Australia; ³Virus, Lifestyle and Genes, Danish Cancer Society Research Center, Copenhagen, Denmark; ⁴Department of Gynecology, Rigshospitalet, University of Copenhagen, Copenhagen, Denmark; ⁵Department of Obstetrics, Gynecology and Reproductive Sciences, University of Pittsburgh School of Medicine, Pennsylvania, PA, USA; ⁶Department of Epidemiology, University of Pittsburgh Graduate School of Public Health, Pennsylvania, PA, USA; ⁷Womens Cancer Research Program, Magee-Womens Research Institute and University of Pittsburgh Cancer Institute, Pennsylvania, PA, USA; ⁸Department of Gynaecological Oncology, Westmead Hospital, Westmead, NSW, Australia; ⁹Center for Cancer Research, University of Sydney at the Westmead Millennium Institute, Westmead, NSW, Australia; ¹⁰Peter MacCallum Cancer Centre, East Melbourne, VIC, Australia; ¹¹Genetics and Computational Biology Department, QIMR Berghofer Medical Research Institute, Brisbane, QLD, Australia; ¹²David Geffen School of Medicine, Department of Medicine Division of Hematology and Oncology, University of California at Los Angeles, Los Angeles, CA, USA; ¹³Department of Gynecology and Obstetrics, University Hospital Erlangen, Friedrich-Alexander-Universität Erlangen-Nürnberg, Comprehensive Cancer Center Erlangen-EMN, Erlangen, Germany; ¹⁴Vesalius Research Center, VIB, Leuven, Belgium; ¹⁵Department of Oncology, University of Leuven, Leuven, Belgium; ¹⁶Department of Obstetrics and Gynecology, Leuven Cancer Institute, University Hospitals Leuven, Leuven, Belgium; ¹⁷Department of Chronic Disease Epidemiology, Yale School of Public Health, New Haven, CT, USA; ¹⁸Program in Epidemiology, Fred Hutchinson Cancer Research Center, Seattle, WA, USA; ¹⁹Department of Community and Family Medicine, The Geisel School of Medicine at Dartmouth, Lebanon, NH, USA; ²⁰Division of Cancer Epidemiology, German Cancer Research Center, Heidelberg, Germany; ²¹Samuel Oschin Comprehensive Cancer Institute, Cedars-Sinai Medical Center, Los Angeles, CA, USA; ²²School of Public Health, University of Texas, Houston, TX, USA; ²³Department of Cancer Prevention and Control, Roswell Park Cancer Institute, Buffalo, NY, USA; ²⁴Department of Gynecology and Gynecologic Oncology, Kliniken Essen-Mitte/Evang. Huyssens-Stiftung/Knappschaft GmbH, Essen, Germany; ²⁵Department of Gynecology and Gynecologic Oncology, Dr Horst Schmidt Kliniken Wiesbaden, Wiesbaden, Germany; ²⁶Institut für Humangenetik Wiesbaden, Wiesbaden, Germany; ²⁷Department of Preventive Medicine, Faculty of Medical Sciences, Kyushu University, Nagoya, Aichi, Japan; ²⁸Division of Epidemiology and

*Correspondence: Dr C Nagle; E-mail: christina.nagle@qimrberghofer.edu.au

Received 10 February 2015; revised 1 June 2015; accepted 10 June 2015; published online 7 July 2015

© 2015 Cancer Research UK. All rights reserved 0007–0920/15

Prevention, Aichi Cancer Center Research Institute, Nagoya, Aichi, Japan; ²⁹Division of Epidemiology, Department of Health Sciences Research, Mayo Clinic, Rochester, MN, USA; ³⁰Department of Biostatistics, University of Kansas, Kansas City, KS, USA; ³¹Department of Community and Family Medicine, Duke University Medical Center, Durham, NC, USA; ³²Obstetrics and Gynecology Epidemiology Center, Brigham and Women's Hospital, Boston, MA, USA; ³³Rutgers Cancer Institute of New Jersey, Robert Wood Johnson Medical School, New Brunswick, NJ, USA; ³⁴New Jersey State Cancer Registry, Trenton, NJ, USA; ³⁵Division of Cancer Epidemiology and Genetics, National Cancer Institute, National Institutes of Health, Bethesda, MD, USA; ³⁶Department of Cancer Epidemiology and Prevention, M. Skłodowska-Curie Cancer Center, Warsaw, Poland; ³⁷Molecular Unit, Department of Pathology, Herlev Hospital, University of Copenhagen, Copenhagen, Denmark; ³⁸Department of Health Research and Policy-Epidemiology, Stanford University School of Medicine, Stanford, CA, USA; ³⁹Epidemiology Center, College of Medicine, University of South Florida, Tampa, FL, USA; ⁴⁰Department of Epidemiology, School of Medicine, University of California Irvine, Irvine, California, USA; ⁴¹Keck School of Medicine, University of Southern California Norris Comprehensive Cancer Center, Los Angeles, CA, USA

Background: Observational studies have reported a modest association between obesity and risk of ovarian cancer; however, whether it is also associated with survival and whether this association varies for the different histologic subtypes are not clear. We undertook an international collaborative analysis to assess the association between body mass index (BMI), assessed shortly before diagnosis, progression-free survival (PFS), ovarian cancer-specific survival and overall survival (OS) among women with invasive ovarian cancer.

Methods: We used original data from 21 studies, which included 12 390 women with ovarian carcinoma. We combined study-specific adjusted hazard ratios (HRs) using random-effects models to estimate pooled HRs (pHR). We further explored associations by histologic subtype.

Results: Overall, 6715 (54%) deaths occurred during follow-up. A significant OS disadvantage was observed for women who were obese (BMI: 30–34.9, pHR: 1.10 (95% confidence intervals (CIs): 0.99–1.23); BMI: ≥ 35 , pHR: 1.12 (95% CI: 1.01–1.25)). Results were similar for PFS and ovarian cancer-specific survival. In analyses stratified by histologic subtype, associations were strongest for women with low-grade serous (pHR: 1.12 per 5 kg m^{-2}) and endometrioid subtypes (pHR: 1.08 per 5 kg m^{-2}), and more modest for the high-grade serous (pHR: 1.04 per 5 kg m^{-2}) subtype, but only the association with high-grade serous cancers was significant.

Conclusions: Higher BMI is associated with adverse survival among the majority of women with ovarian cancer.

Ovarian cancer survival is poor, with only ~30–50% of women alive 5 years after diagnosis and over 140 000 deaths globally per year (Jemal *et al*, 2011). The key prognostic factors – age, stage and grade of tumour – are not modifiable at diagnosis. Understanding how potentially modifiable factors such as obesity influence survival following a diagnosis of ovarian cancer could potentially be harnessed as a means of reducing a woman's risk of cancer progression or recurrence.

Women who are overweight or obese have increased risks of developing many types of cancer, including ovarian, when compared with women of normal weight (Reeves *et al*, 2007). Two large pooled analyses recently confirmed that this increased risk for ovarian cancer is modest (odds ratios ~10% increase in risk per 5 kg m^{-2} increase in body mass index (BMI) (Collaborative Group on Epidemiological Studies of Ovarian Cancer, 2012; Olsen *et al*, 2013) and may be restricted to non-high-grade serous subtypes (Olsen *et al*, 2013). Evidence that obesity is a poor prognostic factor for several malignancies including the breast, prostate and colon is increasing (Calle *et al*, 2003; Parekh *et al*, 2012) and several lines of evidence suggest that obesity may also be associated with poor survival among women with ovarian cancer (Ptak *et al*, 2013; Diaz *et al*, 2013; Makowski *et al*, 2014). A recent meta-analysis of 14 studies concluded that women with ovarian cancer, who were obese, had 17% worse survival compared with those of normal weight (Protani *et al*, 2012). However, the studies in this meta-analysis varied greatly in the timing of obesity measurement: from usual adult weight to weight at the time of diagnosis, or at the commencement of chemotherapy. Most of the studies included had a relatively small

sample size (median = 301) and, as a consequence, variation by histologic subtype could not be investigated. Furthermore, few studies had examined progression-free survival (PFS) or ovarian cancer-specific survival.

Using data from 21 case-control studies from the Ovarian Cancer Association Consortium (OCAC), we sought to evaluate the association between BMI and survival (PFS, ovarian cancer-specific and overall survival (OS)), overall and by histologic subtype, in over 12 000 women with invasive epithelial ovarian cancer.

MATERIALS AND METHODS

The OCAC consortium was founded in 2005 to combine data from individual case-control studies, to provide increased accuracy of estimates of genetic associations with ovarian cancer (Ramus *et al*, 2008). Twenty-one studies summarized in Table 1 provided BMI data and clinical follow-up information, allowing calculation of 5-year survival estimates for invasive ovarian, fallopian tube or peritoneal cancer cases (full study name and acronym are listed in Supplementary Table 1). All of the studies were approved by their institutional review board and all study participants provided informed consent.

Analysis variables. In all but two studies (HSK and PVD), both height and weight were self-reported. For 10 studies, women recalled their weight ~1 year before diagnosis (AUS (Merritt *et al*, 2008), BEL (Song *et al*, 2009), HOP (Lo-Ciganic *et al*, 2012), JPN

Table 1. Characteristics of 21 OCAC studies included in analysis

Site	Country	Source of cases	Diagnosis years	Age range	Number of cases	Reference period for BMI measurement (before diagnosis)	Median (range) BMI (kg m^{-2})	Median (range) follow-up time among living (years)	Number (%) dead	5-Year survival (%)
AUS (Merritt <i>et al</i> , 2008)	Australia	Population	2002–2006	20–80	1404	1 Year	26.1 (46.7)	7.3 (8.0)	875 (62.3)	48.5
BAV (Song <i>et al</i> , 2009)	Germany	Hospital/Clinic	2002–2006	22–84	431	5 Years	25.9 (34.2)	5.6 (25.1)	236 (54.8)	47.4
BEL (Song <i>et al</i> , 2009)	Belgium	Hospital/Clinic	2007–2012	18–85	477	1 Year	24.7 (34.5)	3.5 (28.8)	133 (27.9)	70.0
CON (Risch <i>et al</i> , 2006)	USA	Population	1998–2003	36–81	388	5 Years	24.6 (43.6)	8.3 (10.1)	224 (57.7)	57.6
DOV (Rossing <i>et al</i> , 2007; Bodelon <i>et al</i> , 2012)	USA	Population	2002–2005	35–74	1146	5 Years	25.1 (44.8)	4.4 (8.8)	486 (42.4)	55.0
GER (Royer <i>et al</i> , 2001)	Germany	Population	1993–1996	21–75	240	At diagnosis	24.4 (40.6)	14.5 (3.9)	167 (69.6)	47.1
HAW (Goodman <i>et al</i> , 2008; Lurie <i>et al</i> , 2008)	USA	Population	1993–2008	24–85	429	5 Years	25.1 (36.9)	7.3 (16.5)	217 (50.6)	62.2
HOP (Lo-Ciganic <i>et al</i> , 2012)	USA	Population	2003–2009	25–85	652	1 Year	27.4 (51.1)	5.1 (9.1)	335 (51.4)	51.3
HSK (du Bois <i>et al</i> , 2003; Harter <i>et al</i> , 2011)	Germany	Hospital/clinic	2000–2007	29–80	111	At diagnosis	24.2 (21.3)	5.0 (10.7)	65 (58.6)	48.2
JPN (Hamajima <i>et al</i> , 2001)	Japan	Hospital/clinic	2001–2005	23–75	65	1 Year	22.4 (12.5)	3.6 (9.2)	29 (44.6)	44.1
MAC + MAY (Kelemen <i>et al</i> , 2008; Goode <i>et al</i> , 2010, 2011)	USA	Hospital/clinic	1999–2012	21–85	944	1 Year	26.6 (41.3)	3.3 (22.0)	503 (53.3)	44.0
MAL (Glud <i>et al</i> , 2004; Soegaard <i>et al</i> , 2007)	Denmark	Population	1994–1999	32–80	573	5 Years	23.6 (42.2)	13.8 (4.5)	438 (76.4)	43.5
NCO (Schildkraut <i>et al</i> , 2008, 2010)	USA	Population	1999–2008	22–74	916	1 Year	26.6 (47.4)	7.2 (8.6)	551 (60.2)	50.2
NEC (Terry <i>et al</i> , 2005; Merritt <i>et al</i> , 2013)	USA	Population	1992–2003	21–77	847	1 Year	24.6 (50.3)	13.3 (10.6)	490 (57.9)	58.7
NJO (Bandera <i>et al</i> , 2011; Chandran <i>et al</i> , 2011; Gifkins <i>et al</i> , 2012)	USA	Population	2002–2008	25–81	240	1 Year	25.8 (51.4)	6.2 (7.4)	113 (47.1)	61.0
POL (Garcia-Closas <i>et al</i> , 2007)	Poland	Population	2000–2003	24–74	268	5 Years	23.9 (21.9)	5.3 (7.1)	142 (53.0)	49.0
PVD (Hogdall <i>et al</i> , 2010; Risum <i>et al</i> , 2011)	Denmark	Hospital/clinic	2004–2012	30–84	191	At diagnosis	24.2 (32.1)	4.8 (4.9)	102 (53.4)	46.6
STA (McGuire <i>et al</i> , 2004)	USA	Population	1997–2001	21–64	499	At diagnosis	24.4 (44.7)	11.0 (13.3)	284 (56.9)	54.6
TBO (Pal <i>et al</i> , 2005, 2007; Lacour <i>et al</i> , 2011)	USA	Population	2000–2012	26–85	245	At diagnosis	24.8 (32.9)	5.9 (7.9)	131 (53.5)	49.9
UCI (Ziogas <i>et al</i> , 2000)	USA	Population	1993–2005	21–84	394	1 Year	24.1 (41.2)	8.7 (17.6)	179 (45.4)	73.5
USC (Pike <i>et al</i> , 2004; Wu <i>et al</i> , 2009)	USA	Population	1992–2009	20–84	1930	1 Year	24.6 (42.4)	8.0 (17.7)	1015 (52.6)	57.4
TOTAL				18–85	12 390		25.1 (54.6)	6.9 (28.8)	6715 (54.2)	53.6

(Hamajima *et al*, 2001), MAC (Goode *et al*, 2011) and MAY (Kelemen *et al*, 2008; Goode *et al*, 2010), NCO (Schildkraut *et al*, 2008, 2010), NEC (Terry *et al*, 2005; Merritt *et al*, 2013), NJO (Bandera *et al*, 2011; Chandran *et al*, 2011; Gifkins *et al*, 2012), UCI (Ziogas *et al*, 2000) and USC (Pike *et al*, 2004; Wu *et al*, 2009)); for six studies, they were asked to recall their weight ~5 years before diagnosis (BAV (Song *et al*, 2009), CON (Risch *et al*, 2006), DOV (Rossing *et al*, 2007; Bodelon *et al*, 2012), HAW (Goodman *et al*, 2008; Lurie *et al*, 2008), MAL (Glud *et al*, 2004; Soegaard *et al*, 2007) and POL (Garcia-Closas *et al*, 2007)); for three studies, it was recalled weight around the time of diagnosis (GER (Royer *et al*, 2001), STA (McGuire *et al*, 2004) and TBO (Lacour *et al*, 2011; Pal *et al*, 2005, 2007)); and for two studies, it was reported in the medical records around the time of diagnosis (PVD (Hogdall *et al*, 2010; Risum *et al*, 2011) and HSK (du Bois *et al*, 2003; Harter *et al*, 2011)). This information was used to calculate BMI as weight in kilograms divided by the square of height in metres (kg m^{-2}), which was classified using the

World Health Organization (WHO) definitions of obesity (<18.5 'underweight'; 18.5–24.9 'normal weight'; 25–29.9 'overweight'; 30–34.9 'class I obesity'; 35–39.9 'class II obesity'; and ≥ 40 'class III obesity') (World Health Organisation, 1995). Among the 21 OCAC studies, 756 (5.3%) women were with missing BMI information. Of the 12 390 women included in the analyses, BMI ranged from 13.7 to 68.3 kg m^{-2} . Three hundred and seven women were underweight (BMI <18.5) and 71 (0.6%) had BMI values >50 kg m^{-2} .

Covariate information. Each OCAC study submitted their data to Duke University using a standard format. Here the variables were reviewed, discrepancies were checked with individual studies and data merged where necessary. The data included information about variables potentially associated with BMI and/or survival: age (at diagnosis), tumour stage summarized from International Federation of Gynecology and Obstetrics or the Surveillance, Epidemiology, and End Results (SEER) stage (localized, regional,

distant and unknown) and tumour grade (well, moderately, poorly undifferentiated and unknown). Residual disease remaining after primary cytoreductive surgery (no macroscopic disease, macroscopic disease ≤ 2 cm, macroscopic disease, macroscopic disease, size unknown and tumour not resected) was reported in 9 of the studies and cigarette smoking status (never, current and former smoker) was reported in 17 studies.

Clinical data, definitions and analysis. Vital status and survival time were determined by each study and OS time was calculated from date of diagnosis to date of death, or last follow-up. Cause of death information was available for 1511 of the 6715 women who had died (23%) and, of these, most (94%) had died from ovarian cancer; thus, all-cause mortality was used as the primary outcome. Where time from diagnosis to study recruitment was provided (19 of the 21 studies, not available for HSK and PVD), the left truncation was used to account for time elapsed between date of diagnosis and date of study recruitment, in order to reduce potential survivorship biases arising from the exclusion of eligible women who had died before recruitment. Additional analyses were conducted using death from ovarian cancer as the end point and PFS (defined by each study as time from date of diagnosis to the first confirmed sign of disease progression (clinical, biochemical (i.e., CA125) or radiological progression), death or last follow-up date) where such data were available.

Statistical analysis. We used a two-stage method of analysis. In the first stage, each study was analysed separately. For each study, we used Cox proportional hazards regression models to compute adjusted hazard ratios (HRs) and 95% confidence intervals (CIs) for the association between BMI (standard WHO categories and per 5 kg m^{-2} increase) and survival. The HR for ovarian cancer per 5 kg m^{-2} increase in BMI was estimated by fitting a log linear trend across intervals of BMI (2.5 units) using the overall median value for each interval, except for the top interval where we used site-specific median values rounded to the nearest integer, to account for the greater variability of BMI in the upper category across study sites. We repeated this analysis using the continuous value of BMI for each woman. We expected that the relationship between BMI and survival might not be linear at very low BMI levels; hence, we excluded women in the 'underweight' range (BMI $< 18.5 \text{ kg m}^{-2}$) from these analyses. All study-specific models were adjusted for age (continuous), tumour stage (classified as localized, regional and distant) and tumour grade (well differentiated, moderately differentiated and poorly/undifferentiated). We also adjusted study-specific models for race/ethnicity (non-Hispanic White, Hispanic White, Black, Asian and others) where more than 5% of the study population was not classified as the predominant race. Data on residual disease and cigarette smoking status were not available for all studies; however, we did include these variables in models restricted to studies where they were available. For each study-specific model, we examined possible violation of the proportional hazards assumption by evaluating whether covariate associations with BMI varied over time and allowing them to vary if needed. In the second stage, the pooled BMI effect (pooled HR (pHR)) was calculated using random-effects meta-analysis according to the method of DerSimonian and Laird (1986).

We computed pHRs for BMI for all invasive ovarian cases. Where between-study heterogeneity was evident, we examined the data for potential sources of this heterogeneity considering sample size, study design, study site/region, diagnosis years and median follow-up times (calculated using the reverse Kaplan–Meier method (Clark *et al*, 2003; Schemper and Smith, 1996)), median BMI, 5-year survival per cent, race/ethnicity and timing of BMI measurement. We also conducted subgroup analyses to examine whether associations between BMI and survival were modified by histologic subtype (low- (well differentiated) and high-grade tumours (moderate/poorly/undifferentiated), serous, mucinous,

endometrioid and clear cell cancers), where these data were available. The statistical significance of any observed stratum differences was assessed by including a cross-product term in survival models. All *P*-values are two-sided. Analyses were performed using SAS 9.2 (SAS Institute, Cary, NC, USA) and Stata 11 (College Station, TX, USA).

RESULTS

Table 1 shows the characteristics of the 21 studies that contributed data from a total of 12 390 women with invasive epithelial ovarian cancer to this analysis. Twelve studies were conducted in the United States, seven in Europe and one each in Australia and Japan. The number of women with invasive epithelial ovarian cancer participating in the studies ranged from 65 (JAP) to 1930 (USC). Women were 18–85 years of age at diagnosis between 1992 and 2012 (most of the OCAC studies capped recruitment at 80 or 85 years and also excluded women younger than 18 years; thus, our cases are slightly younger than those reported in the SEER programme); 15 studies were population based and 6 were hospital/clinic based (two studies from the same population, MAC and MAY, were combined). During the follow-up period, half (54%) of the women had died. The median follow-up time among living women was 6.9 years (maximum 14.5 years). The median BMI was 25.1 kg m^{-2} (interquartile range: $22.3\text{--}29.3 \text{ kg m}^{-2}$).

The clinical characteristics of all the women included in this analysis are shown in Table 2. Women had a mean age of 58 years at diagnosis and the majority had serous (62%), poorly

Table 2. Clinical characteristics of 12 390 participants included in analysis

Characteristic ^a	N ^b	%
Age		
Age, years (median)	58.0	
< 40	741	6.0
40– < 50	2286	18.5
50– < 60	3847	31.1
60– < 70	3515	28.4
70– < 85	2001	16.2
Histology		
Serous	7530	62.4
Serous low-grade	500	4.1
Serous high-grade	6443	53.4
Mucinous	733	6.1
Endometrioid	1683	14.0
Clear cell	896	7.4
Other histology	1222	10.1
Stage		
Localized	2066	17.0
Regional	2285	18.8
Distant	7809	64.2
Grade		
Well-differentiated	1336	12.1
Moderately differentiated	2597	23.5
Poorly differentiated	6158	55.7
Undifferentiated	975	8.8
Residual disease after surgery		
No macroscopic disease	1804	46.8
Macroscopic disease ≤ 2 cm	974	25.3
Macroscopic disease > 2 cm	250	6.5
Macroscopic disease, size unknown	713	18.5
Tumour not resected	115	3.0

^aParticipants with unknown histology ($n = 326$), unknown serous high- or low-grade status ($n = 587$), stage ($n = 230$), grade ($n = 1324$) and residual disease ($n = 8534$) were not included in percentages.

^bNumbers may not add to 12 390 due to missing data.

differentiated (56%) and/or distant stage (64%) cancers. Among those with residual disease data available ($n = 3856$), 47% had no macroscopic disease after cytoreductive surgery.

In multivariate analyses (all histologies combined), we found that women who were overweight (BMI: 25–29.9), obese (BMI: 30–34.9) and morbidly obese (BMI: ≥ 35) experienced worse survival compared with women within the normal weight range (pHRs: 1.05 (95% CIs: 0.96–1.15), 1.10 (95% CIs: 0.99–1.22) and 1.15 (95% CIs: 0.98–1.37), respectively). However, in the overweight and morbidly obese groups there was significant heterogeneity between the studies (all $P < 0.05$). Using BMI as a continuous variable, risk of death increased by 3% for each 5-unit increase in BMI over 18.5 kg m^{-2} (HR: 1.03, (95% CIs: 1.00–1.07)); however, again significant heterogeneity was present between the studies (I^2 40%, $P = 0.03$) (Figure 1). Exploration of the heterogeneity showed that the largest difference in pHR was seen for study size with no apparent heterogeneity among the 18 studies, with ≥ 200 participants but significant heterogeneity among those with fewer women (Figure 2). The pHR per 5-unit increase in BMI kg m^{-2} was 1.03 (95% CIs: 1.01–1.06) for studies with ≥ 200 women vs 1.21 for studies with < 200 women (95% CIs: 0.75–1.96). We also saw significant heterogeneity in other strata, in all except one instance (diagnosis years); the group with significant heterogeneity included at least two, if not all three of the small studies. When we repeated these analyses excluding the three small studies (HSK, JPN and PVD), we found that women who were obese still experienced worse survival (pHR: 1.10 (95% CIs: 0.99–1.23)) than women within the normal weight range (Table 3). This association was similar for those who were morbidly obese (pHR 1.12 (95% CIs: 1.01–1.25)) and the pHR per 5-unit increase in BMI kg m^{-2} was 1.03 (95% CIs: 1.00–1.06); I^2 9%, $P = 0.35$) (Table 3). The evidence of heterogeneity disappeared in the obese and morbidly obese groups; however, there

remained significant heterogeneity between the studies in the overweight group (I^2 46%, $P = 0.02$). When we further excluded the study site where the confidence interval did not include the pooled estimate (MAL), there was no remaining heterogeneity in the overweight group (I^2 : 10.4%, $P = 0.3$).

Data on residual disease were not available for all studies; however, including this variable in models restricted to studies where the data were available did not result in appreciable changes to the pooled estimates (Supplementary Table 2). Similarly, data on cigarette smoking status were not available for all studies and including this variable in models did not result in appreciable changes (Supplementary Table 3).

The results stratified by histologic subtype are shown in Figure 3. This analysis included only the 12 studies with adequate numbers of cases and events to generate estimates for each histologic subtype. The strongest associations were seen for the low-grade serous and endometrioid subtypes, but neither result was significant (pHR: 1.12 (95% CIs: 0.96–1.31) and 1.08 (95% CIs: 0.95–1.23), respectively, per 5-unit increase in BMI). A more modest but significant association was observed for the high-grade serous subtype (pHR per 5-unit increase in BMI: 1.04 (95% CIs: 1.00–1.09)). No association was noted between BMI and survival among women with mucinous or clear cell tumours. Tests for heterogeneity (between the four main subtypes and for low- vs high-grade serous subtypes) did not reach statistical significance (both $P = 1.0$).

We also assessed PFS (in 11 studies, $n = 4133$ cases) and ovarian cancer-specific survival (in 9 studies, $n = 3091$) and similar results were noted to those for OS. For the 11 studies where we had both PFS and OS data, the pHR for obese women (BMI: ≥ 30) compared with women within the normal weight range was 1.10 (95% CIs: 0.99–1.23) for PFS and 1.12 (95% CIs: 1.01–1.26) for OS. In the nine studies with the cause of death data, the pHR for obese

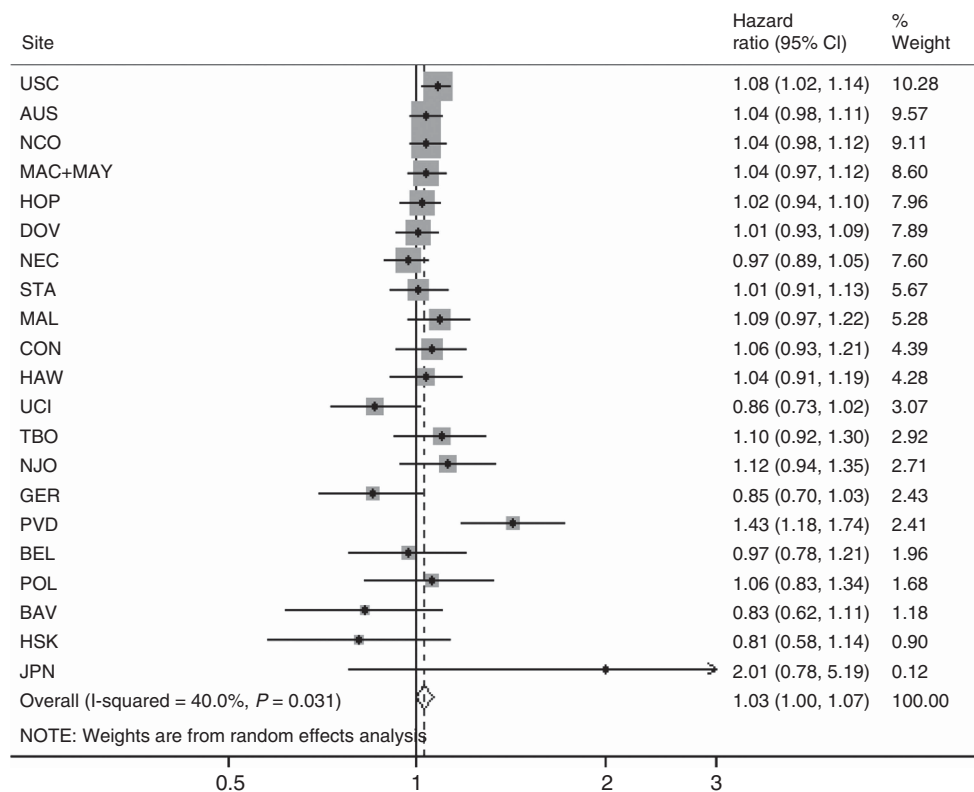


Figure 1. The association between BMI (per 5 kg m^{-2}) and OS following a diagnosis of invasive ovarian cancer, all subtypes, overall and by study site. Estimates are adjusted for age at diagnosis (continuous), stage (local/regional/distant/unknown), grade (well-/moderately-/poorly plus undifferentiated/unknown) and ethnicity (if $< 95\%$ of participants at a site shared a common ethnicity) estimates are further adjusted for the interaction of age, stage, grade and/or race with time as appropriate at each site.

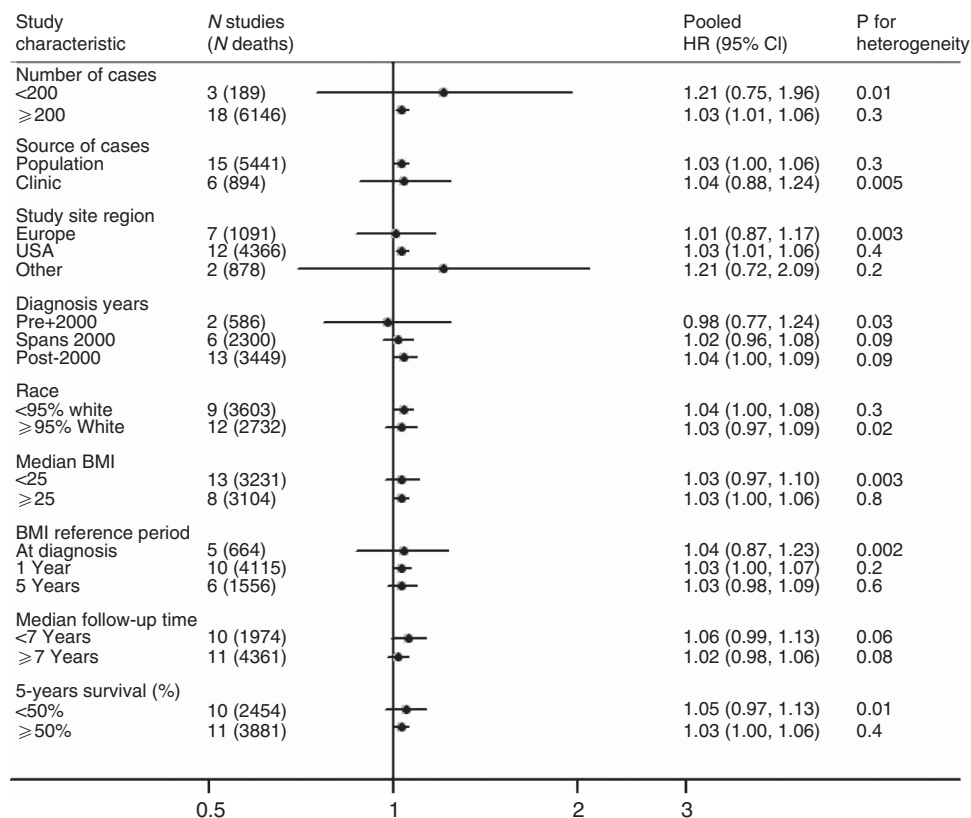


Figure 2. The association between BMI (per 5 kg m⁻²) and OS following a diagnosis of invasive ovarian cancer, all subtypes in 21 studies, stratified by study characteristics. Estimates are adjusted for age at diagnosis (continuous), stage (local/regional/distant/unknown), grade (well-/moderately-/poorly plus undifferentiated/unknown) and ethnicity (if <95% of participants at a site shared a common ethnicity) estimates are further adjusted for the interaction of age, stage, grade and/or race with time as appropriate at each site. Study site region 'Other' = AUS and JPN.

Table 3. The association between BMI and OS following a diagnosis of invasive ovarian cancer, all subtypes, two-stage pooled analysis, studies where N ≥ 200 (18 studies)

BMI (kg m ⁻²)	Study sites (n) ^a	Cases (n)	I ² (%)	pHR ^b	95% CI
<18.5	18	284	29.7	1.18	0.94–1.48
18.5–24.9 (Ref)	18	5385	–	REF	
25–29.9	18	3374	46.0	1.03 ^c	0.95–1.13
30–34.9	18	1547	34.9	1.10	0.99–1.23
≥35	17	1097	9.5	1.12	1.01–1.25
Per 5 kg m ⁻² ^d	18	11 403	9.1	1.03	1.00–1.06

Abbreviations: BMI = body mass index; CI = confidence interval; HR = hazard ratio; pHR = pooled HR; OS = overall survival.
^aExcludes study sites HSK, JPN, PVD.
^bPooled HR combined study site-specific estimates adjusting for age at diagnosis (continuous), stage (local/regional/distant/unknown), grade (well-/moderately-/poorly plus undifferentiated/unknown) and ethnicity (if <95% of participants at a site shared a common ethnicity) estimates are further adjusted for the interaction of age, stage, grade and/or race with time as appropriate at each site.
^cSignificant heterogeneity noted (P-value for heterogeneity 0.017).
^dExcludes participants with BMI <18.5 kg m⁻².

women (BMI: ≥30) compared with women within the normal weight range was 1.17 (95% CIs: 1.00–1.37) for ovarian-cancer specific survival and 1.16 (95% CIs: 1.03–1.31) for OS.

DISCUSSION

This study is, to our knowledge, the largest evaluation to date, of BMI and survival following a diagnosis of ovarian cancer. We

found that obesity was associated with a 10–12% OS disadvantage among women with ovarian cancer and results were similar for PFS and ovarian cancer-specific mortality. In subtype analyses, associations were strongest for women with low-grade serous and endometrioid cancers, and more modest for high-grade serous cancers (12%, 8% and 4% increases in mortality per 5-unit increase in BMI, respectively), but only the association with high-grade serous cancers, by far the largest subgroup, reached statistical significance. No increase in risk was noted for the less common clear-cell or mucinous subtypes, which are estimated to account for ~8% of all epithelial ovarian cancers.

Several mechanisms have been proposed to underlie the effects of obesity on ovarian cancer outcomes. Makowski *et al* (2014) recently showed that the obese state promotes tumour progression in animal models of serous ovarian cancer and concluded that metabolic consequences of obesity may be involved in the pathogenesis of ovarian cancer. Aberrant adipokine production, specifically upregulation of leptin and downregulation of adiponectin in the obese state, may explain an association between obesity and ovarian cancer outcomes. Leptin has both mitogenic and anti-apoptotic properties in cancer cell lines and is involved in promoting angiogenesis (Khandekar *et al*, 2011; Chen *et al*, 2013; Ptak *et al*, 2013). Conversely, adiponectin has anti-proliferative effects through the induction of apoptosis (Kelesidis *et al*, 2006; Barb *et al*, 2007). In a recent cohort study of 161 women with advanced-stage ovarian cancer, Diaz *et al* (2013) found that women with increased leptin to adiponectin (L:A) ratios experienced significantly shorter disease-free survival time than those with low L:A ratio. Obesity may also affect ovarian cancer survival through its effect on inflammatory cytokines, markers of insulin resistance and obesity-related hormones such as oestrogen, through the

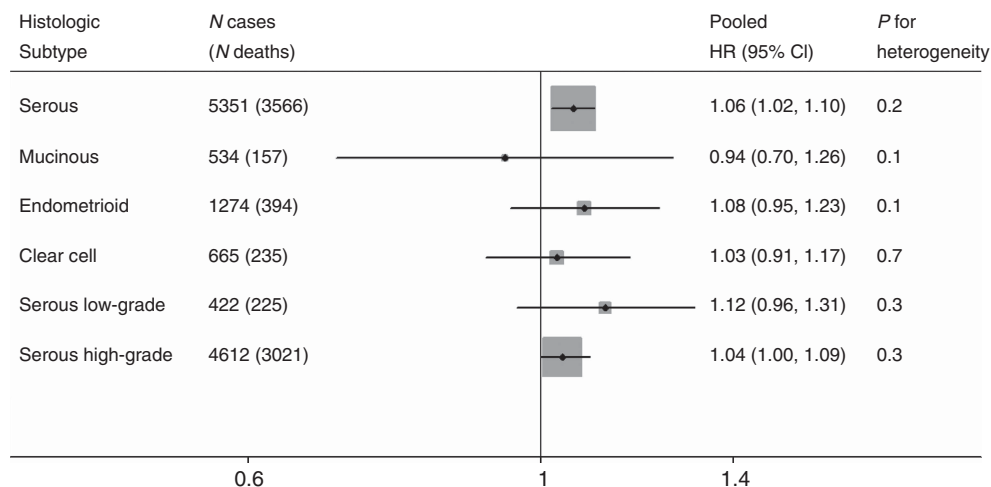


Figure 3. The association between BMI (per 5 kg m^{-2}) and OS following a diagnosis of invasive ovarian cancer, by histologic subtype, two-stage pooled analysis. Pooled HR combined study site-specific estimates adjusting for age at diagnosis (continuous), stage (local/regional/distant/unknown), grade (well-/moderately-/poorly plus undifferentiated/unknown) (except for low- and high-grade serous estimates) and ethnicity (if $< 95\%$ of participants at a site shared a common ethnicity) estimates are further adjusted for the interaction of age, stage, grade and/or race with time as appropriate at each site. Excludes participants with $\text{BMI} < 18.5 \text{ kg m}^{-2}$. Includes study sites with adequate numbers of cases and events to generate an estimate for each histologic group. Pooled HR for serous, mucinous, endometrioid and clear-cell includes study sites: AUS, BAV, CON, DOV, HAW, HOP, MAL, NCO, NEC, STA, TBO and USC. Pooled HR for serous low-grade and serous high-grade includes study sites: AUS, BAV, BEL, DOV, HOP, MAL, NCO, NEC, NJO, STA, UCI and USC.

conversion of androgens to oestrogen in adipose tissue. *In-vitro* studies have shown that oestrogens have pro-proliferative actions on ovarian cancer cells (Galtier-Dereure *et al*, 1992; Langdon *et al*, 1994; Karlan *et al*, 1995). The oestrogen receptor is expressed in up to 80% of epithelial ovarian cancers with the highest expression in serous and endometrioid tumours (Modugno *et al*, 2012; Sieh *et al*, 2013), the two subtypes in this study with the strongest associations. Finally, oestrogen may also have a role in the motility and invasion of ovarian cancer cells (Hua *et al*, 2008; Zhu *et al*, 2012).

From a treatment perspective, obese women may have worse survival because of the practice of dose capping when prescribing chemotherapy (Modesitt and van Nagell, 2005; Pavelka *et al*, 2006; Poniewierski *et al*, 2008; Au-Yeung *et al*, 2014). Dose capping involves the use of ideal rather than the actual body weight when calculating the dose to be given or dose capping at a body surface area of 2.0 m^2 (equivalent to a BMI of $\sim 30 \text{ kg m}^{-2}$) and occurs largely, it is thought, due to concerns regarding the potential for chemotherapy-related toxicities if the full dose is given (Field *et al*, 2008). Evidence from an Australian study of 330 women with late-stage ovarian cancer has shown that underdosing of carboplatin was common among the obese women (Au-Yeung *et al*, 2014). They also reported that reduced dose intensity of carboplatin was associated with worse PFS. Recently, published guidelines from the American Society of Clinical Oncology recommend that full weight-based doses of chemotherapy be used to treat obese patients with cancer, in particular where the goal of treatment is cure (Griggs *et al*, 2012).

The strengths of our study include the large sample size, which allowed us to examine associations both overall and separately for the different histologic subtypes of ovarian cancer. We included age, ethnicity, clinical factors and study site in our models, and sensitivity analysis suggested that any residual confounding by cigarette smoking would have been minimal. We also assessed PFS and ovarian cancer-specific survival, where such data were available, and the results were essentially unchanged, suggesting that obesity is not just increasing non-ovarian cancer deaths, but progression and cause-specific survival. However, most studies relied on retrospective self-reports of weight and height; hence,

there is some potential for recall error; however, it is unlikely to have differed by outcome and thus our results may underestimate the true magnitude of the association. It is possible that our measure of usual weight (before diagnosis) may be influenced by weight loss due to cachexia or weight gain due to the presence of ascites, both of which may be presenting symptoms for ovarian cancer, in particular in women with advanced disease. However, the adverse association between obesity and ovarian cancer survival appeared consistent regardless of when BMI was measured, suggesting this is not a major problem. One potential limitation of our analysis is that the data were not originally collected to look at survival and, as a result, clinical data were not always available and/or complete. However, the major advantage of using the data in this way is cost effectiveness; the time, effort and cost associated with collecting similar data from an equal number of women with ovarian cancer for a new study specifically looking at survival would be prohibitive.

In conclusion, this analysis of data from OCAC has shown that obesity before or at ovarian cancer diagnosis is associated with worse survival, when compared with women within the normal-weight range. As ovarian cancer remains a highly fatal disease and the prevalence of obesity continues to increase, studies focusing on causal mechanisms involved in adverse survival are needed.

ACKNOWLEDGEMENTS

We are grateful to the family and friends of Kathryn Sladek Smith for their generous support of Ovarian Cancer Association Consortium through their donations to the Ovarian Cancer Research Fund. The Australian Ovarian Cancer Study Management Group (D Bowtell, G Chenevix-Trench, A deFazio, D Gertig, A Green and PM Webb) and ACS Investigators (A Green, P Parsons, N Hayward, PM Webb and D Whiteman) thank all the clinical and scientific collaborators (see <http://www.aocstudy.org/>) and the women who participated in these studies for their contribution. We thank Gilian Peuteman, Thomas Van Brussel

and Dominiek Smeets for technical assistance (for BEL). The cooperation of the 32 Connecticut hospitals, including Stamford Hospital, in allowing patient access, is gratefully acknowledged. This study was approved by the State of Connecticut Department of Public Health Human Investigation Committee. Certain data used in this study were obtained from the Connecticut Tumor Registry in the Connecticut Department of Public Health. We assume full responsibility for analyses and interpretation of these data (for CON). The German Ovarian Cancer Study (GER) thank Ursula Eilber for competent technical assistance (for GER). Funding: The Ovarian Cancer Association Consortium is supported by a grant from the Ovarian Cancer Research Fund. This work was supported by the following: National Institutes of Health (R01-CA61107 (for MAL); R01-CA95023 and R01-CA126841 (for HOP); P01-CA17054 (for USC); NIH-K07 CA095666, R01-CA83918, NIH-K22-CA138563 and P30-CA072720 (for NJO); (R01-CA074850 and R01-CA080742 (for CON); R01-CA112523 and R01-CA087538 (for DOV); R01-CA058598, N01-CN-55424 and N01-PC-67001 (for HAW); R01-CA122443, P50-CA136393 and P30-CA15083 (for MAC and MAY); R01-CA076016 (for NCO); R01-CA054419 and P50-CA105009 (for NEC); U01-CA71966, R01-CA016056 and K07-CA143047 (for STA); R01-CA106414 (for TBO); R01CA058860, R01CA 092044 and PSA042205 (for UCI); Department of Defense (DAMD17-02-1-0666 (for NCO); W81XWH-10-1-02802 (for NEC); DAMD17-02-1-0669 (for HOP); DAMD17-01-1-0729 (for AUS); DAMD17-98-1-8659 (for TBO); National Cancer Institute K07-CA80668 (for HOP); NIH/National Center for Research Resources/General Clinical Research Center grant MO1-RR000056 and P50-CA159981 (for HOP); National Health and Medical Research Council of Australia, Cancer Councils of New South Wales, Victoria, Queensland, South Australia and Tasmania, Cancer Foundation of Western Australia; National Health and Medical Research Council of Australia (199600 and 400281) (for AUS); Danish Cancer Society, Copenhagen, Denmark (94 222 52) and the Mermaid I project (for MAL); FM supported by funding from K07-CA080668 (for HOP); California Cancer Research Program (00-01389V-20170, R03-CA113148, R03-CA115195, N01-CN25403 and 2II0200) (for USC); ELAN Funds of the University of Erlangen-Nuremberg (for BAV); Nationaal Kankerplan (for BEL); German Federal Ministry of Education and Research, Programme of Clinical Biomedical Research (01 GB 9401) and data management by the German Cancer Research Center (for GER); Grant-in-Aid for Scientific Research on Priority Areas from the Ministry of Education, Science, Sports, Culture and Technology of Japan, by a Grant-in-Aid for the Third Term Comprehensive 10-Year Strategy for Cancer Control from Ministry Health, Labour and Welfare of Japan, and by a grant from Takeda Science Foundation (for JPN); Mayo Foundation, Minnesota Ovarian Cancer Alliance, Fred C. and Katherine B. Andersen Foundation (for MAC and MAY); Cancer Institute of New Jersey (for NJO); Intramural Research Program of the National Cancer Institute (for POL); Cancer Prevention Institute of California (U01-CA69417) (for STA); American Cancer Society (CRTG-00-196-01-CCE), Celma Mastry Ovarian Cancer Foundation (for TBO); and Lon V Smith Foundation grant LVS-39420 (for UCI). PW is supported by a Fellowship from NHMRC and CN is supported by NHMRC Program grant 552429 (for AUS). AdF is supported by the University of Sydney Cancer Research Fund and the Cancer Institute NSW through the Sydney-West Translational Cancer Research Centre (for AUS).

CONFLICT OF INTEREST

The authors declare no conflict of interest.

REFERENCES

- Au-Yeung G, Webb PM, Defazio A, Fereday S, Bressel M, Mileskin L (2014) Impact of obesity on chemotherapy dosing for women with advanced stage serous ovarian cancer in the Australian Ovarian Cancer Study (AOCS). *Gynecol Oncol* **133**(1): 16–22.
- Bandera EV, King M, Chandran U, Paddock LE, Rodriguez-Rodriguez L, Olson SH (2011) Phytoestrogen consumption from foods and supplements and epithelial ovarian cancer risk: a population-based case control study. *BMC Womens Health* **11**: 40.
- Barb D, Williams CJ, Neuwirth AK, Mantzoros CS (2007) Adiponectin in relation to malignancies: a review of existing basic research and clinical evidence. *Am J Clin Nutr* **86**(3): s858–s866.
- Bodelon C, Cushing-Haugen KL, Wicklund KG, Doherty JA, Rossing MA (2012) Sun exposure and risk of epithelial ovarian cancer. *Cancer Causes Control* **23**(12): 1985–1994.
- Calle EE, Rodriguez C, Walker-Thurmond K, Thun MJ (2003) Overweight, obesity, and mortality from cancer in a prospectively studied cohort of U.S. adults. *N Engl J Med* **348**(17): 1625–1638.
- Chandran U, Bandera EV, Williams-King MG, Paddock LE, Rodriguez-Rodriguez L, Lu SE, Faulkner S, Pulick K, Olson SH (2011) Healthy eating index and ovarian cancer risk. *Cancer Causes Control* **22**(4): 563–571.
- Chen C, Chang YC, Lan MS, Breslin M (2013) Leptin stimulates ovarian cancer cell growth and inhibits apoptosis by increasing cyclin D1 and Mcl-1 expression via the activation of the MEK/ERK1/2 and PI3K/Akt signaling pathways. *Int J Oncol* **42**(3): 1113–1119.
- Clark TG, Bradburn MJ, Love SB, Altman DG (2003) Survival analysis part I: basic concepts and first analyses. *Br J Cancer* **89**(2): 232–238.
- Collaborative Group on Epidemiological Studies of Ovarian Cancer (2012) Ovarian cancer and body size: individual participant meta-analysis including 25,157 women with ovarian cancer from 47 epidemiological studies. *PLoS Med* **9**(4): e1001200.
- DerSimonian R, Laird N (1986) Meta-analysis in clinical trials. *Control Clin Trials* **7**(3): 177–188.
- Diaz ES, Karlan BY, Li AJ (2013) Obesity-associated adipokines correlate with survival in epithelial ovarian cancer. *Gynecol Oncol* **129**(2): 353–357.
- du Bois A, Luck HJ, Meier W, Adams HP, Mobus V, Costa S, Bauknecht T, Richter B, Warm M, Schroder W, Olbricht S, Nitz U, Jackisch C, Emons G, Wagner U, Kuhn W, Pfisterer J. Arbeitsgemeinschaft Gynakologische Onkologie Ovarian Cancer Study G (2003) A randomized clinical trial of cisplatin/paclitaxel versus carboplatin/paclitaxel as first-line treatment of ovarian cancer. *J Natl Cancer Inst* **95**(17): 1320–1329.
- Field KM, Kosmider S, Jefford M, Michael M, Jennens R, Green M, Gibbs P (2008) Chemotherapy dosing strategies in the obese, elderly, and thin patient: results of a nationwide survey. *J Oncol Pract* **4**(3): 108–113.
- Galtier-Dereure F, Capony F, Maudelonde T, Rochefort H (1992) Estradiol stimulates cell growth and secretion of procathepsin D and a 120-kilodalton protein in the human ovarian cancer cell line BG-1. *J Clin Endocrinol Metab* **75**(6): 1497–1502.
- Garcia-Closas M, Brinton LA, Lissowska J, Richesson D, Sherman ME, Szeszenia-Dabrowska N, Peplonska B, Welch R, Yeager M, Zatonski W, Chanock SJ (2007) Ovarian cancer risk and common variation in the sex hormone-binding globulin gene: a population-based case-control study. *BMC Cancer* **7**: 60.
- Gifkins D, Olson SH, Paddock L, King M, Demissie K, Lu SE, Kong AN, Rodriguez-Rodriguez L, Bandera EV (2012) Total and individual antioxidant intake and risk of epithelial ovarian cancer. *BMC Cancer* **12**: 211.
- Glud E, Kjaer SK, Thomsen BL, Hogdall C, Christensen L, Hogdall E, Bock JE, Blaakaer J (2004) Hormone therapy and the impact of estrogen intake on the risk of ovarian cancer. *Arch Intern Med* **164**(20): 2253–2259.
- Goode EL, Chenevix-Trench G, Hartmann LC, Fridley BL, Kalli KR, Vierkant RA, Larson MC, White KL, Keeney GL, Oberg TN, Cunningham JM, Beesley J, Johnatty SE, Chen X, Goodman KE, Armasu SM, Rider DN, Sicotte H, Schmidt MM, Elliott EA, Hogdall E, Kjaer SK, Fasching PA, Ekici AB, Lambrechts D, Despierre E, Hogdall C, Lundvall L, Karlan BY, Gross J, Brown R, Chien J, Duggan DJ, Tsai YY, Phelan CM, Kelemen LE, Peethambaram PP, Schildkraut JM, Shridhar V, Sutphen R, Couch FJ, Sellers TA. Ovarian Cancer Association C (2011) Assessment of hepatocyte growth factor in ovarian cancer mortality. *Cancer Epidemiol Biomarkers Prev* **20**(8): 1638–1648.

- Goode EL, Maurer MJ, Sellers TA, Phelan CM, Kalli KR, Fridley BL, Vierkant RA, Armasu SM, White KL, Keeney GL, Cliby WA, Rider DN, Kelemen LE, Jones MB, Peethambaram PP, Lancaster JM, Olson JE, Schildkraut JM, Cunningham JM, Hartmann LC (2010) Inherited determinants of ovarian cancer survival. *Clin Cancer Res* **16**(3): 995–1007.
- Goodman MT, Lurie G, Thompson PJ, McDuffie KE, Carney ME (2008) Association of two common single-nucleotide polymorphisms in the CYP19A1 locus and ovarian cancer risk. *Endocr Relat Cancer* **15**(4): 1055–1060.
- Griggs JJ, Mangu PB, Anderson H, Balaban EP, Dignam JJ, Hryniuk WM, Morrison VA, Pini TM, Runowicz CD, Rosner GL, Shayne M, Sparreboom A, Sucheston LE, Lyman GH. American Society of Clinical Oncology (2012) Appropriate chemotherapy dosing for obese adult patients with cancer: American Society of Clinical Oncology clinical practice guideline. *J Clin Oncol* **30**(13): 1553–1561.
- Hamajima N, Matsuo K, Saito T, Hirose K, Inoue M, Takezaki T, Kuroishi T, Tajima K (2001) Gene-environment Interactions and Polymorphism Studies of Cancer Risk in the Hospital-based Epidemiologic Research Program at Aichi Cancer Center II (HERPACC-II). *Asian Pac J Cancer Prev* **2**(2): 99–107.
- Harter P, Muallem ZM, Buhmann C, Lorenz D, Kaub C, Hils R, Kommos S, Heitz F, Traut A, du Bois A (2011) Impact of a structured quality management program on surgical outcome in primary advanced ovarian cancer. *Gynecol Oncol* **121**(3): 615–619.
- Hogdall E, Fung ET, Christensen IJ, Yip C, Nedergaard L, Engelholm SA, Risum S, Petri AL, Lundvall L, Lomas L, Hogdall C (2010) Proteomic biomarkers for overall and progression-free survival in ovarian cancer patients. *Proteomics Clin Appl* **4**(12): 940–952.
- Hua K, Feng W, Cao Q, Zhou X, Lu X, Feng Y (2008) Estrogen and progesterone regulate metastasis through the PI3K/AKT pathway in human ovarian cancer. *Int J Oncol* **33**(5): 959–967.
- Jemal A, Bray F, Center MM, Ferlay J, Ward E, Forman D (2011) Global cancer statistics. *CA Cancer J Clin* **61**(2): 69–90.
- Karlan BY, Jones J, Greenwald M, Lagasse LD (1995) Steroid hormone effects on the proliferation of human ovarian surface epithelium in vitro. *Am J Obstet Gynecol* **173**(1): 97–104.
- Kelemen LE, Sellers TA, Schildkraut JM, Cunningham JM, Vierkant RA, Pankratz VS, Fredericksen ZS, Gadre MK, Rider DN, Liebow M, Goode EL (2008) Genetic variation in the one-carbon transfer pathway and ovarian cancer risk. *Cancer Res* **68**(7): 2498–2506.
- Kelesidis I, Kelesidis T, Mantzoros CS (2006) Adiponectin and cancer: a systematic review. *Br J Cancer* **94**(9): 1221–1225.
- Khandekar MJ, Cohen P, Spiegelman BM (2011) Molecular mechanisms of cancer development in obesity. *Nat Rev Cancer* **11**(12): 886–895.
- Lacour RA, Westin SN, Meyer LA, Wingo SN, Schorge JO, Brooks R, Mutch D, Molina A, Sutphen R, Barnes M, Elder J, Teoh D, Powell CB, Choubey V, Blank S, Macdonald HR, Brady MF, Urbauer DL, Bodurka D, Gershenson DM, Lu KH (2011) Improved survival in non-Ashkenazi Jewish ovarian cancer patients with BRCA1 and BRCA2 gene mutations. *Gynecol Oncol* **121**(2): 358–363.
- Langdon SP, Hirst GL, Miller EP, Hawkins RA, Tesdale AL, Smyth JF, Miller WR (1994) The regulation of growth and protein expression by estrogen in vitro: a study of 8 human ovarian carcinoma cell lines. *J Steroid Biochem Mol Biol* **50**(3–4): 131–135.
- Lo-Ciganic WH, Zgibor JC, Bunker CH, Moysich KB, Edwards RP, Ness RB (2012) Aspirin, nonaspirin nonsteroidal anti-inflammatory drugs, or acetaminophen and risk of ovarian cancer. *Epidemiology* **23**(2): 311–319.
- Lurie G, Wilkens LR, Thompson PJ, McDuffie KE, Carney ME, Terada KY, Goodman MT (2008) Combined oral contraceptive use and epithelial ovarian cancer risk: time-related effects. *Epidemiology* **19**(2): 237–243.
- Makowski L, Zhou C, Zhong Y, Kuan PF, Fan C, Sampey BP, Difurio M, Bae-Jump VL (2014) Obesity increases tumor aggressiveness in a genetically engineered mouse model of serous ovarian cancer. *Gynecol Oncol* **133**(1): 90–97.
- McGuire V, Felberg A, Mills M, Ostrow KL, DiCiccio R, John EM, West DW, Whittemore AS (2004) Relation of contraceptive and reproductive history to ovarian cancer risk in carriers and noncarriers of BRCA1 gene mutations. *Am J Epidemiol* **160**(7): 613–618.
- Merritt MA, De Pari M, Vitonis AF, Titus LJ, Cramer DW, Terry KL (2013) Reproductive characteristics in relation to ovarian cancer risk by histologic pathways. *Hum Reprod* **28**(5): 1406–1417.
- Merritt MA, Green AC, Nagle CM, Webb PM (2008) Talcum powder, chronic pelvic inflammation and NSAIDs in relation to risk of epithelial ovarian cancer. *Int J Cancer* **122**(1): 170–176.
- Modesitt SC, van Nagell Jr JR (2005) The impact of obesity on the incidence and treatment of gynecologic cancers: a review. *Obstet Gynecol Surv* **60**(10): 683–692.
- Modugno F, Laskey R, Smith AL, Andersen CL, Haluska P, Oesterreich S (2012) Hormone response in ovarian cancer: time to reconsider as a clinical target? *Endocrine Relat Cancer* **19**(6): R255–R279.
- Olsen CM, Nagle CM, Whiteman DC, Ness R, Pearce CL, Pike MC, Rossing MA, Terry KL, Wu AH, Risch HA, Yu H, Doherty JA, Chang-Claude J, Hein R, Nickels S, Wang-Gohrke S, Goodman MT, Carney ME, Matsuno RK, Lurie G, Moysich K, Kjaer SK, Jensen A, Hogdall E, Goode EL, Fridley BL, Vierkant RA, Larson MC, Schildkraut J, Hoyo C, Moorman P, Weber RP, Cramer DW, Vitonis AF, Bandera EV, Olson SH, Rodriguez-Rodriguez L, King M, Brinton LA, Yang H, Garcia-Closas M, Lissowska J, Anton-Culver H, Ziogas A, Gayther SA, Ramus SJ, Menon U, Gentry-Maharaj A, Webb PM (2013) Obesity and risk of ovarian cancer subtypes: evidence from the Ovarian Cancer Association Consortium. *Endocr Relat Cancer* **20**(2): 251–262.
- Pal T, Permeth-Wey J, Betts JA, Krischer JP, Fiorica J, Arango H, LaPolla J, Hoffman M, Martino MA, Wakeley K, Wilbanks G, Nicosia S, Cantor A, Sutphen R (2005) BRCA1 and BRCA2 mutations account for a large proportion of ovarian carcinoma cases. *Cancer* **104**(12): 2807–2816.
- Pal T, Permeth-Wey J, Kapoor R, Cantor A, Sutphen R (2007) Improved survival in BRCA2 carriers with ovarian cancer. *Fam Cancer* **6**(1): 113–119.
- Parekh N, Chandran U, Bandera EV (2012) Obesity in cancer survival. *Annu Rev Nutr* **32**: 311–342.
- Pavelka JC, Brown RS, Karlan BY, Cass I, Leuchter RS, Lagasse LO, Li AJ (2006) Effect of obesity on survival in epithelial ovarian cancer. *Cancer* **107**(7): 1520–1524.
- Pike MC, Pearce CL, Peters R, Cozen W, Wan P, Wu AH (2004) Hormonal factors and the risk of invasive ovarian cancer: a population-based case-control study. *Fertil Steril* **82**(1): 186–195.
- Poniewierski MS, Crawford J, Dale DC, Culakova E, Kuderer NM, Wolff DA, Lyman GH (2008) Reduced chemotherapy dose intensity in patients with ovarian cancer: Results from a prospective nationwide study. *J Clin Oncol* **26**(Suppl): abstr 16508.
- Protani MM, Nagle CM, Webb PM (2012) Obesity and ovarian cancer survival: a systematic review and meta-analysis. *Cancer Prev Res (Phila)* **5**(7): 901–910.
- Ptak A, Kolaczowska E, Gregoraszczyk EL (2013) Leptin stimulation of cell cycle and inhibition of apoptosis gene and protein expression in OVCAR-3 ovarian cancer cells. *Endocrine* **43**(2): 394–403.
- Ramus SJ, Vierkant RA, Johnatty SE, Pike MC, Van Den Berg DJ, Wu AH, Pearce CL, Menon U, Gentry-Maharaj A, Gayther SA, D'iciccio RA, McGuire V, Whittemore AS, Song H, Easton DF, Pharoah PD, Garcia-Closas M, Chanock S, Lissowska J, Brinton L, Terry KL, Cramer DW, Tworoger SS, Hankinson SE, Berchuck A, Moorman PG, Schildkraut JM, Cunningham JM, Liebow M, Kjaer SK, Hogdall E, Hogdall C, Blaakaer J, Ness RB, Moysich KB, Edwards RP, Carney ME, Lurie G, Goodman MT, Wang-Gohrke S, Kropp S, Chang-Claude J, Webb PM, Chen X, Beesley J, Chenevix-Trench G, Goode EL (2008) Consortium analysis of 7 candidate SNPs for ovarian cancer. *Int J Cancer* **123**(2): 380–388.
- Reeves GK, Pirie K, Beral V, Green J, Spencer E, Bull D. Million Women Study C (2007) Cancer incidence and mortality in relation to body mass index in the Million Women Study: cohort study. *BMJ* **335**(7630): 1134.
- Risch HA, Bale AE, Beck PA, Zheng W (2006) PGR + 331A/G and increased risk of epithelial ovarian cancer. *Cancer Epidemiol Biomarkers Prev* **15**(9): 1738–1741.
- Risum S, Loft A, Hogdall C, Berthelsen AK, Hogdall E, Lundvall L, Nedergaard L, Engelholm SA (2011) Standardized FDG uptake as a prognostic variable and as a predictor of incomplete cytoreduction in primary advanced ovarian cancer. *Acta Oncol* **50**(3): 415–419.
- Rossing MA, Cushing-Haugen KL, Wicklund KG, Doherty JA, Weiss NS (2007) Menopausal hormone therapy and risk of epithelial ovarian cancer. *Cancer Epidemiol Biomarkers Prev* **16**(12): 2548–2556.

- Royar J, Becher H, Chang-Claude J (2001) Low-dose oral contraceptives: protective effect on ovarian cancer risk. *Int J Cancer* **95**(6): 370–374.
- Schemper M, Smith TL (1996) A note on quantifying follow-up in studies of failure time. *Control Clin Trials* **17**(4): 343–346.
- Schildkraut JM, Iversen ES, Wilson MA, Clyde MA, Moorman PG, Palmieri RT, Whitaker R, Bentley RC, Marks JR, Berchuck A (2010) Association between DNA damage response and repair genes and risk of invasive serous ovarian cancer. *PLoS One* **5**(4): e10061.
- Schildkraut JM, Moorman PG, Bland AE, Halabi S, Calingaert B, Whitaker R, Lee PS, Elkins-Williams T, Bentley RC, Marks JR, Berchuck A (2008) Cyclin E overexpression in epithelial ovarian cancer characterizes an etiologic subgroup. *Cancer Epidemiol Biomarkers Prev* **17**(3): 585–593.
- Sieh W, Kobel M, Longacre TA, Bowtell DD, deFazio A, Goodman MT, Hogdall E, Deen S, Wentzensen N, Moysich KB, Brenton JD, Clarke BA, Menon U, Gilks CB, Kim A, Madore J, Fereday S, George J, Galletta L, Lurie G, Wilkens LR, Carney ME, Thompson PJ, Matsuno RK, Kjaer SK, Jensen A, Hogdall C, Kalli KR, Fridley BL, Keeney GL, Vierkant RA, Cunningham JM, Brinton LA, Yang HP, Sherman ME, Garcia-Closas M, Lissowska J, Odunsi K, Morrison C, Lele S, Bshara W, Sucheston L, Jimenez-Linan M, Driver K, Alsop J, Mack M, McGuire V, Rothstein JH, Rosen BP, Bernardini MQ, Mackay H, Oza A, Wozniak EL, Benjamin E, Gentry-Maharaj A, Gayther SA, Tinker AV, Prentice LM, Chow C, Anglesio MS, Johnatty SE, Chenevix-Trench G, Whittemore AS, Pharoah PD, Goode EL, Huntsman DG, Ramus SJ (2013) Hormone-receptor expression and ovarian cancer survival: an Ovarian Tumor Tissue Analysis consortium study. *Lancet Oncol* **14**(9): 853–862.
- Soegaard M, Jensen A, Hogdall E, Christensen L, Hogdall C, Blaakaer J, Kjaer SK (2007) Different risk factor profiles for mucinous and nonmucinous ovarian cancer: results from the Danish MALOVA study. *Cancer Epidemiol Biomarkers Prev* **16**(6): 1160–1166.
- Song H, Ramus SJ, Tyrer J, Bolton KL, Gentry-Maharaj A, Wozniak E, Anton-Culver H, Chang-Claude J, Cramer DW, DiCioccio R, Dork T, Goode EL, Goodman MT, Schildkraut JM, Sellers T, Baglietto L, Beckmann MW, Beesley J, Blaakaer J, Carney ME, Chanock S, Chen Z, Cunningham JM, Dicks E, Doherty JA, Durst M, Ekici AB, Fenstermacher D, Fridley BL, Giles G, Gore ME, De Vivo I, Hillemanns P, Hogdall C, Hogdall E, Iversen ES, Jacobs JJ, Jakubowska A, Li D, Lissowska J, Lubinski J, Lurie G, McGuire V, McLaughlin J, Medrek K, Moorman PG, Moysich K, Narod S, Phelan C, Pye C, Risch H, Runnebaum IB, Severi G, Southey M, Stram DO, Thiel FC, Terry KL, Tsai YY, Tworoger SS, Van Den Berg DJ, Vierkant RA, Wang-Gohrke S, Webb PM, Wilkens LR, Wu AH, Yang H, Brewster W, Ziogas A. Australian Cancer S, Australian Ovarian Cancer Study G, Ovarian Cancer Association C, Houlston R, Tomlinson I, Whittemore AS, Rossing MA, Ponder BA, Pearce CL, Ness RB, Menon U, Kjaer SK, Gronwald J, Garcia-Closas M, Fasching PA, Easton DF, Chenevix-Trench G, Berchuck A, Pharoah PD, Gayther SA (2009) A genome-wide association study identifies a new ovarian cancer susceptibility locus on 9p22.2. *Nat Genet* **41**(9): 996–1000.
- Terry KL, De Vivo I, Titus-Ernstoff L, Shih MC, Cramer DW (2005) Androgen receptor cytosine, adenine, guanine repeats, and haplotypes in relation to ovarian cancer risk. *Cancer Res* **65**(13): 5974–5981.
- World Health Organisation (1995) Physical status: the use and interpretation of anthropometry. *Report of a World Health Organisation Expert Committee*.
- Wu AH, Pearce CL, Tseng CC, Templeman C, Pike MC (2009) Markers of inflammation and risk of ovarian cancer in Los Angeles County. *Int J Cancer* **124**(6): 1409–1415.
- Zhu J, Lu X, Hua KQ, Sun H, Yu YH, Feng YJ (2012) Oestrogen receptor alpha mediates 17beta-estradiol enhancement of ovarian cancer cell motility through up-regulation of survivin expression. *Arch Gynecol Obstet* **286**(3): 729–737.
- Ziogas A, Gildea M, Cohen P, Bringman D, Taylor TH, Seminara D, Barker D, Casey G, Haile R, Liao SY, Thomas D, Noble B, Kurosaki T, Anton-Culver H (2000) Cancer risk estimates for family members of a population-based family registry for breast and ovarian cancer. *Cancer Epidemiol Biomarkers Prev* **9**(1): 103–111.

This work is published under the standard license to publish agreement. After 12 months the work will become freely available and the license terms will switch to a Creative Commons Attribution-NonCommercial-Share Alike 4.0 Unported License

Supplementary Information accompanies this paper on British Journal of Cancer website (<http://www.nature.com/bjc>)



Minerva Access is the Institutional Repository of The University of Melbourne

Author/s:

Nagle, CM; Dixon, SC; Jensen, A; Kjaer, SK; Modugno, F; deFazio, A; Fereday, S; Hung, J; Johnatty, SE; Fasching, PA; Beckmann, MW; Lambrechts, D; Vergote, I; Van Nieuwenhuysen, E; Lambrechts, S; Risch, HA; Rossing, MA; Doherty, JA; Wicklund, KG; Chang-Claude, J; Goodman, MT; Ness, RB; Moysich, K; Heitz, F; du Bois, A; Harter, P; Schwaab, I; Matsuo, K; Hosono, S; Goode, EL; Vierkant, RA; Larson, MC; Fridley, BL; Hogdall, C; Schildkraut, JM; Weber, RP; Cramer, DW; Terry, KL; Bandera, EV; Paddock, L; Rodriguez-Rodriguez, L; Wentzensen, N; Yang, HP; Brinton, LA; Lissowska, J; Hogdall, E; Lundvall, L; Whittemore, A; McGuire, V; Sieh, W; Rothstein, J; Sutphen, R; Anton-Culver, H; Ziogas, A; Pearce, CL; Wu, AH; Webb, PM

Title:

Obesity and survival among women with ovarian cancer: results from the Ovarian Cancer Association Consortium

Date:

2015-09-01

Citation:

Nagle, C. M., Dixon, S. C., Jensen, A., Kjaer, S. K., Modugno, F., deFazio, A., Fereday, S., Hung, J., Johnatty, S. E., Fasching, P. A., Beckmann, M. W., Lambrechts, D., Vergote, I., Van Nieuwenhuysen, E., Lambrechts, S., Risch, H. A., Rossing, M. A., Doherty, J. A., Wicklund, K. G. ,... Webb, P. M. (2015). Obesity and survival among women with ovarian cancer: results from the Ovarian Cancer Association Consortium. *BRITISH JOURNAL OF CANCER*, 113 (5), pp.817-826. <https://doi.org/10.1038/bjc.2015.245>.

Persistent Link:

<http://hdl.handle.net/11343/254841>

File Description:

Published version