

Methodology article

Open Access

Rooting a phylogenetic tree with nonreversible substitution models

Von Bing Yap*¹ and Terry Speed^{2,3}

Address: ¹Mathematics Department, University of California, 970 Evans Hall, Berkeley, CA 94720, USA, ²Statistics Department, University of California, 367 Evans Hall, Berkeley, CA 94720, USA and ³Division of Genetics and Bioinformatics, The Walter & Eliza Hall Institute of Medical Research, 1G Royal Parade, Parkville, Vic 3052, Australia

Email: Von Bing Yap* - vonbing@math.berkeley.edu; Terry Speed - terry@stat.berkeley.edu

* Corresponding author

Published: 04 January 2005

Received: 05 August 2004

BMC Evolutionary Biology 2005, 5:2 doi:10.1186/1471-2148-5-2

Accepted: 04 January 2005

This article is available from: <http://www.biomedcentral.com/1471-2148/5/2>

© 2005 Yap and Speed; licensee BioMed Central Ltd.

This is an Open Access article distributed under the terms of the Creative Commons Attribution License (<http://creativecommons.org/licenses/by/2.0>), which permits unrestricted use, distribution, and reproduction in any medium, provided the original work is properly cited.

Abstract

Background: We compared two methods of rooting a phylogenetic tree: the stationary and the nonstationary substitution processes. These methods do not require an outgroup.

Methods: Given a multiple alignment and an unrooted tree, the maximum likelihood estimates of branch lengths and substitution parameters for each associated rooted tree are found; rooted trees are compared using their likelihood values. Site variation in substitution rates is handled by assigning sites into several classes before the analysis.

Results: In three test datasets where the trees are small and the roots are assumed known, the nonstationary process gets the correct estimate significantly more often, and fits data much better, than the stationary process. Both processes give biologically plausible root placements in a set of nine primate mitochondrial DNA sequences.

Conclusions: The nonstationary process is simple to use and is much better than the stationary process at inferring the root. It could be useful for situations where an outgroup is unavailable.

Background

Several approaches for inferring a phylogenetic tree from the substitution patterns in multiply aligned sequences are available; they include maximum parsimony, distance-based, maximum likelihood and Bayesian methods [1]. Typically, the inferred tree is unrooted, because the explicit or implicit substitution process used is usually time-reversible. An effective way to put the root on the unrooted tree is to perform a phylogenetic analysis on the sequences of interest together with an outgroup, which is a set of distantly related sequences [2,3]. If the ingroup is monophyletic in the combined phylogenetic tree, then the point where the outgroup touches the ingroup tree is the estimated root. The practical challenge is to find suitable outgroups, and if no such outgroup is available, then

one is forced to root the tree using just the ingroup. Several such methods include the molecular clock and non-reversible substitution processes. It seems clear that compared to the outgroup method, the success of these methods is more dependent on the extent to which the accompanying assumptions about the substitution process are satisfied in the data. For example, the molecular clock method should work well if the lineages indeed evolved more or less at the same rate. Likewise, as shown by Huelsenbeck *et al.* [4], a nonreversible process is more likely to succeed the less reversible the real substitution process is.

The nonreversible substitution process, introduced by Yang [5], is *stationary*, i.e., the sequence composition is

Table 1: Human, chimpanzee and gorilla Log-likelihoods (rounded to closest integer) of the MLEs for three rooted trees under the nonstationary (NONSTA), stationary (STA) and reversible (REV) models. If NONSTA or STA places the root correctly, the corresponding log likelihood appears in bold.

gene	root placement	NONSTA	STA	REV
ATP6	human	-1320	-1324	-1324
	chimp	-1318	-1323	-1324
	gorilla	-1318	-1322	-1324
ATP8	human	-384	-389	-392
	chimp	-384	-389	-392
	gorilla	-384	-389	-392
COX1	human	-2842	-2876	-2877
	chimp	-2846	-2874	-2876
	gorilla	-2834	-2875	-2876
COX2	human	-1285	-1293	-1295
	chimp	-1286	-1294	-1295
	gorilla	-1281	-1292	-1295
COX3	human	-1477	-1493	-1496
	chimp	-1476	-1493	-1496
	gorilla	-1472	-1493	-1496
CYTB	human	-2205	-2236	-2236
	chimp	-2208	-2235	-2236
	gorilla	-2203	-2235	-2236
ND1	human	-1787	-1804	-1805
	chimp	-1783	-1804	-1805
	gorilla	-1776	-1802	-1805
ND2	human	-1949	-1974	-1975
	chimp	-1950	-1974	-1975
	gorilla	-1941	-1974	-1975
ND3	human	-663	-679	-680
	chimp	-666	-679	-680
	gorilla	-665	-679	-680
ND4	human	-2593	-2612	-2613
	chimp	-2589	-2612	-2613
	gorilla	-2579	-2612	-2613
ND4L	human	-519	-525	-525.8
	chimp	-523	-525	-525.8
	gorilla	-520	-526	-525.8
ND5	human	-3600	-3624	-3629
	chimp	-3611	-3628	-3629
	gorilla	-3583	-3628	-3629
ND6	human	-913	-917	-918
	chimp	-912	-917	-918
	gorilla	-913	-917	-918

unchanged in time, and is equal to the equilibrium distribution of the rate matrix Q . The consensus is that it does not have enough power to discriminate among the candidate rooted trees. In this paper, we investigate a slightly more general, nonstationary process: in which the initial distribution π may not be the equilibrium distribution of the rate matrix Q . A priori, giving up stationarity is expected to produce a much better fit to data, since sequence composition is known to evolve, and should be accounted for. Indeed, substitution models where each branch has its own rate matrices had been used to resolve deep splittings in certain phylogenetic trees; see Yang and Roberts, and Galtier and Gouy [6,7]. Our process, which to our knowledge has not been investigated in this context, may be viewed as the simplest case of such nonstationary processes, with many fewer parameters. Thus, it can be used to decide whether the substitution processes on certain branches should be modeled differently. The input to our procedure is a multiple alignment and the topology of an unrooted binary tree. For each rooted tree associated with the given unrooted tree, we seek the maximum likelihood (ML) estimates of the branch lengths, π and Q . The rooted trees are then ranked in descending order of likelihoods. We model systematic variation in substitution rates among sites by assigning sites into several classes, and the relative rate for each class is estimated by ML; this is equivalent to the combined analysis framework of Yang [8].

We compared the ability of the stationary and nonstationary processes to place the root in three groups of species where the answer is considered well-known: (1) human, chimpanzee and gorilla, (2) human, chimpanzee, gorilla and orangutan, (3) human, mouse, chicken and frog (*xenopus laevis*). The analyses were based on all available mitochondrial protein-coding genes, as well as two nuclear protein-coding genes. Next, we applied the methods to a set of primate mitochondrial DNA sequences.

Results

Verification studies

We fitted the nonstationary (NONSTA), stationary (STA) and reversible (REV) substitution models to all available mitochondrial protein-coding genes, as well as the nuclear genes *albumin* and *c-myc*, for three groups of organisms: (1) human, chimpanzee and gorilla, (2) human, chimpanzee, gorilla and orangutan, and (3) human, mouse, chicken and frog (*xenopus laevis*). The sequences were downloaded from Genbank and aligned using the CLUSTALW alignment of the amino acid sequences. Most alignments looked quite solid [see Additional files]. The beginning of the alignments for the genes *COX1*, *CYTB*, *ND1* and *ND6* were slightly adjusted. The root positions are assumed to be on the (1) gorilla, (2) orangutan, and (3) frog branch, respectively. The

Table 2: Human, chimpanzee, gorilla and orangutan Log-likelihoods (rounded to closest integer) of the MLEs for five rooted trees under the nonstationary (NONSTA), stationary (STA) and reversible (REV) models. If NONSTA or STA places the root correctly, the corresponding log likelihood appears in bold.

gene	root placement	NONSTA	STA	REV
ATP6	human	-1649	-1654	-1655
	chimp	-1647	-1654	-1655
	gorilla	-1647	-1654	-1655
	orangutan	-1642	-1654	-1655
	interior	-1647	-1654	-1655
ATP8	human	-510	-514	-517
	chimp	-510	-515	-517
	gorilla	-509	-515	-517
	orangutan	-509	-515	-517
	interior	-509	-515	-517
COX1	human	-3456	-3465	-3467
	chimp	-3450	-3464	-3467
	gorilla	-3448	-3465	-3467
	orangutan	-3437	-3465	-3467
	interior	-3453	-3465	-3467
COX2	human	-1485	-1496	-1497
	chimp	-1485	-1496	-1497
	gorilla	-1481	-1492	-1497
	orangutan	-1479	-1492	-1497
	interior	-1480	-1492	-1497
COX3	human	-1769	-1791	-1796
	chimp	-1780	-1791	-1796
	gorilla	-1781	-1794	-1796
	orangutan	-1772	-1794	-1796
	interior	-1780	-1791	-1796
CYTB	human	-2593	-2673	-2674
	chimp	-2594	-2673	-2674
	gorilla	-2590	-2672	-2674
	orangutan	-2581	-2672	-2674
	interior	-2588	-2672	-2674
ND1	human	-2214	-2234	-2236
	chimp	-2210	-2235	-2236
	gorilla	-2205	-2234	-2236
	orangutan	-2191	-2233	-2236
	interior	-2209	-2235	-2236
ND2	human	-2441	-2469	-2470
	chimp	-2443	-2469	-2470
	gorilla	-2437	-2469	-2470
	orangutan	-2423	-2469	-2470
	interior	-2437	-2469	-2470
ND3	human	-837	-855	-856
	chimp	-840	-855	-856
	gorilla	-838	-856	-856
	orangutan	-834	-855	-856
	interior	-838	-855	-856

Table 2: Human, chimpanzee, gorilla and orangutan Log-likelihoods (rounded to closest integer) of the MLEs for five rooted trees under the nonstationary (NONSTA), stationary (STA) and reversible (REV) models. If NONSTA or STA places the root correctly, the corresponding log likelihood appears in bold. (Continued)

ND4	human	-3151	-3206	-3209
	chimp	-3149	-3205	-3209
	gorilla	-3141	-3205	-3209
	orangutan	-3169	-3207	-3209
	interior	-3145	-3206	-3209
ND4L	human	-623	-631	-631
	chimp	-622	-631	-631
	gorilla	-620	-631	-631
	orangutan	-619	-631	-631
	interior	-621	-631	-631
ND5	human	-4469	-4501	-4503
	chimp	-4474	-4502	-4503
	gorilla	-4453	-4502	-4503
	orangutan	-4448	-4503	-4503
	interior	-4466	-4502	-4503
ND6	human	-1069	-1076	-1078
	chimp	-1067	-1076	-1078
	gorilla	-1070	-1077	-1078
	orangutan	-1068	-1077	-1078
	interior	-1069	-1076	-1078

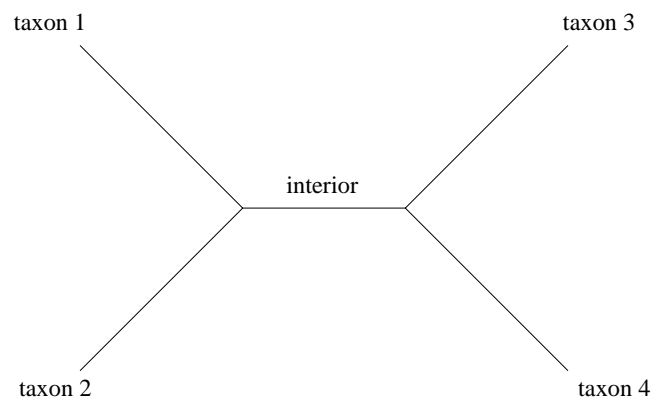


Figure 1
Unrooted tree with four taxa The four branches adjacent to leaf nodes will be referred to by the corresponding taxon names.

Table 3: Human, mouse, chicken and frog Log-likelihoods (rounded to closest integer) of the MLEs for five rooted trees under the nonstationary (NONSTA), stationary (STA) and reversible (REV) models. If NONSTA or STA places the root correctly, the corresponding log likelihood appears in bold.

gene	root placement	NONSTA	STA	REV
Albumin	human	-7722	-7728	-7731
	mouse	-7708	-7728	-7731
	chicken	-7723	-7731	-7731
	frog	-7705	-7728	-7731
	interior	-7723	-7728	-7731
ATP6	human	-2608	-2619	-2620
	mouse	-2607	-2619	-2620
	chicken	-2590	-2619	-2620
	frog	-2585	-2618	-2620
	interior	-2585	-2618	-2620
ATP8	human	-679	-680	-682
	mouse	-677	-681	-682
	chicken	-675	-679	-682
	frog	-678	-680	-682
	interior	-675	-680	-682
Cmyc	human	-3872	-3885	-3887
	mouse	-3869	-3885	-3887
	chicken	-3854	-3883	-3887
	frog	-3814	-3882	-3887
	interior	-3853	-3883	-3887
COX I	human	-4704	-4792	-4794
	mouse	-4709	-4791	-4794
	chicken	-4700	-4794	-4794
	frog	-4679	-4791	-4794
	interior	-4698	-4792	-4794
COX2	human	-2382	-2399	-2400
	mouse	-2382	-2399	-2400
	chicken	-2377	-2398	-2400
	frog	-2375	-2398	-2400
	interior	-2376	-2399	-2400
COX3	human	-2502	-2537	-2542
	mouse	-2503	-2540	-2542
	chicken	-2483	-2538	-2542
	frog	-2485	-2539	-2542
	interior	-2486	-2540	-2542
CYTB	human	-3782	-3833	-3836
	mouse	-3783	-3832	-3836
	chicken	-3760	-3832	-3836
	frog	-3747	-3832	-3836
	interior	-3760	-3833	-3836
NDI	human	-3457	-3483	-3486
	mouse	-3443	-3483	-3486
	chicken	-3435	-3484	-3486
	frog	-3434	-3482	-3486
	interior	-3442	-3482	-3486

Table 3: Human, mouse, chicken and frog Log-likelihoods (rounded to closest integer) of the MLEs for five rooted trees under the nonstationary (NONSTA), stationary (STA) and reversible (REV) models. If NONSTA or STA places the root correctly, the corresponding log likelihood appears in bold.

ND2	human	-4275	-4298	-4300
	mouse	-4275	-4298	-4300
	chicken	-4258	-4298	-4300
	frog	-4253	-4296	-4300
	interior	-4255	-4299	-4300
ND3	human	-1348	-1353	-1355
	mouse	-1347	-1351	-1355
	chicken	-1337	-1353	-1355
	frog	-1335	-1352	-1355
	interior	-1335	-1353	-1355
ND4	human	-5382	-5406	-5406
	mouse	-5380	-5406	-5406
	chicken	-5366	-5404	-5406
	frog	-5345	-5405	-5406
	interior	-5365	-5405	-5406
ND4L	human	-1259	-1261	-1265
	mouse	-1259	-1264	-1265
	chicken	-1254	-1262	-1265
	frog	-1245	-1263	-1265
	interior	-1254	-1263	-1265
ND5	human	-7053	-7089	-7094
	mouse	-7053	-7091	-7094
	chicken	-7034	-7093	-7094
	frog	-7006	-7090	-7094
	interior	-7029	-7091	-7094
ND6	human	-2022	-2025	-2028
	mouse	-2020	-2025	-2028
	chicken	-1995	-2023	-2028
	frog	-1998	-2025	-2028
	interior	-1998	-2025	-2028

branches on a tree are referred to by the organism names, except for the case of four taxa, where there is an internal branch (Figure 1). For groups (2) and (3), it was assumed that human was most closely related to chimpanzee and mouse respectively; thus the unrooted tree is determined.

In group 1, the NONSTA and STA processes correctly placed the root in 8 and 6 genes respectively, out of 13 genes (Table 1). In group 2, NONSTA correctly placed the root in 9 genes out of 13 genes, compared to 2 genes for STA (Table 2). In group 3, NONSTA correctly placed the root in 11 genes out of 15 genes, compared to 7 genes for STA (Table 3). Furthermore, NONSTA gives stronger signal, or has better discriminative power: the highest-scor-

Table 4: Combined analysis Combined log likelihoods over all genes under the nonstationary (NONSTA), stationary (STA), and reversible (REV) models. If NONSTA or STA places the root correctly, the corresponding log likelihood appears in bold.

group	root placement	NONSTA	STA	REV
1	human	-21536	-21743	-21765
	chimp	-21551	-21746	-21765
	gorilla	-21470	-21744	-21765
2	human	-26266	-26566	-26589
	chimp	-26270	-26567	-26589
	gorilla	-26223	-26566	-26589
	orangutan	-26172	-26566	-26589
	interior	-26241	-26563	-26589
3	human	-53049	-53387	-53427
	mouse	-53029	-53393	-53427
	chicken	-52848	-53388	-53427
	frog	-52682	-53382	-53427
	interior	-52833	-53391	-53427

ing rooted tree often has noticeably higher log likelihoods than competing rooted trees; this is not so with STA. Thus, NONSTA is much better than STA in placing the root at the individual gene level. Combining the log likelihoods across genes yields overall evidence for the root placements. Table 4 shows that NONSTA is unambiguously correct in all three analyses, while STA only gets the root correctly in group 3, and the signal is weak.

The nuclear genes *albumin* and *c-myc* and three mitochondrial genes, *COX1*, *COX2* and *ATP6* from group 3 (with some mouse genes replaced with rat genes) were studied by Huelsenbeck *et al.* [4]. For these five genes, NONSTA and STA performed equally, getting all the correct root placements, except for *ATP6*, with NONSTA again noticeably more discriminative.

Primate mitochondrial DNA

Brown *et al.* and Yang [5,9] studied a set of mitochondrial DNA (mtDNA) sequences from human, chimpanzee, gorilla, orangutan, gibbon, crab-eating monkey, squirrel monkey, tarsier and lemur. The topology of Yang's unrooted tree and the branch labels are shown in Figure 2. The mtDNA sequences consist of two protein-coding fragments, separated by three RNA genes. Thus, four site classes are required. Analysis with NONSTA shows that the root is most likely on the tarsier branch, followed closely by the lemur and "f" branches, and the corresponding log likelihoods are quite different from the others (see Table 5). Under STA, the most likely root placements are on the squirrel monkey and lemur

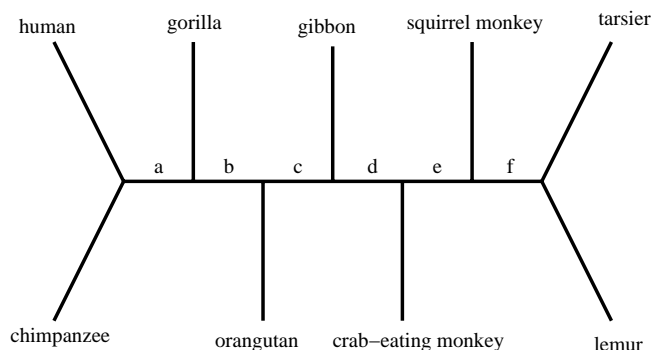


Figure 2
Unrooted tree for nine primate mtDNA sequences
 The assumed unrooted tree is that presented in Yang [5]. The branches adjacent to leaf nodes are referred to by the corresponding organisms, while the interior branches are labelled a through f as indicated.

Table 5: Nine primates Log-likelihoods (rounded to closest integer) of the MLEs for 15 rooted trees under the nonstationary (NONSTA), stationary (STA) and reversible (REV) models.

root placement	NONSTA	STA	REV
human	-4960	-4965	-4965
chimp	-4959	-4965	-4965
gorilla	-4961	-4965	-4965
orangutan	-4961	-4965	-4965
gibbon	-4962	-4964	-4965
crab-eating macaque	-4955	-4963	-4965
squirrel monkey	-4941	-4961	-4965
tarsier	-4932	-4963	-4965
lemur	-4935	-4961	-4965
a	-4962	-4965	-4965
b	-4961	-4965	-4965
c	-4961	-4964	-4965
d	-4957	-4964	-4965
e	-4948	-4963	-4965
f	-4936	-4963	-4965

branches. Thus, both processes give predictions that are consistent (NONSTA more than STA) with the idea that the root should be somewhere near tarsier and lemur. However, as observed before, NONSTA has much greater discriminative power, and fits the data much better, than STA.

Discussion

Our results confirmed earlier findings that the stationary process (STA) is not very good at discriminating among rooted trees corresponding to the same unrooted tree. In contrast, the nonstationary (NONSTA) process seems

much more effective, with individual genes, and with combined genes. It is quite clear that the difference in log likelihoods between fitting STA and the reversible process (REV) is often small, and statistically insignificant, based on the likelihood ratio test, while those between NONSTA and STA, and between NONSTA and REV, are often large, and statistically very significant. Though the chi-square distribution may be inappropriate [10], it seems to be satisfactory in practice [11]. This indicates that NONSTA fits the data much better than STA and REV. Thus it appears that allowing an initial distribution that is uncoupled with the rate matrix gives a better description of the data, and that the greater capacity of NONSTA over STA at estimating the root placement may stem from the ability of NONSTA to allow for some amount of evolution in base composition.

Although Huelsenbeck *et al.*'s analysis using STA failed to place the root correctly in any of the genes *albumin*, *c-myc*, *COX1*, *COX2* and *ATP6*, there are some differences between the analyses. The raw data were different: the rat *albumin* and *c-myc* genes were used by Huelsenbeck *et al.*; since mouse and rat are very similar, this is not likely to matter much. Secondly, the alignments were probably different, though since the sequences are quite similar, this should not be too important. It is plausible that most of the discrepancies between the results is due to the difference in the estimation procedure (maximum likelihood vs. Bayesian) and to the fact that in Huelsenbeck *et al.*, site variation was modeled by the gamma distribution [12], whereas here we only accounted for the codon position effect.

Estimates of the relative rates are quite independent of the model used, and their relative magnitudes are largely within expectations. In particular, for group 3, the relative rates for codon positions 1, 2, and 3 fall between .2 and 1.1, .1 and .6, and 1.5 and 2.7 respectively. For all genes, the third codon position evolved the fastest, followed by the first and second positions. To gauge the contribution from the third codon position, we left out the corresponding bases in group 3 and reran the analysis with NONSTA. This gave the correct root placement in only three genes: *albumin*, *c-myc* and *ND2*, showing the usefulness of the third codon position in this dataset, despite its markedly higher substitution rates. We also found that the pairwise identity at the third codon positions for all genes in groups 3 ranges from 34% to 61%. Base composition being generally nonuniform, the expected pairwise identity at saturation (i.e., infinite evolutionary distance) is lower than 25%. This seems to indicate that the third codon position is not saturated, and hence the phylogenetic information from this position is not just the base composition at each taxon. In addition, the base composition at the third codon position for some genes is quite

different from the other positions. Our model does not fit these genes as well as a model where separate processes are associated with the codon positions. Such a model will be investigated in future.

The NONSTA process is only slightly more complicated to apply, compared to the STA and REV processes. The fact that it works quite well in the verification studies and predicts biologically plausible roots for the nine-primate data demonstrates its utility and perhaps argues for its use in routine phylogenetic analysis. In any case, if no suitable outgroup is available, it could be worthwhile to try it. Though the NONSTA process is the most general time-homogeneous Markov process, it is still simplistic and imposes a severe constraint on the evolution of base composition: if two leaf nodes are at the same distance from the root, then the process stipulates that the corresponding sequences must have the same composition. This is patently unrealistic: once lineages split, they should evolve quite independently, and may explain the failure of the process at estimating the root placement for some genes. However, it is still valuable even if it does not always work, in that it can serve as a base from which exploration of richer models can be launched. For instance, one could identify lineages where the evolution significantly deviates from expectations, and then allow these lineages to have different rate matrices, which brings us closer to the very rich models of [6,7,13,14].

Conclusions

The nonstationary substitution process is simple to use, has much greater power at estimating the root compared to the stationary process, and also fits data much better than the stationary and reversible processes. It seems feasible to use this process in analyses where a suitable outgroup is not easily available. It is also a good starting point for conducting more sophisticated phylogenetic analysis with richer models.

Methods

Substitutions in DNA sequences are assumed to occur independently at each site according to a Markov process, i.e., given the present base, future substitutions are independent of past substitutions.

Furthermore, it is assumed that the process is time-homogeneous, i.e., substitution rates stay constant in time. As usual, the substitution rate from base *a* to *b* is the (*a*, *b*)-entry in a 4×4 rate matrix *Q*; the diagonal entries are such that each row sums to 0. For any $t > 0$, the transition probability *P*(*t*) is given by $P(t) = \exp(Qt)$. Let π be a probability distribution on the DNA bases. The pair (π , *Q*) defines a substitution process on a rooted tree, as follows: pick a base at the root according to π , then run the substitution process according to *Q* down the tree, splitting into inde-

pendent copies whenever a branching is encountered. The joint probability of the observed bases at the leaf nodes can be computed using almost exactly the same algorithm by [15].

There are two important special cases of the time-homogeneous process (π, Q) . Associated with the rate matrix Q is a unique distribution π_Q , called the equilibrium distribution of Q , such that the matrix product $\pi_Q \times Q$ is the zero vector. The process (π_Q, Q) is *stationary*, i.e., the sequence composition remains unchanged through time, and is described by π_Q . Q is said to be *reversible* if it satisfies the detailed balance condition:

$$\Pi_Q Q = Q' \Pi_Q$$

where Π_Q is the diagonal form of π_Q and Q' is the transpose of Q . The process (π_Q, Q) is then *reversible*, i.e., statistically the process looks the same in forward and backward time. In particular, as shown in [15], the joint distribution of the leaf bases is the same regardless of where the root is placed on the tree. The reversible process is known as the REV or time-reversible process in the molecular evolution literature [5,16,17]. Special cases of the REV process include those by Jukes and Cantor, Kimura, Felsenstein (two processes), Hasegawa, Kishino and Yano, and Tamura and Nei [15,18-22]. The nonreversible stationary process was first explored by Yang [5], and subsequently by Huelsenbeck *et al.* [4]. Yang referred to this process as "unrestricted", but we use the abbreviation STA here. We shall refer to the nonstationary process as NONSTA. The numbers of free parameters in the NONSTA, STA and REV processes are respectively 15 (3 in π and 12 off-diagonal entries in Q), 12 (off-diagonal entries in Q) and 9 (3 in π_Q and 12 off-diagonal entries in Q , minus 6 detailed balance constraints). Since the models are nested, the likelihood ratio test can be used to assess the relative goodness-of-fit of the MLEs. It is standard practice to allow only calibrated rate matrices, i.e., Q satisfies

$$-\sum_a \pi_Q(a) Q(a, a) = 1$$

so that a branch length is the average number of substitution events per site. We adopt this practice, and remark that for the nonstationary process (π, Q) , with calibrated Q , since in general $\pi \neq \pi_Q$, it is not true that the expected number of substitutions in 1 time unit is 1, but the difference gets arbitrarily small as time goes to infinity.

The sites in a DNA sequences can have very different substitution rates, the most well-known example being coding sequences, where the third codon positions evolved much faster than the others because of the degeneracy of the genetic code. In cases where the assignment of sites

into several classes is known in advance, such as a coding sequence, the easiest way to deal with it is to associate to class i an unknown positive number r_i , with the constraint that

$$\sum_i r_i n_i = \sum_i n_i$$

where n_i is the number of sites in class i . The relative rate r_i either expands or shrinks the tree depending on whether it is more or less than 1. The constraint gives a new interpretation of a branch length: it is now the average over all sites of their expected number of substitutions. Thus, this approach is similar to [8]: effectively, the classes are treated as separate datasets. In this study, coding sequences are divided into three classes by codon position. In the last dataset consisting of nine primate mitochondrial sequences, an additional class is created to account for the RNA-coding bases. Another source of site variation is related to the three-dimensional structure of the protein. For example, hydrophilic residues are usually exposed, hence tend to evolve faster than hydrophobic residues which are deeply buried. Our present approach does not model this and other less obvious sources of site variation. Possible remedies include using the gamma distribution [12] or the hidden Markov model [23].

Given a rooted tree relating aligned coding sequences, we seek the ML estimates of the branch lengths, the substitution parameters, and the relative rates. For other sequences, the relative rates are not estimated. Gradient-based methods are perhaps the most efficient at finding the maximum. The EM algorithm [24] is another possibility. We implemented the simplex method [25], which is slower but is less likely to be misled to local maxima than gradient-based methods. To further reduce the chance of being fooled by local maxima, different initial estimates were used, and the final estimates with the highest likelihood was picked. The initial estimates were obtained by first deriving a reversible rate matrix from a pairwise comparison of two sequences, then using the associated REV process to find the most likely branch lengths and relative rates; all pairwise comparisons were used in this study, so that, for example, four taxa give six initial estimates.

The estimation procedure was implemented in C, and the source code can be requested from the first author.

Authors' contributions

The idea was conceived by the first author and was inspired and refined by the second author. The first author composed the code and performed the data analysis.

Additional material

Additional File 1

A text file containing the amino acid sequence alignments for group 1.
Click here for file
[<http://www.biomedcentral.com/content/supplementary/1471-2148-5-2-S1.aln>]

Additional File 2

A text file containing the amino acid sequence alignments for group 2.
Click here for file
[<http://www.biomedcentral.com/content/supplementary/1471-2148-5-2-S2.aln>]

Additional File 3

A text file containing the amino acid sequence alignments for group 3.
Click here for file
[<http://www.biomedcentral.com/content/supplementary/1471-2148-5-2-S3.aln>]

Acknowledgements

Ziheng Yang kindly provided the alignment of the primate mtDNA sequences and entertained numerous enquiries. Several programs in the PAML package were used in the data analysis. We thank the referees for many comments and suggestions, and agree that more work is needed to investigate the notion of evolutionary time in nonstationary substitution processes, as well as the utility of our method in rooting larger trees.

References

- Felsenstein J: *Inferring Phylogenies* Sunderland, Massachusetts: Sinauer Associates, Inc; 2004.
- Maddison WP, Donoghue MJ, Maddison DR: **Outgroup analysis and parsimony.** *Syst Zool* 1984, **33**:83-103.
- Wheeler WC: **Nucleic acid sequence phylogeny and random outgroups.** *Cladistics* 1990, **6**:363-368.
- Huelsenbeck JP, Bollback JP, M LA: **Inferring the root of a phylogenetic tree.** *Sys Biol* 2002, **51**:32-43.
- Yang Z: **Estimating the pattern of nucleotide substitution.** *J Mol Evol* 1994, **39**:105-111.
- Yang Z, Roberts D: **On the use of nucleic acid sequences to infer early branchings in the tree of life.** *Mol Biol Evol* 1995, **12**:451-458.
- Galtier N, Gouy M: **Inferring pattern and process: Maximum-likelihood implementation of a nonhomogeneous model of DNA sequence evolution for phylogenetic analysis.** *Mol Biol Evol* 1998, **15**:871-879.
- Yang Z: **Maximum-likelihood models for combined analyses of multiple sequence data.** *J Mol Evol* 1996, **42**:587-596.
- Brown WM, Prager EM, Wang A, Wilson AC: **Mitochondrial DNA sequences of primates, tempo and mode of evolution.** *J Mol Evol* 1982, **18**:225-239.
- Goldman N: **Statistical tests of models of DNA substitution.** *J Mol Evol* 1993, **36**:182-198.
- Yang Z, Goldman N, Friday A: **Maximum likelihood trees from DNA sequences: A peculiar statistical estimation problem.** *Syst Biol* 1995, **44**:384-399.
- Yang Z: **Maximum-likelihood estimation of phylogeny from DNA sequences when substitution rates differ over sites.** *Mol Biol Evol* 1993, **10**:1396-1401.
- Barry D, Hartigan JA: **Statistical analysis of hominoid molecular evolution.** *Statistical Science* 1987, **2**:191-207.
- Chang JT: **Full reconstruction of Markov models on evolutionary trees: Identifiability and consistency.** *Mathematical Biosciences* 1996, **137**:51-73.
- Felsenstein J: **Evolutionary trees from DNA sequences: a maximum likelihood approach.** *J Mol Evol* 1981, **17**:368-376.
- Lanave C, Preparata G, Saccone C, Serio G: **A new method for calculating evolutionary substitution rates.** *J Mol Evol* 1984, **20**:86-93.
- Tavaré S: **Some probabilistic and statistical problems in the analysis of DNA sequences.** *Lectures on Mathematics in the Life Sciences* 1986, **17**:57-86.
- Jukes TH, Cantor C: **Evolution of protein molecules.** In *Mammalian Protein Metabolism* Edited by: Munro HN. Academic Press; 1969:21-132.
- Kimura M: **A simple method for estimating evolutionary rates of base substitutions through comparative studies of nucleotide sequences.** *J Mol Evol* 1980, **16**:111-120.
- Kishino H, Hasegawa M: **Converting distance to time: Application to human evolution.** *Methods in Enzymology* 1990, **183**:550-570.
- Hasegawa M, Kishino H, Yano T: **Dating the human-ape splitting by a molecular clock of mitochondrial DNA.** *J Mol Evol* 1985, **22**:160-174.
- Tamura K, Nei M: **Estimation of the number of nucleotide substitutions in the control region of mitochondrial DNA in humans and chimpanzees.** *Mol Biol Evol* 1993, **10**:512-526.
- Felsenstein J, Churchill GA: **A hidden Markov model approach to variation among sites in rate of evolution.** *Mol Biol Evol* 1996, **13**:93-104.
- Holmes IP, Rubin GM: **An expectation maximization algorithm for training hidden substitution models.** *J Mol Biol* 2002, **317**:753-764.
- Nelder JA, Mead R: **A simplex method for function minimization.** *Comput J* 1965, **7**:308-313.

Publish with **BioMed Central** and every scientist can read your work free of charge

"BioMed Central will be the most significant development for disseminating the results of biomedical research in our lifetime."

Sir Paul Nurse, Cancer Research UK

Your research papers will be:

- available free of charge to the entire biomedical community
- peer reviewed and published immediately upon acceptance
- cited in PubMed and archived on PubMed Central
- yours — you keep the copyright

Submit your manuscript here:
http://www.biomedcentral.com/info/publishing_adv.asp





Minerva Access is the Institutional Repository of The University of Melbourne

Author/s:

Yap, VB; Speed, T

Title:

Rooting a phylogenetic tree with nonreversible substitution models

Date:

2005-01-04

Citation:

Yap, V. B. & Speed, T. (2005). Rooting a phylogenetic tree with nonreversible substitution models. BMC EVOLUTIONARY BIOLOGY, 5 (1), <https://doi.org/10.1186/1471-2148-5-2>.

Persistent Link:

<http://hdl.handle.net/11343/259474>

File Description:

Published version

License:

CC BY