

## Points of View

*Syst. Biol.* 61(2):346–359, 2012

© The Author(s) 2011. Published by Oxford University Press, on behalf of the Society of Systematic Biologists. All rights reserved.

This is an Open Access article distributed under the terms of the Creative Commons Attribution Non-Commercial License (<http://creativecommons.org/licenses/by-nc/3.0>), which permits unrestricted non-commercial use, distribution, and reproduction in any medium, provided the original work is properly cited.

DOI:10.1093/sysbio/syr107

Advance Access publication on November 21, 2011

### Best Practices for Justifying Fossil Calibrations

JAMES F. PARHAM<sup>1,2,\*</sup>, PHILIP C. J. DONOGHUE<sup>3</sup>, CHRISTOPHER J. BELL<sup>4</sup>, TYLER D. CALWAY<sup>5</sup>,  
JASON J. HEAD<sup>6</sup>, PATRICIA A. HOLROYD<sup>7</sup>, JUN G. INOUE<sup>8</sup>, RANDALL B. IRMIS<sup>9</sup>,  
WALTER G. JOYCE<sup>10</sup>, DANIEL T. KSEPKA<sup>11,12</sup>, JOSÉ S. L. PATANÉ<sup>13</sup>, NATHAN D. SMITH<sup>14,15</sup>,  
JAMES E. TARVER<sup>3,16</sup>, MARCEL VAN TUINEN<sup>17</sup>, ZIHENG YANG<sup>18</sup>, KENNETH D. ANGIELCZYK<sup>15</sup>,  
JENNY M. GREENWOOD<sup>3</sup>, CHRISTY A. HIPSLEY<sup>19,20</sup>, LOUIS JACOBS<sup>21</sup>, PETER J. MAKOVICKY<sup>15</sup>,  
JOHANNES MÜLLER<sup>19</sup>, KRISTER T. SMITH<sup>22</sup>, JESSICA M. THEODOR<sup>23</sup>, RACHEL C. M. WARNOCK<sup>3</sup>,  
AND MICHAEL J. BENTON<sup>3</sup>

<sup>1</sup>Alabama Museum of Natural History, University of Alabama, 427 6th Avenue, Smith Hall, Box 870340, Tuscaloosa, AL 35487, USA; <sup>2</sup>BioSynC, The Field Museum of Natural History, 1400 S Lake Shore Drive, Chicago, IL 60657, USA; <sup>3</sup>School of Earth Sciences, University of Bristol, Bristol BS8 1RJ, UK; <sup>4</sup>Department of Geological Sciences, The University of Texas at Austin, 1 University Station, C1100, Austin, TX 78712, USA; <sup>5</sup>Department of the Geophysical Sciences, University of Chicago, 5734 South Ellis Avenue, Chicago, IL 60637, USA; <sup>6</sup>Department of Earth and Atmospheric Sciences, University of Nebraska-Lincoln, 228 Bessey Hall, Lincoln, NE 68588-0340, USA; <sup>7</sup>Museum of Paleontology, University of California, 1101 Valley Life Sciences Building, Berkeley, CA 94720, USA; <sup>8</sup>Atmosphere and Ocean Research Institute, University of Tokyo, 5-1-5 Kashiwanoha, Kashiwa, Chiba 277-8564, Japan; <sup>9</sup>Utah Museum of Natural History and Department of Geology & Geophysics, University of Utah, Salt Lake City, UT 84112, USA;

<sup>10</sup>Institut für Geowissenschaften, University of Tübingen, Sigwartstraße 10, 72076 Tübingen, Germany; <sup>11</sup>Department of Marine, Earth and Atmospheric Sciences, North Carolina State University, Raleigh, NC 27695, USA; <sup>12</sup>Department of Paleontology, North Carolina Museum of Natural Sciences, Raleigh, NC 27601, USA; <sup>13</sup>Laboratório de Ecologia e Evolução, Instituto Butantan, Av. Dr. Vital Brasil, 1500, 05503-900 Sao Paulo, SP, Brazil; <sup>14</sup>Committee on Evolutionary Biology, University of Chicago, 1027 E. 57th Street, Chicago, IL 60637, USA; <sup>15</sup>Department of Geology, Field Museum of Natural History, 1400 S. Lake Shore Drive, Chicago, IL 60605, USA; <sup>16</sup>Department of Biological Sciences, Dartmouth College, Hanover, NH 03755, USA; <sup>17</sup>Department of Biology and Marine Biology, University of North Carolina at Wilmington, NC 28403, USA; <sup>18</sup>Department of Biology, University College London, Gower Street, London WC1E 6BT, UK; <sup>19</sup>Museum für Naturkunde, Leibniz-Institut für Evolutions- und Biodiversitätsforschung an der Humboldt-Universität zu Berlin, Invalidenstr. 43, 10115 Berlin, Germany; <sup>20</sup>Department of Ecology and Evolutionary Biology, University of California, Santa Cruz, A316 Earth and Marine Sciences Building, Santa Cruz, CA 95064, USA; <sup>21</sup>Department of Earth Sciences, Southern Methodist University, Dallas, TX 75275, USA; <sup>22</sup>Department of Paleoanthropology and Messel Research, Senckenberg Museum, Senckenberganlage 25, 60325 Frankfurt am Main, Germany; and <sup>23</sup>Department of Biological Sciences, University of Calgary, 2500 University Dr. NW, Calgary, AB T2N 1N4, Canada;

\*Correspondence to be sent to: Department of Biology, California State University, 9001 Stockdale Highway, Bakersfield, CA 93311-1099, USA; E-mail: jparham@csu.edu.

Received 13 September 2011; reviews returned 22 September 2011; accepted 14 November 2011

Associate Editor: Thomas Near

Our ability to correlate biological evolution with climate change, geological evolution, and other historical patterns is essential to understanding the processes that shape biodiversity. Combining data from the fossil record with molecular phylogenetics represents an exciting synthetic approach to this challenge. The first molecular divergence dating analysis (Zuckerlandl and Pauling 1962) was based on a measure of the amino acid differences in the hemoglobin molecule, with replacement rates established (calibrated) using paleontological age estimates from textbooks (e.g., Dodson 1960). Since that time, the amount of molecular sequence data has increased dramatically, affording ever-greater opportunities to apply molecular divergence approaches to fundamental problems in evolutionary biology. To capitalize on these opportunities, increasingly sophisticated divergence dating methods have been, and continue to be, developed. In contrast, comparatively, little attention has been devoted to critically assessing the paleontological and associated geological data used in divergence dating analyses. The lack of

rigorous protocols for assigning calibrations based on fossils raises serious questions about the credibility of divergence dating results (e.g., Shaul and Graur 2002; Brochu et al. 2004; Graur and Martin 2004; Hedges and Kumar 2004; Reisz and Müller 2004a, 2004b; Theodor 2004; van Tuinen and Hadly 2004a, 2004b; van Tuinen et al. 2004; Benton and Donoghue 2007; Donoghue and Benton 2007; Parham and Irmis 2008; Ksepka 2009; Benton et al. 2009; Heads 2011).

The assertion that incorrect calibrations will negatively influence divergence dating studies is not controversial. Attempts to identify incorrect calibrations through the use of a posteriori methods are available (e.g., Near and Sanderson 2004; Near et al. 2005; Rutschmann et al. 2007; Marshall 2008; Pyron 2010; Dornburg et al. 2011). We do not deny that a posteriori methods are a useful means of evaluating calibrations, but there can be no substitute for a priori assessment of the veracity of paleontological data.

Incorrect calibrations, those based upon fossils that are phylogenetically misplaced or assigned incorrect

ages, clearly introduce error into an analysis. Consequently, thorough and explicit justification of both phylogenetic and chronologic age assessments is necessary for all fossils used for calibration. Such explicit justifications will help to ensure that divergence dating studies are based on the best available data. Unfortunately, the majority of previously published calibrations lack explicit explanations and justifications of the age and phylogenetic position of the key fossils. In the absence of explicit justifications, it is difficult to distinguish between correct and incorrect calibrations, and it becomes difficult to reevaluate previous claims in light of new data. Paleontology is a dynamic science, with new data and perspectives constantly emerging as a result of new discoveries (see Kimura 2010 for a recent case where the age of the earliest known record of a clade was more than doubled). Calibrations based upon the best available evidence at a given time can become inappropriate as the discovery of new specimens, new phylogenetic analyses, and ongoing stratigraphic and geochronologic revisions refine our understanding of the fossil record.

Our primary goals in this paper are to establish the *best practices* for justifying fossils used for the temporal calibration of molecular phylogenies. Our examples derive mainly, but not exclusively, from the vertebrate fossil record. We hope that our recommendations will lead to more credible calibrations and, as a result, more reliable divergence dates throughout the tree of life. A secondary goal is to help the community (researchers, editors, and reviewers) who might be unfamiliar with fossils to understand and overcome the challenges associated with using paleontological data. In order to accomplish these goals, we present a specimen-based protocol for selecting and documenting relevant fossils and discuss future directions for evaluating and utilizing phylogenetic and temporal data from the fossil record. We likewise encourage biologists relying on non-fossil calibrations for molecular divergence estimates (e.g., ages of island or mountain range formations, continental drift, and biomarkers) to develop their own set of rigorous guidelines so that their calibrations may also be evaluated in a systematic way.

#### A SPECIMEN-BASED APPROACH TO JUSTIFYING PALEONTOLOGICAL DATA

Most studies use a Bayesian framework for estimating divergence dates with probability curves between a minimum and a maximum bound to represent calibrations (time priors) (Thorne et al. 1998; Drummond et al. 2006; Yang 2006; Yang and Rannala 2006). An appropriately constructed fossil calibration uses the oldest assigned fossil of a taxon as the basis for its minimum age and then constructs these other parameters around it (Benton and Donoghue 2007; Donoghue and Benton 2007). One key to improving the use of paleontological data is recognizing that this first step can be tied explicitly to one or a small set of museum specimens, creating a readily auditable chain of evidence. To minimize error and

maximize clarity, all calibration data should be derived explicitly from specific fossil specimens. If links between calibration data and specimens cannot be made, then there are serious questions about the validity of the proposed time priors. In this respect, the fossil specimens used for calibrations represent a standard, much in the same way that a holotype specimen (or type series) is a taxonomic standard. In both cases, these specimens provide a necessary reference point for future inquiries.

The explicit reporting of specimen data is just as crucial to the scientific integrity of a fossil calibration study as is making genetic sequences publicly available or reporting analytical methods. Thus, it is worthwhile to compile, reiterate, and expand on the caveats from previous studies that pertain to the construction and reporting of fossil calibrations (e.g., Graur and Martin 2004; Hedges and Kumar 2004; van Tuinen and Hadly 2004a, 2004b; Benton and Donoghue 2007; Donoghue and Benton 2007; Gandolfo et al. 2008; Parham and Irmis 2008; Benton et al. 2009; Ksepka 2009; Sanders et al. 2010) while providing a simple and explicit protocol (in checklist form) to address them.

The checklist can be divided into two parts, justifying phylogenetic position (Steps 1–3) and justifying age (Steps 4 and 5). In most cases, the data needed to justify calibrations are rarely found in a single publication but tend to be spread across many. In addition to being derived from many sources, such information is rarely explicitly flagged as potentially valuable for calibrations. Therefore, a rigorous and explicit approach is needed for justifying the use of paleontological and geological data for divergence dating. The following steps can be used to develop new calibrations and as a checklist for vetting and justifying previously published calibrations based on fossils. If all five steps are fulfilled, then a calibration can be considered well justified.

- (1) Museum numbers of specimen(s) that demonstrate all the relevant characters and provenance data should be listed. Referrals of additional specimens to the focal taxon should be justified.
- (2) An apomorphy-based diagnosis of the specimen(s) or an explicit, up-to-date, phylogenetic analysis that includes the specimen(s) should be referenced.
- (3) Explicit statements on the reconciliation of morphological and molecular data sets should be given.
- (4) The locality and stratigraphic level (to the best of current knowledge) from which the calibrating fossil(s) was/were collected should be specified.
- (5) Reference to a published radioisotopic age and/or numeric timescale and details of numeric age selection should be given.

*(1) Museum Numbers of Specimen(s) that Demonstrate all the Relevant Characters and Provenance Data Should be Listed. Referrals of Additional Specimens to the Focal Taxon Should be Justified*

Ideally, a fossil used for calibration would be based on a single specimen that preserves all the characters

that allow it to be unambiguously assigned to a clade. Single-specimen operational taxonomic units (OTUs) are preferable because, aside from rare mixed specimens, they are almost guaranteed to be from a single species. However, divergence dating studies that use paleontological data for calibrations usually rely on OTUs from phylogenetic analyses that are based on sets of specimens referred to a single taxon by various criteria. In some cases, the basis for a taxonomic referral can be as poor as documenting that the specimen was recovered from the same region or horizon where other specimens were previously reported. Consequently, "chimeric taxa" are a recurring problem in paleontology (Meyer-Berthaud et al. 1992; Padian 2000; Parham 2005).

Because single-specimen fossil OTUs are not always possible, it is necessary to revisit the association and referral of specimens. It may be possible to refer specimens from different localities to a single taxon if there are overlapping diagnostic elements or even through phylogenetic analysis (Gandolfo et al. 1997; Yates 2003; Pol 2004; Boyd et al. 2009; Makovicky 2010). In cases where previously recognized OTUs cannot be objectively assembled, it is necessary to restrict the calibration to a subset of specimens (e.g., Danilov and Parham 2005) or eliminate the OTU from the calibration.

(2) *An Apomorphy-Based Diagnosis of the Specimen(s) or an Explicit, Up-to-Date, Phylogenetic Analysis that Includes the Specimen(s) Should be Referenced*

Incorrect phylogenetic placement of fossil calibrations can introduce large errors into divergence date estimates (Lee 1999; Brochu 2000; van Tuinen and Hedges 2004; Phillips et al. 2010). Fossil-calibrated dating studies rely on the paleontological literature for calibration placement but many of the putative oldest representatives of a lineage have never been included in a formal phylogenetic analysis. Gandolfo et al. (2008) identified several instances in which incorrect identifications and taxonomic assignments led to inappropriate fossil calibrations. This is a particular problem for clades that are understudied, represented by a sparse fossil record, and/or routinely overidentified (i.e., placed in a lower level taxon than the data can demonstrate) in the literature (e.g., Cenozoic amphibians and reptiles, Bever 2005; Bell et al. 2010; Sanders et al. 2010). The fact that different authorities may use the same taxon names to refer to different biological entities confounds the problem and may be particularly prevalent when addressing the fossil record of extant lineages. This is why we recommend the use of an apomorphy-based approach to identifying and phylogenetically placing specimens that are relevant for paleontological calibrations. These guidelines can also be applied to trace fossils (e.g., tetrapod footprints) in the case that their identifications are well supported and they show strong evidence for the antiquity of a lineage based on explicit apomorphies (Carrano and Wilson 2001; Li et al. 2008; Brusatte et al. 2011).

Because fossils are incompletely preserved, many extinct species have controversial phylogenetic assignments. Given the analytical burden placed on paleontological data, it is imperative that up-to-date evidence supporting the taxonomic assignment of relevant OTUs be explicitly provided. A recurring pitfall is the understandable enthusiasm of paleontologists to report the oldest geological record of a clade, frequently based upon fragmentary evidence. This can be problematic on two counts. First, fragmentary remains often provide insufficient anatomical evidence to discriminate whether shared characters are products of convergence or common descent. Second, with fragmentary specimens, it can be difficult to distinguish whether the critical fossil belongs to the stem or the crown of the clade that it is being used to calibrate. By definition, the earliest stem members will possess the smallest subset of the diagnostic characters of the crown, and so assigning fragmentary fossils to either the crown or the stem of a clade requires detailed knowledge of character evolution that is not always available. Conversely, fossil specimens of crown clades may not be recognized as such because they lack one or more of the diagnostic characters as a consequence of taphonomy or secondary loss (Hennig 1981; Donoghue and Purnell 2009; Sansom et al. 2010). This issue is especially true for crown clades that are united on the basis of strong molecular evidence but for which limited morphological support is known (e.g., Afrotheria or Boreoeutheria among placental mammals; see Asher et al. 2009). This problem is also likely to occur in poorly represented basal taxa of lineages that underwent substantial morphological evolution long after their origin. In those cases, the taxa that might be of greatest interest in constraining the time of divergence from the nearest living relative may be difficult to identify.

These complexities underscore the need to carefully justify the phylogenetic placement of any specimen used for calibrations. It is not enough to cite a paper that merely mentions the taxon or specimen(s) because the strictness of criteria used in the reported phylogenetic placement of fossils varies among authors (especially when it comes to fragmentary, undescribed, and/or unanalyzed specimens). The phylogenetic position of a fossil taxon can be unstable even when relatively complete specimens are available. Therefore, a thorough knowledge of the paleontological literature is required to make sure that the most recent and/or valid study is being cited. After all, claims about the oldest member(s) of a lineage may change as new data and analyses are published. A good example of this phenomenon is the case of the putative oldest placental mammals, the zhelestids (Archibald 1996). Zhelestids are Cretaceous mammal fossils that were initially hypothesized to be nested deeply within the crown clade of modern orders of placental mammals (Eutheria), the rest of which do not appear until the Cenozoic. In more recent analyses, zhelestids have been steadily moving down the tree (Archibald et al. 2001) and now are hypothesized to be on the stem of Eutheria (Luo and Wible 2005).

where they offer no evidence about a minimum date for crown Eutheria. This stemward change in phylogenetic position arose from increasing clarity about the relationships of mammalian orders rather than from correcting errors in earlier morphological study or discovery of better specimens. All three phenomena—new specimens, new interpretations of existing specimens, and phylogenetic revisions—can lead to major revisions in the phylogenetic placement of fossils.

Existing databases such as the Paleobiology Database ([www.pdb.org](http://www.pdb.org)) may contain detailed taxonomic, geographic, geologic, and stratigraphic information associated with fossil specimens, but relevant phylogenetic information justifying the taxonomic placement of these individual specimens is usually lacking. Moreover, rates of polyphyly in mammalian and molluscan morphotaxa were recently documented to be as high as 19% (Jablonski and Finarelli 2009), illustrating the risks of uncritically accepting taxonomic allocations represented in large scale databases (as well as the need to construct databases following our specimen-based protocol). Whereas existing databases are extremely useful for identifying the potential oldest specimens assignable to a given clade, explicit, apomorphy-based information is still necessary to justify the phylogenetic position of a specimen for calibration.

### (3) *Explicit Statements on the Reconciliation of Morphological and Molecular Data Sets Should be Given*

In the best cases, fossil specimens possess unambiguous apomorphies that allow them to be assigned to a single extant lineage with confidence. In these instances, assigning fossils to nodes is straightforward. Regardless of the tree topology, the fossil will track the extant lineage and serve as a candidate calibration for all nodes in which it is nested (Fig. 1, Example 1; see, e.g., Smith 2010). In other cases, the position of a fossil is supported by ambiguous apomorphies (i.e., homoplastic characters) and is therefore highly dependent on the topology of a specific analysis. In addition to the changing position of a taxon given different morphological analyses (see 2 above), any discrepancy between topologies of morphological and molecular phylogenetic analyses is a potential pitfall that has been underemphasized (Benton et al. 2009; Lyson et al. 2010; Wiens et al. 2010). Different topologies from morphological and molecular analyses can affect fossil calibrations in several ways. In some cases, the placement of a fossil may become ambiguous (Fig. 1, Example 2) leading to uncertainty about which node(s) it can be used to calibrate. If morphological data show high levels of homoplasy, the polarization of morphological characters also may be sensitive to shifting topologies (Fig. 1, Example 3). Different topologies imply different hypotheses of character evolution, potentially impacting the placement of fossils in a tree (Asher et al. 2005; Cadena et al. 2012). Unless morphological and molecular trees are in agreement, the phylogenetic position of a fossil cannot be automatically transferred to a molecular-based topology. Therefore,

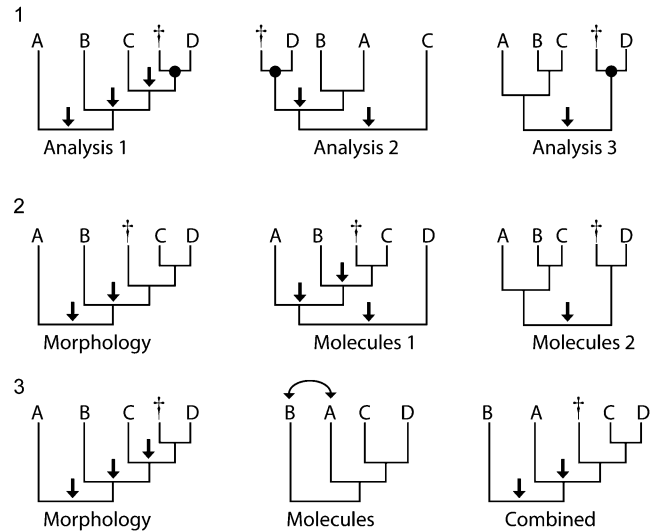


FIGURE 1. Example 1: A fossil (†) with unambiguous synapomorphies can be assigned to a specific lineage (D) with confidence. Regardless of the topology, the fossil will track the extant lineage and serve as a candidate calibration for all nodes above which it is nested. Example 2: Competing phylogenetic hypotheses from different data sets can change the position of fossil calibrations. In the morphological analysis, a fossil is found to be closely related to lineages C and D. Two arrows show the nodes that the fossil could calibrate. A molecular study with a different topology separates lineages C and D, making the placement of the fossil ambiguous. If the fossil is closely related to C, then it could calibrate three nodes. If the fossil is closely related to D, then it is a candidate calibration for just one node. Example 3: Changes to outgroup topology can change the polarization of morphological characters and placement of fossils. In the morphological analysis, a fossil (†) is placed in the C + D clade, sister to D. A molecular analysis changes the relationships of the outgroups (A and B). In a combined analysis, the morphological characters for the C + D clade are polarized in a different way and so using the fossil to calibrate clade C + D would be inappropriate.

merely citing a morphological phylogeny that places a fossil taxon (i.e., 2) is insufficient justification for a fossil calibration.

Some problems of incongruent morphological and molecular topologies can be mitigated by either “total evidence” (sensu Kluge 1989) analyses (e.g., Brochu 1997; Hermesen and Hendricks 2008; O’Leary and Gatesy 2008; Ksepka 2009) or through the use of a “molecular scaffold” in resolving morphological character distribution and, therefore, the phylogenetic position of species known only from fossils (e.g., Springer et al. 2001; Danilov and Parham 2006). Both those approaches incorporate, and therefore explicitly attempt to reconcile, the morphological data from fossil specimens with the topologies of molecular analyses though they make different assumptions about the accuracy of molecular versus morphological data. These methods do not solve every problem, so a conservative approach to calibrating analyses based on poorly supported or controversial placements is warranted. In some cases, it may be conceivable that the morphological and molecular data sets are so incongruent that neither a total evidence nor a molecular scaffold approach are sufficient for reconcil-

ing the position of an extinct taxon. For example, given current uncertainty concerning the phylogenetic position of fossil turtles among amniotes, any use of the oldest fossil turtle specimens to calibrate amniote branching events has a two-thirds probability of introducing error into the analysis (see Lyson et al. 2010, 2012). We recommend against using such controversial OTUs to calibrate divergence dating analyses.

(4) *The Locality and Stratigraphic Level (to the Best of Current Knowledge) from which the Calibrating Fossil(s) Was/Were Collected Should be Specified*

Unless they are subjected to direct radioisotopic analysis (which is rarely possible), the provenance of specimens used for calibrations must be documented. The accuracy with which a particular fossil can be located to a specific level in a stratigraphic column varies but depends largely on how detailed the locality data are.

It might be constrained to a discrete bed in a measured stratigraphic section, or a geologic formation or group, or a depositional basin. Many specimens, especially those collected more than 50 years ago or those derived from the commercial trade, lack detailed stratigraphic and geographic occurrence data and so have limited value for calibration purposes.

Almost any fossil found in situ can be assigned to its source rock unit and often to a particular stratigraphic level within that unit. In the best cases, calibration data will be based upon fossils with precise locality information and stratigraphic context that can be assigned to a particular meter level in a chronostratigraphically well-studied section (Fig. 2). The accuracy with which a fossil can be placed within a stratigraphic framework will have a major impact on estimates of its relative (stratigraphic) and numeric (absolute) age, particularly in light of improvements in correlation, revisions of stratigraphy, and refinements in geochronology.

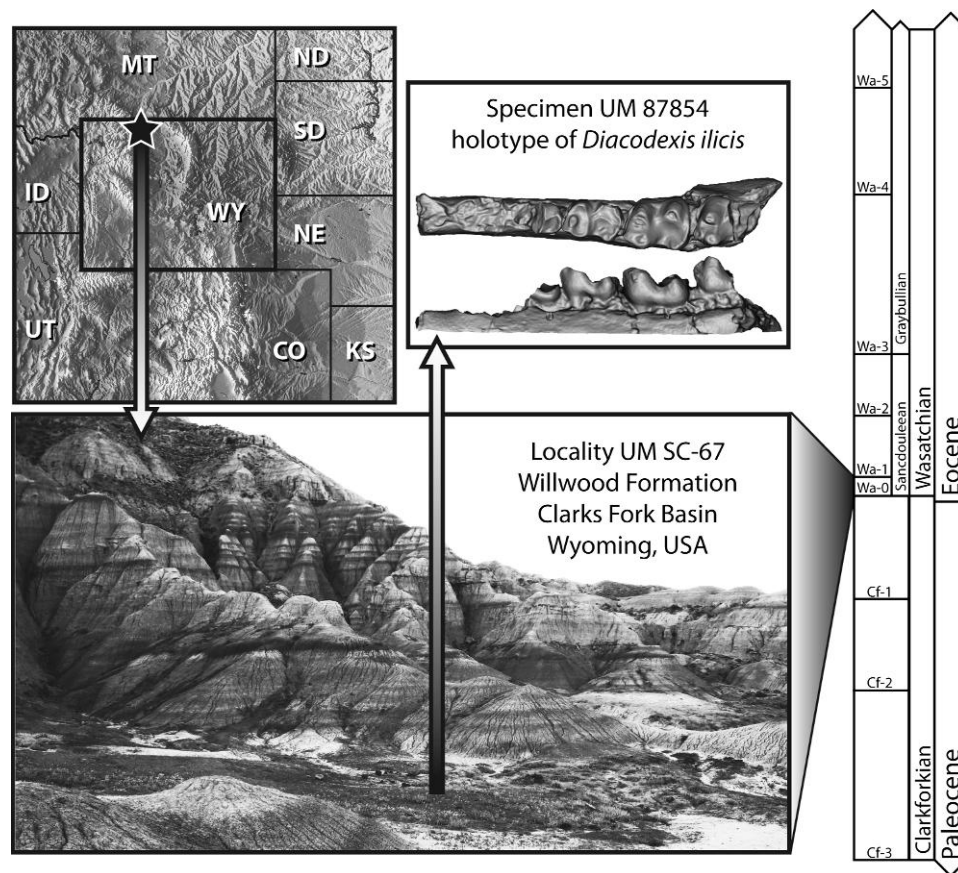


FIGURE 2. Every fossil taxon has geographic and geological contexts that provide a basis for determining its age. The example given here is for *Diacodexis ilicis*. Depending on the phylogeny used, *D. ilicis* can be a useful minimum calibration for artiodactyl mammals. Six specimens of *D. ilicis* are known (Gingerich 1989) and the holotype, UM (University of Michigan) 87854, is among the oldest well-dated specimens. UM 87854 is from the Clarks Fork depositional basin in northern Wyoming. Within the Clarks Fork Basin, it is from the Willwood Formation. Within the Willwood Formation, it is from Locality UM SC-67. Locality UM SC-67 is part of a well-studied stratigraphic section for the Early Eocene. Within the Early Eocene, Locality UM SC-67 can be placed in the Wasatchian Land-Mammal Age. Within the Wasatchian, Locality UM SC-67 can be assigned to the biozone Wa-0 and occurs within a global negative carbon isotopic excursion. Wa-0 spans the latter part of this carbon isotope excursion and is inferred to represent ~95 ky in the stratigraphic section, where UM 87854 occurs (Abdul Aziz et al. 2008); the entire global carbon isotope excursion is currently dated to 55.65–55.93 on the basis of radioisotopic ages and orbital tuning methods based on the earth's precessional cycles (Westerhold et al. 2009), giving specimen UM 87854 a minimum age of 55.65 Ma.

Geologic units (e.g., groups, formations, and members) are the key lithostratigraphic units used by field geologists to correlate and divide the sedimentary rock sequence in a geographic region; they generally have formal names (e.g., Willwood Formation, Fig. 2) and explicitly defined bases and tops.

Geologic units are never of uniform scale, whether in terms of thickness or geographic extent, because they merely represent mappable units of distinctive rock types. Most importantly, rock units do not represent equal units of time—some rock units may be deposited geologically instantaneously, whereas others might represent millions of years with different portions of the total time range represented at particular outcrops. Nor do the boundaries between lithologic units necessarily coincide with geochronologic divisions (i.e., units of geologic time). But the assignment of a fossil to a named geologic rock unit provides a fixed standard of the relative age of the fossil that can then be used to establish a numeric age as outlined below (5).

Stratigraphy is not a static field. Episodically, stratigraphic nomenclature is revised or entirely redefined with the establishment of new “type sections,” and new lithostratigraphic or biostratigraphic schemes proposed. New descriptions and correlations can lead to refined interpretations of the geologic unit present at a particular geographic locality (e.g., Martz and Parker 2010). The dynamic nature of stratigraphy highlights the importance of detailed geographic locality information for fossil specimens in order to determine the impact of revised stratigraphic interpretations, correlations, and geochronologies upon divergence dating calibrations and, ultimately, divergence time estimates.

*(5) Reference to a Published Radioisotopic Age and/or  
Numeric Timescale and Details of Numeric Age Selection  
Should be Given*

Divergence dating analyses require numeric ages, but paleontologists do not routinely use or report numeric ages. The numeric age of a fossil is generally outside the purview of most paleontologists' research interests for two reasons. First, the geochronologic data required for numeric dates can be difficult to establish for a particular rock unit and geographic locality. Second, though geochronologies evolve, named rock units change much less frequently and so provide a more stable albeit relative comparative framework for reporting fossil occurrences. The translation of fossil occurrences to numeric ages frequently involves a daisy chain of correlations through different geographic localities on the basis of overlapping geological and paleontological evidence (e.g., van Tuinen and Hadly 2004a; Benton et al. 2009; Smith 2011). However, for the vast majority of calibrations, this translation is not explained, meaning the actual numbers used in calculations are not adequately justified.

The numeric age of a fossil is not necessarily stable, particularly if it is established through correlation rather than through direct dating at the section in which the

fossil was found. Any numeric age for a fossil specimen is merely the best current estimate and can be refined through time. For example, radioisotopic dating methods have improved dating precision by roughly an order of magnitude in the past 20 years as a result of new methods, recalibration of standards, and cross-testing among existing methods (e.g., Mundil et al. 2004; Erwin 2006; Renne et al. 2010).  $^{40}\text{Ar}/^{39}\text{Ar}$  and U-Pb ages differ systematically by  $\sim 1\%$ , something that requires correction prior to comparison (e.g., Renne et al. 2010). Because of this ongoing refinement, it is important to fully explain the basis upon which the numeric age is established. If the chain of inference is explicit, the consequences of revisions will be easily identified. At its most basic level, our recommendation for justifying the numeric age of a calibration point is that the translation of relative intervals from paleontological studies should reference geochronological literature or published timescales that include numeric ages (e.g., Hess and Lippolt 1986; Menning et al. 2000; Gradstein et al. 2004; Ogg 2010; Walker and Geissman 2009). Of course, even compiled geologic timescales rely on some interpolation, are themselves constantly undergoing revision, and can become obsolete. Referencing these timescales makes it easier for later workers to revise reported ages.

A second part of this step in the protocol involves the logistical interpretation of the numeric age from the geological timescale. For a minimum age constraint, the youngest age interpretation of the fossil should be used (i.e., the uppermost limit of the relevant time interval) rather than the common practice of adopting a midpoint in the possible range. Because a fossil necessarily postdates the origination of the lineage to which it is assigned, choosing the youngest possible age from an interval will necessarily bias the minimum further from the true age of origination. However, it is important to recognize that the minimum age is only one end point of a constraint and is meant to partially bracket, not approximate on its own, the age of origination. Therefore, the minimum age should accommodate the youngest possible age of the fossil including the error associated with the geochronologic age (van Tuinen et al. 2004; Donoghue and Benton 2007; Benton and Donoghue 2007; Benton et al. 2009).

This youngest possible age should be applied as a hard minimum. The logic behind assigning hard minima based on the youngest possible age of the oldest-known fossil has been discussed extensively (e.g., van Tuinen et al. 2004; Benton and Donoghue 2007; Donoghue and Benton 2007). Some authors may still choose to use soft minima in cases of hypothesized anagenesis or geologic uncertainty, but such instances require careful justification. The arbitrary assignment of a minimum age that postdates the stated youngest estimates for a fossil should be avoided. The justification for arbitrarily expanding the interval might appeal to a conservative bias, but when paleontological data are properly established and justified that practice serves only to introduce unnecessary error into the analysis.

In some cases, either because of poor correlations or poorly documented provenance, the age of a fossil may not be well constrained beyond a very broad stratigraphic interval. But in many cases, it is possible to determine much more precise and accurate dates than are given by a stratigraphic interval. Those data may not be available in the publications describing the fossil specimens used for calibrations, and so it is usually necessary to compile evidence from multiple studies. Anatomically trained fossil systematists may not be able to retrieve those data any more easily than molecular systematists, but by listing the specimen numbers, rock units, and ages in a standardized way, others may check the claim, thus facilitating the refinement of numeric dates over time.

#### *Useful Discussions*

In addition to the five steps of the specimen-based protocol, we recommend that authors include some discussion about the history of each node that addresses rejected or obsolete calibrations. Such detailed discussions of calibrations already exist in some papers (e.g., Benton and Donoghue 2007; Hurley et al. 2007; Benton et al. 2009). These summary discussions make it easier for others to assess the justification by highlighting the relevant literature and argumentation. We should expect that through discovery, description, critique, and phylogenetic/stratigraphic analysis that even the best-justified calibrations would eventually be refined or even dramatically changed. In order to facilitate the evolution of justifications, we recommend that explanatory discussions (or citations of such discussions) should become a standard part of calibration reporting.

#### *Other Parameters*

The justification of the phylogenetic position and age of a fossil is an important first step to calibrating a node in a divergence dating analysis. In addition to determining what nodes can even be assigned time priors (some may not have useable fossils), this step provides the most tangible data from the fossil record: the hard minimum bound of a calibration interval. The maximum bound and the distribution of probabilities within the minimum–maximum interval are also ostensibly based on the fossil record, but in a much more complex way, because they describe probability of origination before the oldest known fossil. The idiosyncratic nature of these other parameters precludes us from developing a standard protocol for them.

Ideally, the maximum constraint is established as older than all the oldest possible records, extending back to encompass a time when the ecologic, biogeographic, geologic, and taphonomic conditions for the existence of the lineage are met, but no records are known. For the maximum bound, an intuitive approach that takes into account preservation potential and phylogenetic bracketing has been proposed (e.g., Reisz and Müller

2004a; Müller and Reisz 2005; Benton and Donoghue 2007; Donoghue and Benton 2007; Benton et al. 2009). This approach is borrowed and developed from the fossil recovery potential function established by Marshall (1997). Researchers who use this intuitive approach should provide detailed arguments justifying their decisions so that others can evaluate them and, following the arguments of Benton and Donoghue (2007) and Ho and Phillips (2009), the maximum bounds should be soft and liberal.

Most studies use a Bayesian framework for estimating divergence dates with probability curves between minimum and maximum bounds. In theory, such complex, parameter-rich priors may be better models of the fossil record, but there is presently no practical way to estimate curve parameters (Ho and Phillips 2009). Lee and Skinner (2011) note, “current practice often consists of little more than educated guesswork.” A review of recent studies shows that these parameters are usually not justified (Warnock et al. 2012). The implications of these choices are only recently being explored (Inoue et al. 2010; Clarke et al. 2011; Lee and Skinner 2011; Warnock et al. 2012). But the fact that a widely applied methodology is subjected to such ambiguous assumptions that have a major impact on results (Clarke et al. 2011, Warnock et al. 2012) is a major limitation of molecular divergence dating studies. The development of objective methods for estimating maximum bounds and probability curves should be a priority (see Future Directions section).

#### EXAMPLES OF FOSSIL CALIBRATIONS

In order to demonstrate the application of our specimen-based protocol, we apply it to two widely used calibrations in the vertebrate scion of the tree of life: the crocodile–bird node (Archosauria, below) and the human–chimpanzee node (Hominini, online Appendices 1, 2 (available from <http://www.sysbio.oxfordjournals.org/>)). A survey of the literature shows variation among the interpretations of the paleontological data for these nodes (Fig. 3). The application of the specimen-based protocol to these “classic” nodes results in new hard minima. We also provide examples of our recommended node calibration discussions as well as maximum bounds, the latter following the approach of Benton and Donoghue (2007).

*Example from Archosaurian Reptiles (Crocodile–Bird Node):  
247.2 Ma Hard Minimum, 256 Ma Soft Maximum)*

(1) *Museum numbers of specimen(s) that demonstrate all the relevant characters and provenance data should be listed. Referrals of additional specimens to the focal taxon should be justified.*—The Institute of Vertebrate Paleontology and Paleoanthropology (IVPP) V 6026, holotype of *Xilousuchus sapingensis* (Wu 1981).

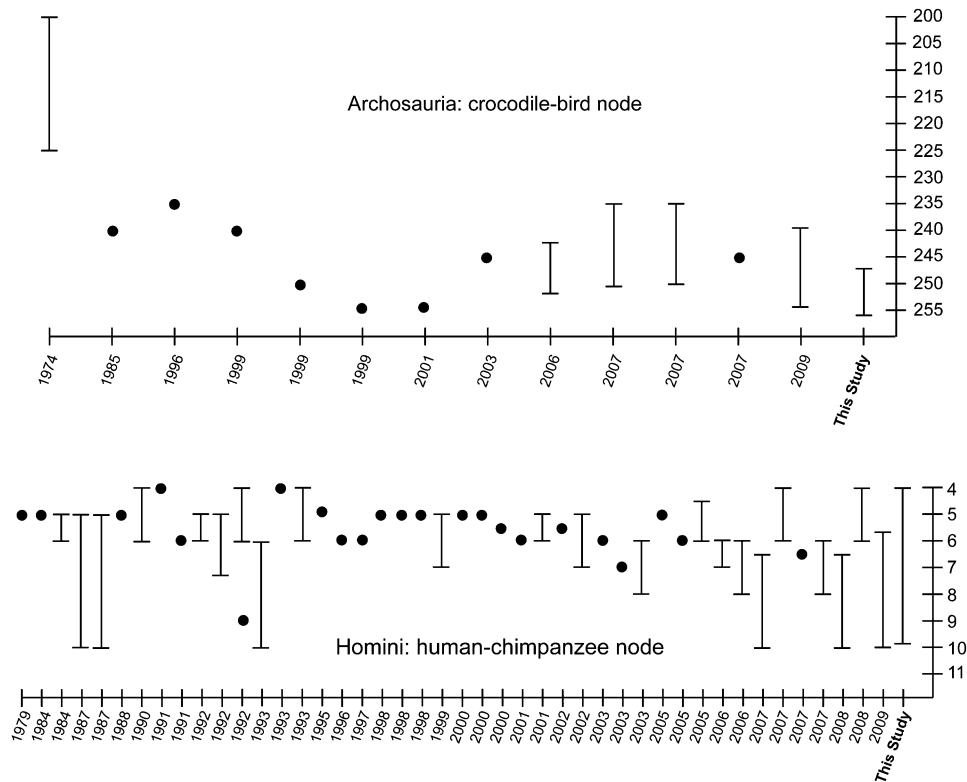


FIGURE 3. Examples of variation among constraint ages for two commonly calibrated nodes. Dark circles show point calibrations, lines show constraint intervals. Top: Archosauria, crocodile–bird node. Bottom: Homini, human–chimpanzee node. The data for this figure can be found in online Appendix 2.

(2) *An apomorphy-based diagnosis of the specimen(s) or an explicit, up-to-date, phylogenetic analysis that includes the specimen(s) should be referenced.*—Nesbitt et al. 2011 conclusively demonstrates that IVPP V 6026 belongs along the stem of Crocodylia (in the clade Pseudosuchia). Specifically, IVPP V 6026 preserves a number of synapomorphies placing it in the basal clade Podosauroida, which also includes *Arizonasaurus babbitti* (Nesbitt et al. 2011), a previously proposed calibration point for Archosauria. As discussed by Nesbitt et al. 2011, IVPP V 6026 can be placed in Archosauria because it possesses the following synapomorphies: palatal processes of the maxilla meet at the midline, external foramen for the abducens nerve is contained wholly within the prootic, and the dorsolateral margin of the posterior process of the maxilla preserves an antorbital fossa. It is placed within Podosauroida because it possesses: a posterodorsal process of the premaxilla that is restricted to the ventral border of the external naris, the anterodorsal margin of the maxilla borders the external naris, a concave anterodorsal margin is present at the base of the dorsal process of the maxilla, foramina for entrance of cerebral branches of internal carotid artery into the braincase are positioned on the ventral surface, and it lacks the distal expansion of neural spines of the dorsal vertebrae (Nesbitt et al. 2011).

(3) *Explicit statements on the reconciliation of morphological and molecular data sets should be given.*—The morphological hypothesis of Nesbitt et al. (2011) is concordant with molecular hypotheses of higher level tetrapod relationships that support a monophyletic Archosauria (e.g., Zardoya and Meyer 1998; Hedges and Poling 1999; Kumazawa and Nishida 1999; Rest et al. 2003; Iwabe et al. 2005; Hugall et al. 2007; Alfaro et al. 2009; Becker et al. 2011; Shen et al. 2011; Lyson et al. 2012). Recently, several molecular data sets have recovered support for a novel turtle–crocodilian clade (Hedges and Poling 1999; Mannen and Li 1999; Cao et al. 2000; Shedlock et al. 2007) or a novel turtle–bird clade (Cotton and Page 2002). However, support for these topologies over an alternative where turtles are the sister taxon to a monophyletic Archosauria is often weak (Cao et al. 2000; Iwabe et al., 2005; Katsu et al. 2009). The majority of recent molecular analyses support a monophyletic Archosauria (Iwabe et al. 2005; Hugall et al. 2007; Alfaro et al. 2009; Katsu et al. 2009; Lyson et al. 2012), and placement of turtles as archosauriforms or archosaurs does not affect the oldest potential calibration point or the phylogenetic placement of IVPP V 6026.

(4) *The locality and stratigraphic level (to the best of current knowledge) from which the calibrating fossil(s) was/were*



collected should be specified.—Heshanggou Formation, Hazhen Commune, Fugu County, northeast Shaanxi Province of China (Wu 1981).

(5) Reference to a published radioisotopic age and/or numeric time scale and details of numeric age selection should be given.—Although the Heshanggou Formation preserves vertebrate fossils that are thought to be correlative to other Early Triassic assemblages in Pangaea (Shu and Norris 1988; Rubidge 2005; Nesbitt et al. 2011), what is most relevant is that the formation preserves an extensive palynofloral (pollen and spore) assemblage that is unambiguously Early Triassic in age (Shu and Norris 1988) and easily correlative to other Early Triassic palynofloras worldwide (cf. Lindström and McLaughlin 2007; Kürschner and Herengreen 2010). Furthermore, the Heshanggou Formation also preserves the plant macrofossil taxon *Pleuromeia sternbergii* (Shu and Norris 1988), a classic Early Triassic disaster taxon found in abundance throughout Pangaea (Wang 1996; Looy et al. 2001; Grauvogel-Stamm and Ash 2005; Krassilov and Karasev 2009). The palynofloral data specifically suggest that these strata were deposited during the Olenekian Stage (late Early Triassic) (Shu and Norris 1988). The entire Early Triassic is well sampled with high-precision U-Pb radioisotopic ages, so the duration of the Olenekian is well constrained to 251.3–247.2 Ma (Mundil et al. 2010).

*Discussion.*—The bird–crocodile split (crown groups Aves–Crocodylia and total groups Ornithodira–Pseudosuchia) is one of the fundamental calibrations for tetrapod vertebrate studies (e.g., Hugall et al. 2007; Alfaro et al. 2009) because it often serves as an external calibration for both squamate and avian molecular analyses (e.g., Paton et al. 2002; Pereira and Baker 2006; Kumazawa 2007; Okajima and Kumazawa 2010) and is relevant to well-used model organisms in developmental biology (Benton and Donoghue 2007). Early analyses used a secondary calibration for this divergence, which has been rightly criticized (Graur and Martin 2004; Müller and Reisz 2005). Fossils on the lineage to birds (Ornithodira) have not generally been used for calibration because, until recently, they postdated by 10–15 myr the earliest putative fossils from the crocodylian total group (Pseudosuchia) (Müller and Reisz 2005; Benton and Donoghue 2007).

Müller and Reisz (2005) proposed an age of 243–251 Ma for this divergence, based on the presence of the pseudosuchian *Ar. babbitti* during the lower Anisian stage of the Middle Triassic (Nesbitt 2003, 2005), which is 245–247 Ma using recent high-precision U-Pb radioisotopic age data (Mundil et al. 2010). *Ar. babbitti* is phylogenetically well constrained as a member of the Pseudosuchia (e.g., Nesbitt 2003; Nesbitt and Norell 2006; Nesbitt 2007; Weinbaum and Hungerbühler 2007; Nesbitt et al. 2011). However, its geologic age is less secure. *Ar. babbitti* is from the Holbrook Member of the Moenkopi Formation in Arizona, U.S.A.; this has been dated to the Anisian using long-distance vertebrate

biostratigraphic correlations (Morales 1987; Lucas and Schoch 2002), and this is consistent with very limited magnetostratigraphic (Steiner et al. 1993) and radioisotopic age data (Dickinson and Gehrels 2009). Unfortunately, Triassic vertebrate biostratigraphy is in constant flux (e.g., Rayfield et al. 2005, 2009; Irmis et al. 2010), so the age assignment of *Ar. babbitti* is not particularly robust. Nonetheless, accepting an Anisian age for this taxon, it would give a minimum age of divergence for the bird–crocodile split of 242–247 Ma (Mundil et al. 2010).

Some studies have followed this calibration (e.g., Hugall et al. 2007), whereas Benton and Donoghue (2007) proposed an age of 235–250.4 Ma for this divergence, based on the presence of the archosauriform *Vjushkovisaurus berdjanensis* from the ?Anisian of Russia. *V. berdjanensis* is a poor choice for calibrating the bird–crocodile split because it has never been included in a phylogenetic analysis, and there is morphological character evidence suggesting that it is a basal archosauriform outside of crown Archosauria (i.e., phylogenetically predates the bird–crocodile divergence) (Gower and Sennikov 2000).

Nesbitt et al. (2010) recently described *Asilisaurus kongwe* from the Anisian (Middle Triassic) of Tanzania, a basal dinosauroform that is the oldest representative of the stem lineage of birds. Although phylogenetically well constrained, this fossil is no older than *Ar. babbitti*. It also suffers similar problems in geologic dating; the age of *As. kongwe* is only constrained by long-distance vertebrate biostratigraphy (see Nesbitt et al. 2010 supplementary information). Brusatte et al. (2011) recently described putative basal dinosauroform footprints from the Early Triassic, but these records face the same identification problems as other ichnofossils (see above) and are no older than IVPP V 6026.

IVPP V 6026, from the Early Triassic Heshanggou Formation of China, was first described as a basal archosauriform, outside of crown Archosauria. Gower and Sennikov (1996a, 1996b, 1997) agreed with this basal phylogenetic position; however, reevaluation of the specimen by Nesbitt et al. (2011) conclusively demonstrates that it belongs to the Pseudosuchia. This absolute age of IVPP V 6026 therefore provides a minimum constraint for the bird–crocodile split.

*Soft maximum age constraint.*—Justification for the maximum age constraint for Archosauria is difficult because recent fossil discoveries have steadily pushed back the age of divergence for this node. Current fossil evidence suggests that Archosauria diverged during the earliest Triassic based on the fact that a number of lineages must have diverged prior to the Olenekian (Nesbitt et al. 2011), but this does not eliminate the possibility that older representatives of Archosauria will be discovered. Non-archosaur archosauriforms appear to have achieved a global distribution by the end of the Early Triassic, with taxa present in Eastern Europe, Asia, South America, South Africa, and Antarctica

(Smith et al. 2011). Despite this widespread distribution, which includes relatively well-sampled assemblages (e.g., the South African *Lystrosaurus* Assemblage Zone), *X. sapingensis* remains the only Early Triassic archosauriform with well-established archosaur affinities. We suggest that the age of the oldest basal archosauriform (part of the archosaur stem lineage, but basal to the avian-crocodylian divergence) *Archosaurus rossicus* provides a conservative estimate for a soft maximum because it is the oldest archosauriform fossil known, and pre-dates by several million years all putative crown archosaur fossils. *A. rossicus* is clearly identifiable as a basal archosauriform (Gower and Sennikov 2000) and is dated to the Changhsingian (latest Permian) by palynofloral biostratigraphy (Krassilov and Karasev 2009). The Changhsingian is dated by high-precision U-Pb ages to 256–252.3 Ma. Given that we do not know exactly what part of the Changhsingian *A. rossicus* is from, we suggest that a conservative soft maximum for Archosauria would be 256 Ma.

#### *Using the Checklist to Test Calibrations*

Previous studies identified inappropriate calibrations that have introduced error into divergence dating analyses (e.g., Graur and Martin 2004; Gandolfo et al. 2008; Ksepka 2009; Sanders et al. 2010). In order to show how the application of the specimen-based protocol can identify inappropriate calibrations, we include two examples (from boid snakes and charadriiform birds; online Appendix 3). In the boid snake example, the published minimum age (55 Ma) cannot be substantiated with specimen-based evidence so we recommend a much younger minimum age (16.0 Ma). Similarly, in the charadriiform bird example, the published minimum age (28.4 Ma) cannot be substantiated with specimen evidence. In fact, we cannot identify another specimen that will satisfy all the steps of the protocol for that node and so recommend that future workers do not calibrate it.

It is not certain that errors like these would be identified by cross-validation studies, but even then if they were it would not be clear why the fossil data were incongruent. Regardless, vetting calibrations beforehand is clearly preferable to including poorly substantiated data into any analysis. The checklist is an important first step to identifying other incorrect calibrations and establishing more reliable time priors.

#### FUTURE DIRECTIONS

Better-justified calibrations are more likely to be free of error, which will make molecular divergence dates more accurate and therefore provide greater rigor in testing hypotheses. A specimen-based protocol will focus attention on discrepancies between the fossil record and published calibration points, making it easier for later researchers to identify and correct errors and refine calibrations as new data come to light. Standardizing the reporting of data in publications (e.g., our checklist

is a crucial first step. In addition to providing this tool, we identify some unresolved issues such as the need for more objective methods for selecting some parameters of time priors (the maximum constraint and probability curves) and the difficulty associated with compiling information from traditionally separate disciplines. In both cases, solutions can be found in bioinformatic approaches.

#### *Objective Calibration Parameters*

Following our checklist protocol will help workers identify the oldest certain fossil of a lineage that can anchor a time prior with an objective hard minimum age. But diagnostic fossils always postdate the origination time of the lineage they represent (e.g., Marshall 1990; Norell 1992; Benton and Ayala 2003; Benton and Donoghue 2007). The probability of origination before the oldest certain fossil is what the other Bayesian calibration parameters attempt to estimate. Therefore, objectively establishing these parameters requires quantitative estimates of factors that would contribute to the nonpreservation of a lineage. Inoue et al. (2010, p. 74) highlight “the need for probabilistic modeling of fossil depositions, preservations, and sampling to provide statistical summaries of information in the fossil record. . .”.

The amount of effort required to create rigorous paleontological databases suitable for calculating priors is intimidating. To date, few studies have integrated databases of fossil occurrences with measurements of rock record bias at small taxonomic or geographic scales (Holland 2003; Benton et al. 2004; Uhen and Pyenson 2007; Marx 2009) and never for the purpose of developing time priors. This approach was extended to calculate Bayesian “confidence intervals” (sensu Strauss and Sadler 1989; Hedman 2010; see, e.g., Friedman and Brazeau 2010) on origination dates that could be adapted as Bayesian priors for divergence dating studies, but we do not know of any studies that have done this yet. Another method permits estimation of origination time posteriors based on the temporal distribution of crown and stem members, which were then used as time priors for divergence dating (Wilkinson et al. 2011). The development and comparison of these and other methods to objectively estimate time prior parameters should be a priority for the divergence dating effort. Even then, the utility of any method will be limited by the accessibility of relevant data. Obtaining genetic sequences is not the limiting factor, but the synthesis will require substantially more input from paleontologists in order to collate, vet, and organize the data from the fossil record.

#### *Rapid Access to Information*

A common thread among the problems we address is the difficulty associated with compiling information from traditionally separate disciplines. For example, even the first step of the specimen-based protocol,

listing specimen numbers and justifying referrals, is a daunting challenge for a molecular biologist wanting a vetted time-prior for their study. Such challenges can be met through collaboration or by citing a study that has already applied the protocol. Both solutions are not only effective but also introduce logistical difficulties and delays. Ideally, these data could be collated ahead of time or at least made more accessible. The next step is to create Internet resources that facilitate the storage, retrieval, and explication of paleontological calibration data similar to the way that molecular sequence data are archived on GenBank. The Internet is an ideal platform for this endeavor as exemplified by the Date-a-Clade Website ([www.fossilrecord.net/dateaclade/index.html](http://www.fossilrecord.net/dateaclade/index.html)) based on Benton and Donoghue (2007). We can imagine a broader, dynamic, community-contributed instar of that resource (Ksepka et al. 2011) that is linked to other online clearinghouses of biological data such as the Paleobiology Database ([www.paleodb.org](http://www.paleodb.org)), Morphobank ([www.morphobank.org](http://www.morphobank.org)), TimeTree Database ([timetree.org](http://timetree.org)), and the Encyclopedia of Life ([www.eol.org](http://www.eol.org)).

We encourage paleontologists and geochronologists to take a more proactive role by providing data that match the steps outlined above, engaging in collaborative studies, and contributing to efforts to provide these data to their neontologist colleagues. Paleontologists have important incentives to contribute streamlined calibration data for divergence dating. If paleontological data can be elevated to their proper position in this synthesis, it will result in more citations and funding. Raising the bar to expect morphological phylogenies to be explicitly reconciled with molecular analyses will encourage the comparison of phylogenetic signals arising for different classes of data and highlight potential areas for future research (e.g., differences in rates of morphological and molecular evolution, relationships between diversification and disparity). The recommendations to explicitly justify numeric ages will further integrate stratigraphy and geochronology with anatomical systematics. The need for more objective ways to characterize soft maximum dates should stimulate the development of bioinformatic methods for better quantifying the fossil record. Beyond cleaning up suspect data, refocusing on the fossils will catalyze synthesis among different fields. By bringing all the neglected facets of paleontology to the fore, we can build a new community of interdisciplinary scholars eager to develop a more holistic and rigorous approach to the study of evolution and the history of life.

#### SUPPLEMENTARY MATERIAL

Supplementary appendices can be found online in the Dryad data repository ([doi:10.5061/dryad.m7n455k0](https://doi.org/10.5061/dryad.m7n455k0)).

#### FUNDING

This work was supported by the John D. and Catherine T. MacArthur Foundation funding of the

Biodiversity Synthesis Group of the Encyclopedia of Life and a BioSynC Synthesis Meeting (to J.F.P.); Natural Environment Research Council (to M.J.B. and P.C.J.D.); The Biotechnology and Biological Science Research Council (to P.C.J.D., Z.Y., and J.G.I.); Grants from the Leverhulme Trust (to M.J.B.); continuing work is supported by the National Evolutionary Synthesis Center (NESCent) (National Science Foundation no. EF-0905606). Funding to pay the Open Access publication charge was provided through an award from the University of Utah J. Willard Marriott Library Open Access Publishing Fund.

#### ACKNOWLEDGMENTS

Thomas Near, Ron Debry, and three anonymous reviewers are thanked for their helpful comments and suggestions. This work was initiated at a BioSynC Synthesis meeting in Bristol, UK in September, 2009. The Department of Earth Sciences at the University of Bristol is thanked for graciously hosting this meeting. Sarah Rieboldt (Geological Survey of Alabama) provided assistance with figures and appendices. Henry Gilbert (California State University East Bay, Human Evolution Research Center) provided valuable discussions regarding the hominin fossil record. We thank Suzanne Strait (Marshall University) for permission to use the image of *Diacodexis ilicis* from the Paleoview3d project for Figure 2.

#### REFERENCES

- Abdul Aziz H., Hilgen F.J., van Luijk G.M., Sluijs A., Kraus M.J., Pares J.M., Gingerich P.D. 2008. Astronomical climate control on paleosol stacking patterns in the upper Paleocene—lower Eocene Willwood Formation, Bighorn Basin, Wyoming. *Geology* 36: 531–534.
- Alfaro M.E., Santini F., Brock C., Alamillo H., Dornburg A., Rabosky D.L., Carnevale G., Harmon L.J. 2009. Nine exceptional radiations plus high turnover explain species diversity in jawed vertebrates. *Proc. Natl. Acad. Sci. U.S.A.* 106:13410–13414.
- Archibald J.D. 1996. Fossil evidence for a Late Cretaceous origin of “hoofed” mammals. *Science* 272:1150–1153.
- Archibald J.D., Averianov A.O., Ekdale E.G. 2001. Late Cretaceous relatives of rabbits, rodents, and other extant eutherian mammals. *Nature* 414:62–65.
- Asher R.J., Bennett N., Lehmann T. 2009. The new framework for understanding placental mammal evolution. *BioEssays* 31:853–864.
- Asher R.J., Meng J., Wible J.R., McKenna M.C., Rougier G.W., Dashzeveg D., Novacek M.J. 2005. Stem Lagomorpha and the antiquity of Glires. *Science* 307:1091–1094.
- Becker R.E., Valverde R.A., Crother B.I. 2011. Proopiomelanocortin (POMC) and testing the phylogenetic position of turtles (Testudines). *J. Zool. Syst. Evol. Res.* 49:148–159.
- Bell C.J., Gauthier J.A., Bever G.S. 2010. Covert biases, circularity, and apomorphies: a critical look at the North American Quaternary herpetofaunal stability hypothesis. *Quatern. Int.* 217:30–36.
- Benton M.J., Ayala F.J. 2003. Dating the tree of life. *Science* 300:1698–1700.
- Benton M.J., Donoghue P.C.J. 2007. Paleontological evidence to date the Tree of Life. *Mol. Biol. Evol.* 24:26–53.
- Benton M.J., Donoghue P.C.J., Asher R.J. 2009. Calibrating and constraining molecular clocks. In: Hedges S.B., Kumar S., editors. *The Timetree of Life*. Oxford: Oxford University Press. p. 35–86.

- Benton M.J., Tverdokhlebov V.P., Surkov M.V. 2004. Ecosystem remodelling among vertebrates at the Permian-Triassic boundary in Russia. *Nature* 432:97–100.
- Bever G.S. 2005. Variation in the ilium of North American *Bufo* (Lissamphibia; Anura) and its implications for species-level identification of fragmentary anuran fossils. *J. Vert. Paleontol.* 25:548–560.
- Boyd C.A., Brown C.M., Scheetz R., Clarke J.A. 2009. Taxonomic revision of the basal neornithischian taxa *Thescelosaurus* and *Bugenasaura*. *J. Vert. Paleontol.* 29:758–770.
- Brochu C.A. 1997. Morphology, fossils, divergence timing, and the phylogenetic relationships of *Gavialis*. *Syst. Biol.* 46:479–522.
- Brochu C.A. 2000. Phylogenetic relationships and divergence timing of *Crocodylus* based on morphology and the fossil record. *Copeia* 2000:657–673.
- Brochu C.A., Sumrall C.D., Theodor J.M. 2004. When clocks (and communities) collide: estimating divergence time from molecules and the fossil record. *J. Paleontol.* 78:1–6.
- Brusatte S.L., Niedzwiedzki G., Butler R.J. 2011. Footprints pull origin and diversification of dinosaur stem lineage deep into Early Triassic. *Proc. R. Soc. Lond. B* 278:1107–1113.
- Cadena E.A., Ksepka D.T., Jaramillo C.A., Bloch J.I. 2012. New pelomedusoid turtles (Testudines, Panpleurodira) from the late Paleocene Cerrejón Formation of Colombia and implications for phylogeny and body size evolution. *J. Syst. Palaeontol.* 10.
- Cao Y., Sorenson M.D., Kumazawa Y., Mindell D.P., Hasegawa M. 2000. Phylogenetic position of turtles among amniotes: evidence from mitochondrial and nuclear genes. *Gene* 259:139–148.
- Carrano M.T., Wilson J.A. 2001. Taxon distributions and the tetrapod track record. *Paleobiology* 27:564–582.
- Clarke J.T., Warnock R.C.M., Donoghue, P.C.J. 2011. Establishing a time-scale for plant evolution. *New Phytol.* 192:266–301.
- Cotton J.A., Page R.D.M. 2002. Going nuclear: gene family evolution and vertebrate phylogeny reconciled. *Proc. R. Soc. Lond. B.* 269:1555–1561.
- Danilov I.G., Parham J.F. 2005. A reassessment of the referral of an isolated skull from the Late Cretaceous of Uzbekistan to the stem-testudinoid turtle genus *Lindholmemys*. *J. Vert. Paleontol.* 25:784–791.
- Danilov I.G., Parham J.F. 2006. A redescription of 'Plesiochelys' *tatsuensis*, a turtle from the Late Jurassic of China, and its bearing on the antiquity of the crown clade Cryptodira. *J. Vert. Paleontol.* 26:573–580.
- Dickinson W.R., Gehrels G.E. 2009. Use of U-Pb ages of detrital zircons to infer maximum depositional ages of strata: a test against a Colorado Plateau Mesozoic database. *Earth Planet. Sci. Lett.* 288:115–125.
- Dodson E.O. 1960. *Evolution: process and product*. New York: Reinhold Publishing Corporation. 352 pp.
- Donoghue P.C.J., Benton M.J. 2007. Rocks and clocks: calibrating the Tree of Life using fossils and molecules. *Trends Ecol. Evol.* 22:424–431.
- Donoghue P.C.J., Purnell M.A. 2009. Distinguishing heat from light in debate over controversial fossils. *BioEssays* 31:178–189.
- Dornburg A., Beaulieu J.M., Oliver J.C., Near T.J. 2011. Integrating fossil preservation bias in the selection of calibrations for molecular divergence time estimation. *Syst. Biol.* 60:519–527.
- Drummond A.J., Ho S.Y.W., Phillips M.J., Rambaut A. 2006. Relaxed phylogenetics and dating with confidence. *PLoS Biol.* 4:e88.
- Erwin D.H. 2006. Dates and rates: temporal resolution in the deep time stratigraphic record. *Ann. Rev. Earth Planet. Sci.* 34:569–590.
- Friedman M., Brazeau M.D. 2010. Sequences, stratigraphy and scenarios: what can we say about the fossil record of the earliest tetrapods? *Proc. R. Soc. Lond. B* 278:432–439.
- Gandolfo M.A., Nixon K.C., Crepet W.L. 2008. Selection of fossils for calibration of molecular dating models. *Ann. MO Bot. Gard.* 95:34–42.
- Gandolfo M.A., Nixon K.C., Crepet W.L., Ratcliffe G.E. 1997. A new fossil fern assignable to Gleicheniaceae from Late Cretaceous sediments of New Jersey. *Am. J. Bot.* 84:483–493.
- Gingerich P.D. 1989. New earliest Wasatchian mammalian fauna from the Eocene of northwestern Wyoming: composition and diversity in a rarely sampled high-floodplain assemblage. *Museum of Paleontology, The University of Michigan* 28, 1–97.
- Gower D.J., Sennikov A.G. 1996a. Endocranial casts of early archosaurian reptiles. *Paläont. Zeitsch.* 70:579–589.
- Gower D.J., Sennikov A.G. 1996b. Morphology and phylogenetic informativeness of early archosaur braincases. *Palaeontology* 39:883–906.
- Gower D.J., Sennikov A.G. 1997. *Sarmatosuchus* and the early history of the Archosauria. *J. Vert. Paleontol.* 17:60–73.
- Gower D.J., Sennikov A.G. 2000. Early archosaurs from Russia. In: Benton M.J., Kurochkin E.N., Shishkin M.A., Unwin D.M., editors. *The age of dinosaurs in Russia and Mongolia*. Cambridge, UK: Cambridge University Press. p. 140–159.
- Gradstein F., Ogg J., Smith A.G. (editors). 2004. *A Geologic Time Scale 2004*. Cambridge, UK: Cambridge University Press. 589 pp., 1 pl.
- Graur D., Martin W. 2004. Reading the entrails of chickens: molecular timescales of evolution and the illusion of precision. *Trends Genet.* 20:80–86.
- Grauvogel-Stamm L., Ash S.R. 2005. Recovery of the Triassic land flora from the end-Permian life crisis. *Comptes Rendus Palevol.* 4:525–540.
- Heads M. 2011. Old taxa on young islands: a critique of the use of island age to date island-endemic clades and calibrate phylogenies. *Syst. Biol.* 60:204–218.
- Hedges S.B., Kumar S. 2004. Precision of molecular time estimates. *Trends Genet.* 20:242–247.
- Hedges S.B., Poling L.L. 1999. A molecular phylogeny of reptiles. *Science* 283:998–1001.
- Hedman M.M. 2010. Constraints on clade ages from fossil outgroups. *Paleobiology* 36:16–31.
- Hennig W. 1981. *Insect phylogeny*. New York: John Wiley & Sons. 514 pp.
- Hermans E.J., Hendricks J.R. 2008. W(h)ither fossils? Studying morphological character evolution in the age of molecular sequences. *Ann. Missouri Botanical Garden* 95:72–100.
- Hess J.C., Lippolt H.J. 1986. <sup>40</sup>Ar/<sup>39</sup>Ar ages of tonstein and tuff sanidines—new calibration points for the improvement of the Upper Carboniferous time scale. *Chem. Geol.* 59:143–154.
- Ho S.Y.W., Phillips M.J. 2009. Accounting for calibration uncertainty in phylogenetic estimation of evolutionary divergence times. *Syst. Biol.* 58:367–380.
- Holland S.M. 2003. Confidence limits on fossil ranges that account for facies changes. *Paleobiology* 29:468–479.
- Hugall A.F., Foster R., Lee M.S.Y. 2007. Calibration choice, rate smoothing, and the pattern of tetrapod diversification according to the long nuclear gene RAG-1. *Syst. Biol.* 56:543–563.
- Hurley I.A., Mueller R.L., Dunn K.A., Schmidt E.J., Friedman M., Ho R.K., Prince V.E., Yang Z.H., Thomas M.G., Coates M.I. 2007. A new time-scale for ray-finned fish evolution. *Proc. R. Soc. Lond. B* 1609:489–498.
- Inoue J., Donoghue P.C.J., Yang Z.H. 2010. The impact of the representation of fossil calibrations on Bayesian estimation of species divergence times. *Syst. Biol.* 59:74–89.
- Irmis R.B., Martz J.W., Parker W.G., Nesbitt S.J. 2010. Re-evaluating the correlation between Late Triassic terrestrial vertebrate biostratigraphy and the GSSP-defined marine stages. *Albertiana* 38:40–52.
- Iwabe N., Hara Y., Kumazawa Y., Shibamoto K., Saito Y., Miyata T., Katoh K. 2005. Sister group relationship of turtles to the bird-crocodylian clade revealed by nuclear DNA-coded proteins. *Mol. Biol. Evol.* 22:810–813.
- Jablonski D., Finarelli J.A. 2009. Congruence of morphologically-defined genera with molecular phylogenies. *Proc. Natl. Acad. Sci. U.S.A.* 106:8262–8266.
- Katsu Y., Braun E.L., Guillet L.J. Jr., Iguchi T. 2009. From reptilian phylogenomics to reptilian genomes: analyses of *c-Jun* and *DJ-1* proto-oncogenes. *Cytog. Gen. Res.* 127:79–93.
- Kimura Y. 2010. The earliest record of birch mice from the Early Miocene Nei Mongol, China. *Naturwiss.* 98:87–95.
- Kluge A.G. 1989. A concern for evidence and a phylogenetic hypothesis of relationships among *Epicrates* (Boidae, Serpentes). *Syst. Zool.* 38:7–25.
- Krassilov V., Karasev E. 2009. Paleofloristic evidence of climate change near and beyond the Permian-Triassic boundary. *Palaeogeog. Palaeoclim. Palaeoecol.* 284:326–336.

- Ksepka D.T. 2009. Broken gears in the avian molecular clock: new phylogenetic analyses support stem galliform status for *Gallinuloides wyomingensis* and rallid affinities for *Amitabha urbsinterdictensis*. *Cladistics* 25:173–197.
- Ksepka D.T., Benton M.J., Carrano M.T., Gandolfo M.A., Head J.J., Hermesen E.J., Joyce W.G., Lamm K.S., Patané J.S.L., Phillips M.J., Polly P.D., van Tuinen M., Ware J.L., Warnock R.C.M., Parham J.F. 2011. Synthesizing and databasing fossil calibrations: divergence dating and beyond. *Biol. Lett.* 2011:801–803.
- Kumazawa Y. 2007. Mitochondrial genomes from major lizard families suggest their phylogenetic relationships and ancient radiations. *Gene* 388: 19–26.
- Kumazawa Y., Nishida M. 1999. Complete mitochondrial DNA sequences of the green turtle and blue-tailed mole skink: statistical evidence for archosaurian affinity of turtles. *Mol. Biol. Evol.* 16: 784–792.
- Kürschner W.M., Herrgreen G.F.W. 2010. Triassic palynology of central and northwestern Europe: a review of palynofloral diversity patterns and biostratigraphic subdivisions. *Geol. Soc. Lond. Spec. Pub.* 334:263–283.
- Lee M.S.Y. 1999. Molecular clock calibrations and metazoan divergence dates. *J. Mol. Evol.* 49:385–391.
- Lee M.S.Y., Skinner A. 2011. Testing fossil calibrations for vertebrate molecular trees. *Zool. Scripta* 40:538–543.
- Li R., Lockley M.G., Makovicky P.J., Matsukawa M., Norell M.A., Harris J.D., Liu M. 2008. Behavioral and faunal implications of Early Cretaceous deinonychosaur trackways from China. *Naturwissenschaften* 95:185–191.
- Lindström S., McLaughlin S. 2007. Synchronous palynofloristic extinction and recovery after the end-Permian event in the Prince Charles Mountains, Antarctica: implications for palynofloristic turnover across Gondwana. *Rev. Palaeobot. Palynol.* 145:89–122.
- Looy C.V., Twitchett R.J., Dilcher D.L., Van Konijnenburg-Van Cittert J.H.A., Visscher H. 2001. Life in the end-Permian dead zone. *Proc. Natl. Acad. Sci. U.S.A.* 98:7879–7883.
- Lucas S., Schoch R. 2002. Triassic temnospondyl biostratigraphy, biochronology and correlation of the German Buntsandstein and North American Moenkopi Formation. *Lethaia* 35:97–106.
- Luo Z.X., Wible J.R. 2005. A Late Jurassic digging mammal and early mammalian diversification. *Science* 308:103–107.
- Lyson T.R., Bever G.S., Bhullar B.A.S., Joyce W.G., Gauthier J.A. 2010. Transitional fossils and the origin of turtles. *Biol. Lett.* 6:830–833.
- Lyson T.R., Sperling E.A., Heimberg A.M., Gauthier J.A., King B.L., Peterson K.J. 2012. MicroRNAs support a turtle + lizard clade. *Biol. Lett.*
- Makovicky P.J. 2010. A redescription of the Montanoceratops cerorhynchus holotype, with a review of referred material. In: Ryan M.J., Chinnery-Allgeier B., Eberth D.A., editors. *New perspectives on horned Dinosaurs*. Bloomington, IN: Indiana University Press. p. 68–82.
- Mannen H., Li S.S. 1999. Molecular evidence for a clade of turtles. *Mol. Phylogenet. Evol.* 13:144–148.
- Marshall C.R. 1990. The fossil record and estimating divergence times between lineages: maximum divergence times and the importance of reliable phylogenies. *J. Mol. Evol.* 30:400–408.
- Marshall C.R. 1997. Confidence intervals on stratigraphic ranges with nonrandom distribution of fossil horizons. *Paleobiology* 23: 165–173.
- Marshall C.R. 2008. A simple method for bracketing absolute divergence times on molecular phylogenies using multiple fossil calibration points. *Am. Nat.* 171:726–742.
- Martz J.W., Parker W.G. 2010. Revised Lithostratigraphy of the Sonsela Member (Chinle Formation, Upper Triassic) in the Southern Part of Petrified Forest National Park, Arizona. *PLoS One* 5:e9329.
- Marx F.G. 2009. Marine mammals through time: when less is more in studying palaeodiversity. *Proc. R. Soc. Lond. B* 276:887–892.
- Menning M., Weyer D., Drozdowski G., Amerom H.W.J., Wendt I.A. 2000. Carboniferous time scale 2000: discussion and use of geological parameters as time indicators from Central and Western Europe. *Geol. Jahrb. A* 156:3–44.
- Meyer-Berthaud B., Taylor E.J., Taylor T.N. 1992. Reconstructing the Gondwana seed fern *Dicroidium*: evidence from the Triassic of Antarctica. *Geobios* 25:341–344.
- Morales M. 1987. Terrestrial fauna and flora the Triassic Moenkopi Formation of the southwestern United States. *J. AZ-NV. Acad. Sci.* 22:1–20.
- Müller J., Reisz R.R. 2005. Four well-constrained calibration points from the vertebrate fossil record for molecular clock estimates. *BioEssays* 27:1069–1075.
- Mundil R., Ludwig K.R., Metcalfe I., Renne P.R. 2004. Age and timing of the Permian mass extinctions: U/Pb dating of closed-system zircons. *Science* 305:1760–1763.
- Mundil R., Pálffy J., Renne P.R., Brack P. 2010. The Triassic time scale: new constraints and a review of geochronological data. *Geol. Soc. Lond. Spec. Pub.* 334:41–60.
- Near T.J., Meylan P.A., Shaffer H.B. 2005. Assessing concordance of fossil calibration points in molecular clock studies: an example using turtles. *Am. Nat.* 165:137–146.
- Near T.J., Sanderson M.J. 2004. Assessing the quality of molecular divergence time estimates by fossil calibrations and fossil-based model selection. *Philos. Trans. R. Soc. Lond. B* 359:1477–1483.
- Nesbitt S.J. 2003. *Arizonasaurus* and its implications for archosaur divergence. *Proc. R. Soc. Lond. B* 270:S234–S237.
- Nesbitt S.J. 2005. Osteology of the Middle Triassic pseudosuchian archosaur *Arizonasaurus babbitti*. *Hist. Biol.* 17:19–47.
- Nesbitt S.J. 2007. The anatomy of *Effigia okeefeae* (Archosauria, Suchia), theropod-like convergence, and the distribution of related taxa. *Bull. Amer. Mus. Nat. Hist.* 302:1–84.
- Nesbitt S.J., Liu J., Li C. 2011. A sail-backed suchian from the Heshangou Formation (Early Triassic: Olenekian) of China. *Earth Environ. Sci. Trans. R. Soc. Edinburgh* 101:271–284.
- Nesbitt S.J., Norell M.A. 2006. Extreme convergence in the body plans of an early suchian (Archosauria) and ornithomimid dinosaurs (Theropoda). *Proc. Roy. Soc. Lond. B* 273:1045–1048.
- Nesbitt S.J., Sidor C.A., Irmis R.B., Angielczyk K.D., Smith R.M.H., Tsuji L.A. 2010. Ecologically distinct dinosaurian sister group shows early diversification of Ornithodira. *Nature* 464: 95–98.
- Norell M.A. 1992. Taxon origin and temporal diversity: the effect of phylogeny. In: Novacek M.J., Wheeler Q.D., editors. *Extinction and phylogeny*. New York: Columbia University Press. p. 89–118.
- Ogg G. 2010. International stratigraphic chart. International Commission on Stratigraphy. Available from: [http://www.stratigraphy.org/ics%20chart/09\\_2010/StratChart2010.pdf](http://www.stratigraphy.org/ics%20chart/09_2010/StratChart2010.pdf).
- Okajima Y., Kumazawa Y. 2010. Mitochondrial genomes of acrodont lizards: timing of gene rearrangements and phylogenetic and biogeographic implications. *BMC Evol. Biol.* 10:141.
- O’Leary M.A., Gatesy J. 2008. Impact of increased character sampling on the phylogeny of Cetartiodactyla (Mammalia): combined analysis including fossils. *Cladistics* 24:397–442.
- Padian K. 2000. Feathers, fakes, and fossil dealers: how the commercial sale of fossils erodes science and education. *Palaeontol. Electron.* 3.
- Parham J.F. 2005. A reassessment of the referral of sea turtle skulls to the genus *Osteopygis* (Late Cretaceous, New Jersey, USA). *J. Vert. Paleontol.* 25:71–77.
- Parham J.F., Irmis R.B. 2008. Caveats on the use of fossil calibrations for molecular dating: a comment on Near et al. *Am. Nat.* 171: 132–136.
- Paton T., Haddrath O., Baker A.J. 2002. Complete mitochondrial DNA genome sequences show that modern birds are not descended from transitional shorebirds. *Proc. R. Soc. Lond. B* 269:839–846.
- Pereira S.L., Baker A.J. 2006. A mitogenomic timescale for birds detects variable phylogenetic rates of molecular evolution and refutes the standard molecular clock. *Mol. Biol. Evol.* 23:1731–1740.
- Phillips M.J., Bennett T.H., Lee M.S.Y. 2010. Molecules, morphology, and ecology indicate a recent, amphibious ancestry for echidnas. *Proc. Natl. Acad. Sci. U.S.A.* 106:17089–17094.
- Pol D. 2004. Empirical problems of the hierarchical likelihood ratio test for model selection. *Syst. Biol.* 53:949–962.
- Pyron R.A. 2010. A likelihood method for assessing molecular divergence time estimates and the placement of fossil calibrations. *Syst. Biol.* 59:185–194.
- Rayfield E.J., Barrett P.M., McDonnell R.A., Willis K.J. 2005. A Geographical Information System (GIS) study of Triassic vertebrate biochronology. *Geol. Mag.* 142:327–354.

- Rayfield E.J., Barrett P.M., Milner A.R. 2009. Utility and validity of Middle and Late Triassic 'land vertebrate faunachrons'. *J. Vert. Paleontol.* 29:80–87.
- Reisz R.R., Müller J. 2004a. Molecular timescales and the fossil record: a paleontological perspective. *Trends Genet.* 20:237–241.
- Reisz R.R., Müller J. 2004b. The comparative method for evaluating fossil calibration dates: a reply to Hedges and Kumar. *Trends Genet.* 20:596–597.
- Renne P.R., Mundil R., Balco G., Min K., Ludwig K.R. 2010. Joint determination of  $^{40}\text{K}$  decay constants and  $^{40}\text{Ar}^*/^{40}\text{K}$  for the Fish Canyon sanidine standard, and improved accuracy for  $^{40}\text{Ar}/^{39}\text{Ar}$  geochronology. *Geochim. Cosmochim. Acta* 74:5349–5367.
- Rest J.S., Ast J.C., Austin C.C., Waddell P.J., Tibbetts E.A., Hay J.M., Mindell D.P. 2003. Molecular systematics of primary reptilian lineages and the tuatara mitochondrial genome. *Mol. Phylogenet. Evol.* 29:289–297.
- Rubidge B.S. 2005. Re-uniting lost continents—fossil reptiles from the ancient Karoo and their wanderlust. *S. Afr. J. Geol.* 108:135–172.
- Rutschmann F., Eriksson T., Abu Salim K., Conti E. 2007. Assessing calibration uncertainty in molecular dating: the assignment of fossils to alternative calibration points. *Syst. Biol.* 56:591–608.
- Sanders K.L., Mumpuni, Hamidy A., Head J.J., Gower D.J. 2010. Phylogeny and divergence times of file snakes (*Acrochordus*): inferences from morphology, fossils and three molecular loci. *Mol. Phylogenet. Evol.* 56:857–867.
- Sansom, R.S., Gabbott S.E., Purnell M.A. 2010. Non-random decay of chordate characters causes bias in fossil interpretation. *Nature* 463:797–800.
- Shaul S., Graur D. 2002. Playing chicken (*Gallus gallus*): methodological inconsistencies of molecular divergence date estimates due to secondary calibration points. *Gene* 300:59–61.
- Shedlock A.M., Botka C.W., Zhao S., Shetty J., Zhang T., Liu J.S., Deschavannee P.J., Edwards S.V. 2007. Phylogenomics of nonavian reptiles and the structure of the ancestral amniote genome. *Proc. Natl. Acad. Sci. U.S.A.* 104:2767–2772.
- Shen X.-X., Liang D., Wen J.-Z., Zhang P. 2011. Multiple genome alignments facilitate development of NPCL markers: a case study of tetrapod phylogeny focusing on the position of turtles. *Mol. Biol. Evol.* 28:3237–3252.
- Shu O., Norris G. 1988. Spores and pollen from the Lower Triassic Heshangou Formation, Shaanxi Province, North China. *Rev. Palaeobot. Palynol.* 54:187–231.
- Smith N.D. 2010. Phylogenetic analysis of Pelecaniformes (Aves) based on osteological data: implications for waterbird phylogeny and fossil calibration studies. *PLoS One* 5:e13354.
- Smith K.T. 2011. The evolution of mid-latitude faunas during the Eocene: lizards of the Medicine Pole Hills reconsidered. *Bull. Peabody Mus. Nat. Hist.* 52:3–105.
- Smith N.D., Crandall J.R., Hellert S.M., Hammer W.R., Makovicky P.J. 2011. Anatomy and affinities of large archosauromorphs from the lower Fremouw Formation (Early Triassic) of Antarctica. *J. Vert. Paleontol.* 31:784–797.
- Springer M.S., Teeling E.C., Madsen O., Stanhope M.J., de Jong W.W. 2001. Integrated fossil and molecular data reconstruct bat echolocation. *Proc. Natl. Acad. Sci. U.S.A.* 98:6241–6246.
- Steiner M.B., Morales M., Shoemaker E.M. 1993. Magnetostratigraphic, biostratigraphic, and lithologic correlations in Triassic strata of the western United States. *SEPM Spec. Pub.* 49:41–57.
- Strauss D., Sadler P.M. 1989. Classical confidence intervals and Bayesian probability estimates for the ends of local taxon ranges. *Math. Geol.* 21:411–427.
- Theodor J.M. 2004. Molecular clock divergence estimates and the fossil record of Cetartiodactyla. *J. Paleontol.* 78:39–44.
- Thorne J.L., Kishino H., Painter I.S. 1998. Estimating the rate of evolution of the rate of molecular evolution. *Mol. Biol. Evol.* 15:1647–1657.
- Uhen M.D., Pyenson N.D. 2007. Diversity estimates, biases, and historiographic effects: resolving cetacean diversity in the Tertiary. *Palaeontol. Electron.* 10:11A.
- van Tuinen M., Hadly E.A. 2004a. Error in estimation of rate and time inferred from the early amniote fossil record and avian molecular clocks. *J. Mol. Evol.* 59:267–276.
- van Tuinen M., Hadly E.A. 2004b. Calibration and error in placental molecular clocks: a conservative approach using the cetartiodactyl fossil record. *J. Hered.* 95:200–208.
- van Tuinen M., Hedges S.B. 2004. The effect of external and internal fossil calibrations on the avian evolutionary timescale. *J. Paleontol.* 78:45–50.
- van Tuinen M., Ramakrishnan U., Hadly E.A. 2004. Investigating the effect of environmental change on biotic evolution: genetic contributions, current work and future developments. *Philos. Trans. R. Soc. Lond. Ser. A* 362:2795–2820.
- Wang Z.-Q. 1996. Recovery of vegetation from the terminal Permian mass extinction in North China. *Rev. Palaeobot. Palynol.* 91:121–142.
- Walker J.D., Geissman J.W. 2009. Geologic time scale. *GSA Today* 19:60–61.
- Warnock R.C.M., Yang Z., Donoghue P.C.J. 2012. Exploring uncertainty in the calibration of the molecular clock. *Biol. Lett.*
- Weinbaum J.C., Hungerbühler A. 2007. A revision of *Poposaurus gracilis* (Archosauria: Suchia) based on two new specimens from the Late Triassic of the southwestern U.S.A. *Paläont. Zeitsch.* 81:131–145.
- Westerhold T., Rohl U., McCarran H.K., Zachos J.C. 2009. Latest on the absolute age of the Paleocene-Eocene Thermal Maximum (PETM): new insights from exact stratigraphic position of key ash layers +19 and -17. *Earth Planet. Sci. Lett.* 287:412–419.
- Wiens J.J., Kuczynski C.A., Townsend T., Reeder T.W., Mulcahy D.G., Sites J.W. 2010. Combining phylogenomics and fossils in higher-level squamate reptile phylogeny: molecular data change the placement of fossil taxa. *Syst. Biol.* 59:674–688.
- Wilkinson R.D., Steiper M.E., Soligo C., Martin R.D., Yang Z., Tavaré S. 2011. Dating primate divergences through and integrated analysis of paleontological and molecular data. *Syst. Biol.* 60:16–31.
- Wu X. 1981. The discovery of a new thecodont from north-east Shensi. *Vert. Palaeontol.* 19:122–132.
- Yang Z. 2006. Computational molecular evolution. Oxford: Oxford University Press. 374 pp.
- Yang Z., Rannala B. 2006. Bayesian estimation of species divergence times under a molecular clock using multiple fossil calibrations with soft bounds. *Mol. Biol. Evol.* 23:212–226.
- Yates A.M. 2003. The species taxonomy of the sauropodomorph dinosaurs from the Löwenstein Formation (Norian, Late Triassic) of Germany. *Palaeontology* 46:317–337.
- Zardoya R., Meyer A. 1998. Complete mitochondrial genome suggests diapsid affinities of turtles. *Proc. Natl. Acad. Sci. U.S.A.* 95:14226–14231.
- Zuckerkandl E., Pauling L. 1962. Molecular disease, evolution, and genetic heterogeneity. In: Kasha M., Pullman B., editors. *Horizons in biochemistry*. New York: Academic Press. p. 189–225.



Minerva Access is the Institutional Repository of The University of Melbourne

**Author/s:**

Parham, JF; Donoghue, PCJ; Bell, CJ; Calway, TD; Head, JJ; Holroyd, PA; Inoue, JG; Irmis, RB; Joyce, WG; Ksepka, DT; Patane, JSL; Smith, ND; Tarver, JE; van Tuinen, M; Yang, Z; Angielczyk, KD; Greenwood, JM; Hipsley, CA; Jacobs, L; Makovicky, PJ; Mueller, J; Smith, KT; Theodor, JM; Warnock, RCM; Benton, MJ

**Title:**

Best Practices for Justifying Fossil Calibrations

**Date:**

2012-03-01

**Citation:**

Parham, J. F., Donoghue, P. C. J., Bell, C. J., Calway, T. D., Head, J. J., Holroyd, P. A., Inoue, J. G., Irmis, R. B., Joyce, W. G., Ksepka, D. T., Patane, J. S. L., Smith, N. D., Tarver, J. E., van Tuinen, M., Yang, Z., Angielczyk, K. D., Greenwood, J. M., Hipsley, C. A., Jacobs, L., ... Benton, M. J. (2012). Best Practices for Justifying Fossil Calibrations. *SYSTEMATIC BIOLOGY*, 61 (2), pp.346-359. <https://doi.org/10.1093/sysbio/syr107>.

**Persistent Link:**

<http://hdl.handle.net/11343/263060>

**File Description:**

Published version

**License:**

CC BY-NC