

Minerva Access is the Institutional Repository of The University of Melbourne

Author/s:

Feig, DS;Asztalos, E;Corcoy, R;De Leiva, A;Donovan, L;Hod, M;Jovanovic, L;Keely, E;Kollman, C;McManus, R;Murphy, K;Ruedy, K;Sanchez, JJ;Tomlinson, G;Murphy, HR;Cleave, B;Donat, D;Gandhi, S;Strom, M;Chico, Al;José Martínez, M;Sánchez, M;Tundidor, D;Amiel, S;Hunt, K;Green, L;Rogers, H;Rossi, B;Stodhart, B;Bonomo, M;Bertuzzi, F;Corica, GD;Fazio, S;Giro, R;Mion, E;Moletta, A;Pintaudi, B;Sorrentino, R;Booth, J;McInnes, N;Nykamp, A;Otto, R;Smith, A;Stanton, I;Tazzeo, T;Oldford, C;Young, C;Gougeon, C;Houlden, R;Breen, A;Castorino, K;Sansum, W;Erin Keely;;Clark, H;Gaudet, L;Karovitch, A;Malcolm, J;Lowe, J;Rogowsky, A;Kudirka, A;Watson, M;Morris, D;Farnworth, F;Fowler, D;Mitchell, S;Rosier, J;Murphy, H;Byrne, C;Davenport, K;Grisoni, J;Mulrennan, S;Neoh, S;O'Sullivan, E;Simmons, D;Stewart, Z;Templin, H;Helen Murphy;;Turner, J;Canciani, G;Hewapathirana, N;Jones, L;Piper, L;Temple, R;Wallace, T;Maitland, R;Banerjee, A;Briley, A;Brackenridge, A;Gilby, P;Gill, C;Reid, A;Singh, C;White, S;Wolfs, M;Scott, E;Endersby, D;Maresh, M;Kearney, G;Morris, J;Quinn, S

Title:

CONCEPTT: Continuous Glucose Monitoring in Women with Type 1 Diabetes in Pregnancy Trial: A multi-center, multi-national, randomized controlled trial - Study protocol

Date:

2016-07-18

Citation:

Feig, D. S., Asztalos, E., Corcoy, R., De Leiva, A., Donovan, L., Hod, M., Jovanovic, L., Keely, E., Kollman, C., McManus, R., Murphy, K., Ruedy, K., Sanchez, J. J., Tomlinson, G., Murphy, H. R., Cleave, B., Donat, D., Gandhi, S., Strom, M., ... Quinn, S. (2016). CONCEPTT: Continuous Glucose Monitoring in Women with Type 1 Diabetes in Pregnancy Trial: A multi-center, multi-national, randomized controlled trial - Study protocol. *BMC Pregnancy and Childbirth*, 16 (1), <https://doi.org/10.1186/s12884-016-0961-5>.

Persistent Link:

<https://hdl.handle.net/11343/256469>

License:

CC BY

STUDY PROTOCOL

Open Access



CONCEPTT: Continuous Glucose Monitoring in Women with Type 1 Diabetes in Pregnancy Trial: A multi-center, multi-national, randomized controlled trial - Study protocol

Denice S. Feig^{1,2,3,17*}, Elizabeth Asztalos^{4,13}, Rosa Corcoy^{5,6}, Alberto De Leiva^{5,6}, Lois Donovan⁷, Moshe Hod⁸, Lois Jovanovic⁹, Erin Keely¹⁰, Craig Kollman¹¹, Ruth McManus¹², Kellie Murphy^{1,2}, Katrina Ruedy¹¹, J. Johanna Sanchez^{4,13}, George Tomlinson¹⁴, Helen R. Murphy^{15,16} and on behalf of the CONCEPTT Collaborative Group

Abstract

Background: Women with type 1 diabetes strive for optimal glycemic control before and during pregnancy to avoid adverse obstetric and perinatal outcomes. For most women, optimal glycemic control is challenging to achieve and maintain. The aim of this study is to determine whether the use of real-time continuous glucose monitoring (RT-CGM) will improve glycemic control in women with type 1 diabetes who are pregnant or planning pregnancy.

Methods/design: A multi-center, open label, randomized, controlled trial of women with type 1 diabetes who are either planning pregnancy with an HbA1c of 7.0 % to ≤ 10.0 % (53 to ≤ 86 mmol/mol) or are in early pregnancy (<13 weeks 6 days) with an HbA1c of 6.5 % to ≤ 10.0 % (48 to ≤ 86 mmol/mol). Participants will be randomized to either RT-CGM alongside conventional intermittent home glucose monitoring (HGM), or HGM alone. Eligible women will wear a CGM which does not display the glucose result for 6 days during the run-in phase. To be eligible for randomization, a minimum of 4 HGM measurements per day and a minimum of 96 hours total with 24 hours overnight (11 pm-7 am) of CGM glucose values are required. Those meeting these criteria are randomized to RT-CGM or HGM. A total of 324 women will be recruited (110 planning pregnancy, 214 pregnant). This takes into account 15 and 20 % attrition rates for the planning pregnancy and pregnant cohorts and will detect a clinically relevant 0.5 % difference between groups at 90 % power with 5 % significance. Randomization will stratify for type of insulin treatment (pump or multiple daily injections) and baseline HbA1c. Analyses will be performed according to intention to treat. The primary outcome is the change in glycemic control as measured by HbA1c from baseline to 24 weeks or conception in women planning pregnancy, and from baseline to 34 weeks gestation during pregnancy. Secondary outcomes include maternal hypoglycemia, CGM time in, above and below target (3.5–7.8 mmol/l), glucose variability measures, maternal and neonatal outcomes.

Discussion: This will be the first international multicenter randomized controlled trial to evaluate the impact of RT-CGM before and during pregnancy in women with type 1 diabetes.

Trial registration: ClinicalTrials.gov Identifier: NCT01788527 Registration Date: December 19, 2012.

Keywords: Diabetes mellitus type 1, Pregnancy, Preconception, Continuous glucose monitoring, Randomized controlled trial

* Correspondence: d.feig@utoronto.ca

¹Mt Sinai Hospital, Toronto, Ontario, Canada

²Lunenfeld-Tanenbaum Research Institute, Toronto, Ontario, Canada

Full list of author information is available at the end of the article

Background

Despite all efforts, women with type 1 diabetes in pregnancy continue to have increased rates of adverse pregnancy outcomes. Women aiming for optimal glycemic control are at substantially increased risk of severe hypoglycemia (episode of low blood glucose requiring third party assistance) as well as pregnancy related complications of gestational hypertension, preeclampsia and delivery by caesarean section. Infants of mothers with diabetes face increased risk of preterm delivery, macrosomia, neonatal hypoglycemia, hyperbilirubinaemia, respiratory distress and neonatal intensive care unit admissions. Macrosomia itself is associated with shoulder dystocia, birth injury, asphyxia and death. In a study of over 1,000,000 deliveries in Ontario, Canada, the rates of perinatal mortality and congenital anomalies among women with pre-existing diabetes in pregnancy were found to be approximately twice the rates of women without diabetes [1].

Numerous studies have shown that adverse pregnancy outcomes can be reduced with improved glycemic control. Pre-pregnancy care has been shown to assist women to improve glycemic control during the crucial period of organogenesis, and has been associated with reduced rates of adverse pregnancy outcomes including major congenital malformation, stillbirth and neonatal death. However, even motivated women who attend pre-pregnancy clinics still struggle to achieve and maintain optimal glycemic control [2].

CGM systems contain a subcutaneous glucose-sensing device which measures interstitial glucose and provide detailed information about the frequency and duration of glucose excursions, which is either unavailable to the user at the time of collection but available after (masked CGM) or available at the time (RT-CGM). One study comparing conventional home glucose monitoring (HGM) with masked CGM, found that CGM detected substantial hyperglycemia (>3 hours/day) and overnight hypoglycemia (1–4 hours) missed by conventional glucose monitoring [3]. Another study demonstrated that pregnant women with type 1 diabetes are still far from achieving the recommended glucose control target range of 3.9–7.8 mmol/l [4]. During the first trimester, masked CGM demonstrated that women spent 10–12 h per day hyperglycemic (>7.8 mmol/L) and 2–3 h hypoglycemic (<3.9 mmol/l). By the third trimester maternal hyperglycemia improved only slightly even with frequent antenatal clinic visits.

RT-CGM use provides additional information for the user to consider when adjusting diet, activity and insulin doses. A systematic review in non-pregnant adults, demonstrated that RT-CGM use is associated with modest improvements in glycemic control (a mean HbA1c reduction of 0.3 %), with maximal impact (up to 1.0 % reduction

in HbA1c) in those with poor glycaemic control who use CGM at least 6 days per week [5]. However data from two randomized trials in pregnancy are conflicting. In a UK trial of 71 women with type 1 and type 2 diabetes, randomized to wearing a masked CGM every 4–6 weeks compared to standard care with HGM, the use of the CGM was associated with both reduced HbA1c (0.6 %) and reduced risk of macrosomia (OR 0.36, 95 % CI 0.13–0.98) [6]. A subsequent Danish trial of 154 women, randomized to use RT-CGM intermittently (six days x five times) or standard care with HGM found no difference in glycemic control or neonatal outcomes [7]. This may have been because women had good glycaemic control at baseline and were not particularly compliant with RT-CGM, with only 60 % of women using it intermittently. A systematic review thus concluded that more research is needed to identify the most effective techniques of blood glucose monitoring in pregnant women [8].

The aim of this study is to determine whether the use of continuous RT-CGM will improve glycemic control in women with type 1 diabetes who are a) planning pregnancy and b) in early in pregnancy, without substantially increasing the rate of hypoglycemia.

Methods/design

Overall study design

CONCEPTT is a multicenter, randomized, open label, controlled trial with an intention-to-treat analysis of two parallel trials: one trial in women planning pregnancy, and one in women in early pregnancy. Thirty trial centers are located across six countries: Canada (11), UK (15), Spain (1), Italy (1), USA (1) and Ireland (1). Women with type 1 diabetes in pregnancy who are ≤ 13 weeks 6 days gestation with an HbA1c of 6.5 % to ≤ 10.0 % (48 to ≤ 86 mmol/mol), and women with type 1 diabetes planning pregnancy with an HbA1c of 7.0 % to ≤ 10.0 % (53 to ≤ 86 mmol/mol), will be eligible for the run-in phase (see Fig. 1). The run-in incorporates a 6-day period during which women wear a masked CGM (Medtronic iPro² Professional CGM with Enlite2 sensor) to ensure that they can tolerate wearing a CGM device. Women who pass the run-in (>96 hours total with ≥ 24 hours overnight [11 pm–7 am] of CGM data and at least 4 HGM measurements per day) are eligible for randomization. Eligible women are randomized to CGM (Medtronic MiniMed Guardian[®], Medtronic MiniMed Paradigm[®] Veo[™] or Medtronic MiniMed[®] 640G system as per participant insulin delivery method) along with usual HGM, or continue HGM without CGM. The primary outcome is the change in HbA1c from baseline to 24 weeks or conception in women planning pregnancy, and from baseline to 34 weeks gestation in women who are pregnant.

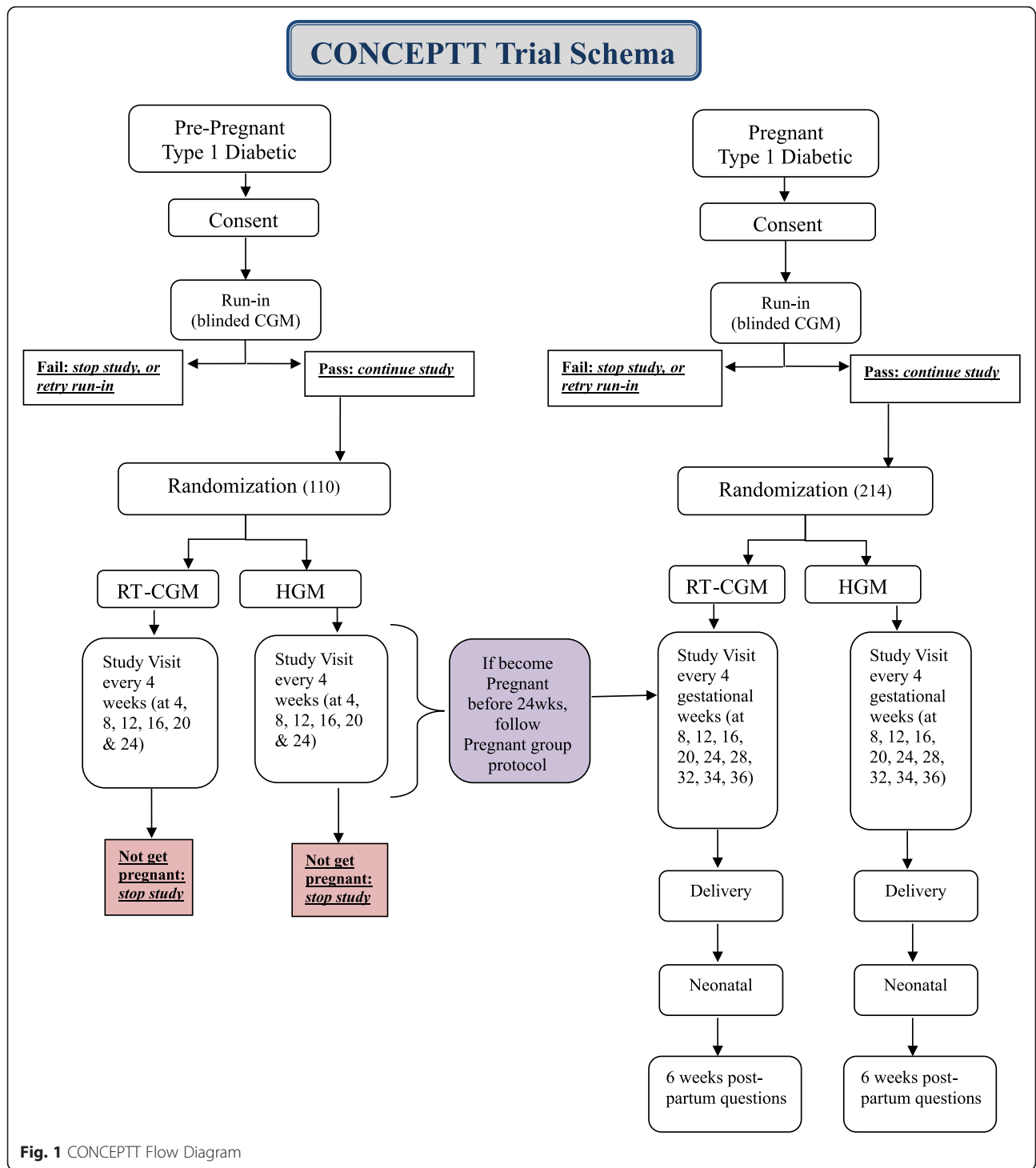


Fig. 1 CONCEPTT Flow Diagram

Primary research questions

1. Among women with type 1 diabetes who are planning pregnancy, does the addition of RT-CGM to HGM improve glycemic control, as measured by change in HbA1c from randomization to 24 weeks

(or at conception), when compared to a standard regimen of HGM without RT-CGM?

2. Among pregnant women with type 1 diabetes, does the addition of RT-CGM to a standard regimen of HGM improve glycemic control, as measured by change in HbA1c from randomization in early

pregnancy to 34 weeks gestation (or if pregnancy loss, latest measurement), when compared to a standard regimen of HGM without RT-CGM?

Eligibility criteria

To be eligible for the trial, participants must meet the following criteria:

- Clinical diagnosis of type 1 diabetes and using daily insulin therapy for at least one year
- Age 18–40 years
- Intensive insulin regimen involving either an insulin pump or multiple daily injections (MDI) of insulin
- No expectation that the participant will be moving out of the area during the next year

In addition, specific eligibility criteria apply for the pre-pregnant and pregnant cohorts:

Pre-pregnant cohort:

- Participants are planning pregnancy and wish to optimise glycaemic control before conception

Pregnant cohort:

- Pregnancy gestation ≤ 13 weeks, 6 days at time of randomization
- Live, singleton fetus
- Ultrasound (US) done to confirm gestational age, viability and to rule out a multiple pregnancy.

Gestational age will be based on the last menstrual period (LMP) provided (± 5 days discrepancy with US dates in the first trimester. If more than 5 days discrepancy from US date, or LMP not known, then US dates used).

Exclusion criteria

- Type 2 diabetes
- Gestational diabetes
- Regular home user of real-time CGM in the previous 3 months
- Previous participation in the trial
- Estimated GFR < 60 ml/min/1.73
- The presence of a significant medical disorder or use of a medication such as oral glucocorticoids that in the judgment of the investigator will affect wearing of the sensors or completion of the protocol.
- Inpatient psychiatric treatment in the past 6 months
- Participants using premixed fixed doses of insulin

In addition, specific exclusion criteria apply to the pre-pregnant and pregnant cohorts:

Pre-pregnancy cohort:

- HbA1c < 7.0 % (< 53 mmol/mol) or > 10.0 % (> 86 mmol/mol)

Pregnancy cohort:

- First HbA1c in pregnancy < 6.5 % (48 mmol/mol) or current HbA1c > 10.0 % (86 mmol/mol)
- Known higher order pregnancies (twins, triplets, etc.).
- Known fetal anomaly.

Recruitment

Clinicians involved in the care of women with type 1 diabetes (pre-pregnant and pregnant) determine whether a patient meets the eligibility criteria and ask if she is interested in the trial. Interested patients are given a participant information sheet and time to consider taking part. Women who participate are asked to provide written informed consent prior to commencing the run-in period. Baseline data including diabetes history, current diabetes management and obstetric history are obtained. A standard physical exam (vital signs, and height and weight measurements) is performed and the participants complete validated questionnaires including the Blood Glucose Monitoring System Rating Questionnaire, the Problem Areas in Diabetes Questionnaire, the SF-12 and the Hypoglycemia Fear Survey II. UK participants are invited to complete a three day food diary.

Run-in

The participant wears a masked CGM for 6 days. This provides a baseline assessment of glycaemic control and allows participants to wear the CGM before making a decision about whether or not to continue to be randomized. The participant must test using the HGM at least 4 times per day and wear the CGM for at least 5 days, obtaining at least 96 h of glucose values and have at least 24 h of values between 23.00–07.00 h to qualify for randomization. The run-in CGM data are downloaded for evaluation by an independent data coordinating center (Jaeb Center For Health Research Inc, Tampa, Florida, USA) and not reviewed by participants or their clinicians. Should the first run-in be unsuccessful (due to insufficient CGM data), a repeat CGM can be obtained.

Randomization

Participants who pass the run-in phase are randomized to either RT-CGM in addition to their standard HGM or HGM without CGM. The randomization process is run separately for the pre-pregnant and pregnant cohorts.

The participant's random group assignment is determined via the Centre for Mother, Infant, and Child Research trial website. They construct a master randomization list using a permuted block design. The participants are stratified by mode of insulin therapy (pump vs. MDI) and baseline

HbA1c (for pregnant group: <7.5 % or 58 mmol/mol vs. \geq 7.5 % or 58 mmol/mol; for pre-pregnant group: <8.0 % or 64 mmol/mol vs. \geq 8.0 % or 64 mmol/mol). Within strata, allocation are assigned in a ratio of 1:1 with random block sizes.

Intervention

RT-CGM group

Participants randomized to the RT-CGM group are instructed to use the device on a daily basis. Participants are taught to insert the sensor device, perform calibration tests, use insulin dose adjustment algorithms (see Supplementary Pages for example) and to make changes to their insulin regimen based on the data from the RT-CGM and HGM. Additional HGM glucose measurements may be performed anytime, particularly prior to making management decisions based on RT-CGM values.

HGM group

Participants randomized to the HGM group are asked to perform at least 7 finger stick blood glucose measurements per day. Participants are taught to use insulin dose adjustment algorithms and to make changes to their insulin regimen based on data from the HGM.

Follow-up visits and data collection

Visits take place every 4 weeks after randomization. For the prepregnant cohort, the final visit will be at 24 weeks following randomization or at the time pregnancy is confirmed. For the pregnancy cohort, the final visit will be at 34 weeks gestation. At each visit weight, blood pressure, insulin type and dose are collected. Glucose and insulin data are reviewed along with episodes of severe hypoglycemia. Recommendations regarding diabetes management are made by treating clinicians in routine antenatal clinics. For the RT-CGM group, the RT-CGM data are downloaded and the participant's skin is assessed. For the HGM groups, a masked CGM is used twice: for 6 days at 12 and 24 weeks in the pre-pregnant cohort and for 6 days at 24 and 34 weeks gestation in the pregnant cohort. Data from the masked CGM is downloaded to the Jaeb Center for independent review. The RT-CGM group have their RT-CGM data downloaded to the Jaeb Center for independent review 7–10 days after 12 and 24 weeks in the pre-pregnant cohort, and 24 and 34 weeks gestation in the pregnant cohort. Final questionnaires and food diaries for UK participants are repeated at 24 weeks in the pre-pregnant cohort or at time of conception, and at 34 weeks gestation in the pregnant cohort.

Bloods

Bloods are drawn for HbA1c at randomization, and at 12 and 24 weeks in the pre-pregnant cohort, and at 24 and 34 weeks gestation in the pregnant cohort. Biorepository

bloods are drawn in those that consent, at randomization and at 34 weeks gestation for the pregnant cohort only.

Delivery

At delivery, cord blood is taken for blood gases (done locally) and C-peptide. If the participant consents, cord blood biorepository sample is also collected for future research. Data is collected regarding delivery and neonatal outcomes. Fetal anthropometrics are done within the first 72 h after delivery. At 6 weeks postpartum data is collected regarding neonatal wellbeing and maternal satisfaction with participating in the trial.

Women that are in the pre-pregnant cohort who become pregnant, continue in the treatment arm they were randomized to, and are followed in a similar fashion to the pregnant cohort. However, their data are analyzed separately from the pregnant cohort.

Primary outcome

Pre-pregnant cohort

The primary outcome is glycemic control as measured by a change in HbA1c from randomization to 24 weeks. If the participant becomes pregnant before 24 weeks, her final HbA1c is measured post-confirmation of a positive pregnancy test.

Pregnant cohort

The primary outcome is glycemic control as measured by a change in HbA1c from randomization to 34 weeks gestation. In women who do not progress to 34 weeks gestation, the latest measured HbA1c is used to contribute to the primary outcome.

Secondary outcomes

Pre-pregnant cohort

- CGM time in target at baseline, 12 and 24 weeks.
- HbA1c at baseline, 12 and 24 weeks.

Pregnant cohort

- CGM time in target at baseline, 24 and 34 weeks gestation.
- HbA1c at baseline, 24 and 34 weeks gestation
- Incidence of gestational hypertension/preeclampsia
- Caesarean section: pre-labour and intrapartum
- Gestational weight gain (randomization to 36 weeks)

Pre-pregnant and pregnant cohorts

- Area under the curve (AUC)
 - a. AUC for CGM glucose > 7.8 mmol/l
 - b. AUC for CGM glucose > 6.7 mmol/l

- c. AUC for CGM glucose < 3.5 mmol/L
- d. AUC for CGM glucose < 2.8 mmol/L
- Hypoglycemia
 - Episodes of 'severe hypoglycemia' requiring third party assistance
 - Mild-moderate episodes of hypoglycemia from CGM data <3.5 mmol/L (mild) and <2.8 mmol/L (moderate) for 20 min duration
 - Nocturnal hypoglycemia: CGM glucose <3.5 mmol/L (mild) and <2.8 mmol/L (moderate) for 20 min duration between 23.00–07:00 h
- Measures of glucose variability:
 - Mean amplitude of glycemic excursions
 - SD of CGM measurements
 - Mean absolute rate of change of CGM based on one week of sensor values
- Length of hospital stay associated with delivery
- Questionnaires
- Insulin requirements
- Safety outcome:

A substantial increase in hypoglycemia will be defined as >10 % increase in hypoglycemic episodes (<3.5 mmol/L for at least 20 min duration) over and above the HGM group.

Infant Outcomes.

- Birth weight:
 - Infant birth weight >90th centile using national growth curves
 - Infant birth weight >90th centile using customized centiles
 - Infant birth weight <10th centile, using national growth curves
 - Infant birth weight <10th centile using customized centiles
 - Infant birth weight ≥ 4 kg
- Pregnancy loss: miscarriage, stillbirth, neonatal death (death ≤ 28 days of life)
- Preterm birth (<37 weeks and early preterm <34 weeks)
- Birth injury
- Shoulder dystocia
- Neonatal hypoglycemia
- Hyperbilirubinemia
- Respiratory distress
- High level neonatal care > 24 h
- Cord blood gas pH < 7.0
- Hyperinsulinemia (using cord c-peptide)
- Composite fetal outcome: Pregnancy loss: miscarriage, stillbirth, neonatal death (death ≤ 28 days of life), birth injury, neonatal hypoglycemia, hyperbilirubinemia, respiratory distress, high level neonatal care > 24 h.

- Sum of skin-folds >90th percentile for gestational age – triceps, sub scapular, biceps and suprailiac skin-folds
- Anthropometric measures - infant birth weight, head circumference, chest circumference, abdominal circumference, left and right upper-arm circumference, crown-heel length, crown-rump length
- Length of hospital stay until first discharge home

Statistical analysis

Primary Outcome: The primary analysis will compare the treatment groups on the 24-week HbA1c for the pre-pregnant cohort and on the 34-week HbA1c for the pregnant cohort, controlling for baseline HbA1c in an analysis of covariance that includes the treatment modality (pump/MDI) and strata used in randomization as covariates. We will obtain point and interval estimates of the treatment effect (the mean adjusted difference in follow-up HbA1c between treated and control groups) and also test the null hypothesis that the treatment effect is zero. The primary analysis will follow the intention-to-treat principle with all participants analyzed in the group to which they were randomized, regardless of actual sensor wear. In the analysis of the pre-pregnant cohort, in women who become pregnant before 24 weeks, the final outcome will be a measurement of HbA1c taken post-confirmation of pregnancy. In the analysis of the pregnant cohort, in women who do not reach 34 weeks gestation, the last HbA1c taken prior to 34-weeks will be used for the primary outcome. If important covariates remain imbalanced between treatment groups despite the stratified randomization, these covariates will be added to the regression model and the difference between adjusted and unadjusted estimates will be examined to assess the impact of this imbalance. Multiple imputation using earlier HbA1c measurements will be used to deal with HbA1c values that are missing at the final assessment.

Sample size estimation

The trial will include 324 participants, with 110 in the pre-pregnant cohort (women planning pregnancy), and 214 in the pregnant cohort.

In both cohorts, the sample size is based on a clinically relevant difference in HbA1c of 0.5 %. For pregnant women, a cross-sectional standard deviation (SD) of 1.1 was used, as it is towards the upper limit of published HbA1c SD values ([9–11]). In pre-pregnant women, a SD value of 0.8 was used, based on reported SD values in a trial of CGM in young adults [12]. As this latter study also reported the SD of change over 26 weeks, it was possible to compute the correlation between repeated measurements. In the various study groups, these correlations ranged from 0.4 to 0.7. To be conservative, we used the lower value of 0.4 in our sample size calculations. In both cohorts (pre-pregnant and pregnant),

sample size was computed for an analysis of covariance with the final HbA1c as the outcome and baseline HbA1c and treatment group as predictors. Power was set at 90 % and the two-tailed significance level was set at 5 %.

Data management

The continuous glucose monitoring data management and analyses will be handled by the Jaeb Center for Health Research, Tampa, Florida. All other data and statistical aspects will be handled by the Clinical Trials Services/Centre for Mother, Infant and Child Research, Toronto, Ontario, and the trial statistician.

Trial steering committee

A trial steering committee will be responsible for the conduct of the trial. They will meet by teleconference on a quarterly basis to review the progress of the trial or on an ad hoc basis should the need arise.

Safety considerations

A Data Safety Monitoring Board (DSMB) will be established and will include experts in or representatives of the fields of endocrinology, obstetrics, epidemiology, and clinical trials methodology. They will meet after the initial safety analysis is completed, which will be done after 50 % of the pregnant group has been recruited. Serious unanticipated adverse events will be reported to the DSMB should the need arise.

Discussion

Implications of the findings

We aim to evaluate the impact of RT- CGM on glycemic control in two groups of women, those who are planning pregnancy and women in early pregnancy. If we find an improvement, the use of the RT-CGM will be encouraged and potentially reimbursed. We may also be able to determine if RT-CGM is more helpful in certain subsets of participants (e.g. those using pump or MDI), and whether the use of RT-CGM will affect maternal and neonatal outcomes. If we do not find that RT-CGM is beneficial, then other technologies such as closed-loop insulin delivery, may be indicated to facilitate optimal glycemic control in type 1 diabetes pregnancies.

Dissemination

A report will be written for the funding bodies and for peer-reviewed publication and will be disseminated to international lay and scientific audiences.

Conclusion

Results from studies in non-pregnant populations suggest that CGM improves glycemic control. Results from two randomized studies performed during pregnancy are

conflicting, one with and one without improved glycemic control. This is the first study to look at continuous use of RT- CGM both in women planning pregnancy and in women during early pregnancy. It will inform patients, caregivers, and funding agencies regarding the use of CGM in the pregnant woman with type 1 diabetes.

Additional file

Additional file 1: Ethics Review Boards That Approved CONCEPTT. (DOCX 18 kb)

Abbreviations

AUC, Area under the curve; DSMB, Data Safety Monitoring Board; HbA1c, Glycated haemoglobin; HGM, Home glucose monitoring; MDI, Multiple daily injections; RT-CGM, Real-time Continuous glucose monitoring; SD, Standard deviation

Acknowledgements

The authors would like to thank the Clinical Trials Services team in particular Jon Barrett, Keitha McMurray, and Tamara Birkenheier at the Centre for Mother, Infant and Child Research, Sunnybrook Research Institute, Toronto, Canada. We would also like to thank Olivia Lou and Marlon Pragnell of the JDRF for their invaluable advice. For assistance with the complex legal and contractual issues we sincerely thank Frances Farnworth Ipswich Hospital NHS Trust and Mary Kasanicki Cambridge University Hospitals NHS Foundation Trust.

CONCEPTT Collaborative Group:

Stephanie Amiel, Katharine Hunt, Louisa Green, Helen Rogers, Benedetta Rossi and, Ben Stodhart, **King's College Hospital, London, UK.** Matteo Bonomo, Federico Bertuzzi, Giuseppina D. Corica, Silvana Fazio, Roberto Giro, Elena Mion, Andrea Moletta, Basilio Pintaudi and Rosa Sorrentino, **Niguarda ca' Granda Hospital, Milano, Italy.** Rosa Corcoy, Ana Isabel Chico, M^a José Martínez, Mireia Sánchez, Diana Tundidor and, Alberto De Leiva, **Hospital de la Santa Creu i Sant Pau, Barcelona, Spain** & CIBER-BBN, **Zaragoza, Spain.** John Booth, Natalia McInnes, Adelle Nykamp, Rose Otto, Ada Smith, Irene Stanton and, Tracy Tazzeo, **McMaster University, Hamilton, Canada.** Lois Donovan, Carolyn Oldford, Catherine Young and Claire Gougeon **Alberta Health Services, University of Calgary, Calgary, Canada.** Denice Feig, Barbara Cleave, Diane Donat, Shital Gandhi and, Michelle Strom, **Mount Sinai Hospital, Toronto, Canada.** Robyn Houlden and, Adriana Breen **Kingston General Hospital, Queen's University, Kingston, Canada.** Kristin Castorino, **William Sansum Diabetes Center, Santa Barbara, USA.** Erin Keely, Heather Clark, Laura Gaudet, Alan Karovitch and, Janine Malcolm, **The Ottawa Hospital General Campus, Ottawa, Canada.** Julia Lowe and, Anna Rogowsky, **The Ottawa Hospital General Campus, Ottawa, Canada.** Ruth McManus, Anne Kudirka and, Margaret Watson, **St. Joseph's Health Centre, London, Canada.** Damian Morris, Frances Farnworth, Duncan Fowler, Sue Mitchell and, Josephine Rosier, **Ipswich Hospital NHS Trust, Ipswich, UK.** Helen Murphy, Caroline Byrne, Katy Davenport, Jeannie Grisoni, Sandra Mulrennan, Sandra Neoh, Esther O'Sullivan, David Simmons, Zoe Stewart, Heike Templin, **Cambridge University Hospitals NHS Foundation Trust, Cambridge, UK.** Helen Murphy, Jeremy Turner, Gioia Canciani, Niranjala (Nilu) Hewapathirana, Louise Jones, Leanne Piper, Rosemary Temple and, Tara Wallace, **Norfolk and Norwich University Hospital, Norwich, UK.** Rahat Maitland, Anita Banerjee, Annette Briley, Anna Brackenridge, Pam Gilby, Carolyn Gill, Anna Reid, Claire Singh and, Sara White, **Guys and St Thomas' NHS Foundation Trust, London, UK.** Maria Wolfs **St. Michael's Hospital, Toronto, Canada.** Eleanor Scott, Del Endersby, **Leeds Teaching Hospitals NHS Trust, Leeds, UK.** Michael Maresh, Gretta Kearney, Juliet Morris, Susan Quinn and, Prasanna Rao-Balakrishna, **Central Manchester University Hospitals NHS Foundation Trust, Manchester, UK.** Malcolm MacDougall, **Royal Victoria Infirmary, Newcastle Upon Tyne, Newcastle, UK.** Rudy Bilous, Mary Bilous, Shilpa Mahadissu, Deepika Menini and, Rasha Mukhtar, **South Tees Hospitals, NHS Foundation Trust, Middlesbrough, UK.** Richard Holt, Jane Forbes, Nicki Martin, and, Fiona Walbridge, **Southampton General Hospital, Southampton, UK.** Peter Mansell, Gayna Babington, George Bugg, Tasso Gazis, Nia Jones and, Dawn Spick, **Queen's Medical Centre, Nottingham, UK.** Simon Heller, Rebecca Bustani, Val Gordon, Priya Madhuvrata, Sue Hudson, Chloe Nisbet, Peter

Novodvorsky, Alexandra Solomon and, Karen Towse, **Sheffield Teaching Hospitals NHS Foundation Trust**, *Sheffield, UK*. Sam Philip, Anne Booth, Ann Cadzow, Martyna Chlost, Lynne Murray, Karen Norris and, Katrina Shearer, **Grampian Diabetes Centre**, *Aberdeen, UK*. Anna Dover, Frances Dougherty, Susan Johnston, Jill Little and, Liz McKay, **Royal Infirmary of Edinburgh**, *Edinburgh, UK*. Robert Lindsay, David Carty, Isobel Crawford, Fiona Mackenzie and, Therese McSorley, **Glasgow Royal Infirmary**, *Glasgow, UK*. Fidelma Dunne, Elizabeth Brosnan, Sharon Conway, Michelle Courcy Byrnes, Linda Duane, Niamh Duffy, Aoife Egan, Geraldine Gaffney, Grainne Higgins, Caroline Kelly, Collette Kirwan, Aaron Liew, Kevin Normoyle, Christina Roarty and, Mairead Waldron, **Galway University Hospitals**, *Galway, Ireland*. John Weisnagel, Christyne Allen, Martin D'Amours, Marie-Christine Dubé and, Valérie-Eve Julien, **Centre hospitalier universitaire de Québec**, *Quebec City, Canada*. Ariane Godbout, Sylvie Daigle, **Centre Hospitalier de Université de Montréal, Hôpital St. Luc**, *Montreal, Canada*. Thomas Ransom, Jill Coolen and Darlene Baxendale, **Izaak Walton Killam Health Sciences Centre (IWK)**, *Halifax, Canada*. Jill Newstead-Angel, **Royal University Hospital**, *Saskatoon, Canada*. Alexandra L. Soloman, Karen Gorton, Margaret Jackson, Kirsty Miller and, Julie Taylor, **The Dudley Group NHS FT, Russells Hall Hospital**, *Dudley, UK*. Sonya Mergler, Asma Qureshi, Adriana Rodriguez, Kathryn Mangoff, **The Centre for Mother, Infant and Child Research (CMICR)**, *Toronto, Canada*.

Funding

The trial is funded by JDRF grants #17-2011-533, and grants under the JDRF Canadian Clinical Trial Network (CCTN), a public-private partnership including JDRF and FedDev Ontario and supported by JDRF #80-2010-585. HRM conducts independent research supported by the National Institute for Health Research (Career Development Fellowship, CDF-2013-06-035). The views expressed in this publication are those of the authors and not necessarily those of the NHS, the National Institute for Health Research or the UK Department of Health.

Availability of data and material

CONCEPT has a data sharing policy. At the end of the trial, the original locked database will be retained at Mount Sinai hospital and copies will be shared with the Jaeb Centre for Health Research, Tampa, and Addensbrooke's Hospital, Cambridge. All inquiries should be addressed to the principal investigators, Dr Denise Feig or Dr Helen Murphy.

Authors' contributions

DSF and HRM co-wrote the first draft of the manuscript. GT wrote the statistical analysis plan with input from CK and KR for CGM data analysis. All authors contributed to the conception and/or development of the study and read and approved the final manuscript.

Competing interests

HRM sits on the Medtronic European Scientific Advisory Board. Medtronic have supplied the CGM sensors and CGM systems at reduced cost.

Consent for publication

Not applicable.

Ethics approval and consent to participate

This clinical study protocol was approved by the Mount Sinai Hospital Research Ethics Board (12-0037-A) as well as the individual ethics boards at each center in Canada, Spain, Italy, USA and Ireland. In the UK, the National Research Ethics Service approved the protocol on behalf of all UK sites (East of England 12/EE/0310). Please see the Additional file 1 for all ethics boards that approved the trial. Each participant signed a consent form prior to participating in the study.

Author details

¹Mt Sinai Hospital, Toronto, Ontario, Canada. ²Lunenfeld-Tanenbaum Research Institute, Toronto, Ontario, Canada. ³Department of Medicine, University of Toronto, Toronto, Canada. ⁴Sunnybrook Health Sciences Centre, Toronto, Ontario, Canada. ⁵Hospital de la Santa Creu i Sant Pau, Barcelona, Spain. ⁶CIBER-BBN, Zaragoza, Spain. ⁷University of Calgary, Calgary, Alberta, Canada. ⁸Helen Schneider Hospital for Women, Rabin Medical Center, Petah Tikva, Israel. ⁹30-1 Barranca Avenue, Santa Barbara, California, USA. ¹⁰The Ottawa Hospital, Riverside Campus, Ottawa, Ontario, Canada. ¹¹Jaeb Center For Health Research, Tampa, Florida, USA. ¹²St. Joseph Health Care London, London, Ontario, Canada. ¹³Sunnybrook Research Institute, Toronto, Ontario, Canada. ¹⁴University Health Network, Toronto General Hospital, Toronto,

Ontario, Canada. ¹⁵Institute of Metabolic Science, Cambridge University Hospitals NHS Foundation Trust, Cambridge, UK. ¹⁶Norwich Medical School, University of East Anglia, Norwich, UK. ¹⁷Department of Medicine, Leadership Sinai Centre for Diabetes, Mt Sinai Hospital, 60 Murray St. #5027, Toronto, Ontario M5T 3 L9, Canada.

Received: 26 November 2015 Accepted: 13 July 2016

Published online: 18 July 2016

References

1. Feig DS, Hwee J, Shah BR, Booth GL, Bierman AS, Lipscombe LL. Trends in incidence of diabetes in pregnancy and serious perinatal outcomes: a large, population-based study in Ontario, Canada, 1996-2010. *Diabetes Care*. 2014;37(6):1590-6.
2. Murphy HR, Roland JM, Skinner TC, Simmons D, Gurnell E, Morrish NJ, Soo SC, Kelly S, Lim B, Randall J, et al. Effectiveness of a Regional Prepregnancy Care Program in Women With Type 1 and Type 2 Diabetes: Benefits beyond glycemic control. *Diabetes Care*. 2010;33(12):2514-20.
3. Yogeve Y, Chen R, Ben-Haroush A, Phillip M, Jovanovic L, Hod M. Continuous glucose monitoring for the evaluation of gravid women with type 1 diabetes mellitus. *Obstet Gynecol*. 2003;101(4):633-8.
4. Murphy HR, Rayman G, Duffield K, Lewis KS, Kelly S, Johal B, Fowler D, Temple RC. Changes in the glycemic profiles of women with type 1 and type 2 diabetes during pregnancy. *Diabetes Care*. 2007;30(11):2785-91.
5. Pickup JC, Freeman SC, Sutton AJ. Glycaemic control in type 1 diabetes during real time continuous glucose monitoring compared with self monitoring of blood glucose: meta-analysis of randomised controlled trials using individual patient data. *BMJ*. 2011;343:d3805.
6. Murphy HR, Rayman G, Lewis K, Kelly S, Johal B, Duffield K, Fowler D, Campbell PJ, Temple RC. Effectiveness of continuous glucose monitoring in pregnant women with diabetes: randomised clinical trial. *BMJ*. 2008;337:a1680.
7. Secher AL, Ringholm L, Andersen HU, Damm P, Mathiesen ER. The Effect of Real-Time Continuous Glucose Monitoring in Pregnant Women With Diabetes: A randomized controlled trial. *Diabetes Care*. 2013;36(7):1877-83.
8. Moy FM, Ray A, Buckley BS. Techniques of monitoring blood glucose during pregnancy for women with pre-existing diabetes. *Cochrane Db Syst Rev*. 2014;4. doi:10.1002/14651858.CD009613.pub2.
9. Evers IM, de Valk HW, Mol BW, ter Braak EW, Visser GH. Macrosomia despite good glycaemic control in Type I diabetic pregnancy; results of a nationwide study in The Netherlands. *Diabetologia*. 2002;45(11):1484-9.
10. Chen R, Ben-Haroush A, Weissman-Brenner A, Melamed N, Hod M, Yogeve Y. Level of glycemic control and pregnancy outcome in type 1 diabetes: a comparison between multiple daily insulin injections and continuous subcutaneous insulin infusions. *Am J Obstet Gynecol*. 2007;197(4):404. e401-405.
11. Mathiesen ER, Kinsley B, Amiel SA, Heller S, McCance D, Duran S, Bellaire S, Raben A. Maternal glycemic control and hypoglycemia in type 1 diabetic pregnancy: a randomized trial of insulin aspart versus human insulin in 322 pregnant women. *Diabetes Care*. 2007;30(4):771-6.
12. Tamborlane WV, Beck RW, Bode BW, Buckingham B, Chase HP, Clemons R, Fiallo-Scharer R, Fox LA, Gilliam LK, Hirsch IB, et al. Continuous glucose monitoring and intensive treatment of type 1 diabetes. *N Engl J Med*. 2008;359(14):1464-76.

Submit your next manuscript to BioMed Central and we will help you at every step:

- We accept pre-submission inquiries
- Our selector tool helps you to find the most relevant journal
- We provide round the clock customer support
- Convenient online submission
- Thorough peer review
- Inclusion in PubMed and all major indexing services
- Maximum visibility for your research

Submit your manuscript at
www.biomedcentral.com/submit

