

Minerva Access is the Institutional Repository of The University of Melbourne

Author/s:

Britto, CD;Dyson, ZA;Duchene, S;Carter, MJ;Gurung, M;Kelly, DF;Murdoch, DR;Ansari, I;Thorson, S;Shrestha, S;Adhikari, N;Dougan, G;Holt, KE;Pollard, AJ

Title:

Laboratory and molecular surveillance of paediatric typhoidal Salmonella in Nepal: Antimicrobial resistance and implications for vaccine policy

Date:

2018-04-23

Citation:

Britto, C. D., Dyson, Z. A., Duchene, S., Carter, M. J., Gurung, M., Kelly, D. F., Murdoch, D. R., Ansari, I., Thorson, S., Shrestha, S., Adhikari, N., Dougan, G., Holt, K. E. & Pollard, A. J. (2018). Laboratory and molecular surveillance of paediatric typhoidal Salmonella in Nepal: Antimicrobial resistance and implications for vaccine policy. *Plos Neglected Tropical Diseases*, 12 (4), <https://doi.org/10.1371/journal.pntd.0006408>.

Persistent Link:

<https://hdl.handle.net/11343/254968>

License:

CC BY

RESEARCH ARTICLE

Laboratory and molecular surveillance of paediatric typhoidal *Salmonella* in Nepal: Antimicrobial resistance and implications for vaccine policy

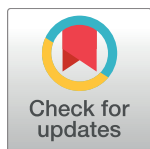
Carl D. Britto¹*, Zoe A. Dyson², Sebastian Duchene², Michael J. Carter¹, Meeru Gurung³, Dominic F. Kelly¹, David R. Murdoch⁴, Imran Ansari³, Stephen Thorson³, Shrijana Shrestha³, Neelam Adhikari³, Gordon Dougan⁵, Kathryn E. Holt²‡, Andrew J. Pollard¹‡

1 Oxford Vaccine Group, Department of Paediatrics, University of Oxford and the NIHR Oxford Biomedical Research Centre, Oxford, United Kingdom, **2** Department of Biochemistry and Molecular Biology, Bio21 Molecular Science and Biotechnology Institute, University of Melbourne, Parkville, Victoria, Australia, **3** Oxford University Clinical Research Unit-Patan Academy of Health Sciences, Patan, Nepal, **4** University of Otago, Christchurch, New Zealand, **5** Wellcome Trust Sanger Institute and the Department of Medicine, Cambridge University, Cambridge, United Kingdom

* These authors contributed equally to this work.

‡ KEH and AJP are joint senior authors

* carl.britto@paediatrics.ox.ac.uk



OPEN ACCESS

Citation: Britto CD, Dyson ZA, Duchene S, Carter MJ, Gurung M, Kelly DF, et al. (2018) Laboratory and molecular surveillance of paediatric typhoidal *Salmonella* in Nepal: Antimicrobial resistance and implications for vaccine policy. *PLoS Negl Trop Dis* 12(4): e0006408. <https://doi.org/10.1371/journal.pntd.0006408>

Editor: Edward T. Ryan, Massachusetts General Hospital, UNITED STATES

Received: January 19, 2018

Accepted: March 25, 2018

Published: April 23, 2018

Copyright: © 2018 Britto et al. This is an open access article distributed under the terms of the [Creative Commons Attribution License](https://creativecommons.org/licenses/by/4.0/), which permits unrestricted use, distribution, and reproduction in any medium, provided the original author and source are credited.

Data Availability Statement: All relevant data are within the paper and its Supporting Information files.

Funding: CDB is a Rhodes scholar, class of 2015 funded by the Rhodes trust. ZAD was supported by the Wellcome Trust of Great Britain (106158/Z/14/Z). SD was supported by a McKenzie Fellowship from the University of Melbourne. KEH was supported by the NHMRC of Australia (Fellowship #1061409). GD is supported by the NIHR

Abstract

Background

Children are substantially affected by enteric fever in most settings with a high burden of the disease, including Nepal. However pathogen population structure and transmission dynamics are poorly delineated in young children, the proposed target group for immunization programs. Here we present whole genome sequencing and antimicrobial susceptibility data on 198 *S. Typhi* and 66 *S. Paratyphi A* isolated from children aged 2 months to 15 years of age during blood culture surveillance at Patan Hospital, Nepal, 2008–2016.

Principal findings

S. Typhi was the dominant agent and comprised several distinct genotypes, dominated by 4.3.1 (H58). The heterogeneity of genotypes in children under five was reduced compared to data from 2005–2006, attributable to ongoing clonal expansion of H58. Most isolates (86%) were non-susceptible to fluoroquinolones, associated mainly with *S. Typhi* H58 lineage II and *S. Paratyphi A* harbouring mutations in the quinolone resistance-determining region (QRDR); non-susceptible strains from these groups accounted for 50% and 25% of all isolates. Multi-drug resistance (MDR) was rare (3.5% of *S. Typhi*, 0 *S. Paratyphi A*) and restricted to chromosomal insertions of resistance genes in H58 lineage I strains. Temporal analyses revealed a shift in dominance from H58 Lineage I to H58 Lineage II, with the latter being significantly more common after 2010. Comparison to global data sets showed the local *S. Typhi* and *S. Paratyphi A* strains had close genetic relatives in other South Asian

Cambridge, BRC and the Wellcome trust. AJP is funded the NIHR Oxford, BRC and Wellcome trust. The authors also wish to acknowledge the Gates foundation, which support enteric fever studies conducted by our group in Nepal. The sequencing of isolates in this study was funded by the Wellcome Trust Strategic Award: "A strategic vision to drive the control of enteric fever through vaccination" Strategic Award (106158/Z/14/Z). The funders had no role in study design, data collection and analysis, decision to publish, or preparation of the manuscript.

Competing interests: I have read the journal's policy and the authors of this manuscript have the following competing interests. AJP has previously conducted studies on behalf of Oxford University funded by vaccine manufacturers, but currently does not undertake industry funded clinical trials. AJP chairs the UK Department of Health's (DH) Joint Committee on Vaccination and Immunisation (JCVI) and is a member of the World Health Organisation Strategic Group of Experts (SAGE); the views expressed in this manuscript do not necessarily reflect the views of JCVI, DH or SAGE. The other authors have no conflicts of interest.

countries, indicating regional strain circulation. Multiple imports from India of ciprofloxacin-resistant H58 lineage II strains were identified, but these were rare and showed no evidence of clonal replacement of local *S. Typhi*.

Significance

These data indicate that enteric fever in Nepal continues to be a major public health issue with ongoing inter- and intra-country transmission, and highlights the need for regional coordination of intervention strategies. The absence of a *S. Paratyphi A* vaccine is cause for concern, given its prevalence as a fluoroquinolone resistant enteric fever agent in this setting.

Introduction

As in most developing countries, invasive bacterial infections account for a significant proportion of paediatric morbidity and mortality in Nepal[1,2]. Enteric fever, caused by *Salmonella enterica* serovars Typhi (*S. Typhi*) and Paratyphi A (*S. Paratyphi A*), is the most common cause of bloodstream infection in Nepal[1,2] and on a global scale causes an estimated 26 million cases of enteric fever annually of which a large proportion are in children[3,4]. In Nepal, it is estimated that 13% of febrile paediatric cases attending outpatient care are blood culture positive for *S. Typhi* or Paratyphi A[2]. Single nucleotide polymorphism (SNP) genotyping of *S. Typhi* isolated in a study of paediatric enteric fever cases at Patan Hospital in Kathmandu, Nepal during 2005 and 2006 suggested that, among children treated as inpatients, those aged ≤ 4 years were susceptible to a wider range of haplotypes due to immune naivety[5]. The most common genotype was H58 lineage II (70%), followed by H42 (19%)[5]. Another study of adults and children at Patan Hospital from 2005 to 2009 found that 26% of culture-positive cases were associated with *S. Paratyphi A*; the rest were caused by *S. Typhi*, mainly H58 lineage II (61%) or other H58 (3%), or H42 (15%)[6]. More recently, whole genome sequencing (WGS) was applied to study *S. Typhi* isolates collected during a randomized controlled trial of gatifloxacin vs ceftriaxone for treatment of blood culture confirmed enteric fever at Patan Hospital between 2011 and 2014, and found the H58 genotype continued to dominate the circulating *S. Typhi* population (83%)[7].

Multi-drug resistant (MDR) *S. Typhi*, defined as resistant to the first-line antibiotics ampicillin, chloramphenicol and co-trimoxazole, became common in the Indian subcontinent in the 1990s[8], driven by the spread of H58 carrying an IncHI1 plasmid harbouring a suite of antimicrobial resistance (AMR) genes[9]. These *S. Typhi* strains are still circulating in the region, including in India, Pakistan and Bangladesh. In this setting there is also evidence of migration of the MDR genes to the *S. Typhi* chromosome, and acquisition of resistance to fluoroquinolones and third-generation cephalosporins in MDR and non-MDR *S. Typhi* strain backgrounds, which further limits treatment options in the region[10]. However in Nepal, the MDR H58 *S. Typhi* appears to have been replaced by non-MDR H58 *S. Typhi* carrying the S83F mutation in *gyrA* and other mutations in the quinolone resistance determining region (QRDR) associated with reduced susceptibility to fluoroquinolones[5,6] and more recently the introduction of fluoroquinolone resistant H58 *S. Typhi* 'triple mutants' harbouring three QRDR mutations (*gyrA* S83F, *gyrA* D87V, and *parC* S80I), likely from India, resulting in failure of gatifloxacin treatment[7]. *S. Paratyphi A* in Nepal is generally not MDR, but frequently carries fluoroquinolone non-susceptibility alleles in *gyrA* and *parC*. [11–13]

Given the current treatment complexities of paediatric enteric fever, vaccination would seem the most feasible short-term strategy. There is no vaccine against *S. Paratyphi A*, which accounts for approximately a quarter of disease cases in Nepal. The Vi polysaccharide vaccine against *S. Typhi* is not effective in children under two years of age[14], and has therefore not been deployed as part of the national immunization schedule in Nepal and is only available privately. While the Vi conjugate vaccines have the potential to reduce the incidence of enteric fever in Nepal, the immunization approach and schedule needs to be clearly defined. This study sheds light on the age distribution of affected inpatient children at Patan Hospital, and the molecular structure and AMR determinants of circulating bacterial pathogen populations causing paediatric enteric fever from 2008 to 2016 in Nepal, with the view of informing preventive strategies including vaccine policy.

Methods

Ethics statement

Ethical approval was obtained from the Oxford Tropical Research Ethics Committee (OxTREC) as well as local institutional approval from the Nepal Health Research Council (R31579/CN007).

Study setting

Nepal is a low income[15], landlocked Himalayan nation with an under-five year old mortality rate of 35.8 per 1000 live births as of 2015[16]. Kathmandu Valley, the main urban centre of Nepal, has three districts and a population of 2.5 million[17] (average population density: 2,372/km²) of which 31% are between 0–14 years under age[18]. Over the course of the study, the Patan Academy of Health Sciences (PAHS) was one of only two large hospitals in Kathmandu Valley with referral and paediatric intensive care services. Patan Hospital accepts patients from all over the Valley. Annually the paediatric department cares for over 50,000 outpatients (21% of all hospital outpatient attendances) and accepts approximately 2,700 inpatient admissions. Only 10% of the patients reside outside Kathmandu Valley.

Surveillance of culture confirmed enteric fever amongst inpatients

Febrile children under 14 years of age, attending PAHS with clinical suspicion of invasive bacterial disease between January 2008 and December 2016 were included in an invasive bacterial disease database as described previously[19]. Inclusion criteria were: clinical presentation indicating an invasive bacterial infection requiring inpatient care with intravenous antibiotics. Blood culture was conducted as described below. Of the patients included in the database, all those that had blood cultures positive for *S. Typhi* or *S. Paratyphi A* were included in the present study, along with relevant demographic data. A total of 67/102 *S. Typhi* isolates and 17/27 *S. Paratyphi A* isolates from these patients had been stored, and were subjected to whole genome sequencing; these represent isolates associated with paediatric enteric fever presenting to the hospital, which may represent the more severe end of the spectrum of disease in the community.

Isolates collected from outpatients

Children with milder clinical presentations who are usually treated with oral antibiotics as outpatients were not included in the invasive bacterial disease database; however they are subjected to the same microbiological diagnostic procedures as inpatients (as detailed below). A total of 1283 *S. Typhi* and 926 *S. Paratyphi A* isolates from paediatric outpatients were stored

between 2008 and 2016; every 10th *S. Typhi* isolate and every 5th *S. Paratyphi A* isolate were included in this current study, representing isolates associated with milder presentation of paediatric enteric fever at the hospital.

Blood culture processing

Aerobic blood culture bottles were used to culture 3–5 mL of blood, which were then incubated in a BD Bactec FX 40 incubator at 37°C for a maximum of 5 days. Turbid samples were then inoculated directly onto MacConkey agar and incubated for maximum of 5 days at 37°C to identify potential *S. Typhi* and *S. Paratyphi A* colonies. Candidate *S. Typhi* and *S. Paratyphi A* isolates were further subjected to standard biochemical tests for additional confirmation [20].

Antimicrobial susceptibility testing

Antimicrobial susceptibility profiles were gauged by Kirby-Bauer disk diffusion tests. The CLSI (Clinical and Laboratory Standards Institute) guidelines were used to evaluate zones of inhibition for chloramphenicol, co-amoxiclav, co-trimoxazole, cefixime, ceftriaxone, azithromycin, nalidixic acid, and ciprofloxacin [21]. Isolates displaying sensitivity to the tested antimicrobials as per the cut-off values in the CLSI guidelines were designated as susceptible and those that were intermediate (I) or resistant (R) to the tested antimicrobials were designated as non-susceptible.

Genome sequencing and SNP analysis

Briefly, DNA was extracted using the Wizard Genomic DNA Extraction Kit (Promega, Wisconsin, USA), according to manufacturer's instructions. Genomic DNA was then subjected to indexed whole genome sequencing on an Illumina HiSeq 2500 platform at the Wellcome Trust Sanger Institute to generate paired-end reads of 100–150 bp in length.

For analysis of SNPs in *S. Typhi*, Illumina reads were mapped to the reference genome sequence of strain CT18 [22] (accession AL515582) using the RedDog (V1beta.10.3) mapping pipeline, available at <https://github.com/katholt/RedDog>. RedDog uses Bowtie (v2.2.9) [23] to map reads to the reference sequence; uses SAMtools (v1.3.1) [24] to identify SNPs with phred quality scores above 30; filters out those supported by <5 reads or with >2.5 times the average read depth (representing putative repeated sequences), or with ambiguous consensus base calls. For each SNP that passed these criteria in any one isolate, consensus base calls for the SNP locus were extracted from all genomes (ambiguous base calls and those with phred quality scores less than 20 were treated as unknowns and represented with a gap character). These SNPs were used to assign isolates to previously defined lineages according to an extended *S. Typhi* genotyping framework [25] (code available at <https://github.com/katholt/genotyphi>). For phylogenetic analyses, SNPs with confident homozygous allele calls (i.e. phred score >20) in >95% of the *S. Typhi* genomes (representing a 'soft' core genome of common *S. Typhi* sequences) were concatenated to produce an alignment of alleles at 233,527 variant sites. SNPs called in phage regions, repetitive sequences (354 kb; ~7.4% of bases in the CT18 reference chromosome, as defined previously) or in recombinant regions identified using Gubbins (v2.0.0) [26] were excluded, resulting in a final set of 2,187 SNPs identified in an alignment length of 4,809,037 bp for the 198 novel Nepali *S. Typhi* isolates. SNP alleles from *S. Paratyphi A* strain AKU_12601 [27] (accession FM200053) were also included as an outgroup to root the tree.

To provide regional context, genome data from: (i) a published study of mainly Nepali adults [7] (n = 95), (ii) a global *S. Typhi* genome collection [25] (n = 1,221); were subjected to

SNP calling and genotyping, resulting in an alignment of 12,216 SNPs for a total of 1,514 isolates. Details and accession numbers of sequence data included in our analysis have been included in **S1 & S2 Tables**. An additional analysis of all 261 H58 (genotype 4.3.1) from Nepal was carried out in the same manner, resulting in an alignment of 631 SNPs.

To characterize and analyse the genomes of the 66 *S. Paratyphi* A strains, a similar bioinformatic process was adopted using *S. Paratyphi* A AKU_12601[27] (accession no: FM200053) as the reference genome to create an alignment with another selected 176 isolates from previous studies[28–30], for global context resulting in an alignment of 5,277 SNPs in a total of 242 *S. Paratyphi* isolates, with alleles from *S. Typhi* CT18[22] (accession no: AL515582) included as an outgroup to root the tree.

Phylogenetic analysis

Maximum likelihood (ML) phylogenetic trees were inferred from SNP alignments using RAxML (v8.1.23)[31], with the generalized time-reversible model, a Gamma distribution to model site-specific rate variation (the GTR+ Γ substitution model; GTRGAMMA in RAxML), and 100 bootstrap pseudo-replicates to assess branch support. The resulting trees were visualized using Microreact[32] and the R package ggtree[33]. For visualization purposes, *S. Typhi* isolates representing ‘outbreaks’ (defined as members of the same monophyletic clade, isolated from the same study location in the same year) were manually thinned to a single representative.

Temporal analysis

To investigate the temporal signal and emergence dates of antimicrobial resistance determinants for Nepali *S. Typhi* 4.3.1, we used several methods. First, we used TempEst (v1.5)[34] to assess temporal structure (i.e. whether the data have clocklike behaviour) by conducting a regression of the root-to-tip branch distances of the Nepal H58/4.3.1 ML tree as a function of the sampling time, using the heuristic residual mean squared method with the best-fitting root selected. The resultant data were then visualized in R[35]. To estimate divergence times we analysed the sequence data in BEAST2 (v2.4.7)[36]. We used both constant-coalescent population size and Bayesian skyline tree priors, in combination with either a strict molecular clock model or a relaxed (uncorrelated lognormal distribution) clock model to identify the model that best fits the data. For the BEAST2 analysis the GTR+ Γ substitution model was selected, and the sampling times (tip dates) were defined as the year of isolation to calibrate the molecular clock. For all model and tree prior combinations, a chain length of 100,000,000 steps sampling every 5000 steps was used[37]. The relaxed (uncorrelated lognormal) clock model, which allows evolutionary rates to vary among branches of the tree together with the skyline demographic model, proved to be the best fit for the data. To assess the signal of these Bayesian estimates we conducted a date-randomization test whereby sampling times were assigned randomly to the sequences, and the analysis re-run 20 times[37,38]. These randomization tests were conducted with the same ‘best fit’ models (uncorrelated lognormal clock and skyline demographic). This test suggested that the data display ‘strong’ temporal structure[37].

For the final analysis reported here, 5 independent runs conducted with a chain length of 600,000,000 states, sampling every 300,000 iterations, were combined using LogCombiner (v2.4.7)[36] following removal of the first 10% of steps from each as burn-in. Maximum-clade credibility (MCC) trees were generated with ‘keep target heights’ specified for node heights using TreeAnnotator (v2.4.7)[36,39]. The effective sample sizes from the combined runs were estimated to be >200 for all reported parameters.

In silico resistance plasmid and AMR gene analysis

The mapping based allele typer SRST2[40] was used to detect plasmid replicons and acquired AMR genes and determine their precise alleles, by comparison to the ARG-Annot[41] and ResFinder[42] databases (for AMR genes) and PlasmidFinder[41] (for plasmid replicons). Where AMR genes were observed without evidence of a known resistance plasmid, raw read data was assembled *de novo* with SPAdes (v3.7.1)[43] and Unicycler (v0.3.0b)[44] and examined visually using the assembly graph viewer Bandage (0.8.1)[45] to inspect the composition and insertion sites of resistance-associated transposons. These putative transposon sequences were annotated using Prokka (v1.11)[45] followed by manual curation, and visualized using the R package *genoPlotR*[45]. SNPs in the QRDR of *gyrA*, *gyrB*, *parC* and *parE* genes, which are associated with reduced susceptibility to fluoroquinolones in *S. Typhi*, *S. Paratyphi A* and other species[7], were extracted from the whole genome SNP alignments.

Nucleotide sequence and read data accession numbers

Raw sequence data have been deposited in the European Nucleotide Archive under project PRJEB14050; and individual accession numbers are listed in **S1 and S2 Tables**. Genome assemblies for isolates RN2293 and RN2370 were deposited in GenBank.

Results

Paediatric enteric fever surveillance

Blood cultures were performed on 11,430 children with a suspected invasive bacterial infection and requiring inpatient care with intravenous antibiotics and supportive care. Of these, 129 had blood cultures positive for the enteric fever agents *S. Typhi* (n = 102, 79%) or *S. Paratyphi A* (n = 27, 21%). Relevant patient characteristics are reported in **Table 1**. Most cases of culture-confirmed enteric fever (n = 83, 64%) occurred between the hot and rainy months of May and October. However, a substantial proportion (36%) of cases also occurred in colder months, indicating perennial transmission. Children under 5 years of age accounted for 45% of the disease burden among inpatients, with children under 2 years of age accounting for 18% (**Table 1**). Clinical suspicion of enteric fever at presentation was significantly lower amongst children under 2 years with culture-confirmed infection (13% vs. 52%, p = 0.0005 using

Table 1. Hospital based (inpatient) paediatric enteric fever surveillance.

Total blood cultures performed	11430			
Total number of significant cultures	1048 (9.2%)			
Total number of enteric fever pathogens	129 (1.1%)			
<i>S. Typhi</i>	102 (0.9%)			
<i>S. Paratyphi A</i>	27 (0.2%)			
Age stratified characteristics of blood-culture positive enteric fever patients				
Age groups	<2 y	2–4 y	5–9 y	10–14 y
Number	23	35	39	31
Median age (years)	1.2	3.3	6.8	11.8
Male (%)	16 (70%)	23 (66%)	24 (62%)	18 (58%)
Median temperature at admission (C°) (range)	37.2 (36.7–38.9)	38.3 (36.5–39.9)	38.9 (36.1–40.5)	37.2 (36.5–39.2)
Median duration of admission (days) (range)	6 (2–23)	6.5 (1–19)	8 (2–36)	7.5 (3–20)
Enteric fever suspicion on admission (%)	3 (13%)	17 (49%)	19 (49%)	19 (61%)

<https://doi.org/10.1371/journal.pntd.0006408.t001>

Fisher's exact test; [Table 1](#)), highlighting the undifferentiated febrile nature of the disease even in an endemic setting such as Nepal.

Phylogenetic structure of paediatric isolates from Nepal

The genomes of *S. Typhi* isolated from inpatient surveillance ($n = 67$) and a random selection (every 10th isolate of *S. Typhi* and every 5th isolate of *S. Paratyphi A*) of isolates from outpatients ($n = 131$) were sequenced and subjected to SNP genotyping and phylogenomic analysis as described in **Methods**. The resulting phylogeny ([S1 Fig](#)) revealed the presence of 8 distinct genotypes, each corresponding to a different subclade including 2.0.0 ($N = 1, 0.5\%$) 2.2.0 ($N = 10, 5\%$), 2.3.4 ($N = 2, 1\%$), 3.2.2 ($N = 6, 3\%$), 3.3.0 ($N = 19, 9.6\%$), 3.3.1 ($N = 3, 1.5\%$), 4.1.0 ($N = 3, 1.5\%$), and 4.3.1 ($N = 154, 77.8\%$). There was no significant association between genotype and treatment status (outpatient vs. inpatient), clinical characteristics, period of isolation ([Fig 1A](#)) or patient age ([Fig 1B](#)).

To place the novel paediatric isolates in context, we constructed a whole genome phylogeny including other *S. Typhi* previously sequenced from adults in Nepal, and a global collection of *S. Typhi* ([Fig 2](#); an interactive version of the phylogeny and associated geographical data are also available for exploration online at <https://microreact.org/project/SJmU6dhlz>). The novel paediatric isolates clustered together with the adult isolates from Nepal, with no evidence of certain genotypes circulating in children more so than adults. In comparison to global isolates, Nepali isolates clustered with those from other regions in the Indian subcontinent, suggesting ongoing transmission within the region ([Fig 2](#)); indeed 14% of the novel Nepali paediatric isolates and 15% of the previously sequenced Nepali isolates were closest to an isolate from outside Nepal (majority from neighbouring India, Bangladesh or Pakistan), indicating frequent pathogen transfer within the region.

We used the same approach to investigate genome variation amongst 66 *S. Paratyphi A* isolated from inpatients ($n = 17$) and outpatients ($n = 49$) in Nepal, in the context of globally representative genome diversity ([Fig 3](#); interactive version available at <https://microreact.org/project/rk2ec5mWM>). The Nepali *S. Paratyphi A* population was far less diverse than that of *S. Typhi*; most belonged to lineage A and clustered into two distinct subgroups, which we designated sublineages A1 and A2 (see [Fig 3](#)). Akin to *S. Typhi*, the global context of *S. Paratyphi A* also revealed close clustering with isolates from other regions in the Indian subcontinent and China, which where *S. Paratyphi A* infections occur at high prevalence.

Antimicrobial resistance (AMR)

Amongst the paediatric isolates analysed in this study, most *S. Typhi* isolates (96%) and all *S. Paratyphi A* were susceptible to traditional first-line antibiotics co-trimoxazole, ampicillin and chloramphenicol ([Fig 4](#)). Most (86%) of *S. Typhi* and all the *S. Paratyphi A* of isolates were non-susceptible to the fluoroquinolone ciprofloxacin (assessed by disk diffusion; [Fig 4](#)). MDR was observed in six *S. Typhi* (3%) and no *S. Paratyphi A*. There were no differences in the frequency of MDR or fluoroquinolone non-susceptibility between the paediatric inpatients and outpatients (OR for MDR = 0.97, 95% CI 0.23–4.00; and OR for fluoroquinolone non-susceptibility = 1.23, 95% CI 0.62–2.44).

Genetic determinants of AMR detected in the paediatric isolates are summarized in [Table 2](#). All *S. Paratyphi A* (besides the single lineage C4 isolate) carried the *gyrA* S83F mutation responsible for nalidixic acid resistance and fluoroquinolone non-susceptibility. *S. Typhi* isolates displaying fluoroquinolone non-susceptibility harboured known QRDR SNPs ([Table 2](#)); these included isolates of genotypes 4.3.1 (*gyrA* SNPs), 3.3.0 (*parE* SNPs), and 3.3.1 (*gyrA* and *parE* SNPs, see [S1 Fig](#)). Sixteen *S. Typhi* isolates (all genotype 4.3.1) were QRDR

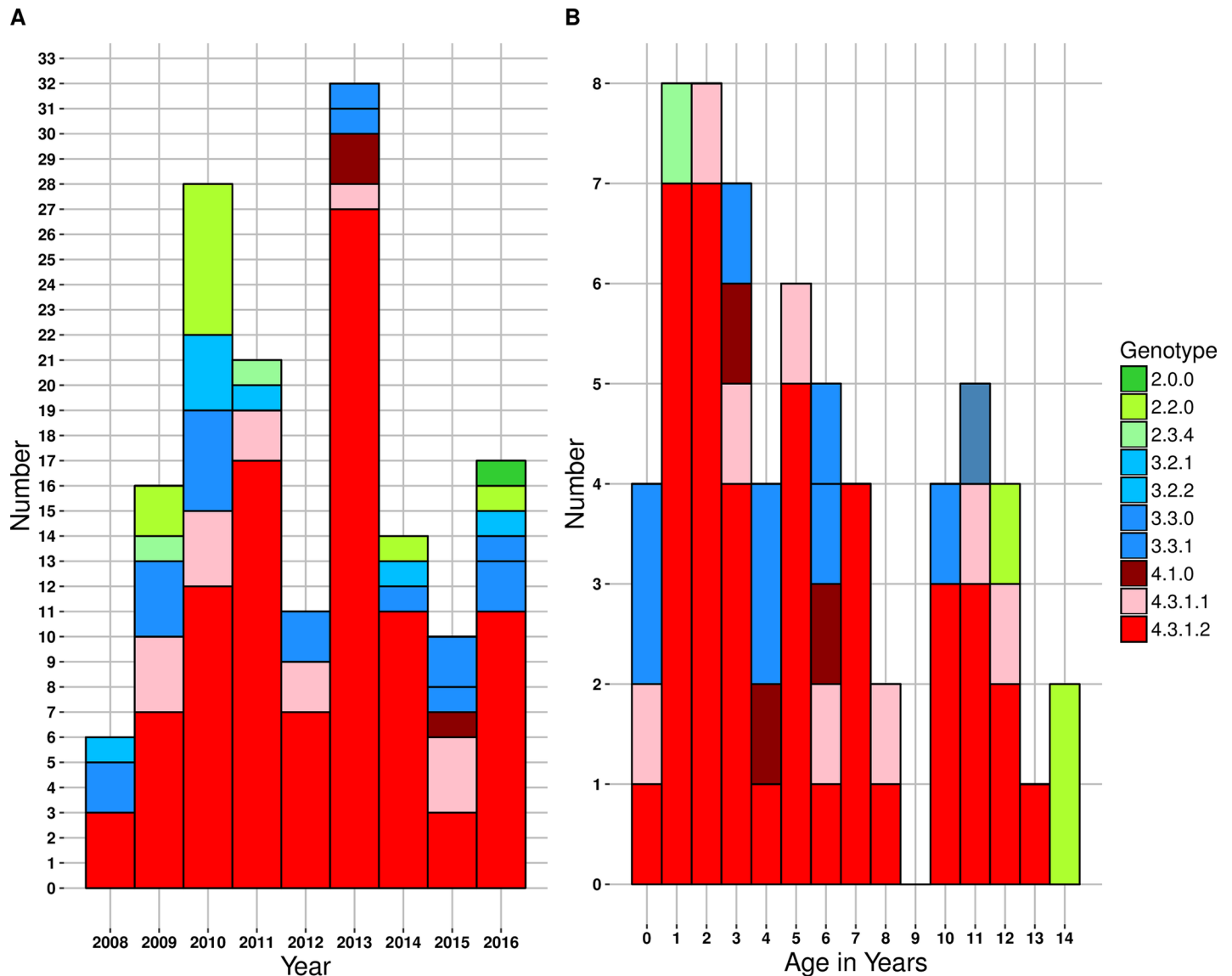


Fig 1. Nepal paediatric *S. Typhi* genotypes. (A) Genotypes observed per annum. (B) Genotypes observed per age in years. Individual *S. Typhi* genotypes are coloured as described in the inset legend.

<https://doi.org/10.1371/journal.pntd.0006408.g001>

‘triple mutants’, which are associated with failure to respond to fluoroquinolone therapy[7]. All MDR isolates (n = 6) belonged to *S. Typhi* genotype 4.3.1 and harboured the acquired AMR genes *catA*, *dfrA7*, *sul1*, *sul2*, *strA*, *strB* and *bla_{TEM-1}*, conferring resistance to chloramphenicol, co-trimoxazole, streptomycin and ampicillin. An additional genotype 4.3.1 isolate carried a subset of four of these genes (*sul2*, *strA*, *strAB* and *bla_{TEM-1}*) and displayed resistance to ampicillin but was sensitive to co-trimoxazole and chloramphenicol (consistent with the lack of *dfr* and *cat* genes). Acquired AMR genes were not detected amongst the *S. Paratyphi A*.

The full suite of seven acquired AMR genes are common amongst *S. Typhi* globally and are typically located within a composite transposon, comprising Tn6029 (*sul2*, *strA*, *strAB* and *bla_{TEM-1}*) and Tn21 (*dfrA7*, *sul1*) inserted within Tn9 (*catA*), which is most often carried on IncHI1 plasmids[9]. Here, all MDR isolates carried this typical composite transposon, inserted in the chromosome between genes STY3618 and STY3619 and associated with an 8 bp target

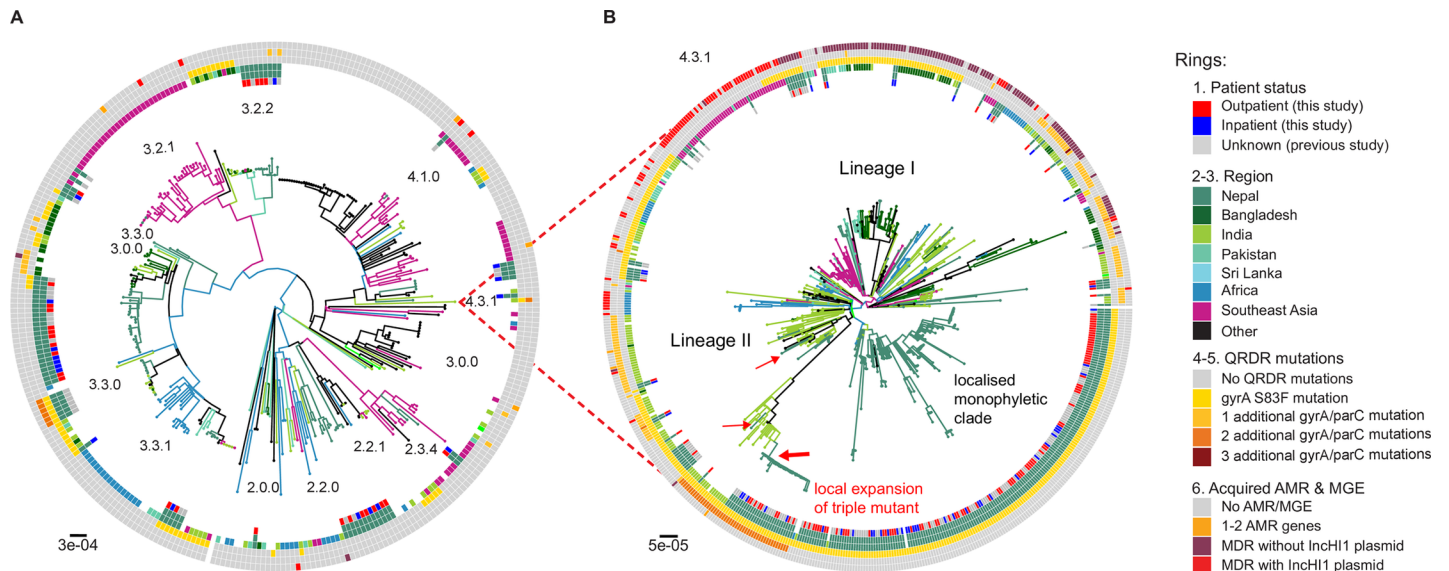


Fig 2. Global population structure of Nepalese *S. Typhi* genotypes. (A) Global population structure of Non-H58 (4.3.1) Nepalese genotypes. (B) Global population structure of H58 (4.3.1). Inner ring shows patient status. Branch colours indicate country/region of origin, as do the second ring and third rings from the inside. Fourth ring from the inside indicates QRDR *gyrA* S83F mutation. Fifth ring from the inside indicates the number of additional *gyrA* and *parC* QRDR mutations. Outer ring describes the presence of MDR. All rings and branches are coloured as per the inset legend. Branch lengths are indicative of the estimated number of substitutions rate per variable site, and the tree was outgroup rooted with a *S. Paratyphi* A strain AKU_12601.

<https://doi.org/10.1371/journal.pntd.0006408.g002>

site duplication (GGTTTAGA), consistent with integration mediated by the flanking IS1 transposases of Tn9 (see Fig 5). The additional ampicillin resistant isolate carried only transposon Tn6029, which was inserted directly into the chromosomal pseudogene *slrP* and associated with an 8 bp target site duplication (TAGCTGAT), consistent with integration mediated by the flanking IS26 transposases of Tn6029.

Evolutionary history of AMR *S. Typhi* 4.3.1 in Nepal

We constructed a dated phylogeny of all available *S. Typhi* 4.3.1 from Nepal, using BEAST2 (Fig 6, interactive version available at <https://microreact.org/project/rJnfyOGxG>). This analysis yielded a local substitution rate of 0.8 SNPs per genome per year (95% highest posterior density (HPD), 0.5–1.1) or 1.7×10^{-7} genome-wide substitutions per site per year (95% HPD, 1.1×10^{-7} – 2.4×10^{-7}). The data showed strong temporal structure to support these results (see Methods and S2 Fig), which were consistent with previous estimates for global *S. Typhi* 4.3.1 [10]. We estimated the most recent common ancestor (mrca) for all *S. Typhi* 4.3.1 in Nepal existed circa 1993, similar to the mrca estimated globally for *S. Typhi* 4.3.1, which is predicted to have emerged in neighbouring India [10].

Both of the previously described sublineages of *S. Typhi* 4.3.1 (I and II) were present amongst the Nepali isolates, however (i) lineage II was far more common (67% vs. 10% of paediatric isolates from this study; 68% vs 10% of isolates from other studies); and (ii) the lineages were associated with different AMR patterns (Fig 6): lineage I was associated with MDR (59% of lineage I vs 0 lineage II, $p < 1 \times 10^{-15}$), while lineage II was associated with QRDR mutations (99% of lineage II vs 50% of lineage I, $p < 1 \times 10^{-15}$). The majority of isolates formed a local monophyletic clade that was not detected in other countries in the global collection, indicative of local clonal expansion in Nepal. The relative proportion of local *S. Typhi* infections caused by lineage II increased after 2010 (40% pre-2010 vs 74% from 2011 onwards, $p = 1 \times 10^{-7}$),

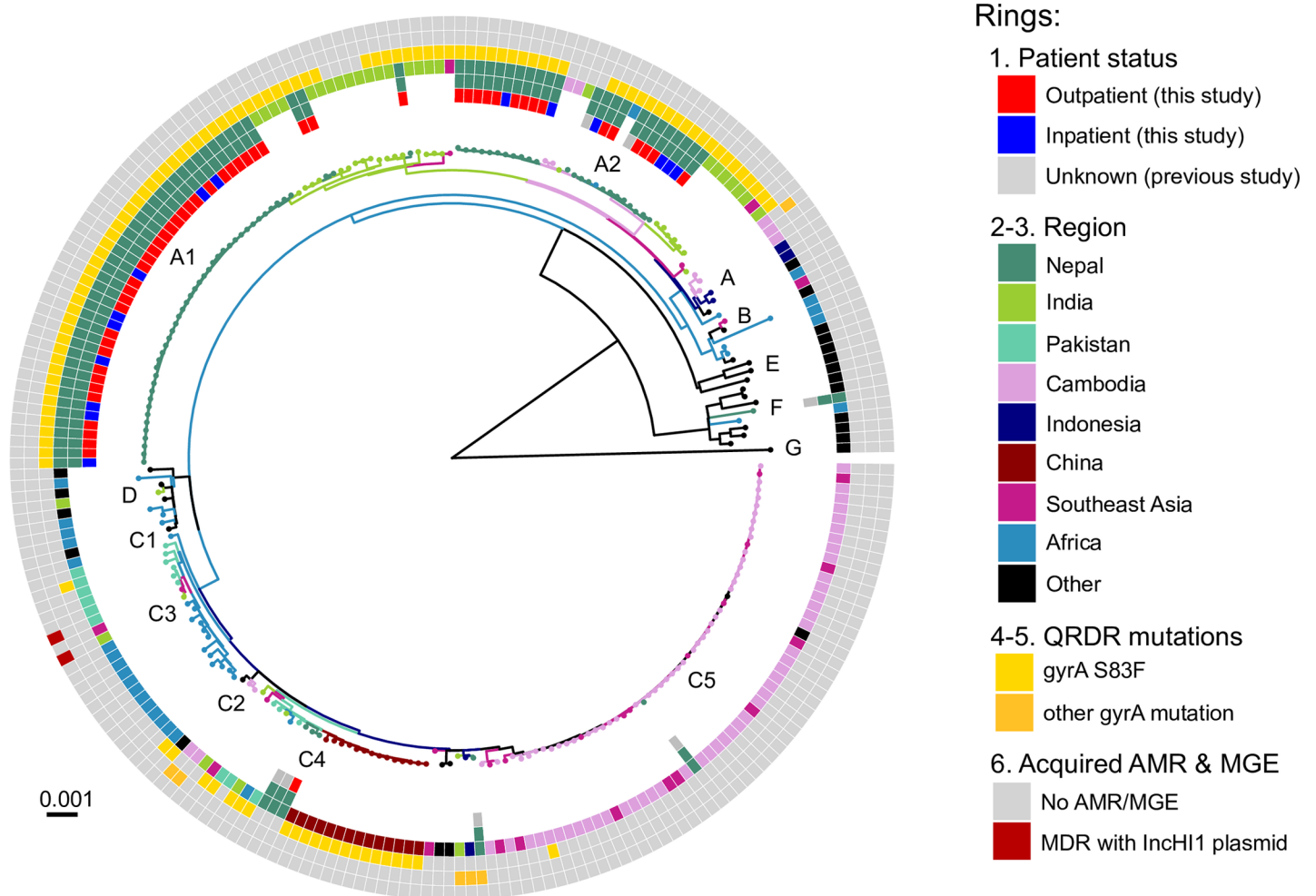


Fig 3. Global population structure of *S. Paratyphi A*. Inner ring indicates patient status. Branch colours indicate country/region of origin, as do the second and third rings from the inside. Fourth ring from the inside indicates QRDR *gyrA* S83F mutation. Fifth ring from the inside indicates the number of additional *gyrA* and *parC* QRDR mutations. Outer ring describes the presence of MDR. All rings and branches are.

<https://doi.org/10.1371/journal.pntd.0006408.g003>

suggesting clonal replacement of the MDR-associated lineage I with the expansion of the quinolone resistance-associated Lineage II over time.

Most of the ciprofloxacin resistant triple mutant isolates harboured *gyrA* S83F, *gyrA* D87N, and *parC* S80I and formed a monophyletic subclade of lineage II, together with those previously reported as associated with gatifloxacin failure during the treatment trial in 2013–2014 [7]. We dated the mrca of this subclade to 2008 (95% HPD, 1998–2011; see Fig 6), and comparison to the global tree confirmed it most likely originated in India [7] and was introduced to Nepal at least twice (see Fig 2B). We also identified a distinct ciprofloxacin resistant triple mutant (harbouring *gyrA* S83F, *gyrA* D87G, and *parC* E84G) that was isolated from a five-year old girl in 2011. This was also *S. Typhi* 4.3.1 lineage II but shared no particularly close relatives in the Nepali or global collections (Fig 2B, Fig 6).

All isolates with acquired AMR genes belonged to Lineage I: one cluster of IncHI1 plasmid-containing isolates (from a previous study conducted by Thanh et al 2016) with a mean tmrca of 2004 (95% HPD, 1996–2007); two related clusters with the composite transposon inserted in the chromosome after STY3618, with mean tmrca 2001 (95% HPD, 1995–2009); and one

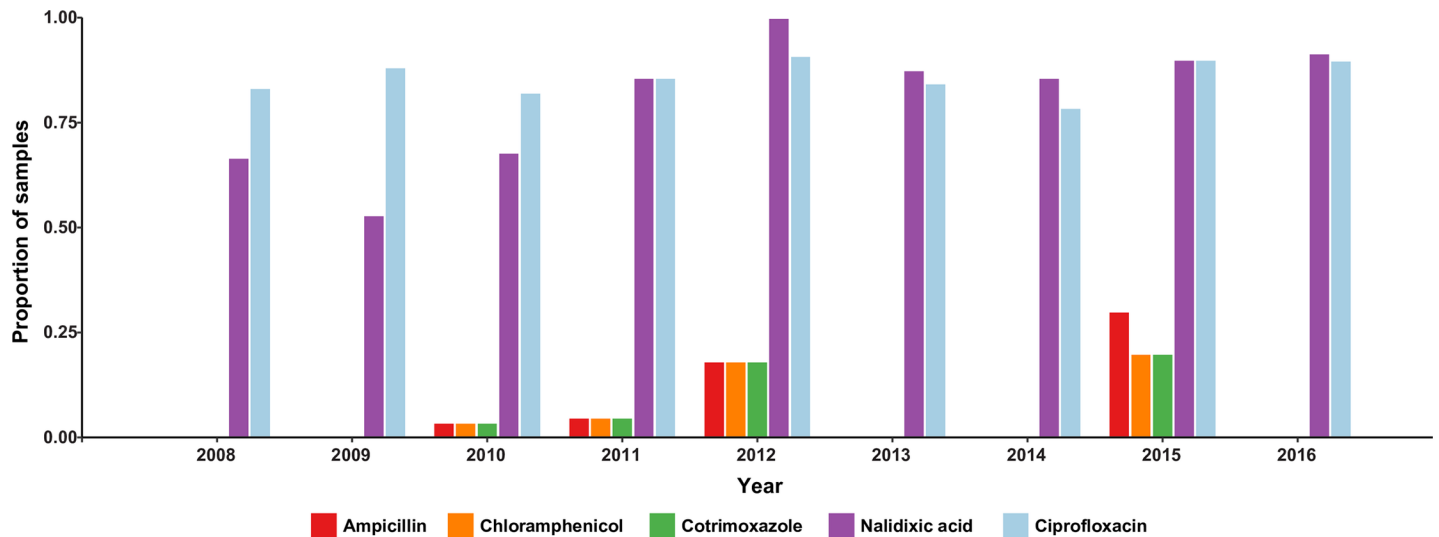


Fig 4. Bars are coloured as described in the inset legend. Susceptibility to Ampicillin, Chloramphenicol, Ciprofloxacin, Cotrimoxazole, Nalidixic acid, Cephalosporin, Ceftriaxone, Cefixime, and Azithromycin were tested. No resistance to Azithromycin, Ceftriaxone, and Cefixime was observed.

<https://doi.org/10.1371/journal.pntd.0006408.g004>

cluster with Tn6029 inserted in the chromosome, with mean tmrca 2003 (95% HPD, 1997–2010) (see Fig 6).

Discussion

These data show that enteric fever is a significant cause of illness amongst children in this study (Table 1), the majority of which (86%) is non-susceptible to fluoroquinolones (Table 2). Genomic analysis revealed substantial diversity within the local pathogen population (Figs 1 & S1), with evidence of transfer of *S. Typhi* and *S. Paratyphi A* between Nepal and neighbouring countries in South Asia (Figs 2 and 3), and intermingling of isolates from adults and children consistent with transmission across age groups (Fig 2). Data from 2005–2006 suggested that

Table 2. Genetic determinants of antimicrobial resistance in paediatric isolates from Nepal.

	<i>S. Typhi</i>	<i>S. Paratyphi A</i>
Total isolates	198	66
QRDR	164 (82.8%)	65 (98%)
<i>gyrA</i> S83F	143 (72%)	65 (98%)
<i>gyrA</i> S83F only	15 (7.6%)	0
<i>gyrA</i> S83F, <i>gyrA</i> D87N	16 (8.1%)	0
<i>gyrA</i> S83F, <i>gyrA</i> D87N, <i>parC</i> S80I	15 (7.6%)	0
<i>gyrA</i> S83F, <i>gyrA</i> D87N, <i>parC</i> E84G	1 (0.5%)	0
<i>gyrA</i> S83F, <i>parC</i> E84G	1 (0.5%)	0
<i>gyrA</i> S83F, <i>parE</i> A364V	5 (2.5%)	0
<i>gyrA</i> S83Y only	6 (3%)	0
<i>parE</i> A364V only	15 (7.6%)	0
Acquired AMR genes	7 (3.5%)	0
<i>bla</i> TEM-1, <i>strAB</i> , <i>sul2</i>	1 (0.5%)	0
<i>catA1</i> , <i>dfrA7</i> , <i>sul1</i> , <i>bla</i> TEM-1, <i>strAB</i> , <i>sul2</i> (+ <i>gyrA</i> S83F)	4 (2%)	0
<i>catA1</i> , <i>dfrA7</i> , <i>sul1</i> , <i>bla</i> TEM-1, <i>strAB</i> , <i>sul2</i> (+ <i>gyrA</i> S83Y)	2 (1%)	0

<https://doi.org/10.1371/journal.pntd.0006408.t002>

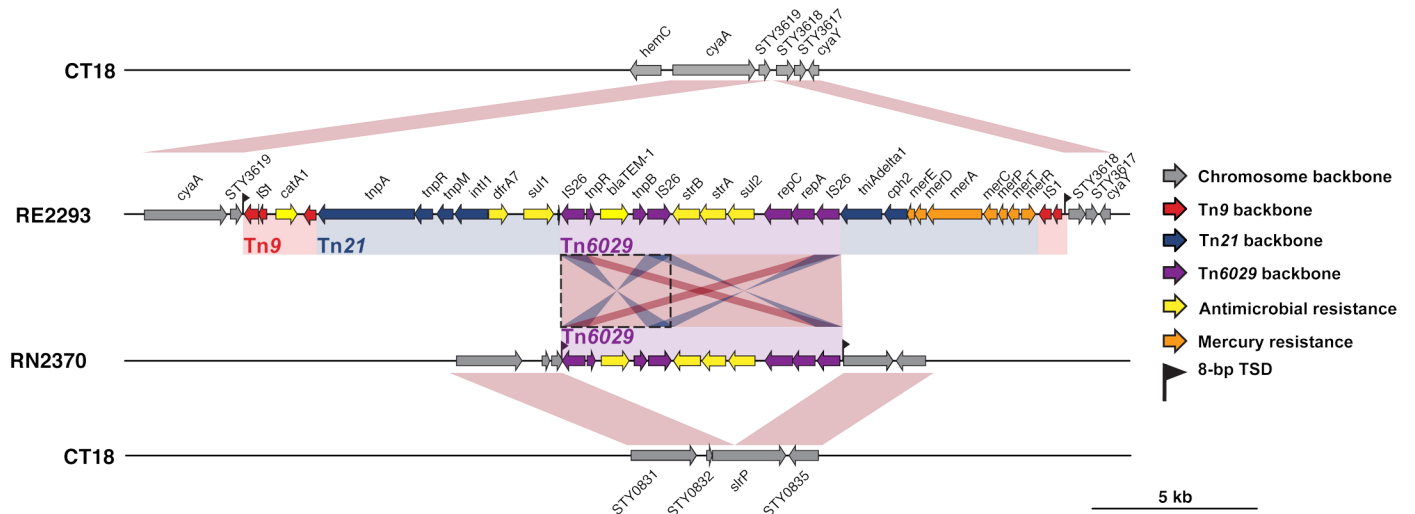


Fig 5. Insertion sites of transposons observed in *S. Typhi* from Nepal. Genes and transposons are indicated according to the inset legend. TSD indicates target site duplication, and *Tn* indicates transposon.

<https://doi.org/10.1371/journal.pntd.0006408.g005>

younger children were more susceptible to a wider range of genotypes, a phenomenon attributed to a naïve immune response[5]. A decade later this tendency seems to have shifted towards a more pathogen attributable trend as seen in Fig 1, which shows the *S. Typhi* 4.3.1 genotype is dominant regardless of the age and admission status of the host. This is consistent with recent mathematical modelling of historical enteric fever patterns in this setting, which identified the introduction of AMR 4.3.1, as well as an increase in migration of immunologically naïve 15–25 year olds from outside the Kathmandu Valley, as key drivers of the local typhoid problem[46].

The high frequency of fluoroquinolone non-susceptibility is attributable to indiscriminate and uncontrolled use of antimicrobials, which since the turn of the century have been used to treat a range of infections common in the tropics in addition to enteric fever. Fluoroquinolone non-susceptibility has been observed locally[7], associated with mutations in *gyrA* and *parC*. Our data show that the problem of fluoroquinolone non-susceptible enteric fever in Nepali children is mainly driven by two locally established pathogen variants, namely *S. Typhi* 4.3.1 (H58) lineage II harbouring the *gyrA*-S83F mutation (accounting for 50% of all enteric fever, 57% of non-susceptible cases, and 66% of all *S. Typhi*) and *S. Paratyphi* A clade A harbouring the *gyrA*-S83F mutation (accounting for 25% of enteric fever, 28% of non-susceptible cases, and 98% of all *S. Paratyphi* A). These strains have been present since the increase in local case numbers began in 1997, and their arrival likely contributed to the increased disease burden[46]. The universal fluoroquinolone resistance demonstrated by the *S. Paratyphi* A population is of great concern particularly since a vaccine against paratyphoid fever is still in development.

Notably, the fully fluoroquinolone resistant triple mutant *S. Typhi* strain that was first detected in local adults in 2013 and halted the gatifloxacin treatment trial was still causing in disease in Nepali children in 2015–2016, but was rare (2.5% of cases in 2015–16) and showed no signs of displacing the wider population that carries only the *gyrA*-S83F mutation (65% of cases in 2015–16). This lack of clonal replacement is consistent with the presence of a single, distinct, triple mutant *S. Typhi* strain isolated from a 5-year old girl in 2011, which had no descendant strains detected amongst the 126 cases examined from 2012–16, suggesting it has not spread within the local human population. The lack of fully resistant *S. Paratyphi* A is also

Fig 6. BEAST2 maximum-clade credibility phylogenetic tree of Nepalese genotype 4.3.1 (H58) *S. Typhi*. Tips colours indicate outpatient (red) vs. inpatient (blue) isolates. Acquisitions of molecular determinants of resistance are labelled.

<https://doi.org/10.1371/journal.pntd.0006408.g006>

notable. It has been shown that the *gyrA*-S83F mutation is not associated with a fitness cost in *S. Typhi* and can be maintained in the absence of direct selection from fluoroquinolones; however our data suggest the same is not true of the triple mutants, hence limiting exposure to fluoroquinolones may at least control the spread of highly resistant strains.

Acquired resistance to other antimicrobials was rare, and in the paediatric population was associated only with *S. Typhi* 4.3.1 lineage I strains carrying chromosomally integrated AMR genes (Fig 6). This has not been reported previously in the local population, where MDR *S. Typhi* has typically been associated with plasmids[47]. Here we identified at least two distinct AMR gene integration events, that we estimate occurred contemporaneously with the MDR plasmid circulating in the early 2000s (Fig 6). Although similar findings have also been reported from *S. Typhi* strains in other neighbouring countries of India and Bangladesh[10], this is the first description in strains from Nepal. Notably, in addition to the integration of the typical *S. Typhi* MDR composite transposon mediated by *IS1* transposase genes of Tn9, we identified for the first time direct integration of Tn6029 into the *S. Typhi* chromosome (Fig 5), mediated by *IS26* and conferring ampicillin resistance in the absence of resistance to chloramphenicol or co-trimoxazole.

The findings of this study supplement our understanding of enteric fever in an endemic setting. The occurrence of disease in the <5 years population is in agreement with the other multi-centre data from South Asia, underscoring the importance of understanding the disease transmission dynamics and preventive strategies in the vulnerable population. The magnitude of disease occurrence in this age group is still an underestimation for several reasons; clinical suspicion of enteric fever in this age group is generally low as evidenced in these data and this trend has also been reported in other endemic regions[48]. The lack of clinical suspicion leads to a lack of diagnostic testing, which is in itself, fraught with impediments to reliable results. Blood culture, which is the feasible gold standard diagnostic performs poorly in this population owing to the difficulty in obtaining the required amount of blood and due to pre-treatment with antimicrobials prior to obtaining a blood sample. Despite the unique challenges associated with diagnosing enteric fever in this population and the supposed lack of exposure, reports from various endemic regions continue to reiterate the enormous burden of enteric fever in pre-school children. Coupled with the problem of antimicrobial non-susceptibility once a diagnosis is made, these difficulties highlight the urgent need for enteric fever vaccines in children under 5. However vaccination options for these children are limited due to the poor immunogenicity of the Vi polysaccharide vaccine in infants and the difficulty in administering the Ty21a vaccine. Until the Vi conjugate vaccines are rolled out, in addition to improving sanitation and providing clean water, antimicrobial treatment remains the only short-term option for containing the disease in this age group.

Cephalosporins are currently the first-line treatment for enteric fever in Nepal. We did not detect any cephalosporin non-susceptibility in these isolates, however it is anticipated that this will emerge via the acquisition of plasmid-encoded extended-spectrum beta-lactamase genes, as has recently been observed among *S. Typhi* isolates from neighbouring India and Pakistan[49–52]. Given the re-emergence of antimicrobial sensitivity to chloramphenicol and co-trimoxazole as evidenced in this study, it may be logical to shift to these first-line drugs for treating enteric fever; indeed there has already been a case report demonstrating efficacy of co-trimoxazole treatment in the treatment of fluoroquinolone resistant H58 *S. Typhi* in this setting[53]. We acknowledge the possibility that typhoidal *Salmonella* strains will acquire

resistance to these antibiotics when re-introduced and the cycling of antimicrobials is seldom sufficient to effectively prevent MDR in the long-term. However we propose this short-term strategy might be commissioned until the typhoid conjugate vaccines are deployed, in order to conserve cephalosporins and macrolides for the treatment of other tropical infections which require higher-end antibiotics.

Our study has limitations as all isolates examined were from a single hospital based passive surveillance programme and thus may not be representative of the disease trends in the wider community. For inpatient isolates only stored samples were available (67 out of 102 for *S. Typhi* and 17 out of 27 for *S. Paratyphi A*) for retrospective sequencing analysis, preventing the use of a more formal random sampling technique; however we consider this is unlikely to introduce sampling bias with respect to genotype, as genotypes were not known at the time of storage and there is no reason to suspect particular genotypes would be more likely to have been stored. Consistent with this expectation, the population structure observed here is comparable to that observed in previous studies suggesting that our opportunistic sampling is reasonably representative of the population structure of paediatric typhoid in Nepal from 2008–2016. Outpatient isolates were randomly sampled and expected to be representative, but these were unable to be stratified by age, gender and admission information as outpatient data was limited and did not include any patient level information.

Conclusion

These data highlight the burden of enteric fever in children in Nepal while demonstrating the importance of laboratory and molecular surveillance in endemic regions. Those under the age of 5 years contributed most to the burden of enteric fever among inpatients who represent the severe spectrum of disease. The substantial contribution of those less than 2 years emphasize the urgent need for the Vi conjugate vaccine in regions such as Nepal where antimicrobial therapy is currently the main modality against enteric fever. Antimicrobial non-susceptibility continues to complicate management protocols and calls for prudent strategies aimed at conserving the currently effective drugs while buying time for vaccine deployment. Finally, the control of enteric fever in Nepal and South Asia requires a coordinated strategy given the inter-country transmission that occurs with the Indian subcontinent. The Vi conjugate vaccines offer the real possibility of controlling enteric fever but eradication will only become a possibility when the immunization strategy is supplemented by the provision of clean water and improved sanitation.

Supporting information

S1 Fig. Population structure of paediatric *S. Typhi* in Nepal. Paratyphi A outgroup rooted maximum likelihood phylogeny. Branch colours indicate the genotype (as labelled). Branch lengths are indicative of the estimated number of substitution rate per variable site. The adjacent heatmap shows the presence of AMR genes (yellow) and QRDR mutations (green) present in each isolate as described in the inset legend.

(TIF)

S2 Fig. Temporal analysis of Nepalese H58 (4.3.1). (A) Tempest regression of root-to-tip distance as (in the SNP alignment) a function of sampling time, with the root of the tree selected using heuristic residual mean squared (each point represents a tip of the maximum likelihood tree). The slope is a crude estimate of the substitution rate for the SNP alignment, the x-intercept corresponds to the age of the root node, and the R^2 is a measure of clocklike behaviour (B) Date randomisation test with the left most box plot showing the posterior substitution rate

estimate from the SNP alignment of the data with the correct sampling times, and the remaining 20 boxplots showing the posterior distributions of the rate from replicate runs using randomised dates. The data are considered to have strong temporal structure if the estimate with the correct sampling times does not overlap with those from the randomisations.

(TIF)

S3 Fig. Direct comparison of *S. Typhi* genotype diversity detected in this study compared to an earlier study of children at the same hospital (Holt et al, 2010; ref 5), stratified by age group. Simpson's diversity of *S. Typhi* genotypes is printed on each plot.

(TIF)

S1 Table. Characteristics *S. Typhi* isolates reported in this study.

(XLSX)

S2 Table. Characteristics *S. Paratyphi* isolates reported in this study.

(XLSX)

Author Contributions

Conceptualization: Carl D. Britto, Dominic F. Kelly, Kathryn E. Holt, Andrew J. Pollard.

Data curation: Carl D. Britto, Zoe A. Dyson, Michael J. Carter, Meeru Gurung, David R. Murdoch, Imran Ansari, Stephen Thorson, Shrijana Shrestha, Neelam Adhikari, Andrew J. Pollard.

Formal analysis: Carl D. Britto, Zoe A. Dyson, Sebastian Duchene, Kathryn E. Holt.

Funding acquisition: Gordon Dougan, Kathryn E. Holt, Andrew J. Pollard.

Investigation: Carl D. Britto.

Methodology: Carl D. Britto, Zoe A. Dyson, Sebastian Duchene, Dominic F. Kelly, Kathryn E. Holt.

Project administration: Carl D. Britto, Meeru Gurung, David R. Murdoch, Imran Ansari, Stephen Thorson, Shrijana Shrestha, Neelam Adhikari, Andrew J. Pollard.

Supervision: Imran Ansari, Kathryn E. Holt, Andrew J. Pollard.

Validation: Carl D. Britto, Zoe A. Dyson, Kathryn E. Holt, Andrew J. Pollard.

Visualization: Zoe A. Dyson, Kathryn E. Holt.

Writing – original draft: Carl D. Britto, Kathryn E. Holt, Andrew J. Pollard.

Writing – review & editing: Carl D. Britto, Zoe A. Dyson, Sebastian Duchene, Michael J. Carter, David R. Murdoch, Stephen Thorson, Gordon Dougan, Kathryn E. Holt, Andrew J. Pollard.

References

1. Kelly DF, Thorson S, Maskey M, Sandeep M, Umesh S, Hamaluba M, et al. The burden of vaccine-preventable invasive bacterial infections and pneumonia in children admitted to hospital in urban Nepal. *Int J Infect Dis.* 2011; 15: e17–e23. <http://dx.doi.org/10.1016/j.ijid.2010.05.021> <https://doi.org/10.1016/j.ijid.2010.05.021> PMID: 21123100
2. Pradhan R, Shrestha U, Gautam SC, Thorson S, Shrestha K, Yadav BK, et al. Bloodstream Infection among Children Presenting to a General Hospital Outpatient Clinic in Urban Nepal. *PLoS One.* 2012; 7. <https://doi.org/10.1371/journal.pone.0047531> PMID: 23115652

3. Buckle GC, Walker CLF, Black RE. Typhoid fever and paratyphoid fever: Systematic review to estimate global morbidity and mortality for 2010. *J Glob Health*. 2012; 2: 10401. <https://doi.org/10.7189/jogh.02.010401> PMID: 23198130
4. Azmatullah A, Qamar FN. Systematic review of the global epidemiology, clinical and laboratory profile of enteric fever. *J Glob Health*. 2015; 5.
5. Holt KE, Baker S, Dongol S, Basnyat B, Adhikari N, Thorson S, et al. High-throughput bacterial SNP typing identifies distinct clusters of *Salmonella* Typhi causing typhoid in Nepalese children. *BMC Infect Dis*. 2010; 10: 144. <https://doi.org/10.1186/1471-2334-10-144> PMID: 20509974
6. Baker S, Holt KE, Clements ACA, Karkey A, Ariyal A, Boni MF, et al. Combined high-resolution genotyping and geospatial analysis reveals modes of endemic urban typhoid fever transmission. *Open Biol. Royal Society Journals*; 2011; 1: 110008. <https://doi.org/10.1098/rsob.110008> PMID: 22645647
7. Thanh DP, Karkey A, Dongol S, Thi NH, Thompson CN, Rabaa MA, et al. A novel ciprofloxacin-resistant subclade of H58. *Salmonella typhi* is associated with fluoroquinolone treatment failure. *Elife*. 2016; 5: 1–13. <https://doi.org/10.7554/eLife.14003> PMID: 26974227
8. Ugboko H, De N. Mechanisms of Antibiotic resistance in *Salmonella typhi*. *IntJCurrMicrobiolAppSci*. 2014; 3: 461–476.
9. Holt KE, Phan MD, Baker S, Duy PT, Nga TVT, Nair S, et al. Emergence of a globally dominant inchi1 plasmid type associated with multiple drug resistant typhoid. *PLoS Negl Trop Dis*. 2011; 5. <https://doi.org/10.1371/journal.pntd.0001245> PMID: 21811646
10. Wong VK, Baker S, Pickard DJ, Parkhill J, Page AJ, Feasey NA, et al. Phylogeographical analysis of the dominant multidrug-resistant H58 clade of *Salmonella* Typhi identifies inter- and intracontinental transmission events. *Nat Genet*. 2015; 47.
11. Chau TT, Campbell JI, Galindo CM, Van Minh Hoang N, Diep TS, Nga TTT, et al. Antimicrobial drug resistance of *Salmonella enterica* serovar typhi in asia and molecular mechanism of reduced susceptibility to the fluoroquinolones. *Antimicrob Agents Chemother*. American Society for Microbiology; 2007; 51: 4315–23. <https://doi.org/10.1128/AAC.00294-07> PMID: 17908946
12. Wu W, Wang H, Lu J, Wu J, Chen M, Xu Y, et al. Genetic Diversity of *Salmonella enterica* serovar Typhi and Paratyphi in Shenzhen, China from 2002 through 2007. *BMC Microbiol*. BioMed Central; 2010; 10: 32. <https://doi.org/10.1186/1471-2180-10-32> PMID: 20113512
13. Bharat P, Tuladhar NR. Multidrug-resistant and extended-spectrum beta-lactamase (ESBL)-producing *Salmonella enterica* (serotypes Typhi and Paratyphi A) from blood isolates in Nepal: surveillance of resistance and a search for newer alternatives. *Int J Infect Dis*. Elsevier; 2006; 10: 434–438. <https://doi.org/10.1016/j.ijid.2006.07.001> PMID: 16978898
14. Date KA, Bentsi-Enchill A, Marks F, Fox K. Typhoid fever vaccination strategies. *Vaccine*. 2015; 33: C55–C61. <https://doi.org/10.1016/j.vaccine.2015.04.028> PMID: 25902360
15. World Bank. datahelpdesk.worldbank.org. In: Available:<https://datahelpdesk.worldbank.org/knowledgebase/articles/906519-world-bank-country-and-lending-groups>.
16. Available at. UNICEF. In: <https://data.unicef.org/topic/child-survival/under-five-mortality/>.
17. World Bank. Available at. In: <http://www.worldbank.org/en/news/feature/2013/04/01/managing-nepals-urban-transition>.
18. IndexMundi. Nepal Age Structure. IndexMundi.com. 2013.
19. Williams EJ, Thorson S, Maskey M, Mahat S, Hamaluba M, Dongol S, et al. Hospital-based surveillance of invasive pneumococcal disease among young children in urban Nepal. *Clin Infect Dis*. 2009; 48. <https://doi.org/10.1086/596488> PMID: 19191606
20. Services M. UK Standards for Microbiology Investigations. *Bacteriology*. 2015;B 55: 1–21. ID 7
21. Matuschek E, Brown DFJ, Kahlmeter G. Development of the EUCAST disk diffusion antimicrobial susceptibility testing method and its implementation in routine microbiology laboratories. *Clin Microbiol Infect*. 2014; 20. <https://doi.org/10.1111/1469-0691.12373> PMID: 24131428
22. Parkhill J, Dougan G, James KD, Thomson NR, Pickard D, Wain J, et al. Complete genome sequence of a multiple drug resistant *Salmonella enterica* serovar Typhi CT18. *Nature*. 2001; 413: 848–52. <https://doi.org/10.1038/35101607> PMID: 11677608
23. Langmead BSS. Fast gapped-read alignment with Bowtie 2. *Nat Commun*. 2012; 9: 357–359.
24. Li H, Handsaker B, Wysoker A, Fennell T, Ruan J, Homer N, et al. The Sequence Alignment/Map format and SAMtools. *Bioinformatics*. 2009; 25: 2078–2079. <https://doi.org/10.1093/bioinformatics/btp352> PMID: 19505943
25. Wong VK, Baker S, Connor TR, Pickard D, Page AJ, Dave J, et al. An extended genotyping framework for *Salmonella enterica* serovar Typhi, the cause of human typhoid. *Nat Commun*. 2016; 1–11. <https://doi.org/10.1038/ncomms12827> PMID: 27703135

26. Croucher NJ, Page AJ, Connor TR, Delaney AJ, Keane JA, Bentley SD, et al. Rapid phylogenetic analysis of large samples of recombinant bacterial whole genome sequences using Gubbins. *Nucleic Acids Res.* Oxford University Press; 2015; 43: e15–e15. <https://doi.org/10.1093/nar/gku1196> PMID: 25414349
27. Holt K, Thomson E, Wain N.R, Langridge J., Hasan G.C, Bhutta R, Quail Z.A, Norbertczak MA, Walker H., Simmonds D, White M, Bason B, Mungall N, Dougan K, G Parkhill J. *Salmonella enterica* subsp. *enterica* serovar Paratyphi A str. AKU_12601 complete genome, strain AKU_12601. In: *Bioinformatics* [Internet]. 15 Aug 2009 [cited 11 Aug 2017] pp. 2078–2079. <https://doi.org/10.1093/bioinformatics/btp352>
28. Zhou Z, McCann A, Weill F- X, Blin C, Nair S, Wain J, et al. Transient Darwinian selection in *Salmonella enterica* serovar Paratyphi A during 450 years of global spread of enteric fever. *Proc Natl Acad Sci U S A.* National Academy of Sciences; 2014; 111: 12199–204. <https://doi.org/10.1073/pnas.1411012111> PMID: 25092320
29. Yan M, Yang B, Wang Z, Wang S, Zhang X, Zhou Y, et al. A Large-Scale Community-Based Outbreak of Paratyphoid Fever Caused by Hospital-Derived Transmission in Southern China. Ryan ET, editor. *PLoS Negl Trop Dis.* Public Library of Science; 2015; 9: e0003859. <https://doi.org/10.1371/journal.pntd.0003859> PMID: 26186586
30. Kuijpers LMF, Le Hello S, Fawal N, Fabre L, Tourdjman M, Dufour M, et al. Genomic analysis of *Salmonella enterica* serotype Paratyphi A during an outbreak in Cambodia, 2013–2015. *Microb genomics.* Microbiology Society; 2016; 2: e000092. 10.1099/mgen.0.000092
31. Stamatakis A. RAxML-VI-HPC: maximum likelihood-based phylogenetic analyses with thousands of taxa and mixed models. *Bioinformatics.* England; 2006; 22: 2688–2690. <https://doi.org/10.1093/bioinformatics/btl446> PMID: 16928733
32. Argimón S, Abudahab K, Goater RJE, Fedosejev A, Bhai J, Glasner C, et al. Microreact: visualizing and sharing data for genomic epidemiology and phylogeography. *Microb genomics.* Microbiology Society; 2016; 2: e000093. <https://doi.org/10.1099/mgen.0.000093> PMID: 28348833
33. Yu G, Smith DK, Zhu H, Guan Y, Lam TT-Y. ggtree: an R package for visualization and annotation of phylogenetic trees with their covariates and other associated data. McInerney G, editor. *Methods Ecol Evol.* 2017; 8: 28–36. <https://doi.org/10.1111/2041-210X.12628>
34. Rambaut A, Lam TT, Max Carvalho L, Pybus OG. Exploring the temporal structure of heterochronous sequences using TempEst (formerly Path-O-Gen). *Virus Evol.* Oxford University Press; 2016; 2: vew007. <https://doi.org/10.1093/ve/vew007> PMID: 27774300
35. Core Team R. A language and environment for statistical computing. R Found Stat Comput Vienna, Austria.
36. Bouckaert R, Heled J, Kühnert D, Vaughan T, Wu C-H, Xie D, et al. BEAST 2: A Software Platform for Bayesian Evolutionary Analysis. Pric A, editor. *PLoS Comput Biol.* Public Library of Science; 2014; 10: e1003537. <https://doi.org/10.1371/journal.pcbi.1003537> PMID: 24722319
37. Duchêne S, Holt KE, Weill F- X, Le Hello S, Hawkey J, Edwards DJ, et al. Genome-scale rates of evolutionary change in bacteria. <https://doi.org/10.1099/mgen.0.000094> PMID: 28348834
38. Firth C, Kitchen A, Shapiro B, Suchard MA, Holmes EC, Rambaut A. Using Time-Structured Data to Estimate Evolutionary Rates of Double-Stranded DNA Viruses. <https://doi.org/10.1093/molbev/msq088> PMID: 20363828
39. Luo X, Zhao B. A Statistical Tree Annotator and Its Applications. 2011; 1230–1238.
40. Inouye M, Dashnow H, Raven L, Schultz MB, Pope BJ, Tomita T, et al. SRST2: Rapid genomic surveillance for public health and hospital microbiology labs. 2014; 1–16.
41. Gupta SK, Padmanabhan BR, Diene SM, Lopez-Rojas R, Kempf M, Landraud L, et al. ARG-ANNOT, a new bioinformatic tool to discover antibiotic resistance genes in bacterial genomes. *Antimicrob Agents Chemother.* American Society for Microbiology (ASM); 2014; 58: 212–20. <https://doi.org/10.1128/AAC.01310-13> PMID: 24145532
42. Zankari E, Hasman H, Cosentino S, Vestergaard M, Rasmussen S, Lund O, et al. Identification of acquired antimicrobial resistance genes. <https://doi.org/10.1093/jac/dks261> PMID: 22782487
43. Bankevich A, Nurk S, Antipov D, Gurevich AA, Dvorkin M, Kulikov AS, et al. SPAdes: A New Genome Assembly Algorithm and Its Applications to Single-Cell Sequencing. <https://doi.org/10.1089/cmb.2012.0021> PMID: 22506599
44. Wick RR, Judd LM, Gorrie CL, Holt KE. Unicycler: Resolving bacterial genome assemblies from short and long sequencing reads. <https://doi.org/10.1371/journal.pcbi.1005595> PMID: 28594827
45. Wick RR, Schultz MB, Zobel J, Holt KE. Bandage: interactive visualization of de novo genome assemblies. <https://doi.org/10.1093/bioinformatics/btv383> PMID: 26099265
46. Saad NJ, Bowles CC, Grenfell BT, Basnyat B, Arjyal A, Dongol S, et al. The impact of migration and antimicrobial resistance on the transmission dynamics of typhoid fever in Kathmandu, Nepal: A

- mathematical modelling study. *PLoS Negl Trop Dis*. 2017; 11. <https://doi.org/10.1371/journal.pntd.0005547> PMID: 28475605
47. Tamang MD, Oh JY, Seol SY, Kang HY, Lee JC, Lee YC, et al. Emergence of multidrug-resistant *Salmonella enterica* serovar Typhi associated with a class 1 integron carrying the *dfrA7* gene cassette in Nepal. *Int J Antimicrob Agents*. Elsevier; 2007; 30: 330–5. <https://doi.org/10.1016/j.ijantimicag.2007.05.009> PMID: 17629465
 48. Britto C, Pollard AJ, Voysey M, Blohmke CJ. An Appraisal of the Clinical Features of Pediatric Enteric Fever: Systematic Review and Meta-analysis of the Age-Stratified Disease Occurrence. *Clin Infect Dis*. 2017; <https://doi.org/10.1093/cid/cix229> PMID: 28369224
 49. Rodrigues C, Kapil A, Sharma A, Ragupathi N, Inbabathan F, Veeraraghavan B, et al. Whole-Genome Shotgun Sequencing of Cephalosporin-Resistant *Salmonella enterica* Serovar Typhi. *Genome Announc*. 2017; 5: e01639–16. <https://doi.org/10.1128/genomeA.01639-16> PMID: 28280021
 50. Qamar FN, Saleem K, Shakoor S, Yousufzai T, Kazi M, Lohana H, et al. Proceedings of 10th International Conference on Typhoid and other Invasive Salmonellosis. Kampala, Uganda; 2017. p. 40.
 51. Munir T, Lodhi M, Ansari JK, Andleeb S, Ahmed M. Extended Spectrum Beta Lactamase producing Cephalosporin resistant *Salmonella* Typhi, reported from Rawalpindi, Pakistan. *J Pak Med Assoc*. 2016; 66: 1035–6. PMID: 27524545
 52. Devanga Ragupathi NK, Muthuirulandi Sethuvel DP, Shankar BA, Munusamy E, Anandan S, Veeraraghavan B. Draft genome sequence of blaTEM-1-mediated cephalosporin-resistant *Salmonella enterica* serovar Typhi from bloodstream infection. *J Glob Antimicrob Resist*. 2016; 7: 11–12. <https://doi.org/10.1016/j.jgar.2016.06.003> PMID: 27530999
 53. Karki M, Pandit S, Baker S, Basnyat B. Cotrimoxazole treats fluoroquinolone-resistant *Salmonella typhi* H58 infection. *BMJ Case Rep*. England; 2016;2016. <https://doi.org/10.1136/bcr-2016-217223> PMID: 27797841