



Minerva Access is the Institutional Repository of The University of Melbourne

Author/s:

Edmans, MD;Connelley, TK;Jayaraman, S;Vrettou, C;Vordermeier, M;Mak, JYW;Liu, L;Fairlie, DP;Maze, EA;Chrun, T;Klenerman, P;Eckle, SBG;Tchilian, E;Benedictus, L

Title:

Identification and Phenotype of MAIT Cells in Cattle and Their Response to Bacterial Infections

Date:

2021-03-11

Citation:

Edmans, M. D., Connelley, T. K., Jayaraman, S., Vrettou, C., Vordermeier, M., Mak, J. Y. W., Liu, L., Fairlie, D. P., Maze, E. A., Chrun, T., Klenerman, P., Eckle, S. B. G., Tchilian, E. & Benedictus, L. (2021). Identification and Phenotype of MAIT Cells in Cattle and Their Response to Bacterial Infections. *Frontiers in Immunology*, 12, <https://doi.org/10.3389/fimmu.2021.627173>.

Persistent Link:

<https://hdl.handle.net/11343/277921>

License:

[CC BY](#)



Identification and Phenotype of MAIT Cells in Cattle and Their Response to Bacterial Infections

Matthew D. Edmans^{1,2*}, Timothy K. Connelley³, Siddharth Jayaraman³, Christina Vrettou³, Martin Vordermeier^{4,5}, Jeffrey Y. W. Mak^{6,7}, Ligong Liu^{6,7,8}, David P. Fairlie^{6,7,8}, Emmanuel Atangana Maze¹, Tiphany Chrun¹, Paul Klenerman^{2†}, Sidonia B. G. Eckle^{9†}, Elma Tchilian^{1†} and Lindert Benedictus^{3,10†}

OPEN ACCESS

Edited by:

Laurel J. Gershwin,
University of California, Davis,
United States

Reviewed by:

Gregers Jungersen,
Statens Serum Institute, Denmark
Eva-Stina Isabella Edholm,
Arctic University of Norway, Norway

*Correspondence:

Matthew D. Edmans
matthew.edmans@ndm.ox.ac.uk
Lindert Benedictus
L.Benedictus1@uu.nl

†These authors have contributed
equally to this work

Specialty section:

This article was submitted to
Comparative Immunology,
a section of the journal
Frontiers in Immunology

Received: 08 November 2020

Accepted: 17 February 2021

Published: 11 March 2021

Citation:

Edmans MD, Connelley TK, Jayaraman S, Vrettou C, Vordermeier M, Mak JYW, Liu L, Fairlie DP, Maze EA, Chrun T, Klenerman P, Eckle SBG, Tchilian E and Benedictus L (2021) Identification and Phenotype of MAIT Cells in Cattle and Their Response to Bacterial Infections. *Front. Immunol.* 12:627173. doi: 10.3389/fimmu.2021.627173

¹ Department of Enhanced Host Responses, The Pirbright Institute, Pirbright, United Kingdom, ² Peter Medawar Building for Pathogen Research, University of Oxford, Oxford, United Kingdom, ³ Division of Infection and Immunity, The Roslin Institute, The University of Edinburgh, Easter Bush, Roslin, United Kingdom, ⁴ Animal and Plant Health Agency, Weybridge, United Kingdom, ⁵ Centre for Bovine Tuberculosis, Institute for Biological, Environmental and Rural Sciences, University of Aberystwyth, Aberystwyth, United Kingdom, ⁶ Division of Chemistry and Structural Biology, Institute for Molecular Bioscience, The University of Queensland, Brisbane, QLD, Australia, ⁷ Australian Research Council Centre of Excellence in Advanced Molecular Imaging, The University of Queensland, Brisbane, QLD, Australia, ⁸ Centre of Inflammation and Disease Research, Institute for Molecular Bioscience, The University of Queensland, Brisbane, QLD, Australia, ⁹ Department of Microbiology and Immunology, Peter Doherty Institute for Infection and Immunity, The University of Melbourne, Melbourne, VIC, Australia, ¹⁰ Department of Population Health Sciences, Faculty of Veterinary Medicine, Utrecht University, Utrecht, Netherlands

Mucosal-associated invariant T (MAIT) cells are a population of innate-like T cells that utilize a semi-invariant T cell receptor (TCR) α chain and are restricted by the highly conserved antigen presenting molecule MR1. MR1 presents microbial riboflavin biosynthesis derived metabolites produced by bacteria and fungi. Consistent with their ability to sense ligands derived from bacterial sources, MAIT cells have been associated with the immune response to a variety of bacterial infections, such as *Mycobacterium spp.*, *Salmonella spp.* and *Escherichia coli*. To date, MAIT cells have been studied in humans, non-human primates and mice. However, they have only been putatively identified in cattle by PCR based methods; no phenotypic or functional analyses have been performed. Here, we identified a MAIT cell population in cattle utilizing MR1 tetramers and high-throughput TCR sequencing. Phenotypic analysis of cattle MAIT cells revealed features highly analogous to those of MAIT cells in humans and mice, including expression of an orthologous TRAV1-TRAJ33 TCR α chain, an effector memory phenotype irrespective of tissue localization, and expression of the transcription factors PLZF and EOMES. We determined the frequency of MAIT cells in peripheral blood and multiple tissues, finding that cattle MAIT cells are enriched in mucosal tissues as well as in the mesenteric lymph node. Cattle MAIT cells were responsive to stimulation by 5-OP-RU and riboflavin biosynthesis competent bacteria *in vitro*. Furthermore, MAIT cells in milk increased in frequency in cows with mastitis. Following challenge with virulent *Mycobacterium bovis*, a causative agent of bovine tuberculosis and a zoonosis, peripheral blood MAIT cells expressed higher levels of perforin. Thus, MAIT cells are implicated in the immune response to two major bacterial infections in cattle. These data

suggest that MAIT cells are functionally highly conserved and that cattle are an excellent large animal model to study the role of MAIT cells in important zoonotic infections.

Keywords: mucosal-associated invariant T cells, cattle, T cell receptor, unconventional T cell, mastitis, bovine tuberculosis, MR1 tetramer

INTRODUCTION

Mucosal-associated invariant T (MAIT) cells represent the largest α/β T cell population specific for a single antigen in humans, comprising up to 10% of all T cells in the periphery and 50% in the liver (1–4). Unlike conventional α/β T cells that recognize peptides presented by MHC class I (MHC-I) or MHC class II (MHC-II) molecules, MAIT cells recognize microbial riboflavin biosynthesis derived metabolites presented by a monomorphic MHC-I like molecule, MHC related protein 1 (MR1) (5–7). To date the most potent ligand presented by MR1 is 5-(2-oxopropylideneamino)-6-D-ribitylaminouracil (5-OP-RU), which is a derivative of a key bacterial/fungal riboflavin biosynthetic intermediate (8, 9). MAIT cells are unconventional T cells that emerge from the thymus in a “pre-primed” state and express an effector memory phenotype (in humans $CD45RA^-CD45RO^+CD95^{hi}CD62L^{lo}$) (10). This facilitates rapid innate-like responses to bacterial infections, such as *Francisella tularensis* (11), *Legionella longbeachae* (12) and *Mycobacterium tuberculosis* (TB) (13, 14).

MR1 is estimated to have appeared around 170 Mya ago in a common ancestor of marsupial and placental mammals (15, 16) and is the most highly conserved MHC molecule in its ligand-binding $\alpha 1$ -/ $\alpha 2$ -domains (15, 17–19). Despite this, MR1 has been lost in a select number of species, including carnivores and lagomorphs (16). MAIT cells express an essentially invariant T cell receptor (TCR) α chain (TRA), composed in humans of the variable gene segment 1-2 (*TRAV1-2*) (also known as *V α 7.2* in Arden nomenclature) rearranged with the TRA joining gene segment 33 (*TRAJ33*) (also known as *J α 33*), or less commonly *TRAJ12* (*J α 12*) and *TRAJ20* (*J α 20*), paired with TCR β chains (TRB) featuring dominant usage of specific TRBV gene segments (13, 20–23). Species that possess the MR1 gene also express a homolog of the canonical MAIT TCR *TRAV1-2* gene segment (16) and the entire canonical MAIT TCR α chain is conserved across mammalian species, with homologous TCR α chains detected in mouse (21), cattle (21, 24), sheep (24), pigs (25) and macaques (26). MAIT cells follow similar developmental pathways in humans and mice (27, 28) however, mice have much smaller MAIT cell populations than humans with differences in phenotype and tissue distribution (27). Thus, whilst mice have provided valuable information on MAIT cells in protection against infections (1, 12, 29, 30), pathology (31) and tissue repair (32), this might not always be fully representative of MAIT cell function in humans.

Beyond primates and mice, information on MAIT cells is limited. Cattle are an economically important livestock species and are also a relevant large animals model for human infections, including tuberculosis (33, 34) and respiratory syncytial virus (RSV) (35). Cattle express the MR1 gene and the canonical

MAIT cell TRA (18, 21, 24, 36). However, MAIT cells have not been characterized directly and there is no knowledge of the phenotype and function of MAIT cells in cattle. In humans and mice, as well as more recently in macaques, fluorescently labeled MR1 tetramers loaded with the MAIT cell activating ligand 5-OP-RU have become the gold standard to identify MAIT cells (8, 20, 26, 37–40). Tetramers loaded with the MR1 ligand 6-formylpterin (6-FP) (7, 41) or its acetylated analog, acetyl-6-FP (Ac-6-FP) (41), typically do not bind to MAIT cells and are often used as negative controls for MR1-5-OP-RU tetramer staining in humans (42). Here we used human MR1 tetramers and synthetic 5-OP-RU antigen to identify and characterize MAIT cells in cattle. Further, we show that cattle MAIT cells can be activated by bacteria *in vitro* and that MAIT cells respond in the context of mastitis and *Mycobacterium bovis* (*M. bovis*) infection in cattle, suggestive of a role for MAIT cells in these diseases, caused by riboflavin biosynthesis competent pathogens.

MATERIALS AND METHODS

Animals

All animal experiments were conducted within the limits of a United Kingdom Home office license under the Animal (Scientific Procedures Act 1986) (ASP) and were reviewed and approved by the Animal Welfare and Ethical Review Bodies of the institutes where the experiments were performed (the Roslin Institute and the Animal and Plant Health Agency). Sampling milk from cattle is below the threshold of pain, suffering, distress or lasting harm that requires A(SP)A licensing and the procedure was reviewed by the Veterinary Ethical Review Committee of the Royal Dick School of Veterinary Studies (RDSVS), Edinburgh University.

Healthy, Holstein-Frisian cattle aged between 3 and 56 months were housed at the Edinburgh University farms or at the Animal Plant and Health Agency (APHA) facilities at Weybridge. Blood was sampled from the jugular vein and peripheral blood mononuclear cells (PBMC) were isolated from blood by density gradient centrifugation and cryopreserved. To harvest tissues, seven male cattle (aged 10, 10, 10, 10, 20, 55, and 56 months) were culled by schedule 1 methods under the ASPA followed by auscultation of the heart to confirm cessation of the circulation.

The BCG-vaccination and *M. bovis*-challenge study was described previously (43). In short, six bovine tuberculosis-free 6-months old male Holstein-Friesian (cross) calves were vaccinated subcutaneously with 4.6×10^6 CFU *M. bovis* BCG Danish SSI 1331 (Statens serum Institute) and two calves served as controls. Nine weeks later all calves were infected with 10^4 CFU virulent *M. bovis* AF2122/97 via the endobronchial route. Twenty weeks post BCG vaccination all animals were euthanised and post-mortem examination was performed as

described by Vordermeier et al. (44). Gross visible lesions of lungs and the lymph-nodes of the head and pulmonary regions were scored semi-quantitatively resulting in a total gross pathology score. Blood was sampled regularly and PBMC were isolated and cryopreserved.

Milk was sampled from Holstein-Friesian cattle housed at Langhill Dairy Farm, the teaching farm of the RDSVS, Edinburgh University.

Tissue Sampling and Processing

Single cell suspensions were obtained from peripheral blood, prescapular lymph node (Ln), mesenteric Ln, lung, bronchial alveolar lavage (BAL), ilium, spleen, liver, and milk. Peripheral blood was diluted 1:1 in PBS and layered over Histopaque-1077 (Sigma-Aldrich) before centrifugation at 1,200 g for 20 min. Cells were washed and resuspended in RPMI supplemented with 10% FCS and 1% penicillin streptomycin (Sigma Aldrich) (complete media) or in PBS buffer supplemented with 2% FCS and 0.01% Azide. Prescapular Ln and mesenteric Ln were suspended in complete media before being manually disrupted and passed through a 100 μ M cell strainer. For lung and BAL, a lung lobe was removed and the main bronchus washed with 750 ml of PBS. Lungs were massaged for 30 s before BAL fluid was collected. The BAL fluid was transferred into 50 ml Falcon tubes and centrifuged at 400 g for 10 min and resuspended in complete media. A piece of lung was dissected in \sim 0.5 cm cubes and resuspended in 7 ml serum free RPMI containing 30 μ g/ml DNase and 700 μ g/ml collagenase (Sigma Aldrich) and in C Tubes (Miltenyi Biotec) disassociated using the gentleMACS Octo Dissociator (Miltenyi Biotec). The C tubes were then incubated for 60 min at 37°C, before being dissociated a second time. The tissue sample was then re-suspended in complete media and passed through a 100 μ M cell strainer. Ileum, spleen and liver were also dissected and, samples were suspended in C Tubes in complete media and disassociated using the gentleMACS Octo Dissociator. Following disassociation, the resulting ileum and spleen cell suspension was passed through a 100 μ M cell strainer. For liver, the cell suspension was resuspended in a 50 ml Falcon tube in 20 ml 35% PERCOLL which had previously been made isotonic with 10 \times PBS and diluted with complete media. The 35% PERCOLL was underlayered with 10 ml 70% PERCOLL and centrifuged at 1,200 g for 20 min. Cells were collected at the interface and resuspended. For all tissues other than liver and peripheral blood, the obtained cell suspensions were layered onto Histopaque-1077 (Sigma-Aldrich) before centrifugation at 1,200 g for 20 min and the lymphocytes collected at the interphase. All cells were finally filtered through a 100 μ M cell strainer, red blood cells lysed with an Ammonium Chloride Lysis buffer if required, washed and if not immediately used for assays, cryopreserved in FCS containing 10% DMSO. To isolate cells from milk, milk was centrifuged (400 g, 4°C, 15 min). The resulting fat layer was removed with a pipette tip and the supernatant discarded. The pellet was resuspended in PBS and moved to a clean tube and the procedure was repeated. For the second PBS wash, the cell suspension was filtered with a 70 μ M strainer and after centrifugation the cell pellet was resuspended in PBS + 2% FCS for downstream procedures.

ELISPOT

Frequencies of IFN- γ secreting cells were determined by ELISPOT IFN- γ assay. MultiScreen-HA ELISPOT plates (Merck Millipore) were coated with primary anti-IFN- γ clone CC330 (Serotec, 2 μ g/ml) and incubated at 4°C overnight. Plates were washed and blocked with complete media for 2 h. Plates were seeded with 2.5×10^5 PBMC and stimulated with either 1 μ M 5-OP-RU [produced in house as previously described (9)], 4 μ g/ml ConA (Sigma-Aldrich) or medium control. Plates were incubated overnight at 37°C before washing with PBS containing 0.05% Tween 20 and addition of secondary biotinylated IFN- γ detection Ab [clone CC302 (Serotec, 2 μ g/ml)]. Plates were incubated for 2 h at room temperature, washed a further five times, and streptavidin-alkaline phosphatase (Invitrogen) was added for 1 h. Spots were visualized using alkaline phosphatase substrate kit (Bio-Rad) and the reaction stopped using water. Immunospots were enumerated using the AID ELISPOT reader (AID Autoimmun Diagnostika). Results are expressed as the total number of IFN- γ producing cells per 10^6 input PBMC following subtraction of the average number of IFN- γ positive cells in medium control wells.

MR1 Tetramers

The MR1 tetramer technology was developed jointly by Dr. James McCluskey, Dr. Jamie Rossjohn, and Dr. David Fairlie (8) and the human MR1 tetramers (human MR1-5-OP-RU and human MR1-6-FP) were obtained from the NIH Tetramer Core Facility as permitted to be distributed by the University of Melbourne.

Flow Cytometry

For phenotyping, *ex vivo* isolated or thawed cryopreserved cells were seeded into a 96 well plate at $1-3 \times 10^6$ cells/well. Cells were stained with pre-diluted tetramer in PBS + 2% FCS for 40 min at room temperature. Following tetramer staining, primary antibodies (**Table 1**) were added in PBS buffer supplemented with 2% FCS and 0.01% Azide, and Near-Infrared or Yellow Fixable LIVE/DEAD stain (Invitrogen or Molecular probes) for 15–30 min at 4°C. If required, cells were washed, and secondary antibodies added for 15–30 min at 4°C. Cells were resuspended in PBS supplemented with 2% FCS and 0.01% sodium Azide and either immediately analyzed or fixed in 4% paraformaldehyde and resuspended in PBS prior to analysis.

For activation experiments, cryopreserved PBMC were thawed and stimulated with titrating amounts of 5-OP-RU, fixed *E. coli* or *S. aureus* at 30 bacteria per cell (BpC) for 7 h. Stimulation with human IL-12 (Miltenyi) and IL-18 (Biolegend), either alone (50 ng/ml) or in combination (50 ng/ml), and *M. bovis* strain BCG (3BpC) were performed over 18 h. For mitogen stimulation, PMA and Ionomycin (eBioscience cell stimulation cocktail) were added to cells for 6 h. Ac-6-FP (Schircks Laboratories) was used as a blocking reagent for some 5-OP-RU stimulations and was added 30 min prior to 5-OP-RU. For all stimulation conditions, Golgi plug (BD Biosciences) was added for the final 6 h of stimulation. Cells were stained with human MR1-5-OP-RU tetramer for 40 min at RT in the dark prior to the addition of anti-bovine CD8-biotin (Clone ILA51) and Near-Infrared Fixable LIVE/DEAD stain (Invitrogen or Molecular Probes) for 20 min at

TABLE 1 | Monoclonal antibodies used in flow cytometry experiments.

Purpose	Antigen	Clone	Isotype	Labeling strategy	Fluorochrome	Source primary ab
Identification/Frequency	CD3	MM1A	IgG1	Secondary antibody	AF488	In-house
	MHCII	ILA21	IgG2a	Secondary antibody	AF647	In-house
Co receptor phenotyping	CD4	ILA12	IgG2a	Secondary antibody	APC-Cy7	In-house
	TCR δ	GB21a	IgG2b	Secondary antibody	PE-Cy7	In-house
	CD8	ILA51	IgG1	Directly conjugated	AF647	In-house
	CD3	MM1A	IgG1	Directly conjugated	AF488	In-house
Memory/activation status	CD3	MM1A	IgG1	Secondary antibody	AF488	In-house
	CD45RO	ILA116	IgG3	Secondary antibody	PE-Cy7	In-house
	CD25	CACT108a	IgG2a	Secondary antibody	AF647	In-house
Activation assays	CCR7	3D12	IgG2a (rat)	Directly conjugated	APC-eFlour780	eBioscience
	CD8	ILA51	IgG1	biotin-streptavidin	BV-421	In-house
	IFN γ	CC302	IgG1	Directly conjugated	AF647	BIO-RAD
Transcription factor	TNF	CC327	IgG2b	Directly conjugated	AF488	BIO-RAD
	CD8	ILA51	IgG1	biotin-streptavidin	BV-421	In-house
	T-bet	4B10	IgG1	Directly conjugated	FITC	Biolegend
CD69	EOMES	WD1928	IgG1	Directly conjugated	eFlour661	Invitrogen
	PLZF	R17-809	IgG1	Directly conjugated	AF647	BD
	ROR- γ T	Q21-559	IgG2b	Directly conjugated	AF647	BD
	CD8	ILA105	IgG2a	Secondary antibody	AF647	In-house
Perforin	CD69	KTSN7A	IgG1	Secondary antibody	AF488	Kingfisher
	CD8	ILA105	IgG2a	Secondary antibody	APC-Cy7	In-house
	Perforin	dG9	IgG2b	Directly conjugated	Fitc	BD

4°C. BV421 conjugated streptavidin was added for 20 min at 4°C prior to fixation and permeabilisation (BD Fix perm kit). Anti IFN- γ -FITC (clone CC302) and TNF-APC (clone CC327) were added for 20 min at 4°C. Cells were washed and re-suspended in PBS prior to analysis.

For transcription factor stains, thawed PBMC were stained with tetramer, live/dead stain and primary and secondary antibodies as described. Cells were fixed in Fix perm buffer (eBioscience) for 1 h followed by 1 h in perm/wash buffer (BD). Conjugated antibodies specific for transcription factors PLZF (clone R17-809), EOMES (clone WD1928), ROR- γ T (clone Q21-559) and T-bet (clone 4B10) diluted in perm/wash buffer were added for 1 h at 4°C. Cells were resuspended in PBS prior to analysis. Positive staining for each marker was determined by appropriate isotype controls and non-MAIT cell control populations.

All cells were acquired on a MACSquant analyser 10 (Miltenyi) or LSRFortessa (BD Biosciences).

Bovine T Cell Receptor α and β Chain Sequencing

To obtain CD8⁺MR1-5-OP-RU tetramer⁻ (non-MAIT) and CD8⁺MR1-5-OP-RU tetramer⁺ (MAIT) cell populations for TCR sequencing, sequential MACS isolation and cell sorting were performed. Freshly isolated PBMC from four 13 months old heifer calves were stained with biotinylated mAb ILA51 (anti-CD8, produced in-house) in PBS supplemented with 0.5% FCS and 2 mM EDTA for 15 min on ice with resuspending

every 5 min. Following washing, cells were stained with magnetic anti-biotin beads (Miltenyi Biotec) and labeled cells were isolated using MS columns (Miltenyi Biotec) according to the manufacturer's instruction. Isolated cells were stained with MR1-5-OP-RU tetramer, followed by staining with mAbs MM1a (anti-CD3) and ILA105 (anti-CD8) and secondary antibodies and Fixable Yellow Dead Cell Stain (ThermoFisher Scientific). These cells were sorted using a FACSaria III (BD), gating on FSC and SSC, singlets and live cells, respectively. Within these gates CD8⁺MR1-5-OP-RU⁻ and CD8⁺MR1-5-OP-RU⁺ T cell populations were sorted directly into lysis buffer for RNA isolation (RNeasy Plus Micro kit, Qiagen). Purity of ungated sorted CD8⁺MR1-5-OP-RU⁺ cells was between 91–99% (**Supplementary Figure 1**). RNA was isolated from 20,000 cells using the RNeasy Plus Micro kit according to manufacturer's instruction, with addition of 4 ng/ μ l carrier RNA. cDNA was generated using the SuperScript IV kit (ThermoFisher Scientific) with a SMART oligo containing unique molecular identifiers (AAG CAG UGG TAU CAA CGC AGA GTUNNNNNUNNNNNUNNNNUCTTggggg (where N represents a mixture of A, T, G, and C and lower case "g" represents RNA bases) and the uracil-containing primers subsequently removed by treatment with UDG (NEB, Hitchin, UK). TRA and TRB sequences were amplified using a pair of 5' "step-out" primers specific for the SMART oligo (long 5' primer - CTA ATA CGA CTC ACT ATA GGG CAA GCA GTG GTA TCA ACG CAG AGT, and short 5' primer - CTA ATA CGA CTC ACT ATA GGG CAA GCA G) in combination with

TRAC- (TGG GGT TGG GGT CCT TGA CTT) and TRBC- (GAC SYG GCT CAG ATC ATC) specific 3' primers. PCR amplification was conducted using Phusion HF reagents (NEB) and employed the following cycling conditions: manual hot start, 30 s at 98°C, 35 cycles of (98°C for 10 s, 65°C for 30 s, 72°C for 30 s) and a final extension period of 5 min at 72°C. PCR products of the anticipated size were excised following agarose gel electrophoresis, purified using AMPure beads (Beckman Coulter, Indiana, US) and sent to Edinburgh Genomics for sequencing on the Illumina MiSeq v3. Platform. Analysis of the TCR repertoire was conducted with the MiXCR package (45) using an external database of bovine TRAV, TRBV, TRAJ and TRBJ genes derived from a combination of published (46, 47) and unpublished data.

Bacteria for MAIT Cell Stimulation

Tryptic soy broth (TSB) was inoculated with *Escherichia coli* strain DH5 α and *Staphylococcus aureus* strain RF122 from glycerol stocks and cultured overnight at 37°C and 200 RPM. The next morning a 1:100 dilution in TSB was cultured for 2 h and OD at 600 nm measured to estimate CFU/ml (OD 600 nm of 1.0 = 8×10^8 CFU/ml). Bacteria were washed with PBS, fixed in 1% formaldehyde for 5 min at RT, washed thrice with PBS, resuspended in CM and stored at -20°C.

M. bovis strain BCG Danish SSI 1331 (Statens Serum Institute) was cultured in glass vials in Middlebrook 7H9 broth supplemented with Tween 80, Amphotericin B (all Sigma-Aldrich), and BD Difco™ BBL™ Middlebrook ADC Enrichment and incubated at 37°C with agitation with a magnetic stir bar. After 25 days the bacterial culture was vortexed vigorously and after 1 min the “supernatant” was harvested and passed several times through a 21g needle to obtain a single bacteria suspension. Bacteria were pelleted and resuspended in 7H9 broth supplemented with 30% glycerol, aliquoted and stored at -80°C. Thawed aliquots were serially diluted 1:10 in 7H9 broth and 100 μ l of these suspensions were cultured on Middlebrook 7H11 agar, supplemented with OADC (both BD), to determine CFU/ml.

Data Analyses and Statistics

Flow cytometry data were analyzed using FlowJo v10. Descriptive and statistical analyses were performed using Prism software version 8 (GraphPad). Data presented in the text and figures are means with standard error of the mean (SEM). *P*-values corrected for multiple comparisons ≤ 0.05 were considered significant. **p* ≤ 0.05 , ***p* < 0.01, ****p* < 0.001, *****p* < 0.0001.

RESULTS

Identification of MAIT Cells in Cattle

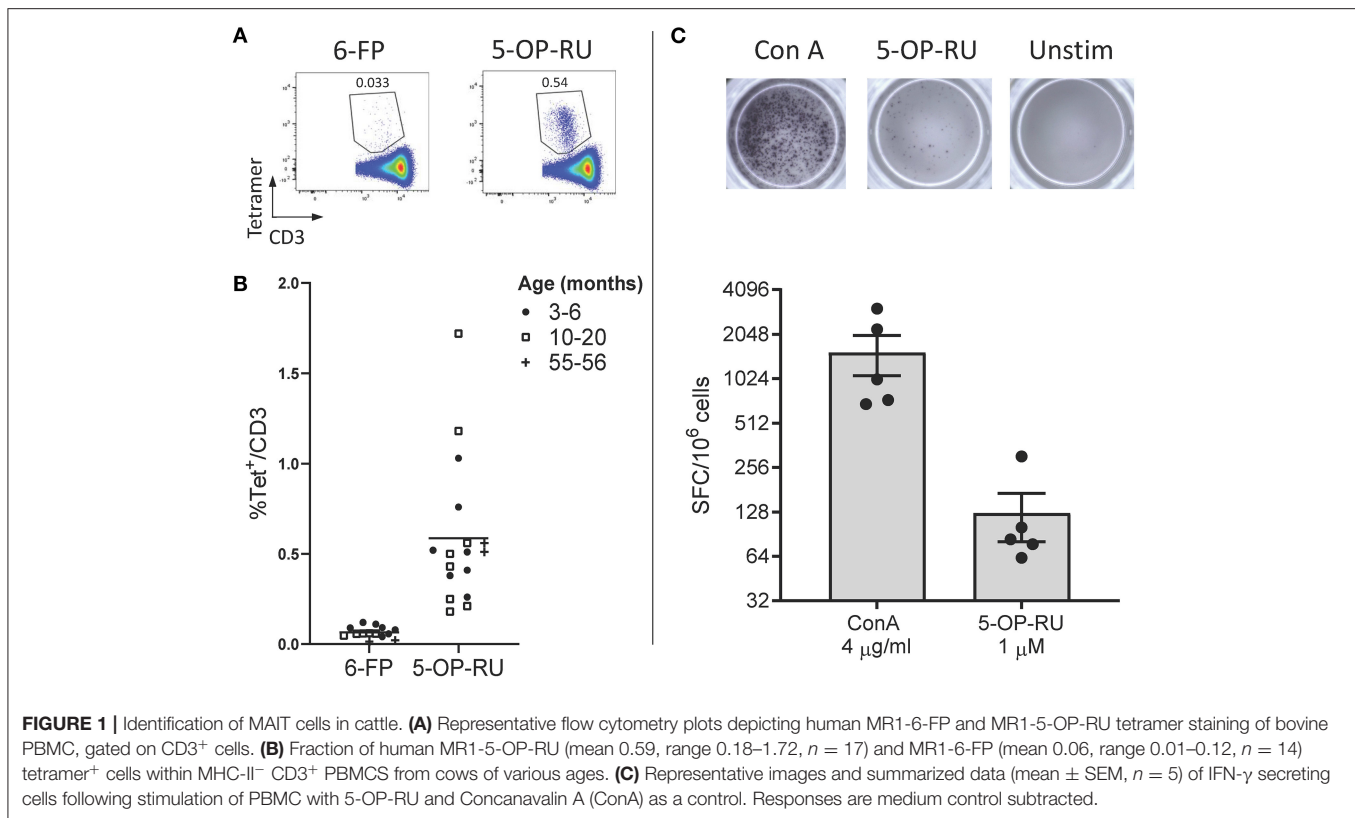
Due to the high level of MR1 (15, 16, 18, 36) and MAIT TCR α chain (15, 16, 21, 24–26) conservation between species, we hypothesized that human MR1 tetramers would likely cross react with cattle MAIT cells. We isolated PBMC from a cohort of cattle (*n* = 17) of varying age (3 to 56 months) and indeed staining with MR1-5-OP-RU tetramers identified a clear population of CD3⁺ tetramer⁺ ‘putative’ MAIT cells (Figures 1A,B) with a mean frequency of 0.6% amongst CD3⁺ cells, which was comparable to previous qPCR estimates of MAIT cell frequency in cattle

(~0.2% of transcribed TRA) (24). A much lower frequency was identified by the control MR1-6-FP tetramer (Figures 1A,B). The frequency of MAIT cells varied greatly between individuals with a range of 0.18–1.72% and an interquartile range (IQR) of 0.33–0.66% of total T cells. Within this age cohort (3–56 months), there was no correlation between age and MAIT cell frequency. Whilst in humans MAIT cells make up a higher proportion of T cells (mean 3.1%), frequencies of MAIT cells in humans also vary widely between individuals with an IQR of 1.3–4.5% (39). The most potent MAIT cell ligand identified to date is 5-OP-RU (8, 9), which specifically induces cytokine secretion, including IFN- γ , in MAIT cells but not in other T cells (8, 41). To corroborate the identification of MAIT cells using tetramers, we next determined whether a 5-OP-RU reactive population was present in cattle PBMC by IFN- γ ELISpot following stimulation with synthetic 5-OP-RU (9) (Figure 1C). Following stimulation with 5-OP-RU a mean of 125 IFN- γ secreting cells /10⁶ PBMC were detected, demonstrating that there was a 5-OP-RU reactive T cell population in cattle. In summary, we identified a population of MR1-5-OP-RU tetramer⁺ T cells and 5-OP-RU reactive cells in cattle peripheral blood, strongly suggesting that we identified a MAIT cell population in cattle.

Phenotype of MAIT Cells in Bovine Peripheral Blood

MAIT cells are unconventional T lymphocytes with functional and phenotypic features that distinguishes them from conventional T lymphocytes, including an effector memory phenotype prior to antigen exposure (48), enrichment in mucosa (2) and expression of specific transcription factors such as PLZF (28). According to co-receptor expression (Figure 2A), cattle peripheral blood CD3⁺ MAIT cells were predominantly CD8⁺ (mean 73.9%, IQR 64–87%) or double negative (mean 19.7%, IQR 12.7–27.5%) with a low frequency of CD4⁺ (2.7% IQR 0.9–3.4%) MAIT cells identified. This disagrees with the earliest report of MAIT cells in cattle suggesting that cattle MAIT cells were not CD8 positive (21). Interestingly, some of the tetramer positive cells were TCR δ ⁺ (mean 8.33% IQR 2.3–13.3% of total MR1-5-OP-RU tetramer⁺ population in PBMC) (Figure 2A), equating to a mean frequency of 0.08% of total $\gamma\delta$ ⁺ T cells in cattle. Cattle are a $\gamma\delta$ T cell high species and in adult cattle ~10–20% of circulating lymphocytes are TCR $\gamma\delta$ positive (49). This observation mirrors a recent report of human MR1 reactive $\gamma\delta$ T cells (50).

In contrast to non-MAIT T cells, peripheral blood MAIT cells featured almost exclusively an effector memory phenotype (CD45RO⁺ CCR7⁻) (Figure 2B), as in humans (48). We also compared transcription factor expression in CD8⁺ MAIT cells to CD8⁺ non-MAIT cells. Whilst cattle specific antibodies against the transcription factors PLZF, EOMES, ROR γ T and T-bet are not available, transcription factors are highly conserved between species and monoclonal antibodies have previously been shown to cross react between species. ROR γ T and T-Bet showed little expression above isotype control likely due to insufficient cross reactivity. However, PLZF and EOMES-expression was significantly higher in bovine CD8⁺ MR1-5-OP-RU tetramer⁺



MAIT cells compared to CD8⁺ non-MAIT T cells (**Figure 2C**). Similarly, antibodies specific for human TRAV1-2 (clone 3C10) and CD161 (clone 191B8) did not appear to cross react (data not shown). Together these data showed that MAIT cells in cattle almost exclusively had an effector memory phenotype and were predominantly CD8, PLZF and EOMES positive.

MAIT Cells in Cattle Can Be Activated by 5-OP-RU and by Cytokines

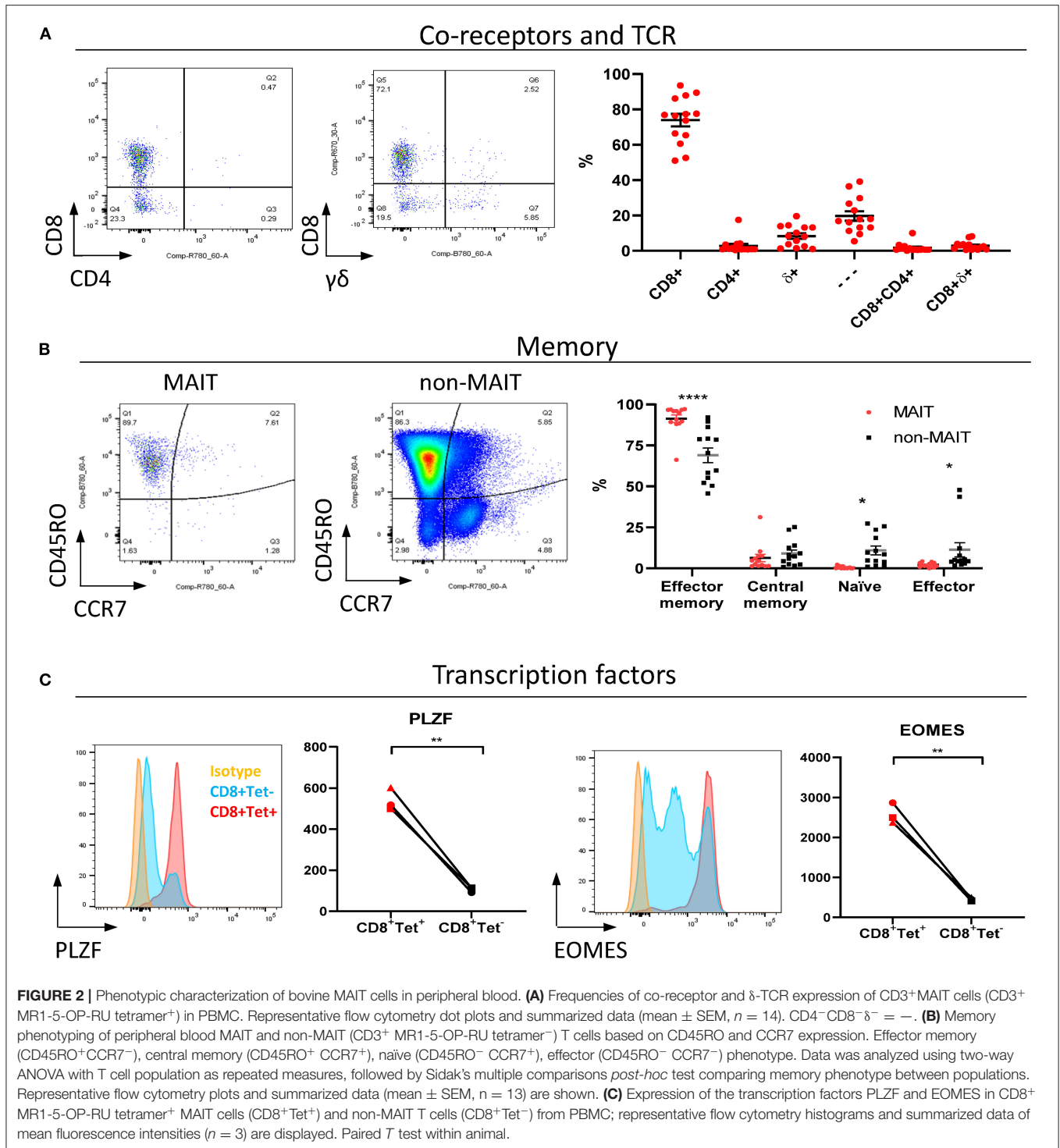
As the majority of MAIT cells were CD8⁺ (**Figure 2A**), activation experiments focussed on comparing human MR1-5-OP-RU tetramer positive and negative CD8⁺ populations (MAIT and non-MAIT CD8 T cells, respectively). CD8⁺ MAIT cells were specifically stimulated to express IFN- γ (mean 32% IFN- γ ⁺) and TNF (mean 29% TNF⁺) by the canonical MAIT cell ligand 5-OP-RU (**Figure 3A**) at concentrations as low as 50 pM (**Supplementary Figures 2A,B**). Increased concentrations of 5-OP-RU (**Supplementary Figure 2C**) and prolonged incubation time with 5-OP-RU (**Supplementary Figure 2D**) correlated with declining fractions of MR1-5-OP-RU tetramer⁺ cells (**Supplementary Figure 2C**), suggesting that the TCRs of bovine MAIT cells are downregulated upon binding to cognate ligand, as described previously (51). The residual fraction of cytokine positive CD8⁺ tetramer negative cells following 5-OP-RU stimulation (**Figure 3A** and **Supplementary Figure 2**) are therefore most likely activated MAIT cells with downregulated TCRs. The 5-OP-RU-mediated activation of cattle MAIT cells

was competitively inhibited by the inhibitory MR1 ligand Ac-6-FP (**Figure 3B**), as is the case with human (41) and mouse MAIT cells (52), and strongly suggests that activation is mediated through MR1-TCR interactions.

MAIT cells can be stimulated in a TCR independent manner via cytokine stimulation (53). Following stimulation with IL-18, bovine CD8⁺ MAIT cells produced IFN- γ (mean 31 % IFN- γ ⁺) and low frequencies of TNF producing cells (mean 2% TNF⁺) were observed (**Figure 3C**). There was no significant response to stimulation with IL-12 only by MAIT or non-MAIT T cells, but in conjunction with IL-18, IL-12 did significantly increase the frequency of MAIT cells producing IFN- γ (mean 56% IFN- γ ⁺) compared to IL-18 stimulation alone. Unlike 5-OP-RU stimulation, cytokine stimulation did not appear to affect MR1-5-OP-RU tetramer binding, suggesting that it did not induce TCR downregulation (data not shown).

Cattle MAIT Cells Express a Conserved T Cell Receptor Alpha Chain and Show Low Beta Chain Diversity

The canonical MAIT TCR α chain has previously been identified in cattle by sequencing of a limited number of unsorted T cells with no pre-identification of MAIT cells (21, 24). Here we performed deep TCR profiling of sorted bovine CD8⁺ MR1-5-OP-RU tetramer⁺ MAIT cells in comparison to MR1-5-OP-RU tetramer⁻ CD8⁺ T cells. The sorted MAIT cell populations were highly enriched for the canonical TRAV1



(73.3%) and *TRAJ33* (72%) gene segments which were not enriched in the $CD8^+$ non-MAIT cell population (Figures 4A,B and Supplementary Figures 3, 4). The TCR β chain usage of bovine MAIT cells was more diverse than the TCR α chain, though an enrichment of *TRBV4*, *TRBV7* and *TRBV20* was seen

in the MAIT cell population compared to the non-MAIT $CD8^+$ population (Figures 4A,B and Supplementary Figures 3, 4), accounting for 35, 13, and 23% of total TRBV sequences in MAIT cells respectively. This mirrors findings in humans where the critical residues for MR1 recognition are found

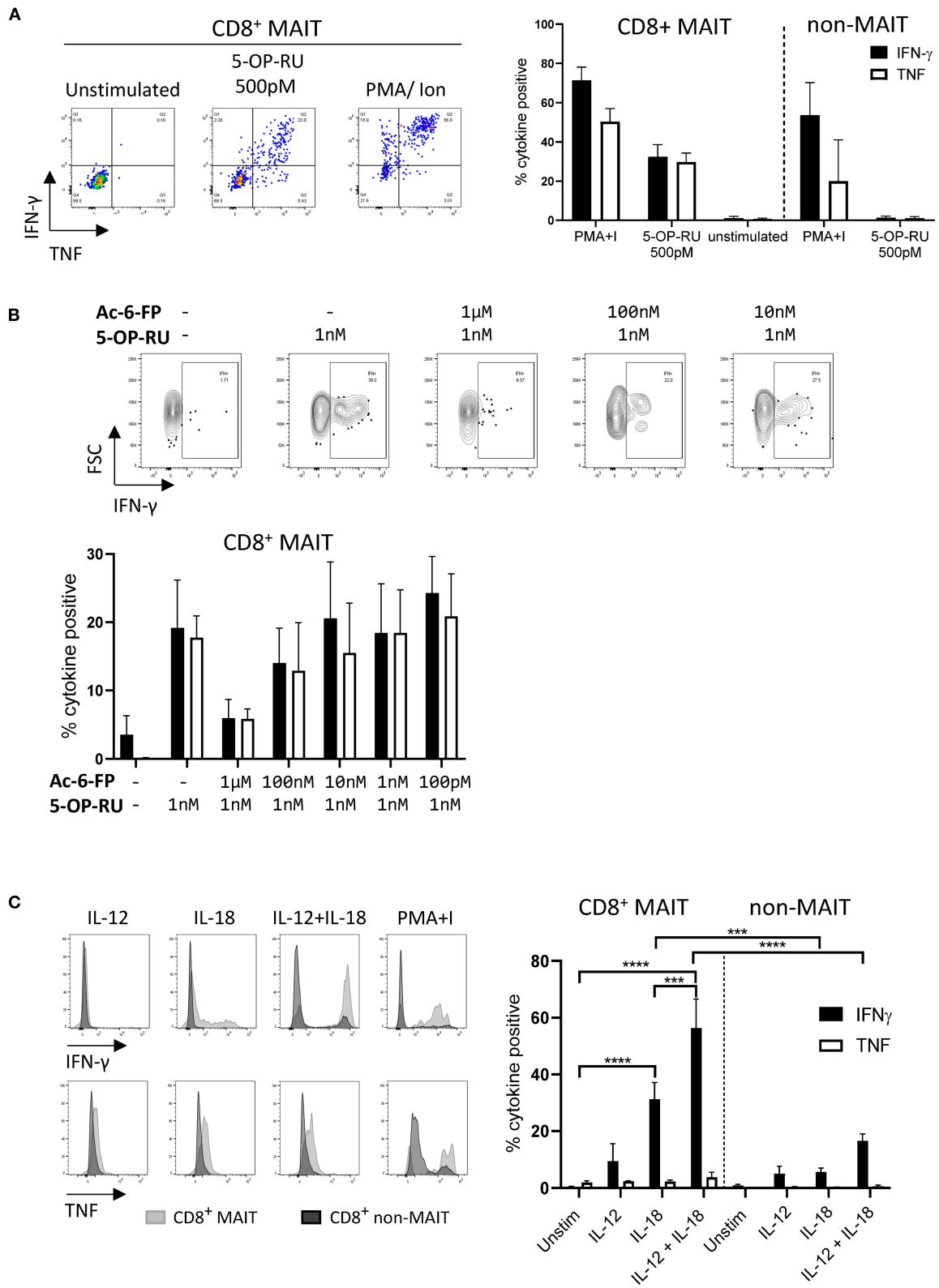


FIGURE 3 | Antigen and cytokine stimulation of cattle MAIT cells. **(A)** Representative flow cytometry plots and summarized data of IFN-γ and TNF expression (mean ± SEM, n = 3) of live CD8⁺ MR1-5-OP-RU tetramer⁺ (MAIT) and CD8⁺ tetramer⁻ (non-MAIT) cells incubated with 5-OP-RU for 7 h at a concentration of 500 pM. *(Continued)*

FIGURE 3 | Unstimulated cells and phorbol myristate acetate & ionomycin (PMA+I) stimulated controls are also shown. **(B)** Representative flow cytometry plots and summarized data of cattle PBMC incubated with Ac-6-FP prior to the addition of 1 nM 5-OP-RU (mean \pm SEM, $n = 3$). Lymphocytes were gated for FSC&SSC, singlets, live and CD8 expression followed by tetramer⁺/IFN- γ ⁺ gating. The fraction of IFN- γ and TNF positive cells within MAIT cells (CD8⁺ tetramer⁺ or IFN- γ ⁺) was determined. **(C)** PBMC were stimulated for 18 h with IL-12, IL-18 or a combination of both (all at 50 ng/ml). Representative flow cytometry histogram plots show IFN- γ and TNF expression within CD8⁺ MAIT cells overlaid with CD8⁺ non-MAIT cells. Summarized data of the fraction of cytokine positive CD8⁺ MAIT and non-MAIT cells are shown (mean \pm SEM, $n = 4$). Data were analyzed using two-way ANOVA with repeated measures within animal, followed by Sidak's multiple comparisons *post-hoc* test comparing the mean of each cytokine stimulation within and between CD8⁺ MAIT cells and CD8⁺ non-MAIT cells.

in the TCR α chain (6, 54) and the TCR β chains are more variable, though specific TRBV, particularly *TRBV6* and *TRBV20*, dominate (20, 22, 39, 41, 55, 56). The nomenclature of cattle TCR gene segments is based on human orthologs and *TRBV20* is, therefore, enriched in both human and cattle MAIT cells. The CDR3 α loops of CD8⁺ MAIT TCRs were primarily 12aa long, similar to the canonical human MAIT cell TCR (**Figure 4C**), accounting for 76% of all MAIT cells, whereas CDR3 α loops of non-MAIT TCRs varied much more in length and most (73%) were longer. The CDR3 β loops of CD8⁺ MAIT TCRs were more varied in length than the CDR3 α loops and displayed a similar length distribution as compared to those of non-MAIT CD8⁺ TCRs. In humans the MAIT TCR α rearrangements *TRAV1-2-TRAJ33/20/12* account for the majority (~95%) of MAIT TCR clonotypes in blood (20, 22, 39, 55, 57).

When analyzing the TCR sequences at the clonal level, 62-76% of CD8⁺ MAIT cells expressed the canonical *TRAV1-TRAJ33* TCR rearrangement (**Figure 4B** and **Supplementary Figures 3, 4**), similar to what Greene et al. (26) previously described in macaques where 70% of TCRs of MR1 tetramer positive peripheral blood T cells were *TRAV1-2*⁺. The non-canonical TCR rearrangements were highly diverse, with no CDR3 sequences shared between all four donors (**Supplementary Data 1**). The non-canonical TCR may be the result of nonspecific binding of tetramer to non-MAIT cells, sorting impurities or non-MAIT cell MR1 reactive T cells, which are rare populations identified in mice and humans (58). *TRAV1-TRAJ33*⁺ cattle MAIT TCRs featured two similar CDR3 sequences, the predominant sequence of which was CVVMDGNYQWIW with a secondary sequence observed in all animals with a single aa substitution of methionine to isoleucine at position 91 (**Figure 4D** and **Supplementary Data 1**). The same position in addition to the neighboring residue also varies in human *TRAV1-2-TRAJ33*⁺ MAIT cell TCRs (CAXXDSNYQLIW)(21, 39, 56, 57). Both of the cattle CDR3 α sequences are conserved in Tyr95, which is critical for MR1 and antigen binding in humans (54). While cattle have orthologs for the human *TRAJ12* and *TRAJ20* gene segments, including conservation of a tyrosine at the same position, these *TRAJ* segments were not enriched in cattle MAIT cells. Altogether, the identified TCR CDR3 α sequences are in agreement with previously predicted putative cattle MAIT TCR CDR3 α sequences (21, 24). The deep TCR profiling, together with the functional and phenotypical analyses, confirmed that the MR1-5-OP-RU tetramer positive cells in cattle are bona fide MAIT cells.

Distribution and Phenotypic Comparison of MAIT Cells in Tissues

In cattle PBMC, ~0.6% of CD3⁺ lymphocytes (**Figure 1B**) or 4% of CD8⁺ lymphocytes were MAIT cells (**Figures 5A,B**). MAIT cells in humans are highly enriched in mucosal tissues and liver (2). This was also true in cattle (**Figures 5A,B**), with greater frequencies of CD3⁺ MR1-5-OP-RU tetramer positive cells detected in lung, spleen, liver and BAL when compared to PBMC (mean 1.74, 1.02, 2.71, and 1.84% of CD3⁺ lymphocytes respectively). MAIT cell frequencies in the ileum were comparable to those in PBMC (mean 0.6%). Of note, an enrichment of MAIT cells was observed in the mesenteric Ln (mean 3.5%), but not in the pre-scapular Ln (mean 0.6%) (**Figures 5A,B**). The high frequency of MAIT cells in the mesenteric Ln was not seen in a recent study of the pigtail macaque (40) and may be specific to cattle. One could speculate that this difference is due to the large microbial populations in the rumen and large intestines of cattle, which are drained by the mesenteric lymph node. Although in all tissues a low fraction of T cells bound MR1-6-FP tetramer compared to MR1-5-OP-RU tetramer, relatively more MR1-6-FP tetramer positive T cells were identified in spleen and liver (**Figures 5A,B**). The percentage of effector memory non-MAIT T cells varied greatly across tissues, whereas CD3⁺ MAIT cells predominantly had an effector memory phenotype irrespective of origin (**Figure 5C**). Non-MAIT T cells in lymph nodes were predominantly CCR7 high. In contrast, MAIT cells in prescapular and mesenteric lymph nodes had an effector memory phenotype with low expression of CCR7, as was reported for human MAIT cells in thoracic duct lymph (59). Migration of $\gamma\delta$ T cells from tissue to lymph nodes was shown to be CCR7 independent in cattle (60) and it has been hypothesized that CCR7 low MAIT cells enter the lymphatics from tissues in a CCR7 independent manner (59).

Differences in co-receptor usage between CD3⁺ MAIT cells from blood and tissues were observed (**Figure 5D** and **Supplementary Figure 5**). MAIT cells from peripheral blood had the largest CD8⁺ population (mean 76% CD8⁺) with no significant difference in the frequency of MAIT cells expressing CD8 in lung, spleen and liver (mean 74, 68, and 68% CD8⁺ respectively). Significantly lower fractions of CD8⁺ MAIT cells were identified in the pre-scapular Ln. (mean 54% CD8⁺) and in ileum, which showed the lowest frequency of CD8 expression (mean 37% CD8⁺). There was a trend for a lower fraction of CD8⁺ MAIT cells in mesenteric Ln. (mean 52% CD8⁺, $p = 0.079$) and in BAL (mean 58%, $p = 0.054$). There was a strong negative correlation between the fraction of CD8⁺ and CD8⁻CD4⁻TCR γ ⁻ MAIT cells ($R^2 = 0.90$) and the fraction of these triple negative MAIT cells was proportionally increased

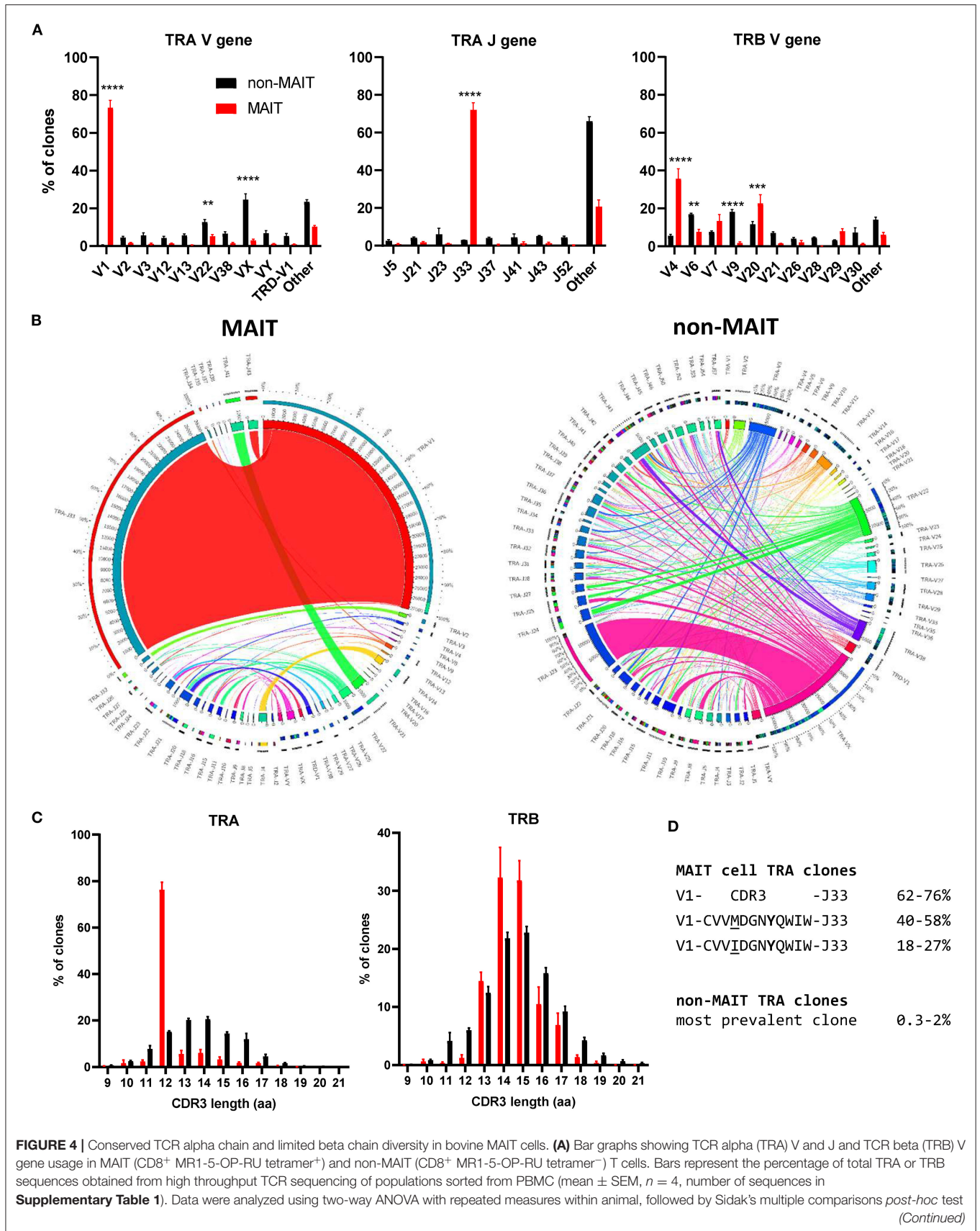


FIGURE 4 | comparing gene usage between MAIT and non-MAIT T cells. **(B)** Circos plots showing TRAV-J combinatorial diversity within MAIT and non-MAIT T cells. The inner circle shows the number of sequence reads per V and J gene and TRAV/J combinations are indicated by proportional bands linking the genes using the color of the V gene. The outer ring shows the frequency of pairing for each TCR gene segment to the reciprocal gene segment colored according to the paired gene. Representative plots from a single individual. **(C)** Distribution of TRA and TRB CDR3 amino acid (aa) length. **(D)** Alignment of the TCR alpha CDR3 region of the dominant MAIT cell clones.

in tissues with low CD8 expression (**Supplementary Figure 5**). Differences in IL-2R α chain (CD25) expression were also noted (**Figure 5D**), with a trend for a greater frequency of CD25 high MAIT cells in BAL (mean 61%, $p = 0.066$), compared to MAIT cells in peripheral blood (mean 25%). A significantly higher proportion of CD25 high MAIT cells was seen in prescapular (mean 69%) and mesenteric (mean 81.2%) lymph nodes, which is more comparable to other tissues than to blood, potentially due to MAIT cell recirculation between tissues and lymph nodes (59, 60).

Cattle MAIT Cells Respond to Bacterial Infections *in vivo* and Bacterial Stimulation *in vitro*

Next, we sought to characterize MAIT cells in cattle directly *ex vivo* during infection as well as in an immunization-challenge model. Mastitis is an inflammation of the mammary gland and is most often due to bacterial infections by riboflavin biosynthesis proficient bacteria, such as *Escherichia coli* (*E. coli*) and *Staphylococcus aureus* (*S. aureus*). It is the most frequent disease in dairy cattle, presents a major impact on animal welfare, and is associated with economic losses (61). Milk contains many different blood derived immune cells (62, 63), and MR1-tetramer staining of cells in milk from healthy cows revealed a distinct CD3⁺ MAIT cell population consistently present in bovine milk (mean 0.8% of CD3⁺, IQR 0.4-1.4%, $n = 6$, **Figure 6A** and **Supplementary Figure 6A**). The number of cells in milk, also referred to as somatic cell count (SCC) is used as a biomarker for mastitis, where animals with an elevated SCC (>200,000 cells/ml) are considered to have mastitis (64). Cattle with an elevated SCC had on average a >5-fold increase in MAIT cells as a percentage of CD3⁺ T cells, indicating increased migration of MAIT cells relative to other T cells from blood to milk during mastitis (**Figure 6A**) and suggesting a possible direct or bystander role of MAIT cells in this inflammatory condition.

We next assessed CD8⁺ MAIT cell responses to *Mycobacterium bovis* (*M. bovis*) infection longitudinally in cattle vaccinated with the attenuated *M. bovis* strain Bacillus Calmette–Guérin (BCG) and following endobronchial challenge with the virulent *M. bovis* strain AF2122/97. Perforin and granzyme production can be used as activation markers of MAIT cells (2, 65). In cattle, no changes in the frequency of perforin expressing CD8⁺ MAIT cells were found *ex vivo* in PBMC following BCG vaccination (**Figure 6B**). However, 2 weeks following endobronchial challenge with *M. bovis* the fraction of perforin expressing CD8⁺ MAIT cells was significantly higher in animals that showed tuberculosis associated lesions in the lungs and lymph nodes compared to animals without lesions (**Figure 6C**). While perforin expression

did not change in tetramer negative (non-MAIT) CD8⁺ T cells, there was a significant, transient, increase in perforin expression amongst CD8⁺ MAIT cells in animals with lesions (**Supplementary Figure 6B**). In macaques, activation of MAIT cells was much more pronounced locally at the site of BCG vaccination (26). Vaccination with the attenuated *M. bovis* BCG strain causes a local infection and it is therefore not surprising that MAIT cell activation was not detectable in peripheral blood. We hypothesize that severe infection with virulent *M. bovis* resulting in lesions in multiple organs leads to more widespread MAIT cell activation that can be detected in peripheral blood. No changes in CD69 expression, or in CD8⁺ MAIT cell frequencies were detected in peripheral blood of BCG vaccinated or *M. bovis* challenged animals (**Supplementary Figures 6C–F**), which is in agreement with findings after BCG vaccination in humans (66) and *M. tuberculosis* challenge in macaques (26). Overall, these data demonstrate that *M. bovis* infection in cattle can lead to activation of MAIT cells *in vivo*.

Having established that MAIT cells may respond to bacterial infections in cattle *in vivo*, we went on to validate whether cattle MAIT cells were activated by riboflavin biosynthesis competent bacteria. PBMC were stimulated with *E. coli*, and the attenuated *M. bovis* strain BCG (**Figures 6D,E**). Stimulation with *E. coli* for 7 h led to robust IFN- γ and TNF upregulation by CD8⁺ MAIT cells, while tetramer negative CD8⁺ T cells showed limited activation (**Figure 6D**), which may include activated MAIT cells that have downregulated their TCRs (**Supplementary Figure 2**). When stimulated overnight with BCG, CD8⁺ MAIT cells displayed robust IFN- γ production whilst TNF expression was limited (**Figure 6E**), comparable with the cytokine profile observed upon IL-12/IL-18-stimulation (**Figure 3C**). This is in agreement with human MAIT cell responses to BCG stimulation, which were reported to be mediated primarily by IL-12/IL-18 rather than TCR-antigen-MR1 stimulation and yielded IFN- γ , but not TNF production (66). *S. aureus* also stimulated IFN- γ and TNF production in bovine CD8⁺ MAIT cells (**Supplementary Figure 7**). Together these data illustrate that cattle MAIT cells respond to bacterial infections *in vivo* and are activated by bacteria *in vitro*.

DISCUSSION

The canonical MAIT cell TCR α chain was first identified in cattle alongside humans and mice over 20 years ago (21), but phenotypic and functional MAIT cells have not been described in any livestock species. The use of human MR1 tetramers that cross react with cattle have allowed us to identify MAIT cells in cattle and characterize their phenotype and function *in vitro* and directly *ex vivo*. While these data were generated

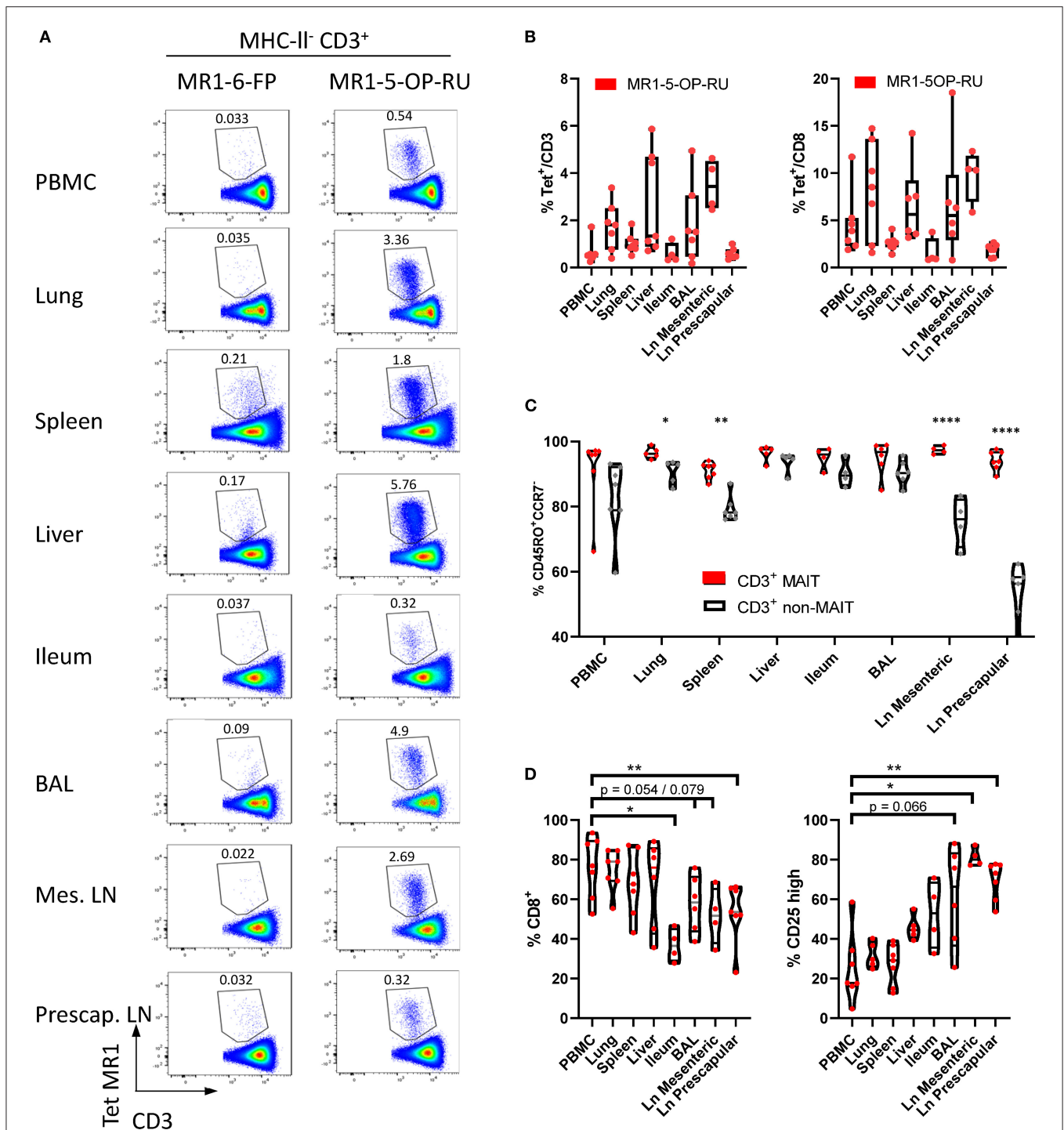
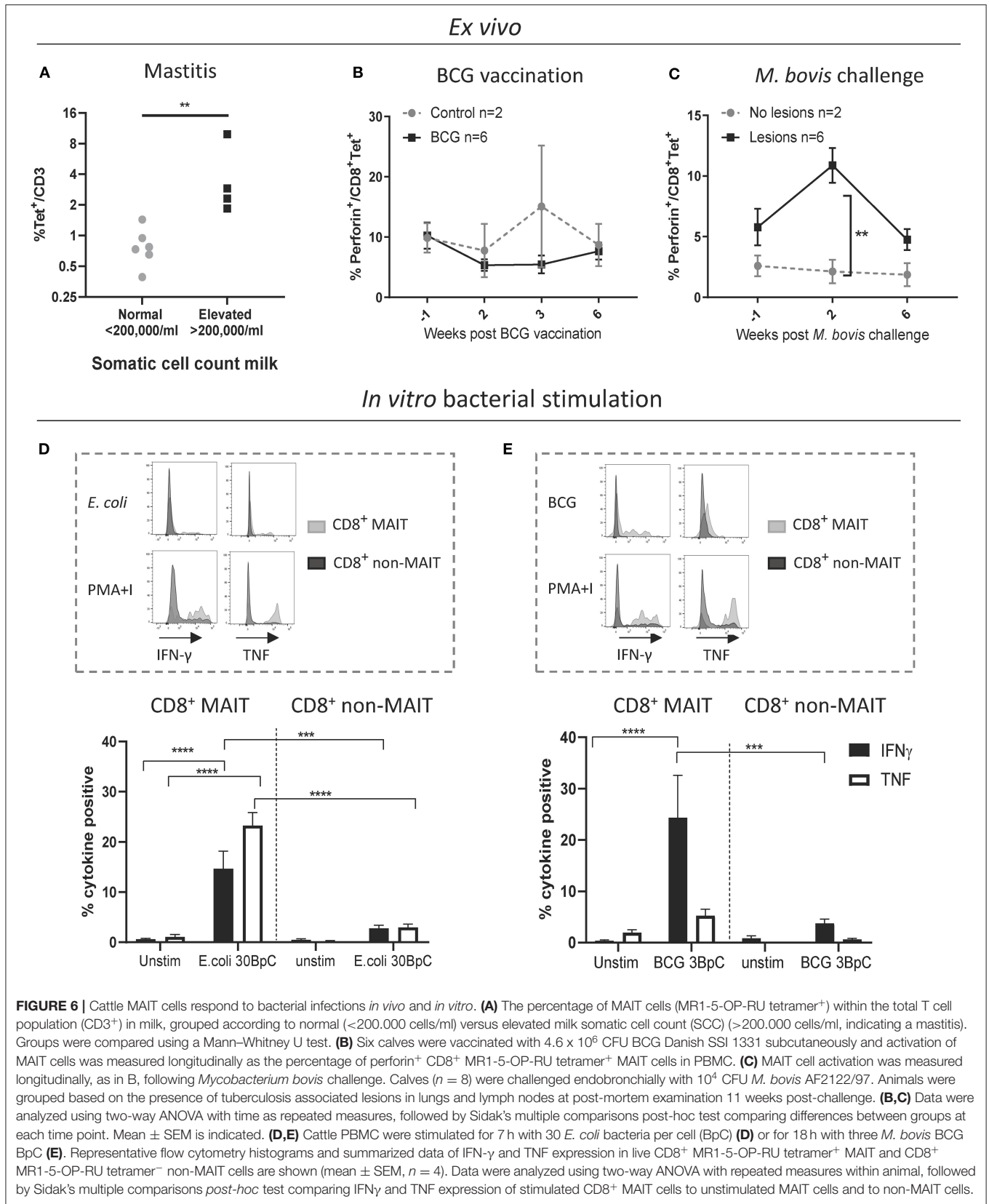


FIGURE 5 | Comparisons of the frequencies and phenotype of cattle MAIT cells in different tissues. **(A)** Representative flow cytometry plots of MR1-5-OP-RU tetramer gating within MHC-II⁻ CD3⁺ cells in different tissues. **(B)** Frequencies of CD3⁺ MR1-5-OP-RU tetramer⁺ MAIT cells and CD8⁺ MR1-5-OP-RU tetramer⁺ MAIT cells in different tissues from cattle. Number of animals per tissue are given in **Supplementary Table 2**. **(C)** Frequency of effector memory (CD45RO⁺CCR7⁻) MAIT (CD3⁺ tetramer⁺) and non-MAIT T cells (CD3⁺ tetramer⁻). Mixed effects model with matching across tissue and cell population, followed by Sidak's multiple comparisons *post-hoc* test comparing differences between MAIT and non-MAIT cells within tissues. **(D)** Frequency of CD8⁺ or CD25 high MAIT cells (CD3⁺ MR1-5-OP-RU⁺). Mixed effects model with matching across tissue, followed by Dunnett's multiple comparisons *post-hoc* test comparing differences between PBMC and other tissues.



using a xeno-MR1 reagent, the further phenotypic and functional analysis of cattle MAIT cells was in great agreement with that of other species and thus gives confidence that the human MR1-5-OP-RU tetramer identifies a MAIT cell population in cattle. Our data demonstrate that cattle MAIT cells are phenotypically and functionally similar to their human counterparts, including expression of an orthologous conserved TRAV1-TRAJ33 T cell receptor α chain by the majority of MR1 tetramer⁺ cells, an effector memory phenotype, expression of transcription factors associated with innate immunity, enrichment in mucosal tissues and activation by synthetic 5-OP-RU, the cytokines IL-12 and IL18, and riboflavin biosynthesis competent bacteria.

Cattle produce around 20 to 60 L of milk per day and are milked at least twice a day. The large volumes and continuous production of milk means there is a huge migration of immune cells from blood to milk, even in a healthy non-infected non-inflamed mammary gland (62, 63). The increased MAIT cell frequency in milk in cows with mastitis implies increased trafficking of MAIT cells relative to other T cells to the mammary gland during infection. Mastitis in cattle is predominantly bacterial in origin and is characterized by a massive migration of neutrophils to the mammary gland (67). The major mastitis pathogens *E. coli* and *S. aureus* (68) stimulated bovine MAIT cells *in vitro*. MAIT cells are a key source of pro-inflammatory cytokines (31, 38, 69) and bacteria induced cytokine responses by MAIT cells in the context of mastitis could be a driving force in the neutrophil influx and inflammation associated with intramammary bacterial infections. Further studies tracking MAIT cells longitudinally in milk and tissues during intramammary infections, will shed light on the role of MAIT cells in mastitis, including the temporal relation to neutrophil influx. Maternal immune cells in milk play a role in the development of the neonatal immune system (70, 71) and milk derived CD8⁺ T cells preferentially home to the Peyer's patches of the small intestine (72). MAIT cells have also been identified in human breast milk (73). Given the monomorphic nature of their restriction element MR1, MAIT cells are donor-unrestricted and can be activated by MR1 expressing cells from any individual (74). MAIT cells present in milk and possibly also in colostrum may be transferred to the neonate where they could play a role in passive immunity in the upper and lower intestinal tract (71).

MAIT cells have been shown to be activated by *Mycobacterium tuberculosis* in humans (14, 66), non-human primates (26) and mice (75). Furthermore, MAIT cells are the predominant IFN- γ producing T cell population in TB exposed individuals upon restimulation with BCG (66). The increased proportion of perforin⁺ MAIT cells in cows with TB lesions combined with the activation of MAIT cells by BCG *in vitro* indicates that MAIT cells may play a role in bovine TB. Intravenous, but not intradermal, administration of BCG was shown to transiently (up to 8 weeks) increase MAIT cell frequencies in the BAL of non-human primates, while there was no effect on MAIT cells in peripheral blood (76). The same study also showed limited responses by MAIT cells in the periphery to subcutaneous BCG vaccination and demonstrates that route of vaccine administration and tissue localization are important

factors to consider when studying MAIT cell responses to vaccination. Recently, 5-OP-RU vaccination of mice was not shown to be protective of TB infection and contributed to a delayed CD4 response to the infection. However, treatment with 5-OP-RU during chronic TB infection led to an increase in MAIT cell frequencies and a lowering of bacterial burden, which was dependent on IL-17 expression (77). The emerging picture suggests that MAIT cells are involved in immunity against TB infection, although whether their role is protective may well depend on a range of factors, including stage of infection. As a natural host of TB and with the possibility for repeated (tissue) sampling and cannulation of lymph nodes, cattle are an appropriate large animal model with unique potential to study MAIT cells longitudinally in tissues *in vivo*.

In summary, we have identified a MAIT cell population in cattle with phenotypic and functional characteristics closely resembling MAIT cells in mice and humans. We have demonstrated that cattle MAIT cells respond to bacterial infections of economic and zoonotic importance and the data and tools presented here will facilitate the use of cattle as a relevant large animal model to study MAIT cell biology during immunization and infection.

DATA AVAILABILITY STATEMENT

The raw data supporting the conclusions of this article will be made available by the authors, without undue reservation.

ETHICS STATEMENT

The animal study was reviewed and approved by the Animal Welfare and Ethical Review Bodies of the institutes where the experiments were performed (the Roslin Institute and the Animal and Plant Health Agency). All animal experiments were conducted within the limits of a United Kingdom Home office license under the Animal (Scientific Procedures Act 1986) (ASPA). Sampling milk from cattle is below the threshold of pain, suffering, distress or lasting harm that requires A(SP)A licensing and the procedure was reviewed by the Veterinary Ethical Review Committee of the Royal Dick School of Veterinary Studies (RDSVS), Edinburgh University.

AUTHOR CONTRIBUTIONS

PK, ET, LB, SE, and TC conceived, designed and coordinated the study. ME, LB, TC, CV, SJ, MV, EM, and TC designed and performed experiments, processed samples, and analyzed the data. JM, LL, and DF generated 5-OP-RU. LB, ME, and SE prepared the manuscript and figures. All authors reviewed the manuscript and approved the submitted version.

FUNDING

This work was funded by the UK Biotechnology and Biological Sciences Research Council (BBSRC, Grant numbers BB N004647/1, BBS/E/I/00007031, BBS/E/I/00007038 and

BBS/E/I/00007039) and the bovine tuberculosis research budget held and administered centrally by the UK Department for Environment, Food and Rural affairs on behalf of England, Scotland and Wales (Project Code SE3299). Work performed at the University of Oxford was supported by the Wellcome Trust (WT109965MA), NIHR Senior Fellowship (PK). Work at the Roslin Institute is supported by Strategic Program Grants from the BBSRC. SE was supported by an Australian Research Council DECRA fellowship (DE170100407) and an Australian National Health and Medical Research Council Project grant (APP1157388). DF is supported by a Senior Principal Research Fellowship (1117017) from the Australian Research Council (CE140100011) and National Health and Medical Research Council of Australia (NHMRC).

REFERENCES

- Martin E, Treiner E, Duban L, Guerri L, Laude H, Toly C, et al. Stepwise development of MAIT cells in mouse and human. *PLoS Biol.* (2009) 7:e1000054. doi: 10.1371/journal.pbio.1000054
- Kurioka A, Walker LJ, Klenerman P, Willberg CB. MAIT cells: new guardians of the liver. *Clin Transl Immunol.* (2016) 5:e98. doi: 10.1038/cti.2016.51
- Tang XZ, Jo J, Tan AT, Sandalova E, Chia A, Tan KC, et al. IL-7 licenses activation of human liver intrasinusoidal mucosal-associated invariant T cells. *J Immunol.* (2013) 190:3142–52. doi: 10.4049/jimmunol.1203218
- Godfrey DI, Uldrich AP, McCluskey J, Rossjohn J, Moody DB. The burgeoning family of unconventional T cells. *Nat Immunol.* (2015) 16:1114–23. doi: 10.1038/ni.3298
- Treiner E, Duban L, Bahram S, Radosavljevic M, Wanner V, Tilloy F, et al. Selection of evolutionarily conserved mucosal-associated invariant T cells by MR1. *Nature.* (2003) 422:164–9. doi: 10.1038/nature01433
- Patel O, Kjer-Nielsen L, Le Nours J, Eckle SB, Birkinshaw R, Beddoe T, et al. Recognition of vitamin B metabolites by mucosal-associated invariant T cells. *Nat Commun.* (2013) 4:2142. doi: 10.1038/ncomms3142
- Kjer-Nielsen L, Patel O, Corbett AJ, Le Nours J, Meehan B, Liu L, et al. MR1 presents microbial vitamin B metabolites to MAIT cells. *Nature.* (2012) 491:717–23. doi: 10.1038/nature11605
- Corbett AJ, Eckle SB, Birkinshaw RW, Liu L, Patel O, Mahony J, et al. T-cell activation by transitory neo-antigens derived from distinct microbial pathways. *Nature.* (2014) 509:361–5. doi: 10.1038/nature13160
- Mak JYW, Xu W, Reid RC, Corbett AJ, Meehan BS, Wang H, et al. Stabilizing short-lived Schiff base derivatives of 5-aminouracils that activate mucosal-associated invariant T cells. *Nat Commun.* (2017) 8:14599. doi: 10.1038/ncomms14599
- de Lima Moreira M, Souter MNT, Chen Z, Loh L, McCluskey J, Pellicci DG, et al. Hypersensitivities following allergen antigen recognition by unconventional T cells. *Allergy.* (2020) 75:2477–90. doi: 10.1111/all.14279
- Meierovics A, Yankelevich W-JC, Cowley SC. MAIT cells are critical for optimal mucosal immune responses during in vivo pulmonary bacterial infection. *Proc Natl Acad Sci USA.* (2013) 110:E3119–E28. doi: 10.1073/pnas.1302799110
- Wang H, D'Souza C, Lim XY, Kostenko L, Pediongco TJ, Eckle SBG, et al. MAIT cells protect against pulmonary *Legionella longbeachae* infection. *Nat Commun.* (2018) 9:3350.
- Gold MC, Napier RJ, Lewinsohn DM. MR1-restricted mucosal associated invariant T (MAIT) cells in the immune response to *Mycobacterium tuberculosis*. *Immunol Rev.* (2015) 264:154–66. doi: 10.1111/imr.12271
- Vorkas CK, Wipperman MF, Li K, Bean J, Bhattacharai SK, Adamow M, et al. Mucosal-associated invariant and $\gamma\delta$ T cell subsets respond to initial *Mycobacterium tuberculosis* infection. *JCI Insight.* (2018) 3:e121899. doi: 10.1172/jci.insight.121899

ACKNOWLEDGMENTS

We are grateful to the staff of the Dryden farm of the Roslin Institute and the animal staff at the APHA for their invaluable help with the animal experiments. We also thank the Pirbright flow cytometry facility (National capability science services) for their support with flow cytometry and the Roslin Institute Veterinary Immunological Toolbox facility for support with monoclonal antibody production.

SUPPLEMENTARY MATERIAL

The Supplementary Material for this article can be found online at: <https://www.frontiersin.org/articles/10.3389/fimmu.2021.627173/full#supplementary-material>

- Tsukamoto K, Deakin JE, Graves JAM, Hashimoto K. Exceptionally high conservation of the MHC class I-related gene, MR1, among mammals. *Immunogenetics.* (2013) 65:115–24. doi: 10.1007/s00251-012-0666-5
- Boudinot P, Mondot S, Jouneau L, Teyton L, Lefranc MP, Lantz O. Restricting nonclassical MHC genes coevolve with TRAV genes used by innate-like T cells in mammals. *Proc Natl Acad Sci USA.* (2016) 113:E2983–92. doi: 10.1073/pnas.1600674113
- Hashimoto K, Hirai M, Kurosawa Y. A gene outside the human MHC related to classical HLA class I genes. *Science.* (1995) 269:693. doi: 10.1126/science.7624800
- Yamaguchi H, Hirai M, Kurosawa Y, Hashimoto K. A highly conserved major histocompatibility complex class I-related gene in mammals. *Biochem Biophys Res Commun.* (1997) 238:697–702. doi: 10.1006/bbrc.1997.7379
- Riepert P, Wanner V, Bahram S. Genomics, isoforms, expression, and phylogeny of the MHC class I-related MR1 gene. *J Immunol.* (1998) 161:4066–77.
- Reantragoon R, Corbett AJ, Sakala IG, Gherardin NA, Furness JB, Chen Z, et al. Antigen-loaded MR1 tetramers define T cell receptor heterogeneity in mucosal-associated invariant T cells. *J Exp Med.* (2013) 210:2305–20. doi: 10.1084/jem.20130958
- Tilloy F, Treiner E, Park SH, Garcia C, Lemonnier F, de la Salle H, et al. An invariant T cell receptor alpha chain defines a novel TAP-independent major histocompatibility complex class Ib-restricted alpha/beta T cell subpopulation in mammals. *J Exp Med.* (1999) 189:1907–21. doi: 10.1084/jem.189.12.1907
- Lepore M, Kalinichenko A, Colone A, Paleja B, Singhal A, Tschumi A, et al. Parallel T-cell cloning and deep sequencing of human MAIT cells reveal stable oligoclonal TCR β repertoire. *Nat Commun.* (2014) 5:3866. doi: 10.1038/ncomms4866
- Porcelli S, Yockey CE, Brenner MB, Balk SP. Analysis of T cell antigen receptor (TCR) expression by human peripheral blood CD4-8- alpha/beta T cells demonstrates preferential use of several V beta genes and an invariant TCR alpha chain. *J Exp Med.* (1993) 178:1–16. doi: 10.1084/jem.178.1.1
- Goldfinch N, Reinink P, Connelley T, Koets A, Morrison I, Van Rhijn I. Conservation of mucosal associated invariant T (MAIT) cells and the MR1 restriction element in ruminants, and abundance of MAIT cells in spleen. *Vet Res.* (2010) 41:62. doi: 10.1051/vetres/2010034
- Xiao X, Li K, Ma X, Liu B, He X, Yang S, et al. Mucosal-associated invariant T cells expressing the TRAV1-TRAJ33 chain are present in pigs. *Front Immunol.* (2019) 10:70. doi: 10.3389/fimmu.2019.02070
- Greene JM, Dash P, Roy S, McMurtrey C, Awad W, Reed JS, et al. MR1-restricted mucosal-associated invariant T (MAIT) cells respond to mycobacterial vaccination and infection in nonhuman primates. *Mucosal Immunol.* (2017) 10:802–13. doi: 10.1038/mi.2016.91
- Koay H-F, Godfrey DI, Pellicci DG. Development of mucosal-associated invariant T cells. *Immunol Cell Biol.* (2018) 96:598–606. doi: 10.1111/imcb.12039

28. Koay H-F, Gherardin NA, Enders A, Loh L, Mackay LK, Almeida CF, et al. A three-stage intrathymic development pathway for the mucosal-associated invariant T cell lineage. *Nat Immunol.* (2016) 17:1300–11. doi: 10.1038/ni.3565
29. van Wilgenburg B, Loh L, Chen Z, Pediongo TJ, Wang H, Shi M, et al. MAIT cells contribute to protection against lethal influenza infection in vivo. *bioRxiv.* (2018) 9:4706. doi: 10.1101/247205
30. Le Bourhis L, Martin E, Peguillet I, Guihot A, Froux N, Core M, et al. Antimicrobial activity of mucosal-associated invariant T cells. *Nat Immunol.* (2010) 11:701–8. doi: 10.1038/ni.1890
31. D'Souza C, Chen Z, Corbett AJ. Revealing the protective and pathogenic potential of MAIT cells. *Mol Immunol.* (2018) 103:46–54. doi: 10.1016/j.molimm.2018.08.022
32. Constantinides MG, Link VM, Tamoutounour S, Wong AC, Perez-Chaparro PJ, Han S-J, et al. MAIT cells are imprinted by the microbiota in early life and promote tissue repair. *Science.* (2019) 366:eaax6624. doi: 10.1126/science.aax6624
33. Waters WR, Palmer MV, Thacker TC, Davis WC, Sreevatsan S, Coussens P, et al. Tuberculosis immunity: opportunities from studies with cattle. *Clin Dev Immunol.* (2011) 2011:768542. doi: 10.1155/2011/768542
34. Van Rhijn I, Godfroid J, Michel A, Rutten V. Bovine tuberculosis as a model for human tuberculosis: advantages over small animal models. *Microbes Infect.* (2008) 10:711–5. doi: 10.1016/j.micinf.2008.04.005
35. Blodörn K, Häggglund S, Gavner-Widen D, Eléouët J-F, Riffault S, Pringle J, et al. A bovine respiratory syncytial virus model with high clinical expression in calves with specific passive immunity. *BMC Vet Res.* (2015) 11:76. doi: 10.1186/s12917-015-0389-6
36. Huang S, Martin E, Kim S, Yu L, Soudais C, Fremont DH, et al. MR1 antigen presentation to mucosal-associated invariant T cells was highly conserved in evolution. *Proc Natl Acad Sci USA.* (2009) 106:8290–5. doi: 10.1073/pnas.0903196106
37. Rahimpour A, Koay HF, Enders A, Clanchy R, Eckle SBG, Meehan B, et al. Identification of phenotypically and functionally heterogeneous mouse mucosal-associated invariant T cells using MR1 tetramers. *J Exp Med.* (2015) 212:1095–108. doi: 10.1084/jem.20142110
38. Chen Z, Wang H, D'Souza C, Sun S, Kostenko L, Eckle SBG, et al. Mucosal-associated invariant T-cell activation and accumulation after in vivo infection depends on microbial riboflavin synthesis and co-stimulatory signals. *Mucosal Immunol.* (2017) 10:58–68. doi: 10.1038/mi.2016.39
39. Gherardin NA, Souter MNT, Koay HF, Mangas KM, Seemann T, Stinear TP, et al. Human blood MAIT cell subsets defined using MR1 tetramers. *Immunol Cell Biol.* (2018) 96:507–25. doi: 10.1111/imcb.12021
40. Juno JA, Wragg KM, Amarasena T, Meehan BS, Mak JYW, Liu L, et al. MAIT cells upregulate $\alpha 4\beta 7$ in response to acute simian immunodeficiency virus/simian HIV infection but are resistant to peripheral depletion in pigtail macaques. *J Immunol.* (2019) 202:2105. doi: 10.4049/jimmunol.1801405
41. Eckle SB, Birkinshaw RW, Kostenko L, Corbett AJ, McWilliam HE, Reantragoon R, et al. A molecular basis underpinning the T cell receptor heterogeneity of mucosal-associated invariant T cells. *J Exp Med.* (2014) 211:1585–600. doi: 10.1084/jem.20140484
42. Souter MNT, Loh L, Li S, Meehan BS, Gherardin NA, Godfrey DI, et al. Characterization of human mucosal-associated invariant T (MAIT) cells. *Curr Protoc Immunol.* (2019) 127:e90. doi: 10.1002/cpim.90
43. Benedictus L, Steinbach S, Holder T, Bakker D, Vrettou C, Morrison WI, et al. Hydrophobic mycobacterial antigens elicit polyfunctional T cells in Mycobacterium bovis immunised cattle: Association with protection against challenge? *Front Immunol.* (2020) 11:588180. doi: 10.3389/fimmu.2020.588180
44. Vordermeier HM, Chambers MA, Cockle PJ, Whelan AO, Simmons J, Hewinson RG. Correlation of ESAT-6-specific gamma interferon production with pathology in cattle following Mycobacterium bovis BCG vaccination against experimental bovine tuberculosis. *Infect Immun.* (2002) 70:3026–32. doi: 10.1128/IAI.70.6.3026-3032.2002
45. Bolotin DA, Poslavsky S, Mitrophanov I, Shugay M, Mamedov IZ, Putintseva EV, et al. MiXCR: software for comprehensive adaptive immunity profiling. *Nat Methods.* (2015) 12:380–1. doi: 10.1038/nmeth.3364
46. Connelley T, Aerts J, Law A, Morrison WI. Genomic analysis reveals extensive gene duplication within the bovine TRB locus. *BMC Genomics.* (2009) 10:192. doi: 10.1186/1471-2164-10-192
47. Connelley TK, Degnan K, Longhi CW, Morrison WI. Genomic analysis offers insights into the evolution of the bovine TRA/TRD locus. *BMC Genomics.* (2014) 15:994. doi: 10.1186/1471-2164-15-994
48. Dusseaux M, Martin E, Serriari N, Peguillet I, Premel V, Louis D, et al. Human MAIT cells are xenobiotic-resistant, tissue-targeted, CD161hi IL-17-secreting T cells. *Blood.* (2011) 117:1250–9. doi: 10.1182/blood-2010-08-303339
49. McGill JL, Sacco RE, Baldwin CL, Telfer JC, Palmer MV, Ray Waters W. The role of gamma delta T cells in immunity to Mycobacterium bovis infection in cattle. *Vet Immunol Immunopathol.* (2014) 159:133–43. doi: 10.1016/j.vetimm.2014.02.010
50. Le Nours J, Gherardin NA, Ramarathinam SH, Awad W, Wiede F, Gully BS, et al. A class of gammadelta T cell receptors recognize the underside of the antigen-presenting molecule MR1. *Science.* (2019) 366:1522–7. doi: 10.1126/science.aav3900
51. José ES, Borroto A, Niedergang F, Alcover A, Alarcón B. Triggering the TCR complex causes the downregulation of nonengaged receptors by a signal transduction-dependent mechanism. *Immunity.* (2000) 12:161–70. doi: 10.1016/S1074-7613(00)80169-7
52. Keller AN, Eckle SB, Xu W, Liu L, Hughes VA, Mak JY, et al. Drugs and drug-like molecules can modulate the function of mucosal-associated invariant T cells. *Nat Immunol.* (2017) 18:402–11. doi: 10.1038/ni.3679
53. van Wilgenburg B, Scherwitzl I, Hutchinson EC, Leng TQ, Kurioka A, Kulicke C, et al. MAIT cells are activated during human viral infections. *Nat Commun.* (2016) 7:11. doi: 10.1038/ncomms11653
54. Reantragoon R, Kjer-Nielsen L, Patel O, Chen Z, Illing PT, Bhati M, et al. Structural insight into MR1-mediated recognition of the mucosal associated invariant T cell receptor. *J Exp Med.* (2012) 209:761. doi: 10.1084/jem.20112095
55. Gold MC, McLaren JE, Reistetter JA, Smyk-Pearson S, Ladell K, Swarbrick GM, et al. MR1-restricted MAIT cells display ligand discrimination and pathogen selectivity through distinct T cell receptor usage. *J Exp Med.* (2014) 211:1601–10. doi: 10.1084/jem.20140507
56. Held K, Bhonsle-Deeng L, Siewert K, Sato W, Beltrán E, Schmidt S, et al. $\alpha\beta$ T-cell receptors from multiple sclerosis brain lesions show MAIT cell-related features. *Neurol Neuroimmunol Neuroinflamm.* (2015) 2:e107. doi: 10.1212/NXI.0000000000000107
57. Gold MC, Cerri S, Smyk-Pearson S, Cansler ME, Vogt TM, Delepine J, et al. Human mucosal associated invariant T cells detect bacterially infected cells. *PLoS Biol.* (2010) 8:e1000407. doi: 10.1371/journal.pbio.1000407
58. Souter MNT, Eckle SBG. Biased MAIT TCR Usage Poised for Limited Antigen Diversity? *Front Immunol.* (2020) 11. doi: 10.3389/fimmu.2020.01845
59. Voillet V, Buggert M, Slichter CK, Berkson JD, Mair F, Addison MM, et al. Human MAIT cells exit peripheral tissues and recirculate via lymph in steady state conditions. *JCI Insight.* (2018) 3. doi: 10.1172/jci.insight.98487
60. Vrieling M, Santema W, Van Rhijn I, Rutten V, Koets A. gammadelta T cell homing to skin and migration to skin-draining lymph nodes is CCR7 independent. *J Immunol.* (2012) 188:578–84. doi: 10.4049/jimmunol.1101972
61. Petersson-Wolfe CS, Leslie KE, Swartz TH. An update on the effect of clinical mastitis on the welfare of dairy cows and potential therapies. *Vet Clin North Am Food Anim Pract.* (2018) 34:525–35. doi: 10.1016/j.cvfa.2018.07.006
62. Harp JA, Waters TE, Goff JP. Lymphocyte subsets and adhesion molecule expression in milk and blood of periparturient dairy cattle. *Vet Immunol Immunopathol.* (2004) 102:9–17. doi: 10.1016/j.vetimm.2004.05.006
63. Paape MJ, Bannerman DD, Zhao X, Lee JW. The bovine neutrophil: Structure and function in blood and milk. *Vet Res.* (2003) 34:597–627. doi: 10.1051/vetres:2003024
64. van den Borne BH, van Schaik G, Lam TJ, Nielen M. Variation in herd level mastitis indicators between primi- and multiparae in Dutch dairy herds. *Prev Vet Med.* (2010) 96:49–55. doi: 10.1016/j.prevetmed.2010.05.010
65. Kurioka A, Ussher JE, Cosgrove C, Clough C, Fergusson JR, Smith K, et al. MAIT cells are licensed through granzyme exchange to kill bacterially sensitized targets. *Mucosal Immunol.* (2015) 8:429–40. doi: 10.1038/mi.2014.81
66. Suliman S, Murphy M, Musvosvi M, Gela A, Meermeier EW, Geldenhuis H, et al. MR1-Independent Activation of Human Mucosal-Associated Invariant T Cells by Mycobacteria. *J Immunol.* (2019) 203:2917–27. doi: 10.4049/jimmunol.1900674

67. Rainard P, Riollot C. Mobilization of neutrophils and defense of the bovine mammary gland. *Reprod Nutr Dev.* (2003) 43:439–57. doi: 10.1051/rnd:2003031
68. Keane OM. Symposium review: Intramammary infections-Major pathogens and strain-associated complexity. *J Dairy Sci.* (2019) 102:4713–26. doi: 10.3168/jds.2018-15326
69. Shaler CR, Choi J, Rudak PT, Memarnejadian A, Szabo PA, Tun-Abraham ME, et al. MAIT cells launch a rapid, robust and distinct hyperinflammatory response to bacterial superantigens and quickly acquire an anergic phenotype that impedes their cognate antimicrobial function: Defining a novel mechanism of superantigen-induced immunopathology and immunosuppression. *PLoS Biol.* (2017) 15:e2001930. doi: 10.1371/journal.pbio.2001930
70. Reber AJ, Hippen AR, Hurley DJ. Effects of the ingestion of whole colostrum or cell-free colostrum on the capacity of leukocytes in newborn calves to stimulate or respond in one-way mixed leukocyte cultures. *Am J Vet Res.* (2005) 66:1854–60. doi: 10.2460/ajvr.2005.66.1854
71. Laquar, A. Maternal leukocytes and infant immune programming during breastfeeding. *Trend Immunol.* (2020) 41:225–39. doi: 10.1016/j.it.2020.01.005
72. Cabinian A, Sinsimer D, Tang M, Zumba O, Mehta H, Toma A, et al. Transfer of maternal immune cells by breastfeeding: maternal cytotoxic T lymphocytes present in breast milk localize in the Peyer's patches of the nursed infant. *PLoS ONE.* (2016) 11:e0156762. doi: 10.1371/journal.pone.0156762
73. Bedin A-S, Molès J-P, Rutagwera D, Nagot N, Kankasa C, Tylleskär T, et al. MAIT cells, TCR $\gamma\delta$ + cells and ILCs cells in human breast milk and blood from HIV infected and uninfected women. *Pediatr Allergy Immunol.* (2019) 30:479–87. doi: 10.1111/pai.13037
74. Van Rhijn I, Moody DB. Donor unrestricted T cells: a shared human T cell response. *J Immunol.* (2015) 195:1927. doi: 10.4049/jimmunol.1500943
75. Chua W-J, Truscott SM, Eickhoff CS, Blazevic A, Hoft DF, Hansen TH. Polyclonal mucosa-associated invariant T cells have unique innate functions in bacterial infection. *Infect Immun.* (2012) 80:3256–67. doi: 10.1128/IAI.00279-12
76. Darrah PA, Zeppa JJ, Maiello P, Hackney JA, Wadsworth MH, Hughes TK, et al. Prevention of tuberculosis in macaques after intravenous BCG immunization. *Nature.* (2020) 577:95–102. doi: 10.1038/s41586-019-1817-8
77. Sakai S, Kauffman KD, Oh S, Nelson CE, Barry CE, Barber DL. MAIT cell-directed therapy of Mycobacterium tuberculosis infection. *Mucosal Immunol.* (2020) 14:199–208. doi: 10.1038/s41385-020-0332-4

Conflict of Interest: SE, JM, LL, and DF are inventors on patents describing MRI tetramers and MRI–ligand complexes.

The remaining authors declare that the research was conducted in the absence of any commercial or financial relationships that could be construed as a potential conflict of interest.

Copyright © 2021 Edmans, Connelley, Jayaraman, Vrettou, Vordermeier, Mak, Liu, Fairlie, Maze, Chrun, Klenerman, Eckle, Tchilian and Benedictus. This is an open-access article distributed under the terms of the Creative Commons Attribution License (CC BY). The use, distribution or reproduction in other forums is permitted, provided the original author(s) and the copyright owner(s) are credited and that the original publication in this journal is cited, in accordance with accepted academic practice. No use, distribution or reproduction is permitted which does not comply with these terms.