

Minerva Access is the Institutional Repository of The University of Melbourne

Author/s:

Cardwell, CR;Stene, LC;Ludvigsson, J;Rosenbauer, J;Cinek, O;Svensson, J;Perez-Bravo, F;Memon, A;Gimeno, SG;Wadsworth, EJK;Strotmeyer, ES;Goldacre, MJ;Radon, K;Chuang, LM;Parslow, RC;Chetwynd, A;Karavanaki, K;Brigis, G;Pozzilli, P;Urbonaite, B;Schober, E;Devoti, G;Sipetic, S;Joner, G;Ionescu-Tirgoviste, C;De Beaufort, CE;Harrild, K;Benson, V;Savilahti, E;Ponsonby, AL;Salem, M;Rabiei, S;Patterson, CC

Title:

Breast-feeding and childhood-onset type 1 diabetes: A pooled analysis of individual participant data from 43 observational studies

Date:

2012-11-01

Citation:

Cardwell, C. R., Stene, L. C., Ludvigsson, J., Rosenbauer, J., Cinek, O., Svensson, J., Perez-Bravo, F., Memon, A., Gimeno, S. G., Wadsworth, E. J. K., Strotmeyer, E. S., Goldacre, M. J., Radon, K., Chuang, L. M., Parslow, R. C., Chetwynd, A., Karavanaki, K., Brigis, G., Pozzilli, P., ... Patterson, C. C. (2012). Breast-feeding and childhood-onset type 1 diabetes: A pooled analysis of individual participant data from 43 observational studies. *Diabetes Care*, 35 (11), pp.2215-2225. <https://doi.org/10.2337/dc12-0438>.

Persistent Link:

<https://hdl.handle.net/11343/265238>

License:

[CC BY-NC-ND](#)

Breast-Feeding and Childhood-Onset Type 1 Diabetes

A pooled analysis of individual participant data from 43 observational studies

CHRIS R. CARDWELL, PHD¹
 LARS C. STENE, PHD^{2,3}
 JOHNNY LUDVIGSSON, MD, PHD⁴
 JOACHIM ROSENBAUER, MD, DIPL MATH⁵
 ONDREJ CINEK, MD, PHD⁶
 JANNET SVENSSON, PHD⁷
 FRANCISCO PEREZ-BRAVO, PHD⁸
 ANJUM MEMON, MBBS, DPHIL⁹
 SUELY G. GIMENO, DPH¹⁰
 EMMA J.K. WADSWORTH, PHD¹¹
 ELSA S. STROTMEYER, PHD¹²
 MICHAEL J. GOLDACRE, FFFPM¹³
 KATJA RADON, PHD¹⁴
 LEE-MING CHUANG, MD, PHD¹⁵
 ROGER C. PARSLow, PHD¹⁶
 AMANDA CHETWYND, PHD¹⁷
 KYRIAKI KARAVANAKI, MD, PHD¹⁸

GIRTS BRIGIS, MD, PHD¹⁹
 PAOLO POZZILLI, MBBS, MD²⁰
 BRONE URBONAITÉ, MD, PHD²¹
 EDITH SCHOBER, MD²²
 GABRIELE DEVOTI, MD²³
 SANDRA SIPETIC, MD, PHD²⁴
 GEIR JONER, MD, PHD^{25,26}
 CONSTANTIN IONESCU-TIRGOVISTE, MD, PHD²⁷
 CARINE E. DE BEAUFORT, MD, PHD²⁸
 KIRSTEN HARRILD, MSc²⁹
 VICTORIA BENSON, PHD³⁰
 ERKKI SAVILAHTI, MD, PHD³¹
 ANNE-LOUISE PONSONBY, MBBS, PHD³²
 MONA SALEM, MD³³
 SAMIRA RABIEI, MSc³⁴
 CHRIS C. PATTERSON, PHD¹

Childhood type 1 diabetes is caused by the autoimmune destruction of the pancreatic β -cells. The increases in type 1 diabetes incidence in recent decades (1) and the concordance rate of <50% in monozygotic twins (2) suggests a role for environmental factors in the development of diabetes. The proportional greater relative increases in incidence in children <5 years old (1) indicates that environmental exposures in early life, such as infant feeding, could play an important role.

In 1994, a meta-analysis (3) concluded that breast-feeding for a short period reduced the risk of type 1 diabetes by 40%, but another meta-analysis in 1996 (4), largely containing the same studies, concluded that the weak reduction in diabetes risk after breast-feeding was small and may have methodological explanations. However, both these meta-analyses had limitations. The associations with type 1 diabetes (extracted from published studies) were based upon categorized durations of breast-feeding, which differed between studies. Furthermore, in these meta-analyses, it was not possible to adjust the association between breast-feeding and type 1 diabetes consistently for potential confounders (factors such as maternal age, birth weight, and maternal diabetes that were associated with both diabetes risk and the propensity to breast-feed). Also, studies that recorded breast-feeding results but did not report them in sufficient detail were excluded, potentially exaggerating any breast-feeding association through reporting bias. These weaknesses were largely because both were literature-based meta-analyses (based only upon

OBJECTIVE—To investigate if there is a reduced risk of type 1 diabetes in children breastfed or exclusively breastfed by performing a pooled analysis with adjustment for recognized confounders.

RESEARCH DESIGN AND METHODS—Relevant studies were identified from literature searches using MEDLINE, Web of Science, and EMBASE. Authors of relevant studies were asked to provide individual participant data or conduct prespecified analyses. Meta-analysis techniques were used to combine odds ratios (ORs) and investigate heterogeneity between studies.

RESULTS—Data were available from 43 studies including 9,874 patients with type 1 diabetes. Overall, there was a reduction in the risk of diabetes after exclusive breast-feeding for >2 weeks (20 studies; OR = 0.75, 95% CI 0.64–0.88), the association after exclusive breast-feeding for >3 months was weaker (30 studies; OR = 0.87, 95% CI 0.75–1.00), and no association was observed after (nonexclusive) breast-feeding for >2 weeks (28 studies; OR = 0.93, 95% CI 0.81–1.07) or >3 months (29 studies; OR = 0.88, 95% CI 0.78–1.00). These associations were all subject to marked heterogeneity ($I^2 = 58, 76, 54$, and 68%, respectively). In studies with lower risk of bias, the reduced risk after exclusive breast-feeding for >2 weeks remained (12 studies; OR = 0.86, 95% CI 0.75–0.99), and heterogeneity was reduced ($I^2 = 0\%$). Adjustments for potential confounders altered these estimates very little.

CONCLUSIONS—The pooled analysis suggests weak protective associations between exclusive breast-feeding and type 1 diabetes risk. However, these findings are difficult to interpret because of the marked variation in effect and possible biases (particularly recall bias) inherent in the included studies.

Diabetes Care 35:2215–2225, 2012

From the ¹School of Medicine and Dentistry, Queen's University Belfast, Belfast, U.K.; the ²Division of Epidemiology, Norwegian Institute of Public Health, Oslo, Norway; the ³Oslo Diabetes Research Centre, Oslo University Hospital, Oslo, Norway; the ⁴Department of Clinical Experimental Medicine, Division of Pediatrics, Linköping University Hospital, Linköping, Sweden; the ⁵Institute of Biometrics and Epidemiology, German Diabetes Centre, Leibniz Institute at Duesseldorf University, Duesseldorf, Germany; the ⁶Department of

Paediatrics, 2nd Faculty of Medicine, Charles University in Prague and University Hospital Motol, Motol, Czech Republic; the ⁷Pediatric Department, Herlev University Hospital, Herlev, Denmark; the ⁸Department of Nutrition, Faculty of Medicine, Laboratory of Nutritional Genomics, University of Chile, Santiago, Chile; the ⁹Division of Primary Care and Public Health, Brighton and Sussex Medical School and NHS Brighton and Hove, Brighton, U.K.; the ¹⁰Preventive Medicine Department, Federal University of São Paulo, São

Paulo, Brazil; the ¹¹Cardiff Work Environment Research Centre, Cardiff University, Cardiff, U.K.; the ¹²Department of Epidemiology, Graduate School of Public Health, Center for Aging and Population Health, University of Pittsburgh, Pittsburgh, Pennsylvania; the ¹³Department of Public Health, Oxford University, Oxford, U.K.; the ¹⁴Institute and Outpatient Clinic for Occupational and Environmental Medicine, Hospital of the Ludwig Maximilian University Munich, Munich, Germany; the ¹⁵Department of Internal

reported associations in published studies) rather than collaborative meta-analyses or pooled analyses (using individual participant data from included studies after contacting authors of articles containing relevant data) (5). Since the publication of these two meta-analyses, many additional observational studies have investigated breast-feeding and type 1 diabetes, allowing a new meta-analysis to be conducted on an independent group of more recent studies.

The aim of this study was to assess the evidence of an association between duration of breast-feeding (and exclusive breast-feeding) and type 1 diabetes using collaborative meta-analysis techniques from observational studies published since 1996. Importantly, this pooled analysis includes individual participant data, allowing consistent categorization of breast-feeding across studies and adjustment for potential confounders such as maternal age, birth weight, and maternal diabetes and will also include studies investigating breast-feeding but not reporting detailed results.

RESEARCH DESIGN AND METHODS

Literature search

The main literature search was conducted using MEDLINE through Ovid Online. The search was adapted from a previous study (6) and comprised search terms for infant feeding consisting of text words (including breast fed, breast feed, breast feeds, breast feeding, breast milk, bottle fed, bottle feed, bottle feeds, bottle feeding, infant feed, infant feeds, infant feeding, infant nutrition, formula fed, formula feed, formula feeds, formula feeding, infant diet, infant diets, dried milk, and early nutrition) or MEDLINE subject heading key words (including breast

feeding, bottle feeding, milk, human, infant food, and infant formula) and terms for type 1 diabetes including the text words (IDDD or [diabetes and type 1]) or the MEDLINE subject heading key word "diabetes mellitus, type 1." Similar searches were conducted on Web of Science and EMBASE. The searches were limited to studies on humans published after January 1996 [to avoid overlap with two previous meta-analyses (3,4)] up to 1 May 2011. No language restrictions were applied. Titles and then abstracts were screened independently by two investigators (C.R.C. and C.C.P.) to establish if the studies were likely to provide relevant data based on the following inclusion criteria: 1) they identified a group with type 1 diabetes and a group without type 1 diabetes, and 2) they recorded breast-feeding in these groups. Studies were excluded if they contained <20 patients with diabetes or if they were family-based (because the association between infant feeding and type 1 diabetes may be different in individuals with a strong genetic susceptibility). The corresponding author of each included article was asked if they were aware of any additional studies.

The corresponding author of each study was contacted to provide individual participant data to allow breast-feeding to be consistently categorized across studies, standardize adjustment of the association with breast-feeding for potential confounders (including maternal diabetes, birth weight, gestational age, maternal age, birth order, Caesarean section, and socioeconomic status), and include data from studies that did not report detailed findings. Authors were requested to provide raw data or to provide adjusted estimates of the association between breast-feeding and type 1 diabetes after conducting specified additional analyses.

Details of each study were extracted by one reviewer (C.R.C.) and agreed with the study author.

Statistical analysis

A two-stage technique was used to calculate pooled estimates of the association between breast-feeding and diabetes, before and after adjustment for potential confounders (7). Odds ratios (ORs) and SEs were calculated for the association between diabetes and breast-feeding within each study. Unconditional and conditional logistic regression was used to calculate the ORs and SEs for the unmatched and matched case-control studies, respectively. In cohort studies with varying length of participant follow-up, rate ratios and their SEs were used instead of ORs, which were not directly calculable. As type 1 diabetes is a rare disease, these measures should be approximately equal. In one study (8) with a zero cell count for an exposure category, a correction was added to obtain an estimate and SE for use in the meta-analysis. In another study, an additional adjustment was always made for the perinatal cohort entry score to reflect the study design (9). Finally, in studies for which no author could be contacted or data were not available, if possible, required estimates were extracted from published reports. Meta-analysis techniques were then applied to these estimates. Tests for heterogeneity between studies were conducted and random-effects models used to calculate pooled ORs. Random-effects models were used, instead of fixed-effects models, because between-study heterogeneity was anticipated from these observational studies. The I^2 statistic was calculated to quantify the degree of heterogeneity between studies. Small study effects (possibly due to publication bias) were investigated by checking for asymmetry in funnel plots



Medicine, National Taiwan University Hospital, Taipei, Taiwan; the ¹⁶Paediatric Epidemiology Group, University of Leeds, Leeds, U.K.; the ¹⁷Mathematics and Statistics Department, Lancaster University, Lancaster, U.K.; the ¹⁸Second University Department of Pediatrics, National and Kapodistrian University of Athens School of Medicine, Athens, Greece; the ¹⁹Department of Public Health and Epidemiology, Riga Stradins University, Riga, Latvia; the ²⁰University Campus Bio-Medico, Rome, Italy; the ²¹Institute of Endocrinology of Lithuanian University of Health Science, Kaunas, Lithuania; the ²²Department of Paediatrics, Medical University of Vienna, Vienna, Austria; the ²³Department of Social Sciences and Communication, University of Salento, Lecce, Italy; the ²⁴School of Medicine, Institute of Epidemiology, Belgrade

University, Belgrade, Serbia; the ²⁵Faculty of Medicine, Institute of Health and Society, University of Oslo, Oslo, Norway; the ²⁶Department of Paediatrics, Oslo University Hospital, Oslo, Norway; the ²⁷Nutrition and Metabolic Diseases Clinic, N. Paulescu Institute of Diabetes, Bucharest, Romania; the ²⁸Clinique Pédiatrique Luxembourg, Luxembourg City, Luxembourg; the ²⁹Medical Statistics Team, University of Aberdeen, Aberdeen, U.K.; the ³⁰Cancer Epidemiology Unit, University of Oxford, Oxford, U.K.; the ³¹Hospital for Children and Adolescents, University of Helsinki, Helsinki, Finland; the ³²Murdoch Children's Research Institute, The Royal Children's Hospital, Melbourne, Australia; the ³³Paediatrics Department, Ain Shams University, Cairo, Egypt; and the ³⁴Faculty of Nutrition

Sciences and Food Technology, Shahid Beheshti University of Medical Sciences and Health Services, Tehran, Iran.

Corresponding author: Chris R. Cardwell, c.cardwell@qub.ac.uk.

Received 5 March 2012 and accepted 9 May 2012.

DOI: 10.2337/dc12-0438

This article contains Supplementary Data online at <http://care.diabetesjournals.org/lookup/suppl/doi:10.2337/dc12-0438/-DC1>.

A slide set summarizing this article is available online.

© 2012 by the American Diabetes Association.

Readers may use this article as long as the work is properly cited, the use is educational and not for profit, and the work is not altered. See <http://creativecommons.org/licenses/by-nc-nd/3.0/> for details.

of the study ORs against one over the SE of the logarithm of the ORs.

Similar methods were conducted to pool adjusted estimates. First, adjusted estimates and SEs were calculated within each study using regression models appropriate to the study design including diabetes as the outcome variable and breast-feeding and the potential confounder(s) of interest as explanatory variable(s). Meta-analysis techniques were then applied to these adjusted estimates.

The analysis was initially conducted based upon a priori categorizations of non-exclusive and exclusive breast-feeding ≥ 2 weeks versus breast-feeding < 2 weeks and was repeated for nonexclusive breast-feeding ≥ 3 months versus breast-feeding < 3 months in which these data or similar were available. Subgroup analyses were also conducted including only studies with a low risk of bias based upon high response rates ($> 70\%$) in both cases and controls and the use of randomly selected population-based controls. Subgroup analysis was also performed by age at diagnosis of diabetes, geographic region, and incidence rate based upon a published summary of worldwide incidence (10).

All statistical analyses were performed using STATA 11.0 (Stata, College Station, TX).

RESULTS

Search results

The results from the literature search are shown in Supplementary Fig. 1. Briefly, initial searches identified 238 articles from MEDLINE, 393 from Web of Science, and 609 from EMBASE. Of these, 40 articles contained relevant data from 47 studies, as information from 7 centers was taken from 1 article (11) and information from 2 centers was taken from another (12). An investigator from each of the 47 studies was invited to provide raw data (or estimates from prespecified analyses). Estimates were obtained from 43 of the 47 identified studies covering 95% (9,874 of 10,390) of potential patients with type 1 diabetes. Individual patient data were obtained from 27 of these studies, 8 supplied prespecified estimates, in 8 studies data could be extracted from published reports, and 4 studies could not be included.

Characteristics of included studies

Table 1 contains the characteristics of the 43 studies from which relevant data were obtained (see Supplemental Data for full list of included articles). Of these, 40 were

case-control studies, and 3 were cohort studies. Twenty-eight studies were from Europe, and in 24 studies, cases were identified using a national or local diabetes register. Thirty-seven studies ascertained breast-feeding data using questionnaires or interviews, and in the majority, breast-feeding data were recalled many years after the birth of the child.

Overall findings for any (nonexclusive) breast-feeding

The associations between any (nonexclusive) breast-feeding and type 1 diabetes from the 43 studies (including 9,874 patients with type 1 diabetes) are shown in Fig. 1 and Table 2. Initially, an analysis was conducted investigating any recorded duration of breast-feeding (the breast-feeding duration used in this analysis for each study is shown in Fig. 1). Overall, in studies which investigated any measure of breast-feeding, there was a reduction in the risk of type 1 diabetes in breast-fed children of 18% (OR = 0.81, 95% CI 0.72–0.92; $P < 0.001$). There was, however, marked heterogeneity between studies ($I^2 = 63\%$; heterogeneity $P < 0.001$). Restricting this analysis to studies with a low risk of bias (due to high response rates and randomly selected population-based controls, as shown in Table 1), there was no evidence of an association (OR = 1.00, 95% CI 0.89–1.11; $P = 0.93$) and little evidence of heterogeneity ($I^2 = 1\%$; heterogeneity $P = 0.51$).

Analyses were also conducted in subgroups of studies recording breast-feeding of ~ 2 weeks' duration or more (see Fig. 1 for exact duration of breast-feeding used in each study) and ~ 3 months duration or more (see Table 1 for exact duration of breast-feeding used in each study). In 28 studies, there was little evidence of any difference in the risk of type 1 diabetes in children breast-fed for ~ 2 weeks or more compared with < 2 weeks (OR = 0.93, 95% CI 0.81–1.07; $P = 0.32$), but again there was heterogeneity between studies ($I^2 = 54\%$; heterogeneity $P < 0.001$). This heterogeneity was reduced in 15 studies with a low risk of bias ($I^2 = 8\%$; heterogeneity $P = 0.37$), but the overall finding was little altered (OR = 1.00, 95% CI 0.87–1.15; $P = 0.99$). In 29 studies, there was also little evidence of a reduction in the risk of type 1 diabetes in children breast-fed for ~ 3 months or more compared with children breast-fed for < 3 months (OR = 0.88, 95% CI 0.78–1.00; $P = 0.05$), but the heterogeneity between studies persisted ($I^2 = 68\%$;

heterogeneity $P < 0.001$). Repeating this analysis in 15 studies with a low risk of bias showed no evidence of an association (OR = 0.99, 95% CI 0.86–1.14; $P = 0.92$) and slightly less, though still significant, heterogeneity ($I^2 = 48\%$; heterogeneity $P = 0.02$). Funnel plots (not shown) provided little evidence of asymmetry (potentially caused by publication bias).

Finally, an analysis was conducted in the following approximate categories of (nonexclusive) breast-feeding: < 2 weeks, 2 weeks to 4 months, 4–6 months, and > 6 months. In 24 studies with available data, when compared with children breast-fed for < 2 weeks children breast-fed for 2 weeks to 4 months had a 4% reduction in diabetes risk (OR = 0.96, 95% CI 0.83–1.12), children breast-fed for 4–6 months had a 5% reduction in diabetes risk (OR = 0.95, 95% CI 0.78–1.15), and children breast-fed for > 6 months had a 6% reduction in diabetes risk (OR = 0.94, 95% CI 0.76–1.17), though none of these differences were significant. These findings were similar when restricted to 13 studies with a low risk of bias.

Additional analyses (shown in Supplementary Table 2) in subgroups of studies defined by geographic region (European, non-European) and low and high incidence rate countries (< 15 cases of type 1 diabetes per 100,000 person-years and > 15 per 100,000 person-years, respectively) did not reveal any marked differences in association.

There was little evidence of a difference in the association between childhood type 1 diabetes and (nonexclusive) breast-feeding in early diagnosed diabetes (i.e., < 5 years old) and later diagnosed diabetes (i.e., between 5 and 15 years old) in studies in which both age groups were available (shown in Supplementary Table 3). Specifically, in 22 studies, the OR for breast-feeding for ~ 2 weeks or more was 0.84 (95% CI 0.65–1.08) in early diagnosed disease and 0.95 (95% CI 0.82–1.11) for later diagnosed disease. Similarly, in 23 studies, the OR for breast-feeding for ~ 3 months or more was 0.86 (95% CI 0.69–1.08) in early diagnosed disease and 0.90 (95% CI 0.79–1.02) for later diagnosed disease.

Supplementary Table 1 shows the findings for (nonexclusive) breast-feeding for ~ 2 weeks or more after adjustment for potential confounders. The association between type 1 diabetes and breast-feeding was little altered after individual adjustment for maternal diabetes, birth weight, gestational age, maternal age, birth order,

Table 1—Characteristics of included studies published 2004–2011 investigating the association between breast-feeding and childhood-onset type 1 diabetes, ordered by publication date

First author, year (reference ^a)	Type 1 diabetes				Controls				Cutoff used in 3 months in 3 months in 3 months exclusive breast-feeding analysis ^e			
	Design	Country	Ascertainment method (year cases diagnosed)	Age at dx (years) n ^b	Response rate (%)	Source (matching criteria, where used)	n ^b	Response rate (%)		Method of data collection ^c (delay years)		
Ponsonby, 2011 (R1)	Cohort	Australia	Tasmanian diabetes register (1988–2004)	0–16 23	96	Tasmanian infant health survey	9,856	96	I (0)	3 months	ex 3 months	
Rabiei, 2011 (R2)	C-C	Iran	Iranian Diabetes Association (?)	0–15 100	100	Primary and guidance school	200	100	Q (0–15)	3 months	ex 3 months	
Borras, 2011 (R3)	C-C	Spain	Catalan register of diabetes (1987–2003)	0–10 349	88	Register of newborn screening for metabolic diseases (birth year)	1,224	100	R			
Salem, 2010 (R4)	C-C	Egypt	Clinic attendance (2005 to 2006)	0–18 457	?	Unknown	400	?	?		ex 3 months	
Robertson, 2010 (R5)	C-C	Scotland	Scottish diabetes register (1984–2005)	0–14 54	16	Aberdeen maternity records (birth year)	154	16	R			
Bener, 2009 (R6)	C-C	Qatar	Hospital outpatient's clinic (?)	0–16 170	78	Attending primary health care physician (age, sex, ethnicity)	170	75	Q (0–16)			
Memon, 2009 (R7)	C-C	Kuwait	Kuwait childhood diabetes register (1983–2003)	0–19 376	94	Attending primary care/general practice (birth year, sex, nationality, area)	376	92	Q (0–19)	3 months	ex 3 months	
Savilahti, 2009 (R8)	Cohort	Finland	National health institute treatment data (1995–2006)	0–12 31	75	Trial birth cohort used ^d	4,604	75	Q (0)	4 months	ex 4 months	
Karavanaki, 2008 (R9)	C-C	Greece	Hospital admission (1999 to 2000)	0–15 121	95	Hospital admissions excluding chronic diseases	150	100	Q (2–15)	4 months		
Benson, 2008 (R10)	C-C	Canada	Prince Edward Island diabetes register (2001–2004)	0–23 52	86	Provincial Medicare Registry (age, sex) ^d	95	73	I (1–23)	3 months		
Rosenbauer, 2008 (R11)	C-C	Germany	Nationwide hospital-based surveillance (1992–1995)	0–4 760	71	Local registration offices (age, sex, area)	1,868	43	Q (0–4)	7 weeks	ff 7 weeks	
Ievins, 2007 (R12)	Cohort	England	Hospital admission [ICD diabetes code] (1963–1999)	0–14 288	f	Oxfordshire/West Berkshire maternity records	17,5672	f	R			
Tenconi, 2007 (R13)	C-C	Italy	Pavia type 1 diabetes register (1988–2000)	0–19 96	85	Hospital (age, sex, week)	202	98	I (0–19)		ex 3 months	
Tzeng, 2007 (R14)	C-C	Taiwan	Hospital attendance (?)	7–14 54	?	Schoolmates of cases (age, sex)	194	?	Q (2–25)			
Ygreda, 2006 (R15)	C-C	Peru	Hospital attendance (?)	0–18 84	?	Hospital	82	?	?			

Continued on p. 2219

Table 1—Continued

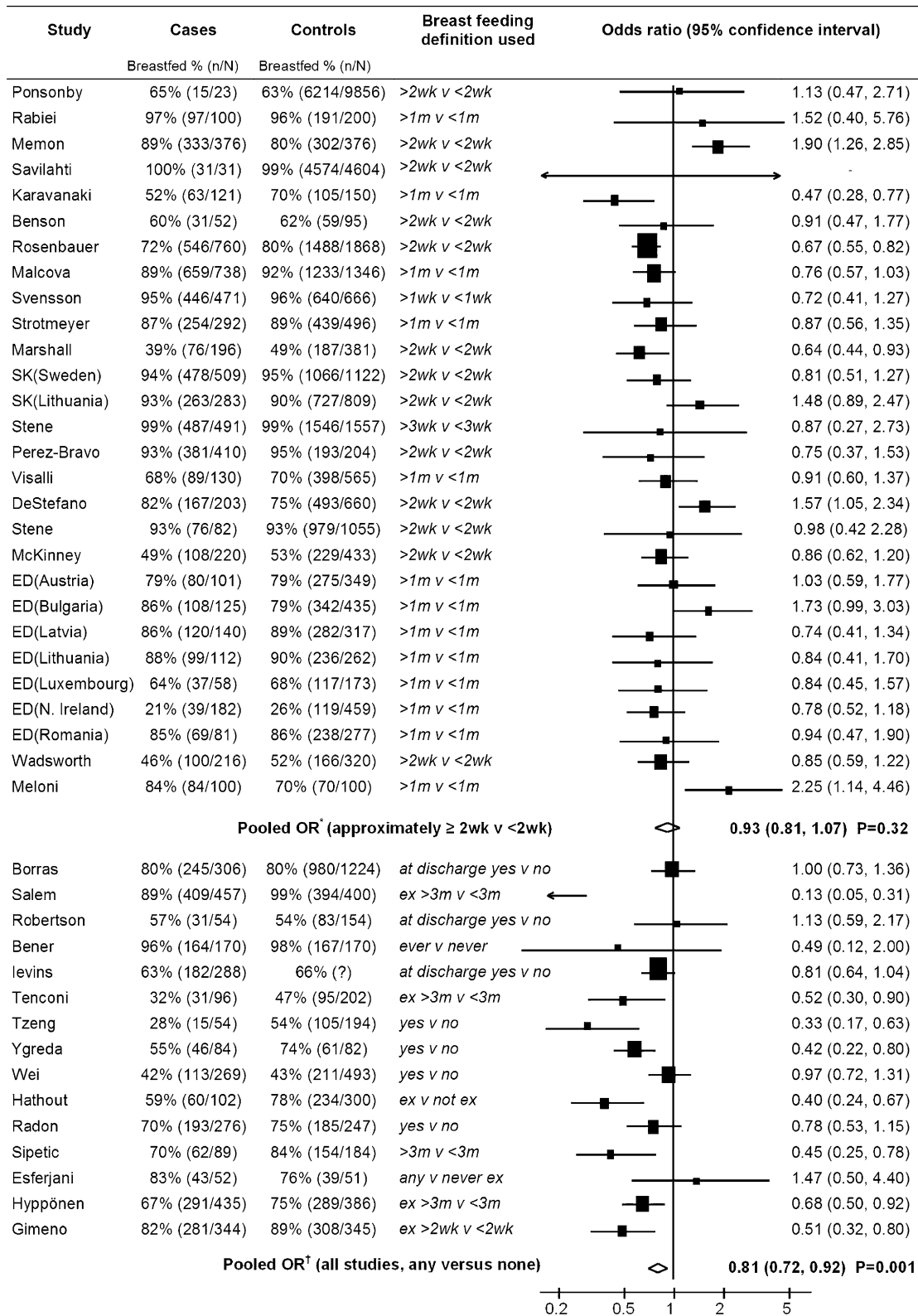
First author, year (reference ^a)	Type 1 diabetes			Controls			Cutoff used in 3 months in 3 months	Cutoff used in 3 months in 3 months exclusive breastfeeding analysis ^e			
	Design	Country	Ascertainment method (year cases diagnosed)	Age at dx (years)	n ^b	Response rate (%)			Source (matching criteria, where used)	n ^b	Response rate (%)
Wei, 2006 (R16)	C-C	Taiwan	School-based urine screening program and questionnaire (1992–1997)	0–18	269	87	Randomly selected negatives from screening program ^d	493	88	I (6–18)	ex 2 months
Hathout, 2006 (R17)	C-C	United States	Attending hospital (?)	0–22	102	?	Hospital well-child clinic	300	?	I (0–22)	
Malcova, 2006 (R18)	C-C	Czech Republic	Czech childhood diabetes register (1996–2000)	0–14	738	76	Schoolmates of cases (age)	1,346	73	Q (0–18)	3 months ex 3 months
Radon, 2005 (R19)	C-C	Germany	Pediatric referral center admission (?)	1–14	276	91	Surgery patients (hospital)	247	91	Q (6–16)	ff 4 months
Svensson, 2005 (R20)	C-C	Denmark	Danish register of childhood diabetes (1996–1999)	0–14	666	81	Danish population register (age, sex)	471	48	Q (0–18)	4 months ff 4 months
Sipetic, 2005 (R21)	C-C	Serbia	Belgrade Hospital admission (1994–1997)	0–16	105	89	Hospital outpatients with skin disease (age, sex, area)	210	100	Q (0–16)	3 months ex 3 months
Strotmeyer, 2004 (R22)	C-C	China	14 regional type 1 diabetes incidence registers (1985–1998)	0–15	292	90	Friends of cases (area)	496	?	Q (0–15)	4 months
Marshall, 2004 (R23)	C-C	England	Morecombe Bay/East Lancashire diabetes clinics (1998)	0–15	196	83	Health Authorities (sex, birth date)	381	53	Q (0–15)	4 months ex 4 months
Sadauskaite-Kuehne, 2004 (R24)	C-C	Sweden	Southeast Sweden type 1 diabetes register (1995–2000)	0–15	509	100	Population register ^d	1,122	94	Q (0–15)	3 months ex 3 months
Stene, 2003 (R25)	C-C	Lithuania	Lithuanian type 1 diabetes register (1996–2000)	0–15	283	100	Outpatient clinic ^d	809	73	Q (0–15)	3 months ex 3 months
Perez-Bravo, 2003 (R26)	C-C	Norway	Norwegian Childhood Diabetes Registry (1997–2000)	0–14	491	73	Norwegian population registry	1,557	56	Q (0–14)	3 months ex 3 months
Visalli, 2003 (R27)	C-C	Chile	Childhood diabetes register (1999–2001)	0–14	410	?	Schools (socioeconomic conditions)	204	?	Q (0–14)	3 months
DeStefano, 2001 (R28)	C-C	Italy	Lazio type 1 diabetes register (1989–1995)	0–14	130	100	Schools (age) ^d	703	91	Q (0–14)	3 months
Esferjani, 2001 (R29)	C-C	United States	Health maintenance organization [ICD code] (1988–1997)	0–10	203	100	Health maintenance organization (sex, date of birth) ^d	660	100	R	4 months
	C-C	Iran	Hospital attendance (?)	0–14	54	?	Hospital outpatient (age, sex, location, social class)	51	?	Q (0–14)	ff 3 weeks

Continued on p. 2220

Table 1—Continued

First author, year (reference ^a)	Type 1 diabetes			Controls			Cutoff used in 3 months breast-feeding analysis	Cutoff used in 3 months exclusive breastfeeding analysis ^e				
	Design	Country	Ascertainment method (year cases diagnosed)	Age at dx (years)	n ^b	Response rate (%)			Source (matching criteria, where used)	n ^b	Response rate (%)	Method of data collection ^c (delay years)
Stene, 2000 (R30)	C-C	Norway	Norwegian Childhood Diabetes Registry (1989–1998)	0–14	82	94	Norwegian population registry ^d	1,055	73	Q (1–17)	3 months	ex 3 months
Hyppönen, 2000 (R31)	C-C	Finland	National diabetes register (1986–1989)	0–14	435	94	Finnish Population Registry (birth date, sex) ^d	386	85	Q (0–14)	3 months	ff 3 months
McKinney, 1999 (R32)	C-C	England	Yorkshire Childhood Diabetes Register (1993 to 1994)	0–15	220	92	General practice (age, sex) ^d	433	82	Q (0–15)	3 months	ex 3 months
EURODIAB, 1999 (R33)	C-C	Austria	Vienna type 1 diabetes register (1989–1994)	0–14	101	89	Schools (age, sex) ^d	349	80	Q (0–14)	3 months	ex 3 months
	C-C	Lithuania	W. Bulgaria type 1 diabetes register (1991–1994)	0–14	125	73	Schools and policlinics (age) ^d	435	79	Q (0–14)	3 months	ex 3 months
	C-C	Latvia	Latvian type 1 diabetes register (1989–1994)	0–14	140	99	Population register (age) ^d	317	79	Q (0–14)	3 months	ex 3 months
	C-C	Luxembourg	Lithuanian type 1 diabetes register (1989–1994)	0–14	112	94	Policlinics (age) ^d	262	73	Q (0–14)	3 months	ex 3 months
	C-C	Northern Ireland	Luxembourg type 1 diabetes register (1989–1995)	0–14	58	100	Preschools and schools (age) ^d	173	95	Q (0–14)	3 months	ex 3 months
	C-C	Romania	Northern Ireland type 1 diabetes register (1990–1992)	0–14	182	79	General practice	459	64	Q (0–14)	3 months	ex 3 months
Gimeno, 1997 (R34)	C-C	Brazil	Bucharest type 1 diabetes register (1989–1994)	0–14	81	74	Preschools and schools (age) ^d	277	81	Q (0–14)	3 months	ex 3 months
Wadsworth, 1997 (R35)	C-C	United Kingdom	Diabetes association/hospital admission (1995)	0–19	344	91	Unclear (neighborhood, sex, age)	345	100	I (0–19)	4 months	ex 4 months
Meloni, 1997 (R36)	C-C	Sardinia	British Pediatric Association Surveillance Unit (1992)	0–5	216	89	Health Authority Immunization Register (age, sex) ^d	320	70	Q (0–5)	4 months	ex 4 months
	C-C	Sardinia	Hospital attendance (?)	0–15	100	?	Hospital (age, sex)	100	?	Q (0–15)	3 months	ff 3 months

C-C, case-control; dx, diagnosis; ex, exclusive breast-feeding; ff, formula-fed; I, interview questionnaire; Q, postal questionnaire; R, medical or maternity records; Resp, response. ^aSupplemental Data contains a corresponding reference list for included studies. ^bNumber included in analysis of breast-feeding. ^cMethod of breast-feeding data collection (range of delay from birth to breast feeding data collection). ^dLow risk of bias study. ^eApproximate cutoffs for other analyses used in each study shown in Figs. 1 and 2. ^fNot applicable.



ED, Eurodiab; ex, exclusively breast fed; m, month; N, Northern; SK, Sadauskaite-Kuehne; wk, week; v, versus.

* Heterogeneity ($\chi^2=58.32$, $df=27$, $P<0.001$)

† Heterogeneity ($\chi^2=112.16$, $df=42$, $P<0.001$)

Figure 1—Pooled analysis of association between (nonexclusive) breast-feeding and childhood-onset type 1 diabetes in studies investigating ~2 weeks (nonexclusive) breast-feeding and studies investigating any measure of breast-feeding.

Table 2—Pooled analyses of the association between breast-feeding and childhood-onset type 1 diabetes in all studies and in studies with a lower risk of bias

	All studies						Studies with low risk of bias ^d					
	N ^b	Cases	OR (95% CI)	P value	Heterogeneity χ ² (P value)	I ² in % (95% CI)	N ^b	Cases	OR (95% CI)	P value	Heterogeneity χ ² (P value)	I ² in % (95% CI)
Nonexclusive breast-feeding^a												
Any vs. none ^c	43	9,874	0.81 (0.72–0.92)	0.001	112.16 (<0.001)	63 (48–73)	16	2,918	1.00 (0.89–1.11)	0.93	15.20 (0.51)	1 (0–53)
≥2 vs. <2 wks ^e	28	6,798	0.93 (0.81–1.07)	0.32	58.32 (<0.001)	54 (29–70)	15	2,343	1.00 (0.87–1.15)	0.99	15.16 (0.37)	8 (0–44)
≥3 vs. <3 mos ^e	29	6,683	0.88 (0.78–1.00)	0.05	87.10 (<0.001)	68 (53–78)	15	2,334	0.99 (0.86–1.14)	0.92	27.00 (0.02)	48 (6–71)
<2 wks ^e	24	6,185	1.00 (ref. cat.)				13	2,045	1.00 (ref. cat.)			
2 wks–4 mos			0.96 (0.83–1.12)	0.60	38.11 (0.03)	40 (2–63)			1.03 (0.86–1.22)	0.77	13.06 (0.37)	8 (0–46)
4–6 mos			0.95 (0.78–1.15)	0.59	43.55 (0.006)	47 (15–67)			1.09 (0.90–1.32)	0.38	7.02 (0.86)	0 (0–57)
>6 mos			0.94 (0.76–1.17)	0.57	69.28 (<0.001)	67 (49–78)			1.09 (0.83–1.44)	0.52	26.75 (0.01)	55 (16–76)
Exclusive breast-feeding^a												
Any vs. none ^c	33	7,621	0.74 (0.64–0.84)	<0.001	96.22 (<0.001)	67 (52–77)	13	2,187	0.89 (0.78–1.02)	0.09	12.84 (0.38)	6 (0–59)
≥2 vs. <2 wks ^f	20	4,388	0.75 (0.64–0.88)	0.001	45.10 (0.001)	58 (30–74)	12	1,918	0.86 (0.75–0.99)	0.04	11.07 (0.44)	0 (0–58)
≥3 vs. <3 mos ^f	30	7,312	0.87 (0.75–1.00)	0.06	122.64 (<0.001)	76 (66–83)	13	2,190	1.13 (0.96–1.33)	0.15	23.00 (0.03)	43 (0–70)

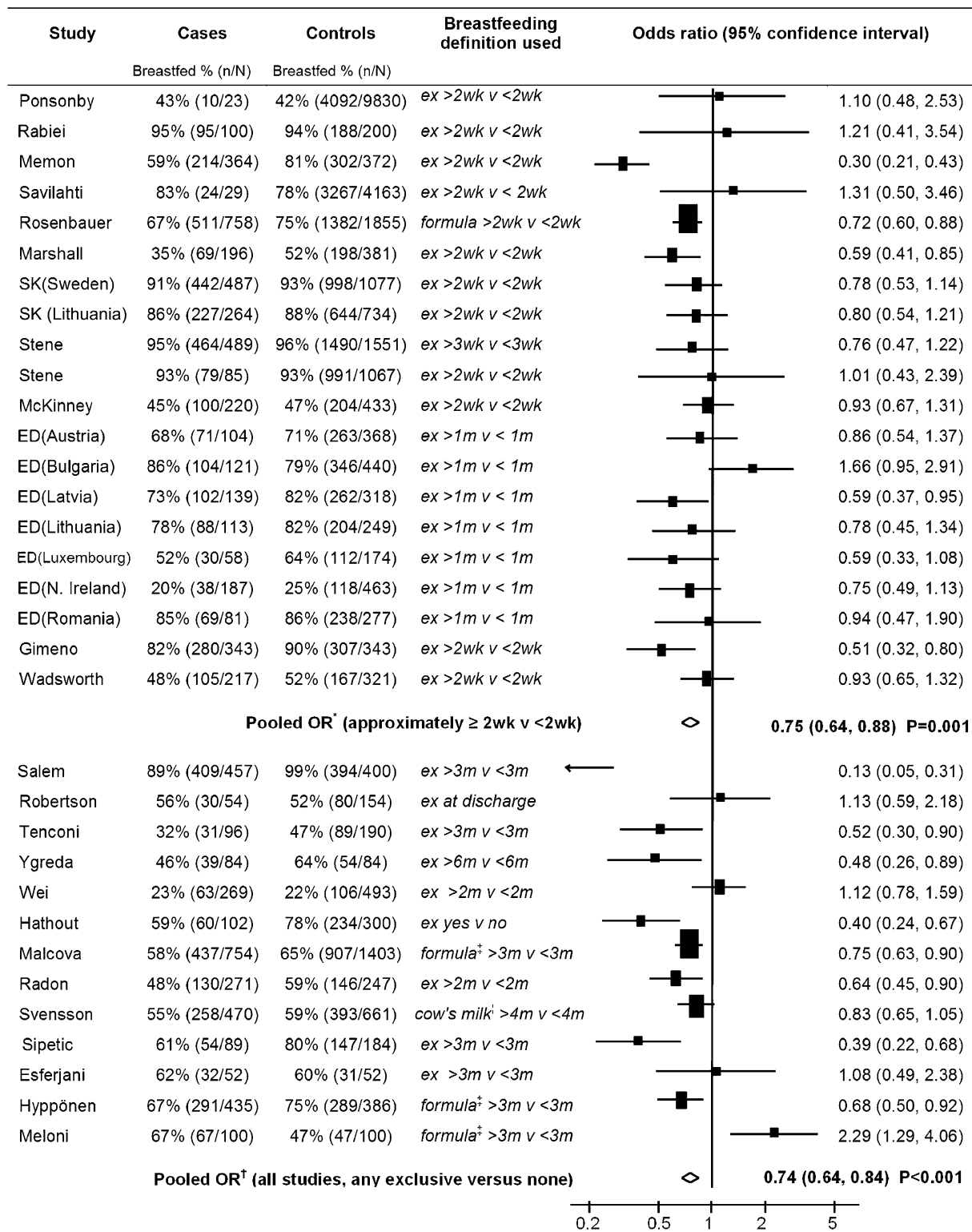
ref. cat., reference category; wks, weeks; mos, months. ^aFor approximate categories used in each study, see Fig. 1 (for any nonexclusive breast-feeding and nonexclusive breast-feeding for 2 weeks) and Fig. 2 (for any exclusive breast-feeding and exclusive breast-feeding for 2 weeks) and Tables 1 and 2 (for any nonexclusive for 3 months or exclusive breast-feeding for 3 months). ^bNumber of studies. ^cAny measure of breast-feeding or exclusive breast-feeding versus none. ^dStudies with low risk of bias indicated by footnote in Table 1. ^eLess than 2 week category and <3 month category includes no breast-feeding. ^fLess than 2 week category and <3 month category includes no exclusive breast-feeding.

Caesarean section delivery, or socio-economic status, where possible. There was also little change in the estimate when adjustment for all available variables simultaneously was conducted.

Overall findings for exclusive breast-feeding

Similar analyses were conducted for the associations between exclusive breast-feeding and type 1 diabetes (investigated by 33 studies including 7,621 patients with type 1 diabetes) that are shown in Fig. 2 (which contains the duration of exclusive breast-feeding used in each study) and Table 1. Overall, in studies which investigated any measure of exclusive breast-feeding, there was a reduction in the risk of type 1 diabetes in exclusively breast-fed children of 26% (OR = 0.74, 95% CI 0.64–0.84; $P < 0.001$), but there was marked heterogeneity between studies ($I^2 = 67%$; heterogeneity $P < 0.001$). When restricting this analysis to 13 studies with a low risk of bias, the association was no longer significant (OR = 0.89, 95% CI 0.78–1.02; $P = 0.09$), and there was less heterogeneity ($I^2 = 6%$; heterogeneity $P = 0.38$).

As before, analysis was conducted in subgroups of studies recording ~2 weeks or more (see Fig. 1 for definition) and ~3 months or more of exclusive breast-feeding (see Table 1 for definition). In 20 studies, children exclusively breast-fed for ~2 weeks or more had a 25% reduction in their risk of type 1 diabetes (OR = 0.75, 95% CI 0.64–0.88; $P = 0.001$) compared with children exclusively breast-fed for <2 weeks, but there was marked heterogeneity between studies ($I^2 = 58%$; heterogeneity $P < 0.001$). This association was slightly attenuated but remained significant in 12 studies with a low risk of bias (OR = 0.86, 95% CI 0.75–0.99; $P = 0.04$), but in these studies, there was less heterogeneity ($I^2 = 0%$; heterogeneity $P = 0.44$). There was less evidence of a reduction in diabetes risk (in 30 studies) in children exclusively breast-fed for ~3 months or more (OR = 0.87, 95% CI 0.75–1.00; $P = 0.06$) compared with children exclusively breast-fed for <3 months but there was marked heterogeneity ($I^2 = 76%$; heterogeneity $P < 0.001$). In 13 studies with a low risk of bias, the heterogeneity remained ($I^2 = 43%$; heterogeneity $P = 0.03$), and there was little evidence of an association (OR = 1.13, 95% CI 0.96–1.33; $P = 0.15$). Insufficient data were available to conduct an analysis of exclusive breast-feeding in finer duration categories. Funnel plots for these associations (not shown) provided



ED, Eurodiab; ex, exclusively breast fed; m, month; N, Northern; SK, Sadauskaite-Kuehne; wk, week; v, versus.

[‡] Heterogeneity ($\chi^2=45.10$, $df=19$, $P=0.001$)

[†] Heterogeneity ($\chi^2=96.22$, $df=32$, $P<0.001$)

[‡] Formula introduced after child 3 months old versus formula introduced under 3 months old.

[†] Cow's milk products introduced after child 4 months old versus under 4 months old.

Figure 2—Pooled analysis of association between exclusive breast-feeding and childhood-onset type 1 diabetes in studies investigating ~2 weeks exclusive breast-feeding and studies investigating any measure of exclusive breast-feeding.

little evidence of asymmetry (potentially caused by publication bias).

Additional analyses (shown in Supplementary Table 2) in subgroups of studies defined by geographic region (European, non-European) and incidence rates of type 1 diabetes (low incidence, high incidence) did not reveal any marked differences in association.

As before, a comparison of the associations with exclusive breast-feeding by early diagnosed diabetes (i.e., <5 years old) and later diagnosed diabetes (i.e., between 5 and 15 years old) showed little evidence of a difference in studies in which both age groups were available (shown in Supplementary Table 3). Specifically, in 18 studies, the OR for exclusive breast-feeding for ~2 weeks or more was 0.73 (95% CI 0.58–0.91) in early diagnosed disease and 0.75 (95% CI 0.60–0.95) for later diagnosed disease. Similarly, in 24 studies, the OR for exclusive breast-feeding for ~3 months or more was 0.86 (95% CI 0.71–1.03) in early diagnosed disease and 0.90 (95% CI 0.76–1.05) for later diagnosed disease.

Supplementary Table 1 shows the findings for exclusive breast-feeding for ~2 weeks or more after adjustment for potential confounders. The association between type 1 diabetes and exclusive breast-feeding was little altered after adjustment for any of these confounders individually, where possible, or when adjustments were conducted for all available confounders simultaneously.

CONCLUSIONS—This pooled analysis suggests that breast-feeding exclusively in the early weeks of life could reduce the risk of childhood onset type 1 diabetes by 15%, based upon the highest quality studies. This pooled analysis provides little evidence that longer exclusive or nonexclusive breast-feeding has a protective effect. However, firm conclusions are difficult to reach because of the marked heterogeneity in the observed associations between studies and the weaknesses inherent in many of the included studies. The observed association between exclusive breast-feeding and type 1 diabetes could not be explained by confounding from established risk factors for diabetes including maternal diabetes, birth weight, gestational age, maternal age, birth order, or Caesarean section delivery.

This is, to our knowledge, the first pooled analysis of individual participant data on breast-feeding and diabetes. The main strengths of using individual participant data in this study was that it allowed

analysis to be conducted in similar categories of breast-feeding duration between studies and enabled adjustment of associations for various confounders. This analysis contains data from 43 studies and includes 9,874 patients with type 1 diabetes allowing the power to identify associations of relatively small magnitude. Also, the analyses benefited from coverage of 95% of eligible cases from studies identified by the comprehensive search strategies. However, it remains possible that studies with relevant data were not identified by the searches. A weakness of this pooled analysis was that the majority of studies were questionnaire-based case-control studies, and their findings are based upon breast-feeding information usually recalled over many years, potentially resulting in recall and other biases. There were only two cohort studies (8,9) that prospectively recorded breast-feeding at 2 weeks and 3 months, but these contained relatively few patients with type 1 diabetes, 31 and 24 cases, respectively. Consequently, there is a need for further studies prospectively or routinely recording breast-feeding in early life. Although attempts were made to identify studies with lower risk of bias (with higher response rates and randomly selected population-based controls), even in these studies, response rates varied, and in many, recall bias is possible. As with all observational studies, it is impossible to rule out the effect of unmeasured confounding, for example, by other infant food intake.

The association between breast-feeding and type 1 diabetes differed markedly between studies. This could reflect real differences in the association in different populations or biases specific to each study. In studies with a low risk of bias, less heterogeneity was observed, allowing more confidence to be placed on the resulting pooled estimates.

The findings of our pooled analysis of individual participant data differ from two published literature-based meta-analyses (3,4). The first meta-analysis (3) (containing studies conducted prior to 1994) demonstrated a reduction in diabetes risk of 30% with breast-feeding >3 months, and a 35% reduction with exclusive breast-feeding for >3 months. The second meta-analysis (containing studies conducted prior to 1996, many of which were in the first meta-analysis) demonstrated a reduction in diabetes risk of 20% with breast-feeding for 3 months and 40% for exclusive breast-feeding for

>3 months (4). In our pooled analysis, there was little evidence of any reduction in the risk of diabetes after 3 months of breast-feeding (exclusive or nonexclusive). Unfortunately, neither of the two earlier meta-analyses presented estimates for breast-feeding in the first 2 weeks of life to allow comparison with our results. Both these meta-analyses were largely based upon questionnaire-based case-control studies, and the second meta-analysis (4) highlighted that the observed association could reflect methodological weaknesses, particularly recall bias. The authors suggested that mothers of children with diabetes may more critically remember occasions when they deviated from the breast-feeding recommendations of health care personnel (4). As previously discussed, the majority of studies included in this pooled analysis were questionnaire-based case-control studies and would also be subject to this bias.

In 2007, the Agency for Healthcare Research and Quality reviewed the evidence of the effect of breast-feeding on type 1 diabetes (13). However, the report did not contain a meta-analysis because their searches identified only 6 studies after 1996 (up to 2007) when the previous meta-analyses were conducted, in contrast to the 43 studies included in our pooled analysis between 1996 and 2011. The estimated OR of 0.75 for any breast-feeding for 3 months from the Agency for Healthcare Research and Quality report (13) (based solely on the two previous meta-analyses) has since been used to estimate the cost-effectiveness of breast-feeding in the U.S. (14). Our results would suggest that this OR of 0.75 may overestimate any protective effect against type 1 diabetes and that consequently the cost-effectiveness of breast-feeding with respect to type 1 diabetes could also be exaggerated. A recent narrative review (15) commenting on the effects of breast-feeding and complementary feeding noted that the associations were controversial and that contradictory outcomes had been observed. Studies have also been conducted into β -cell autoimmunity and breast-feeding, but the results have been mixed, with some studies observing protective effects of breast-feeding, whereas others have observed no association [see Knip et al. (15) for references].

This pooled analysis suggests that initial exclusive breast-feeding may reduce diabetes risk, indicating that the introduction of formula feeding may explain any association. The responsible

mechanism is unclear, but researchers have speculated (15) that breast-feeding could protect against type 1 diabetes risk by increasing gut permeability; previous studies have shown that gut permeability decreases faster in breastfed children (16) or by reducing the risk of enterovirus infections (17), which have been associated with increased diabetes risk (18). Alternatively, any increased risk of diabetes associated with formula feeding could reflect early exposure to a variety of cow's milk proteins [studies have shown children with type 1 diabetes have increased concentrations of antibodies to dietary antigens (19)], modification of the gut microflora (15), and increased weight gain in early life [although one study suggested that any effect of breast-feeding was independent of weight gain (20)]. In our analysis, an association was only observed for initial exclusive breast-feeding (for ≥ 2 weeks) but not for exclusive breast-feeding for ≥ 3 months. This distinction may be real or could reflect the relatively accurate maternal recall of initial breast-feeding but less accurate recall of the duration of feeding, as previously suggested (3). If early introduction of formula feeding is responsible then ongoing efforts to investigate alternative formula, such as the Trial to Reduce Insulin-dependent Diabetes Mellitus in the Genetically at Risk (21), may be productive.

In conclusion, our pooled analysis suggests that children who are initially exclusively breast-fed have a small reduction in their risk of type 1 diabetes. This finding is difficult to interpret because the associations varied markedly between studies and because the results are based primarily upon questionnaire-based case-control studies, which could have been affected by recall and other biases.

Acknowledgments—This work was supported by National Institutes of Health grants R01-DK-46498 and R01-DK-42316, the Chinese Foundation of Health, a grant (DOH91-TD1167) from the Department of Health, Executive Yuan, Republic of China, the Ministry for Science and Technology of the Republic of Serbia through Contract 175042 (2011–2014), a grant from the German Research Foundation (HE 234/1-1), and the Research Council of Norway (148359/330).

No potential conflicts of interest relevant to this article were reported.

C.R.C., L.C.S., J.L., J.R., O.C., J.S., F.P.-B., A.M., S.G.G., E.J.K.W., E.S.S., M.J.G., K.R., L.-M.C., R.C.P., A.C., K.K., G.B., P.P., B.U.,

E.S., G.D., S.S., G.J., C.I.-T., C.E.d.B., K.H., V.B., E.S., A.-L.P., M.S., S.R., and C.C.P. researched data. C.R.C., L.C.S., J.R., K.R., A.C., S.S., E.S., and M.S. were responsible for statistical analysis. C.R.C. wrote the manuscript. C.R.C., L.C.S., J.L., J.R., O.C., J.S., F.P.-B., A.M., S.G.G., E.J.K.W., E.S.S., M.J.G., K.R., L.-M.C., R.C.P., A.C., K.K., G.B., P.P., B.U., E.S., G.D., S.S., G.J., C.I.-T., C.E.d.B., K.H., V.B., E.S., A.-L.P., M.S., S.R., and C.C.P. reviewed and edited the manuscript. C.R.C. is the guarantor of this work and, as such, had full access to all the data in the study and takes responsibility for the integrity of the data and the accuracy of the data analysis.

The authors thank A. Pezic (Murdoch Children's Research Institute, Parkville, Victoria, Australia), R. Portuesi (Department of Endocrinology and Diabetes, University Campus Bio-Medico, Rome, Italy), E. Weintraub (Centers for Disease Control and Prevention, Atlanta, GA), R. Rastmanesh (Clinical Nutrition and Dietetics Department, Shahid Beheshti University of Medical Sciences, Tehran, Iran), J. Dorman (Department of Epidemiology, Graduate School of Public Health, University of Pittsburgh, Pittsburgh, PA), and M. Yang (Department of Epidemiology, Graduate School of Public Health, University of Pittsburgh, Pittsburgh, PA) for support. The authors also thank G. Soltész (University of Pecs, Pecs, Hungary) and G. Dahlquist (Umea University, Umea, Sweden), coordinators of the EURODIAB Substudy.

References

- Patterson CC, Dahlquist GG, Gyürüs E, Green A, Soltész G; EURODIAB Study Group. Incidence trends for childhood type 1 diabetes in Europe during 1989–2003 and predicted new cases 2005–20: a multicentre prospective registration study. *Lancet* 2009;373:2027–2033
- Hirschhorn JN. Genetic epidemiology of type 1 diabetes. *Pediatr Diabetes* 2003;4:87–100
- Gerstein HC. Cow's milk exposure and type 1 diabetes mellitus. A critical overview of the clinical literature. *Diabetes Care* 1994;17:13–19
- Norris JM, Scott FW. A meta-analysis of infant diet and insulin-dependent diabetes mellitus: do biases play a role? *Epidemiology* 1996;7:87–92
- Stewart LA, Tierney JF. To IPD or not to IPD? Advantages and disadvantages of systematic reviews using individual patient data. *Eval Health Prof* 2002;25:76–97
- Owen CG, Whincup PH, Kaye SJ, et al. Does initial breastfeeding lead to lower blood cholesterol in adult life? A quantitative review of the evidence. *Am J Clin Nutr* 2008;88:305–314
- Stukel TA, Demidenko E, Dykes J, Karagas MR. Two-stage methods for the analysis of pooled data. *Stat Med* 2001;20:2115–2130
- Savilahti E, Saarinen KM. Early infant feeding and type 1 diabetes. *Eur J Nutr* 2009;48:243–249
- Ponsonby AL, Pezic A, Cochrane J, et al. Infant anthropometry, early life infection, and subsequent risk of type 1 diabetes mellitus: a prospective birth cohort study. *Pediatr Diabetes* 2011;12:313–321
- DIAMOND Project Group. Incidence and trends of childhood Type 1 diabetes worldwide 1990–1999. *Diabet Med* 2006;23:857–866
- Dahlquist GG, Patterson C, Soltesz G. Perinatal risk factors for childhood type 1 diabetes in Europe. The EURODIAB Substudy 2 Study Group. *Diabetes Care* 1999;22:1698–1702
- Sadauskaitė-Kuehne V, Ludvigsson J, Padaiga Z, Jasinskiene E, Samuelsson U. Longer breastfeeding is an independent protective factor against development of type 1 diabetes mellitus in childhood. *Diabetes Metab Res Rev* 2004;20:150–157
- Ip S, Chung M, Raman G, et al. *Breast-feeding and Maternal and Infant Health Outcomes in Developed Countries. Evidence Report/Technology Assessment No. 153*. Rockville, MD, Agency for Healthcare Research and Quality, 2007
- Bartick M, Reinhold A. The burden of suboptimal breastfeeding in the United States: a pediatric cost analysis. *Pediatrics* 2010;125:e1048–e1056
- Knip M, Virtanen SM, Akerblom HK. Infant feeding and the risk of type 1 diabetes. *Am J Clin Nutr* 2010;91:1506S–1513S
- Catassi C, Bonucci A, Coppa GV, Carlucci A, Giorgi PL. Intestinal permeability changes during the first month: effect of natural versus artificial feeding. *J Pediatr Gastroenterol Nutr* 1995;21:383–386
- Sadeharju K, Knip M, Virtanen SM, et al.; Finnish TRIGR Study Group. Maternal antibodies in breast milk protect the child from enterovirus infections. *Pediatrics* 2007;119:941–946
- Yeung WC, Rawlinson WD, Craig ME. Enterovirus infection and type 1 diabetes mellitus: systematic review and meta-analysis of observational molecular studies. *BMJ* 2011;342:d35
- Savilahti E, Akerblom HK, Tainio VM, Koskimies S. Children with newly diagnosed insulin dependent diabetes mellitus have increased levels of cow's milk antibodies. *Diabetes Res* 1988;7:137–140
- Hyppönen E, Kenward MG, Virtanen SM, et al. Infant feeding, early weight gain, and risk of type 1 diabetes. Childhood Diabetes in Finland (DiMe) Study Group. *Diabetes Care* 1999;22:1961–1965
- Knip M, Virtanen SM, Becker D, Dupré J, Krischer JP, Åkerblom HK; TRIGR Study Group. Early feeding and risk of type 1 diabetes: experiences from the Trial to Reduce Insulin-dependent diabetes mellitus in the Genetically at Risk (TRIGR). *Am J Clin Nutr* 2011;94(Suppl.):1814S–1820S