

Minerva Access is the Institutional Repository of The University of Melbourne

Author/s:

Gao, B;Russell, A;Beesley, J;Chen, XQ;Healey, S;Henderson, M;Wong, M;Emmanuel, C;Galletta, L;Johnatty, SE;Bowtell, D;Haber, M;Norris, M;Harnett, P;Chenevix-Trench, G;Balleine, RL;Defazio, A;Gertig, D;Green, A;Webb, P;Hung, J;Moore, S;Traficante, N;Fereday, S;Harrap, K;Sadkowsky, T;Pandeya, N;Stuart-Harris, R;Kirsten, F;Rutovitz, J;Clingan, P;Glasgow, A;Proietto, A;Braye, S;Otton, G;Shannon, J;Bonaventura, T;Stewart, J;Begbie, S;Friedlander, M;Bell, D;Baron-Hay, S;Ferrier, A;Gard, G;Nevell, D;Pavlakis, N;Valmadre, S;Young, B;Camaris, C;Crouch, R;Edwards, L;Hacker, N;Marsden, D;Robertson, G;Beale, P;Beith, J;Carter, J;Dalrymple, C;Hamilton, A;Houghton, R;Russell, P;Links, M;Grygiel, J;Hill, J;Brand, A;Byth, K;Jaworski, R;Sharma, R;Achen, A;Wain, G;Ward, B;Papadimos, D;Crandon, A;Cummings, M;Horwood, K;Obermair, A;Perrin, L;Wyld, D;Nicklin, J;Davy, M;Oehler, MK;Hall, C;Dodd, T;Healy, T;Pittman, K;Henderson, D;Miller, J;Pierdes, J;Blomfield, P;Challis, D;McIntosh, R;Parker, A;Brown, B;Rome, R;Allen, D;Grant, P;Hyde, S;Laurie, R;Robbie, M;Healy, D

Title:

Paclitaxel sensitivity in relation to ABCB1 expression, efflux and single nucleotide polymorphisms in ovarian cancer

Date:

2014-05-09

Citation:

Gao, B., Russell, A., Beesley, J., Chen, X. Q., Healey, S., Henderson, M., Wong, M., Emmanuel, C., Galletta, L., Johnatty, S. E., Bowtell, D., Haber, M., Norris, M., Harnett, P., Chenevix-Trench, G., Balleine, R. L., Defazio, A., Gertig, D., Green, A., ... Healy, D. (2014). Paclitaxel sensitivity in relation to ABCB1 expression, efflux and single nucleotide polymorphisms in ovarian cancer. *Scientific Reports*, 4 (1), <https://doi.org/10.1038/srep04669>.

Persistent Link:

<https://hdl.handle.net/11343/41246>

License:

[CC BY-NC-ND](#)



OPEN

SUBJECT AREAS:
OVARIAN CANCER
TRANSLATIONAL RESEARCH

Received
21 August 2013

Accepted
24 March 2014

Published
9 May 2014

Correspondence and
requests for materials
should be addressed to
A.D. (anna.defazio@
sydney.edu.au)

* A full list of authors for
the Australian Ovarian
Cancer Study Group
and their affiliations
appears at the end of
the paper.

† These authors
contributed equally to
this work.

Paclitaxel sensitivity in relation to *ABCB1* expression, efflux and single nucleotide polymorphisms in ovarian cancer

Bo Gao^{1,2}, Amanda Russell³, Jonathan Beesley⁴, Xiao Qing Chen⁴, Sue Healey⁴, Michelle Henderson³, Mark Wong⁵, Catherine Emmanuel^{1,2}, Laura Galletta⁶, Sharon E. Johnatty⁴, David Bowtell^{6,7,8,9}, Australian Ovarian Cancer Study Group*, Michelle Haber³, Murray Norris³, Paul Harnett^{2,5}, Georgia Chenevix-Trench⁴, Rosemary L. Balleine^{2,5,10†} & Anna deFazio^{1,2,5†}

¹Department of Gynaecological Oncology, Westmead Hospital, ²Westmead Institute for Cancer Research, University of Sydney at Westmead Millennium Institute, Sydney, Australia, ³Children's Cancer Institute Australia, Sydney, Australia, ⁴QIMR Berghofer Medical Research Institute, Brisbane, Australia, ⁵Crown Princess Mary Cancer Centre, Westmead Hospital, Westmead, Australia, ⁶Peter MacCallum Cancer Centre, East Melbourne, Australia, ⁷Sir Peter MacCallum Department of Oncology, ⁸Department of Pathology, University of Melbourne, Melbourne, Australia, ⁹Department of Biochemistry and Molecular Biology, University of Melbourne, Melbourne, Australia, ¹⁰Pathology West ICPMR Westmead, Sydney, Australia.

***ABCB1* (adenosine triphosphate-binding cassette transporter B1) mediates cellular elimination of many chemotherapeutic agents including paclitaxel, which is commonly used to treat ovarian cancer. A significant association between common single nucleotide polymorphisms (SNPs) in *ABCB1* and progression-free survival has been reported in patients with ovarian cancer. Variable paclitaxel clearance due to genotype specific differences in *ABCB1* activity in cancer cells and/or normal tissues may underlie the association. Using cell-based models, we evaluated the correlations between *ABCB1* expression, polymorphisms, transporter activity and paclitaxel sensitivity in ovarian cancer (n = 10) and lymphoblastoid (n = 19) cell lines. Close associations between *ABCB1* expression, transporter function and paclitaxel sensitivity were found in lymphoblastoid cell lines, although we could not demonstrate an association with common SNPs. In ovarian cancer cell lines, *ABCB1* expression was low and the association between expression and function was lost. These results suggest that *ABCB1* related survival difference in ovarian cancer patients is more likely to be due to differential whole body paclitaxel clearance mediated by normal cells rather than a direct effect on cancer cells.**

Ovarian cancer is the seventh leading cause of cancer mortality among women globally. Most patients are treated with paclitaxel and carboplatin chemotherapy after surgery¹. However, chemotherapy response varies widely between individuals. While a number of factors including tumor histology, somatic mutations, environmental and drug-drug interactions, can contribute to the inter-individual variability, inherited genetic variations are increasingly understood to influence drug disposition and activity.

Polymorphisms in genes encoding drug transporter proteins are among the most clinically important genotypic variations that may impact on therapeutic agents². The adenosine triphosphate (ATP)-binding cassette (ABC) transporter, *ABCB1*, also known as permeability-glycoprotein (P-gp) or multidrug resistance protein 1 (MDR1), is expressed in normal barrier tissues such as the apical membrane of intestine, the canalicular site of hepatocytes, tubular cells of the kidney, lymphocytes, and also various human cancers³. It mediates the rapid exit of a vast spectrum of therapeutic agents from cells including the chemotherapeutic drug paclitaxel⁴. A number of studies have explored the potential of using *ABCB1* polymorphisms as a predictive and/or prognostic marker in ovarian cancer, but no compelling or consistent results have been identified⁵⁻⁷. Several factors including patient numbers, study design and analytical methods may cause this discrepancy. In a cohort of 309 patients from the Australian Ovarian Cancer Study (AOCS), we found three common single nucleotide polymorphisms (SNPs) in *ABCB1* (C1236T (rs1128503), G2677T/A (rs2032582) and C3435T (rs1045642)) were associated with significant differences in progression-free survival (PFS) for the subgroup of women with ≤ 1 cm residual disease who received paclitaxel and carboplatin first-line chemotherapy. In this subgroup of patients, PFS was significantly longer for individuals who carried the minor T/A alleles at the 2677G>T/A compared with homozygote GG



carriers (HZ = 0.61, 95% CI 0.45–0.83; $p = 0.002$)⁸. A similar effect was demonstrated in 281 patients from Scottish Randomised Trial in Ovarian Cancer 1 (SCOTROC1) who had no residual disease after surgery and received carboplatin and paclitaxel or docetaxel combination chemotherapy⁸. On the basis of these findings, we hypothesised that the association between *ABCB1* genotype and outcome in ovarian cancer may reflect differential cellular transport of paclitaxel in normal and/or cancer cells.

To investigate this, we used cell-based models to evaluate the associations between *ABCB1* genetic polymorphisms, gene expression, transporter activity and paclitaxel sensitivity in both ovarian cancer cell lines and lymphoblastoid cell lines (LCLs) derived from women with ovarian cancer. We reasoned that ovarian cancer cells have multiple and varied genomic and phenotypic alterations that may outweigh any effect of inherited polymorphisms, whereas phenotype-genotype associations may be better appreciated in normal cells such as lymphoblastoid cell lines.

Results

***ABCB1* expression was variable but higher in lymphoblastoid cell lines compared with ovarian cancer cells.** Relative levels of *ABCB1* mRNA expression were determined in 19 LCLs and 10 ovarian cancer cell lines. There was a 20-fold inter-individual variation in *ABCB1* expression in LCLs (Figure 1a). *ABCB1* expression was also variable in ovarian cancer cells although the level of *ABCB1* expression in these cells was very low (Figure 1b).

LCLs eliminated paclitaxel faster than ovarian cancer cell lines. To examine *ABCB1* transporter activity, cellular bodipy-FL-paclitaxel accumulation and efflux were measured in 13 LCLs and six ovarian cancer cell lines selected to cover the spectrum of *ABCB1* expression and paclitaxel sensitivity, using flow cytometry. For these experiments, a range of concentrations of bodipy-FL-paclitaxel was tested and 0.1 μ M was selected as it allowed rapid accumulation and a steady state level of bodipy-FL-paclitaxel that was able to be measured reproducibly by flow cytometry, but had no obvious effect on cell viability during the short exposure time. Following incubation with 0.1 μ M bodipy-FL-paclitaxel, intracellular fluorescence activity reached a steady state in both cell types after 30 minutes (Supplementary Figure 1a). Under these conditions, we found no difference in median intracellular bodipy-FL-paclitaxel fluorescence activity between LCLs and ovarian cancer cells (Figure 2a).

Cellular bodipy-FL-paclitaxel fluorescence intensity decreased over the efflux period (Figure 2b) and exhibited a three-phase elimination pattern - an initial rapid efflux phase in the first three to five minutes, followed by a slower efflux phase up to 15 minutes, usually reaching a plateau phase between 15 to 30 minutes (Supplementary Figures 1b & 1c). The presence of an ABC transporter blocker (verapamil) significantly reduced bodipy-FL-paclitaxel efflux rate in all cell lines, both LCLs ($n = 13$) and ovarian cancer cell lines ($n = 6$), providing supporting evidence that bodipy-FL-paclitaxel efflux was mediated by the *ABCB1* transporter (representative examples shown in Supplementary Figures 1d–1f).

A fitted curve and an efflux constant K_E were generated for each cell line based on a three compartment model using the solver function of Microsoft Excel (Figure 2c). The median efflux K_E was significantly higher in LCLs compared to ovarian cancer cell lines (0.470 vs 0.124, $p = 0.011$) in an independent median test, indicating more rapid efflux of paclitaxel from LCLs (Figure 2d). The range of variation in efflux constant K_E in LCLs (3.6-fold) and ovarian cancer cell lines (3.2-fold) was similar.

***ABCB1* expression was correlated with paclitaxel accumulation and efflux in LCLs.** The relationships between *ABCB1* mRNA relative expression, bodipy-FL-paclitaxel accumulation and efflux constant K_E were assessed in a correlation matrix by Spearman or Pearson correlation tests depending on data distribution. In LCLs, there was an inverse correlation between *ABCB1* expression and intracellular bodipy-FL-paclitaxel accumulation ($R_s = -0.571$, $p = 0.041$), and a positive correlation between *ABCB1* expression and the efflux constant k_E ($R_s = 0.593$, $p = 0.033$) (Table 1). Paclitaxel accumulation correlated strongly with efflux ($R = 0.748$, $p = 0.003$). These results indicated that LCLs expressing higher levels of *ABCB1* accumulated less intracellular paclitaxel and eliminated paclitaxel more efficiently.

In contrast, there was no correlation between *ABCB1* expression and paclitaxel accumulation or efflux in ovarian cancer cell lines (Table 1).

Ovarian cancer cell lines were more resistant to paclitaxel with a wider variation in IC_{50} . The cytotoxicity of paclitaxel was measured in 19 LCLs and 10 ovarian cancer cell lines (Figure 3). There was a 10-fold variation in paclitaxel IC_{50} among ovarian cancer cell lines. PEO14 was the most paclitaxel resistant cell line with an IC_{50} of 15.0 nM, while CAOV-3 the most sensitive with a IC_{50} of 1.5 nM.

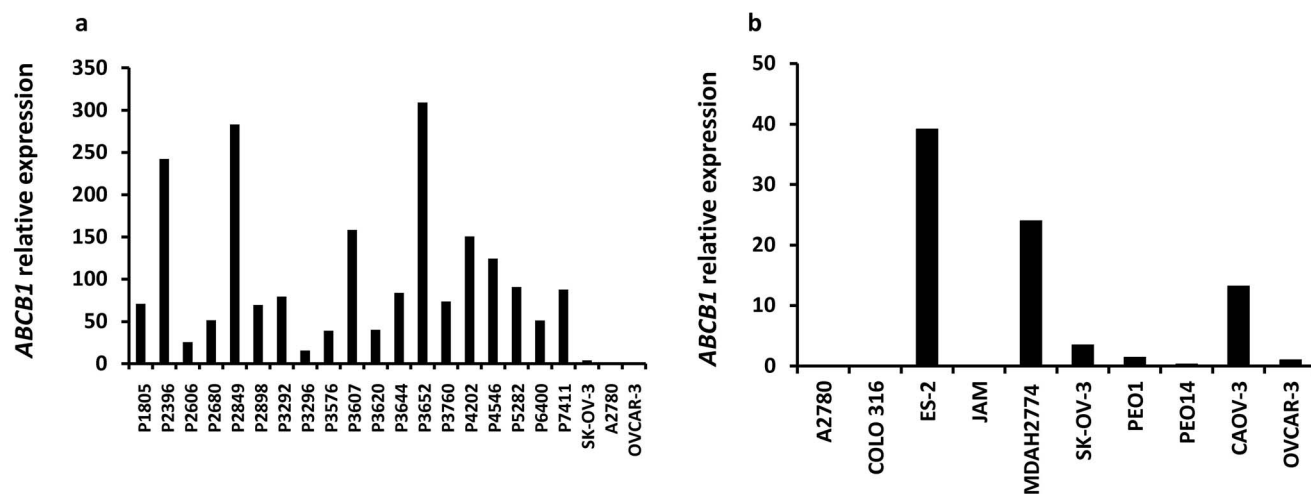


Figure 1 | Relative *ABCB1* expression in lymphoblastoid and ovarian cancer cell lines. *ABCB1* mRNA expression was measured by quantitative RT-PCR in (a) 19 lymphoblastoid cell lines and (b) 10 ovarian cancer cell lines. All results were expressed relative to the level expressed in OVCAR-3. The expression in SK-OV-3, A2780 and OVCAR-3 in (a) were measured in parallel to compare the levels of relative expression between lymphoblastoid cell lines and ovarian cancer cell lines. The results presented were the geometric mean of values normalized to the three control genes *HPRT*, *GUSB* and *PGK1*.

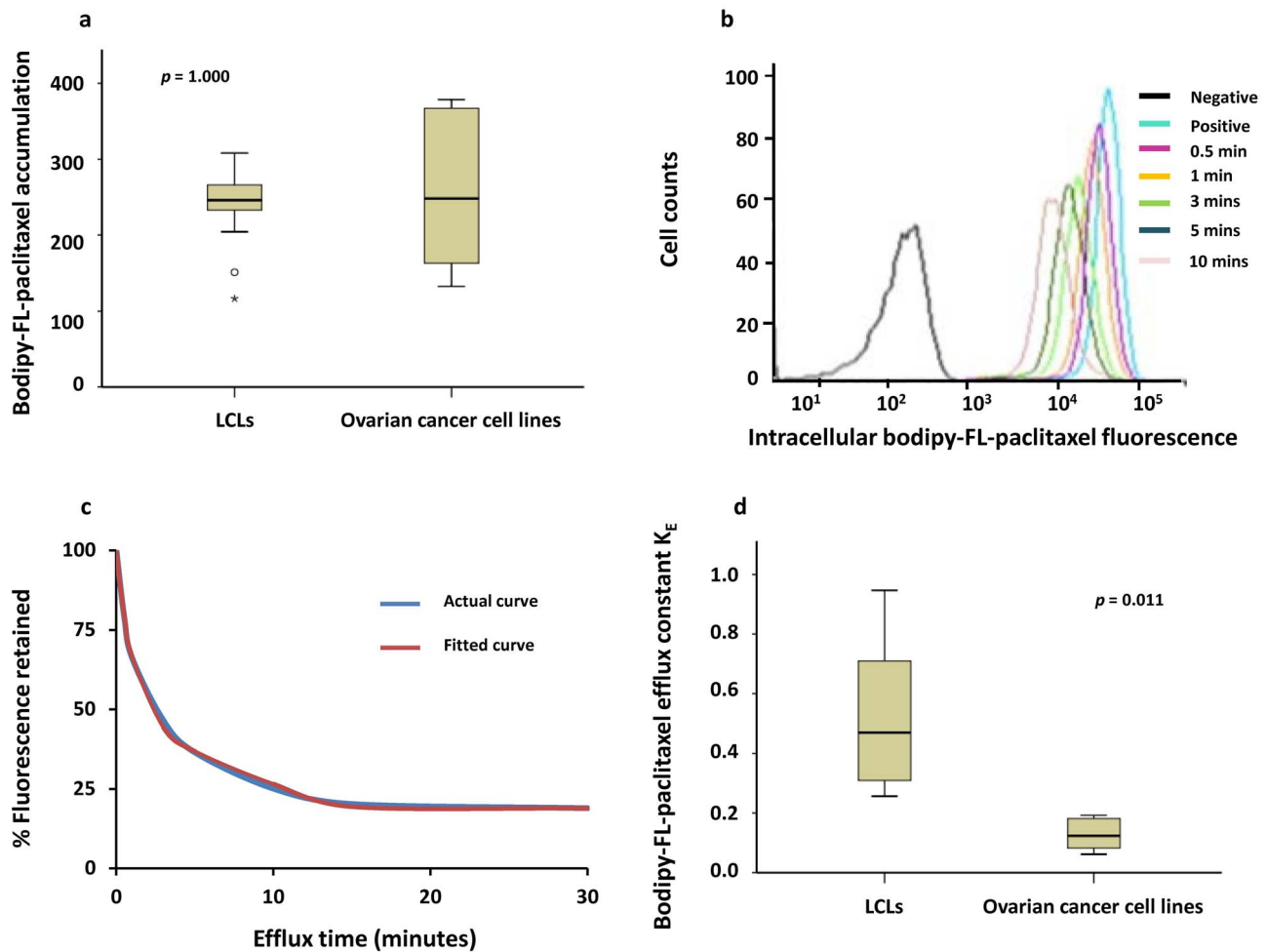


Figure 2 | Cellular accumulation and efflux of bodipy-FL-paclitaxel, a fluorescent ABCB1 substrate in lymphoblastoid and ovarian cancer cell lines measured by flow cytometry. (a) Median bodipy-FL-paclitaxel accumulated in 13 LCLs and six ovarian cancer cell lines, by independent-samples median test; (b) Decreasing bodipy-FL-paclitaxel fluorescence intensity over a 10 minutes efflux time, in one LCL as a representative example; (c) A fitted curve generated by Solve function of Excel as compared to the actual curve of percentage fluorescence retained, in one LCL as a representative example; (d) Median efflux constant K_E in LCLs and ovarian cancer cell lines, by independent-samples median test. All results are mean of at least two independent experiments.

LCLs were generally more sensitive to paclitaxel and had a much smaller (2.4-fold) variation in paclitaxel IC_{50} , ranging from 2.9 to 6.8 nM.

Paclitaxel toxicity correlated with efflux in lymphoblastoid cell lines. In simple linear regression analysis, there was a trend of correlation between ABCB1 expression and paclitaxel IC_{50} ($r = 0.429$, $p = 0.067$) (Figure 4a) and a trend of inverse correlation between paclitaxel accumulation and toxicity ($r = -0.546$, $p =$

0.053) (Figure 4c) in LCLs. The correlation between paclitaxel efflux constant k_E and paclitaxel IC_{50} was strongly positive ($r = 0.819$, $p = 0.001$) (Figure 4e), demonstrating that LCLs that eliminated paclitaxel more efficiently were more resistant to paclitaxel. In multiple linear regression analysis, paclitaxel efflux constant K_E was the only independent variable strongly correlating with paclitaxel IC_{50} (Beta coefficient = 0.945, $p = 0.009$) (Table 2).

There were no associations between paclitaxel cytotoxicity and accumulation or efflux in ovarian cancer cell lines (Figures 4b, 4d

Table 1 | Correlation matrix between ABCB1 relative expression, bodipy-FL-paclitaxel accumulation and efflux constant K_E in lymphoblastoid cell lines and ovarian cancer cell lines using Spearman or Pearson correlation test

		Lymphoblastoid cell lines			Ovarian cancer cell lines		
		ABCB1 expression	Paclitaxel accumulation	Paclitaxel efflux	ABCB1 expression	Paclitaxel accumulation	Paclitaxel efflux
ABCB1 expression	Spearman correlation	1	-0.571	0.593	1	-0.086	0.086
	p value		0.041	0.033		0.872	0.872
Paclitaxel accumulation	Pearson correlation	-0.571	1	0.748	-0.086	1	0.100
	p value	0.041		0.003	0.872		0.850
Paclitaxel efflux	Pearson correlation	0.593	0.748	1	0.086	0.100	1
	p value	0.033	0.003		0.872	0.850	

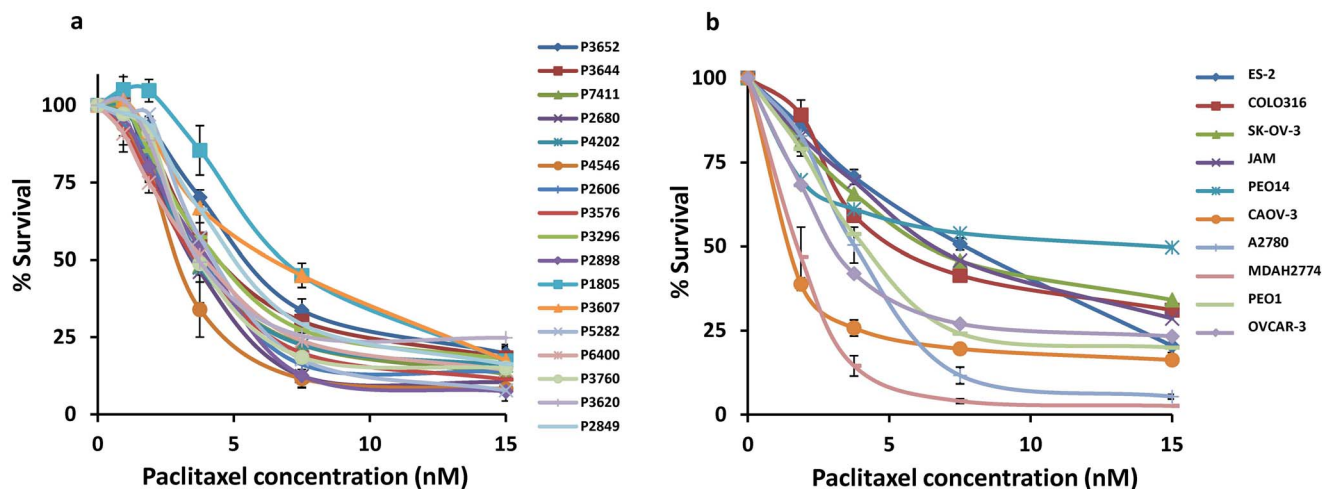


Figure 3 | Inhibition of proliferation by paclitaxel in lymphoblastoid and ovarian cancer cell lines. Effect of paclitaxel on cell proliferation was measured in (a) 19 lymphoblastoid cell lines and (b) 10 ovarian cancer cell lines using the CellTiter AQueous One Solution Cell Proliferation Assay, measured after 72 hrs drug exposure, represented as a percentage of vehicle treated control. Results are mean with standard error of mean of three independent experiments performed in triplicate.

and 4f and Table 2). Exploratory analyses were performed in three ovarian cancer cell lines with relatively high *ABCB1* expression (ES-2, MDAH2774 and CAOV-3). Although there was trend of correlation between *ABCB1* expression and paclitaxel IC_{50} , it was not statistically significant ($p = 0.206$). There was no association between efflux, accumulation and paclitaxel IC_{50} , but the very small sample number ($n = 3$) limited the interpretation of these results.

No associations between *ABCB1* genotype and paclitaxel cytotoxicity or *ABCB1* expression and transporter activity were identified. Common *ABCB1* SNPs were examined in all cell lines. No associations were observed between SNPs in *ABCB1* exon 12 (C1236T), 21 (G2677T/A) and 26 (C3435T) and *ABCB1* expression (Supplementary Figure 2), paclitaxel accumulation, efflux or cytotoxicity in LCLs or ovarian cancer cell lines (Jonckheere-Terpstra test for ordered alternatives) (Figure 5).

Discussion

Several studies have suggested an association between *ABCB1* genotypes and clinical outcome in cancer patients^{9–11}, including ovarian cancer^{5,8,11,12}. To investigate whether this association reflected differences in *ABCB1* mediated transport of paclitaxel in normal or ovarian cancer cells, we compared *ABCB1* expression, paclitaxel efflux, cytotoxicity and polymorphisms in normal and ovarian cancer cell lines under the same experimental conditions. In LCLs there was a clear association between *ABCB1* expression levels, the rate of paclitaxel efflux and cytotoxicity. *ABCB1* is responsible for the apical transport of various chemotherapeutic agents like paclitaxel. The degree of expression and the functionality of the transporter can directly affect the intracellular concentration of paclitaxel, therefore its growth inhibitor effects. As a result, more efficient efflux and higher relative *ABCB1* expression can lead to higher paclitaxel IC_{50} . In contrast, *ABCB1* expression in ovarian cancer cells was very low and not associated with paclitaxel efflux or cytotoxicity.

ABCB1 transporters are expressed and functionally active in all peripheral blood cells, except in granulocytes¹³. The efficient efflux of chemotherapeutic agents in peripheral blood and haematopoietic cells may confer a degree of protection to these cell types. This finding is consistent with the observations of pioneers such as Skipper and Schabel, who found that some cancer cells recovered more slowly (or not at all) compared to the more robust non-cancer cells when incubated together in a high concentration of cytotoxic drugs for hours or days, followed by longer periods of recovery¹⁴.

We found no apparent association between *ABCB1* SNPs and expression, efflux or cytotoxicity in LCLs. This is in contrast with the study of 31 healthy Caucasian volunteers by Hitzl *et al.*, which reported a significant correlation between *ABCB1* genotypes at position 3435 with the efflux of rhodamine, an *ABCB1* substrate, from freshly isolated CD56⁺ natural killer cells¹⁵. They also demonstrated a correlation between genotype and mRNA expression in leukocytes. Specifically these investigators reported that subjects who were homozygous CC at position 3435 had faster rhodamine efflux from CD56⁺ natural killer cells and higher *ABCB1* mRNA expression in leukocytes than subjects with the TT genotype. More recently Wong *et al.* reported that *ABCB1* genotype was associated with hepatic elimination of *ABCB1* substrate technetium Tc99m-labeled sestamibi in a cohort of cancer patients¹⁶. In their study, patients with CC genotype at position 3435 of *ABCB1* gene had faster hepatic sestamibi clearance than TT genotype. These data indicated potential genotype related differences in *ABCB1* function, which are consistent with our clinical findings in ovarian cancer patients showing women with CC genotype at position 3435 had worse PFS⁸.

Limitations of this study to detect an association between *ABCB1* genotype and paclitaxel effect in normal cells include low levels of absolute *ABCB1* expression in LCLs, compared to liver and bowel; the relatively small number of LCLs examined ($n = 19$), and the potential impact of exogenous factors during the process of EBV-transformation and *in vitro* growth that may modify the phenotypes compared with *in vivo* analyses.

ABCB1 is over-expressed in tumors that originate from tissues expressing physiologically high levels of *ABCB1* such as adrenal gland, kidney, liver and colon¹⁷. In cell lines derived from these tumors, an inverse correlation between *ABCB1* expression and sensitivities to chemotherapeutic drugs that are substrates of *ABCB1* transport has been observed^{18–20}. Consistent with the reported low level expression in normal ovaries and untreated epithelial ovarian cancer^{3,21}, we found *ABCB1* was expressed at very low levels in the panel of 10 ovarian cancer cell lines. The presence of verapamil, an *ABCB1* blocker, inhibited paclitaxel efflux in all ovarian cancer cell lines tested regardless of the level of *ABCB1* expression, suggesting *ABCB1* transporter is functional in all ovarian cancer cell lines. Despite the lower levels of *ABCB1* expression and less efficient paclitaxel elimination, some ovarian cancer cell lines were more resistant to paclitaxel than LCLs. Ovarian cancer cells have multiple genomic alterations and the loss of association between *ABCB1* expression, paclitaxel elimination and paclitaxel resistance could

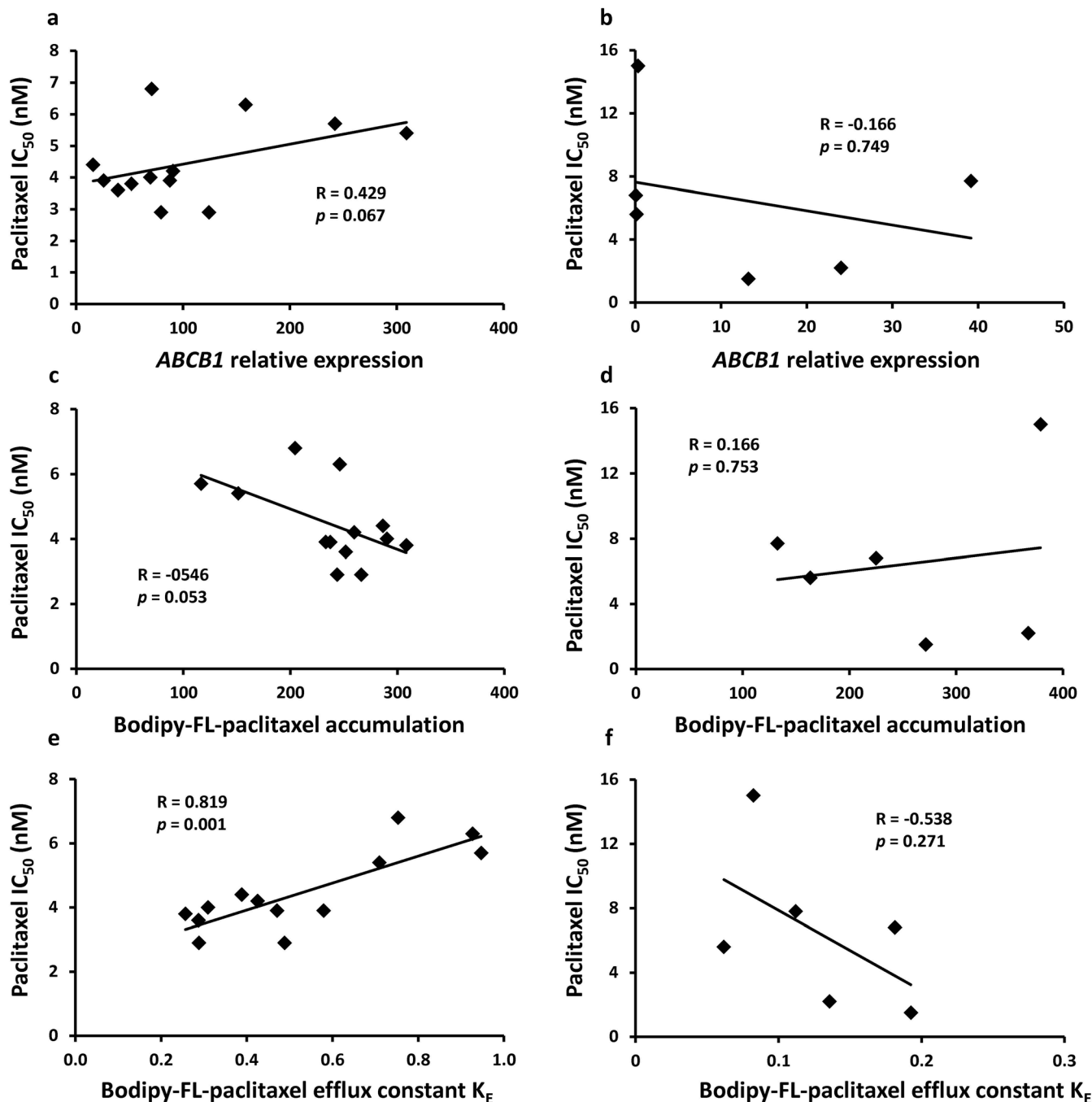


Figure 4 | Relationship between growth inhibitory effects of paclitaxel, *ABCB1* expression and cellular drug accumulation and efflux. Paclitaxel growth inhibitory effect (IC_{50}) was determined in 13 lymphoblastoid cell lines (a), (c) and (e) and 6 ovarian cancer cell lines (b), (d) and (f) by CellTitre AQueous One Solution Cell Proliferation Assay after 72 hrs drug exposure. *ABCB1* mRNA expression (a) and (b) was measured by RT-PCR and bodipy-FL-paclitaxel accumulation (c) and (d) and efflux (e) and (f) were measured by flow cytometry. The correlation between paclitaxel IC_{50} and *ABCB1* expression (a) and (b), paclitaxel IC_{50} and drug accumulation (c) and (d) and the correlation between IC_{50} and drug efflux constant K_E (e) and (f) were determined by simple linear regression analysis.

Table 2 | Multiple linear regression analysis of *ABCB1* expression, bodipy-FL-paclitaxel accumulation, efflux and paclitaxel IC_{50}

	Lymphoblastoid cell lines				Ovarian cancer cell lines			
	Unstandardized		Standardized		Unstandardized		Standardized	
	coefficients		coefficients		coefficients		coefficients	
	B	SE	Beta	p	B	SE	Beta	p
<i>ABCB1</i> expression	-0.002	0.004	-0.114	0.723	-0.062	0.175	-0.206	0.757
Paclitaxel accumulation	0.002	0.008	0.070	0.849	0.008	0.027	0.171	0.795
Paclitaxel efflux	4.851	1.456	0.945	0.009	-49.444	52.27	-0.535	0.444

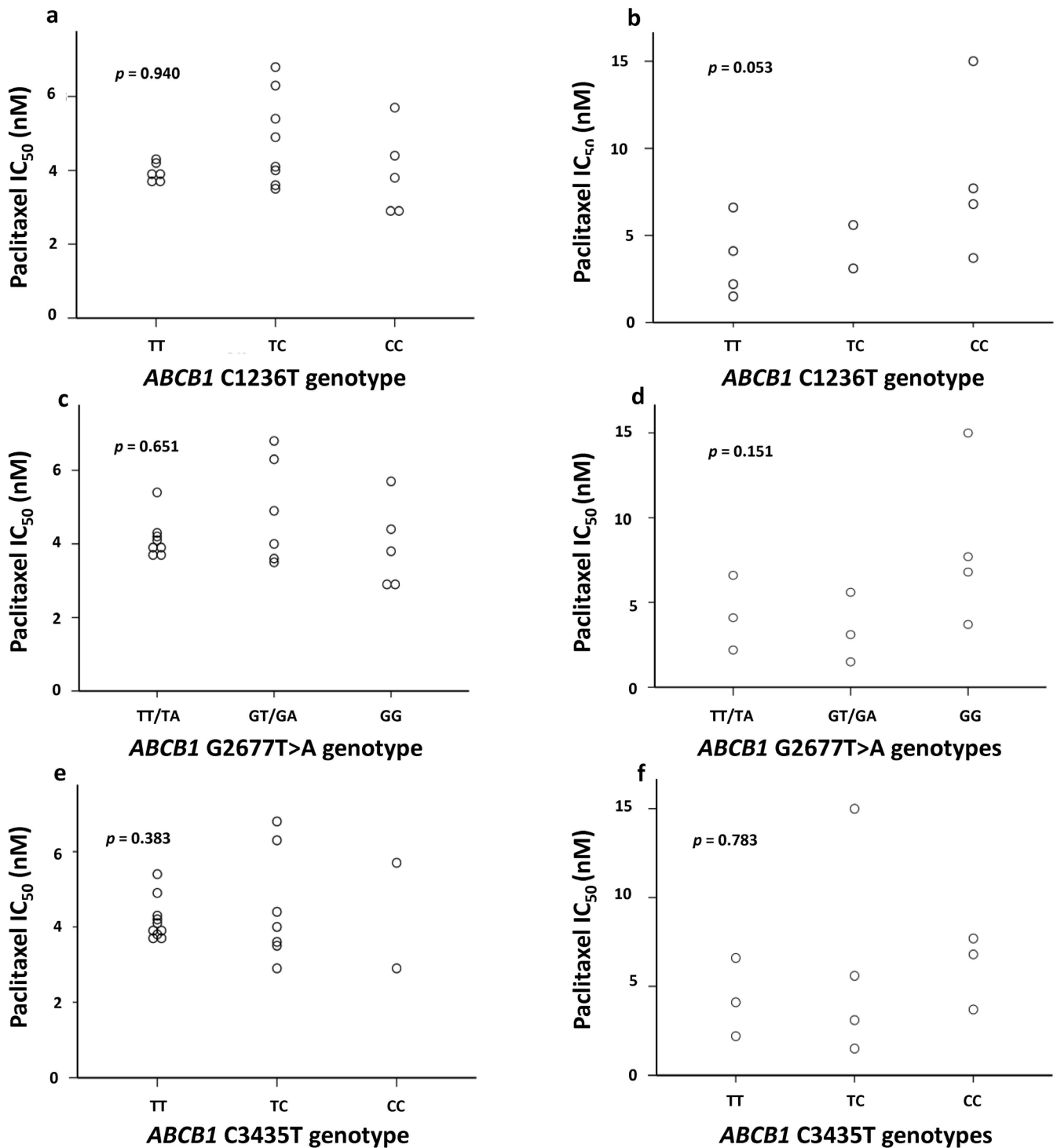


Figure 5 | Association between growth inhibitory effects of paclitaxel and *ABCB1* genotypes. Paclitaxel growth inhibitory effects (IC_{50}) were determined in 19 lymphoblastoid cell lines (a), (c) and (e) and 10 ovarian cancer cell lines (b), (d) and (f), by CellTitre AQueous One Solution Cell Proliferation Assay after 72 hrs drug exposure. *ABCB1* genotype was determined by iPLEX genotyping on Sequenom's MassARRAY platform. Associations between IC_{50} and *ABCB1* genotypes at C1236T (a) and (b), G2677T/A (c) and (d) and C3435T (e) and (f) were analysed by Jonckheere-Terpstra test.

be due to a variety of factors including somatic mutations²², onco-gene expression and amplification or inappropriate growth factor regulation²³ in ovarian cancer cells. Other factors that could potentially contribute to paclitaxel resistance despite low *ABCB1* expression in ovarian cancer cells, include alterations in tubulin binding and dynamics due to tubulin mutation²⁴, altered expression of

microtubule-associated proteins (MAP)²⁵ and decreased sensitivity to apoptosis-induced stimuli.

Genomic differences between cancer cell lines and tissue samples have been pointed out in several studies^{22,26,27}. So primary ovarian cancer cells, freshly isolated from either solid tumor or malignant ascites, may offer an experimental system that resembles the patient's



situation more closely. The ovarian cancer cell lines used in this study were derived from tumors of various histological subtypes and carry a variety of mutations²². Restricting analyses to cell lines with a similar histological/genomic profile may yield a different result.

Although our study did not confirm the presence of an *ABCB1* genotype-phenotype correlation in LCLs or ovarian cancer cell lines, the strong association we found between *ABCB1* expression, transporter function and paclitaxel cytotoxicity in LCLs, together with the very low level *ABCB1* expression in the panel of 10 ovarian cancer cell lines, suggests that the observed *ABCB1* genotype-related outcome differences in ovarian cancer patients is more likely to be due to differential, whole body elimination of paclitaxel rather than a direct effect on cancer tissues. Few studies published to date have assessed the effects of *ABCB1* genotypes on paclitaxel clearance in ovarian cancer patients^{7,28,29}, and the results have been contradictory. Possible reasons include small patient numbers and significant variation in paclitaxel dosage and infusion time. Our results suggest that further detailed assessment of the effect of SNPs in *ABCB1*, and potentially SNPs in other genes on paclitaxel clearance and ultimate association with ovarian cancer survival is warranted.

Methods

Cell line authentication and culture conditions. EBV-transformed B-lymphoblastoid cell lines (LCLs) from 19 Caucasian ovarian cancer patients were obtained through the Australian Ovarian Cancer Study (AOCS)³⁰. Human ovarian cancer cell lines A2780, COLO316, JAM, PEO1, PEO14, OVCAR-3 (Professor Georgia Chenevix-Trench, QIMR Berghofer Medical Research Institute, Australia), CAO-3, ES-2 and SK-OV-3 (ATCC, Manassas, VA, USA) were authenticated by STR profiling (Promega Cell ID System, Promega Corporation, Madison WI, USA) against published profiles. MDAH2774 was profiled, but no reference was available for comparison.

LCLs and ovarian cancer cells were maintained in RPMI 1640 (Invitrogen Corporation, Carlsbad CA, USA) supplemented with 15% and 10% fetal calf serum (SACF Biosciences, Lenexa KS, USA) v/v respectively. All cells were grown at 37°C in a humidified atmosphere containing 5% CO₂. Cells were tested regularly for *Mycoplasma* contamination and shown to be negative.

This study was approved by the Western Sydney Local Health District and Queensland Institute of Medical Research Human Research Ethics Committees, and AOCS was approved by the Human Research Ethics Committees at the Peter MacCallum Cancer Centre, Queensland Institute of Medical Research, University of Melbourne and all participating hospitals. Methods were carried out in accordance with the approved guidelines and informed consent was obtained from all subjects.

***ABCB1* genotyping.** Genomic DNA was extracted using DNeasy Blood & Tissue Kit (Qiagen, Hilden, Germany). Common *ABCB1* SNPs at exon 12 (C1236T), 21 (G2677T/A) and 26 (C3435T) were examined by iPLEX genotyping on Sequenom's MassARRAY platform⁸.

Expression of *ABCB1* mRNA by real-time PCR. RNA was extracted using the RNeasy Mini Kit (Qiagen GmbH, Hilden, Germany). RNA was reverse transcribed with MMLV reverse transcriptase (Life Technologies, Carlsbad CA, USA) as previously described³¹. Real-time PCR quantitation of gene expression utilising TaqMan[®] gene expression assays (*ABCB1*, assay ID Hs00184500 m1; *GUSB*, assay ID 4326320E; *HPRT*, assay ID 4326321E; *PGK1*, assay ID 4326318E) were conducted using a 7900HT Fast Real-Time PCR system (Applied Biosystems, Foster City CA, USA). Gene expression levels were determined using the $\Delta\Delta Ct$ method and expressed relative to a calibrator. Expression values were calculated as the geometric mean of values normalized to the three control genes *HPRT*, *GUSB* and *PGK1*.

Paclitaxel growth inhibition assay. Drug concentrations that inhibited 50% of cell growth (IC₅₀) were determined using the CellTiter AQueous One Solution Cell Proliferation Assay (Promega, Madison WI, USA). Briefly, cell suspensions (100 μ L, 5000 cells for LCLs and 10000 cells for cancer cell lines) were plated in 96-well flat bottom plates. After 24-h incubation, cells were treated with 50 μ L of increasing concentrations (0–15 nM) of paclitaxel injection solution (Sigma-Aldrich Inc, St Louis MA, USA) and vehicle control (Cremophor EL™ and dehydrated ethanol USP (1 : 1, v/v)) for 72 hours before adding 30 μ L of MTS reagent. Following 3-h incubation, absorbance at 490 nm was recorded on a Wallac Victor² 1420 Multilabel Counter (Perkin Elmer Life Sciences, Waltham, MA, USA). Percent survival was quantified according to the manufacturer's protocol. Paclitaxel IC₅₀ was determined by curve fitting of percentage cell survival against concentrations of paclitaxel. All experiments were conducted at least three experiments in triplicate.

Bodipy-FL-paclitaxel accumulation and efflux assay. To allow bodipy-FL-paclitaxel (Invitrogen, Carlsbad CA, USA) accumulation, cell suspensions at densities of 10⁶ cells per mL were incubated with bodipy-FL-paclitaxel at a concentration of 0.1 μ M for 30 minutes at 37°C and 5% CO₂. After accumulation, cells were aliquoted into

Eppendorf tubes (Eppendorf, Hamburg, Germany) (1 mL per tube) on ice, centrifuged for 5 minutes at 400 g at 4°C and washed twice with ice old PBS to remove extracellular bodipy-FL-paclitaxel.

After washing, the positive control sample was resuspended in 1 mL ice-cold medium for the measurement of the baseline fluorescence using a FACSCanto flow cytometer (488 nm, 20 mW laser; 530/30 band pass filter) (BD Biosciences, Franklin Lakes, New Jersey, USA). The remaining samples were resuspended in 1 mL 37°C medium and incubated at 37°C for 0.5, 1, 3, 5, 10, 15 and 30 minutes respectively to allow paclitaxel efflux. Three samples were incubated in medium containing verapamil (Abbott Australasia, Botany, Australia) at a concentration of 1 μ g/mL for 5, 10 and 15 minutes respectively.

Appropriate threshold values were set to exclude clumps and debris, and samples were gated on forward scatter vs side scatter to include lymphoblastoid or cancer cell populations. A minimum of 10,000 events were collected per sample. Data was expressed as median bodipy-FL-paclitaxel fluorescence. Bodipy-FL-paclitaxel fluorescence in control sample, after baseline dye uptake, was set as 100%. Bodipy-FL-paclitaxel fluorescence in efflux samples, exposed to different efflux time periods, was used to calculate the percentage of bodipy-FL-paclitaxel retained in the cells in comparison with control.

Pharmacokinetic modelling of bodipy-FL-paclitaxel cellular elimination.

Intracellular paclitaxel fluorescence intensity is the combined result of active efflux through *ABCB1* transporter, passive diffusion/efflux through the cell membrane and redistribution of the fluorescence from medium into the cells at the late phase of efflux assay. Hence a three compartment model was developed to reflect the changes. The summation of the kinetics of intra-cellular fluorescence resulted in an exponential equation of the following form: percentage of intra-cellular fluorescence at time $t = Ae^{-k_E t} + Be^{-k_D t} + Ce^{-k_R t}$, where A, B and C are constants; k_E is the active efflux constant; k_D is the passive diffusion/efflux constant and k_R is the redistribution constant. This equation was derived from fluorescence data of cell lines by the use of the solver function of Microsoft Excel (Office XP; Microsoft Corp, Redmond, Wash, USA). The efflux constant (k_E) was used as the measure of bodipy-FL-paclitaxel cellular efflux rate and *ABCB1* transporter activity.

Statistical analysis. Spearman or Pearson correlation tests were used to assess the relationships between *ABCB1* expression, bodipy-FL-paclitaxel accumulation and efflux constant k_E . Linear regression analysis was performed to assess their impacts on paclitaxel IC₅₀. Independent median test was used to compare the median bodipy-FL-paclitaxel accumulation and efflux between LCLs and ovarian cancer cell lines. Nonparametric Jonckheere-Terpstra test was used to compare the distribution of *ABCB1* expression, paclitaxel cytotoxicity and bodipy-FL-paclitaxel efflux constant k_E between cell lines of different genotypes. All calculations were performed with SPSS for Windows v21 (SPSS, Chicago, Ill, USA). All tests are two-tailed and p-values ≤ 0.05 were considered to be of statistical significance.

- Cannistra, S. A. Cancer of the ovary. *The N Engl J Med* **351**, 2519–2529 (2004).
- Bosch, T. M. Pharmacogenomics of drug-metabolizing enzymes and drug transporters in chemotherapy. *Methods Mol Bio* **448**, 63–76 (2008).
- Goldstein, L. J. *et al.* Expression of a multidrug resistance gene in human cancers. *J Natl Cancer Inst* **81**, 116–124 (1989).
- Cascorbi, I. Role of pharmacogenetics of ATP-binding cassette transporters in the pharmacokinetics of drugs. *Pharmacol Ther* **112**, 457–473 (2006).
- Green, H., Soderkvist, P., Rosenberg, P., Horvath, G. & Peterson, C. mdr-1 single nucleotide polymorphisms in ovarian cancer tissue: G2677T/A correlates with response to paclitaxel chemotherapy. *Clin Cancer Res* **12**, 854–859 (2006).
- Tian, C. *et al.* Common variants in *ABCB1*, *ABCC2* and *ABCG2* genes and clinical outcomes among women with advanced stage ovarian cancer treated with platinum and taxane-based chemotherapy: a Gynecologic Oncology Group study. *Gynecol Oncol* **124**, 575–581 (2012).
- Bergmann, T. K. *et al.* Impact of CYP2C8*3 on paclitaxel clearance: a population pharmacokinetic and pharmacogenomic study in 93 patients with ovarian cancer. *Pharmacogenomics J* **11**, 113–120 (2011).
- Johnatty, S. E. *et al.* *ABCB1* (MDR 1) polymorphisms and progression-free survival among women with ovarian cancer following paclitaxel/carboplatin chemotherapy. *Clin Cancer Res* **14**, 5594–5601 (2008).
- Panczyk, M. *et al.* *ABCB1* gene polymorphisms and haplotype analysis in colorectal cancer. *Int J Colorectal Dis* **24**, 895–905 (2009).
- Yang, J. J. *et al.* Genome-wide association study identifies germline polymorphisms associated with relapse of childhood acute lymphoblastic leukemia. *Blood* **120**, 4197–4204 (2012).
- Levy, P. *et al.* Influence of *ABCB1* polymorphisms and docetaxel pharmacokinetics on pathological response to neoadjuvant chemotherapy in breast cancer patients. *Breast Cancer Res Treat* **139**, 421–428 (2013).
- Obata, H., Yahata, T., Quan, J., Sekine, M. & Tanaka, K. Association between single nucleotide polymorphisms of drug resistance-associated genes and response to chemotherapy in advanced ovarian cancer. *Anticancer Res* **26**, 2227–2232 (2006).
- Drach, D. *et al.* Subpopulations of normal peripheral blood and bone marrow cells express a functional multidrug resistant phenotype. *Blood* **80**, 2729–2734 (1992).



14. Skipper, H. E., Schabel, F. M., Jr. & Wilcox, W. S. Experimental Evaluation of Potential Anticancer Agents. Xiii. On the Criteria and Kinetics Associated with "Curability" of Experimental Leukemia. *Cancer Chemother Rep* **35**, 1–111 (1964).
15. Hitzl, M. *et al.* The C3435T mutation in the human MDR1 gene is associated with altered efflux of the P-glycoprotein substrate rhodamine 123 from CD56+ natural killer cells. *Pharmacogenetics* **11**, 293–298 (2001).
16. Wong, M. *et al.* Hepatic technetium Tc 99m-labeled sestamibi elimination rate and ABCB1 (MDR1) genotype as indicators of ABCB1 (P-glycoprotein) activity in patients with cancer. *Clin Pharmacol Ther* **77**, 33–42 (2005).
17. Fojo, A. T. *et al.* Expression of a multidrug-resistance gene in human tumors and tissues. *Proc Natl Acad Sci U S A* **84**, 265–269 (1987).
18. Park, J. G. *et al.* MDR1 gene expression: its effect on drug resistance to doxorubicin in human hepatocellular carcinoma cell lines. *J Natl Cancer Inst* **86**, 700–705 (1994).
19. Efferth, T., Lohrke, H. & Volm, M. Correlations between natural resistance to doxorubicin, proliferative activity, and expression of P-glycoprotein 170 in human kidney tumor cell lines. *Urol Res* **18**, 309–312 (1990).
20. Guichard, S. M., Macpherson, J. S., Thurston, D. E. & Jodrell, D. I. Influence of P-glycoprotein expression on in vitro cytotoxicity and in vivo antitumour activity of the novel pyrrolobenzodiazepine dimer SJG-136. *Eur J Cancer* **41**, 1811–1818 (2005).
21. Johnatty, S. E. *et al.* ABCB1 (MDR1) polymorphisms and ovarian cancer progression and survival: a comprehensive analysis from the Ovarian Cancer Association Consortium and The Cancer Genome Atlas. *Gynecol Oncol* **131**, 8–14 (2013).
22. Domcke, S., Sinha, R., Levine, D. A., Sander, C. & Schultz, N. Evaluating cell lines as tumour models by comparison of genomic profiles. *Nat Commun* **4**, 2126 (2013).
23. Slamon, D. J. *et al.* Studies of the HER-2/neu proto-oncogene in human breast and ovarian cancer. *Science* **244**, 707–712 (1989).
24. Orr, G. A., Verdier-Pinard, P., McDaid, H. & Horwitz, S. B. Mechanisms of Taxol resistance related to microtubules. *Oncogene* **22**, 7280–7295 (2003).
25. Smoter, M. *et al.* The role of Tau protein in resistance to paclitaxel. *Cancer Chemother Pharmacol* **68**, 553–557 (2011).
26. Ertel, A., Verghese, A., Byers, S. W., Ochs, M. & Tozeren, A. Pathway-specific differences between tumor cell lines and normal and tumor tissue cells. *Mol Cancer* **5**, 55 (2006).
27. Stein, W. D., Litman, T., Fojo, T. & Bates, S. E. A Serial Analysis of Gene Expression (SAGE) database analysis of chemosensitivity: comparing solid tumors with cell lines and comparing solid tumors from different tissue origins. *Cancer Research* **64**, 2805–2816 (2004).
28. Green, H. *et al.* Pharmacogenetic studies of Paclitaxel in the treatment of ovarian cancer. *Basic Clin Pharmacol Toxicol* **104**, 130–137 (2009).
29. Yamaguchi, H. *et al.* Genetic variation in ABCB1 influences paclitaxel pharmacokinetics in Japanese patients with ovarian cancer. *Int J Gynecol Cancer* **16**, 979–985 (2006).
30. Tothill, R. W. *et al.* Novel molecular subtypes of serous and endometrioid ovarian cancer linked to clinical outcome. *Clin Cancer Res* **14**, 5198–5208 (2008).
31. Haber, M. *et al.* Association of high-level MRP1 expression with poor clinical outcome in a large prospective study of primary neuroblastoma. *J Clin Oncol* **24**, 1546–1553 (2006).

Acknowledgments

This project was supported by the National Health and Medical Research Council (NHMRC) of Australia (scholarship to B.G.), Cancer Institute New South Wales and Cancer Australia (552481). AdeF is funded by the University of Sydney Cancer Research Fund and the Cancer Institute NSW through the Sydney-West Translational Cancer Research Centre.

We gratefully acknowledge the cooperation of the institutions that supported the study. We also acknowledge the contribution of Australian Ovarian Cancer Study Group (full list can be found at <http://www.aocstudy.org>), all study nurses and research assistants and would like to thank all of the women who participated in AOCs. AOCs was supported by U.S. Army Medical Research and Materiel Command DAMD17-01-1-0729, NHMRC Enabling Grant 400413 and Project Grant 400281, the Cancer Council Tasmania and the Cancer Foundation of Western Australia.

Author contributions

B.G., R.B. and A.deF. wrote the main manuscript and were responsible for project design and conduct; B.G. conducted most of the experiments and prepared Figures 1–5, and Supplementary Figures 1 and 2; A.R., M.He., M.Ha. and M.N. contributed to data for Figures 1, 3, 5 and Supplementary Figure 2. J.B., X.Q.C., S.H., S.J. and G.C.-T. contributed to data for Figure 5 and Supplementary Figure 2; the Australian Ovarian Cancer Study, L.G. and D.B. provided study materials used in Figures 1–5, and Supplementary Figures 1 and 2; M.W., C.E. and P.H. contributed to data analysis and interpretation. All authors reviewed the manuscript.

Additional information

Supplementary information accompanies this paper at <http://www.nature.com/scientificreports>

Competing financial interests: The authors declare no competing financial interests.

How to cite this article: Gao, B. *et al.* Paclitaxel sensitivity in relation to ABCB1 expression, efflux and single nucleotide polymorphisms in ovarian cancer. *Sci. Rep.* **4**, 4669; DOI:10.1038/srep04669 (2014).



This work is licensed under a Creative Commons Attribution-NonCommercial-NoDerivs 3.0 Unported License. The images in this article are included in the article's Creative Commons license, unless indicated otherwise in the image credit; if the image is not included under the Creative Commons license, users will need to obtain permission from the license holder in order to reproduce the image. To view a copy of this license, visit <http://creativecommons.org/licenses/by-nc-nd/3.0/>



*Members of the Australian Ovarian Cancer Study Group:

David Bowtell^{1,2}, Georgia Chenevix-Trench³, Anna deFazio⁴, Dorota Gertig⁵, Adèle Green³, Penelope Webb³, Jillian Hung⁴, Sue Moore³, Nadia Traficante¹, Sian Fereday¹, Karen Harrap³, Troy Sadkowsky³, Nirmala Pandeya³, Robin Stuart-Harris⁶, Fred Kirsten⁷, Josie Rutovitz⁸, Peter Clingan⁹, Amanda Glasgow⁹, Anthony Proietto¹⁰, Stephen Braye¹⁰, Greg Otton¹⁰, Jennifer Shannon¹¹, Tony Bonaventura¹², James Stewart¹², Stephen Begbie¹³, Michael Friedlander¹⁴, David Bell¹⁵, Sally Baron-Hay¹⁵, Alan Ferrier¹⁵ (dec.), Greg Gard¹⁵, David Nevell¹⁵, Nick Pavlakis¹⁵, Sue Valmadre¹⁵, Barbara Young¹⁵, Catherine Camaris¹⁶, Roger Crouch¹⁶, Lyndal Edwards¹⁶, Neville Hacker¹⁶, Donald Marsden¹⁶, Greg Robertson¹⁶, Phillip Beale¹⁷, Jane Beith¹⁷, Jonathan Carter¹⁷, Chris Dalrymple¹⁷, Anne Hamilton¹⁷, Roger Houghton¹⁷, Peter Russell¹⁷, Matthew Links¹⁸, John Grygiel¹⁹, Jane Hill²⁰, Alison Brand²¹, Karen Byth²¹, Richard Jaworski²¹, Paul Harnett²¹, Raghwa Sharma²¹, Anita Achen²¹, Gerard Wain²¹, Bruce Ward²², David Papadimos²², Alex Crandon²³, Margaret Cummings²³, Ken Horwood²³, Andreas Obermair²³, Lew Perrin²³, David Wyld²³, Jim Nicklin^{23,24}, Margaret Davy²⁵, Martin K Oehler²⁵, Chris Hall²⁵, Tom Dodd²⁵, Tabitha Healy²⁵, Ken Pittman²⁵, Doug Henderson²⁶, John Miller²⁷, John Pierdes²⁷, Penny Blomfield²⁸, David Challis²⁸, Robert McIntosh²⁸, Andrew Parker²⁸, Bob Brown²⁹, Robert Rome²⁹, David Allen³⁰, Peter Grant³⁰, Simon Hyde³⁰, Rohan Laurie³⁰, Melissa Robbie³⁰, David Healy³¹, Tom Jobling³¹, Tom Manolitsas³¹, Jane McNealage³¹, Peter Rogers³¹, Beatrice Susil³¹, Eric Sumithran³¹, Ian Simpson³¹, Kelly Phillips¹, Danny Rischin¹, Stephen Fox¹, Daryl Johnson¹, Paul Waring¹, Stephen Lade¹, Maurice Loughrey¹, Neil O'Callaghan¹, William Murray¹, Virginia Billson³², Jan Pyman³², Debra Neesham³², Michael Quinn³², Craig Underhill³³, Richard Bell³⁴, Leong-Fook Ng³⁵, Robert Blum³⁶, Vinod Ganju³⁷, Ian Hammond³⁸, Yee Leung³⁸, Anthony McCartney³⁹ (dec.), Martin Buck⁴⁰, Izak Haviv¹, David Purdie³, David Whiteman³, Nikolajs Zeps^{41,42}, Mary-Rose Malt³, Anne Mellon¹⁰, Randall Robertson¹⁰, Trish Vanden Bergh¹⁶, Marian Jones¹⁶, Patricia Mackenzie¹⁶, Jane Maidens¹⁵, Kath Nattress¹⁷, Yoke-Eng Chiew^{4,21}, Annie Stenlake²¹, Helen Sullivan²¹, Barbara Alexander³, Pat Ashover³, Sue Brown³, Tracy Corrish³, Lyn Green³, Leah Jackman³, Kaitin Ferguson³, Karen Martin³, Adam Martyn³, Barbara Ranieri³, Jo White^{25,26,27}, Victoria Jayde²⁸, Leanne Bowes¹, Pamela Mammers³¹, Laura Galletta¹, Debra Giles¹, Joy Hendley¹, Katherine Alsop¹, Trudy Schmidt⁴¹, Helen Shirley⁴¹, Colleen Ball⁴¹, Cherry Young⁴¹, Suzanna Viduka⁴¹, Hoa Tran⁴¹, Sanela Bilic⁴¹, Lydia Glavinias⁴¹, Julia Brooks⁴²

¹Peter MacCallum Cancer Centre, Melbourne, Australia, ²Sir Peter MacCallum Department of Oncology, Department of Pathology and Department of Biochemistry and Molecular Biology, University of Melbourne, Melbourne, Australia, ³QIMR Berghofer Medical Research Institute, Brisbane, Australia, ⁴Westmead Institute for Cancer Research, University of Sydney at Westmead Millennium Institute, Sydney, Australia, ⁵Victorian Cervical Cytology Registry, Melbourne, Australia, ⁶Canberra Hospital, Canberra, ACT, Australia, ⁷Bankstown Hospital, Sydney, NSW, Australia, ⁸Hornsby Hospital, Sydney, NSW, Australia, ⁹Illawarra Area Health Services, Wollongong, NSW, Australia, ¹⁰John Hunter Hospital, Newcastle, NSW, Australia, ¹¹Nepean Hospital, Sydney, NSW, Australia, ¹²Newcastle Mater Misericordiae Hospital, Newcastle, NSW, Australia, ¹³Port Macquarie Base Hospital, Port Macquarie, NSW, Australia, ¹⁴Prince of Wales Hospital, Sydney, NSW, Australia, ¹⁵Royal North Shore Hospital, Sydney, NSW, Australia, ¹⁶Royal Hospital for Women, Sydney, NSW, Australia, ¹⁷Royal Prince Alfred Hospital, Sydney, NSW, Australia, ¹⁸St George Hospital, Sydney, NSW, Australia, ¹⁹St Vincent's Hospital, Sydney, NSW, Australia, ²⁰Wagga Wagga Base Hospital, Wagga Wagga, NSW, Australia, ²¹Westmead Hospital, Sydney, NSW, Australia, ²²Mater Misericordiae Hospitals, Brisbane, Queensland, Australia, ²³Royal Women's Hospital, Brisbane, Queensland, Australia, ²⁴Wesley Hospital, Brisbane, Queensland, Australia, ²⁵Royal Adelaide Hospital and Burnside Memorial Hospital, Adelaide, SA, Australia, ²⁶Flinders Medical Centre, Adelaide, SA, Australia, ²⁷Queen Elizabeth Hospital, Adelaide, SA, Australia, ²⁸Royal Hobart Hospital, Hobart, Tasmania, Australia, ²⁹Freemasons Hospital, Melbourne, Victoria, Australia, ³⁰Mercy Hospital for Women, Melbourne, Victoria, Australia, ³¹Monash Medical Centre, Melbourne, Victoria, Australia, ³²Royal Women's Hospital, Melbourne, Victoria, Australia, ³³Border Medical Oncology, Wodonga, Victoria, Australia, ³⁴Andrew Love Cancer Centre, Geelong, Victoria, Australia, ³⁵Ballarat Base Hospital, Ballarat, Victoria, Australia, ³⁶Bendigo Health Care Group, Bendigo, Victoria, Australia, ³⁷Peninsula Health, Frankston, Victoria, Australia, ³⁸School for Women's and Infants' Health, University of Western Australia and the Western Australian Gynaecologic Cancer Service, Perth, WA, Australia, ³⁹King Edward Memorial Hospital, Perth, WA, Australia, ⁴⁰Mount Hospital, Perth, WA, Australia, ⁴¹WARTN, Western Australia Research Tissue Network, Perth, WA, Australia, ⁴²St John of God Hospital, Perth, WA, Australia.