



Minerva Access is the Institutional Repository of The University of Melbourne

Author/s:

Mol, A; Woltering, JHH; Colier, WNJM; Maier, AB; Meskers, CGM; van Wezel, RJA

Title:

Sensitivity and reliability of cerebral oxygenation responses to postural changes measured with near-infrared spectroscopy

Date:

2019-05-01

Citation:

Mol, A., Woltering, J. H. H., Colier, W. N. J. M., Maier, A. B., Meskers, C. G. M. & van Wezel, R. J. A. (2019). Sensitivity and reliability of cerebral oxygenation responses to postural changes measured with near-infrared spectroscopy. *European Journal of Applied Physiology*, 119 (5), pp.1117-1125. <https://doi.org/10.1007/s00421-019-04101-0>.

Persistent Link:

<https://hdl.handle.net/11343/250483>

License:

CC BY



# Sensitivity and reliability of cerebral oxygenation responses to postural changes measured with near-infrared spectroscopy

Arjen Mol<sup>1,2</sup> · Jeffrey H. H. Woltering<sup>2</sup> · Willy N. J. M. Colier<sup>3</sup> · Andrea B. Maier<sup>1,4</sup> · Carel G. M. Meskers<sup>1,5</sup> · Richard J. A. van Wezel<sup>2,6</sup>

Received: 23 November 2018 / Accepted: 11 February 2019 / Published online: 15 February 2019  
© The Author(s) 2019

## Abstract

**Purpose** Cerebral oxygenation as measured by near-infrared spectroscopy (NIRS) might be useful to discriminate between physiological and pathological responses after standing up in individuals with orthostatic hypotension. This study addressed the physiological sensitivity of the cerebral oxygenation responses as measured by NIRS to different types and speeds of postural changes in healthy adults and assessed the reliability of these responses.

**Methods** Cerebral oxygenated hemoglobin (O<sub>2</sub>Hb), deoxygenated hemoglobin (HHb) and tissue saturation index (TSI) were measured bilaterally on the forehead of 15 healthy individuals (12 male, age range 18–27) using NIRS. Participants performed three repeats of sit to stand, and slow and rapid supine to stand movements. Responses were defined as the difference between mean, minimum and maximum O<sub>2</sub>Hb, HHb and TSI values after standing up and baseline. Test–retest, interobserver and intersensor reliabilities were addressed using intraclass correlation coefficients (ICCs).

**Results** The minimum O<sub>2</sub>Hb response was most sensitive to postural changes and showed significant differences (−4.09 μmol/L,  $p < 0.001$ ) between standing up from sitting and supine position, but not between standing up at different speeds (−0.31 μmol/L,  $p = 0.70$ ). The minimum O<sub>2</sub>Hb response was the most reliable parameter (ICC > 0.6).

**Conclusions** In healthy individuals, NIRS-based cerebral oxygenation parameters are sensitive to postural change and discriminate between standing up from supine and sitting position with minimum O<sub>2</sub>Hb response as the most sensitive and reliable parameter. The results underpin the potential value for future clinical use of NIRS in individuals with orthostatic hypotension.

**Keywords** Cerebrovascular circulation · Sensitivity · Reliability · Physiology · Orthostatic hypotension · Cerebral autoregulation

## Abbreviations

HHb	Deoxygenated hemoglobin
ICC	Intraclass correlation coefficient
NIRS	Near-infrared spectroscopy
O <sub>2</sub> Hb	Oxygenated hemoglobin

Communicated by Guido Ferretti.

**Electronic supplementary material** The online version of this article (<https://doi.org/10.1007/s00421-019-04101-0>) contains supplementary material, which is available to authorized users.

✉ Arjen Mol  
a2.mol@vu.nl

<sup>1</sup> Department of Human Movement Sciences, @AgeAmsterdam, Amsterdam Movement Sciences, Vrije Universiteit Amsterdam, Van der Boechorstraat 9, 1081 BT Amsterdam, The Netherlands

<sup>2</sup> Department of Biophysics, Donders Institute for Brain, Cognition and Behaviour, Radboud University, Heijendaalseweg 135, 6525 AJ Nijmegen, The Netherlands

<sup>3</sup> Artinis Medical Systems BV, Elst, The Netherlands

<sup>4</sup> Department of Medicine and Aged Care, @AgeMelbourne, The Royal Melbourne Hospital, The University of Melbourne, City Campus, Level 6 North, 300 Grattan Street, Parkville, VIC 3050, Australia

<sup>5</sup> Department of Rehabilitation Medicine, Amsterdam UMC, Vrije Universiteit, Amsterdam Movement Sciences, P.O. Box 7057, 1007 MB Amsterdam, The Netherlands

<sup>6</sup> Biomedical Signals and Systems, Technical Medical Centre, University of Twente, Zuidhorst Building, P.O. Box 217, 7500 AE Enschede, The Netherlands

SD Standard deviation  
TSI Tissue saturation index

## Introduction

Adequate cerebral oxygenation is essential for physical and cognitive functioning (Agbangla et al. 2017; Lotte et al. 2018; Vasta et al. 2018; Kovarova et al. 2018). Cerebral oxygenation depends on blood pressure and cerebral perfusion (Krakow et al. 2000), which are challenged by postural changes, such as standing up from supine or sitting position (Kim et al. 2011). Changes in blood pressure and cerebral perfusion after standing up are counteracted by the baroreflex and cerebral autoregulation (Xing et al. 2017; Purkayastha et al. 2018). However, these systems do not fully prevent cerebral oxygenation drops after standing up in most individuals (van Lieshout et al. 2001), which may be the cause of symptoms of dizziness, impaired physical function and falls in patients with impaired blood pressure control after standing up, i.e., orthostatic hypotension (Mehagnoul-Schipper et al. 2000; Thomas et al. 2009; Bachus et al. 2018).

To discriminate between physiological and pathological cerebral oxygenation responses, physiological responses to various types and speeds of postural changes must be investigated. Near-infrared spectroscopy (NIRS) is a non-invasive and non-obtrusive method to measure cerebral oxygenation and was suggested to be valid by studies reporting the correlation of NIRS signals with fMRI BOLD signals and cerebral blood flow measured by transcranial Doppler (Smielewski et al. 1995; Huppert et al. 2006). Furthermore, NIRS is potentially useful to assess cerebral autoregulation (Steiner et al. 2009; Kainerstorfer et al. 2015). Previous studies investigated cerebral oxygenation responses using NIRS in healthy adults during head-up tilt (Houtman et al. 1999; Krakow et al. 2000; Kurihara et al. 2003), compared responses to standing up or sitting up in younger and older adults (Kawaguchi et al. 2001; Gatto et al. 2007; Edlow et al. 2010; Kim et al. 2011), compared responses to standing up with and without calf muscle tensing (Kawaguchi et al. 2001; van Lieshout et al. 2001), or determined reproducibility of responses in older adults (Mehagnoul-Schipper et al. 2001). These studies reported a cerebral oxygenation drop within 30 s after standing up. However, a comprehensive assessment of the dependence of NIRS-derived cerebral oxygenation responses on the type (i.e., standing up from supine versus sitting position) and speed of postural change (i.e., slow versus rapid standing up) is missing and the reliability of these responses has not been assessed.

This aim of this study was to investigate the sensitivity of the cerebral oxygenation response as measured by NIRS

to different types and speeds of postural changes in healthy adults and to assess the reliability of these responses.

## Methods

All data generated or analyzed during this study are included in the supplementary information file of the published article.

## Subjects

Fifteen healthy young (mean age 22 years, SD 2.8; 12 male) individuals were recruited via oral and written advertisement in an undergraduate university teaching setting.

Volunteers were excluded from participation when having a history of stroke, cardiovascular or cerebrovascular diseases, cardiac arrhythmias, cardiovascular-related medication use, diabetes mellitus or orthostatic hypotension. Exclusion criteria were checked prior to study participation by completing a short survey. All procedures performed in studies involving human participants were in accordance with the ethical standards of the institutional and/or national research committee and with the 1964 Helsinki Declaration and its later amendments or comparable ethical standards. The study was approved by the Ethics Committee of the Faculty of Science of the Radboud University in Nijmegen. Informed consent was obtained from all individual participants included in the study.

## Instrumentation

NIRS signals reflecting concentration changes of cerebral oxygenated hemoglobin ( $O_2Hb$ ) and deoxygenated hemoglobin (HHb) and cerebral tissue saturation index (TSI) were continuously measured bilaterally on the forehead, approximately 2.5 cm above the eyebrows, using two Portalite systems (Artinis Medical Systems B.V., Elst, The Netherlands), each consisting of three light sources and one detector. The inter-optode distance (i.e., the distance between the light sources and the light detector) of the different light sources was 30, 35 and 40 mm. The sampling frequency was set at 50 Hz.  $O_2Hb$  and HHb were computed using the modified Lambert–Beer law using Oxysoft (version 3.0, Artinis Medical Systems B.V., Elst, The Netherlands), calculating the differential pathway factor using the formula proposed by Scholkmann and Wolf (2013). TSI, defined as oxygenated hemoglobin as a percentage of total hemoglobin, was computed using spatially resolved spectroscopy (Suzuki et al. 1999).

To identify the start of postural change, a digital goniometer was attached to the participant's trunk to measure its angle relative to the horizontal. Time needed to stand

up was defined as the time from the beginning of the first deviation from baseline to the instance where the angle was stabilized.

Beat-to-beat mean arterial pressure, interbeat interval and cardiac output were measured to assess whether cerebral oxygenation responses to postural changes correspond to systemic cardiovascular responses, as these are considered to be a cause of cerebral oxygenation drops (Levine et al. 1994). Mean arterial pressure, interbeat interval and cardiac output were measured continuously using a photoplethysmograph with a cuff placed on the left middle finger (Finapres NOVA, Finapres Medical Systems BV, Enschede, The Netherlands). Peripheral oxygen saturation (SpO<sub>2</sub>) was measured to assess blood oxygenation changes during standing up. An analog reference signal containing a binary coding of time was imported in every device to enable off-line synchronization of the signals.

## Protocol

The measurements were performed in a quiet, semi-dark room with a room temperature of 21–23 °C. Three different postural changes were performed, after demonstration of the correct task execution using a short video: (1) sit to stand, defined as standing up from sitting position at a self-chosen speed; (2) slow supine to stand, defined as standing up from supine position in approximately 10 s; (3) rapid supine to stand, defined as standing up from supine position within 3 s. Subjects were stimulated to relax, instructed not to talk and asked to move as little as possible during the experiment. The three different postural changes were performed in blocks, consisting of three repetitions per block. Each repetition encompassed a 5-min resting period (supine or sitting) and a 3-min standing period (Fig. 1). The sequence of the blocks was randomized among participants to eliminate the bias due to previous postural changes. After the three blocks, the NIRS system was reapplied by a second investigator

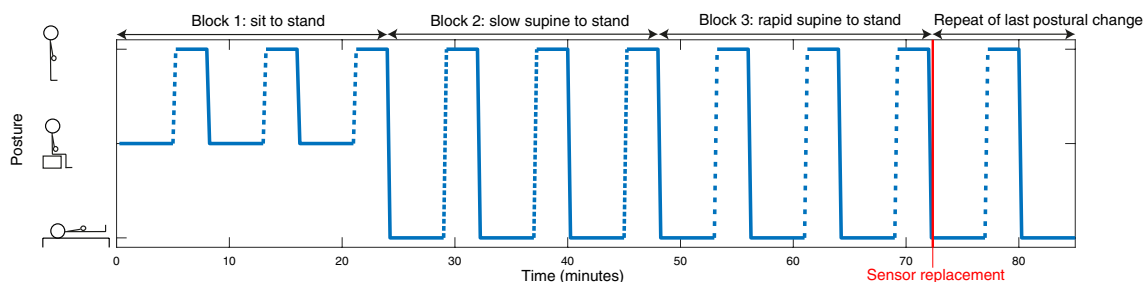
to assess the interobserver reliability. Then the last performed postural change was repeated once.

## Data analysis

NIRS, goniometer and continuous blood pressure data were synchronized and analyzed off-line using MATLAB R2017b (MathWorks, Natick, United States). NIRS and mean arterial pressure signals were filtered using a 5-s moving average filter to reduce the artifacts. Baseline values of the signals were computed as means of the 60-s period before postural change. For visualization, all signals were normalized at baseline and signals from the left and right NIRS systems were averaged. Based on previous studies reporting an early and a late oxygenation drop, the period after standing up was divided into an early and late interval, i.e., 0–30 and 30–180 s after standing up, respectively (Thomas et al. 2009; Kim et al. 2011). Parameters expressing the mean, maximum and minimum were determined for each postural change and NIRS signal for both intervals. Signal response sensitivity for postural changes was defined as the difference between these parameters and baseline.

## Statistical analysis

Statistical analyses were performed using the MATLAB R2017b statistics toolbox. Response differences between postural changes were tested using paired *t* tests. The test–retest reliability (i.e., the agreement of responses between repeats), interobserver reliability (i.e., agreement between responses before and after reapplication of the NIRS system) and intersensor reliability (i.e., agreement between responses as measured simultaneously by the left and right NIRS system) were expressed using one-way, random, single score intraclass correlation coefficients (ICCs) (McGraw and Wong 1996) and evaluated for each signal (i.e., O<sub>2</sub>Hb, HHb and TSI), response type (i.e., mean, maximum and minimum) and interval (i.e., 0–30 s and 30–180 s). ICC scores between 0–0.40, 0.40–0.59, 0.60–0.74 and



**Fig. 1** Protocol of the postural changes. The sequence of the three blocks varied among subjects due to block randomization. Each block consists of three repeats. The empty space between the dashes indicates the speed of standing up, with more space indicating higher speed

0.75–1 were regarded as poor, fair, good and excellent, respectively (Cicchetti 1994).

$p$  values below 0.05 were considered significant. Correction for multiple comparisons was performed according

to the Bonferroni method, rendering  $p$  values below 0.0009 significant.

## Results

The characteristics of the included individuals are listed in Table 1. Postural changes for sit to stand, slow supine to stand and rapid supine to stand were performed in 4.3 (SD 1.1), 14.4 (SD 3.9) and 6.0 (SD 1.5) s, respectively.

Figure 2 shows  $O_2Hb$ ,  $HHb$ , TSI and mean arterial pressure before, during and after the three types of postural change (i.e., sit to stand, slow supine to stand and rapid supine to stand), normalized at baseline and averaged over all 15 subjects. In the early interval (0–30 s),  $O_2Hb$ ,  $HHb$  and TSI showed a drop, which was most prominent in the  $O_2Hb$  signal and in the rapid supine to stand condition. In the late interval,  $O_2Hb$  and TSI showed a small decrease, while  $HHb$  showed a clear increase. None of the NIRS signals returned to baseline within the measurement period. Mean arterial pressure showed a pattern similar to  $O_2Hb$  and TSI in the early interval, but remained stable in the late interval. Figure 1 in the electronic supplementary material (ESM.1) shows the cerebral oxygenation responses for the three female participants, showing similar patterns as the responses of the entire population.

Mean  $SpO_2$  in the early interval did not differ significantly from baseline in any type of postural change.

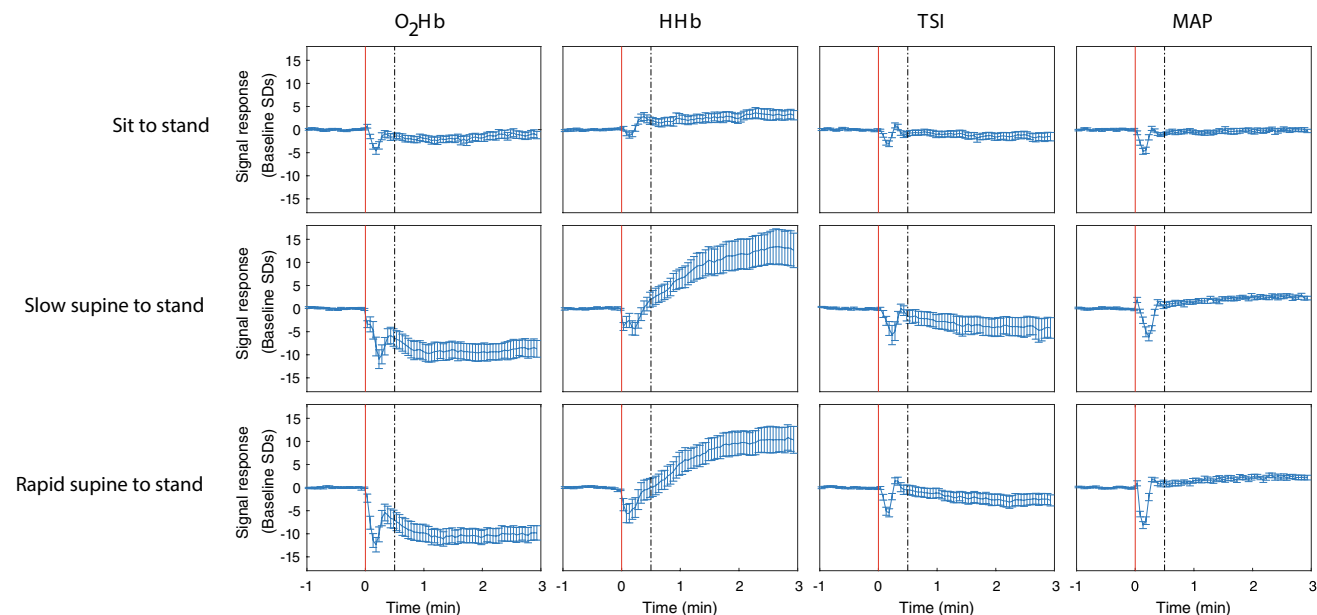
**Table 1** Characteristics of the cohort

Characteristic	All ( $n=15$ )
Age, years, mean (SD)	22 (2.8)
Male, $n$ (%)	12 (80)
Light skin color, $n$ (%)	13 (87)
Height, m, mean (SD)	1.80 (9.4)
Weight, kg, mean (SD)	71 (5.7)
Current smoking, $n$ (%)	1 (6.7)
Excessive alcohol use, $n$ (%) <sup>a</sup>	0 (0)
Resting HR, bpm, mean (SD)	75 (13)
Resting SBP, mmHg, mean (SD)	127 (7)
Resting DBP, mmHg, mean (SD)	74 (10)
Time needed for sit to stand, s, mean (SD)	4.3 (1.1)
Time needed for slow supine to stand, s, mean (SD)	14.4 (3.9)
Time needed for rapid supine to stand, s, mean (SD)	6.0 (1.5)

HR was computed as the baseline mean. Systolic blood pressure (SBP) and diastolic blood pressure (DBP) were measured using a sphygmomanometer

SD standard deviation, BMI body mass index, HR heart rate, bpm beats per minute

<sup>a</sup>Excessive alcohol use is defined as >14 units per week for females and >21 units per week for males



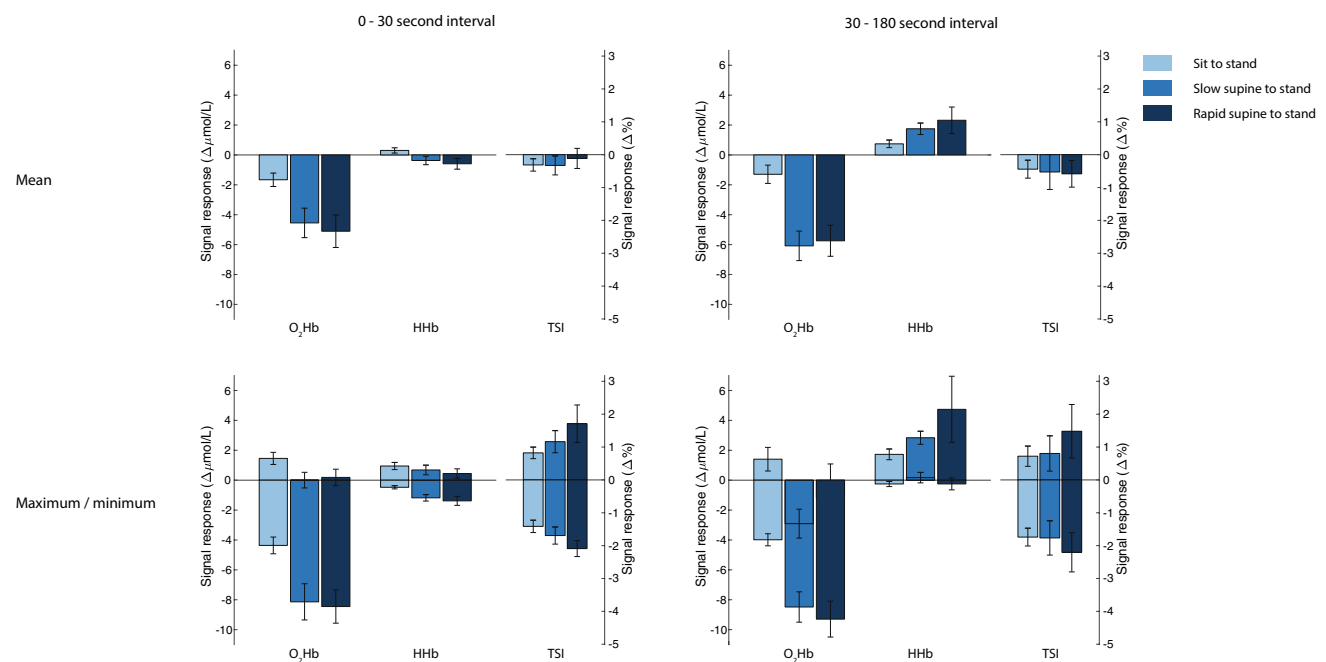
**Fig. 2**  $O_2Hb$ ,  $HHb$ , TSI and mean arterial pressure before, during and after standing up as a response to different postural changes, averaged over subjects ( $n=15$ ). All signals are unfiltered and normalized at baseline. The red vertical line indicates the onset of the pos-

tural change. The dashed line indicates the transition from the early (0–30 s) to the late (30–180 s) interval. The error bars indicate the standardized error of the mean

Interbeat interval and cardiac output showed a decrease and an increase in the early interval, respectively, for any postural change, as shown in figure ESM.2.

Figure 3 shows the  $O_2Hb$ ,  $HHb$  and  $TSI$  signal response sensitivity to three postural changes for both intervals. As shown in Table 2, the responses differed significantly between sit to stand and both slow or rapid supine to stand, but no significantly different responses between slow and rapid supine to stand were observed. After correction for multiple comparisons, only differences in  $O_2Hb$  responses remained significant, both in the early and late interval. The largest mean arterial pressure drop after standing up was 24.0 (SD 9.8), 26.4 (SD 14.6) and 29.0 (SD 7.1) mmHg for sit to stand, slow supine to stand and rapid supine to stand, respectively, being not significantly different between conditions.

Figure 4 shows the test–retest reliability, interobserver reliability and intersensor reliability for each signal, parameter and interval. Overall, the minimum  $O_2Hb$  response in the early interval resulted in the highest reliability scores, being good to excellent. None of the parameters derived from  $HHb$  and  $TSI$  had good or excellent test–retest, interobserver and intersensor reliability.



**Fig. 3** Signal response sensitivity of  $O_2Hb$ ,  $HHb$  and  $TSI$  for different types of postural changes, averaged over subjects ( $n=15$ ). The results are computed from the filtered signals. The upper panels depict the mean of the signal within the interval relative to baseline. The lower panels indicate the highest and lowest value (most positive and most

## Discussion

Cerebral oxygenation as measured by NIRS was sensitive to postural changes in healthy adults. Oxygenated hemoglobin ( $O_2Hb$ ) showed the most prominent drop after standing up, which was significantly different between standing up from supine and from sitting position, but not between slow and rapid standing up. Compared to other parameters, the minimum  $O_2Hb$  response in the early interval showed good to excellent reliability, identifying this as the preferred parameter in the assessment of cerebral oxygenation responses to postural changes.

Both oxygenated and deoxygenated hemoglobin dropped in the early phase after standing up, indicating a lower concentration of total hemoglobin, therewith reflecting a decrease of cerebral perfusion. This is in line with the early perfusion drop after standing up reported by transcranial Doppler studies (van Lieshout et al. 2001; Thomas et al. 2009). This perfusion drop indicates that cerebral autoregulation may not immediately compensate for blood pressure drops resulting from gravitational pooling after standing up, even in healthy adults (Zhang et al. 2002; Chisholm and Anpalahan 2017; Xing et al. 2017; van Wijnen et al. 2017). The perfusion drop in the context of a constant brain oxygen demand is likely to be the cause of the cerebral hemoglobin

negative bar, respectively) within the interval relative to baseline. The error bars indicate the standardized error of the mean.  $O_2Hb$  oxygenated hemoglobin,  $HHb$  deoxygenated hemoglobin,  $TSI$  tissue saturation index

**Table 2** NIRS response differences between postural changes

	Sit to stand versus slow supine to stand	<i>p</i> value	Sit to stand versus rapid supine to stand	<i>p</i> value	Slow supine to stand versus rapid supine to stand	<i>p</i> value
0–30 s interval						
O <sub>2</sub> Hb, Δμmol/L, mean (SD)						
Mean	−2.89 (3.60)	<b>0.0077</b>	−3.44 (3.64)	<b>0.0026</b>	−0.56 (2.58)	0.4169
Maximum	−1.45 (2.44)	<b>0.0368</b>	−1.27 (1.86)	<b>0.0189</b>	0.18 (1.54)	0.6551
Minimum	−3.78 (3.82)	<b>0.0018</b>	−4.09 (3.58)	<b>0.0006*</b>	−0.31 (3.04)	0.6959
HHb, Δμmol/L, mean (SD)						
Mean	−0.67 (1.06)	<b>0.0279</b>	−0.89 (1.26)	<b>0.0158</b>	−0.22 (0.99)	0.4047
Maximum	−0.27 (1.00)	0.3231	−0.50 (0.97)	0.0642	−0.24 (0.50)	0.0848
Minimum	−0.71 (0.98)	<b>0.0143</b>	−0.91 (1.24)	<b>0.0131</b>	−0.20 (1.05)	0.4689
TSI, Δ%, mean (SD)						
Mean	0.0 (1.1)	0.9580	0.2 (1.5)	0.6058	0.2 (1.4)	0.5495
Maximum	0.3 (1.2)	0.3031	0.9 (2.4)	0.1792	0.6 (2.4)	0.3941
Minimum	−0.3 (1.0)	0.3169	−0.7 (1.1)	<b>0.0309</b>	−0.4 (0.8)	0.0625
30–180 s interval						
O <sub>2</sub> Hb, Δμmol/L, mean (SD)						
Mean	−4.79 (3.78)	<b>0.0002*</b>	−4.45 (3.84)	<b>0.0005*</b>	0.34 (3.95)	0.7451
Maximum	−4.31 (3.71)	<b>0.0005*</b>	−2.57 (8.74)	0.2739	1.74 (8.59)	0.4448
Minimum	−4.50 (4.01)	<b>0.0007*</b>	−5.31 (4.44)	<b>0.0004*</b>	−0.81 (3.46)	0.3792
HHb, Δμmol/L, mean (SD)						
Mean	1.01 (1.10)	<b>0.0031</b>	1.58 (3.06)	0.0663	0.57 (2.51)	0.3941
Maximum	1.11 (1.11)	<b>0.0017</b>	3.01 (8.13)	0.1731	1.90 (7.67)	0.3537
Minimum	0.42 (1.41)	0.2653	0.00 (1.65)	0.9956	−0.42 (1.25)	0.2145
TSI, Δ%, mean (SD)						
Mean	−0.1 (2.1)	0.8743	−0.1 (1.9)	0.7806	−0.1 (1.0)	0.8259
Maximum	0.1 (1.9)	0.8672	0.8 (3.6)	0.4273	0.7 (3.5)	0.4644
Minimum	−0.0 (2.1)	0.9637	−0.5 (2.4)	0.4707	−0.4 (1.3)	0.2260

Bold values indicate significant differences before correction for multiple comparisons

NIRS responses (i.e., mean, highest value and lowest value) in two intervals, compared between postural changes. Significantly different responses were observed when comparing sit to stand with supine to stand. The responses do not differ significantly between slow and rapid supine to stand

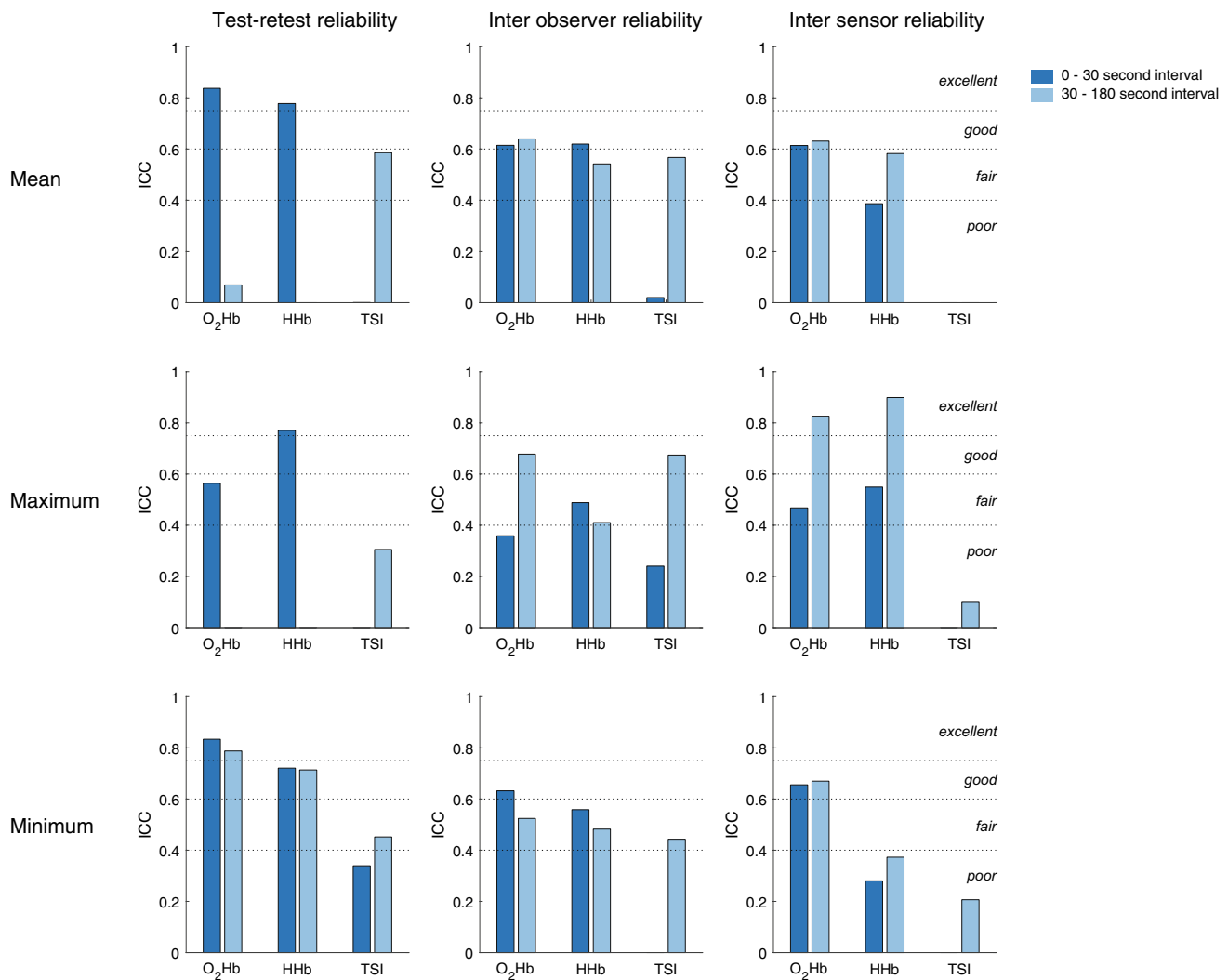
\*This association remains significant after correction for multiple comparisons

saturation decrease, as reflected by the drop in TSI. Altered lung function during standing up may have contributed to the early drop in O<sub>2</sub>Hb and TSI after standing up. However, SpO<sub>2</sub> did not show a significant drop after standing up, indicating this contribution was probably not large, if at all present. Furthermore, the decrease of interbeat interval and increase of cardiac output suggest a sufficient cardiac response to postural change, implying cardiac function does not account for the cerebral oxygenation drop.

The late, gradual drop of O<sub>2</sub>Hb and TSI to below baseline and rise of HHb to above baseline are consistent with previous studies (Krakow et al. 2000; Mehagnoul-Schipper et al. 2001; Kim et al. 2011) and are not likely to arise from gravitational pooling, as healthy adults usually recover blood pressure within 30 s after standing up (van Wijnen et al. 2017). These may be explained by a persistently decreased brain perfusion after standing up due to

persistent hydrostatic pressure differences, as reported by transcranial Doppler studies (van Lieshout et al. 2001; Kim et al. 2011). The lower brain perfusion and a constant brain oxygen demand might cause a larger part of the available hemoglobin to become deoxygenated, thereby explaining a drop of O<sub>2</sub>Hb and TSI and a rise of HHb.

The significantly different O<sub>2</sub>Hb responses between standing up from sitting and supine position measured in the present study could not be explained by corresponding differences in blood pressure drop. Instead, these O<sub>2</sub>Hb response differences might be explained by dependence of cerebral autoregulation on the type of postural change, independent of the magnitude of the blood pressure drop. The vestibular system may be involved, as standing up from supine and sitting position causes different vestibular stimuli, influencing cerebral autoregulation (Serrador et al. 2009) and therewith cerebral oxygenation.



**Fig. 4** Test–retest reliability, interobserver reliability and intersensor reliability, presented as intraclass correlation (ICC), separate for each signal, response type and interval. The ICCs are computed from the filtered signals. The dotted lines delineate ICC scores regarded

as excellent, good, fair and poor, as indicated in the right panels. An absent bar signifies an ICC of zero or lower. *O<sub>2</sub>Hb* oxygenated hemoglobin, *HHb* deoxygenated hemoglobin, *TSI* tissue saturation index

No significant differences were found between responses to rapid and slow supine to standing in the *O<sub>2</sub>Hb*, *HHb* and *TSI* signals, as would be expected from studies showing that cerebral autoregulation acts as a high-pass filter, implying that rapid blood pressure drops cannot be compensated for as adequately as slow blood pressure drops (Rickards and Tzeng 2014; Tarumi and Zhang 2018). Cerebral autoregulation may not have been tested to its maximum, as measured differences of blood pressure drops between the slow and rapid supine to stand conditions in the present population were small and not significant. Further studies in patients with impaired blood pressure control, e.g., patients with orthostatic hypotension are required.

The lower overall test–retest reliability and intersensor reliability of *TSI* responses compared to *O<sub>2</sub>Hb* and *HHb*

responses may be explained by an insufficient validity of the assumptions needed to compute *TSI*, such as homogeneity of brain tissue (Yoshitani et al. 2007; Murkin and Arango 2009). The substantial *TSI* response differences, as measured by the left and right NIRS devices, suggest different tissue properties underlying both devices, e.g., differences in skull thickness, which were reported to be considerable in a recent study (Sawosz et al. 2016). Alternatively, a relatively low sensitivity of *TSI* to postural changes may imply that *TSI* parameters are relatively sensitive to noise, leading to lower *TSI* reliability scores.

The NIRS measurements investigated in the present study are potentially influenced by changes in scalp perfusion after standing up, which is not directly regulated by cerebral autoregulation. Studies on the contribution of scalp perfusion

to cerebral oxygenation as measured by NIRS are contradictory. Cerebral oxygenation was reported to correlate significantly with jugular vein oxygenation, but not with facial vein oxygenation, suggesting signals derived from NIRS measurements primarily reflect cerebral processes (Murkin and Arango 2009). However, significant changes in TSI, as measured by NIRS, were reported after inducing scalp ischemia using a tourniquet, indicating a significant influence of scalp blood flow (Germon et al. 1994).

The subjects needed more time to stand up than instructed in both the slow and rapid supine to stand conditions. This may be attributable to underestimation of the speed of standing up by the subjects. Alternatively, it may be due to the definition of the time needed to stand up, which requires a stabilized goniometer signal. If subjects stood up sufficiently rapidly, but needed some extra time to fully stabilize, this may have prolonged the measured time needed to stand up.

### Strength and limitations

The strength of this study is that it addresses the sensitivity of cerebral oxygenation signals for different types and speeds of postural change and systematically assesses the test–retest, interobserver and intersensor reliability for various parameters. The small number of included individuals is a limitation of this study, potentially introducing sampling error and limiting study power. The majority of the included individuals were young males, potentially limiting generalizability. Furthermore, as the experiment included only one session, no conclusions can be drawn regarding the day-to-day reproducibility of the parameters, which may be important to explain the variation of cerebral oxygenation responses in healthy adults.

The results elucidate the cerebral oxygenation response to different types and speeds of postural change in healthy adults. However, they do not provide an integrative view on the cardiovascular reaction to postural change, which would contribute to the understanding of the pathophysiology of orthostatic hypotension. Future studies should address this issue, simultaneously assessing blood pressure, arterial and venous vasoreactivity, calf muscle function, sympathetic and parasympathetic function as well as cerebral oxygenation.

This study does not provide results on how to predict syncope or orthostatic symptoms, as these were not recorded in this study. However, the reported results on cerebral oxygenation changes during different types and speeds of standing up in healthy adults are necessary to determine any dependence of these responses on age in future studies and to classify future NIRS measurements in patients with orthostatic hypotension as physiological or pathological.

### Conclusion and future direction

This study demonstrates that cerebral oxygenation responses measured using NIRS are sensitive to postural change and discriminate between standing up from supine and from sitting position, but not between slow and rapid standing up in healthy adults. Furthermore, it identifies minimum O<sub>2</sub>Hb response in the early interval as a sensitive and reliable parameter, suggesting this parameter to be of potential value for future clinical use in older adults with impaired blood pressure control, e.g., orthostatic hypotension. Future research should address other cardiovascular responses to postural change such as arterial and venous vasoreactivity in an integrative approach. Furthermore, it should address the effect of aging on the cerebral oxygenation response to different types and speeds of postural change, and investigate the potential of NIRS to predict clinical outcomes such as falls in patients with orthostatic hypotension. In contrast to healthy adults, the speed of standing up might be important for the cerebral oxygenation response in this group of patients due to inadequate blood pressure regulation and cerebral autoregulation, warranting further research.

**Acknowledgements** We thank Marc van Wanrooij from the Radboud University for providing useful comments to the manuscript. This study was supported by a grant from the Applied and Engineering Science domain (TTW) of the Netherlands Organization of Scientific Research (NWO): NeuroCIMT-Barocontrol (Grant no 14901).

**Author contributions** AM, JHHW and RJAvW conceived the presented idea and designed the study. JHHW performed the data collection. AM and JHHW performed the analysis. All authors discussed the results and contributed to the final manuscript.

### Compliance with ethical standards

**Conflict of interest** Willy N.J.M. Colier is Director of Artinis Medical Systems BV, which supplies NIRS measurement devices as used in this study. The authors have no other disclosures.

**OpenAccess** This article is distributed under the terms of the Creative Commons Attribution 4.0 International License (<http://creativecommons.org/licenses/by/4.0/>), which permits unrestricted use, distribution, and reproduction in any medium, provided you give appropriate credit to the original author(s) and the source, provide a link to the Creative Commons license, and indicate if changes were made.

### References

- Agbangla NF, Audiffren M, Albinet CT (2017) Use of near-infrared spectroscopy in the investigation of brain activation during cognitive aging: a systematic review of an emerging area of research. *Ageing Res Rev* 38:52–66. <https://doi.org/10.1016/j.arr.2017.07.003>
- Bachus E, Holm H, Hamrefors V et al (2018) Monitoring of cerebral oximetry during head-up tilt test in adults with history of syncope and orthostatic intolerance. *EP Eur* 20:1535–1542. <https://doi.org/10.1093/europace/eux298>

- Chisholm P, Anpalahan M (2017) Orthostatic hypotension: pathophysiology, assessment, treatment and the paradox of supine hypertension. *Intern Med J* 47:370–379. <https://doi.org/10.1111/imj.13171>
- Cicchetti DV (1994) Guidelines, criteria, and rules of thumb for evaluating normed and standardized assessment instruments in psychology. *Psychol Assess* 6:284–290. <https://doi.org/10.1037/1040-3590.6.4.284>
- Edlow BL, Kim MN, Durduran T et al (2010) The effects of healthy aging on cerebral hemodynamic responses to posture change. *Physiol Meas* 31:477–495. <https://doi.org/10.1088/0967-3334/31/4/002>
- Gatto R, Hoffman W, Paisansathan C et al (2007) Effect of age on brain oxygenation regulation during changes in position. *J Neurosci Methods* 164:308–311. <https://doi.org/10.1016/j.jneumeth.2007.04.020>
- Germon TJ, Kane NM, Manara AR, Nelson RJ (1994) Near-infrared spectroscopy in adults: Effects of extracranial ischaemia and intracranial hypoxia on estimation of cerebral oxygenation. *Br J Anaesth* 73:503–506. <https://doi.org/10.1093/bja/73.4.503>
- Hiraoka M, Firbank M, Essenpreis M et al (1993) A Monte Carlo investigation of optical pathlength in inhomogeneous tissue and its application to near-infrared spectroscopy. *Phys Med Biol* 38:1859–1876
- Houtman S, Colier WNJM, Hopman MTE, Oeseburg B (1999) Reproducibility of the alterations in circulation and cerebral oxygenation from supine rest to head-up tilt. *Clin Physiol* 19:169–177. <https://doi.org/10.1046/j.1365-2281.1999.00159.x>
- Huppert TJ, Hoge RD, Diamond SG et al (2006) A temporal comparison of BOLD, ASL, and NIRS hemodynamic responses to motor stimuli in adult humans. *Neuroimage* 29:368–382. <https://doi.org/10.1016/j.neuroimage.2005.08.065>
- Kainerstorfer JM, Sassaroli A, Tgavalekos KT, Fantini S (2015) Cerebral autoregulation in the microvasculature measured with near-infrared spectroscopy. *J Cereb Blood Flow Metab* 35:959–966. <https://doi.org/10.1038/jcbfm.2015.5>
- Kawaguchi T, Uyama O, Konishi M et al (2001) Orthostatic Hypotension in Elderly Persons During Passive Standing: A Comparison With Young Persons. *J Gerontol* 56:273–280
- Kim Y, Bogert LWJ, Immink RV et al (2011) Effects of aging on the cerebrovascular orthostatic response. *Neurobiol Aging* 32:344–353. <https://doi.org/10.1016/j.neurobiolaging.2009.02.019>
- Kovarova L, Valerianova A, Kmentova T et al (2018) Low cerebral oxygenation is associated with cognitive impairment in chronic hemodialysis patients. *Nephron* 139:113–119. <https://doi.org/10.1159/000487092>
- Krakow K, Ries S, Daffertshofer M, Hennerici M (2000) Simultaneous assessment of brain tissue oxygenation and cerebral perfusion during orthostatic stress. *Eur Neurol* 43:39–46. <https://doi.org/10.1159/000008127>
- Kurihara K, Kikukawa A, Kobayashi A (2003) Cerebral oxygenation monitor during head-up and -down tilt using near-infrared spatially resolved spectroscopy. *Clin Physiol Funct Imaging* 23:177–181. <https://doi.org/10.1046/j.1475-097X.2003.00488.x>
- Levine BD, Giller CA, Lane LD et al (1994) Cerebral versus systemic hemodynamics during graded orthostatic stress in humans. *Circulation* 90:298–306. <https://doi.org/10.1161/01.CIR.90.1.298>
- Lotte F, Zander TO, Dehais F et al (2018) On-the-fly mental state estimation of aircraft pilots, using a functional near infrared spectroscopy based passive-BCI. *Artic Front Hum Neurosci* 12:1–14. <https://doi.org/10.3389/fnhum.2018.00187>
- McGraw KO, Wong SP (1996) Forming inferences about some intraclass correlation coefficients. *Psychol Methods* 1:30–46. <https://doi.org/10.1037/1082-989X.1.1.30>
- Mehagnoul-Schippier DJ, Vloet LCM, Colier WNJM et al (2000) Cerebral oxygenation declines in healthy elderly subjects in response to assuming the upright position. *Stroke* 31:1615–1620. <https://doi.org/10.1161/01.STR.31.7.1615>
- Mehagnoul-Schippier DJ, Colier WN, Jansen RW (2001) Reproducibility of orthostatic changes in cerebral oxygenation in healthy subjects aged 70 years or older. *Clin Physiol* 21:77–84. <https://doi.org/10.1046/j.1365-2281.2001.00290.x>
- Murkin JM, Arango M (2009) Near-infrared spectroscopy as an index of brain and tissue oxygenation. *Br J Anaesth* 103:i3–i13. <https://doi.org/10.1093/bja/aep299>
- Purkayastha S, Maffuid K, Zhu X et al (2018) The influence of the carotid baroreflex on dynamic regulation of cerebral blood flow and cerebral tissue oxygenation in humans at rest and during exercise. *Eur J Appl Physiol* 118:959–969. <https://doi.org/10.1007/s00421-018-3831-1>
- Rickards CA, Tzeng Y-C (2014) Arterial pressure and cerebral blood flow variability: friend or foe? A review. *Front Physiol* 5:1–14. <https://doi.org/10.3389/fphys.2014.00120>
- Sawosz P, Wojtkiewicz S, Kacprzak M et al (2016) Human skull translucency: post mortem studies. *Biomed Opt Express* 7:5010. <https://doi.org/10.1364/BOE.7.005010>
- Scholkmann F, Wolf M (2013) General equation for the differential pathlength factor of the frontal human head depending on wavelength and age. *J Biomed Opt* 18:105004. <https://doi.org/10.1117/1.JBO.18.10.105004>
- Serrador JM, Schlegel TT, Black FO, Wood SJ (2009) Vestibular effects on cerebral blood flow. *BMC Neurosci* 10:119. <https://doi.org/10.1186/1471-2202-10-119>
- Smielewski P, Kirkpatrick PJ, Minhas P et al (1995) Can cerebrovascular reactivity be measured with near-infrared spectroscopy? *Stroke* 26:2285–2292
- Steiner LA, Pfister D, Strebel SP et al (2009) Near-infrared spectroscopy can monitor dynamic cerebral autoregulation in adults. *Neurocrit Care* 10:122–128. <https://doi.org/10.1007/s12028-008-9140-5>
- Suzuki S, Takasaki S, Ozaki T, Kobayashi Y (1999) Tissue oxygenation monitor using NIR spatially resolved spectroscopy. *Opt Tomogr Spectrosc tissue III* 3597:582–593. <https://doi.org/10.1117/12.356862>
- Tarumi T, Zhang R (2018) Cerebral blood flow in normal aging adults: cardiovascular determinants, clinical implications, and aerobic fitness. *J Neurochem* 144:595–608. <https://doi.org/10.1111/jnc.14234>
- Thomas KN, Cotter JD, Galvin SD et al (2009) Initial orthostatic hypotension is unrelated to orthostatic tolerance in healthy young subjects. *J Appl Physiol* 107:506–517. <https://doi.org/10.1152/jappphysiol.91650.2008>
- van Lieshout JJ, Pott FC, Madsen PL et al (2001) Muscle tensing during standing: effects on cerebral tissue oxygenation and cerebral artery blood velocity. *Stroke* 32:1546–1551. <https://doi.org/10.1161/01.STR.32.7.1546>
- van Wijnen VK, Finucane C, Harms MPM et al (2017) Noninvasive beat-to-beat finger arterial pressure monitoring during orthostasis: a comprehensive review of normal and abnormal responses at different ages. *J Intern Med* 282:468–483. <https://doi.org/10.1111/joim.12636>
- Vasta R, Cutini S, Cerasa A et al (2018) Physiological aging influence on brain hemodynamic activity during task-switching: a fNIRS study. *Front Aging Neurosci* 9:1–10. <https://doi.org/10.3389/fnagi.2017.00433>
- Xing C-Y, Tarumi T, Meijers RL et al (2017) Arterial Pressure, Heart Rate, and Cerebral Hemodynamics Across the Adult Life Span. *Hypertension* 69:712–720. <https://doi.org/10.1161/HYPERTENSIONAHA.116.08986>
- Yoshitani K, Kawaguchi M, Miura N et al (2007) Effects of hemoglobin concentration, skull thickness, and the area of the cerebrospinal fluid layer on near-infrared spectroscopy measurements. *Anesthesiology* 106:458–462. <https://doi.org/10.1097/00000542-200703000-00009>
- Zhang R, Zuckerman JH, Iwasaki K et al (2002) Autonomic Neural Control of Dynamic Cerebral Autoregulation in Humans. *Circulation* 106:1814–1820. <https://doi.org/10.1161/01.CIR.0000031798.07790.FE>