



Minerva Access is the Institutional Repository of The University of Melbourne

Author/s:

Ali Abdelhamid, Y;Phillips, L;Horowitz, M;Deane, A

Title:

Survivors of intensive care with type 2 diabetes and the effect of shared care follow-up clinics: Study protocol for the SWEET-AS randomised controlled feasibility study

Date:

2016-09-23

Citation:

Ali Abdelhamid, Y., Phillips, L., Horowitz, M. & Deane, A. (2016). Survivors of intensive care with type 2 diabetes and the effect of shared care follow-up clinics: Study protocol for the SWEET-AS randomised controlled feasibility study. *Pilot and Feasibility Studies*, 2 (1), pp.62-. <https://doi.org/10.1186/s40814-016-0104-9>.

Persistent Link:

<https://hdl.handle.net/11343/255385>

License:


[CC BY](#)

STUDY PROTOCOL

Open Access



Survivors of intensive care with type 2 diabetes and the effect of shared care follow-up clinics: study protocol for the SWEET-AS randomised controlled feasibility study

Yasmine Ali Abdelhamid^{1,2*} , Liza Phillips^{3,4}, Michael Horowitz^{3,4} and Adam Deane^{1,2}

Abstract

Background: Many patients who survive the intensive care unit (ICU) experience long-term complications such as peripheral neuropathy and nephropathy which represent a major source of morbidity and affect quality of life adversely. Similar pathophysiological processes occur frequently in ambulant patients with diabetes mellitus who have never been critically ill. Some 25 % of all adult ICU patients have diabetes, and it is plausible that ICU survivors with co-existing diabetes are at heightened risk of sequelae from their critical illness.

ICU follow-up clinics are being progressively implemented based on the concept that interventions provided in these clinics will alleviate the burdens of survivorship. However, there is only limited information about their outcomes. The few existing studies have utilised the expertise of healthcare professionals primarily trained in intensive care and evaluated heterogenous cohorts. A shared care model with an intensivist- and diabetologist-led clinic for ICU survivors with type 2 diabetes represents a novel targeted approach that has not been evaluated previously. Prior to undertaking any definitive study, it is essential to establish the feasibility of this intervention.

Methods: This will be a prospective, randomised, parallel, open-label feasibility study. Eligible patients will be approached before ICU discharge and randomised to the intervention (attending a shared care follow-up clinic 1 month after hospital discharge) or standard care. At each clinic visit, patients will be assessed independently by both an intensivist and a diabetologist who will provide screening and targeted interventions. Six months after discharge, all patients will be assessed by blinded assessors for glycated haemoglobin, peripheral neuropathy, cardiovascular autonomic neuropathy, nephropathy, quality of life, frailty, employment and healthcare utilisation. The primary outcome of this study will be the recruitment and retention at 6 months of all eligible patients.

Discussion: This study will provide preliminary data about the potential effects of critical illness on chronic glucose metabolism, the prevalence of microvascular complications, and the impact on healthcare utilisation and quality of life in intensive care survivors with type 2 diabetes. If feasibility is established and point estimates are indicative of benefit, funding will be sought for a larger, multi-centre study.

Trial registration: ANZCTR ACTRN12616000206426

Keywords: Intensive care, Critical illness, Survivors, Diabetes mellitus, Follow-up studies

* Correspondence: yasmine.aliabdelhamid@adelaide.edu.au

¹Intensive Care Unit, Royal Adelaide Hospital, North Terrace, Adelaide, South Australia 5000, Australia

²Discipline of Acute Care Medicine, The University of Adelaide, North Terrace, Adelaide, South Australia 5000, Australia

Full list of author information is available at the end of the article



Background

Acute hospital mortality for patients admitted to intensive care units (ICUs) has decreased substantially in the past two decades [1]. However, longer-term outcomes for those who survive hospital discharge remain poor, with approximately 40 % of patients dying in the 5 years after hospital discharge [2, 3]. This 'legacy effect' of critical illness on the risk of death is consistent across studies from various regions and appears to persist for at least 15 years after the index admission [2–4].

In addition to being a strong predictor of death, an episode of critical illness leads to substantial morbidity, with survivors frequently experiencing long-term physical and neuropsychiatric problems including weakness, impaired physical function, depression, anxiety, and cognitive dysfunction [5]. Moreover, the morbidity of chronic illness is exacerbated by ICU admission. For example, in an important longitudinal study of 109 ICU survivors followed for 5 years, for each additional chronic illness, healthcare expenditure increased three-fold after hospital discharge [6]. Because the long-term effect of a single episode of critical illness on health is substantial, and the costs associated with care of survivors, particularly those with pre-existing chronic illnesses, are considerable, there is an urgent need for interventions that modify these outcomes in patients with chronic illnesses.

Diabetes, particularly type 2 diabetes, is a frequently co-existing illness in critically ill patients, with a reported prevalence ranging from 12 to 30 % in observational studies [7–11]. However, it is likely that the true prevalence has been under-represented in these studies due to diabetes that is either not documented or recognised [12]. While diabetes per se has been identified as a risk factor for the development of critical illness, as well as the severity of the illness [13, 14], and the presence of diabetes is associated with a greater number of other co-existing chronic illnesses, it is surprising that there does not appear to be any association between the presence of diabetes and the risk of death within the index hospital admission. Indeed, several studies have now reported that patients with diabetes have comparable, or slightly lower, ICU and hospital mortality rates when compared to patients without diabetes [13–16]. While it is plausible that ICU survivors with diabetes are more likely to experience greater long-term morbidity and mortality than survivors without diabetes, this has not been evaluated and the long-term effects of critical illness on patients with diabetes are unknown.

It is notable that many of the complications which occur in the critically ill are also well-recognised microvascular complications which are prevalent in ambulant patients with diabetes. Autonomic neuropathy, sensorimotor peripheral neuropathy and nephropathy are all common in survivors of critical illness [17–19] as well as

in patients with type 2 diabetes who have never been critically ill [20]. It would, therefore, not be surprising if these disease processes are additive, or even synergistic, so that an episode of critical illness has the potential to exacerbate any underlying complications of diabetes, but this has not previously been investigated.

Critical illness polyneuropathy affects up to half of ICU survivors [18]. Critical illness polyneuropathy is an axonal degenerative condition and, although multiple mechanisms are implicated, hyperglycaemia is strongly associated with its development [18, 21, 22], as is well established to be the case for the microvascular complications of diabetes [23, 24]. Patients with critical illness polyneuropathy experience weakness, which can be profound and associated with considerable disability. Recovery is typically slow and may occur over years; indeed in some cases, the polyneuropathy never resolves completely [25]. Similarly, acute cardiovascular autonomic neuropathy also occurs frequently during critical illness, even in those not known to have diabetes, and is strongly associated with day-28 mortality [17]. In ambulant patients with type 2 diabetes, cardiovascular autonomic neuropathy is now recognised as an important predictor of cardiovascular death and has a greater impact than 'traditional' cardiovascular risk factors such as hypertension and hyperlipidaemia [26–28]. During critical illness, patients also often have markedly delayed gastric emptying [29], and survivors frequently report sexual and bladder dysfunction [30, 31], all of which may be manifestations of underlying autonomic neuropathy similar to that which occurs in patients with diabetes [32]. However, whether autonomic neuropathy occurs frequently in ICU survivors with pre-existing type 2 diabetes, as well as the natural history and clinical implications of this condition, are unknown.

In critically ill patients who develop acute kidney injury requiring renal replacement therapy, short-term mortality is very high [19], even in those who survive hospitalisation [33]. Moreover, survivors also report reductions in physical function and mental health 3 years after ICU discharge [34, 35], long-term mortality rates are considerable (>60 %) and chronic albuminuria is present in almost half of those alive at 4 years [33]. The latter is known to be an independent risk factor for cardiovascular disease, requirement for dialysis, and death in cohorts of patients with chronic kidney disease, as well as in epidemiological studies of the general population [36, 37]. It is conceivable, therefore, that longitudinal outcomes will be worse in critically ill patients with diabetes, particularly given that albuminuria is a key feature of diabetic nephropathy.

Microvascular complications, including cardiovascular autonomic neuropathy, account for much of the morbidity and healthcare costs associated with type 2 diabetes.

However, there is compelling evidence that comprehensive interventions can reduce the incidence and progression of these complications [23, 38, 39]. Longer-term cardiovascular risk may also be reduced with attention to glucose control [20, 40]; however, tailoring of glycaemic targets to individual circumstances is an important consideration, particularly in the older population [24, 26, 41]. These observations suggest that early, and ongoing, intervention from a physician with expertise in the management of type 2 diabetes and its complications will be important in this patient cohort.

In contrast, the evidence base for interventions following ICU discharge is more limited. Because survivors of critical illness experience profound physical symptoms for prolonged periods of time after discharge, programmes of follow-up care have been proposed to alleviate the burdens of survivorship [42, 43]. There are, however, no data to support the use of ICU follow-up clinics [44, 45]. Not only are there few randomised controlled studies, but the existing studies have employed a variety of interventions and outcome measures, compromising direct comparison [44]. The largest study to date enrolled 286 ICU survivors and randomised them to a nurse-led intensive care follow-up clinic or standard care [45]. Twelve months after ICU discharge, there was no evidence of benefit for patients randomised to the follow-up programme and the programme was, accordingly, not cost effective. A more recent multi-centre study evaluated a hospital-based rehabilitation programme of increased physical and nutritional therapies, combined with provision of illness-specific information, after ICU discharge [46]. The intervention had no effect on mobility, self-reported symptoms or health-related quality of life (HRQoL) at either 3 months, or at the 12-month follow-up. The lack of effect observed in these studies may represent a true result or a type II error. Importantly, it should be recognised that these programmes, as is the case with the majority of studies in this field of research, were conducted in heterogeneous patient cohorts and the inclusion of patients with numerous and multiple chronic diseases, many of which may be outside the sphere of expertise of healthcare professionals practising in intensive care, may have contributed to the apparent lack of benefit. Furthermore, the largest study [45] included patients with only an overnight stay in ICU and it is plausible that patients with greater illness severity and longer ICU stays are most likely to benefit from a follow-up intervention. Accordingly, in the proposed study, the health service intervention will be applied to a defined group of survivors (patients with type 2 diabetes who have had a significant ICU stay) and will utilise physicians with distinct, but complementary, expertise.

Despite the limited evidence, ICU follow-up clinics have proliferated in many countries, and generally in an

ad hoc fashion, rather than in a systematic framework with rigorous evaluation of benefit [44]. However, international guidelines recommend that all ICU survivors are reviewed 2 to 3 months following hospital discharge at a follow-up clinic [47]. Given the considerable expenditure of such a health service programme, it is essential that its potential effectiveness is established and quantified, prior to implementation.

Study objectives

The objective of this study is to establish the feasibility of conducting a definitive trial to evaluate the benefits of a shared care intensivist and diabetologist-led clinic for ICU survivors with pre-existing type 2 diabetes. Feasibility will be established by quantifying:

- (i) Study processes—the rate of recruitment of study participants using the proposed inclusion and exclusion criteria over 12–18 months and the rate of retention of the participants for a 6-month period
- (ii) Resources required—an accurate estimate of time and budget requirements
- (iii) Scientific effects—preliminary data relating to the potential effects of critical illness on chronic glucose metabolism, the prevalence of complications and the impact on healthcare utilisation and quality of life in intensive care survivors with type 2 diabetes. These data are necessary for confirmation of our initial calculation of sample size for the major study.

Methods/design

This will be a prospective, randomised, parallel, open-label, single-centre, feasibility study with allocation concealment and blinded assessors. The study has been designed in accordance with the Standard Protocol Items: Recommendations for Interventional Trials (SPIRIT 2013) [48] and the Consolidated Standards for Reporting of Trials CONSORT guidelines [49] (Fig. 1, study flow diagram). The study will be undertaken at the university-affiliated tertiary care hospital - the Royal Adelaide Hospital, Adelaide, Australia.

Study participants

Participants will be recruited from those patients being discharged from the ICU at the Royal Adelaide Hospital over a 12 to 18-month period (between February 2016 and August 2017). Patients will be approached once they become eligible and liberated from mechanical ventilation. Inclusion and exclusion criteria are described in Table 1. Type 2 diabetes will be defined according to national guidelines [50, 51]. Patient consent will be obtained by one of the investigators.

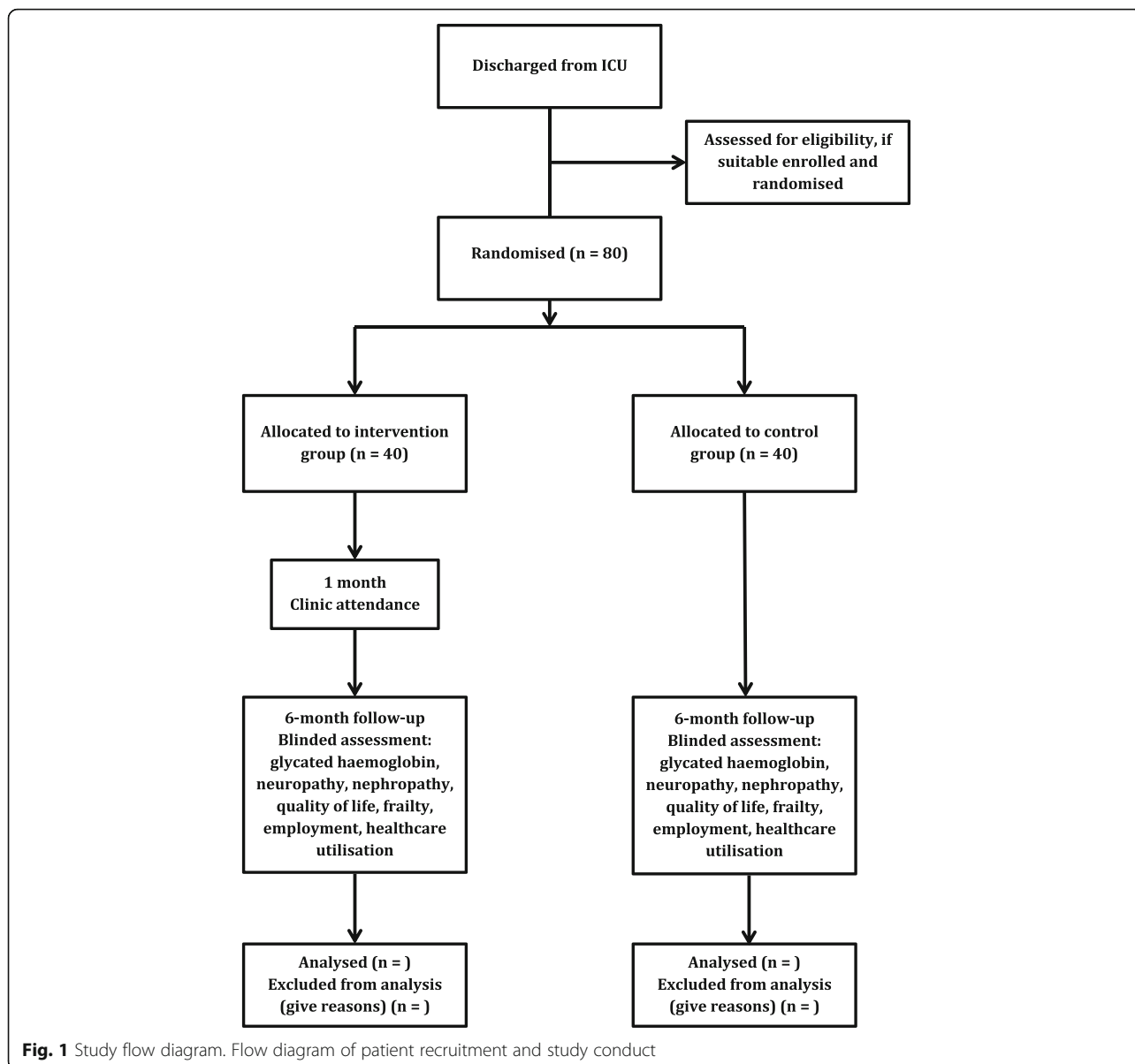


Table 1 Inclusion and exclusion criteria

Inclusion criteria	
Established pre-admission diagnosis of type 2 diabetes mellitus	
Discharged from ICU after ≥25 days of ICU care	
Exclusion criteria	
Distance from hospital to home >50 km	
Age >85 years	
Major psychiatric illness	
Anticipated to die within 6 months of ICU discharge	
Pregnancy	

Baseline data collection

Baseline data, including patient demographics, admission diagnosis, ICU length of stay, severity of illness according to acute physiology, age and chronic health evaluation (APACHE) II and sequential organ failure assessment (SOFA) scoring systems [52, 53], kidney injury during ICU admission utilising the RIFLE criteria [54] and serum urea and creatinine levels, employment status, degree of frailty before hospital admission as measured by the Canadian Study on Health and Aging Clinical Frailty Scale [55], diabetes duration and treatment, and glycosated haemoglobin level will be recorded. Information regarding consent processes will be collected.

Randomisation

All patients who provide consent for participation and fulfil the inclusion criteria will undergo simple randomisation to either the intervention or control group with a 1:1 allocation by a computerised random number generator; <https://www.randomizer.org>. The randomisation sequence will be generated, and study arm allocation will be assigned by a designated research coordinator who is not involved in the study. The randomisation sequence will be concealed from the staff enrolling and consenting participants to prevent selection bias. The randomisation sequence will be protected by an electronic password known only to the designated research coordinator.

Intervention group

Patients in the intervention group will be asked to record their blood glucose level after discharge using a provided form. Patients receiving oral hypoglycaemic agents alone will be asked to record their daily fasting blood glucose level, followed by levels twice daily in the week prior to attendance at the follow-up clinic. Patients receiving subcutaneous insulin will be asked to record their blood glucose level at least twice daily after discharge until review at the clinic. When feasible, patients will undergo continuous glucose monitoring in the week prior to clinic attendance.

All patients in the intervention group will receive a telephone call 2 weeks after hospital discharge as a reminder of the upcoming clinic appointment. During this phone call, inquiries about hypoglycaemic (blood glucose level <4 mmol/L) or hyperglycaemic (blood glucose level >13 mmol/L) blood concentrations will be made. If necessary, changes in treatment will be instituted by the study diabetologist and recorded for each patient. Patients will also undergo blood testing for glycated haemoglobin, complete blood count, electrolytes, renal and liver function, calcium profile, vitamin D level, lipid profile, vitamin B₁₂ level, folate level, iron studies, thyroid function, gonadotropin levels and testosterone level (male patients) during the week prior to the clinic attendance and prior to the 6-month assessment. Fructosamine will be measured as an additional marker of glycaemic control prior to the clinic attendance [56].

Attendance at the shared care follow-up clinic will occur 1 month after hospital discharge (± 14 days). Patients will be assessed by both an intensivist and a diabetologist at the clinic as outlined in Table 2.

Evaluation will include measurement of vital signs and basic anthropometric data; history-taking regarding diabetes and its treatment; review of blood glucose levels and continuous glucose monitoring data; adjustment of oral hypoglycaemic agents or insulin dosing as required; overall medication review; and cardiovascular risk assessment. Glycaemic targets will be tailored for each patient

Table 2 Evaluation at the ICU follow-up clinic

Diabetologist assessment	Intensivist assessment
Anthropometric measurements	Semi-structured interview to assess for long-term complications of ICU admission
History of diabetes and treatment	Discussion of ICU experience
Review of blood glucose levels and diabetes medications	Assessment of mobility
Assessment of cardiovascular risk	Screen for anxiety and depression
<ul style="list-style-type: none"> • Blood pressure check and titration of antihypertensives • Lipids • Indication for aspirin 	<ul style="list-style-type: none"> Assessment of employment status and frailty Quality of life questionnaire Review of patient healthcare utilisation diary
Diabetes complications screen	Referral to other specialists or services as required
<ul style="list-style-type: none"> • Nephropathy • Peripheral neuropathy • Cardiovascular autonomic neuropathy • Retinopathy • Macrovascular complications • Referral to ophthalmologist or podiatrist as appropriate 	

taking into consideration diabetes duration, diabetes medication regimen, the presence of cardiovascular disease, comorbidities and problems with hypoglycaemia [57]. Blood pressure, lipid profile and requirement for aspirin will be assessed and treatment instituted based upon published guidelines for patients with diabetes [58]. Patients will also undergo evaluation for complications of diabetes including nephropathy (serum urea and creatinine, spot and, if required 24-h, urine albumin) [59]; distal peripheral sensorimotor neuropathy [60]; cardiovascular autonomic neuropathy using validated cardiovascular autonomic reflex tests [61, 62] performed by ANX 3.0 Autonomic Nervous System monitoring technology (The ANSAR Group, Philadelphia, USA) and macrovascular complications (ischaemic stroke, myocardial ischaemia, peripheral vascular disease) when appropriate.

Patients and, if necessary, their carers will be interviewed and systematically asked about any problems which have developed since ICU admission including pain, airway obstruction, symptoms of autonomic neuropathy, sexual dysfunction, concerns about cosmesis and any impairments of vision, hearing, taste, swallowing, appetite, cognition or communication as recommended in international clinical guidelines [47]. Such systematic interviewing has been used previously in the ICU follow-up clinic setting [6]. Patients will be screened for mobility limitations using the Modified Rivermead Mobility Index [63], and patients of concern will be referred

to the physiotherapy department of the hospital. The ICU experience will be discussed, and patients will be screened for psychological distress using the Hospital Anxiety and Depression Scale (HADS) [64]. Patients with a high HADS score will be referred to the hospital's psychology clinic if eligible, or otherwise to their general practitioner for formation of a Medicare-funded Mental Health Treatment Plan. Both the Modified Rivermead Mobility Index and the HADS have been previously used in studies of ICU survivors [45, 46].

Following the above assessments and discussion between the intensivist and diabetologist, patients may require referral to additional healthcare professionals, including diabetes nurse educators, podiatrists, ophthalmologists, dietitians and other medical or surgical specialists. All referrals will follow standard hospital pathways. If deemed required, an additional clinic visit will be offered to patients in the intervention group prior to the assessment at 6 months. A written summary of the outcomes from the clinic visit/s will be provided to each patient's general practitioner.

Control group

Patients in the control group will have usual care in accordance with standard clinical practice, so that follow-up after ICU will be at the discretion of the primary inpatient hospital team and the patient's general practitioner.

Patients will undergo blood testing for glycosylated haemoglobin, complete blood count, electrolytes, renal and liver function, calcium profile, vitamin D level, lipid profile, vitamin B₁₂ level, folate level, iron studies, thyroid function, gonadotropin levels and testosterone level (male patients) during the week prior to the 6-month assessment.

Outcome measures

All patients in the intervention and control groups will be contacted by mail and telephone and invited back at 6 months after hospital discharge for assessment. Patients will be assessed by two blinded assessors (an intensivist and a diabetologist) who were not present at the follow-up clinic. Before undergoing this assessment, patients in the intervention group will be instructed not to refer to their prior attendance at the follow-up clinic so that the assessors remain blinded.

Primary outcome

The primary outcomes of this study are the recruitment rate over the 12 to 18-month recruitment period of the study and the rate of retention of enrolled patients for six months. The number of eligible patients during the recruitment period will be recorded, along with reasons for refusal of consent. Success of the feasibility study will be determined if $\geq 50\%$ of all eligible patients are recruited

and complete six-month data is obtained in $\geq 80\%$ of these patients.

Secondary outcomes

A number of secondary outcomes will be collected for descriptive purposes. Anthropometric data based on Australian longitudinal studies of ambulant patients with type 2 diabetes will be collected [65]. Glycosylated haemoglobin will be quantified as a marker of glycaemic control using high-performance liquid chromatography [56]. The capacity of patients using insulin or sulphonylureas to detect hypoglycaemia and symptoms of hypoglycaemia will be assessed using a validated questionnaire (the Clarke score) [66]. Patients will be assessed for the presence of distal symmetrical peripheral neuropathy with the Michigan Neuropathy Screening Instrument, a simple non-invasive and valid measure comparable to the 'gold standard' of an examination performed by a neurologist combined with electrophysiology examinations [60]. Testing for cardiovascular autonomic neuropathy will be performed using the ANX 3.0 Autonomic Nervous System monitoring technology (The ANSAR Group, Philadelphia, USA) according to the latest consensus guidelines for the diagnosis of autonomic dysfunction and patients categorised as having autonomic dysfunction if two or more tests are outside the age-adjusted reference range [61, 62]. The sympathetic response will be evaluated following the Valsalva manoeuvre for those unable to perform orthostatic provocation [61]. Patients will be screened for nephropathy with serum urea and creatinine and spot urine testing. If two spot urine samples are suggestive of macroalbuminuria, urine will be collected for 24 h and analysed for protein [59].

HRQoL scores will be measured with the EuroQol EQ-5D-5L and the short form-36 (SF-36) survey [67, 68]. Both instruments are valid and sensitive, have been used in studies of ICU survivors, and demonstrate good completion rates by telephone or mail if necessary [3, 6, 45, 69, 70]. Rates of HRQoL questionnaire completion will be reported. HRQoL scores have been used as the primary outcome in the largest study of ICU follow-up clinics to date [45] and, if high HRQoL questionnaire completion rates are demonstrated in this feasibility study, the general health component of the SF-36 will serve as the primary outcome of a subsequent larger study.

Additional secondary outcomes related to functioning in the community and healthcare resource use will also be collected. These outcomes may also serve as secondary outcomes in a subsequent larger study. The degree of frailty will be assessed using the Canadian Study on Health and Aging Clinical Frailty Scale [55], a validated tool which has previously been used in the Australian ICU setting [71] and may predict outcomes in critically ill patients [72]. Employment status will be recorded.

Healthcare utilisation data will be collected prospectively using patient monthly diaries and corroborated with hospital inpatient and outpatient clinical records and self-reports at scheduled study visits. This validated approach provides patient-specific and activity-based resource-use data after hospital discharge [6, 73]. We will specifically collect data about hospital and ICU readmissions; inpatient and outpatient rehabilitation service utilisation; hospital emergency room and outpatient clinic visits; general practitioner and specialist visits; diagnostic tests; home care services and provision of specialised medical equipment. If required when an inpatient admission occurs, we will obtain (with the patient's consent) the medical record to confirm the dates of admission, reason for admission and types of treatment received.

The outcome measures will be taken 6 months after hospital discharge by blinded assessors. EuroQol EQ-5D-5L scores, employment status and healthcare utilisation data will also be collected during the follow-up clinic visit 1 month after hospital discharge in the intervention group. Patients failing to attend the assessment visit will be contacted by telephone and/or mail, provided with the relevant questionnaires for completion, and asked to make their diaries available to the research team. Reasons for non-attendance at the clinic and the assessment appointment will be recorded.

The resources necessary for the study will also be quantified. This will include the hours per week a research coordinator is employed to assist with screening, recruitment and data management. The cost of employing the research coordinator will be calculated. The time required for the diabetologist and intensivist to assess each patient at the follow-up clinic, as well during the 6-month outcome assessment visit, will be recorded. The cost of all blood tests requested will be quantified. The amount of any honoraria paid to participants to cover transport costs and the participants' time will also be collected.

Analysis plan

For the main SWEET-AS study, the target sample will be 206 study participants. This is based on previous local mean values for the physical component summary score of the SF-36 of 41 with standard deviation of 10 [74], setting a clinically meaningful difference of 5, and allowing for 20 % drop outs, which will provide 90 % power (α 0.05) using two-tailed testing.

Based upon data from the Royal Adelaide Hospital [7], it is anticipated that there will be 80 eligible patients over the 12-month feasibility study period. The study will, accordingly, be deemed successful if at least 40 patients are recruited (50 % of all eligible patients) and complete 6-month data is obtained for at least 32

patients (80 % retention rate). If participant recruitment is significantly less than this, the study can be extended for a further 6–12 months.

Baseline comparison of patient demographics, severity of illness scores and ICU length of stay will be presented. Other scientific outcomes measured at 6 months after ICU discharge (glycated haemoglobin, HRQoL scores, Michigan neuropathy score, Clarke hypoglycaemia score, presence of cardiovascular autonomic neuropathy and nephropathy) will be reported for the entire cohort as a whole, allowing the participant data to be included in the main larger study. Reasons for missing data will be reported. Healthcare utilisation data will be reported descriptively, including the number of hospital and ICU readmissions, emergency room visits, general practitioner and specialist visits, and attendances at inpatient or outpatient rehabilitation services.

Discussion

With regard to both methodological and mechanistic perspectives, this study has a number of strengths. Methodological strengths include the use of consecutive enrolment, patient randomisation and blinded outcome assessment. The major mechanistic strength is that this is the first study to enrol a subgroup of ICU survivors with a defined chronic illness and incorporate focused multidisciplinary care. Furthermore, this subgroup of patients with type 2 diabetes and a significant ICU length of stay is an at-risk group likely to benefit from such a follow-up intervention. The patients will also attend the follow-up clinic earlier than was the case in the previous largest trial of ICU follow-up [45] which may prove beneficial.

Dependent on the outcome of this feasibility study, the follow-up clinic will either be continued with the view to expansion and undertaking a definitive study, or the patients will return to the care of their general practitioners and/or diabetologists.

Conclusions

Intensive care treatment saves lives, but the burden of survivorship is substantial and survivors with type 2 diabetes may well face greater challenges than those without co-existing chronic illness. ICU follow-up clinics are increasingly being introduced in an effort to improve outcomes, but the evidence to support their use is limited. The proposed intervention represents a novel approach to ICU follow-up clinics, and this study will determine the feasibility of such an approach, with an ultimate goal of identifying an evidence-based targeted intervention to improve outcomes in patients with type 2 diabetes following ICU discharge.

Abbreviations

APACHE: Acute physiology, age and chronic health evaluation; CONSORT: Consolidated Standards for Reporting of Trials; HADS: Hospital Anxiety and Depression Scale; HRQoL: Health-related quality of life; ICU: Intensive care unit; RIFLE: Risk, injury, failure, loss, end-stage kidney disease; SF-36: Short-form 36 health survey; SOFA: Sequential organ failure assessment; SPIRIT: Standard protocol items: recommendations for interventional trials

Acknowledgements

Ms. Kylie Lange (Biostatistician, Centre of Research Excellence in Translating Nutritional Science to Good Health, Discipline of Medicine, University of Adelaide) reviewed the manuscript and provided statistical advice.

Funding

This study is funded by an Intensive Care Foundation research grant. Dr. Ali Abdelhamid is a recipient of a Royal Adelaide Hospital Research Committee AR Clarkson Scholarship. Dr. Phillips is supported by a Royal Adelaide Hospital Research Committee Early Career Fellowship. Dr. Deane is supported by a National Health and Medical Research Council Early Career Fellowship.

Availability of data and materials

Not applicable.

Authors' contributions

All authors contributed to the study design and critically reviewed the manuscript for important scientific content. YA and AD drafted the manuscript. All authors reviewed the final manuscript and agree to be accountable for the accuracy and integrity of the work.

Authors' information

Nil additional.

Competing interests

The authors declare that there are no non-financial competing interests. Dr. Phillips has received honoraria or research support from GlaxoSmithKline, Merck Sharp and Dohme, Novartis and Novo Nordisk. Prof Horowitz has participated in advisory boards and/or symposia for Novo/Nordisk, Sanofi-aventis, Novartis, Eli-Lily, Boehringer Ingelheim, AstraZeneca, Satogen and Meyer Nutraceuticals. Dr. Deane has participated in advisory boards for Medtronic and Lyric Pharmaceutical.

Consent for publication

Not applicable.

Ethics approval and consent to participate

This study will be conducted according to the principles established in the National Health and Medical Research Council National Statement on Ethical Conduct in Human Research and has been approved by the Royal Adelaide Hospital Research Ethics Committee (HREC/15/RAH/347). Informed consent will be sought from all participants. The trial has been registered on the Australian and New Zealand Clinical Trials Registry (ACTRN12616000206426). Any adverse events associated with the trial will be reported to the Royal Adelaide Hospital Research Ethics Committee. All data obtained during the study will be coded, de-identified and stored in the secure area of the Royal Adelaide Hospital ICU Research Department. Only the investigators and staff of the Department will have access to the records.

Dissemination

The results of this study will be submitted for publication to peer-reviewed journals and presented at national/international ICU conferences.

Author details

¹Intensive Care Unit, Royal Adelaide Hospital, North Terrace, Adelaide, South Australia 5000, Australia. ²Discipline of Acute Care Medicine, The University of Adelaide, North Terrace, Adelaide, South Australia 5000, Australia. ³Endocrine and Metabolic Unit, Royal Adelaide Hospital, North Terrace, Adelaide, South Australia 5000, Australia. ⁴Discipline of Medicine, The University of Adelaide, North Terrace, Adelaide, South Australia 5000, Australia.

Received: 19 February 2016 Accepted: 1 October 2016

Published online: 13 October 2016

References

- Zimmerman JE, Kramer AA, Knauer WA. Changes in hospital mortality for United States intensive care unit admissions from 1988 to 2012. *Crit Care*. 2013;17:R81.
- Williams TA, Dobb GJ, Finn JC, Knuiman MW, Geelhoed E, Lee KY, et al. Determinants of long-term survival after intensive care. *Crit Care Med*. 2008;36(5):1523–30.
- Cuthbertson BH, Roughton S, Jenkinson D, MacLennan G, Vale L. Quality of life in the five years after intensive care: a cohort study. *Crit Care*. 2010;14(1):R6.
- Niskanen M, Kari A, Halonen P. Five-year survival after intensive care—comparison of 12,180 patients with the general population. *Finnish ICU Study Group. Crit Care Med*. 1996;24(12):1962–7.
- Desai SV, Law TJ, Needham DM. Long-term complications of critical care. *Crit Care Med*. 2011;39(2):371–9.
- Herridge MS, Tansey CM, Matte A, Tomlinson G, Diaz-Granados N, Cooper A, et al. Functional disability 5 years after acute respiratory distress syndrome. *N Engl J Med*. 2011;364(14):1293–304.
- Plummer MP, Bellomo R, Cousins CE, Annink CE, Sundararajan K, Reddi BA, et al. Dysglycaemia in the critically ill and the interaction of chronic and acute glycaemia with mortality. *Intensive Care Med*. 2014;40(7):973–80.
- Hermanides J, Bosman RJ, Vriesendorp TM, Dotsch R, Rosendaal FR, Zandstra DF, et al. Hypoglycemia is associated with intensive care unit mortality. *Crit Care Med*. 2010;38(6):1430–4.
- Falciglia M, Freyberg RW, Almenoff PL, D'Alessio DA, Render ML. Hyperglycemia-related mortality in critically ill patients varies with admission diagnosis. *Crit Care Med*. 2009;37(12):3001–9.
- Krinsley JS, Egi M, Kiss A, Devendra AN, Schuetz P, Maurer PM, et al. Diabetic status and the relation of the three domains of glycemic control to mortality in critically ill patients: an international multicenter cohort study. *Crit Care*. 2013;17(2):R37.
- Krinsley JS, Schultz MJ, Spronk PE, Harmsen RE, van Braam Houckgeest F, van der Sluijs JP, et al. Mild hypoglycemia is independently associated with increased mortality in the critically ill. *Crit Care*. 2011;15(4):R173.
- Kar P, Jones KL, Horowitz M, Deane AM. Management of critically ill patients with type 2 diabetes: the need for personalised therapy. *World J Diabetes*. 2015;6(5):693–706.
- Stegenga ME, Vincent JL, Vail GM, Xie J, Haney DJ, Williams MD, et al. Diabetes does not alter mortality or hemostatic and inflammatory responses in patients with severe sepsis. *Crit Care Med*. 2010;38(2):539–45.
- Graham BB, Keniston A, Gajic O, Trillo Alvarez CA, Medvedev S, Douglas IS. Diabetes mellitus does not adversely affect outcomes from a critical illness. *Crit Care Med*. 2010;38(1):16–24.
- Egi M, Bellomo R, Stachowski E, French CJ, Hart GK, Hegarty C, et al. Blood glucose concentration and outcome of critical illness: the impact of diabetes. *Crit Care Med*. 2008;36(8):2249–55.
- Vincent JL, Preiser JC, Sprung CL, Moreno R, Sakr Y. Insulin-treated diabetes is not associated with increased mortality in critically ill patients. *Crit Care*. 2010;14(1):R12.
- Schmidt H, Hoyer D, Hennen R, Heinroth K, Rauchhaus M, Prondzinsky R, et al. Autonomic dysfunction predicts both 1- and 2-month mortality in middle-aged patients with multiple organ dysfunction syndrome. *Crit Care Med*. 2008;36(3):967–70.
- Kress JP, Hall JB. ICU-acquired weakness and recovery from critical illness. *N Engl J Med*. 2014;370(17):1626–35.
- Uchino S, Kellum JA, Bellomo R, Doig GS, Morimatsu H, Morgera S, et al. Acute renal failure in critically ill patients: a multinational, multicenter study. *JAMA*. 2005;294(7):813–8.
- Holman RR, Paul SK, Bethel MA, Matthews DR, Neil HA. 10-year follow-up of intensive glucose control in type 2 diabetes. *N Engl J Med*. 2008;359(15):1577–89.
- Zink W, Kollmar R, Schwab S. Critical illness polyneuropathy and myopathy in the intensive care unit. *Nat Rev Neurol*. 2009;5(7):372–9.
- Van den Berghe G, Wilmer A, Hermans G, Meersseman W, Wouters PJ, Milants I, et al. Intensive insulin therapy in the medical ICU. *N Engl J Med*. 2006;354(5):449–61.

23. Stratton IM, Adler AI, Neil HA, Matthews DR, Manley SE, Cull CA, et al. Association of glycaemia with macrovascular and microvascular complications of type 2 diabetes (UKPDS 35): prospective observational study. *BMJ*. 2000;321(7258):405–12.
24. Group AC, Patel A, MacMahon S, Chalmers J, Neal B, Billot L, et al. Intensive blood glucose control and vascular outcomes in patients with type 2 diabetes. *N Engl J Med*. 2008;358(24):2560–72.
25. Koch S, Wollersheim T, Bierbrauer J, Haas K, Morgeli R, Deja M, et al. Long-term recovery in critical illness myopathy is complete, contrary to polyneuropathy. *Muscle Nerve*. 2014;50(3):431–6.
26. Gerstein HC, Miller ME, Byington RP, Goff Jr DC, Bigger JT, Buse JB, et al. Effects of intensive glucose lowering in type 2 diabetes. *N Engl J Med*. 2008;358(24):2545–59.
27. Kuehl M, Stevens MJ. Cardiovascular autonomic neuropathies as complications of diabetes mellitus. *Nat Rev Endocrinol*. 2012;8(7):405–16.
28. Pop-Busui R, Evans GW, Gerstein HC, Fonseca V, Fleg JL, Hoogwerf BJ, et al. Effects of cardiac autonomic dysfunction on mortality risk in the Action to Control Cardiovascular Risk in Diabetes (ACCORD) trial. *Diabetes Care*. 2010;33(7):1578–84.
29. Kar P, Jones KL, Horowitz M, Chapman MJ, Deane AM. Measurement of gastric emptying in the critically ill. *Clin Nutr*. 2015;34(4):557–64.
30. Griffiths J, Gager M, Alder N, Fawcett D, Waldmann C, Quinlan J. A self-report-based study of the incidence and associations of sexual dysfunction in survivors of intensive care treatment. *Intensive Care Med*. 2006;32(3):445–51.
31. Reitz A. Lower urinary tract dysfunction in critical illness polyneuropathy. *NeuroRehabilitation*. 2013;33(2):329–36.
32. Vinik AI, Maser RE, Mitchell BD, Freeman R. Diabetic autonomic neuropathy. *Diabetes Care*. 2003;26(5):1553–79.
33. Gallagher M, Cass A, Bellomo R, Finfer S, Gattas D, Lee J, et al. Long-term survival and dialysis dependency following acute kidney injury in intensive care: extended follow-up of a randomized controlled trial. *PLoS Med*. 2014;11(2):e1001601.
34. Korkeila M, Ruokonen E, Takala J. Costs of care, long-term prognosis and quality of life in patients requiring renal replacement therapy during intensive care. *Intensive Care Med*. 2000;26(12):1824–31.
35. Ahlstrom A, Tallgren M, Peltonen S, Rasanen P, Pettila V. Survival and quality of life of patients requiring acute renal replacement therapy. *Intensive Care Med*. 2005;31(9):1222–8.
36. Astor BC, Matsushita K, Gansevoort RT, van der Velde M, Woodward M, Levey AS, et al. Lower estimated glomerular filtration rate and higher albuminuria are associated with mortality and end-stage renal disease. A collaborative meta-analysis of kidney disease population cohorts. *Kidney Int*. 2011;79(12):1331–40.
37. Klausen K, Borch-Johnsen K, Feldt-Rasmussen B, Jensen G, Clausen P, Scharling H, et al. Very low levels of microalbuminuria are associated with increased risk of coronary heart disease and death independently of renal function, hypertension, and diabetes. *Circulation*. 2004;110(1):32–5.
38. Carnethon MR, Prineas RJ, Temprosa M, Zhang ZM, Uwaifo G, Molitch ME. The association among autonomic nervous system function, incident diabetes, and intervention arm in the diabetes prevention program. *Diabetes Care*. 2006;29(4):914–9.
39. Gaede P, Vedel P, Parving HH, Pedersen O. Intensified multifactorial intervention in patients with type 2 diabetes mellitus and microalbuminuria: the Steno type 2 randomised study. *Lancet*. 1999;353(9153):617–22.
40. Nathan DM, Cleary PA, Backlund JY, Genuth SM, Lachin JM, Orchard TJ, et al. Intensive diabetes treatment and cardiovascular disease in patients with type 1 diabetes. *N Engl J Med*. 2005;353(25):2643–53.
41. Duckworth W, Abraira C, Moritz T, Reda D, Emanuele N, Reaven PD, et al. Glucose control and vascular complications in veterans with type 2 diabetes. *N Engl J Med*. 2009;360(2):129–39.
42. Iwashyna TJ, Netzer G. The burdens of survivorship: an approach to thinking about long-term outcomes after critical illness. *Semin Respir Crit Care Med*. 2012;33(4):327–38.
43. Modrykamien AM. The ICU, follow-up clinic: a new paradigm for intensivists. *Respir Care*. 2012;57(5):764–72.
44. Jensen JF, Thomsen T, Overgaard D, Bestle MH, Christensen D, Egerod I. Impact of follow-up consultations for ICU survivors on post-ICU syndrome: a systematic review and meta-analysis. *Intensive Care Med*. 2015;41(5):763–75.
45. Cuthbertson BH, Rattray J, Campbell MK, Gager M, Roughton S, Smith A, et al. The PRaCTiCaL study of nurse led, intensive care follow-up programmes for improving long term outcomes from critical illness: a pragmatic randomised controlled trial. *BMJ*. 2009;339:b3723.
46. Walsh TS, Salisbury LG, Merriweather JL, Boyd JA, Griffith DM, Huby G, et al. Increased hospital-based physical rehabilitation and information provision after intensive care unit discharge: the RECOVER randomized clinical trial. *JAMA Intern Med*. 2015;175(6):901–10.
47. National Institute for Health and Clinical Excellence. Rehabilitation after critical illness. London: National Institute for Health and Clinical Excellence. 2009. Available from: www.nice.org.uk/cg83. Accessed 26 Nov 2015.
48. Chan AW, Tetzlaff JM, Gotzsche PC, Altman DG, Mann H, Berlin JA, et al. SPIRIT 2013 explanation and elaboration: guidance for protocols of clinical trials. *BMJ*. 2013;346:e7586.
49. Moher D, Schulz KF, Altman D. The CONSORT statement: revised recommendations for improving the quality of reports of parallel-group randomized trials. *JAMA*. 2001;285(15):1987–91.
50. Colman PG, Thomas DW, Zimmet PZ, Welborn TA, Garcia-Webb P, Moore MP. New classification and criteria for diagnosis of diabetes mellitus. Position Statement from the Australian Diabetes Society, New Zealand Society for the Study of Diabetes, Royal College of Pathologists of Australasia and Australasian Association of Clinical Biochemists. *Med J Aust*. 1999;170(8):375–8.
51. d'Emden MC, Shaw JE, Colman PG, Colagiuri S, Twigg SM, Jones GR, et al. The role of HbA1c in the diagnosis of diabetes mellitus in Australia. *Med J Aust*. 2012;197(4):220–1.
52. Vincent JL, Moreno R, Takala J, Willatts S, De Mendonca A, Bruining H, et al. The SOFA (Sepsis-related Organ Failure Assessment) score to describe organ dysfunction/failure. On behalf of the Working Group on sepsis-related problems of the European Society of Intensive Care Medicine. *Intensive Care Med*. 1996;22(7):707–10.
53. Knaus WA, Draper EA, Wagner DP, Zimmerman JE. APACHE II: a severity of disease classification system. *Crit Care Med*. 1985;13(10):818–29.
54. Bellomo R, Ronco C, Kellum JA, Mehta RL, Palevsky P. Acute renal failure—definition, outcome measures, animal models, fluid therapy and information technology needs: the Second International Consensus Conference of the Acute Dialysis Quality Initiative (ADQI) Group. *Crit Care*. 2004;8(4):R204–12.
55. Rockwood K, Song X, MacKnight C, Bergman H, Hogan DB, McDowell I, et al. A global clinical measure of fitness and frailty in elderly people. *CMAJ*. 2005;173(5):489–95.
56. Cohen RM, Holmes YR, Chenier TC, Joiner CH. Discordance between HbA1c and fructosamine: evidence for a glycosylation gap and its relation to diabetic nephropathy. *Diabetes Care*. 2003;26(1):163–7.
57. Cheung NW, Conn JJ, d'Emden MC, Gunton JE, Jenkins AJ, Ross GP, et al. Position statement of the Australian Diabetes Society: individualisation of glycated haemoglobin targets for adults with diabetes mellitus. *Med J Aust*. 2009;191(6):339–44.
58. Endocrinology Expert Group. Diabetes. In: eTG complete. Melbourne: Therapeutic Guidelines Limited. Revised 2013 Oct. <http://online.tg.org.au/complete>. Accessed 30 Nov 2015.
59. Chadban S, Howell M, Twigg S, Thomas M, Jerums G, Cass A, et al. The CARI guidelines. Assessment of renal function in type 2 diabetes. *Nephrology (Carlton)*. 2010;15 Suppl 1:S146–61.
60. Herman WH, Pop-Busui R, Braffett BH, Martin CL, Cleary PA, Albers JW, et al. Use of the Michigan Neuropathy Screening Instrument as a measure of distal symmetrical peripheral neuropathy in Type 1 diabetes: results from the Diabetes Control and Complications Trial/Epidemiology of Diabetes Interventions and Complications. *Diabet Med*. 2012;29(7):937–44.
61. Spallone V, Ziegler D, Freeman R, Bernardi L, Frontoni S, Pop-Busui R, et al. Cardiovascular autonomic neuropathy in diabetes: clinical impact, assessment, diagnosis, and management. *Diabetes Metab Res Rev*. 2011;27(7):639–53.
62. Bernardi L, Spallone V, Stevens M, Hilsted J, Frontoni S, Pop-Busui R, et al. Methods of investigation for cardiac autonomic dysfunction in human research studies. *Diabetes Metab Res Rev*. 2011;27(7):654–64.
63. Lennon S, Johnson L. The modified rivermead mobility index: validity and reliability. *Disabil Rehabil*. 2000;22(18):833–9.
64. Zigmond AS, Snaith RP. The hospital anxiety and depression scale. *Acta Psychiatr Scand*. 1983;67(6):361–70.
65. Dunstan DW, Zimmet PZ, Welborn TA, De Courten MP, Cameron AJ, Sicree RA, et al. The rising prevalence of diabetes and impaired glucose tolerance: the Australian Diabetes, Obesity and Lifestyle Study. *Diabetes Care*. 2002;25(5):829–34.

66. Clarke WL, Cox DJ, Gonder-Frederick LA, Julian D, Schlundt D, Polonsky W. Reduced awareness of hypoglycemia in adults with IDDM. A prospective study of hypoglycemic frequency and associated symptoms. *Diabetes Care*. 1995;18(4):517–22.
67. Herdman M, Gudex C, Lloyd A, Janssen M, Kind P, Parkin D, et al. Development and preliminary testing of the new five-level version of EQ-5D (EQ-5D-5L). *Qual Life Res*. 2011;20(10):1727–36.
68. Ware Jr JE, Sherbourne CD. The MOS 36-item short-form health survey (SF-36). I. Conceptual framework and item selection. *Med Care*. 1992;30(6):473–83.
69. Heyland DK, Hopman W, Coe H, Tranmer J, McColl MA. Long-term health-related quality of life in survivors of sepsis. Short Form 36: a valid and reliable measure of health-related quality of life. *Crit Care Med*. 2000;28(11):3599–605.
70. Paratz JD, Kenardy J, Mitchell G, Comans T, Coyer F, Thomas P, et al. IMPOSE (IMProving Outcomes after Sepsis)—the effect of a multidisciplinary follow-up service on health-related quality of life in patients postsepsis syndromes—a double-blinded randomised controlled trial: protocol. *BMJ Open*. 2014;4(5):e004966.
71. Fisher C, Karalapillai DK, Bailey M, Glassford NG, Bellomo R, Jones D. Predicting intensive care and hospital outcome with the Dalhousie Clinical Frailty Scale: a pilot assessment. *Anaesth Intensive Care*. 2015;43(3):361–8.
72. Bagshaw SM, Stelfox HT, McDermid RC, Rolfsen DB, Tsuyuki RT, Baig N, et al. Association between frailty and short- and long-term outcomes among critically ill patients: a multicentre prospective cohort study. *CMAJ*. 2014;186(2):E95–102.
73. Unroe M, Kahn JM, Carson SS, Govert JA, Martinu T, Sathy SJ, et al. One-year trajectories of care and resource utilization for recipients of prolonged mechanical ventilation: a cohort study. *Ann Intern Med*. 2010;153(3):167–75.
74. Reid DB, Chapple LS, O'Connor SN, Bellomo R, Buhr H, Chapman M, et al. The effect of augmenting early nutritional energy delivery on quality of life and employment status one year after ICU admission. *Anaesth Intensive Care*. 2016;44(3):406–12.

Submit your next manuscript to BioMed Central and we will help you at every step:

- We accept pre-submission inquiries
- Our selector tool helps you to find the most relevant journal
- We provide round the clock customer support
- Convenient online submission
- Thorough peer review
- Inclusion in PubMed and all major indexing services
- Maximum visibility for your research

Submit your manuscript at
www.biomedcentral.com/submit

