



Minerva Access is the Institutional Repository of The University of Melbourne

Author/s:

Hackett, ML;Teixeira-Pinto, A;Farnbach, S;Glozier, N;Skinner, T;Askew, DA;Gee, G;Cass, A;Brown, A

Title:

Getting it Right: validating a culturally specific screening tool for depression (aPHQ-9) in Aboriginal and Torres Strait Islander Australians

Date:

2019-07-01

Citation:

Hackett, M. L., Teixeira-Pinto, A., Farnbach, S., Glozier, N., Skinner, T., Askew, D. A., Gee, G., Cass, A. & Brown, A. (2019). Getting it Right: validating a culturally specific screening tool for depression (aPHQ-9) in Aboriginal and Torres Strait Islander Australians. *Medical Journal of Australia*, 211 (1), pp.24-30. <https://doi.org/10.5694/mja2.50212>.

Persistent Link:

<https://hdl.handle.net/11343/286058>

Article begins on page three of this document.

Title	Getting it Right: validating a culturally specific screening tool for depression (aPHQ-9) in Aboriginal and Torres Strait Islander Australians
--------------	--

Authors:

	Title	First name	Mid initials	Last name	Postnom (eg, PhD)	Position1	Address1	Position2	Address2	Tel	Email
1	Prof.	Maree	L	Hackett	PhD	Program Head Mental Health Division	1		2		mhackett@georgeinstitute.org.au
2	Assoc. Prof.	Armando		Teixeira-Pinto	PhD		3		4		armando.teixeira-pinto@sydney.edu.au
3	Dr.	Sara		Farnbach	BN, MPHTM, PhD	PhD Candidate/ Project Manager	1				sfarnbach@georgeinstitute.org.au
4	Prof.	Nicholas		Glozier	MBBS, MA, MRCPsych, FRANZCP, PhD	Professor	5			029515 1596	nick.glozier@sydney.edu.au
5	Prof.	Timothy		Skinner	BSc Hons, MTEM, PhD		6				ts@psy.ku.dk
6	Assoc. Prof.	Deborah	A	Askew	PhD		7		8		Deborah.askew@health.qld.gov.au
7	Dr.	Graham		Gee	PhD, Masters (Clin) Psychol		9,10,11			+61 3 9403 3300	graham.gee@mcri.edu.au
8	Prof.	Alan		Cass	MBBS, BA, FRACP, PhD	Director	12			08 8922 8597	alan.cass@menzies.edu.au
9	Prof.	Alex		Brown	B.Med, MPH, PhD, FCSANZ, FRACP (hon)	Theme Leader	13	Professor of Population Health	14		alex.brown@sahmri.com

Number of corresponding author:	1
Number of alternative corresponding author:	

Addresses:

This is the author manuscript accepted for publication and has undergone full peer review but has not been through the copyediting, typesetting, pagination and proofreading process, which may lead to differences between this version and the [Version of Record](#). Please cite this article as [doi: 10.1002/MJA2.50212](https://doi.org/10.1002/MJA2.50212)

	Institution	Postal address	City	State	Post Code	Nation
1	The George Institute for Global Health	King George V Building, 83-117 Missenden Rd	Sydney	NSW	2050	
2	University of Central Lancashire	Preston	Preston		Pr1 2he	United Kingdom
3	University of Sydney	Sydney Medical School	Sydney	NSW	2006	
4	Centre for Kidney Research, Westmead Millennium Institute for Medical Research	179 Hawkesbury Rd	Sydney	NSW	2145	
5	Sydney Medical School, University of Sydney	Brain and Mind Centre	Sydney	NSW	2050	
6	University of Copenhagen	Øster Farimagsgade 2A, 1353 København K	Copenhagen		1353	Denmark
7	Southern Queensland Centre of Excellence in Aboriginal and Torres Strait Islander Primary Health Care, Queensland Health	Metro South Head	Brisbane	QLD	4001	
8	University of Queensland	Brisbane	Brisbane	QLD	4072	
9	Murdoch Children's Research Institute	Melbourne	Melbourne	VIC	3065	
10	University of Melbourne		Melbourne	VIC		
11	Victorian Aboriginal Health Service		Melbourne	VIC		
12	Menzies School of Health Research	PO Box 41096	Darwin	NT	811	
13	South Australian Health and Medical Research Institute	North Terrace	Adelaide	SA	5000	
14	University of South Australia		Adelaide	SA	5001	

Postal address of first corresponding author (if different from the institutional address given above)	
--	--

Primary Keywords [Office use only]	Mental disorders; Indigenous health
Secondary keywords [Office use only]	Depressive disorders; Indigenous health; Psychometrics
Notes:	

Article details (press ctrl – 9 to enter details):

Article type	Research
Blurb	We have an evidence-based tool for screening for depression in Indigenous Australians
Pullquote	

Office use

<i>Ms. Number</i>	mja18.00907. R2
<i>Medical editor</i>	Wendy Morgan
<i>Medical editor email</i>	wmorgan@mja.com.au
<i>Structural editor</i>	Paul Foley
<i>Structural editor email</i>	pfoley@mja.com.au
<i>Section/Category</i>	Research
<i>Strapheading</i>	Research
<i>Substrap</i>	

Elsevier – file data:

Filename for copyediting	hac_mja18.00907_ms.docx
Accompanying graphics	hac_mja18.00907_gr1.eps; hac_mja18.00907_gr1.jpg hac_mja18.00907_gr4.eps; hac_mja18.00907_gr4.jpg hac_mja18.00907_gr6.eps; hac_mja18.00907_gr6.jpg
Stock images	None
Appendices	hac_mja2.00000-sup-0001-supinfo Title: Authors; Management committee and participants

Office use – history:

Event	Date
Original submission received	27/08/2018

Event	Date
Accept	28/02/2019

Proof sent to author	
Proof returned by author	
Published (date format xx/xx/xx)	01/07/19
Issue	1
Vol	211
DOI	10.5694/mja18.00907
Journal	The Medical Journal of Australia
Original article DOI (for response)	

Getting it Right: validating a culturally specific screening tool for depression (aPHQ-9) in Aboriginal and Torres Strait Islander Australians

Abstract

Objectives: To determine the validity, sensitivity, specificity and acceptability of the culturally adapted nine-item Patient Health Questionnaire (aPHQ-9) as a screening tool for depression in Aboriginal and Torres Strait Islander people.

Design: Prospective observational validation study, 25 March 2015 – 2 November 2016.

Setting, participants: 500 adults (18 years or older) who identified as Aboriginal or Torres Strait Islander people and attended one of ten primary health care services or service events in urban, rural and remote Australia that predominantly serve Indigenous Australians, and were able to communicate sufficiently to respond to questionnaire and interview questions.

Main outcome measures: Criterion validity of the aPHQ-9, with the criterion standard the depression module of the Mini-International Neuropsychiatric Interview (MINI) 6.0.0.

Results: 108 of 500 participants (22%; 95% CI, 18–25%) had a current episode of major depression according to the MINI criterion. The sensitivity of the aPHQ-9 algorithm for diagnosing a current major depressive episode was 54% (95% CI, 40–68%), its specificity was 91% (95% CI, 88–94%), with a positive predictive value of 64%. For screening for a current major depressive episode, the area under the receiver operator characteristic curve was 0.88 (95% CI, 0.85–0.92); with a cut-point of 10 points its sensitivity was 84% (95% CI, 74–91%) and its specificity 77% (95% CI, 71–83%). The aPHQ-9 was deemed acceptable by more than 80% of participants.

Conclusions: Indigenous Australians found the aPHQ-9 acceptable as a screening tool for depression. Applying a cut-point of 10 points, the performance characteristics of the aPHQ were good.

Summary box

The known: Screening tools for depression have not been formally validated for Aboriginal and Torres Strait Island people across multiple states and territories in Australia.

The new: The adapted nine-item Patient Health Questionnaire (aPHQ-9) is an effective screening tool for depression; a cut-point score of 10 points provides 84% sensitivity and 77% specificity. The aPHQ-9 was regarded as acceptable by more than 80% of participants.

The implications: We have an evidence-based tool for screening for depression in Indigenous Australians. We must ensure that those applying the aPHQ-9 have the skills and resources to confidently assess and identify depression, provide effective treatment, and implement effective prevention strategies.

The burden of disease for mental and substance use disorders, in terms of disability-adjusted life years (DALYs), was the third highest of all diseases in Australia in 2011.¹ Major depression, a chronic and relapsing disorder, impairs cognitive and emotional functioning, has substantial social and economic impacts, and increases the risk of premature death.² Evidence-based management of people with depression in primary care is beneficial for their health,³ but the rates of detection, diagnosis and effective intervention are inadequate.⁴ High quality primary care investigations of this problem have been undertaken in the United Kingdom and the United States,³ but detection of depression in Aboriginal and Torres Strait Islander people (Indigenous Australians) in primary care has been little investigated.

A recent systematic review of diagnostic psychiatric instruments found that none had been formally validated for Indigenous Australians.⁵ To rectify the paucity of Indigenous Australian-specific depression research, a culturally adapted depression screening tool validated in multiple Australian states and territories is needed. The nine-item Patient Health Questionnaire (PHQ-9)⁶ has been used for nearly two decades as a screening tool for depression and for assessing symptom severity in a wide range of cultural settings, but lacked face validity for use in Indigenous Australian communities.⁷ The PHQ-9 text has been re-worded in “Aboriginal English”, and the adapted instrument (aPHQ-9) was found to be internally consistent in a study with a community sample of 78 Aboriginal men (Cronbach $\alpha = 0.776$) and women ($\alpha = 0.767$) from central Australia.⁸

The objective of the Getting it Right study was to determine the validity of the aPHQ-9 as a tool for screening Indigenous people attending primary health care services for depression, comparing it with the standard tool, the MINI International Neuropsychiatric Interview (MINI) 6.0.0.⁹

While adapting the aPHQ-9 for use with people from five Aboriginal language groups, seven key features of depression in Indigenous Australian men not covered by the aPHQ-9 were identified: anger, weakened spirit, homesickness, irritability, excessive worry, rumination, and drug or alcohol use.⁸ Additional questions were developed for assessing these features; we will report our findings regarding these questions in a separate article.

Methods

Study design and participants

Getting it Right was a prospective, observational diagnostic accuracy study undertaken in ten Indigenous primary health care services in the Australian Capital Territory, New South Wales (four sites), the Northern Territory (two sites), Queensland, South Australia, and Western Australia. The protocol¹⁰ was conceived and designed in accordance with the principles of reciprocity, respect, equality, responsibility, survival and protection, and spirit and integrity.¹¹ The study was coordinated by the George Institute for Global Health in Sydney.

Participants were recruited between 25 March 2015 and 2 November 2016. People were eligible for the study if, at the time of their presentation to a participating health service or health service event, they were at least 18 years of age, identified as Indigenous Australians, were able to communicate sufficiently to respond to the questionnaire and interview questions, and gave informed consent. People with a diagnosis of psychosis or bipolar disorder were excluded. Trained staff members at each service were asked to screen all people attending the service on recruitment days and to record written or verbal informed consent for those who agreed to participate. At two services, staff members did not always recruit consecutive patients, but sometimes selected as potential candidates people they had met previously and believed were more likely to participate.

Study outcomes

We assessed the criterion validity of the aPHQ-9. The reference criterion standard was a diagnosis of depression with the MINI 6.0.0,⁹ a structured interview for the major Diagnostic and Statistical Manual of Mental Disorders (DSM-IV) Axis I psychiatric disorders; we removed the bereavement exclusion criterion for major depression, as foreshadowed for DSM-5. The MINI, which can be modularised and administered by clinicians and lay interviewers after appropriate training, is the most widely used structured psychiatric diagnostic interview instrument, having been validated in more than 100 countries. The interview and algorithm provide the dichotomous categories, “current major depressive episode” and “no current major depressive episode.”

Procedures

In the first assessment, a trained (as outlined in the protocol¹⁰), culturally competent staff member from the primary health care service interviewed each participant, using a printed or electronic questionnaire during a face-to-face interview (or, if necessary, by telephone). At the discretion of the interviewer and participant, participants either directly answered the eleven aPHQ-9 questions (numbered 1–4, 5a, 5b, 6, 7, 8a, 8b, 9; response options: not at all, several days, more than half the days, nearly every day), seven additional questions, questions about the acceptability and ease of use of the aPHQ-9, and questions on demographic details, or the questionnaire was administered by the

interviewer in English or the appropriate Aboriginal or Torres Strait Island language. All data were entered into a secure online study database.

Within seven days of the first assessment, a local, trained member of staff who had not participated in and was blind to the results of the initial assessment administered the major depressive episode/disorder (current or recurrent), generalised anxiety disorder (past 6 months), and post-traumatic stress disorder (past month) modules of the MINI in face-to-face interviews (or, if necessary, by telephone).

Each primary health care service had protocols for the follow-up and care of study participants presenting with depression, deliberate self-harm, or suicidal ideation or intent. If a participant had a psychiatric disorder, their general practitioner was encouraged to arrange for re-assessment, treatment, or formal referral according to their clinical judgement.¹⁰

Statistical methods

Sample size: All analyses were conducted in R 3.3.2 (R Project), and required sample sizes were calculated with the package *samplingbook* (<https://CRAN.R-project.org/package=samplingbook>). Assuming a prevalence of major depressive episode (as assessed with the MINI) of 10% and a true sensitivity of 0.85, a sample size of 500 participants was required to achieve a precision of 0.1 for the sensitivity 95% confidence interval (CI). Assuming a prevalence of 10% and a true specificity of 0.75, 500 participants were similarly required to achieve a precision of 0.04 for the specificity CI.

Data analysis: Categorical data were summarised as frequencies and percentages, continuous variables as means and standard deviations (SDs) or medians and interquartile ranges (IQRs); proportions were compared in χ^2 tests, means in *t* tests. We computed the area under the receiver operating characteristic (ROC) curve to estimate the discrimination of the aPHQ-9. Sensitivities and specificities using different aPHQ-9 thresholds were computed with a generalised estimation equation (GEE), using a logit link and exchangeable working covariance matrix to account for clustering of participants by centre. $P < 0.05$ was deemed statistically significant.

Primary analysis: The validity of the aPHQ-9 (compared with the MINI) was assessed with two common criteria for a major depressive episode:

- I. the algorithm scoring method, aligned with DSM-IV diagnostic criteria; major depressive episode was detected if the responses to questions 1 or 2 and five or more of questions 1-4, 5a or 5b, 6, 7, 8a or 8b, and 9 were at least “more than half the days” (for question 9: at least “several days”)^{7,12,13} and
- II. a total score of 10 points or more, similar to the cut-point for the original PHQ-9 as a screening tool.^{13,14}

The original PHQ-9 scoring method was used, except that each of the two split questions (questions 5 and 8 in the original PHQ-9) were scored once only and the higher score retained. The properties of other cut-points were explored by constructing ROC curves. Sensitivity and specificity were computed for subgroups (eg, people with a chronic disease) by logistic regression, allowing adjustment for demographic differences.

Missing data: Three participants each missed single aPHQ-9 questions (none the question about suicidal ideation or intent). We computed a partial score for these participants by summing scores for the answered questions, and multiplied it by 9/8 to derive their global scores.

Ethics approval

The study was approved by the University of Sydney Human Research Ethics Committee (HREC) (reference, 2014/361), the Aboriginal Health and Medical Research Council of NSW HREC (reference, 1044/14), the ACT Health HREC (reference, ETH.8.14.207), the Queensland Health Metro South HREC (reference, HREC/14/QPAH/503), the Central Australian HREC (reference, HREC-15-287), the Menzies School of Health Research HREC (reference, 2014-2289), the Aboriginal Health Council of South Australia Aboriginal Health Research Ethics Committee (reference, 04-15-622), and the Western Australian Aboriginal Health Ethics Committee (reference, 607). Each participating health service also approved the conduct of Getting it Right at their service.

Results

Ten of the 34 primary health care services invited to participate in Getting it Right agreed to participation. Reasons for non-participation included insufficient staff capacity, having other research interests, or failure to respond to multiple contact attempts. Initial decisions about participation were made by staff in the chief executive office, the social and emotional wellbeing team, general practitioners, research staff, or clinical managers.

Between 25 March 2015 and 2 November 2016, 913 people were screened for eligibility, of whom 533 provided informed consent; 530 participants completed the aPHQ-9, of whom 500 also completed the clinical MINI interview (Box 1). There were no differences in baseline characteristics between these participants and the 30 who did not complete the PHQ-9 and MINI (data not shown).

Most participants (485, 97%) identified as Aboriginal Australians; ten (2%) identified as Torres Strait Islanders and five (1%) as both. The mean age of participants was 43 years (SD, 15 years; range, 18–80 years), 267 were women (53%) and 300 were the main income earners in their households (60%) (Box 2). A previous diagnosis of depression was reported by 216 (45%) and anxiety by 160 participants (33%) (Box 3). Most participants (347, 69%) had been told at some point by a doctor or other health professional that they had at least one of the pre-specified chronic health conditions; 74 (15%) reported four or more pre-specified chronic conditions, while 105 participants (21%) reported a health problem that restricted activities of daily living in the two months before the study (Box 2).

The prevalence of a current major depressive episode according to the MINI criterion was 22% (95% CI, 18–25%), of generalised anxiety disorder 21% (95% CI, 18–25%), and of post-traumatic stress disorder 11% (95% CI, 8–14%). No MINI diagnosis was made for 347 participants (69%), while 27 participants (5%) met diagnostic criteria for all three conditions (Box 4). There were statistically significant associations between having a

current major depressive episode and arthritis, asthma, obstructive sleep apnoea, having an illness that restricted activities of daily living in the preceding two months, and having been previously diagnosed with depression or anxiety (Box 2, Box 3).

The internal consistency of the aPHQ-9 questions was very good (Cronbach $\alpha = 0.88$). Problems with sleeping were the most frequently reported aPHQ-9 item; 189 respondents (38%) found it hard to sleep at night or had other problems with sleeping at least “more than half the days”. Thoughts of self-harm or killing oneself (a little bit, most of the time, or all the time) were reported by 78 participants (16%), including two who felt this way all the time. The reporting of other symptoms, most or all the time, ranged from 19% to 31% (data not shown).

The sensitivity of the aPHQ-9 DSM-IV algorithm method (criterion I) for diagnosing a current major depressive episode was 54% (95% CI, 40–68%), its specificity 91% (95% CI, 88–94%), and the positive predictive value (PPV) 64%.

For screening for a current major depressive episode (criterion II), the area under the ROC curve was 0.88 (95% CI, 0.85–0.92). The sensitivity with a cut-point of 10 was 84% (95% CI, 74–91%) and the specificity 77% (95% CI, 71–83%); with a cut-point of 9, the sensitivity was 87% (95% CI, 78–93%) and the specificity 72% (95% CI, 66–77%), and with a cut-point of 11 the sensitivity was 81% (95% CI, 79–89%) and the specificity 82% (95% CI, 77–87%) (Box 5, Box 6). The estimates were nearly identical if the three incomplete aPHQ-9 questionnaires were excluded from the analysis (data not shown).

Feedback from participants about the acceptability of the aPHQ-9 was predominantly positive, but 65 respondents (13%) felt that some or all questions were too personal (Box 7).

Discussion

In a heterogeneous primary health care population of Indigenous Australian adults across six Australian states and territories, we found that the performance of the aPHQ-9 for screening for depression, with a cut-point of 10 points, was good; in primary care validation studies of the standard PHQ-9, 10 points was also considered the optimal cut-point.¹⁴ The best positive predictive value for detecting a major depressive episode (64%) was obtained when using the DSM-based diagnostic scoring algorithm, although sensitivity was low (54%), consistent with other reports on the algorithm approach.¹³

The 22% point prevalence of a major depressive episode in our primary health care-based study is similar to that reported for other Australian general practice populations¹⁵ and higher than that reported in similar studies of Indigenous primary care patients,^{16,17} suggesting our recruitment method did not cause selection bias. The generalisability of our findings is strengthened by the participation of ten heterogeneous primary health care services across Australia; the participants were not involved in the adaptation of the aPHQ-9, and regarded the aPHQ-9 as being acceptable. Two earlier validation studies of culturally adapted depression screening tools in Indigenous Australians were conducted in the same communities in which the original screening tools had been modified, which may have limited the generalisability of their results, given the cultural and linguistic

diversity of Indigenous Australian communities.^{16,17} No alternative culturally specific screening or assessment tools for assessing depression in Indigenous Australians were identified in a recent systematic review.¹⁸

We completed structured training for site staff, achieved high rates of interview completion, recruited an adequate number of participants with a MINI major depressive episode diagnosis to enable subgroup analyses, and complied with the National Health and Medical Research Council guidelines for Indigenous health research.¹¹ Ideally, our criterion standard would have been a semi-structured, culturally valid psychiatric interview, but such a diagnostic assessment is not available.⁵ However, the interviews were conducted by local, culturally aware clinicians.

Neither the Royal Australian College of General Practitioners (RACGP) national guide for preventive health assessment of Aboriginal and Torres Strait Islander people¹⁹ nor the Royal Australian and New Zealand College of Psychiatrists clinical practice guideline for mood disorders²⁰ recommends universal screening for depression of people attending primary care services, as stand-alone screening programs have little or no benefit for improving the detection and management of depression.²¹ Similar concerns were expressed when Google included a link to the original PHQ-9 for people who searched with “am I depressed?” or related questions.²²

The aPHQ-9 screening specificity of 77% (95% CI, 71–83%) and negative predictive value of 95% indicate that it reliably differentiates between people who require further assessment of their social and emotional wellbeing and people unlikely to have depression. The aPHQ-9 is a free, easy to administer, and culturally acceptable tool for initiating discussions with Indigenous people about their mood, consistent with recommendations by the RACGP national guideline and the Central Australian Rural Practitioners Association (CARPA) manual²³ to employ the aPHQ-9 for screening Indigenous people at high risk of depression when culturally competent, locally knowledgeable practitioners have the resources for providing further evaluation and guideline-based treatment.

The aPHQ-9 cannot replace careful assessment and diagnosis, nor should it be used to determine the need for treatment. Even at the highest positive predictive value in our study, one-third of people identified with the aPHQ-9 as having a major depressive episode would not have major depression according to assessment with the MINI, and, conversely, we would still miss some people with major depression. Determining the consistency (test–retest reliability) and inter-rater reliability of the aPHQ-9 are the next steps for ensuring that the aPHQ-9 provides consistent results, regardless of who administers the test.

Apart from screening and diagnosis, assessments for depression may be used in epidemiology studies, treatment monitoring, and outcome assessment. We do not yet know the responsiveness of the aPHQ-9 scores to treatment of patients. As the evidence base for screening for depression increases, we must develop culturally appropriate, cost-effective interventions for preventing, treating and managing depression in Indigenous Australians.

Acknowledgements: This investigation was supported by the National Health and Medical Research Council (NHMRC) (APP101767). During the completion of this work, Maree Hackett was supported by a National Heart Foundation Future Leader Fellowship (100034) and an NHMRC Career Development Fellowship Level 2 (APP1141328); Armando Teixeira-Pinto was partially supported by the NHMRC Program Grant BeatCKD (APP1092957); Sara Farnbach received a University of Sydney Faculty of Medicine Cross Cultural Public Health Research Award and a George Institute for Global Health John Chalmers Program Grant Scholarship; Alex Brown received a Sylvia and Charles Viertel Charitable Foundation Senior Medical Research Fellowship. The organisations that supported this work (through peer-reviewed educational research grants) had no role in study conception, data collection, analysis and interpretation, or writing of the manuscript. All authors have full access to the data and the final responsibility for the decision to submit for publication. The study management committee and the site staff are listed in the online [Supporting Information](#).

Competing interests: Deborah Askew was employed by one of the health services involved in the investigation.

Received 27 August 2018, accepted 28 February 2019.

Author details

The Getting it Right Collaborative Group*

* The members of the writing group and their affiliations are listed in the online [Supporting Information](#).

mhackett@georgeinstitute.org.au

doi: 10.5694/mja18.00907

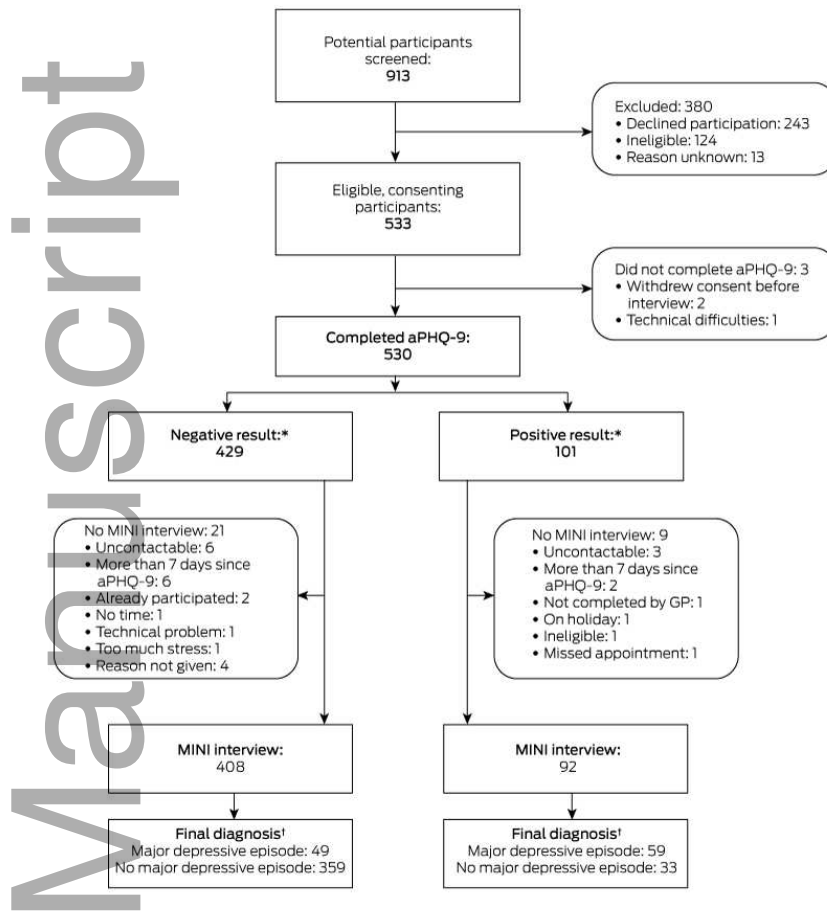
See Editorial (Balaratnasingam)

References

- 1 Australian Institute of Health and Welfare. Australian Burden of Disease Study: impact and causes of illness and death in Australia 2011 (Cat. No. BOD 4; Australian Burden of Disease Study series no. 3). Canberra: AIHW, 2016.
- 2 McLaughlin KA. The public health impact of major depression: a call for interdisciplinary prevention efforts. *Prev Sci* 2011; 12: 361-371.
- 3 Griffiths KM, Christensen H. Depression in primary health care: from evidence to policy. *Med J Aust* 2008; 188 (8 Suppl): S81-S83. <https://www.mja.com.au/journal/2008/188/8/depression-primary-health-care-evidence-policy>
- 4 Hopwood MJ, Malhi G. To screen for depression or not? *Med J Aust* 2016; 204: 329. <https://www.mja.com.au/journal/2016/204/9/screen-depression-or-not>
- 5 Black EB, Toombs MR, Kisely S. The cultural validity of diagnostic psychiatric measures for Indigenous Australians. *Aust Psychol* 2018; 53: 383-393.
- 6 Kroenke K, Spitzer R, Williams J. The PHQ-9: validity of a brief depression severity measure. *J Gen Intern Med* 2001; 16: 606-613.
- 7 Brown ADH, Mentha R, Rowley KG, et al. Depression in Aboriginal men in Central Australia: adaptation of the Patient Health Questionnaire 9. *BMC Psychiatry* 2013; 13: 271.
- 8 Brown A. Kurunpa [spirit]: exploring the psychosocial determinants of coronary heart disease among Indigenous men in Central Australia [PhD thesis]. Brisbane: School of Population Health, University of Queensland, 2009.
- 9 Sheehan DV, Lecrubier Y, Sheehan KH, et al. The Mini-International Neuropsychiatric Interview (MINI): the development and validation of a structured diagnostic psychiatric interview for DSM-IV and ICD-10. *J Clin Psychiatry* 1998; 59 (Suppl 20): 22-33.
- 10 Hackett ML, Farnbach S, Glozier N, et al. Getting it Right: study protocol to determine the diagnostic accuracy of a culturally-specific measure to screen for depression in Aboriginal and/or Torres Strait Islander people. *BMJ Open* 2016; 6: e015009.
- 11 National Health and Medical Research Council. Values and ethics: guidelines for ethical conduct in Aboriginal and Torres Strait Islander Health Research. June 2003. <https://nhmrc.gov.au/about-us/publications/values-and-ethics-guidelines-ethical-conduct-aboriginal-and-torres-strait-islander-health-research> (viewed Apr 2019).

- 12 Pfizer. Instructions for Patient Health Questionnaire (PHQ) and GAD-7 measures. <https://www.phqscreeners.com/sites/g/files/g10016261/fi/201412/instructions.pdf> (viewed Apr 2019).
- 13 Gilbody S, Richards D, Brealey S, Hewitt C. Screening for depression in medical settings with the Patient Health Questionnaire (PHQ): a diagnostic meta-analysis. *J Gen Intern Med* 2007; 22: 1596-1602.
- 14 Moriarty AS, Gilbody S, McMillan D, Manea L. Screening and case finding for major depressive disorder using the Patient Health Questionnaire (PHQ-9): a meta-analysis. *Gen Hosp Psychiatry* 2015; 37: 567-576.
- 15 Gunn JM, Gilchrist GP, Chondros P, et al. Who is identified when screening for depression is undertaken in general practice? Baseline findings from the Diagnosis, Management and Outcomes of Depression in primary care (diamond) longitudinal study. *Med J Aust* 2008; 188 (8 Suppl): S119-S125. <https://www.mja.com.au/journal/2008/188/12/who-identified-when-screening-depression-undertaken-general-practice-baseline>
- 16 Almeida OP, Flicker L, Fenner S, et al. The Kimberley assessment of depression of older Indigenous Australians: prevalence of depressive disorders, risk factors and validation of the KICA-dep scale. *PLoS One* 2014; 9: e94983.
- 17 Esler D, Johnston F, Thomas D, Davis B. The validity of a depression screening tool modified for use with Aboriginal and Torres Strait Islander people. *Aust N Z J Public Health* 2008; 32: 317-321.
- 18 Le Grande M, Ski CF, Thompson DR, et al. Social and emotional wellbeing assessment instruments for use with Indigenous Australians: a critical review. *Soc Sci Med* 2017; 187: 164-173.
- 19 National Aboriginal Community Controlled Health Organisation, Royal Australian College of General Practitioners. National guide to a preventive health assessment for Aboriginal and Torres Strait Islander people. Third edition. Melbourne: RACGP, 2018. <https://www.racgp.org.au/clinical-resources/clinical-guidelines/key-racgp-guidelines/view-all-racgp-guidelines/national-guide/acknowledgements> (viewed Apr 2019).
- 20 Malhi GS, Bassett D, Boyce P, et al. Royal Australian and New Zealand College of Psychiatrists clinical practice guidelines for mood disorders. *Aust N Z J Psychiatry* 2015; 49: 1087-1206.
- 21 Gilbody S, Sheldon T, House A. Screening and case-finding instruments for depression: a meta-analysis. *CMAJ* 2008; 178: 997-1003.
- 22 Duckworth K, Gilbody S. Should Google offer an online screening test for depression? *BMJ* 2017; 358: j4144.
- 23 Remote Primary Health Care Manuals. CARPA standard treatment manual, 7th edition. Alice Springs: Centre for Remote Health, 2017. <https://docs.remotephmanuals.com.au/review/g/manuals2017-manuals/d/20314.html?page=11> (viewed Apr 2019).

Box 1. Flow of participants through the Getting it Right study



aPHQ-9 = adapted Patient Health Questionnaire.

* Positive result (possible major depressive episode): responses to questions 1 or 2 and five or more of questions 1-4, 5a or 5b, 6, 7, 8a or 8b, and 9 were at least "more than half the days" (for question 9: at least "several days").

† Determined with the current major depressive episode module of the MINI International Neuropsychiatric Interview (MINI).

Box 2. Demographic characteristics of the 500 participants in the Getting it Right study

	Total	Major depressive episode*		P
		No	Yes	
Number of participants	500	392 (78%)	108 (22%)	
Indigenous status				0.60
Aboriginal	485 (97%)	378 (78%)	107 (22%)	
Torres Strait Islander	10 (2%)	9 (90%)	1 (10%)	
Aboriginal and Torres Strait Islander	5 (1%)	5 (100%)	0	
Language during the interview				0.08
English only	442 (89%)	339 (77%)	103 (23%)	
English and Aboriginal language	19 (4%)	17 (89%)	2 (11%)	
Aboriginal language only	33 (7%)	30 (91%)	3 (9%)	
Age (years), mean (SD)	43 (15)	44 (15)	42 (12)	0.26
Sex				0.83
Women	267 (53%)	208 (78%)	59 (22%)	
Men	233 (47%)	184 (79%)	49 (21%)	
Marital status				0.27
Never married	200 (40%)	155 (78%)	45 (22%)	
Married/de facto relationship	186 (37%)	150 (81%)	36 (19%)	
Widowed	29 (6%)	26 (90%)	3 (10%)	
Separated but not divorced	53 (11%)	39 (74%)	14 (26%)	
Divorced	29 (6%)	20 (69%)	9 (31%)	
Lived alone				0.90
No	379 (76%)	297 (78%)	82 (22%)	
Yes	118 (24%)	92 (78%)	26 (22%)	
Main income earner in household				0.65
No	196 (40%)	157 (80%)	39 (20%)	
Yes	300 (60%)	234 (78%)	66 (22%)	
Someone close died in past 2 months				0.17
No	328 (66%)	263 (80%)	65 (20%)	
Yes	170 (34%)	127 (75%)	43 (25%)	
Significant illness that restricted daily activities in the past 2 months				0.001
No	391 (79%)	319 (82%)	72 (18%)	
Yes	105 (21%)	69 (66%)	36 (34%)	
At least one chronic disease [†]				0.034

No	153 (31%)	129 (84%)	24 (16%)
Yes	347 (69%)	263 (76%)	84 (24%)
Four or more chronic diseases†			0.13
No	426 (85%)	339 (80%)	87 (20%)
Yes	74 (15%)	53 (72%)	21 (28%)

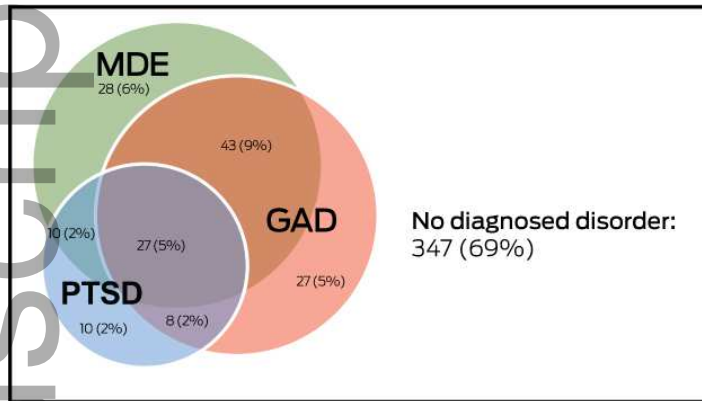
SD = standard deviation.

Missing data were not included when calculating proportions. * According to Mini-International Neuropsychiatric Interview (MINI) 6.0.0 major depressive episode module. † Heart disease, stroke, cancer, diabetes, arthritis, asthma, respiratory disease, chronic kidney disease, obstructive sleep apnoea, high blood pressure.

Box 3. Self-reported clinical history of 500 participants in the Getting it Right study

	Total	Major depressive episode*		P
		No	Yes	
Number of participants	500	392 (78%)	108 (2%)	
Depression				< 0.001
No	266 (55%)	241 (91%)	25 (9%)	
Yes	216 (45%)	136 (63%)	80 (37%)	
Anxiety				< 0.001
No	326 (67%)	291 (89%)	35 (11%)	
Yes	160 (33%)	93 (58%)	67 (42%)	
Heart disease				0.76
No	412 (84%)	323 (78%)	89 (22%)	
Yes	76 (16%)	61 (80%)	15 (20%)	
Stroke				0.13
No	473 (96%)	371 (78%)	102 (22%)	
Yes	22 (4%)	19 (86%)	3 (14%)	
Cancer				0.76
No	463 (94%)	364 (79%)	99 (21%)	
Yes	31 (6%)	25 (81%)	6 (19%)	
Diabetes				0.86
No	368 (74%)	290 (79%)	78 (21%)	
Yes	127 (26%)	98 (77%)	29 (23%)	
Arthritis				0.030
No	374 (77%)	305 (82%)	69 (18%)	
Yes	113 (23%)	80 (71%)	33 (29%)	
Asthma				0.023
No	348 (71%)	283 (81%)	65 (19%)	
Yes	145 (29%)	104 (72%)	41 (28%)	
Respiratory disease				0.18
No	442 (90%)	350 (79%)	92 (21%)	
Yes	47 (10%)	33 (70%)	14 (30%)	
Chronic kidney disease				0.53
No	447 (92%)	349 (78%)	98 (22%)	
Yes	37 (8%)	31 (84%)	6 (16%)	
Obstructive sleep apnoea				0.024
No	419 (87%)	339 (81%)	80 (19%)	

Yes	62 (13%)	41 (66%)	21 (34%)	
High blood pressure				0.86
No	333 (68%)	263 (79%)	70 (21%)	



Yes	156 (32%)	120 (77%)	36 (23%)
-----	-----------	-----------	----------

Missing data were not included when calculating proportions. * According to Mini-International Neuropsychiatric Interview (MINI) 6.0.0 major depressive episode module.

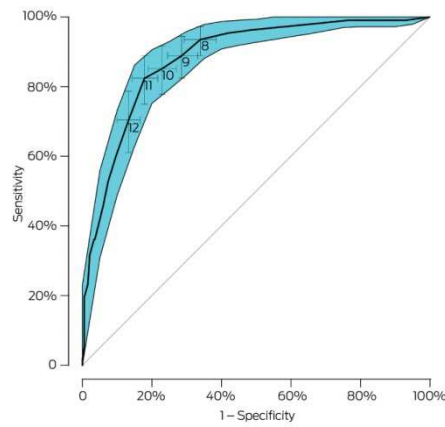
Box 4. Proportions of the 500 participants in the Getting it Right study diagnosed with at least one of major depressive episode (MDE), generalised anxiety disorder (GAD), and post-traumatic stress disorder (PTSD) with the Mini-International Neuropsychiatric Interview (MINI)

Box 5. Operational characteristics of the adapted Patient Health Questionnaire (aPHQ-9) for screening or diagnosis of a major depressive episode*

Scoring method	Sensitivity† (95% CI)	Specificity† (95% CI)	Positive predictive value	Negative predictive value	Positive likelihood ratio‡	Negative likelihood ratio§	Diagnostic odds ratio¶
Algorithm (criterion I, diagnostic)	54% (40–68%)	91% (88–94%)	64%	88%	6.3	0.5	13
Score ≥ 8	92% (84–97%)	66% (61–72%)	43%	97%	2.8	0.1	28
Score ≥ 9	87% (78–93%)	72% (66–77%)	46%	96%	3.1	0.2	20
Score ≥ 10 (criterion II, screening)	84% (74–91%)	77% (71–83%)	51%	95%	3.7	0.2	18
Score ≥ 11	81% (79–89%)	82% (77–87%)	56%	94%	4.6	0.2	22
Score ≥ 12	70% (56–81%)	87% (82–90%)	59%	91%	5.3	0.3	16

CI = confidence interval. * Prevalence of major depressive episode was 22% according to Mini-International Neuropsychiatric Interview (MINI) 6.0.0 major depressive episode module. † Estimated

using generalised estimating equations, taking into account clustering. ‡ Sensitivity/(1 – specificity): the



likelihood of a positive test result for a person with a current major depressive episode compared with that for a person without a current major depressive episode. § $(1 - \text{sensitivity})/\text{specificity}$: the likelihood of a negative test result for a person with a current major depressive episode compared with that for a person without a current major depressive episode. ¶ Estimated from the raw frequencies for true positive and negative results, and false positive and negative results.

Box 6. Receiver operating characteristic (ROC) curve for the aPHQ-9 score

aPHQ-9 = adapted Patient Health Questionnaire.

The shaded region represents the 95% confidence region for the curve. The scoring cut-points (8, 9, 10, 11, 12) are indicated with their respective cross-type 95% confidence intervals (CIs). Area under the ROC curve: 88.3% (95% CI, 84.8–91.7%).

**Box 7. Participant feedback by 500 participants in the Getting it Right study
about the acceptability of the aPHQ-9 and the seven supplementary questions**

Too many questions?	
No, the number of questions was fine	449 (90%)
It would be better if there were fewer questions/yes, there were too many	32 (6%)
Don't care/no opinion	19 (4%)
Questions were easy to understand?	
Yes, they were easy to understand	434 (87%)
I understood most of the questions	52 (10%)
No, they were too confusing	12 (2%)
Don't care/no opinion	2 (1%)
Questions were easy to answer?	
The questions were easy to answer	412 (82%)
I was able to answer most questions easily	73 (15%)
The questions were too difficult to answer	10 (2%)
Don't care/no opinion	3 (1%)
The response categories made sense?	
Yes, they were fine	446 (89%)
There is probably a better way to answer how I felt	33 (7%)
No, they were not a good way of asking	16 (3%)
Don't care/no opinion	5 (1%)
Felt comfortable answering the questions?	
Yes, I was comfortable answering all the questions	457 (91%)
I was OK answering most of the questions	33 (7%)
No, I was not comfortable answering the questions	6 (1%)
Don't care/no opinion	4 (1%)
Had time to answer the questions?	
Yes, there was plenty of time to answer the questions	493 (98%)
No, I needed more time	2 (1%)
Don't care/no opinion	5 (1%)
Were the questions too personal?	
No, I was comfortable with what was asked	428 (86%)
Some of the questions were a bit too personal	40 (8%)
Yes, the questions were all too personal and I didn't really want to answer them	25 (5%)
Don't care/no opinion	7 (1%)

aPHQ-9 = adapted Patient Health Questionnaire.