

Neurotherapeutics

Supranutritional sodium selenate supplementation delivers selenium to the central nervous system: results from a randomized controlled pilot trial in Alzheimer's disease --Manuscript Draft--

Manuscript Number:	NERX-D-18-00120R1	
Full Title:	Supranutritional sodium selenate supplementation delivers selenium to the central nervous system: results from a randomized controlled pilot trial in Alzheimer's disease	
Article Type:	Original Article	
Corresponding Author:	Barbara R Cardoso, Ph.D Deakin University Faculty of Health Melbourne, Victoria AUSTRALIA	
Corresponding Author Secondary Information:		
Corresponding Author's Institution:	Deakin University Faculty of Health	
Corresponding Author's Secondary Institution:		
First Author:	Barbara R Cardoso, Ph.D	
First Author Secondary Information:		
Order of Authors:	Barbara R Cardoso, Ph.D	
	Blaine R Roberts, PhD	
	Charles B Malpas, PhD	
	Lucy Vivash, PhD	
	Sila Genc, PhD	
	Michael M Saling, Phd	
	Patricia Desmond, PhD	
	Christopher Steward, PhD	
	Rodney J Hicks, PhD	
	Jason Callahan, PhD	
	Amy Brodtmann, PhD	
	Steven Collins, PhD	
	Stephen Macfarlane, PhD	
	Niall M Corcoran, PhD	
	Christopher M Hovens, PhD	
	Dennis Velakoulis, PhD	
	Terence J O'Brian, PhD	
	Dominic J Hare, PhD	
	Ashley I Bush, PhD	
Order of Authors Secondary Information:		
Funding Information:	Conselho Nacional de Desenvolvimento Científico e Tecnológico	Dr Barbara R Cardoso
	Deakin University	Dr Barbara R Cardoso
	Australian National Health and Medical Research Council	Dr Blaine R Roberts

	(GNT1138673)	
	Australian National Health and Medical Research Council (GNT1105784)	Dr Steven Collins
	Australian National Health and Medical Research Council (GNT1122981)	Dr Dominic J Hare
	Australian National Health and Medical Research Council (GNT1103703)	Dr Ashley I Bush
	Australian National Health and Medical Research Council (GNT1132604)	Dr Ashley I Bush
	Velacor Therapeutics	Dr Terence J O'Brian
	Agilent Technologies (AU)	Dr Blaine R Roberts
	Agilent Technologies (AUS)	Dr Blaine R Roberts
Abstract:	<p>Insufficient supply of selenium to antioxidant enzymes in the brain may contribute to Alzheimer's disease (AD) pathophysiology; therefore, oral supplementation may potentially slow neurodegeneration. We examined selenium and selenoproteins in serum and cerebrospinal fluid (CSF) from a dual-dose 24-week randomized controlled trial of sodium selenate in AD patients, to assess tolerability, and efficacy of selenate in modulating selenium concentration in the central nervous system (CNS). A pilot study of 40 AD cases were randomized to placebo, nutritional (0.32 mg sodium selenate, three times daily), or supranutritional (10 mg, three times daily) groups. We measured total selenium, selenoproteins, and inorganic selenium levels, in serum and CSF, and compared against cognitive outcomes. Supranutritional selenium supplementation was well tolerated and yielded a significant ($p < 0.001$) but variable (95% CI = 13.4 - 24.8 $\mu\text{g/L}$) increase in CSF selenium, distributed across selenoproteins and inorganic species. Reclassifying subjects as either responsive or non-responsive based on elevation in CSF selenium concentrations revealed a moderate improvement in Mini-Mental Status Examination (MMSE) scores (+3.2 points, $p = 0.03$). Pooled analysis of all samples revealed that CSF selenium could predict change in MMSE performance (Spearman's $\rho = 0.403$; $p = 0.023$). High-dose sodium selenate supplementation is well tolerated and can modulate CNS selenium concentration, although individual variation in selenium metabolism must be considered to optimize potential benefits in AD.</p>	
Response to Reviewers:	See attachment.	

Manuscript NERX-D-18-00120

Supranutritional sodium selenate supplementation safely delivers selenium to the central nervous system: results from a randomized controlled pilot trial in Alzheimer's disease

Response to Reviewers

Reviewer #1:

R1.1 *“Currently, the widely accepted tolerable upper limit is in the range of 400 µg/day, the no observed adverse effect level at 800 µg/day and the lowest observed adverse effect level starts at around 900 µg/day, respectively. A recent report with 30 mg (!) Se/daily dose affected around 100 healthy subjects, developing hair and nail loss and a number of long-lasting side effects (Morris JS, Crane SB. Selenium toxicity from a misformulated dietary supplement, adverse health effects, and the temporal response in the nail biologic monitor. *Nutrients*. 2013;5(4):1024-57.) This report indicates that such high intakes of around 500-times the recommended daily intake of 60-70 µg/day do not directly cause fatalities but rather health problems. The authors used such overdoses but report no health problems which sound controversial to accepted knowledge.”*

We appreciate the Reviewer pointing out concerns about the possible toxicity of the highest dose of selenate tested. We found that there were no serious adverse events that were emergent at this dose, and we note this in the Results. We reconcile our findings with the report of Morris and Crane (and associated reports) by noting the following:

1. The misformulated supplement exposed subjects to an average of ≈ 30 mg of elemental selenium per day. The highest dose we tested was 30 mg of sodium selenate per day in divided doses, which is equivalent to 12.5 mg of elemental selenium per day, i.e. less than half the dose of selenium in the misformulated supplement.
2. The selenium in the misformulated supplement was combined with many other bioactive ingredients including chromium at 17 times the RDA. This may have increased the toxicological burden.
3. The no observed adverse effect level that the Reviewer mentions would apply to normal people (e.g. in the context of supplementation), but in a chemotherapeutic

intervention trial such as ours, a certain degree of adverse effects can be acceptable. Since our trial of sodium selenate at 30 mg per day has been completed under controlled conditions, the data in our current manuscript are all the more important to examine whether this drug can be used safely in this disease context.

4. No deaths or hospitalizations were attributed to the misformulated supplement exposure, and the range of symptoms reported were mainly gastrointestinal complaints, mood changes, and skin and nails changes. These types of adverse effects may be considered acceptable in a successful chemotherapeutic intervention for a severe neurodegenerative disorder, such as Alzheimer's disease. Nevertheless, every effort must be made to mitigate them, with the selenium treatment dose being less than half that of the misformulated supplement, the range of treatment-emergent adverse events (TEAEs) found in our study is reassuring.

Nevertheless, to address the concerns about the high dose of selenium being used we have rewritten the final paragraph of the Results section (as follows), and added Discussion of the misformulated supplement reports (below that):

“Treatment emergent adverse events (TEAEs) were reported previously according to treatment group, with 90% reporting at least one TEAE [1]. To summarize, all TEAEs were reported as mild. The most common solicited TEAEs (incidence $\geq 20\%$ in both placebo/nutritional and supranutritional groups) were fatigue, headache, and lethargy; with nausea, muscle spasms, and dizziness reported in the supranutritional group. One participant experienced a pre-syncopal serious adverse event that was resolved in 24 hours and continued in the study. Two supranutritional group participants withdrew due to TEAEs; one due to appearance of a skin rash of uncertain cause, and the other resulting from dysmorphic changes in toenails and fingernails. In the latter case, the participant had the 24-week observation and was not excluded from further analysis. On application of our responsive/non-responsive stratification, no relationship between the number of TEAEs and level of selenium uptake was observed ($p = 0.976$ for serum; $p = 0.900$ for CSF; Fisher's exact test).”

We also now discuss the implications of Morris and Crane's report [2], as well as the related article by MacFarquhar *et al* [3] in the Discussion:

“While significantly more subjects in the Supranutritional group (35%) experienced TEAEs compared to the placebo group (10%) [1], the adverse effect profile was similar to that associated with toxicity resulting from consumption of a misformulated nutritional supplement in the US in the late 2000s that contained selenium at \approx 400-fold the recommended daily allowance (RDA) [2, 3]. In this incident, an unknown number of consumers inadvertently received a daily selenium dose in the order of 30 mg equivalent, as well as \approx 30 mg of chromium and other substances. We note that the misformulated supplement exposed subjects to an average of \approx 30 mg of elemental selenium per day. The highest dose we tested was 30 mg of sodium selenate per day in divided doses, which is equivalent to 12.5 mg of elemental selenium per day, i.e. less than half the dose of selenium in the misformulated supplement. Furthermore, the chromium in the misformulated supplement (17-fold the RDA), as well as many other bioactive ingredients in the mixture, may have potentiated the toxicological burden. In any case, since our trial of sodium selenate at 30 mg per day was completed under controlled conditions, the data are important to examine whether this drug can be used safely in this disease context. Our observations that 30 mg of sodium selenate per day for 24 weeks, being less than half that of the misformulated supplement, without serious adverse events is reassuring for the use of this dose as a chemotherapeutic, where the benefits may exceed the risk of mild TEAEs.”

R1.2 “*Line 112: The method should not only [be] referred to in another paper but at last shortly described.*”

As we understand it, the reviewer could be referring to the analytical method used for selenium determination in the Seronorm standard by ICP-MS. This certified reference material was analysed using the conditions outlined. For clarity, we have elaborated this section of the Subjects and Methods to read:

“Determination of total selenium concentration in serum and CSF

Selenium concentration in serum and CSF was measured using inductively coupled plasma-mass spectrometry (ICP-MS). Neat serum and CSF were diluted in 1% nitric acid (1:20 and 1:3 respectively, to 300 μ L final volume). Selenium was measured on

mass at $m/z = 78$ (^{78}Se ; natural abundance = 23.8%) using an Agilent Technologies 7700x ICP-MS system (Agilent Technologies, Australia) fitted with 'cs' lenses and platinum cones. Hydrogen (4 mL/min) was used as a reaction gas to remove polyatomic interferences at $m/z = 78$. Values were the average of four technical replicates. Selenium concentrations were calculated by external calibration using multi-element standards (AccuStandard, USA) containing of 0, 0.1, 0.5, 1, 5, 10, 50, 100 $\mu\text{g/L}$ of selenium. An internal standard solution containing 200 $\mu\text{g/L}$ of yttrium (^{89}Y) was introduced online *via* a Teflon T-piece. Analytical validity was assessed using reconstituted lyophilized Seronorm™ Trace Elements in Serum (Sero AS, Norway) standard reference materials, which was prepared using the same protocol for serum samples. The measured analytical recovery of selenium in the Seronorm™ standard was within the acceptable range, per manufacturer's guidelines (measured serum = $153.89 \pm 6.48 \mu\text{g/L}$, $n = 4$; certified range = 95–176 $\mu\text{g/L}$.)”

R1.3 “Line 113: The authors add 1 % HNO₃ to neat serum. Proteins will be denatured and precipitated including selenoproteins. Wrong determinations are likely to occur.”

1% nitric acid was used as a diluent for serum and CSF aliquots undergoing total selenium analysis by ICP-MS, as described above. Nitric acid (pH<1) is not a flocculent under these conditions, and we observed no precipitates. But, in any case, to confirm that the extraction method captured all the selenium present in the samples, we used a certified reference standard of serum with a known amount of selenium (Seronorm™), as described in our revised methods above. Our recovery was in accordance with the certified reference range, indicating that we had not unduly lost selenium content during processing.

R1.4 “Line 119: The concentration of the internal standard should be in the concentration range of the analyte in the final measurement solution. 20 $\mu\text{g/L}$ is way too high.”

The ^{89}Y internal standard meets all necessary selection criteria for ICP-MS, specifically: i) monoisotopic; ii) absence of interferences; iii) no matrix effects; iv) comparable atomic mass to analyte (89 amu vs 78 amu); and v) not present in the samples analysed. It should be noted that concentration is not considered a criterion for internal standard selection for ICP-MS, as the wide linear dynamic range covers at least nine orders of magnitude [4]. The stated concentration of ^{89}Y of 20 $\mu\text{g/L}$ is a reference value only; the final

concentration following online addition *via* narrow-bore 0.64 mm i.d. Tygon tubing and mixing in a T-piece results in a substantially lower concentration. Importantly, online addition, as opposed to sample spiking, provides better signal stability, which is essential for internal standard use in ICP-MS.

R1.5 *'Line 124: Analytical quality control must be included in the paper and must be clearly shown. Please provide the data of recovery, accuracy and precision, not just "within acceptable range".'*

As mentioned above, we now include recovery, accuracy and precision of the Seronorm standard as the mean \pm standard deviation of four replicate measures:

“The measured analytical recovery of selenium in the Seronorm™ standard was within the acceptable range, per manufacturer’s guidelines (measured serum = 153.89 \pm 6.48 $\mu\text{g/L}$, $n = 4$; certified range = 95–176 $\mu\text{g/L}$).”

R1.6 *“Line 130-144: Size exclusion chromatography is unable to really identify the seleno species. Roughly, a separation between se-proteins and small Se ligands may be possible. There will be no way to differentiate between Se (IV) and Se (VI). The assumption of the authors for the last peak being Se (IV) is supported by no data. Also the known additional retention effects in SEC cannot hold for Se (IV), if so more likely for small organic compounds.”*

We agree that SEC does not have sufficient resolution to distinguish between oxidation states of selenium. We originally stated that the later-eluting peak was only provisionally assigned as selenite, but we have now clarified our discussion of this observation, as follows:

“Two additional resolved peaks were also significantly increased ($p < 0.001$, Student’s t -test) in serum from the supranutritional group, representing inorganic selenate and an unidentified selenium-containing compound, both eluting below the lower molecular weight limit of the SEC column. Interactions between the silica column and negatively charged inorganic selenium compounds are known to influence retention time in SEC-ICP-MS [5], thus we suspect that the peak following

the selenate standard (serum Peak 3, CSF Peak 4, Fig 4) might be selenite (SeO_3^{2-}). A previous analytical study of the stability of selenocompounds in human serum suggested selenite is not present in freshly-drawn serum and is an artifact of storage, but the report examined serum from only two donors, with total serum selenium at levels not commensurate with our supranutritional group [6]. Regardless of its chemical species, the appearance of this selenium-containing peak at 24-weeks is indicative of a specific response to supranutritional selenium supplementation.”

R1.7 “Table 2: Please complete with data on Selenoproteins and inorganic Se compounds.”

We quantitated the selenium chromatograms produced using SEC-ICP-MS by signal intensity for each peak (as area under the curve) and have included this information as Table 3. This allows comparisons between treatment groups of areas under the curve for the 4 peaks identified.

R1.8 “Table 2: Even the placebo group has really high Se concentration in serum. How should the postulated (by authors) ‘redox deficiency’ be explained when Se is already sufficiently high?”

We wish to stress that at no point did we use the term ‘redox deficiency’. We note, in the last paragraph of the introduction, that there were a host of apparent benefits in preclinical models of AD treated with selenate, specifically,

- reducing pathological tau hyperphosphorylation *via* activation of protein phosphatases 2A,
- down-regulation of BACE1 expression
- suppression of amyloid and markers of nucleic acid oxidation in APP/PS1 transgenic mice.

It was on the basis of these findings that sodium selenate proceeded to clinical trial testing for AD. However, selenium is involved in redox management within the brain, and this activity is regulated by selenoprotein synthesis in the central nervous system (CNS), independent of circulating selenium levels. Thus, we suspect that one additional potential mechanism of action of sodium selenate therapy might be to augment CNS selenoprotein

synthesis, which would be important in AD where levels of brain selenium are decreased compared to normal tissue. Why this happens in AD in the presence of normal serum concentrations of Se is not yet clear, but also not within the scope of this report. Changes in brain chemistry in disease are not always reflected in the periphery or blood. Nonetheless, we have now elaborated more on this in the Discussion.

“... glutathione peroxidase 4 (GPx4) is the most abundant selenoprotein in brain, and has recently garnered attention as an important regulator of ferroptosis [7], a newly identified form of iron-dependent programmed cell death that causes aggressive lipid peroxidation [8, 9] thought to play a major role in AD pathology [10]. Since AD affected brain tissue has lower levels of selenium [11, 12], GPx4 expression and activity may suffer from insufficient selenium supply, and on this basis supplementation trials are worth exploring.”

R1.9 “Figure 3: The authors compare slopes, being nearly the same and draw conclusions. However when looking on those data, the sample size is very small each and the respective slopes are practically defined from one point, which in both cases could also look like an outlier. All the other data points do not allow to come to a clear conclusion.”

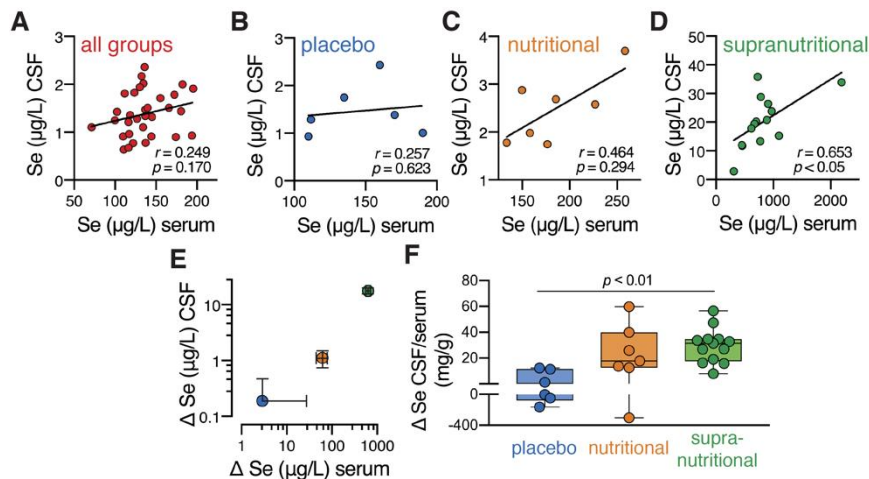
The Reviewer makes a good point, and we were also concerned about the small sample size, as we mentioned in the text. In this revision, we have deleted this panel and replaced it with a new analysis. Our point was to test whether the dimension of the change in CSF Se content after 24 weeks was commensurate with the change in serum Se content in our three treatment groups. To examine this, we have now expressed the results differently, although all the data points are still presented.

Figure 3E now shows the mean change in serum Se (x axis) and CSF Se (y axis) in matched subjects (where both serum and CSF samples were available and assayed at both baseline and 24 weeks of treatment). The inset shows the individual data points from each subject (with box and whisker analysis) expressed as the change in CSF Se per unit change in serum Se. This allows us to test whether the change in CSF Se is simply proportional to the change in serum. We find that this is roughly correct: that the increase in CSF Se is a muted reflection of the change in CSF Se. For every g increase in serum Se, there is a ≈ 30 mg increase in CSF Se, ie about 3% of serum Se boost is transduced into the CSF, following supranutritional Se supplementation.

The revised Results now reads:

“We examined whether the dimension of the change in CSF Se content after 24 weeks’ treatment was commensurate with the change in serum Se content in our three treatment groups. We analysed the change in serum selenium matched to the change in CSF selenium in subjects where both samples were available and assayed at baseline and 24 weeks of treatment. The mean changes in each group indicated that the boost in serum selenium following supplementation was matched by a muted increase in CSF selenium. Of the increase in serum selenium in the two supplementation group, only $\approx 3\%$ of the increase was transduced into the CSF (Fig. 3E&F). The change in CSF Se was approximately proportional to the change in serum in both the nutritional and the supranutritional selenate supplementation groups. In the supranutritional group, the increase in CSF selenium as a proportion of the change in serum selenium was significantly more than in the placebo group ($\approx 3\%$, Dunn’s test $p = 0.0019$, Fig. 3F), consistent with a small proportion of the boost in serum selenium surmounting the blood brain barrier with this high dosage regimen.”

Figure 3 revised:



The Figure legend for Figure 3E&F now reads:

“(E) Changes in serum selenium (x axis) and CSF selenium (y axis) in matched subjects (where both serum and CSF samples were available and assayed at both baseline and 24 weeks of treatment). Data are means \pm SD, $n = 6, 7$ and 13 for placebo, nutritional and supranutritional groups, respectively. The axes are in log units to capture the large shifts in values as the doses are increased. F) Individual data points from each subject (with box and whisker analysis) expressed as the change in CSF Se per unit change in serum Se for each

matched subject. The supranutritional group exhibited a small boost in CSF selenium when normalized to the change in serum selenium ($\approx+3\%$, or ≈ 30 mg/g). P value is from Dunn's multicomparison's test."

R1.10 *"Line 237: The retention time of SELENOP can be only roughly indicative with a column separation range of that big range and the short retention times. Furthermore, the authors assign the first peak to SELENOP and a second to Se-HAS, although Se-HAS is slightly bigger and thus must elute before (!) SELENOP. It seems that the peak assignments are wrong."*

The reviewer is correct, the peaks were incorrectly deduced for serum and CSF samples. Corrected text now reads:

"...Selenate supplementation clearly increased binding of selenium into serum proteins (Fig 4A), with a large increase ($+656\%$; $p < 0.001$, Student's *t*-test) in the earliest eluting peak (Peak #1, Fig. 4A). We have previously characterized the selenium content in this peak by SEC-ICP-MS and MS/MS bottom up proteomics, and confirmed the presence of both selenoprotein P (comprising $\approx 50\%$ of this peak) and albumin that could not be discriminated by chromatography at this resolution [13]. Selenoprotein P has a molecular mass of 43 kDa, but is highly glycosylated. The molecular mass of albumin is 67 kDa, and Peak #1 has an apparent M_r of 75 kDa against size standards. Using this approach, we cannot discriminate between selenium incorporated as selenocysteine and that being transported *via* transient binding to free thiol groups on serum albumin [14]. Chemically inert buffers at physiological pH used for SEC-ICP-MS preserve the integrity of selenium thiol ligands, with the compromise being relatively low separation efficiency [15]. As such, we suspect that Peak #1 contains highly-abundant serum albumin followed closely (without resolution) by selenoprotein P..."

Reviewer #2

R2.1 *"...there is no sufficient evidence to support that Peak I in Fig 4 is selenoprotein P. Western blot with SelP antibody is suggested to confirm the increase of SelP levels."*

See response to **R1.10**, and the appropriate caveats that we introduce about peak assignment. We agree that we cannot confidently assign identities to Peak #1. However, our purpose was not specifically to study specific selenoprotein incorporation following selenate supplementation.

R2.2 “...why there is no increase in the levels of Gpx4 and any other selenoproteins except SelP, since Gpx4 is the most abundant selenoprotein in the brain?”

While Gpx4 is the most abundant selenoprotein in the brain, it is a membrane-associated protein that is not found in CSF [16]. Other selenoproteins are either membrane-resident or intracellular, and not expected in the biological fluids that we examined.

R2.3 “...in Fig4-B, the levels of selenate (peak 3) in the CSF varied little before and after the supplementation of selenate at the high dose. Why? The author should give a discussion.”

We agree that this is interesting –selenium appeared to be thrust into proteins upon supplementation and the selenate peak changed little (although if you consider Peak #4 as well, then the amount of selenate + selenite might have doubled). With the addition of Table 3, specific numbers can be compared. We have rewritten this section of the Results as follows:

“In CSF samples, we again identified a marked increase in the low mass peaks, selenate (Peak #3 provisionally, +29.7%, $p < 0.001$) plus selenite (suspected for Peak #4), following supranutritional supplementation. The lower total selenium concentration in CSF reduced the effect of peak tailing, allowing selenoprotein P (likely to be Peak #2), which we have previously confirmed in CSF samples using a targeted proteomics approach [13], to be resolved from albumin (likely to be Peak #1), which is also present in CSF [17]. Selenium bound to albumin was markedly increased in the supranutritional group (Peak #1 in Fig 4B, +3022%, $p < 0.001$), as was the selenoprotein P peak following selenate treatment (Peak #2 in Fig 4B, $p < 0.001$; Table 3). Both selenium-binding proteins were below the limit of detection in untreated CSF, consistent with previous findings [16]. It was also apparent from the ratios of the selenium in the chromatographic protein peaks to the low mass peaks (Table 3), that selenate supplementation boosted selenoprotein production far more in the periphery (serum, Fig 4A) than in the brain (CSF, Fig 4B).

Thus, augmenting brain levels of selenoprotein P (and potentially other selenoproteins) may require higher levels of selenate precursor than peripheral organs.”

R2.4 “The word “safely” in the title should be re-considered.”

Although the TEAEs presented by treated participants were mild in this study, we agree with the reviewer that further studies are needed to confirm the safety of high dose of sodium selenate. We have removed ‘safely’ from the manuscript title.

Reviewer #3

R3.1 “Sample sizes are relatively small and may therefore undermine the analyses involving ANCOVA especially given group comparability on subject factors.”

The Reviewer is quite correct. We apologize that there was an error in our description of the statistical test that we used for comparison between groups. We report differences over time, and to do so we actually used either Wilcoxon Signed Rank or paired Student’s *t* tests. Log transformed values were calculated for change variables, that were used for comparison between responsive and non-responsive groups. The corrected text now reads:

“All statistical analyses were conducted on the intention to treat population. Data were included for all participants enrolled in the study who had complete data for this exploratory analysis. Baseline characteristics were compared between groups using ANOVA for continuous data and using Fisher’s exact test when data were categorical. Longitudinal changes were assessed by Wilcoxon Signed Rank or paired Student’s *t* tests. Correlation analyses were performed using Pearson’s correlation coefficient or Spearman’s rho, depending on the presence or absence of normal data distribution as assessed by Kolmogorov-Smirnov. When correlation analysis was performed using change variables, log transformed data was included instead of raw numbers. For SEC-ICP-MS chromatograms, peak areas were derived using the standard width-at-half-height method in Prism Version 6h (GraphPad, USA), normalized to total protein content, and compared against peaks with corresponding molecular mass using a paired Student’s *t*-test.”

R3.2 “Multiple comparisons limit the results, especially as reported without adjustment for multiple comparisons.”

See response to R3.1 above.

R3.3 “Changes in biomarkers and cognitive measures might also be examined with baseline value as covariate rather than change scores.”

We initially performed linear regression analysis using baseline selenium as covariate, but no effect was observed. We decided not to show this information as we were unpowered for multiple comparisons adjusted for covariates.

R3.4 “Lovell MA, Xiong S, Lyubartseva G, Markesbery WR. Organoselenium (Sel-Plex diet) decreases amyloid burden and RNA and DNA oxidative damage in APP/PS1 mice. *Free Radic Biol Med.* 2009 Jun 1;46(11):1527-33.”

We have added reference to this work in the Introduction:

“...It also down-regulates the expression of BACE1, a key enzyme involved in the AD-associated amyloid deposition [18], and reduces levels of amyloid and markers of oxidative damage to RNA and DNA in APP/PS1 transgenic mice [19].”

R3.5 “Xiong S, Markesbery WR, Shao C, Lovell MA. Seleno-L-methionine protects against beta-amyloid and iron/hydrogen peroxide-mediated neuron death. *Antioxid Redox Signal.* 2007 Apr;9(4):457-67.”

We have added reference to this work in the Discussion

“...Since AD affected brain tissue has lower levels of selenium [11, 12] and selenium supplementation has been shown to directly interdict amyloid and iron neurotoxicity by modulating GPx activity [20], GPx4 expression could thereby have insufficient selenium supply, and on this basis supplementation trials are worth exploring.”

References:

1. Malpas CB, Vivash L, Genc S et al. A Phase IIa Randomized Control Trial of VEL015 (Sodium Selenate) in Mild-Moderate Alzheimer's Disease. *J Alzheimers Dis.* 2016;54(1):223-32.
2. Morris J, Crane SB. Selenium Toxicity from a Misformulated Dietary Supplement, Adverse Health Effects, and the Temporal Response in the Nail Biologic Monitor. *Nutrients.* 2013;5(4):1024-57.
3. MacFarquhar JK, Broussard DL, Melstrom P et al. Acute selenium toxicity associated with a dietary supplement. *Arch Intern Med.* 2010;170(3):256-61.
4. Taylor HE. Inductively coupled plasma-mass spectrometry, Practices and Techniques. Academic Press; 2001.
5. Onning G, Bergdahl IA. Fractionation of soluble selenium compounds from fish using size-exclusion chromatography with on-line detection by inductively coupled plasma mass spectrometry. *Analyst.* 1999;124(10):1435-8.
6. Palacios Ò, Lobinski R. Investigation of the stability of selenoproteins during storage of human serum by size-exclusion LC-ICP-MS. *Talanta.* 2007;71(4):1813-6.
7. Cardoso B, Hare D, Bush A, Roberts B. Glutathione peroxidase 4: a new player in neurodegeneration? *Mol Psychiatry.* 2017;22(3).
8. Dixon SJ, Lemberg KM, Lamprecht MR et al. Ferroptosis: an iron-dependent form of nonapoptotic cell death. *Cell.* 2012;149(5):1060-72.
9. Dixon SJ, Stockwell BR. The role of iron and reactive oxygen species in cell death. *Nat Chem Biol.* 2014;10(1):9-17.
10. Stockwell BR, Angeli J, Bayir H et al. Ferroptosis: A Regulated Cell Death Nexus Linking Metabolism, Redox Biology, and Disease. *Cell.* 2017;171(2):273-85.
11. Cardoso BR, Hare DJ, Lind M et al. The APOE ϵ 4 Allele Is Associated with Lower Selenium Levels in the Brain: Implications for Alzheimer's Disease. *ACS Chem Neurosci.* 2017;8(7):1459-1464.
12. Loeff M, Schrauzer GN, Walach H. Selenium and Alzheimer's disease: a systematic review. *J Alzheimers Dis.* 2011;26:81-104.
13. Cardoso BR, Hare DJ, Bush AI et al. Selenium Levels in Serum, Red Blood Cells, and Cerebrospinal Fluid of Alzheimer's Disease Patients: A Report from the Australian Imaging, Biomarker & Lifestyle Flagship Study of Ageing (AIBL). *J Alzheimers Dis.* 2017;57(1):183-93.
14. Haratake M, Hongoh M, Miyauchi M et al. Albumin-mediated selenium transfer by a selenotrisulfide relay mechanism. *Inorg Chem.* 2008;47(14):6273-80.

15. Bishop DP, Hare DJ, Clases D, Doble PA. Applications of liquid chromatography-inductively coupled plasma-mass spectrometry in the biosciences: a tutorial review and recent developments. *TrAC Trends in Analytical Chemistry*. 2018;104:11-21.
16. Solovyev N, Berthele A, Michalke B. Selenium speciation in paired serum and cerebrospinal fluid samples. *Anal Bioanal Chem*. 2013;405(6):1875-84.
17. Ganrot K, Laurell CB. Measurement of IgG and albumin content of cerebrospinal fluid, and its interpretation. *Clinical Chem*. 1974;20(5):571-3.
18. Jin N, Zhu H, Liang X et al. Sodium selenate activated Wnt/beta-catenin signaling and repressed amyloid-beta formation in a triple transgenic mouse model of Alzheimer's disease. *Exp Neurol*. 2017;297:36-49.
19. Lovell MA, Xiong S, Lyubartseva G, Markesbery WR. Organoselenium (Sel-Plex diet) decreases amyloid burden and RNA and DNA oxidative damage in APP/PS1 mice. *Free Rad Biol Med*. 2009;46(11):1527-33.
20. Xiong S, Markesbery WR, Shao C, Lovell MA. Seleno-L-Methionine Protects Against β -Amyloid and Iron/Hydrogen Peroxide-Mediated Neuron Death. *Antioxid Redox Signal*. 2007;9(4):457-67.

Original research

1
2
3
4
5 **Supranutritional sodium selenate supplementation delivers selenium to the central**
6
7 **nervous system: results from a randomized controlled pilot trial in Alzheimer's disease**
8
9

10
11
12 **Authors**
13

14 Barbara R Cardoso^{* a}, Blaine R Roberts[†], Charles B Malpas^{‡ § ¶ ||}, Lucy Vivash^{‡ ||}, Sila Genc^{¶ #},
15
16 Michael M Saling[§], Patricia Desmond^{**}, Christopher Steward^{**}, Rodney J Hicks^{** ††}, Jason
17
18 Callahan^{††}, Amy Brodtmann^{† ‡‡}, Steven Collins^{‡ §§}, Stephen Macfarlane^{¶¶}, Niall M Corcoran^{|||},
19
20 Christopher M Hovens^{|||}, Dennis Velakoulis^{###}, Terence J O'Brien^{‡ ||}, Dominic J Hare^{† a}, and
21
22 Ashley I Bush[†].
23
24
25
26
27
28

29 **Author Affiliations**
30

31 ^{*}Institute for Physical Activity and Nutrition Research, School of Exercise and Nutrition
32
33 Sciences, Deakin University, Geelong, VIC, Australia (BRC).
34
35

36 [†]Melbourne Dementia Research Centre, The Florey Institute of Neuroscience and Mental
37
38 Health and The University of Melbourne, Parkville, VIC, Australia (BRC, BRR, AB, DJH,
39
40 AIB).
41
42

43 [‡]Department of Medicine, Royal Melbourne Hospital, Melbourne, VIC, Australia (CBM, LV,
44
45 SC, TJO'B).
46
47

48 [§]Melbourne School of Psychological Sciences, The University of Melbourne, Parkville, VIC,
49
50 Australia (CBM, MMS).
51
52

53 [¶]Developmental Imaging, Murdoch Children's Research Institute, Melbourne, VIC, Australia
54
55 (CBM, SG).
56
57
58
59
60
61
62
63
64
65

1 ||Departments of Neuroscience and Neurology, The Central Clinical School and The Alfred
2 Hospital, Monash University, Melbourne, VIC, Australia (CBM, LV, TJO'B).

3
4 #Department of Paediatrics, The University of Melbourne, Parkville, VIC, Australia (SG).

5
6
7 **Department of Radiology, Royal Melbourne Hospital, University of Melbourne, Melbourne,
8
9 VIC, Australia (PD, CS, RJH).

10
11
12 ††Centre for Molecular Imaging, Peter MacCallum Cancer Centre, Melbourne, VIC, Australia
13
14 (RJH, JC).

15
16
17 ††Eastern Cognitive Disorders Clinic, Department of Neurology, Eastern Health, Monash
18
19 University, Melbourne, VIC, Australia (AB).

20
21
22 §§Department of Clinical Neurosciences and Neurological Research, St Vincent's Hospital,
23
24 Fitzroy, VIC, Australia (SC).

25
26 ¶¶Caulfield Hospital, Alfred Health, Caulfield, VIC, Australia (SM)

27
28
29 ||||Department of Surgery, Royal Melbourne Hospital, Melbourne, VIC, Australia (NMC,
30
31 CMH).

32
33
34 ##Department of Psychiatry, The University of Melbourne, VIC, Australia (DV).

35 36 37 38 39 **Corresponding authors**

40
41 ^aBarbara R. Cardoso, Institute for Physical Activity and Nutrition Research, School of
42
43 Exercise and Nutrition Sciences, Deakin University, Burwood Campus, 221 Burwood
44
45 Highway, VIC 3125, Australia; Ph: +61 3 9246 8396; Email: barbara.r@deakin.edu.au

46
47
48 ^aDominic J. Hare, The Florey Institute of Neuroscience and Mental Health, 30 Royal Parade,
49
50
51 Parkville, VIC 3052, Australia; Ph: +61 3 9035 9549; Email: dominic.hare@florey.edu.au
52
53
54
55
56
57
58
59
60
61
62
63
64
65

Running Title

Sodium selenate delivers selenium to the brain

Abbreviations

AD, Alzheimer's disease; ApoE, apolipoprotein E; CNS, central nervous system; CSF, cerebrospinal fluid; GPx, glutathione peroxidase; ICP-MS, inductively coupled plasma-mass spectrometry; MMSE, Mini-Mental Status Examination; MRI, magnetic resonance imaging; Se, selenium; SeMet, selenomethionine; SeO_4^{2-} , selenate; SeO_3^{2-} , selenite; SAE, serious adverse event; SEC, size exclusion chromatography; TEAE, treatment emergent adverse event

Clinical Trial Registry number and website:

The Vel002 study is listed on the Australian and New Zealand Clinical Trials Registry (<http://www.anzctr.org.au/>), ID: ACTRN12611001200976

Abstract

1
2
3 Insufficient supply of selenium to antioxidant enzymes in the brain may contribute to
4
5 Alzheimer's disease (AD) pathophysiology; therefore, oral supplementation may potentially
6
7 slow neurodegeneration. We examined selenium and selenoproteins in serum and
8
9 cerebrospinal fluid (CSF) from a dual-dose 24-week randomized controlled trial of sodium
10
11 selenate in AD patients, to assess tolerability, and efficacy of selenate in modulating selenium
12
13 concentration in the central nervous system (CNS). A pilot study of 40 AD cases were
14
15 randomized to placebo, nutritional (0.32 mg sodium selenate, three times daily), or
16
17 supranutritional (10 mg, three times daily) groups. We measured total selenium,
18
19 selenoproteins, and inorganic selenium levels, in serum and CSF, and compared against
20
21 cognitive outcomes. Supranutritional selenium supplementation was well tolerated and
22
23 yielded a significant ($p < 0.001$) but variable (95% CI = 13.4 - 24.8 $\mu\text{g/L}$) increase in CSF
24
25 selenium, distributed across selenoproteins and inorganic species. Reclassifying subjects as
26
27 either responsive or non-responsive based on elevation in CSF selenium concentrations
28
29 revealed a moderate improvement in Mini-Mental Status Examination (MMSE) scores (+3.2
30
31 points, $p = 0.03$). Pooled analysis of all samples revealed that CSF selenium could predict
32
33 change in MMSE performance (Spearman's $\rho = 0.403$; $p = 0.023$). High-dose sodium
34
35 selenate supplementation is well tolerated and can modulate CNS selenium concentration,
36
37 although individual variation in selenium metabolism must be considered to optimize
38
39 potential benefits in AD.
40
41
42
43
44
45
46
47
48
49
50
51

Key words

52
53
54
55
56
57 sodium selenate, selenium, Alzheimer's disease, supranutritional selenium supplementation,
58
59 randomized controlled trial.
60
61
62
63
64
65

Introduction

1
2
3 Selenium is essential for normal neurological function [1]. Insufficient selenium intake
4
5 produces inactive selenoproteins, which increases vulnerability to oxidative stress. In the
6
7 brain, this has been associated with cognitive decline [2, 3]. This may contribute to the
8
9 pathogenesis of neurodegenerative diseases such as Alzheimer's disease (AD).
10

11
12 Oxidative damage is a biochemical hallmark of AD [4], and therapies designed to reduce
13
14 cellular oxidative load may have therapeutic potential [5]. The clinical trials of selenium
15
16 supplementation in AD patients are small in number and power, and have produced
17
18 inconclusive data (reviewed by Loef *et al.* [6]). Nevertheless, reported associations between
19
20 selenium status and cognition from human *post mortem* findings, as well as animal studies,
21
22 indicate a potential role for selenium deficiency in AD.
23
24
25
26
27
28
29

30 There is no consensus yet regarding changes in circulating selenium levels in AD [7],
31
32 although several large cohort studies reported lowered levels [8, 9, 3]. We recently reported
33
34 that *post mortem* temporal cortex samples from AD cases contain $\approx 14\%$ less total selenium
35
36 than age-matched healthy controls [10]. The apolipoprotein-E (*APOE*) $\epsilon 4$ allele, which is the
37
38 major genetic risk factor for AD, was also associated with a decrease in selenium in these
39
40 samples, and a redistribution of selenium in the tissue from the membrane-bound and
41
42 insoluble fractions to the soluble fraction [10].
43
44
45
46
47
48
49

50 A small-scale randomized pilot trial of subjects with mild cognitive impairment (MCI) [11],
51
52 supplemented daily with selenomethionine (SeMet)-rich Brazil nuts (*Bertholletia excelsa*;
53
54 ≈ 290 μg selenium/day; $\sim 75\%$ as SeMet [12]) found improved verbal fluency and
55
56 constructional praxis after six months compared to controls [13]. In contrast, the large-scale
57
58 primary prevention PREADViSE study (ClinicalTrials.gov identifier NCT00040378) found
59
60
61
62
63
64
65

1 that long-term (5.4 ± 1.2 years of supplement use) daily supplementation with SeMet (200
2 $\mu\text{g}/\text{day}$) did not decrease the risk for dementia in cognitively healthy males over 60 years of
3 age [14].
4

5
6
7
8 Selenium supplementation can also be achieved using inorganic forms, such as selenate
9 (SeO_4^{2-}) and selenite (SeO_3^{2-}). Selenate reduces pathological tau hyperphosphorylation
10 common to AD *via* activation of protein phosphatases 2A both *in vitro* and in animal models
11 of tauopathies [15-17]. **It also down-regulates the expression of BACE1, a key enzyme**
12 **involved in the AD-associated amyloid deposition [18], and reduces levels of amyloid and**
13 **markers of nucleic acid oxidation in APP/PS1 transgenic mice [19].** Our group recently
14 reported results of a Phase IIa exploratory trial of selenate in AD (Vel002) [20], and showed
15 that despite a significant amelioration of brain structural deterioration, there were no
16 significant effects on cognitive performance outcomes. However, it is not proven whether
17 selenate effectively delivers selenium into the central nervous system (CNS). In this study, as
18 exploratory analysis, we examined the selenium concentration in serum and cerebrospinal
19 fluid (CSF) taken from patients participating in this Phase IIa trial to assess the degree to
20 which 24-week sodium selenate (Na_2SeO_4) supplementation at the doses used increased
21 serum and CSF selenium concentration, the latter indicative of selenium uptake by the CNS.
22
23
24
25
26
27
28
29
30
31
32
33
34
35
36
37
38
39
40
41
42
43

44 **Subjects and Methods**

45 *Study participants*

46
47
48
49
50 The Vel002 study (Australian and New Zealand Clinical Trials Registry ID:
51 ACTRN12611001200976) recruited patients in four centers in Melbourne, Australia, who
52 were diagnosed with probable AD according to NINCDS-ADRDA criteria [21]. Eligible
53
54
55
56
57
58
59
60
61
62
63
64
65

1 subjects were ≥ 55 years old; presented with a modified Hachinski score ≤ 4 and a ‘mild’ to
2 ‘moderate’ degree of dementia, as defined by a Mini-Mental Status Examination (MMSE)
3 score of between 14 and 26 at screening; were under treatment with an acetylcholine esterase
4 inhibitor at a stable dose for at least four months; and had a documented volumetric MRI
5 brain scan performed within 14 days of baseline that revealed no gross structural abnormality.
6
7 Exclusion criteria were: contraindication for lumbar puncture; history of alcohol and/or other
8 substance abuse; known sensitivity to selenium; presence of any other dementia syndrome or
9 other neurological or psychiatric illness; significant medical disease not adequately
10 controlled; history of epilepsy, diabetes, impaired renal, hepatic, or hematological function;
11 known history of familial AD; current or recent (within six weeks of screening) treatment
12 with lithium, NMDA receptor antagonists, steroids, or injectable non-steroidal anti-
13 inflammatory drugs; current treatment with carbamazepine, digoxin, phenobarbitone,
14 phenytoin, or warfarin; and consumption of dietary supplements containing more than 26 μg
15 selenium/day [20].
16
17
18
19
20
21
22
23
24
25
26
27
28
29
30
31
32
33
34

35 Informed consent was obtained before the interview from all participants or their legally
36 authorized representative, and the participant’s caregiver. The study was approved by the
37 Melbourne Health Institutional Ethics Committee.
38
39
40
41
42
43
44

45 *Study protocol*

46
47
48
49

50 Full details of the trial protocol can be found in Malpas *et al.* [20]. This was a double-blind,
51 randomized, placebo-controlled pilot study. An initial screening visit was performed to
52 confirm AD diagnosis by an experienced clinical neurologist or neuropsychiatrist. Following
53 screening, 40 participants were randomly assigned to one of three study groups for 24 weeks’
54 treatment: placebo, ‘nutritional’ (0.32 mg of sodium selenate, three times per day); and
55
56
57
58
59
60
61
62
63
64
65

1 'supranutritional' (10 mg of sodium selenate, three times daily). The randomization sequence
2 was a 1:1:2 ratio, and this sample size was determined based on the early stage of
3 investigation, i.e. Stage IIa as reported by Malpas *et al.* [20]. All investigators, participants,
4 and caregivers remained blinded to randomization status until the conclusion of the trial [20].
5
6 A total of 36 participants completed the study. The participant CONSORT flow chart is
7
8 shown in Fig 1. A list of the biofluid samples for this study is provided in Supplementary
9
10
11
12
13 Table 1.

14 *Determination of total selenium concentration in serum and CSF*

15
16
17
18
19
20
21
22
23 Selenium concentration in serum and CSF was measured using inductively coupled plasma-
24 mass spectrometry (ICP-MS). Neat serum and CSF were diluted in 1% nitric acid (1:20 and
25 1:3 respectively, to 300 μ L final volume). Selenium was measured on mass at $m/z = 78$ (^{78}Se ;
26 natural abundance = 23.8%) using an Agilent Technologies 7700x ICP-MS system (Agilent
27 Technologies, Australia) fitted with 'cs' lenses and platinum cones. Hydrogen (4 mL/min)
28 was used as a reaction gas to remove polyatomic interferences at $m/z = 78$. Values were the
29 average of four technical replicates. Selenium concentrations were calculated by external
30 calibration using multi-element standards (AccuStandard, USA) containing of 0, 0.1, 0.5, 1, 5,
31 10, 50, 100 μ g/L of selenium. An internal standard solution containing 200 μ g/L of yttrium
32 (^{89}Y) was introduced online *via* a Teflon T-piece. Analytical validity was assessed using
33 reconstituted lyophilized SeronormTM Trace Elements in Serum (Sero AS, Norway) standard
34 reference materials, which was prepared using the same protocol for serum samples. The
35 measured analytical recovery of selenium in the SeronormTM standard was within the
36 acceptable range, per manufacturer's guidelines (measured serum = 153.89 ± 6.48 μ g/L, $n =$
37 4; certified range = 95–176 μ g/L).
38
39
40
41
42
43
44
45
46
47
48
49
50
51
52
53
54
55
56
57
58
59
60
61
62
63
64
65

Chromatographic analysis of selenoproteins

1
2
3 Frozen aliquots of serum and CSF samples from the supranutritional group (baseline and 24
4 weeks) were brought to 4 °C and transferred into standard glass chromatography vials with
5 polypropylene low-volume inserts. A 20 µL injection of neat serum/CSF was resolved using a
6 BioSEC3 150 Å, 4.6 x 300 mm size exclusion chromatography (SEC) column (Agilent
7 Technologies) with a molecular weight range of 500 to 150,000 Daltons (Da) on an Agilent
8 Technologies 1200 Series liquid chromatography (LC) system equipped with a Peltier-cooled
9 (4 °C) autosampler. A 200 mM ammonium nitrate buffer containing 10 µg/L cesium and
10 antimony as online internal standards (see Lothian and Roberts [22]) was adjusted to pH 7.5-
11 7.7 with 28% ammonium hydroxide and used as the isocratic mobile phase (0.4 mL/min flow
12 rate) for all separations. The column was calibrated for molecular mass estimation using a
13 standard mix of heteroatom and metal-containing proteins [23], and injections of sodium
14 selenate (1.88 ppb) prepared in the chromatography buffer were used to estimate selenate
15 retention time in serum and CSF samples. Selenium was measured with the same instrument
16 configuration described above. The size exclusion chromatography (SEC) eluent was directly
17 connected to the concentric nebulizer (Glass Expansion, Australia) of the ICP-MS *via*
18 polyethyl ether ketone tubing. The LC and ICP-MS systems were controlled using Mass
19 Hunter (Agilent Technologies) and all SEC-ICP-MS chromatographic traces were measured
20 in time resolved analysis mode.
21
22
23
24
25
26
27
28
29
30
31
32
33
34
35
36
37
38
39
40
41
42
43
44
45
46
47
48

Cognitive testing

49
50
51
52
53
54 Cognitive testing was performed at baseline and week 24. Conventional ‘pencil-and-paper’
55 tests were administered, including the Alzheimer’s Disease Assessment Scale cognitive
56 subscale (ADAS-Cog), MMSE, controlled oral word association test (COWAT), and the
57
58
59
60
61
62
63
64
65

category fluency test (CFT). Three tests were also administered from the CogState computerized battery (CogState Ltd, Melbourne, Australia). These included the one-card learning memory task (OCL), identification reaction time task (IDN), and the detection reaction time task (DET).

Statistical analysis

All statistical analyses were conducted on the intention to treat population. Data were included for all participants enrolled in the study who had complete data for this exploratory analysis. Baseline characteristics were compared between groups using ANOVA for continuous data and using Fisher's exact test when data were categorical. Longitudinal changes were assessed by Wilcoxon Signed Rank or paired Student's *t* tests. Correlation analyses were performed using Pearson's correlation coefficient or Spearman's rho, depending on the presence or absence of normal data distribution as assessed by Kolmogorov-Smirnov. When correlation analysis was performed using change variables, log transformed data was included instead of raw numbers. For SEC-ICP-MS chromatograms, peaks areas were derived using the standard width-at-half-height method in Prism Version 6h (GraphPad, USA), and compared against peaks with corresponding molecular mass using a paired Student's *t*-test.

Changes in selenium biomarkers (*i.e.* total selenium and chromatographically-separated selenoproteins) and cognitive tests were calculated as the difference between values at 24 weeks and baseline. Participants were classified as responsive or non-responsive to selenate treatment according to the difference in measured indicators of selenium status, with the responsive group presenting an increment in serum or CSF post treatment at least three times above the highest value at baseline. Comparisons between responsive and non-responsive

groups were performed using a Mann-Whitney *U* test. The Kruskal-Wallis followed by Dunn's post hoc test was conducted on the comparison of the changes in selenium levels in CSF normalized by change in serum in the three treatment groups. All statistical analyses were carried out using the Statistical Package for the Social Sciences software, version 22.0 (SPSS; IBM, USA), and figures were constructed in Prism version 6h (GraphPad, USA) and Adobe Illustrator CC 2018 (Adobe Systems, USA). Statistical significance was set at $p < 0.05$.

Results

Studied groups were similar for age, sex, MMSE score, and *APOE* $\epsilon 4$ allele frequency (Table 1), as well as for selenium biomarkers (Table 2). All but one participant were selenium sufficient at baseline according to the plasma selenium reference range of 84-100 $\mu\text{g/L}$ recommended by Thomson [24] required to maintain adequate glutathione peroxidase (GPx) activity and selenoprotein P levels (Table 2). Both experimental groups receiving sodium selenate treatment showed significant increases in selenium concentration in serum (nutritional +45%, $p < 0.01$, Student's *t* test; supranutritional +504%, $p < 0.001$, Wilcoxon Signed Rank test) and CSF (nutritional +69.3%, $p < 0.05$; supranutritional +1680%, $p < 0.001$, Student's *t* test; Table 2; Fig 2) from baseline. One individual in the nutritional group had unchanged serum selenium concentrations and decreased levels in CSF, which we believe was due to poor compliance with treatment regime. As expected, there was a dose-dependent effect on serum selenium concentration, with the magnitude of change in serum selenium concentration in the supranutritional group showing an approximately ten-fold increase in serum concentration compared to the nutritional group at the study conclusion. CSF selenium was only moderately increased by nutritional supplementation (+56%, $p < 0.05$ vs baseline),

whereas supranutritional intake produced a more marked change (+1395%, $p < 0.001$ vs baseline) with high variance between participants.

As CSF represents the main export pathway from the brain, increased selenium concentration is indicative that more has entered the CNS. We therefore examined the correlation between serum and CSF selenium concentration to assess the neuro-bioavailability of selenate. At baseline, no correlation was observed between serum and CSF concentration (Fig 3A). Post-treatment, there was also no correlation between serum and CSF selenium concentrations for either the placebo or nutritional groups, although these sample sizes were small (Fig 3B, C). Post-treatment, only the high-dose supranutritional group showed a correlation between serum and CSF selenium ($r = 0.653$, $p < 0.05$, Spearman's rho; Fig 3D). We examined whether the dimension of the change in CSF selenium content after 24 weeks' treatment was commensurate with the change in serum selenium content in our three treatment groups. We analysed the change in serum selenium matched to the change in CSF selenium in subjects where both samples were available and assayed at baseline and 24 weeks of treatment. The mean changes in each group indicated that the boost in serum selenium following supplementation was matched by a muted increase in CSF selenium. Of the increase in serum selenium in the two supplementation group, only $\approx 3\%$ of the increase was transduced into the CSF (Fig. 3E). The change in CSF selenium was approximately proportional to the change in serum in both the nutritional and the supranutritional selenate supplementation groups. In the supranutritional group, the increase in CSF selenium as a proportion of the change in serum selenium was significantly more than in the placebo group (Fig. 3F, $\approx 3\%$, Dunn's test $p = 0.0019$), consistent with a small proportion of the boost in serum selenium surmounting the blood brain barrier with this high dosage regimen.

1 According to the original trial data reported [20], the diffusion tensor imaging (DTI) analysis
2 revealed that the supranutritional group had less of a reduction in white matter organization,
3 evidenced by decreased mean, axial and radial diffusivity. This may suggest a measurable
4 clinical benefit, as sodium selenate may have a direct effect on slowing white matter atrophy
5 in the human brain. We analysed subsets of serum and CSF ($n = 11$, samples with sufficient
6 volume left after other measurements) from the supranutritional-dose group by SEC-ICP-MS
7 to assess treatment-induced changes in selenium-containing macromolecules and low
8 molecular weight inorganic selenium species. **Selenate supplementation clearly increased**
9 **binding of selenium into serum proteins (Fig 4A), with a large increase (+656%; $p < 0.001$,**
10 **Student's t -test) in the earliest eluting peak (Peak #1, Fig. 4A). We have previously**
11 **characterized the selenium content in this peak by SEC-ICP-MS and MS/MS bottom up**
12 **proteomics, and confirmed the presence of both selenoprotein P (comprising $\approx 50\%$ of this**
13 **peak) and albumin that could not be discriminated by chromatography at this resolution [25].**
14 **Selenoprotein P has a molecular mass of 43 kDa, but is highly glycosylated. The molecular**
15 **mass of albumin is 67 kDa, and Peak #1 has an apparent M_r of 75 kDa against size standards.**
16 **Using this approach, we cannot discriminate between selenium incorporated as selenocysteine**
17 **and that being transported *via* transient binding to free thiol groups on serum albumin [26].**
18 **Chemically inert buffers at physiological pH used for SEC-ICP-MS preserve the integrity of**
19 **selenium thiol ligands, with the compromise being relatively low separation efficiency [27].**
20 **As such, we suspect that Peak #1 contains highly-abundant serum albumin followed closely**
21 **(without resolution) by selenoprotein P. Differentiating the proportional increase in selenium**
22 **directly attributable to both proteins would require higher resolution chromatographic**
23 **methods [28], though the effects of the denaturing conditions typically employed on albumin-**
24 **selenium binding have not been characterized.**

Two additional resolved peaks were also significantly increased ($p < 0.001$, Student's t -test) in serum from the supranutritional group, representing inorganic selenate and an unidentified selenium-containing compound, both eluting below the lower molecular weight limit of the SEC column. Interactions between the silica column and negatively charged inorganic selenium compounds are known to influence retention time in SEC-ICP-MS [29], thus we suspect that the peak following the selenate standard (serum Peak #3, CSF Peak #4, Fig 4) might be selenite (SeO_3^{2-}). A previous analytical study of the stability of selenocompounds in human serum suggested selenite is not present in freshly-drawn serum and is an artifact of storage, but the report examined serum from only two donors, with total serum selenium at levels not commensurate with our supranutritional group [30]. Regardless of its chemical species, the appearance of this selenium-containing peak at 24-weeks is indicative of a specific response to supranutritional selenium supplementation.

In CSF samples, we again identified a marked increase in the low mass peaks, selenate (Peak #3 provisionally, +29.7%, $p < 0.001$) plus selenite (suspected for Peak #4), following supranutritional supplementation. The lower total selenium concentration in CSF reduced the effect of peak tailing, allowing selenoprotein P (likely to be Peak #2), which we have previously confirmed in CSF samples using a targeted proteomics approach [25], to be resolved from albumin (likely to be Peak #1), which is also present in CSF [31]. Selenium bound to albumin was markedly increased in the supranutritional group (Peak #1 in Fig 4B, +3022%, $p < 0.001$), as was the selenoprotein P peak following selenate treatment (Peak #2 in Fig 4B, $p < 0.001$; Table 3). Both selenium-binding proteins were below the limit of detection in untreated CSF, consistent with previous findings [32]. It was also apparent from the ratios of the selenium in the chromatographic protein peaks to the low mass peaks (Table 3), that selenate supplementation boosted selenoprotein production far more in the periphery (serum, Fig 4A) than in the brain (CSF, Fig 4B). Thus, to augment brain levels of selenoprotein P

(and potentially other selenoproteins) may require higher levels of selenate precursor than peripheral organs.

In both the nutritional and supranutritional groups there was considerable variance in the response in serum and CSF selenium concentration to selenium supplementation. By stratifying the data into responsive (defined as change in serum and CSF three times above the highest baseline value) or non-responsive (all remaining samples), regardless of dose, we were able to reassess the effects of selenate supplementation in cognitive performance *per* the original trial outcomes report [20]. For the MMSE readout, according to the CSF marker, the unresponsive group deteriorated during the trial by -3.1 ± 3.5 points ($p < 0.0049$; paired Student's *t* test), but the responsive group did not significantly deteriorate (-0.4 ± 3.0 points; $p = 0.646$; paired Student's *t* test), with paired analysis indicating that the difference between these two groups was significant ($p = 0.03$; Mann-Whitney *U* test; Fig 5A). No differences were observed in any other measures of cognition (Fig 5B-G). Pooled CSF selenium concentration from all groups correlated with change in MMSE performance ($r = 0.403$; $p < 0.05$, Spearman's rho; Fig 5H), indicating that change in CSF selenium may be associated with improved cognitive performance following supplementation.

Treatment emergent adverse events (TEAEs) were reported previously according to treatment group, with 90% reporting at least one TEAE [20]. To summarize, all TEAEs were reported as mild. The most common solicited TEAEs (incidence $\geq 20\%$ in both placebo/nutritional and supranutritional groups) were fatigue, headache, and lethargy; with nausea, muscle spasms, and dizziness reported in the supranutritional group. One participant experienced a pre-syncopal serious adverse event that was resolved in 24 hours and continued in the study. Two supranutritional group participants withdrew due to TEAEs; one due to appearance of a skin rash of uncertain cause, and the other resulting from dysmorphic changes in toenails and

1 fingernails. In the latter case, the participant had the 24-week observation and was not
2 excluded from further analysis. On application of our responsive/non-responsive
3 stratification, no relationship between the number of TEAEs and level of selenium uptake was
4 observed ($p = 0.976$ for serum; $p = 0.900$ for CSF; Fisher's exact test).
5
6
7
8
9

10 **Discussion**

11
12 While the readouts of this pilot study of selenate supplementation in AD reported no
13 significant benefit on cognitive performance [20], there was no stratification by biofluid
14 selenium biomarkers in the initial report. Here, we find that the retention of selenium in serum
15 and CSF was highly variable in this study. When the participants were stratified according to
16 response in biofluid to the selenate supplementation, a significant arrest in cognitive
17 deterioration on MMSE was noted. This was not corroborated by the other performance tests
18 used. However, this pilot study was underpowered to detect cognitive changes. Our findings
19 inform future trial design of selenium supplementation, supporting stratification of outcome
20 measures by biofluid selenium changes.
21
22
23
24
25
26
27
28
29
30
31
32
33
34
35
36
37
38
39

40 Due to concern about the potential toxicity of inorganic selenium [33], intervention studies
41 have tended to focus on organic compounds. For instance, a double-blind, randomized,
42 placebo-controlled trial of selenium-enriched yeast supplementation [34], which contained
43 SeMet at 54-60% of the total selenium (including inorganic species) found that a dose of 300
44 μg of selenium-enriched yeast per day over five years was well tolerated by older adults
45 (mean age 66.1 years) during the 5 years of dosing. However, at a 10 year follow-up, this
46 dose group exhibited increased all-cause of mortality (hazard ratio = 1.59, 95% CI = 1.02-
47 2.46), especially for those who had baseline plasma selenium $\geq 82 \mu\text{g/L}$ (hazard ratio = 2.20,
48 95% CI = 1.16-4.17) [35]. While such studies do raise concerns regarding the possible long-
49
50
51
52
53
54
55
56
57
58
59
60
61
62
63
64
65

1 term toxic effects of the dose used in our trial (equivalent to 12.5 mg of elemental selenium
2 per day, much higher than Rayman *et al.* [35]), our six month intervention did not report any
3 life-threatening TEAEs. In contrast to this long-term supplementation study of healthy adults,
4 we tested high dose selenate treatment as a chemotherapeutic disease-modification
5 intervention.
6
7
8
9

10
11
12 While significantly more subjects in the Supranutritional group (35%) experienced TEAEs
13 compared to the placebo group (10%) [20], the adverse effect profile was similar to that
14 associated with toxicity resulting from consumption of a misformulated nutritional
15 supplement in the US in the late 2000s that contained selenium at ≈ 400 -fold the
16 recommended daily allowance (RDA) [36, 37]. In this incident, an unknown number of
17 consumers inadvertently received a daily selenium dose in the order of 30 mg equivalent, as
18 well as ≈ 30 mg of chromium and other substances. We note that the misformulated
19 supplement exposed subjects to an average of ≈ 30 mg of elemental selenium per day. The
20 highest dose we tested was 30 mg of sodium selenate per day in divided doses, which is
21 equivalent to 12.5 mg of elemental selenium per day, i.e. less than half the dose of selenium
22 in the misformulated supplement. Furthermore, the chromium in the misformulated
23 supplement (17-fold the RDA), as well as many other bioactive ingredients in the mixture,
24 may have potentiated the toxicological burden. In any case, since our trial of sodium selenate
25 at 30 mg per day was completed under controlled conditions, the data are important to
26 examine whether this drug can be used safely in this disease context. Our observations that 30
27 mg of sodium selenate per day for 24 weeks, being less than half that of the misformulated
28 supplement, without serious adverse events is reassuring for the use of this dose as a
29 chemotherapeutic, where the benefits may exceed the risk of mild TEAEs.
30
31
32
33
34
35
36
37
38
39
40
41
42
43
44
45
46
47
48
49
50
51
52
53
54
55
56
57
58
59
60
61
62
63
64
65

1 Our data indicate that selenate supplementation promotes protein incorporation, supporting
2 the possibility that inorganic selenium toxicity in the brain is mitigated by endogenous
3 selenoprotein production [38]. Furthermore, it has been shown that while both SeMet and
4 selenate are readily bioavailable (both > 90%), the half-life of selenate is considerably shorter
5 [39]. It has been suggested that the dose-response for selenium intake and benefits to human
6 health follows a U-shaped relationship, indicating that selenium supplementation to
7 populations with adequate or high selenium status could cause adverse effects [40]. Further
8 studies to clarify risk-benefit profiles for different selenocompounds are needed, particularly
9 when being used as a treatment for a terminal condition such as AD.
10
11
12
13
14
15
16
17
18
19
20
21
22

23 To our knowledge, this is the first study to determine selenium concentration in paired serum
24 and CSF samples before and after supplementation, which allowed us to evaluate the
25 bioavailability of sodium selenate to the CNS and its ability to promote selenoprotein
26 synthesis. Following supplementation, the distribution of selenium into selenoproteins as a
27 proportion of total selenium in the biofluid was much greater for serum than for CSF (Fig 4),
28 which confirms that the blood brain barrier may limit the entry of selenium into the brain.
29
30
31
32
33
34
35
36
37
38
39

40 Our findings that small molecular weight selenium species are the dominant forms in the CSF
41 are at variance with those of Solovyev *et al.* [32], who found selenoprotein P was the major
42 selenocompound in CSF of healthy individuals, followed by selenomethionine bound to
43 albumin. Both Solovyev and colleagues' study and the present work used archived frozen
44 samples, thus the discrepancy between the studies is unlikely to be due to selenite artifact
45 from storage [30].
46
47
48
49
50
51
52
53
54
55
56

57 Our observations are consistent with two potential fates for sodium selenate: i) reduction to
58 selenite, according to a pathway previously identified in the gut [41]; and ii) direct
59
60
61
62
63
64
65

incorporation into selenoproteins that cross the blood-brain barrier, which would support efficiency of this compound in promoting antioxidant activity in the CNS. While selenoprotein P is the master regulator of selenium delivery to the CNS [42], glutathione peroxidase 4 (GPx4) is the most abundant selenoprotein in brain, and has recently garnered attention as an important regulator of ferroptosis [43], a newly identified form of iron-dependent programmed cell death that causes aggressive lipid peroxidation [44, 45] thought to play a major role in AD pathology [46]. **Since AD affected brain tissue has lower levels of selenium [10, 6] and selenium supplementation has been shown to directly interdict amyloid and iron neurotoxicity by modulating GPx activity [47], GPx4 expression and activity may suffer from insufficient selenium supply, and on this basis supplementation trials are worth exploring.**

Conclusions

This pilot trial showed that sodium selenate supplementation at a high or supranutritional dose induced an increase in selenium uptake into the CNS. The elevation in CSF selenium induced by treatment varied considerably among participants, indicating that factors, such as genetics, influence selenium delivery to the brain. Analysis of selenoproteins in CSF suggested inorganic selenium could increase expression and incorporation of selenium into biomolecules. When stratifying the study groups as either responsive or non-responsive to selenate supplementation, we found subtle but significant, improvement in MMSE score was associated with selenium CSF. Although 24 weeks of treatment was well tolerated, the potential benefits of selenium supplementation for AD must be weighed against recent data reporting increased mortality in healthy elderly subjects after long term supplementation.

Acknowledgements

1
2
3 The Florey Institute of Neuroscience and Mental Health wishes to acknowledge the Victorian
4
5 Government's Operational Infrastructure Support Program, as well as the assistance of the
6
7 Cooperative Research Centre for Mental Health and the Neuroproteomics Facility.
8
9

Sources of Support

10
11
12
13
14
15
16
17
18 Funded by Fellowships from the Brazilian Government Science Without Borders program
19
20 (Ciência sem Fronteiras; BRC), Deakin University (BRC), and the Australian National Health
21
22 and Medical Research Council (GNT1138673, BRR; GNT1105784, SC; GNT1122981, DJH;
23
24 GNT1103703, AIB); a Program Grant from the Australian National Health and Medical
25
26 Research Council (GNT1132604, AIB); and by Velacor Therapeutics. Agilent Technologies
27
28 provided material and research support (BRR, DJH).
29
30
31
32
33
34
35
36
37
38
39
40
41
42
43
44
45
46
47
48
49
50
51
52
53
54
55
56
57
58
59
60
61
62
63
64
65

Figure legends

Fig 1 Participant CONSORT flow chart. “Analyzed” refers to subjects who completed the protocol, where cognitive testing was completed at baseline and week 24, and where at least one biofluid sample was measured for selenium content.

Fig 2 Selenium concentrations in serum (A, B and C) and cerebrospinal fluid (D, E and F) at baseline and after 24 weeks. A and D: Placebo; B and E: Nutritional group; E and F: Supranutritional group. A, B, D, E, F: Student’s paired *t*-test; C: Wilcoxon Signed Rank test. * $p < 0.05$; *** $p < 0.001$.

Fig 3 Correlation between selenium concentration in serum and CSF. A) Baseline ($n = 32$). B) Placebo group, post treatment ($n = 6$). C) Nutritional group, post treatment ($n = 7$). D) Supranutritional group, post treatment ($n = 14$). E) **Changes in serum selenium (x axis) and CSF selenium (y axis) in matched subjects (where both serum and CSF samples were available and assayed at both baseline and 24 weeks of treatment). Data are means \pm SD, $n = 6, 7$ and 13 for placebo, nutritional and supranutritional groups, respectively. The axes are in log units to capture the large shifts in values as the doses are increased. F) Individual data points from each subject (with box and whisker analysis) expressed as the change in CSF selenium per unit change in serum selenium for each matched subject. The supranutritional group exhibited a small boost in CSF selenium when normalized to the change in serum selenium ($\approx +3\%$, or ≈ 30 mg/g). P value is from Dunn’s multicomparison’s test.**

Fig 4 Selenium trace of supranutritional group samples at baseline (blue) and post treatment (red) on LC-ICP-MS. Dashed line = sodium selenate (1.88 ppb). Selenium-containing peaks identified based on mass alone and should be considered approximations. A) Serum: Peak #1:

co-eluting albumin-associated selenium and selenoprotein P; Peak #2: selenate; Peak #3:

inorganic selenium; B) CSF: Peak #1: albumin-associated selenium; Peak #2: selenoprotein P;

Peaks #3 and #4: inorganic selenium. Data are average \pm SEM, $n = 11$ matched serum or CSF

samples from the same subjects; *** $p < 0.001$, Student's t -test of area under curve.

Fig 5 Cognitive performance changes in subjects categorized as either responsive or non-responsive to sodium selenate treatment, according to serum ($n = 17$ and 18 for responsive and non-responsive, respectively) and CSF ($n = 12$ and 14 for responsive and non-responsive, respectively) changes. Changes (Δ) were calculated as [post-treatment – baseline] scores. A) MMSE: Mini-Mental State Examination (* $p < 0.005$, Mann-Whitney U test). B) ADAS-Cog: Alzheimer's Disease assessment scale - cognitive subscale. C) CFT: Category fluency test. D) COWAT: Controlled oral word association test. E) DET: Detection reaction time task. F) OCL: One-card learning memory task. G) IDN: Identification reaction time task. H) Correlation between changes in CSF selenium concentration and in MMSE score in combined responsive and non-responsive groups ($r = 0.403$; $p < 0.05$, Spearman's rho).

Table 1. Cohort characteristics at baseline.

Parameter	All (<i>n</i> = 36)	Placebo (<i>n</i> = 9)	Nutritional (<i>n</i> = 8)	Supranutritional (<i>n</i> = 19)	<i>p</i> value ^a
Age (y) ^b	70.2 ± 7.5	68.7 ± 6.9	73.4 ± 5.5	69.5 ± 8.3	0.316 ^c
Sex, % men	41.7	33.3	50.0	24.1	0.904 ^d
MMSE ^{b, e}	20.0 ± 3.7	20.3 ± 5.2	19.5 ± 2.4	20.0 ± 3.5	0.965 ^c
<i>APOE</i> ε4 ^e carriers, %	69.4	66.7	75.0	68.4	0.999 ^d

^a *p* value for between-group comparison; ^b Data presented as mean ± standard deviation; ^c

ANOVA; ^d Fisher's exact test; ^e *APOE* ε4, apolipoprotein E epsilon 4 allele carriers; MMSE, Mini-Mental Status Exam.

Table 2. Selenium concentrations in serum and CSF at baseline and after 24 weeks treatment with sodium selenate.

	Placebo				Nutritional				Supranutritional			
	t=0 w ^c		t=24 w		t=0 w		t=24 w		t=0 w		t=24 w	
	Mean ± SD ^c (n)	Mean ± SD (n)	Change (n)	<i>p</i> value	Mean ± SD (n)	Mean ± SD (n)	Change (n)	<i>p</i> value	Mean ± SD (n)	Mean ± SD (n)	Change (n)	<i>p</i> value
Serum selenium (µg/L)	135.8 ± 40.0 (9)	143.8 ± 34.3 (8)	-51.6, 51.3 (8)	0.996 ^a	122.2 ± 26.3 (8)	176.7 ± 46.2 (8)	20.3, 88.7 (8)	0.007 ^a	145.4 ± 28.8 (19)	858.3 ± 447.1 (19)	497.4, 928.3 (19)	<0.001 ^b
CSF ^c selenium (µg/L)	1.3 ± 0.4 (9)	1.4 ± 0.5 (7)	-0.4, 0.7 (7)	0.538 ^a	1.6 ± 0.6 (6)	2.5 ± 0.7 (7)	0.2, 1.6 (6)	0.026 ^a	1.4 ± 0.5 (17)	20.2 ± 9.1 (14)	13.4, 24.8 (13)	<0.001 ^b

^a Student paired test; ^b Wilcoxon Signed Rank test; ^c 95% CI, 95% confidence interval; CSF, cerebrospinal fluid; SD, standard deviation; w, weeks. A breakdown of the samples used for analysis is found in Supplementary Table 1.

Table 3: Relative changes in major selenium containing species in serum and CSF following supranutritional supplementation (as area under the curve of ^{78}Se signal intensity from SEC-ICP-MS chromatograms).

	Serum				CSF			
	t=0 w ^b	t=24 w	Change		t=0 w ^b	t=24 w	Change	
	Mean \pm SD ^b	Mean \pm SD	95% CI ^b	<i>p</i> value	Mean \pm SD ^b	Mean \pm SD	95% CI ^b	<i>p</i> value
	(n)	(n)	(n)		(n)	(n)	(n)	
Peak #1	1496 \pm 673.2 (11)	11316 \pm 5098 (11)	8563, 11077 (11)	<0.0001	4.4 \pm 9.5 (11)	137.4 \pm 42.9 (11)	113.8, 152.1 (11)	<0.0001 ^a
Peak #2	838.1 \pm 38.5 (11)	6211 \pm 674.2 (11)	5057, 5688 (11)	<0.0001	<LOD (11)	123.3 \pm 18.1 (11)	113, 136.1 (11)	<0.0001 ^a
Peak #3	672.6 \pm 48.8 (11)	6232 \pm 213.7 (11)	5403, 5716 (11)	<0.0001	1347 \pm 451.3 (11)	1748 \pm 678.8 (11)	253.9, 546.7 (11)	<0.0001 ^a
Peak #4	--	--	--	--	351.7 \pm 121.4 (11)	1551 \pm 339.6 (11)	1040, 1360 (11)	<0.0001 ^a

^a Student paired test; ^b 95% CI, 95% confidence interval; CSF, cerebrospinal fluid; SD, standard deviation; w, weeks.

References:

1. Schweizer U, Bräuer AU, Köhrle J, Nitsch R, Savaskan NE. Selenium and brain function: a poorly recognized liaison. *Brain Res Rev.* 2004;45(3):164-78.
2. Berr C, Balansard B, Arnaud J *et al.* Cognitive Decline Is Associated with Systemic Oxidative Stress: The EVA Study. *J Am Geriatr Soc.* 2000;48(10):1285-91.
3. Cardoso BR, Ong TP, Jacob-Filho W *et al.* Nutritional status of selenium in Alzheimer's disease patients. *Br J Nutr.* 2010;103(6):803-6.
4. Lin MT, Beal FM. Mitochondrial dysfunction and oxidative stress in neurodegenerative diseases. *Nature.* 2006;443(7113):787-95.
5. Barnham KJ, Masters CL, Bush AI. Neurodegenerative diseases and oxidative stress. *Nat Rev Drug Discov.* 2004;3(3):205-14.
6. Loef M, Schrauzer GN, Walach H. Selenium and Alzheimer's disease: a systematic review. *J Alzheimers Dis.* 2011;26:81-104.
7. da Silva S, Vellas B, Elemans S *et al.* Plasma nutrient status of patients with Alzheimer's disease: Systematic review and meta-analysis. *Alzheimers Dement.* 2014;10(4):485-502.
8. Gao S, Jin Y, Hall KS *et al.* Selenium level and cognitive function in rural elderly Chinese. *Am J Epidemiol.* 2007;165(8):955-65.
9. Reddy VS, Bukke S, Dutt N, Rana P, Pandey AK. A systematic review and meta-analysis of the circulatory, erythrocellular and CSF selenium levels in Alzheimer's disease: A metal meta-analysis (AMMA study-I). *J Trace Elem Med Biol.* 2017;42:68-75.

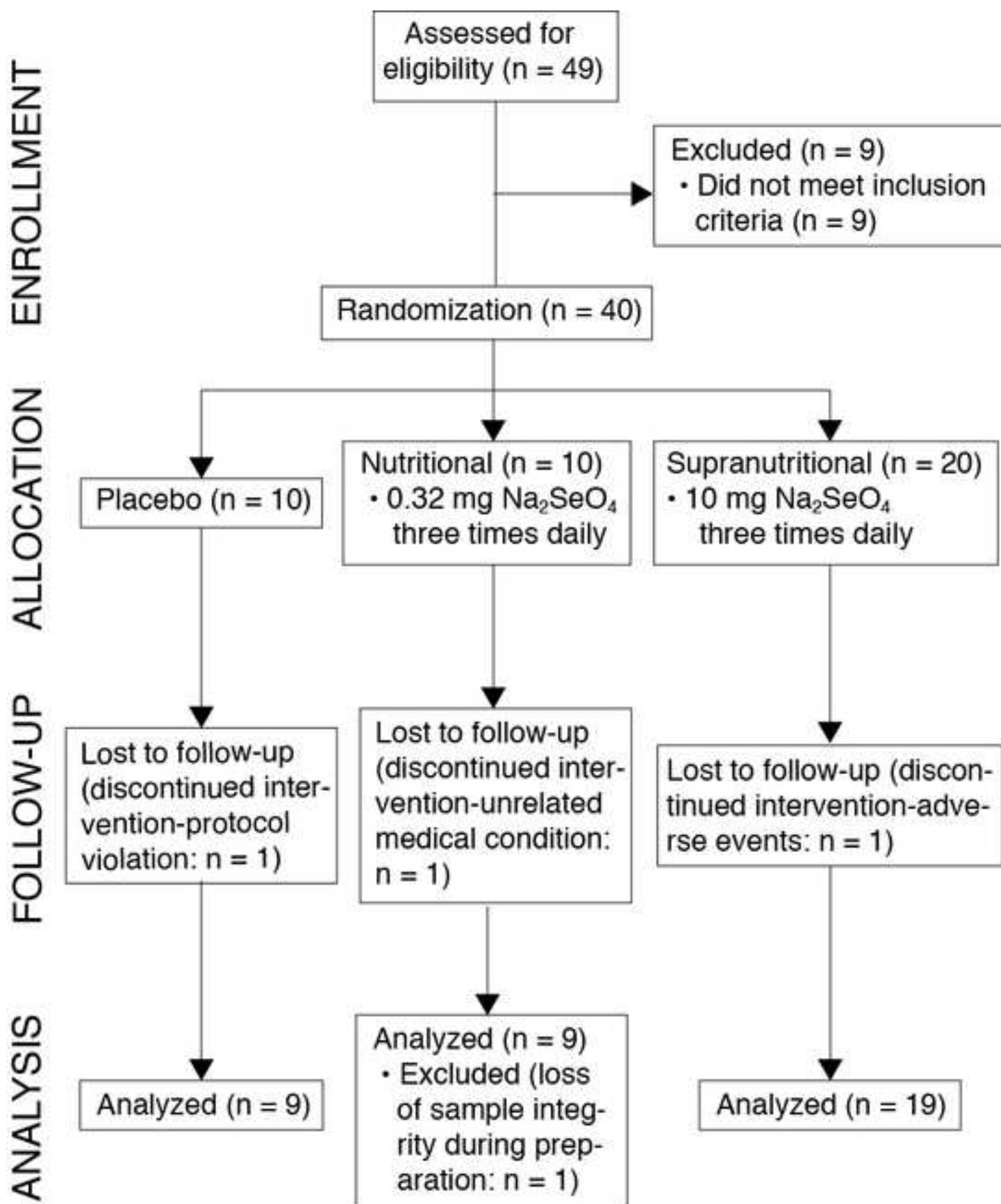
- 1
2
3
4
5
6
7
8
9
10
11
12
13
14
15
16
17
18
19
20
21
22
23
24
25
26
27
28
29
30
31
32
33
34
35
36
37
38
39
40
41
42
43
44
45
46
47
48
49
50
51
52
53
54
55
56
57
58
59
60
61
62
63
64
65
10. Cardoso BR, Hare DJ, Lind M *et al.* The APOE ϵ 4 Allele Is Associated with Lower Selenium Levels in the Brain: Implications for Alzheimer's Disease. ACS Chem Neurosci. 2017;8:1459-64.
 11. Portet F, Ousset PJ, Visser PJ *et al.* Mild cognitive impairment (MCI) in medical practice: a critical review of the concept and new diagnostic procedure. Report of the MCI Working Group of the European Consortium on Alzheimer's Disease. J Neurol Neurosurg Psychiatry. 2006;77(6):714-8.
 12. da Silva E, Mataveli L, Arruda M. Speciation analysis of selenium in plankton, Brazil nut and human urine samples by HPLC–ICP-MS. Talanta. 2013;110:53-7.
 13. Cardoso BR, Apolinario D, da Silva Bandeira V *et al.* Effects of Brazil nut consumption on selenium status and cognitive performance in older adults with mild cognitive impairment: a randomized controlled pilot trial. Eur J Nutr. 2016;55(1):107-16.
 14. Kryscio RJ, Abner EL, Caban-Holt A *et al.* Association of antioxidant supplement use and dementia in the prevention of alzheimer's disease by vitamin e and selenium trial (preadvise). JAMA Neurol. 2017;74(5):567-573.
 15. van Eersel J, Ke YD, Liu X *et al.* Sodium selenate mitigates tau pathology, neurodegeneration, and functional deficits in Alzheimer's disease models. Proc Natl Acad Sci USA. 2010;107(31):13888-93.
 16. Corcoran NM, Martin D, Hutter-Paier B *et al.* Sodium selenate specifically activates PP2A phosphatase, dephosphorylates tau and reverses memory deficits in an Alzheimer's disease model. J Clin Neurosci. 2010;17(8):1025-33.
 17. Shultz SR, Wright DK, Zheng P *et al.* Sodium selenate reduces hyperphosphorylated tau and improves outcomes after traumatic brain injury. Brain. 2015;138(Pt 5):1297-313.

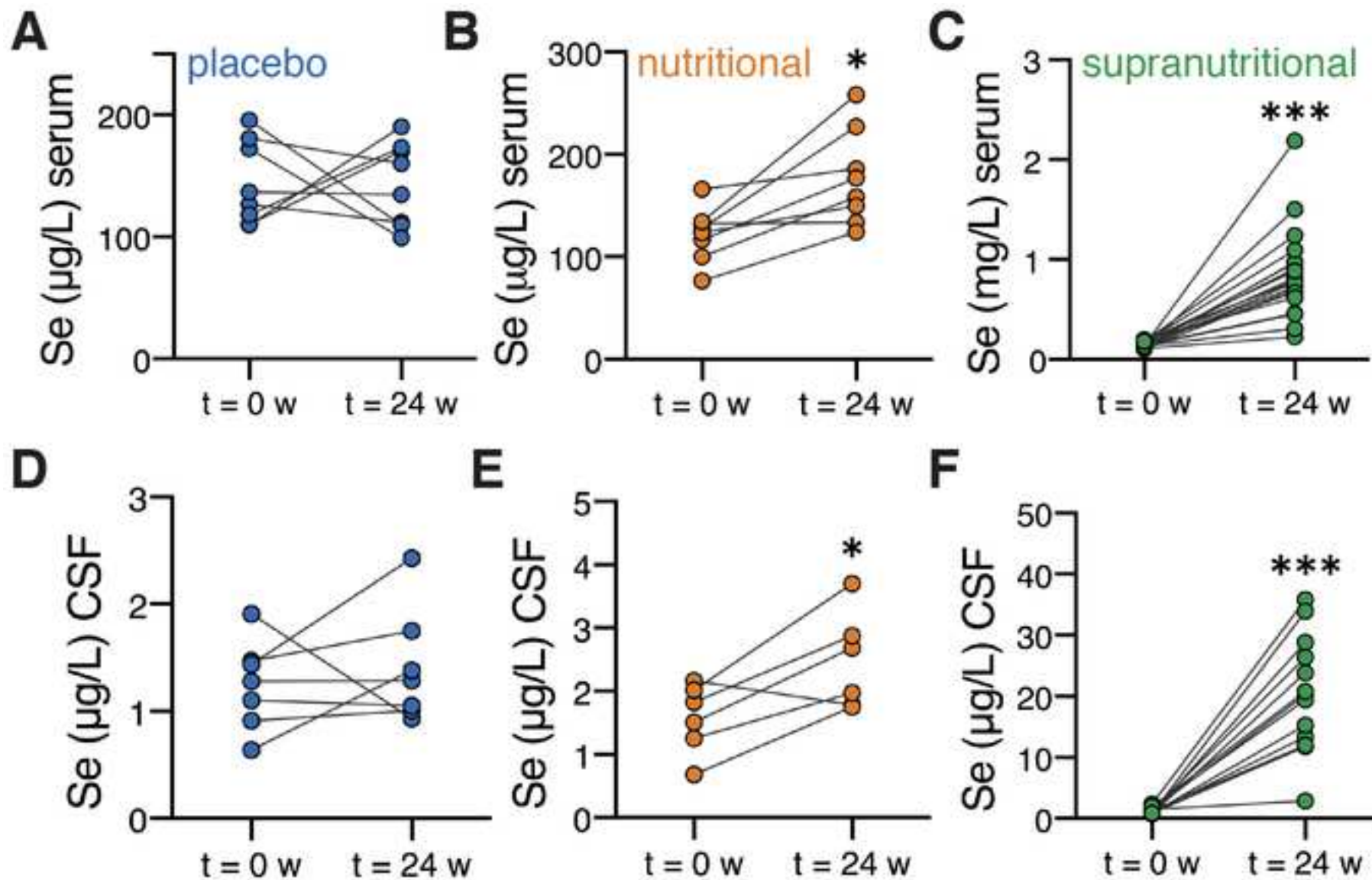
18. Jin N, Zhu H, Liang X *et al.* Sodium selenate activated Wnt/beta-catenin signaling and repressed amyloid-beta formation in a triple transgenic mouse model of Alzheimer's disease. *Exp Neurol.* 2017;297:36-49.
19. Lovell MA, Xiong S, Lyubartseva G, Markesbery WR. Organoselenium (Sel-Plex diet) decreases amyloid burden and RNA and DNA oxidative damage in APP/PS1 mice. *Free Radic Biol Med.* 2009;46(11):1527-33.
20. Malpas CB, Vivash L, Genc S *et al.* A Phase IIa Randomized Control Trial of VEL015 (Sodium Selenate) in Mild-Moderate Alzheimer's Disease. *J Alzheimers Dis.* 2016;54(1):223-32.
21. McKhann G, Drachman D, Folstein M *et al.* Clinical diagnosis of Alzheimer's disease: report of the NINCDS-ADRDA Work Group under the auspices of Department of Health and Human Services Task Force on Alzheimer's Disease. *Neurology.* 1984;34(7):939-44.
22. Lothian A, Roberts BR. Standards for Quantitative Metalloproteomic Analysis Using Size Exclusion ICP-MS. *J Vis Exp.* 2016;10.3791/53737(110):53737.
23. Hare DJ, Grubman A, Ryan TM *et al.* Profiling the iron, copper and zinc content in primary neuron and astrocyte cultures by rapid online quantitative size exclusion chromatography-inductively coupled plasma-mass spectrometry. *Metallomics.* 2013;5(12):1656-62.
24. Thomson CD. Assessment of requirements for selenium and adequacy of selenium status: a review. *Eur J Clin Nutr.* 2004;58(3):391-402.
25. Kipp AP, Strohm D, Brigelius-Flohé R *et al.* Revised reference values for selenium intake. *J Trace Elem Med Biol.* 2015;32:195-9.

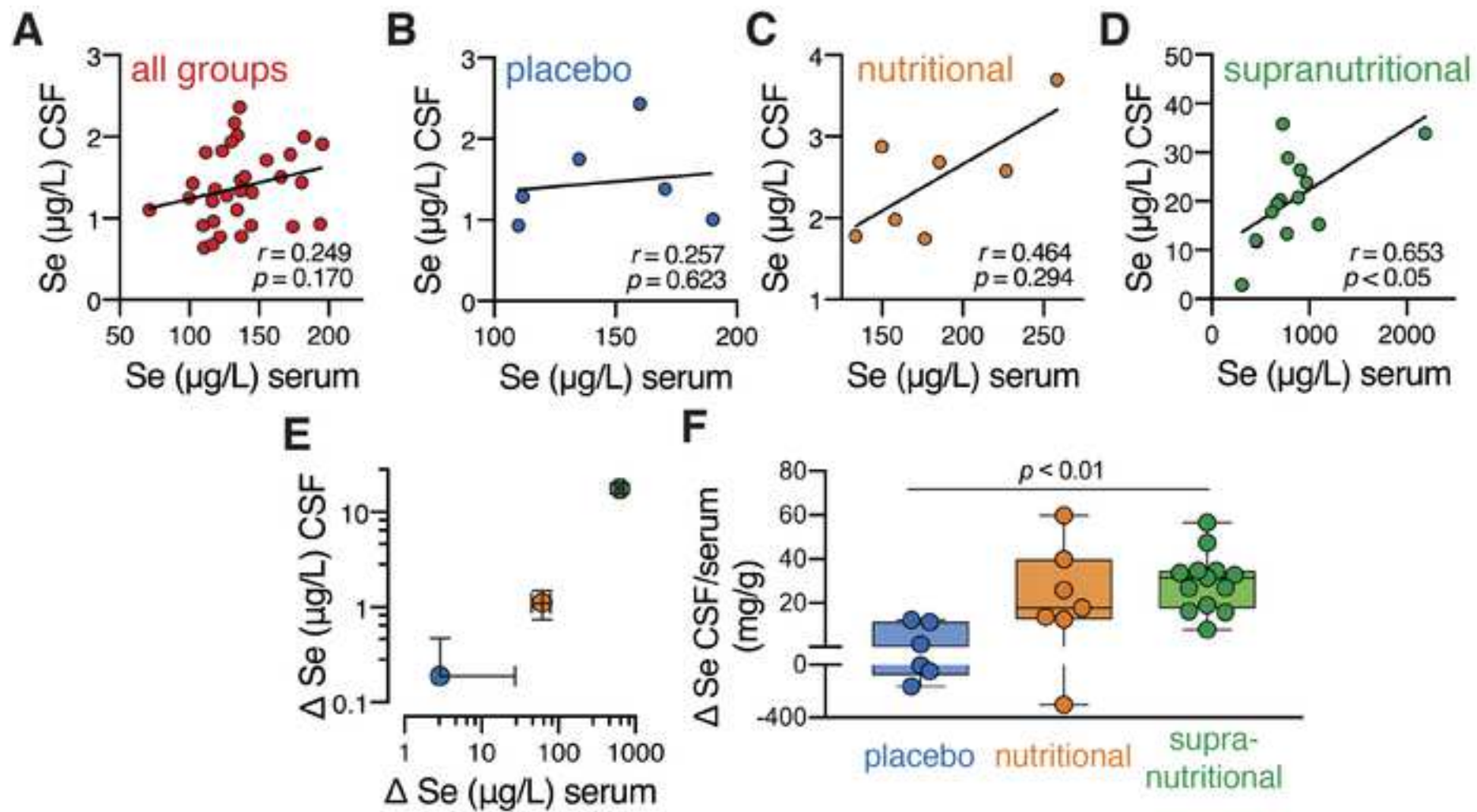
- 1
2
3
4
5
6
7
8
9
10
11
12
13
14
15
16
17
18
19
20
21
22
23
24
25
26
27
28
29
30
31
32
33
34
35
36
37
38
39
40
41
42
43
44
45
46
47
48
49
50
51
52
53
54
55
56
57
58
59
60
61
62
63
64
65
26. Xia Y, Hill KE, Li P *et al.* Optimization of selenoprotein P and other plasma selenium biomarkers for the assessment of the selenium nutritional requirement: a placebo-controlled, double-blind study of selenomethionine supplementation in selenium-deficient Chinese subjects. *Am J Clin Nutr.* 2010;92(3):525-31.
 27. Cardoso BR, Hare DJ, Bush AI *et al.* Selenium Levels in Serum, Red Blood Cells, and Cerebrospinal Fluid of Alzheimer's Disease Patients: A Report from the Australian Imaging, Biomarker & Lifestyle Flagship Study of Ageing (AIBL). *J Alzheimers Dis.* 2017;57(1):183-93.
 28. Haratake M, Hongoh M, Miyauchi M *et al.* Albumin-mediated selenium transfer by a selenotrisulfide relay mechanism. *Inorg Chem.* 2008;47(14):6273-80.
 29. Bishop DP, Hare DJ, Clases D, Doble PA. Applications of liquid chromatography-inductively coupled plasma-mass spectrometry in the biosciences: a tutorial review and recent developments. *TrAC Trends in Analytical Chemistry.* 2018;104:11-21.
 30. Delafiori J, Ring G, Furey A. Clinical applications of HPLC–ICP-MS element speciation: A review. *Talanta.* 2016;153:306-31.
 31. Onning G, Bergdahl IA. Fractionation of soluble selenium compounds from fish using size-exclusion chromatography with on-line detection by inductively coupled plasma mass spectrometry. *Analyst.* 1999;124(10):1435-8.
 32. Palacios Ò, Lobinski R. Investigation of the stability of selenoproteins during storage of human serum by size-exclusion LC–ICP-MS. *Talanta.* 2007;71(4):1813-6.
 33. Ganrot K, Laurell CB. Measurement of IgG and albumin content of cerebrospinal fluid, and its interpretation. *Clin Chem.* 1974;20(5):571-3.

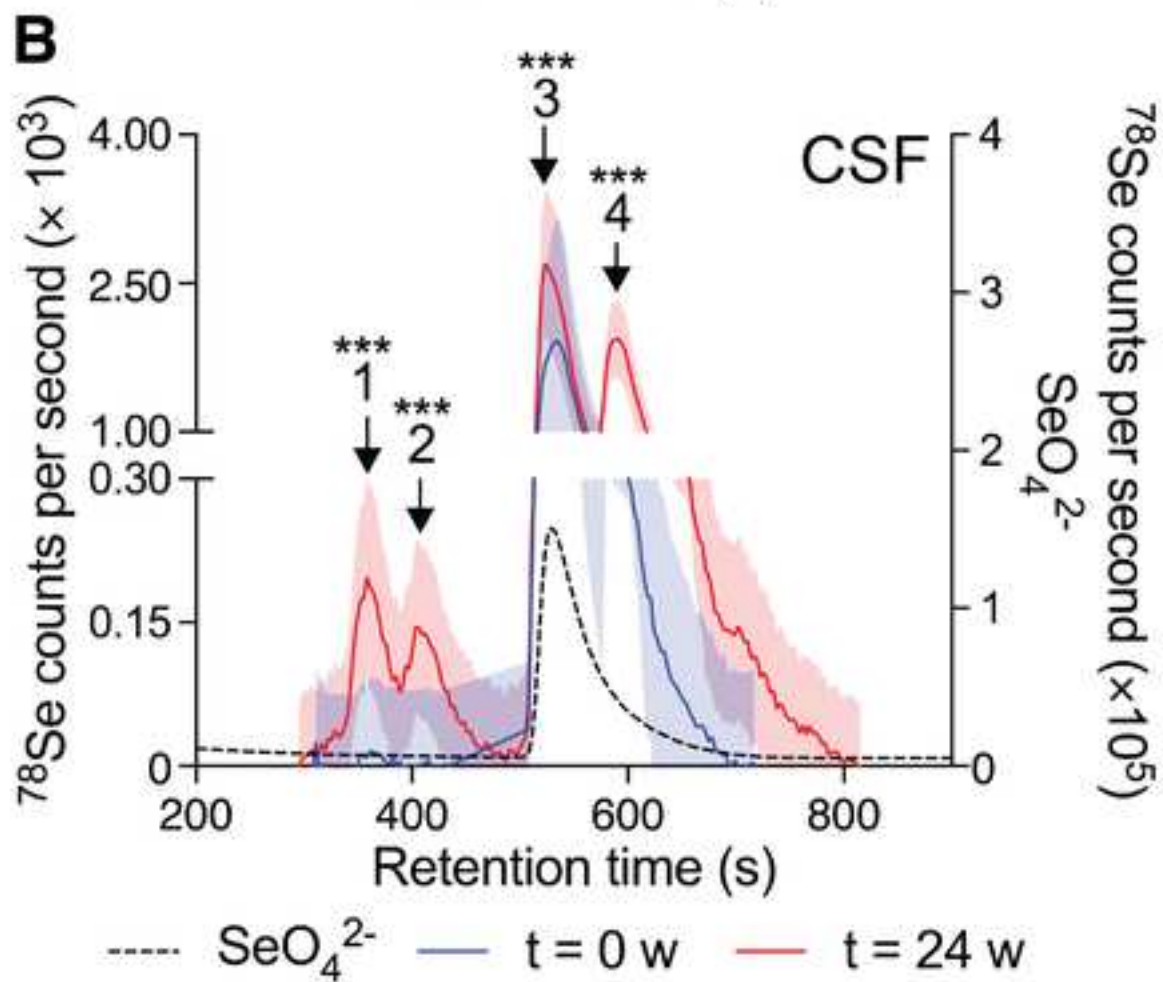
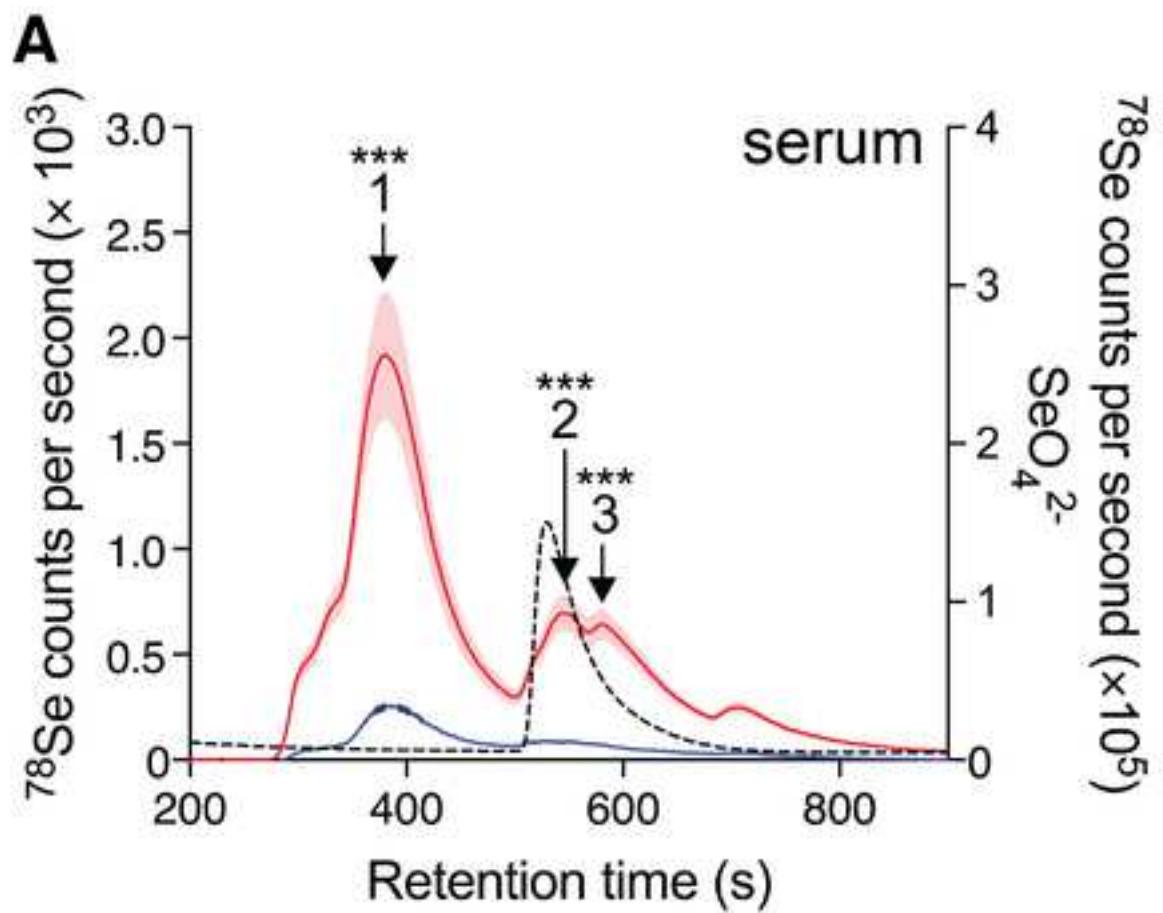
- 1
2
3
4
5
6
7
8
9
10
11
12
13
14
15
16
17
18
19
20
21
22
23
24
25
26
27
28
29
30
31
32
33
34
35
36
37
38
39
40
41
42
43
44
45
46
47
48
49
50
51
52
53
54
55
56
57
58
59
60
61
62
63
64
65
34. Solovyev N, Berthele A, Michalke B. Selenium speciation in paired serum and cerebrospinal fluid samples. *Anal Bioanal Chem.* 2013;405(6):1875-84.
35. Vinceti M, Mandrioli J, Borella P *et al.* Selenium neurotoxicity in humans: Bridging laboratory and epidemiologic studies. *Toxicol Lett.* 2014;230(2):295-303.
36. Cold F, Winther KH, Pastor-Barriuso R *et al.* Randomised controlled trial of the effect of long-term selenium supplementation on plasma cholesterol in an elderly Danish population. *Br J Nutr.* 2015;114(11):1807-18.
37. Rayman M, Winther KH, Pastor-Barriuso R *et al.* Effect of long-term selenium supplementation on mortality: results from a multiple-dose, RCT. The 11st International Symposium on Selenium in Biology and Medicine and The 5th International Conference on Selenium in the Environment and Human Health (Se2017); Stockholm 2017. p.p. 44. Abstract.
38. Morris J, Crane SB. Selenium Toxicity from a Misformulated Dietary Supplement, Adverse Health Effects, and the Temporal Response in the Nail Biologic Monitor. *Nutrients.* 2013;5(4):1024-57.
39. MacFarquhar JK, Broussard DL, Melstrom P *et al.* Acute selenium toxicity associated with a dietary supplement. *Arch Intern Med.* 2010;170(3):256-61.
40. Jäger T, Drexler H, Göen T. Human metabolism and renal excretion of selenium compounds after oral ingestion of sodium selenate dependent on trimethylselenium ion (TMSe) status. *Arch Toxicol.* 2016;90(1):149-58.
41. Rayman MP. Selenium and human health. *Lancet.* 2012;379(9822):1256-68.
42. Roman M, Jitaru P, Barbante C. Selenium biochemistry and its role for human health. *Metallomics.* 2014;6(1):25-54.

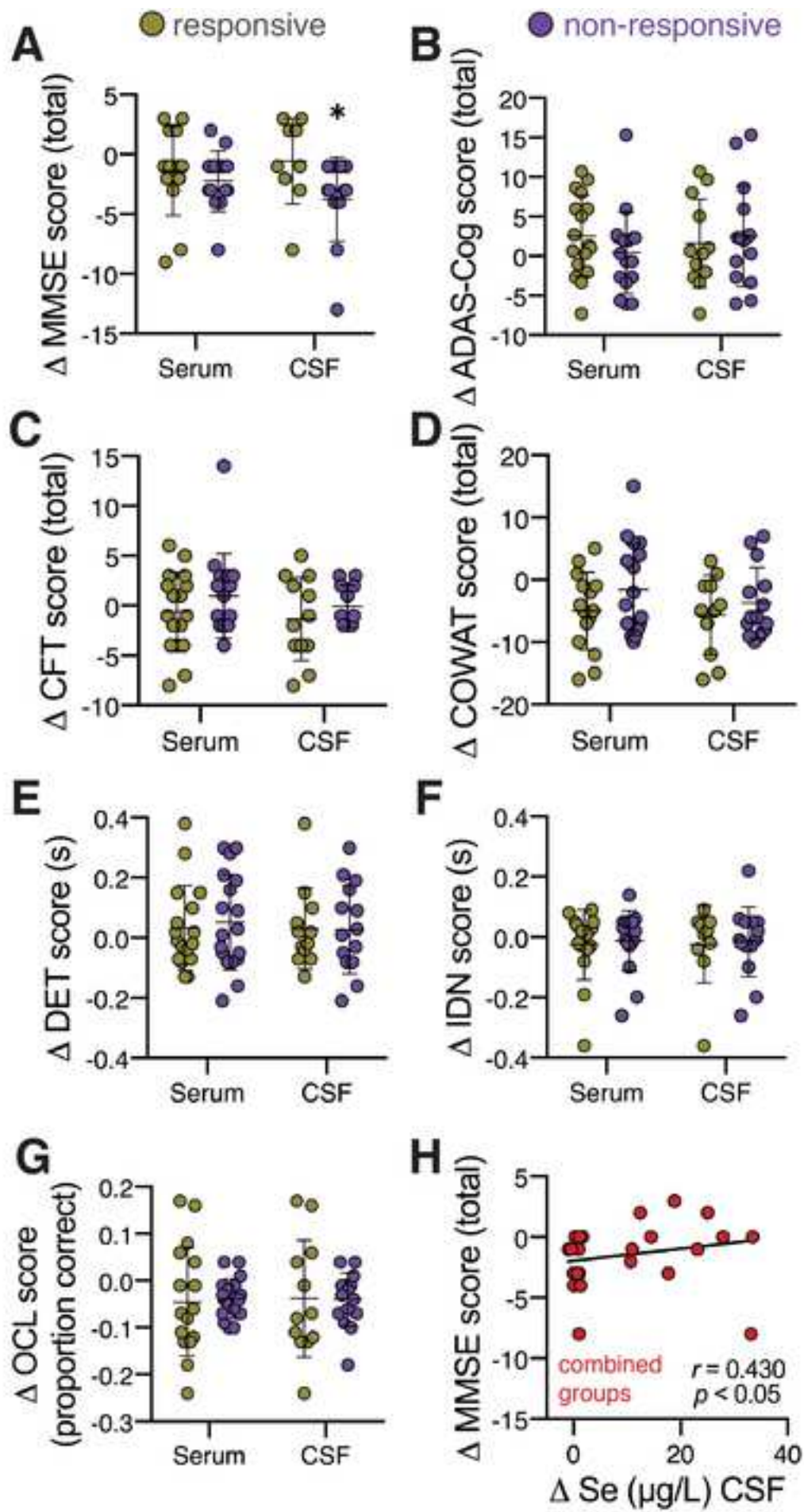
- 1
2
3
4
5
6
7
8
9
10
11
12
13
14
15
16
17
18
19
20
21
22
23
24
25
26
27
28
29
30
31
32
33
34
35
36
37
38
39
40
41
42
43
44
45
46
47
48
49
50
51
52
53
54
55
56
57
58
59
60
61
62
63
64
65
43. Burgos N, Cardoso MJ, Modat M *et al.* CT synthesis in the head & neck region for PET/MR attenuation correction: an iterative multi-atlas approach. *EJNMMI Phys.* 2015;2(Suppl 1):A31.
44. Cardoso B, Hare D, Bush A, Roberts B. Glutathione peroxidase 4: a new player in neurodegeneration? *Mol Psychiatry.* 2017;22(3).
45. Dixon SJ, Lemberg KM, Lamprecht MR *et al.* Ferroptosis: an iron-dependent form of nonapoptotic cell death. *Cell.* 2012;149(5):1060-72.
46. Dixon SJ, Stockwell BR. The role of iron and reactive oxygen species in cell death. *Nat Chem Biol.* 2014;10(1):9-17.
47. Stockwell BR, Angeli J, Bayir H *et al.* Ferroptosis: A Regulated Cell Death Nexus Linking Metabolism, Redox Biology, and Disease. *Cell.* 2017;171(2):273-85.
48. Xiong S, Markesbery WR, Shao C, Lovell MA. Seleno-L-Methionine Protects Against β -Amyloid and Iron/Hydrogen Peroxide-Mediated Neuron Death. *Antioxid Redox Signal.* 2007;9(4):457-67.

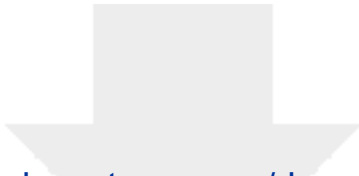




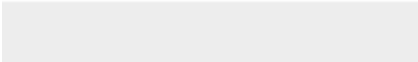








Click here to access/download
Conflict of Interest Form
coi_disclosure BRODTMANN.pdf





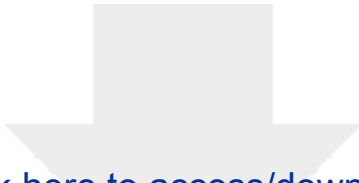
Click here to access/download
Conflict of Interest Form
coi_disclosure_BUSH.pdf



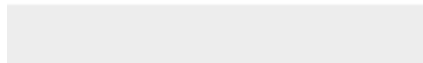


Click here to access/download
Conflict of Interest Form
coi_disclosure_CALLAHAN.pdf





Click here to access/download
Conflict of Interest Form
coi_disclosure_CARDOSO.pdf





Click here to access/download
Conflict of Interest Form
coi_disclosure_COLLINS.pdf





Click here to access/download
Conflict of Interest Form
coi_disclosure_CORCORAN.pdf





Click here to access/download
Conflict of Interest Form
coi_disclosure_DESMOND.pdf






Click here to access/download
Conflict of Interest Form
coi_disclosure_GENC.pdf



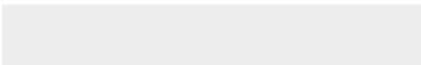



Click here to access/download
Conflict of Interest Form
coi_disclosure_HARE.pdf





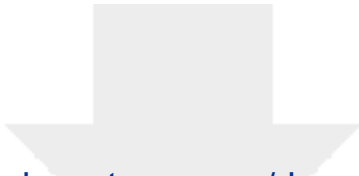
Click here to access/download
Conflict of Interest Form
coi_disclosure_HICKS.pdf



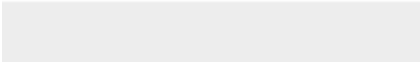


Click here to access/download
Conflict of Interest Form
coi_disclosure_HOVENS.pdf





Click here to access/download
Conflict of Interest Form
coi_disclosure_MACFARLANE.pdf





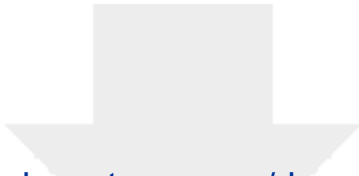
Click here to access/download
Conflict of Interest Form
coi_disclosure_MALPAS.pdf



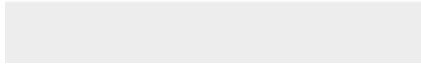


Click here to access/download
Conflict of Interest Form
coi_disclosure_OBRIAN.pdf





Click here to access/download
Conflict of Interest Form
coi_disclosure_STEWARD.pdf





Click here to access/download
Conflict of Interest Form
coi_disclosure_VELAKOULIS.pdf





Click here to access/download
Conflict of Interest Form
coi_disclosure-ROBERTS.pdf





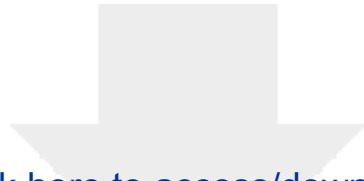
Click here to access/download
Conflict of Interest Form
coi_disclosure_SALING.pdf





Click here to access/download
Conflict of Interest Form
coi_disclosure_VIVASH.pdf





Click here to access/download
Electronic Supplementary Material
Supplementary Table 1.docx

