

Journal of Affective Disorders

Examining longitudinal associations between self-reported depression, anxiety and stress symptoms and hair cortisol among mothers of young children.

--Manuscript Draft--

Manuscript Number:	JAFD-D-20-00515R1
Article Type:	Research Paper
Keywords:	maternal; mental health; hair cortisol; depression; anxiety; Stress
Corresponding Author:	Hannah Bryson, PhD Murdoch Childrens Research Institute AUSTRALIA
First Author:	Hannah Bryson, PhD
Order of Authors:	Hannah Bryson, PhD Melissa Middleton Hamidul Huque Fiona Mensah Sharon Goldfeld Anna Price
Abstract:	<p>Background: Maternal mental health is critically important given its impacts on both women's and children's outcomes. Hair cortisol concentrations (HCC) may provide insight into physiological processes underpinning mental health. This study investigated associations between mothers' self-reported mental health symptoms and their HCC at 1, 2 and 3 years postpartum.</p> <p>Methods: Longitudinal study of Australian mothers recruited for their experience of adversity in pregnancy ('right@home' trial, N=722). Mental health symptoms were self-reported using the Depression, Anxiety and Stress Scales (DASS). Associations between DASS total and subscale scores and HCC were estimated using linear regression and generalized estimating equation (GEE) models, examining associations: at each age; across all ages (multivariate GEE); and with persistence of high symptom severity. Missing data were addressed using multiple imputation.</p> <p>Results: 546/722 (76%) women provided at least one hair sample (71% at 1, 61% at 2, 49% at 3 years). Associations between DASS total or subscale scores and HCC were not evident across time points. Only dichotomized high depression symptom severity was associated with higher HCC in the GEE models ($\beta=0.12, p=0.04$). There was no evidence of associations between persistence of high DASS symptom severity and HCC at 3 years.</p> <p>Limitations: The DASS measured self-reported symptoms for the preceding week whereas HCC captured average cortisol over three months. Associations amongst mothers experiencing adversity may not represent patterns in the general population.</p> <p>Conclusions: Considered in context with existing literature, these findings suggest that HCC provides limited insight into the mental health mothers experiencing adversity across the early postpartum years.</p>
Suggested Reviewers:	Samantha Wells Centre for Addiction and Mental Health samantha.wells@camh.ca Amanda Tarullo Boston University atarullo@bu.edu Sabine Staufenbiel Erasmus MC s.staufenbiel@erasmusmc.nl Stefanie Braig Ulm University

	stephanie.braig@uni-ulm.de
Opposed Reviewers:	
Response to Reviewers:	We thank the Reviewers for their considered feedback. We have addressed the Reviewer comments in the attached document "Response to Reviewers".

10 November 2020

To the Editors-in-Chief: Dr Paolo Brambilla, Dr Jair Soares
Journal of Affective Disorders

Dear Dr Paolo Brambilla & Dr Jair Soares

We are delighted to re-submit our revised manuscript JAFD-D-20-00515, titled **“Examining longitudinal associations between self-reported depression, anxiety and stress symptoms and hair cortisol among mothers of young children.”**

We thank the Reviewers for their considered feedback. We note their positive comments including recognition of the large cohort and longitudinal design of the study. We have carefully and thoroughly considered and addressed the Reviewer comments; noting most of them required additional detail and clarification, rather than any substantive changes.

We hope you find this version improved in clarity and detail.

Thank you again for considering this paper.

Yours sincerely,



Dr Hannah Bryson PhD BA(Hons)
Policy, Equity and Translation, Murdoch Children's Research Institute
Centre for Community Child Health, The Royal Children's Hospital
Department of Paediatrics, University of Melbourne
Flemington Road Parkville Victoria 3052 Australia
T: +61 3 9345 6168
E: hannah.bryson@mcri.edu.au
www.mcri.edu.au

Reviewer responses for Manuscript **JAFD-D-20-00515** “**Examining longitudinal associations between self-reported depression, anxiety and stress symptoms and hair cortisol among mothers of young children.**”

	Reviewer comment	Author Response (Manuscript text shown in italics, with relevant changes underlined)	Line and page where changes made
	Reviewer 1		
1	The objective of this manuscript is to investigate the associations between mother's self-reported mental health symptoms and hair cortisol concentrations at 1,2 and 3 years postpartum. And it was found that hair cortisol concentration provided limited insight into mother's mental health symptoms over 3 years.		
2	"Hair cortisol concentrations" part: Authors should describe in detail the quantitative analysis process of hair cortisol concentration, such as quality of the hair sample required, sample pretreatment process, and the measurement process.	<p>We have added details (underlined) to the description provided in Measures, Section 2.3.1 Hair cortisol concentrations:</p> <p><i>Hair samples from the first 3cm of hair cut closest to the scalp were analyzed. Samples were taken from 1-4 portions cut from the posterior vertex region of the scalp, based on international standard practice, where hair shows the most uniform growth rates (Stalder and Kirschbaum, 2012). <u>Before analysis, samples were stored wrapped in foil, in envelopes, in locked filing cabinets. Regular audits were undertaken to ensure sample weights (30 to 50mg) and quality of all collected hair samples were sufficient for analysis.</u> The Australian laboratory Stratech Scientific analyzed the samples. Samples were weighed, mechanically crushed and methanol was used for extraction for 24 hours with sonication. Samples were then dried to remove all methanol and reconstituted in phosphate-buffered saline for analysis. HCC was analyzed in duplicate using a</i></p>	Page 4, line 24

		<u>the Beck Depression Inventory, amongst both postpartum and general adult cohorts (Cunningham et al., 2013; Osman et al., 2012).</u>	
4	"Statistical analysis" part: In the last paragraph of this part, I could not understand how the repeated data about mental health and hair cortisol concentrations were included in the multivariable linear regression models. Please the author to explain.	<p>We have expanded the description of the statistical analysis to clarify how we included repeated data about mental health and hair cortisol concentrations in the multivariable linear regression models:</p> <p><i>Finally, we used multivariable linear regression models to <u>examine the association between persistence of high symptom severity from 1 to 3 years postpartum and HCC at 3. Using the aforementioned categorical DASS variables, this analysis tested for associations between the reference group (women reporting no high symptom severity at any time-point), with the 'intermittent' (high symptom severity at one or two time-points), and 'persistent' (high symptom severity at all three time points) groups. The linear regression models used multiply imputed data and controlled for confounders.</u></i></p>	Page 7, line 30
5	"Results" part: In this part, authors should add descriptive information about hair cortisol concentrations, such as concentration range, mean and standard deviation.	<p>We have added a summary of the descriptive results shown in Table 1 within the text:</p> <p><i><u>Maternal HCC results at each time point are presented in Table 1; mean HCC was 6.2 (SD: 8.6), 5.7 (SD: 6.1) and 6.3 (SD: 6.4) pg/mg at 1-, 2- and 3-year follow-up, respectively.</u></i></p>	Page 8, line 30
	Reviewer 2		
7	The present study aimed to examine the association between hair cortisol concentrations and levels of depression in mothers post-partum. The study has several strengths including a large sample size and longitudinal design. The major weakness of the study is the depression measures rated how participants felt over the last week, where hair cortisol examines the past	<p>Thank you for highlighting further areas for consideration in our study. We agree that the timing of measurement is a potential limitation of this study. In the Discussion we describe evidence supporting the stability of mental health symptoms and use of the DASS as a longer-term measure of mental health, despite the focus on the preceding week:</p> <p><i>An underlying assumption made by this study is that poor self-reported mental health represents relatively stable mental health symptoms rather than transient mood, allowing HCC and the DASS to be comparable as</i></p>	

	<p>several months. This is a major limitation of the study and could very well explain some of the null results. However, the authors do acknowledge the limitation in multiple places. Other more minor limitations are noted below.</p>	<p><i>longer-term measures of the preceding months. One study assessing the test-retest reliability of the DASS in a population of older Australians over a 3-month period showed scores for each subscale were correlated across time points (Gomez et al., 2014), which supports this assumption; although, studies have shown other self-report measures of mental health (such as the EPDS) had low test-retest reliability in postpartum women over a period of 2-3 weeks (Ballestrem et al., 2005; Morrell et al., 2009).</i></p> <p>We address the additional limitations raised by the reviewer in points 10 and 11 below.</p>	
8	<p>In the paragraph on hair cortisol and psychological stress, please make clear if the Ouellette, Boeckel and Urasche studies are examining maternal hair cortisol with anxiety symptoms or child hair cortisol with maternal anxiety symptoms? Similarly, the wording of the sentences that follow is confusing "Ouellette et al. (2015) found that mothers of 7-year olds who self-reported high stress had lower HCC than mothers reporting low stress" - assuming this is mother stress and not self-report stress of their child?</p>	<p>We have amended the paragraph to clarify:</p> <p><i>Ouellette et al. (2015), Boeckel et al. (2017) and Ursache et al. (2017) all reported no associations between <u>maternal</u> HCC and self-reported depression. Ursache et al. (2017) found that higher <u>parental</u> HCC (in a sample that predominately comprised mothers) was associated with higher anxiety symptoms, whereas Ouellette et al. (2015) reported no <u>association between maternal HCC and maternal anxiety symptoms</u>. While two studies have reported no association between <u>maternal</u> HCC and self-reported stress in mothers of infants (Liu et al., 2016) or adolescents (Olstad et al., 2016), Ouellette et al. (2015) found that mothers who self-reported high stress had lower HCC than mothers reporting low stress, <u>when their children were 7 years</u>. Additionally, Braig et al. (2019) found inconsistent associations between several dimensions of self-reported stress and <u>maternal</u> HCC in mothers of infants.</i></p>	Page 2, line 21
9	<p>Similarly, when reading the abstract (background) and aims (at the end of the Introduction) it sets it up as if the study is examining mental health of the women and their children. Please make clearer throughout.</p>	<p>We have amended the abstract to clarify that the aim of this study is to examine maternal mental health and maternal HCC:</p> <p><i>This study investigated associations between mothers' self-reported mental health symptoms and <u>their</u> HCC at 1, 2 and 3 years postpartum.</i></p> <p>And in the aims at the end of the introduction:</p>	Abstract

		<p><i>If maternal self-reported mental health symptoms are associated with <u>maternal HCC</u>, it could help to understand the physiological processes which underlie mental health during this critical period.</i></p> <p><i>In a large community-based cohort of women recruited during pregnancy for their experience of adversity, we investigated associations between mother's self-reported depression, anxiety and stress symptoms and <u>their HCC at 1, 2 and 3 years postpartum.</u></i></p>	<p>Page 3, line 6</p> <p>Page 3, line 10</p>
10	<p>Do you have information regarding previous episodes of depression (i.e., before enrolling in the study)? If so, this should be included. If not, this needs to be written as a limitation.</p>	<p>We did not collect data on participants' prior episodes or history of depression or other mental health conditions in the right@home trial (from which our data are drawn). We collected the DASS in pregnancy (at enrolment) and these characteristics are reported in Table 1.</p> <p>We do not control for DASS collected during pregnancy in our analyses because of the substantial variation in women's mental health during pregnancy (as we have now stated in the Introduction):</p> <p><i>However, the existing literature with maternal cohorts has focused predominately on HCC in pregnancy – a time of increased HPA axis activity (D'Anna-Hernandez et al., 2011; Kirschbaum et al., 2009) <u>and when mental health symptoms can be more likely to fluctuate (Ballestrem et al., 2005; Morrell et al., 2009).</u></i></p> <p>Analysis of repeated measures (GEE) requires concurrent HCC and mental health measures necessitating our focus on 1, 2 and 3 years postpartum, when HCC was assessed.</p>	<p>Page 2, line 16</p>
11	<p>Was data collected on medication status during the follow-up periods? Accounting for mothers who may have been on anti-depressants to treat depression after birth would be an important factor to consider. If</p>	<p>As noted in the Methods, medication data were not collected and therefore could not be accounted for in the analyses. We have added this to the limitations:</p>	

	<p>so, this should be included. If not, this needs to be written as a limitation.</p>	<p><i>While evidence suggests medications have minimal influence on HCC (Stalder et al., 2017), this evidence is not specific to mental health medications and it is a limitation that we were unable to account for women who may have been taking medication to manage a mental health condition.</i></p>	<p>Page 12, line 31</p>
<p>12</p>	<p>Table 2 does not include randomization status (intervention/no intervention) as a potential confounder. This is important information that should be included.</p>	<p>All analyses, including those presented in Table 2, control for randomization status as a potential confounder. We have clarified this in the Methods and noted previous research showing no association between the intervention and HCC:</p> <p><i>To address any effects of the original trial design, RCT randomization status (intervention/control) was accounted for in all analyses; previous findings show there was no association between the intervention and HCC (Goldfeld et al., 2019).</i></p> <p>We have also clarified the footnote on Table 2:</p> <p><i>All estimates are controlled for randomization status.</i></p>	<p>Page 6, line 18</p> <p>Table 2</p>

HIGHLIGHTS

- Longitudinal study of mothers' mental health and hair cortisol concentration (HCC).
- HCC provided limited insight into mothers' mental health symptoms over 3 years.
- Depression, anxiety and stress continuous symptom scores not associated with HCC.
- Only high depression symptom severity was associated with higher HCC.
- Persistent high depression, anxiety and stress symptoms not associated with HCC.

ABSTRACT

Background: Maternal mental health is critically important given its impacts on both women's and children's outcomes. Hair cortisol concentrations (HCC) may provide insight into physiological processes underpinning mental health. This study investigated associations between mothers' self-reported mental health symptoms and their HCC at 1, 2 and 3 years postpartum.

Methods: Longitudinal study of Australian mothers recruited for their experience of adversity in pregnancy ('right@home' trial, N=722). Mental health symptoms were self-reported using the Depression, Anxiety and Stress Scales (DASS). Associations between DASS total and subscale scores and HCC were estimated using linear regression and generalized estimating equation (GEE) models, examining associations: at each age; across all ages (multivariate GEE); and with persistence of high symptom severity. Missing data were addressed using multiple imputation.

Results: 546/722 (76%) women provided at least one hair sample (71% at 1, 61% at 2, 49% at 3 years). Associations between DASS total or subscale scores and HCC were not evident across time points. Only dichotomized high depression symptom severity was associated with higher HCC in the GEE models ($\beta=0.12$, $p=0.04$). There was no evidence of associations between persistence of high DASS symptom severity and HCC at 3 years.

Limitations: The DASS measured self-reported symptoms for the preceding week whereas HCC captured average cortisol over three months. Associations amongst mothers experiencing adversity may not represent patterns in the general population.

Conclusions: Considered in context with existing literature, these findings suggest that HCC provides limited insight into the mental health mothers experiencing adversity across the early postpartum years.

Research Article

Title: Examining longitudinal associations between self-reported depression, anxiety and stress symptoms and hair cortisol among mothers of young children.

Running title: Maternal mental health and hair cortisol

Authors: Dr Hannah Bryson (BA(Hons))^{1,2,3} hannah.bryson@mcri.edu.au
Ms Melissa Middleton (BBiomedSc)^{4,5} melissa.middleton@mcri.edu.au
Dr Hamidul Huque (MSc, PhD)^{3,5} hamidul_b7@yahoo.com
Dr Fiona Mensah (MSc, PhD)^{3,5} fiona.mensah@mcri.edu.au
Prof Sharon Goldfeld (FRACP, FAFPHM, PhD)^{1,2,3}
sharon.goldfeld@rch.org.au
Dr Anna MH Price (BA(Hons) PhD)^{1,2,3} anna.price@mcri.edu.au

Affiliations: ¹ Murdoch Children's Research Institute, Parkville Vic 3052
² Centre for Community Child Health, The Royal Children's Hospital, Parkville Vic 3052
³ Department of Paediatrics, The University of Melbourne, Parkville Vic 3052
⁴ Centre for Epidemiology and Biostatistics, Melbourne School of Population and Global Health, University of Melbourne, VIC 3010
⁵ Clinical Epidemiology and Biostatistics Unit, Murdoch Children's Research Institute, The Royal Children's Hospital, Parkville, Vic 3052 All Australia

Corresponding Author: Dr Hannah Bryson
Murdoch Children's Research Institute
Parkville VIC 3052, AUSTRALIA
+61 3 9345 6168
hannah.bryson@mcri.edu.au

Words: 4342

Keywords: maternal; mental health; hair cortisol; depression; anxiety; stress

Abbreviations: BRF: brief risk factor, CI: Confidence interval, DASS: Depression, Anxiety, Stress Scales short-form, ELISA: Enzyme linked immunoassay, GEE: Generalized estimating equations, HCC: hair cortisol concentrations, HPA axis: Hypothalamic pituitary adrenal axis, RCT: Randomized controlled trial, SD: standard deviation, SEIFA: Socio-economic Index for Areas.

1 **1. INTRODUCTION**

2 Maternal mental health, including depression, anxiety and stress symptoms, are important
3 determinants of women's health and wellbeing and their children's health and developmental
4 outcomes (Kurtz et al., 2017; Lovejoy et al., 2000; Prince et al., 2007). The postpartum years are
5 particularly important because of the increased prevalence of maternal mental health symptoms
6 at a time when children's development is most sensitive to their environments (Giallo et al.,
7 2014; Prince et al., 2007; Shonkoff and Phillips, 2000). Understanding mothers' experiences of
8 mental health symptoms is important for identifying women and children at risk of poorer
9 outcomes and maximizing opportunities for prevention and intervention. Biomarkers of
10 physiological stress, such as hair cortisol concentrations (HCC), have the potential to provide
11 insights into, and objectively measure, the physiological processes underlying psychological
12 stress and mental health symptoms. However, the available evidence is yet to determine whether
13 HCC can provide such insights into maternal mental health symptoms in the early postpartum
14 years.

15
16 The hormone cortisol is an important component of the physiological processes underlying
17 stress-related mental health symptoms (Chida and Steptoe, 2009; Staufienbiel et al., 2013).
18 Cortisol is the end product of the hypothalamic pituitary adrenal (HPA) axis, which is a principal
19 component of the human physiological stress response (McEwen and Gianaros, 2010). The brain
20 regions which regulate the HPA axis and physiological stress response (e.g. hippocampus,
21 amygdala, prefrontal cortex) are also key regions implicated in emotional regulation and the
22 development of psychopathology, including anxiety and depression (Hilbert et al., 2014; Lupien
23 et al., 2009). Dysregulated cortisol production has been associated with detrimental changes to
24 these regions, such as alterations to size, neuronal circuitry and structure (Lupien et al., 2009;
25 McEwen and Gianaros, 2010). Such alterations have also been associated with poor mental
26 health outcomes, e.g. decreased hippocampal volume in cases of clinical depression, and
27 increased amygdala volume associated with heightened anxiety (Lupien et al., 2009).

28
29 Traditionally, studies examining associations between mental health and cortisol have primarily
30 focused on measurement in saliva. Studies of salivary cortisol have described mental health-
31 related differences in the diurnal pattern of cortisol, including elevated patterns of cortisol

1 secretion in individuals with generalized anxiety (Steudte et al., 2011) and major depressive
2 disorders (Vreeburg et al., 2009). However, these findings are inconsistent, possibly because
3 saliva provides a single time-point measurement of cortisol that is sensitive to time of day,
4 current stressors and other environmental factors (Hilbert et al., 2014; Steudte et al., 2011;
5 Vreeburg et al., 2009). Additionally, the structural and functional changes in the brain regions
6 associated with mental health conditions are thought to be associated with long-term cortisol
7 dysregulation while the effects of short-term cortisol fluctuations, such as those captured by
8 salivary cortisol, are thought to be remediable (Lupien et al., 2009). Measuring long-term
9 cortisol is therefore important to understanding the role of physiological stress in mental health.

10

11 HCC is considered to be a longer-term measure of physiological stress, compared to the
12 traditional single-time point measures of cortisol. HCC captures the accumulation of cortisol
13 produced and incorporated into the growing hair over time. In recent years, HCC has been
14 identified as a potentially meaningful biomarker for understanding the physiological processes
15 associated with psychological stress and mental health symptoms (Stalder et al., 2017;
16 Staufenbiel et al., 2015). However, the existing literature with maternal cohorts has focused
17 predominately on HCC in pregnancy – a time of increased HPA axis activity_ (D'Anna-
18 Hernandez et al., 2011; Kirschbaum et al., 2009) and when mental health symptoms are can be
19 more likely to fluctuate (Ballestrem et al., 2005; Morrell et al., 2009). Only a handful of studies
20 have investigated associations between maternal HCC and mental health beyond pregnancy and
21 findings are inconsistent. Ouellette et al. (2015), Boeckel et al. (2017) and Ursache et al. (2017)
22 all reported no associations between maternal HCC and parental-self-reported depression.
23 Ursache et al. (2017) found that higher parental HCC (in a sample that predominately comprised
24 mothers) HCC was associated with higher -anxiety symptoms, whereas Ouellette et al. (2015)
25 reported no association between maternal HCC and maternal anxiety symptoms such association.
26 While two studies have reported no associations between maternal HCC and self-reported stress
27 in mothers of infants (Liu et al., 2016) or adolescents (Olstad et al., 2016), Ouellette et al. (2015)
28 found that mothers of 7-year-olds who self-reported high stress had lower HCC than mothers
29 reporting low stress, when their children were 7 years. Additionally, Braig et al. (2019) found
30 inconsistent associations between several dimensions of self-reported stress and maternal HCC
31 in mothers of infants. These inconsistencies are not limited to HCC research with mothers; they

1 represent the findings from studies with adults unselected for age, parenthood and gender as well
2 (Abell et al., 2016; Feller et al., 2014; Fischer et al., 2017; Gidlow et al., 2016; Karlén et al.,
3 2011; Smyth et al., 2016; Stalder et al., 2012; van Holland et al., 2012).

4
5 On the weight of the available evidence, it is not possible to conclude whether HCC can provide
6 consistent insights into mental health symptoms. If maternal self-reported mental health
7 symptoms are associated with maternal HCC, it could help to understand the physiological
8 processes which underlie mental health during this critical period. Given the inconsistent
9 evidence in the existing literature, we aimed to provide a comprehensive analysis of these
10 relationships amongst mothers during the early postpartum years. In a large community-based
11 cohort of women recruited during pregnancy for their experience of adversity, we investigated
12 associations between mother's self-reported depression, anxiety and stress symptoms and their
13 HCC at 1, 2 and 3 years postpartum. Using longitudinal data collected in the first three years
14 postpartum, we examined severity of maternal mental health symptoms as continuous symptom
15 scores, the presence of high symptom severity and persistence of high symptom severity over
16 time.

17 18 **2. METHODS**

19 **2.1. Design and setting**

20 A longitudinal cohort study nested within the right@home randomized controlled trial (RCT,
21 International Standard Randomized Controlled Trial Number ISRCTN89962120) of nurse home
22 visiting. The RCT comprised a large cohort of women recruited from a community setting for
23 their experience of social adversity during pregnancy. Detailed methods for the RCT are
24 described in the published protocol (Goldfeld et al., 2017).

25 26 **2.2 Participants and procedure**

27 The RCT recruited pregnant women attending antenatal clinics in 10 public maternity hospitals
28 across Victoria and Tasmania, Australia, from 30 April 2013 to 29 August 2014. Inclusion
29 criteria were women with (i) expected due dates before 1 October 2014, (ii) less than 37 weeks
30 gestation in their pregnancy at the time of recruitment, (iii) sufficient English proficiency to
31 answer interview questions, (iv) home addresses within travel boundaries of the study and (v)

1 self-reported two or more of 10 antenatal risk factors: young pregnancy; not living with another
2 adult; no support in pregnancy; “poor/fair/good” health; a long-term illness, health problem or
3 disability that limits daily activities; currently smokes; significant stress and coping difficulties;
4 low education; no person in the household who currently earns an income; and never having had
5 a job before (Goldfeld et al., 2018; Price et al., 2018). Exclusion criteria were women who (i)
6 were enrolled in an existing Tasmanian nurse home visiting program, (ii) did not comprehend the
7 recruitment invitation (e.g. had an intellectual disability such that they were unable to consent to
8 participation, or had insufficient English to complete assessments), (iii) had no mechanism for
9 contact (telephone or email address), or (iv) experienced a critical event that excluded their
10 participation (e.g. termination of pregnancy, still birth, participant or child death).

11
12 Women who chose to enroll in the RCT provided informed consent and completed a
13 comprehensive baseline interview, in which they reported demographics and potential
14 confounders (see Measures, below). The initial RCT consent included follow-up to child age 2
15 years, at which time women were invited to consent to ongoing follow-up until their child was 5
16 years old. At annual, home-based assessments conducted at child ages 1, 2 and 3 years, women
17 completed the Depression, Anxiety, Stress Scales (DASS) short-form and provided hair samples
18 for cortisol analysis. Participants included in the current study were women who completed the
19 RCT enrolment interview and completed at least one follow-up assessment at which they
20 provided a hair sample at 1, 2 or 3 years.

21 22 **2.3 Measures**

23 2.3.1 Hair cortisol concentrations

24 Hair samples from the first 3cm of hair cut closest to the scalp were analyzed. Samples were
25 taken from 1-4 portions cut from the posterior vertex region of the scalp, based on international
26 standard practice, where hair shows the most uniform growth rates (Stalder and Kirschbaum,
27 2012). Before analysis, samples were stored wrapped in foil, in envelopes, in locked filing
28 cabinets. Regular audits were undertaken to ensure sample weights (30 to 50mg) and quality of
29 all collected hair samples were sufficient for analysis. The Australian laboratory Stratech
30 Scientific analyzed the samples. Samples were weighed, mechanically crushed and methanol was
31 used for extraction for 24 hours with sonication. Samples were then dried to remove all methanol

1 and reconstituted in phosphate-buffered saline for analysis. HCC was analyzed in duplicate using
2 a commercially available enzyme-linked immunosorbent assay (ELISA) (Salimetrics, USA)
3 according to the manufacturer's instructions. Intra- and inter-assay coefficients of variability
4 were 5.4% and 6.0% respectively, indicating high precision of the assays. Values are expressed
5 as single continuous concentrations of cortisol in pg/mg of hair, which were transformed to the
6 natural log to address skewness and approximate a normal distribution.

7 8 2.3.2 Depression, Anxiety, Stress Scales (DASS) short-form

9 The DASS short-form (Lovibond and Lovibond, 1995a) is a self-report measure comprising 21
10 items. which individuals rated items on a 4-point scale (scored 0 to 3 for options "not at all" to
11 "most of the time"), assessing symptoms across three subscales: of dDepression, anxiety Anxiety
12 and stress Stress, experienced during the past week. Scores are summed to produce a continuous
13 total score (possible range 0-63) and scores for three subscales (7 items each, possible range 0-
14 21): Depression, Anxiety and Stress. Higher scores indicate poorer mental health symptoms.
15 The DASS subscales have strongly correlated with other self-report mental health measures in
16 Australian postpartum women, such as the Edinburgh Postnatal Depression Scale (EPDS,
17 r=0.84), and the Beck Anxiety Inventory (BAI, r=0.86) anxiety and depression subscales of and
18 Beck Depression Inventory (BDI-II, r=0.82 and 0.86, respectively)(Cunningham et al., 2013), as
19 well as adult community cohorts (BAI, r=0.69; BDI-II, r=0.80; Perceived Stress Scale,
20 r=0.73)(Osman et al., 2012). The established internal validity of the DASS total and subscales
21 (Henry and Crawford, 2005; Lovibond and Lovibond, 1995b) was confirmed in our study
22 (Cronbach's alpha: 0.77 to 0.93).

23
24 To explore associations between high mental health symptom severity and HCC, each
25 continuous DASS score was further dichotomized into categories reflecting high symptom
26 severity (top 15% of scores) versus not high (bottom 85%) according to population reference
27 ranges for UK adults (Henry and Crawford, 2005). To examine persistence of high symptom
28 severity over time, categories were derived according to the number of time-points (at 1, 2, and 3
29 years) that each mother reported high symptom severity across the Depression, Anxiety, Stress
30 and Total Scale scores. Each was categorized as: 'never' (none of the time-points), 'intermittent'
31 (one or two time-points) or 'persistent' (all three time-points).

1
2
3
4
5
6
7
8
9
10
11
12
13
14
15
16
17
18
19
20
21
22
23
24
25
26
27
28
29
30
31

2.3.3 Potential confounders

Selected *a priori* based on existing evidence for associations with adult hair cortisol and maternal mental health symptoms. Potential confounders collected at baseline (pregnancy) were maternal age (Giallo et al., 2014; Stalder et al., 2017), ~~RCT randomization status (intervention/usual care)~~, and proxies for socioeconomic adversity (Braig et al., 2015; Giallo et al., 2014): mothers' highest level of education (did not complete high school/completed high school or higher); count of the screening survey risk factors (possible range 2-10); and Socio-Economic Indexes for Areas (SEIFA) Index of Relative Disadvantage, a national postcode level index with higher scores indicating greater advantage (Australian Bureau of Statistics Census of Population and Housing, 2011). Potential confounders collected as repeated measures at each assessment were current smoking status (yes/no)(Braig et al., 2015; Wells et al., 2014), whether women were currently pregnant (D'Anna-Hernandez et al., 2011; Kirschbaum et al., 2009) and primary source of household income as a proxy for socioeconomic adversity (benefit, pension or no income/part time or casual employment/full-time employment)(Giallo et al., 2014; Ursache et al., 2017). Season of each hair sample collection was also recorded, categorized by month according to Australian seasons (Summer [December-February]; Autumn [March-May]; Winter [June-August]; Spring [September-November])(Braig et al., 2015). To address any effects of the original trial design, RCT randomization status (intervention/control) was accounted for in all analyses; previous findings show there was no association between the intervention and HCC (Goldfeld et al., 2019). Hair colour, hair washing, medication or oral contraceptive use were not included as potential confounders as the larger RCT did not collect data on these characteristics and current evidence suggests these have minimal influence on hair cortisol concentrations (Stalder et al., 2017). Although there is some evidence to suggest adult BMI may be associated with hair cortisol (Stalder et al., 2017), maternal BMI was not collected and therefore was not included in the current analyses.

2.4 Statistical Analysis

Participant characteristics were calculated for the trial cohort at baseline and for women who provided HCC at child ages 1, 2 and 3 years, reported as mean (standard deviation [SD]) and range for continuous variables, and frequency and proportion for categorical variables. To aid

1 interpretation, continuous DASS total and subscale scores were rescaled to z-scores (with mean
2 0, SD 1) according to the distribution within the cohort. Examination of fractional polynomial
3 fitted plots (Supplementary Figures 1-4) supported assuming linearity for relationships between
4 each continuous DASS score and the log-transformed HCC at each assessment; thus, linear
5 associations were examined.

6
7 To examine the cross-sectional relationships between continuous DASS total and subscale scores
8 and all prespecified potential confounders with HCC, linear regression models were conducted
9 for each individual exposure at each time-point of child ages 1, 2, and 3 years. Each of the
10 individual regression models controlled only for randomization status.

11
12 To examine whether there were any associations between each DASS total and subscale score
13 and HCC, considering repeated measures across all time-points, multivariate generalized
14 estimating equations (GEE) models were conducted using complete cases data (486 women with
15 complete data at any one time-point). GEE models controlled for all prespecified potential
16 confounders except current pregnancy, which was excluded due to small numbers of pregnant
17 women at each time-point. Multivariate GEE models were conducted to examine each
18 standardized continuous DASS total and subscale score and each dichotomized high symptom
19 severity total and subscale score, for associations with HCC. GEE models were used to adjust for
20 correlation between repeated measurements of DASS and HCC at 1, 2 and 3 years. To address
21 missing data, multiple imputation based on a fully conditional specification (Huque et al., 2018)
22 was then used to impute missing data for all 546 women included in the analytic samples (who
23 had HCC measured at least once). [The](#) DASS total score was summed using the imputed
24 subscale scores and dichotomized DASS scores were generated using the imputed total and
25 subscale scores; 10 imputed datasets were generated as approximately 10% of the data were
26 missing (White et al., 2011). Multiple imputation analyses showed no substantive differences to
27 analyses of complete cases so the imputed results are presented in the main results (Tables 3 and
28 4) and complete cases in supplementary results (Supplementary Tables 1 and 2).

29
30 Finally, we used multivariable linear regression models to examine [the association between](#)
31 [persistence of high symptom severity from 1 to 3 years postpartum and HCC at 3. Using the](#)

1 aforementioned categorical DASS variables, this analysis tested for associations between the
2 reference group (women reporting no high symptom severity at any time-point), with the
3 ‘intermittent’ (high symptom severity at one or two time-points), and ‘persistent’ (high symptom
4 severity at all three time points) groups. associations between persistence of high symptom
5 severity over time and HCC at 3 years for each DASS total and subscale score. The derived
6 categories of ‘intermittent’ (high symptom severity at one or two time points) and ‘persistent’
7 (high symptom severity at all three time points) were examined for associations with HCC, with
8 ‘never’ (high symptom severity at none of the time points) as the reference category.
9 associations between ‘intermittent’/‘persistent’ high symptom severity across all time points
10 (compared with ‘never’) with HCC at 3 years for each DASS total and subscale score. The linear
11 regression models used using multiply imputed data and controlled ~~ing~~ for confounders. All
12 dData were analyzed using Stata 13.1 (StataCorp, College Station, TX).

14 **2.5 Ethical approval**

15 This study was approved by the Human Research Ethics Committees of The Royal Children’s
16 Hospital (HREC 32296); Peninsula Health (HREC/13/PH/14); Ballarat Health Services
17 (HREC/13/BHSSJOG/9); Southern Health (HREC 13084X); Northern Health (HREC P03/13) in
18 Victoria, and The University of Tasmania (HREC H0013113), all Australia.

20 **3. RESULTS**

21 Of 722 women enrolled in the trial, 546 (76%) provided at least one hair sample across the three
22 time points (Figure 1): 513 (71%) at 1 year, 438 (61%) at 2 years, and 357 (49%) at 3 years.
23 Table 1 shows the participant characteristics for the RCT cohort at baseline and for women who
24 provided HCC at each assessment. Visual inspection of these characteristics suggests younger
25 women were slightly more likely to be lost to follow-up (the mean age at pregnancy was 27.7
26 years for all enrolled and 28.5 for mothers who were retained at 3 years). However, slightly more
27 women who smoked were retained over time (proportion increased from 33% to 35%) and there
28 was no evidence of difference in participation according to educational attainment. Overall,
29 demographics were similar across the three postpartum years and representative of the full RCT
30 cohort. Maternal HCC results at each time point are presented in Table 1; mean HCC was 6.2
31 (SD: 8.6), 5.7 (SD: 6.1) and 6.3 (SD: 6.4) pg/mg at 1-, 2- and 3-year follow-up, respectively.

1
2 Table 2 presents the cross-sectional relationships between each standardized continuous DASS
3 score and potential confounders with HCC at each time-point, shown as estimated linear
4 regression coefficients. Associations were not evident between any continuous DASS score and
5 HCC at any time point. Of the confounders assessed, season of hair collection was the only
6 variable for which there was evidence of an association with HCC; compared with summer,
7 HCC was lower during winter (1 year: β : -0.19; 2 years: β : -0.30) and spring (2 years: β : -0.24; 3
8 years: β : -0.24).

9
10 Table 3 presents the associations between each standardized DASS total and subscale score and
11 HCC across all time-points, shown as regression estimates for the multiply imputed GEE models
12 after adjustment for confounders. There was no evidence for associations between any
13 continuous DASS score and HCC across all time-points (Total: β : 0.02; 95% CI: -0.02 to 0.07;
14 Depression: β : 0.03, 95% CI: -0.02 to 0.07; Anxiety: β : 0.01, 95% CI: -0.04 to 0.06; Stress: β :
15 0.02, 95% CI: -0.03 to 0.06).

16
17 Table 4 presents the regression estimates for the multiply imputed GEE models assessing
18 associations between high symptom severity on DASS total and subscale scores and HCC; that
19 is, repeating the models presented in Table 3 using dichotomized instead of continuous DASS
20 scores. Amongst all DASS scores examined, only high depression symptom severity was
21 associated with higher HCC (Depression: β : 0.12; 95% CI: 0.01 to 0.24); there was no evidence
22 for associations between HCC and high symptom severity for any other DASS score across all
23 time-points (Total: β : 0.04; 95% CI: -0.07 to 0.15; Anxiety: β : 0.06, 95% CI: -0.04 to 0.16;
24 Stress: β : 0.02, 95% CI: -0.10 to 0.14). Results of the complete cases analyses (Supplementary
25 Tables 1-2) showed equivalent associations, except the association between high depression
26 symptom severity and HCC was attenuated (Depression: β : 0.09; 95% CI: -0.03 to 0.22)

27
28 Table 5 presents the regression estimates for the multiply imputed multivariable linear regression
29 models assessing associations between persistence of high DASS total and subscale scores and
30 maternal HCC at 3 years, after adjustment for confounders. There was no evidence for

1 associations between ‘intermittent’ or ‘persistent’ (compared to ‘never’) high scores on any
2 DASS scale with HCC at 3 years.

3

4 **4. DISCUSSION**

5 In this large cohort of Australian mothers, there was little evidence for associations between self-
6 reported mental health symptoms of depression, anxiety or stress and HCC at 1, 2 and 3 years
7 postpartum. We examined severity of maternal mental health symptoms as continuous symptom
8 scores, the presence of high symptom severity and persistence of high symptom severity over
9 time, to comprehensively investigate potential associations. Of these, only high depression
10 symptom severity, examined across all time-points using multivariate GEE, showed evidence of
11 an association with higher HCC. The limited evidence for associations between maternal mental
12 health symptoms and HCC mirror findings that Boeckel et al. (2017), Liu et al. (2016), Olstad et
13 al. (2016), Ouellette et al. (2015) and Ursache et al. (2017) have reported in other mother-child
14 cohorts. However, they do not align with two stand-alone findings within these studies; Ursache
15 et al. (2017) found higher maternal anxiety symptoms was associated with higher HCC, and
16 Ouellette et al. (2015) reported an inverse association between mothers’ self-reported stress and
17 HCC.

18

19 The limited evidence for associations between self-reported measures of mental health and HCC
20 also extends beyond maternal cohorts to the broader body of non-clinical adult cohorts. These
21 studies have commonly reported no associations between measures of depression, anxiety and
22 stress with HCC (Feller et al., 2014; Fischer et al., 2017; Gidlow et al., 2016; Karlén et al., 2011;
23 Smyth et al., 2016; Stalder et al., 2012; van Holland et al., 2012), with only one study reporting a
24 positive association between depression symptoms and higher HCC (Abell et al., 2016). Two
25 case-control studies have also reported no associations between perceived stress and HCC across
26 individuals with chronic pain and those without (Van Uum et al., 2008) or across long-term
27 unemployed and employed adults (Dettenborn et al., 2010). In contrast, in a pooled dataset of
28 multiple community-based studies (N=324, k=5), Wells et al. (2014) reported weak evidence for
29 a positive linear association between self-reported stress and HCC, and moderate evidence for an
30 inverse U-shaped association (lowest and highest stress scores associated with lower HCC).

1 However, such an association was not supported by the exploratory analyses conducted for the
2 current study (fractional polynomials, Supplementary Figures 1-4).

3
4 Mixed findings also exist for research examining mental health diagnoses in clinical cohorts and
5 HCC. Dettenborn et al. (2012) found that HCC was higher in a clinical patient group with
6 depression compared with controls. Similarly, Heinze et al. (2016) found patients presenting
7 with a mental health condition (which included depression, bipolar disorder, anxiety, eating
8 disorder or obsessive-compulsive disorder) had higher HCC compared with controls. However,
9 these findings are contrasted by Steudte-Schmiedgen et al. (2017), who found HCC was lower in
10 patients with depression, and Dowlati et al. (2010), who found no difference in HCC between
11 participants with and without depression. Steudte et al. (2011) found individuals with generalized
12 anxiety had lower HCC, while Steudte-Schmiedgen et al. (2017) found no difference in HCC
13 between those with generalized anxiety disorder and controls. The current study identified a
14 single association between high depression symptom severity (dichotomized) and higher HCC;
15 however, given the large number of analyses undertaken in the current study, this single
16 association may have been a chance finding.

17
18 While the focus of the current study was on mental health and HCC, associations between proxy
19 measures of socioeconomic status selected as potential confounders (mothers' education levels,
20 source of household income, count of screening survey risk factors, SEIFA) and HCC were also
21 examined. Given the known relationship between lower socioeconomic status and greater
22 psychological stress (Giallo et al., 2014; Price et al., 2018), other studies have hypothesized
23 associations between socioeconomic adversity and higher HCC. However, we found no evidence
24 of associations between these socioeconomic measures and HCC, supporting existing research
25 which indicates that evidence of these relationships is limited (Abell et al., 2016; Feller et al.,
26 2014; Fischer et al., 2017; Staufenbiel et al., 2015).

27
28 This study had several strengths. It is the first to use longitudinal data to investigate the
29 relationship between maternal self-reported mental health and HCC. Additionally, the study was
30 undertaken in a large cohort of postpartum women, where previous studies have been limited by
31 much smaller samples, e.g. Ouellette et al. (2015) analyzed a sample of 60 mothers, Olstad et al.

1 (2016) a sample of 30. Studies with small samples may lack statistical power to detect true
2 effects or may be more likely to find random effects, possibly contributing the inconsistent
3 findings to date. The current study's use of repeated longitudinal data in a large cohort mitigates
4 these possible sample size effects; not finding evidence for associations between mental health
5 symptoms and HCC was unlikely due to lack of statistical power. Recruiting women from a
6 community setting meant that this cohort was not exclusively a clinical population; yet, inclusion
7 based on women's experience of adversity, often including significant stress and coping
8 difficulties, meant this cohort represents a more heterogenous population in terms of mental
9 health symptoms than those that focus solely on community cohorts unselected for adversity or
10 mental health risk. While the DASS is not a diagnostic tool, it is one of the only broad-spectrum
11 self-report measures of mental health and frequently used in research with clinical and
12 population-level cohorts (Henry and Crawford, 2005). As described in the Methods, the validity
13 of the DASS has been previously demonstrated in comparison with other established mental
14 health measures such as the Edinburgh Postnatal Depression Scale and the Beck Depression
15 Inventory, amongst both postpartum and general adult cohorts (Cunningham et al., 2013; Osman
16 et al., 2012). ~~The DASS subscales have strongly correlated with other self-report mental health~~
17 ~~measures in Australian postpartum women, such as the Edinburgh Postnatal Depression Scale~~
18 ~~(EPDS, $r=0.84$), and the anxiety and depression subscales of Beck Depression Inventory (BDI-II;~~
19 ~~$r=0.82$ and 0.86 , respectively)(Cunningham et al., 2013).~~

20
21 The study had some limitations, mostly related to measurement. HCC was collected to measure
22 average cortisol production over a three-month period, whereas the DASS was self-reported for
23 the preceding week. An underlying assumption made by this study is that poor self-reported
24 mental health represents relatively stable mental health symptoms rather than transient mood,
25 allowing HCC and the DASS to be comparable as longer-term measures of the preceding
26 months. One study assessing the test-retest reliability of the DASS in a population of older
27 Australians over a 3-month period showed scores for each subscale were correlated across time
28 points (Gomez et al., 2014), which supports this assumption; although, studies have shown other
29 self-report measures of mental health (such as the EPDS) had low test-retest reliability in
30 postpartum women over a period of 2-3 weeks (Ballestrem et al., 2005; Morrell et al., 2009).
31 While evidence suggests medications have minimal influence on HCC (Stalder et al., 2017), this

1 evidence is not specific to mental health medications and it is a limitation that we were unable to
2 account for women who may have been taking medication to manage a mental health condition.

3 In addition, women in this study were recruited for their experience of adversity during
4 pregnancy and, therefore, likely to experience higher than average mental health symptoms.
5 While this targeted recruitment had the benefit of capturing a wide range of mental health
6 symptoms, it may have limited detection of associations by underrepresenting the healthiest
7 women with the least mental health symptoms. However, the comprehensive examination of
8 associations between mental health symptoms and HCC undertaken in the current study, both
9 cross-sectionally and across multiple time-points, was consistent in not finding evidence for
10 associations between mental health symptoms and HCC.

11
12 Identifying a biomarker that can provide some objective insight into mental health symptoms
13 assumes that measures like HCC and DASS are capturing overlapping aspects of stress and
14 mental health. However, it may be that self-report measures and HCC capture distinct aspects of
15 stress and mental health, such as the perceived and physiological. As such, the lack of
16 associations could be due to a lack of "psychoendocrine covariance" (Meyer and Novak, 2012), a
17 term used to describe the concept that psychological and physiological stress may not align. If
18 this is the case, findings from the current study suggest that HCC does not reflect self-reported or
19 perceived stress and mental health, but may still be a meaningful biomarker for the physiological
20 stress processes. Alternatively, even though cortisol is the end product of the stress response
21 system, it may be that HCC is not a useful biomarker for mental health symptoms or diagnoses
22 more broadly. This idea is supported by the aforementioned studies demonstrating inconsistent
23 evidence for associations between HCC and mental health diagnoses (Dettenborn et al., 2012;
24 Steudte-Schmiedgen et al., 2017; Steudte et al., 2011), and supported by the findings of the
25 current study. To resolve this uncertainty, future research could examine whether HCC can
26 provide insights into other aspects of mental health, such as functional and clinical impairments
27 and clinical progression of mental health diagnoses.

28
29 In conclusion, this study found insufficient evidence to support an association between a self-
30 report measure of depression, anxiety and stress symptoms and HCC in Australian mothers of
31 young children. When considered in the context of the existing literature, the results from this

1 study suggest that the physiological stress captured by HCC is not associated with self-reported
2 mental health symptoms and provides limited insight into the underlying physiological processes
3 associated with self-reported mental health symptoms.

1 REFERENCES

- 2 Abell, J.G., Stalder, T., Ferrie, J.E., Shipley, M.J., Kirschbaum, C., Kivimäki, M., Kumari, M.,
3 2016. Assessing cortisol from hair samples in a large observational cohort: The Whitehall II
4 study. *Psychoneuroendocrinology* 73, 148-156.
- 5 Australian Bureau of Statistics Census of Population and Housing, 2011. Socio-Economic
6 Indexes for Areas (SEIFA). Author, Australia, p. .
- 7 Ballestrem, C.L., Strauss, M., Kächele, H., 2005. Contribution to the Epidemiology of Postnatal
8 Depression in Germany-implications for the Utilization of Treatment. *Arch Womens Ment*
9 *Health* 8, 29-35.
- 10 Boeckel, M.G., Viola, T.W., Daruy-Filho, L., Martinez, M., Grassi-Oliveira, R., 2017. Intimate
11 partner violence is associated with increased maternal hair cortisol in mother-child dyads.
12 *Comprehensive Psychiatry* 72, 18-24.
- 13 Braig, S., Grabher, F., Ntomchukwu, C., Reister, F., Stalder, T., Kirschbaum, C., Genuneit, J.,
14 Rothenbacher, D., 2015. Determinants of maternal hair cortisol concentrations at delivery
15 reflecting the last trimester of pregnancy. *Psychoneuroendocrinology* 52, 289-296.
- 16 Braig, S., Stalder, T., Kirschbaum, C., Rothenbacher, D., Genuneit, J., 2019. The association of
17 potential stressors with hair steroids in parents with small children: The Ulm SPATZ health
18 study. *Psychoneuroendocrinology* 102, 37-43.
- 19 Chida, Y., Steptoe, A., 2009. Cortisol awakening response and psychosocial factors: a systematic
20 review and meta-analysis. *Biol Psychol* 80, 265-278.
- 21 Cunningham, N.K., Brown, P.M., Brooks, J., Page, A.C., 2013. The structure of emotional
22 symptoms in the postpartum period: is it unique? *J. Affect. Disord.* 151, 686-694.
- 23 D'Anna-Hernandez, K.L., Ross, R.G., Natvig, C.L., Laudenslager, M.L., 2011. Hair cortisol
24 levels as a retrospective marker of hypothalamic-pituitary axis activity throughout pregnancy:
25 comparison to salivary cortisol. *Physiol Behav* 104, 348-353.
- 26 Dettenborn, L., Muhtz, C., Skoluda, N., Stalder, T., Steudte, S., Hinkelmann, K., Kirschbaum,
27 C., Otte, C., 2012. Introducing a novel method to assess cumulative steroid concentrations:
28 increased hair cortisol concentrations over 6 months in medicated patients with depression.
29 *Stress* 15, 348-353.
- 30 Dettenborn, L., Tietze, A., Bruckner, F., Kirschbaum, C., 2010. Higher cortisol content in hair
31 among long-term unemployed individuals compared to controls. *Psychoneuroendocrinology* 35,
32 1404-1409.
- 33 Dowlati, Y., Herrmann, N., Swardfager, W., Thomson, S., Oh, P.I., Van Uum, S., Koren, G.,
34 Lanctôt, K.L., 2010. Relationship between hair cortisol concentrations and depressive symptoms
35 in patients with coronary artery disease. *Neuropsychiatr. Dis. Treat.* 6, 393-400.

- 1 Feller, S., Vigl, M., Bergmann, M.M., Boeing, H., Kirschbaum, C., Stalder, T., 2014. Predictors
2 of hair cortisol concentrations in older adults. *Psychoneuroendocrinology* 39, 132-140.
- 3 Fischer, S., Duncko, R., Hatch, S.L., Papadopoulos, A., Goodwin, L., Frissa, S., Hotopf, M.,
4 Cleare, A.J., 2017. Sociodemographic, lifestyle, and psychosocial determinants of hair cortisol in
5 a South London community sample. *Psychoneuroendocrinology* 76, 144-153.
- 6 Giallo, R., Cooklin, A., Nicholson, J.M., 2014. Risk factors associated with trajectories of
7 mothers' depressive symptoms across the early parenting period: an Australian population-based
8 longitudinal study. *Arch Womens Mental Health* 17, 115-125.
- 9 Gidlow, C.J., Randall, J., Gillman, J., Silk, S., Jones, M.V., 2016. Hair cortisol and self-reported
10 stress in healthy, working adults. *Psychoneuroendocrinology* 63, 163-169.
- 11 Goldfeld, S., D'Abaco, E., Bryson, H., Mensah, F., Price, A.M.H., 2018. Surveying social
12 adversity in pregnancy: The antenatal risk burden experienced by Australian women. *J. Paediatr.*
13 *Child Health* 54, 754-760.
- 14 Goldfeld, S., Price, A., Bryson, H., Bruce, T., Mensah, F., Orsini, F., Gold, L., Hiscock, H.,
15 Smith, C., Bishop, L., Jackson, D., Kemp, L., 2017. right@home: A randomised controlled trial
16 of sustained nurse home visiting from pregnancy to child age 2 years, versus usual care, to
17 improve parent care, parent responsiveness and the home learning environment at 2 years. *British*
18 *Medical Journal Open* 7, e013307.
- 19 Goldfeld, S., Price, A., Smith, C., Bruce, T., Bryson, H., Mensah, F., Orsini, F., Gold, L.,
20 Hiscock, H., Bishop, L., Smith, A., Perlen, S., Kemp, L., 2019. Nurse home visiting for families
21 experiencing adversity: a randomized trial. *Pediatrics* 143.
- 22 Gomez, R., Summers, M., Summers, A., Wolf, A., Summers, J.J., 2014. Depression Anxiety
23 Stress Scales-21: Factor structure and test-retest invariance, and temporal stability and
24 uniqueness of latent factors in older adults. *Journal of Psychopathology and Behavioral*
25 *Assessment* 36, 308-317.
- 26 Heinze, K., Lin, A., Reniers, R.L., Wood, S.J., 2016. Longer-term increased cortisol levels in
27 young people with mental health problems. *Psychiatry Res.* 236, 68-104.
- 28 Henry, J.D., Crawford, J.R., 2005. The short-form version of the Depression Anxiety Stress
29 Scales (DASS-21): construct validity and normative data in a large non-clinical sample. *British*
30 *Journal of Clinical Psychology* 44, 227-239.
- 31 Hilbert, K., Lueken, U., Beesdo-Baum, K., 2014. Neural structures, functioning and connectivity
32 in Generalized Anxiety Disorder and interaction with neuroendocrine systems: a systematic
33 review. *J. Affect. Disord.* 158, 114-126.
- 34 Huque, H., Carlin, J., Simpson, J.A., Lee, K.J., 2018. A comparison of multiple imputation
35 methods for missing data in longitudinal studies. *BMC Med. Res. Methodol.* 18, 168.

- 1 Karlén, J., Ludvigsson, J., Frostell, A., Theodorsson, E., Faresjö, T., 2011. Cortisol in hair
2 measured in young adults - a biomarker of major life stressors? *BMC Clinical Pathology* 11.
- 3 Kirschbaum, C., Tietze, A., Skoluda, N., Dettenborn, L., 2009. Hair as a retrospective calendar
4 of cortisol production-increased cortisol incorporation into hair in the third trimester of
5 pregnancy. *Psychoneuroendocrinology* 34, 32-37.
- 6 Kurtz, S., Levine, J., Safyer, M., 2017. Ask the question: screening for postpartum mood and
7 anxiety disorders in pediatric primary care. *Curr. Probl. Pediatr. Adolesc. Health Care* 47, 241-
8 253.
- 9 Liu, C.H., Snidman, N., Leonard, A., Meyer, J., Tronick, E., 2016. Intra-individual stability and
10 developmental change in hair cortisol among postpartum mothers and infants: Implications for
11 understanding chronic stress. *Dev Psychobiol* 58, 509-518.
- 12 Lovejoy, M.C., Graczyk, P.A., O'Hare, E., Neuman, G., 2000. Maternal depression and parenting
13 behavior: a meta-analytic review. *Clin. Psychol. Rev.* 20, 561-592.
- 14 Lovibond, P.F., Lovibond, S.H., 1995a. The structure of negative emotional states: Comparison
15 of the Depression Anxiety Stress Scales (DASS) with the Beck Depression and Anxiety
16 Inventories. *Behav. Res. Ther.* 33, 335-343.
- 17 Lovibond, S.H., Lovibond, P.F., 1995b. *Manual for the Depression Anxiety Stress Scales.* (2nd.
18 Ed.). Psychology Foundation, Sydney.
- 19 Lupien, S.J., McEwen, B.S., Gunnar, M.R., Heim, C., 2009. Effects of stress throughout the
20 lifespan on the brain, behaviour and cognition. *Nat Rev Neurosci.* 10, 434-445.
- 21 McEwen, B.S., Gianaros, P.J., 2010. Central role of the brain in stress and adaptation: links to
22 socioeconomic status, health, and disease. *Ann. N. Y. Acad. Sci.* 1186, 190-222.
- 23 Meyer, J.S., Novak, M.A., 2012. Minireview: Hair cortisol: a novel biomarker of hypothalamic-
24 pituitary-adrenocortical activity. *Endocrinology* 153, 4120-4127.
- 25 Morrell, J.C., Slade, P., Warner, R., Paley, G., Dixon, S., Walters, S.J., Brugha, T., Barkham, M.,
26 Parry, G.J., Nicholl, J., 2009. Clinical Effectiveness of Health Visitor Training in
27 Psychologically Informed Approaches for Depression in Postnatal Women: Pragmatic Cluster
28 Randomised Trial in Primary Care. *BMJ* 338, a3045.
- 29 Olstad, D.L., Ball, K., Wright, C., Abbott, G., Brown, E., Turner, A.I., 2016. Hair cortisol levels,
30 perceived stress and body mass index in women and children living in socioeconomically
31 disadvantaged neighborhoods: the READI study. *Stress* 19, 158-167.
- 32 Osman, A., Wong, J.L., Bagge, C.L., Freedenthal, S., Gutierrez, P.M., Lozano, G., 2012. The
33 Depression Anxiety Stress Scales—21 (DASS- 21): Further Examination of Dimensions, Scale
34 Reliability, and Correlates. *Journal of Clinical Psychology* 61, 1322-1338.

- 1 Ouellette, S.J., Russell, E., Kryski, K.R., Sheikh, H.I., Singh, S.M., Koren, G., Hayden, E.P.,
2 2015. Hair cortisol concentrations in higher- and lower-stress mother-daughter dyads: A pilot
3 study of associations and moderators. *Dev. Psychobiol.* 57, 519-534.
- 4 Price, A., Bryson, H., Menash, F., Kemp, L., Smith, C., Orsini, F., Hiscock, H., Gold, L., Smith,
5 A., Bishop, L., Goldfeld, S., 2018. A brief survey to identify pregnant women experiencing
6 increased psychosocial and socioeconomic risk. *Women and Birth* 32, e351-e358.
- 7 Prince, M., Patel, V., Saxena, S., Maj, M., Maselko, J., Phillips, M.R., Rahman, A., 2007. No
8 health without mental health. *The Lancet* 370, 859-877.
- 9 Shonkoff, J.P., Phillips, D.A., 2000. *From Neurons to Neighborhoods: The Science of Early*
10 *Childhood Development*. The National Academy Press, Washington, DC.
- 11 Smyth, N., Bianchin, M., Thorn, L., Hucklebridge, F., Kirschbaum, C., Stalder, T., Clow, A.,
12 2016. Hair cortisol concentrations in relation to ill-being and well-being in healthy young and
13 old females. *Int J Psychophysiol* 102, 12-17.
- 14 Stalder, T., Kirschbaum, C., 2012. Analysis of cortisol in hair - State of the art and future
15 directions. *Brain. Behav. Immun.* 26, 1019-1029.
- 16 Stalder, T., Steudte-Schmiedgen, S., Alexander, N., Klucken, T., Vater, A., Wichmann, S.,
17 Kirschbaum, C., Miller, R., 2017. Stress-related and basic determinants of hair cortisol in
18 humans: a meta-analysis. *Psychoneuroendocrinology* 77, 261-274.
- 19 Stalder, T., Steudte, S., Alexander, N., Miller, R., Gao, W., Dettenborn, L., Kirschbaum, C.,
20 2012. Cortisol in hair, body mass index and stress-related measures. *Biol Psychol* 90, 218-223.
- 21 Staufenbiel, S.M., Penninx, B.W., de Rijke, Y.B., van den Akker, E.L., van Rossum, E.F., 2015.
22 Determinants of hair cortisol and hair cortisone concentrations in adults.
23 *Psychoneuroendocrinology* 60, 182-194.
- 24 Staufenbiel, S.M., Penninx, B.W., Spijker, A.T., Elzinga, B.M., van Rossum, E.F., 2013. Hair
25 cortisol, stress exposure, and mental health in humans: a systematic review.
26 *Psychoneuroendocrinology* 38, 1220-1235.
- 27 Steudte-Schmiedgen, S., Wichmann, S., Stalder, T., Hilbert, K., Muehlhan, M., Lueken, U.,
28 Beesdo-Baum, K., 2017. Hair cortisol concentrations and cortisol stress reactivity in generalized
29 anxiety disorder, major depression and their comorbidity. *J. Psychiatr. Res.* 84, 184-190.
- 30 Steudte, S., Stalder, T., Dettenborn, L., Klumbies, E., Foley, P., Beesdo-Baum, K., Kirschbaum,
31 C., 2011. Decreased hair cortisol concentrations in generalised anxiety disorder. *Psychiatry Res*
32 186, 310-314.
- 33 Ursache, A., Merz, E.C., Melvin, S., Meyer, J., Noble, K.G., 2017. Socioeconomic status, hair
34 cortisol and internalizing symptoms in parents and children. *Psychoneuroendocrinology* 78, 142-
35 150.

- 1 van Holland, B.J., Frings-Dresen, M.H., Sluiter, J.K., 2012. Measuring short-term and long-term
2 physiological stress effects by cortisol reactivity in saliva and hair. *Int Arch Occup Environ*
3 *Health* 85, 849-852.
- 4 Van Uum, S., Sauvé, B., Fraser, L.A., Morley-Forster, P., Paul, T.L., Koren, G., 2008. Elevated
5 content of cortisol in hair of patients with severe chronic pain: a novel biomarker for stress.
6 *Stress* 11, 483-488.
- 7 Vreeburg, S.A., Hoogendijk, W.J., van Pelt, J., Derijk, R.H., Verhagen, J.C., van Dyck, R., Smit,
8 J.H., Zitman, F.G., Penninx, B.W., 2009. Major depressive disorder and hypothalamic-pituitary-
9 adrenal axis activity: results from a large cohort study. *Arch. Gen. Psychiatry* 66, 617-626.
- 10 Wells, S., Tremblay, P.F., Flynn, A., Russell, E., Kennedy, J., Rehm, J., Van Uum, S., Koren, G.,
11 Graham, K., 2014. Associations of hair cortisol concentration with self-reported measures of
12 stress and mental health-related factors in a pooled database of diverse community samples.
13 *Stress* 17, 334-342.
- 14 White, I.R., Royston, P., Wood, A.M., 2011. Multiple imputation using chained equations: Issues
15 and guidance for practice. *Stat. Med.* 30, 377-399.
16

Figure 1: Participant flow

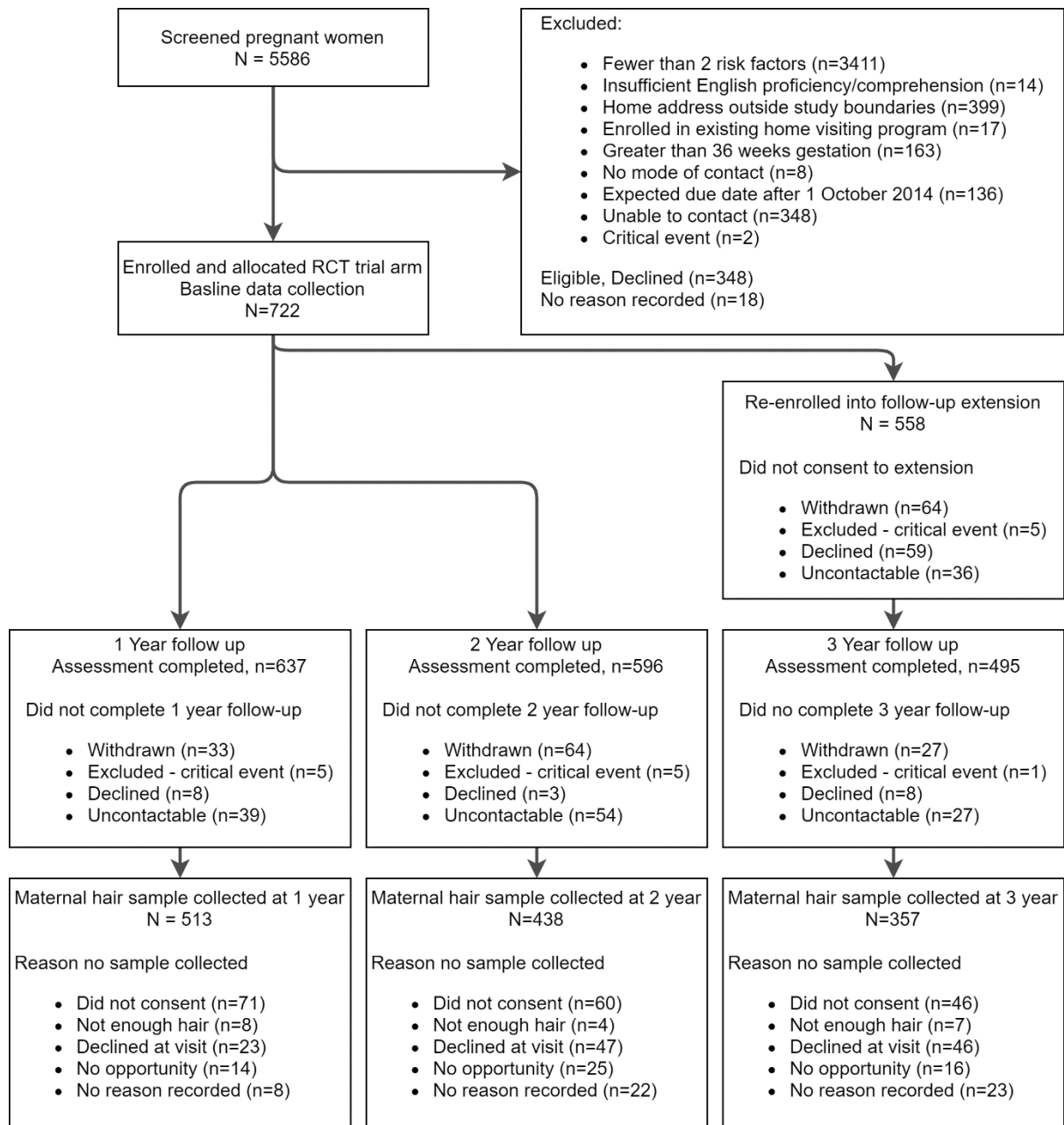


Table 1: Participant characteristics at pregnancy (baseline) and 1-, 2-, and 3-year follow-up

Participant Characteristics	Pregnancy	1 year	2 years	3 years
	N = 722 ^a	N = 513 ^b	N = 438 ^c	N = 357 ^d
	n (%)	n (%)	n (%)	n (%)
Hair Cortisol Concentration	N/A	6.2 (8.6), [0.5-58.6]	5.7(6.1), [0.2-55.7]	6.3 (6.4), [0.1-49.8]
DASS - Depression Score ^e	3.0 (3.5), [0-19]	2.3 (3.0), [0-21]	2.3 (3.1), [0-20]	2.9 (3.2), [0-16]
DASS - Anxiety Score ^e	3.5 (3.4), [0-21]	2.0 (2.8), [0-15]	2.1(2.8), [0-17]	2.2 (2.7), [0-14]
DASS - Stress Score ^e	5.4 (4.2), [0-21]	4.6 (3.7), [0-18]	4.7 (3.6), [0-19]	5.1 (3.8), [0-19]
DASS - Total Score ^e	12.0 (9.8), [0-57]	8.9 (8.3), [0-47]	9.1 (8.6), [0-56]	10.1 (8.5), [0-42]
Maternal age in years	27.7(6.2) [14.3-49.2]	27.9 (6.3), [14.6-46.2]	28.2 (6.3), [14.6-49.2]	28.5 (6.2), [15.1-46.2]
Smoking Status				
Yes	237 (32.8)	191 (37.3)	144 (33.1)	126 (36.0)
No	485 (67.2)	321 (62.7)	291 (66.9)	224 (64.0)
Education				
Did not complete high school	162 (25.0)	113 (24.1)	103 (24.4)	83 (24.1)
Completed high school or higher	486 (75.0)	355 (75.9)	319 (75.6)	262 (75.9)
Source of Household Income				
Full-time employment	334 (46.3)	229 (44.6)	200 (45.7)	156 (43.9)
Part-time or casual employment	71 (9.8)	49 (9.6)	40 (9.1)	38 (10.7)
Benefit, pension or no income	317 (43.9)	235 (45.8)	198 (45.2)	161 (45.4)
Area Socioeconomic disadvantage (SEIFA quintile)				
1 (greatest disadvantage)	296 (42.3)	209 (41.1)	167 (38.2)	144 (40.8)
2	57 (8.2)	46 (9.1)	31 (7.1)	29 (8.2)
3	264 (37.8)	193 (38.0)	168 (38.4)	123 (34.8)
4	60 (8.6)	46 (9.1)	49 (11.2)	38 (10.8)
5 (least disadvantage)	22 (3.1)	14 (2.8)	22 (5.0)	19 (5.4)
Number of screening survey risk factors	3.2 (1.3), [1-8]	3.1 (1.2), [2-8]	3.0 (1.2), [2-8]	3.0 (1.2), [2-8]
Season of Hair Collection				
Summer	N/A	123 (24.0)	93 (21.2)	70 (19.6)
Autumn	N/A	133 (25.9)	124 (28.3)	87 (24.4)

Participant Characteristics	Pregnancy N = 722 ^a	1 year N = 513 ^b	2 years N = 438 ^c	3 years N = 357 ^d
	n (%)	n (%)	n (%)	n (%)
Winter	N/A	143 (27.9)	119 (27.2)	93 (26.1)
Spring	N/A	114 (22.2)	102 (23.3)	107 (30.0)
Currently Pregnant				
Yes	722 (100.0)	12 (2.7)	30 (7.0)	19 (5.4)
No	0 (0.0)	440 (97.3)	398 (93.0)	334 (94.6)
Randomization status				
Program	363 (50.3)	267 (52.1)	224 (51.1)	179 (50.1)
Usual Care	359 (49.7)	246 (48.0)	214 (48.9)	178 (49.9)

Continuous variables given as mean (SD), [Range]. BRF: Brief risk factor, SEIFA: Socio-Economic Indexes for Areas.

N/A: Not applicable

^a N ranges from 648-722 due to missing data

^b N ranges from 452-513 due to missing data

^c N ranges from 422-438 due to missing data

^d N ranges from 345-357 due to missing data

^e Higher scores represent poorer mental health symptoms

Table 2: Cross-sectional univariate linear regressions between DASS scores and all potential confounders with maternal HCC, at 1-, 2- and 3-year follow-up.

Linear regression estimates of HCC ^a									
	1 year			2 years			3 years		
	β	95% CI	p-value	β	95% CI	p-value	β	95% CI	p-value
DASS Total ^b	0.04	(-0.03, 0.10)	0.29	0.01	(-0.06, 0.08)	0.84	0.08	(-0.01, 0.16)	0.08
DASS Depression ^b	0.03	(-0.04, 0.10)	0.37	0.02	(-0.05, 0.09)	0.56	0.07	(-0.02, 0.15)	0.12
DASS Anxiety ^b	0.02	(-0.05, 0.09)	0.51	-0.01	(-0.08, 0.06)	0.83	0.04	(-0.04, 0.13)	0.34
DASS Stress ^b	0.04	(-0.03, 0.11)	0.25	0.01	(-0.07, 0.07)	0.90	0.06	(-0.02, 0.15)	0.16
Maternal Age at Baseline	0.01	(0.00, 0.02)	0.12	0.01	(-0.01, 0.02)	0.37	0.01	(0.00, 0.02)	0.12
Smoking Status: Yes	-0.09	(-0.23, 0.05)	0.19	-0.06	(-0.21, 0.08)	0.40	0.02	(-0.15, 0.19)	0.81
Maternal Education: Completed HS	0.04	(-0.13, 0.20)	0.65	0.09	(-0.13, 0.20)	0.65	0.05	(-0.15, 0.25)	0.62
Source of Household Income									
Full-time employment	ref	-	-	ref	-	-	ref	-	-
Part-time or casual employment	0.11	(-0.13, 0.35)	0.36	0.02	(-0.23, 0.27)	0.86	-0.08	(-0.36, 0.21)	0.60
Benefit, pension or no income	0.13	(-0.01, 0.27)	0.08	0.03	(-0.12, 0.17)	0.73	0.02	(-0.15, 0.20)	0.79
Area Socioeconomic Disadvantage (SEIFA quintile)									
1 (greatest disadvantage)	ref	-	-	ref	-	-	ref	-	-
2	-0.11	(-0.36, 0.14)	0.37	0.07	(-0.21, 0.36)	0.61	-0.04	(-0.35, 0.28)	0.83
3	0.02	(-0.13, 0.17)	0.82	0.11	(-0.05, 0.27)	0.16	-0.06	(-0.25, 0.13)	0.55
4	0.15	(-0.09, 0.40)	0.22	0.07	(-0.16, 0.31)	0.54	0.01	(-0.27, 0.30)	0.94
5	0.07	(-0.35, 0.49)	0.74	0.09	(-0.24, 0.42)	0.58	-0.08	(-0.46, 0.30)	0.67
Number of screening survey risk factors	-0.02	(-0.07, 0.04)	0.50	-0.03	(-0.09, 0.02)	0.25	-0.06	(-0.12, 0.01)	0.11
Season of Hair Collection									
Summer	ref	-	-	ref	-	-	ref	-	-
Autumn	-0.15	(-0.34, 0.04)	0.13	-0.14	(-0.34, 0.05)	0.15	0.12	(-0.13, 0.36)	0.35
Winter	-0.19	(-0.38, -0.01)	0.04	-0.30	(-0.50, -0.11)	<0.001	-0.07	(-0.31, 0.17)	0.57
Spring	-0.13	(-0.33, 0.06)	0.19	-0.24	(-0.45, -0.04)	0.02	-0.24	(-0.48, -0.01)	0.04
Currently Pregnant: Yes	0.09	(-0.35, 0.53)	0.67	-0.03	(-0.31, 0.24)	0.81	-0.18	(-0.54, 0.18)	0.33

^a HCC is log transformed. ^b Standardized Score. HS: High School, BRF: Brief risk factor, SEIFA: Socio-Economic Indexes for Areas.

All estimates are controlled for randomization status.

Table 3: Adjusted multivariate GEE analysis of DASS total and subscale scores and maternal HCC, using multiply imputed data.

Continuous DASS symptom score ^a	GEE model estimates of HCC ^b		
	β	95% CI	p-value
Total score	0.02	(-0.02, 0.07)	0.34
Depression	0.03	(-0.02, 0.07)	0.23
Anxiety	0.01	(-0.04, 0.06)	0.69
Stress	0.02	(-0.03, 0.06)	0.41

^a Standardized Scores. ^b HCC is log transformed.

Multivariate GEE models all adjusted for maternal age at baseline, smoking status, maternal education (high school completion), source of household income, area socioeconomic disadvantage (SEIFA quintile), number of screening survey risk factors, season of hair collection and randomization status.

Table 4: Adjusted multivariate GEE analysis of dichotomized DASS total and subscale scores and maternal HCC, using multiply imputed data.

High DASS symptom severity ^a	GEE model estimates of HCC ^b		
	β	95% CI	p-value
Total score	0.04	(-0.07, 0.15)	0.50
Depression	0.12	(0.01, 0.24)	0.04
Anxiety	0.06	(-0.04, 0.16)	0.23
Stress	0.02	(-0.10, 0.14)	0.77

^a Top 15% DASS score compared to bottom 85% according to population reference ranges (Henry and Crawford, 2005). ^b HCC is log transformed

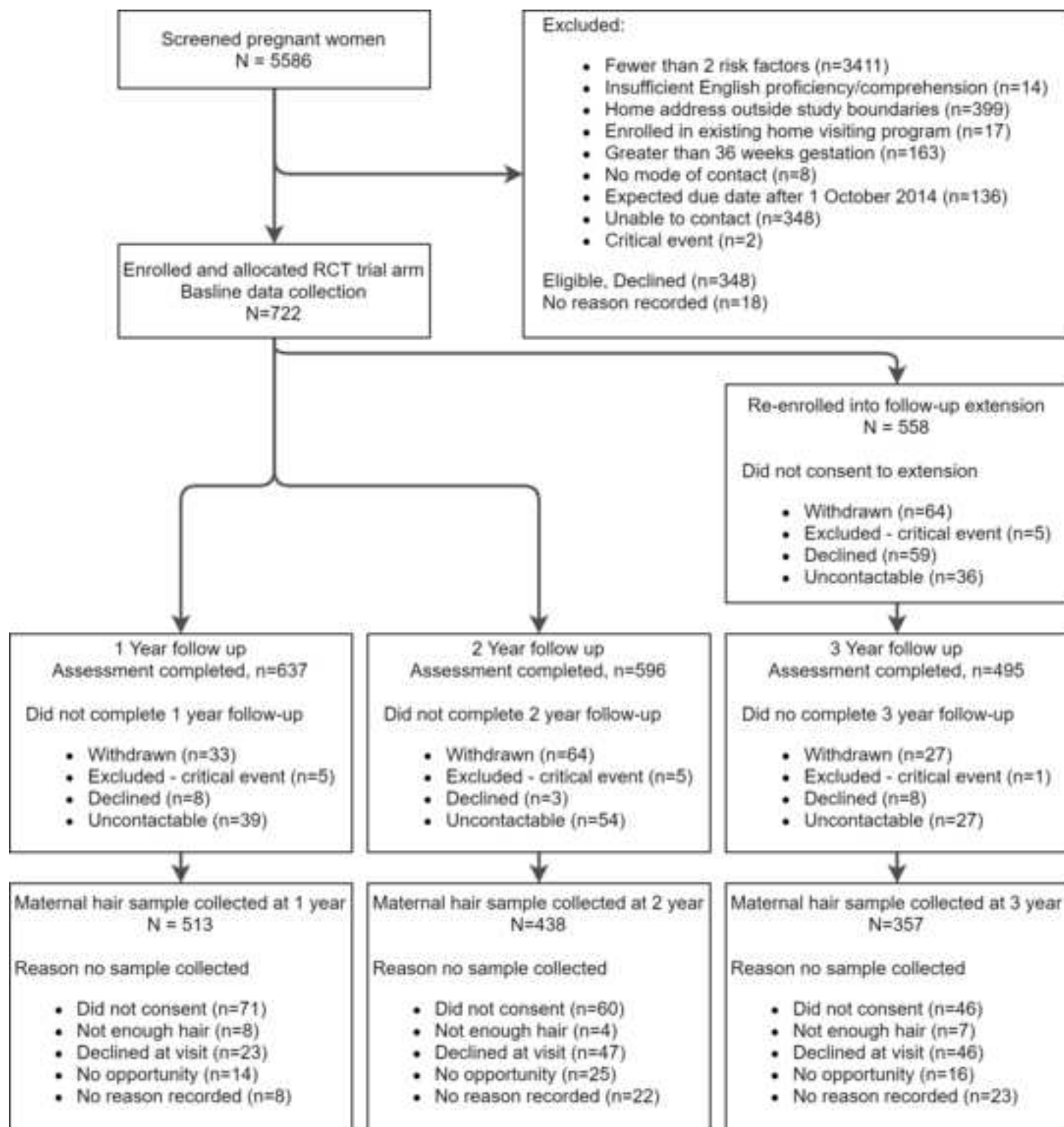
Multivariate GEE models all adjusted for maternal age at baseline, smoking status, maternal education (high school completion), source of household income, area socioeconomic disadvantage (SEIFA quintile), number of screening survey risk factors, season of hair collection and randomization status.

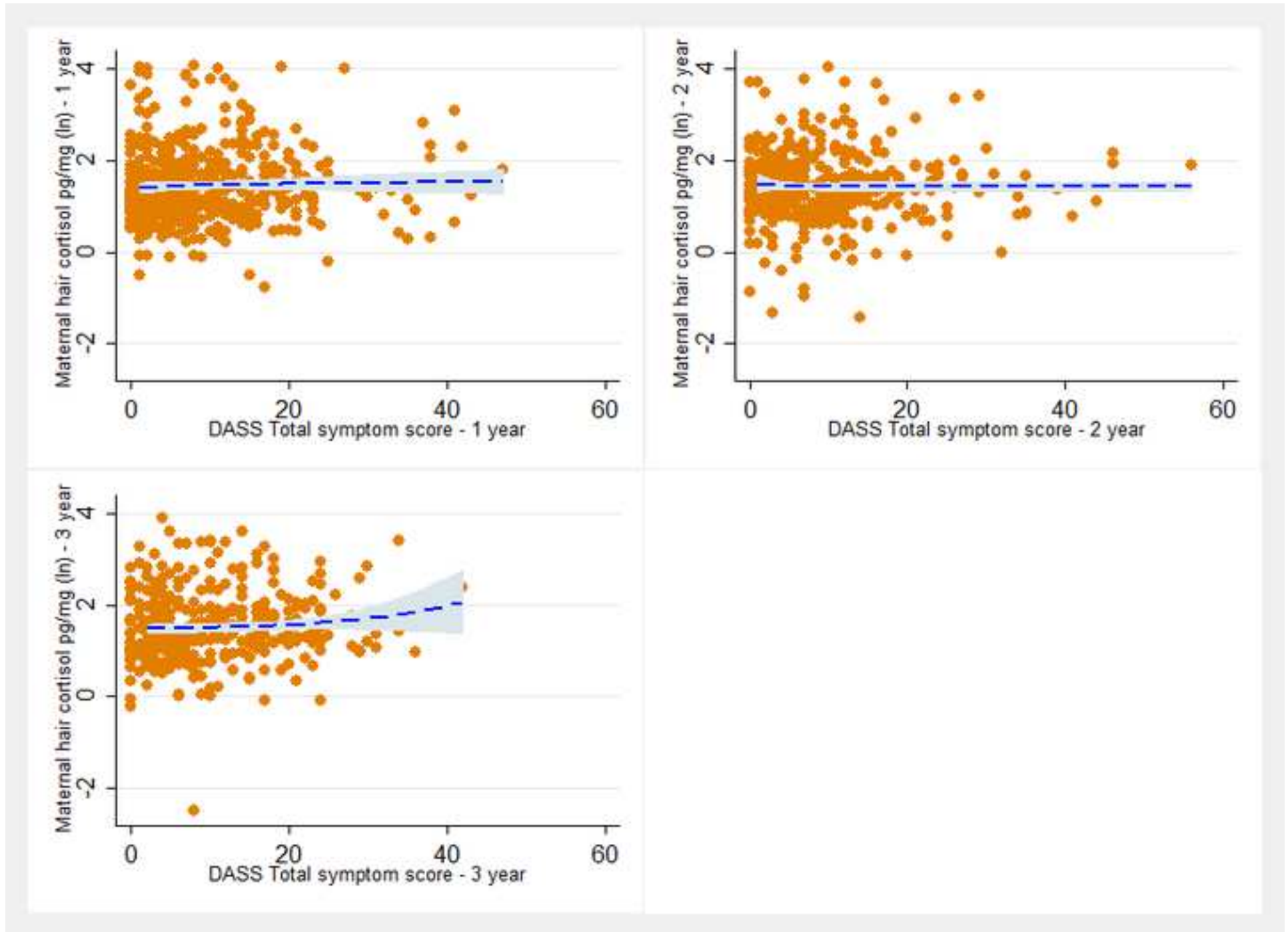
Table 5: Adjusted multivariate linear regression analysis of persistence of high DASS total and subscale scores and maternal HCC, using multiply imputed data.

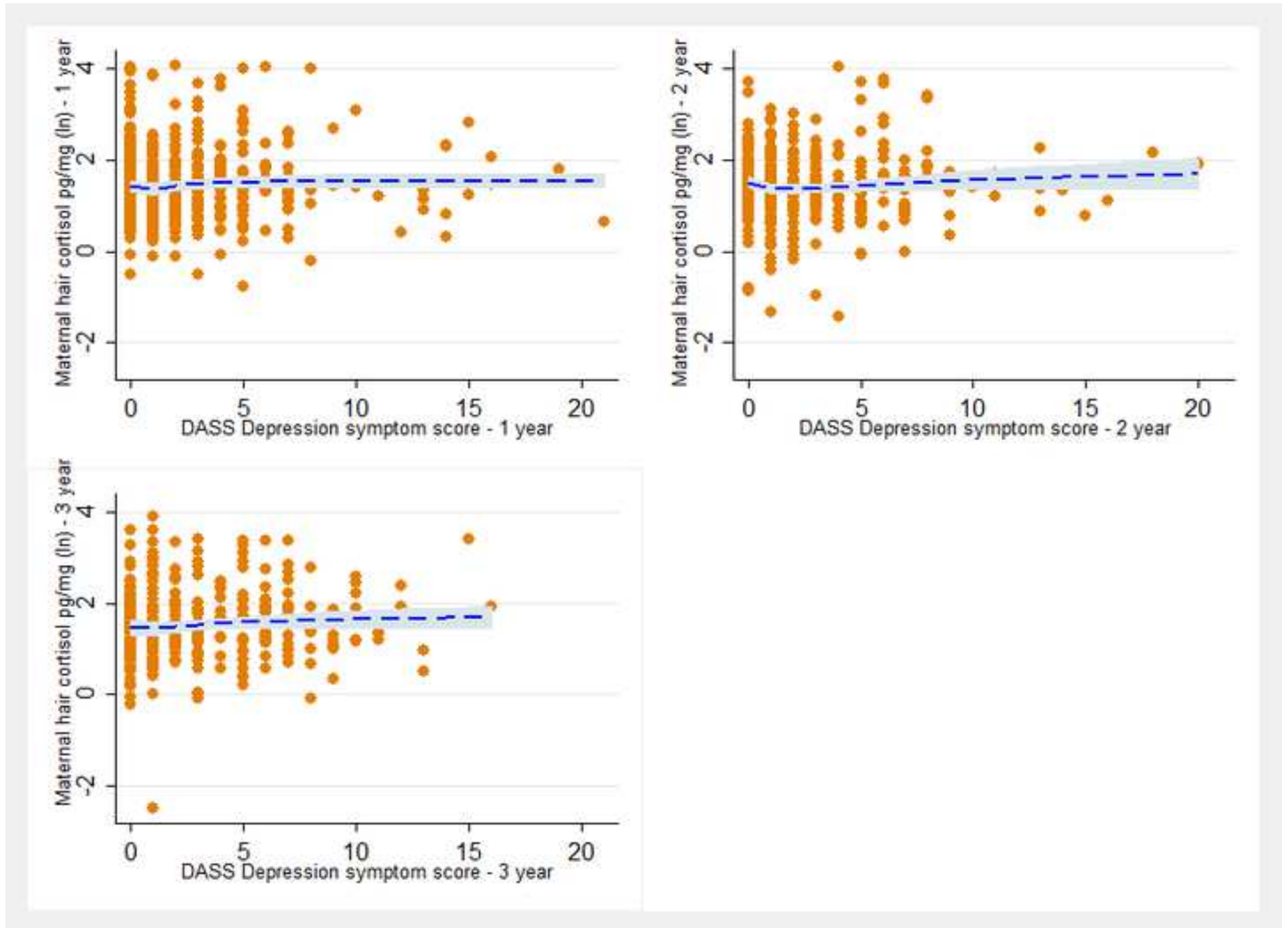
High DASS symptom severity ^a	N=546 %	Linear regression estimates of HCC ^b		
		β	95% CI	p-value
Total Score				
Never	71.0	ref	-	-
Intermittent	24.5	0.09	(-0.09, 0.27)	0.32
Persistent	4.5	0.06	(-0.29, 0.42)	0.74
Depression				
Never	72.9	ref	-	-
Intermittent	24.5	0.03	(-0.14, 0.21)	0.73
Persistent	2.6	0.24	(-0.19, 0.67)	0.27
Anxiety				
Never	58.9	ref	-	-
Intermittent	23.4	0.02	(-0.15, 0.19)	0.79
Persistent	8.7	0.10	(-0.26, 0.45)	0.59
Stress				
Never	74.2	ref	-	-
Intermittent	22.2	0.08	(-0.09, 0.25)	0.34
Persistent	3.6	0.19	(-0.27, 0.66)	0.41

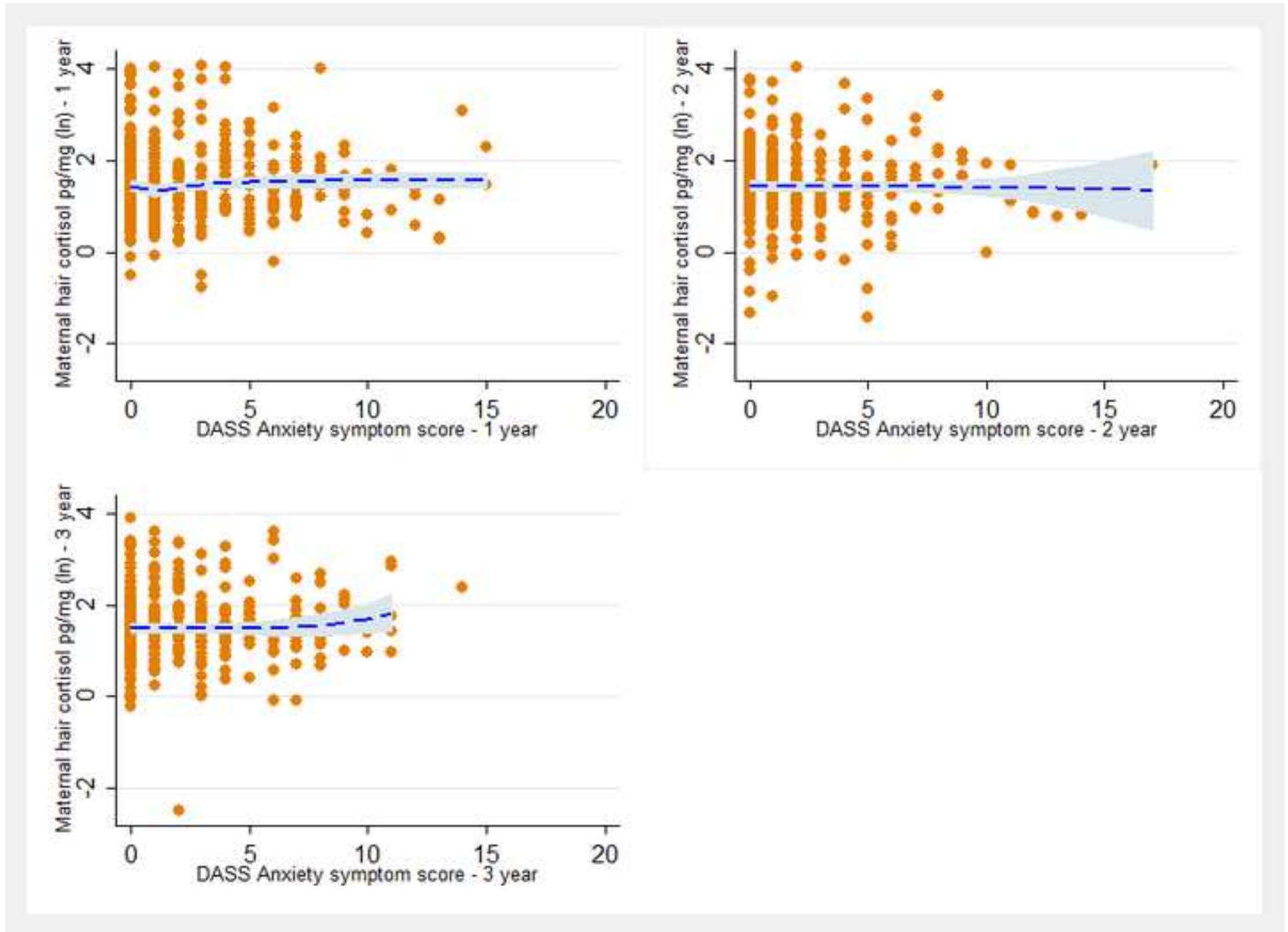
^a Top 15% DASS score versus bottom 85% according to population reference ranges (Henry and Crawford, 2005). ^b HCC is log transformed.

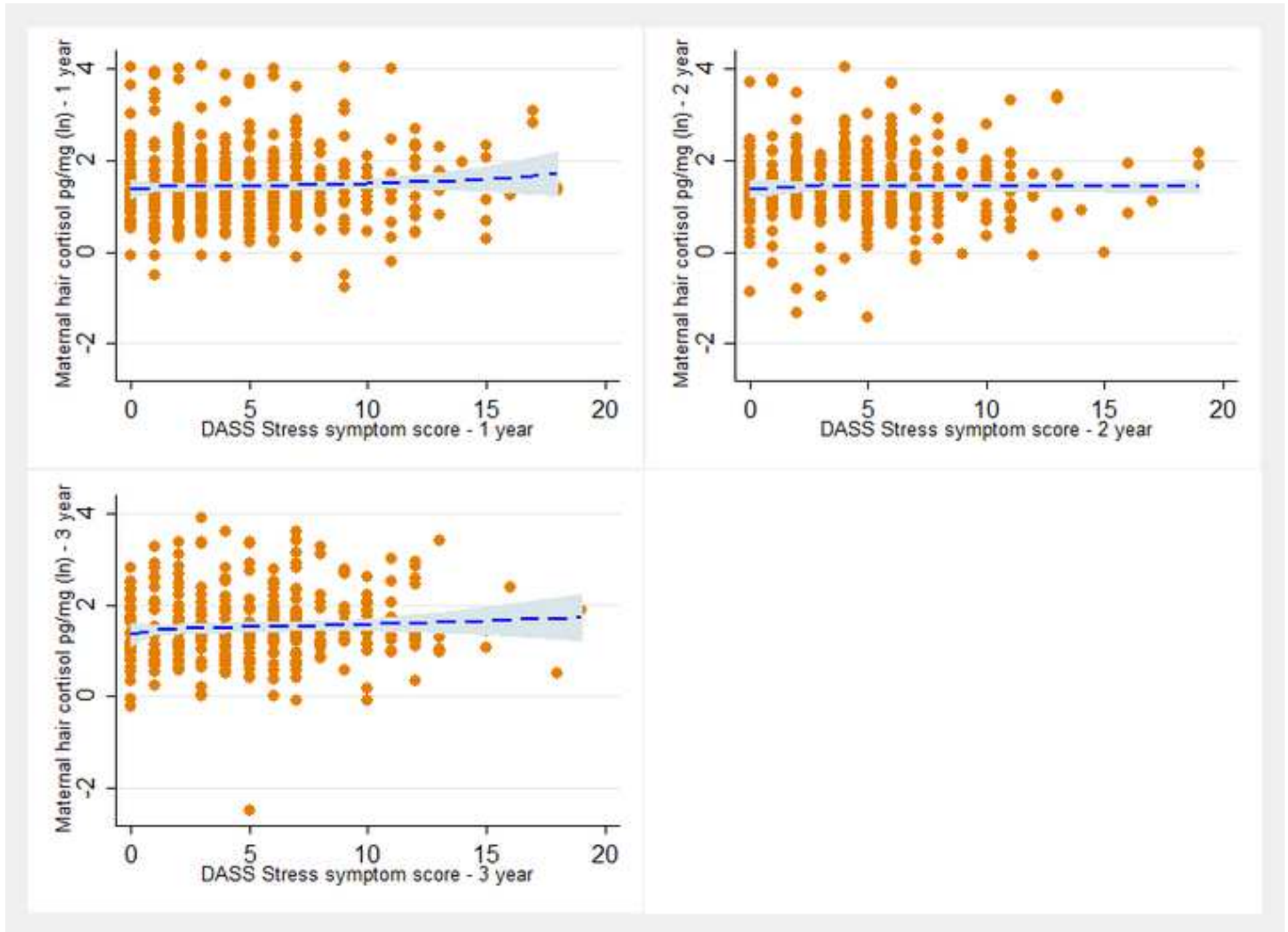
Multivariate linear regression models adjusted for maternal age at baseline, smoking status, maternal education (high school completion), source of household income, area socioeconomic disadvantage (SEIFA quintile), number of screening survey risk factors, season of hair collection and randomization status.











Conflict of interest statement

The authors have no conflicts of interest to declare.

Author statement

Contributors:

Dr Hannah Bryson: Conceptualization; Data curation; Investigation; Methodology; Project administration; Visualization; Writing - original draft; Writing - review & editing.

Ms Melissa Middleton: Conceptualization; Data curation; Formal analysis; Investigation; Methodology; Visualization; Writing - original draft; Writing - review & editing.

Dr Hamidul Huque: Formal analysis; Methodology; Supervision; Writing - review & editing.

Dr Fiona Mensah: Conceptualization; Formal analysis; Funding acquisition; Methodology; Supervision; Writing - review & editing.

Prof Sharon Goldfeld: Conceptualization; Funding acquisition; Resources; Supervision; Writing - review & editing.

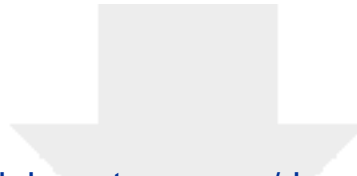
Dr Anna Price: Conceptualization; Funding acquisition; Investigation; Methodology; Project administration; Resources; Supervision; Roles/Writing - original draft; Writing - review & editing.

Role of the funding source: “right@home” is funded by the Victorian Department of Education and Training, the Tasmanian Department of Health and Human Services, the Ian Potter Foundation, Sabemo Trust, Sidney Myer Fund, the Vincent Fairfax Family Foundation, and the Australian National Health and Medical Research Council (NHMRC, Project Grant 1079418). Research at the MCRI is supported by the Victorian Government's Operational Infrastructure Support Program. HB is supported by an MCRI Research Group Scholarship and an Australian Government Research Training Program Scholarship. HH is supported by NHMRC Project Grant 1102468 and Centre for Research Excellence Grant

1035261 for the Victorian Centre for Biostatistics. FM is supported by NHMRC Career Development Fellowship 1111160. SG is supported by NHMRC Practitioner Fellowship 1155290.

The funding sources had no involvement in the study design; in the collection, analysis and interpretation of data; in the writing of the report; or in the decision to submit the article for publication.

Acknowledgements: The “right@home” sustained nurse home visiting trial is a research collaboration between the Australian Research Alliance for Children and Youth (ARACY); the Translational Research and Social Innovation (TReSI) Group at Western Sydney University; and the Centre for Community Child Health (CCCH), which is a department of The Royal Children's Hospital and a research group of Murdoch Children's Research Institute. We thank all families, the researchers, nurses and social care practitioners working on the right@home trial, the antenatal clinic staff at participating hospitals who helped facilitate the research, and the Expert Reference Group for their guidance in designing the trial.



[Click here to access/download](#)

Supplementary Material

JAD Supplementary Tables and Figures.docx

