

Minerva Access is the Institutional Repository of The University of Melbourne

Author/s:

Rummey, C;Corben, LA;Delatycki, M;Wilmot, G;Subramony, SH;Corti, M;Bushara, K;Duquette, A;Gomez, C;Hoyle, JC;Roxburgh, R;Seeberger, L;Yoon, G;Mathews, K;Zesiewicz, T;Perlman, S;Lynch, DR

Title:

Natural History of Friedreich Ataxia: Heterogeneity of Neurologic Progression and Consequences for Clinical Trial Design

Date:

2022-10-04

Citation:

Rummey, C., Corben, L. A., Delatycki, M., Wilmot, G., Subramony, S. H., Corti, M., Bushara, K., Duquette, A., Gomez, C., Hoyle, J. C., Roxburgh, R., Seeberger, L., Yoon, G., Mathews, K., Zesiewicz, T., Perlman, S. & Lynch, D. R. (2022). Natural History of Friedreich Ataxia: Heterogeneity of Neurologic Progression and Consequences for Clinical Trial Design. *Neurology*, 99 (14), pp.E1499-E1510. <https://doi.org/10.1212/WNL.000000000200913>.

Persistent Link:

<https://hdl.handle.net/11343/318258>

License:

[CC BY-NC-ND](#)

OPEN

Neurology[®]

The most widely read and highly cited peer-reviewed neurology journal
The Official Journal of the American Academy of Neurology



Neurology Publish Ahead of Print
DOI: 10.1212/WNL.0000000000200913

Natural History of Friedreich's Ataxia: Heterogeneity of Neurological Progression and Consequences for Clinical Trial Design

Author(s):

Christian Rummey, PhD¹; Louise A Corben, PhD^{2,3}; Martin Delatycki, MD^{2,3}; George Wilmot, MD⁴; Sub H Subramony, MD⁵; Manuela Corti, PT, PhD⁵; Khalaf Bushara, MD⁶; Antoine Duquette, MD⁷; Christopher Gomez, MD, PhD⁸; J Chad Hoyle, MD⁹; Richard Roxburgh, FRACP, PhD¹⁰; Lauren Seeberger, MD¹¹; Grace Yoon, MD¹²; Katherine Mathews, MD¹³; Theresa Zesiewicz, MD¹⁴; Susan Perlman, MD¹⁵; David R Lynch, MD, PhD¹⁶

This is an open access article distributed under the terms of the Creative Commons Attribution-NonCommercial-NoDerivatives License 4.0 (CC BY-NC-ND), which permits downloading and sharing the work provided it is properly cited. The work cannot be changed in any way or used commercially without permission from the journal.

Neurology[®] Published Ahead of Print articles have been peer reviewed and accepted for publication. This manuscript will be published in its final form after copyediting, page composition, and review of proofs. Errors that could affect the content may be corrected during these processes.

Corresponding Author: David R Lynch, lynchd@penmedicine.upenn.edu

Affiliation Information for All Authors: 1. Clinical Data Science GmbH, Basel, Switzerland; 2. Bruce Lefroy Centre for Genetic Health Research, Murdoch Children's Research Institute, Parkville, 3052, Victoria. Australia; 3. Department of Paediatrics, University of Melbourne. Parkville, 3052, Victoria. Australia; 4. Emory University, Atlanta; 5. Department of Neurology, McKnight Brain Institute, Room L3-100, 1149 Newell Drive, Gainesville, Florida 32611; 6. University of Minnesota; 7. Service de Neurologie, Département de Médecine, Unité de Troubles du Mouvement André-Barbeau, Centre Hospitalier de l'Université de Montréal (CHUM) and CRCHUM, 900 rue Saint-Denis, Montreal, QC, Canada, H2X 0A9; 8. University of Chicago; 9. Ohio State University; 10. University of Auckland; 11. University of Colorado; 12. Divisions of Neurology and Clinical and Metabolic Genetics, Department of Paediatrics, The Hospital for Sick Children, University of Toronto, Toronto, Ontario, Canada; 13. University of Iowa, Carver College of Medicine, Iowa City, Iowa, USA; 14. University of South Florida; 15. University of California Los Angeles; 16. Division of Neurology, Children's Hospital of Philadelphia

Equal Author Contribution:

Contributions:

Christian Rummy: Drafting/revision of the manuscript for content, including medical writing for content; Study concept or design; Analysis or interpretation of data

Louise A Corben: Drafting/revision of the manuscript for content, including medical writing for content; Major role in the acquisition of data

Martin Delatycki: Drafting/revision of the manuscript for content, including medical writing for content; Major role in the acquisition of data

George Wilmot: Drafting/revision of the manuscript for content, including medical writing for content; Major role in the acquisition of data

Sub H Subramony: Drafting/revision of the manuscript for content, including medical writing for content; Major role in the acquisition of data

Manuela Corti: Drafting/revision of the manuscript for content, including medical writing for content; Major role in the acquisition of data

Khalaf Bushara: Major role in the acquisition of data

Antoine Duquette: Drafting/revision of the manuscript for content, including medical writing for content; Major role in the acquisition of data

Christopher Gomez: Major role in the acquisition of data

J Chad Hoyle: Drafting/revision of the manuscript for content, including medical writing for content; Major role in the acquisition of data

Richard Roxburgh: Drafting/revision of the manuscript for content, including medical writing for content; Major role in the acquisition of data

Lauren Seeberger: Drafting/revision of the manuscript for content, including medical writing for content; Major role in the acquisition of data

Grace Yoon: Drafting/revision of the manuscript for content, including medical writing for content; Major role in the acquisition of data

Katherine Mathews: Drafting/revision of the manuscript for content, including medical writing for content; Major role in the acquisition of data

Theresa Zesiewicz: Drafting/revision of the manuscript for content, including medical writing for content; Major role in the acquisition of data

Susan Perlman: Drafting/revision of the manuscript for content, including medical writing for content; Major role in the acquisition of data

David R Lynch: Drafting/revision of the manuscript for content, including medical writing for content; Major role in the acquisition of data; Study concept or design; Analysis or interpretation of data

Figure Count:5

Table Count:2

Search Terms:[23] Clinical trials Observational study (Cohort, Case control), [58] Natural history studies (prognosis), [96] Mitochondrial disorders, [157] Mitochondrial disorders; see Genetics/Mitochondrial disorders (S), [163] Gait disorders/ataxia

Acknowledgment:

Study Funding:This study was funded by the Friedreich's Ataxia Research Alliance (FARS, curefa.org).

Disclosures:

C. Rummey reports consultancy fees from Santhera, Voyager, Novartis, Minoryx and Aavanti. M. Delatycki received grant funding from the National Health and Medical Research Council, Medical Research Future Fund and Friedreich Ataxia Research Alliance. M. Corti is a consultant for Janssen Research & Development, LLC and AavantiBio Inc. C. Gomez is

supported by ERT/APDM for the IDEA study. R. Roxburgh reports funding from Roche and Biogen for unrelated research. L. Seeberger reports research grant support from Parkinson Study Group, Huntington Study Group, FARA, Biohaven Pharmaceuticals and Neurocrine Biosciences. D.R. Lynch receives (outside the present study grants from) the NIH, FDA, FARA, MDA, Design, Retrotope, PTC, Reata, Stealth, Voyager and Novartis. The other authors report no relevant disclosures.

Preprint DOI:

Received Date:2021-11-05

Accepted Date:2022-05-16

Handling Editor Statement:Submitted and externally peer reviewed. The handling editor was Peter Hedera, MD, PhD.

ACCEPTED

Abstract

Background – The understanding of the natural history of Friedreich's ataxia has improved considerably recently, but patterns of neurologic deterioration are not fully clarified, compromising the assessment of the clinical relevance of effects and guidance for study design. The goal of this work was to acknowledge the broad genetic diversity of the population, especially with respect to younger individuals and to provide analyses stratified by age to guide population selection in future studies.

Methods – Based on a large natural history study, the Friedreich's Ataxia Clinical Outcome Measures study (FACOMS) that at the current data cut enrolled 1115 participants, followed up for 5287 yearly visits, we present results from the modified Friedreich's Ataxia Rating Scale and its sub scores. Secondary outcomes included the patient-reported activities of daily living scale, the timed 25-foot walk and the 9-hole peg test. Long-term progression was modeled using slope analyses within Early, Typical, Intermediate and Late Onset Friedreich's Ataxia. To reflect recruitment in clinical trials, short term changes were analyzed within age-based sub-populations. All analyses were stratified by ambulation status.

Findings – Long term progression models stratified by disease severity indicated highly differential disease progression, especially at earlier ages of onset. In the ambulatory phase, decline was driven by axial items assessed by the Upright Stability sub score of the mFARS. The analyses of short-term changes showed slower progression with increasing population age, as a result of decreasing genetic severity. Future clinical studies could reduce population diversity, inter-patient variability, and the risk of imbalanced treatment groups by selecting the study population based on the functional capacity (e.g., ambulatory status) and by strict age-based stratification.

Interpretation – Understanding of the diversity within Friedreich's ataxia populations and their patterns of functional decline provides an essential foundation for future clinical trial design including patient selection and facilitates the interpretation of the clinical relevance of progression detected in Friedreich's ataxia.

Introduction

Friedreich's ataxia (FRDA) is an autosomal recessive neurodegenerative disease caused by biallelic GAA triplet repeat expansions in intron 1 of the *FXN* gene, which encodes the mitochondrial protein frataxin. About 4-5% of patients are compound heterozygous for an expansion and a point mutation or deletion^{1,2}. Clinical presentation is diverse, largely reflecting variability in the size of the causal expanded GAA repeats. The length of the shorter expansion (GAA1) is sufficient to explain the distinction between patients with severe, early onset disease from those with milder, later onset disease, but is less predictive of differences within groups of similar age of onset (AOO), the most important predictor of clinical progression. Environmental and unidentified genetic modifiers explain about 50% of the variability in onset, consistent with the observation that epigenetic silencing of the *FXN* gene is similar for repeat lengths over 500, a number almost uniformly found among early onset individuals with biallelic expansions.³

AOO is accepted as the best individual predictor of genetic severity and correlates inversely with the length of GAA1. Several thresholds have been suggested to classify clinical presentation. AOO before or after an age of 15 years was proposed based on cross sectional correlation analyses⁴ and later supported in a large natural history cohort, the EFACTS study⁵. Subsequent longitudinal reports dropped this classification⁶, making it more difficult to understand the diversity in this cohort. However, an even earlier threshold (AOO <8 years or 0-7 years) is useful in interpreting neurological progression⁷, scoliosis⁸ and the occurrence

of diabetes mellitus⁹. For late onset FRDA¹⁰, qualitative phenotypic differences appear^{11,12} using AOO thresholds of 25 years¹³ and even 40 years¹⁴.

Based on these findings, a four-group stratification might prove useful: Early Onset (0-7 years), Typical Onset (8-14 years), Intermediate Onset (15-24 years), and Late Onset FRDA (>24 years). While transitions will always be fluid and might imperfectly represent the continuous nature of the causal defect, such grouping can help to identify subgroups with more homogeneous progression and support the understanding of clinical cohort structures beyond simple summary statistics.

Progression in FRDA is primarily assessed through rating scales, such as the Scale for Assessment and Rating of Ataxia (SARA)¹⁵ and the modified Friedreich's Ataxia Rating Scale (mFARS)¹⁶. These instruments capture most patient-relevant features and are sensitive to change^{6,17}, but they rely heavily on axial function, balance and walking (35% in SARA and 34% mFARS). This reshapes the functional sources of decline after loss of ambulation (LoA), and relative values of change cannot be readily compared.

For FRDA, LoA provides a milestone in the progression of FRDA that can serve as an anchor to assess clinical benefit. The most severely affected individuals become wheelchair-dependent at a median time of 11 years after onset of the first symptoms;¹⁸ while further analyses will be necessary, in principle any deferral of this time constitutes a clinically relevant benefit. Patients with FRDA commonly live for several decades after LoA.^{19,20}

In view of the above, we aimed to further identify genetic and initial clinical features of FRDA useful for stratification in clinical trials, characterize the loss of long-term function during disease progression by severity group and ambulation status, and provide selection criteria and endpoint sensitivity in age-based clinical trial-like cohorts. The latter analyses are particularly important, since our study covers all age ranges of interest for clinical research.

Materials and methods

Participants and outcomes

The Friedreich's Ataxia Clinical Outcome Measures Study (FACOMS, NCT03090789) has continuously enrolled participants since 2003¹⁷, with genetic confirmation of the disease by assessment of the GAA repeat length as effectively the only inclusion criteria. Follow-up time is not limited. To exclude influence of the COVID pandemic, we used data collected prior to April 28th, 2020. Evaluations were conducted at 15 international centers (**eTable 1**). The primary outcome measure was the mFARS and its sub scores¹⁶, derived from the complete FARS exam^{21,22}, with the following secondary outcomes: a patient reported activities of daily living scale (FA-ADL, 9 items scored 0-4 each for a maximum disability of 36 points)¹⁷; two direct functional measures: the timed 25 foot walk (T25FW) and 9 hole peg test (9HPT). Both timed measures are reported as velocities (m/s and 1/min "peg boards per minute", respectively), and observations were excluded once a patient became unable to perform the test due to disease progression (unable thresholds were set to 180s for T25FW and 350s for the 9HPT, occurrence <0.5%); and the functional disease staging (FDS), used for the overall functional status of participants and to derive ambulation status. Notably, LoA in FRDA is not a temporary isolated event but a process that spans several years even in the most severely affected patients. As previously¹⁸, we defined the time of LoA as the *first* attainment of a score of 5 on the FDS, defined as "wheelchair bound"¹⁸, i.e., considered unable to walk at all and uses wheelchair for essentially all movement.

Statistical analyses

Disease progression over time was analyzed using two different methods to recognize different temporal contexts. FACOMS allows assessment of broad disease evolution over decades and all stages. For the first analysis, we performed linear mixed effects modelling (using restricted maximum likelihood, REML) with random effects on slope and intercept, as well as the Baseline value and AOO group (0-7years, 8-14years, 15-24years, >24years) as fixed effects. Time was expressed in years since the baseline visit (days divided by 365.25). Progression slopes were derived from the time*AOO group interaction.

In contrast, clinical trials are typically restricted to relatively short follow-up periods, where long-term predictors such as AOO are potentially less influential. Therefore, in a second type of analysis, mean changes in 1- or 2-year intervals were analyzed, stratified by current age group. Both children and adults were separated into three age-brackets each (<8 years, 8-11 years, 12-15 years, as well as 16-24 years, 25-40 years and >40 years). These age groups were selected to cover ranges typically used in FRDA, as shown by important historical clinical trials, e.g. IONIA²³ (drug: idebenone, age range 7-17 years), STEADFAST²⁴ (interferon gamma, 10-26 years) and MOXIE (omaveloxolone). The latter study recruited patients aged 16-40 years, and results indicate that a majority was below <25y of age²⁵. Within each age bracket, yearly changes were analyzed using descriptive means and estimates from linear mixed effects models using repeated measures. AOO (continuous) and within age-group baseline value were used as independent covariates. The sensitivity of selected endpoints was assessed using standard response means (SRMs, mean change divided by standard deviation of change).

Data was used as available, and no missing data was imputed. Visits from early/pre-symptomatic individuals (mFARS<20 points) were excluded (n=118, 2.2%). mFARS, its sub

scores, as well as ADL values were computed only when all items were available, leading to 111 visits (2.1%) with missing FARS data. No pre-specified hypothesis was made; all statistical tests were performed two sided and interpreted in a descriptive, exploratory way, with p -values <0.05 considered statistically significant. Statistical calculations were performed in R (R Core Team, 2021) with lme4²⁶ for mixed effect models. Further information on data collection, statistical methodology and analysis is given as supplementary material.

Standard protocol approvals, registrations, and patient consents

Written informed consent was obtained from all patients or their authorized surrogates at enrollment and renewed at every yearly visit. The FACOMS study was approved by the local ethics committee of each participating center and is registered with ClinicalTrials.gov (NCT03090789).

Data availability

The FACOMS, including relevant study information is part of the Friedreich's Ataxia Integrated Clinical Database (FA-ICD), available on appropriate request at The Data Collaboration Centre (DCC) of the Critical Path Institute (C-Path).

Results

Demographics and follow-Up time

Among 1115 individuals with FRDA, 324 had Early Onset (0-7 years, 29%), 438 had Typical Onset (8-14 years, 39%), 234 had Intermediate Onset (15-24 years, 21%) and 119 had Late Onset (>24 years, 11%, **Table 1**). The proportion of compound heterozygous individuals (carrying a point mutations or deletion) was 5.1%, slightly higher in earlier onset groups. Depending on the type of mutation, these patients may show atypical clinical features and were excluded from analyses beyond demographics^{27,28}. Progression properties of this group will be reported elsewhere. Median follow up time was five (IQR 3-10) years, relatively balanced over all groups. At enrollment, 70.0% of patients were ambulatory, which decreased to 49% at the most recent visit. Further analyses of follow-up time by ambulation status are provided in **eTable 2**.

The number of GAA1 repeats predicts AOO and, as reported in the European EFACTS study, AOO occurs 2.3 years earlier per 100 repeats⁵. Analogous regression of AOO as a function of GAA1 showed that on average for the whole population, onset was 2.73 years earlier for every 100 repeats ($r^2=0.46$, 95% CI [CI]: -2.91, -2.55, **Figure 1**). The difference may reflect the smaller proportion of younger patients in EFACTS, since the correlation differed between onset groups. Of note, a piecewise regression analysis indicates relatively poor fit statistics within-onset group: The correlation was highest for Late Onset (-1.76 years/100 repeats, $r^2=0.14$, CI: -2.60, -0.93), lower for Intermediate Onset (-0.45 years/100 repeats, $r^2=0.12$, CI: -0.61, -0.28) and Typical Onset (-0.26 years/100 repeats, $r^2=0.05$, CI: -0.38, -0.15) and insignificant for Early Onset (-0.01 years/100 repeats, $r^2=0.00$, CI: -0.10, 0.13). Similar modelling using polynomial functions did not improve the overall fit, and further

segmentation of the Late Onset group did not change the overall relation in this subgroup (data not shown).

Structure of the FACOMS cohort

FACOMS is a continuously enrolling study, which complicates the analysis of the reasons for discontinuation, as dropouts occur frequently at later disease stage without the possibility to clarify a reason. This should however influence the results minimally in the ambulatory phase. Also, follow-up time is not limited and differs widely. The longest follow up time was 18 years (2 participants), 63 had 15 years or more years, 254 had 10 years or more. Overall, 13% of in-between visits were missing, independent of genetic disease severity, but influenced by follow-up time (5.8% for 5 years or less, 22.6% for 6-10y, and 20.9% for 11-15y). The influence of intermittent missing data on age-based analyses of change is again difficult to interpret, but it should have minor impact on the long-term slope-based analyses.

The effect of genetic disease severity as defined by AOO on *current age group* becomes evident from **Figure 2**. At young ages populations are dominated by severe, fast progressing Early Onset individuals, while from around 12 years of age onward Typical Onset FRDA predominates. Intermediate Onset and Late Onset groups only play a significant role in cohorts above 25 years. For the ambulatory disease phase, more detailed summary statistics by age-group are provided in **eTable 3**.

Baseline results

Baseline results were calculated by AOO group and ambulation status at enrollment. In general, Early Onset individuals had higher mFARS and component scores, (e.g., mFARS total and FARS B) at baseline, independent of ambulation status, while other groups had scores in a narrow range (**Table 2**). Interestingly, baseline results on functional tests behaved

differently; baseline T25FW speeds were slower in the milder (but older) patient groups (intermediate and late onset), whereas 9HPT speed was greater in these types of patients.

Disease Progression by onset group

Disease progression was faster with earlier AOO, regardless of the disease phase. For mFARS, in the ambulatory phase, Early Onset patients declined almost 50% faster than Typical Onset (2.62, CI: 2.35, 2.90 vs 1.83, CI: 1.60, 2.06 points/year) and about twice as fast the Intermediate Onset group (2.62, CI: 2.35, 2.90 vs 1.24, CI: 0.95, 1.53 points/year). Late Onset was very similar to Intermediate Onset (1.18 vs 1.24 points/year, **Figure 3A**). In the ambulatory phase across all onset groups, decline in the mFARS score was driven by the Upright Stability Score (USS or FARS E, **Figure 3B**), with the Lower Limb sub-score (FARS C) contributing most of the remaining decline. An additional illustration of all mFARS scores used in this analysis is provided in **eFigure 1**.

The yearly progression in the USS differed by trend between Early Onset and Typical Onset (difference 0.21 points/year, CI: -0.00, 0.43), but the difference was less pronounced than for the total mFARS score. In addition, compared to Typical Onset, individuals with Intermediate Onset and Late Onset declined slower in the USS (-0.51, CI: -0.73, -0.29 and -0.67, CI: -0.94, -0.40 points/year). With regards to FARS B (upper limb coordination), during the ambulatory phase, only Early Onset individuals declined (-0.31 points/year, CI: 0.12, 0.50); in all other onset groups average progression was not different from 0.

These trends changed during the non-ambulatory phase (**Figure 3**), as balance and gait functions are lost and FARS B (upper limbs) together with FARS C (lower limbs) drive decline. Overall decline in mFARS was lower and differences by onset group were less evident and usually not statistically significant, despite the large numbers of observations.

The bulbar function sub score (FARS A) contributes only 5 (5%) points to the total, and only minimally affects total progression. It declines mostly in Early Onset and Typical Onset with higher changes during the non-ambulatory phase.

Secondary outcome measures supported this pattern of progression. Decline in ADL did not differ among ambulatory Early Onset and Typical Onset individuals (difference 0.01 points/year, CI: -0.19, 0.21), but was lower in Intermediate Onset and Late Onset participants (difference -0.31 points/year, CI: -0.52, -0.10 and -0.56 points/year, CI: -0.82, -0.31, difference vs Typical Onset respectively, **eTable 4**). Similarly, progression in both the 9HPT test and T25FW was slower with older AOO. In contrast to upper limb function (FARS B), the decline in the 9HPT was consistently greater throughout the ambulatory phase when stratified by AOO groups. The 9HPT is the only outcome examined that showed relatively similar decline prior and post LoA.

Analyses of yearly changes by age group

Mean annual changes in the mFARS score were highest in the youngest age group (<8 years) and steadily decreased with age (**Figure 4A**). However, the characteristics of decline in total mFARS were different in younger patients. Specifically, in the age group <8 years and to a lesser extent in 8-11 years, upper limb scores (FARS B, **Figure 4C**) contributed substantially to the overall decline. This result was consistent with the estimated decline for the Early Onset group (shown above), who are predominantly enrolled at young ages. Upper limb (FARS B) scores also declined in the age-group 8-11 years, but not after reaching 12 years of age. Mean USS changes were lower in children <8 years but showed a consistent reduction in decline in all age groups after 8y. Of note, the <8 years group is a very small subgroup (39 individuals, with 25 contributing changes at age <8 years), and confidence intervals in most endpoints overlapped with 0.

The secondary functional tests were largely consistent with the corresponding mFARS sub scores. For example, the ADL behaved similarly to the USS, but with greater variability (**Figure 4D**). However, in contrast to upper limb function (FARS B), the 9HPT results continued to change in age groups >11 years albeit at a slower progression in the older age groups, following the pattern of the total mFARS score. On the other hand, the T25FW declined fastest in the 12-15 years age group, but at older ages progression behaved similarly to the USS.

Mixed model results confirmed that AOO predicted the level of change in disease progression in certain situations, but also that it was not a significant predictor in all situations. AOO was a highly statistically significant covariate for most mFARS components in the 16-24 years age group (**eTable 5**). The AOO covariate also significantly influenced ADL scores and timed tests (T25FW and 9HPT), but not as much as within the rating scale models. Similar results were found for direct functional measures (for the non-ambulatory phase see eTable 6).

Endpoint sensitivity was expressed as standard response means (SRMs: mean change divided by standard deviation of change) for selected endpoints in the ambulatory population (**Figure 5**). By this measure, total mFARS and USS (FARS E) were the most sensitive rating scales, while the most sensitive markers overall were secondary functional outcome measures especially the 9HPT.

Discussion

We summarize the measurement of neurologic progression in a large natural history study of FRDA, examining in detail which functions are captured relative to the disease stage and current age. Long-term progression analysis indicates differential profiles based on age at onset and comprehensive, age-based analysis establishes short-term population-based disease progression patterns. These previously unavailable analyses should aid patient selection for clinical studies. Tight age-based stratification clarifies the utility of the most commonly used predictors of progression, GAA1 and AOO. Both correlate well with long-term progression in the full natural history study context but are less useful within narrower age ranges. GAA1 strongly predicts genetic severity within Late Onset FRDA, but to a lesser degree with longer GAA1 repeats and earlier onset disease; in Early Onset patients there is no statistical relationship. In these individuals the theoretical change of genetic severity per year of AOO should be considerable, but the large variability obscures the relationship. Importantly, our analysis focused on clinical features and subgroups, and it is known that AOO depends on a range of factors, such as frataxin levels and DNA methylation patterns.³

In ambulatory patients, the major driver of decline in mFARS scores were axial functions as assessed in the USS/FARS E. These functions also dominate other rating scales (ICARS and SARA) and their progression differs greatly before and after the 15 year-threshold⁴ of AOO, a finding that this study strongly corroborates. The T25FW results confirm this pattern, and the ADL scores behave accordingly.

Appendicular function measures from FARS B plateau during adolescence that may reflect developmental gains at this age (see below). Differences in lower limb function loss are minor during both phases, reflected in a lower sensitivity (high variability at slow progression) of FARS C. However, FARS C non-ambulatory baseline values are 35% higher

when comparing Early Onset vs Late Onset (**Table 2**), indicating that individuals with milder disease retain more of this functionality beyond LoA, and that most of this function is lost after enrollment.

As well as reflecting genetic severity, differences in disease progression between AOO-groups may indicate an interaction between disease processes and underlying development stages. Younger, more severely affected individuals are expected to decline faster^{4,17,7,6}, but our results attribute this decline not to more rapid axial function loss, but to a specific pattern of early deterioration of appendicular function as noted in FARS B. This pattern is not seen in the Typical Onset and Intermediate Onset groups before LoA. In the Early Onset group, this may result from disease onset prior to puberty and indicate an interaction between neurodevelopment and neurodegeneration. Thus, in addition to influencing speed of progression, GAA1 length may influence phenotypic severity through effects on neuronal development and maturation. Such an interplay has been shown for other disorders (e.g., schizophrenia²⁹, Parkinson's disease³⁰), but may be more prominent in FRDA, as the most severe patients are diagnosed several years before puberty, when developmental milestones are still being attained.³¹

This pattern has implications for participant selection in clinical trials: a shift of neurological deterioration from axial to appendicular function below a certain age confounds the interpretation of clinical meaningfulness of these outcomes. Therefore, based on our data, 8 years may be an appropriate lower age limit for the current measures in FRDA, consistent with the finding that rating scales are potentially unreliable at ages <8 years in healthy subjects³². Importantly, our results are based on relatively few patients diagnosed before the age of 8 years (**Figure 2**); they may not play a dominant role in most clinical trials.

Clinical studies in rare diseases like FRDA may always span a range of ages, especially when focusing on individuals within a limited range of functional capacity (e.g., sufficient ability to ambulate). Expanding age cut-offs allows inclusion of more individuals with a less aggressive course and at an earlier stage of their disease, potentially at the expense of outcome sensitivity. This will increase the diversity of the population, and appropriate stratification can ensure balanced treatment arms. Neither GAA1 nor AOO readily define such stratifications in a standardized manner. Instead, our results suggest that genetic diversity (the influence of AOO) can be limited by age-dependent stratification and by limiting patients' functional range. The latter is in practice already applied in most trials. As target ages might vary substantially, careful re-assessment of these results for any particular population and intervention may be needed. For typical trial sizes (e.g., 100 participants), stratification by median age (or age tertiles at larger sizes) should limit the risk of imbalanced treatment arms. Limitations emerge for very young populations, as these most rapidly progressing individuals show the highest variability on current measures, and AOO being at best a modest predictor of progression.

Our results can also refine endpoint selection. In particular, the change in USS/FARS E is very similar at the group level for ages 8-11 years and 12-15 years, and populations up to 24 years decline only slightly less fast. This makes USS a potentially superior endpoint in ambulant populations over the total mFARS score, due to high changes in upper limb function/FARS B that diminish after ~12 years of age. The USS might also have other benefits: The recent MOXIE study²⁵ showed a statistically significant effect of omaveloxolone compared with placebo in total mFARS, confirming its sensitivity to change and to potential treatment effects. However, a particularly large effect was also observed in the USS, which, in contrast to the total score, showed almost no placebo effect²⁵. This has been noted for axial functions in clinical trials^{23,33}, and studies focusing on comparing gait

and balance outcomes in FRDA show superior responsiveness of the USS³⁴. Finally, the loss of USS-balance functions directly reflect future time to LoA¹⁸, adding to the clinical relevance of the USS. On the other hand, potential ceiling effects might limit the use of FARS E in patients with only residual balance/walking capacity, potentially requiring carefully selected inclusion criteria.

Analysis of outcome responsiveness as indicated by their SRMs suggests that at least 18 months would be necessary to achieve sufficient power for most outcomes in the absence of a therapy that reverses disease course. The results indicate that in many situations faster progression in children is more than compensated by higher variability. In non-ambulatory patients, in particular results from the 9HPT appear promising and suggest that upper limb function would allow to assess meaningful change in individuals at this stage of the disease. Eminently, the variability in clinical trials is not necessarily comparable, and shorter trial durations are possible²⁵.

On a more global note, FDS staging is mostly but not strictly monotonous and using the *first* attainment of FDS 5 to separate the population into disease phases will shift this type of variability into the non-ambulatory phase. In our analyses this should increase confidence in the ambulatory results, as it provides a defined functional limit, not unlike inclusion criteria in clinical trials. On the other hand, patients in the non-ambulatory phase are a much more diverse subgroup, as individual follow-up time will be influenced by functional status, but also by highly individual factors such as motivation and the ability to travel. The diversity of symptoms post-LoA makes it challenging to further establish functional milestones, and our results will likely underestimate progression in early non-ambulatory patients (and vice-versa). Further research is necessary for this group, and the ADL findings (as also shown in⁶) could stimulate focused patient reported outcome development. Clinical research in late-stage

FRDA will likely focus on specific symptoms (e.g., upper limb function, speech, and vision), rather than global outcome assessments.

Our results and methodology need to be opposed with data available from the European EFACTS study⁶. No age-based results are available from this cohort, while we have shown that current age is a major predictor of population-based progression. Also, long-term EFACTS analyses do not sufficiently differentiate disease severity, while we have shown that within the group with an AOO prior to <25 years progression differs broadly (more than a factor of 2). Both complicate conclusions on all levels, in particular on ADL scores which have higher variability in our study. The fact that EFACTS almost exclusively recruited adults certainly contributes, but also the way exams were administered and other factors such as the influence of parents/peers in children need to be clarified. In addition, on partially subjective endpoints such as the ADL, variation of healthcare perspectives may influence grading of some questions. Our study also points out the importance of direct efficacy measures like the T25FW and in particular the 9HPT, whereas EFACTS relies on composite endpoints whose clinical relevance may be more difficult to justify. Overall, the difference in population selection, incidentally, also explains the slightly higher average progression per 100 GAA repeats in our study compared with EFACTS. Although the values for GAA repeat length were used from commercial testing, assessment of the same subjects in systematic basic science studies has not commonly revealed differences between commercial sizing and single site research sizing³.

Notably, the variability in natural history studies does not always predict the findings in clinical trials, in which conditions are better controlled, and more repeated measures are possible in within short follow-up times. Furthermore, participants commonly perform better in trials, again leading to reduced variability. Equally important, some conclusions are necessarily based on small subgroups or limited follow-up, restricting their significance. As

the mFARS and other measures represent constructs to assess functional progression rather than actual biological change over time, correlations with ADL and QOL measures do not necessarily reflect the situation of individual subjects, especially at the limits of the scale, in more advanced patients. Relatively uniform events such as LoA may be timed slightly differently based on exact results from the mFARS, ADL scores, timed walks, and disability scales. Thus, extrapolating the present population-based research findings to clinical care of a specific individual is imperfect.

In conclusion, we demonstrate the large diversity of clinical presentation and disease progression in FRDA. Individual severity was contextualized with age-based population analyses, providing selection criteria and stratification schemes for clinical trials. Most importantly, the relevant drivers of decline by disease phase were identified and quantified, informing the discussion of clinical relevance of rating scale changes in FRDA.

WNL-2022-200876_sup1 -<http://links.lww.com/WNL/C195>

References

1. Delatycki MB, Bidichandani SI. Friedreich ataxia- pathogenesis and implications for therapies. *Neurobiol Dis.* 2019;132:104606. doi:10.1016/j.nbd.2019.104606
2. Galea CA, Huq A, Lockhart PJ, et al. Compound heterozygous *FXN* mutations and clinical outcome in friedreich ataxia: Insights From Frataxin Structure and Function. *Ann Neurol.* 2016;79(3):485-495. doi:10.1002/ana.24595
3. Rodden LN, Chutake YK, Gilliam K, et al. Methylated and unmethylated epialleles support variegated epigenetic silencing in Friedreich ataxia. *Hum Mol Genet.* 2021;29(23):3818-3829. doi:10.1093/hmg/ddaa267
4. Metz G, Coppard N, Cooper JM, et al. Rating disease progression of Friedreich's ataxia by the International Cooperative Ataxia Rating Scale: analysis of a 603-patient database. *Brain.* 2013;136(1):259-268. doi:10.1093/brain/aws309
5. Reetz K, Dogan I, Costa AS, et al. Biological and clinical characteristics of the European Friedreich's Ataxia Consortium for Translational Studies (EFACTS) cohort: a cross-sectional analysis of baseline data. *Lancet Neurol.* 2015;14(2):174-182. doi:10.1016/S1474-4422(14)70321-7
6. Reetz K, Dogan I, Hilgers RD, et al. Progression characteristics of the European Friedreich's Ataxia Consortium for Translational Studies (EFACTS): a 4-year cohort study. *Lancet Neurol.* 2021;20(5):362-372. doi:10.1016/S1474-4422(21)00027-2
7. Pandolfo M. Neurological outcomes in Friedreich ataxia: study of a single site cohort. 2020;6(3):e415. doi:doi.org/10.1212/NXG.0000000000000415
8. Rummey C, Flynn JM, Corben LA, et al. Scoliosis in Friedreich's ataxia: longitudinal characterization in a large heterogeneous cohort. *Ann Clin Transl Neurol.* 2021;8(6):1239-1250. doi:https://doi.org/10.1002/acn3.51352
9. Tamaroff J, McCormack S. Friedreich's Ataxia Related Diabetes: Epidemiology and Management Practices. *in preparation.*
10. Lecocq C, Charles P, Azulay JP, et al. Delayed-onset Friedreich's ataxia revisited: The Delayed-Onset Friedreich's Ataxia Revisited. *Mov Disord.* 2016;31(1):62-69. doi:10.1002/mds.26382
11. Koeppen AH. Friedreich's ataxia: Pathology, pathogenesis, and molecular genetics. *J Neurol Sci.* 2011;303(1-2):1-12. doi:10.1016/j.jns.2011.01.010
12. Bhidayasiri R, Perlman SL, Pulst SM, Geschwind DH. Late-Onset Friedreich Ataxia: Phenotypic Analysis, Magnetic Resonance Imaging Findings, and Review of the Literature. *Arch Neurol.* 2005;62(12):1865. doi:10.1001/archneur.62.12.1865
13. Martinez ARM, Moro A, Abrahao A, et al. Nonneurological Involvement in Late-Onset Friedreich Ataxia (LOFA): Exploring the Phenotypes. *The Cerebellum.* 2017;16(1):253-256. doi:10.1007/s12311-015-0755-8

14. Fearon C, Lonergan R, Ferguson D, et al. Very-late-onset Friedreich's ataxia: diagnosis in a kindred with late-onset cerebellar ataxia. *Pract Neurol*. 2020;20(1):55-58. doi:10.1136/practneurol-2019-002368
15. Schmitz-Hübsch T, du Montcel ST, Baliko L, et al. Scale for the assessment and rating of ataxia: development of a new clinical scale. *Neurology*. 2006;66(11):1717-1720. doi:10.1212/01.wnl.0000219042.60538.92
16. Rummey C, Corben LA, Delatycki MB, et al. Psychometric properties of the Friedreich Ataxia Rating Scale. *Neurol Genet*. 2019;5(6):371. doi:10.1212/NXG.0000000000000371
17. Patel M, Isaacs CJ, Seyer L, et al. Progression of Friedreich ataxia: quantitative characterization over 5 years. *Ann Clin Transl Neurol*. 2016;3(9):684-694. doi:10.1002/acn3.332
18. Rummey C, Farmer JM, Lynch DR. Predictors of loss of ambulation in Friedreich's ataxia. *EClinicalMedicine*. 2020;18:100213. doi:10.1016/j.eclinm.2019.11.006
19. Tai G, Corben LA, Gurrin L, et al. A study of up to 12 years of follow-up of Friedreich ataxia utilising four measurement tools. *J Neurol Neurosurg Psychiatry*. 2015;86(6):660-666. doi:10.1136/jnnp-2014-308022
20. Tai G, Yiu EM, Delatycki MB, Corben LA. How does performance of the Friedreich Ataxia Functional Composite compare to rating scales? *J Neurol*. 2017;264(8):1768-1776. doi:10.1007/s00415-017-8566-0
21. Subramony SH, May W, Lynch D, et al. Measuring Friedreich ataxia: interrater reliability of a neurologic rating scale. *Neurology*. 2005;64(7):1261-1262. doi:10.1212/01.WNL.0000156802.15466.79
22. Lynch DR, Farmer JM, Tsou AY, et al. Measuring Friedreich ataxia: Complementary features of examination and performance measures. *Neurology*. 2006;66(11):1711-1716. doi:10.1212/01.wnl.0000218155.46739.90
23. Lynch DR, Perlman SL, Meier T. A phase 3, double-blind, placebo-controlled trial of idebenone in Friedreich ataxia. *Arch Neurol*. 2010;67(8):941-947. doi:10.1001/archneurol.2010.168
24. Lynch DR, Hauser L, McCormick A, et al. Randomized, double-blind, placebo-controlled study of interferon- γ 1b in Friedreich Ataxia. *Ann Clin Transl Neurol*. 2019;6(3):546-553. doi:10.1002/acn3.731
25. Lynch DR, Chin MP, Delatycki MB, et al. Safety and Efficacy of Omaveloxolone in Friedreich Ataxia (MOXIe Study). *Ann Neurol*. 2021;89(2):212-225. doi:10.1002/ana.25934
26. Bates D, Mächler M, Bolker B, Walker S. Fitting linear mixed-effects models using lme4. *J Stat Softw*. 2015;67(1):1-48. doi:10.18637/jss.v067.i01
27. Lazaropoulos M, Dong Y, Clark E, et al. Frataxin levels in peripheral tissue in Friedreich ataxia. *Ann Clin Transl Neurol*. 2015;2(8):831-842. doi:10.1002/acn3.225

28. Clark E, Butler JS, Isaacs CJ, Napierala M, Lynch DR. Selected missense mutations impair frataxin processing in Friedreich ataxia. *Ann Clin Transl Neurol.* 2017;4(8):575-584. doi:10.1002/acn3.433
29. Davies EJ. Developmental aspects of schizophrenia and related disorders: possible implications for treatment strategies. *Adv Psychiatr Treat.* 2007;13(5):384-391. doi:10.1192/apt.bp.106.002600
30. Schwamborn JC. Is Parkinson's Disease a Neurodevelopmental Disorder and Will Brain Organoids Help Us to Understand It? *Stem Cells Dev.* 2018;27(14):968-975. doi:10.1089/scd.2017.0289
31. Selvadurai LP, Harding IH, Corben LA, Georgiou-Karistianis N. Cerebral abnormalities in Friedreich ataxia: A review. *Neurosci Biobehav Rev.* 2018;84:394-406. doi:10.1016/j.neubiorev.2017.08.006
32. Lawerman TF, Brandsma R, Burger H, Burgerhof JGM, Sival DA, the Childhood Ataxia and Cerebellar Group of the European Pediatric Neurology Society. Age-related reference values for the pediatric Scale for Assessment and Rating of Ataxia: a multicentre study. *Dev Med Child Neurol.* 2017;59(10):1077-1082. doi:10.1111/dmcn.13507
33. Meier T, Perlman SL, Rummey C, Coppard NJ, Lynch DR. Assessment of neurological efficacy of idebenone in pediatric patients with Friedreich's ataxia: data from a 6-month controlled study followed by a 12-month open-label extension study. *J Neurol.* 2012;259(2):284-291. doi:10.1007/s00415-011-6174-y
34. Milne SC, Kim SH, Murphy A, et al. The Responsiveness of Gait and Balance Outcomes to Disease Progression in Friedreich Ataxia. *Cerebellum Lond Engl.* Published online December 2, 2021. doi:10.1007/s12311-021-01348-2

Tables

Table 1: Demographic and follow-up characteristics by Onset Group.

Onset Group	0-7y (early)	8-14y (typical)	15-24y (intermediate)	>24y (late)	Overall
N	324	438	234	119	1115
(% of overall)	(29)	(39)	(21)	(11)	
Sex (m, %)	53	49	48	40	49
Age of Onset (AOO) [y]	5 [4, 6]	11 [9, 13]	18 [16, 20]	32 [28, 40]	11 [7, 16]
GAA1 ¹	790 [700, 896]	704 [600, 820]	500 [376, 630]	250 [136, 360]	690 [500, 800]
GAA2 ¹	980 [875, 1099]	917.0 [800, 1020]	869.0 [730, 1018]	866.0 [627, 1000]	926.5 [800, 1034]
Point Mutations (%)	8.6	3.7	4.3	2.5	5.1
Time Since Diagnosis [y]	2.4 [0.9, 9.2]	3.7 [1.1, 12.3]	5.6 [1.7, 12.6]	6.4 [3.0, 11.8]	4.2 [1.1, 11.5]
Age [y]	12 [9, 19]	19 [15, 27]	30 [24, 39]	49 [43, 57]	21 [14, 34]
Age at last visit [y]	18 [14, 25]	24 [19, 33]	35 [29, 44]	53 [47, 63]	27 [19, 39]
Ambulatory at enrollment (%)	71	65	75	78	70
Ambulatory at last visit (%)	43	45	54	66	49
Follow-Up [y]	5 [3, 9]	5 [3, 9]	6 [3, 10]	6 [3, 10]	5 [3, 10]
Patients without follow-up (%)	20	22	24	29	23

Data are % or median [IQR];

¹Excluding point mutations (n=57) and participants with missing repeat length information (n=58).

Table 2: Baseline results in mFARS, ADL and functional measures, by ambulation status.

Measure (Total N)	Disease Phase	N (overall)	Onset Group			
			0-7y (early)	8-14y (typical)	15-24y (intermediate)	>24y (late)
mFARS	ambulatory	732	42.3 (11.3)	38.0 (11.9)	37.6 (13.8)	37.4 (12.3)
	non-amb.	316	73.0 (9.0)	69.8 (10.0)	66.8 (10.2)	63.6 (8.81)
Bulbar Function (FARS A)	ambulatory	732	0.58 (0.68)	0.54 (0.60)	0.70 (0.68)	0.92 (0.61)
	non-ambulatory	316	2.0 (1.0)	1.6 (1.0)	1.3 (0.8)	1.5 (0.7)
Upper Limb Function (FARS B)	ambulatory	732	12.7 (5.1)	10.3 (4.6)	10.4 (5.1)	11.1 (4.7)
	non-ambulatory	316	21.9 (6.4)	19.7 (6.7)	18.9 (5.9)	18.2 (4.9)
Lower Limb Function (FARS C)	ambulatory	732	6.6 (3.0)	6.1 (2.9)	5.9 (2.9)	5.7 (2.6)
	non-ambulatory	316	14.6 (2.5)	14.4 (3.1)	12.8 (4.3)	10.8 (4.5)
Upright Stability (FARS E)	ambulatory	732	22.4 (5.7)	21.0 (6.6)	20.6 (7.4)	19.7 (7.4)
ADL	ambulatory	720	10.5 (4.9)	8.79 (4.9)	10.2 (4.9)	11.6 (5.0)
	non-ambulatory	317	23.5 (4.9)	21.3 (5.2)	20.5 (5.6)	18.7 (4.8)
Timed 25-Foot Walk [m/s]	ambulatory	673	1.23 (0.47)	1.24 (0.43)	1.00 (0.45)	0.90 (0.39)
9-Hole Peg Test [1/min]	ambulatory	711	1.28 (0.36)	1.39 (0.40)	1.33 (0.42)	1.38 (0.48)
	non-ambulatory	216	0.56 (0.28)	0.59 (0.30)	0.67 (0.32)	0.79 (0.29)

Data are mean (SD)

Figure legends

Figure 1: Correlation of Age of Onset (AOO) with the length of the shorter *FXN* gene GAA repeat expansion (GAA1).

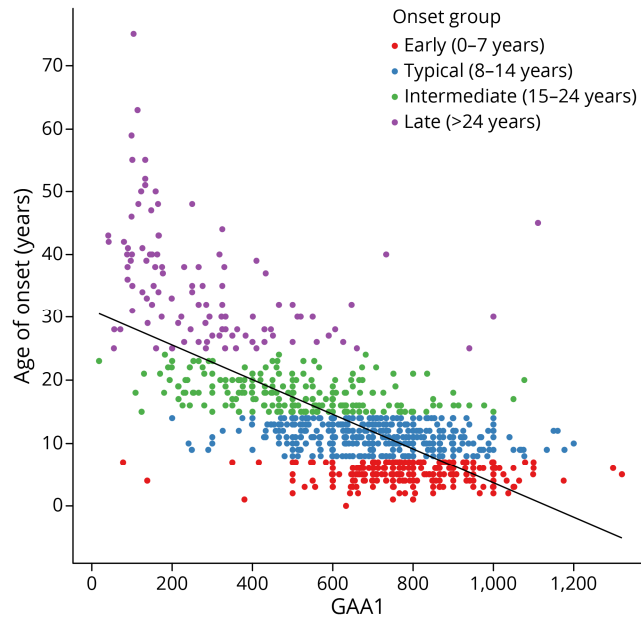


Figure 2: Visit structure of the FACOMS cohort. Number of Visits by ambulation, onset features and current age. Age groups (see text) are enclosed by vertical dotted lines. Bold numbers show percentages of visits performed ambulatory within age-groups.

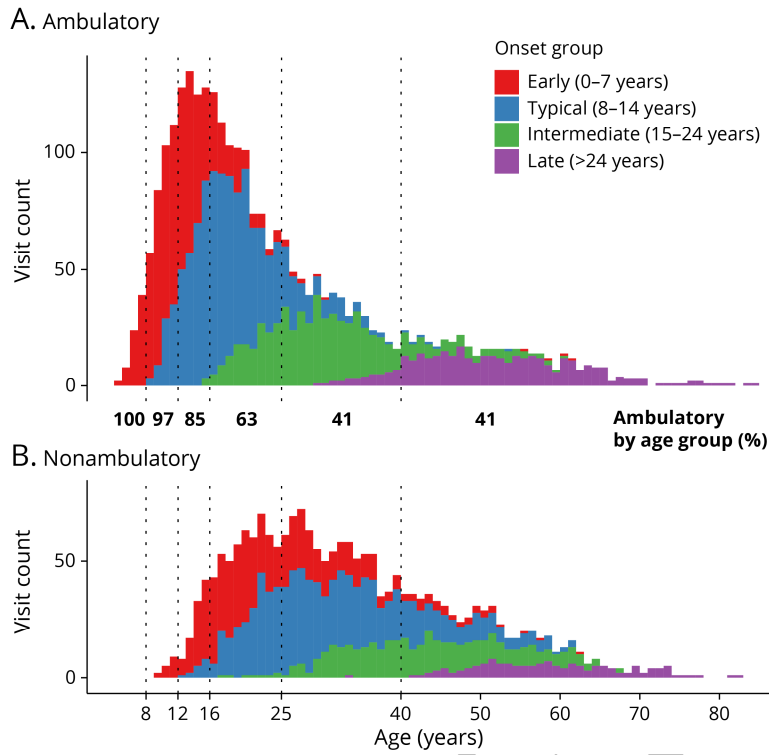


Figure 3: Estimated yearly progression by Onset Group and ambulation status. mFARS (A), Upright Stability/FARS E (B), and FARS A, B and C (C-E), Activities of Daily Living (F), the Timed 25-Foot Walk (G), 9-Hole Peg Test (H). Note the differential y-axis scaling error bars represent 95% confidence intervals.

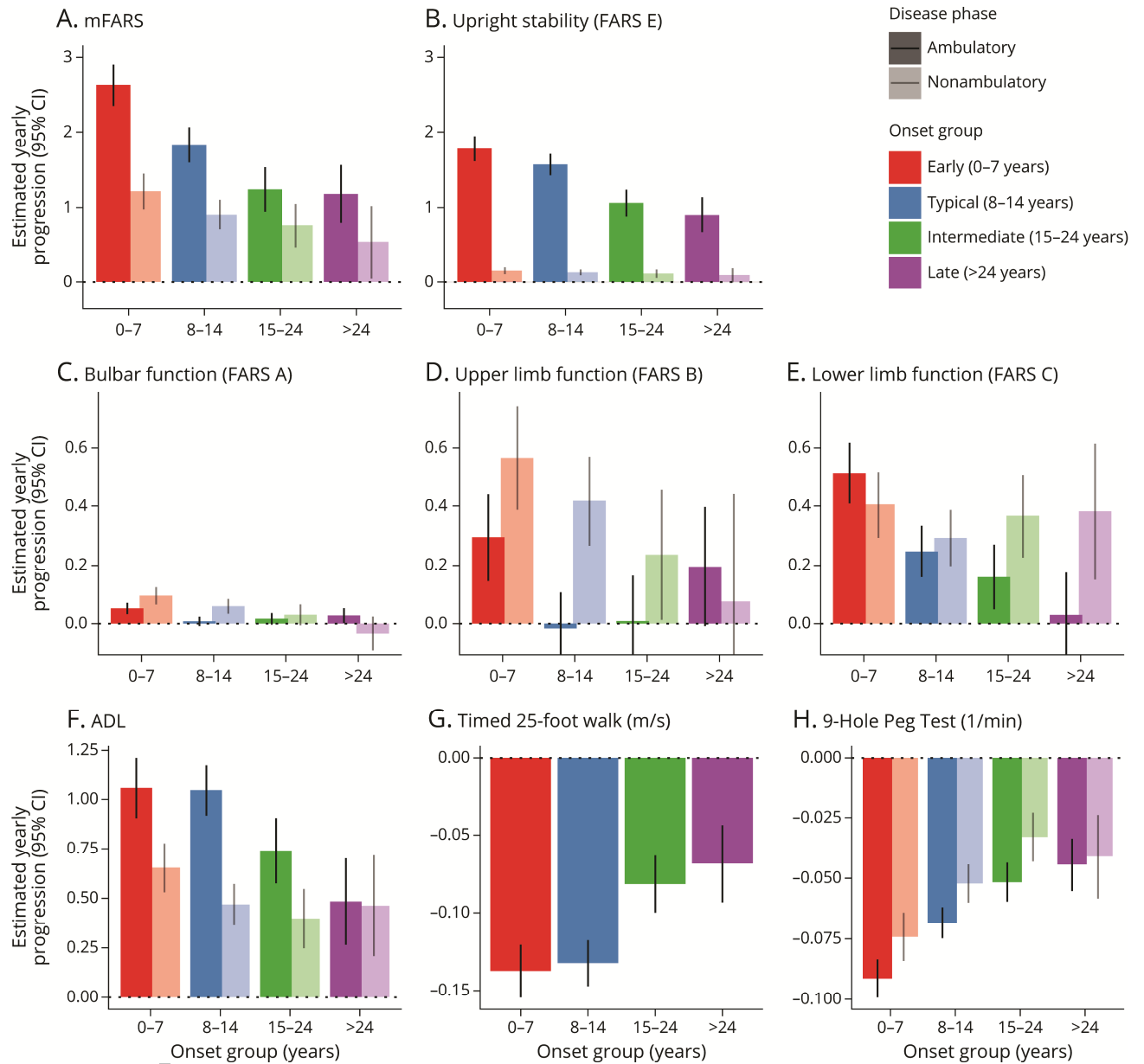


Figure 4: Mean annual changes in ambulatory patients by current age group. mFARS (A), Upright Stability/FARS E (B), Upper Limb Function/FARS B (C), Activities of Daily Living (D), the Timed 25-Foot Walk (E), 9-Hole Peg Test (F).

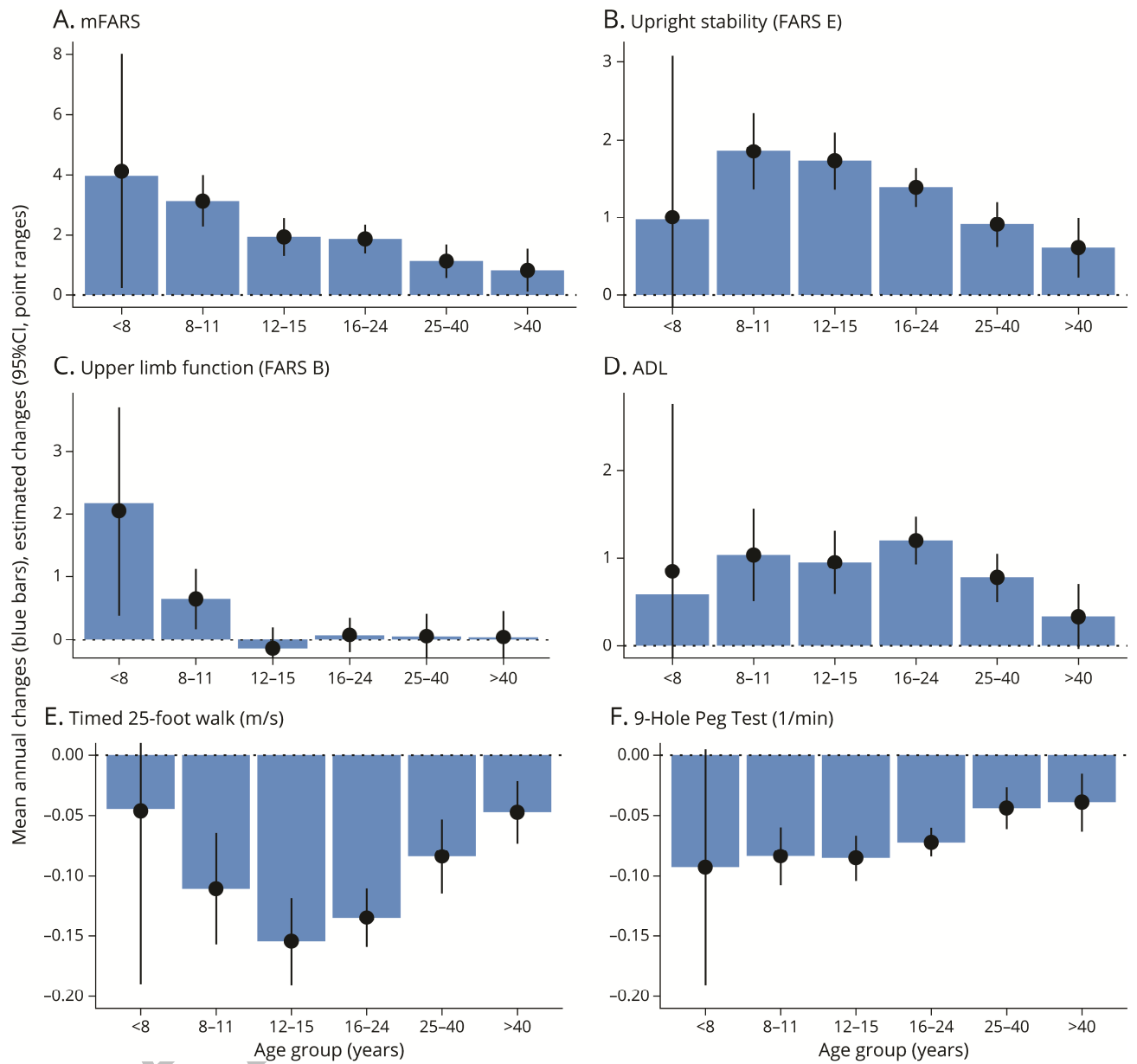
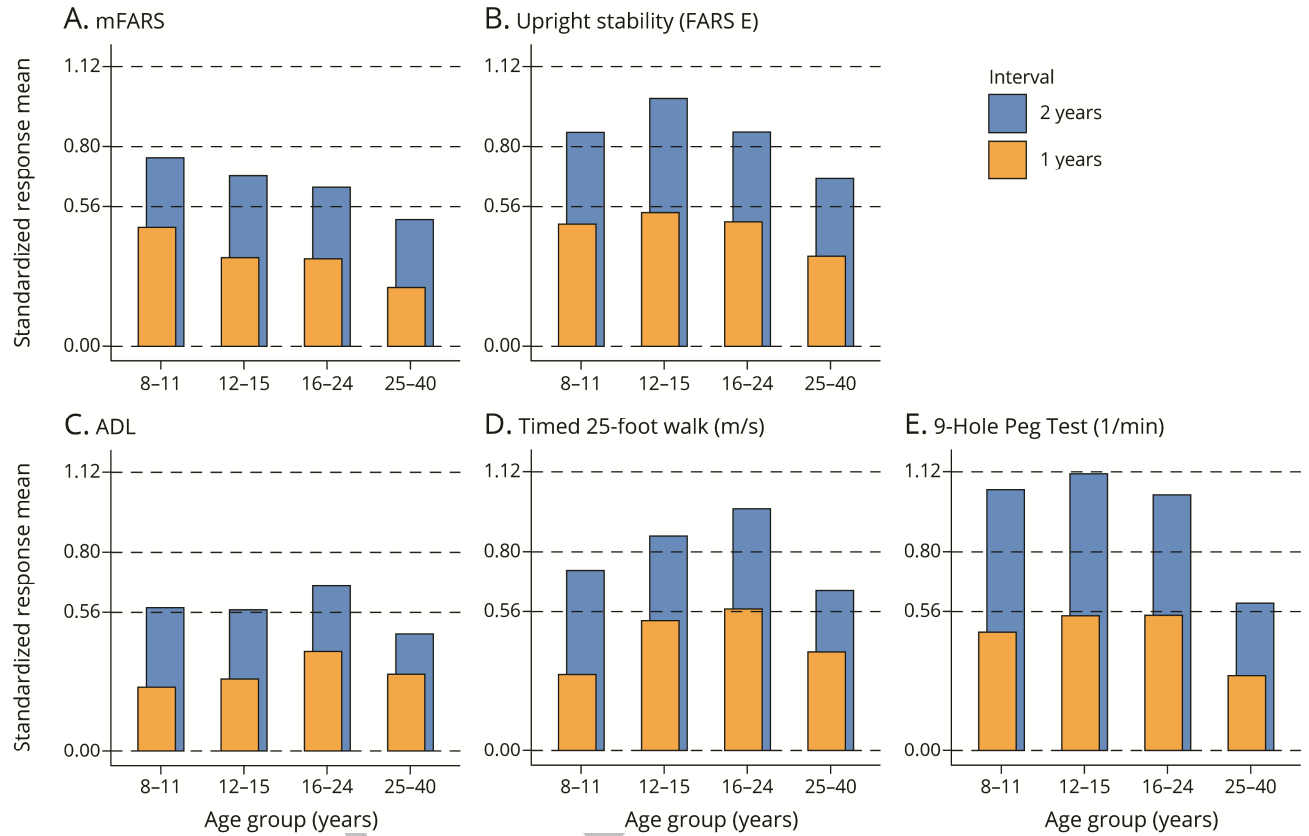


Figure 5: Responsiveness of selected endpoints as expressed by standard response means. One and two year Intervals, for ambulatory patients with current age 8-40 years. Using typical assumptions (80% power, $\alpha = 0.05$, a treatment reduces progression by 50%), the y-axis labels correspond to 200 patients (SRM=0.56), 100 patients (SRM=0.80) and 50 patients (SRM=1.12).



Neurology®

Natural History of Friedreich's Ataxia: Heterogeneity of Neurological Progression and Consequences for Clinical Trial Design

Christian Rummey, Louise A Corben, Martin Delatycki, et al.

Neurology published online July 11, 2022

DOI 10.1212/WNL.0000000000200913

This information is current as of July 11, 2022

Updated Information & Services	including high resolution figures, can be found at: http://n.neurology.org/content/early/2022/07/11/WNL.0000000000200913.full
Subspecialty Collections	This article, along with others on similar topics, appears in the following collection(s): Clinical trials Observational study (Cohort, Case control) http://n.neurology.org/cgi/collection/clinical_trials_observational_study_cohort_case_control Gait disorders/ataxia http://n.neurology.org/cgi/collection/gait_disorders_ataxia Mitochondrial disorders http://n.neurology.org/cgi/collection/mitochondrial_disorders Mitochondrial disorders; see Genetics/Mitochondrial disorders http://n.neurology.org/cgi/collection/mitochondrial_disorders_see_genetics-mitochondrial_disorders Natural history studies (prognosis) http://n.neurology.org/cgi/collection/natural_history_studies_prognosis
Permissions & Licensing	Information about reproducing this article in parts (figures, tables) or in its entirety can be found online at: http://www.neurology.org/about/about_the_journal#permissions
Reprints	Information about ordering reprints can be found online: http://n.neurology.org/subscribers/advertise

Neurology® is the official journal of the American Academy of Neurology. Published continuously since 1951, it is now a weekly with 48 issues per year. Copyright © 2022 The Author(s). Published by Wolters Kluwer Health, Inc. on behalf of the American Academy of Neurology. All rights reserved. Print ISSN: 0028-3878. Online ISSN: 1526-632X.

