

Minerva Access is the Institutional Repository of The University of Melbourne

Author/s:

Liu, C;Kanazawa, T;Tian, Y;Mohamed Saini, S;Mancuso, S;Mostaid, MS;Takahashi, A;Zhang, D;Zhang, F;Yu, H;Doo Shin, H;Sub Cheong, H;Ikeda, M;Kubo, M;Iwata, N;Woo, S;Yue, W;Kamatani, Y;Shi, Y;Li, Z;Everall, I;Pantelis, C;Bousman, C

Title:

The schizophrenia genetics knowledgebase: a comprehensive update of findings from candidate gene studies

Date:

2019-12-01

Citation:

Liu, C., Kanazawa, T., Tian, Y., Mohamed Saini, S., Mancuso, S., Mostaid, M. S., Takahashi, A., Zhang, D., Zhang, F., Yu, H., Doo Shin, H., Sub Cheong, H., Ikeda, M., Kubo, M., Iwata, N., Woo, S. I., Yue, W., Kamatani, Y., Shi, Y. ,... Bousman, C. (2019). The schizophrenia genetics knowledgebase: a comprehensive update of findings from candidate gene studies. *Translational Psychiatry*, 9 (1), <https://doi.org/10.1038/s41398-019-0532-4>.

Persistent Link:

<https://hdl.handle.net/11343/250059>

License:

CC BY

ARTICLE

Open Access

The schizophrenia genetics knowledgebase: a comprehensive update of findings from candidate gene studies

Chenxing Liu^{1,2}, Tetsufumi Kanazawa^{1,3,4}, Ye Tian¹, Suriati Mohamed Saini^{1,5}, Serafino Mancuso¹, Md Shaki Mostaid^{1,6}, Atsushi Takahashi^{7,8}, Dai Zhang^{9,10,11}, Fuquan Zhang¹², Hao Yu^{9,10,13}, Hyoung Doo Shin^{14,15}, Hyun Sub Cheong¹⁴, Masashi Ikeda¹⁶, Michiaki Kubo¹⁷, Nakao Iwata¹⁶, Sung-Il Woo¹⁸, Weihua Yue^{9,10}, Yoichiro Kamatani^{17,19}, Yongyong Shi²⁰, Zhiqiang Li²⁰, Ian Everall^{21,22}, Christos Pantelis^{1,4,23,24} and Chad Bousman^{1,25}

Abstract

Over 3000 candidate gene association studies have been performed to elucidate the genetic underpinnings of schizophrenia. However, a comprehensive evaluation of these studies' findings has not been undertaken since the decommissioning of the schizophrenia gene (SzGene) database in 2011. As such, we systematically identified and carried out random-effects meta-analyses for all polymorphisms with four or more independent studies in schizophrenia along with a series of expanded meta-analyses incorporating published and unpublished genome-wide association (GWA) study data. Based on 550 meta-analyses, 11 SNPs in eight linkage disequilibrium (LD) independent loci showed Bonferroni-significant associations with schizophrenia. Expanded meta-analyses identified an additional 10 SNPs, for a total of 21 Bonferroni-significant SNPs in 14 LD-independent loci. Three of these loci (*MTHFR*, *DAOA*, *ARVCF*) had never been implicated by a schizophrenia GWA study. In sum, the present study has provided a comprehensive summary of the current schizophrenia genetics knowledgebase and has made available all the collected data as a resource for the research community.

Introduction

Genome-wide association (GWA) studies have demonstrated that schizophrenia is a polygenic psychiatric disorder. The largest GWA study of schizophrenia to date has implicated more than 100 genetic loci associated with the disorder and future, even larger GWA studies are expected to increase the number of loci to >200¹. Moreover, candidate gene studies continue to be conducted in schizophrenia, with an average of 100 published each year (Supplementary fig. S1). This unrelenting wave of

schizophrenia genetic findings has made the most diligent readers among us struggle to follow the current evidence, leaving most of us unaware of findings from the vast majority of candidate gene studies.

In 2008, Allen et al. developed the SzGene database, a comprehensive catalogue of candidate gene studies in schizophrenia². SzGene includes more than 1700 genetic association studies representing 1008 genes and 8788 polymorphisms. Since 2011 SzGene has not been updated and is now designated as a legacy database. As such, the thousands of candidate gene studies conducted in schizophrenia since 2011 have not been comprehensively captured and incorporated into this valuable schizophrenia knowledgebase. To remedy this issue and to provide an overview of candidate gene studies, we systematically identified all genetic association studies

Correspondence: Chad Bousman (chad.bousman@ucalgary.ca) or Chenxing Liu (chl284@pitt.edu)

¹Melbourne Neuropsychiatry Centre, Department of Psychiatry, University of Melbourne, Melbourne, VIC, Australia

²Department of Human Genetics, Graduate School of Public Health, University of Pittsburgh, Pittsburgh, PA, USA

Full list of author information is available at the end of the article

© The Author(s) 2019



Open Access This article is licensed under a Creative Commons Attribution 4.0 International License, which permits use, sharing, adaptation, distribution and reproduction in any medium or format, as long as you give appropriate credit to the original author(s) and the source, provide a link to the Creative Commons license, and indicate if changes were made. The images or other third party material in this article are included in the article's Creative Commons license, unless indicated otherwise in a credit line to the material. If material is not included in the article's Creative Commons license and your intended use is not permitted by statutory regulation or exceeds the permitted use, you will need to obtain permission directly from the copyright holder. To view a copy of this license, visit <http://creativecommons.org/licenses/by/4.0/>.

published in the field of schizophrenia between 2011–2017 and merged this information with the studies contained in the SzGene database.

Methods

Data collection from SzGene

Polymorphism data were collected from the SzGene database, encompassing general information of the study (PubMed ID, year of publication, first author name), description of participants (diagnostic criteria, ancestry, sample size of case, control and trio), candidate gene name, genotyped SNP IDs and genotype distribution. The SzGene study also included family-based genetic studies, but the genotype distributions for these studies were not available in its database since these studies were not included in their meta-analyses. Thus, we gathered the counts of transmitted and non-transmitted alleles from these family studies. Furthermore, incorrect and incomplete information found in the SzGene database were revised after reviewing the original genetic study (see Supplementary Table S1 for a list of revised data).

Search strategy

For the collection of genetic studies not assembled in SzGene database, a customized querying strategy (shown below) was developed based on the key words extracted from the abstracts of 1711 studies in the SzGene database.

(schizophrenia OR schizophrenic OR schizophrenics OR schizoaffective) AND (haplotypes OR haplotype OR allele OR alleles OR polymorphic OR polymorphism OR polymorphisms OR SNP OR SNPs) AND (“2010/01/01”[Date - Publication]: “2017/02/16”[Date - Publication])

The querying strategy was applied to PubMed electronic database to identify candidate gene studies. To further improve the coverage of studies, publication information of SNPs in dbSNP149 (Supplementary Table S2) was used as a second resource for querying genetic studies in schizophrenia.

Literature review and data collection

We retrieved 3320 studies published between January 2010 and February 2017. Three reviewers (CL, SMS, YT) double-reviewed these studies, and disagreements were resolved through discussion with an independent reviewer (CB). Studies were processed for data collection if they were English-language articles with polymorphisms detected in schizophrenia patients (Supplementary Fig. S2). Information extracted from eligible studies included: PubMed ID, year of publication, authors, diagnostic criteria, ancestry of participants, sample size of cases, controls or trios, candidate gene name, genotyped SNP IDs and genotype/allele frequency data.

Pre-processing

To systemically store and process data collected from published articles in a comparable and unified format, we conducted pre-processing steps to put electronic records in order. Supplementary Fig. S3 provides the workflow regarding the pre-processing steps, with detailed pre-processing information and outputs provided in Supplementary methods and Supplementary Tables S1, S3–S7.

Inclusion/exclusion criteria

Studies were included in meta-analyses based on the following criteria: (1) the study was a case-control or family-based association study; (2) the study included genotype or allelic frequency data or sufficient summary statistics for meta-analysis and (3) the study was not an exon sequencing, whole-genome sequencing, or GWA study as raw data from these studies were not available and the risk of overlap with the cases-control or family-based studies was assumed to be high.

For case-control studies to be included in the meta-analysis, one or more of the following data types was required: (1) genotype distributions of candidate SNPs in cases and controls; (2) allelic distributions of SNPs in cases and controls and (3) statistics related to an association test (p value, odds ratio and 95% confidence interval of odds ratio). When more than one of these data types were available, we prioritized genotyped distributions of SNPs. In family-based studies, counts of transmission versus non-transmissions of the reference allele in parents-offspring trios were used in the meta-analyses. We attempted to contact the corresponding authors to request data when the required data were not available or incomplete in the full-access article and supplements.

Quality control

Minor allele frequency (MAF) information from the 1000 Genomes Project in African (AFR: pop_id = 16653 in dbSNP149), East Asian (pop_id = 16651), European (pop_id = 16652) and South Asian (pop_id = 16655) populations were downloaded from the dbSNP149 database (Supplementary Table S2). The risk and protective alleles of a SNP were switched if the reported allele frequency were considerably different from that in the corresponding 1000 genome population and the difference could not be attributed to known frequency discrepancies among subpopulations within the 1000 genome project data (see Supplementary Table S6). For the SNPs with complementary wild and variant alleles (that is, A–T or C–G transversion), meta-analysis results could be misleading because most of the published association studies did not provide DNA strand information for genotyped SNPs. To overcome this limitation caused by an ambiguous strand of A–T or

C–G alleles, we manually checked the allele frequency of SNPs with complementary wild and variant alleles and aligned these SNPs to the forward strand based on the allele frequency obtained from the 1000 Genome Project Phase 3 (Supplementary Table S7). SNPs in which it was difficult to determine the forward/reverse strands according to allele frequency were excluded from the meta-analysis (Supplementary Table S7).

Statistical analysis

Data from eligible studies were loaded into R (version 3.3.1) for statistical analysis. The meta-analysis was conducted using the “metafor” package and “meta” library in R. For all SNPs with four or more genetic studies, we computed an estimate of allelic effect (AE, referred to as treatment effect in ‘meta’ package) and standard error of allelic estimate (seAE), which are essential statistics for meta-analysis. Steps to obtain AE & seAE in case-control genetic studies were as follows³:

$$OR = \frac{C_a^{(1)}C_A^{(0)}}{C_A^{(1)}C_a^{(0)}} \tag{1}$$

$$AE = \log_e(OR) \tag{2}$$

$$seAE = \sqrt{\frac{1}{C_A^{(1)}} + \frac{1}{C_a^{(1)}} + \frac{1}{C_A^{(0)}} + \frac{1}{C_a^{(0)}}},$$

(if allele/genotype distribution is available)

$$seAE = \frac{AE}{-0.862 + \sqrt{0.743 - 2.404 \times \log_e(p)}}.$$

(if p value is available)

$$seAE = CI_{up} - OR \text{ (if confidence interval is available)} \tag{3}$$

where OR is odds ratio of candidate SNP, CI_{up} is the upper bound of 95% confidence interval, and $C_A^{(1)}$, $C_a^{(1)}$, $C_A^{(0)}$, and $C_a^{(0)}$ were counts of A/a alleles in case and control groups, respectively.

For family-based studies we adopted the approach for obtaining AE and seAE proposed by Kazeem and Farrall:

$$AE = \log_e(C_T/C_N) \tag{1}$$

$$seAE = \frac{1}{C_T} + \frac{1}{C_N} \tag{2}$$

where C_T is the number of transmissions of the reference allele from parents to schizophrenia case, and C_N is the number of non-transmissions of the reference allele. The odds ratio and 95% confidence interval were obtained according to both the fix-effects and random-effects models. For random-effects models we obtained summary ORs and 95% CIs with the DerSimonian and Laird⁴, which utilizes weights that incorporate both the within-study

and between-study variance. The meta-analysis pipeline was first applied to studies regardless of population and then repeated in Caucasian and Asian populations separately.

Heterogeneity

We used Higgins’s I^2 statistic to quantify between-study heterogeneity caused by differences in study design and ancestry. The I^2 statistic was calculated as $I^2 = [Q - (K - 1)] \times 100$, where Q is Cochran’s Q statistic and (K-1) is the degree of freedom. A large I^2 value indicates significant heterogeneity among studies and the CI bounds calculated by the random-effects model are more reliable in the presence of high heterogeneity.

Sensitivity analyses

To evaluate the impact of outlier and influential cases we employed an approach recommend by Viechtbauer and Cheung⁵. Studies were considered as outliers if the absolute value of studentized deleted residuals was greater than 1.96. To test the influence of each study, we conducted sensitivity tests applying a leave-one-out analysis approach, which excludes each study in turn. A study was considered an influential case if it led to considerable changes in the leave-one-out analysis, which can be determined by the DFFITS, DFBETAS and COVRATIO statistics. In addition to outlier and influential cases, we also performed sensitivity analyses, excluding studies that deviated from HWE at $p < 0.05$.

Publication bias

Funnel plots analysis were performed to detect potential publication bias, and the regression test proposed by Harbord⁶ was used to quantify the asymmetry in the funnel plot. If publication bias was identified, the “trimfill” function in metafor with Viechtbauer’s recommended parameter⁷ was used to impute the missing studies in the funnel plot and to obtain the estimate of the effect size after adjustment for publication bias. According to the recommendations from Sterne et al.⁸, the test for publication bias was only applied to SNPs with 10 or more studies.

Comparison with recent meta-analysis studies

To ensure completeness of our systematic literature search, we compared the studies identified by of our search to that of meta-analyses published between 1 January 2017, and 31 December 2017 using the following PubMed query:

((schizophrenia) AND (meta OR meta-analysis)) AND (polymorphism OR polymorphisms OR SNP OR SNPs) AND (“2017/01/01”[Date - Publication]: “2017/12/31”[Date - Publication])

Collection of GWAS samples and expanded meta-analyses

To increase statistical power of our analyses we performed two expanded meta-analyses that combined our candidate gene study data with GWA study data obtained from the Psychiatric Genomics Consortium (PGC) schizophrenia GWA study (i.e. PGC2), four published Asian GWA studies, and an unpublished Chinese GWA study (see Supplementary methods for detailed descriptions). Candidate gene studies in Caucasians were excluded from the combined analyses due to the suspected high-degree of overlap between these samples and those included in the PGC2 dataset. We applied meta-analyses for SNPs that were nominally significant in the candidate-gene meta-analyses. The expanded meta-analyses combined GWA study data using the META software developed by Liu et al.⁹ The Z-statistic and *p*-value were estimated using the inverse-variance method based on a fixed-effects model, but for SNPs with pronounced heterogeneity ($I^2 > 75\%$), the Z-statistic was computed using a random-effect model¹⁰.

Results

Our systematic search identified a total of 3320 publications examining 20,570 single nucleotide polymorphisms (SNPs) in more than 3414 genes. After applying inclusion and exclusion criteria and quality control procedures (see online methods), 1188 publications investigating 550 SNPs in 168 genes were eligible for meta-analysis (Supplementary Fig. S2), representing a doubling of the number of SNPs included in the last update of the SzGene database (Supplementary Table S8). Comparison of our literature search strategy with 21 schizophrenia genetic meta-analyses published after 2017, showed our search strategy was robust and more comprehensive than the reference meta-analyses, with exception of four meta-analyses that included GWA studies, non-English articles, and/or studies published after our inclusion date (Supplementary Table S9).

The median number of studies and combined sample size (case and controls) for the meta-analyses performed were five (interquartile range (IQR) = 4–8) and 5542 (IQR = 3,198–8,709), respectively. Among the 550 SNPs subjected to meta-analyses, 82 SNPs were nominally associated with schizophrenia in Asians and/or Caucasians after adjusting for publication bias and sensitivity analyses (Supplementary Tables S10–S13, and Supplementary Data S2). Among the 29 SNPs that were significant (*p*-value < 0.05) in our meta-analysis and the PGC GWAS, the effect estimate (i.e. odds ratio) was in the same direction for 79% ($n = 23$) of them (Supplementary Table S10). Following Bonferroni correction ($p < 9.09 \times 10^{-5}$), 11 SNPs in eight linkage disequilibrium (LD) independent loci remained significant (Table 1). Five of these top eight LD-independent loci (*MTHFR*, *PDE4B*, *DAOA*, *ARVCF*,

Table 1 Bonferroni associations in candidate gene meta-analyses

SNP	Gene	Chr	Position	Reference allele	Population	Cases vs controls (studies included)	<i>P</i> -value ^a	OR (95% CI) ^b	<i>I</i> ²	PGC (<i>p</i>)	PGC (odds ratio)
rs1801133	MTHFR	1	11856378	T	All populations	14242 vs 18541 (45)	2.61E-05 ^c	1.12 (1.06–1.18)	57	0.55	1.0068
rs910694	PDE4B	1	66795976	C	All populations	1523 vs 1258 (4)	1.05E-05	0.77 (0.68–0.86)	2	0.48	0.99
rs1344706	ZNF804A	2	185778428	G	All populations	19724 vs 22368 (33)	1.72E-05 ^c	0.92 (0.89–0.96)	31	1.27E-10	0.93
rs11098403	TRAM1L1/NDST3	4	118646907	G	Asian	1861 vs 2081 (4)	1.45E-10	0.65 (0.58–0.75)	0	3.52E-05	1.05
rs6932590	PRSS16/POM121L2	6	27248931	C	All populations	8351 vs 15485 (15)	3.05E-07 ^c	0.86 (0.81–0.91)	0	1.02E-20	0.89
rs13211507	PGBD1	6	28257377	C	Caucasian	4914 vs 12522 (13)	1.47E-06	0.76 (0.68–0.85)	7	6.28E-26	0.81
rs2071287	NOTCH4	6	32170433	A	Asian	6608 vs 12918 (6)	4.38E-05	0.89 (0.85–0.94)	14	NA	NA
rs3131296	NOTCH4	6	32172993	A	All populations	6112 vs 13633 (15)	2.22E-07 ^c	0.79 (0.73–0.87)	0	NA	NA
rs1006737	CACNA1C	12	2345295	A	All populations	14337 vs 15969 (9)	5.61E-07 ^c	1.18 (1.1–1.25)	0	1.09E-16	1.1
rs778293	DAOA ⁻	13	106169199	G	Asian	2899 vs 3218 (4)	1.60E-05	1.18 (1.09–1.27)	0	0.53	0.99
rs165815	ARVCF	22	19959473	C	All populations	2982 vs 3253 (6)	6.36E-07 ^c	1.64 (1.35–1.99)	0	0.04	0.97

The table presents Bonferroni-significant polymorphisms in Asians and/or Caucasians after adjusting for publication bias and sensitivity analyses

^aThe *p* value and odds ratio were calculated based on random-effect model

^bOdds ratio was calculated under allelic model corresponding to the reference allele

^cWe present the results (*p*-value and odds ratio) in sensitivity analysis for the polymorphism

TRAM111/NDST3) were not located within risk loci identified in the largest schizophrenia GWA study produced by the PGC and three loci (*MTHFR*, *DAOA*, *ARVCF*) had never been implicated by a schizophrenia GWA study.

To further explore the 82 nominally associated SNPs identified in our candidate gene meta-analyses, we conducted two sets of expanded meta-analyses that combined candidate gene study data with schizophrenia GWA study data. In both sets of expanded meta-analyses, 61 SNPs with actual or imputed genotypes from the 82 SNPs found to be nominally associated with schizophrenia in our candidate-gene meta-analyses were examined (Supplementary Table S10).

In the first set of expanded meta-analyses, we focused on Asian studies only. Combined data from five Asian schizophrenia GWA studies (14,433 cases and 26,797 controls, see Supplementary methods) and applicable Asian candidate-gene studies revealed two Bonferroni-significant LD-independent loci (*CNNM2*, *MPC2*) not identified in our candidate gene only meta-analyses (Supplementary Table S14, and Supplementary Data S3). The *CNNM2* gene had not previously been implicated in an Asian GWA study of schizophrenia, although among Caucasians in the PGC schizophrenia GWA study this gene was located within one of the 108 loci associated with schizophrenia¹. Whereas the locus represented by *MPC2*, had not been implicated previously by the PGC schizophrenia GWA study but was identified as a genome-wide significant ($p = 1.00 \times 10^{-8}$) locus in a previous Asian GWA study¹¹.

In the second set of expanded meta-analyses, Caucasian data from the PGC schizophrenia GWA study (34,241 cases and 45,604 control)¹ was combined with the Asian candidate gene and GWA study data. Caucasian candidate gene study data identified in our systematic search were not included because of high suspected overlaps in participants between these studies and the PGC GWA study. Meta-analyses of these combined data showed four additional Bonferroni-significant LD-independent loci (*SPA17/NRGN*, *OPCML*, *TCF4*, chr11 intergenic region). Two of these loci, represented by *OPCML* and an intergenic region (rs1602565) in chromosome 11, did not sit within one of the 108 schizophrenia risk loci identified by the PGC GWA study (Supplementary Table S15, and Supplementary Data S4). Although, a GWA study conducted by O'Donovan and colleagues (2008) reported nominal associations between schizophrenia and both these loci (*OPCML*: $p = 5.63 \times 10^{-4}$; rs1602565: $p = 2.99 \times 10^{-6}$)¹². Altogether, our meta-analyses (candidate gene only and expanded with GWA studies) identified 14 Bonferroni LD-independent loci (Fig. 1, Supplementary Table S16).

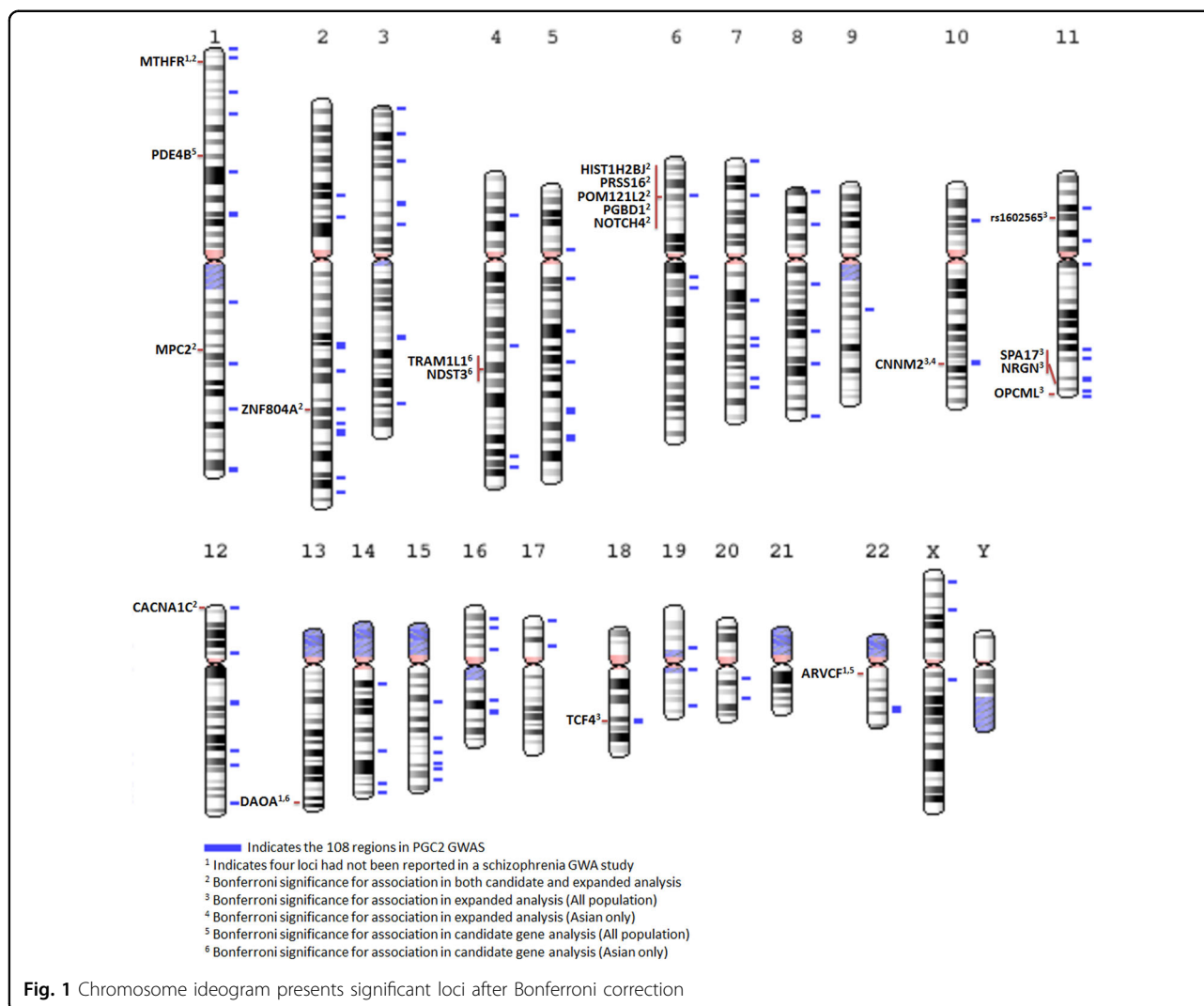
Discussions

Our study represents the first comprehensive update of the schizophrenia knowledgebase in nearly a decade. We identified 21 Bonferroni-significant SNPs in 14 LD-independent loci associated with schizophrenia susceptibility. Three (*MTHFR*, *DAOA*, *ARVCF*) of these loci had not been reported in a schizophrenia GWA study within the Asian or Caucasian populations. However, the association result of *MTHFR*, *DAOA* and *ARVCF* didn't achieve the GWAS-significant threshold ($p < 10E-08$), more association analyses in expanded population are needed before further functional study.

Our findings support the notion that genetic risk loci for schizophrenia can be shared across or be specific to particular populations. *CNNM2* is an example of a shared locus in Caucasian and Asian populations. The PGC schizophrenia GWA study implicated *CNNM2* among Caucasians and our current findings echoed this association in Asians. Conversely, *MPC2* is an example of a population specific locus. The PGC schizophrenia GWA study did not identify *MPC2* as a significant locus but in our Asian only meta-analyses we found a robust association between this gene and schizophrenia.

In our candidate gene meta-analyses, 11 SNPs were identified after Bonferroni correction. However, three of them (rs165815 in *ARVCF*, rs910694 in *PDE4B* and rs11098403 in the intergenic region between *TRAM111* and *NDST3*) should be interpreted with caution because of their insufficient sample sizes and uncharacteristically large odds ratios. Moreover, neither of these SNPs was replicated in our second-round meta-analyses combined with GWAS results. The other seven genes/loci (*PDE4B*, *ZNF804A*, *PRSS16/POM121L2*, *PGBD1*, *NOTCH4* and *CACNA1C*) were reported by previous GWAS, suggesting most of the candidate gene studies that identified these SNPs were motivated by prior GWAS findings. In this sense, candidate gene studies didn't provide much new insight into the pathology of schizophrenia in addition to GWAS, which was consistent with the viewpoint summarized by Johnson et al. and Farrell et al.^{13,14}. Previous reviews have suggested that biological-based candidate genes were not more likely to be associated with schizophrenia compared with non-candidate genes. Our systematic review further revealed that an increasing number of association studies have been GWAS-motivated rather than the conventional biological-based candidate gene studies. Thus, candidate gene studies appear to have been conducted more for the purpose of replicating GWAS results, rather than providing new insights on the genetic mechanism of schizophrenia.

The results of our meta-analyses are not without notable limitations. First, our quality control procedures attempted to identify studies that had obvious overlapping



samples. However, we cannot guarantee duplicate samples were not included and as such estimated pooled effect sizes could be negatively or positively biased. Second, several loci identified in the candidate gene meta-analyses had larger than would be expected pooled odds ratios ($OR < 0.8$, $OR > 1.2$) due to the limited sample sizes available. In fact, three (*PDE4B*, *TRAM11/NDST3*, *ARVCF*) of the eight Bonferroni-significant loci identified in the candidate gene meta-analyses did not remain significant in the expanded meta-analyses, warranting cautious interpretation and further validation of these loci. Third, the exclusion of non-English articles and limited success at obtaining access to unpublished data from authors of otherwise eligible studies might have biased our results. Fourth, we did not employ analytical approaches commonly used in single SNP-based meta-analyses to estimate pooled effects under various genetic models (e.g. dominant, recessive) or among haplotypes, nor did we employ meta-regression techniques to adjust

for potential confounding factors. These decisions were based on the data available to us for the majority of studies we identified and the difficulty of obtaining the necessary data from authors to adequately perform these additional analyses. Fifth, population stratification is a major bias that can affect genetic association results and is rarely accounted for in candidate gene association studies. Finally, the random-effects model is typically viewed as a conservative approach to meta-analyses; however, in the context of funnel plot asymmetry (i.e. effect estimates are related to standard errors) random-effects models can attenuate the influence of large studies and inflate the influence of small studies.

In sum, we have provided the first comprehensive update of the schizophrenia genetics knowledgebase since the decommissioning of the SZGene database in 2011². Although candidate gene studies were an essential contributor to schizophrenia genetics a decade ago, our study findings suggest that these studies have had a modest

contribution to the understanding of schizophrenia since the emergence of GWAS technology. Despite these findings, traditional candidate gene studies will likely continue but we anticipate that these studies will be used more frequently to follow-up GWAS implicated genetic variants within deeply phenotyped individuals from which greater insights on the clinical and functional relevance of these variants may be gained.

Acknowledgements

We express our gratitude to all of participants involved in the study. We acknowledge the SzGene study for their database of genetic association studies in schizophrenia. We would also like to acknowledge the Psychiatric GWAS Consortium (PGC) for making their valuable results publicly available. The Chinese GWAS set 1 was supported by grants from the National Key R&D Program of China (2016YFC1307000), the National Natural Science Foundation of China (91432304, 81571313). The Chinese GWAS set 2 was supported by grants from the 973 Program (2015CB559100), the National Key R&D Program of China (2016YFC0903402), the National Science Foundation of China (31325014, 81421061, 81130022, 81701321, 31770800 and 81571329), the Program of Shanghai Subject Chief Scientist (15XD1502200), the National Program for Support of Top-Notch Young Professionals to Y.S., the 'Shu Guang' project supported by the Shanghai Municipal Education Commission and Shanghai Education Development Foundation (12SG17 to Y.S.). The Chinese GWAS set 3 was supported by grants from the Primary Research & Development Plan of Jiangsu Province (BE2016630). The Korean GWAS set was supported by grant of the Korea Healthcare technology R&D Project, Ministry of Health & Welfare, Republic of Korea (no. A101023). C.P. was supported by a NHMRC Senior Principal Research Fellowship (1105825). C.B. was supported by the Alberta Children's Research Institute and Cumming School of Medicine, University of Calgary.

Author details

¹Melbourne Neuropsychiatry Centre, Department of Psychiatry, University of Melbourne, Melbourne, VIC, Australia. ²Department of Human Genetics, Graduate School of Public Health, University of Pittsburgh, Pittsburgh, PA, USA. ³Department of Neuropsychiatry, Osaka Medical College, Osaka, Japan. ⁴Florey Institute of Neuroscience and Mental Health, University of Melbourne, Melbourne, VIC, Australia. ⁵Department of Psychiatry, National University of Malaysia, Kuala Lumpur, Malaysia. ⁶Department of Pharmacy, Brac University, Dhaka, Bangladesh. ⁷Laboratory for Statistical Analysis, RIKEN Center for Integrative, Medical Sciences, Yokohama, Japan. ⁸Laboratory for Omics Informatics, Omics Research Center, National Cerebral and Cardiovascular Center, Osaka, Japan. ⁹Institute of Mental Health, Peking University Sixth Hospital, Beijing, China. ¹⁰Key Laboratory of Mental Health, Ministry of Health and National Clinical Research Center for Mental Disorders (Peking University), Beijing, China. ¹¹Peking-Tsinghua Joint Center for Life Sciences/PKU-IDG/McGovern Institute for Brain Research, Peking University, Beijing, China. ¹²Department of Psychiatry, The Affiliated Wuxi Mental Health Center of Nanjing Medical University, Wuxi, China. ¹³Department of Psychiatry, Jining Medical University, Jining, China. ¹⁴Department of Genetic Epidemiology, SNP Genetics, Inc., Seoul, Korea. ¹⁵Department of Life Science, Sogang University, Seoul, Korea. ¹⁶Department of Psychiatry, Fujita Health University School of Medicine, Toyoake, Japan. ¹⁷RIKEN Center for Integrative Medical Sciences, Yokohama, Japan. ¹⁸Soon Chun Hyang University Hospital, Seoul, Korea. ¹⁹Center for Genomic Medicine, Kyoto University Graduate School of Medicine, Kyoto, Japan. ²⁰Bio-X Institutes, Key Laboratory for the Genetics of Developmental and Neuropsychiatric Disorders, Ministry of Education, Shanghai Jiao Tong University, Shanghai, China. ²¹Institute of Psychiatry, Psychology, and Neuroscience, King's College London, London, UK. ²²South London and Maudsley NHS Foundation Trust, London, UK. ²³Department of Electrical and Electronic Engineering, Centre for Neural Engineering (CFNE), University of Melbourne, Carlton South, VIC, Australia. ²⁴NorthWestern Mental

Health, Melbourne, VIC, Australia. ²⁵Departments of Medical Genetics, Psychiatry, and Physiology & Pharmacology, University of Calgary, Calgary, AB, Canada

Author contributions

C.L. conceived and designed the study. C.B., I.E. and C.P. supervised all aspects of the work. C.L., Y.T., S.S. and C.B. performed literature review. C.L. and Serafino M. developed analysis scripts. C.L. performed bioinformatics and statistical analyses. C.B., C.L. and T.K. interpreted the main findings. A.T., D.Z., F.Z., H.Y., H.S., H.C., M.I., M.K., N.I., S.W., W.Y., Y.K., Y.S. and Z.L. performed GWAS data collection and management. All authors revised and approved the final manuscript.

Data availability

Data used for meta-analyses are provided in the Supplementary Data S1 and the R script used for meta-analyses is available upon request.

Conflict of interest

The authors declare that they have no conflict of interest.

Publisher's note

Springer Nature remains neutral with regard to jurisdictional claims in published maps and institutional affiliations.

Supplementary Information accompanies this paper at (<https://doi.org/10.1038/s41398-019-0532-4>).

Received: 13 May 2019 Accepted: 20 June 2019

Published online: 27 August 2019

References

- Working Group of the Psychiatric Genomics Consortium. Biological insights from 108 schizophrenia-associated genetic loci. *Nature* **511**, 421–427 (2014).
- Allen, N. C. et al. Systematic meta-analyses and field synopsis of genetic association studies in schizophrenia: the SzGene database. *Nat. Genet.* **40**, 827–834 (2008).
- Altman, D. G. & Bland, J. M. How to obtain the confidence interval from a P value. *BMJ* **343**, d2090 (2011).
- DerSimonian, R. & Laird, N. Meta-analysis in clinical trials. *Control. Clin. trials* **7**, 177–188 (1986).
- Viechtbauer, W. & Cheung, M. W.-L. Outlier and influence diagnostics for meta-analysis. *Res. Synth. methods* **1**, 112–125 (2010).
- Harbord, R. M., Egger, M. & Sterne, J. A. C. A modified test for small-study effects in meta-analyses of controlled trials with binary endpoints. *Stat. Med.* **25**, 3443–3457 (2006).
- Wolfgang Viechtbauer. Conducting Meta Analyses in R with the metafor Package. *J. Stat. Softw.* **36**, 1–48 (2010).
- Sterne, J. A. C. et al. Recommendations for examining and interpreting funnel plot asymmetry in meta-analyses of randomised controlled trials. *BMJ* **343**, d4002 (2011).
- Liu, J. Z. et al. Meta-analysis and imputation refines the association of 15q25 with smoking quantity. *Nat. Genet.* **42**, 436–440 (2010).
- Winkler, T. W. et al. Quality control and conduct of genome-wide association meta-analyses. *Nat. Protoc.* **9**, 1192–1212 (2014).
- Shi, Y. et al. Common variants on 8p12 and 1q24.2 confer risk of schizophrenia. *Nat. Genet.* **43**, 1224–1227 (2011).
- O'Donovan, M. C. et al. Identification of loci associated with schizophrenia by genome-wide association and follow-up. *Nat. Genet.* **40**, 1053–1055 (2008).
- Johnson, E. C. et al. No evidence that schizophrenia candidate genes are more associated with schizophrenia than noncandidate genes. *Biol. Psychiatry* **82**, 702–708 (2017).
- Farrell, M. S. et al. Evaluating historical candidate genes for schizophrenia. *Mol. psychiatry* **20**, 555–562 (2015).