

Minerva Access is the Institutional Repository of The University of Melbourne

Author/s:

Fagerholm, R;Schmidt, MK;Khan, S;Rafiq, S;Tapper, W;Aittomäki, K;Greco, D;Heikkinen, T;Muranen, TA;Fasching, PA;Janni, W;Weinshilboum, R;Loehberg, CR;Hopper, JL;Southey, MC;Keeman, R;Lindblom, A;Margolin, S;Mannermaa, A;Kataja, V;Chenevix-Trench, G;Lambrechts, D;Wildiers, H;Chang-Claude, J;Seibold, P;Couch, FJ;Olson, JE;Andrulis, IL;Knight, JA;García-Closas, M;Figueroa, J;Hooning, MJ;Jager, A;Shah, M;Perkins, BJ;Luben, R;Hamann, U;Kabisch, M;Czene, K;Hall, P;Easton, DF;Pharoah, PDP;Liu, J;Eccles, D;Blomqvist, C;Nevanlinna, H

Title:

The SNP rs6500843 in 16p13.3 is associated with survival specifically among chemotherapy-treated breast cancer patients

Date:

2015-01-01

Citation:

Fagerholm, R., Schmidt, M. K., Khan, S., Rafiq, S., Tapper, W., Aittomäki, K., Greco, D., Heikkinen, T., Muranen, T. A., Fasching, P. A., Janni, W., Weinshilboum, R., Loehberg, C. R., Hopper, J. L., Southey, M. C., Keeman, R., Lindblom, A., Margolin, S., Mannermaa, A., ... Nevanlinna, H. (2015). The SNP rs6500843 in 16p13.3 is associated with survival specifically among chemotherapy-treated breast cancer patients. *Oncotarget*, 6 (10), pp.7390-7407. <https://doi.org/10.18632/oncotarget.3506>.

Persistent Link:

<https://hdl.handle.net/11343/260118>

License:

CC BY

The SNP rs6500843 in 16p13.3 is associated with survival specifically among chemotherapy-treated breast cancer patients

Rainer Fagerholm¹, Marjanka K. Schmidt², Sofia Khan¹, Sajjad Rafiq³, William Tapper³, Kristiina Aittomäki⁴, Dario Greco¹, Tuomas Heikkinen¹, Taru A. Muranen¹, Peter A. Fasching^{5,6}, Wolfgang Janni⁷, Richard Weinshilboum⁸, Christian R. Loehberg⁹, John L. Hopper¹⁰, Melissa C. Southey¹¹, Renske Keeman², Annika Lindblom¹², Sara Margolin¹³, Arto Mannermaa^{14,15,16}, Vesa Kataja¹⁷, Georgia Chenevix-Trench¹⁸, kConFab Investigators¹⁹, Diether Lambrechts^{20,21}, Hans Wildiers²², Jenny Chang-Claude²³, Petra Seibold²³, Fergus J. Couch²⁴, Janet E. Olson²⁵, Irene L. Andrulis^{26,27}, Julia A. Knight^{28,29}, Montserrat García-Closas^{30,31}, Jonine Figueroa³², Maartje J. Hooning³³, Agnes Jager³³, Mitul Shah³⁴, Barbara J. Perkins³⁴, Robert Luben³⁵, Ute Hamann³⁶, Maria Kabisch³⁶, Kamila Czene³⁷, Per Hall³⁷, Douglas F. Easton^{38,39}, Paul D.P. Pharoah^{34,38}, Jianjun Liu⁴⁰, Diana Eccles³, Carl Blomqvist⁴¹ and Heli Nevanlinna¹

¹ Department of Obstetrics and Gynecology, University of Helsinki and Helsinki University Hospital, Helsinki, Finland

² Netherlands Cancer Institute, Antoni van Leeuwenhoek hospital, Amsterdam, The Netherlands

³ Faculty of Medicine, University of Southampton, Southampton General Hospital, Southampton, UK

⁴ Department of Clinical Genetics, University of Helsinki and Helsinki University Hospital, Helsinki, Finland

⁵ Department of Gynecology and Obstetrics, University Hospital Erlangen, Friedrich-Alexander University Erlangen-Nuremberg, Erlangen, Germany

⁶ Department of Medicine, Division of Hematology and Oncology, University of California at Los Angeles, Los Angeles, CA, USA

⁷ Department of Gynecology and Obstetrics, University Hospital Ulm, Ulm, Germany

⁸ Division of Clinical Pharmacology, Department of Molecular Pharmacology and Experimental Therapeutics, Mayo Clinic College of Medicine, Mayo Medical School-Mayo Foundation, Rochester, MN, USA

⁹ University Breast Center Franconia, Department of Gynecology and Obstetrics, University Hospital Erlangen, Friedrich-Alexander University Erlangen-Nuremberg, Comprehensive Cancer Center Erlangen-EMN, Erlangen, Germany

¹⁰ Centre for Epidemiology and Biostatistics, Melbourne School of Population and Global Health, The University of Melbourne, Melbourne, Victoria, Australia

¹¹ Department of Pathology, The University of Melbourne, Melbourne, Victoria, Australia

¹² Department of Molecular Medicine and Surgery, Karolinska Institutet, Stockholm, Sweden

¹³ Department of Oncology - Pathology, Karolinska Institutet, Stockholm, Sweden

¹⁴ School of Medicine, Institute of Clinical Medicine, Pathology and Forensic Medicine, University of Eastern Finland, Kuopio, Finland

¹⁵ Cancer Center of Eastern Finland, University of Eastern Finland, Kuopio, Finland

¹⁶ Imaging Center, Department of Clinical Pathology, Kuopio University Hospital, Kuopio, Finland

¹⁷ Cancer Center, Kuopio University Hospital, Kuopio, Finland

¹⁸ Department of Genetics, QIMR Berghofer Medical Research Institute, Brisbane, Australia

¹⁹ Peter MacCallum Cancer Center, Melbourne, Victoria, Australia

²⁰ Vesalius Research Center (VRC), VIB, Leuven, Belgium

²¹ Laboratory for Translational Genetics, Department of Oncology, University of Leuven, Leuven, Belgium

²² Multidisciplinary Breast Center, Medical Oncology, University Hospital Leuven, Leuven, Belgium

²³ Division of Cancer Epidemiology, German Cancer Research Center (DKFZ), Heidelberg, Germany

²⁴ Department of Laboratory Medicine and Pathology, Mayo Clinic, Rochester, MN, USA

²⁵ Department of Health Sciences Research, Mayo Clinic, Rochester, MN, USA

²⁶ Lunenfeld-Tanenbaum Research Institute of Mount Sinai Hospital, Toronto, ON, Canada

- ²⁷ Department of Molecular Genetics, University of Toronto, Toronto, ON, Canada
- ²⁸ Prosserman Centre for Health Research, Lunenfeld-Tanenbaum Research Institute of Mount Sinai Hospital, Toronto, ON, Canada
- ²⁹ Division of Epidemiology, Dalla Lana School of Public Health, University of Toronto, Toronto, ON, Canada
- ³⁰ Division of Genetics and Epidemiology, Institute of Cancer Research, Sutton, UK
- ³¹ Breakthrough Breast Cancer Research Centre, Division of Breast Cancer Research, The Institute of Cancer Research, London, UK
- ³² Division of Cancer Epidemiology and Genetics, National Cancer Institute, Rockville, MD, USA
- ³³ Department of Medical Oncology, Erasmus MC Cancer Institute, 3008 AE Rotterdam, The Netherlands
- ³⁴ Centre for Cancer Genetic Epidemiology, Department of Oncology, University of Cambridge, UK
- ³⁵ Clinical Gerontology, Department of Public Health and Primary Care, University of Cambridge, Cambridge, UK
- ³⁶ Molecular Genetics of Breast Cancer, German Cancer Research Center (DKFZ), Heidelberg, Germany
- ³⁷ Department of Medical Epidemiology and Biostatistics, Karolinska Institutet, Stockholm, Sweden
- ³⁸ Centre for Cancer Genetic Epidemiology, Department of Public Health and Primary Care, University of Cambridge, Cambridge, UK
- ³⁹ Centre for Cancer Genetic Epidemiology, Department of Oncology, University of Cambridge, Cambridge, UK
- ⁴⁰ Human Genetics Division, Genome Institute of Singapore, Singapore
- ⁴¹ Department of Oncology, University of Helsinki and Helsinki University Hospital, Helsinki, HUS, Finland

Correspondence to: Heli Nevanlinna, **email:** heli.nevanlinna@hus.fi

Keywords: breast cancer, survival, SNP, chemotherapy, cell cycle

Received: December 19, 2015

Accepted: January 03, 2015

Published: March 10, 2015

This is an open-access article distributed under the terms of the Creative Commons Attribution License, which permits unrestricted use, distribution, and reproduction in any medium, provided the original author and source are credited.

ABSTRACT

We have utilized a two-stage study design to search for SNPs associated with the survival of breast cancer patients treated with adjuvant chemotherapy. Our initial GWS data set consisted of 805 Finnish breast cancer cases (360 treated with adjuvant chemotherapy). The top 39 SNPs from this stage were analyzed in three independent data sets: iCOGS (n=6720 chemotherapy-treated cases), SUCCESS-A (n=3596), and POSH (n=518). Two SNPs were successfully validated: rs6500843 (any chemotherapy; per-allele HR 1.16, 95% C.I. 1.08-1.26, $p=0.0001$, $p_{(adjusted)}=0.0091$), and rs11155012 (anthracycline therapy; per-allele HR 1.21, 95% C.I. 1.08-1.35, $p=0.0010$, $p_{(adjusted)}=0.0270$). The SNP rs6500843 was found to specifically interact with adjuvant chemotherapy, independently of standard prognostic markers ($p_{(interaction)}=0.0009$), with the rs6500843-GG genotype corresponding to the highest hazard among chemotherapy-treated cases (HR 1.47, 95% C.I. 1.20-1.80). Upon *trans*-eQTL analysis of public microarray data, the rs6500843 locus was found to associate with the expression of a group of genes involved in cell cycle control, notably *AURKA*, the expression of which also exhibited differential prognostic value between chemotherapy-treated and untreated cases in our analysis of microarray data. Based on previously published information, we propose that the eQTL genes may be connected to the rs6500843 locus via a RBF1-FOXM1-mediated regulatory pathway.

INTRODUCTION

Breast cancer is the most common type of malignancy and one of the leading causes of death among women worldwide. Susceptibility to the disease is heavily influenced by inherited factors, with roughly 50% of familial breast cancer risk attributable to genetic

variation [1, 2]. Genetic variation also contributes to the phenotypic spectrum of the disease, with both high-penetrance and common variants associating with various histopathological features, most notably estrogen receptor status [3].

The impact of genetic variation on breast cancer prognosis is less well understood. The prognosis and

indicated treatment for breast cancer is influenced by tumor grade, stage, HER2 expression, and hormone receptor status [4, 5], and it is plausible that genetic variants associated with these features would be of prognostic and predictive interest. Additionally, genetic variation may contribute to breast cancer survival independently of these markers, potentially by affecting the efficacy of the treatment. For example, prognostic and predictive SNPs have been reported in the *TP53* gene and its regulatory network, as well as in genes involved in oxidative stress [6-10]. Such findings have emerged primarily from candidate gene based approaches, as more comprehensive GWS-based survival analyses tend to be problematic due to issues of statistical power: very large sample sizes are required to reach GWS significance. The collaborative iCOGS genotyping project [2] now enables this type of a study, with over 30,000 genotyped breast cancer cases eligible for survival analysis, of which 17828 cases have adjuvant treatment information available, although it can still be challenging to detect modest effect sizes in smaller subgroups, such as genetic effects that modulate survival after a specific type of adjuvant treatment.

We have utilized a two-stage study design to search for genetic variants associated with survival after adjuvant chemotherapy in breast cancer. First, we conducted an initial pilot GWS in an event-enriched set of 805 Finnish breast cancer cases. We then sought to validate our findings in an independent validation material consisting of three separate studies: iCOGS [2], POSH [11], and SUCCESS-A (dbGaP Study Accession: phs000547.v1.p1). SNPs associated with survival after treatment were further characterized using eQTL analysis in two large gene expression data sets and subsequent *in silico* analyses.

RESULTS

rs6500843 and rs11155012 are associated with survival after adjuvant chemotherapy

Initially, a genome-wide study (Stage I: HEBCS-GWS; n = 805) was conducted to discover candidate SNPs that may be associated with breast cancer survival, with an emphasis on treatment-based subgroups. This initial stage of the analysis was carried out using three different endpoints in parallel: five-year BDDM (breast cancer death or distant metastasis), 10-year breast cancer specific survival, and 10-year overall survival, using a codominant genetic model (test for heterogeneity between genotypes). We used fairly lenient statistical criteria to select candidate SNPs at this stage: a SNP would be selected for validation if it fulfilled any of the following criteria: 1) main effect $p < 10^{-4}$ and $p < 0.01$ among chemotherapy-treated cases, 2) $p < 10^{-4}$ among chemotherapy-treated cases, or 3) $p < 10^{-3}$ among chemotherapy-treated cases and a homozygote-

associated hazard ratio > 3.0 . In total, we identified 45 putative hits from this Stage I pilot that were represented by 39 nominal and tagging SNPs on the iCOGS chip (Supplementary Table 1).

The candidate SNPs from Stage I were then analyzed in Stage II, comprising of the iCOGS, POSH and SUCCESS-A data sets. All Stage II survival analyses were restricted to cases who had received adjuvant chemotherapy. The analyses were run under the additive genetic model with left-truncated follow-up times, adjusted for patient age at diagnosis, and (in the case of iCOGS) stratified by study. Ten-year overall survival (death from any cause) was used as the end-point in these analyses for reasons of data availability and consistency. Three of the SNPs were statistically significant at this stage (Benjamini-Hochberg-adjusted $p < 0.05$): rs6500843 (any chemotherapy; HR 1.16, 95% C.I. 1.08 - 1.26, $p = 0.0001$, $p_{(\text{adjusted})} = 0.0091$); rs4502225 (any chemotherapy; HR 0.78, 95% C.I. 0.67 - 0.90, $p = 0.0007$, $p_{(\text{adjusted})} = 0.0263$); and rs11155012 (anthracycline therapy; HR 1.21, 95% C.I. 1.08 - 1.35, $p = 0.0010$, $p_{(\text{adjusted})} = 0.0270$) (Table 1). Of these, the calculated hazard ratio for rs4502225 was in the opposite direction than in Stage I, and therefore this SNP cannot be considered a validated hit.

Finally, we performed a meta-analysis of both the Stage I and Stage II data sets, resulting in very slight improvement in the precision of the per-allele HR estimates for the remaining two SNPs: HR 1.18 (95% C.I. 1.10 - 1.27; $p = 6.96 \times 10^{-6}$) for rs6500843 in the chemotherapy-treated group, and HR 1.23 (95% C.I. 1.11 - 1.37; $p = 8.41 \times 10^{-5}$) for rs11155012 in the anthracycline-treated group. See Figure 1 for forest plots displaying hazard ratios from Stage I and Stage II data sets, as well as from individual participant studies within the iCOGS data set. We detected nominally significant heterogeneity ($p = 0.048$) among the data sets in the rs6500843 analysis, indicating some disagreement between data sets; the SNP-associated increased hazard was not seen in the SUCCESS-A data set. No heterogeneity was observed in the case of rs11155012 ($p = 0.415$). Neither rs6500843 nor rs11155012 were associated with tumor histopathological characteristics (Supplementary Table 2), nor were the survival analyses described above adjusted for patient or tumor characteristics except age at diagnosis. More detailed phenotypes were taken into account in the subsequent interaction analyses (see below).

rs6500843 interacts with adjuvant chemotherapy in multivariate survival analysis

Next, we investigated whether the observed survival effects are specific to the chemotherapy-treated subgroup, and whether these effects occur independently of standard prognostic factors. To this end, we tested for interaction between treatment and the rs6500843 and rs11155012 SNP genotypes in multivariate Cox proportional hazards

Table 1: Survival statistics for the three SNPs associated with 10-year overall survival in the Stage II analysis.

		rs6500843	rs4502225	rs11155012
Chromosome		16	16	6
Position		6 870 855	78 424 831	139 151 784
Genes in LD region		<i>RBFOX1</i>	<i>WWOX</i>	<i>ECT2L</i> , <i>CCDC28A</i>
Subgroup		Chemotherapy+	Chemotherapy+	Anthracycline+
Model		additive	additive	additive
Stage I (HEBCS-GWS)				
	p-value	0.0081	0.0045	0.0073
	HR	1.36	1.55	1.50
	95% C.I.	1.08-1.70	1.14-2.09	1.12-2.02
Stage II (iCOGS, POSH, SUCCESS-A)				
	p-value	0.0001	0.0007	0.0010
	(Adjusted)*	0.0091	0.0263	0.0270
	HR	1.16	0.78	1.21
	95% C.I.	1.08-1.26	0.67-0.90	1.08-1.35
Meta-analysis (Stage I, Stage II)				
	p-value	6.96×10^{-6}	0.0594	8.41×10^{-5}
	HR	1.18	0.88	1.23
	95% C.I.	1.10-1.27	0.77-1.01	1.11-1.37
* Benjamini-Hochberg correction for multiple testing				

models adjusted for ER, grade, tumor size, and nodal metastasis. This analysis was only performed in the iCOGS data set, as it contains both treated and non-treated cases in abundant numbers, enabling robust interaction testing. A likelihood-ratio test comparing models with interaction terms with models with only independent covariates indicated an interactive effect between rs6500843 and adjuvant chemotherapy ($p_{(\text{interaction})} = 0.0009$, $N = 9680$ [1176 events]; Table 2), consistent with the finding that the SNP was associated with survival in the “any chemotherapy” subset in univariate analysis. See Figure 2 for a visualization of rs6500843-associated survival within the chemotherapy-treated and untreated subgroups in the iCOGS data set. Consistent with the additive model employed in the survival analyses, the genotype-specific hazard ratios for rs6500843 in the chemotherapy-treated group increase in an allele dose dependent manner ($HR_{(AG)} = 1.22$ (95% C.I. 1.00 - 1.49); $HR_{(GG)} = 1.47$ (95% C.I. 1.20 - 1.80)). In contrast, no heterogeneity between genotypes can be observed in the untreated group. The conclusion of the interaction analysis did not change when radiotherapy, surgery, and adjuvant endocrine therapy were added as

additional covariates in the model ($p_{(\text{interaction})} = 0.0035$, $N = 8943$ [1110 events]). Despite its association with survival in the anthracycline-treated and any chemotherapy treated subsets, no evidence of interaction was observed for the rs11155012 SNP (Supplementary Table 3), suggesting that its possible association with survival is not entirely treatment-specific.

eQTL analysis of SNPs in the survival-associated loci

To determine if rs6500483 or rs11155012, or other SNPs in the surrounding LD regions ($r^2 > 0.1$), associate with gene expression in breast cancer, two publicly available data sets (containing both genotype and gene expression data) were used for expression quantitative loci (eQTL) analysis: TCGA [12], and METABRIC [13]. We classified eQTLs as *cis* if they occurred within ± 1 Mb from any SNP in the LD region; any eQTLs outside these regions were classified as *trans*.

The SNP rs6500843 is located in chromosome 16, in an intron of the *RBFOX1* gene, which is the

only gene in the immediate LD region surrounding the SNP. The expanded *cis*-eQTL region (± 1 Mb) surrounding the SNP also contains the RNA coding genes *MIR8065*, *LINC01570*, and *LOC102723308*, as well as the uncharacterized gene *LOC440337*. No *cis*-eQTLs were observed in the rs6500843 locus. When we examined *trans*-eQTLs, the expression levels of six genes were associated with genotypes in the rs6500843 locus; *MCM3*, *CENPM*, *PKMYT1*, *AURKA*, *KIFC1*, *TK1* (Bonferroni-corrected for all genes on the array; $p < 0.05$). In an enrichment analysis for Gene Ontology biological processes, using an arbitrary raw eQTL p-value threshold of $p < 10^{-5}$ to select an expanded candidate gene list, GO terms involved in cell cycle control, mitosis and DNA replication emerged as highly significant for the *trans*-eQTLs (34 probes representing 28 genes) in the rs6500843 locus (Table 3). Note that rs6500843 itself was not present in the data set, nor were any SNPs in complete LD with it. The vast majority of eQTLs in this region are associated with the SNPs rs6500842 (r^2 0.54, D' 0.87 with rs6500843) and rs7205424 (r^2 0.26, D' 0.53), suggesting

a biologically significant role for the haplotype(s) tagged by these two SNPs.

The LD region around rs11155012 contains two genes: *CCDC28A* and *ECT2L*. In total, 34 genes are located in the expanded *cis*-eQTL region around this locus. One nominally significant *cis*-eQTL was observed in this region, and occurred as a positive correlation between the rare allele of rs9321678 ($r^2 = 0.147$, $D' = 1$ with rs11155012) and the neighboring *CCDC28A* gene ($t = 2.003$, $p = 0.0454$). In the *trans*-eQTL analysis, the rs11155012 locus was associated with the expression of the genes *CHRFAM7A*, *CRYBB2*, *RASGRP4*, *MOCSI*, *SOX21*, and *UPK3B*. No statistically significant GO term enrichment was detected for the rs11155012 locus.

The complete *trans*-eQTL results for both loci are presented in detail in Supplementary Table 4.

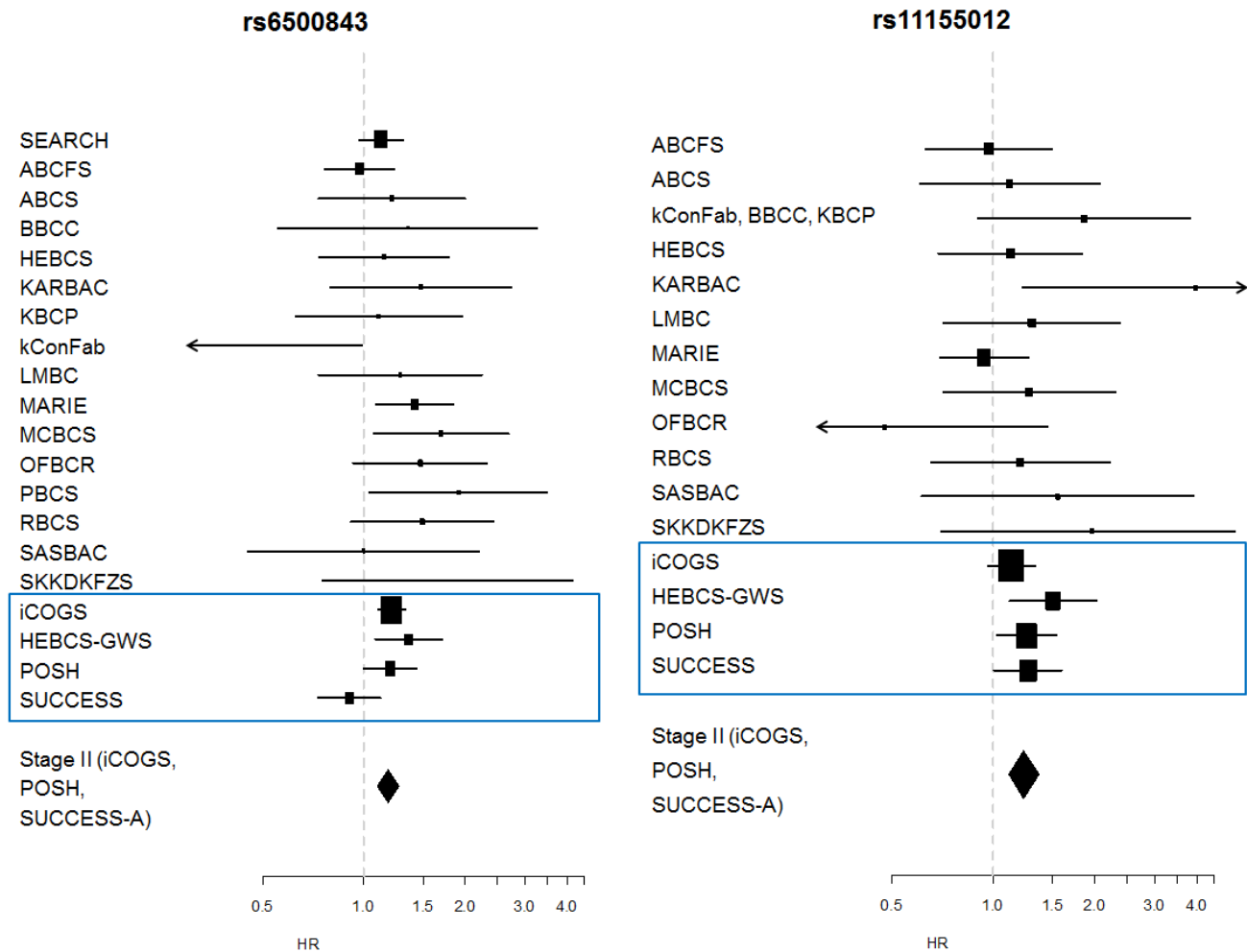


Figure 1: Forest plots depicting study-wise hazard ratios for the statistically significant SNPs detected in Stage II. a) Hazard ratios for rs6500843 among cases treated with any adjuvant chemotherapy (additive model); **b)** Hazard ratios for rs11155012 among anthracycline-treated cases (additive model).

Table 2: Multivariate Cox proportional hazards model constructed to detect interaction between the SNP rs6500843 and treatment (any adjuvant chemotherapy).

Model without interaction

	HR	95% C.I.	p
rs6500843	1.05	0.97 - 1.14	0.240
Chemotherapy	1.16	0.99 - 1.35	0.066
Age	1.04	1.04 - 1.05	< 10 ⁻¹⁶
Grade	1.40	1.27 - 1.54	8.5 × 10 ⁻¹²
ER	0.75	0.64 - 0.86	8.1 × 10 ⁻⁵
T	1.53	1.39 - 1.69	< 10 ⁻¹⁶
N	2.03	1.78 - 2.31	< 10 ⁻¹⁶

(Likelihood ratio test=640 on 10 df, p=0 n= 9680, number of events= 1176)

Model with an interaction term (rs6500843:Chemotherapy)

	HR	95% C.I.	p
rs6500843	0.93	0.84 - 1.04	0.210
Chemotherapy	0.60	0.40 - 0.92	0.018
Age	1.04	1.04 - 1.05	< 10 ⁻¹⁶
Grade	1.40	1.27 - 1.54	6.4 × 10 ⁻¹²
ER	0.74	0.64 - 0.86	7.3 × 10 ⁻⁵
T	1.53	1.39 - 1.69	< 10 ⁻¹⁶
N	2.03	1.78 - 2.32	< 10 ⁻¹⁶
rs6500843:Chemotherapy	1.33	1.12 - 1.58	9.6 × 10 ⁻⁴

(Likelihood ratio test=651 on 11 df, p=0 n= 9680, number of events= 1176)

Likelihood ratio test between models: chisq=10.98, df=1, p = 0.000921

Expression based survival analysis of the genes associated with the rs6500483 and rs11155012 loci

Next, we utilized the Kaplan-Meier Plotter database [14] to investigate whether any of the genes surrounding our statistically significant SNPs are associated with breast cancer survival (10 year relapse-free survival) at the gene expression level. Regions of interest were defined as regions containing SNPs with $r^2 > 0.2$ to the nominal SNP. The region for rs11155012 contained two genes (*ECT2L*, *CCDC28A*), and the region for rs6500483 contained one (*RBFox1/A2BP1*). These candidate genes were analyzed in the “any adjuvant chemotherapy” category, as information on specific types of chemotherapy was not available in the database. Among these cases (N = 425), high expression of the gene *CCDC28A* was associated with better prognosis (p = 0.00012, HR 0.5, 95% C.I. 0.35 - 0.72) (Supplementary Figure 1). It was also associated with prognosis in the full data set, irrespective of treatment (N = 3455, p = 0, HR 0.56, 95% C.I. 0.49 - 0.63). This is

consistent with the results of the *cis*-eQTL analysis: the rare allele of rs9321678 was associated with increased *CCDC28A* expression, which in turn is associated with better prognosis. The rare alleles of rs11155012 and rs9321678 segregate in different haplotypes (negative correlation), as can be deduced from the LD information ($r^2 = 0.147$, $D' = 1$, MAFs are roughly equal [0.20 and 0.18, respectively]). Consequently, the rare allele of rs11155012 would be expected to associate with worse prognosis, which is indeed the case in our SNP survival analysis. Of the trans-eQTL genes associated with the rs11155012 locus, the genes *CHRFAM7A*, *CRYBB2*, *MOCS1* and *SOX21* were associated with survival among all cases in the KM-Plotter analysis, whereas only one (*SOX21*) was associated with survival among chemotherapy-treated cases (Supplementary Table 5). Significant heterogeneity (p = 0.0044; 0.0239 after BH-adjustment for multiple testing) was observed for *SOX21*: high *SOX21* associated with better prognosis among untreated cases (HR 0.82, 95% C.I. 0.69 – 0.98), but the effect was reversed among

Table 3: Pathway-enrichment analysis of putative trans-eQTLs associated with rs6500843. Only statistically significant GO terms are shown (BH-corrected $p < 0.05$). Genes with a statistically significant eQTL association are shown in bold; the remaining genes have been included using a more inclusive p-value threshold of $p < 10^{-5}$. In total, 28 genes were included in the pathway enrichment analysis.

GO accession	description	N	Fold enr.	p	Genes
GO:0007049	cell cycle	15	10.90	1.88×10^{-12}	EXO1, KIFC1 , PRC1, BLM, FOXM1, PKMYT1 , AURKA , BIRC5, CHEK2, UBE2C, MCM3 , MCM6, UHRF1, KPNA2, CDCA5
GO:0022403	cell cycle phase	10	13.62	1.21×10^{-8}	EXO1, KIFC1 , PRC1, BLM, PKMYT1 , BIRC5, AURKA , UBE2C, KPNA2, CDCA5
GO:0000279	M phase	9	15.42	4.01×10^{-8}	EXO1, KIFC1 , PRC1, PKMYT1 , BIRC5, AURKA , UBE2C, KPNA2, CDCA5
GO:0000278	mitotic cell cycle	9	13.71	9.94×10^{-8}	KIFC1 , PRC1, BLM, PKMYT1 , BIRC5, AURKA , UBE2C, KPNA2, CDCA5
GO:0022402	cell cycle process	10	9.98	1.75×10^{-7}	EXO1, KIFC1 , PRC1, BLM, PKMYT1 , BIRC5, AURKA , UBE2C, KPNA2, CDCA5
GO:0006259	DNA metabolic process	8	8.91	1.43×10^{-5}	EXO1, UHRF1, BLM, POLQ, MCM3 , KPNA2, TK1 , MCM6
GO:0007067	mitosis	6	15.37	2.88×10^{-5}	KIFC1 , PKMYT1 , BIRC5, AURKA , UBE2C, CDCA5
GO:0000280	nuclear division	6	15.37	2.88×10^{-5}	KIFC1 , PKMYT1 , BIRC5, AURKA , UBE2C, CDCA5
GO:0000087	M phase of mitotic cell cycle	6	15.10	3.14×10^{-5}	KIFC1 , PKMYT1 , BIRC5, AURKA , UBE2C, CDCA5
GO:0048285	organelle fission	6	14.77	3.49×10^{-5}	KIFC1 , PKMYT1 , BIRC5, AURKA , UBE2C, CDCA5
GO:0006260	DNA replication	5	14.83	2.71×10^{-4}	BLM, POLQ, MCM3 , TK1 , MCM6
GO:0051329	interphase of mitotic cell cycle	4	21.89	6.80×10^{-4}	BLM, BIRC5, KPNA2, CDCA5
GO:0051325	interphase	4	21.27	7.39×10^{-4}	BLM, BIRC5, KPNA2, CDCA5
GO:0007017	microtubule-based process	5	11.14	7.99×10^{-4}	KIFC1 , PRC1, AURKA , UBE2C, KPNA2
GO:0051301	cell division	5	9.55	0.001414	KIFC1 , PRC1, BIRC5, UBE2C, CDCA5
GO:0051726	regulation of cell cycle	5	8.51	0.002157	BLM, PKMYT1 , BIRC5, CHEK2, UBE2C

chemotherapy-treated cases (HR 1.45, 95% C.I. 1.02 – 2.06).

Expression of the *RBFOX1* gene at the rs6500483 locus did not associate with survival in the KM-plotter database, either among chemotherapy-treated cases or among all cases. In contrast, all six trans-eQTL genes associated with the rs6500843 locus (*MCM3*, *CENPM*, *PKMYT1*, *AURKA*, *KIFC1*, *TK1*) were associated with survival when analyzing all cases irrespective of treatment,

as well as among cases who specifically had not received systemic chemotherapy. All other genes but *AURKA* associated also with survival among cases treated with adjuvant chemotherapy (Supplementary Table 5) which would suggest a treatment-independent effect for most of these genes. However, a test of heterogeneity between the treated and non-treated groups indicated a statistically significant difference in *AURKA*-associated survival between treated and non-treated cases (heterogeneity

Table 4: Description of the data sets used in this study.

	HEBCS GWS	POSH GWS	SUCCESS-A	iCOGS
No. of cases	805	536	3596	17828
Vital status				
Alive	466 (58%)	300 (56%)	3389 (94%)	15630 (88%)
Deceased: all-cause	339 (42%)	236 (44%)	207 (6%)	2198 (12%)
Follow-up mean \pmSD (years)	10.6 \pm 6.6	4.1 \pm 2.0	3.9 \pm 1.7	7.3 \pm 4.0
Age at diagnosis, mean [range]	54.1 [22 - 87]	35.8 [18 - 41]	53.6 [19 - 85]	55.2 [19 - 95]
ER				
Negative	230 (29%)	370 (69%)	1106 (31%)	3002 (17%)
Positive	513 (64%)	165 (31%)	2458 (68%)	11753 (66%)
Missing data	62 (8%)	1 (0.2%)	32 (1%)	3073 (17%)
Grade				
1	144 (18%)	13 (2%)	165 (5%)	2911 (16%)
2	312 (39%)	84 (16%)	1698 (47%)	6354 (36%)
3	280 (35%)	422 (79%)	1698 (47%)	4414 (25%)
Missing data	69 (9%)	17 (3%)	35 (1%)	4149 (23%)
T / tumor size category ^a				
1	390 (48%)	232 (43%)	1464 (41%)	9338 (52%)
2	304 (38%)	236 (44%)	1856 (52%)	4615 (26%)
3	50 (6%)	49 (9%)	192 (5%)	635 (4%)
4	47 (6%)	12 (2%)	50 (1%)	<i>n/a</i>
Missing data	14 (2%)	7 (1%)	34 (1%)	3240 (18%)
N (nodal metastasis)				
Negative	338 (42%)	248 (46%)	1248 (35%)	8976 (50%)
Positive	446 (55%)	262 (49%)	2311 (64%)	5471 (31%)
Missing data	21 (3%)	26 (5%)	37 (1%)	3381 (19%)
M (distant metastasis)				
Negative	740 (92%)	481 (90%)	3487 (97%)	2834 (16%)
Positive	57 (7%)	50 (9%)	4 (0.1%)	267 (1.5%)
Missing data	8 (1%)	5 (1%)	105 (2.9%)	14727 (83%)
Adjuvant chemotherapy treatment				
No adjuvant chemotherapy	445 (55%)	18 (3.4%)	0 (0%)	11108 (62%)
Anthracycline+Taxane	14 (2%)	129 (24%)	3596 (100%)	733 (4%)
Anthracycline	191 (24%)	375 (70%)	-	2277 (13%)
Taxane	2 (0.2%)	8 (1.5%)	-	135 (0.8%)
Methotrexate	153 (19%)	4 (0.7%)	-	1022 (6%)
Missing data	-	-	-	2528 (14%)
Adjuvant Endocrine treatment				
Treated	282 (35%)	183 (34%)	2458 (68%)	11340 (64%)
Not treated	520 (65%)	344 (64%)	1138 (32%)	5670 (32%)
Missing data	3 (0.4%)	9 (1.7%)	-	818 (5%)

^a T was acquired from TNM staging for HEBCS, POSH, SUCCESS-A, and derived from tumor diameter in iCOGS (1: \leq 2cm, 2: $>$ 2cm and \leq 5cm, 3: $>$ 5cm); T4 (inflammatory carcinoma) is therefore undefined for iCOGS.

p=0.021 after BH-adjustment for multiple testing); while high *AURKA* expression associated with poor survival in untreated cases, no such effect was seen in chemotherapy-treated cases.

Next, we investigated the possible connection between the rs6500843 locus and the trans-eQTL genes. Rs6500843 is located in an intron of *RBFOX1*, a tissue-specific splicing regulator, for which target genes have been previously published [15]. Given that the genetic neighborhood around rs6500843 contains no other protein coding genes, and little is known about the three RNA coding genes in the region, we operated here under the hypothesis that the SNP is functionally associated with the *RBFOX1* gene. As splice variants of gene products may give rise to different signals in microarray experiments, we cross-referenced the published list of *RBFOX1* targets against our expanded list of putative trans-eQTL genes (raw p < 10⁻⁵ in the eQTL analysis) that also fall within the enriched GO:0007049 (cell cycle) Gene Ontology group (Table 3), and came up with one gene:

the transcription factor *FOXM1*. Genome-wide target genes for *FOXM1* have also been previously published [16]; comparison of the statistically significant sites (combined genomic binding and coexpression) with our trans-eQTL list yielded four genes regulated by *FOXM1*: *EXO1*, *MCM6*, *UHRF1*, and *KPNA2*. These connections between the genomic locus and the eQTL genes have been schematically summarized in Figure 3.

The rs11155012 locus contains a genomic regulatory region

Finally, we investigated the possibility that the prognostic SNPs identified in this study are in linkage disequilibrium with other, functionally significant variants in their genomic vicinity. All SNPs in linkage disequilibrium (r² > 0.2) with rs6500843 and rs11155012 were analyzed using HaploReg, a database of genomic regulatory elements [17]. Rs11155012 is in high LD with a number of SNPs affecting a genomic enhancer

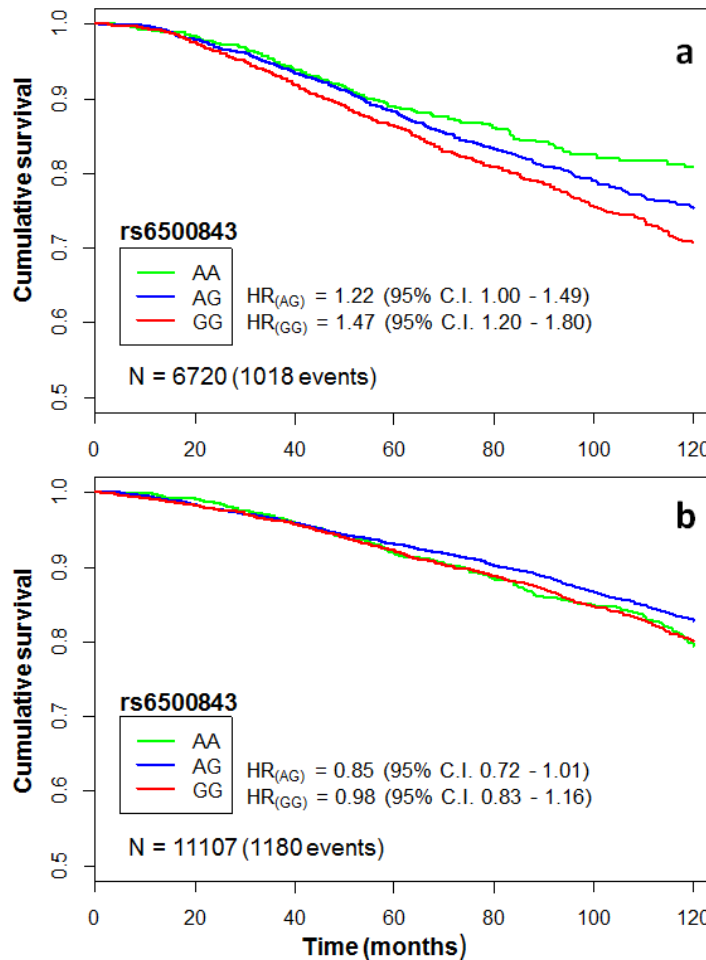


Figure 2: Kaplan-Meier curves illustrating cumulative 10-year overall survival among cases of the pooled iCOGS data set categorized by rs6500843 genotype. The HRs indicate genotype-specific hazard ratios relative to the reference genotype (AA). Censoring marks have been omitted to make the curves clearer. The data set has been subgrouped according to treatment: a) patients treated with any adjuvant chemotherapy, b) patients who did not receive adjuvant chemotherapy.

site (Supplementary Table 6) active in human mammary epithelial cells (HMEC). The site has been experimentally shown to bind the proteins FOXA1 and FOXA2, and a Foxa binding motif is predicted to be altered by rs6570291, a SNP in near-complete LD with rs11155012 ($r^2 = 0.99$).

Equally strong evidence of an active regulatory site was not observed for the rs6500843 locus. The SNP itself is predicted to alter 33 transcription factor binding motifs, mostly homeobox-containing tissue-specific transcription factors, but no supporting experimental evidence is present in the HaploReg data.

DISCUSSION

We have utilized three independent data sets to evaluate the significance of putative prognostic/predictive SNPs from an initial GWS pilot investigating survival after adjuvant chemotherapy in breast cancer. This analysis was carried out as a meta-analysis between iCOGS studies and two additional data sets (SUCCESS-A, POSH). Two loci emerged as statistically significant in the two-stage analysis: rs6500843 among cases treated with

any chemotherapy, and rs11155012 among cases treated with anthracyclines. Of these, rs6500843 was found to interact with adjuvant chemotherapy in a subsequent multivariate interaction analysis, reinforcing the notion that its association with survival may have a predictive basis: carriers of the rs6500843 G-allele appear to have somewhat worse survival than other chemotherapy-treated cases.

The only gene in the LD region surrounding rs6500843 is *RBFOX1* (*A2BP1*), which encodes a highly conserved RNA-binding protein involved in the control of tissue-specific mRNA splicing [18]. It has been identified as a common target of LOH and copy number variation in other types of malignancies [19-21], and a SNP in the gene (not in LD with rs6500843) has been reported to associate with survival in non-small-cell lung cancer [22], but little is known about its role in breast cancer. While the rs6500843 SNP is predicted to alter a homeobox transcription factor binding site targeted by 33 transcription factors, we did not find further experimentally verified evidence of a genetically modulated regulatory region in this locus, nor was *RBFOX1* gene expression itself associated with breast cancer survival. However, a *trans*-eQTL analysis of the

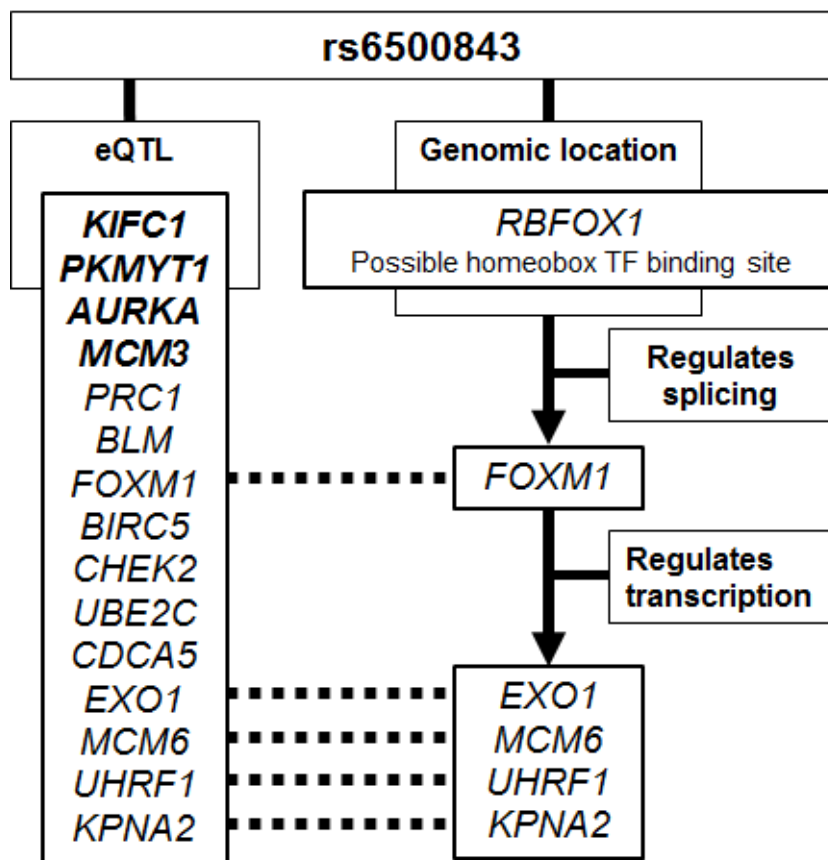


Figure 3: Schematic summary of the putative evidence connecting the rs6500843 SNP to the trans-eQTL SNPs associated with this locus. The eQTL genes marked in bold are associated with the rs6500843 locus at a statistically significant level after conservative Bonferroni correction; the remaining genes listed here are associated with SNP genotype at $p < 10^{-5}$, and also belong to the Gene Ontology group GO:0007049 (cell cycle) which was most strongly enriched in the DAVID analysis. *RBFOX1* and *FOXM1* target gene identification is based on previously published data [13, 14].

SNPs in the rs6500843 region identified six statistically significant genes, all of which were associated with survival in breast cancer in the *Kaplan-Meier Plotter* analysis (and five in the chemotherapy-only subgroup). Notably, the Aurora-A kinase (*AURKA*) associated with differential survival when comparing chemotherapy-treated and non-treated cases. High *AURKA* expression appeared to associate with poor survival in untreated cases, whereas no such effect was seen in chemotherapy-treated cases, which suggests a favorable response to the chemotherapy regimens administered to these cases. *AURKA* has been previously suggested to be a master regulator of cellular radio- and chemoresistance, proliferation, cell cycle progression and anchorage-independent growth [23].

In order to detect enriched Gene Ontology biological processes among the eQTL genes, we relaxed the criteria of statistical significance and analyzed a slightly larger list of candidate genes ($n = 28$). This set of candidates was strongly enriched for genes involved in cell cycle control (GO: 0007049; *cell cycle*): 15 out of 28 genes fell within this category, an 11-fold enrichment compared to a random selection of genes. The set of genes includes *EXO1*, knockdown of which has been reported to desensitize H196 lung cancer cells to paclitaxel treatment [24]; *KIF1C*, reported to modulate docetaxel sensitivity [25]; the breast cancer susceptibility gene *CHEK2* [26, 27]; the Bloom syndrome gene *BLM* [28]; and the Survivin gene *BIRC5*, reported to associate with chemo- and radioresistance in breast cancer [29]. It is intriguing to see this group of cell cycle control and chemoresistance-associated genes emerge in eQTL with a SNP associated with survival after chemotherapy, especially as there is a plausible connection between the rs6500843 locus and this set of trans-eQTL genes (Figure 3). Rs6500843 is located in an intron of *RBFOX1*, a tissue-specific splicing regulator that targets the proto-oncogene *FOXM1*, a transcription factor involved in cell cycle control. In our analyses, *FOXM1* itself emerged as a putative trans-eQTL gene associated with the rs6500843 locus, and it has been reported to regulate four other genes on that list: *EXO1*, *MCM6*, *UHRF1*, and *KPNA2*. Of these, *EXO1* is of particular interest, as the FOXM1-*EXO1* regulatory connection has been previously reported to modulate chemoresistance in ovarian carcinoma cells [30]. An important caveat to this analysis is that the SNP rs6500843 itself was not present in the eQTL data set, and the eQTL results are based on SNPs in incomplete linkage disequilibrium with it. The functional significance of rs6500843 itself, and the putative transcription factor binding site it resides in, therefore remains unclear.

The other SNP emerging as statistically significant in the validation analysis, rs11155012, is located in a LD region that contains two genes, *CCDC28A* and *ECT2L*, the biological functions of which are poorly understood. Our analysis of publicly available gene expression data [12] indicates that *CCDC28A* transcript abundance is associated

with relapse-free survival in breast cancer, which suggests that rs11155012 may be linked to a prognostically significant functional variant in this gene. Indeed, rs11155012 is in LD with a number of SNPs affecting a genomic enhancer site active in human mammary epithelial cells. The site has been experimentally shown to bind the proteins FOXA1 and FOXA2, and a Foxa binding motif is predicted to be altered by rs6570291, a SNP in near-complete LD with rs11155012 ($r^2 = 0.99$). FOXA1 (Hnf-3- α) is a key transcription factor involved in mechanisms known to be critical in breast carcinogenesis: estrogen receptor -mediated signaling, and cell cycle control in conjunction with BRCA1 [31, 32]. Furthermore, a modest *cis*-eQTL effect was observed between rs9321678 ($r^2 = 0.147$, $D' = 1$ with rs11155012) and the *CCDC28A* gene. We also detected a trans-eQTL between rs9495127 ($r^2 = 0.129$, $D' = 1$) and the transcription factor *SOX21*, a gene whose expression associates with increasing hazard among chemotherapy-treated cases despite being protective in untreated cases. While causality cannot be established without experimental work, these findings provide supporting evidence for an association between genetic variation in this regulatory site and breast cancer survival. The predictive value of this genetic locus remains questionable, however, as we did not observe an interaction between rs11155012 and treatment in the clinical data.

The hazard ratios for rs6500483 show some heterogeneity between the data sets used in this study: SUCCESS-A appears to disagree with the other data sets. Rs6500483 is represented in SUCCESS-A by rs4786939, but these two SNPs are in nearly complete linkage disequilibrium ($r^2 0.967$, $D' 1.0$), indicating that the use of a tagging SNP is an unlikely source of heterogeneity here. Heterogeneity between follow-up times and treatment regimens would be a more likely reason: the cases in SUCCESS-A have all received taxane-based therapy, a regimen poorly represented in the other data sets. Unfortunately, the specific chemotherapy agents involved in the genetic association cannot be resolved using our currently available data. Additionally, in light of our use of GWAS as a starting point, it must be noted that our findings do not reach genome-wide significance. However, the purpose of the initial Stage I GWAS was to define a candidate SNP set that would most likely capture any true survival-associated SNPs, the statistical significance of which would then be evaluated in the substantially more powerful Stage II analysis. We do not anticipate very large effect sizes in SNP-based survival analyses, and therefore utilized a stepwise study design to alleviate the problem of multiple testing and resultant loss of statistical power. Only 39 SNPs were analyzed in Stage II, two of which meet our criteria of statistical significance. Both findings are supported by additional lines of evidence from gene expression- and regulome-based analyses. Nevertheless, these results must be viewed as exploratory

and hypothesis-generating in nature.

In conclusion, we have conducted a two-stage genetic association study to detect SNPs associated with survival after chemotherapy. One SNP, rs6500843, was found to interact specifically with adjuvant chemotherapy, independently of standard prognostic markers, whereas rs11155012 may associate with survival in general. eQTL analysis of the rs6500843 locus identified a group of genes known to associate with cancer progression, chemoresistance, and survival. We propose that these genes may be connected to the rs6500843 locus via a RBFOX1-FOXMI-mediated regulatory pathway. If confirmed, these findings may aid in the development of better predictive markers and improved individualized cancer therapy.

MATERIALS AND METHODS

Study design

Initially, a genome-wide study (Stage I: HEBCS-GWS) was conducted to discover candidate SNPs that may be associated with breast cancer survival, with an emphasis on treatment-based subgroups. This candidate SNP set was then analyzed in three validation datasets (Stage II: iCOGS, SUCCESS-A, POSH). SNPs emerging as statistically significant within Stage II were further examined in an eQTL analysis of two breast cancer data sets (TCGA, METABRIC), supported by *in silico* genomic feature analysis. The data sets used in this study are described below, and summarized in Table 4. Informed consent has been obtained from all patients included in this study.

Discovery GWS (Stage I: HEBCS-GWS)

Genotype information was obtained from a study series consisting of 805 Finnish breast cancer cases (HEBCS-GWS). All cases were female, ascertained for their first primary invasive breast cancer. Of these, 423 cases originated from a prospective patient series of consecutive unselected, incident breast cancer patients treated in the Helsinki University Hospital Department of Oncology in years 1997–1998 and 2000 [33, 34]. The series also includes 140 cases recruited between 2001 and 2004, and 242 additional familial cases [7, 35]. To increase the statistical power of survival analyses, the GWS series was specifically enriched for cases with reduced survival (distant metastasis or death at the time of the initiation of the study in 2008): in total, the series includes 312 breast cancer specific events, and 339 any-cause mortality events at the time of analysis. The cancer diagnoses were confirmed through the Finnish Cancer Registry and hospital records. Information on the date and cause of

death was obtained from the Finnish Cancer Registry, a central database of diagnostic and death information on all cancer patients in Finland.

The HEBCS-GWS series (“Stage I”) was genotyped using the Illumina 550K platform as previously described [36]. The preliminary survival analysis was carried out using three different endpoints in parallel: five-year BDDM (breast cancer death or distant metastasis), 10-year breast cancer specific survival, and 10-year overall survival, using a codominant genetic model (test for heterogeneity between genotypes). Since survival after chemotherapy was the main focus of this study, it would have been ideal to entirely restrict the initial Stage I analysis only to chemotherapy-treated cases (comprising 45% of the data set; Table 4), given sufficient statistical power. To determine the feasibility of this approach, the R package ‘*survSNP*’ was employed to estimate the statistical power of our survival analysis [37]. Using a significance threshold of $p < 10^{-5}$ and a hypothetical SNP with a minor allele frequency of 0.25 as the *ad hoc* target for discovery, we had 80% power to detect a per-allele HR of 1.6 in the whole sample set, but only 32% power if the analysis was restricted to chemotherapy-treated cases only. Analysis of specific chemotherapy regimens would have decreased the statistical power further. Based on this, we concluded that a treatment-based subgroup analysis alone would be unacceptably underpowered. Therefore, to be eligible for subsequent validation, SNPs had to meet one of these three more inclusive criteria: 1) main effect $p < 10^{-4}$ and $p < 0.01$ among chemotherapy-treated cases, 2) $p < 10^{-4}$ among chemotherapy-treated cases, or 3) $p < 10^{-3}$ among chemotherapy-treated cases and a homozygote-associated hazard ratio > 3.0 . These SNPs ($n = 45$) were then selected as candidates for Stage II validation and genotyping as part of the iCOGS project [2].

Validation studies (Stage II: iCOGS, POSH, SUCCESS-A)

The candidate SNPs from Stage I were analyzed in three additional data sets: iCOGS, POSH, SUCCESS-A (described in detail below).

iCOGS

SNPs identified as putatively significant in Stage I HEBCS GWAS analysis of chemotherapy-treated cases were included on a custom Illumina Infinium array (iCOGS) for large scale genotyping of a data set of 50927 individuals from 52 Breast Cancer Association Consortium (BCAC) member studies, 41 of which were of predominantly European ancestry, 9 of Asian, and 2 of African-American ancestry. Genotyping and quality control was carried out as previously described [2].

Studies represented on the iCOGS chip were

included in survival analysis here if sufficient follow-up data was available, with a minimum requirement of at least 10 survival events (deaths from any cause) per study. Additionally, we included only studies with cases from predominantly European ancestry, and from which adjuvant chemotherapy information was available. At the individual level, we included only female cases ascertained for their first primary, invasive tumor. After these filtering steps, the data set consisted of 17828 eligible cases (2198 any-cause deaths; 12%), of which 6720 cases were treated with any adjuvant chemotherapy. Of these, 3010 cases were known to have been treated with anthracycline-based chemotherapy. While data on taxane ($n = 868$) and methotrexate-based ($n = 1022$) adjuvant treatment was also available, these treatments were not analyzed as separate subgroups due to the small sample sizes and poor comparability with the other data sets (Table 4). For 2528 cases, the specific type of chemotherapy regimen was unknown. The cases included here come from 16 separate BCAC studies, which have been described in Supplementary Table 7.

POSH GWS

The POSH GWS consisted of 536 individuals (236 any-cause deaths; 44%) selected from a consecutively ascertained cohort of early onset cases (diagnosed with invasive breast cancer at the age of 40 or earlier) from the United Kingdom. These cases were enrolled into the *Prospective study of Outcomes in Sporadic versus Hereditary breast cancer* (POSH) between 2000 and 2008, as previously described [38]. The POSH GWS material was enriched for cases with poor prognosis by including cases with triple-negative breast cancer ($n=401$), and cases with particularly short duration of breast cancer survival (<2 years, $n=48$); additional cases with relatively long survival were then included for contrast (>4 years, $n=125$) [39]. These cases were genotyped on the Illumina 660-Quad SNP array; genotyping and quality control was carried out as previously described [39]. 518 cases (97%) in this data set were treated with adjuvant chemotherapy.

SUCCESS-A

SUCCESS-A is a randomized Phase III study of response to treatment of early primary breast cancer with adjuvant therapy after surgical resection. The cases are all treated with anthracycline- and taxane-based adjuvant chemotherapy, and randomized for Gemcitabine treatment. The sample set consisted of 3596 cases (207 any-cause deaths; 6%) that were recruited between 2005 and 2007 from 250 study sites across Germany. Genotyping was carried out using the Illumina Human OmniExpress-FFPE BeadChip platform. The SUCCESS-A data as well as detailed descriptions of the materials and methodology

can be acquired from the NCBI database of Genotypes and Phenotypes (dbGaP Study Accession: phs000547.v1.p) [40].

Statistical analysis

In stage II, unless otherwise noted, 10-year overall survival (death from any cause) was used as the end point in all survival analyses, as all-cause mortality data was the most widely available in the iCOGS data set. This also allowed us to avoid the potential biases that can arise from clinical follow-up data in multicenter studies [41].

All survival analyses were run under the additive genetic model, follow-up times left-truncated, and adjusted for patient age at diagnosis, and (in the case of iCOGS) stratified by study in order to minimize potential biases arising from differing case recruitment strategies and different populations of origin. The analyses were performed within the same subgroups (chemotherapy-treated cases and anthracycline-specific analysis) as in stage I.

To alleviate potential biases arising from population stratification, e.g. cryptic relatedness of cases, the analysis was also adjusted for three genetic principal components to correct for possible population substructure. The principal components were calculated from the genotypes of uncorrelated ($r^2 < 0.2$) SNPs in the genome-wide data sets. Briefly, for the HEBCS-GWS, POSH and SUCCESS-A data sets, we pruned a subset of SNPs not in substantial LD with any other SNPs ($r^2 < 0.2$) and ran a principal component analysis (PCA) using the 'GenABEL' package in R. The PCA analysis for iCOGS has been described previously [2]; as with the other three data sets, only three principal components were used in this study.

The selected SNPs from the HEBCS-GWS data set (Stage I) were also re-analyzed at this point using the same parameters as with the validation data. This means that Stage I results were here re-analyzed only under the additive model (which can be expected to capture both dominant and recessive signals), regardless of the original selection criteria, reducing the amount of multiple testing in the final meta-analysis stage. While the original SNP selection was based on more inclusive criteria, the purpose of this was to ensure that the final results are directly comparable across the stages of the study. Thus, allele calling and quality control for HEBCS-GWS was performed as previously described [39], and the survival analysis was performed as described above. Similar to the validation data sets, principal component analysis (PCA) was included for HEBCS-GWS as well at this stage.

Results of the Stage II (iCOGS, POSH, SUCCESS-A) survival analysis were meta-analyzed under a fixed-effects model using the 'rmeta' package in R, and the resulting meta-statistics were used to determine statistical significance. Benjamini-Hochberg correction was applied to account for multiple testing [42].

Statistically significant SNPs in treatment-based subgroups were further tested for interaction with treatment in the iCOGS data set, as it contains both treated and non-treated cases in abundant numbers, enabling robust interaction testing. This analysis was adjusted for clinically relevant covariates (grade, ER, tumor size category [T], nodal status [N], age at diagnosis). Distant metastasis at diagnosis (M) was not included as a covariate, as this information was missing for the majority of cases. To avoid biases introduced by mostly missing data, cases known to be M1 were not specifically excluded from the analysis either. Two Cox proportional hazards models were generated, one with the SNP and treatment status as independent covariates, and one that also included an interaction term between genotype and treatment. The statistical significance of an interaction was then determined using a likelihood-ratio test between the two models. To rule out confounding effects caused by other treatment types, we also conducted a secondary interaction analysis where radiotherapy (yes/no), surgery (yes/no), and adjuvant endocrine therapy (yes/no) were added as additional covariates in the model.

We employed chi-square tests of heterogeneity to test for association between SNP genotypes and the following clinicopathological characteristics: estrogen receptor status (ER; positive or negative), histological grade (1 – 3), tumor size (T; 1 – 4), and lymph node metastasis (N; positive or negative) in the iCOGS data set.

eQTL analysis

To determine if the survival-associated SNPs or other SNPs in the LD region ($r^2 > 0.1$) associate with gene expression in breast cancer, two publicly available data sets (containing both genotype and gene expression data) were used for eQTL analysis: TCGA [12], and METABRIC [13]. The TCGA gene expression data is mRNA sequencing data from the Illumina HiSeq 2000 platform, whereas the METABRIC gene expression data was generated by the Illumina Human WG6 v3 platform. Tumor tissue genotyping had been carried out using the Affymetrix Genome Wide Human SNP array 6.0 for both data sets. Of the two validated SNPs, rs11155012 itself was represented on this SNP array, whereas rs6500843 was not. The latter was best represented by the linked SNPs rs4786121 and rs7190693 (r^2 0.603, D' 1.0 for both SNPs); note that all SNPs in the LD region with $r^2 > 0.2$ were nevertheless included in the eQTL analysis. The TCGA breast cancer data set consists of 913 solid breast tumor samples that also had genotype data available. METABRIC consists of 1328 solid breast tumor samples with both genotype and gene expression data. eQTL analysis was carried out by calculating linear models between genotype and gene expression using the R package 'MatrixEQTL' [43]. Only genes present in both data sets were included in the analysis: the TCGA

and METABRIC data sets were analyzed separately and then meta-analyzed to detect the most consistent results. We searched for *cis*-eQTLs within regions defined as ± 1 Mb from any SNP in the LD region; no formal multiple testing correction was applied to eQTL results within these regions. Any genes outside these regions were analyzed for *trans*-eQTL and subjected to transcriptome-wide multiple testing correction (Bonferroni).

In addition to looking for individual genes that are statistically significant in the eQTL analysis, we also ran a pathway-enrichment analysis on a set of candidate genes selected using a more lenient p-value threshold from the eQTL analysis (raw $p < 10^{-5}$). The analysis was restricted to Gene Ontology Biological Processes and was performed using the DAVID Functional Annotation Tool [44, 45].

Further *in silico* evaluation of SNPs and candidate genes

It is likely that the prognostic SNPs identified in this study are merely linkage disequilibrium proxies for other, functionally significant variants in their genomic vicinity. In an effort to identify the SNPs and genes with a direct functional impact on breast cancer survival, we utilized a number of public databases. For these analyses, regions of interest were defined as regions containing SNPs in linkage disequilibrium with the survival-associated SNPs at $r^2 > 0.1$. Candidate genes in the regions surrounding the prognostic SNPs, as well as statistically significant *trans*-eQTL genes associated with the survival-associated loci, were analyzed in the Kaplan-Meier plotter (<http://kmpplot.com/analysis/>), a gene expression and survival database currently consisting of 4142 breast cancer cases, of which 425 were known to have been treated with adjuvant chemotherapy [12]. These analyses were performed using 10-year relapse-free survival, as this was the only end point available for the majority of cases in the Kaplan-Meier plotter data set, and optimized break points for the binarization of gene expression levels. All SNPs in these regions were further analyzed for their impact on regulatory features using HaploReg, a database of genomic functional annotations [15].

ACKNOWLEDGEMENTS

This study would not have been possible without the contributions of the following: Kirsimari Aaltonen, Karl von Smitten, Irja Erkkilä (HEBCS and HEBCS-GWS); Nikki Graham (University of Southampton DNA bank) and the staff of the Southampton CRUK Centre Tissue Bank (POSH); the GARNET Coordinating Center (U01 HG005157) and the National Center for Biotechnology Information (SUCCESS-A); Maggie Angelakos, Judi Maskiell, Gillian Dite (ABCFS); Sten Cornelissen, Richard van Hien, Linde Braaf, Frans Hogervorst, Senno

Verhoef, Laura van 't Veer, Emiel Rutgers, C Ellen van der Schoot, Femke Atsma, Annegien Broeks (ABCS); Eileen Williams, Elaine Ryder-Mills, Kara Sargus (BBCS); Eija Myöhänen, Helena Kemiläinen (KBCP); Heather Thorne, Eveline Niedermayr, all the kConFab research nurses and staff, the heads and staff of the Family Cancer Clinics, and the Clinical Follow Up Study, and the many families who contribute to kConFab (kConFab/AOCS); Gilian Peuteman, Dominiek Smeets, Thomas Van Brussel, Kathleen Corthouts (LMBC); Judith Heinz, Nadia Obi, Alina Vrieling, Sabine Behrens, Ursula Eilber, Muhabbet Celik, Til Olchers and Stefan Nickels (MARIE); Teresa Selander, Nayana Weerasooriya (OFBCR); Louise Brinton, Mark Sherman, Neonila Szeszenia-Dabrowska, Beata Peplonska, Witold Zatonski, Pei Chao, Michael Stagner (PBCS); Petra Bos, Jannet Blom, Ellen Crepin, Elisabeth Huijskens, Annette Heemskerk, the Erasmus MC Family Cancer Clinic (RBCS); The Swedish Medical Research Counsel (SASBAC); the SEARCH and EPIC teams (SEARCH); Kyriaki Michailidou, Manjeet K. Bolla, Qin Wang (BCAC); Joe Dennis, Alison M. Dunning, Andrew Lee, and Ed Dicks, Craig Luccarini and the staff of the Centre for Genetic Epidemiology Laboratory, Javier Benitez, Anna Gonzalez-Neira and the staff of the CNIO genotyping unit, Jacques Simard and Daniel C. Tessier, Francois Bacot, Daniel Vincent, Sylvie LaBoissière and Frederic Robidoux and the staff of the McGill University and Génome Québec Innovation Centre, Stig E. Bojesen, Sune F. Nielsen, Borge G. Nordestgaard, and the staff of the Copenhagen DNA laboratory, and Julie M. Cunningham, Sharon A. Windebank, Christopher A. Hilker, Jeffrey Meyer and the staff of Mayo Clinic Genotyping Core Facility, and all the study participants, clinicians, family doctors, researchers, and technicians who have contributed to these studies.

FUNDING

- The HEBCS and HEBCS-GWS was financially supported by the Helsinki University Hospital Research Fund, Academy of Finland (266528), the Finnish Cancer Society, The Nordic Cancer Union and the Sigrid Juselius Foundation.
- Funding for the POSH study cohort was provided by Cancer Research UK (grant refs A7572, A11699, C22524).
- Funding support for the Genome-wide association study in breast cancer patients from the prospectively randomized SUCCESS-A trial was provided through the NHGRI Genomics and Randomized Trials Network [GARNET] (U01 HG005152). Funding support for genotyping, which was performed at the Center for Inherited Disease Research (CIDR) at Johns Hopkins University, was provided by the NIH Genes, Environment and Health Initiative [GEI] (U01 HG005137).
- Funding for the iCOGS infrastructure came

from: the European Community's Seventh Framework Programme under grant agreement n° 223175 (HEALTH-F2-2009-223175) (COGS), Cancer Research UK (C1287/A10118, C1287/A 10710, C12292/A11174, C1281/A12014, C5047/A8384, C5047/A15007, C5047/A10692), the National Institutes of Health (CA128978) and Post-Cancer GWAS initiative (1U19 CA148537, 1U19 CA148065 and 1U19 CA148112 - the GAME-ON initiative), the Department of Defence (W81XWH-10-1-0341), the Canadian Institutes of Health Research (CIHR) for the CIHR Team in Familial Risks of Breast Cancer, Komen Foundation for the Cure, the Breast Cancer Research Foundation, and the Ovarian Cancer Research Fund.

- The Australian Breast Cancer Family Study (ABCFS) was supported by grant UM1 CA164920 from the National Cancer Institute (USA). The content of this manuscript does not necessarily reflect the views or policies of the National Cancer Institute or any of the collaborating centers in the Breast Cancer Family Registry (BCFR), nor does mention of trade names, commercial products, or organizations imply endorsement by the USA Government or the BCFR. The ABCFS was also supported by the National Health and Medical Research Council of Australia, the New South Wales Cancer Council, the Victorian Health Promotion Foundation (Australia) and the Victorian Breast Cancer Research Consortium. J.L.H. is a National Health and Medical Research Council (NHMRC) Australia Fellow and a Victorian Breast Cancer Research Consortium Group Leader. M.C.S. is a NHMRC Senior Research Fellow and a Victorian Breast Cancer Research Consortium Group Leader.

- The ABCS study was supported by the Dutch Cancer Society [grants NKI 2007-3839; 2009 4363]; BBMRI-NL, which is a Research Infrastructure financed by the Dutch government (NWO 184.021.007); and the Dutch National Genomics Initiative.

- The BBCS is funded by Cancer Research UK and Breakthrough Breast Cancer and acknowledges NHS funding to the NIHR Biomedical Research Centre, and the National Cancer Research Network (NCRN).

- Financial support for KARBAC was provided through the regional agreement on medical training and clinical research (ALF) between Stockholm County Council and Karolinska Institutet, the Swedish Cancer Society, The Gustav V Jubilee foundation and Bert von Kantzows foundation.

- The KBCP was financially supported by the special Government Funding (EVO) of Kuopio University Hospital grants, Cancer Fund of North Savo, the Finnish Cancer Organizations, and by the strategic funding of the University of Eastern Finland

- kConFab is supported by a grant from the National Breast Cancer Foundation, and previously by the National Health and Medical Research Council (NHMRC), the Queensland Cancer Fund, the Cancer Councils of New

South Wales, Victoria, Tasmania and South Australia, and the Cancer Foundation of Western Australia.

- LMBC is supported by the 'Stichting tegen Kanker' (232-2008 and 196-2010). Diether Lambrechts is supported by the FWO and the KULPFV/10/016-SymBioSysII.

- The MARIE study was supported by the Deutsche Krebshilfe e.V. [70-2892-BR I, 106332, 108253, 108419], the Hamburg Cancer Society, the German Cancer Research Center and the Federal Ministry of Education and Research (BMBF) Germany [01KH0402].

- The MCBCS was supported by the NIH grants CA128978, CA116167, CA176785 an NIH Specialized Program of Research Excellence (SPORE) in Breast Cancer [CA116201], and the Breast Cancer Research Foundation and a generous gift from the David F. and Margaret T. Grohne Family Foundation and the Ting Tsung and Wei Fong Chao Foundation

- The Ontario Familial Breast Cancer Registry (OFBCR) was supported by grant UM1 CA164920 from the National Cancer Institute (USA). The content of this manuscript does not necessarily reflect the views or policies of the National Cancer Institute or any of the collaborating centers in the Breast Cancer Family Registry (BCFR), nor does mention of trade names, commercial products, or organizations imply endorsement by the USA Government or the BCFR.

- The PBCS was funded by Intramural Research Funds of the National Cancer Institute, Department of Health and Human Services, USA.

- The RBCS was funded by the Dutch Cancer Society (DDHK 2004-3124, DDHK 2009-4318).

- The SASBAC study was supported by funding from the Agency for Science, Technology and Research of Singapore (A*STAR), the US National Institute of Health (NIH) and the Susan G. Komen Breast Cancer Foundation.

- SEARCH is funded by a programme grant from Cancer Research UK [C490/A10124] and supported by the UK National Institute for Health Research Biomedical Research Centre at the University of Cambridge.

- SKKDKFZS is supported by the DKFZ.

REFERENCES

1. Peto J, Mack TM. High constant incidence in twins and other relatives of women with breast cancer. *Nature genetics*. 2000; 26: 411-414.
2. Michailidou K, Hall P, Gonzalez-Neira A, Ghoussaini M, Dennis J, Milne RL, Schmidt MK, Chang-Claude J, Bojesen SE, Bolla MK, Wang Q, Dicks E, Lee A, et al. Large-scale genotyping identifies 41 new loci associated with breast cancer risk. *Nature genetics*. 2013; 45: 353-61.
3. Mavaddat N, Antoniou AC, Easton DF, Garcia-Closas M. Genetic susceptibility to breast cancer. *Molecular oncology*. 2010; 4: 174-191.
4. Goldhirsch A, Glick JH, Gelber RD, Coates AS, Senn HJ. Meeting highlights: International Consensus Panel on the Treatment of Primary Breast Cancer. Seventh International Conference on Adjuvant Therapy of Primary Breast Cancer. *Journal of clinical oncology*. 2001; 19: 3817-3827.
5. Pritchard KI, Shepherd LE, O'Malley FP, Andrulis IL, Tu D, Bramwell VH, Levine MN, National Cancer Institute of Canada Clinical Trials Group. HER2 and responsiveness of breast cancer to adjuvant chemotherapy. *The New England journal of medicine*. 2006; 354: 2103-2111.
6. Tommiska J, Eerola H, Heinonen M, Salonen L, Kaare M, Tallila J, Ristimaki A, von Smitten K, Aittomaki K, Heikkila P, Blomqvist C, Nevanlinna H. Breast cancer patients with p53 Pro72 homozygous genotype have a poorer survival. *Clinical cancer research*. 2005; 11: 5098-5103.
7. Fagerholm R, Hofstetter B, Tommiska J, Aaltonen K, Vrtel R, Syrjakoski K, Kallioniemi A, Kilpivaara O, Mannermaa A, Kosma VM, Uusitupa M, Eskelinen M, Kataja V, et al. NAD(P)H:quinone oxidoreductase 1 NQO1*2 genotype (P187S) is a strong prognostic and predictive factor in breast cancer. *Nature genetics*. 2008; 40: 844-853.
8. Schmidt MK, Tommiska J, Broeks A, van Leeuwen FE, Van't Veer LJ, Pharoah PD, Easton DF, Shah M, Humphreys M, Dork T, Reincke SA, Fagerholm R, Blomqvist C, et al. Combined effects of single nucleotide polymorphisms TP53 R72P and MDM2 SNP309, and p53 expression on survival of breast cancer patients. *Breast cancer research*. 2009; 11: R89.
9. Seibold P, Hall P, Schoof N, Nevanlinna H, Heikkinen T, Benner A, Liu J, Schmezer P, Popanda O, Flesch-Janys D, Chang-Claude J. Polymorphisms in oxidative stress-related genes and mortality in breast cancer patients--potential differential effects by radiotherapy? *Breast*. 2013; 22: 817-823.
10. Jamshidi M, Schmidt MK, Dork T, Garcia-Closas M, Heikkinen T, Cornelissen S, van den Broek AJ, Schurmann P, Meyer A, Park-Simon TW, Figueroa J, Sherman M, Lissowska J, et al. Germline variation in TP53 regulatory network genes associates with breast cancer survival and treatment outcome. *International journal of cancer*. 2013; 132: 2044-2055.
11. Copson E, Eccles B, Maishman T, Gerty S, Stanton L, Cutress RI, Altman DG, Durcan L, Simmonds P, Lawrence G, Jones L, Bliss J, Eccles D, et al. Prospective observational study of breast cancer treatment outcomes for UK women aged 18-40 years at diagnosis: the POSH study. *Journal of the National Cancer Institute*. 2013; 105: 978-988.
12. Cancer Genome Atlas Network. Comprehensive molecular portraits of human breast tumours. *Nature*. 2012; 490: 61-70.
13. Curtis C, Shah SP, Chin SF, Turashvili G, Rueda OM, Dunning MJ, Speed D, Lynch AG, Samarajiwa S, Yuan Y, Graf S, Ha G, Haffari G, et al. The genomic and

- transcriptomic architecture of 2,000 breast tumours reveals novel subgroups. *Nature*. 2012; 486: 346-352.
14. Gyorffy B, Lanczky A, Eklund AC, Denkert C, Budczies J, Li Q, Szallasi Z. An online survival analysis tool to rapidly assess the effect of 22,277 genes on breast cancer prognosis using microarray data of 1,809 patients. *Breast cancer research and treatment*. 2010; 123: 725-731.
 15. Fogel BL, Wexler E, Wahnich A, Friedrich T, Vijayendran C, Gao F, Parikshak N, Konopka G, Geschwind DH. RBFox1 regulates both splicing and transcriptional networks in human neuronal development. *Human molecular genetics*. 2012; 21: 4171-4186.
 16. Sanders DA, Ross-Innes CS, Beraldi D, Carroll JS, Balasubramanian S. Genome-wide mapping of FOXM1 binding reveals co-binding with estrogen receptor alpha in breast cancer cells. *Genome biology*. 2013; 14: R6.
 17. Ward LD, Kellis M. HaploReg: a resource for exploring chromatin states, conservation, and regulatory motif alterations within sets of genetically linked variants. *Nucleic acids research*. 2012; 40: D930-4.
 18. Auweter SD, Fasan R, Reymond L, Underwood JG, Black DL, Pitsch S, Allain FH. Molecular basis of RNA recognition by the human alternative splicing factor Fox-1. *The EMBO journal*. 2006; 25: 163-173.
 19. Tada M, Kanai F, Tanaka Y, Sanada M, Nannya Y, Tateishi K, Ohta M, Asaoka Y, Seto M, Imazeki F, Yoshida H, Ogawa S, Yokosuka O, et al. Prognostic significance of genetic alterations detected by high-density single nucleotide polymorphism array in gastric cancer. *Cancer science*. 2010; 101: 1261-1269.
 20. Klorin G, Rozenblum E, Glebov O, Walker RL, Park Y, Meltzer PS, Kirsch IR, Kaye FJ, Roschke AV. Integrated high-resolution array CGH and SKY analysis of homozygous deletions and other genomic alterations present in malignant mesothelioma cell lines. *Cancer genetics*. 2013; 206: 191-205.
 21. Andersen CL, Lamy P, Thorsen K, Kjeldsen E, Wikman F, Villesen P, Oster B, Laurberg S, Orntoft TF. Frequent genomic loss at chr16p13.2 is associated with poor prognosis in colorectal cancer. *International journal of cancer*. 2011; 129: 1848-1858.
 22. Huang YT, Heist RS, Chirieac LR, Lin X, Skaug V, Zienolddiny S, Haugen A, Wu MC, Wang Z, Su L, Asomaning K, Christiani DC. Genome-wide analysis of survival in early-stage non-small-cell lung cancer. *Journal of clinical oncology*. 2009; 27: 2660-2667.
 23. Sun H, Wang Y, Wang Z, Meng J, Qi Z, Yang G. Aurora-A controls cancer cell radio- and chemoresistance via ATM/Chk2-mediated DNA repair networks. *Biochimica et biophysica acta*. 2014; 1843: 934-944.
 24. Niu N, Schaid DJ, Abo RP, Kalari K, Fridley BL, Feng Q, Jenkins G, Batzler A, Brisbin AG, Cunningham JM, Li L, Sun Z, Yang P, et al. Genetic association with overall survival of taxane-treated lung cancer patients - a genome-wide association study in human lymphoblastoid cell lines followed by a clinical association study. *BMC cancer*. 2012; 12: 422.
 25. De S, Cipriano R, Jackson MW, Stark GR. Overexpression of kinesins mediates docetaxel resistance in breast cancer cells. *Cancer research*. 2009; 69: 8035-8042.
 26. Meijers-Heijboer H, van den Ouweland A, Klijn J, Wasielewski M, de Snoo A, Oldenburg R, Hollestelle A, Houben M, Crepin E, van Veghel-Plandsoen M, Elstrodt F, van Duijn C, Bartels C, et al. Low-penetrance susceptibility to breast cancer due to CHEK2(*)1100delC in noncarriers of BRCA1 or BRCA2 mutations. *Nature genetics*. 2002; 31: 55-59.
 27. Vahteristo P, Bartkova J, Eerola H, Syrjakoski K, Ojala S, Kilpivaara O, Tamminen A, Kononen J, Aittomaki K, Heikkila P, Holli K, Blomqvist C, Bartek J, et al. A CHEK2 genetic variant contributing to a substantial fraction of familial breast cancer. *Am J Hum Genet*. 2002; 71: 432-8.
 28. Ellis NA, Groden J, Ye TZ, Straughen J, Lennon DJ, Ciocci S, Proytcheva M, German J. The Bloom's syndrome gene product is homologous to RecQ helicases. *Cell*. 1995; 83: 655-666.
 29. Jha K, Shukla M, Pandey M. Survivin expression and targeting in breast cancer. *Surgical oncology*. 2012; 21: 125-131.
 30. Zhou J, Wang Y, Wang Y, Yin X, He Y, Chen L, Wang W, Liu T, Di W. FOXM1 modulates cisplatin sensitivity by regulating EXO1 in ovarian cancer. *PloS one*. 2014; 9: e96989.
 31. Laganieri J, Deblois G, Lefebvre C, Bataille AR, Robert F, Giguere V. From the Cover: Location analysis of estrogen receptor alpha target promoters reveals that FOXA1 defines a domain of the estrogen response. *Proceedings of the National Academy of Sciences of the United States of America*. 2005; 102: 11651-11656.
 32. Williamson EA, Wolf I, O'Kelly J, Bose S, Tanosaki S, Koeffler HP. BRCA1 and FOXA1 proteins coregulate the expression of the cell cycle-dependent kinase inhibitor p27(Kip1). *Oncogene*. 2006; 25: 1391-1399.
 33. Syrjakoski K, Vahteristo P, Eerola H, Tamminen A, Kivinummi K, Sarantaus L, Holli K, Blomqvist C, Kallioniemi OP, Kainu T, Nevanlinna H. Population-based study of BRCA1 and BRCA2 mutations in 1035 unselected Finnish breast cancer patients. *Journal of the National Cancer Institute*. 2000; 92: 1529-1531.
 34. Kilpivaara O, Bartkova J, Eerola H, Syrjakoski K, Vahteristo P, Lukas J, Blomqvist C, Holli K, Heikkila P, Sauter G, Kallioniemi OP, Bartek J, Nevanlinna H. Correlation of CHEK2 protein expression and c.1100delC mutation status with tumor characteristics among unselected breast cancer patients. *Int J Cancer*. 2005; 113: 575-80.
 35. Eerola H, Blomqvist C, Pukkala E, Pyrhonen S, Nevanlinna H. Familial breast cancer in southern Finland: how prevalent are breast cancer families and can we trust the

family history reported by patients? *European journal of cancer*. 2000; 36: 1143-1148.

36. Li J, Humphreys K, Heikkinen T, Aittomaki K, Blomqvist C, Pharoah PD, Dunning AM, Ahmed S, Hooning MJ, Martens JW, van den Ouweland AM, Alfredsson L, Palotie A, et al. A combined analysis of genome-wide association studies in breast cancer. *Breast cancer research and treatment*. 2011; 126: 717-727.
37. Owzar K, Li Z, Cox N, Jung SH. Power and sample size calculations for SNP association studies with censored time-to-event outcomes. *Genetic epidemiology*. 2012; 36: 538-548.
38. Eccles D, Gerty S, Simmonds P, Hammond V, Ennis S, Altman DG, POSH steering group. Prospective study of Outcomes in Sporadic versus Hereditary breast cancer (POSH): study protocol. *BMC cancer*. 2007; 7: 160.
39. Rafiq S, Tapper W, Collins A, Khan S, Politopoulos I, Gerty S, Blomqvist C, Couch FJ, Nevanlinna H, Liu J, Eccles D. Identification of inherited genetic variations influencing prognosis in early-onset breast cancer. *Cancer research*. 2013; 73: 1883-1891.
40. Mailman MD, Feolo M, Jin Y, Kimura M, Tryka K, Bagoutdinov R, Hao L, Kiang A, Paschall J, Phan L, Popova N, Pretel S, Ziyabari L, et al. The NCBI dbGaP database of genotypes and phenotypes. *Nature genetics*. 2007; 39: 1181-1186.
41. Bhattacharya S, Fyfe G, Gray RJ, Sargent DJ. Role of sensitivity analyses in assessing progression-free survival in late-stage oncology trials. *Journal of clinical oncology*. 2009; 27: 5958-5964.
42. Benjamini Y, Hochberg Y. Controlling the False Discovery Rate: A Practical and Powerful Approach to Multiple Testing. *Journal of the Royal Statistical Society*. 1995; 57: 239-300.
43. Shabalín AA. Matrix eQTL: ultra fast eQTL analysis via large matrix operations. *Bioinformatics*. 2012; 28: 1353-1358.
44. Huang da W, Sherman BT, Lempicki RA. Systematic and integrative analysis of large gene lists using DAVID bioinformatics resources. *Nature protocols*. 2009; 4: 44-57.
45. Huang da W, Sherman BT, Lempicki RA. Bioinformatics enrichment tools: paths toward the comprehensive functional analysis of large gene lists. *Nucleic acids research*. 2009; 37: 1-13.