



Minerva Access is the Institutional Repository of The University of Melbourne

Author/s:

Wilde, M;Constantin, L;Thorne, PR;Montgomery, JM;Scott, EK;Cheyne, JE

Title:

Auditory processing in rodent models of autism: a systematic review

Date:

2022-12-01

Citation:

Wilde, M., Constantin, L., Thorne, P. R., Montgomery, J. M., Scott, E. K. & Cheyne, J. E. (2022). Auditory processing in rodent models of autism: a systematic review. *Journal of Neurodevelopmental Disorders*, 14 (1), <https://doi.org/10.1186/s11689-022-09458-6>.

Persistent Link:

<https://hdl.handle.net/11343/335486>

License:

CC BY

REVIEW

Open Access



Auditory processing in rodent models of autism: a systematic review

Maya Wilde¹ , Lena Constantin¹ , Peter R. Thorne^{2,3} , Johanna M. Montgomery² , Ethan K. Scott^{1,4} and Juliette E. Cheyne^{2*}

Abstract

Autism is a complex condition with many traits, including differences in auditory sensitivity. Studies in human autism are plagued by the difficulty of controlling for aetiology, whereas studies in individual rodent models cannot represent the full spectrum of human autism. This systematic review compares results in auditory studies across a wide range of established rodent models of autism to mimic the wide range of aetiologies in the human population. A search was conducted in the PubMed and Web of Science databases to find primary research articles in mouse or rat models of autism which investigate central auditory processing. A total of 88 studies were included. These used non-invasive measures of auditory function, such as auditory brainstem response recordings, cortical event-related potentials, electroencephalography, and behavioural tests, which are translatable to human studies. They also included invasive measures, such as electrophysiology and histology, which shed insight on the origins of the phenotypes found in the non-invasive studies. The most consistent results across these studies were increased latency of the N1 peak of event-related potentials, decreased power and coherence of gamma activity in the auditory cortex, and increased auditory startle responses to high sound levels. Invasive studies indicated loss of subcortical inhibitory neurons, hyperactivity in the lateral superior olive and auditory thalamus, and reduced specificity of responses in the auditory cortex. This review compares the auditory phenotypes across rodent models and highlights those that mimic findings in human studies, providing a framework and avenues for future studies to inform understanding of the auditory system in autism.

Keywords: Autism spectrum disorder, Auditory, Rodent models, Auditory brainstem recordings, Cortical event-related potentials

Introduction

Background

Autism, or autism spectrum disorders (ASD), refers to a wide range of developmental conditions that affect at least one in every 100 people worldwide [66]. As well as complex and heterogenous traits, the aetiology of autism comprises a combination of hundreds of genetic and environmental factors, with many likely still unknown [46, 63, 134]. The

primary diagnostic symptoms of ASD are difficulties with social interaction and verbal communication, and repetitive behaviours, which may include restricted interests [22]. While differences in sensory perception have long been recognised by the autism community, sensory sensitivity was not added to the diagnostic criteria until 2013, and research into this facet of autism has greatly increased in recent years [3, 112]. The vast majority of people with autism present with hypersensitivity or (less commonly) hyposensitivity of sensory modalities such as hearing, vision, and touch [19, 76, 129, 139]. Difficulty and delays

*Correspondence: j.cheyne@auckland.ac.nz

² Department of Physiology, Faculty of Medical and Health Sciences, Centre for Brain Research, University of Auckland, Auckland, New Zealand
Full list of author information is available at the end of the article



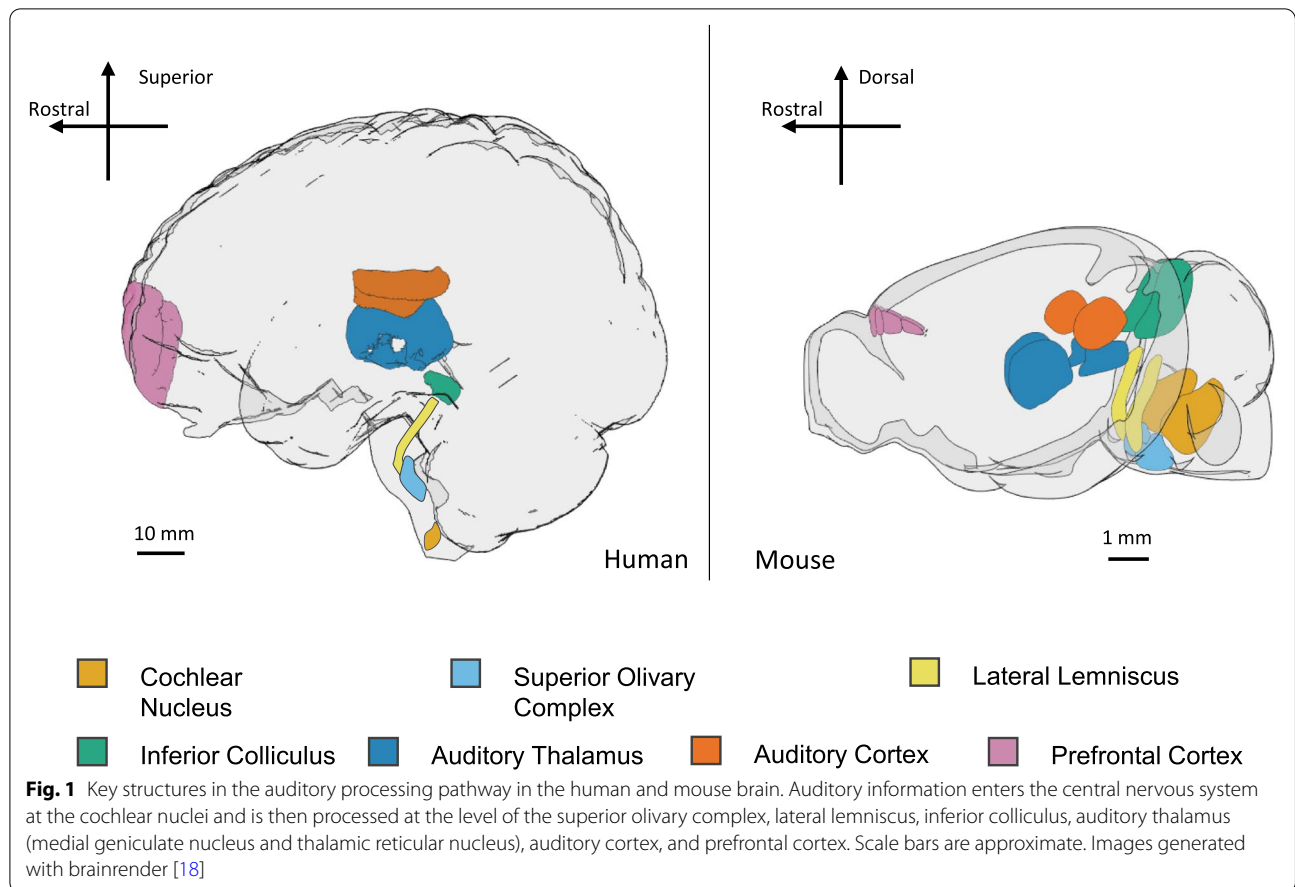
© The Author(s) 2022. **Open Access** This article is licensed under a Creative Commons Attribution 4.0 International License, which permits use, sharing, adaptation, distribution and reproduction in any medium or format, as long as you give appropriate credit to the original author(s) and the source, provide a link to the Creative Commons licence, and indicate if changes were made. The images or other third party material in this article are included in the article's Creative Commons licence, unless indicated otherwise in a credit line to the material. If material is not included in the article's Creative Commons licence and your intended use is not permitted by statutory regulation or exceeds the permitted use, you will need to obtain permission directly from the copyright holder. To view a copy of this licence, visit <http://creativecommons.org/licenses/by/4.0/>. The Creative Commons Public Domain Dedication waiver (<http://creativecommons.org/publicdomain/zero/1.0/>) applies to the data made available in this article, unless otherwise stated in a credit line to the data.

with spoken language are also common and may result either from differences in attention or auditory processing [26, 76, 112, 139]. These phenotypes may arise from higher structures, such as the auditory and prefrontal cortices, or subcortical structures that pass along heightened auditory responses to the cortex [77].

Measures of activity in the human auditory system, such as electroencephalography (EEG), magnetoencephalography (MEG), functional magnetic resonance imaging (fMRI), and auditory evoked responses (including auditory brainstem responses (ABRs) and cortical event-related potentials (ERPs)) have provided some level of understanding of the underlying bases of auditory phenotypes in autism (reviewed by [76]). These are all non-invasive methods of recording brain activity, with limited spatial resolution: they measure average activity in a brain region and cannot give information about cellular-level activity. Rodent studies have the benefit of pairing these non-invasive methods with cellular techniques including electrophysiology and histology, for more spatially precise understanding of structural and functional relationships in the auditory system. Studies of auditory processing in humans with autism often provide conflicting results in whether differences in auditory processing exist between cohorts of people with and without autism, and the direction and magnitude of those differences [131, 144]. These conflicts may arise from the difficulty of controlling for autism aetiology in human studies: autism arises from a wide range of genetic and non-genetic factors, and different aetiologies do not necessarily share the same phenotype [131, 137]. This, in turn, can dictate the intensity of autistic traits in a person or in an animal model, including auditory processing. Some studies control for aetiology by recruiting only those with a syndromic form of autism, such as fragile X syndrome (FXS) or Rett syndrome, rather than idiopathic ASD (iASD) [137]. In rodent studies, the aetiology is determined by the experimental model, and it is, therefore, important to compare across a range of models to form an impression of iASD as a whole. This review aims to characterise the function of structures along the ascending auditory pathway in a wide range of rodent models of ASD by comparing results from histology, ABR, electrophysiology, EEG, fMRI, and behavioural tests. Comparing across these models will enable us to compare auditory phenotypes between different genetic and environmental factors in highly controlled groups, which is not possible in human populations. Conclusions from these comparisons will aid understanding of how auditory information is processed differently in autism compared to in typical development.

Anatomy of the ascending auditory processing pathway

The key structures in the ascending auditory pathway are largely conserved between humans and rodents, though naturally at different scales (Fig. 1). The cochlear nuclei are the first structures in the central auditory pathway, receiving input from the cochlea via the cochlear nerve. The cochlear nuclei consist of the dorsal cochlear nucleus (DCN) and the ventral cochlear nucleus (VCN). The latter can be further divided into the anterior VCN (AVCN) and posterior VCN (PVCN), based on these two areas containing different cell types [51]. After the cochlear nuclei, an important feature of this pathway is its bilaterality: information is passed both ipsilaterally and contralaterally along the pathway for comparison of features of the sound inputs to the left and right ears. The VCN projects mostly ipsilaterally to the superior olivary complex (SOC). Key structures in the SOC are the medial superior olive (MSO), lateral superior olive (LSO), medial nucleus of the trapezoid body (MNTB), lateral nucleus of the trapezoid (LNTB), and the superior paraolivary nucleus (SPON) [51, 72]. The MSO and LSO receive excitatory input from the VCN and inhibitory input from the MNTB. The LNTB also provides inhibitory input to the MSO. The lateral lemniscus (LL) comprises a dorsal and ventral nucleus (DNLL and VNLL) and relays information from the cochlear nuclei and the SOC onward to the inferior colliculus (IC) [98]. The central nucleus of the inferior colliculus (CNIC) receives direct excitatory input from the ipsilateral DCN, as well as the contralateral VCN and CNIC, and inhibitory input from the VNLL and the LSO. It then passes excitatory input along to the medial geniculate nucleus (MGN) of the thalamus. The two major auditory structures of the thalamus are the MGN and the thalamic reticular nucleus (TRN). These integrate auditory information from the CNIC and pass it on to the cortex [9]. The primary location for the processing of auditory stimuli once signals reach the cortex is the auditory cortex, which is composed of several distinct areas but most notably the primary auditory cortex (A1). In rodents, other fields include the secondary auditory cortex (A2) and anterior auditory field (AAF). In primates, the auditory fields include the core (primary), belt (secondary), and parabelt (tertiary) [120]. The prefrontal cortex (PFC) is then involved in interpreting auditory information and producing appropriate responses to complex sounds. As auditory information is passed through this pathway, information such as rapidness, location, frequency, and intensity of sound is relayed through spatial and temporal properties of these structures. For example, neurons in structures along the rodent auditory processing pathway typically show frequency tuning: a preference in their responses for a specific 'characteristic frequency',



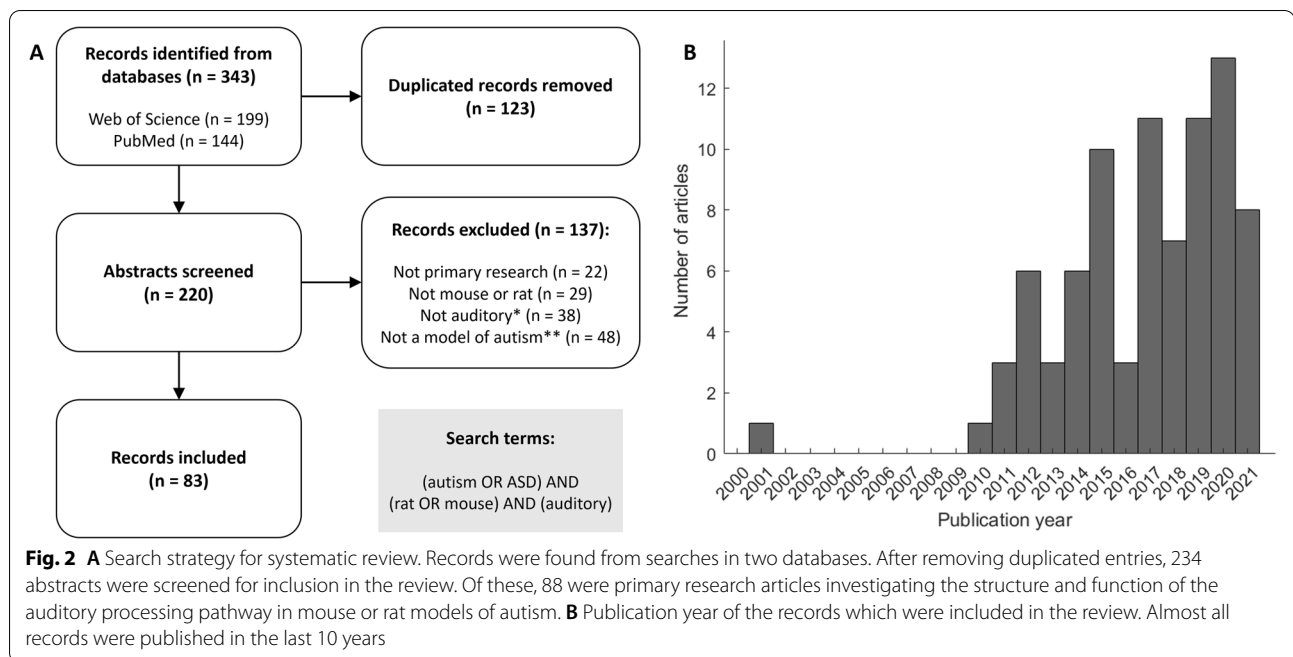
with much weaker responses the further removed a sound is from that frequency [56]. Tonotopic arrangement of neurons within these structures generally places those which preferentially respond to low-frequency sounds at one end of the structure and those which preferentially respond to high-frequency sounds at the opposite end, although there can be some variation in this across species [12, 120]. While the scale of these structures, the hearing range, and the capacity for higher-order functions (such as understanding spoken language) are not conserved between rodents and humans, basic properties such as frequency specificity and transmission of activity between the auditory structures are sufficiently well conserved between human and rodent brains to warrant comparisons between findings in rodent models and human cohorts [125].

Rodent models of autism

A wide range of genetic and teratogenic factors involved in autism have been identified, though these still do not account for all individuals with autism [25, 46, 63]. There are now over 200 rodent models bearing genetic mutations in genes that have been identified as having variants in people

with autism, and over 40 produced by maternal exposure to teratogens [1, 10, 34]. It is worth noting, however, that the same genetic variant may produce variable effects in people with autism and that many people likely develop autism as a result of interactions between multiple genetic variants and/or non-genetic factors [134]. Given that rodent models are typically focused on a single mutation or teratogenic exposure, they do not necessarily model human autism accurately [22]. For this reason, autism research often focuses on endophenotypes (measures of activity that underlie broader behavioural phenotypes) that may arise similarly from different genetic backgrounds [54]. As such, identifying endophenotypes in rodent models with a single genetic mutation or teratogenic exposure may be generalisable to humans exhibiting similar endophenotypes even though the human aetiology may be more complex [43, 83].

Rodent models of autism are typically validated by assessing social, repetitive, and anxiety behaviours that may have similarities to humans. However, a direct comparison to the clinical diagnosis of autism is not straightforward, as this is a more complex process. Relevant to this review, sensory phenotypes are now more likely to be included in the autism assessment in humans and thus



recent studies have called for their inclusion in the validation of rodent models [125, 128]. Proxies in rodent studies, for sensory experiences that would be measured by questionnaire in humans, include behavioural responses and recordings of evoked neural activity, which can indicate hypersensitivity or hyposensitivity [125].

Rodent models of autism include those with mutations in genes encoding a range of different proteins [1]. Some of these, such as *Fmr1* and *Mecp2*, are associated with their own syndromes (FXS and Rett syndrome, respectively), which have high co-occurrence with autism and are therefore included as models of ASD [103, 137]. Unsurprisingly, given the neurodevelopmental nature of autism, many of these genes have especially important roles during the development of the nervous system. Some cellular functions fulfilled by proteins encoded by autism-associated genes include intracellular Ca^{2+} signalling, synaptic transmission, and chromatin remodelling [100, 134]. Furthermore, several of these proteins are ‘master regulators’ of genetic expression: through their roles interacting with DNA, RNA, or proteins, they directly affect the expression or function of other autism-related genes and proteins [100]. Mutations affecting the function of these proteins therefore have more widespread effects across a group of genes which can also independently have mutations that link to autism. Other genetic rodent models incorporate microdeletions: segments of chromosome containing several genes which are deleted in order to model similar deletions found in people with autism [23, 39, 57].

Non-genetic rodent autism models use teratogens such as valproic acid (VPA), thalidomide, and lipopolysaccharide (LPS) to produce an autism-like phenotype [4, 38, 53]. These teratogens have been found to increase the likelihood of autism in children when present prenatally, and rodent models may receive the drug either once or multiple times during gestation, or even postnatally to mimic the later stages of human pregnancy [25, 131].

This review focuses on auditory phenotypes in autism and draws together recent studies that have described auditory function in rodent models of ASD. Some models, such as *Fmr1* and VPA, have been used in a high number of studies compared with other models (Supplementary Table 2). This is likely due to their robust phenotypes in other areas of ASD research and conclusive status as an aetiology of autism in humans. However, over recent years, there has been an increase in publications which study auditory function in a wider range of models (Fig. 2B). It is particularly important that models outside of *Fmr1* be investigated in auditory studies, as human studies have found that people with FXS often have different auditory phenotypes to those with iASD [131]. By assessing the function of the auditory system across many studies in different ASD models, a more detailed understanding of changes in the auditory network can be achieved.

In summary, the purpose of this systematic review is to bring together findings in the central auditory function of many rodent models of autism, in order to find common auditory endophenotypes. Additionally, we aim to

summarise the results of invasive studies in these models, which may provide explanations for the underpinnings of these endophenotypes. By comparing across these models, we aim to identify which results are common between autism models and which are specific to certain aetiologies. By comparing similarities and differences between models with controlled aetiologies, we hope to shed light on the often-conflicting results of human studies, which usually comprise a cohort of people with mixed or unknown aetiologies (with the exception of syndromic studies).

Methods for the systematic review

This systematic review was conducted in accordance with the PRISMA guidelines [94]. Searches for primary research articles were conducted using two databases: Web of Science (Clarivate) and PubMed (Elsevier), on the 2nd of May, 2022. In both search engines, the search keywords were ('autism' OR 'ASD') AND ('rat' OR 'mouse') AND ('auditory'). These two searches yielded a total of 362 results, 128 of which were either duplicated within a search or between the two search engines (Fig. 2A). There were no entries that were inaccessible or not in English. The remaining 234 unique abstracts were screened for inclusion as primary research articles in this review. Abstracts were included in the final list according to four criteria: primary research articles, experiments were performed in either mice or rats, focus included central auditory processing, and that an appropriate model of autism was examined. Entries including reviews and conference abstracts and those studying humans or other animals and not mice or rats were excluded. Entries were included if the study investigated structure or function in the ascending central auditory processing pathway. Paradigms such as auditory fear conditioning and ultrasonic vocalisations were excluded as they are designed to test fear learning and communication, rather than auditory function. A study which only investigated peripheral hearing in a mouse model of autism was also not included [16]. Careful consideration was paid to inclusion of studies on the basis of whether the model in question represented a robust model of autism. For example, in the case of genetic models, studies were included if the gene in question is included on the SFARI gene website as category 1 (high confidence), 2 (strong candidate), or 3 (suggestive evidence). Models were included whether they were full knockouts of the gene, heterozygous knockouts, or conditional knockouts specifically in certain cell types or for limited periods. In the case of *Mecp2*, both over- and under-expression of the gene are associated with autism, and models of both were included. Models with chromosomal microdeletions were also included if they have several reports listed in the SFARI gene database

[1]. Autism-related genes affected by these deletions can be found in Supplementary Table 2. For teratogenic models, these were included if they were listed in the SFARI induced model database with strong human clinical evidence associated. A full list of the 88 included primary research articles can be found in Supplementary Table 1. Altogether 36 genes, microdeletions and teratogens are modelled across these articles (Supplementary Table 2). Multiple models were used in some studies, and in these cases, only the findings from the models which fit the inclusion criteria were included. Our search does not include articles which assess auditory function in models of syndromes such as FXS or Rett syndrome if they did not also identify their model as linked to autism. Our search may also have missed articles which did not use 'auditory' as a keyword, though 'auditory' was used to find studies of central rather than peripheral processing (such as may have been found by the keyword 'hearing').

The findings of these 88 studies relevant to central auditory processing are divided below into non-invasive measures with human counterparts which are candidates for auditory endophenotypes and invasive measures which may explain the cellular origins of these endophenotypes.

Results

The models referred to in this review encompass a range of mouse and rat strains. Unfortunately, some of the studies included use models on a background of the C57BL/6 mouse strain, which is known to be associated with a peripheral, progressive high-frequency sensorineural hearing loss from 3 months of age, and is even used as a model of early onset hearing loss [95]. Auditory experiments conducted in these animals therefore have an underlying caveat affecting wild type (WT) hearing, which may make it difficult to parse out differences in audition caused by the autism model versus those resulting from the strain's genetic background. There were 17 studies that used this mouse strain (above 3 months of age) and this is noted throughout this 'Results' section, as well as in Supplementary Table 1.

Non-invasive measures of auditory function

Auditory brainstem responses

Auditory brainstem response (ABR) recordings are non-invasive measures used clinically by audiologists to assess the transmission of information through the subcortical auditory pathways and intensity thresholds for responses to sound [51]. Equivalent recordings to those in humans of all ages can also be made in rodents, where they are often used to measure auditory function, particularly auditory thresholds (sensitivity). The output trace has several peaks, which correspond to the activity in

subsequent brain regions along the auditory pathway in response to a sound stimulus (Fig. 3A). In children with autism, the most common findings from ABR recordings are increased latencies, especially of peaks III and V (representing delayed activation of the SOC and IC), although this effect is reduced or even reversed in adulthood [82, 99, 126]. Findings of changes to the amplitude of ABR peaks (which would correspond to more or less activity in the relevant brain area) in autism are much less conclusive [99, 126]. Results of ABR studies in rodent models of ASD are summarised in Table 1. The majority of studies show no difference in ABR thresholds compared to WTs, although half of these studies were conducted in C57BL/6 mice over 3 months old [37, 64, 71, 89, 124, 152]. However, *Fmr1*^{-/-} and *Adnp*^{+/-} mice have higher thresholds than WTs, indicating less sensitivity to quieter sounds [50, 116]. A study in 16p11.2 microdeletion mice also used ABRs to test hearing thresholds, but found no responses and concluded that this mutation caused deafness in these mice [151].

Changes in the amplitude or latency of the ABR peaks in autism models would indicate changes in the intensity

or delay of the response in certain auditory structures. However, studies of the amplitude and latency of ABR peaks in autism models are sparse and have inconclusive results (Table 1). Most studies show no difference to WTs, and in several cases where there are differences at young ages, these shift to resemble WTs in older animals [71, 116, 124]. Differences in ABR latencies are also most evident in humans at young ages, and it has been recommended that rodent studies examine a range of ages in order to capture such developmental changes between juveniles and adults [128]. Most studies using ABRs have found few and varied differences between WTs and ASD model animals, and there are few coherent patterns across studies within and across rodent models. As appealing as ABRs are as a non-invasive measure of function in lower auditory structures, too few studies have performed this test on rodent models of ASD to draw conclusions across different models. ABR measures in children with autism show trends towards lower amplitudes and longer latencies, but there is a significant variation in the response [74, 76, 136]. The inability of rodent studies in various models to converge on a consistent

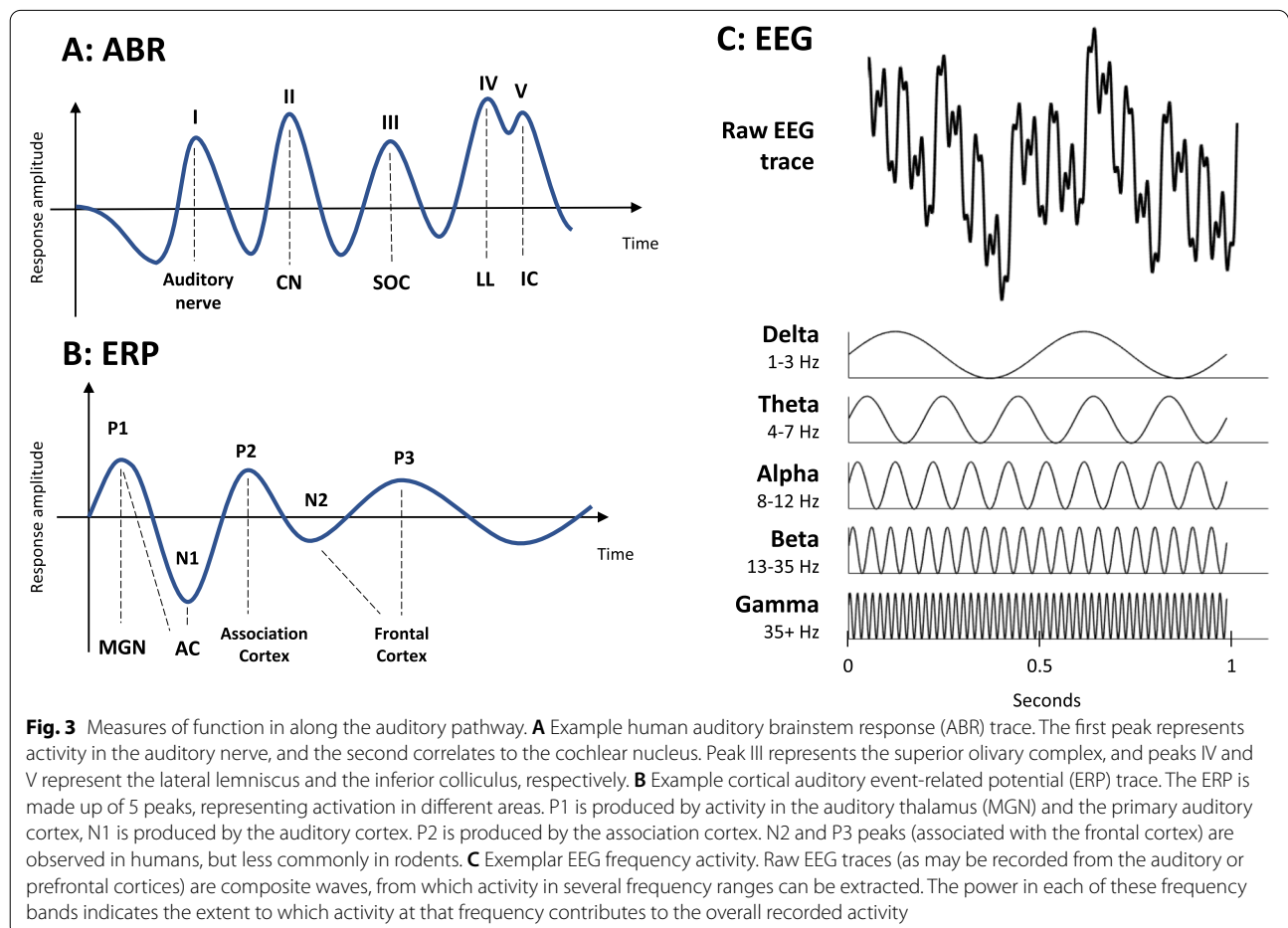


Table 1 Auditory brainstem responses in rodent models of ASD. Model names are written in bold if the result represents more than one study, or the majority of studies in the case where results from a single model are mixed. Numbers in subscript brackets refer to the relevant papers from the literature search, as numbered in Supplementary Table 1. Models are listed in alphabetical order

Measure	Models increased compared to WT	Models unchanged compared to WT	Models decreased compared to WT
ABR threshold	<i>Adnp</i> ₍₂₈₎ , <i>Fmr1</i> ₍₆₇₎	<i>Chrna7</i> ₍₁₈₎ , <i>Cntnap2</i> ₍₇₀₎ , <i>Drd2</i> ₍₄₂₎ , <i>Mecp2</i> _(35, 86) , <i>Wnt1</i> ₍₅₂₎	<i>Wnt1</i> ₍₅₂₎
Peak I Amplitude		<i>Cntnap2</i> _(70, 71) , <i>Drd2</i> ₍₄₂₎	
Peak II Amplitude	<i>Cntnap2</i> ₍₇₀₎	<i>Drd2</i> ₍₄₂₎ , <i>Fmr1</i> ₍₆₇₎	
Peak III Amplitude	<i>Cntnap2</i> ₍₇₀₎ , <i>Fmr1</i> ₍₆₇₎	<i>Cntnap2</i> _(70, 71) , <i>Drd2</i> ₍₄₂₎	
Peak IV Amplitude	<i>Cntnap2</i> ₍₇₀₎	<i>Cntnap2</i> _(70, 71)	
Peak I Latency		<i>Cntnap2</i> _(70, 71) , <i>Drd2</i> ₍₄₂₎	
Peak II Latency		<i>Drd2</i> ₍₄₂₎ , <i>Fmr1</i> ₍₆₇₎	
Peak III Latency	<i>Cntnap2</i> ₍₇₀₎	<i>Drd2</i> ₍₄₂₎ , <i>Mecp2</i> ₍₈₆₎	
Peak IV Latency		<i>Cntnap2</i> ₍₇₁₎	<i>Cntnap2</i> ₍₇₀₎

ABR phenotype may therefore be an accurate portrayal of the diversity of ABRs in iASD with a range of aetiologies.

Cortical event-related potentials

EEG is a useful non-invasive tool for measuring cortical activity in humans, both at rest and in response to stimuli. In rodents, EEG generally uses implanted electrodes, and typically just one to three sites, though more recent studies have used up to 30 channels [55]. These methods can be used to measure the cortical auditory event potentials that follow ABRs in response to sound stimuli (Fig. 3B). As the included studies refer to these waveforms simply as auditory event-related potentials (ERPs), that term will be used in this review. These ERPs have a distinct shape, including well-defined positive peaks (P1, P2, and P3) and negative peaks (N1 and N2), which are associated with different aspects of sound processing [131, 148]. The P1 is produced by a combination of activity in the auditory thalamus and the primary auditory cortex, the N1 by the auditory cortex, and the P2 by the association cortex [59, 83, 148]. The N2 and P3 peaks (associated with the frontal cortex) represent higher-order activity and are observed in humans, but appeared in very few of the studies included in this review. The N1 peak has been shown to be reduced in amplitude in people with autism, but increased in amplitude in those with FXS [35, 83, 107, 131]. These changes represent reduced evoked activity in the auditory cortex in iASD, but stronger activity in the auditory cortex in FXS. The N1 amplitude is therefore a prime example in which auditory phenotype is certainly not generalisable across aetiologies. In Rett syndrome, the amplitude of N1, P2, and N2 may be decreased, and latencies across most peaks tend to be increased [119, 136]. In people with iASD, the most consistent difference in the ERP profile is increased

latency of the N1 peak, indicating slower transmission of information to the auditory cortex [43, 105]. It is known that ERPs change with age in humans and rodents, notably that the N1 and P2 amplitudes are lower, and P1 and N1 latencies are increased in children and young mice compared to adults [131]. The reduced N1 amplitude and increased N1 latency seen in people with autism may therefore represent delayed maturation of auditory circuits.

A summary of analyses of auditory event-related potentials in rodent models of ASD is shown in Table 2. In cases where more than one study examined the same model, the most common result is indicated by bold font. It should be noted that a subset of these studies measured ERPs in anaesthetised animals [28, 30, 32, 60, 70, 123]. Anaesthesia has been shown to disrupt auditory and other sensory event-related potentials [5, 114]. Results in Table 2 which come solely from studies in anaesthetised animals are therefore indicated with an asterisk. It is noted that these studies are largely in rats: only two *Fmr1*^{-/-} mouse studies used anaesthesia, and the results from these merged with those from awake *Fmr1*^{-/-} mice. The majority of studies used white noise as a stimulus, though some used recorded human speech sounds or pure tones [28–30, 32, 60]. Human studies typically use simple stimuli such as pure tones, but it has been suggested that more complex sound stimuli can be informative and should also be used in rodent studies for translational validity [83, 125]. Furthermore, most studies do not compare a range of stimulus presentation rates to generate average ERP traces. One study that did so found the habituation rate of the N1 amplitude was lower in *Fmr1*^{-/-} mice, but only at presentation rates greater than one stimulus per second [70]. This difference in

Table 2 Auditory event-related potentials in rodent models of ASD. Entries are in bold if they are supported by more than one study or represent the result of the majority of the studies using that model (if there is no majority, no result is in bold). Numbers in subscript brackets refer to the relevant papers from the literature search, as numbered in Supplementary Table 1. Asterisks indicate cases where all of the studies contributing to that result were conducted in anaesthetised animals. Models are listed in alphabetical order

Measure	Models increased compared to WT	Models unchanged compared to WT	Models decreased compared to WT
P1 amplitude	<i>Fmr1</i> ₍₃₀₎	<i>Fmr1</i> _(32, 37, 73, 83) , <i>Mecp2</i> _(26, 35) , <i>NR1</i> ₍₆₉₎	15q13.3 ₍₃₁₎
N1 amplitude	<i>Cntnap2</i> [*] ₍₇₁₎ , <i>Fmr1</i> _(30, 32, 37, 83) , <i>Mecp2</i> _(16, 26, 35) , <i>MGluR5</i> ₍₄₎ , <i>VPA</i> [*] ₍₁₃₎	15q13.3 ₍₃₁₎ , <i>Fmr1</i> _(37, 83) , <i>NR1</i> ₍₆₉₎ , <i>Pcdh10</i> ₍₅₉₎	<i>Ehmt1</i> ₍₉₎ , <i>Fmr1</i> [*] ₍₁₄₎ , <i>VPA</i> [*] ₍₁₃₎
P2 amplitude	<i>Cntnap2</i> [*] ₍₇₁₎ , <i>Fmr1</i> ₍₃₀₎ , <i>Mecp2</i> ₍₂₆₎	<i>Fmr1</i> _(30, 32, 37, 83) , <i>Mecp2</i> _(26, 35)	<i>Fmr1</i> [*] ₍₁₄₎ , <i>Mecp2</i> [*] ₍₁₆₎ , <i>MGluR5</i> ₍₄₎ , <i>VPA</i> [*] ₍₁₃₎
P1 latency	<i>Fmr1</i> ₍₃₇₎ , <i>Mecp2</i> ₍₂₆₎	<i>Fmr1</i> _(30, 32, 83) , <i>Mecp2</i> _(26, 35) , <i>NR1</i> ₍₆₉₎	
N1 latency	<i>Cntnap2</i> [*] ₍₇₁₎ , <i>Fmr1</i> _(37, 83) , <i>Mecp2</i> _(16, 26) , <i>NR1</i> _(22, 69) , <i>VPA</i> ₍₂₃₎	<i>Fmr1</i> _(30, 32, 37, 40, 83) , <i>Mecp2</i> ₍₃₅₎ , <i>Pcdh10</i> ₍₅₉₎	
P2 latency	<i>Cntnap2</i> [*] ₍₇₁₎ , <i>Fmr1</i> ₍₃₀₎ , <i>Mecp2</i> _(16, 26, 35)	<i>Mecp2</i> ₍₂₆₎ , <i>Fmr1</i> _(30, 37, 83)	

habituation could lead to detection of differences in N1 amplitude in the mean trace.

P1 Many studies with *Fmr1*^{-/-} mice have found no difference in the amplitude of the P1 peak, though a recent study using a higher number of channels found an increased P1 in *Fmr1*^{-/-} mice compared to WTs [55, 60, 67, 130, 147]. The P1 amplitude is generally not different to WTs in other ASD models, with the exception of 15q13.3 deletion mice [48, 57, 64, 121].

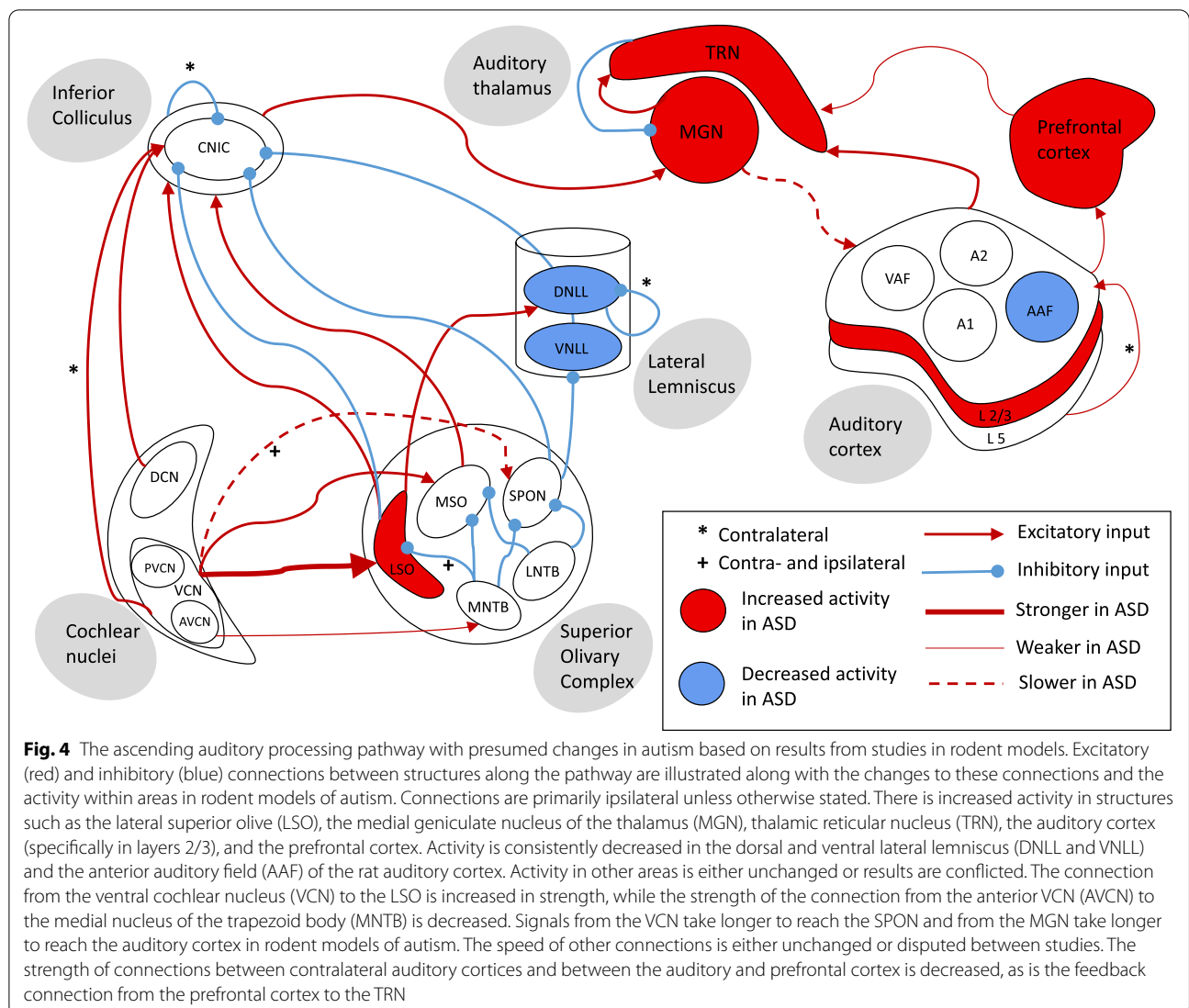
N1 In *Fmr1*^{-/-} mice, the amplitude of N1 is usually increased compared to WTs, more commonly when measured from the frontal rather than the auditory cortex [55, 60, 67, 70, 130, 147]. However, N1 amplitude is decreased across the auditory cortex in anaesthetised *Fmr1*^{-/-} rats [30]. The increase seen in the mice resembles the auditory endophenotype of people with FXS. The amplitude of the N1 peak in other models is variously increased, decreased, or unchanged [8, 20, 28, 32, 48, 57, 64, 106, 121, 123]. Some of the increased and unchanged N1 amplitude results [8, 57, 64, 106] come from studies in C57BL/6 mice over 3 months old, which may impede their ability to accurately portray an auditory endophenotype. Nevertheless, it appears that the consistently reduced N1 amplitude in people with iASD and Rett syndrome is not well recapitulated across a wide range of rodent models.

P2 Mixed results are also visible in the amplitude of the P2 peak, with awake mice again mostly showing increased or unchanged amplitudes [48, 55, 60, 64, 67, 147]. Anaesthetised rats and *mGluR5*^{-/-} interneuron mice on a C57BL/6 background have decreased P2 amplitudes, with the exception of *Cntnap2*^{-/-} rats [8, 28, 30, 31, 123]. N2 and P3 amplitudes are not included in Table 2 as few studies reported them, but they were found to be decreased in

anaesthetised rat *Fmr1*^{-/-} and *Mecp2*^{+/-} models, similarly to P2 [30, 32].

Whether latencies of ERP peaks differ from WTs in autism rodent models varies between studies. When differences are observed, they take the form of extended latencies in the ASD models, indicating slower transmission of auditory information [32, 42, 43, 48, 55, 60, 64, 67, 70, 106, 121, 147]. For several models, N1 latency is consistently increased (Table 2), which is very promising as it reflects one of the most consistent ERP endophenotypes in iASD [43, 105]. Note the N1 latency is less often increased in *Fmr1*^{-/-} animals, and increased N1 latency is not generally observed in people with FXS [131]. This result is represented in Fig. 4 as decreased speed of transmission from the auditory thalamus to the auditory cortex in iASD. In some studies that measured ERPs across several ages, differences in ERP peak latencies were not apparent in mice under 2 months old, but increased compared to WT at 2–3 months of age [48, 147]. This may represent a developmental phenotype that arises due to delayed maturation of the auditory circuit (i.e. the ASD models maintain an ‘immature’ ERP).

It has been proposed that ERPs could serve as a biomarker for differences in auditory processing in autism [83, 119]. In particular for people with iASD and Rett syndrome, the decreased amplitude and increased latency of various peaks, but especially the N1, seem to be the most consistent feature [119, 131, 136]. Across the studies included in this review, increased N1 latency appears to be recapitulated well in iASD and *Mecp2* rodent models, but decreased amplitude of N1 is poorly conserved. In people with FXS, the most consistent ERP phenotype is increased amplitude of the N1 [107]. This appears to be well recapitulated in *Fmr1* mouse models. Altogether, ERPs remain a promising cross-species



auditory endophenotype, though further work is needed for robust recapitulation of the decreased N1 amplitude.

EEG power spectrum

Ongoing activity from EEG recordings can be separated out into activity occurring at different frequencies (Fig. 3C). Activity in each of these ranges correlates to connectivity across different parts of the brain: slower waves (e.g. delta) are produced by longer-range connections, and faster waves (e.g. gamma) are produced by activity within a cortical area [83]. This activity can be measured in auditory and frontal cortices, both at rest and following sound stimuli. In people with autism, there is evidence for a u-shaped change in resting frequency power, with an increase in the power at lower frequencies

(delta and theta), decrease in middle frequencies (alpha), and increase at the highest frequencies (beta and gamma) of cortical activity [144]. However, following auditory stimulation, there is unchanged or even decreased evoked gamma power in ASD [43, 104, 105]. In Rett syndrome, the u-shape in resting EEG also appears to be present, only without the increase in gamma activity [113]. People with FXS show increased gamma power both at rest and evoked by sound stimuli, although in some instances the relative increase at baseline limits the ability to further increase in response to sound [35, 36, 107, 122]. A more consistent gamma activity EEG phenotype in people with ASD and FXS appears to be a decrease in inter-trial coherence (ITC) of gamma frequency activity, which represents disruption to local functional connectivity within the auditory cortex [35, 36, 43, 83, 103–105, 107]. It has

been argued, however, that ITC values may not be as informative as they seem [142].

A summary of EEG activity in mouse models of autism is presented in Table 3. The most consistent results across studies are in the gamma frequency range. Resting gamma power is increased across a range of models in repeated studies [44, 48, 55, 67–69, 101, 102, 130, 147]. The few studies which showed no change in resting gamma power were all conducted in C57BL/6 mice over 3 months of age [8, 57, 106]. This matches the human endophenotype for increased resting gamma activity in the auditory cortex of people with autism and FXS, though this finding in *Mecp2* animals was surprising given the lack of resting gamma differences in children with Rett syndrome [36, 113, 144]. Evoked gamma power is almost always increased in *Fmr1*^{-/-} mice and decreased in all other ASD models [20, 43, 44, 48, 57, 67–69, 106, 147]. The few studies that diverge from this trend were in *mGluR5*^{-/-} interneuron and *Mecp2*^{+/-} mice on a C57BL/6 background [8, 49, 64]. Again, this strongly matches the divergent endophenotypes of FXS and iASD in humans. ITC of gamma activity is decreased in the auditory and frontal cortices of many ASD models [20, 42, 43, 48, 55, 57, 68, 101, 102]. Fewer studies found increased or unchanged gamma ITC, and most of these were in C57BL/6 mice over 3 months old [49, 64, 106]. This is another promising replication of one of the more consistent EEG phenotypes in both FXS and iASD.

Because of the specific interest in gamma activity in the auditory system in autism, fewer studies have investigated activity in other frequency bands. The results across these studies do not show consistent differences from WTs in resting or evoked activity [8, 20, 48, 49,

55, 64, 67–69, 101, 102, 106]. Unfortunately, there is no increase in delta and decrease in alpha which, together with the increased gamma, would have reflected the u-shaped pattern seen in people with autism and Rett syndrome [113, 144].

The most consistent phenotypes in EEG power spectra in ASD and FXS relate to resting and evoked gamma power and ITC of gamma activity. Clearly, the attention that gamma activity has raised in human studies has affected the priorities of rodent studies: while several report null results or increase for other frequency ranges, many leave them out altogether. Resting gamma power is consistently increased across rodent models, which matches the human endophenotype. Evoked gamma activity appears to be increased in *Fmr1* models, but decreased across most other rodent models, which also fits with what has been found in humans. ITC of gamma activity is also decreased in most rodent studies, which is consistent with both ASD and FXS. Gamma activity is associated with intra-regional connectivity, so the gamma frequency data reflect the internal connectivity within the auditory cortex and frontal cortex: increased at rest, decreased in response to sound (though increased in FXS), and with reduced intracortical synchrony.

Functional magnetic resonance imaging

Functional magnetic resonance imaging (fMRI) gives information on the activation of brain regions based on changes in blood flow to those areas, and connectivity of these areas is inferred by their co-activation. Auditory activity in people with autism as measured by fMRI has had mixed results: in some cases, activity in the auditory cortex has a sustained duration, and in others, it is only

Table 3 Summary of EEG activity power in different frequency spectra. Entries are in bold font in cases where a result is represented by more than one study in a model or represents the majority of the studies in that model. Numbers in subscript brackets refer to the relevant papers from the literature search, as numbered in Supplementary Table 1. Models are listed in alphabetical order

Measure	Models increased compared to WT	Models unchanged compared to WT	Models decreased compared to WT
Resting delta	Fmr1 _(30, 37, 38)	<i>Fmr1</i> _(30, 39, 58)	
Resting theta	<i>Fmr1</i> _(30, 38)	<i>Fmr1</i> _(30, 39, 58) , <i>MGLuR5</i> ₍₄₎	
Resting alpha	<i>Fmr1</i> _(30, 57)	Fmr1 _(30, 38, 39, 58) , <i>MGLuR5</i> ₍₄₎ , <i>Pcdh10</i> ₍₅₉₎	
Resting beta	<i>Fmr1</i> _(30, 38)	<i>Fmr1</i> _(39, 58) , <i>MGLuR5</i> ₍₄₎ , <i>Pcdh10</i> ₍₅₉₎	
Resting gamma	Fmr1 _(30, 37, 38, 39, 57, 58, 73, 83) , <i>Mecp2</i> ₍₂₆₎ , <i>NR1</i> ₍₂₄₎	15q13.3 ₍₃₁₎ , <i>MGLuR5</i> ₍₄₎ , <i>Pcdh10</i> ₍₅₉₎	
Evoked delta	<i>Fmr1</i> ₍₃₈₎	<i>Fmr1</i> ₍₃₉₎ , <i>Mecp2</i> ₍₃₅₎	Mecp2 _(26, 27)
Evoked theta	<i>Fmr1</i> ₍₃₉₎ , <i>MGLuR5</i> ₍₄₎	<i>Fmr1</i> , <i>Mecp2</i> ₍₃₅₎	<i>Fmr1</i> ₍₃₈₎ , Mecp2 _(26, 27)
Evoked alpha		<i>MGLuR5</i> ₍₄₎	<i>Ehmt1</i> ₍₉₎ , Mecp2 _(26, 27)
Evoked beta	<i>Fmr1</i> ₍₃₉₎ , Mecp2 _(27, 35)	<i>Fmr1</i> , <i>Mecp2</i> , <i>MGLuR5</i> ₍₄₎	<i>Ehmt1</i> ₍₉₎ , <i>Fmr1</i> ₍₃₈₎ , <i>Mecp2</i> ₍₂₆₎
Evoked gamma	Fmr1 _(37, 38, 39, 83) , Mecp2 _(27, 35) , <i>MGLuR5</i> ₍₄₎	<i>Fmr1</i> ₍₈₃₎	15q13.3 ₍₃₁₎ , <i>Ehmt1</i> ₍₉₎ , <i>Fmr1</i> ₍₈₃₎ , <i>Mecp2</i> ₍₂₆₎ , <i>NR1</i> ₍₂₄₎ , <i>Pcdh10</i> ₍₅₉₎ , <i>VPA</i> ₍₂₃₎
Inter-trial gamma	<i>Fmr1</i> ₍₃₈₎ , Mecp2 _(27, 35)	<i>Fmr1</i> ₍₃₉₎ , <i>Pcdh10</i> ₍₅₉₎	15q13.3 ₍₃₁₎ , <i>Ehmt1</i> ₍₉₎ , Fmr1 _(30, 38, 57, 58) , <i>Mecp2</i> ₍₂₆₎ , <i>NR1</i> ₍₂₄₎ , <i>VPA</i> ₍₂₃₎

decreased compared to non-autistic people in response to speech sounds rather than simple tones [47, 81]. In *Syn2^{-/-}*, *En2^{-/-}*, and *Nf1^{-/-}* mice, the resting connectivity between the auditory cortex and the frontal cortex is decreased, and so is the connectivity within the auditory cortex and between contralateral auditory cortices, which is also observed in children with *Nf1*-associated ASD [14, 80, 127]. However, in *Chd8^{+/-}* mice, the resting connectivity is increased within and between auditory cortices and between the auditory cortex and subcortical structures [135]. Functional connectivity of the auditory cortex is also increased in 15q13.3 but not 22q11.2 or 1q21.1 microdeletion mice or *Iqsec2^{-/-}* mice [65, 108].

This is a relatively short list of studies, but fMRI shows promise as a non-invasive measure for investigating cortical connectivity at a coarser timescale but finer structural scale than EEG. More studies in humans which specifically target auditory connectivity are required to gauge whether the results in rodent models accurately recapitulate any fMRI endophenotypes, particularly with regard to different types of sound stimuli.

Behavioural responses

A range of tests are available to measure the behavioural output of the neural processing of auditory stimuli in rodents. One of the simplest tests is to measure the likelihood of an acoustic startle response (ASR) following auditory stimulation by measuring the degree by which the animal jumps or moves in response to the sound. The equivalent test in humans measures the degree of activity in the eyelid muscles with an electromyogram [52]. In *Fmr1^{-/-}* mice, there is a consistent pattern of increased ASR vigour compared to WTs at lower sound levels

(70–90 dB SPL), but decreased amplitude of the ASR at higher sound levels of 100–120 dB SPL [15, 79, 92, 93]. In humans with FXS, changes in ASR have not been observed to stimuli presented at 105 dB SPL [40, 52]. According to the rodent data, this null result in humans may be due to use of an intermediate stimulus level, and future studies should investigate a wider range of sound levels to establish whether a similar bimodal effect arises in humans. In other ASD models, the results are more varied (see summary in Table 4). A rule which would explain the majority of results in studies that investigated multiple sound levels would be as follows: similar response to WTs at lower intensities, but increased startle amplitudes at higher intensities [20, 38, 41, 42, 44, 71, 84, 85, 89, 124]. This would fit with observations of increased auditory startle to loud sound stimuli in people with autism [58]. However, contradictory studies show either increased or unchanged startle amplitudes at low intensities and no difference at higher intensities [8, 61, 109, 138] or decreased startle amplitude [39, 62, 111, 143]. It is worth noting that more than half of these contradictory studies [8, 39, 62, 109, 143] were conducted in C57/BL6 mice, which is not the case for any of the studies that fit the rule. Studies which present startle stimuli at a wide range of sound levels [84, 124] are most useful for understanding this phenotype: several of the studies included only tested 110–120 dB SPL as a sound level [15, 20, 21, 38, 93, 111, 138], which does not allow detection of increased startle at sub-maximal intensities. Indeed, studies of acoustic startle in humans have also shown somewhat conflicting results in whether startle amplitude is increased or unchanged, and these studies may also benefit from using a wider range of sound levels

Table 4 Summary of results from behavioural tests of auditory function in rodent models of autism. Entries are in bold font in cases where a result is represented by more than one study in a model or represents the majority of the studies in that model. Numbers in subscript brackets refer to the relevant papers from the literature search, as numbered in Supplementary Table 1. Models are listed in alphabetical order

Test	Models increased compared to WT	Models unchanged compared to WT	Models decreased compared to WT
Acoustic startle response (ASR) <100 dB SPL	<i>Fmr1</i> ₍₄₅₎ , <i>Wnt1</i> ₍₅₂₎	<i>Cb1</i> ₍₂₁₎ , <i>Chd8</i> ₍₃₃₎ , <i>Cntn4</i> ₍₄₈₎ , <i>Cntnap2</i> _(47,70) , <i>Drd2</i> ₍₄₂₎ , <i>Neph2</i> ₍₈₀₎ , <i>NR1</i> _(22,24) , <i>Wnt1</i> ₍₅₂₎	<i>Cacna2δ3</i> ₍₃₄₎
Acoustic startle response (ASR) >100 dB SPL	22q11.2 ₍₁₁₎ , <i>Cntnap2</i> _(47,70) , <i>Cntn4</i> ₍₄₈₎ , <i>Drd2</i> ₍₄₂₎ , <i>Ehmt1</i> ₍₉₎ , <i>LPS</i> ₍₁₉₎ , <i>NR1</i> _(22,24)	<i>Chd8</i> ₍₃₃₎ , <i>Drd2</i> ₍₄₂₎ , <i>MGLUR5</i> ₍₄₎ , <i>Nlgn3</i> ₍₇₆₎ , <i>TS2</i> ₍₆₂₎ , <i>VPA</i> ₍₁₀₎	15q13.3 ₍₂₀₎ , <i>Fmr1</i> _(7,55) , <i>Neph2</i> ₍₈₀₎ , <i>VPA</i> ₍₆₄₎
Pre-pulse inhibition (PPI)	<i>Cntnap2</i> ₍₇₇₎ , <i>Fmr1</i> _(7,55) , <i>MGLUR5</i> ₍₄₎ , <i>Ube3a</i> ₍₅₆₎	15q13.3 ₍₂₀₎ , <i>Drd2</i> ₍₄₂₎ , <i>Cntn4</i> ₍₄₈₎ , <i>Shank3b</i> ₍₆₃₎ , <i>Slo1</i> ₍₇₉₎ , <i>TS2</i> ₍₆₂₎ , <i>VPA</i> ₍₁₀₎	22q11.2 ₍₁₁₎ , <i>Cntnap2</i> _(47,70) , <i>Ehmt1</i> ₍₉₎ , <i>LPS</i> ₍₁₉₎ , <i>Nlgn3</i> ₍₇₆₎ , <i>NR1</i> _(22,24) , <i>VPA</i> ₍₆₄₎
Frequency distinction (embedded tone)	<i>Cntnap2</i> ₍₇₇₎ , <i>Shank3b</i> ₍₆₃₎ , <i>TS2</i> ₍₆₂₎	<i>Ptchd1</i> ₍₅₁₎ , <i>Ube3a</i> ₍₅₆₎	
Gap detection	<i>TS2</i> ₍₆₂₎	<i>Shank3b</i> ₍₆₃₎	<i>Cntnap2</i> ₍₇₇₎
Complex sound distinction		<i>Fmr1</i> ₍₁₄₎ , <i>Mecp2</i> ₍₁₆₎	<i>VPA</i> ₍₁₃₎
Task with background noise			<i>Mecp2</i> ₍₁₆₎ , <i>Ptchd1</i> ₍₅₁₎

[131]. Interestingly, some studies showed sex-related differences in ASR: in *Wnt1* and *Drd2* selective knockout mice, females have increased ASR but males are not different to WTs [71, 89], whereas in LPS-treated rats, males have increased ASR and females are unchanged from WT [38]. Sex differences are therefore another factor that should be investigated in future studies, alongside wider ranges of frequencies for startle stimuli.

More complex behavioural tasks include pre-pulse inhibition (PPI): using a quieter stimulus to cue the startle-inducing stimulus, which decreases the intensity of the startle response. The effect of the pre-pulse is consistently disrupted in people with FXS and sometimes disrupted in those with iASD [58, 78, 97, 131]. The greatest proportion of rodent models do show the expected decrease in PPI compared to WTs [20, 23, 38, 42, 44, 84, 111, 124, 138]. Interestingly, *Slo1*^{-/-} mice show no initial difference in PPI, but did not increase PPI with practice as observed in WTs [141]. However, several other models showed no difference in PPI [21, 39, 71, 85, 109, 110]. Still others showed an increased effect of the pre-pulse on inhibition of the startle response [8, 15, 93, 96, 140]. PPI tests therefore produce a wide range of results in different ASD models, but most commonly decreased PPI, similarly to human cohorts of iASD [58, 97]. There has been some criticism of analysis methods of PPI studies, specifically that using ANOVA statistical tests to compare PPI does not take habituation of the ASR into account, and can produce false positive results [21], and that variations in experimental setup may produce inconsistencies between research groups [125]. These may explain some of the discrepancies seen between these behavioural studies and should inform future studies for best practice on PPI paradigms. Furthermore, a study in which rats were trained in an operant conditioning paradigm with auditory cues found that the reaction time was faster in *Fmr1*^{-/-} than WT rats and that a longer stimulus did not improve reaction times in *Fmr1*^{-/-} as it did for WT rats [6]. This was interpreted by the authors as more rapid 'temporal integration of loudness' in the knockouts, and such a change could affect perception of the timing and loudness of the pre-pulse in a PPI paradigm, which could alter the extent of inhibition produced by the pre-pulse.

Expanding from the basic PPI framework, other paradigms can use the known rate of PPI to measure whether the pre-pulse stimulus is detectable or not. On an embedded tone task, in which a baseline background tone is presented with a tone which deviates from the baseline frequency acting as the pre-pulse, *Cntnap2*^{-/-} and *TS2-neo* mice showed greater attenuation of the startle response compared to WTs [109, 140]. However, *Shank3b*^{-/-} and *Ube3a*^{+/-} mice showed no difference [96, 110]. More precise tests investigate the animal's

ability to discriminate pitch by using pre-pulse tones that deviate from the baseline frequency by less than 100 Hz. In this test of pitch discrimination, *Shank3b*^{-/-} and *Cntnap2*^{-/-} mice showed improved performance compared to WTs, though *Ptchd1*^{-/-} and *TS2-neo* mice were not different to WTs [88, 109, 110, 140]. The pre-pulse can also take the form of a gap of silence in background white noise, and this has been used with mixed findings: *TS2-neo* mice performed better than WTs at detecting the gap, but only on the more difficult version of the test where the gap was much shorter [109]. Meanwhile, *Shank3b*^{-/-} mice showed no difference, and *Cntnap2*^{-/-} mice showed less attenuation compared to WTs [110, 140].

When VPA rats were trained to discriminate between human speech sounds, they performed worse than WTs at distinguishing consonants, but no different at distinguishing vowels [29]. However, other studies in *Fmr1*^{-/-} and *Mecp2*^{+/-} rats found no differences from WTs [30, 32]. It is difficult to make conclusions about these more complex tasks — embedded tone, gap detection, and speech sound distinction, since fewer studies have implemented them and the results do not show a clear trend. Investigations with complex sounds stand to provide different information about the auditory processing pathway in animal models of autism than those with simple sounds, so future studies are encouraged to include such stimuli.

A common trait in humans with autism is difficulty separating meaningful sounds from background noise [26, 139]. This is illustrated in several rodent studies: in *Mecp2*^{+/-} rats, the ability to distinguish human speech sounds is impaired compared to WTs in the first week of training (though recovers in the second and third weeks to WT levels), at a range of intensities of background noise [32]. In a behavioural task requiring mice to respond to one pure tone stimulus but not two control stimuli, *Ptchd1*^{-/-} mice performed equally well as WTs in the absence of background noise, but significantly worse than WTs in the presence of noise (Miho [88]). This is consistent with findings in humans with autism [26].

Behavioural studies of auditory function in rodent models of ASD highlight another difference between *Fmr1* models and other autism models. In *Fmr1*, ASR is increased at low sound levels but decreased at higher levels compared to WT, whereas in other models, ASR is unchanged at low levels but increased at higher levels. More complex behavioural tests of auditory function, such as PPI, unfortunately show inconclusive results. This variation may represent different auditory phenotypes for different aetiologies of autism, which are generally not possible to separate in studies of people with iASD

in which the aetiology is unknown. The few studies that have tested performance on auditory tasks in the presence of background noise showed that this was decreased in autism model rodents.

Invasive measures

The results from more invasive measures in the included studies provide information on the cellular functions underlying the non-invasive auditory phenotypes observed in the previous section. A presumptive model of the changes to the ascending auditory processing pathway in rodent models of autism based on these results is presented in Fig. 4. Supplementary Fig. 1 shows a complementary figure for analogous changes from human studies.

Histology

A major advantage of rodent studies is that histological studies can be made *ex vivo* in order to gain an understanding of the anatomy of auditory brain structures. Changes to the function of the auditory network can be inferred by staining for absolute number or proportion of different cell types within given regions. Additionally, immunostaining for the immediate early gene *c-Fos* or metabolic enzyme cytochrome oxidase (CO) in brain tissue immediately after auditory stimulation can give a proxy measure of activation of each neuron, as expression of *c-Fos* and activity of CO are upregulated following heightened neuronal activity [27, 149]. Changes to the volume of the auditory structures and the density of the neurons within them have been noted in rodent models of ASD: In the VCN, the overall number of neurons and number projecting to the CNIC and MGN is reduced in VPA-treated animals, and the number projecting to the MNTB is decreased in *Fmr1*^{-/-} rats [73, 118, 153, 154]. In *Fmr1*^{-/-} mice, VCN neurons fail to increase in size with age, leading to decreased size but not number of VCN neurons in adults [115, 116]. Despite these decreases, in both the VCN and the MNTB, the number of neurons shown to be active following 4-kHz or 16-kHz sound exposure was increased in VPA rats, and the typical tonotopic bands of the structure were less narrowly defined [24]. Other changes that have been observed in the MNTB include decreased overall volume in thalidomide rats, reduced number of neurons in thalidomide and VPA rats, and smaller, rounder neurons in *Fmr1*^{-/-} rats [53, 116, 118, 153]. Immunostaining for excitatory and inhibitory inputs to the MNTB indicated that there was increased inhibition compared to excitation in *Fmr1*^{-/-} mice, suggesting dampened activity of the MNTB [116]. This indicates reductions in neuronal numbers,

maturity, and innervation in the MNTB, a major supplier of inhibitory input in the SOC. The number of overall neurons is also decreased in the MSO and LSO in VPA rats, and the number of inhibitory neurons was decreased in the SPON of *Fmr1*^{-/-} rats [118, 153]. These results are similar to studies of human brains, which have found fewer and smaller neurons in the SOC of those with ASD, especially in the MSO, where the neurons were also rounder, consistent with an immature phenotype [74, 132]. The levels of neurotransmitters glutamate, GABA, and glutamine were not changed in the SOC of *Cntnap2*^{-/-} rats [84].

Cell counts in VPA rats showed significantly fewer neurons in the DNLL and VNLL. The DNLL in particular also had larger, less densely packed neurons in VPA rats than WTs [75]. VPA treatment decreased the number of neurons in the CNIC, as well as decreasing its overall size and neuronal packing density, while increasing the average size of neurons [75]. Despite the loss of neurons, the IC also showed an increased number of activated neurons and a blurring of the distinctive tonotopic bands, similarly to the VCN and MNTB in VPA rats [24]. Increased activation following broadband sound exposure as measured by *c-Fos* staining was also seen in the IC and MGN of *Fmr1*^{-/-} mice [91]. Coarse analysis of the IC of *Wnt1*^{dTg} mice, however, showed increased volume [89]. The number and size of neurons in the MGN of *Cntnap2*^{-/-} mice has been shown to be reduced [140]. Despite increased sound-evoked activity shown by *c-Fos* staining, CO staining showed reduced activity in the IC, LL, and MGN in the absence of sound stimulation in VPA rats [86].

In the auditory cortex, the levels of GABA but not glutamate were increased in *Pchd10*^{+/-} mice [106]. However, in VPA rats, there are fewer inhibitory interneurons in the auditory cortex, while excitatory neurons have increased dendritic spine density [17]. The increased spine density could lead to hyperexcitability of responses to the same concentration of glutamate, but increased GABA with fewer inhibitory neurons seems unlikely, so it is unclear whether the phenotypes of these two models overlap.

Overall, anatomic studies of rodent models of ASD seem to point to fewer, smaller, and less mature neurons in subcortical auditory structures, especially those that are primarily inhibitory. This reduction in inhibition in subcortical structures may represent the origin of increased activation in higher auditory structures, leading to auditory hypersensitivity and reduced preciseness of responses.

Electrophysiology

Recording electrical activity from populations of neurons by placing one or more electrodes into a brain region or recording activity from single neurons via whole cell patch-clamp provides readout of neuronal activity with high temporal resolution. Electrophysiological recordings can be made either in vivo in response to sounds or in acute tissue slices in response to electrical stimulation. A summary of the results of electrophysiological studies, as well as other functional studies, on the overall changes to the auditory pathway can be seen in Fig. 4. In the SOC, few differences have been found in electrical responses in the MNTB in *Tsc1*^{+/-}, *Nf1*^{+/-}, and *H-ras* mutant mice [145]. The rate of spontaneous activity and evoked activity and the frequency of miniature excitatory post-synaptic potentials (mEPSPs) were unchanged, though in the *Nf1*^{+/-} mice the latency to a response at the major relay site of the calyx of Held was decreased [145]. In the LSO of *Fmr1*^{-/-} mice, the evoked firing rate and mEPSP frequency are increased, and the frequency tuning of neurons in response to pure tones was broader, indicating hyperactivity and reduced specificity of neuronal responses [45]. In the SPON of *Chrna7*^{-/-} mice, the rate of spontaneous activity is not different from WTs, but the response latency following sound onset was increased, and the resulting activity lasted longer. The length required for a silent gap in a train of sound to be detected in recordings of SPON activity was increased in the *Chrna7*^{-/-} mice [37]. This evidence points to little change in the activity of the MNTB in ASD, but hyperactivity of the LSO and delayed responses in the SPON.

In the IC, frequency tuning was broader in *Fmr1*^{-/-} mice, especially for lower frequencies, but unchanged in *Chrna7*^{-/-} or *Cacna2d3*^{-/-} mice [11, 37, 91]. The spontaneous firing rate was increased in *Fmr1*^{-/-} and *Cacna2d3*^{-/-} mice, and evoked firing rates were increased in *Fmr1*^{-/-} mice [11, 91]. The latency to respond was increased in *Chrna7*^{-/-} mice, which carried through to the latency to respond in the VNLL [37]. Responses in the IC of *Cacna2d3*^{-/-} mice followed slower sound presentation rates (10–30 per second), but were poorly coupled to presentation of auditory stimuli at a faster rate of 100 per second [11]. In the auditory thalamus of *Ptchd1*^{-/-} mice, the spontaneous firing rate increased in the TRN but not the MGN. The evoked firing rate is increased in both the TRN and MGN, and the presence of background noise further increases the firing rate in the MGN and impairs the ability of MGN neurons to follow rapid sounds [88]. This fits with the behavioural phenotype of poorer performance on auditory tasks in the presence of background noise [32, 88].

Electrophysiological recordings from the auditory cortex are more prevalent than from lower auditory

structures. Results from these studies can vary, for example the spontaneous firing rate is decreased in *Shank3*^{+/-} and *Cntnap2*^{-/-} rat auditory cortex, but increased in *Fmr1*^{-/-} rat auditory cortex, and unchanged in ex vivo slice recordings from *Fmr1*^{-/-} mice [33, 123, 133, 146]. Another measure of hyperexcitability is an increased ratio of mEPSPs to miniature inhibitory post-synaptic potentials (mIPSPs). A higher frequency of mEPSPs than mIPSPs compared to WTs has been observed in A1 of VPA mice, *Ehmt1*^{+/-} mice and *Pten* conditional knockout mice, indicating underlying hypersensitivity of the AC [87, 90, 150]. The evoked firing rate is decreased in *Shank3*^{+/-} rats, VPA rats, and *Fmr1*^{-/-} rats, but increased in *Mecp2*^{+/-} and *Cntnap2*^{-/-} rats, *Fmr1*^{-/-} mice (particularly in layers 2/3), and *Mecp2* overexpressing mice [28, 30, 32, 33, 117, 123, 146, 152]. Interestingly, in vivo studies in VPA rats show no change in evoked firing rate to a simple 5-kHz tone, but decreased firing rates to human speech sounds, which fits with the patterns of evoked activity measured by fMRI in humans with autism [7, 28, 29, 47]. Mice with a conditional knockout of *Pten* after the auditory critical window displayed a decreased firing rate compared to WTs at low levels of stimulation, but increased at higher levels [150]. One study in *Fmr1*^{-/-} mice showed that the divergence from WTs in evoked activity changes with age, likely related to effects of the mutation on the timing of reversal of GABA receptor polarisation [133]. Differences in the level of activity in the auditory cortex in various models may therefore be affected by different excitability of lower auditory structures in each model, and by the stimulus intensity in ex vivo and complexity of the sound in in vivo experiments. Future studies of spontaneous and evoked activity should ideally compare these over a wide range of stimulus intensities and ages to better characterise AC development in their models.

The frequency tuning of A1 neurons in VPA rats, *Fmr1*^{-/-} mice, and *Mecp2* overexpressing mice, and the AAF of VPA rats, is broader, indicating reduced specificity of responses and hyperexcitability [4, 28, 117, 152]. Neurons in the auditory cortex of *Fmr1*^{-/-} mice also show less specificity for a preferred speed of frequency sweep stimulus [117]. The degree of cortical tonotopy, a measure of functional frequency response organisation, has been found to be reduced in VPA rat AAF and reduced or unchanged in VPA rat A1 [4, 28]. Beyond the amplitude of the response and the specificity of A1 neurons, the speed of transmission to the auditory cortex was also measured in several studies. The latency of responses is increased in A1 of *Mecp2*^{+/-} rats and *Mecp2* overexpressing mice, and in the AAF of VPA rats, though it is decreased in the A1 of VPA rats and not affected at all in *Shank3*^{-/-} rats [4, 28, 32, 33, 152].

Speed of transmission likely also leads to the inability of auditory cortex neurons to follow along with rapidly presented sounds in *Mecp2*^{+/-}, *Cntnap2*^{-/-}, and VPA rats [17, 32, 123]. This characteristic resembles the activity of A1 in younger WT rats, indicating this may represent an ‘immaturity’ of the auditory cortex in these animals [123]. VPA-treated rats also more poorly distinguish between different rates of sound stimulus presentation in behavioural tasks, which is likely linked to this electrophysiological finding [17]. Based on the results from the IC of *Cacna2d3*^{-/-} mice, this auditory cortex phenotype may arise subcortically [11].

Overall, while there are some conflicts between results in electrophysiological studies, there is convergent evidence for broader frequency tuning of neurons in several structures along the auditory processing pathway and increases in spontaneous and evoked firing rates of neurons in lower auditory structures, corresponding to hyper-excitation within these structures. Activity in the auditory cortex may change with age, which may explain some variability in results [56]. There is evidence that complex sounds are more likely to elicit differences from WTs than simple sounds and that ASD models have degraded temporal precision of responses, especially in the presence of background noise [7, 28, 32, 88]. These results fit well with equivalent measures of responses to simple and complex sounds, as well as sounds with background noise, in people with autism [26, 47, 139].

Conclusions

The recent expansion in the variety of rodent models of autism used in auditory studies provides a significantly richer framework for comparing endophenotypes among mice, rats, and humans and has provided more insight into how the auditory processing circuit develops and functions differently in ASD to produce these phenotypes. However, this large array of models presents a pool of results that are more complex and diverse than is the case in single-gene disorders. In the same way that human studies with a range of aetiologies present varying results in many auditory tests, comparing across an array of different rodent models here has frequently presented conflicting results. There are, however, some convergent auditory endophenotypes across the studies represented in this review, which match findings in humans. These include the increased latency of peaks in the ERP of ASD models (though the decreased amplitude of the N1 peak seen in human ASD was not well recapitulated) and increased amplitude of the N1 peak in *Fmr1* models, which matches the divergence in FXS from the typical human autism endophenotype. Likewise, the power of gamma activity in the auditory and frontal cortices is affected differently in FXS and iASD. Increased resting

gamma power in both *Fmr1* and other autism models and increased evoked gamma power in *Fmr1* models but decreased across other models match well with recordings from human studies. Decreased inter-trial coherence of gamma activity was also consistently reduced, which matches well with human endophenotypes. Based on the rodent studies summarised in this review, sound intensity-dependent changes to the ASR show promise as an endophenotype which may warrant more in-depth investigation in humans with autism and FXS, as this is evidently another auditory endophenotype which separates the two groups. More complex behavioural tasks show merit but are thus far inconclusive.

In the more invasive studies, the most consistent result from histology in rodent ASD models is a lack of maturation and sometimes number of neurons in various auditory structures, with inhibitory interneurons being the most affected. A common theme across electrophysiology studies is broader frequency tuning of neurons: responding to a wider range of frequencies and therefore showing less specificity to any given frequency of sound. Both findings point to hypersensitivity and dysregulation in the auditory system, which ties to the increased intensity of the ASR and decreased inter-trial coherence of gamma activity in the auditory cortex.

Interestingly, several studies spanning histology, electroencephalography, and electrophysiology noted phenotypes in rodent models of autism that were ‘immature’ or resembled that of a younger WT animal. Other studies found phenotypic differences were not present in older animals, suggesting that differences between the WTs and autism model animals may represent different developmental trajectories rather than finite differences. There is even more reason, therefore, to recommend testing animals at a wide range of ages.

To broadly summarise the effects of changes in the auditory system in ASD, there is increased excitation in subcortical structures and less precise tuning of neurons to specific frequencies. The connectivity within the auditory cortex is increased, but connectivity between the auditory cortex and other brain regions is decreased. The effect of these changes is increased perception of and ability to distinguish simple sounds, but reduced perception of complex sounds and sounds in the presence of background noise. Future studies should note the endophenotypes that have been shown to be the most successful in comparing auditory processing between humans and rodent models of ASD. These include the amplitude and latency of the N1 peak, power, and coherence of gamma activity in the auditory cortex at rest and evoked by sound, acoustic startle at high sound levels, and ability to distinguish sounds in the presence of background noise.

Limitations and future directions

One reason for the observed conflicting results may be due to differences in experimental conditions. Studies which used the same paradigms across different rodent models can claim more conclusively that differences in the results are truly due to differences in phenotypes between models [13, 28, 32, 145]. One way to improve replicability in this field may be to standardise experiments in order to make them more comparable between laboratories and different ASD models, in a manner similar to the International Brain Laboratory [2]. We have presented suggestions for improving auditory phenotyping, such as comparing a wider range of sound levels across specific developmental and ageing stages, and measuring cortical ERPs in awake, rather than anaesthetised animals. Other recommendations for standardisation have been made in two recent reviews regarding translational potential of rodent models of autism, including repeating our recommendation of comparisons across specific ranges of ages, particularly younger ones [125, 128]. While results from human studies should be used to gauge whether a rodent model accurately reflects relevant endophenotypes [83], results from these rodent models can also reveal new avenues to inform future directions of human studies. For example, we have highlighted that differences in the auditory startle are sound level-dependent in both *Fmr1* and iASD rodent models, and testing a range of sound intensities in human studies may provide a better understanding of differences in the ASR of the relevant human populations.

While *Fmr1* rodent models are well established and present attractive model organisms due to their relative genetic simplicity, researchers should use caution in using these models as a proxy for iASD in auditory studies. While the co-occurrence of FXS and autism is high, phenotypes such as increased evoked gamma power in the auditory cortex are very much FXS-specific, and well conserved in rodent models of FXS. For this reason, we have tried to compare across non-FXS models in this review to represent modelling of iASD auditory endophenotypes. Further, a concerning number of studies used mouse models on a C57BL/6 genetic background, which has a known phenotype of hearing loss after 3 months of age [95]. We have seen in this review that mouse autism models on this background over 3 months old often have auditory phenotypes that diverge from the majority of animals from other strains. The recommendation to conduct experiments in younger mice is therefore twofold if they are of this genetic background, and we advise future studies move towards using other strains.

This review has brought together the existing research into the central auditory function of a wide range of rodent models of autism. While some measures of auditory function show inconsistent results across studies, others have emerged as strong endophenotypes across models which also recapitulate auditory endophenotypes from humans with autism. Other studies have provided insight into the underlying cellular changes driving these endophenotypes. We hope that this review will be informative for further studies with regard to existing data and best practices for future studies, to ultimately further understanding of the development of the auditory system in human autism.

Abbreviations

ASD: Autism spectrum disorders; EEG: Electroencephalography; MEG: Magnetoencephalography; fMRI: Functional magnetic resonance imaging; ABRs: Auditory brainstem responses; ERPs: Cortical event-related potentials; FXS: Fragile X syndrome; iASD: Idiopathic autism spectrum disorder; DCN: Dorsal cochlear nucleus; VCN: Ventral cochlear nucleus; AVCN: Anterior VCN; PVCN: Posterior VCN; SOC: Superior olivary complex; MSO: Medial superior olive; LSO: Lateral superior olive; MNTB: Medial nucleus of the trapezoid body; LNTB: Lateral nucleus of the trapezoid; SPON: Superior paraolivary nucleus; LL: Lateral lemniscus; DNLL: Dorsal nucleus lateral lemniscus; VNLL: Ventral nucleus lateral lemniscus; IC: Inferior colliculus; CNIC: Central nucleus of the inferior colliculus; MGN: Medial geniculate nucleus; TRN: Thalamic reticular nucleus; A1: Primary auditory cortex; A2: Secondary auditory cortex; AAF: Anterior auditory field; PFC: Prefrontal cortex; VPA: Valproic acid; LPS: Lipopolysaccharide; ITC: Inter-trial coherence; ASR: Acoustic startle response; PPI: Pre-pulse inhibition; mEPSPs: Miniature excitatory post-synaptic potentials; mIPSPs: Miniature inhibitory post-synaptic potentials.

Supplementary Information

The online version contains supplementary material available at <https://doi.org/10.1186/s11689-022-09458-6>.

Additional file 1: Supplementary Table 1. Primary research articles which passed the criteria for inclusion in the systematic review. Studies conducted using mouse models on the C57/Black6 background at an age over 3 months are indicated by an asterisk after the author name. **Supplementary Table 2.** Rodent models with auditory phenotypes described in this review. Gene names are formatted as in the cited papers, with alternate names for equivalent human genes used in SFARI gene in brackets where relevant. **Supplementary Figure 1.** The ascending auditory processing pathway with presumed changes in autism based on results from human studies. Excitatory (red) and inhibitory (blue) connections between structures along the pathway are illustrated along with the changes to these connections and the activity within areas in human autism studies. Connections are primarily ipsilateral unless otherwise stated. Responses in the superior olivary complex occur later, likely due to slower transmission from the cochlear nuclei. Responses in the inferior colliculus also occur later, but it is unclear whether it is input from the cochlear nuclei or the superior olivary complex, or both, which is delayed. Signals from the auditory thalamus take longer to reach the auditory cortex in human autism papers. There is decreased activity and increased latency (N1), and reduced gamma in the auditory cortex in human autism studies.

Acknowledgements

We thank members of the Synaptic Function Research Group and Auditory & Vestibular Translational Neuroscience Cluster for helpful discussion on areas related to this review. We thank the funders for supporting this review.

Authors' contributions

MW, LC, PRT, JMM, EKS, and JEC wrote the manuscript. MW prepared the figures and tables. MW and JEC designed and conducted the literature search. The author(s) read and approved the final manuscript.

Funding

This work was supported by the New Zealand Neurological Foundation, Marsden Fund, and Auckland Medical Research Foundation. Maya Wilde is supported by a University of Queensland Doctoral Scholarship.

Availability of data and materials

Not applicable.

Declarations**Ethics approval and consent to participate**

Not applicable.

Consent for publication

Not applicable.

Competing interests

The authors declare no competing interests.

Author details

¹The Queensland Brain Institute, The University of Queensland, Brisbane, QLD 4072, Australia. ²Department of Physiology, Faculty of Medical and Health Sciences, Centre for Brain Research, University of Auckland, Auckland, New Zealand. ³Section of Audiology, School of Population Health, Faculty of Medical and Health Sciences, University of Auckland, Auckland, New Zealand. ⁴Department of Anatomy and Physiology, School of Biomedical Sciences, The University of Melbourne, Parkville, VIC 3010, Australia.

Received: 6 March 2022 Accepted: 7 August 2022

Published online: 30 August 2022

References

- Abrahams BS, Arking DE, Campbell DB, Mefford HC, Morrow EM, Weiss LA, et al. SFARI Gene 2.0: a community-driven knowledgebase for the autism spectrum disorders (ASDs). *Mol Autism*. 2013;4(1):36. <https://doi.org/10.1186/2040-2392-4-36>.
- Aguillon-Rodriguez V, Angelaki D, Bayer H, Bonacchi N, Carandini M, Cazes F, et al. Standardized and reproducible measurement of decision-making in mice. *ELife*. 2021;10. <https://doi.org/10.7554/eLife.63711>.
- American Psychiatric Association. Diagnostic and statistical manual of mental disorders; 2013. <https://doi.org/10.1176/appi.books.9780890425596>.
- Anomal RF, De Villiers-Sidani E, Brandão JA, Diniz R, Costa MR, Romcy-Pereira RN. Impaired processing in the primary auditory cortex of an animal model of autism. *Front Syst Neurosci*. 2015;9(November). <https://doi.org/10.3389/fnsys.2015.00158>.
- Antunes LM, Gollidge HDR, Roughan JV, Flecknell PA. Comparison of electroencephalogram activity and auditory evoked responses during isoflurane and halothane anaesthesia in the rat. *Vet Anaesth Analg*. 2003;30(1):15–23. <https://doi.org/10.1046/J.1467-2995.2003.00085.X>.
- Auerbach BD, Manohar S, Radziwon K, Salvi R. Auditory hypersensitivity and processing deficits in a rat model of fragile X syndrome. *Neurobiol Dis*. 2021;161:105541. <https://doi.org/10.1016/j.nbd.2021.105541>.
- Banerjee A, Engineer CT, Sauls BL, Morales AA, Kilgard MP, Ploski JE. Abnormal emotional learning in a rat model of autism exposed to valproic acid in utero. *Front Behav Neurosci*. 2014;0:387. <https://doi.org/10.3389/fnbeh.2014.00387>.
- Barnes SA, Pinto-Duarte A, Kappe A, Zembrzycki A, Metzler A, Mukamel EA, et al. Disruption of mGluR5 in parvalbumin-positive interneurons induces core features of neurodevelopmental disorders. *Mol Psychiatry*. 2015;20(10):1161–72. <https://doi.org/10.1038/mp.2015.113>.
- Bartlett EL. The organization and physiology of the auditory thalamus and its role in processing acoustic features important for speech perception. *Brain Lang*. 2013;126(1):29–48. <https://doi.org/10.1016/j.bandl.2013.03.003>.
- Basu SN, Kollu R, Banerjee-Basu S. AutDB: a gene reference resource for autism research. *Nucleic Acids Res*. 2009;37(SUPPL. 1). <https://doi.org/10.1093/nar/gkn835>.
- Bracic G, Hegmann K, Engel J, Kurt S. Impaired subcortical processing of amplitude-modulated tones in mice deficient for *Cacna2d3*, a risk gene for autism spectrum disorders in humans. *ENeuro*. 2022;9(2):ENEURO.0118-22.2022. <https://doi.org/10.1523/ENEURO.0118-22.2022>.
- Brewer AA, Barton B. Maps of the auditory cortex. *Annu Rev Neurosci*. 2016;39:385–407. <https://doi.org/10.1146/annurev-neuro-070815-014045>.
- Brunner D, Kabitzke P, He D, Cox K, Thiede L, Hanania T, et al. Comprehensive analysis of the 16p11.2 deletion and null *cntnap2* mouse models of autism spectrum disorder. *PLoS One*. 2015;10(8):134572. <https://doi.org/10.1371/journal.pone.0134572>.
- Chelini G, Zerbi V, Cimino L, Grigoli A, Markicevic M, Libera F, et al. Aberrant somatosensory processing and connectivity in mice lacking engrailed-2. *J Neurosci*. 2019;39(8):1525–38. <https://doi.org/10.1523/JNEUROSCI.0612-18.2018>.
- Chen L, Toth M. Fragile X mice develop sensory hyperreactivity to auditory stimuli. *Neuroscience*. 2001;103(4):1043–50. [https://doi.org/10.1016/S0306-4522\(01\)00036-7](https://doi.org/10.1016/S0306-4522(01)00036-7).
- Cheng C, Hou Y, Zhang Z, Wang Y, Lu L, Zhang L, et al. Disruption of the autism-related gene *Pak1* causes stereocilia disorganization, hair cell loss, and deafness in mice. *J Genet Genomics*. 2021;48(4):324–32. <https://doi.org/10.1016/J.JGG.2021.03.010>.
- Cheng Y, Tang B, Zhang G, An P, Sun Y, Gao M, et al. Degraded cortical temporal processing in the valproic acid-induced rat model of autism. *Neuropharmacology*. 2022;209:109000. <https://doi.org/10.1016/J.NEUROPHARM.2022.109000>.
- Claudi F, Tyson AL, Petrucco L, Margrie TW, Portugues R, Branco T. Visualizing anatomically registered data with brainrender. *ELife*. 2021;10. <https://doi.org/10.7554/ELIFE.65751>.
- Crane L, Goddard L, Pring L. Sensory processing in adults with autism spectrum disorders. *Autism*. 2009;13(3):215–28. <https://doi.org/10.1177/1362361309103794>.
- Davis BA, David F, O'Regan C, Adam MA, Harwood AJ, Crunelli V, et al. Impairments in sensory-motor gating and information processing in a mouse model of *Ehmt1* haploinsufficiency. *Brain Neurosci Adv*. 2020;4:239821282092864. <https://doi.org/10.1177/2398212820928647>.
- Degroote S, Hunting D, Takser L. Improved assessment of sensorimotor gating in animal models relevant to ASD: a data modelling approach to quantify PrePulse Inhibition of the acoustic startle reflex. *J Neurosci Methods*. 2017;276:13–22. <https://doi.org/10.1016/j.jneumeth.2016.11.007>.
- DiCicco-Bloom E, Lord C, Zwaigenbaum L, Courchesne E, Dager SR, Schmitz C, et al. The developmental neurobiology of autism spectrum disorder. *J Neurosci*. 2006;26:6897–906. <https://doi.org/10.1523/JNEUROSCI.1712-06.2006>.
- Didriksen M, Fejgin K, Nilsson SRO, Birknow MR, Grayton HM, Larsen PH, et al. Persistent gating deficit and increased sensitivity to NMDA receptor antagonism after puberty in a new mouse model of the human 22q11.2 microdeletion syndrome: a study in male mice. *J Psychiatry Neurosci*. 2017;42(1):48–58. <https://doi.org/10.1503/jpn.150381>.
- Dubiel A, Kulesza RJ. Prenatal valproic acid exposure disrupts topotypic c-Fos expression in the rat brainstem. *Neuroscience*. 2015;311:349–61. <https://doi.org/10.1016/j.neuroscience.2015.10.043>.
- Dufour-Rainfray D, Vourc'h P, Tourlet S, Guilloteau D, Chalou S, Andres CR. Fetal exposure to teratogens: evidence of genes involved in autism. *Neurosci Biobehav Rev*. 2011;35(5):1254–65. <https://doi.org/10.1016/J.NEUBIOREV.2010.12.013>.
- Dunlop WA, Enticott PG, Rajan R. Speech discrimination difficulties in high-functioning autism spectrum disorder are likely independent of auditory hypersensitivity. *Front Hum Neurosci*. 2016;10:12. <https://doi.org/10.3389/fnhum.2016.00401>.
- Ehret G, Fischer R. Neuronal activity and tonotopy in the auditory system visualized by c-fos gene expression. *Brain Res*. 1991;567(2):350–4. [https://doi.org/10.1016/0006-8993\(91\)90819-H](https://doi.org/10.1016/0006-8993(91)90819-H).
- Engineer CT, Centanni TM, Im KW, Borland MS, Moreno NA, Carraway RS, et al. Degraded auditory processing in a rat model of autism limits the speech representation in non-primary auditory cortex. *Dev Neurobiol*. 2014a;74(10):972–86. <https://doi.org/10.1002/dneu.22175>.

29. Engineer CT, Centanni TM, Im KW, Kilgard MP. Speech sound discrimination training improves auditory cortex responses in a rat model of autism. *Front Syst Neurosci*. 2014b;8(AUG). <https://doi.org/10.3389/fnsys.2014.00137>.
30. Engineer CT, Centanni TM, Im KW, Rahebi KC, Buell EP, Kilgard MP. Degraded speech sound processing in a rat model of fragile X syndrome. *Brain Res*. 2014c;1564:72–84. <https://doi.org/10.1016/j.brainres.2015.03.049>.
31. Engineer CT, Engineer ND, Riley JR, Seale JD, Kilgard MP. Pairing speech sounds with vagus nerve stimulation drives stimulus-specific cortical plasticity. *Brain Stimul*. 2015a;8(3):637–44. <https://doi.org/10.1016/j.brs.2015.01.408>.
32. Engineer CT, Rahebi KC, Borland MS, Buell EP, Centanni TM, Fink MK, et al. Degraded neural and behavioral processing of speech sounds in a rat model of Rett syndrome. *Neurobiol Dis*. 2015b;83:26–34. <https://doi.org/10.1016/j.nbd.2015.08.019>.
33. Engineer CT, Rahebi KC, Borland MS, Buell EP, Im KW, Wilson LG, et al. Shank3-deficient rats exhibit degraded cortical responses to sound. *Autism Res*. 2018;11(1):59–68. <https://doi.org/10.1002/aur.1883>.
34. Ergaz Z, Weinstein-Fudim L, Ornoy A. Genetic and non-genetic animal models for autism spectrum disorders (ASD). *Reprod Toxicol*. 2016;64:116–40. <https://doi.org/10.1016/j.reprotox.2016.04.024>.
35. Ethridge LE, De Stefano LA, Schmitt LM, Woodruff NE, Brown KL, Tran M, et al. Auditory EEG biomarkers in fragile X syndrome: clinical relevance. *Front Integr Neurosci*. 2019;13:60. <https://doi.org/10.3389/fnint.2019.00060>.
36. Ethridge LE, White SP, Mosconi MW, Wang J, Pedapati EV, Erickson CA, et al. Neural synchronization deficits linked to cortical hyper-excitability and auditory hypersensitivity in fragile X syndrome. *Mol Autism*. 2017;8(1):1–11. <https://doi.org/10.1186/s13229-017-0140-1>.
37. Felix RA, Chavez VA, Novicio DM, Morley BJ, Portfors CV. Nicotinic acetylcholine receptor subunit $\alpha 7$ -knockout mice exhibit degraded auditory temporal processing. *J Neurophysiol*. 2019;122(2):451–65. <https://doi.org/10.1152/jn.00170.2019>.
38. Foley KA, MacFabe DF, Kavaliere M, Ossenkopp K-P. Sexually dimorphic effects of prenatal exposure to lipopolysaccharide, and prenatal and postnatal exposure to propionic acid, on acoustic startle response and prepulse inhibition in adolescent rats: relevance to autism spectrum disorders. *Behav Brain Res*. 2015;278:244–56. <https://doi.org/10.1016/j.bbr.2014.09.032>.
39. Forsingdal A, Fejgin K, Nielsen V, Werge T, Nielsen J. 15q13.3 homozygous knockout mouse model display epilepsy-, autism- and schizophrenia-related phenotypes. *Transl Psychiatry*. 2016;6(7):860. <https://doi.org/10.1038/tp.2016.125>.
40. Frankland PW, Wang Y, Rosner B, Shimizu T, Balleine BW, Dykens EM, et al. Sensorimotor gating abnormalities in young males with fragile X syndrome and Fmr1-knockout mice. *Mol Psychiatry*. 2004;9(4):417–25. <https://doi.org/10.1038/sj.mp.4001432>.
41. Fyke W, Premoli M, Echeverry Alzate V, López-Moreno JA, Lemaire-Mayo V, Crusio WE, et al. Communication and social interaction in the cannabinoid-type 1 receptor null mouse: implications for autism spectrum disorder. *Autism Res*. 2021;14(9):1854–72. <https://doi.org/10.1002/AUR.2562>.
42. Gandal MJ, Anderson RL, Billingslea EN, Carlson GC, Roberts TPL, Siegel SJ. Mice with reduced NMDA receptor expression: more consistent with autism than schizophrenia? *Genes Brain Behav*. 2012a;11(6):740–50. <https://doi.org/10.1111/j.1601-183X.2012.00816.x>.
43. Gandal MJ, Edgar JC, Ehrlichman RS, Mehta M, Roberts TPL, Siegel SJ. Validating γ oscillations and delayed auditory responses as translational biomarkers of autism. *Biol Psychiatry*. 2010;68(12):1100–6. <https://doi.org/10.1016/j.biopsych.2010.09.031>.
44. Gandal MJ, Sisti J, Klook K, Ortinski PI, Leitman V, Liang Y, et al. GABA B-mediated rescue of altered excitatory-inhibitory balance, gamma synchrony and behavioral deficits following constitutive NMDAR-hypofunction. *Transl Psychiatry*. 2012b;2(7):e142. <https://doi.org/10.1038/tp.2012.69>.
45. García-Pino E, Gessele N, Koch U. Enhanced excitatory connectivity and disturbed sound processing in the auditory brainstem of fragile X mice. *J Neurosci*. 2017;37(31):7403–19. <https://doi.org/10.1523/JNEUROSCI.2310-16.2017>.
46. Gaugler T, Klei L, Sanders SJ, Bodea CA, Goldberg AP, Lee AB, et al. Most genetic risk for autism resides with common variation. *Nat Genet*. 2014;46(8):881–5. <https://doi.org/10.1038/ng.3039>.
47. Gervais H, Belin P, Boddaert N, Leboyer M, Coez A, Sfaello I, et al. Abnormal cortical voice processing in autism. *Nat Neurosci*. 2004;7(8):801–2. <https://doi.org/10.1038/nn1291>.
48. Goffin D, Allen M, Zhang L, Amorim M, Wang ITJ, Reyes ARS, et al. Rett syndrome mutation MeCP2 T158A disrupts DNA binding, protein stability and ERP responses. *Nat Neurosci*. 2012;15(2):274–83. <https://doi.org/10.1038/nn.2997>.
49. Goffin D, Brodtkin ES, Blendy JA, Siegel SJ, Zhou Z. Cellular origins of auditory event-related potential deficits in Rett syndrome. *Nat Neurosci*. 2014;17(6):804–6. <https://doi.org/10.1038/nn.3710>.
50. Hacothen-Kleiman G, Yizhar-Barnea O, Touloumi O, Lagoudaki R, Avraham KB, Grigoriadis N, et al. Atypical auditory brainstem response and expression aberrations related to ASD and hearing loss in the Adnp haploinsufficient mouse brain. *Neurochem Res*. 2019;44(6):1494–507. <https://doi.org/10.1007/s11064-019-02723-6>.
51. Henkel CK. The auditory system. In *Fundamental neuroscience for basic and clinical applications*. 5th ed; 2018. p. 306–319.e1. <https://doi.org/10.1016/B978-0-323-39632-5.00021-9>.
52. Hessi D, Berry-Kravis E, Cordeiro L, Yuhus J, Ornitz EM, Campbell A, et al. Prepulse inhibition in fragile X syndrome: feasibility, reliability, and implications for treatment. *Am J Med Genet B Neuropsychiatr Genet*. 2009;150B(4):545. <https://doi.org/10.1002/AJMG.B.30858>.
53. Ida-Eto M, Hara N, Ohkawara T, Narita M. Mechanism of auditory hypersensitivity in human autism using autism model rats. *Pediatr Int*. 2017;59(4):404–7. <https://doi.org/10.1111/ped.13186>.
54. Jeste SS, Frohlich J, Loo SK. Electrophysiological biomarkers of diagnosis and outcome in neurodevelopmental disorders. *Curr Opin Neurol*. 2015;28(2):110. <https://doi.org/10.1097/WCO.0000000000000181>.
55. Jonak CR, Lovelace JW, Ethell IM, Razak KA, Binder DK. Multielectrode array analysis of EEG biomarkers in a mouse model of fragile X syndrome. *Neurobiol Dis*. 2020;138:104794. <https://doi.org/10.1016/j.nbd.2020.104794>.
56. King J, Insanally M, Jin M, Martins ARO, D'amour JA, Froemke RC. Rodent auditory perception: critical band limitations and plasticity. *Neuroscience*. 2015;296:55–65. <https://doi.org/10.1016/j.neuroscience.2015.03.053>.
57. Kogan JH, Gross AK, Featherstone RE, Shin R, Chen Q, Heusner CL, et al. Mouse model of chromosome 15q13.3 microdeletion syndrome demonstrates features related to autism spectrum disorder. *J Neurosci Off J Soc Neurosci*. 2015;35(49):16282–94. <https://doi.org/10.1523/JNEUROSCI.3967-14.2015>.
58. Kohl S, Wolters C, Gruendler TOJ, Vogeley K, Klosterkötter J, Kuhn J. Prepulse inhibition of the acoustic startle reflex in high functioning autism. *PLoS One*. 2014;9(3):e92372. <https://doi.org/10.1371/JOURNAL.PONE.0092372>.
59. Korzyukov O, Pflieger ME, Wagner M, Bowyer SM, Rosburg T, Sundaresan K, et al. Generators of the intracranial P50 response in auditory sensory gating. *NeuroImage*. 2007;35(2):814–26. <https://doi.org/10.1016/j.neuroimage.2006.12.011>.
60. Kulinich AO, Reinhard SM, Rais M, Lovelace JW, Scott V, Binder DK, et al. Beneficial effects of sound exposure on auditory cortex development in a mouse model of fragile X syndrome. *Neurobiol Dis*. 2020;134. <https://doi.org/10.1016/j.nbd.2019.104622>.
61. Kweon H, Jung WB, Im GH, Ryou J, Lee JH, Do H, et al. Excitatory neuronal CHD8 in the regulation of neocortical development and sensory-motor behaviors. *Cell Rep*. 2021;34(8):108780. <https://doi.org/10.1016/j.celrep.2021.108780>.
62. Landmann J, Richter F, Classen J, Richter A, Penninger JM, Bechmann I. Behavioral phenotyping of calcium channel (CACN) subunit $\alpha 2\delta 3$ knockout mice: consequences of sensory cross-modal activation. *Behav Brain Res*. 2019;364:393–402. <https://doi.org/10.1016/j.bbr.2017.12.032>.
63. Lee SH, Ripke S, Neale BM, Faraone SV, Purcell SM, Perlis RH, et al. Genetic relationship between five psychiatric disorders estimated from genome-wide SNPs. *Nat Genet*. 2013;45(9):984–94. <https://doi.org/10.1038/ng.2711>.
64. Liao W, Gandal MJ, Ehrlichman RS, Siegel SJ, Carlson GC. MeCP2+/- mouse model of RTT reproduces auditory phenotypes associated with Rett syndrome and replicate select EEG

- endophenotypes of autism spectrum disorder. *Neurobiol Dis.* 2012;46(1):88–92. <https://doi.org/10.1016/j.nbd.2011.12.048>.
65. Lichtman D, Bergmann E, Kavushansky A, Cohen N, Levy NS, Levy AP, et al. Structural and functional brain-wide alterations in A350V Iqsec2 mutant mice displaying autistic-like behavior. *Transl Psychiatry.* 2021;11(1):1–13. <https://doi.org/10.1038/s41398-021-01289-8>.
 66. Lord C, Charman T, Havdahl A, Carbone P, Anagnostou E, Boyd B, et al. The Lancet Commission on the future of care and clinical research in autism. *Lancet.* 2021;0(0). [https://doi.org/10.1016/S0140-6736\(21\)01541-5](https://doi.org/10.1016/S0140-6736(21)01541-5).
 67. Lovelace JW, Ethell IM, Binder DK, Razak KA. Translation-relevant EEG phenotypes in a mouse model of Fragile X Syndrome. *Neurobiol Dis.* 2018;115:39–48. <https://doi.org/10.1016/j.nbd.2018.03.012>.
 68. Lovelace JW, Ethell IM, Binder DK, Razak KA. Minocycline treatment reverses sound evoked EEG abnormalities in a mouse model of fragile X syndrome. *Front Neurosci.* 2020a;14:771. <https://doi.org/10.3389/fnins.2020.00771>.
 69. Lovelace JW, Rais M, Palacios AR, Shuai XS, Bishay S, Popa O, et al. Deletion of Fmr1 from forebrain excitatory neurons triggers abnormal cellular, EEG, and behavioral phenotypes in the auditory cortex of a mouse model of fragile X syndrome. *Cereb Cortex.* 2020b;30(3):969–88. <https://doi.org/10.1093/cercor/bhz141>.
 70. Lovelace JW, Wen TH, Reinhard S, Hsu MS, Sidhu H, Ethell IM, et al. Matrix metalloproteinase-deletion rescues auditory evoked potential habituation deficit in a mouse model of Fragile X Syndrome. *Neurobiol Dis.* 2016;89:126–35. <https://doi.org/10.1016/j.nbd.2016.02.002>.
 71. Lyon KA, Rood BD, Wu L, Senft RA, Goodrich LV, Dymecki SM. Sex-specific role for dopamine receptor D2 in dorsal raphe serotonergic neuron modulation of defensive acoustic startle and dominance behavior. *ENeuro.* 2020;7(6):1–23. <https://doi.org/10.1523/ENEURO.0202-20.2020>.
 72. Magnusson AK, Gómez-Álvarez M, Magnusson AK, Gómez-Álvarez M. The superior paraolivary nucleus. In: *The Oxford handbook of the auditory brainstem*; 2019. p. 394–420. <https://doi.org/10.1093/oxfordhb/9780190849061.013.11>.
 73. Mansour Y, Ahmed SN, Kulesza R. Abnormal morphology and subcortical projections to the medial geniculate in an animal model of autism. *Exp Brain Res.* 2020;1:3. <https://doi.org/10.1007/s00221-020-05982-w>.
 74. Mansour Y, Burchell A, Kulesza RJ. Central auditory and vestibular dysfunction are key features of autism spectrum disorder. *Front Integr Neurosci.* 2021;15:32. <https://doi.org/10.3389/fnint.2021.743561/BIBTEX>.
 75. Mansour Y, Mangold S, Chosky D, Kulesza RJ. Auditory midbrain hypoplasia and dysmorphology after prenatal valproic acid exposure. *Neuroscience.* 2019;396:79–93. <https://doi.org/10.1016/j.neuroscience.2018.11.016>.
 76. Marco EJ, Hinkley LBN, Hill SS, Nagarajan SS. Sensory processing in autism: a review of neurophysiologic findings. *Pediatr Res.* 2011;69(5 PART 2):48R. <https://doi.org/10.1203/PDR.0b013e3182130c54>.
 77. Markram K, Markram H. The intense world theory - a unifying theory of the neurobiology of autism. *Front Hum Neurosci.* 2010;4(1):224. <https://doi.org/10.3389/fnhum.2010.00224>.
 78. McCullagh EA, Rotschafer SE, Auerbach BD, Klug A, Kaczmarek LK, Cramer KS, et al. Mechanisms underlying auditory processing deficits in fragile X syndrome. *FASEB J.* 2020;34:3501–18. <https://doi.org/10.1096/fj.201902435R>.
 79. Michalon A, Sidorov M, Ballard TM, Ozmen L, Spooen W, Wettstein JG, et al. Chronic pharmacological mGlu5 inhibition corrects fragile X in adult mice. *Neuron.* 2012;74(1):49–56. <https://doi.org/10.1016/j.neuron.2012.03.009>.
 80. Michetti C, Caruso A, Pagani M, Sabbioni M, Medrihan L, David G, et al. The knockout of synapsin II in mice impairs social behavior and functional connectivity generating an ASD-like phenotype. *Cereb Cortex.* 2017;27(10):5014–23. <https://doi.org/10.1093/cercor/bhx207>.
 81. Millin R, Kolodny T, Flevaris AV, Kale AM, Schallmo MP, Gerdts J, et al. Reduced auditory cortical adaptation in autism spectrum disorder. *ELife.* 2018;7. <https://doi.org/10.7554/eLife.36493>.
 82. Miron O, Beam AL, Kohane IS. Auditory brainstem response in infants and children with autism spectrum disorder: a meta-analysis of wave V. *Autism Res.* 2018;11(2):355–63. <https://doi.org/10.1002/AUR.1886>.
 83. Modi ME, Sahin M. Translational use of event-related potentials to assess circuit integrity in ASD. *Nat Rev Neurol.* 2017;13:160–70. <https://doi.org/10.1038/nrneurol.2017.15>.
 84. Möhrle D, Wang W, Whitehead SN, Schmid S. GABAB receptor agonist R-baclofen reverses altered auditory reactivity and filtering in the Cntnap2 knock-out rat. *Front Integr Neurosci.* 2021;0:25. <https://doi.org/10.3389/FNINT.2021.710593>.
 85. Molenhuis RT, Bruining H, Rimmelink E, De Visser L, Loos M, Burbach JPH, et al. Limited impact of Cntn4 mutation on autism-related traits in developing and adult C57BL/6J mice. *J Neurodev Disord.* 2016;8(1):1–8. <https://doi.org/10.1186/s11689-016-9140-2>.
 86. Morel C, Christophe A, Maguin-Gaté K, Paoli J, David Turner J, Schroeder H, et al. Head-to-head study of developmental neurotoxicity and resultant phenotype in rats: α -hexabromocyclododecane versus valproic acid, a recognized model of reference for autism spectrum disorders. *Toxics.* 2022;10(4):180. <https://doi.org/10.3390/TOXICS10040180>.
 87. Nagode DA, Meng X, Winkowski DE, Smith E, Khan-Tareen H, Karedy V, et al. Abnormal development of the earliest cortical circuits in a mouse model of autism spectrum disorder. *Cell Rep.* 2017;18(5):1100–8. <https://doi.org/10.1016/j.celrep.2017.01.006>.
 88. Nakajima M, Schmitt LI, Feng G, Halassa MM. Combinatorial targeting of distributed forebrain networks reverses noise hypersensitivity in a model of autism spectrum disorder. *Neuron.* 2019;104(3):488–500.e11. <https://doi.org/10.1016/j.neuron.2019.09.040>.
 89. Nakajima M, Nishikawa C, Miyasaka Y, Kikkawa Y, Mori H, Tsuruta M, et al. Dilation of the inferior colliculus and hypersensitivity to sound in Wnt1-cre and Wnt1-GAL4 double-transgenic mice. *Neurosci Lett.* 2014;566:236–40. <https://doi.org/10.1016/j.neulet.2014.02.061>.
 90. Negwer M, Piera K, Heslen R, Lütje L, Aarts L, Schubert D, et al. EHMT1 regulates parvalbumin-positive interneuron development and GABAergic input in sensory cortical areas. *Brain Struct Funct.* 2020;225(9):2701–16. <https://doi.org/10.1007/s00429-020-02149-9>.
 91. Nguyen AO, Binder DK, Ethell IM, Razak KA. Abnormal development of auditory responses in the inferior colliculus of a mouse model of fragile X syndrome. *J Neurophysiol.* 2020;123(6):2101–21. <https://doi.org/10.1152/jn.00706.2019>.
 92. Nielsen DM, Derber WJ, McClellan DA, Crnic LS. Alterations in the auditory startle response in Fmr1 targeted mutant mouse models of fragile X syndrome. *Brain Res.* 2002;927(1):8–17. [https://doi.org/10.1016/S0006-8993\(01\)03309-1](https://doi.org/10.1016/S0006-8993(01)03309-1).
 93. Olmos-Serrano JL, Corbin JG, Burns MP. The GABAA receptor agonist THIP ameliorates specific behavioral deficits in the mouse model of fragile X syndrome. *Dev Neurosci.* 2011;33(5):395–403. <https://doi.org/10.1159/000332884>.
 94. Page MJ, McKenzie JE, Bossuyt PM, Boutron I, Hoffmann TC, Mulrow CD, et al. The PRISMA 2020 statement: an updated guideline for reporting systematic reviews. *BMJ.* 2021;372. <https://doi.org/10.1136/bmj.n71>.
 95. Park SN, Back SA, Park KH, Kim DK, Park SY, Oh JH, et al. Comparison of cochlear morphology and apoptosis in mouse models of presbycusis. *Clin Exp Otorhinolaryngol.* 2010;3(3):126–35. <https://doi.org/10.3342/ceo.2010.3.3.126>.
 96. Perrino PA, Chamberlain SJ, Eigsti I, Fitch RH. Communication-related assessments in an Angelman syndrome mouse model. *Brain Behav.* 2020. <https://doi.org/10.1002/brb3.1937>.
 97. Perry W, Minassian A, Lopez B, Maron L, Lincoln A. Sensorimotor gating deficits in adults with autism. *Biol Psychiatry.* 2007;61(4):482–6. <https://doi.org/10.1016/j.biopsych.2005.09.025>.
 98. Petralia RS, Wenthold RJ. Neurotransmitters in the auditory system. In: *Encyclopedia of neuroscience*; 2008. p. 2847–53. https://doi.org/10.1007/978-3-540-29678-2_3957.
 99. Pillion JP, Boatman-Reich D, Gordon B. Auditory brainstem pathology in autism spectrum disorder: a review. *Cogn Behav Neurol.* 2018;31(2):53–78. <https://doi.org/10.1097/WNN.0000000000000154>.
 100. Pinto D, Delaby E, Merico D, Barbosa M, Merikangas A, Klei L, et al. Convergence of genes and cellular pathways dysregulated in autism spectrum disorders. *Am J Hum Genet.* 2014;94(5):677–94. <https://doi.org/10.1016/j.ajhg.2014.03.018>.
 101. Pirbhoy PS, Jonak CR, Syed R, Argueta DA, Perez PA, Wiley MB, et al. Increased 2-arachidonoyl-sn-glycerol levels normalize cortical responses to sound and improve behaviors in Fmr1 KO mice.

- J Neurodev Disord. 2021;13(1):1–19. <https://doi.org/10.1186/S11689-021-09394-X>.
102. Pirbhoy PS, Rais M, Lovelace JW, Woodard W, Razak KA, Binder DK, et al. Acute pharmacological inhibition of matrix metalloproteinase-9 activity during development restores perineuronal net formation and normalizes auditory processing in Fmr1 KO mice. *J Neurochem*. 2020;155(5):538–58. <https://doi.org/10.1111/jnc.15037>.
 103. Pop-Jordanova N, Plasevska-Karanfilska D. Autism-genetics, electrophysiology and clinical syndromes. *CONTRIBUTIONS. Sec Med Sci*. 2014;XXV:1.
 104. Port RG, Edgar JC, Ku M, Bloy L, Murray R, Blaskey L, et al. Maturation of auditory neural processes in autism spectrum disorder - a longitudinal MEG study. *NeuroImage Clin*. 2016;11:566–77. <https://doi.org/10.1016/j.nicl.2016.03.021>.
 105. Port RG, Gaetz W, Bloy L, Wang D-J, Blaskey L, Kuschner ES, et al. Exploring the relationship between cortical GABA concentrations, auditory gamma-band responses and development in ASD: evidence for an altered maturational trajectory in ASD. *Autism Res*. 2017a;10(4):593–607. <https://doi.org/10.1002/aur.1686>.
 106. Port RG, Gajewski C, Krizman E, Dow HC, Hirano S, Brodtkin ES, et al. Protocadherin 10 alters γ oscillations, amino acid levels, and their coupling; baclofen partially restores these oscillatory deficits. *Neurobiol Dis*. 2017b;108:324–38. <https://doi.org/10.1016/j.nbd.2017.08.013>.
 107. Rais M, Binder DK, Razak KA, Ethell IM. Sensory processing phenotypes in fragile X syndrome. *ASN Neuro*. 2018;10:1759091418801092. <https://doi.org/10.1177/1759091418801092>.
 108. Reinwald JR, Sartorius A, Weber-Fahr W, Sack M, Becker R, Didriksen M, et al. Separable neural mechanisms for the pleiotropic association of copy number variants with neuropsychiatric traits. *Transl Psychiatry*. 2020;10(1):1–13. <https://doi.org/10.1038/s41398-020-0771-4>.
 109. Rendall AR, Ford AL, Perrino PA, Holly Fitch R. Auditory processing enhancements in the T52-neo mouse model of Timothy syndrome, a rare genetic disorder associated with autism spectrum disorders. *Adv Neurodev Disord*. 2017;1(3):176–89. <https://doi.org/10.1007/s41252-017-0029-1>.
 110. Rendall AR, Perrino PA, Buscarello AN, Fitch RH, Shank3B mutant mice display pitch discrimination enhancements and learning deficits. *Int J Dev Neurosci*. 2018;72:13–21. <https://doi.org/10.1016/j.ijdevneu.2018.10.003>.
 111. Reynolds S, Millette A, Devine DP. Sensory and motor characterization in the postnatal valproate rat model of autism. *Dev Neurosci*. 2012;34(2–3):258–67. <https://doi.org/10.1159/000336646>.
 112. Robertson CE, Baron-Cohen S. Sensory perception in autism. *Nat Rev Neurosci*. 2017;18:671–84. <https://doi.org/10.1038/nrn.2017.112>.
 113. Roche KJ, Leblanc JJ, Levin AR, O'Leary HM, Baczewski LM, Nelson CA. Electroencephalographic spectral power as a marker of cortical function and disease severity in girls with Rett syndrome. *J Neurodev Disord*. 2019;11(1). <https://doi.org/10.1186/s11689-019-9275-z>.
 114. Rojas MJ, Navas JA, Rector DM. Evoked response potential markers for anesthetic and behavioral states. *Am J Physiol Regul Integr Comp Physiol*. 2006;291(1). <https://doi.org/10.1152/AJPREGU.00409.2005>.
 115. Rotschafer SE, Cramer KS. Developmental emergence of phenotypes in the auditory brainstem nuclei of Fmr1 knockout mice. *ENeuro*. 2017;4(6). <https://doi.org/10.1523/ENEURO.0264-17.2017>.
 116. Rotschafer SE, Marshak S, Cramer KS. Deletion of Fmr1 alters function and synaptic inputs in the auditory brainstem. *PLoS One*. 2015;10(2):e0117266. <https://doi.org/10.1371/journal.pone.0117266>.
 117. Rotschafer S, Razak K. Altered auditory processing in a mouse model of fragile X syndrome. *Brain Res*. 2013;1506:12–24. <https://doi.org/10.1016/j.brainres.2013.02.038>.
 118. Ruby K, Falvey K, Kulesza RJ. Abnormal neuronal morphology and neurochemistry in the auditory brainstem of Fmr1 knockout rats. *Neuroscience*. 2015;303:285–98. <https://doi.org/10.1016/j.neuroscience.2015.06.061>.
 119. Saby JN, Peters SU, Roberts TPL, Nelson CA, Marsh ED. Evoked potentials and EEG analysis in Rett syndrome and related developmental encephalopathies: towards a biomarker for translational research. *Front Integr Neurosci*. 2020;14:30. <https://doi.org/10.3389/fnint.2020.00030>.
 120. Saenz M, Langers DRM. Tonotopic mapping of human auditory cortex. *Hear Res*. 2014;307:42–52. <https://doi.org/10.1016/j.heares.2013.07.016>.
 121. Saunders JA, Tatar-Leitman VM, Suh J, Billingslea EN, Roberts TP, Siegel SJ. Knockout of NMDA receptors in parvalbumin interneurons recreates autism-like phenotypes. *Autism Res*. 2013;6(2):69–77. <https://doi.org/10.1002/aur.1264>.
 122. Schmitt LM, Wang J, Pedapati EV, Thurman AJ, Abbeduto L, Erickson CA, et al. A neurophysiological model of speech production deficits in fragile X syndrome. *Brain Commun*. 2020;2(1). <https://doi.org/10.1093/braincomms/fcz042>.
 123. Scott KE, Mann RS, Schormans AL, Schmid S, Allman BL. Hyperexcitable and immature-like neuronal activity in the auditory cortex of adult rats lacking the language-linked CNTNAP2 gene. *Cereb Cortex*. 2022. <https://doi.org/10.1093/CERCOR/BHAB517>.
 124. Scott KE, Schormans AL, Pacoli KY, De Oliveira C, Allman BL, Schmid S. Altered auditory processing, filtering, and reactivity in the cntnap2 knock-out rat model for neurodevelopmental disorders. *J Neurosci*. 2018;38(40):8588–604. <https://doi.org/10.1523/JNEUROSCI.0759-18.2018>.
 125. Scott KE, Schulz SE, Moehrl D, Allman BL, Cardy JEO, Stevenson RA, et al. Closing the species gap: translational approaches to studying sensory processing differences relevant for autism spectrum disorder. *Autism Res*. 2021;14(7):1322–31. <https://doi.org/10.1002/AUR.2533>.
 126. Seif A, Shea C, Schmid S, Stevenson RA. A systematic review of brainstem contributions to autism spectrum disorder. *Front Integr Neurosci*. 2021;15:39. <https://doi.org/10.3389/FNINT.2021.760116/BIBTEX>.
 127. Shofty B, Bergmann E, Zur G, Asleh J, Bosak N, Kavushansky A, et al. Autism-associated Nf1 deficiency disrupts corticocortical and corticostriatal functional connectivity in human and mouse. *Neurobiol Dis*. 2019;130:104479. <https://doi.org/10.1016/j.nbd.2019.104479>.
 128. Silverman JL, Thurm A, Ethridge SB, Soller MM, Petkova SP, Abel T, et al. Reconsidering animal models used to study autism spectrum disorder: current state and optimizing future. *Genes Brain Behav*. 2022. <https://doi.org/10.1111/GBB.12803>.
 129. Simpson K, Adams D, Alston-Knox C, Heussler HS, Keen D. Exploring the sensory profiles of children on the autism spectrum using the Short Sensory Profile-2 (SSP-2). *J Autism Dev Disord*. 2019;49(5):2069–79. <https://doi.org/10.1007/s10803-019-03889-2>.
 130. Sinclair D, Featherstone R, Naschek M, Nam J, Du A, Wright S, et al. GABA-B agonist baclofen normalizes auditory-evoked neural oscillations and behavioral deficits in the Fmr1 knockout mouse model of fragile X syndrome. *ENeuro*. 2017a;4(1). <https://doi.org/10.1523/ENEURO.0380-16.2017>.
 131. Sinclair D, Oranje B, Razak KA, Siegel SJ, Schmid S. Sensory processing in autism spectrum disorders and fragile X syndrome—from the clinic to animal models. *Neurosci Biobehav Rev*. 2017b;76(Pt B):235–53. <https://doi.org/10.1016/j.neubiorev.2016.05.029>.
 132. Smith A, Storti S, Lukose R, Kulesza RJ. Structural and functional aberrations of the auditory brainstem in autism spectrum disorder. *J Am Osteopath Assoc*. 2019;119(1):41–50. <https://doi.org/10.7556/jaoa.2019.007>.
 133. Song YJ, Xing B, Barbour AJ, Zhou C, Jensen FE. Dysregulation of GABAA receptor-mediated neurotransmission during the auditory cortex critical period in the fragile X syndrome mouse model. *Cereb Cortex*. 2021. <https://doi.org/10.1093/CERCOR/BHAB203>.
 134. Stamou M, Streifel KM, Goines PE, Lein PJ. Neuronal connectivity as a convergent target of gene \times environment interactions that confer risk for autism spectrum disorders. *Neurotoxicol Teratol*. 2013;36:3–16. <https://doi.org/10.1016/j.ntt.2012.12.001>.
 135. Suetterlin P, Hurlley S, Mohan C, Riegman KLH, Pagani M, Caruso A, et al. Altered neocortical gene expression, brain overgrowth and functional over-connectivity in Chd8 haploinsufficient mice. *Cereb Cortex (New York, NY)*. 2018;28(6):2192–206. <https://doi.org/10.1093/cercor/bhy058>.
 136. Sysoeva OV, Smirnov K, Stroganova TA. Sensory evoked potentials in patients with Rett syndrome through the lens of animal studies: systematic review. *Clin Neurophysiol*. 2020;131(1):213–24. <https://doi.org/10.1016/j.clinph.2019.11.003>.
 137. Sztainberg Y, Zoghbi HY. Lessons learned from studying syndromic autism spectrum disorders. *Nat Neurosci*. 2016;19:1408–18. <https://doi.org/10.1038/nn.4420>.
 138. Thomas AM, Schwartz MD, Saxe MD, Kilduff TS. Sleep/wake physiology and quantitative electroencephalogram analysis of the neuroligin-3 knockout rat model of autism spectrum disorder. *Sleep*. 2017;40(10). <https://doi.org/10.1093/SLEEP/ZSX138>.
 139. Tomchek SD, Dunn W. Sensory processing in children with and without autism: a comparative study using the short sensory profile. *Am J Occup Ther*. 2007;61(2):190–200. <https://doi.org/10.5014/ajot.61.2.190>.

140. Truong DT, Rendall AR, Castelluccio BC, Eigsti IM, Holly R. Auditory processing and morphological anomalies in medial geniculate nucleus of *Cntnap2* mutant mice. *Behav Neurosci*. 2015;129(6):731–41. <https://doi.org/10.1037/bne000096>.
141. Typlt M, Mirkowski M, Azzopardi E, Ruettinger L, Ruth P, Schmid S. Mice with deficient BK channel function show impaired prepulse inhibition and spatial learning, but normal working and spatial reference memory. *PLoS One*. 2013;8(11):e81270. <https://doi.org/10.1371/journal.pone.0081270>.
142. Van Diepen RM, Mazaheri A. The caveats of observing inter-trial phase-coherence in cognitive neuroscience. *Sci Rep*. 2018;8(1):1–9. <https://doi.org/10.1038/s41598-018-20423-z>.
143. Völker LA, Maar BA, Pulido Guevara BA, Bilkei-Gorzo A, Zimmer A, Brönneke H, et al. *Neph2/Kirrel3* regulates sensory input, motor coordination, and home-cage activity in rodents. *Genes Brain Behav*. 2018;17(8):e12516. <https://doi.org/10.1111/gbb.12516>.
144. Wang J, Barstein J, Ethridge LE, Mosconi MW, Takarae Y, Sweeney JA. Resting state EEG abnormalities in autism spectrum disorders. *J Neurodev Disord*. 2013;5(1). <https://doi.org/10.1186/1866-1955-5-24>.
145. Wang T, De Kok L, Willemsen R, Elgersma Y, Borst JGG. In vivo synaptic transmission and morphology in mouse models of tuberous sclerosis, fragile X syndrome, neurofibromatosis type 1, and Costello syndrome. *Front Cell Neurosci*. 2015;9(JULY):234. <https://doi.org/10.3389/fncel.2015.00234>.
146. Wen TH, Afroz S, Reinhard SM, Palacios AR, Tapia K, Binder DK, et al. Genetic reduction of matrix metalloproteinase-9 promotes formation of perineuronal nets around parvalbumin-expressing interneurons and normalizes auditory cortex responses in developing *Fmr1* knock-out mice. *Cereb Cortex*. 2018;28(11):3951–64. <https://doi.org/10.1093/cercor/bhx258>.
147. Wen TH, Lovelace JW, Ethell IM, Binder DK, Razak KA. Developmental changes in EEG phenotypes in a mouse model of fragile X syndrome. *Neuroscience*. 2019;398:126–43. <https://doi.org/10.1016/j.neuroscience.2018.11.047>.
148. Winkler I, Denham S, Escera C. Auditory event-related potentials. *Encyclopedia Comput Neurosci*. 2013:1–29. https://doi.org/10.1007/978-1-4614-7320-6_99-1.
149. Wong-Riley MTT. Cytochrome oxidase: an endogenous metabolic marker for neuronal activity. *Trends Neurosci*. 1989;12(3):94–101. [https://doi.org/10.1016/0166-2236\(89\)90165-3](https://doi.org/10.1016/0166-2236(89)90165-3).
150. Xiong Q, Oviedo HV, Trotman LC, Zador AM. PTEN regulation of local and long-range connections in mouse auditory cortex. *J Neurosci*. 2012;32(5):1643–52. <https://doi.org/10.1523/JNEUROSCI.4480-11.2012>.
151. Yang M, Mahrt EJ, Lewis F, Foley G, Portmann T, Dolmetsch RE, et al. 16p11.2 deletion syndrome mice display sensory and ultrasonic vocalization deficits during social interactions. *Autism Res*. 2015;8(5):507–21. <https://doi.org/10.1002/aur.1465>.
152. Zhou C, Yan S, Qian S, Wang Z, Shi Z, Xiong Y, et al. Atypical response properties of the auditory cortex of awake *MECP2*-overexpressing mice. *Front Neurosci*. 2019;13(MAY):439. <https://doi.org/10.3389/fnins.2019.00439>.
153. Zimmerman R, Patel R, Smith A, Pasos J, Kulesza RJ. Repeated prenatal exposure to valproic acid results in auditory brainstem hypoplasia and reduced calcium binding protein immunolabeling. *Neuroscience*. 2018;377:53–68. <https://doi.org/10.1016/j.neuroscience.2018.02.030>.
154. Zimmerman R, Smith A, Fecht T, Mansour Y, Kulesza RJ. In utero exposure to valproic acid disrupts ascending projections to the central nucleus of the inferior colliculus from the auditory brainstem. *Exp Brain Res*. 2020;238(3):551–63. <https://doi.org/10.1007/s00221-020-05729-7>.

Publisher's Note

Springer Nature remains neutral with regard to jurisdictional claims in published maps and institutional affiliations.

Ready to submit your research? Choose BMC and benefit from:

- fast, convenient online submission
- thorough peer review by experienced researchers in your field
- rapid publication on acceptance
- support for research data, including large and complex data types
- gold Open Access which fosters wider collaboration and increased citations
- maximum visibility for your research: over 100M website views per year

At BMC, research is always in progress.

Learn more biomedcentral.com/submissions

