



Minerva Access is the Institutional Repository of The University of Melbourne

Author/s:

Constantinides, C; Han, LKM; Alloza, C; Antonucci, LA; Arango, C; Ayesa-Arriola, R; Banaj, N; Bertolino, A; Borgwardt, S; Bruggemann, J; Bustillo, J; Bykhovski, O; Calhoun, V; Carr, V; Catts, S; Chung, YC; Crespo-Facorro, B; Díaz-Caneja, CM; Donohoe, G; Plessis, SD; Edmond, J; Ehrlich, S; Emsley, R; Eyler, LT; Fuentes-Claramonte, P; Georgiadis, F; Green, M; Guerrero-Pedraza, A; Ha, M; Hahn, T; Henskens, FA; Holleran, L; Homan, S; Homan, P; Jahanshad, N; Janssen, J; Ji, E; Kaiser, S; Kaleda, V; Kim, M; Kim, WS; Kirschner, M; Kochunov, P; Kwak, YB; Kwon, JS; Lebedeva, I; Liu, J; Mitchie, P; Michielse, S; Mothersill, D; Mowry, B; de la Foz, VOG; Pantelis, C; Pergola, G; Piras, F; Pomarol-Clotet, E; Preda, A; Quidé, Y; Rasser, PE; Roesl-Murdy, K; Salvador, R; Sangiuliano, M; Sarró, S; Schall, U; Schmidt, A; Scott, RJ; Selvaggi, P; Sim, K; Skoch, A; Spalletta, G; Spaniel, F; Thomopoulos, SI; Tomecek, D; Tomyshev, AS; Tordesillas-Gutiérrez, D; van Amelsvoort, T; Vázquez-Bourgon, J; Vecchio, D; Voineskos, A; Weickert, CS; Weickert, T; Thompson, PM; Schmaal, L; van Erp, TGM; Turner, J; Cole, JH; Du Plessis, S; Bin Kwak, Y; Dima, D; Walton, E

Title:

Brain ageing in schizophrenia: evidence from 26 international cohorts via the ENIGMA Schizophrenia consortium

Date:

2023-03-01

Citation:

Constantinides, C., Han, L. K. M., Alloza, C., Antonucci, L. A., Arango, C., Ayesa-Arriola, R., Banaj, N., Bertolino, A., Borgwardt, S., Bruggemann, J., Bustillo, J., Bykhovski, O., Calhoun, V., Carr, V., Catts, S., Chung, Y. C., Crespo-Facorro, B., Díaz-Caneja, C. M., Donohoe, G., ... Walton, E. (2023). Brain ageing in schizophrenia: evidence from 26 international cohorts via the ENIGMA Schizophrenia consortium. *Molecular Psychiatry*, 28 (3), pp.1201-1209. <https://doi.org/10.1038/s41380-022-01897-w>.

Persistent Link:

<https://hdl.handle.net/11343/325581>

License:

[CC BY](#)

## ARTICLE OPEN



## Brain ageing in schizophrenia: evidence from 26 international cohorts via the ENIGMA Schizophrenia consortium

Constantinos Constantinides<sup>1</sup>, Laura K. M. Han<sup>2,3,4</sup>, Clara Alloza<sup>5,6</sup>, Linda Antonella Antonucci<sup>7,8</sup>, Celso Arango<sup>5,6</sup>, Rosa Ayesa-Arriola<sup>9,6</sup>, Nerisa Banaj<sup>10</sup>, Alessandro Bertolino<sup>7</sup>, Stefan Borgwardt<sup>11,12</sup>, Jason Bruggemann<sup>13,14</sup>, Juan Bustillo<sup>15</sup>, Oleg Bykhovskii<sup>16,17</sup>, Vince Calhoun<sup>18</sup>, Vaughan Carr<sup>13,14,19</sup>, Stanley Catts<sup>20</sup>, Young-Chul Chung<sup>21,22,23</sup>, Benedicto Crespo-Facorro<sup>5,24</sup>, Covadonga M. Díaz-Caneja<sup>5,6</sup>, Gary Donohoe<sup>25</sup>, Stefan Du Plessis<sup>26,27</sup>, Jesse Edmond<sup>28</sup>, Stefan Ehrlich<sup>29</sup>, Robin Emsley<sup>26</sup>, Lisa T. Eyler<sup>30,31</sup>, Paola Fuentes-Claramonte<sup>6,32</sup>, Foivos Georgiadis<sup>33</sup>, Melissa Green<sup>13,14</sup>, Amalia Guerrero-Pedraza<sup>32,34</sup>, Minji Ha<sup>35</sup>, Tim Hahn<sup>36</sup>, Frans A. Henskens<sup>37,38,39</sup>, Laurena Holleran<sup>25</sup>, Stephanie Homan<sup>40,41</sup>, Philipp Homan<sup>40</sup>, Neda Jahanshad<sup>42</sup>, Joost Janssen<sup>5,6</sup>, Ellen Ji<sup>40</sup>, Stefan Kaiser<sup>43</sup>, Vasily Kaleda<sup>44</sup>, Minah Kim<sup>45,46</sup>, Woo-Sung Kim<sup>21,23</sup>, Matthias Kirschner<sup>33,43,47</sup>, Peter Kochunov<sup>48</sup>, Yoo Bin Kwak<sup>35</sup>, Jun Soo Kwon<sup>35,45,46</sup>, Irina Lebedeva<sup>44</sup>, Jingyu Liu<sup>49,50</sup>, Patricia Mitchie<sup>39,51</sup>, Stijn Michielse<sup>52</sup>, David Mothersill<sup>25,53</sup>, Bryan Mowry<sup>54,55</sup>, Victor Ortiz-García de la Foz<sup>6,9</sup>, Christos Pantelis<sup>56,57</sup>, Giulio Pergola<sup>7</sup>, Fabrizio Piras<sup>10</sup>, Edith Pomarol-Clotet<sup>6,32</sup>, Adrian Preda<sup>58</sup>, Yann Quidé<sup>13,14,59</sup>, Paul E. Rasser<sup>39,60</sup>, Kelly Rootes-Murdy<sup>18,28</sup>, Raymond Salvador<sup>6,32</sup>, Marina Sangiuliano<sup>7</sup>, Salvador Sarró<sup>6,32</sup>, Ulrich Schall<sup>39,60</sup>, André Schmidt<sup>11</sup>, Rodney J. Scott<sup>61</sup>, Pierluigi Selvaggi<sup>7,62</sup>, Kang Sim<sup>63,64,65</sup>, Antonin Skoch<sup>66,67</sup>, Gianfranco Spalletta<sup>10,68</sup>, Filip Spaniel<sup>66,69</sup>, Sophia I. Thomopoulos<sup>42</sup>, David Tomecek<sup>66,70,71</sup>, Alexander S. Tomyshev<sup>44</sup>, Diana Tordesillas-Gutiérrez<sup>72,73</sup>, Therese van Amelsvoort<sup>74</sup>, Javier Vázquez-Bourgon<sup>6,9</sup>, Daniela Vecchio<sup>10</sup>, Aristotle Voineskos<sup>75,76</sup>, Cynthia S. Weickert<sup>13,14,77</sup>, Thomas Weickert<sup>13,14,77</sup>, Paul M. Thompson<sup>42</sup>, Lianne Schmaal<sup>1,2,3</sup>, Theo G. M. van Erp<sup>78,79</sup>, Jessica Turner<sup>28,50</sup>, James H. Cole<sup>80,81</sup>, ENIGMA Schizophrenia Consortium\*, Danai Dima<sup>62,82,83</sup> and Esther Walton<sup>1,83</sup>

© The Author(s) 2022

Schizophrenia (SZ) is associated with an increased risk of life-long cognitive impairments, age-related chronic disease, and premature mortality. We investigated evidence for advanced brain ageing in adult SZ patients, and whether this was associated with clinical characteristics in a prospective meta-analytic study conducted by the ENIGMA Schizophrenia Working Group. The study included data from 26 cohorts worldwide, with a total of 2803 SZ patients (mean age 34.2 years; range 18–72 years; 67% male) and 2598 healthy controls (mean age 33.8 years, range 18–73 years, 55% male). Brain-predicted age was individually estimated using a model trained on independent data based on 68 measures of cortical thickness and surface area, 7 subcortical volumes, lateral ventricular volumes and total intracranial volume, all derived from T1-weighted brain magnetic resonance imaging (MRI) scans. Deviations from a healthy brain ageing trajectory were assessed by the difference between brain-predicted age and chronological age (brain-predicted age difference [brain-PAD]). On average, SZ patients showed a higher brain-PAD of +3.55 years (95% CI: 2.91, 4.19;  $I^2 = 57.53\%$ ) compared to controls, after adjusting for age, sex and site (Cohen's  $d = 0.48$ ). Among SZ patients, brain-PAD was not associated with specific clinical characteristics (age of onset, duration of illness, symptom severity, or antipsychotic use and dose). This large-scale collaborative study suggests advanced structural brain ageing in SZ. Longitudinal studies of SZ and a range of mental and somatic health outcomes will help to further evaluate the clinical implications of increased brain-PAD and its ability to be influenced by interventions.

*Molecular Psychiatry* (2023) 28:1201–1209; <https://doi.org/10.1038/s41380-022-01897-w>

## INTRODUCTION

Schizophrenia (SZ) is associated with an increased risk of premature mortality, with an average decrease in life expectancy of ~15 years [1–3]. This is partially accounted for by suicidal behaviour or accidental deaths, as well as poor somatic health, including cardiovascular and metabolic disease [4–6]. The high prevalence of physical morbidity, long-term cognitive decline, and excess mortality seen in SZ may partly be the result of

“accelerated” ageing (i.e., a biological age which “outpaces” chronological age) [7–9]. An increasing number of studies report systemic, age-related biological changes in SZ patients, including elevated levels of oxidative stress, inflammation, and cytotoxicity [10, 11]. There is also evidence for progressive brain changes in gray and white matter structures that may begin around or after illness onset [12–18], which may, in part, reflect deviations from normal brain ageing trajectories.

A full list of author affiliations appears at the end of the paper.

Received: 28 January 2022 Revised: 14 October 2022 Accepted: 17 November 2022  
Published online: 9 December 2022

Although chronological age can be predicted accurately with neuroimaging data using machine learning, discrepancies can occur between brain-predicted age (also known as “brain age”) and chronological age [19]. This can be referred to as brain-predicted age difference (brain-PAD). A brain-PAD larger than zero indicates a brain that appears “older” than the person’s chronological age, whereas a brain-PAD lower than zero reflects a “younger” brain than expected at a given chronological age. Higher brain-PAD scores have been associated with a wide range of health-related lifestyle factors and outcomes, including smoking, higher alcohol intake, obesity (or higher BMI), cognitive impairments, major depression, type 2 diabetes, and early mortality [20–25].

To our knowledge, only a few studies have investigated brain age in adults with SZ using various machine learning algorithms or imaging (gray and/or white matter) measures. A higher brain-PAD was consistently shown in SZ patients relative to healthy individuals, with reported scores varying from +2.6 to 7.8 years across studies [26–31]. Furthermore, a greater brain-PAD was observed in first-episode SZ patients [26], and longitudinal data suggests that this gap widens predominantly during the first years after illness onset [29]. As these prior studies were performed with relatively small to moderate sample sizes (range: 43–341 patients), it is important to examine whether brain age findings in SZ can be generalised through large-scale studies consisting of many independent samples worldwide. Two recent mega-analyses with up to 1110 SZ patients across multiple cohorts found a moderate increase in brain-PAD derived from structural T1-weighted MRI (Cohen’s  $d = 0.51$ ) [32] and diffusion tensor imaging (Cohen’s  $d = 0.29$ ) [33], respectively. Validation of those findings, as well as identifying which clinical characteristics or other factors may underlie advanced brain ageing in SZ, could have diagnostic and prognostic implications for patients.

Here, we set out to investigate brain age in over 5000 individuals from the Schizophrenia Working Group within the Enhancing Neuro-Imaging Genetics through Meta-analysis (ENIGMA) consortium (26 cohorts, 15 countries), covering almost the entire adult lifespan (18–73 years). We employed a recently developed multisite brain ageing algorithm based on FreeSurfer-derived gray matter regions of interest (ROIs) [24] to examine brain-PAD differences between SZ patients and healthy controls in a prospective meta-analysis. We hypothesised significantly higher brain-PAD in SZ patients, compared to controls. In addition, we assessed whether a higher brain-PAD in SZ patients was associated with clinical characteristics, such as age of onset, length of illness, symptom severity, and antipsychotic treatment.

## METHODS

### Study samples

Twenty-six cohorts from the ENIGMA SZ working group with cross-sectional data from SZ patients ( $N = 2803$ ) and healthy controls ( $N = 2598$ ) were included in this study (18–73 years of age). Details of demographics, location, clinical characteristics (including methods for data harmonization), and inclusion/exclusion criteria for each cohort may be found in Supplementary Information (Supplementary Tables S1–3, Supplementary Fig. S1, and Supplementary Material). All sites obtained approval from the appropriate local institutional review boards and ethics committees, and all study participants provided written informed consent.

### Image acquisition and pre-processing

Structural T1-weighted brain MRI scans of each participant were acquired at each site. We used standardized protocols for image analysis and feature extraction ( $N_{\text{features}} = 153$ ) across multiple cohorts (<http://enigma.ini.usc.edu/protocols/imaging-protocols/>). FreeSurfer [34] was used to segment and extract volumes bilaterally for 14 subcortical gray matter regions (nucleus accumbens, amygdala, caudate, hippocampus, pallidum, putamen, and thalamus), 2 lateral ventricles, along with 68 regional cortical thickness and 68 regional cortical surface area measures, and total intracranial volume

(ICV). Cortical parcellations were based on the Desikan/Kiliani atlas [35]. Segmentations were visually inspected and statistically examined for outliers. Further details of image acquisition parameters, software descriptions, and quality control may be found in Supplementary Table S4 and Supplementary Material.

### Brain age prediction

We used the publicly available ENIGMA brain age model ([https://photon-ai.com/enigma\\_brainage](https://photon-ai.com/enigma_brainage)). As described and discussed in Han et al. [24], brain age models were developed separately for males and females. The training samples were based on structural brain measures from 952 males and 1236 female healthy individuals (18–75 years of age) from the ENIGMA Major Depressive Disorder (MDD) group. There is no known participant overlap between the training samples and the participant data used in this work. Briefly, FreeSurfer measures from the left and right hemispheres were combined by calculating the mean ((left + right)/2)) of volumes for subcortical regions and lateral ventricles, and thickness and surface area for cortical regions, resulting in 77 features. The 77 average structural brain measures were used as predictors in a multivariable ridge regression to model chronological age in the healthy training samples (separately for males and females), using the Python-based *sklearn* package [36]. Model performance was originally validated in training samples (through 10-fold cross-validation) and out-of-sample controls. Here, the parameters from the previously trained model(s) were applied to our test samples of healthy controls and SZ patients (and separately for males and females) to obtain brain-based age estimates for each cohort. To assess the model’s generalization performance in the test control samples, we calculated the (1) mean absolute error (MAE) between predicted brain age and chronological age, the (2) Pearson correlation coefficients between predicted brain age and chronological age ( $r$ ), and (3) the proportion of chronological age variance explained by the model ( $R^2$ ). For more detailed information on the training samples, model development/validation, and generalisation performance in the current samples, see Supplementary Material and Han et al. [24].

### Statistical analyses

Brain-PAD (predicted brain-based age minus chronological age) was calculated for each participant and used as the outcome variable. While different prediction models were built for males and females, the generated brain-PAD values were pooled across sex for subsequent statistical analyses within each cohort. Each dependent measure of the  $i$ th individual was modelled as follows:

$$\text{brain - PAD}_i = \text{intercept} + \beta_1(Dx_i) + \beta_2(\text{sex}_i) + \beta_3(\text{age}_i) + \beta_4(\text{age}_i^2) + \beta_5(\text{site}_i) + \epsilon_i \quad (1)$$

where  $Dx$  represents diagnostic status for SZ. We corrected for the well-documented systematic age bias in brain age prediction (see Supplementary Material for brief explanation of this issue) [37, 38], as well as for potential confounding effects of age and sex in our test samples, by adding age, quadratic age ( $\text{age}^2$ ), and sex as covariates to our statistical models. We included both linear and quadratic age covariates in the same model as this provided a significantly better model fit to previous data compared with models including a linear age covariate only [24]. In addition, and where applicable, multiple scanning sites/scanners were added as (n-1) dummy variables.

Within SZ patients, we also used linear models to examine associations between brain-PAD and clinical characteristics (CC):

$$\text{brain - PAD}_i = \text{intercept} + \beta_1(CC_i) + \beta_2(\text{age}_i) + \beta_2(\text{age}_i^2) + \epsilon_i \quad (2)$$

where “CC” represents either age of onset, illness duration (time from age-of-onset to time of scanning), SZ symptomatology at study inclusion (including Scale for the Assessment of Negative Symptoms—SANS Global, Scale for the Assessment of Positive Symptoms—SAPS Global, and Positive and Negative Syndrome Scale – PANSS Total), antipsychotic (AP) medication use at time of scanning (typical/atypical/both/none) or chlorpromazine (CPZ) dose equivalents (mg per day). Analyses were also repeated while additionally covarying for handedness (right/left/ambidextrous) or parental socioeconomic status (see Supplementary Material). Cohorts with less than 10 healthy controls and less than 5 participants in a particular predictor or covariate subgroup (e.g., sex, clinical characteristics) were excluded from the analyses (see Supplementary Material for more details).

Cohort-specific results were then meta-analysed using the *rma* function in the *metafor* package [39]. Random (or mixed) effects models were fitted using restricted maximum likelihood estimation and inverse-variance weighting. Statistical tests were two-sided, and results for the effects of nine clinical characteristics among SZ patients were false discovery rate (FDR) corrected (using the Benjamini-Hochberg procedure) and considered statistically significant at  $\alpha < 0.05$ . In addition, as cohorts differed in age or sex distribution, or, had multiple scanning sites (ASRB, FBIRN, Huilong, MCIC, MPRC, PAFIP) or different MRI scanners, post-hoc meta-regressions were performed to explore between-study heterogeneity in effect size with respect to the number of scanning sites (i.e., single vs. multi-site status), scanner field strength (i.e., 1.5 T vs. 3 T MRI), mean sample age or percentage of females (across cases and controls).

Finally, to better understand the contribution or importance of individual structural brain measures for making brain age predictions, we calculated Pearson's correlation coefficients between brain-predicted age and each of the 77 FreeSurfer features in each cohort. A weighted average by sample size across cohorts was then calculated for each correlation coefficient and plotted on cortical maps for illustrative purposes only. Correlation analyses were also conducted separately for SZ patients and healthy controls.

## RESULTS

### Sample characteristics

Demographics and clinical characteristics across cohorts can be found in Table 1. Mean age weighted by sample size (range) across SZ patient and healthy control cohorts was 34.22 (18.36–43.66) and 33.82 (22.58–41.41) years, respectively. Patient and control cohorts were on average 67.32% (43.75–100) males and 54.89% (38.46–100) males, respectively. Weighted mean age of onset and duration of illness across patient cohorts were 24.75 (17.55–29.99) and 10.83 (0.62–18.87) years. Mean symptom severity (PANSS total) was 62.41 (33.38–93.12). For cohorts where current antipsychotic medication type information was available, the weighted mean percentage of patients on first-generation

(typical), second-generation antipsychotics (atypical), both typical and atypical, or no antipsychotic medication was 10.05%, 67.65%, 14.73% and 7.57%, respectively.

### Brain age prediction performance

In controls, the weighted average MAE across cohorts was 7.60 (SE =  $\pm 0.40$ ) and 8.45 (SE =  $\pm 0.46$ ) years for males and females, respectively (Supplementary Fig. S2a, b). Within the SZ group, the MAE was 10.14 (SE =  $\pm 0.52$ ) and 9.61 (SE =  $\pm 0.54$ ) years for males and females, respectively (Supplementary Fig. S2c, d). Correlations between chronological age and predicted brain age were moderate to large in controls (males  $r = 0.64$ , and females  $r = 0.63$ ; both  $R^2 = 0.41$ ), and in SZ patients (males  $r = 0.58$ , and females  $r = 0.62$ ; both  $R^2 = 0.33$ ) (Supplementary Fig. S3a–d).

### Brain age differences between SZ and controls

Weighted mean brain-PAD scores were +4.39 years (SE =  $\pm 0.84$ ) in the control group and +7.74 years (SE =  $\pm 0.94$ ) in the SZ group. On average, brain-PAD was higher by +3.55 years (95% CI 2.91, 4.19;  $p < 0.0001$ ) in individuals with SZ compared to controls (Cohen's  $d = 0.48$ ; 95% CI 0.33, 0.63;  $p < 0.0001$ ) adjusted for age, age<sup>2</sup>, sex and scanning site (Fig. 1). Post-hoc sensitivity analysis excluding cohorts in which the model generalised less well (based on MAE > 10.00 or  $R^2 < 0.1$  in healthy controls) returned similar results (see Supplementary Fig. S4). Effect sizes were heterogeneous across individual cohorts ( $Q(24) = 55.15$ ,  $p < 0.0003$ ;  $I^2 = 57.53\%$ ). A significant effect was seen in 22 out of 25 cohorts, with a positive direction of mean effect size observed in all but one cohort. Across cohorts, mean brain-PAD did not differ between single versus multi-site cohorts (QM(1) = 0.033,  $p = 0.857$ ), nor between 1.5 T versus 3 T scanners (QM(1) = 0.084;  $p = 0.772$ ) or with respect to mean age (QM(1) = 0.33,  $p = 0.566$ ). There was some evidence for a moderating effect of sex at the cohort level with an attenuated association between SZ and brain-

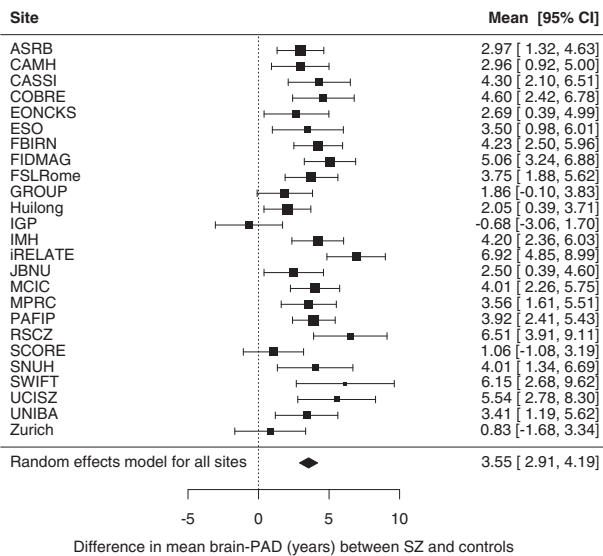
**Table 1.** Participant characteristics for patients and controls across cohorts.

Characteristic	Weighted mean (range) <sup>a</sup>		K
	SZ	HC	
Mean % males	67.32% (43.75–100)	54.89% (38.46–100)	26/25
Mean age in (years)	34.22 (18.36–43.66)	33.82 (22.58–41.41)	26/25
Mean age of onset (in years)	24.75 (17.55–29.99)	-	21/-
Mean duration of illness (in years)	10.83 (0.62–18.87)	-	21/-
Mean symptom severity (PANSS total)	62.41 (33.38–93.12)	-	20/-
Mean SANS global	7.94 (3.64–14.06)	-	22/-
Mean SAPS global	6.72 (1.41–12.53)	-	21/-
Antipsychotic medication <sup>b</sup>			21/-
Mean % Atypical	67.65% (0.00–93.00)	-	
Mean % Typical	10.05% (0.00–90.24)	-	
Mean % Both atypical & typical	14.73% (0.00–100)	-	
Mean % None	7.57% (0.00–53.62)	-	
Mean CPZ-equivalent dose	414.30 (167.88–1367.94)	-	19
Handedness			20/19
Mean % Right	91.15% (81.16–100)	91.05% (81.82–100)	
Mean % Left	6.00% (0.00–14.49)	6.45% (0.00–18.18)	
Mean % Ambidextrous	2.85% (0.00–11.1)	2.49% (0.00–11.67)	

SZ patients, HC healthy controls, K data available for K number of cohorts, SANS Scale for the Assessment of Negative Symptoms, SAPS Scale for the Assessment of Positive Symptoms, PANSS Positive and Negative Syndrome Scale, CPZ chlorpromazine.

<sup>a</sup>Unless otherwise specified, means are weighted by the number of participants per group (SZ or HC)/cohort. For continuous variables, range indicates the smallest and largest mean value across cohorts. For categorical variables (percentages), range indicates the smallest and largest proportion of participants in each category across cohorts.

<sup>b</sup>Mean percentages are weighted based on the number of cases with recorded antipsychotic type at each cohort.



**Fig. 1 Case-control differences in brain-PAD.** Forest plot of differences in mean brain-PAD scores (predicted brain age - chronological age) between patients with schizophrenia (SZ) and controls across (26 - 1) 25 cohorts (a total of 2792 cases and 2598 controls; excluding 1 cohort that contributed data for patients only), controlling for sex, age and age<sup>2</sup> and scanning site. Regression coefficients (in years) are denoted by black boxes. Black lines indicate 95% confidence intervals. The size of the box indicates the weight the cohort received (based on inverse variance weighting). The pooled estimate for all cohorts is represented by a black diamond, with the outer edges of the diamond indicating the confidence interval limits.

PAD in cohorts with a higher proportion of females ( $b = -0.069$ ,  $SE = 0.028$ ,  $QM(1) = 6.271$ ;  $p = 0.012$ ), accounting for some of the residual heterogeneity in the estimated brain-PAD difference between SZ and HC across the 25 cohorts ( $R^2 = 35.83\%$ ;  $I^2 = 46.68\%$ ). We also found a weak linear, yet not significant effect for age on brain-PAD ( $b_{age} = -0.23$ , 95% CI  $-0.47, 0.01$ ,  $p = 0.061$ ;  $b_{age^2} = -0.00$ , 95% CI  $-0.05, 0.05$ ,  $p = 0.998$ ). Additional adjustment for handedness in a smaller pool of 16 cohorts did not meaningfully change our main finding for the effect of SZ ( $+3.62$  years; 95% CI 2.82, 4.42;  $p < 0.0001$ ).

### Brain age and clinical characteristics in SZ

Among SZ patients, we found no statistically significant effects on brain-PAD of clinical characteristics, including age-of-onset, length of illness, symptom severity (PANSS total, SAPS global), antipsychotic use, and CPZ-equivalent dose after adjusting for age and age<sup>2</sup> (Table 2 and Supplementary Fig. S5a-i). A weak, positive effect for negative symptom severity (SANS global) on Brain-PAD was observed, although it did not reach significance ( $b = 0.18$ , 95% CI  $-0.01, 0.38$ ,  $p_{FDR} = 0.62$ ). In addition, no significant effects were found for typical versus atypical and both atypical and typical versus atypical medication groups (Supplementary Table S6). Further adjustment for handedness returned similar results (Supplementary Table S7).

### Correlations between brain imaging features and brain age

All imaging features, except mean lateral ventricle volume, were negatively correlated with predicted brain age (Fig. 2); thickness features correlated more strongly with brain age (mean Pearson  $r$  [SD]:  $-0.46$  [0.13]), especially in medial frontal and temporoparietal regions, than subcortical volumes ( $-0.32$  [0.30]) or surface area features ( $-0.22$  [0.06]). We also visualized these associations separately for controls and SZ patients with similar results, suggesting comparable structure coefficients in both groups (for more details see Supplementary Material).

## DISCUSSION

We assessed brain ageing in 2803 individuals with SZ and 2598 healthy controls using a novel brain age algorithm based on FreeSurfer ROIs. Results indicate that, at a group level, patients with SZ show a greater discrepancy between their brain-predicted age and chronological age compared to healthy individuals ( $+3.55$  years), with a moderate increase in brain-PAD (Cohen's  $d = 0.48$ ). The greater brain-PAD in the SZ group was not driven by any of the specific clinical characteristics assessed here (age of onset, length of illness, symptom severity, and antipsychotic use and dose). This study has two major strengths. Firstly, through a prospective meta-analytic approach within the ENIGMA consortium, we were able to assess brain age differences between SZ patients and healthy controls using standardised analysis methods across multiple independent cohorts worldwide, providing a generalised mean effect size. Second, the overall large sample size and harmonisation of data across cohorts allowed for a more reliable assessment of the relationship between clinical variables and brain-PAD among SZ patients.

The mean brain-PAD difference between patients and controls was  $+3.55$  years (Cohen's  $d = 0.48$ ) in our study. Overall, this finding is aligned with previously reported brain-PAD scores in SZ patients vs. healthy controls (range:  $+2.6$ – $7.8$  years) [26–33]. Schnack et al. [29] and a recent mega-analysis by Kaufmann et al. [32] found similar effect sizes ( $+3.4$  years and Cohen's  $d = 0.51$ , respectively) in largely non-overlapping/independent samples from this current study. On the other hand, our brain-PAD difference is smaller relative to that reported in earlier work by Koutsouleris et al. [27] and Shahab et al. [30] showing respectively  $+5.5$  to  $+7.8$  years of brain age in smaller samples of SZ patients. Several methodological differences may explain the variability in magnitude of brain age effects in SZ across studies, including the type of neuroimaging features (e.g., voxel-wise vs. ROI-based morphometric data; and/or single vs. multiple imaging modalities) [40], the machine learning algorithm used for brain age estimation [41], the size of training and test data samples, and differences in patient characteristics.

Relative to healthy controls, brain-PAD scores in SZ suggest more advanced brain ageing than in MDD ( $+1.12$  years) [42] and bipolar disorder (BD;  $+1.93$  years) [42], that may reflect more pronounced structural brain abnormalities in SZ [24]. This aligns with previous reports from the ENIGMA consortium, showing largest effect sizes of cortical and subcortical gray matter alterations in SZ (highest Cohen's  $d$  effect size = 0.53) [16, 17], followed by BD (highest Cohen's  $d = 0.32$ ) [43, 44] and MDD (highest Cohen's  $d = 0.14$ ) [45, 46]. Hence, sensitivity of brain-PAD to SZ at the group level appears to be quantitatively similar to that of leading cortical thickness and subcortical volume measures. A further key advantage of the "brain age" paradigm is that it captures multivariate age-related structural brain patterns into one (or more) composite measure(s), thereby simplifying analyses and aids interpretation with respect to normative patterns of brain ageing.

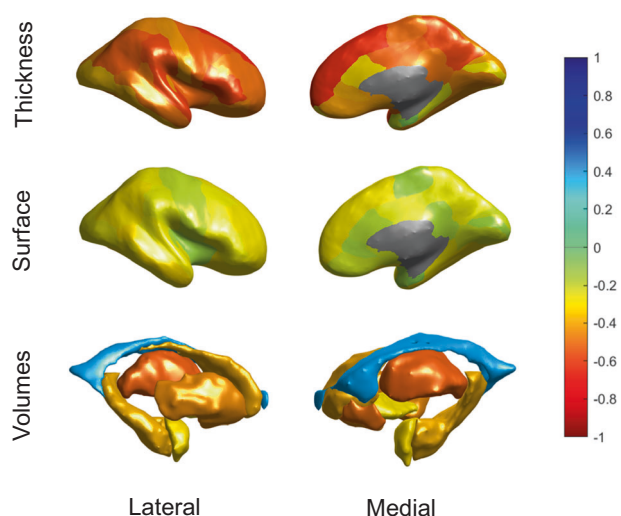
Consistent with previous reports [27, 31], we did not observe significant associations between brain-PAD and age of onset, length of illness, and antipsychotic treatment or dose among SZ patients. This suggests that a greater brain-PAD in SZ may not be primarily driven by disease progression or treatment-related effects on brain structure that have been reported elsewhere [12, 14, 18, 47, 48]. This is in keeping with previous studies showing a greater brain-PAD already present in first-episode SZ and first-episode psychosis patients [26, 49]. Using a longitudinal design, Schnack et al. investigated brain age acceleration (i.e., annual rate of change in brain-PAD) over the duration of illness in SZ ( $N = 341$ ; mean follow up period: 3.48 years). Brain-PAD started increasing by about 2.5 years (per year) just after illness onset, though this acceleration rate slowed down to a normal rate over the first 5 years of illness [29]. Lastly, in contrast to previous

**Table 2.** Clinical characteristics and brain-PAD in individuals with SZ.

Clinical parameter	N	K	beta	SE	95% CI	P <sub>FDR</sub> value
Age of onset (years)	2053	21	-0.06	0.09	-0.22, 0.11	0.84
Length of illness (years)	2056	21	0.05	0.09	-0.12, 0.22	0.84
PANSS total	1437	20	0.05	0.06	-0.06, 0.17	0.77
SANS global	1911	22	0.18	0.10	-0.01, 0.38	0.62
SAPS global	1892	21	0.14	0.12	-0.09, 0.38	0.70
AP use—atypical vs. unmed	642 (486/156)	7	1.71	1.27	-0.77, 4.19	0.70
AP use—typical vs. unmed	117 (42/72)	3	-0.13	1.00	-2.10, 1.84	0.90
AP use—both vs. unmed	266 (184/82)	4	-0.33	1.08	-2.43, 1.77	0.90
CPZ-equivalent dose	1698	19	0.00	0.01	-0.02, 0.02	0.90

K number of cohorts, N total number of participants included in each meta-analysis (where applicable, total group size for AP type use/unmedicated is given in brackets), SE standard error, CI confidence intervals. P values are false discovery rate (FDR) adjusted. SANS Scale for the Assessment of Negative Symptoms, SAPS Scale for the Assessment of Positive Symptoms, PANSS Positive and Negative Syndrome Scale, AP Antipsychotics, CPZ chlorpromazine.

Associations between clinical characteristics and brain-PAD (predicted brain age—chronological age) in SZ. For continuous variables (age of onset, length of illness, PANSS total, SANS/SAPS global and CPZ), the regression coefficient *beta* indicates a mean change in brain-PAD per unit increase in each clinical variable across cohorts. For categorical variables (AP use—typical/atypical/both atypical and typical), *beta* indicates the mean brain-PAD difference between each treatment group and unmedicated (unmed) individuals. Effects were adjusted for age and age<sup>2</sup>.

**Fig. 2** Correlation coefficients of predicted brain age and Free-Surfer features across control and schizophrenia (SZ) groups.

Bivariate correlations are shown to provide an indication of the relative contribution of features in brain age prediction. The figure shows Pearson correlations between predicted brain age and cortical thickness features (top row), cortical surface areas (middle row) and subcortical volumes (bottom row), from both the lateral (left) and medial (right) view. Features were averaged across the left and right hemispheres. The negative correlation with ICV was excluded from this figure for display purposes.

findings in SZ [27] and first-episode psychosis [49] we did not find strong evidence for a positive association between negative symptom severity and brain-PAD. An explanation for this could be that negative symptoms are more specifically linked to brain age differences at the regional level (i.e., temporal or parietal brain-PAD) than at the global level (i.e., “whole-brain” brain-PAD), as reported previously [32].

The biological mechanisms underlying advanced brain ageing in SZ remain elusive. These may involve interrelated biochemical abnormalities that accompany both schizophrenia and brain ageing, including increased inflammation and oxidative stress [10, 50]. Elevated levels of inflammatory markers (e.g., pro-inflammatory cytokines in blood and central nervous system) have been observed by multiple studies in individuals with schizophrenia [11, 51]. Moreover, there has been evidence for

peripheral inflammation markers being associated with structural brain abnormalities observed in schizophrenia and related outcomes (e.g., first episode psychosis), including but not limited to abnormal cortical thickness of the bilateral Broca’s area and temporal gyrus [52, 53], as well as with greater brain-PAD scores [54]. Abnormal levels of multiple oxidative stress markers have also been observed in SZ, both peripherally and in brain tissue [11, 55]. Oxidative stress and inflammation may reciprocally induce one another via a positive feedback loop in SZ, resulting in cellular damage [56].

Several methodological issues require further consideration. First, while a brain-PAD score (that is not equal to zero) is conceptually a prediction error that could reflect physiological deviations from normal ageing trajectories, it could be partly attributed to lack of model accuracy due to noise or unwanted variation [32, 57, 58]. Potential sources of unwanted variation include the use of multiple scanners and/or image acquisition protocols across (or within) participating cohorts that may affect the overall generalization performance of the brain age model applied here. To overcome this, in the primary analysis we included cohorts that had data on both cases and healthy controls collected in a similar, if not identical, manner (i.e., same site/scanner and/or image acquisition protocol) and have adjusted for multiple scanners where applicable. Nevertheless, while our model fit is lower than some previous studies, this would only increase noise, not a bias towards finding an effect of SZ on brain-PAD. Second, although our meta-analytic approach allowed us to combine information across multiple cohorts, the summary-level data reported here does not adequately capture the considerable inter-individual variability in brain-PAD among SZ patients, as has been documented elsewhere [32]. As some individuals with SZ are not characterised by a greater brain-PAD, it would be important to further investigate both clinical as well as biological, lifestyle and technical confounding factors that are linked to SZ and/or brain-PAD (e.g., inflammation, smoking, body mass index, imaging parameters) potentially accounting for inter-individual variability. Given that greater brain-PAD has been associated with poorer health outcomes, such as an increased mortality risk [23], understanding the extent to which various factors may contribute to brain ageing in SZ could help prioritize targets for interventions aiming to halt (or reverse) advanced brain ageing. Additionally, future studies should direct their efforts towards better characterization of region-specific brain patterns that could explain individual variation as well as differences in (global) brain-PAD within and between groups [59, 60]. Third, although the sample

size of our main analysis (SZ versus controls) was very large for a neuroimaging study, the size of patient groups categorised by status of antipsychotic use was relatively small (particularly that of unmedicated individuals with SZ) and cohort differences include the use of different assessments or processes to ascertain medication use and dose. This may have precluded detection of some associations. Lastly, given the cross-sectional design of the current study, we were not able to assess brain age acceleration more directly and how that may be related to clinical characteristics. Longitudinal large-scale studies are better suited for examining brain ageing per se [61] and for evaluating the clinical relevance of brain-PAD in SZ.

In conclusion, we found evidence of advanced brain ageing in SZ patients compared to healthy controls, which does not seem to be driven by the effects of medication or other clinical characteristics. Deviations from normative brain ageing trajectories in SZ may at least in part reflect increased risk of premature mortality and age-related chronic diseases commonly seen in SZ. Future longitudinal studies with more in-depth clinical characterization—including information on mental and somatic health outcomes—will be needed to elucidate whether a brain age predictor such as brain-PAD can provide a clinically useful biomarker to inform early prevention or intervention strategies in SZ.

#### CODE AVAILABILITY

The R code used to perform the individual-level analyses described above is openly available on GitHub: <https://github.com/ConstantinosConst/ENIGMA-SZ-BrainAge>. Further information can be requested from the corresponding author.

#### REFERENCES

- Hjorthøj C, Stürup AE, McGrath JJ, Nordentoft M. Years of potential life lost and life expectancy in schizophrenia: a systematic review and meta-analysis. *Lancet Psychiatry*. 2017;4:295–301.
- Olfson M, Gerhard T, Huang C, Crystal S, Stroup TS. Premature mortality among adults with schizophrenia in the United States. *JAMA Psychiatry*. 2015;72:1172–81.
- Weye N, Momen NC, Christensen MK, Iburg KM, Dalsgaard S, Laursen TM, et al. Association of specific mental disorders with premature mortality in the danish population using alternative measurement methods. *JAMA Netw Open*. 2020;3:e206646.
- Correll CU, Solmi M, Veronese N, Bortolato B, Rosson S, Santonastaso P, et al. Prevalence, incidence and mortality from cardiovascular disease in patients with pooled and specific severe mental illness: a large-scale meta-analysis of 3,211,768 patients and 113,383,368 controls. *World Psychiatry*. 2017;16:163–80.
- Mitchell AJ, Vancampfort D, Smeets K, van Winkel R, Yu W, De Hert M. Prevalence of metabolic syndrome and metabolic abnormalities in schizophrenia and related disorders—a systematic review and meta-analysis. *Schizophr Bull*. 2013;39:306–18.
- Smith DJ, Langan J, McLean G, Guthrie B, Mercer SW. Schizophrenia is associated with excess multiple physical-health comorbidities but low levels of recorded cardiovascular disease in primary care: cross-sectional study. *BMJ Open*. 2013;3:e002808.
- Dieset I, Andreassen OA, Haukvik UK. Somatic comorbidity in schizophrenia: some possible biological mechanisms across the life span. *Schizophr Bull*. 2016;42:1316–9.
- Kirkpatrick B, Messias E, Harvey PD, Fernandez-Egea E, Bowie CR. Is schizophrenia a syndrome of accelerated aging? *Schizophr Bull*. 2008;34:1024–32.
- Stroup TS, Olfson M, Huang C, Wall MM, Goldberg T, Devanand DP, et al. Age-specific prevalence and incidence of dementia diagnoses among older US adults with schizophrenia. *JAMA Psychiatry*. 2021;78:632–41.
- Kirkpatrick B, Kennedy BK. Accelerated aging in schizophrenia and related disorders: future research. *Schizophr Res*. 2018;196:4–8.
- Nguyen TT, Eyer LT, Jeste DV. Systemic biomarkers of accelerated aging in schizophrenia: a critical review and future directions. *Schizophr Bull*. 2018;44:398–408.
- Dietsche B, Kircher T, Falkenberg I. Structural brain changes in schizophrenia at different stages of the illness: a selective review of longitudinal magnetic resonance imaging studies. *Aust NZ J Psychiatry*. 2017;51:500–8.
- Kelly S, Jahanshad N, Zalesky A, Kochunov P, Agartz I, Alloza C, et al. Widespread white matter microstructural differences in schizophrenia across 4322 individuals: results from the ENIGMA Schizophrenia DTI Working Group. *Mol Psychiatry* 2018 235. 2017;23:1261–9.
- Olabi B, Ellison-Wright I, McIntosh AM, Wood SJ, Bullmore E, Lawrie SM. Are there progressive brain changes in schizophrenia? a meta-analysis of structural magnetic resonance imaging studies. *Biol Psychiatry*. 2011;70:88–96.
- Sun D, Stuart GW, Jenkinson M, Wood SJ, McGorry PD, Velakoulis D, et al. Brain surface contraction mapped in first-episode schizophrenia: a longitudinal magnetic resonance imaging study. *Mol Psychiatry* 2009 1410. 2008;14:976–86.
- Van Erp TGM, Hibar DP, Rasmussen JM, Glahn DC, Pearlson GD, Andreassen OA, et al. Subcortical brain volume abnormalities in 2028 individuals with schizophrenia and 2540 healthy controls via the ENIGMA consortium. *Mol Psychiatry*. 2016;21:547–53.
- van Erp TGM, Walton E, Hibar DP, Schmaal L, Jiang W, Glahn DC, et al. Cortical brain abnormalities in 4474 individuals with schizophrenia and 5098 control subjects via the Enhancing Neuro Imaging Genetics Through Meta Analysis (ENIGMA) Consortium. *Biol Psychiatry*. 2018;84:644–54.
- Vita A, De Peri L, Deste G, Sacchetti E. Progressive loss of cortical gray matter in schizophrenia: a meta-analysis and meta-regression of longitudinal MRI studies. *Transl Psychiatry*. 2012;2:e190.
- Cole JH, Franke K. Predicting age using neuroimaging: innovative brain ageing biomarkers. *Trends Neurosci*. 2017;40:681–90.
- Beck D, de Lange AMG, Pedersen ML, Alnaes D, Maximov II, Voldsbekk I, et al. Cardiometabolic risk factors associated with brain age and accelerate brain ageing. *Hum Brain Mapp*. <https://doi.org/10.1002/HBM.25680> 2021.
- Cole JH. Multimodality neuroimaging brain-age in UK biobank: relationship to biomedical, lifestyle, and cognitive factors. *Neurobiol Aging*. 2020;92:34–42.
- Cole JH, Marioni RE, Harris SE, Deary IJ. Brain age and other bodily 'ages': implications for neuropsychiatry. *Mol Psychiatry*. 2019;24:266–81.
- Cole JH, Ritchie SJ, Bastin ME, Valdés Hernández MC, Muñoz Maniega S, Royle N, et al. Brain age predicts mortality. *Mol Psychiatry* 2018 235. 2017;23:1385–92.
- Han LKM, Dinga R, Hahn T, Ching CRK, Eyer LT, Aftanas L, et al. Brain aging in major depressive disorder: results from the ENIGMA major depressive disorder working group. *Mol Psychiatry*. 2021;26:5124–39.
- Ning K, Zhao L, Matloff W, Sun F, Toga AW. Association of relative brain age with tobacco smoking, alcohol consumption, and genetic variants. *Sci Rep* 2020 101. 2020;10:1–10.
- Hajek T, Franke K, Kolenic M, Capkova J, Matejka M, Propper L, et al. Brain age in early stages of bipolar disorders or schizophrenia. *Schizophr Bull*. 2019;45:191–8.
- Koutsouleris N, Davatzikos C, Borgwardt S, Gaser C, Bottlender R, Frodl T, et al. Accelerated brain aging in schizophrenia and beyond: a neuroanatomical marker of psychiatric disorders. *Schizophr Bull*. 2014;40:1140–53.
- Nenadić I, Dietzek M, Langbein K, Sauer H, Gaser C. BrainAGE score indicates accelerated brain aging in schizophrenia, but not bipolar disorder. *Psychiatry Res — Neuroimaging*. 2017;266:86–89.
- Schnack HG, Van Haren NEM, Nieuwenhuis M, Pol HEH, Cahn W, Kahn RS. Accelerated brain aging in schizophrenia: a longitudinal pattern recognition study. *Am J Psychiatry*. 2016;173:607–16.
- Shahab S, Mulsant BH, Levesque ML, Calarco N, Nazeri A, Wheeler AL, et al. Brain structure, cognition, and brain age in schizophrenia, bipolar disorder, and healthy controls. *Neuropsychopharmacology*. 2019;44:898–906.
- Wang J, Kochunov P, Sampath H, Hatch KS, Ryan MC, Xue F, et al. White matter brain aging in relationship to schizophrenia and its cognitive deficit. *Schizophr Res*. 2021;230:9–16.
- Kaufmann T, van der Meer D, Doan NT, Schwarz E, Lund MJ, Agartz I, et al. Common brain disorders are associated with heritable patterns of apparent aging of the brain. *Nat Neurosci*. 2019;22:1617–23.
- Tønnesen S, Kaufmann T, Lange A-MG, de, Richard G, Doan NT, Alnaes D, et al. Brain age prediction reveals aberrant brain white matter in schizophrenia and bipolar disorder: a multisample diffusion tensor imaging study. *Biol Psychiatry Cogn Neurosci Neuroimaging*. 2020;5:1095–103.
- Fischl B. FreeSurfer. *Neuroimage*. 2012;62:774–81.
- Desikan RS, Ségonne F, Fischl B, Quinn BT, Dickerson BC, Blacker D, et al. An automated labeling system for subdividing the human cerebral cortex on MRI scans into gyral based regions of interest. *Neuroimage*. 2006;31:968–80.
- Pedregosa F, Michel V, Grisel O, Blondel M, Prettenhofer P, Weiss R, et al. Scikit-learn: Machine Learning in Python. 12. 2011.
- Le TT, Kuplicki RT, McKinney BA, Yeh H-W, Thompson WK, Paulus MP. A nonlinear simulation framework supports adjusting for age when analyzing BrainAGE. *Front Aging Neurosci*. 2018;10:317.
- Smith SM, Vidaurre D, Alfaro-Almagro F, Nichols TE, Miller KL. Estimation of brain age delta from brain imaging. *Neuroimage*. 2019;200:528–39.
- Viechtbauer W. Conducting meta-analyses in R with the metafor. *J Stat Softw*. 2010;36:1–48.
- Baecker L, Dafflon J, da Costa PF, Garcia-Dias R, Vieira S, Scarpazza C, et al. Brain age prediction: a comparison between machine learning models using region- and voxel-based morphometric data. *Hum Brain Mapp*. 2021;42:2332–46.

41. Lee WH, Antoniadou M, Schnack HG, Kahn RS, Frangou S. Brain age prediction in schizophrenia: does the choice of machine learning algorithm matter? *Psychiatry Res—Neuroimaging*. 2021;310:111270.
42. Ballester PL, Romano MT, de Azevedo Cardoso T, Hassel S, Strother SC, Kennedy SH, et al. Brain age in mood and psychotic disorders: a systematic review and meta-analysis. *Acta Psychiatr Scand*. <https://doi.org/10.1111/ACPS.13371> 2021.
43. Hibar DP, Westlye LT, Doan NT, Jahanshad N, Cheung JW, Ching CRK, et al. Cortical abnormalities in bipolar disorder: an MRI analysis of 6503 individuals from the ENIGMA Bipolar Disorder Working Group. *Mol Psychiatry*. 2018;23:932–42.
44. Hibar DP, Westlye LT, Van Erp TGM, Rasmussen J, Leonardo CD, Faskowitz J, et al. Subcortical volumetric abnormalities in bipolar disorder. *Mol Psychiatry*. 2016;21:1710–6.
45. Schmaal L, Veltman DJ, Van Erp TGM, Smann PG, Frodl T, Jahanshad N, et al. Subcortical brain alterations in major depressive disorder: findings from the ENIGMA Major Depressive Disorder working group. *Mol Psychiatry*. 2016;21:806–12.
46. Schmaal L, Hibar DP, Sämann PG, Hall GB, Baune BT, Jahanshad N, et al. Cortical abnormalities in adults and adolescents with major depression based on brain scans from 20 cohorts worldwide in the ENIGMA Major Depressive Disorder Working Group. *Mol Psychiatry*. 2017;22:900–9.
47. Vita A, De Peri L, Deste G, Barlati S, Sacchetti E. The effect of antipsychotic treatment on cortical gray matter changes in schizophrenia: does the class matter? A Meta-analysis and meta-regression of longitudinal magnetic resonance imaging studies. *Biol Psychiatry*. 2015;78:403–12.
48. Smieskova R, Fusar-Poli P, Allen P, Bendfeldt K, Stieglitz R, Drewe J, et al. The effects of antipsychotics on the brain: what have we learnt from structural imaging of schizophrenia?—A systematic review. *Curr Pharm Des*. 2009;15:2535–49.
49. McWhinney S, Kolenic M, Franke K, Fialova M, Knytl P, Matejka M, et al. Obesity as a risk factor for accelerated brain ageing in first-episode psychosis—a longitudinal study. *Schizophr Bull*. 2021;47:1772–81.
50. Mattson MP, Arumugam TV. Hallmarks of brain aging: adaptive and pathological modification by metabolic states. *Cell Metab*. 2018;27:1176–99.
51. Kirkpatrick B, Miller BJ. Inflammation and schizophrenia. *Schizophr Bull*. 2013;39:1174–9.
52. Miller BJ, Goldsmith DR. Inflammatory biomarkers in schizophrenia: Implications for heterogeneity and neurobiology. *Biomark Neuropsychiatry*. 2019;1:100006.
53. Wu D, Lv P, Li F, Zhang W, Fu G, Dai J, et al. Association of peripheral cytokine levels with cerebral structural abnormalities in schizophrenia. *Brain Res*. 2019;1724:146463.
54. Franke K, Gaser C, Manó B, Novak V. Advanced BrainAGE in older adults with type 2 diabetes mellitus. *Front Aging Neurosci*. 2013;5:90.
55. Yao JK, Leonard S, Reddy RD. Increased nitric oxide radicals in postmortem brain from patients with schizophrenia. *Schizophr Bull*. 2004;30:923–34.
56. Okusaga OO. Accelerated aging in schizophrenia patients: the potential role of oxidative stress. *Aging Dis*. 2014;5:256–62.
57. Butler ER, Chen A, Ramadan R, Le TT, Ruparel K, Moore TM, et al. Pitfalls in brain age analyses. *Hum Brain Mapp*. 2021;42:4092–101.
58. de Lange AMG, Anatórk M, Rokicki J, Han LKM, Franke K, Alnaes D, et al. Mind the gap: performance metric evaluation in brain-age prediction. *Hum Brain Mapp*. 2022;43:3113–29.
59. van der Velden BHM, Kuijff HJ, Gilhuijs KGA, Viergever MA. Explainable artificial intelligence (XAI) in deep learning-based medical image analysis. *Med Image Anal*. 2022;79:102470.
60. Popescu SG, Glocker B, Sharp DJ, Cole JH. Local Brain-Age: A U-Net model. *Front Aging Neurosci*. 2021;13:838.
61. Vidal-Pineiro D, Wang Y, Krogsrud SK, Amlien IK, Baaré WFC, Bartres-Faz D, et al. Individual variations in 'brain age' relate to early-life factors more than to longitudinal brain change. *Elife*. 2021;10:e69995.

## ACKNOWLEDGEMENTS

The ENIGMA Schizophrenia Working Group acknowledges the National Institutes of Health (NIH) Big Data to Knowledge (BD2K) award for foundational support and consortium development (Grant No. U54 EB020403 to PMT). For a complete list of ENIGMA-related grant support please see here: <http://enigma.ini.usc.edu/about-2/funding/>. The content of this manuscript is solely the responsibility of the authors and does not necessarily represent the official views of NIH. CC was supported by grant MR/N0137941/1 for the GW4 BIOMED Doctoral Training Partnership awarded to the Universities of Bath, Bristol, Cardiff and Exeter from the Medical Research Council (MRC)/ UK Research & Innovation (UKRI). JHC was supported by a UKRI Innovation Fellowship (MR/R024790/2). LE was supported by Desert-Pacific Mental Illness Research Education and Clinical Center, US, NIH grant R01MH083968-05. TH was funded by the German Research Foundation (DFG grants HA7070/2-2, HA7070/3,

HA7070/4 to TH). LH was supported by a Rubicon fellowship (grant number 452020227) provided by The Dutch Research Council (NWO). NJ and LS were supported by NIH grant R01 MH117601. NJ was also supported by NIH grants R01AG059874, R01MH11760. LS was also supported by a National Health and Medical Research Council (NHMRC) Career Development Fellowship (1140764) and a University of Melbourne Dame Kate Campbell fellowship. PMT was supported in part by NIH grant R01 MH116147. EW was supported by the European Union Horizon 2020 research and innovation programme (EarlyCause, grant number 848158). Acknowledgements for the various participating data contributors follow - ASRB: the Australian Schizophrenia Research Bank (ASRB) was supported by NHMRC (Enabling Grant, ID 386500), the Pratt Foundation, Ramsay Health Care, the Viertel Charitable Foundation and the Schizophrenia Research Institute. Chief Investigators for ASRB were Carr, V., Schall, U., Scott, R., Jablensky, A., Mowry, B., Michie, P., Catts, S., Henskens, F., Pantelis, C. We thank Loughland, C., the ASRB Manager, and acknowledge the help of Jason Bridge for ASRB database queries. CP was also supported by a NHMRC Senior Principal Research Fellowship (1105825), an NHMRC L3 Investigator Grant (1196508). CSW was funded by the NSW Ministry of Health, Office of Health and Medical Research and a recipient of a National Health and Medical Research Council (Australia) Principal Research Fellowship (PRF) (#1117079). CAMH: the datasets were generated and shared with support from the CAMH Foundation and the Canadian Institutes of Health Research. CASSI: this study was supported by NHMRC grant 568807 (awarded to CSW and TW). CSW was funded by the NSW Ministry of Health, Office of Health and Medical Research and a recipient of a NHMRC (Australia) Principal Research Fellowship (PRF) (#1117079). COBRE: the study and investigators were supported by NIH grants R01MH118695, R01MH121101, as well as National Science Foundation (NSF) grant 2112455 (awarded to VC). JT (senior author) was supported by NIH grant R01MH121246. EONCKS: all processing of contributed neuroimaging data was conducted on the Centre for High Performance Computing, Cape Town, South Africa. ESO: the study and investigators (AC, FS, DT) was funded by the Ministry of Health, Czech Republic - Conceptual Development of Research Organization (Institute for Clinical and Experimental Medicine - IKEM, IN 00023001), and Ministry of Health of the Czech Republic, grants nr. NU20-04-00393 and NU21-08-00432. FBIRN: The study was supported by National Institutes of Health grant numbers: NIH 1 U24 RR021992 (Function Biomedical Informatics Research Network), NIH 1 U24 RR025736 (Biomedical Informatics Research Network Coordinating). FBIRN data was processed by the UCI High Performance Computing cluster supported by Joseph Farran, Harry Mangalam, and Adam Brenner and the NCCR and the National Center for Advancing Translational Sciences. JT (senior author) was also supported by NIH grant R01MH121246. FIDMAG: this study was supported by Centro de Investigación Biomédica en Red de Salud Mental (CIBERSAM) and the Catalan Government, Generalitat de Catalunya (2017-SGR-1271 to EP-C from AGAUR). PFC was supported by a Sara Borrell contract (CD19/00149), funded by Instituto de Salud Carlos III, co-funded by the European Union (European Regional Development Fund/European Social Fund [ERDF/ESF], "Investing in your future"). FSLRome: the IRCCS Santa Lucia Foundation of Rome study (FSLRome) was partially supported by the Italian Ministry of Health (RC12-13-14-15A Grant) and by the European Commission ERA-Net NEURON joint transnational call 2010 (European Research Projects on Mental Disorders: NEUCONNECT). GROUP: This work was supported by the Geestkracht program of the Dutch Health Research Council (ZON-MW, grant number: 10-000-1002), and the European Community's Seventh Framework Program under grant agreement No. HEALTH-F2-2009-241909 (Project EU-GEI). Huilong: this study was funded by the National Natural Science Foundation of China (81761128021;31671145;81401115;81401133), Beijing Municipal Science & Technology Commission grant (Z141107002514016) and Beijing Natural Science Foundation (7162087, Beijing Municipal Administration of Hospitals Clinical medicine Development of special funding (XMLX201609; zylx201409). IGP: The Imaging Genetics in Psychosis (IGP) study was supported by NHMRC Project Grant APP630471, APP1051673, APP1081603 (awarded to MJG), and the Macquarie University's ARC Centre of Excellence in Cognition and its Disorders (CE110001021). MJG was supported by an Australian Research Council Future Fellowship (FT0991511; 2009-13) and a R.D. Wright Biomedical Career Development Award from the NHMRC (1061875; 2014-17). IMH: this study was supported by the National Healthcare Group, Singapore (SIG/05004; SIG/05028) and the Singapore Bioimaging Consortium (RP C009/06) research grants (awarded to KS). iRELATE: this study was supported by grants to GD from the European Research Council (ERC-2015-STG-677467) and Science Foundation Ireland (SFI-16/ERC/S/3787). JBNU: YC was supported by the Korea Health Technology R&D Project through the Korea Health Industry Development Institute (KHIDI), funded by the Ministry of Health & Welfare, Republic of Korea (grant no. HI18C2383). Madrid: this research was supported by the Spanish Ministry of Science and Innovation; Instituto de Salud Carlos III (grants SAM16PE07CP1, PI16/02012, and PI19/01024 awarded to CAra; PI17/01249 awarded JJ; and PI17/00481, JR19/00024 and PI20/00721 awarded to CMD-C), co-financed by ERDF Funds from the European Commission, "A way of making Europe", CIBERSAM; Madrid Regional Government (B2017/BMD-3740 AGES-CM-2 awarded to CAra), European Union Structural Funds; European Union Seventh Framework Program under grant agreements FP7-4-

HEALTH-2009-2.2.1-2-241909 (Project EU-GEI), FP7- HEALTH-2013-2.2.1-2-603196 (Project PSYSCAN) and FP7- HEALTH-2013-2.2.1-2-602478 (Project METSY) awarded to Cara; and European Union H2020 Program under the Innovative Medicines Initiative 2 Joint Undertaking (grant agreement No 115916, Project PRISM, and grant agreement No 777394, Project AIMS-2-TRIALS awarded to CÀra), Fundación Familia Alonso and Fundación Alicia Koplowitz. MCIC: this work was primarily supported by the Department of Energy (DE-FG02-99ER62764) and the Mind Research Network. VC was also supported by NSF (grant no. 2112455) and NIH (grant no. R01MH118695, R01MH121101). MPRC: support was received from NIH grants R01MH123163, R01EB015611, R01NS114628 (awarded to PK). PAFIP: this study has been funded by Instituto de Salud Carlos III through the project PI17/01056 (co-funded by ERDF/ESF "A way to make Europe"/"Investing in your future"). RSCZ: the study was supported by National Institutes of Health grant number: NIMH R21MH097196 to TGMvE. SCORE: this study was supported in part by grant 3232BO\_119382 from the Swiss National Science Foundation. We thank the FePsy (Frueherkennung von Psychosen; early detection of psychosis) Study Group from the University of Basel, Department of Psychiatry, Switzerland, for the recruitment of the study participants. The FePsy study was supported in part by grant No. SNF 3200-057216/1, ext./2, ext./3. SNUH: this research was supported by the Basic Science Research Program through the National Research Foundation of Korea (NRF) and by the KBRI Basic Research Program through the Korea Brain Research Institute, funded by the Ministry of Science & ICT, funded by the Ministry of Science & ICT (Grant no. 2020M3E5D9079910 and 21-BR-03-01 awarded to JSK; 2019R1C1C1002457 and 21-BR-03-01 awarded to MK). UNIBA: this study was supported by grant funding from the Italian Ministry of Health (PE-2011-02347951). PS was supported by a PhD studentship jointly funded by the NIHR-BRC at SLaM and the Department of Neuroimaging, King's College London. Zurich: this study was supported by the Swiss National Science Foundation (SNSF; grant no. 105314\_140351 and 10001CL\_169783 to SK). MK acknowledges funding from SNSF (grant no. P2SKP3\_178175).

## AUTHOR CONTRIBUTIONS

**Conceptualization:** EW, DD, CC. **Methodology:** EW, DD, CC, LS, LKM, JC, FP, LTE, JL, NJ, TH. **Software:** CC, EW, LS, LKM, VOGdIF, AST, DV. **Formal analysis:** CC, EW, YQ, YBK, MH, OB, MK, FG, CA, JJ, LH, DTG, VOGdIF, TGMvE, AST, FP, DV, JB. **Investigation:** EW, DD, CC, AP, YQ, TW, JSK, MK, YBK, MH, KS, MG, OB, CW, TGMvE, NB, SDP. **Resources:** AB, LA, GP, FAH, MS, YQ, PS, US, JT, TW, SH, PH, JSK, MK, KRM, RS, EPC, SS, PFC, AGP, AS, SE, KS, DT, VC, LS, MG, FS, MK, SK, AS, CA, JJ, CMD, CA, YCH, WSK, Tva, LH, GD, CW, DTG, JVB, RAA, BCF, TGMvE, RJS, PER, IL, VK, SM, GS, JE, SDP, JB, PM, BM, SB, SC, AV, VC, JB, CP. **Data Curation:** EW, CC, AB, LA, GP, FAH, EJ, MS, YQ, PS, US, JT, TW, MK, YBK, MH, KRM, RS, EPC, SS, PFC, AGP, AS, SE, KS, DT, MG, FS, MK, FG, AS, CA, JJ, CMD, CA, YCH, WSK, Tva, LH, GD, DM, CW, DTG, VOGdIF, TGMvE, RJS, PER, AST, SM, FP, NB, DV, DC, SDP, JB, BM, VC, CP. **Writing - Original Draft:** CC, EW, DD. **Writing - Review & Editing:** CC, DD, EW, AB, EJ, LA, GP, MS, FAH, PK, AP, YQ, PS, US, JT, PT, SH, PH, JSK, MK, YBK, MH, KRM, RS, EPC, SS, PFC, AGP, AS, SE, KS, DT, LS, MG, FS, JC, MK, SK, FG, AS, CA, JJ, CMD, CA, YCH, WSK, Tva, LH, GD, LKM, DTG, TGMvE, RJS, PER, IL, AST, SM, GS, NB,

DC, SDP, RB, JB, BM, SIT, LTE, JL, NJ, SB, TH, VC, CP. **Visualization:** CC, EW, SIT. **Supervision:** EW, DD, AP, TW, JSK, MK, JVB, RAA, BCF, IL, VK, GS, SC, AV, JB. **Project administration:** CC, DD, EW, TW, CW, IL, GS, NB, SC, AV, JB.

## COMPETING INTERESTS

CA has been a consultant to or has received honoraria or grants from Acadia, Angelini, Boehringer, Gedeon Richter, Janssen Cilag, Lundbeck, Minerva, Otsuka, Pfizer, Roche, Sage, Servier, Shire, Schering Plough, Sumitomo Dainippon Pharma, Sunovion and Takeda. CMD-C has received honoraria from Exeltis and Angelini. NJ and PMT received a research grant from Biogen, Inc. (Boston, USA) for research unrelated to this manuscript. SK received royalties for cognitive test and training software from Schuhfried. The remaining authors report no biomedical financial interests or potential conflicts of interest.

## ADDITIONAL INFORMATION

**Supplementary information** The online version contains supplementary material available at <https://doi.org/10.1038/s41380-022-01897-w>.

**Correspondence** and requests for materials should be addressed to Esther Walton.

**Reprints and permission information** is available at <http://www.nature.com/reprints>

**Publisher's note** Springer Nature remains neutral with regard to jurisdictional claims in published maps and institutional affiliations.



**Open Access** This article is licensed under a Creative Commons

Attribution 4.0 International License, which permits use, sharing, adaptation, distribution and reproduction in any medium or format, as long as you give appropriate credit to the original author(s) and the source, provide a link to the Creative Commons license, and indicate if changes were made. The images or other third party material in this article are included in the article's Creative Commons license, unless indicated otherwise in a credit line to the material. If material is not included in the article's Creative Commons license and your intended use is not permitted by statutory regulation or exceeds the permitted use, you will need to obtain permission directly from the copyright holder. To view a copy of this license, visit <http://creativecommons.org/licenses/by/4.0/>.

© The Author(s) 2022

<sup>1</sup>Department of Psychology, University of Bath, Bath, UK. <sup>2</sup>Centre for Youth Mental Health, The University of Melbourne, Melbourne, VIC, Australia. <sup>3</sup>Orygen, Parkville, VIC, Australia. <sup>4</sup>Department of Psychiatry, Amsterdam University Medical Centers, Vrije Universiteit and GGZ inGeest, Amsterdam Neuroscience, Amsterdam, The Netherlands. <sup>5</sup>Department of Child and Adolescent Psychiatry, Institute of Psychiatry and Mental Health, Hospital General Universitario Gregorio Marañón, IISGM, CIBERSAM, School of Medicine, Universidad Complutense, Madrid, Spain. <sup>6</sup>Centro de Investigación Biomédica en Red de Salud Mental (CIBERSAM), Instituto de Salud Carlos III, Spain. <sup>7</sup>Department of Translational Biomedicine and Neuroscience, University of Bari Aldo Moro, Bari, Italy. <sup>8</sup>Department of Psychiatry and Psychotherapy, Ludwig-Maximilians-Universität—Munich, Munich, Germany. <sup>9</sup>Department of Psychiatry, Marqués de Valdecilla University Hospital, IDIVAL, School of Medicine, University of Cantabria, Santander, Spain. <sup>10</sup>Laboratory of Neuropsychiatry, IRCCS Santa Lucia Foundation, Rome, Italy. <sup>11</sup>Department of Psychiatry (UPK), University of Basel, Basel, Switzerland. <sup>12</sup>Department of Psychiatry, Psychosomatics and Psychotherapy, University of Lübeck, Lübeck, Germany. <sup>13</sup>School of Psychiatry, University of New South Wales, Sydney, NSW, Australia. <sup>14</sup>Neuroscience Research Australia, Sydney, NSW, Australia. <sup>15</sup>Department of Psychiatry, University of New Mexico, Albuquerque, NM, USA. <sup>16</sup>Department of Psychiatry, Psychiatric University Hospital (UPK), University of Basel, Basel, Switzerland. <sup>17</sup>Division of Addiction Medicine, Centre Hospitalier des Quatre Villes, St. Cloud, France. <sup>18</sup>Tri-institutional Center for Translational Research in Neuroimaging and Data Science (TReNDS), Georgia State, Georgia Tech, Emory, Atlanta, GA, USA. <sup>19</sup>Department of Psychiatry, Monash University, Clayton, VIC, Australia. <sup>20</sup>School of Medicine, University of Queensland, Herston, QLD, Australia. <sup>21</sup>Department of Psychiatry, Jeonbuk National University, Medical School, Jeonju, Korea. <sup>22</sup>Department of Psychiatry, Jeonbuk National University Hospital, Jeonju, Korea. <sup>23</sup>Research Institute of Clinical Medicine of Jeonbuk National University-Biomedical Research Institute of Jeonbuk National University Hospital, Jeonju, Korea. <sup>24</sup>Hospital Universitario Virgen del Rocío, IBI5-CSIC, Universidad de Sevilla, Sevilla, Spain. <sup>25</sup>Centre for Neuroimaging and Cognitive Genomics (NICOG), School of Psychology, National University of Ireland Galway, Galway, Ireland. <sup>26</sup>Department of Psychiatry, Stellenbosch University, Cape Town, South Africa. <sup>27</sup>Stellenbosch University Genomics of Brain Disorders Research Unit, South African Medical Research Council, Cape Town, South Africa. <sup>28</sup>Department of Psychology, Georgia State University, Atlanta, GA, USA. <sup>29</sup>Translational Developmental Neuroscience Section, Division of Psychological and Social Medicine and Developmental Neurosciences, Faculty of Medicine, TU Dresden, Germany. <sup>30</sup>Department of Psychiatry, University of California San Diego, San Diego, CA, USA. <sup>31</sup>Desert-Pacific Mental Illness Research Education and Clinical Center, VA San Diego Healthcare System, San Diego, CA, USA. <sup>32</sup>FIDMAG Germanes Hospitalàries Research Foundation, Barcelona, Catalonia, Spain. <sup>33</sup>Department of Psychiatry, Psychotherapy and Psychosomatics, Psychiatric Hospital, University of Zurich, Zurich, Switzerland. <sup>34</sup>Hospital Benito Menni CASM, Sant Boi de Llobregat, Catalonia, Spain. <sup>35</sup>Department of Brain and Cognitive Sciences, Seoul National University College of Natural Sciences, Seoul, South Korea. <sup>36</sup>Institute for Translational Psychiatry, University of Münster, Münster, Germany. <sup>37</sup>School of Medicine & Public Health, The University of Newcastle, Newcastle, NSW, Australia. <sup>38</sup>Priority Research Centre for Health Behaviour, The University of Newcastle, Newcastle, NSW, Australia. <sup>39</sup>Hunter Medical Research Institute, Newcastle, NSW, Australia. <sup>40</sup>Psychiatric University Hospital Zurich, Zurich, Switzerland. <sup>41</sup>Department of Experimental Psychopathology and Psychotherapy, University of Zurich, Zurich, Switzerland. <sup>42</sup>Imaging Genetics Center, Stevens Neuroimaging and Informatics Institute, Keck School of Medicine, University of Southern California, Marina del Rey, CA, USA. <sup>43</sup>Division of Adult Psychiatry, Department of Psychiatry, Geneva University Hospitals, Geneva,

Switzerland. <sup>44</sup>Mental Health Research Center, Moscow, Russia. <sup>45</sup>Department of Psychiatry, Seoul National University College of Medicine, Seoul, South Korea. <sup>46</sup>Department of Neuropsychiatry, Seoul National University Hospital, Seoul, South Korea. <sup>47</sup>McConnell Brain Imaging Centre, Montreal Neurological Institute and Hospital, McGill University, Montreal, QC, Canada. <sup>48</sup>Maryland Psychiatric Research Center, Department of Psychiatry, University of Maryland School of Medicine, Baltimore, MD, USA. <sup>49</sup>Department of Computer Science, Georgia State University, Atlanta, GA, USA. <sup>50</sup>Neuroscience Institute, Georgia State University, Atlanta, GA, USA. <sup>51</sup>School of Psychological Sciences, University of Newcastle, Callaghan, NSW, Australia. <sup>52</sup>Department of Neurosurgery, School of Mental Health and Neuroscience, EURON, Maastricht University Medical Centre, Maastricht, The Netherlands. <sup>53</sup>Department of Psychology, School of Business, National College of Ireland, Dublin, Ireland. <sup>54</sup>Queensland Brain Institute, The University of Queensland, Brisbane, QLD, Australia. <sup>55</sup>The Queensland Centre for Mental Health Research, The University of Queensland, Brisbane, QLD, Australia. <sup>56</sup>Melbourne Neuropsychiatry Centre, Department of Psychiatry, The University of Melbourne & Melbourne Health, Carlton South, VIC, Australia. <sup>57</sup>Florey Institute of Neuroscience & Mental Health, Parkville, VIC, Australia. <sup>58</sup>Department of Psychiatry and Human Behavior, University of California, Irvine, CA, USA. <sup>59</sup>School of Psychology, University of New South Wales, Sydney, NSW, Australia. <sup>60</sup>Priority Centre for Brain & Mental Health Research, The University of Newcastle, Newcastle, NSW, Australia. <sup>61</sup>School of Biomedical Sciences and Pharmacy, University of Newcastle, Newcastle, NSW, Australia. <sup>62</sup>Department of Neuroimaging, Institute of Psychiatry, Psychology and Neuroscience, King's College London, London, UK. <sup>63</sup>West Region, Institute of Mental Health, Singapore, Singapore. <sup>64</sup>Yong Loo Lin School of Medicine, National University of Singapore, Singapore, Singapore. <sup>65</sup>Lee Kong Chian School of Medicine, Nanyang Technological University, Singapore, Singapore. <sup>66</sup>National Institute of Mental Health, Klecany, Czech Republic. <sup>67</sup>MR unit, Department of Diagnostic and Interventional Radiology, Institute for Clinical and Experimental Medicine, Prague, Czech Republic. <sup>68</sup>Department of Psychiatry and Behavioral Sciences, Baylor College of Medicine, Houston, TX, USA. <sup>69</sup>Third Faculty of Medicine, Charles University, Prague, Czech Republic. <sup>70</sup>Institute of Computer Science, Czech Academy of Sciences, Prague, Czech Republic. <sup>71</sup>Faculty of Electrical Engineering, Czech Technical University in Prague, Prague, Czech Republic. <sup>72</sup>Department of Radiology, Marqués de Valdecilla University Hospital, Valdecilla Biomedical Research Institute IDIVAL, Santander, Spain. <sup>73</sup>Advanced Computation and e-Science, Instituto de Física de Cantabria CSIC, Santander, Spain. <sup>74</sup>Department of Psychiatry and Neuropsychology, Maastricht University, Maastricht, The Netherlands. <sup>75</sup>Campbell Family Mental Health Research Institute, CAMH, Toronto, Canada. <sup>76</sup>Department of Psychiatry, University of Toronto, Toronto, ON, Canada. <sup>77</sup>Department of Neuroscience and Physiology, SUNY Upstate Medical University, Syracuse, NY, USA. <sup>78</sup>Clinical Translational Neuroscience Laboratory, Department of Psychiatry and Human Behavior, University of California Irvine, Irvine, CA, USA. <sup>79</sup>Center for the Neurobiology of Learning and Memory, University of California, Irvine, CA, USA. <sup>80</sup>Centre for Medical Image Computing, Department of Computer Science, University College London, London, UK. <sup>81</sup>Dementia Research Centre, Queen Square, Institute of Neurology, University College London, London, UK. <sup>82</sup>Department of Psychology, School of Arts and Social Sciences, City, University of London, London, UK. <sup>83</sup>These authors contributed equally: Danai Dima, Esther Walton. \*A list of authors and their affiliations appears at the end of the paper. ✉email: E.Walton@bath.ac.uk

## ENIGMA SCHIZOPHRENIA CONSORTIUM

Constantinos Constantinides<sup>1</sup>, Laura K. M. Han<sup>2,3,4</sup>, Clara Alloza<sup>5,6</sup>, Linda Antonella Antonucci<sup>7,8</sup>, Celso Arango<sup>5,6</sup>, Rosa Ayesa-Arriola<sup>6,9</sup>, Nerisa Banaj<sup>10</sup>, Alessandro Bertolino<sup>7</sup>, Stefan Borgwardt<sup>11,12</sup>, Jason Bruggemann<sup>13,14</sup>, Juan Bustillo<sup>15</sup>, Oleg Bykhovski<sup>16,17</sup>, Vince Calhoun<sup>18</sup>, Vaughan Carr<sup>13,14,19</sup>, Stanley Catts<sup>20</sup>, Young-Chul Chung<sup>21,22,23</sup>, Benedicto Crespo-Facorro<sup>6,24</sup>, Covadonga M. Díaz-Caneja<sup>5,6</sup>, Gary Donohoe<sup>25</sup>, Stefan Du Plessis<sup>26,27</sup>, Jesse Edmond<sup>28</sup>, Stefan Ehrlich<sup>29</sup>, Robin Emsley<sup>26</sup>, Lisa T. Eyley<sup>30,31</sup>, Paola Fuentes-Claramonte<sup>6,32</sup>, Foivos Georgiadis<sup>33</sup>, Melissa Green<sup>13,14</sup>, Amalia Guerrero-Pedraza<sup>32,34</sup>, Minji Ha<sup>35</sup>, Tim Hahn<sup>36</sup>, Frans A. Henskens<sup>37,38,39</sup>, Laurena Holleran<sup>25</sup>, Stephanie Homan<sup>40,41</sup>, Philipp Homan<sup>40</sup>, Neda Jahanshad<sup>42</sup>, Joost Janssen<sup>5,6</sup>, Ellen Ji<sup>40</sup>, Stefan Kaiser<sup>43</sup>, Vasily Kaleda<sup>44</sup>, Minah Kim<sup>45,46</sup>, Woo-Sung Kim<sup>21,23</sup>, Matthias Kirschner<sup>33,43,47</sup>, Peter Kochunov<sup>48</sup>, Yoo Bin Kwak<sup>35</sup>, Jun Soo Kwon<sup>35,45,46</sup>, Irina Lebedeva<sup>44</sup>, Jingyu Liu<sup>49,50</sup>, Patricia Mitchie<sup>39,51</sup>, Stijn Michielse<sup>52</sup>, David Mothersill<sup>25,53</sup>, Bryan Mowry<sup>54,55</sup>, Victor Ortiz-García de la Foz<sup>6,9</sup>, Christos Pantelis<sup>56,57</sup>, Giulio Pergola<sup>7</sup>, Fabrizio Piras<sup>10</sup>, Edith Pomarol-Clotet<sup>6,32</sup>, Adrian Preda<sup>58</sup>, Yann Quidé<sup>13,14,59</sup>, Paul E. Rasser<sup>39,60</sup>, Kelly Rootes-Murphy<sup>18,28</sup>, Raymond Salvador<sup>6,32</sup>, Marina Sangiuliano<sup>7</sup>, Salvador Sarró<sup>6,32</sup>, Ulrich Schall<sup>39,60</sup>, André Schmidt<sup>11</sup>, Rodney J. Scott<sup>61</sup>, Pierluigi Selvaggi<sup>7,62</sup>, Kang Sim<sup>63,64,65</sup>, Antonin Skoch<sup>66,67</sup>, Gianfranco Spalletta<sup>10,68</sup>, Filip Spaniel<sup>66,69</sup>, Sophia I. Thomopoulos<sup>42</sup>, David Tomecek<sup>66,70,71</sup>, Alexander S. Tomyshev<sup>44</sup>, Diana Tordesillas-Gutiérrez<sup>72,73</sup>, Therese van Amelsvoort<sup>74</sup>, Javier Vázquez-Bourgon<sup>6,9</sup>, Daniela Vecchio<sup>10</sup>, Aristotle Voineskos<sup>75,76</sup>, Cynthia S. Weickert<sup>13,14,77</sup>, Thomas Weickert<sup>13,14,77</sup>, Paul M. Thompson<sup>42</sup>, Lianne Schmaal<sup>2,3</sup>, Theo G. M. van Erp<sup>78,79</sup>, Jessica Turner<sup>28,50</sup>, James H. Cole<sup>80,81</sup>, Danai Dima<sup>62,82,83</sup> and Esther Walton<sup>1,83</sup> ✉