



Minerva Access is the Institutional Repository of The University of Melbourne

Author/s:

Beudel, M;Little, S;Pogosyan, A;Ashkan, K;Foltynie, T;Limousin, P;Zrinzo, L;Hariz, M;Bogdanovic, M;Cheeran, B;Green, AL;Aziz, T;Thevathasan, W;Brown, P

Title:

Tremor reduction by deep brain stimulation is associated with gamma power suppression in Parkinson's disease

Date:

2015-07-01

Citation:

Beudel, M., Little, S., Pogosyan, A., Ashkan, K., Foltynie, T., Limousin, P., Zrinzo, L., Hariz, M., Bogdanovic, M., Cheeran, B., Green, A. L., Aziz, T., Thevathasan, W. & Brown, P. (2015). Tremor reduction by deep brain stimulation is associated with gamma power suppression in Parkinson's disease. *Neuromodulation*, 18 (5), pp.349-354. <https://doi.org/10.1111/ner.12297>.

Persistent Link:

<https://hdl.handle.net/11343/260391>

License:

[CC BY](#)

# Tremor Reduction by Deep Brain Stimulation Is Associated With Gamma Power Suppression in Parkinson's Disease

Martijn Beudel, MD, PhD\*<sup>1</sup>; Simon Little, MD, PhD\*<sup>1</sup>; Alek Pogosyan, PhD\*;  
Keyoumars Ashkan, MD<sup>‡</sup>; Thomas Foltynie, MD, PhD<sup>§</sup>; Patricia Limousin, MD,  
PhD<sup>§</sup>; Ludvic Zrinzo, MD, PhD<sup>§</sup>; Marwan Hariz, MD, PhD<sup>§</sup>; Marko Bogdanovic,  
MD\*;  
Binith Cheeran, MD, PhD\*;  
Alexander L. Green, MD\*;  
Tipu Aziz, MD\*;  
Wesley Thevathasan, MD, PhD\*<sup>1\*\*</sup>; Peter Brown, MD\*

**Objectives:** Rest tremor is a cardinal symptom of Parkinson's disease (PD), and is readily suppressed by deep brain stimulation (DBS) of the subthalamic nucleus (STN). The therapeutic effect of the latter on bradykinesia and rigidity has been associated with the suppression of exaggerated beta (13–30 Hz) band synchronization in the vicinity of the stimulating electrode, but there is no correlation between beta suppression and tremor amplitude. In the present study, we investigate whether tremor suppression is related to suppression of activities at other frequencies.

**Materials and Methods:** We recorded hand tremor and contralateral local field potential (LFP) activity from DBS electrodes during stimulation of the STN in 15 hemispheres in 11 patients with PD. DBS was applied with increasing voltages starting at 0.5 V until tremor suppression was achieved or until 4.5 V was reached.

**Results:** Tremor was reduced to  $48.9\% \pm 10.9\%$  of that without DBS once stimulation reached 2.5–3 V ( $t_{14} = -4.667$ ,  $p < 0.001$ ). There was a parallel suppression of low gamma (31–45 Hz) power to  $92.5\% \pm 3\%$  ( $t_{14} = -2.348$ ,  $p = 0.034$ ). This was not seen over a band containing tremor frequencies and their harmonic (4–12 Hz), or over the beta band. Moreover, low gamma power correlated with tremor severity (mean  $r = 0.43 \pm 0.14$ ,  $p = 0.008$ ) within subjects. This was not the case for LFP power in the other two bands.

**Conclusions:** Our findings support a relationship between low gamma oscillations and PD tremor, and reinforce the principle that the subthalamic LFP is a rich signal that may contain information about the severity of multiple different Parkinsonian features.

**Keywords:** Deep brain stimulation, mechanisms of action, Parkinson's disease, subthalamic nucleus, tremor

**Conflict of Interest:** The authors report no conflicts of interest.

## INTRODUCTION

Resting tremor is, in conjunction with bradykinesia, rigidity, and postural instability, one of the four cardinal symptoms of Parkin-

son's disease (PD) (1). Rest tremor affects ~70% of patients and occurs at 4 to 6 Hz (2). Although the pathological hallmark of PD is well established, namely progressive degeneration of midbrain dopaminergic neurons and their projections to the basal ganglia, and the striatum in particular (3), it is not clear how this relates to

For more information on author guidelines, an explanation of our peer review process, and conflict of interest informed consent policies, please go to <http://www.wiley.com/bw/submit.asp?ref=1094-7159&site=1>

<sup>1</sup> Joint first authors.

**Funding Statement:** This work was funded by the Medical Research Council, Rosetrees Trust and National Institute for Health Research (NIHR) Oxford Biomedical Research Centre. The UCL Unit of Functional Neurosurgery is supported by The Parkinson Appeal UK, and the Monument trust. WT is supported by the National Health and Medical Research Council (Australia) and The Brain Foundation (Australia). The views expressed are those of the authors and not necessarily those of the NHS, the Department of Health or any funding bodies. The work was partly carried out in the NIHR Cognitive Health Clinical Research Facility, Oxford. This is an open access article under the terms of the Creative Commons Attribution License, which permits use, distribution and reproduction in any medium, provided the original work is properly cited. The license statement for this article was changed on 17 July 2015 after original online publication.

Address correspondence to: Peter Brown, MD, Department of Clinical Neurology, Level 1, West Wing, John Radcliffe Hospital, OX3 9DU, UK. Email: [peter.brown@ndcn.ox.ac.uk](mailto:peter.brown@ndcn.ox.ac.uk)

\* Nuffield Department of Clinical Neurosciences, John Radcliffe Hospital, University of Oxford, Oxford, UK;

<sup>†</sup> Department of Neurology, University Medical Centre Groningen, University of Groningen, Groningen, The Netherlands;

<sup>‡</sup> Department of Neurosurgery, Kings College Hospital, Kings College London, London, UK;

<sup>§</sup> Unit of Functional Neurosurgery, Sobell Department of Motor Neuroscience & Movement Disorders, UCL Institute of Neurology, Queen Square, London, UK;

<sup>¶</sup> Melbourne Brain Centre, Department of Medicine, Royal Melbourne Hospital, University of Melbourne, Melbourne, Victoria, Australia; and

\*\* The Bionics Institute, Melbourne, Victoria, Australia

resting tremor. Recent analyses suggest that resting tremor may have a distinct underlying pathophysiology to that of bradykinesia and rigidity (4). This is in line with earlier findings indicating different pathological changes in tremor dominant and akinetic-rigid PD patients (5). The dichotomy is further emphasized by the finding that the suppression of beta power in the subthalamic nucleus (STN) upon treatment with levodopa or deep brain stimulation (DBS) correlates with improvements in bradykinesia and rigidity, but not with those in tremor (6–9). In contrast, depth recordings in PD point to an association between low gamma oscillations in the STN and tremor severity (10). The question we address here is whether changes in low gamma activity correlate with tremor suppression during DBS. A positive outcome would strengthen the argument that the level of gamma oscillations in the STN might be related to tremor.

## MATERIALS AND METHODS

### Patients and Recordings

We studied 11 patients (four women) with advanced idiopathic PD undergoing DBS electrode implantation in the STN (Table 1). This was a multicenter study in which patients were recruited in either Oxford (John Radcliffe Hospital) or London (National Hospital for Neurology and Neurosurgery or Kings' College Hospital); centers that have previously successfully pooled electrophysiological data (10–13). All patients gave their informed written consent for the study, which was approved by the local ethics committee. All patients had tremor pre- and postsurgery, but were not necessarily tremor dominant. Patients underwent surgery in a two-stage procedure with bilateral quadripolar electrodes (model 3389, Medtronic Neurologic Division, Minneapolis, MN, USA). The electrode placement and stimulator implantation were separated by one week, as previously described (14). All testing was performed two to six days after electrode implantation.

We recorded bipolar local field potential (LFP) activity from the STN electrode contacts after overnight withdrawal of anti-parkinsonian medication. In subjects with bilateral upper limb tremor, bilateral recordings were performed. For unilateral upper limb tremor, only the hemisphere contralateral to the affected side was recorded. In all, we recorded 15 hemispheres (including four bilateral studies). Tremor was also recorded using a tri-axial accelerometer (Twente Medical Systems International, Oldenzaal, The Netherlands) taped to the dorsal surface of the hand while patients sat with the hand comfortably on their lap in a semi-pronated position.

To overcome stimulation artifacts, LFP recordings were made through a single-channel, isolated, two-stage, high-gain (100 dB) amplifier with narrow pass band to record bipolar LFP signals from electrode contacts 0 and 2 or 1 and 3 while the contact in the middle (contact 1 or contact 2, respectively) was stimulated. Rossi et al. initially reported this approach (15). It has been subsequently further developed, extensively tested and applied (16). Supplementary fig. S2A in the latter reference demonstrates that the amplifier pass band was relatively flat between 5 and 45 Hz, with  $\leq 20\%$  signal amplitude fall off at the margins of this pass band. Bipolar recordings were made from the contact pair (0–2 or 1–3) exhibiting the highest beta amplitude and were determined for each hemisphere independently in the unstimulated OFF-medication state. We recorded from the contact pair that afforded the highest beta power as this activity is reported to originate in the dorsal 'motor' STN (7,17). Tremor and LFP data were sampled at 2048 Hz and recorded through a 1401 A-D converter (Cambridge Electronic Designs,

**Table 1.** Clinical and Stimulation Details of Patients.

	Patient 1	Patient 2	Patient 3	Patient 4	Patient 5	Patient 6	Patient 7	Patient 8	Patient 9	Patient 10	Patient 11	Mean ± SEM
Age (years)	59	59	48	54	62	78	66	61	51	52	70	60 ± 2.7
Disease duration (years)	14	16	20	9	9	5	6	13	11	8	13	11.2 ± 1.3
UPDRS off-drugs	59	42	56	19	46	29	32	33	38	40	45	39.9 ± 3.5
UPDRS on-drugs	19	10	33	6	16	26	4	12	13	11	35	16.8 ± 3.1
Surgery location	OX	OX	OX	OX	OX	UCL	OX	UCL	UCL	UCL	KC	—
Initial symptom	Tremor	Tremor	Rigidity	Tremor	Rigidity	Tremor	Tremor	Tremor	Tremor	Tremor	Tremor	—
Primary DBS indication	Tremor	Tremor	Off-periods	Off-periods	Off-periods	Tremor	Off-periods	Tremor	Off-periods	Off-periods	Tremor	—
Preoperative drugs	Levodopa, Pramipexole	Levodopa, Amantadine, Cabergoline	Levodopa, Tolcapone	Levodopa, Entacapone, Pramipexole, Selegiline	Levodopa, Tolcapone	Levodopa, Entacapone	Levodopa, Pramipexole	Levodopa, Ropinirole, Rasagiline, Amantadine	Levodopa, Entacapone, Rotigotine	Levodopa, Rotigotine	Levodopa, Rotigotine	—
LED (mg/day)	1080	1050	700	1700	800	1200	1315	1715	1573	620	1140	1172 ± 114
Recorded hemisphere(s)	L/R	L	R	L/R	L/R	L	L	R	L	L/R	R	—
50% tremor suppression voltage	1.5/0.5	1	3.0	1/2.5	3/3.5	3.5	3.5	2.5	2.5	1.5	2	2.3 ± 0.3

Fifty percent tremor suppression voltages indicate the stimulation voltage at which tremor was reduced to 50% of its original amplitude.

DBS, deep brain stimulation; KC, King's College; L, left; LED, levodopa equivalent dose; OX, Oxford; R, right; SEM, standard error of the mean; UCL, University College London; UPDRS, Unified Parkinson's Disease Rating Scale Part III (motor).

Cambridge, UK) onto a personal computer running Spike2 software (Cambridge Electronic Designs). Stimulation was performed in a monopolar fashion through the contact (1 or 2) between the two recording contacts. Stimulation was applied unilaterally at 130 Hz with a pulse width of 90  $\mu$ sec using a DualStim external stimulator (Medtronic Neurologic Division). Stimulation started at 0.5 V and was increased in 0.5 V increments at 100 s intervals until either complete tremor suppression was achieved or 4.5 V was reached.

### Data Analysis

After visual inspection, LFPs and tri-axial accelerometer signals were analyzed offline using custom-written scripts in MATLAB (version 7.10; MathWorks, Natick, MA, USA). The accelerometer axis that recorded the greatest tremor amplitude was selected for further analysis. Both the LFP and selected accelerometer data were divided into epochs of 100 sec in which each epoch represented stimulation with a certain fixed voltage (0–max 4.5 V). The amplitudes of both the tremor signal and the LFP were calculated using a Morlet wavelet transformation. For the tremor signal, this was centered on the peak frequency  $\pm 1$  Hz, and for the LFP this was calculated for all frequencies between 1 and 45 Hz before being averaged across the bands of interest. The amplitudes for all points were then averaged over each stimulation block to give a single value of amplitude for the tremor and LFP in each frequency band for each level of DBS stimulation. These data were then taken forward for further analysis. Spectral decomposition with a continuous wavelet transform was performed because of its efficient time frequency resolution and lack of assumptions regarding stationarity (18,19).

The three contiguous frequency ranges were selected as: 4–12 Hz, 13–30 Hz, and 31–45 Hz. The 4–12 Hz range was chosen to correspond to tremor frequency and its harmonic, as both have been identified in brain recordings of tremulous patients (20,21). The 13–30 Hz range was chosen to correspond to the beta activity which is regularly reported in STN recordings (6,9), and the 31–45 Hz range selected to sample low gamma activity (up to the limit of the low pass filter), as changes in this approximate frequency band have been previously implicated in PD rest tremor (22).

For group analyses, accelerometer and LFP data in the different spectra were normalized to the initial value without stimulation (0 V) and expressed as a percentage of the initial value. Data were described using means and standard error of means (SEM), and normality was confirmed using the Kolmogorov–Smirnov test ( $p > 0.05$ ).

Changes in tremor amplitude and LFP band power were assessed in separate repeated measures ANOVAs during the 0.5–1 V, 1.5–2 V, and 2.5–3 V ranges of stimulation and Bonferroni correction applied. The unstimulated baseline was not used as, with normalization, this had a value of 1. Where more than one value was available for each hemisphere in a given stimulation range (e.g., 0.5 and 1 V), these were averaged. In one subject, tremor was totally suppressed at 2.0 V and stimulation therefore not performed at higher intensities. Accordingly, in this subject, values for 1.5–2 V were conservatively repeated for 2.5–3 V. Where Greenhouse–Geisser corrections were applied, corrected degrees of freedom are cited. To examine the relationship between tremor amplitude and LFP band power within hemispheres, correlation analyses were performed using Spearman's correlation. Correlation coefficients were normally distributed and their difference from zero tested using a one-sample *t*-test.

## RESULTS

### Suppression of Tremor and LFP Activities

Figure 1 shows a representative example of changes in tremor and STN LFP during stimulation at incrementally increased voltages. Note that both tremor amplitude and low gamma (31–45 Hz) LFP activity are suppressed at higher stimulation voltages, although suppression of tremor seems to lag behind both the voltage and gamma changes by a few seconds and re-emerges later than gamma power after stimulation had stopped. None of the subjects demonstrated a discrete peak in the low gamma band. Repeated measures ANOVA demonstrated a main effect of stimulation on tremor amplitude ( $F_{2,28} = 4.909$ ,  $p = 0.015$ ). Simple within-subject contrasts indicated no difference between 0.5–1 V and 1.5–2 V ( $T_{1,14} = 0.001$ ,  $p = 0.970$ ), but did demonstrate a significant difference between 0.5–1 V and 2.5–3 V ( $T_{1,14} = 14.965$ ,  $p = 0.002$ ). During stimulation at 2.5–3 V, tremor was decreased to  $48.9\% \pm 10.9\%$  compared with the no stimulation condition across all subjects ( $T_{14} = -4.667$ ,  $p < 0.001$ , one-sample *t*-test; Fig. 2a). LFP amplitude (31–45 Hz) was found to be significantly reduced during stimulation ( $F_{2,28} = 6.015$ ,  $p = 0.007$ , ANOVA; Fig. 1b). Simple within-subject contrasts indicated no difference between 0.5–1 V and 1.5–2 V ( $T_{1,14} = 0.474$ ,  $p = 0.502$ ), but a difference between 0.5–1 V and 2.5–3 V ( $T_{1,14} = 8.392$ ,  $p = 0.012$ ). During stimulation at 2.5–3 V, 31–45 Hz LFP amplitude was suppressed to  $92.5\% \pm 3\%$  compared with the no stimulation condition ( $T_{14} = -2.348$ ,  $p = 0.034$ , one-sample *t*-test; Fig. 2b). ANOVAs assessing 4–12 Hz and 13–30 Hz LFP amplitudes over the different stimulation voltages were not significant after Bonferroni correction for multiple ANOVAs ( $F_{2,28} = 1.27$ ,  $p = 0.292$  and  $F_{1,388,19,426} = 4.695$ ,  $p = 0.032$ , respectively, with a Bonferroni corrected significant *p* value of 0.0125).

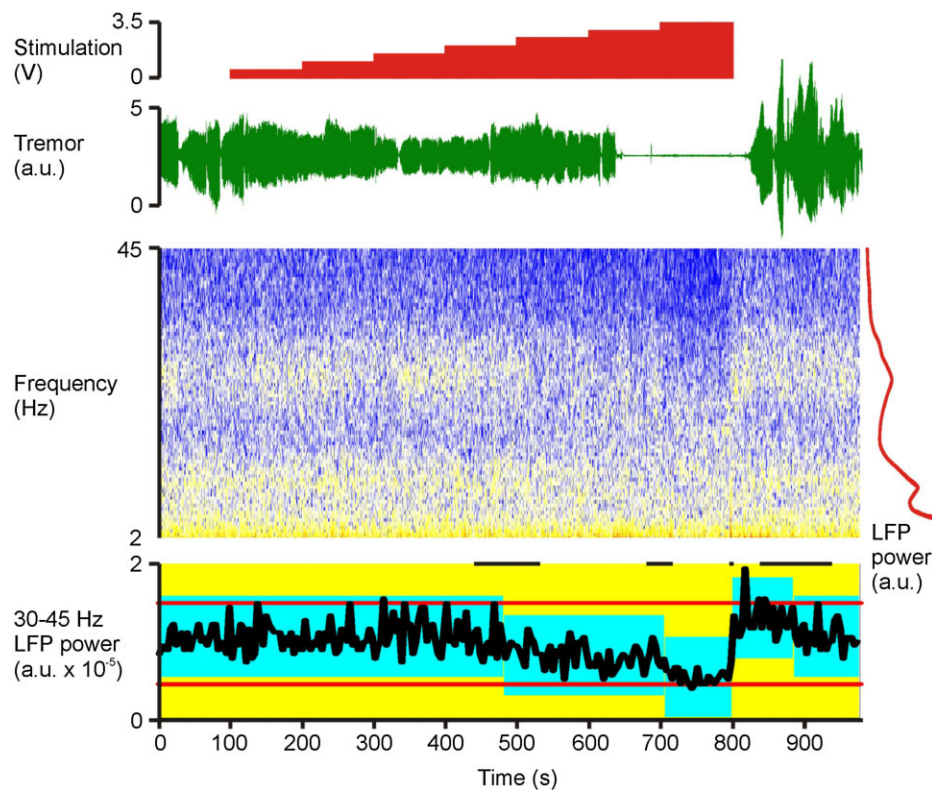
### Correlation Between Tremor and LFP Activities

Within subjects, 31–45 Hz LFP amplitude across stimulation blocks correlated positively with tremor amplitude in 12 of the 15 hemispheres (and in seven, this was individually significant). The average Spearman's correlation coefficient was  $0.43 \pm 0.14$  which was found to be significantly different from 0 ( $T_{14} = 3.07$ ,  $p = 0.008$ ; less than the Bonferroni corrected *p* value of 0.017, one-sample *t*-test, Fig. 3). The 13–30 Hz LFP amplitude showed only a weak correlation with tremor amplitude. The average correlation coefficient was  $0.18 \pm 0.15$  and did not differ significantly from 0 ( $T_{14} = 1.21$ ,  $p = 0.24$ , Fig. 3). The 4–12 Hz amplitude also only showed a weak correlation with tremor amplitude with an average correlation coefficient of  $0.19 \pm 0.14$  that did not differ significantly from 0 ( $T_{14} = 1.35$ ,  $p = 0.19$ , Fig. 3).

## DISCUSSION

We have shown that DBS induced suppression of low gamma LFP power in the STN correlates with DBS-induced reductions in the amplitude of resting tremor. These correlations were frequency selective and not shared by slower LFP activities. In particular, it is striking that correlations were absent from the LFP in the 4–12 Hz band, despite the fact that tremor-related oscillations are common in single-unit recordings (22,24,25). However, the variable phase relationships between neurons oscillating at tremor frequencies mean that this feature is not well represented in the LFP (22,24,26).

The present study contains several limitations. First, in order to recruit a sufficiently large patient sample, we studied patients at several different surgical centers, which may have introduced vari-



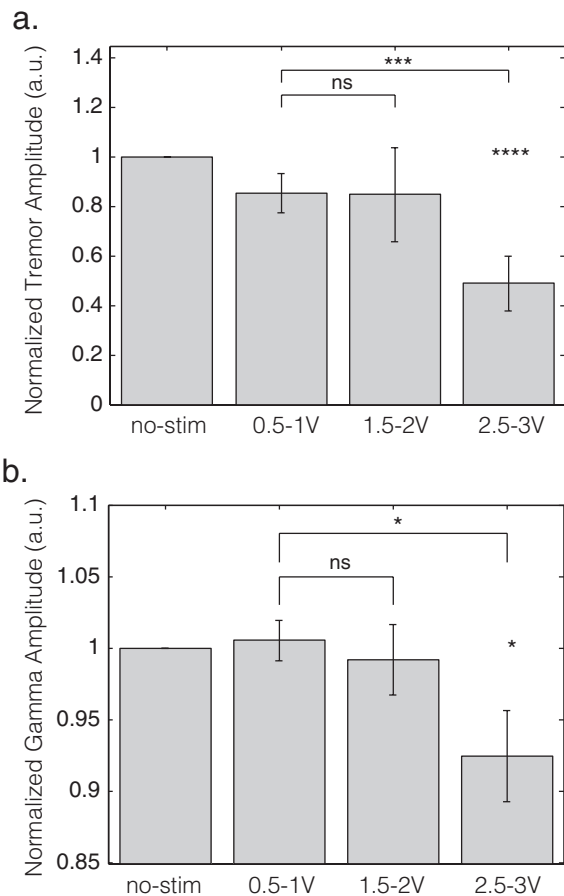
**Figure 1.** Example recording (case 3). Time-evolving STN LFP spectrum and contralateral upper limb tremor are shown, together with the timings of incremental changes in stimulation. No stimulation is applied at the beginning and end of the recordings. The LFP is shown as a spectrogram, with cold colors representing lowest power (so blue, white, yellow, and then red reflect increasing power). To the right of time-evolving spectrogram is a time-averaged LFP power spectrum in red demonstrating discrete peaks at twice tremor frequency (10 Hz) and in the beta band (peaking at 26 Hz), but no such discrete peak in the low gamma (31–45 Hz) band. Onset and offset of tremor suppression is delayed for a few seconds after corresponding voltage changes. In contrast, return of gamma power to baseline levels is very rapid upon cessation of stimulation. Below the time-evolving spectrogram (bottom trace) is the control chart of the 31–45 Hz LFP power estimated in nonoverlapping 4 sec blocks. Red horizontal lines either side of the power trace in black are the control limits of the whole recording. The blue blocks represent periods of constant 31–45 Hz power identified by change-point analysis ( $p < 0.01$ ) (23). The vertical extent of the blue blocks denotes the 99% confidence limits centered on the mean of each stable period. Short black horizontal lines at the top are the 99% confidence limits of the changes in gamma power (10,000 bootstraps). Change-point analysis independently confirms that gamma power was reduced around the time of increasing stimulation voltage to 2.5 V and 3.5 V. Gamma power then rebounded when stimulation was stopped. Stimulation was delivered at 130 Hz with 90  $\mu$ sec pulse width and applied at contact 1. The LFP was recorded from contacts 02 on the right. The tremor was recorded with an accelerometer taped to the dorsum of the left (contralateral) hand. LFP, local field potential; STN, subthalamic nucleus.

ance related to the DBS positioning strategy in our dataset. However, although the numbers are too low to apply statistics, we did not see differences in either baseline characteristics or tremor suppression characteristics between the different centers. Second, our study does not address the question of the precise site of origin of the low gamma activity. We recorded from the contact pair that afforded the highest beta power, given that this activity is supposed to originate in the dorsal “motor” STN (7,17), but in order to harness common-mode rejection by our amplifier during DBS we were limited to recordings from rather widely spaced contact pairs. Nevertheless, Weinberger et al. (22) have shown that the increase in gamma activity during tremor is most likely to occur at sites in the dorsal STN. Third, recordings were performed only a few days after electrode implantation, when temporary stun effects may be present, leading to increased electrode impedances, with potential changes in recorded signal voltages, and temporary improvement in baseline impairments (27–30). Future studies using the next generation of implantable of impulse generators with recording facilities are necessary to confirm whether the findings reported here remain representative during chronic stimulation, when any potential stun effects have elapsed (31). Finally, there were no interleaved washout epochs between stimulation at different voltages.

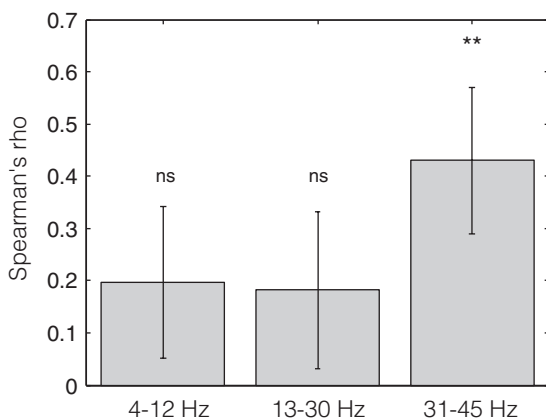
However, despite these limitations, we think our findings are robust enough to support our conclusions.

An aspect that requires further comment is the relatively small suppression of low gamma power during effective DBS. Although significant, this represented only a 7% power reduction within this frequency band. Although this might relate to the perioperative stun effect, it should also be stressed that power in this region will have been near the noise floor of our recording setup. This may prohibit a true scalar appreciation of the DBS-induced suppression of physiological gamma activity, as a significant proportion of the power in this band may have been due to a baseline elevated by electrical noise. Nevertheless, low gamma suppression was still very small when considered in absolute terms, less than a 3  $\mu$ V reduction in signal amplitude integrated over the band, and this may prove too low for closed-loop recording and stimulation systems focusing on tremor, without further improvement in amplifier design.

Whether low gamma activity in the region of the STN is directly related to tremor generation or represents a permissive state for tremor generation remains uncertain. Against a direct relationship between low gamma activity in the region of the STN and tremor is the fact that gamma activity (unlike beta activity) increases in power following treatment with levodopa (6), and yet levodopa can also



**Figure 2.** Average amplitudes of (a) tremor and (b) 31–45 Hz activities over the different stimulation ranges. Data are normalized to the no-stimulation condition (left column). Vertical gray bars depict mean values and the black stripes the standard error of this mean. a.u., arbitrary units; no-stim, no-stimulation; ns, nonsignificant. \* $p < 0.05$ ; \*\*\* $p < 0.005$ ; \*\*\*\* $p < 0.001$ .



**Figure 3.** Average correlations of 4–12, 13–30, and 31–45 Hz band LFP and tremor amplitudes. Vertical bars depict the mean Spearman's rho of the correlation analyses between normalized tremor amplitude and normalized 4–12, 13–30, and 31–45 Hz power. The black stripes indicate the standard error of the mean. ns, nonsignificant. \*\* $p < 0.01$ . LFP, local field potential.

attenuate tremor. Nevertheless, levodopa generally increases gamma at higher frequencies than the low gamma seen here, and it may also be true that there are multiple functional gamma activities in the subthalamic region, only one of which is directly or indirectly

related to rest tremor. Consistent with this interpretation, low gamma activity in the STN also increases during mental stress (32,33), when PD rest tremor also increases in amplitude (34).

Although beta activity tended to be suppressed by DBS in this cohort, this did not remain significant after correcting for the multiple ANOVAs. This is in contrast to the results of previous studies that demonstrated clear beta suppression during DBS (16,35). This may relate to methodological differences, such as differences in the noise floor of the recording systems or frequency band selection, or phenotypic differences between the studies. Previous studies have not selected patients, whereas here we only assessed those with tremor both pre- and postoperatively. Finally, the beta suppression induced by DBS in this cohort may have been somewhat masked by the suppression of tremor, as prominent tremor has been associated with the suppression of beta activity in the STN and motor thalamus (36,37), and so the converse, increase of beta activity, might be expected during tremor suppression.

In conclusion, the findings presented here strengthen the relationship between low gamma activity and rest tremor, and add to the growing evidence that different spectral elements in the STN LFP may be associated with different features of Parkinsonism. The potential clinical relevance of this lies in the prospect of individualized DBS, whereby different LFP features are tracked to guide stimulation that is most appropriate for the particular set of symptoms experienced by a given patient at that moment in time (38).

## Authorship Statement

Prof. Brown designed the study and Dr. Pogosyan was responsible for the software required for the study. Drs. Beudel, Little, and Thevathasan conducted the study; Dr. Foltynie, Prof. Limousin, Prof. Ashkan, Mr. Zrinzo, Prof. Hariz, Dr. Bogdanovic, Dr. Cheeran, Mr. Green, and Prof. Aziz were involved in patient recruitment. Drs. Beudel and Little, and Prof. Brown analyzed the data. Dr. Beudel prepared the manuscript draft with important intellectual input from Prof. Brown and Dr. Little. All authors reviewed the manuscript critically. All authors approved the final manuscript.

## How to Cite this Article:

Beudel M., Little S., Pogosyan A., Ashkan K., Foltynie T., Limousin P., Zrinzo L., Hariz M., Bogdanovic M., Cheeran B., Green A.L., Aziz T., Thevathasan W., Brown P. 2015. Tremor Reduction by Deep Brain Stimulation Is Associated With Gamma Power Suppression in Parkinson's Disease. *Neuromodulation* 2015; 18: 349–354

## REFERENCES

- Hughes AJ, Daniel SE, Kilford L, Lees AJ. Accuracy of clinical diagnosis of idiopathic Parkinson's disease: a clinico-pathological study of 100 cases. *J Neurol Neurosurg Psychiatr* 1992;55:181–184.
- Baumann CR. Epidemiology, diagnosis and differential diagnosis in Parkinson's disease tremor. *Parkinsonism Relat Disord* 2012;18 (Suppl. 1):S90–S92.
- Hornykiewicz O. Dopamine (3-hydroxytyramine) and brain function. *Pharmacol Rev* 1966;18:925–964.
- Stochl J, Boomsma A, Ružička E, Brozova H, Blahus P. On the structure of motor symptoms of Parkinson's disease. *Mov Disord* 2008;23:1307–1312.
- Jellinger KA. Post mortem studies in Parkinson's disease—is it possible to detect brain areas for specific symptoms? *J Neural Transm Suppl* 1999;56:1–29.
- Kühn AA, Kupsch A, Schneider G-H, Brown P. Reduction in subthalamic 8–35 Hz oscillatory activity correlates with clinical improvement in Parkinson's disease. *Eur J Neurosci* 2006;23:1956–1960.

7. Weinberger M, Mahant N, Hutchison WD et al. Beta oscillatory activity in the subthalamic nucleus and its relation to dopaminergic response in Parkinson's disease. *J Neurophysiol* 2006;96:3248–3256.
8. Kühn AA, Tsui A, Aziz T et al. Pathological synchronisation in the subthalamic nucleus of patients with Parkinson's disease relates to both bradykinesia and rigidity. *Exp Neurol* 2009;215:380–387.
9. Ray NJ, Jenkinson N, Wang S et al. Local field potential beta activity in the subthalamic nucleus of patients with Parkinson's disease is associated with improvements in bradykinesia after dopamine and deep brain stimulation. *Exp Neurol* 2008;213:108–113.
10. Anzak A, Tan H, Pogosyan A et al. Subthalamic nucleus activity optimizes maximal effort motor responses in Parkinson's disease. *Brain* 2012;135 (Pt 9):2766–2778.
11. Tan H, Pogosyan A, Anzak A et al. Complementary roles of different oscillatory activities in the subthalamic nucleus in coding motor effort in Parkinsonism. *Exp Neurol* 2013;248:187–195.
12. Tan H, Pogosyan A, Anzak A et al. Frequency specific activity in subthalamic nucleus correlates with hand bradykinesia in Parkinson's disease. *Exp Neurol* 2013;240:122–129.
13. Zavala B, Brittain J-S, Jenkinson N et al. Subthalamic nucleus local field potential activity during the Eriksen flanker task reveals a novel role for theta phase during conflict monitoring. *J Neurosci* 2013;33:14758–14766.
14. Foltyniec T, Hariz MI. Surgical management of Parkinson's disease. *Expert Rev Neurother* 2010;10:903–914.
15. Rossi L, Foffani G, Marceglia S, Bracchi F, Barbieri S, Priori A. An electronic device for artefact suppression in human local field potential recordings during deep brain stimulation. *J Neural Eng* 2007;4:96–106.
16. Eusebio A, Thevathasan W, Doyle Gaynor L et al. Deep brain stimulation can suppress pathological synchronisation in parkinsonian patients. *J Neurol Neurosurg Psychiatr* 2011;82:569–573.
17. Kühn AA, Trottenberg T, Kivi A, Kupsch A, Schneider G-H, Brown P. The relationship between local field potential and neuronal discharge in the subthalamic nucleus of patients with Parkinson's disease. *Exp Neurol* 2005;194:212–220.
18. Muthuswamy J, Thakor NV. Spectral analysis methods for neurological signals. *J Neurosci Methods* 1998;83:1–14.
19. Pogosyan A, Yoshida F, Chen CC et al. Parkinsonian impairment correlates with spatially extensive subthalamic oscillatory synchronization. *Neuroscience* 2010;171:245–257.
20. Reck C, Florin E, Wojtecki L et al. Characterisation of tremor-associated local field potentials in the subthalamic nucleus in Parkinson's disease. *Eur J Neurosci* 2009;29:599–612.
21. Timmermann L, Gross J, Dirks M, Volkmann J, Freund H-J, Schnitzler A. The cerebral oscillatory network of parkinsonian resting tremor. *Brain* 2003;126 (Pt 1):199–212.
22. Weinberger M, Hutchison WD, Lozano AM, Hodaie M, Dostrovsky JO. Increased gamma oscillatory activity in the subthalamic nucleus during tremor in Parkinson's disease patients. *J Neurophysiol* 2009;101:789–802.
23. Taylor WA. Change-point analysis: a powerful new tool for detecting changes. <http://www.variation.com/cpa/tech/changepoint.html>.
24. Levy R, Hutchison WD, Lozano AM, Dostrovsky JO. High-frequency synchronization of neuronal activity in the subthalamic nucleus of parkinsonian patients with limb tremor. *J Neurosci* 2000;20:7766–7775.
25. Levy R, Hutchison WD, Lozano AM, Dostrovsky JO. Synchronized neuronal discharge in the basal ganglia of parkinsonian patients is limited to oscillatory activity. *J Neurosci* 2002;22:2855–2861.
26. Hurtado JM, Rubchinsky LL, Sigvardt KA, Wheelock VL, Pappas CTE. Temporal evolution of oscillations and synchrony in GPI/muscle pairs in Parkinson's disease. *J Neurophysiol* 2005;93:1569–1584.
27. Lempka SF, Miocinovic S, Johnson MD, Vitek JL, McIntyre CC. In vivo impedance spectroscopy of deep brain stimulation electrodes. *J Neural Eng* 2009;6:046001.
28. Rosa M, Marceglia S, Servello D et al. Time dependent subthalamic local field potential changes after DBS surgery in Parkinson's disease. *Exp Neurol* 2010;222:184–190.
29. Abosch A, Lanctin D, Onaran I, Eberly L, Spaniol M, Ince NF. Long-term recordings of local field potentials from implanted deep brain stimulation electrodes. *Neurosurgery* 2012;71:804–814.
30. Jech R, Mueller K, Urgošik D et al. The subthalamic microlesion story in Parkinson's disease: electrode insertion-related motor improvement with relative cortico-subcortical hypoactivation in fMRI. *PLoS ONE* 2012;7:e49056.
31. Ryapolova-Webb E, Afshar P, Stanslaski S et al. Chronic cortical and electromyographic recordings from a fully implantable device: preclinical experience in a non-human primate. *J Neural Eng* 2014;11:016009.
32. Anzak A, Gaynor L, Beigi M et al. A gamma band specific role of the subthalamic nucleus in switching during verbal fluency tasks in Parkinson's disease. *Exp Neurol* 2011;232:136–142.
33. Anzak A, Gaynor L, Beigi M et al. Subthalamic nucleus gamma oscillations mediate a switch from automatic to controlled processing: a study of random number generation in Parkinson's disease. *Neuroimage* 2013;64:284–289.
34. Deuschl G, Bain P, Brin M. Consensus statement of the movement disorder society on tremor. *Ad Hoc scientific committee. Mov Disord* 1998;13 (Suppl. 3): 2–23.
35. Whitmer D, de Solages C, Hill B, Yu H, Henderson JM, Bronte-Stewart H. High frequency deep brain stimulation attenuates subthalamic and cortical rhythms in Parkinson's disease. *Front Hum Neurosci* 2012;6:155.
36. Hirschmann J, Hartmann CJ, Butz M et al. A direct relationship between oscillatory subthalamic nucleus-cortex coupling and rest tremor in Parkinson's disease. *Brain* 2013;136 (Pt 12):3659–3670.
37. Basha D, Dostrovsky JO, Lopez Rios AL, Hodaie M, Lozano AM, Hutchison WD. Beta oscillatory neurons in the motor thalamus of movement disorder and pain patients. *Exp Neurol* 2014;261:782–790.
38. Little S, Brown P. What brain signals are suitable for feedback control of deep brain stimulation in Parkinson's disease? *Ann N Y Acad Sci* 2012;1265: 9–24.

## COMMENT

The authors should be congratulated on a sound and well-written manuscript. Although the study involves a small number of patients and their significant finding that low gamma band power decreases in the LFP's following STN DBS is minor, the study is clearly presented, the statistics appear to be solid, and the Discussion addresses both strengths and weaknesses. Overall, I am concerned that the findings may ultimately be affected by the methodology—specifically, that they are studying LFPs within only a few days of implantation. Although the authors do raise this issue, it cannot be dismissed without future studies performed further out in time from surgery. In addition, in trying to decipher what these findings may tell us about PD circuitry and optimization of regular DBS or closed-loop systems, it may be useful to examine the LFP's resulting from DBS at frequencies between 100 Hz and 200 Hz as many patients have variable optimization within this range for tremor control. These findings in the low gamma band, and the lack of findings within the beta band, are somewhat confounding for the still-developing area of LFP research. This should not detract from the value of the work, however. Finally, these studies were done using patients at multiple centers, which I believe strengthens the findings in some ways—but stronger still would be study replication, which hopefully someone will perform in the future.

Jeff Arle, MD, PhD  
Boston, USA

Comments not included in the Early View version of this paper.