



Minerva Access is the Institutional Repository of The University of Melbourne

Author/s:

Thompson, AC;Wise, AK;Hart, WL;Needham, K;Fallon, JB;Gunewardene, N;Stoddart, PR;Richardson, RT

Title:

Hybrid optogenetic and electrical stimulation for greater spatial resolution and temporal fidelity of cochlear activation

Date:

2020-10-01

Citation:

Thompson, A. C., Wise, A. K., Hart, W. L., Needham, K., Fallon, J. B., Gunewardene, N., Stoddart, P. R. & Richardson, R. T. (2020). Hybrid optogenetic and electrical stimulation for greater spatial resolution and temporal fidelity of cochlear activation. *Journal of Neural Engineering*, 17 (5), <https://doi.org/10.1088/1741-2552/abbff0>.

Persistent Link:

<https://hdl.handle.net/11343/336283>

Hybrid optogenetic and electrical stimulation for greater spatial resolution and temporal fidelity of cochlear activation

Alex C. Thompson¹, Andrew K. Wise^{1,2,3}, William L. Hart⁴, Karina Needham², James B. Fallon^{1,2,3}, Nilishka Gunewardene¹, Paul R. Stoddart⁴, Rachael T. Richardson^{1,2,3*}

¹ The Bionics Institute, East Melbourne, VIC 3002, Australia; ² Department of Surgery (Otolaryngology), University of Melbourne, The Royal Victorian Eye and Ear Hospital, East Melbourne, VIC 3002, Australia; ³ Medical Bionics Department, University of Melbourne, East Melbourne, VIC, Australia; ⁴ ARC Training Centre in Biodevices, Swinburne University of Technology, Hawthorn, VIC 3122, Australia

*For correspondence: rrichardson@bionicsinstitute.org

Abstract

Objective. Compared to electrical stimulation, optogenetic stimulation has the potential to improve the spatial precision of neural activation in neuroprostheses, but it requires intense light and has relatively poor temporal kinetics. We tested the effect of hybrid stimulation, which is the combination of subthreshold optical and electrical stimuli, on spectral and temporal fidelity in the cochlea by recording multiunit activity in the inferior colliculus of channelrhodopsin (H134R variant) transgenic mice. *Approach.* Pulsed light or biphasic electrical pulses were delivered to cochlear spiral ganglion neurons of acutely deafened mice, either as individual stimuli or as hybrid stimuli for which the timing of the electrical pulse had a varied delay relative to the start of the optical pulse. Response thresholds, spread of activation and entrainment data were obtained from multi-unit recordings from the auditory midbrain. *Main results.* Facilitation occurred when subthreshold electrical stimuli were applied at the end of, or up to 3.75 ms after subthreshold optical pulses. The spread of activation resulting from hybrid stimulation was significantly narrower than electrical-only and optical-only stimulation ($p < 0.01$), measured at equivalent suprathreshold levels of loudness that are relevant to cochlear implant users. Furthermore, temporal fidelity, measured as maximum following rates to 300 ms pulse trains bursts up to 240 Hz, was 2.4-fold greater than optical-only stimulation ($p < 0.05$). *Significance.* By significantly improving spectral resolution of electrical- and optical-only stimulation and the temporal fidelity of optical-only stimulation, hybrid stimulation has the potential to increase the number of perceptually independent stimulating channels in a cochlear implant.

Key words

Optogenetics; Cochlear implant; Optical stimulation; Electrical stimulation; Hybrid stimulation; Co-stimulation; Inferior colliculus; Spectral resolution; Temporal fidelity.

Introduction

Cochlear implants restore hearing percepts to people with severe or profound hearing loss. The device directly stimulates the auditory neurons with electrical pulses, thus bypassing damaged or lost sensory hair cells in the cochlea. Taking advantage of the tonotopic arrangement of the cochlea, sound is processed into up to 22 frequency bands and delivered to the most relevant site in the cochlea. Ideally, the cochlear implant would also use precise timing of electrical pulses at each stimulation site to encode pitch (Erfanian Saeedi et al., 2017) and other fine timing information. In practice, however, current spread causes significant overlap between the neural populations activated by each electrode (O'Leary et al., 2009, Kral et al., 1998, Black et al., 1981, Snyder et al., 2004) making it nearly impossible to get fine temporal structure at all stimulating sites, which are typically limited to up to 8 independent regions (Friesen et al., 2001, Berg et al., 2019, Fishman et al., 1997). Consequently, cochlear implants stimulate regions of the cochlea sequentially and users report difficulty understanding speech in everyday background noise and poor perception of tonal sounds such as music (Fu et al., 1998, Friesen et al., 2001, McDermott, 2004, Wilson and Dorman, 2008). To improve the representation of complex sounds, an implant must be able to provide high spectro-temporal resolution for the fine temporal structure of the stimulus to be delivered across the cochlea.

Bipolar, tripolar or focussed multipolar stimulation strategies have improved spectral resolution in animal studies (Berenstein et al., 2008, George et al., 2015, George et al., 2014, Bierer and Middlebrooks, 2004) and human trials (Donaldson et al., 2005, Srinivasan et al., 2012, Landsberger and Srinivasan, 2009, Bierer, 2007). However, they have not delivered fine temporal structure for simultaneous multi-channel stimulation. As such, there has not been any clear clinical benefit from the use of these stimulation strategies (Berenstein et al., 2008, Bierer and Litvak, 2016). Optical stimulation of auditory neurons presents an alternative method of increasing spectral resolution as light can be focused onto a target and is not limited by the same conductive spread as electrical current (reviewed in (Richardson et al., 2020)). Application of infrared or near infrared light to the cochlea has been shown to result in activation of auditory neurons (Izzo et al., 2007, Richter et al., 2008, Guan et al., 2015, Wang et al., 2016, Richter et al., 2011). While the spectral resolution of infrared neural activation in the cochlea was shown to approach that of acoustic input (Richter et al., 2011), it has proven controversial: Many studies suggest a photoacoustic origin of the infrared neural response (Teudt et al., 2011, Kallweit et al., 2016), supported by the fact that the neural responses to infrared neural stimulation of the cochlea or the cochlear nucleus disappear after deafening (Schultz et al., 2012, Thompson et al., 2015, Baumhoff et al., 2019, Verma et al., 2014) and that the responses correspond to pressure measurements in the external auditory meatus (Baumhoff et al., 2019), thus providing a basis for near-acoustic frequency selectivity. In contrast, direct neural activation was implied through the use of *Vglut3* null mice in which synaptic transmission via hair cells is not possible (Tan et al., 2018). Tissue heating by the infrared light is also likely to severely limit performance for closely spaced channels at high repetition rates (Thompson et al., 2013).

Using another approach, optogenetic methods, in which auditory neurons are first genetically modified with light-sensitive ion channels (opsins), has enabled neural activation with relatively low power blue or red visible light sources and has also resulted in very high spectral resolution of activation in the cochlea (Wrobel et al., 2018, Keppeler et al., 2018, Duarte et al., 2018, Hernandez et al., 2014, Mager et al., 2018, Dieter et al., 2019). In optogenetic-based stimulation, one of the main limitations is the slow temporal kinetics of the opsins used. Typical electrical stimulation rates for the cochlear implant vary, but the ACE (Advanced Combination Encoder) strategy, for example, uses fixed rates between 250 Hz and 2.4 kHz. Modulations above 300 Hz have been demonstrated to be important for pitch perception (Croghan et al., 2017, Smith et al., 2002), but despite the potential for very high rate stimulation, there is no evidence of improved speech perception when using electrical stimulation rates over 500 Hz (Shannon et al., 2011). The maximum firing rate of optically evoked action potentials is limited by the channel closing kinetics of the opsin, which for channelrhodopsin-2 (ChR2) is only 70 Hz (Hernandez et al., 2014). One strategy to overcome slow temporal kinetics is to

use ultrafast opsins such as Chronos (Klapeetke et al., 2014), where a 50% spike probability was achieved with repetition rates of 200 Hz or more (Keppeler et al., 2018), but required intense light with associated power and safety issues. Another strategy is to combine subthreshold electrical pulses with subthreshold optical pulses (hybrid stimulation). Our earlier work indicated that hybrid stimulation resulted in action potentials in cultured auditory neurons with a three-fold increase in the peak firing rate compared to optical stimulation alone (Hart et al., 2020). However, spectral resolution was not addressed in that study.

Here, we compare the spectral resolution and maximum following rate of optical, electrical and hybrid stimulation in the auditory system of transgenic mice expressing the H134R variant of ChR2, which has slightly slower kinetics but generates larger photocurrents compared to wild-type ChR2 (Berndt et al., 2011). Cochleae of acutely deafened mice were implanted with a single channel electrical/optical device enabling hybrid stimulation. Electrical-only, optical-only or hybrid stimuli were applied to the cochlea at sub- and suprathreshold levels, with the timing of the electrical pulse having a varied delay relative to the start of the optical pulse in the hybrid stimuli. Spread of activation and entrainment rates were measured via a multi-channel recording array inserted into the contralateral inferior colliculus (IC) of the auditory midbrain to record multi-unit neural activity across the isofrequency laminae (George et al., 2015, George et al., 2014, Landry et al., 2013). Our results show activation of the auditory pathway by the combination of a sub-threshold optical pulse and a sub-threshold electrical pulse (hybrid stimulation). We demonstrate an extended post-stimulus facilitation period during which a sub-threshold electrical stimulus can be applied to activate the auditory pathway *in vivo*, a finding which we also confirmed at the cellular level *in vitro* by patch clamp electrophysiology. Hybrid stimulation significantly reduced the spread of activation compared to electrical stimulation alone and also resulted in a 2.4-fold increase in the maximum following rate for pulse trains, rising from 46 Hz for optical only to 111 Hz for hybrid stimulation.

Materials and methods

Animals

Heterozygous transgenic mice expressing ChR2-H134R in spiral ganglion neurons were derived by breeding COP4*H134R/EYFP mice (Jax strain 012569: B6;129S-Gt(ROSA)26Sor^{tm32(CAG-COP4*H134R/EYFP)Hze/J}) with Cre-parvalbumin mice (Jax strain 008069: B6;129P2-Pvalb^{tm1(cre)Arbr}). C57BL/6 mice were used as controls. Males and females were used at random. The use and care of the experimental animals in this study were approved by St Vincent's Hospital (Melbourne) Animal Ethics Committee (#14-028 and #18-003) and follows the Guidelines to Promote the Wellbeing of Animals used for Scientific Purposes (2013), the Australian Code for Care and Use of Animals for Scientific Purposes (8th edition, 2013) and the Prevention of Cruelty to Animals Amendment Act (2015).

Inferior colliculus recordings

A total of ten transgenic mice (8 males and 2 females) and two wild-type mice (both female) were used with an average age of 64 days (range 35-87 days). Cochlear exposures and IC recordings were performed under gaseous general anaesthesia; 1-2% isofluorane (Zoetis, Melbourne, Australia) mixed with oxygen delivered at a flow rate of 1.5 L/min, with additional local anaesthesia (1% Lignocaine hydrochloride; 10 mg/mL; ProVet, Melbourne, Australia) applied at each surgical site. A heating pad was used to maintain core body temperature. Respiration rate was monitored over the duration of the experiment and fluids were injected subcutaneously after 2 hours.

Surgical access to the left bulla was made by a retroauricular incision and retraction of adipose and muscle tissue. The bulla was opened manually with a blade and the opening was expanded with angled forceps. The stapedial artery was removed by coagulation with a low-temperature bipolar cautery. Hair cells were inactivated by the flushing of 8-10 drops of 100 mg/mL neomycin sulfate (Sigma-Aldrich, St Louis, MO) through the punctured round window membrane whilst aspirating from the

apex via a small hand-drilled hole. The cochlear surgical site was then temporarily plugged with a saline-soaked cotton ball while the IC was exposed. For the IC exposure, mice were placed in a stereotaxic frame (David Kopf Instruments, Tujunga, CA). A craniotomy was performed in the region of the intersection of the parietal and interparietal bones. The dura mater was dissected to expose the IC contralateral to the neomycin-exposed cochlea. A hybrid optical/electrical device, described below, was then positioned 1-2 mm into the cochlea through the round window membrane via a micropositioner. With the hybrid device in place, a multiunit recording array (NeuroNexus Technologies, Ann Arbor, MI), consisting of 32 recording sites spaced at 50 μm intervals over 1550 μm , each with a surface area of 177 μm^2 , was mounted on a Microdrive positioner (David Kopf Instruments, Tujunga, CA) and positioned at the surface of the exposed IC. The array was advanced along the dorsal-ventral axis of the central nucleus of the IC to a depth of approximately 2 mm from the surface as determined by visual monitoring of responses at the tip electrode to optical or electrical stimulation in the cochlea. When the recording array was confirmed to be within the IC, a 1% agar solution was applied to the surface of the IC around the recording array.

Optical and electrical stimuli

The light source was a custom-built solid state 488 nm laser (OptoTech, Melbourne, Australia) with light delivered through a 105 μm core silica optical fibre with 125 μm silica cladding, 3 mm PVC jacket and numerical aperture of 0.22 (Thorlabs, Newton, NJ). The fibre was connected to the laser using an FC connector and the distal end was bare fibre. The fibre was bonded with cyanoacrylate to a 25 μm 90/10 Platinum/Iridium wire (insulation removed to expose ~ 0.1 mm at the tip) in order to provide electrical stimulation to the cochlea, with a stainless steel needle placed subcutaneously in the axillary region of the mouse serving as the remote return electrode.

Stimulus waveforms were generated by an in-house purpose-built multichannel stimulator controlled by custom software implemented in Igor Pro (Wavemetrics, Portland, OR). Electrical current was delivered in Current Levels 'CL', where current in μA is given by: $I = 17.5 * 100^{\frac{CL}{255}}$. Light was presented as single pulses at 0-15 mW light intensities and 0.5-50 ms pulse widths. Irradiance was calibrated with a Fieldmaster power meter and LM10 power meter head (Coherent, Santa Clara, CA). Biphasic electrical stimulation (100 μs /phase with 50 μs interphase gap) was presented at sub- and suprathreshold levels (20-120% of threshold) with varying delays both during and after the optical pulses. Pulse train stimuli were presented in 5-240 Hz bursts to examine the rate-following efficiency of neurons to repetitive optical, electrical and combined stimuli. For acoustic IC recordings in normal hearing mice, acoustic stimulation was at 10-100 dB SPL, 4-32 kHz, 5 ms rise/fall and 100 ms duration.

Data acquisition and analysis

Multiunit spike activity from the recording electrodes was amplified, filtered and digitized at a sampling rate of 33 kHz using a Cerebus data acquisition system (Blackrock Microsystems, Salt Lake City, UT).

Multi-unit activity was processed using customised spike detection scripts in Igor Pro (Wavemetrics, Portland, OR) and is described in detail in (George et al., 2014). Briefly, a level of four times the root mean square for each recording channel was used to detect spikes. Spike counts were generated from a 5 – 40 ms window post stimulus, except for the pulse trains which used a 6-10 ms window. Spike counts across the array were used to display response images, with the depth of the IC recording array on the x-axis and the stimulus intensity on the y-axis. A spatial tuning curve (STC) image was generated for specific stimulation sites or acoustic frequencies. Threshold was determined for each condition, defined as the lowest stimulus intensity to elicit a normalised spike rate of 0.3. The recording site with the lowest threshold was defined as the best recording site.

The discrimination index (d') represents the growth in neural response with increasing stimulus intensity at each recording site. At the best recording site, the value of d' was cumulated across increasing stimulus levels above IC threshold. The widths of the STCs were measured at cumulative $d'=1$ and $d'=2$ for comparison between modalities.

Response in the IC to 300 ms duration bursts of stimuli presented at the cochlea was used to evaluate temporal fidelity. The maximum following rate was defined as the rate for which 80% of triggers had at least one spike in response. To avoid overlapping windows at high pulse rates, a fixed 6-10 ms post stimuli window was used to count spikes. Maximum following rates were determined with suprathreshold optical and subthreshold electrical stimulation at a level where $d' \geq 2$ level above threshold.

Histology

Deeply anaesthetised mice were intracardially perfused with 0.9% (w/v) saline containing 0.1% (w/v) heparin sodium (ProVet, Melbourne, Australia) and 0.025% (w/v) sodium nitrite (Sigma-Aldrich, St Louis, MO), followed by neutral buffered formalin (NBF; Sigma-Aldrich, St Louis, MO). The temporal bones were extracted and the bulla was dissected away to expose the cochlea and semi-circular canals. The cochlea was post-fixed for a further 2 hours prior to rinsing with phosphate buffered saline (PBS) and decalcification in 0.12 M ethylenediaminetetraacetic acid (EDTA; Sigma-Aldrich, St Louis, MO) for 48 hours on an orbital shaker at 4 °C. Decalcified cochleae were either frozen in optimal cutting temperature compound (OCT; ProSciTech, Thuringowa Central, Queensland, Australia) and sectioned at 12 μm through the mid-modiolar plane for -20 °C storage or were microdissected for cochlear wholemount preparation.

Frozen sections were thawed at room temperature, incubated in PBS for 10 minutes, permeabilised in PBS containing 0.2% Triton X-100 (Sigma-Aldrich, St Louis, MO) and blocked in PBS containing 10% goat serum (Sigma-Aldrich, St Louis, MO) and 0.2% Triton X-100 and for 1-2 hours. A mouse monoclonal antibody to the C-terminus of ChR2 (#651180, Progen, Heidelberg, Germany) was applied to the sections for 2 hours, diluted 1:200 in blocking buffer. After washing the sections in PBS over 30 minutes, a secondary antibody was applied to the sections for 2 hours (AlexaFluor goat anti-mouse 594 diluted 1:400 in blocking buffer; Life Technologies, Carlsbad, CA). Sections were again washed in PBS over 30 minutes prior to the application of mounting media and coverslips.

Wholemounts were blocked in 0.1% Triton X-100 and 10% heat inactivated donkey serum (Sigma-Aldrich, St Louis, MO) in PBS for 1 hour. Rabbit polyclonal Myosin-VIIA antibody for hair cells (#25-6790; Proteus Biosciences, Ramona, CA) was diluted 1:200 in blocking solution and applied overnight at 4 °C. Wholemounts were then treated with secondary antibody (Alexa 488 or Alexa Fluor 568 conjugated; Thermo Fisher Scientific, Scoresby, Victoria, Australia) diluted at 1:500 in PBS for 2 hours. The wholemounts were washed three times for 5 minutes in PBS and mounted in ProLong Diamond Antifade Mountant with DAPI (#P36965; Thermo Fisher Scientific, Scoresby, Victoria, Australia). All staining was visualized and imaged using the Zeiss fluorescence microscope and AxioVision software (Carl Zeiss, Oberkochen, Germany).

In vitro electrophysiology

Cultures of dissociated spiral ganglion neurons were prepared from postnatal day 5 ChR2-H134R transgenic mice (n=12) as described by (Hart et al., 2020). Electrophysiology recordings were carried out following previously established protocols (Hart et al., 2020). Briefly, glass micropipettes were pulled from thick-walled borosilicate (GC150F; SDR Scientific, Sydney, Australia) using a Sutter P87 Flaming Brown Micropipette Puller (Sutter Instruments, Novato, CA) for 5 – 10 M Ω resistance. The intracellular solution consisted of (in mM) K-glu 115, KCl 7, HEPES 10, EGTA 0.05. Sucrose was used for osmolarity (305-310 mOsm) and 2.5 M KOH to adjust pH to 7.1 – 7.3. Extracellular solution consisted

of (in mM) NaCl 137, KCl 5, HEPES 10, D-Glucose 10, CaCl₂, MgCl₂. Sucrose was used to adjust osmolarity (305-310 mOsm) and 10 M NaOH to adjust pH to 7.3 – 7.4. All reagents were purchased from Sigma-Aldrich, St Louis, MO. A junction potential of 12.8 mV was subtracted from all recorded potentials.

Recording was carried out using a Multiclamp 700B digitizer (Molecular Devices, San Jose, CA) and Digidata 1440A amplifier (Molecular Devices, San Jose, CA) with a CV-7B head stage. An OptoPatcher (A-M Systems, Carlsborg, WA) was used to align the fibre through the patch pipette. Recordings were made using Axograph software. Laser settings were controlled by a custom software interface connected by USB, and pulses were externally triggered by a Multiclamp 700B TTL output. The light source was the same as for the *in vivo* studies. A triple pulse protocol was applied, in which a hybrid optical/electrical pulse was delivered, followed by isolated 0.3 ms electrical and 1 ms optical pulses at the same stimulus level. Presentations where the isolated stimuli evoked action potentials were excluded.

Stimulus threshold was defined as the combined optical and electrical stimulus level which evoked action potentials in at least 50% of presentations. Optical and electrical stimulus levels were individually defined relative to the stimulus level required for 50% firing rate when presented as a single stimulus mode (referred to as single pulse threshold).

Results

Animal model

To examine the spectral resolution and temporal fidelity of optical, electrical and hybrid stimulation of the auditory system, we used transgenic mice that expressed the ChR2-H134R-EYFP fusion protein via the parvalbumin promoter. Expression of ChR2-H134R was examined via a ChR2 antibody and confirmed to mirror the localisation of EYFP (enhanced yellow fluorescent protein) in spiral ganglion neuron cell bodies, peripheral fibres and central fibres. The strongest fluorescence localised to the membrane of spiral ganglion neurons (**Figure 1(a)**). Additionally, ChR2-H134R was present in inner hair cells with weaker expression in the outer hair cells of adult transgenic mice (**Figure 1(a)**). This expression pattern was evident throughout the cochlea, from the basal turn to the apical turn. The mice were acutely deafened with neomycin to reduce the possibility of hair cell-mediated auditory responses. The efficacy of the acute neomycin deafening procedure was verified histologically in a subset of mice which showed complete or near complete loss of inner and outer hair cells (n=2; **Figure 1(b-d)**).

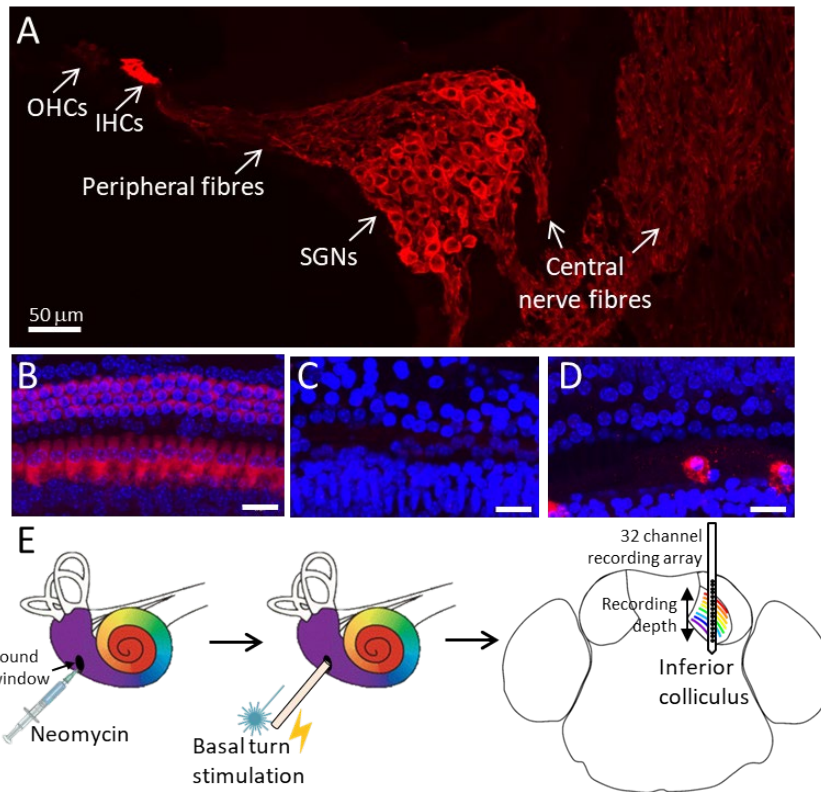


Figure 1 Optogenetic mouse model with acute hearing loss.

(A) Cochlear section from *ChR2-H134R* transgenic mouse stained with *ChR2* antibody (red) showing expression in spiral ganglion neuron (SGN) cell bodies, peripheral fibres and hair cells. **(B)** Representative image of the sensory epithelium in the 16 kHz region of a normal hearing mouse cochlea (red = Myosin VIIA staining hair cells, blue = DAPI). Two weeks after exposure to neomycin there was complete loss of inner and outer hair cells **(C)** or sporadic survival of inner hair cells **(D)**. **(E)** Experimental protocol: Transgenic mice were acutely deafened by infusion of 100 mg/mL neomycin solution through the cochlear round window. An optical fibre with an attached platinum wire was inserted 1-2 mm into the round window. During stimulation, multiunit responses were recorded from the inferior colliculus of the auditory midbrain via a 32-channel recording array. Scale bars for B-D are 20 µm. IHCs - inner hair cells, OHCs – outer hair cells, SGNs – spiral ganglion neurons.

Activation thresholds

Optical pulses (1 ms), biphasic electrical pulses (250 µs) or hybrid stimulation was delivered to the cochlear spiral ganglion neurons of acutely deafened transgenic mice using an optical fibre and platinum wire inserted into the round window of the cochlea. During stimulation, neural recordings were made from the IC of the auditory midbrain using a 32 channel recording array (**Figure 1(e)**). Threshold power levels were defined for optical and electrical pulses, respectively, as the lowest stimulus power level required to elicit a normalised spike rate of at least 0.3 (that is a 30% increase between spontaneous and maximum firing rates). The average maximum firing rate across the animals was 14.3 spikes per stimuli presentation. Hybrid pulses were then presented at varying levels above and below threshold. The start of the electrical pulse was delayed with respect to the start of the optical pulse by a variable time t_d so that when $t_d = 750 \mu\text{s}$ both the optical and electrical pulses ended simultaneously. The delays tested were 0 µs (i.e. no delay), 750 µs, 1750 µs, 2750 µs and 3750 µs. **Figure 2** shows an example raster plot indicating when a neural response was detected in response to 10 repeats for sub- and suprathreshold stimulation levels. It can be seen that the sub-threshold optical and sub-threshold electrical stimuli applied individually did not evoke responses. By contrast, the

application of these stimuli in combination elicited neural activity in the IC when $t_d \geq 750 \mu s$. The reduction in electrical threshold that could be achieved with a sub-threshold optical pulse is shown in **Figure 3** as determined from $n=9$ cochleae for different delays. When the start of the electrical pulse coincided with the start of the optical pulse (no delay; $t_d = 0$), there was minimal effect on thresholds. When the start of the electrical pulse was delayed after the start of the optical pulse, neural responses were detected with subthreshold levels of both optical power and electrical power. Significant reductions in electrical threshold were measured for delays of up to 3.75 ms where the electrical pulse occurred after the end of the optical pulse ($p < 0.05$; ANOVA, $n=9$) (**Figure 3**).

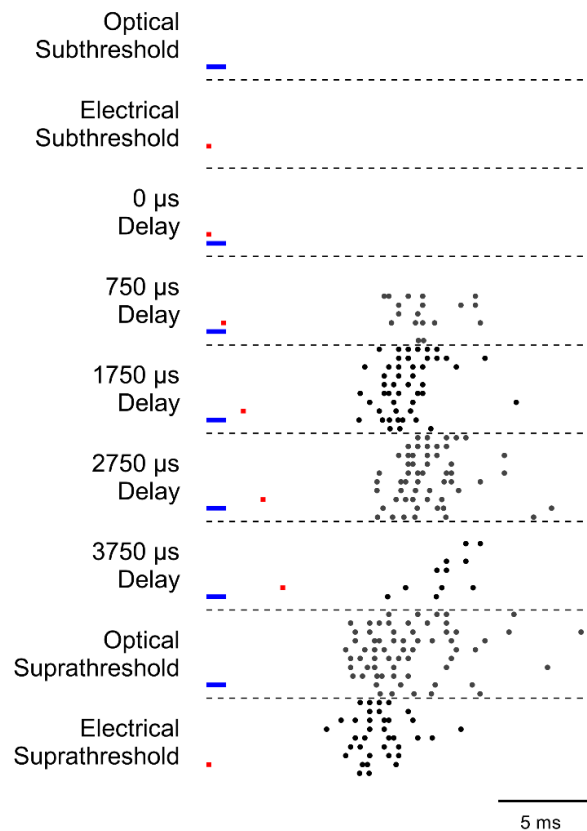


Figure 2. Activation of the auditory pathway by hybrid sub-threshold optical and sub-threshold electrical stimuli.

Raster plot showing the response to subthreshold for optical alone, electrical alone and hybrid stimulation at the same stimulus levels as the individual stimuli with $t_d = 0, 750 \mu s, 1750 \mu s, 2750 \mu s$ and $3750 \mu s$. In this example, the electrical stimulus (70 Current Levels; CL) was 64% of threshold (95 CL) and the optical stimulus ($25 \mu W$) was 70% of threshold ($35 \mu W$). Pulse timing is shown with blue (optical) and red (electrical) lines. When combining subthreshold stimuli, neural responses were only evoked when the electrical stimuli were delayed at least $t_d = 750 \mu s$ to end simultaneously with the optical pulse and a maximum response was observed for $t_d = 1750$ and $2750 \mu s$. For comparison, responses to individual suprathreshold stimuli ($50 \mu W$ and 100 CL) are also shown.

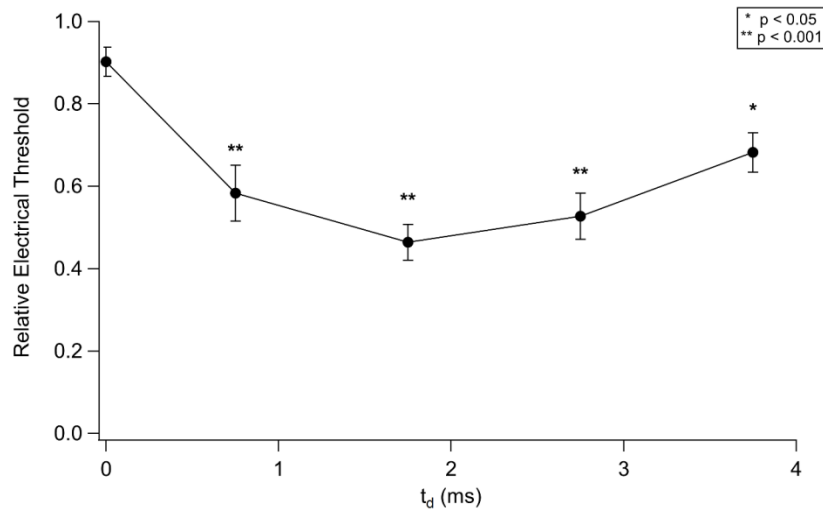


Figure 3. The timing of the electrical pulse affects the reduction in the electrical threshold observed for hybrid stimulation.

The ratio of electrical threshold with no optical pulse compared to electrical threshold with a sub-threshold optical pulse at delays of 0 to 3.75 ms is shown. Facilitation of subthreshold optical stimulation occurred when the subthreshold electrical stimulus delay was 0.75-3.75 ms. Compared to no delay ($t_d = 0 \mu\text{s}$), a significant reduction in relative electrical threshold was observed when $t_d \geq 750 \mu\text{s}$ ($p < 0.05$ ANOVA). Results from $n=9$ cochleae, errors bars show standard error.

In addition, electrophysiology recordings were performed on cultured spiral ganglion neurons from Chr2-H134R transgenic mice to examine spike shape and the post-stimulus facilitation period in single cells, using 1 ms optical pulses and 300 μs monophasic electrical pulses. For individually presented single pulses, there was a dramatic difference in the response of the neurons to subthreshold optical stimuli and subthreshold electrical stimuli. On average, spiral ganglion neurons responded to subthreshold electrical stimuli with sharp depolarisation followed by a rapid decay immediately after the cessation of electrical stimulus. In contrast, the response to subthreshold optical stimuli was a slower, smaller depolarisation which continued after the cessation of optical stimulus and returned to the resting membrane potential over 30-50 ms (**Figure 4(a)**).

Hybrid stimuli were then presented with a variable delay (electrical stimuli at 30-80% of single pulse threshold and optical stimuli from 80% to less than 100% of the hybrid threshold). Threshold stimulus was defined as the combined optical and electrical power levels where action potentials were evoked for at least 50% of the presented hybrid stimuli as described previously (Hart et al., 2020). Combined power levels presented were both above and below the hybrid stimulation threshold. When the electrical pulse preceded the optical pulse ($t_d < 0$), firing probability was less than 40%. Where the electrical pulse lagged the optical pulse ($t_d > 0$), the firing probability increased to a maximum (83%) for delays of 9 to 13 ms. Firing probability then decayed exponentially from the peak, falling below 50% firing probability when the electrical pulse was applied more than 30 ms after the start of the optical stimulus. Action potential facilitation (defined as 30 – 40% hybrid firing probability) persisted for up to 60 ms after the start of the optical stimulus (**Figure 4(b)**).

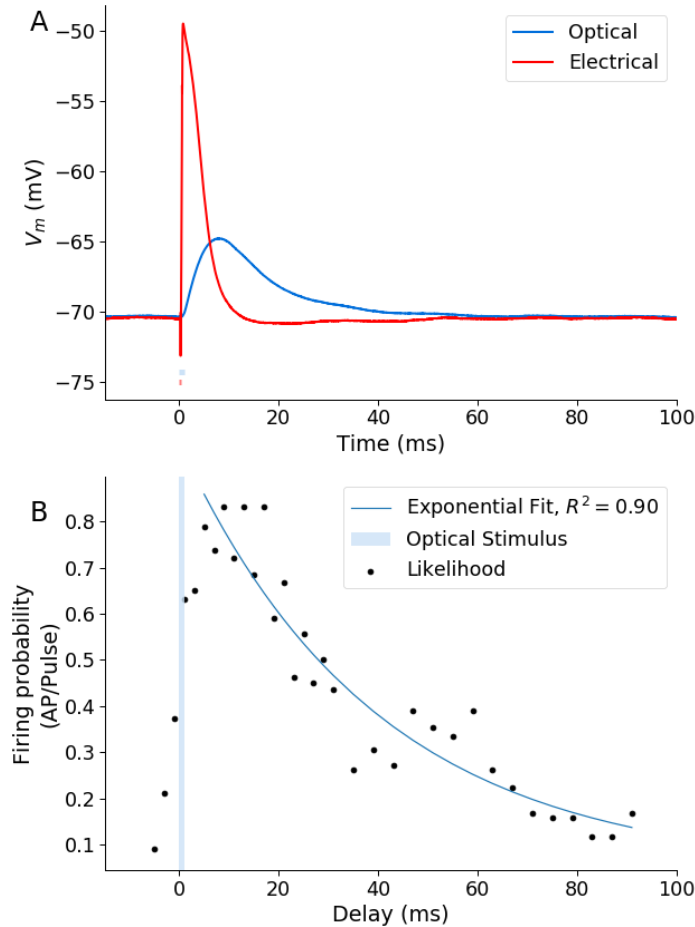


Figure 4. Post-stimulus facilitation during hybrid stimulation reflects the change in membrane potential of a subthreshold optical pulse.

(A) The average response of single spiral ganglion neurons to separate subthreshold electrical (red; 300 μ s) and subthreshold optical (blue; 1 ms) stimuli, with the pulses indicated below the response curves. The response to electrical stimuli showed a rapid depolarisation followed by a rapid decay after the cessation of stimulus. The response to the optical stimulus was a slow increase in membrane potential, peaking at approximately 8 ms after the cessation of stimulus, followed by a slow decay. **(B)** The probability of firing an action potential (AP) for a 1 ms subthreshold optical pulse (blue shaded region) and a 300 μ s subthreshold electrical pulse applied before or after the start of the optical pulse with varying delays ($n=4$ cells, 852 presented stimuli, electrical at 30-80% of threshold, optical from 80% to less than 100% of hybrid threshold). Each data point represents the mean firing probability across all presented hybrid stimulus intensities with at least five measurements. The line is an exponential decay curve fitted to the individual points where the delay $t_d \geq 5$ ($y = 0.92 \cdot \exp(-0.025x) + 0.04, R^2 = 0.9$). This suggests a decay time constant of $\tau = \frac{1}{0.025} = 40$ ms.

Entrainment rates

To evaluate the temporal fidelity of hybrid stimulation compared to optical-only stimulation we assessed the response in the IC to 300 ms bursts of stimuli presented at the cochlea. For this study, hybrid stimulation comprised suprathreshold optical stimulation and varying levels of subthreshold electrical stimulation in order to make direct rate-following comparisons to suprathreshold optical-

only stimulation. **Figure 5** shows an example raster plot from subthreshold electrical stimulation, suprathreshold optical only and hybrid stimulation (suprathreshold optical at 12.5 mW, subthreshold electrical at 140 Current Levels; CL, which was 83% of threshold). At 40 pps, the optical and hybrid stimuli had robust entrainment, but at 80 pps only the hybrid stimuli showed entrainment. At the maximum rate tested (240 pps), there were very few spikes recorded after the initial onset from the optical-only stimuli. By contrast, at 240 pps the hybrid stimulation was able to evoke responses over the whole 300 ms window.

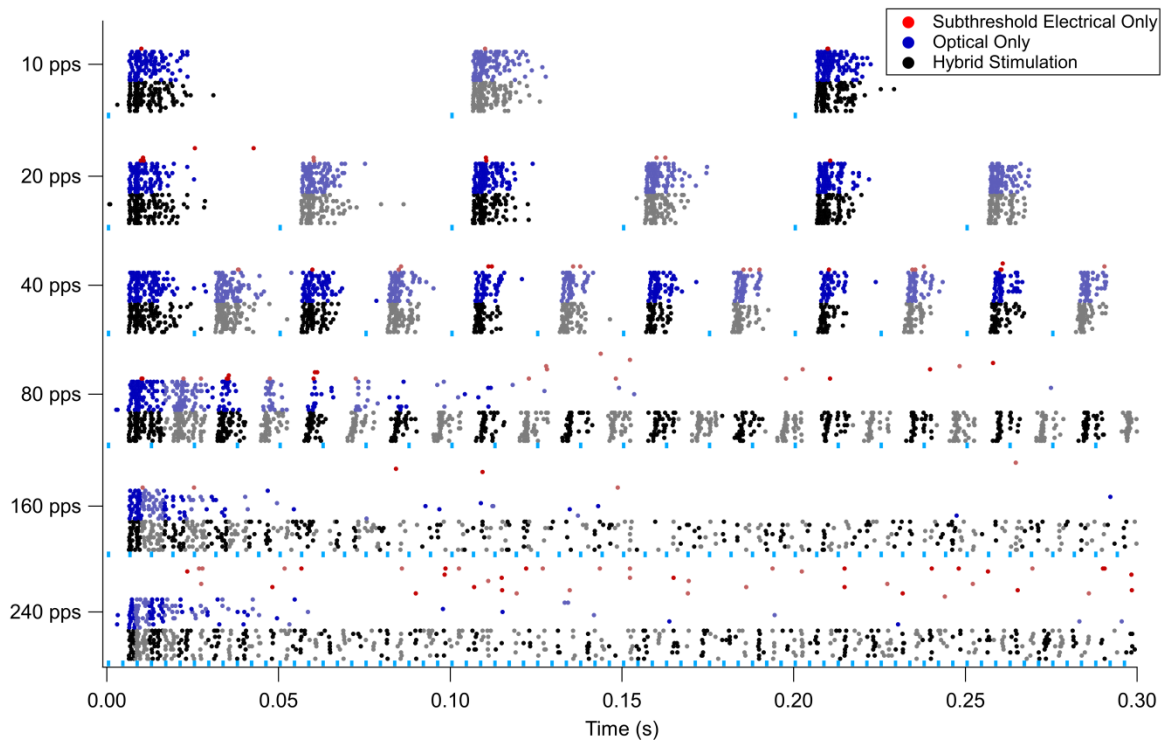


Figure 5. Improved entrainment achieved with hybrid stimulation compared to optical only stimulation at higher stimulation rates.

Raster plot comparing responses to subthreshold electrical stimulation, suprathreshold optical-only stimulation, and hybrid stimulation (suprathreshold optical, subthreshold electrical) presented at rates between 10 and 240 pulses per second (pps). The level used for the subelectrical pulses was that used for the hybrid stimulation. Laser pulses are shown in light blue bars underneath each pulse rate.

To better quantify the stimulation, the maximum following rate was found where 80% of triggers had at least one spike in response. To avoid overlapping windows at high pulse rates, a fixed 6-10 ms post stimuli window was used to count spikes. Maximum following rates were determined with suprathreshold optical and subthreshold electrical stimulation (typically at a level where the discrimination index (d') ≥ 2 level above threshold, where d' is a measure of sensitivity or discriminability derived from signal detection theory).

An example of the percent following for suprathreshold optical stimulation alone (9.75 mW) and hybrid stimulation (suprathreshold optical with increasing levels of electrical from 40% of threshold to 83% threshold) is shown in **Figure 6(a)**. As the electrical current was increased, the percent following increased and the maximum following rate shifted from 51 Hz to 122 Hz in this example.

Figure 6(b) shows the average increase in following rates when using hybrid stimulation compared to optical only (n=4). For these stimuli, electrical was always sub-threshold and optical was at a level to give $d' \geq 2$ above threshold. With hybrid stimulation a significantly greater maximum following rate of 111 Hz was achieved, compared to just 46 Hz for optical alone ($p < 0.05$; paired T-test, n=4).

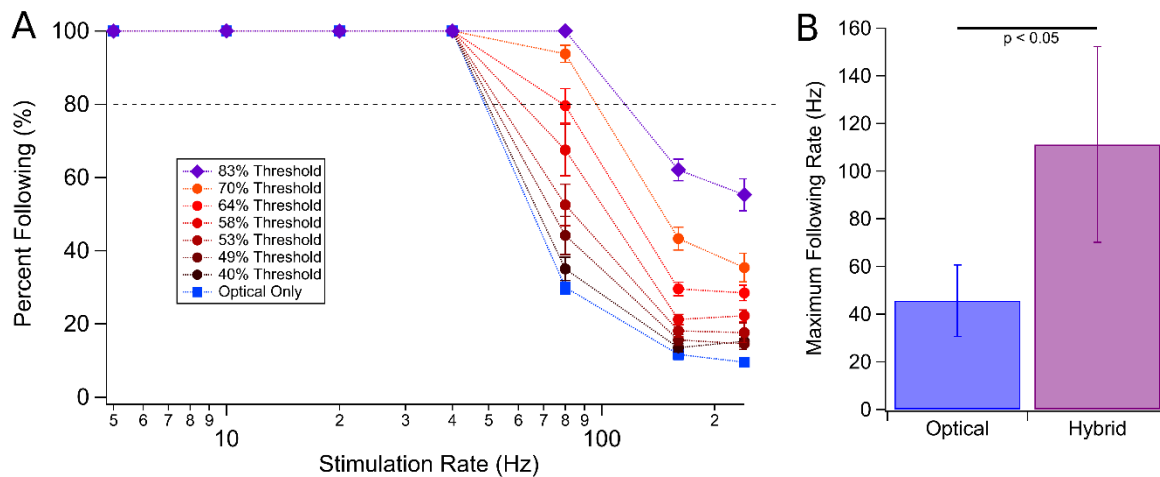


Figure 6. The average following rates are greater when using hybrid stimulation compared to using optical stimulation alone.

(A) Percent following for suprathreshold optical stimulation alone and hybrid stimulation comprising suprathreshold optical pulses (9.75 mW) with increasing levels of electrical current from 40% of threshold to 83% of threshold (where threshold was 150 CL) at rates of 5 – 240 Hz. In this example, at the best performing level of hybrid stimulation with subthreshold electrical, 55% of stimuli had at least one spike in response at 240 Hz (purple diamonds), while only 9.6% of stimuli had a response with optical only (blue squares). **(B)** Maximum following rate for optical and hybrid stimulation. The hybrid stimulation has a significantly higher maximum following rate (111 Hz) compared to optical alone (46 Hz; $p < 0.05$, n=4 cochlea, paired T-Test) Error bars show standard error.

Spread of activation

We next wanted to evaluate the efficacy of hybrid stimulation for improving the spectral resolution of activation compared to both electrical-only stimulation and optical-only stimulation. In this case hybrid stimulation consisted of a fixed level of subthreshold optical stimulation and varying levels of electrical stimulation from sub- to suprathreshold in order to make direct comparisons of excitation width to varying levels of electrical-only stimulation. An image of the spatial extent of evoked multi-unit activity across the recording array in the IC of a normal hearing Chr2-H134R transgenic mouse was generated in response to acoustic stimuli (n=1). Similar images were generated of the IC response in acutely deafened Chr2-H134R transgenic mice to electrical, optical and hybrid stimuli (n=9), with example responses shown in **Figure 7** to the four stimulation types. In each image the firing rate is indicated by colour, where black indicates spontaneous neural firing rate and yellow indicates the maximum firing rate. Optical stimulation pulses were 1 ms, biphasic electrical pulses were 250 μ s and hybrid stimulation used $t_d = 750 \mu$ s so the optical and electrical pulses ended together. **Figure 7(a)** shows a sharply tuned STC to a 28 kHz pure tone acoustic stimulus for a normal hearing Chr2-H134R transgenic mouse. **Figure 7(b-d)** present IC response images for basal turn electrical, hybrid and optical stimulation in an acutely deafened mouse, where the bonded optical fibre and platinum wire were inserted 2 mm through the round window membrane. All modalities resulted in the lowest thresholds at the more ventral recording electrodes, which is indicative of activation at the base of the cochlea.

Unlike acoustic stimulation, the extent of multiunit activity for electrical only and optical only stimulation increased with increasing stimulus intensity above threshold. Hybrid stimulation resulted in a narrow band of activation at the ventral recording sites but also high threshold activation at the more apical recording sites. Optical responses were not detected in mice that did not express ChR2-H134R (data not shown).

The spread of activation was compared for acoustic, optical, electrical and hybrid stimulation applied to the base of the cochlea. The width of excitation in the STC was assessed at intensities of levels of $d' = 1$ and $d' = 2$ above threshold to control for differences in linearity of stimuli as illustrated in **Figure 7(a-d)**. Electrical and optical stimulation resulted in activation in the IC that was spatially broader than acoustic stimulation. There was no significant difference between optical only and electrical only stimulation. In contrast, the width of activation in the IC was significantly reduced for hybrid stimulation compared to with electrical stimulation or optical-only stimulation at $d'=2$ ($p < 0.01$, ANOVA, $n=9$; **Figure 7(e)**).

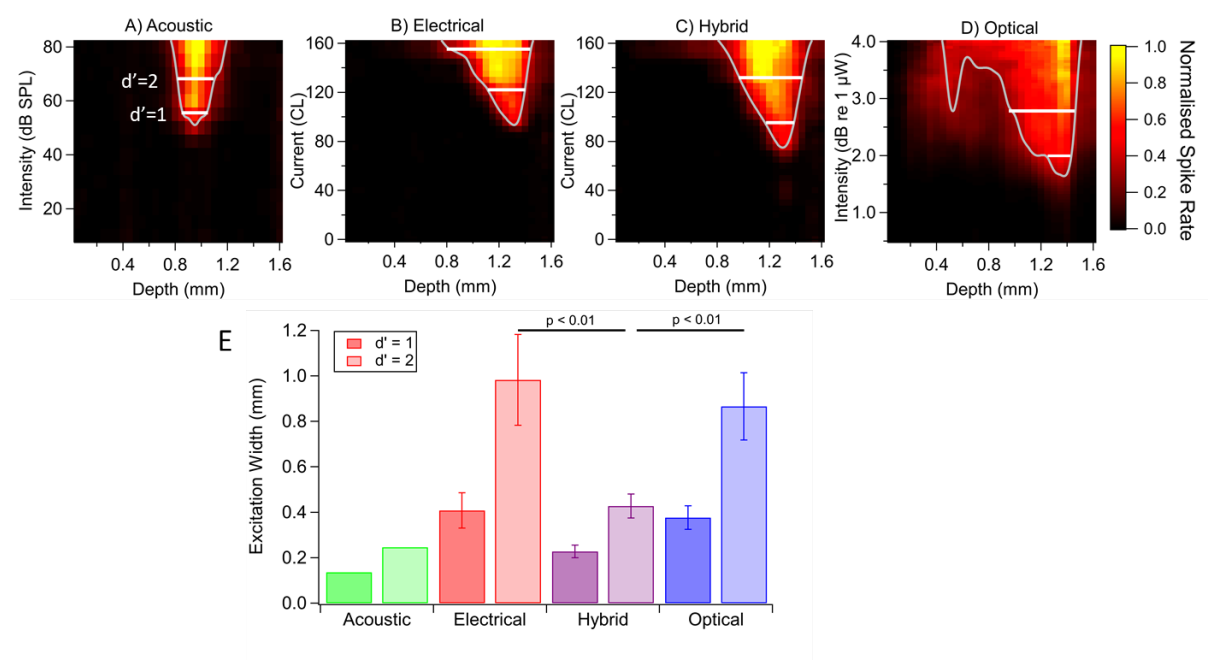


Figure 7. Hybrid stimulation significantly reduces spread of activation compared to electrical or optical-only stimulation at $d'=2$ above threshold.

Example of response images illustrating the spatial extent and rate of multi-unit activity across the recording sites of the recording array in the IC (measured as recording depth) in response to: **(A)** 28 kHz acoustic pure tones in a normal hearing mouse; and **(B-D)** 100 μ s/phase electrical stimuli, hybrid stimulation at highest optical level that remained subthreshold (25 μ W) with the electrical pulse delayed to finish with the optical pulse ($t_d = 750 \mu$ s) and 1 ms duration optical-only stimulation, all recorded from the same deafened mouse. Each point on the response images was normalized between the spontaneous activity rate (black) and maximum response (yellow). Optical power was converted from mW to a linear scale (dB referenced against 1 μ W) for comparison to the other modalities. The spatial tuning curve (STC; white line) was generated by connecting the stimulus levels that elicited 0.3 normalized responses on each IC recording site. The tip of the STC is the best threshold. Excitation widths were measured at $d'=1$ and $d'=2$ above threshold, as indicated. **(E)** Spread of activation for different stimulation modalities at $d' = 1$ and $d'=2$. Hybrid stimulation had significantly narrower activation in the IC when compared to optical and electrical alone at the $d' = 2$ level ($p < 0.01$, RM ANOVA, $n=9$) Error bars show standard error. CL = current levels.

Discussion

In this study we demonstrated that hybrid stimulation in the cochlea, i.e. the combination of optogenetic and electrical stimulation when one or both modalities were at sub-threshold levels, significantly improved the spectral resolution of neural activation compared to electrical-only and optical-only stimulation *and* maximum following rate compared to optical-only stimulation. The combination of sub-threshold electrical and sub-threshold optical stimuli resulted in activation of the auditory pathway *in vivo* and within individual spiral ganglion neurons *in vitro*, thus reducing the optical radiance required for neural activation compared to optical-only stimulation. This facilitation was most apparent when the electrical stimulus was delayed with respect to the start of the optical pulse and could extend beyond the completion of the optical pulse, indicating post stimulus facilitation with optical stimuli. These results suggest that hybrid stimulation can be used to improve temporal fidelity in neurons expressing opsin ion channels while improving spectral resolution.

Hybrid stimulation

Our data shows that sub-threshold optical stimulation and sub-threshold electrical stimulation can be combined to result in action potentials in auditory neurons *in vitro* using shorter stimuli than our previous work on auditory neurons (Hart et al., 2020), and activation of the auditory pathway *in vivo* which has not been reported before. Hybrid stimuli have been examined previously for the rodent sciatic nerve where sub-threshold electrical stimuli were combined with either sub-threshold infrared neural stimulation (INS) or optogenetic-mediated blue light to result in muscle activation (Duke et al., 2009, Kapur et al., 2016), reducing the radiant energy required for neural activation (Duke et al., 2012b). For INS, the hybrid stimulation effect was maximal when the pulses were applied simultaneously or when the pulses ended at the same time (Duke et al., 2009, Duke et al., 2012b). This contrasts to the timing for maximum probability of hybrid activation in the cochlea of our optogenetic mice, where peak multiunit activity in the IC occurred when a delay of 2 ms was applied between the start of the optical pulse and the start of the subsequent electrical pulse *in vivo*. This difference reflects the different mechanisms of activation of INS and optogenetic stimulation, whereby the closing kinetics of the ChR2-H134R ion channel ($\tau_{off} \sim 18$ ms) influences the period of excitability of the neuron.

We used patch clamp electrophysiology to understand hybrid stimulation mechanisms at the cellular level. Our data showed the rate of repolarisation following the optical stimulus was reduced relative to electrical-only stimulation due to persistent photocurrents beyond the optical pulse. Post-stimulus facilitation in single auditory neurons extended to delays of 9-13 ms between the optical and electrical stimuli *in vitro*, which is greater than the facilitation observed *in vivo*. Dynamics and firing rates are generally slower *in vitro*, as found previously for electrical stimulation (Wright et al., 2016). Despite these differences, the observed facilitation both *in vitro* and *in vivo* suggests that cultured SGNs are a good *in vitro* model for hybrid optical stimulation. Post-stimulus facilitation, or summation, is also seen with electrical-only stimulation, although the facilitation was much less persistent for electrical-only stimulation compared to hybrid stimulation (Hart et al., 2020). In the cat, facilitation is described for a sub-threshold electrical pulse followed by another electrical pulse with inter pulse intervals of less than 1 ms (Cartee et al., 2000) and with high rate stimulation in the guinea pig, where significantly reduced thresholds were observed, indicative of interactions between pulses (Heffer et al., 2010).

A key benefit of combining optical stimulation with electrical stimulation is the reduced optical radiance required to activate neurons compared to optical-only stimulation. This is important when considering the overall safety of optical stimulation in the cochlea and potential issues with phototoxicity and thermal trauma. Phototoxicity is dependent on the wavelength of the light, with blue light considered more harmful than red. While the phototoxicity of both blue and red light has been found to be low-risk for brain tissue at stimulation levels in excess of those considered here (Senova et al., 2017), the effect of life-long optical stimulation is unknown. Heating considerations in the confined space of the cochlea will be dependent on the ultimate design of an optical cochlear implant. For a micro-LED-based system, a temperature increase of less than 0.5 °C was observed in

brain tissue at rates of 500 Hz using light intensities far in excess of those required to activate opsin-expressing neurons (McAlinden et al., 2013). Thresholds for optogenetics-based stimulation in the auditory system vary depending on the optical fibre diameter, the opsin and its expression levels. Therefore, there is a wide range of radiant exposure levels reported for neural activation (reviewed in (Richardson et al., 2020)). Hybrid stimulation will increase overall safety of optical stimulation by lowering the required radiant flux due to reduced thresholds of activation and the extended period of excitability beyond the optical pulse during which electrical stimuli can be used to activate neurons.

Entrainment rates

One limitation of optogenetics-based optical stimulation methods is low temporal fidelity which is dictated by the opening and closing kinetics and post-stimulus refraction periods of each opsin. The maximal stimulation rate is dependent on neural subtype but is approximately 70 Hz for wild-type ChR2 *in vivo* (Hernandez et al., 2014). This is problematic for the auditory system in which complex-tone pitch is encoded not only by place of excitation but also by the stimulus repetition rate. Cochlear implant recipients can typically discriminate up to 300 Hz (reviewed in (Zeng, 2004)), but no benefit in speech perception was observed beyond 500 Hz (Shannon et al., 2011). One solution is to use opsins with fast on-off channel kinetics such as Chronos which significantly improved spike probability and increased stimulation rates in the cochlea, with an average 50% spike probability at approximately 150 Hz and some neurons following the optical stimulus up to several hundred Hz (Mager et al., 2018, Keppeler et al., 2018, Duarte et al., 2018). As an alternative solution, the results presented here indicate that hybrid stimulation, whereby optical pulses are used to prime the spiral ganglion neurons and sub or suprathreshold electrical stimuli are used to activate the neurons, can boost the maximum following rate of auditory neurons expressing the ChR2-H134R opsin. Our data indicated a 2.4-fold increase in maximum following rate, a key measure of temporal fidelity, while lowering the radiance thresholds required for neuronal activation. The resulting maximum entrainment rates are similar to electrical stimulation in acutely deafened animals (Vollmer et al., 1999). If the effect of hybrid stimulation on entrainment rate can be extrapolated to other opsins, the number of candidate opsins that could be used for activation of the auditory system at rates up to 300-500 Hz can be expanded beyond Chronos alone. For example, the red-shifted ChR2 ET/TC also has high photocurrents and $\tau_{\text{off}} \sim 8$ ms (Berndt et al., 2011).

Vector strength or synchronisation index measurements were not used in this study as these are most suited to analysing ongoing responses, particularly in the presence of significant background or resting activity. The raster plot in Figure 5 illustrates the responses we recorded were more reminiscent of 'on-set' responses, with a burst of activity to each stimulus clearly evident at low frequencies. We therefore believe that the maximum entrainment rate analysis utilised here is most appropriate for this study in which we focussed on spread of activation and the ability to entrain to pulses.

Spread of activation

We did not observe any difference in the spread of activation between optical-only and electrical-only stimulation in this study. This contrasts with other studies which have shown statistically narrower STCs for optical-only stimulation compared to monopolar stimulation and bipolar stimulation (Dieter et al., 2019, Richter et al., 2011). There are a number of key differences between this and other studies which may account for this discrepancy. One of these is the angle of the fibre placement which may be influenced by the animal model. In the gerbil, the angle of the fibre placement at the round window membrane was found to affect STCs, which was suggested to be a result of some fibre angles causing light to penetrate through to more apical cochlear tissue (Dieter et al., 2019). In our study, the angle of fibre placement did not influence the STC (data not shown), but our findings are in agreement with a Monte Carlo ray tracing simulation which suggests that high intensity irradiance at the basal turn of the cochlea using a non-optimised fibre placement results in activation of apical neurons (Wrobel et al., 2018). Another difference between our study and the Dieter study (Dieter et al., 2019) lies in the relative placement and nature of the light and electrical stimuli. We used a hybrid device where the

optical fibre and platinum wire were bonded together and thus provided directly comparable stimuli in terms of place and depth of insertion whereas the Dieter study used separate devices where there may be differences in the distance between the stimulus and the neurons. Furthermore, our results may be skewed towards electrical stimulation as the fine 25 μm platinum wire that we used provided a more punctate source than traditional cochlear implants and was compared to a sub-optimal light stimulus due to the forward emitting optical fibre. In the gerbil model, opsin expression in neurons was achieved by viral-based gene therapy in which approximately 30% of neurons were transfected to varying degrees throughout the cochlea (Wrobel et al., 2018). In our heterozygous transgenic mouse model, all spiral ganglion neurons express ChR2-H134 with expression levels dictated by the parvalbumin promoter. Expression levels have been suggested to influence photosensitivity (Meng et al., 2019) which would affect activation thresholds and therefore spread of activation.

Suprathreshold optical stimulation in the basal cochlear turn resulted in low threshold activation of the layer of the IC corresponding to the basal region of the cochlea, but also high threshold activation corresponding to more apical areas, suggestive of penetration or scattering of the light beyond the basal site of stimulation. When we combined optical and electrical modalities we observed a significant reduction in the spread of activation compared to optical-only stimulation at d' values of 2 above threshold. This may be explained by the reduced strength of the optical radiance used during hybrid stimulation which would result in lower penetration of the light to the more apical regions. With the electrical stimulating level also being very low during hybrid stimulation, the overall result is a reduced spread of activation. This effect cannot be achieved with electrical-only stimulation as a certain number of neurons need to be activated for the sound to be perceived. Alternatively, it is possible that optical activation of the neurons is occurring centrally as well as at the peripheral fibres. The ChR2-H134 ion channel was expressed in the peripheral and central fibres and the cell body of spiral ganglion neurons. Thus an optical fibre positioned in the basal turn could activate the passing central fibres of spiral ganglion neurons from more apical cochlear regions, impacting the excitation pattern observed in the IC. This is assumed to occur for electrical stimulation as well (Cartee et al., 2000), in contrast to acoustic stimulation which occurs at the synaptic membrane.

The relative placement of the optical emitter and electrode *in vivo* could impact on the degree of interaction between the optical and electrical stimuli. In this study, the platinum wire was glued to the optical fibre so that they were in the same position in the cochlea. However, the optical fibre is orientation dependent, whereas the platinum wire is not. As the optical fibre is inserted through the round window membrane, the light path is suboptimal which would impact on the recruitment of auditory nerve fibres, as found previously (Duke et al., 2012a, Dieter et al., 2019, Wrobel et al., 2018). Recent development of high density optical cochlear implants is based on LED chips or thin-film micro-LEDs in which the light is directed toward the cochlear modiolus where the spiral ganglion cell bodies are situated (Klein et al., 2018), with modelling suggesting that more optimised light sources such as these can have a significant impact on spectral resolution (Wrobel et al., 2018). In a device such as this, optimum hybrid activation will require the electrodes to be positioned close to each LED in alternating positions.

Limitations of the study

This study examined optical and electrical interactions during hybrid stimulation in the cochlea using acute electrophysiology procedures. While the depth of the recording electrode was not controlled between animals, the average data presented for spread of activation is directly comparable as all conditions were recorded within each animal and compared by RM ANOVA. More study will be required to determine how the findings will translate to a chronically-implanted and stimulated animal where a number of other factors may influence the outcomes, such as changes in optical or electrical thresholds over time and tissue capsule formation. We also used a device containing only a single optical and single electrical channel. Spread of activation will need to be studied with a multi-channel device where channel interactions can be measured, while further measures of temporal fidelity will need to be examined via single auditory nerve recordings. Reduced channel interactions and greater

temporal fidelity will be required in order to increase the spatio-temporal resolution of a cochlear implant, whereby more information about the temporal fine structure of the stimulus can be delivered across the cochlea. It should be acknowledged that, as it stands, the overall power required for hybrid stimulation will be higher than an electrical-only cochlear implant. As such, there may be a need to weigh the benefits of improved spatio-temporal resolution against potentially higher power consumption.

In this study the mice were deafened acutely prior to recordings and it is not known how the results will translate to long-term deafness where there can be ongoing degeneration of peripheral fibres and loss of spiral ganglion neurons. The effectiveness of the neomycin deafening technique was verified in a subset of mice by histology that was performed two weeks after neomycin exposure. Therefore, the possibility of a confounding effect of residual hearing on the results, such as photoacoustic and/or electrophonic effects cannot be entirely ruled out in these *in vivo* experiments. It is notoriously difficult to completely ablate hair cells in animal models of deafness, and a direct comparison of electrical stimulation thresholds in other studies (e.g. (Irving et al., 2013)) is confounded by differences in electrode geometry. However, mice that do not express ChR2-H134R and that are deafened via the same technique do not exhibit responses in the inferior colliculus to the stimulus parameters used in this study (data not shown). Finally, it should be noted that we used a transgenic mouse model where all neurons express ChR2-H134R. The findings will need to be verified in mice that have been modified via a clinically-translatable method such as viral gene therapy where there is likely to be fewer transfected spiral ganglion neurons and variability in the expression levels in the spiral ganglion neuron population.

Conclusions

Electrical stimulation is used by contemporary cochlear implants to activate neurons with high temporal fidelity, power efficiency and safety. However, it is almost impossible to achieve high spectro-temporal control because responsive regions overlap spatially and this in turn results in poor pitch discrimination of complex tones. Optical stimulation has the potential to deliver high spatial precision, but many optogenetic ion channels have poor temporal kinetics, require high optical radiance and presently have an unknown long-term safety record. Our results suggest that hybrid stimulation has improved temporal precision compared to optical stimulation alone, and greater spectral resolution than electrical stimulation alone. Therefore, this approach has the potential to increase the number of perceptually independent stimulating channels through reduced channel interactions, while reducing the overall light exposure levels and the associated risks of phototoxicity and thermal trauma.

Acknowledgements

The authors acknowledge the technical support provided by Trung Nguyen, Brianna Flynn, Ella Trang, Caitlin Singleton, James Firth and Louise Rooney. Transgenic mice used in this study were generously donated by Prof Heather Young (University of Melbourne) and Prof Steven Petrou (The Florey Institute of Neuroscience and Mental Health). Viral vectors were provided by Prof Karl Deisseroth.

This work is supported by Action on Hearing Loss International Project Grant G89 and the ARC Training Centre in Biodevices (IC140100023). William Hart is supported by an Australian Government Research Training Program (RTP) Scholarship. The Bionics Institute acknowledges the support it receives from the Victorian Government through its Operational Infrastructure Support Program.

Competing interests

The authors declare that a provisional patent has been filed in this area.

Author contributions

Conception and study design: RR, AW, JF, KN, PS

IC recordings, data analysis: AT, RR, JF

In vitro electrophysiology recordings and analysis: WH, KN

Histology: RR, NG

Writing and analysis: All authors

References

- Baumhoff, P, Kallweit, N & Kral, A 2019. Intracochlear near infrared stimulation: Feasibility of optoacoustic stimulation in vivo. *Hear Res*, 371, 40-52.
- Berenstein, CK, Mens, LH, Mulder, JJ & Vanpoucke, FJ 2008. Current steering and current focusing in cochlear implants: comparison of monopolar, tripolar, and virtual channel electrode configurations. *Ear Hear*, 29, 250-60.
- Berg, KA, Noble, JH, Dawant, BM, Dwyer, RT, Labadie, RF & Gifford, RH 2019. Speech recognition as a function of the number of channels in perimodiolar electrode recipients. *J Acoust Soc Am*, 145, 1556.
- Berndt, A, Schoenenberger, P, Mattis, J, Tye, KM, Deisseroth, K, Hegemann, P & Oertner, TG 2011. High-efficiency channelrhodopsins for fast neuronal stimulation at low light levels. *Proc Natl Acad Sci U S A*, 108, 7595-600.
- Bierer, JA 2007. Threshold and channel interaction in cochlear implant users: evaluation of the tripolar electrode configuration. *J Acoust Soc Am*, 121, 1642-53.
- Bierer, JA & Litvak, L 2016. Reducing Channel Interaction Through Cochlear Implant Programming May Improve Speech Perception: Current Focusing and Channel Deactivation. *Trends Hear*, 20.
- Bierer, JA & Middlebrooks, JC 2004. Cortical responses to cochlear implant stimulation: channel interactions. *J Assoc Res Otolaryngol*, 5, 32-48.
- Black, RC, Clark, GM & Patrick, JF 1981. Current distribution measurements within the human cochlea. *IEEE Trans Biomed Eng*, 28, 721-5.
- Cartee, LA, Van Den Honert, C, Finley, CC & Miller, RL 2000. Evaluation of a model of the cochlear neural membrane. I. Physiological measurement of membrane characteristics in response to intrameatal electrical stimulation. *Hear Res*, 146, 143-52.
- Croghan, NBH, Duran, SI & Smith, ZM 2017. Re-examining the relationship between number of cochlear implant channels and maximal speech intelligibility. *J Acoust Soc Am*, 142, EL537.
- Dieter, A, Duque-Afonso, CJ, Rankovic, V, Jeschke, M & Moser, T 2019. Near physiological spectral selectivity of cochlear optogenetics. *Nature Communications*, 10, 1962.
- Donaldson, GS, Kreft, HA & Litvak, L 2005. Place-pitch discrimination of single- versus dual-electrode stimuli by cochlear implant users (L). *J Acoust Soc Am*, 118, 623-6.
- Duarte, MJ, Kanumuri, VV, Landegger, LD, Tarabichi, O, Sinha, S, Meng, X, Hight, AE, Kozin, ED, Stankovic, KM, Brown, MC & Lee, DJ 2018. Ancestral Adeno-Associated Virus Vector Delivery of Opsins to Spiral Ganglion Neurons: Implications for Optogenetic Cochlear Implants. *Mol Ther*, 26, 1931-1939.
- Duke, AR, Cayce, JM, Malphrus, JD, Konrad, P, Mahadevan-Jansen, A & Jansen, ED 2009. Combined optical and electrical stimulation of neural tissue in vivo. *J Biomed Opt*, 14, 060501.
- Duke, AR, Lu, H, Jenkins, MW, Chiel, HJ & Jansen, ED 2012a. Spatial and temporal variability in response to hybrid electro-optical stimulation. *J Neural Eng*, 9, 036003.
- Duke, AR, Peterson, E, Mackanos, MA, Atkinson, J, Tyler, D & Jansen, ED 2012b. Hybrid electro-optical stimulation of the rat sciatic nerve induces force generation in the plantarflexor muscles. *J Neural Eng*, 9, 066006.
- Erfanian Saeedi, N, Blamey, PJ, Burkitt, AN & Grayden, DB 2017. An integrated model of pitch perception incorporating place and temporal pitch codes with application to cochlear implant research. *Hear Res*, 344, 135-147.

Fishman, KE, Shannon, RV & Slattery, WH 1997. Speech recognition as a function of the number of electrodes used in the SPEAK cochlear implant speech processor. *J Speech Lang Hear Res*, 40, 1201-15.

Friesen, LM, Shannon, RV, Baskent, D & Wang, X 2001. Speech recognition in noise as a function of the number of spectral channels: comparison of acoustic hearing and cochlear implants. *J Acoust Soc Am*, 110, 1150-63.

Fu, QJ, Shannon, RV & Wang, X 1998. Effects of noise and spectral resolution on vowel and consonant recognition: acoustic and electric hearing. *J Acoust Soc Am*, 104, 3586-96.

George, SS, Wise, AK, Fallon, JB & Shepherd, RK 2015. Evaluation of focused multipolar stimulation for cochlear implants in long-term deafened cats. *J Neural Eng*, 12, 036003.

George, SS, Wise, AK, Shivdasani, MN, Shepherd, RK & Fallon, JB 2014. Evaluation of focused multipolar stimulation for cochlear implants in acutely deafened cats. *J Neural Eng*, 11, 065003.

Guan, T, Zhu, K, Chen, F, He, Y, Wang, J, Wu, M & Nie, G 2015. Auditory nerve impulses induced by 980 nm laser. *J Biomed Opt*, 20, 88004.

Hart, WL, Richardson, RT, Kameneva, T, Thompson, AC, Wise, AK, Fallon, JB, Stoddart, PR & Needham, K 2020. Combined optogenetic and electrical stimulation of auditory neurons increases effective stimulation frequency-an in vitro study. *J Neural Eng*, 17, 016069.

Heffer, LF, Sly, DJ, Fallon, JB, White, MW, Shepherd, RK & O'leary, SJ 2010. Examining the auditory nerve fiber response to high rate cochlear implant stimulation: chronic sensorineural hearing loss and facilitation. *J Neurophysiol*, 104, 3124-35.

Hernandez, VH, Gehrt, A, Reuter, K, Jing, Z, Jeschke, M, Mendoza Schulz, A, Hoch, G, Bartels, M, Vogt, G, Garnham, CW, Yawo, H, Fukazawa, Y, Augustine, GJ, Bamberg, E, Kugler, S, Salditt, T, De Hoz, L, Strenzke, N & Moser, T 2014. Optogenetic stimulation of the auditory pathway. *Journal of Clinical Investigation*, 124, 1114-29.

Irving, S, Trotter, MI, Fallon, JB, Millard, RE, Shepherd, RK & Wise, AK 2013. Cochlear implantation for chronic electrical stimulation in the mouse. *Hear Res*, 306, 37-45.

Izzo, AD, Suh, E, Pathria, J, Walsh, JT, Whitlon, DS & Richter, CP 2007. Selectivity of neural stimulation in the auditory system: a comparison of optic and electric stimuli. *J Biomed Opt*, 12, 021008.

Kallweit, N, Baumhoff, P, Krueger, A, Tinne, N, Kral, A, Ripken, T & Maier, H 2016. Optoacoustic effect is responsible for laser-induced cochlear responses. *Sci Rep*, 6, 28141.

Kapur, SK, Richner, TJ, Brodnick, SK, Williams, JC & Poore, SO 2016. Optical Feedback Control and Electrical-Optical Costimulation of Peripheral Nerves. *Plast Reconstr Surg*, 138, 451e-60e.

Keppeler, D, Merino, RM, Lopez De La Morena, D, Bali, B, Huet, AT, Gehrt, A, Wrobel, C, Subramanian, S, Dombrowski, T, Wolf, F, Rankovic, V, Neef, A & Moser, T 2018. Ultrafast optogenetic stimulation of the auditory pathway by targeting-optimized Chronos. *EMBO J*.

Klapoetke, NC, Murata, Y, Kim, SS, Pulver, SR, Birdsey-Benson, A, Cho, YK, Morimoto, TK, Chuong, AS, Carpenter, EJ, Tian, Z, Wang, J, Xie, Y, Yan, Z, Zhang, Y, Chow, BY, Surek, B, Melkonian, M, Jayaraman, V, Constantine-Paton, M, Wong, GK & Boyden, ES 2014. Independent optical excitation of distinct neural populations. *Nature methods*, 11, 338-46.

Klein, E, Gossler, C, Paul, O & Ruther, P 2018. High-Density muLED-Based Optical Cochlear Implant With Improved Thermomechanical Behavior. *Front Neurosci*, 12, 659.

Kral, A, Hartmann, R, Mortazavi, D & Klinke, R 1998. Spatial resolution of cochlear implants: the electrical field and excitation of auditory afferents. *Hear Res*, 121, 11-28.

Landry, TG, Fallon, JB, Wise, AK & Shepherd, RK 2013. Chronic neurotrophin delivery promotes ectopic neurite growth from the spiral ganglion of deafened cochleae without compromising the spatial selectivity of cochlear implants. *J Comp Neurol*, 521, 2818-2832.

Landsberger, DM & Srinivasan, AG 2009. Virtual channel discrimination is improved by current focusing in cochlear implant recipients. *Hear Res*, 254, 34-41.

Mager, T, Lopez De La Morena, D, Senn, V, Schlotte, J, A, DE, Feldbauer, K, Wrobel, C, Jung, S, Bodensiek, K, Rankovic, V, Browne, L, Huet, A, Juttner, J, Wood, PG, Letzkus, JJ, Moser, T & Bamberg,

E 2018. High frequency neural spiking and auditory signaling by ultrafast red-shifted optogenetics. *Nat Commun*, 9, 1750.

Mcalinden, N, Massoubre, D, Richardson, E, Gu, E, Sakata, S, Dawson, MD & Mathieson, K 2013. Thermal and optical characterization of micro-LED probes for in vivo optogenetic neural stimulation. *Opt Lett*, 38, 992-4.

Mcdermott, HJ 2004. Music perception with cochlear implants: a review. *Trends Amplif*, 8, 49-82.

Meng, X, Murali, S, Cheng, Y, Lu, J, Hight, AE, Kanumuri, VV, Brown, MC, Holt, JR, Lee, DJ & Edge, ASB 2019. Increasing the Expression Level of ChR2 Enhances the Optogenetic Excitability of Cochlear Neurons. *J Neurophysiol*.

O'leary, SJ, Richardson, RT & Mcdermott, HJ 2009. Principles of design and biological approaches for improving the selectivity of cochlear implant electrodes. *J Neural Eng*, 6, 55002.

Richardson, RT, Ibbotson, MR, Thompson, AC, Wise, AK & Fallon, JB 2020. Optical stimulation of neural tissue. *Healthcare Technology Letters*, (accepted).

Richter, CP, Bayon, R, Izzo, AD, Otting, M, Suh, E, Goyal, S, Hotaling, J & Walsh, JT, Jr. 2008. Optical stimulation of auditory neurons: effects of acute and chronic deafening. *Hear Res*, 242, 42-51.

Richter, CP, Rajguru, SM, Matic, AI, Moreno, EL, Fishman, AJ, Robinson, AM, Suh, E & Walsh, JT 2011. Spread of cochlear excitation during stimulation with pulsed infrared radiation: inferior colliculus measurements. *J Neural Eng*, 8, 056006.

Schultz, M, Baumhoff, P, Maier, H, Teudt, IU, Kruger, A, Lenarz, T & Kral, A 2012. Nanosecond laser pulse stimulation of the inner ear-a wavelength study. *Biomed Opt Express*, 3, 3332-45.

Senova, S, Scisniak, I, Chiang, CC, Doignon, I, Palfi, S, Chaillet, A, Martin, C & Pain, F 2017. Experimental assessment of the safety and potential efficacy of high irradiance photostimulation of brain tissues. *Sci Rep*, 7, 43997.

Shannon, RV, Cruz, RJ & Galvin, JJ, 3rd 2011. Effect of stimulation rate on cochlear implant users' phoneme, word and sentence recognition in quiet and in noise. *Audiol Neurootol*, 16, 113-23.

Smith, ZM, Delgutte, B & Oxenham, AJ 2002. Chimaeric sounds reveal dichotomies in auditory perception. *Nature*, 416, 87-90.

Snyder, RL, Bierer, JA & Middlebrooks, JC 2004. Topographic spread of inferior colliculus activation in response to acoustic and intracochlear electric stimulation. *J Assoc Res Otolaryngol*, 5, 305-22.

Srinivasan, AG, Shannon, RV & Landsberger, DM 2012. Improving virtual channel discrimination in a multi-channel context. *Hear Res*, 286, 19-29.

Tan, X, Jahan, I, Xu, Y, Stock, S, Kwan, CC, Soriano, C, Xiao, X, Garcia-Anoveros, J, Fritsch, B & Richter, CP 2018. Auditory Neural Activity in Congenitally Deaf Mice Induced by Infrared Neural Stimulation. *Sci Rep*, 8, 388.

Teudt, IU, Maier, H, Richter, CP & Kral, A 2011. Acoustic events and "optophonic" cochlear responses induced by pulsed near-infrared laser. *IEEE Trans Biomed Eng*, 58, 1648-55.

Thompson, A, Wade, S, Pawsey, N & Stoddart, P 2013. Infrared Neural Stimulation: Influence of stimulation site spacing and repetition rates on heating. *IEEE transactions on bio-medical engineering*.

Thompson, AC, Fallon, JB, Wise, AK, Wade, SA, Shepherd, RK & Stoddart, PR 2015. Infrared neural stimulation fails to evoke neural activity in the deaf guinea pig cochlea. *Hear Res*, 324, 46-53.

Verma, RU, Guex, AA, Hancock, KE, Durakovic, N, McKay, CM, Slama, MC, Brown, MC & Lee, DJ 2014. Auditory responses to electric and infrared neural stimulation of the rat cochlear nucleus. *Hear Res*, 310, 69-75.

Vollmer, M, Snyder, RL, Leake, PA, Beitel, RE, Moore, CM & Rebscher, SJ 1999. Temporal properties of chronic cochlear electrical stimulation determine temporal resolution of neurons in cat inferior colliculus. *J Neurophysiol*, 82, 2883-902.

Wang, J, Lu, J & Tian, L 2016. Effect of Fiberoptic Collimation Technique on 808 nm Wavelength Laser Stimulation of Cochlear Neurons. *Photomed Laser Surg*, 34, 252-7.

Wilson, BS & Dorman, MF 2008. Cochlear implants: a remarkable past and a brilliant future. *Hear Res*, 242, 3-21.

Wright, T, Gillespie, LN, O'leary, SJ & Needham, K 2016. Firing frequency and entrainment maintained in primary auditory neurons in the presence of combined BDNF and NT3. *Sci Rep*, 6, 28584.

Wrobel, C, Dieter, A, Huet, A, Keppeler, D, Duque-Afonso, CJ, Vogl, C, Hoch, G, Jeschke, M & Moser, T 2018. Optogenetic stimulation of cochlear neurons activates the auditory pathway and restores auditory-driven behavior in deaf adult gerbils. *Science Translational Medicine*, 10, eaao0540.

Zeng, FG 2004. Trends in cochlear implants. *Trends Amplif*, 8, 1-34.