



Minerva Access is the Institutional Repository of The University of Melbourne

Author/s:

Beringer, J;Moore, CE;Cleverly, J;Campbell, DI;Cleugh, H;De Kauwe, MG;Kirschbaum, MUF;Griebel, A;Grover, S;Huete, A;Hutley, LB;Laubach, J;Van Niel, T;Arndt, SK;Bennett, AC;Cernusak, LA;Eamus, D;Ewenz, CM;Goodrich, JP;Jiang, M;Hinko-Najera, N;Isaac, P;Hobeichi, S;Knauer, J;Koerber, GR;Liddell, M;Ma, X;Macfarlane, C;McHugh, ID;Medlyn, BE;Meyer, WS;Norton, AJ;Owens, J;Pitman, A;Pendall, E;Prober, SM;Ray, RL;Restrepo-Coupe, N;Rifai, SW;Rowlings, D;Schipper, L;Silberstein, RP;Teckentrup, L;Thompson, SE;Ukkola, AM;Wall, A;Wang, YP;Wardlaw, TJ;Woodgate, W

Title:

Bridge to the future: Important lessons from 20 years of ecosystem observations made by the OzFlux network

Date:

2022-06-01

Citation:

Beringer, J., Moore, C. E., Cleverly, J., Campbell, D. I., Cleugh, H., De Kauwe, M. G., Kirschbaum, M. U. F., Griebel, A., Grover, S., Huete, A., Hutley, L. B., Laubach, J., Van Niel, T., Arndt, S. K., Bennett, A. C., Cernusak, L. A., Eamus, D., Ewenz, C. M., Goodrich, J. P., ... Woodgate, W. (2022). Bridge to the future: Important lessons from 20 years of ecosystem observations made by the OzFlux network. *Global Change Biology*, 28 (11), pp.3489-3514. <https://doi.org/10.1111/gcb.16141>.

Persistent Link:

<https://hdl.handle.net/11343/308572>

License:

[CC BY](#)

REVIEW

Bridge to the future: Important lessons from 20 years of ecosystem observations made by the OzFlux network

Jason Beringer¹  | Caitlin E. Moore^{1,2}  | Jamie Cleverly^{3,4,5}  | David I. Campbell⁶  | Helen Cleugh⁷ | Martin G. De Kauwe^{8,9,10}  | Miko U. F. Kirschbaum¹¹  | Anne Griebel¹²  | Sam Grover¹³  | Alfredo Huete¹⁴  | Lindsay B. Hutley¹⁵  | Johannes Laubach¹⁶  | Tom Van Niel¹⁷  | Stefan K. Arndt¹⁸  | Alison C. Bennett¹⁸  | Lucas A. Cernusak³  | Derek Eamus⁵  | Cacilia M. Ewenz^{19,20}  | Jordan P. Goodrich⁶ | Mingkai Jiang¹²  | Nina Hinko-Najera²¹  | Peter Isaac^{18,20} | Sanaa Hobeichi^{9,10}  | Jürgen Knauer^{7,12}  | Georgia R. Koerber²²  | Michael Liddell⁴  | Xuanlong Ma²³  | Craig Macfarlane²⁴ | Ian D. McHugh^{18,20}  | Belinda E. Medlyn¹²  | Wayne S. Meyer²²  | Alexander J. Norton²⁵  | Jyoteshna Owens²⁶ | Andy Pitman^{9,10} | Elise Pendall¹²  | Suzanne M. Prober²⁴  | Ram L. Ray²⁷  | Natalia Restrepo-Coupe²⁸  | Sami W. Rifal^{9,10}  | David Rowlings²⁹  | Louis Schipper⁶  | Richard P. Silberstein^{1,30}  | Lina Teckentrup^{9,10} | Sally E. Thompson^{31,32}  | Anna M. Ukkola^{9,10}  | Aaron Wall⁶  | Ying-Ping Wang³³  | Tim J. Wardlaw³⁴  | William Woodgate^{35,36} 

¹School of Agriculture and Environment, University of Western Australia, Crawley, Western Australia, Australia

²Institute for Sustainability, Energy and Environment, University of Illinois Urbana-Champaign, Urbana, Illinois, USA

³Terrestrial Ecosystem Research Network, College of Science and Engineering, James Cook University, Cairns, Queensland, Australia

⁴College of Science and Engineering, James Cook University, Cairns, Queensland, Australia

⁵Faculty of Science, University of Technology Sydney, Ultimo, New South Wales, Australia

⁶Te Aka Mātuatua – School of Science, The University of Waikato, Hamilton, New Zealand

⁷CSIRO Oceans and Atmosphere, Canberra, Australian Capital Territory, Australia

⁸School of Biological Sciences, University of Bristol, Bristol, UK

⁹ARC Centre of Excellence for Climate Extremes, University of New South Wales, Sydney, New South Wales, Australia

¹⁰Climate Change Research Centre, University of New South Wales, Sydney, New South Wales, Australia

¹¹Manaaki Whenua – Landcare Research, Palmerston North, New Zealand

¹²Hawkesbury Institute for the Environment, Western Sydney University, Penrith, New South Wales, Australia

¹³Applied Chemistry and Environmental Science, RMIT University, Melbourne, Vic., Australia

¹⁴Faculty of Science, University of Technology Sydney, Ultimo, New South Wales, Australia

¹⁵College of Engineering, IT & Environment, Charles Darwin University, Darwin, New Territory, Australia

¹⁶Manaaki Whenua – Landcare Research, Lincoln, New Zealand

¹⁷CSIRO Land and Water, Floreat, Western Australia, Australia

¹⁸School of Ecosystem and Forest Sciences, University of Melbourne, Richmond, Victoria, Australia

¹⁹Airborne Research Australia, TERN Ecosystem Processes Central Node, Parafield, South Australia, Australia

²⁰Terrestrial Ecosystem Research Network, The University of Queensland, Indooroopilly, Queensland, Australia

This is an open access article under the terms of the [Creative Commons Attribution](https://creativecommons.org/licenses/by/4.0/) License, which permits use, distribution and reproduction in any medium, provided the original work is properly cited.

© 2022 The Authors. *Global Change Biology* published by John Wiley & Sons Ltd.

- ²¹School of Ecosystem and Forest Sciences, University of Melbourne, Creswick, Victoria, Australia
- ²²Faculty of Sciences, University of Adelaide, Adelaide, South Australia, Australia
- ²³College of Earth and Environmental Sciences, Lanzhou University, Lanzhou, China
- ²⁴CSIRO Land and Water, Wembley, Western Australia, Australia
- ²⁵Jet Propulsion Laboratory, California Institute of Technology, Pasadena, California, USA
- ²⁶Centre for Applied Climate Sciences, University of Southern Queensland, Toowoomba, Queensland, Australia
- ²⁷College of Agriculture and Human Sciences, Prairie View A&M University, Prairie View, Texas, USA
- ²⁸Department of Ecology and Evolutionary Biology, University of Arizona, Tucson, Arizona, USA
- ²⁹Queensland University of Technology, Brisbane, Queensland, Australia
- ³⁰School of Science, Edith Cowan University, Joondalup, Western Australia, Australia
- ³¹Department of Civil, Environmental and Mining Engineering, University of Western Australia, Crawley, Western Australia, Australia
- ³²Department of Civil and Environmental Engineering, University of California, Berkeley, California, USA
- ³³CSIRO Oceans and Atmosphere, Aspendale, Victoria, Australia
- ³⁴ARC Centre for Forest Values, University of Tasmania, Hobart, Tasmania, Australia
- ³⁵School of Earth and Environmental Sciences, The University of Queensland, Brisbane, Queensland, Australia
- ³⁶CSIRO Space and Astronomy, Kensington, Western Australia, Australia

Correspondence

Jason Beringer and Caitlin Moore,
School of Agriculture and Environment,
University of Western Australia, Crawley,
6009 WA, Australia.
Email: jason.beringer@uwa.edu.au; caitlin.moore@uwa.edu.au

Funding information

Australian Research Council, Grant/Award
Number: CE170100023, DE190101182,
DE200100086, DE210101654,
DP190101823 and FL190100003

Abstract

In 2020, the Australian and New Zealand flux research and monitoring network, OzFlux, celebrated its 20th anniversary by reflecting on the lessons learned through two decades of ecosystem studies on global change biology. OzFlux is a network not only for ecosystem researchers, but also for those 'next users' of the knowledge, information and data that such networks provide. Here, we focus on eight lessons across topics of climate change and variability, disturbance and resilience, drought and heat stress and synergies with remote sensing and modelling. In distilling the key lessons learned, we also identify where further research is needed to fill knowledge gaps and improve the utility and relevance of the outputs from OzFlux. Extreme climate variability across Australia and New Zealand (droughts and flooding rains) provides a natural laboratory for a global understanding of ecosystems in this time of accelerating climate change. As evidence of worsening global fire risk emerges, the natural ability of these ecosystems to recover from disturbances, such as fire and cyclones, provides lessons on adaptation and resilience to disturbance. Drought and heatwaves are common occurrences across large parts of the region and can tip an ecosystem's carbon budget from a net CO₂ sink to a net CO₂ source. Despite such responses to stress, ecosystems at OzFlux sites show their resilience to climate variability by rapidly pivoting back to a strong carbon sink upon the return of favourable conditions. Located in under-represented areas, OzFlux data have the potential for reducing uncertainties in global remote sensing products, and these data provide several opportunities to develop new theories and improve our ecosystem models. The accumulated impacts of these lessons over the last 20 years highlights the value of long-term flux observations for natural and managed systems. A future vision for OzFlux includes ongoing and newly developed synergies with ecophysiologicals, ecologists, geologists, remote sensors and modellers.

KEYWORDS

agroecosystem, disturbance, eddy covariance, flux network, global change, modelling, remote sensing, stress, TERN

TABLE 1 A comparison of selected vegetation traits across Australian, North American and European plant species, and a combined data set (Global)

Trait	Australia	North America	Europe	Global	Trans
Wood density (g cm^{-3})	0.69 ± 0.0069 (890) a	0.63 ± 0.011 (317) b	0.55 ± 0.019 (46) c	0.67 ± 0.0054 (1253)	In
Sapwood specific hydraulic conductivity ($\text{kg s}^{-1} \text{m}^{-1} \text{MPa}^{-1}$)	0.54 ± 0.11 (90) a	0.45 ± 0.11 (65) a	-0.53 ± 0.21 (23) b	0.37 ± 0.077 (178)	In
Specific leaf area ($\text{m}^2 \text{kg}^{-1}$)	1.61 ± 0.033 (386) a	2.68 ± 0.034 (407) b	2.75 ± 0.027 (394) b	2.36 ± 0.024 (1187)	In
Foliar N (mg g DW^{-1})	12.40 ± 0.38 (330) a	21.39 ± 0.51 (330) b	21.54 ± 0.57 (253) b	18.18 ± 0.31 (913)	In
V_{cmax} mass basis ($\text{nmol CO}_2 \text{g}^{-1} \text{s}^{-1}$)	-1.10 ± 0.039 (165) a	-0.49 ± 0.068 (55) b	-0.75 ± 0.13 (24) b	-0.93 ± 0.037 (244)	In
Stomatal conductance ($\text{mmol m}^{-2} \text{s}^{-1}$)	4.98 ± 0.053 (192) a	5.49 ± 0.057 (173) b	5.41 ± 0.19 (21) b	5.23 ± 0.040 (386)	In
A_{max} Maximum assimilation rate (mass basis) ($\text{nmol CO}_2 \text{g}^{-1} \text{s}^{-1}$)	4.16 ± 0.042 (192) a	4.75 ± 0.045 (176) b	5.16 ± 0.13 (40) c	4.51 ± 0.035 (408)	In
A_{sat}/N (=photosynthetic nitrogen use efficiency; PNU/E)	5.21 ± 0.17 (192) a	6.41 ± 0.20 (170) b	8.15 ± 0.60 (40) c	6.01 ± 0.14 (402)	In
Foliar ^{13}C discrimination	22.00 ± 0.27 (63) a	20.30 ± 0.17 (141) b	20.15 ± 0.21 (33) b	20.70 ± 0.13 (237)	In

Data retrieved from multiple publicly available data sets, but especially the TRY plant trait data set (Max Planck Institute for Biogeochemistry) and GLOPNET (Macquarie University) and the Diefendorf et al., global carbon discrimination data base. Means followed by a different letter within a row are significantly different from each other. Numbers of replicates shown in parentheses. Data which have been transformed are noted in the 'Trans' column. Unpublished analyses of data by D. Eamus and B. Murray.

1 | INTRODUCTION

Ecosystem flux networks are demonstrating their increased relevance to society's most significant sustainability challenges, particularly those linked to global change (Baldocchi, 2019; Long, 2020). The need for better information and knowledge about energy, water and carbon budgets in natural and managed ecosystems, and the underlying processes that govern these budgets, is growing as the world looks to land-based carbon sequestration to help achieve net zero greenhouse gas emissions. Quality data and expert knowledge will be critical to building confidence in these options for managing net emissions in a changing climate.

OzFlux, the regional flux monitoring network covering Australia and New Zealand, began in the late 1990s in anticipation of these global challenges, especially climate change (see next section for more detail). Two decades on from its establishment in 2001, OzFlux has matured into a network that supports research about Australia's and New Zealand's unique ecosystems, provides key data for Southern Hemisphere terrestrial systems, and observations for some ecosystems subject to an extreme and highly variable climate. The OzFlux community has created an observing network and platform to enable scientific discoveries by generations of researchers and to deliver relevant and robust data and information for researchers, resource managers and policymakers, now and into the future. Through OzFlux, this research community has also transformed its approach to data sharing, acknowledging the challenges this can involve and developing solutions to address these, alongside demonstrating the significant benefits that flow from ensuring that data complies with FAIR (Findable Accessible Interoperable Reusable) principles (Wilkinson et al., 2016). OzFlux provides an example to other flux networks and research communities of the importance of data sharing.

The combined research infrastructure of OzFlux and similar regional networks around the world (Mizoguchi et al., 2009; Novick et al., 2018; Park et al., 2018; Rebmann et al., 2018) contribute to the globally coordinated FLUXNET network (Baldocchi et al., 2001). Like OzFlux, this global network of micrometeorological 'flux towers' that use the eddy covariance method, provide observations to advance the understanding and simulation of processes across the past, present and future for a wide array of the world's ecosystems. These continuous, long-term and standardised measurements are critical for detecting ecosystem stress, recovery from disturbance, and resilience to climate change, as well as exploring the causes and effects of longer-term climate trends and interannual variability—a goal unattainable with short-term records (Baldocchi et al., 2018). In-situ flux tower and remote sensing observations are being combined to upscale from site to regional and global scales (e.g. Cleugh et al., 2007; Jung et al., 2020; Schimel & Schneider, 2019), contributing valuable data-driven diagnoses of how climate change affects terrestrial carbon and water cycles (e.g. Piao et al., 2020). Similarly, combining in situ flux tower measurements, manipulation experiments and satellite remote sensing are advancing knowledge of how climate extremes affect the carbon cycle (Sippel et al., 2018). See

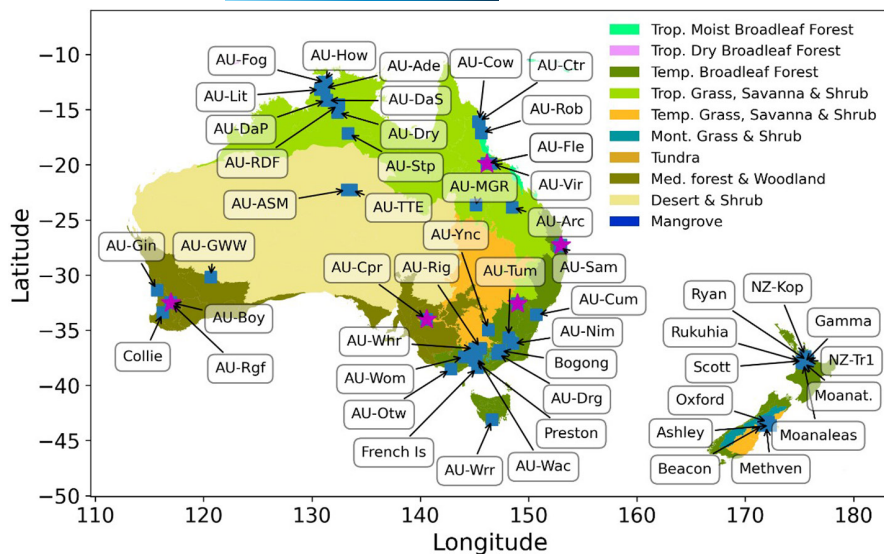


FIGURE 1 OzFlux tower sites labelled with Fluxnet ID where available (blue square) and critical zone observatories (purple star) across Australia and New Zealand, including major biome types defined using the 'Ecoregions2017' data set from Dinerstein et al. (2017) licensed under CC-BY 4.0. For a current list of active sites and their specifications visit www.ozflux.org

Chapin et al. (2006) for definitions of carbon cycle terms used in this paper. FLUXNET's global database of ecosystem-scale observations are being used to evaluate and improve the processes represented in many ecophysiological, hydrological and land surface models (LSMs), improving the regional and global Earth System models used around the world (e.g. Ziehn et al., 2020).

Vegetation of Australian and New Zealand ecosystems have evolved in geographic isolation, geological stability, long-term aridity and fire-prone environments. In Australia, these conditions have resulted in a unique flora with scleromorphic properties enabling existence in arid climates on old, highly weathered, low-nutrient soils and frequent fire (Fox, 1999). As a result, endemism in Australian flowering plants and gymnosperms is extremely high at 93% and 96% relative to global floras (Chapman, 2009). The Australian climate envelope differs from that of Europe, most of North America, Asia and South America, being, on average, warmer and drier (both in terms of rainfall and vapour pressure deficit; VPD) but also subject to larger interannual variations in rainfall and VPD than experienced across much of the globe. While much of Australia is arid or semi-arid, there are also regions that experience extremely large annual rainfall totals. The associated rainforests are also extensive in the tropical north-east. Unlike other continents, Australian vegetation is dominated by sclerophyllous, evergreen, woody species—species that are poorly represented in classifications of global plant functional types. Multiple interactions between these factors of low soil nutrient content, extreme interannual variability in rainfall, temperature and VPD across most of Australia, and systemic differences in vegetation attributes (for example, wood density, SLA, photosynthetic nitrogen-use efficiency—see Table 1) result in divergences of relationships among climate variables, carbon and water fluxes, resource-use efficiencies (for example Radiation Use Efficiency; Ponce-Campos et al., 2013) and vegetation attributes across the continents. Of the nine key ecophysiological attributes listed in Table 1, eight are statistically different from typical values of European, North American and global vegetation. Such reasoning underpins the rationale for, and importance of, the OzFlux network.

The aim of this paper is to describe the unique and most important insights, and new knowledge contributed by the OzFlux network over its 20-years of operation. Through a series of short 'lessons', we show how Australian and New Zealand ecosystems and landscapes interact with land management practices, climate variability and climate change, with a focus on the following: (1) ecosystem response, resistance and resilience to disturbance and stress; (2) ecosystem processes that modulate water availability, runoff and productivity and (3) net greenhouse gas emissions and the potential for these ecosystems to mitigate climate change and support ecosystem services and food production in the future. This aim reflects that our primary audience for these lessons is the ecosystem research community, however we anticipate that those 'next users' of the knowledge, information and data that networks such as OzFlux support may also find benefit from these insights. In distilling the key lessons learned, we also identify where further research is needed to fill knowledge gaps and improve the utility and relevance of the outputs from OzFlux.

2 | THE GENESIS OF OzFlux

The OzFlux journey began in the early 1990s when Australian and New Zealand researchers embarked on longer-term micrometeorological field campaigns and studies in agricultural, natural and modified forest, native grassland and wetland ecosystems. This research revealed gaps in our knowledge of ecosystem dynamics and feedbacks with climate and hydrology at multiple timescales, across the diverse landscapes of New Zealand and Australia (Campbell & Williamson, 1997; Cleugh et al., 2007; Hollinger et al., 1994; Leuning et al., 2004). Through long-term international collaborations, Australian and New Zealand researchers learned from the scientific advances of similar research programs developing overseas, which themselves benefitted from the history of pioneering micrometeorological research in Australia and New Zealand. This included major contributions to the theory and methods for making

eddy covariance (i.e. flux) measurements, data processing and analysis, all of which were necessary for enabling long-term, autonomous flux monitoring (Finnigan et al., 2003; Leuning et al., 1982; Webb et al., 1980). High quality, in situ measurements of ecosystem fluxes and stores of water, carbon and nutrients were also being sought to calibrate and validate remotely sensed observations in these unique landscapes and ecosystems. Flux data were also being incorporated into biophysically realistic LSMs, such as the CABLE LSM within Australia's global climate and Earth system model (Australian Community Climate and Earth System Simulator, Ziehn et al., 2020).

The need for continuous ecosystem data led to the first establishment of flux towers in several ecosystems around Australia (Figure 1): (1) a managed wet temperate forest in south-eastern Australia (Tumbarumba, Bago State Forest, New South Wales); (2) a semi-arid subtropical savanna site in western Queensland (Virginia Park, Leuning et al., 2005); (3) a wet temperate forest in southeast Australia (Wallaby Creek in Victoria, Kilinc et al., 2012); (4) a tropical savanna woodland of the Northern Territory (Howard Springs, Eamus et al., 2001) and (5) a high-rainfall, tropical rainforest in Far North Queensland (Cape Tribulation). In New Zealand, the focus was on understanding the impacts of land management and hydroclimatic factors on ecosystem (especially soil) carbon stock changes (Hunt et al., 2004; Mudge et al., 2011; Nieveen et al., 2005), with longer-term tower sites established at both agricultural (Hunt et al., 2016; Rutledge et al., 2017) and wetland (Goodrich et al., 2017) sites (Mudge et al., 2011; Nieveen et al., 2005; Owen et al., 2007).

These foundational flux tower sites sowed the seeds of OzFlux, which expanded to a continental network when TERN (Terrestrial Ecosystem Research Network) was funded in 2009. This funding provided the capital and institutional investment needed to support the 'hard' infrastructure of around a dozen flux towers and supersites across Australia (Beringer et al., 2016; Karan et al., 2016). Equally important, it provided the dedicated and sustained support for 'soft' infrastructure needs such as training for early career researchers; the data management infrastructure to comply with FAIR data principles (Wilkinson et al., 2016); data curation and data processing to ensure consistency across the network; data quality control and assurance; and data discoverability and data access (Beringer et al., 2017; Isaac et al., 2017).

With the addition of new flux towers in ca. 2010 and the development of integrated data processing systems (Isaac et al., 2017), OzFlux has run as a truly regional network since 2010. Historically, Australian OzFlux researchers have largely focussed on natural and forested ecosystems, whereas New Zealand OzFlux research has concentrated on greenhouse gas budgets and emissions from agricultural systems, including drained peatlands. The long-term investment in OzFlux has led to significant and diverse research outcomes and impacts as summarised in Figure 2. The following sections explore some of the key lessons and outcomes from OzFlux in more detail, and how they have contributed to global understanding in their respective scientific space.

FIGURE 2 Summary of the significant scientific and technical outcomes from the OzFlux network after two decades: Blue relates to discovery, information and knowledge outcomes; grey outcomes relate to assessments across site, regional and global scales; yellow refers to the capacity building outcomes for researchers and green indicates technical outcomes for observations and modelling



3 | LESSON 1—OzFlux ECOSYSTEMS EXTEND OUR UNDERSTANDING OF THE CLIMATE SPACE

Terrestrial ecosystems measured in OzFlux span a vast bioclimatic space from alpine to tropical, coastal to central desert. OzFlux sites include some of the hottest sites within FLUXNET, while also covering a rainfall range from 260 to 3930 mm yr⁻¹ on average (Beringer et al., 2016), ranging from water- to energy-limited sites (De Kauwe et al., 2019; van der Horst et al., 2019). Many sites are subject to high temperatures, including frequent heatwaves, and high interannual variability in rainfall. In fact, both the Northern and Southern Australian regions have distributions of mean annual precipitation (MAP) variability that are much higher than the rest of the world (Figure 3), and OzFlux sites measure across a very large range of MAP and in areas with higher MAP co-efficient of variation not captured by FLUXNET sites (Figure 3). Moreover, OzFlux includes sites with a very large spatial range in VPD, greater than 6 kPa (Renchon et al., 2018), allowing exploration of vegetation responses to high VPD that goes well beyond the conditions currently experienced by most ecosystems in the Northern Hemisphere (Grossiord et al., 2020). It is sometimes argued that Australian and New Zealand vegetation and its management is unique, with the implication that it is difficult to use data from these ecosystems to inform our understanding of vegetation function on other continents (see also Table 1). However, in this time of accelerating climate change, the network becomes a natural laboratory to develop inform a global understanding of vegetation responses to increasingly extreme climate conditions, including to high temperatures not yet experienced in most parts of the world (Hutley et al., 2011; van der Horst et al., 2019).

Australia's and New Zealand's climate can vary greatly from one year to the next due to hemispheric-scale modes of variability (e.g. El Niño Southern Oscillation, Southern Annular Mode, Indian Ocean Dipole; Rogers & Beringer, 2017) and the influence of regional weather phenomena (e.g. Tropical Cyclones, East Coast Lows or West Coast Troughs; Beringer & Tapper, 2000) with important impacts on the continent's terrestrial carbon balance (Teckentrup et al., 2021)—as illustrated for precipitation in Figure 3. Regional and continental weather events can trigger pronounced variations in rainfall distribution that result in large seasonal and interannual variations of leaf area index (LAI), gross primary productivity (GPP) and ecosystem respiration (ER) (Cleverly, Eamus, Luo, et al., 2016; Cleverly et al., 2019; Griebel et al., 2017; Haverd, Ahlström, et al., 2016; Haverd, Smith, Trudinger, et al., 2016; Hinko-Najera et al., 2017; Li et al., 2017; Renchon et al., 2018; Xie et al., 2019). They also result in seasonal fluctuations between mild and wet maritime winds and hot and dry continental winds from the Australian mainland. These shifts not only affect plant productivity, but also provide methodological challenges for comparing annual budgets that have been constructed from flux tower observations (Griebel et al., 2016; Griebel, Metzen, Pendall, et al., 2020).

Recent heatwaves during a prolonged drought across southern Australia have proven valuable to examine the individual and

compounded effects of extreme temperature and water stress on the hourly and daily exchange of CO₂ and H₂O in temperate forests and woodlands. A synthesis across seven OzFlux sites during the record-breaking heatwave in the 'Angry Summer' of 2012/2013 demonstrated that temperate woodlands became net sources of CO₂ on a daily average during the most intense part of the heatwave. This response was attributed to increased ER during hotter days and nights and to a reduction in the magnitude and number of hours of carbon uptake (van Gorsel et al., 2016). However, large reductions (up to 60%) in GPP were only observed in water-limited woodlands, while forests with access to deep soil water were able to sustain photosynthesis near to or beyond baseline levels at the cost of increased water loss through evapotranspiration (Griebel, Bennett, et al., 2020; van Gorsel et al., 2016). These results highlight that the potential for temperate forests and woodlands to remain net carbon sinks will not only depend on the responses of photosynthesis to warmer temperatures, but also on soil water availability and on the concomitant responses of ER.

High temperatures and associated deficits in atmospheric vapour pressure provide challenges for the ability of plants to regulate water loss and to maintain photosynthesis. A synthesis across 17 OzFlux wooded ecosystems demonstrates strong alignment between the thermal optima of GPP and mean daytime air temperatures, indicating ecosystem scale photosynthesis has adjusted to past thermal regimes (Bennett et al., 2021). Although it currently seems that GPP in Australian broadleaf evergreen forests is buffered against small increases in air temperature, the shape of this relationship and the response of ER to rising temperatures will determine the sustainability of Australian carbon sinks into the future (Bennett et al., 2021; Duffy et al., 2021; Griebel, Bennett, et al., 2020; van Gorsel et al., 2016).

The cooling effect of transpiration protects leaves from heat damage during extreme temperatures, and decoupling of photosynthesis from transpiration has been demonstrated in experimental manipulations of young eucalypt trees (Drake et al., 2018). However, a meta-analysis across OzFlux sites highlighted that the confounding role of increasing VPD on transpiration had blurred any conclusive evidence of decoupling between photosynthesis and transpiration at the ecosystem scale (De Kauwe et al., 2019).

Whether transpiration continues or is suppressed during heatwaves is crucial for coupled land-atmosphere processes and impacts on regional climate. If vegetation can sustain transpiration during heatwaves, a negative feedback results in a cooling and moistening of the atmospheric boundary layer. Conversely if transpiration ceases, the resulting positive feedback leads to heating and drying of the boundary later and amplifies the heatwave regionally. Understanding these mechanisms is therefore critical in understanding how climate change will be expressed as heatwaves over vegetated surfaces. It also means that models representing the impact of global climate change regionally, and on terrestrial ecosystems, must represent these processes and mechanisms.

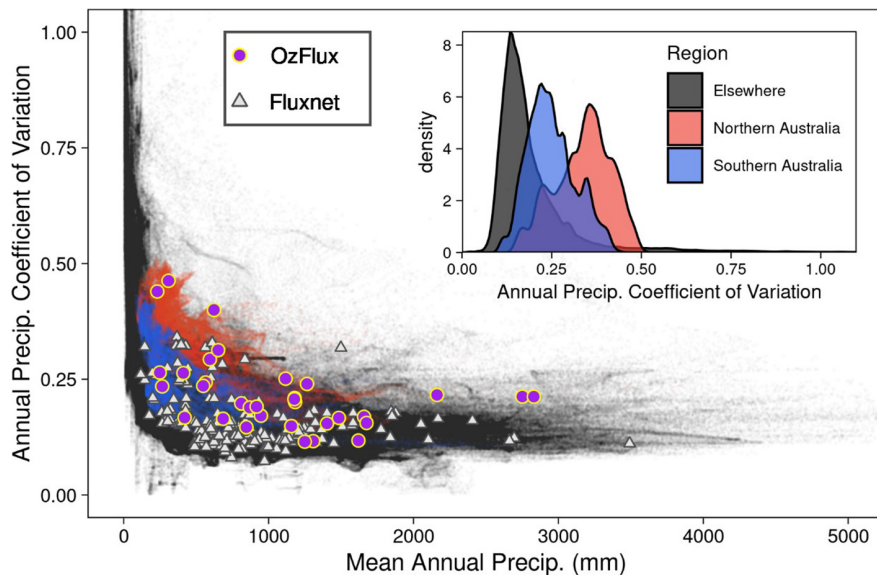


FIGURE 3 The coefficient of variation of annual precipitation plotted against mean annual precipitation (global gridded data) for the period 1981–2010 with probability distributions showing Northern Australia, Southern Australia, rest of the world (inset). Precipitation data were extracted from the TerraClimate dataset (Abatzoglou et al., 2018) at 0.09° resolution for regions between 60°S and 80°N. For visualisation regions where mean annual precipitation was less than 5 mm yr⁻¹ are removed. Northern (red) and Southern Australia (blue) are differentiated by the 28°S Latitude parallel. The corresponding climates of FluxNet (grey triangle) and OzFlux sites (purple circles) are shown

4 | LESSON 2 – ECOSYSTEM RECOVERY FROM DISTURBANCE

Disturbances in Australia and New Zealand can include fire, cyclones and severe storms, pests, disease, agricultural management and land-use change, all of which have varying levels of impact on ecosystem carbon cycling. Baldocchi (2008) discussed how the ratio of GPP to ER (i.e. GPP/ER) of disturbed sites is lower than that of undisturbed sites. When plotting GPP and ER from OzFlux sites, Beringer et al. (2016) showed that only a few had a low GPP/ER ratio, despite several sites in the network with a history of disturbance. While much of the network was established in undisturbed sites, many have been subject to natural or managed disturbance over the past 20 years. The apparent resilience of these ecosystems to disturbance is an important aspect of their longer-term carbon balance in response to global change, which is discussed further in lesson 4.

Bushfire is one of the most widespread causes of ecosystem disturbance across Australia, having shaped adaptations in vegetation across the continent for over 80 million years, similar to southern Africa and in contrast to the more recent development of fire in the Mediterranean region and the Americas (Carpenter et al., 2015; Cleverly et al., 2019). In tropical Northern Australian mesic savannas, bushfires are frequent, with 30% of the total savanna land area burned annually (Beringer et al., 2011, 2015). This fire regime directly affects carbon emissions and productivity due to canopy loss (Beringer et al., 2007). Global climate change is expected to further increase extreme fire weather, and thus greenhouse gas emissions, which will further reduce the savanna carbon sink (Beringer et al., 2003; Duvert et al., 2020). By contrast, land management, which reduces fire frequency and intensity (e.g. by shifting fires from the

late to the early dry season) is reducing greenhouse gas emissions at landscape scales in the tropical savanna (Edwards et al., 2021). Fire in Australia's tropical savannas has been shown to reduce the strength of the monsoon, and hence affect regional climate, by modifying the dynamics of the atmospheric boundary layer via changes in the partitioning of the surface energy budget (Beringer et al., 2003, 2015; Gorgen et al., 2006; Lynch et al., 2007; Richards et al., 2011; Wendt et al., 2007). Clearly, lessons learned about vegetation-climate-fire relations in the Australian tropical savanna are highly relevant for understanding global change (Lehmann et al., 2014) and are applicable to fire-prone ecosystems in the United States, southern Europe and Africa.

Where fires in northern Australia are frequent and of low intensity, fire in southern Australia tends to be infrequent and very destructive (Cleverly et al., 2019). Fire in temperate and Mediterranean-type ecosystems of southern Australia turns them initially into a CO₂ source, with source strength depending on vegetation and climate (Sun et al., 2017; Wardlaw, 2021). This was illustrated by recent estimates that the bushfires burning in Australia between November 2019 and January 2020 emitted 715 million tonnes (range 517–867) of CO₂ into the atmosphere (about twice Australia's annual net anthropogenic CO₂ emissions; van der Velde et al., 2021). Fire in a tall eucalypt forest in southwest Tasmania switched the ecosystem to a net CO₂ source for the first year post-fire, despite the survival of canopy trees and prolific seedling regeneration (Wardlaw, 2021). In mallee ecosystems of South Australia, which consist of several species of multi-stemmed *Eucalyptus*, it can take over 3 years post-fire before net ecosystem productivity (NEP = GPP-ER) recovers to pre-fire levels, despite fires having little effect on respiration or nutrient cycling (Sun et al., 2015,

2020). By contrast, NEP in mesic tropical savanna ecosystems of northern Australia returns to pre-fire status in 3–4 months post-fire (Beringer et al., 2007). The knowledge provided from this research into bushfires in Australia, including regional differences between the northern and southern parts of the continent, is important for understanding how these ecosystems adapt to changing climates. It is particularly useful for determining whether they remain carbon sinks in the long-term as fire frequency and intensity changes, and for informing and improving Earth system models, many of which are poor at simulating fire.

Tropical cyclones largely affect OzFlux sites in northern Australia and occur infrequently, but when they do, they often cause great destruction. For example, Cyclone Monica in April 2006 affected 10,400 km² of savanna across northern Australia, resulting in mortality and severe structural damage to 140 million trees (Cook & Nicholls, 2009; Hutley et al., 2013). The current tree-stand structure at the long-term savanna flux site at Howard Springs is likely to have been affected by previous cyclones as shown by the age distribution of tree diameter (Figure 4) (Hutley & Beringer, 2011; O'Grady et al., 2000). Recruitment and stand regrowth post-1974 are likely to explain the high NEP typically measured at the site (2–4 Mg C ha⁻¹ y⁻¹) (Beringer et al., 2016; Duvert et al., 2020; Eamus et al., 2001), which is indicative of this site's continued state of disequilibrium and underscores the importance of understanding site history for interpreting NEP. The likely impacts of increased storm intensity include larger recruitment pulses, thus larger episodic CO₂ emissions, potentially with a smaller sequestration potential of these ecosystems.

Whereas the effects of fire and cyclones have been well characterised in some sites across the OzFlux network, gaps remain in our knowledge about the consequences of changing fire intensity and regimes on ecosystem carbon and water budgets more broadly across New Zealand and Australia. There is the added challenge that some very intense fires can destroy the very infrastructure that measures the effects of fire on these fluxes, further limiting our understanding. Gaps also exist in our understanding of the impacts on

ecosystems of very infrequent cyclones, particularly in the tropical rainforests of Far North Queensland. Additionally, few or no OzFlux measurements have provided a detailed carbon budget for disturbance by pests, disease, or land-use change. These knowledge gaps can be difficult to fill because many but not all disturbances require the serendipity of being in the right place at the right time. This reinforces the need for continuous measurements over many decades, to increase the chances of being in the right place at the right time.

5 | LESSON 3—THE EFFECT OF DROUGHT AND HEAT STRESS ON ECOSYSTEM CARBON AND WATER BALANCES

The primary stress events in natural and managed ecosystems across Australia and New Zealand are related to water availability, usually in the form of short- or long-term meteorological drought, and many ecosystems have adapted to withstand prolonged episodes of water limitation. The last 20 years has seen significant increases in temperature (the Australian continent has warmed by $1.44 \pm 0.24^\circ\text{C}$ since 1910) and a resultant increase in more frequent and intense heatwaves (Australian Bureau of Meteorology & CSIRO, 2020). A shift towards drier conditions across Australia's southern regions, especially in the April to October 'cool season', has been shown to be the most sustained large-scale change since the late 19th century and are linked to the effects of anthropogenic climate change on the circulation systems that affect Australia's seasonal weather patterns. Lower rainfall, combined with warming and increased evaporative demand are exacerbating the reductions in water availability in rivers and in the soil (Australian Bureau of Meteorology & CSIRO, 2020). The drier conditions observed in southeast and southwest Australia over the last two decades have contributed to regional patterns of warming with a positive feedback effect on increased evaporative demand. Therefore, flux monitoring in Australia and New Zealand has been critically placed

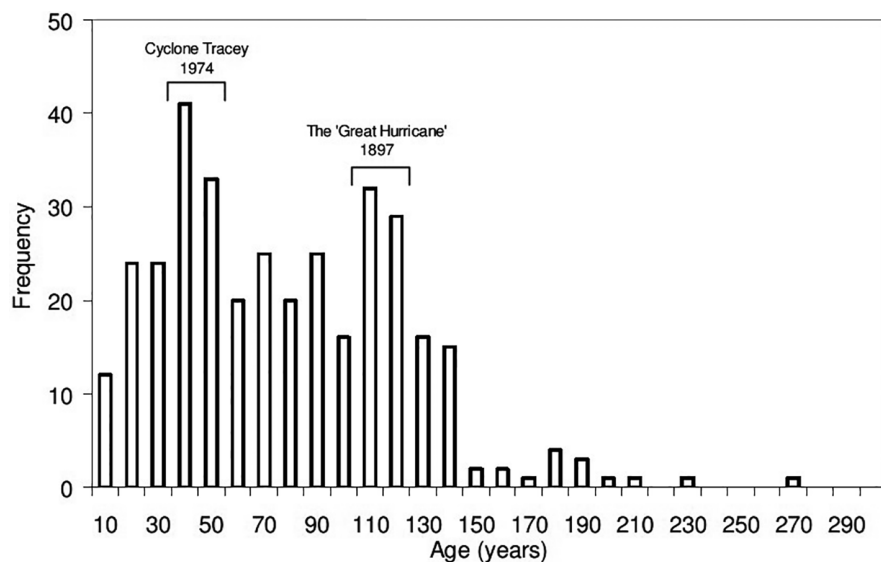


FIGURE 4 Frequency distribution of the age of Eucalyptus and Corymbia trees at the Howard Springs flux site (number of trees) for trees >2 cm DBH (diameter at breast height) showing history of disturbance at the site. A relationship between age and tree size has been established for these ecosystems (Prior et al., 2004) and was used to convert DBH to age. Figure reproduced with permission from Hutley and Beringer (2011)

to capture the response of native and managed ecosystems to the occurrence of these emerging trends in interannual and more frequent stress events (Cleverly, Eamus, Luo, et al., 2016; Moore et al., 2018) (see lessons 1, 4 and 8).

The impact of drought has been particularly evident in semi-arid Australia, where ecosystems have shifted from weak CO₂ sinks into CO₂ sources (Ma et al., 2016; Qiu et al., 2020). The pivot point at which an ecosystem switches from a CO₂ sink to a CO₂ source can depend on the vegetation properties; for example, the *Acacia* spp. dominated woodland near Alice Springs, in the arid centre of Australia, remain a net CO₂ sink as long as the annual rainfall exceeds 260 mm (site average is 300 mm yr⁻¹), whereas the nearby hummock grasslands become a CO₂ source if the annual rainfall falls below the pivot point of 506 mm yr⁻¹ (Tarin, Nolan, Eamus, et al., 2020).

Ecosystems can also respond to drought stress by regulating their water use via phenotypic plasticity as observed in *Eucalyptus obliqua* at the Wombat State Forest in south-eastern Australia, where leaf water potential at the turgor loss point was lowered through osmotic adjustment during a short-term summer drought (Pritzkow et al., 2020). Other drought response mechanisms include partial drought deciduousness, where LAI is reduced to minimise the surface area for water loss, which also increases the Huber value (ratio of sapwood area to leaf area) during extended drought (Meyer et al., 2015; Pritzkow et al., 2020). Individual species may also behave differently when subject to similar stresses, as shown at Cumberland Plain, where the melaleuca stand maintained higher canopy conductance and transpiration under VPD and moisture stress than the neighbouring eucalypt stand (Griebel, Metzen, Boer, et al., 2020).

Drought events in New Zealand, although less intense than those typically experienced in Australia, can still reduce ecosystem carbon uptake. For example, a short-term meteorological drought turned an intensively grazed dairy pasture into a net CO₂ source (Kim & Kirschbaum, 2015; Kirschbaum et al., 2015; Rutledge et al., 2015). The intensive grazing that characterises these systems regularly removes pasture dry matter. Pasture regrowth and carbon uptake via photosynthesis following grazing is limited during drought conditions, leading to net carbon loss (Kirschbaum et al., 2017; Wall et al., 2019). In contrast to highly managed agroecosystems, native peatland bogs in New Zealand's Waikato region are able to maintain a strong carbon sink even during drought (Goodrich et al., 2017) likely due to ample soil moisture stores.

Temperate and semi-arid ecosystems in Australia display different mechanisms to tolerate prolonged water stress. For Mulga dominated semi-arid ecosystems, extensive expression of ecophysiological adaptations allows survival through decadal scale droughts (Cleverly, Eamus, van Gorsel, et al., 2016; Eamus et al., 2013; Tarin et al., 2020b) and are usually reliant on single rainfall events to boost their CO₂ uptake (Cleverly, Eamus, Restrepo Coupe, et al., 2016). Temperate ecosystems in non-water limited regions of Australia are able to tolerate several years of below average rainfall through access to greater soil moisture reserves (Griebel, Bennett, et al., 2020; Keith et al., 2012; Kirschbaum et al., 2007). Access to soil moisture reserves helps buffer wet sclerophyll ecosystems against

heatwaves, as illustrated by the combined drought and heatwave event in 2012/2013 that led to water-limited woodland ecosystems becoming CO₂ sources due to a reduction in photosynthesis caused by elevated water stress (Cleverly, Eamus, van Gorsel, et al., 2016; van Gorsel et al., 2016), while wetter forest systems were much less affected (van Gorsel et al., 2016). Model analysis of the more recent 2018/2019 heatwave showed reduced productivity for most ecosystems across continental Australia (Qiu et al., 2020). Four sites in southeast Australia also show reduced CO₂ sink strength during this period (Figure 5). Some of these OzFlux observations are leading to much-needed and rapid improvements in the CABLE LSM to better incorporate groundwater-vegetation interactions (Mu et al., 2021; Mu et al., 2021).

Drought can interact with disturbance (lesson 2) or other stress as was demonstrated at the temperate, wet sclerophyll, managed forest at Tumberumba, where long-term drought coincided with an insect attack (Kirschbaum et al., 2007). The forest was impacted by this attack, but it became a CO₂ sink again when the insect attack had abated, despite continued and even intensifying drought conditions (van Gorsel et al., 2013). A future that consists of more frequent heatwaves in combination with drought could deplete soil moisture reserves beyond the tipping point for many ecosystems and result in greater ecosystem stress.

6 | LESSON 4—ECOSYSTEM RESILIENCE, ADAPTATION AND VULNERABILITY TO INTERANNUAL CLIMATE VARIABILITY

Ecosystems can be resilient to climate variability by maintaining a stable carbon budget during and shortly following the imposition of stress (Holling, 1973) or through their capacity to rapidly recover to a pre-stress state after the return of favourable environmental conditions (Ponce Campos et al., 2013). Because of Australia and New Zealand's contrasting climate zones and large interannual fluctuations in precipitation (Cleverly, Eamus, Luo, et al., 2016; Cleverly, Eamus, Restrepo Coupe, et al., 2016; Cleverly et al., 2019; Van Etten, 2009), measurements from across the OzFlux network are ideal to analyse and explore the effects of hydroclimatic variation (e.g. wet to dry seasons or years) on ecosystem carbon and water exchange (Karan et al., 2016). For example, while the strong interannual variability in arid and semi-arid Australian ecosystems reduces productivity, its recovery does not appear to be limited by previous sequences of drought, swinging rapidly between states of net CO₂ source and sink, sometimes from one year to the next (Cleverly, Eamus, Restrepo Coupe, et al., 2016; Cleverly, Eamus, van Gorsel, et al., 2016; Ma et al., 2016; Tarin, Nolan, Medlyn, et al., 2020). Due to the rapid recovery of Australian semi-arid ecosystems following a year of extreme drought in 2009 (Cleverly et al., 2013; Cleverly, Eamus, Restrepo Coupe, et al., 2016; Eamus et al., 2013), these ecosystems contributed most to the observed global land carbon sink anomaly during the 2011 La Niña wet year (Poulter et al., 2014; Raupach et al., 2013).

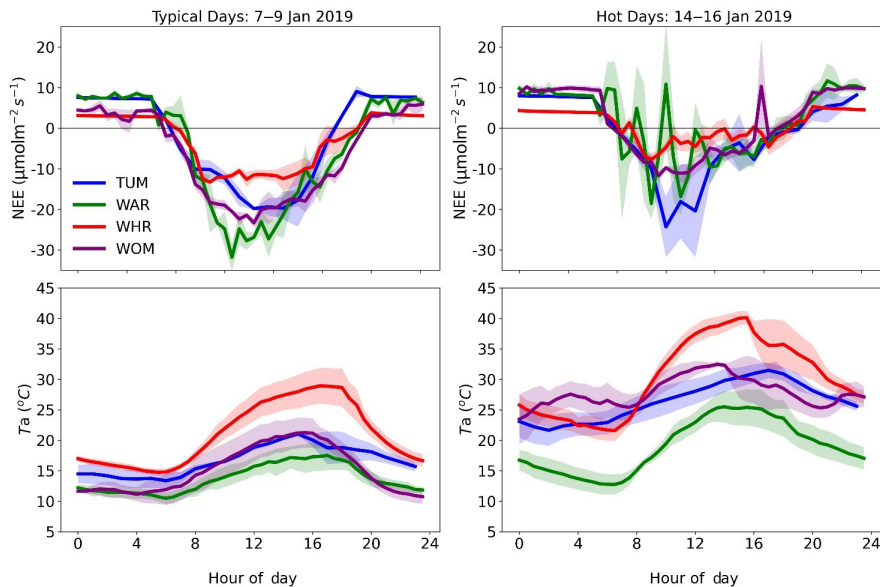


FIGURE 5 Diurnal average (\pm standard error) net ecosystem exchange (NEE) measured at four southeast Australian forest OzFlux sites across three typical summer days (left) and three heatwave summer days (right) in 2019. Typical summer days were determined using historical summer climate data for southeast Australia, and the heatwave days were identified from Qiu et al. (2020). OzFlux sites include Tumberumba (TUM, wet sclerophyll), Warra (WAR, wet sclerophyll), Whroo (WHR, dry sclerophyll) and Wombat State Forest (WOM, dry sclerophyll). Measurements are 30-min ensemble averages from the four flux tower sites

Australian ecosystems also show resilience to drought and fire in their leaf phenology. For example, in Australia's mesic savannas, fire usually only consumes the seasonal grassy understorey, whereas canopy trees mostly remain intact (Lehmann et al., 2014). By contrast, in Australia's tropical drylands, a highly resilient leaf phenology allows strong growth during wet years despite the absence of a growing season in previous dry years (Ma et al., 2013). Similarly, Australian tropical rainforest trees are considered to be somewhat resilient to high-temperature stress and heatwaves due to the very high temperature at which leaf dark respiration reaches a peak (60°C) (Weerasinghe et al., 2014), although they may be instead vulnerable to high VPD stresses (Fu et al., 2018). However, a loss of resilience has been predicted for Australian drylands with the increased occurrence of future woody dieback and megadrought events (Ma et al., 2013), and the continued resilience of many ecosystems in Australia and New Zealand is not assured with global change (van Gorsel et al., 2016).

Other examples of carbon-function resilience to disturbance and drought are evident in managed and natural ecosystems of New Zealand. Here, dairy farm pastures have shown rapid recovery to a net positive carbon balance within one week following intensive grazing events. In these systems, grass is maintained in a continuously juvenile state through repeated grazing and defoliation by cattle (Hunt et al., 2016). In contrast, northern New Zealand's peat-forming wetland ecosystems display resilience through the continuous accumulation of deep peat deposits over millennia, despite existing in a warm maritime climate zone with frequent seasonal water deficits. In the few remaining intact peat wetlands, resilience to drought is a product of the ecosystem's conservative evaporation regime and highly dynamic peat surface level (Campbell & Williamson, 1997; Fritz et al., 2008), both of which contribute to maintaining a stable and shallow water table, limiting respired CO_2 losses (Goodrich et al., 2017; Ratcliffe et al., 2019). However, imposing artificial drainage diminishes their ability to self-regulate, leading to a shift in ecosystem structure and function, resulting in larger component CO_2 fluxes

(Ratcliffe et al., 2019, 2020). Furthermore, resilience is completely lost when drained peatlands are used for dairy grazing, where annual CO_2 losses can be extremely large, particularly during dry conditions (Campbell et al., 2015, 2021).

Despite these insights, there exist substantial gaps in our knowledge of the impacts of hydroclimatic variation on diverse natural and managed ecosystems that might yield clues about their resilience under the stresses imposed by changing climate. Some of these gaps result from the inadequate distribution of flux tower sites; for instance, the OzFlux network does not include sites within the indigenous native forests of New Zealand, and semi-arid ecosystems are under-represented in Australia (Beringer et al., 2016). Whilst research using OzFlux data has demonstrated the resilience of Australasian ecosystems to the large climate variability experienced in the past, much less is understood about their resilience to future global changes, especially larger and more frequent extreme weather events, warmer temperatures and changed rainfall regimes that result from anthropogenic climate change.

7 | LESSON 5—CLIMATE IMPACTS OF AGROECOSYSTEMS

Agriculture in New Zealand differs from many other countries in that since 1987, farmers have not been able to receive any government subsidies for production or environmental services associated with their ownership or stewardship of land. This forced farmers to rapidly become economically efficient and led to the growth of a commercially successful export-oriented dairy industry (as well as other exporting agricultural and horticultural sectors). This dairy expansion, which has to a large extent replaced extensive sheep farming in the lower and flatter regions of the country, is overwhelmingly based on rotational grazing practice, involves active nutrient and feed supplement management and is in some drier regions supported with irrigation of pastures. Managing the land for food production has

thus accelerated and intensified carbon, nutrient and water cycles and increased the country's agricultural greenhouse gas emissions by 17% from 1990 to 2019 (Ministry for the Environment, 2021).

The carbon budgets of agroecosystems are characterised by large exports of carbon in products such as grain, milk, meat or wool, as well as imports in fertilisers and animal excreta, in addition to the net ecosystem exchange (NEE) of carbon. To assess whether an agroecosystem gains or loses carbon over time, these exports and imports need to be quantified together with NEE to obtain the net ecosystem carbon balance (NECB). A productive system is usually a net CO₂ sink, but there are examples from the OzFlux network where agroecosystems were a net carbon source (Laubach et al., 2019; Rutledge et al., 2017; Wall, Campbell, Morcom, et al., 2020; Wall, Campbell, Mudge, et al., 2020; Webb et al., 2018) due to net carbon exports exceeding NEE. These studies repeatedly suggest that the sign, strength and annual pattern of NECB are strongly impacted by farm management (Giltrap et al., 2020; Hunt et al., 2016; Rutledge et al., 2015; Wall, Campbell, Morcom, et al., 2020; Wall, Campbell, Mudge, et al., 2020). Agroecosystems on peat soils were both a net CO₂ source and a net carbon source (Campbell et al., 2021; Goodrich et al., 2017).

Water fluxes are of critical concern in agroecosystems, where irrigation decisions are informed by balancing crop water use with yield-based revenue, irrigation costs and regulatory limits for nutrient leaching. There are concerns that the practice of irrigation, increasingly widespread in NZ, may lead to net carbon losses, and soil-core sampling studies point in this direction (Mudge et al., 2017). However, flux measurements over irrigated pasture did not find any carbon losses throughout the three years of measurements (Laubach & Hunt, 2018). In another study, capturing flux measurements over lucerne, it was found that total evaporation and drainage increased in response to irrigation, relative to a nearby non-irrigated lucerne crop, with the benefit of larger biomass production at the cost of greater net carbon losses (Laubach et al., 2019). Recent modelling efforts calibrated with flux measurements have provided some insights into which combinations of livestock management and environmental factors lead to carbon gains or losses (Kirschbaum et al., 2017; Liáng et al., 2021). The degree and direction of coupling between evaporation and NEE can contribute to a greater understanding of agroecosystem function (Cleverly et al., 2020).

A globally significant consequence of agricultural food production is emissions of greenhouse gases, including CH₄ (predominantly from ruminant animals and rice farming) and N₂O (predominantly from microbial soil processes, stimulated by N addition with fertilisers and animal excreta). Technological challenges and instrumentation costs have limited the usage of the eddy covariance method for measuring fluxes of these non-CO₂ greenhouse gases; hence, other micrometeorological methods have predominantly been applied within the OzFlux network. Laubach and Hunt (2018) used a flux-gradient technique to measure CH₄ fluxes over three years at paired grazing sites in Canterbury, New Zealand, somewhat surprisingly finding that CH₄ fluxes were consistently positive (i.e. the grazed pastures were a net source of methane) most of the time, even in the absence of

cattle. Net emissions of similar magnitude have recently been found on farms in the north of NZ (J. P. Goodrich, pers. comm. 2021). The source of these CH₄ emissions is unknown, and therefore it is not clear whether they are related to agricultural management. The flux gradient technique has also been applied to measure nitrous oxide emissions from dairy pasture (Laubach & Hunt, 2018). Wecking et al. (2020) compared N₂O emissions, obtained with eddy covariance, to those calculated using locally determined emission factors, from small chamber plots treated with excreta and fertiliser. Both studies found that emission factors underestimated the N₂O flux, since the chamber studies do not include N₂O background emissions and possibly also due to a lack of seasonal variability in emissions factors (Laubach & Hunt, 2018; Wecking et al., 2020).

Studies of the fluxes from agroecosystems are gaining momentum as a robust approach to quantifying the efficacy of land management practices that aim to reduce or mitigate greenhouse gas emissions. To this end, paired sites approaches are promising (Laubach & Hunt, 2018; Laubach et al., 2019). Recent studies have overcome the cost of employing duplicate flux measurement systems with a split-footprint approach (Goodrich et al., 2021; Wall, Campbell, Morcom, et al., 2020; Wall, Campbell, Mudge, et al., 2020), wherein an eddy covariance system is placed at the boundary between paired sites. Another possible approach lies in the development of low-cost measurement systems (Hill et al., 2016). Communication between disciplines and with industry and policy makers will be central to OzFlux and the global flux community to help transition agricultural practices towards climate-smart food systems.

8 | LESSON 6—ADVANCES MADE VIA SYNERGIES WITH REMOTE SENSING

The initiation of OzFlux was shortly preceded by NASA's Earth Observing System (EOS) that introduced the first suite of satellite-based global ecology products for long-term monitoring of ecosystem functioning, phenology, disturbance and plant stress (Xiao et al., 2019). The validity and robustness of these first biophysical products from remote sensing were challenged by the diversity of landscapes and extreme environments of Australia (Hill et al., 2006; Kanniah et al., 2009; Sea et al., 2011). For example, Leuning et al. (2005) reported that the moderate resolution imaging spectrometer (MODIS) LAI product overestimated in-situ LAI more than twofold over the moderately open, wet sclerophyll forest at the Tumbarumba OzFlux site. These native forests are known for their highly clumped crown architecture and vertical leaf inclination angle (Anderson, 1981). The MODIS GPP product estimated the annual amplitude of tower GPP fluxes quite well but performed less well in estimating the seasonal phase of variation (Leuning et al., 2005). These assessments of remotely-sensed products ultimately resulted in more accurate satellite products and understanding in what the satellite actually measures.

On the other hand, Sea et al. (2011) and Eamus et al. (2013) reported good agreement between MODIS LAI and hemispherical

photography derived LAI in open-canopied savanna ecosystems of the Northern Territory. MODIS vegetation indices (VIs) combined with meteorological data estimated GPP and latent heat flux (LE) with relatively high accuracy where ecosystem processes are phenologically driven, such as in Australian wet to dry tropical savannas, grasslands and croplands (Cleugh et al., 2007; Glenn et al., 2011; Ma et al., 2013; Moore et al., 2017; Zhang et al., 2008). However, in temperate and Mediterranean evergreen Australian forests/woodlands, the VI and LAI products were seasonally out of phase with GPP and found to be better proxies of photosynthetic 'infrastructure' capacity (P_c) than GPP (Restrepo-Coupe et al., 2016). Broich et al. (2014) found extensive retrieval failures of the MODIS phenology product over the arid and semi-arid regions of Australia, which led to the development of an Australian phenology product (<https://portal.tern.org.au/>) to better understand arid vegetation responses to Australia's climate extremes (Ma et al., 2015, 2016, 2016). Annually integrated VIs are a remote sensing surrogate of ecosystem productivity and have revealed the large sensitivity of interannual variations in productivity to precipitation variability in Australia, relative to all other continents (Figure 6; Ma et al., 2016).

Synergies between OzFlux and remote sensing have been used in diagnosing broad-scale ecosystem responses to extreme events, including large scale, significant rainfall events that trigger continental-scale green-up of arid and semi-arid ecosystems (see lesson 4). These continent-wide green flushes can contribute significantly to the global land carbon sink and induce sea-level anomalies, as occurred in 2010–2011 (Detmers et al., 2015; Fasullo et al., 2013). Such information is important in attributing the drivers of short term variability in the Earth system (e.g. are changes to the carbon sink due to human mitigation efforts or responses of the biosphere to prior events?). Ma et al. (2016) diagnosed this continental-scale event by integrating multiple satellite measures of atmospheric CO_2 (GOSAT), gravitational total water storage (GRACE), VIs (MODIS) and solar-induced chlorophyll fluorescence (SIF, GOME-2) with OzFlux tower derived NEP. They analysed the hydroclimate drivers and pulse response behaviour of carbon fluxes during the big wet and reported that semi-arid Australian net CO_2 uptake was highly transient and rapidly dissipated by subsequent drought. The accuracies of the remotely sensed CO_2 retrievals and the atmospheric transport models are approaching the levels needed to constrain CO_2 fluxes to estimate net biome productivity

(NBP) from the natural biosphere (Buchwitz et al., 2017; Kondo et al., 2016).

The OzFlux network capitalises on skills and infrastructure through strong collaborations of people both at a national level and through international networks (Figure 2), including SpecNet (Gamon et al., 2006, <https://specnet.info/tumbarumba/>) and the Australian Phenocam Network (<http://phenocam.org.au/>). SpecNet sites are equipped with hyperspectral instruments and play important roles in linking in situ optical measures (fPAR, VIs and SIF) from tower platforms with flux observations, to explore mechanistic and scaling relationships (Leuning et al., 2006; Woodgate et al., 2020). The phenocam network enables high temporal image-based recognition of understory/overstory dynamics at species levels, and thus enables leaf level demography, ontogeny and phenology analyses (Moore, Brown, et al., 2016; Wu et al., 2016). These sub-daily, near-ground spectral and phenocam measurements bridge temporal, spatial and spectral scales with airborne and satellite remotely sensed proxies of canopy and ecosystem function.

Capturing the range of global variability in ecosystems is critical for accurately calibrating, validating and upscaling satellite algorithms and modelled outputs using high-quality ground-level data. In a global flux tower analysis using MODIS satellite products and meteorological drivers, Tramontana et al. (2016) found that carbon and water fluxes from extreme climates and Southern Hemisphere flux sites were less accurately simulated than Northern Hemisphere forested and temperate climate sites. The OzFlux sites, located in globally under-represented areas, have the potential to reduce these uncertainties in global carbon and water flux products. OzFlux sites account for a large proportion of global land surface FLUXNET observations in biomes located at high mean annual temperatures and with extreme climate variability, as shown in Figures 1 and 3 (Van Der Horst et al., 2019), making them crucial for the validation of new satellite sensors, novel algorithms and in the development of national and global products and models (Barraza Bernadas et al., 2018; Barraza et al., 2015, 2017; Guerschman et al., 2009; Pham et al., 2019; Sanders et al., 2016; Verma et al., 2017; Zhang et al., 2019).

While early remote sensing work was focussed primarily on VIs and LAI, an increasing number and diversity of observations can now target specific components of the terrestrial carbon cycle and water cycle at high temporal and spatial resolution (Schimel & Schneider,

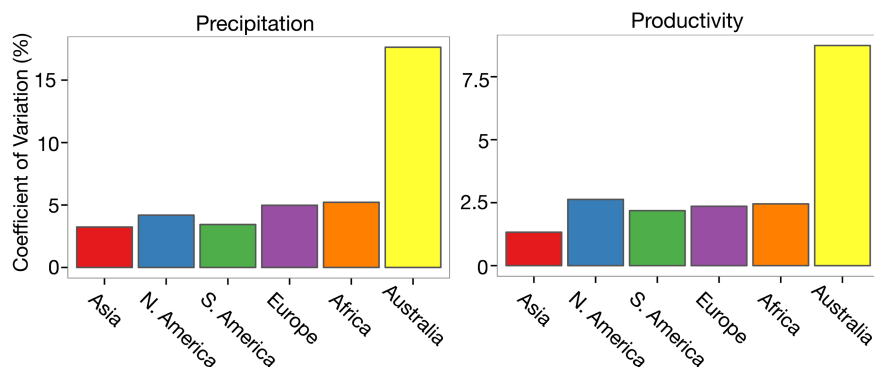


FIGURE 6 Coefficient of variation (%) in annual precipitation and annual vegetation productivity across six continents showing that Australia has a significantly higher variability in precipitation and corresponding productivity, as measured with the MODIS annual integrated EVI over a 15-year reference period from 2000 to 2014. Reproduced with permission from Ma et al. (2016)

2019). For example, the use of SIF and VIs together can be used to disentangle controls of canopy structure from physiology on GPP (Magney et al., 2019; Springer et al., 2017; Verma et al., 2017). This is particularly important for evergreen canopies (dominant in Australia and New Zealand) where GPP is often decoupled from VIs (Restrepo-Coupe et al., 2016).

The current generation geostationary satellites (e.g. Himawari-8) provide sub-daily, 10-min image acquisition frequencies in near real-time across Australia, enabling integration with diurnal fluxes for refined insights into ecosystem dynamics. A metric of canopy structure, canopy clumping index, was recently retrieved from sub daily measures from the Deep Space Climate Observatory (DSCOVR) satellite and evaluated at OzFlux sites (Pisek et al., 2021). The International Space Station (ISS) has three instruments that provide regional-diurnal measures of (1) Evapotranspiration from the ECOSYSTEM Spaceborne Thermal Radiometer Experiment (ECOSTRESS) at 70 m resolution; (2) SIF from the Orbiting Carbon Observatory-3 (OCO-3), at 100 m resolution and (3) Biomass and canopy structure from the Ecosystem LiDAR Global Ecosystem Dynamics Investigation (GEDI) instrument, at 25 m to 1 km resolutions (Xiao et al., 2021). Together these instruments provide unprecedented opportunities to assess diurnal variations in GPP, ET (evapotranspiration, the mass equivalent of LE) and thereby water use efficiency (WUE) at different times of day, with OzFlux sites being critical to validate these products (Fisher et al., 2020; Xiao et al., 2021). Other sensors include soil moisture mapping, vegetation optical depth, atmospheric trace gases (CO_2 , CH_4 , CO) for inversion studies and advanced hyperspectral sensors for canopy traits. These new remote sensing advances will be vital to scale knowledge (Figure 2) of ecosystem processes from OzFlux sites to landscape and continental scales in the context of climate change.

9 | LESSON 7—ADVANCES MADE VIA SYNERGIES WITH MODELLING

One of the most important outcomes from OzFlux has been the ability to constrain models used to quantify and predict terrestrial carbon and water fluxes, from site-scales (Kirschbaum et al., 2007, 2015) to the continent (Decker, 2015), using multi-annual, continuous data from around Australia and sampling a range of bioclimates. Foremost among these outcomes was the construction of a full continental carbon budget for Australia (Haverd, Raupach, Briggs, Canadell, Davis, et al., 2013). This work used multiple data sources, including OzFlux data, to constrain the CABLE LSM (Wang et al., 2011). The data-constrained estimate of Australia's NBP for 1990–2011 was $36 \pm 29 \text{ Tg C yr}^{-1}$ (Haverd, Raupach, Briggs, Canadell, Davis, 2013; Haverd, Raupach, Briggs, Canadell, Isaac, et al., 2013), with annual net primary productivity (NPP) quantified at $2.2 \pm 0.4 \text{ Pg C yr}^{-1}$.

Similarly, OzFlux data underpin operational water modelling in Australia. Although potential evaporation can be quantified from a spatial network of pan evaporation data dating back to 1975 (Roderick & Farquhar, 2004; Stephens et al., 2018), OzFlux sites

provide the only observations of actual evapotranspiration (AET). OzFlux AET data were used in the evaluation of modelled evapotranspiration in the operational AWRA model used for the Australian Bureau of Meteorology's water information services (van Dijk, 2010; Frost et al., 2015). OzFlux data have also been used to constrain large-scale AET estimates from process- and satellite-based models, yielding a data-constrained estimate of mean Australian AET over the period 2000–2010 of $360 \pm 205 \text{ mm yr}^{-1}$ (Hobeichi et al., 2021). The marked uncertainty in continental-scale estimates of Australia's terrestrial carbon and water fluxes not only stems in part from the inherent climate variability (lesson 1) but also underlines the challenges faced in advancing our understanding of Australia's terrestrial biogeochemical cycles and budgets.

OzFlux data have also been an important resource to benchmark, evaluate and improve model formulations at time scales ranging from sub-daily (Abramowitz, 2012; Houghton et al., 2016) to inter-annual (Wang et al., 2011). The coverage of extreme events in the dataset has been of significant value (De Kauwe et al., 2019; Yang et al., 2019). The high interannual variability in rainfall has enabled the use of OzFlux data to uncover systematic biases in LSMs in simulating carbon and water fluxes during drought (Haverd, Ahlström, et al., 2016; Haverd, Smith, Raupach, et al., 2016; Haverd, Smith, Trudinger, et al., 2016; Li et al., 2012; Torre et al., 2019; Ukkola et al., 2016), identifying priorities for model development to reduce uncertainties in future projections of drought (De Kauwe et al., 2020; Stocker et al., 2018) and water resources.

The unique coverage of the savanna biome provided by the North Australian Tropical Transect component of OzFlux has helped identify limitations in terrestrial biosphere models in representing savanna ecosystems (Haverd, Smith, Raupach, et al., 2016; Whitley et al., 2016), providing directions for improving the modelling of savannas globally (Whitley et al., 2017). The phenology of leaf area, root water uptake and disturbance from fire were highlighted as key areas of uncertainty for future research.

The open-access availability of OzFlux data has enabled immediate improvements to a diversity of models. For example, AET data were used to reformulate the representation of soil evaporation during the wet season, resulting in significant improvements in AET predictions of the GRASP suite of models used operationally in Queensland for pasture and grazed woodland systems (Owens et al., 2019). However, OzFlux data have principally been used to evaluate models, rather than to drive theory development. This gap exists because ancillary site measurements needed to interpret the measured fluxes in the right (ecosystem-specific) context are often lacking (e.g. plant physiological and structural traits, phenology, biomass, LAI and soil moisture). To address this shortcoming, future focus should lie on the provision of a standardised set of these ancillary measurements at regular time intervals. The founding of Australia's first Critical Zone Observatory—a monitoring network covering the top of the tree canopy to the groundwater—at five sites across Australia—aims to make a significant contribution towards reducing scaling uncertainties over the next decade (De Kauwe et al., 2017; Medlyn et al., 2017).

There are several obvious opportunities to develop new model theory. Linking OzFlux data, particularly sites with concurrent measurements of (deep) soil moisture (e.g. the wet sclerophyll forest site, Wombat, in southeast Australia) with satellite remote sensing, would enable the development of new theory to understand leaf growth dynamics under changing water availability. Measurements of hydraulic traits across the OzFlux network (Peters et al., 2021), coupled with eddy covariance data, would facilitate the development and testing of new theories governing plant controls on transpiration. A key question relates to how the carbon and water cycles will change in the future; answering this will require longevity across the OzFlux and the wider FLUXNET network.

10 | LESSON 8—THE IMPORTANCE OF LONG-TERM MEASUREMENTS TO DETECT DECADEAL SCALE EVENTS AND CLIMATE CHANGE EFFECTS

Given the geographical extent of the Australian and New Zealand regions and the associated large range of climate drivers, climatic variability is naturally high (King et al., 2020), and this variability is increasing due to changes in climate and land use (Head et al., 2014; King et al., 2020). Regional climate variability is also driven by complex, large-scale ocean–atmosphere influences that operate at frequencies from weeks to decades and have a strong influence on rainfall (King et al., 2020; Rogers et al., 2017), and therefore drives variability of ecosystem dynamics (Cleverly, Eamus, Luo, et al., 2016) (See also lesson 2). The net result is a climate system which operates in widely varying states spatially and temporally, driving periods of drought, flood and heatwaves (Freund et al., 2017; Kiem et al., 2016; Perkins-Kirkpatrick et al., 2016) that are increasing in severity with climate change (Cai et al., 2014, 2021). Extreme events have a disproportionate effect on annual carbon exchange at regional to continental scales (Zscheischler et al., 2017) and long-term monitoring of ecosystem carbon exchange, water use and resource use efficiency is required to understand and predict ecosystem responses to the changing climatic range. This is particularly important in Australia, which is a global hot spot for variability—especially in semi-arid ecosystems, which exhibit large and ‘asymmetrical’ responses of GPP to rainfall variability (Haverd, Ahlström, et al., 2016). This large interannual variability makes detecting long-term trends from short records extremely difficult (Baldocchi et al., 2018). On the other hand, Australia may also provide an example to inform other continents about how ecosystems will adapt to increased climate variability with resource availability hard to predict.

A comprehensive understanding of interannual and interdecadal variability of the carbon cycle and its drivers requires long-term data (>50 years) (Fu et al., 2019; He et al., 2019; Jung et al., 2017; von Buttlar et al., 2018; Zscheischler et al., 2016). Continued operation of existing sites and the expansion of the global eddy covariance monitoring network (Baldocchi, 2019), together with the

increasing length of the satellite record, will provide the observational constraints to gain this understanding. The two decades of observations in the OzFlux network span several significant ENSO events (Figure 7), and this length of record can be used to detect change in ecosystem properties as a function of short-term or high-frequency disturbances such as fire, insect attack, drought and cyclones (Beringer et al., 2007; Hutley et al., 2013; Keith et al., 2012). The network has captured fluxes during the ‘Millennial Drought’ from 1997 to 2009 that was followed by the globally significant southern hemisphere La Nina of 2010/2011, the severe El Niño event of 2015/2016, the unusually hot and dry spring of 2019, and flooding associated with the 2021 wet season across the southeast Australian seaboard. However, in terms of long-term climate trends, OzFlux has only a few sites with 20 years of data.

The responses and interannual variability of two long-term but contrasting OzFlux sites is shown in Figure 8, where we illustrate trends in water- and radiation-use efficiencies (WUE=GPP/LE, RUE=GPP/APAR) for a managed, temperate mixed Eucalypt forest (AU-Tum) and a tropical savanna in the NT (AU-How). To estimate absorbed PAR (APAR) for each site, we used the MODIS 8-day, 500 m resolution fractional absorbed photosynthetically active radiation product (fPAR, MOD15A2) interpolated to provide a daily estimate of fPAR which was then used to scale daily measures of short-wave radiation after Garbulsky et al. (2010).

WUE is ~30% higher in the temperate, wet sclerophyll forest at Tumarumba (AU-Tum) than the tropical savanna at AU-How, which is surprising given C4 grasses (high WUE) dominate the understorey of the savanna ecosystem. However, these grasses are largely annual and are only active 4–5 months of the wet season, whereas the evergreen C3 woody species of Australia's temperate forests are active all year (Eamus et al., 2001; Moore, Beringer, et al., 2016). Frequent savanna fires (2 in 3 years) scorch the woody canopy and post-fire canopy reconstruction results in high respiratory losses (Cernusak et al., 2006) with the ecosystem a net source of CO₂ for months after fire, whereas LE recovers within weeks (Beringer et al., 2007). This post-fire recovery phase is a period of lower WUE, and the savanna ecosystem has a lower-than-expected WUE because of these ecosystem characteristics.

Trends in WUE and RUE are highly statistically significant at AU-Tum ($p < 0.01$), and WUE increased by 16% over 18 years, whereas the tropical savanna site only increased by 6% (Figure 8). Over the period of observation, atmospheric CO₂ concentrations increased by about 10%, and the trend in WUE at AU-How is consistent with theoretical expectations of increased photosynthesis and WUE (Kirschbaum & McMillan, 2018; Walker et al., 2021). However, the trend at AU-Tum (16% for WUE, 30% for RUE) exceeds what could be reasonably attributed to CO₂ fertilisation alone, suggesting recovery from disturbance events (e.g. insect outbreaks, van Gorsel et al., 2013) plus increasing efficiency as the stand ages and grows in response to commercial forestry activities.

The spatial and temporal limitations of the OzFlux network highlight the importance of integrating long-term flux observations with remote sensing and modelling studies (lessons 6 and 7).

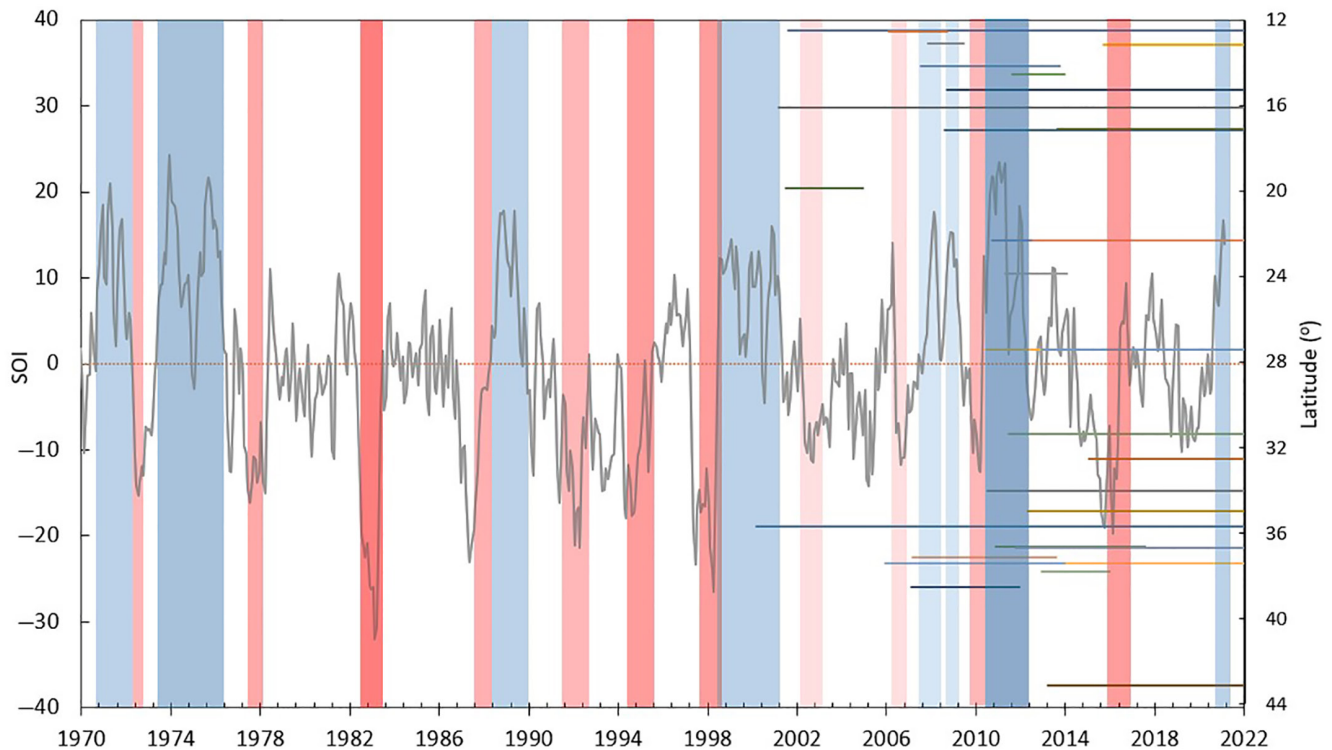


FIGURE 7 Monthly SOI record from 1970 to 2021 with key El Niño (red bars) and La Niña (blue bars) events that led to severe flooding, drought and fire events in Australia. Bar colours represent event severity (strong, moderate or weak). Overlaying the SOI timeseries is the observation periods for all previous and current Australian OzFlux and Supersites plotted as coloured lines using site latitude. Site data durations were taken from the TERN OzFlux data portal (www.ozflux.org.au/monitoringsites/index.html) and ENSO periods were taken from the Australian Bureau of Meteorology (www.bom.gov.au/climate/enso/enlist)

As climate variability increases, there is a clear imperative to maintain long-term monitoring sites and invest in modelling systems structured to the physiological properties of Australian and New Zealand vegetation to assess their response to increasing climatic variability and disturbance. Australian ecosystems have shown a degree of resilience to date (De Kauwe et al., 2020), but only long-term data will enable us to detect tipping points across the spectrum of Australian and New Zealand ecosystems and improve our ability to forecast potential systematic ecological changes (Bergstrom et al., 2021; Laurance et al., 2011). Assessing cumulative long-term impacts on diverse ecosystems is critical for the management of both natural and food production systems. It is, therefore, crucial to maintain the existing network to ensure the continuity of flux data and increase the number of long-term sites into the future.

11 | THE STRENGTH OF OzFlux AND OUR VISION FOR THE FUTURE

The IPCC's Sixth Assessment Working Group I Report (IPCC, 2021) documents an increased rate and greater certainty of global warming relative to previous assessments. Australia's climate has already warmed by 1.44°C since national records began in 1910 (Australian Bureau of Meteorology & CSIRO, 2020) and although we have

shown that Australian ecosystems currently have some resilience, the increased frequency and intensity of climate extremes, and an emerging drying trend in the southern part of the continent, have the potential to push some ecosystems (e.g. temperate forests) over tipping points (Perkins-Kirkpatrick et al., 2016). As such there is a growing imperative to use and build on our knowledge of ecosystem processes and emergent phenomena (Karan et al., 2016). These processes must be studied across a range of temporal and spatial scales to be properly understood and integrated into modelling. Synergistic network science has allowed these emergent processes to be understood, as patterns in space and time are revealed by multiplying manifold observations across numerous individual researchers and sites.

The need to continue operating OzFlux and other ecosystem observatories is increasingly important to (1) inform the science and models needed for accurate ecological forecasts and longer-term projections of responses to climate extremes; (2) document recovery from disturbances, and evaluate potential new land management strategies and longer-term trends in the effects of observed climate change and variability—this demands multi-decadal and continuous observations; (3) diagnose interannual variability in the carbon cycle and net greenhouse gas emissions, and verify carbon market products and greenhouse-gas mitigation approaches; (4) evaluate and improve models of terrestrial ecosystem feedbacks to climate change, and (5) evaluate and improve simulations of the feedbacks between

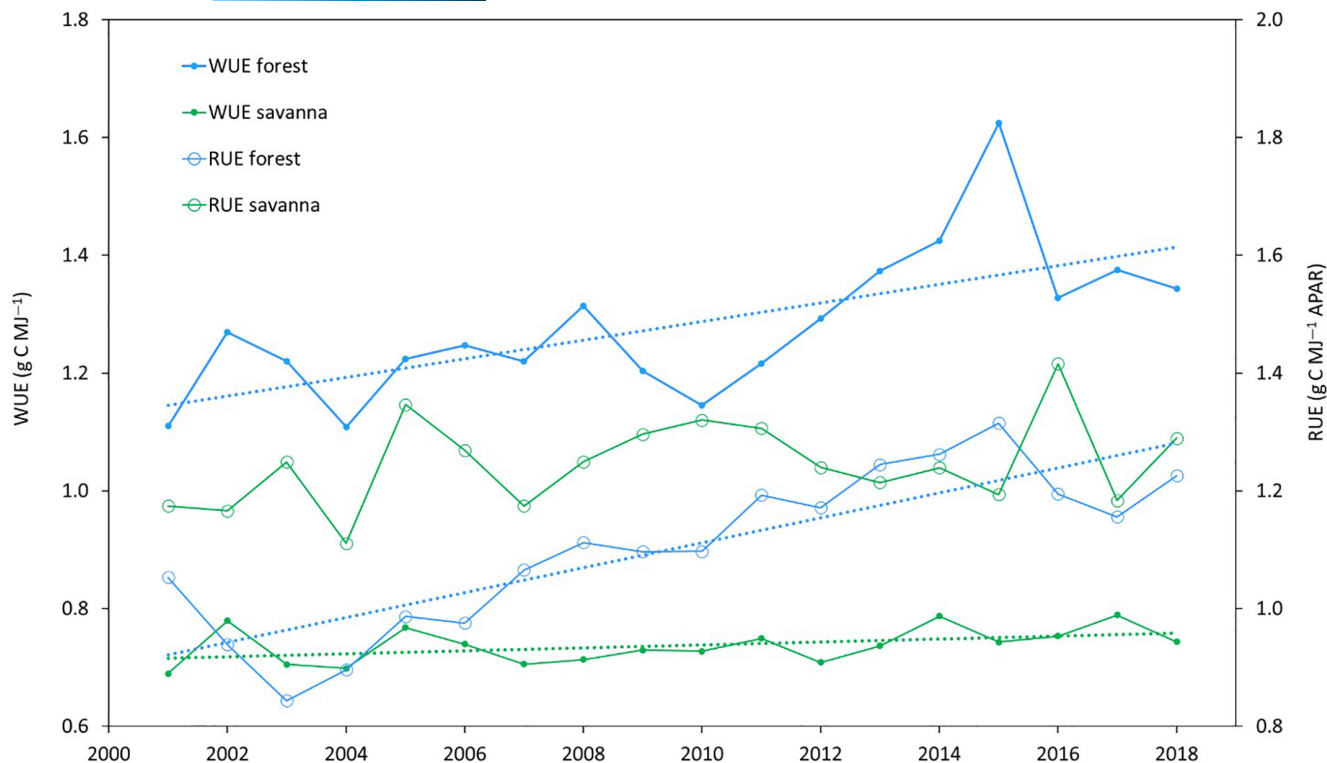


FIGURE 8 Timeseries of observed ecosystem water use and radiation use efficiency from two OzFlux sites with 20-year records: tropical savanna at the Howard Springs site and temperate Eucalypt forest at the Tumbarumba site. Trend lines are given for significant time series ($p < 0.05$) using the non-parametric Mann Kendall test

the land and atmosphere in the context of short-duration heatwaves and drought.

Ecosystems are expected to experience continued long-term climate change and greater variability along with increased disturbance leading to a loss of ecosystem services. To best maintain our ecosystems and their services, we must anticipate and plan for these changes using predictive modelling and ecological forecasting. Developing this capability is crucial and will require forecasting (over the near term) and projections over multidecadal time scales) using real-time flux information (OzFlux), ecological observing infrastructure (e.g. TERN), new and emerging satellite information and a new iterative model forecasting paradigm (Dietze et al., 2018). Australia's 2016 National Research Infrastructure Roadmap also identified a need to establish a National Environmental Prediction System (<https://science.uq.edu.au/neps>). This could facilitate integration of environmental observations with predictive modelling, thus improving environmental risk management. New streams of earth observing satellite data are emerging from advanced sensors. However, the interpretation of their underlying ecological signals requires continued validation with ground-based sensors and leaf-level measurements. Using spectral indices and more direct observations of vegetation productivity through SIF provide excellent prospects for better detection of ecosystem stress (e.g. NASA ECOSTRESS, ESA FLEX). OzFlux will continue to participate as a key provider of ground stations in the Southern Hemisphere and will provide opportunities for further synergies between remote sensing and ecosystem ecologists.

Ongoing collaboration between ecophysiologicals and ecosystem flux researchers is leading to improved mechanistic understanding of the role of the terrestrial vegetation in the annual and inter-decadal hydrologic cycle and the carbon balance across a wide range of ecosystems.

Of emerging interest is the connection of physiological/hydraulic traits to the dynamic role of the subsurface in regulating surface ecosystem fluxes and vegetation health. For example, an increasing body of international evidence illustrates how groundwater, deep soil moisture (Mu, De Kauwe, Ukkola, Pitman, Guo, et al., 2021, Mu, De Kauwe, Ukkola, Pitman, Gimeno, et al., 2021) and rock moisture (Hahm et al., 2019; McCormick et al., 2021) constrain the interannual variability of plant water use and productivity, potentially buffering ecosystems from water stress imposed by climate change (McLaughlin et al., 2017). Similarly, plant hydraulic models are revealing how the interaction of plant physiological traits with climate and soil at a given site, rather than these factors in isolation which control the risk of drought mortality (Feng et al., 2018, 2019). In the future, measurements of hydraulic traits across the OzFlux network (Peters et al., 2021), coupled with eddy covariance data, could facilitate the development and testing of new theories governing plant controls on transpiration.

A significant proportion of Australia's total ecosystem biomass (ca. 30%–50%, Spawn et al., 2020) is found in the subsurface, yet our understanding of how the subsurface environment changes and influences ecosystems is lagging. Newly funded critical zone observatories (CZOs), co-located at several OzFlux sites, are now installing the

equipment to monitor water, carbon and energy throughout deep soil profiles. By integrating observations of subsurface variation with the surface fluxes measured by OzFlux, these CZOs will offer better understanding of the interdependencies of carbon and water cycles across timescales and across the full vertical span of Australian ecosystems.

Ecosystem observatories are moving beyond CO₂ and water cycles to monitoring other greenhouse gases, especially emissions of CH₄ from wetlands and N₂O from agricultural systems as highlighted in the lessons above. These potent greenhouse gases can now be measured at temporal and spatial scales that are relevant to land management and planning for mitigation of climate change.

There is currently a high demand for new researchers with skills in environmental monitoring, sensors and data analysis; however, it is a challenge to sustain training of postgraduate students and our capacity in the discipline of global change biology. Recruitment of new talent needs to start at the undergraduate level or earlier, to ensure a flow of quantitatively skilled researchers who are passionate about ecosystem science. Educational collaborations among engineers, atmospheric scientists, hydrologists, ecologists, physicists and others will set the stage for the next generation of environmental leadership and stewardship. OzFlux will continue to play a major role in training this next generation and in providing the ecosystem data which scientists, the public and managers/government can rely on in understanding our rapidly changing environment in Australia and New Zealand.

ACKNOWLEDGEMENTS

We dedicate this paper to the memory of Dr Vanessa Haverd, who died in January 2021. An avid user of FluxNet data, Vanessa was a highly respected colleague of our OzFlux community who greatly valued her enthusiastic collaboration. Her innovative research demonstrated the power of combining modelled and observed data and highlighted the value of networks such as OzFlux. She is sorely missed by us all in the OzFlux community. In 2009 funding was provided to the Australia Terrestrial Ecosystem Research Network (TERN) (<http://www.tern.org.au>) through the Australian government's National Collaborative Research Infrastructure Strategy (NCRIS), which provides support for many OzFlux sites along with other capabilities such as intensive ecosystem monitoring (SuperSites), remote sensing (AusCover), modelling (eMAST), TERN synthesis (ACEAS), coastal, soils and plot-based networks (AusPlots), long-term ecological research network facilities (LTERN) and transects (Australian Transect Network). WW is supported by an Australian Research Council DECRA Fellowship (DE190101182). A.M.U acknowledges support from an ARC DECRA fellowship (DE200100086). S.H. acknowledges the support of the Australian Research Council Centre of Excellence for Climate Extremes (CE170100023). M.J. acknowledges support from the ARC DECRA fellowship (DE210101654). A.H. & T.N. acknowledge support from TERN project 'Developing best-practice Himawari data products for enhanced sub-daily monitoring of Australia's ecosystems'. M.D.K. and A.J.P. acknowledge support from the Australian Research Council (ARC) Centre of Excellence for Climate Extremes (CE170100023), the ARC Discovery Grant (DP190101823) and the NSW Research Attraction and Acceleration

Program. BEM acknowledges support from Australian Research Council Laureate Fellowship FL190100003. The research of A.J.N. was carried out at the Jet Propulsion Laboratory, California Institute of Technology, under a contract with the National Aeronautics and Space Administration (80NM0018D0004). X. M. was supported by the National Natural Science Foundation of China (42171305) and Natural Science Foundation of Gansu Province, China (21JR7RA499). Open access publishing facilitated by The University of Western Australia, as part of the Wiley - The University of Western Australia agreement via the Council of Australian University Librarians.

AUTHOR CONTRIBUTIONS

This manuscript was designed after a 20 years of OzFlux celebration conference held in 2020. The manuscript was prepared by Beringer, Moore and Cleugh with input from all co-authors. Each lesson was compiled by a section lead as follows; Cleugh led 'the genesis of OzFlux', Griebel led Lesson 1, Cleverly led Lesson 2, Moore led Lesson 3, Campbell led Lesson 4, Grover and Laubach led Lesson 5, Huete and van Niel led Lesson 6, De Kauwe and Kirschbaum led Lesson 7 and Hutley led Lesson 8.

DATA AVAILABILITY STATEMENT

The OzFlux data that support the findings of this study are openly available from the OzFlux data portal at <https://www.ozflux.org.au/>. Specific sites used were Tumberumba (<https://doi.org/10.100/14241>), warra (<https://doi.org/10.100/22566>), whroo (<https://doi.org/10.100/14232>), Wombat State Forest (<https://doi.org/10.100/14237>), and Howard Springs (<https://doi.org/10.100/14234>). Data to support production of Figure 5 were also provided by the Australian Bureau of Meteorology via www.bom.gov.au/climate/enso/enlist.

ORCID

Jason Beringer  <https://orcid.org/0000-0002-4619-8361>
 Caitlin E. Moore  <https://orcid.org/0000-0003-0993-4419>
 Jamie Cleverly  <https://orcid.org/0000-0002-2731-7150>
 David I. Campbell  <https://orcid.org/0000-0003-3432-4372>
 Martin G. De Kauwe  <https://orcid.org/0000-0002-3399-9098>
 Miko U. F. Kirschbaum  <https://orcid.org/0000-0002-5451-116X>
 Anne Griebel  <https://orcid.org/0000-0002-4476-8279>
 Sam Grover  <https://orcid.org/0000-0002-8836-4815>
 Alfredo Huete  <https://orcid.org/0000-0003-2809-2376>
 Lindsay B. Hutley  <https://orcid.org/0000-0001-5533-9886>
 Johannes Laubach  <https://orcid.org/0000-0002-1355-1878>
 Tom Van Niel  <https://orcid.org/0000-0001-8445-5448>
 Stefan K. Arndt  <https://orcid.org/0000-0001-7086-9375>
 Alison C. Bennett  <https://orcid.org/0000-0002-8249-976X>
 Lucas A. Cernusak  <https://orcid.org/0000-0002-7575-5526>
 Derek Eamus  <https://orcid.org/0000-0003-2765-8040>
 Cacia M. Ewenz  <https://orcid.org/0000-0003-1466-8653>
 Mingkai Jiang  <https://orcid.org/0000-0002-9982-9518>
 Nina Hinko-Najera  <https://orcid.org/0000-0003-1253-7414>
 Sanaa Hobeichi  <https://orcid.org/0000-0001-6825-3854>

Jürgen Knauer  <https://orcid.org/0000-0002-4947-7067>
 Georgia R. Koerber  <https://orcid.org/0000-0002-3609-477X>
 Michael Liddell  <https://orcid.org/0000-0001-9754-8184>
 Xuanlong Ma  <https://orcid.org/0000-0003-1499-8476>
 Ian D. McHugh  <https://orcid.org/0000-0003-0122-5714>
 Belinda E. Medlyn  <https://orcid.org/0000-0001-5728-9827>
 Wayne S. Meyer  <https://orcid.org/0000-0003-3477-9385>
 Alexander J. Norton  <https://orcid.org/0000-0001-7708-3914>
 Elise Pendall  <https://orcid.org/0000-0002-1651-8969>
 Suzanne M. Prober  <https://orcid.org/0000-0002-6518-239X>
 Ram L. Ray  <https://orcid.org/0000-0002-7833-9253>
 Natalia Restrepo-Coupe  <https://orcid.org/0000-0003-3921-1772>
 Sami W. Rifai  <https://orcid.org/0000-0003-3400-8601>
 David Rowlings  <https://orcid.org/0000-0002-1618-9309>
 Louis Schipper  <https://orcid.org/0000-0001-9899-1276>
 Richard P. Silberstein  <https://orcid.org/0000-0002-9704-782X>
 Sally E. Thompson  <https://orcid.org/0000-0003-4618-5066>
 Anna M. Ukkola  <https://orcid.org/0000-0003-1207-3146>
 Aaron Wall  <https://orcid.org/0000-0002-5648-7351>
 Ying-Ping Wang  <https://orcid.org/0000-0002-4614-6203>
 Tim J. Wardlaw  <https://orcid.org/0000-0002-8686-0671>
 William Woodgate  <https://orcid.org/0000-0002-5298-4828>

REFERENCES

- Abatzoglou, J. T., Dobrowski, S. Z., Parks, S. A., & Hegewisch, K. C. (2018). TerraClimate, a high-resolution global dataset of monthly climate and climatic water balance from 1958–2015. *Scientific Data*, 5(1), 1–12. <https://doi.org/10.1038/sdata.2017.191>
- Abramowitz, G. (2012). Towards a public, standardized, diagnostic benchmarking system for land surface models. *Geoscientific Model Development*, 5(3), 819–827. <https://doi.org/10.5194/gmd-5-819-2012>
- Anderson, M. C. (1981). The geometry of leaf distribution in some South-eastern Australian forests. *Agricultural Meteorology*, 25(C), 195–206. [https://doi.org/10.1016/0002-1571\(81\)90072-8](https://doi.org/10.1016/0002-1571(81)90072-8)
- Australian Bureau of Meteorology, & CSIRO. (2020). State of the climate 2020. ISBN: 978-1-4863-1509-3.
- Baldocchi, D. (2008). Turner review No. 15. Breathing of the terrestrial biosphere: Lessons learned from a global network of carbon dioxide flux measurement systems. *Australian Journal of Botany*, 56(1), 1–26. <https://doi.org/10.1071/BT07151>
- Baldocchi, D., Chu, H., & Reichstein, M. (2018). Inter-annual variability of net and gross ecosystem carbon fluxes: a review. *Agricultural and Forest Meteorology*, 249, 520–533. <https://doi.org/10.1016/j.agrformet.2017.05.015>
- Baldocchi, D. D. (2019). How eddy covariance flux measurements have contributed to our understanding of global change biology. *Global Change Biology*, 26, 1–19. <https://doi.org/10.1111/gcb.14807>
- Baldocchi, D., Falge, E., Gu, L., Olson, R., Hollinger, D., Running, S., Anthoni, P., Bernhofer, C. H., Davis, K., Evans, R., Fuentes, J., Goldstein, A., Katul, G., Law, B., Lee, X., Malhi, Y., Meyers, T., Munger, W., Oechel, W., ... Wofsy, S. (2001). FLUXNET: A new tool to study the temporal and spatial variability of ecosystem-scale carbon dioxide, water vapor, and energy flux densities. *Bulletin of the American Meteorological Society*, 82(11), 2415–2434. [https://doi.org/10.1175/1520-0477\(2001\)082<2415:FANTTS>2.3.CO;2](https://doi.org/10.1175/1520-0477(2001)082<2415:FANTTS>2.3.CO;2)
- Barraza Bernadas, V., Grings, F., Restrepo-coupe, N., Huete, A., Bernadas, V. B., Grings, F., Restrepo-coupe, N., Barraza Bernadas, V., Grings, F., Restrepo-Coupe, N., Huete, A., Bernadas, V. B., Grings, F., & Restrepo-Coupe, N. (2018). Comparison of the performance of latent heat flux products over southern hemisphere forest ecosystems: estimating latent heat flux error structure using in situ measurements and the triple collocation method. *International Journal of Remote Sensing*, 39(19), 6300–6315. <https://doi.org/10.1080/01431161.2018.1458348>
- Barraza, V., Restrepo-Coupe, N., Huete, A., Grings, F., Beringer, J., Cleverly, J., & Eamus, D. (2017). Estimation of latent heat flux over savannah vegetation across the North Australian Tropical Transect from multiple sensors and global meteorological data. *Agricultural and Forest Meteorology*, 232, 689–703. <https://doi.org/10.1016/j.agrformet.2016.10.013>
- Barraza, V., Restrepo-Coupe, N., Huete, A., Grings, F., & van Gorsel, E. (2015). Passive microwave and optical index approaches for estimating surface conductance and evapotranspiration in forest ecosystems. *Agricultural and Forest Meteorology*, 213, 126–137. <https://doi.org/10.1016/j.agrformet.2015.06.020>
- Bennett, A. C., Arndt, S. K., Bennett, L. T., Knauer, J., Beringer, J., Griebel, A., Hinko-Najera, N., Liddell, M. J., Metzen, D., Pendall, E., Silberstein, R. P., Wardlaw, T. J., Woodgate, W., & Haverd, V. (2021). Thermal optima of gross primary productivity are closely aligned with mean air temperatures across Australian wooded ecosystems. *Global Change Biology*, 27(19), 4727–4744. <https://doi.org/10.1111/GCB.15760>
- Bergstrom, D. M., Wienecke, B. C., van den Hoff, J., Hughes, L., Lindenmayer, D. B., Ainsworth, T. D., Baker, C. M., Bland, L., Bowman, D. M. J., Brooks, S. T., Canadell, J. G., Constable, A. J., Dafforn, K. A., Depledge, M. H., Dickson, C. R., Duke, N. C., Helmstedt, K. J., Holz, A., & Johnson, C. R. ... Shaw, J. D. (2021). Combating ecosystem collapse from the tropics to the Antarctic. *Global Change Biology*, 1692–1703. <https://onlinelibrary.wiley.com/doi/full/https://doi.org/10.1111/gcb.15539>
- Beringer, J., Hutley, L. B., Abramson, D., Arndt, S. K., Briggs, P., Bristow, M., Canadell, J. G., Cernusak, L. A., Eamus, D., Edwards, A. C., Evans, B. J., Fest, B., Goergen, K., Grover, S. P., Hacker, J., Haverd, V., Kanniah, K., Livesley, S. J., Lynch, A., ... Uotila, P. (2015). Fire in Australian Savannas: from leaf to landscape. *Global Change Biology*, 11(1), 6641. <https://doi.org/10.1111/gcb.12686>
- Beringer, J., Hutley, L. B., Hacker, J. M., Neininger, B., & Paw U, K. T. (2011). Patterns and processes of carbon, water and energy cycles across northern Australian landscapes: From point to region. *Agricultural and Forest Meteorology*, 151(11), 1409–1416. <https://doi.org/10.1016/j.agrformet.2011.05.003>
- Beringer, J., Hutley, L. B., McHugh, I., Arndt, S. K., Campbell, D., Cleugh, H. A., Cleverly, J., De Dios, V. R., Eamus, D., Evans, B., Ewenz, C., Grace, P., Griebel, A., Haverd, V., Hinko-Najera, N., Huete, A., Isaac, P., Kanniah, K., Leuning, R., ... Wardlaw, T. (2016). An introduction to the Australian and New Zealand flux tower network - OzFlux. *Biogeosciences*, 13(21), 5895–5916. <https://doi.org/10.5194/BG-13-5895-2016>
- Beringer, J., Hutley, L. B., Tapper, N. J., & Cernusak, L. A. (2007). Savanna fires and their impact on net ecosystem productivity in North Australia. *Global Change Biology*, 13(5), 990–1004. <https://doi.org/10.1111/j.1365-2486.2007.01334.x>
- Beringer, J., Hutley, L. B., Tapper, N. J., Coutts, A., Kerley, A., & O'Grady, A. P. (2003). Fire impacts on surface heat, moisture and carbon fluxes from a tropical savanna in northern Australia. *International Journal of Wildland Fire*, 12(3–4), 333–340. <https://doi.org/10.1071/wf03023>
- Beringer, J., McHugh, I., Hutley, L. B., Isaac, P., & Kljun, N. (2017). Technical note: Dynamic INtegrated Gap-filling and partitioning for OzFlux (DINGO). *Biogeosciences*, 14(6), 1457–1460. <http://www.biogeosciences.net/14/1457/2017/>
- Beringer, J., & Tapper, N. J. N. J. (2000). The influence of subtropical cold fronts on the surface energy balance of a semi-arid site. *Journal of Arid Environments*, 44(4), 437–450. <https://doi.org/10.1006/jare.1999.0608>

- Broich, M., Huete, A., Tulbure, M. G., Ma, X., Xin, Q., Paget, M., Restrepo-Coupe, N., Davies, K., Devadas, R., & Held, A. (2014). Land surface phenological response to decadal climate variability across Australia using satellite remote sensing. *Biogeosciences*, 11(18), 5181–5198. <https://doi.org/10.5194/bg-11-5181-2014>
- Buchwitz, M., Reuter, M., Schneising, O., Hewson, W., Detmers, R. G., Boesch, H., Hasekamp, O. P., Aben, I., Bovensmann, H., Burrows, J. P., Butz, A., Chevallier, F., Dils, B., Frankenberg, C., Heymann, J., Lichtenberg, G., De Mazière, M., Notholt, J., Parker, R., ... Wunch, D. (2017). Global satellite observations of column-averaged carbon dioxide and methane: The GHG-CCI XCO₂ and XCH₄ CRDP3 data set. *Remote Sensing of Environment*, 203, 276–295. <https://doi.org/10.1016/J.RSE.2016.12.027>
- Cai, W., Borlace, S., Lengaigne, M., van Rensch, P., Collins, M., Vecchi, G., Timmermann, A., Santoso, A., McPhaden, M. J., Wu, L., England, M. H., Wang, G., Guilyardi, E., & Jin, F.-F. (2014). Increasing frequency of extreme El Niño events due to greenhouse warming. *Nature Climate Change*, 4(2), 111–116. <https://doi.org/10.1038/nclimate2100>
- Cai, W., Santoso, A., Collins, M., Dewitte, B., Karamperidou, C., Kug, J.-S., Lengaigne, M., McPhaden, M. J., Stuecker, M. F., Taschetto, A. S., Timmermann, A., Wu, L., Yeh, S.-W., Wang, G., Ng, B., Jia, F., Yang, Y., Ying, J., Zheng, X.-T., & Zhong, W. (2021). Changing El Niño–Southern Oscillation in a warming climate. *Nature Reviews Earth & Environment*, 2(9), 628–644. <https://doi.org/10.1038/s43017-021-00199-z>
- Campbell, D. I., Glover-Clark, G. L., Goodrich, J. P., Morcom, C. P., Schipper, L. A., & Wall, A. M. (2021). Large differences in CO₂ emissions from two dairy farms on a drained peatland driven by contrasting respiration rates during seasonal dry conditions. *Science of the Total Environment*, 760, 143410. <https://doi.org/10.1016/j.scitotenv.2020.143410>
- Campbell, D. I., Wall, A. M., Nieveen, J. P., & Schipper, L. A. (2015). Variations in CO₂ exchange for dairy farms with year-round rotational grazing on drained peatlands. *Agriculture, Ecosystems & Environment*, 202, 68–78. <https://doi.org/10.1016/j.agee.2014.12.019>
- Campbell, D. I., & Williamson, J. L. (1997). Evaporation from a raised peat bog. *Journal of Hydrology*, 193(1–4), 142–160. [https://doi.org/10.1016/S0022-1694\(96\)03149-6](https://doi.org/10.1016/S0022-1694(96)03149-6)
- Carpenter, R. J., Macphail, M. K., Jordan, G. J., & Hill, R. S. (2015). Fossil evidence for open, Proteaceae-dominated heathlands and fire in the Late Cretaceous of Australia. *American Journal of Botany*, 102(12), 2092–2107. <https://doi.org/10.3732/AJB.1500343>
- Cernusak, L. A., Hutley, L. B., Beringer, J., & Tapper, N. J. (2006). Stem and leaf gas exchange and their responses to fire in a north Australian tropical savanna. *Plant Cell and Environment*, 29(4), 632–646. <https://doi.org/10.1111/j.1365-3040.2005.01442.x>
- Chapin, F. S., Woodwell, G. M., Randerson, J. T., Rastetter, E. B., Lovett, G. M., Baldocchi, D. D., Clark, D. A., Harmon, M. E., Schimel, D. S., Valentini, R., Wirth, C., Aber, J. D., Cole, J. J., Goulden, M. L., Harden, J. W., Heimann, M., Howarth, R. W., Matson, P. A., McGuire, A. D., ... Schulze, E.-D. (2006). Reconciling carbon-cycle concepts, terminology, and methods. *Ecosystems*, 9(7), 1041–1050. <https://doi.org/10.1007/s10021-005-0105-7>
- Chapman, A. D. (2009). Numbers of living species in Australia and the world. Report for the Australian Biological Resources Study.
- Cleugh, H. A., Leuning, R., Mu, Q., & Running, S. W. (2007). Regional evaporation estimates from flux tower and MODIS satellite data. *Remote Sensing of Environment*, 106(3), 285–304. <https://doi.org/10.1016/j.rse.2006.07.007>
- Cleverly, J., Boulain, N., Villalobos-Vega, R., Grant, N., Faux, R., Wood, C., Cook, P. G., Yu, Q., Leigh, A., & Eamus, D. (2013). Dynamics of component carbon fluxes in a semi-arid Acacia woodland, central Australia. *Journal of Geophysical Research: Biogeosciences*, 118(3), 1168–1185. <https://doi.org/10.1002/jgrg.20101>
- Cleverly, J., Eamus, D., Edwards, W., Grant, M., Grundy, M. J., Held, A., Karan, M., Lowe, A. J., Prober, S. M., Sparrow, B., & Morris, B. (2019). TERN, Australia's land observatory: addressing the global challenge of forecasting ecosystem responses to climate variability and change. *Environmental Research Letters*, 14(9), 095004. <https://doi.org/10.1088/1748-9326/ab33cb>
- Cleverly, J., Eamus, D., Luo, Q., Coupe, N. R., Kljun, N., Ma, X., Ewenz, C., Li, L., Yu, Q., & Huete, A. (2016). The importance of interacting climate modes on Australia's contribution to global carbon cycle extremes. *Scientific Reports*, 6(1), 1–10. <https://doi.org/10.1038/srep23113>
- Cleverly, J., Eamus, D., Restrepo Coupe, N., Chen, C., Maes, W., Li, L., Faux, R., Santini, N. S., Rumman, R., Yu, Q., & Huete, A. (2016). Soil moisture controls on phenology and productivity in a semi-arid critical zone. *The Science of the Total Environment*. <https://doi.org/10.1016/j.scitotenv.2016.05.142>
- Cleverly, J., Eamus, D., van Gorsel, E., Chen, C., Rumman, R., Luo, Q., Coupe, N. R., Li, L., Kljun, N., Faux, R., Yu, Q., & Huete, A. (2016). Productivity and evapotranspiration of two contrasting semiarid ecosystems following the 2011 global carbon land sink anomaly. *Agricultural and Forest Meteorology*, 220, 151–159. <https://doi.org/10.1016/j.agrformet.2016.01.086>
- Cleverly, J., Vote, C., Isaac, P., Ewenz, C., Harahap, M., Beringer, J., Campbell, D. I., Daly, E., Eamus, D., He, L., Hunt, J., Grace, P., Hutley, L. B., Laubach, J., McCaskill, M., Rowlings, D., Rutledge Jonker, S., Schipper, L. A., Schroder, I., ... Grover, S. P. P. (2020). Carbon, water and energy fluxes in agricultural systems of Australia and New Zealand. *Agricultural and Forest Meteorology*, 287, 107934. <https://doi.org/10.1016/j.agrformet.2020.107934>
- Cook, G. D., & Nicholls, M. J. (2009). Estimation of tropical cyclone wind hazard for Darwin: Comparison with two other locations and the Australian wind-loading code. *Journal of Applied Meteorology and Climatology*, 48(11), 2331–2340. <https://doi.org/10.1175/2009JAMC2013.1>
- De Kauwe, M. G., Medlyn, B. E., Knauer, J., & Williams, C. A. (2017). Ideas and perspectives: How coupled is the vegetation to the boundary layer? *Biogeosciences*, 14(19), 4435–4453. <https://doi.org/10.5194/bg-14-4435-2017>
- De Kauwe, M. G., Medlyn, B. E., Pitman, A. J., Drake, J. E., Ukkola, A., Griebel, A., Pendall, E., Prober, S., & Roderick, M. (2019). Examining the evidence for decoupling between photosynthesis and transpiration during heat extremes. *Biogeosciences*, 16(4), 903–916. <https://doi.org/10.5194/bg-16-903-2019>
- De Kauwe, M. G., Medlyn, B. E., Ukkola, A. M., Mu, M., Sabot, M. E. B., Pitman, A. J., Meir, P., Cernusak, L. A., Rifai, S. W., Choat, B., Tissue, D. T., Blackman, C. J., Li, X., Roderick, M., & Briggs, P. R. (2020). Identifying areas at risk of drought-induced tree mortality across South-Eastern Australia. *Global Change Biology*, 26(10), 5716–5733. <https://doi.org/10.1111/gcb.15215>
- Decker, M. (2015). Development and evaluation of a new soil moisture and runoff parameterization for the CABLE LSM including subgrid-scale processes. *Journal of Advances in Modeling Earth Systems*, 7(4), 1788–1809. <https://doi.org/10.1002/2015MS000507>
- Detmers, R. G., Hasekamp, O., Aben, I., Houweling, S., van Leeuwen, T. T., Butz, A., Landgraf, J., Köhler, P., Guanter, L., & Poulter, B. (2015). Anomalous carbon uptake in Australia as seen by GOSAT. *Geophysical Research Letters*, 42(19), 8177–8184. <https://doi.org/10.1002/2015GL065161>
- Dietze, M. C., Fox, A., Beck-Johnson, L. M., Betancourt, J. L., Hooten, M. B., Jarnevich, C. S., Keitt, T. H., Kenney, M. A., Laney, C. M., Larsen, L. G., Loeschner, H. W., Lunch, C. K., Pijanowski, B. C., Randerson, J. T., Read, E. K., Tredennick, A. T., Vargas, R., Weathers, K. C., & White, E. P. (2018). Iterative near-term ecological forecasting: Needs, opportunities, and challenges. *Proceedings of the National Academy of Sciences of the United States of America*, 115(7), 1424–1432. <https://doi.org/10.1073/pnas.1710231115>

- Dinerstein, E., Olson, D., Joshi, A., Vynne, C., Burgess, N. D., Wikramanayake, E., Hahn, N., Palminteri, S., Hedao, P., Noss, R., Hansen, M., Locke, H., Ellis, E. C., Jones, B., Barber, C. V., Hayes, R., Kormos, C., Martin, V., Crist, E., ... Saleem, M. (2017). An ecoregion-based approach to protecting half the terrestrial realm. *BioScience*, 67(6), 534–545. <https://doi.org/10.1093/BIOSCI/BIX014>
- Drake, J. E., Tjoelker, M. G., Vårhammar, A., Medlyn, B. E., Reich, P. B., Leigh, A., Pfautsch, S., Blackman, C. J., López, R., Aspinwall, M. J., Crous, K. Y., Duursma, R. A., Kumarathunge, D., De Kauwe, M. G., Jiang, M., Nicotra, A. B., Tissue, D. T., Choat, B., Atkin, O. K., & Barton, C. V. M. (2018). Trees tolerate an extreme heatwave via sustained transpirational cooling and increased leaf thermal tolerance. *Global Change Biology*, 24(6), 2390–2402. <https://doi.org/10.1111/GCB.14037>
- Duffy, K. A., Schwalm, C. R., Arcus, V. L., Koch, G. W., Liang, L. L., & Schipper, L. A. (2021). How close are we to the temperature tipping point of the terrestrial biosphere? *Science Advances*, 7(3). <https://doi.org/10.1126/sciadv.aay1052>
- Duvert, C., Hutley, L. B. L. B., Beringer, J., Bird, M. I. M. I., Birkel, C., Maher, D. T. D. T., Northwood, M., Rudge, M., Setterfield, S. A. S. A., & Wynn, J. G. J. G. (2020). Net landscape carbon balance of a tropical savanna: Relative importance of fire and aquatic export in offsetting terrestrial production. *Global Change Biology*, 26(10), 5899–5913. <https://doi.org/10.1111/gcb.15287>
- Eamus, D., Cleverly, J., Boulain, N., Grant, N., Faux, R., & Villalobos-Vega, R. (2013). Carbon and water fluxes in an arid-zone acacia savanna woodland: An analyses of seasonal patterns and responses to rainfall events. *Agricultural and Forest Meteorology*, 182–183, 225–238. <https://doi.org/10.1016/j.agrformet.2013.04.020>
- Eamus, D., Hutley, L. B. L. B., & O'Grady, A. P. P. A. P. (2001). Daily and seasonal patterns of carbon and water fluxes above a north Australian savanna. *Tree Physiology*, 21(12–13), 977–988. <https://doi.org/10.1093/treephys/21.12-13.977>
- Edwards, A., Archer, R., De Bruyn, P., Evans, J., Lewis, B., Vigilante, T., Whyte, S., & Russell-Smith, J. (2021). Transforming fire management in northern Australia through successful implementation of savanna burning emissions reductions projects. *Journal of Environmental Management*, 290, 112568. <https://doi.org/10.1016/J.JENVMAN.2021.112568>
- Fasullo, J. T., Boening, C., Landerer, F. W., & Nerem, R. S. (2013). Australia's unique influence on global sea level in 2010–2011. *Geophysical Research Letters*, 40(16), 4368–4373. <https://doi.org/10.1002/GRL.50834>
- Feng, X., Ackerly, D. D., Dawson, T. E., Manzoni, S., McLaughlin, B., Skelton, R. P., Vico, G., Weitz, A. P., & Thompson, S. E. (2019). Beyond isohydricity: The role of environmental variability in determining plant drought responses. *Plant, Cell & Environment*, 42(4), 1104–1111. <https://doi.org/10.1111/PCE.13486>
- Feng, X., Ackerly, D. D., Dawson, T. E., Manzoni, S., Skelton, R. P., Vico, G., & Thompson, S. E. (2018). The ecohydrological context of drought and classification of plant responses. *Ecology Letters*, 21(11), 1723–1736. <https://doi.org/10.1111/ELE.13139>
- Finnigan, J., Clement, R., Malhi, Y., Leuning, R., & Cleugh, H. (2003). A re-evaluation of long-term flux measurement techniques Part I: averaging and coordinate rotation. *Boundary – Layer Meteorology*, 107, 1–48. <https://doi.org/10.1023/A:1021554900225>
- Fisher, A., Armston, J., Goodwin, N., & Scarth, P. (2020). Modelling canopy gap probability, foliage projective cover and crown projective cover from airborne lidar metrics in Australian forests and woodlands. *Remote Sensing of Environment*, 237, <https://doi.org/10.1016/j.rse.2019.111520>
- Fox, M. D. (1999). Present environmental influences on the Australian flora. In A. E. Orchard, & H. S. Thompson (Eds.), *Flora of Australia Volume 1—Introduction* (2nd ed., p. 702). CSIRO Publishing. <https://www.awe.gov.au/science-research/abrs/publications/flora-of-australia/vol01-2>
- Freund, M., Henley, B. J., Karoly, D. J., Allen, K. J., & Baker, P. J. (2017). Multi-century cool- and warm-season rainfall reconstructions for Australia's major climatic regions. *Climate of the past*, 13(12), 1751–1770. <https://doi.org/10.5194/cp-13-1751-2017>
- Fritz, C., Campbell, D. I., & Schipper, L. A. (2008). Oscillating peat surface levels in a restiad peatland, New Zealand—magnitude and spatiotemporal variability. *Hydrological Processes*, 22(17), 3264–3274. <https://doi.org/10.1002/HYP.6912>
- Frost, A. J., Ramchurn, A., Hafeez, M., Zhao, F., Haverd, V., Beringer, J., & Briggs, P. (2015). Evaluation of AWRA-L: The Australian water resource assessment model. Proceedings – 21st International Congress on Modelling and Simulation. MODSIM 2015, 2047–2053.
- Fu, Z., Gerken, T., Bromley, G., Araújo, A., Bonal, D., Burban, B., Ficklin, D., Fuentes, J. D., Goulden, M., Hirano, T., Kosugi, Y., Liddell, M., Nicolini, G., Niu, S., Rouspard, O., Stefani, P., Mi, C., Tofte, Z., Xiao, J., ... Stoy, P. C. (2018). The surface-atmosphere exchange of carbon dioxide in tropical rainforests: Sensitivity to environmental drivers and flux measurement methodology. *Agricultural and Forest Meteorology*, 263, 292–307. <https://doi.org/10.1016/J.AGRFO.2018.09.001>
- Fu, Z., Stoy, P. C., Poulter, B., Gerken, T., Zhang, Z., Wakbulcho, G., & Niu, S. (2019). Maximum carbon uptake rate dominates the interannual variability of global net ecosystem exchange. *Global Change Biology*, 25(10), 3381–3394. <https://doi.org/https://doi.org/10.1111/gcb.14731>
- Gamon, J. A., Rahman, A. F., Dungan, J. L., Schildhauer, M., & Huemmrich, K. F. (2006). Spectral network (SpecNet)—What is it and why do we need it? *Remote Sensing of Environment*, 103(3), 227–235. <https://doi.org/10.1016/j.rse.2006.04.003>
- Garbulsky, M. F., Peñuelas, J., Papale, D., Arđó, J., Goulden, M. L., Kiely, G., Richardson, A. D., Rotenberg, E., Veenendaal, E. M., & Filella, I. (2010). Patterns and controls of the variability of radiation use efficiency and primary productivity across terrestrial ecosystems. *Global Ecology and Biogeography*, 19(2), 253–267. <https://doi.org/10.1111/j.1466-8238.2009.00504.x>
- Giltrap, D. L., Kirschbaum, M. U. F., Laubach, J., & Hunt, J. E. (2020). The effects of irrigation on carbon balance in an irrigated grazed pasture system in New Zealand. *Agricultural Systems*, 182, 102851. <https://doi.org/10.1016/j.agsy.2020.102851>
- Glenn, E. P., Doody, T. M., Guerschman, J. P., Huete, A. R., King, E. A., McVicar, T. R., Van Dijk, A. I. J. M., Van Niel, T. G., Yebra, M., & Zhang, Y. (2011). Actual evapotranspiration estimation by ground and remote sensing methods: the Australian experience. *Hydrological Processes*, 25(26), 4103–4116. <https://doi.org/10.1002/hyp.8391>
- Goodrich, J. P., Campbell, D. I., & Schipper, L. A. (2017). Southern Hemisphere bog persists as a strong carbon sink during droughts. *Biogeosciences*, 14(20), 4563–4576. <https://doi.org/10.5194/bg-14-4563-2017>
- Goodrich, J. P., Wall, A. M., Campbell, D. I., Fletcher, D., Wecking, A. R., & Schipper, L. A. (2021). Improved gap filling approach and uncertainty estimation for eddy covariance N₂O fluxes. *Agricultural and Forest Meteorology*, 297, 108280. <https://doi.org/10.1016/j.agrfor.2020.108280>
- Görgen, K., Lynch, A. H., Marshall, A. G., & Beringer, J. (2006). Impact of abrupt land cover changes by savanna fire on northern Australian climate. *Journal of Geophysical Research*, 111(D19), 19106. <https://doi.org/10.1029/2005jd006860>
- Griebel, A., Bennett, L. T., & Arndt, S. K. (2017). Evergreen and ever growing – Stem and canopy growth dynamics of a temperate eucalypt forest. *Forest Ecology and Management*, 389, 417–426. <https://doi.org/10.1016/j.foreco.2016.12.017>
- Griebel, A., Bennett, L. T., Metzen, D., Cleverly, J., Burba, G., & Arndt, S. K. (2016). Effects of inhomogeneities within the flux footprint on the interpretation of seasonal, annual, and interannual ecosystem carbon exchange. *Agricultural and Forest Meteorology*, 221, 50–60. <https://doi.org/10.1016/j.agrformet.2016.02.002>

- Griebel, A., Bennett, L. T., Metzen, D., Pendall, E., Lane, P. N. J., & Arndt, S. K. (2020). Trading water for carbon: Maintaining photosynthesis at the cost of increased water loss during high temperatures in a temperate forest. *Journal of Geophysical Research: Biogeosciences*, 125(1), 1–15. <https://doi.org/10.1029/2019jg005239>
- Griebel, A., Metzen, D., Boer, M. M., Barton, C. V. M., Renchon, A. A., Andrews, H. M., & Pendall, E. (2020). Using a paired tower approach and remote sensing to assess carbon sequestration and energy distribution in a heterogeneous sclerophyll forest. *Science of the Total Environment*, 699, 133918. <https://doi.org/10.1016/j.scitotenv.2019.133918>
- Griebel, A., Metzen, D., Pendall, E., Burba, G., & Metzger, S. (2020). Generating spatially robust carbon budgets from flux tower observations. *Geophysical Research Letters*, 47(3), 1–10. <https://doi.org/10.1029/2019GL085942>
- Grossiord, C., Buckley, T. N., Cernusak, L. A., Novick, K. A., Poulter, B., Siegwolf, R. T. W., Sperry, J. S., & McDowell, N. G. (2020). Plant responses to rising vapor pressure deficit. *New Phytologist*, 226(6), 1550–1566. <https://doi.org/10.1111/NPH.16485>
- Guerschman, J. P., Van Dijk, A. A. I. J., Mattersdorf, G., Beringer, J., Hutley, L. B., Leuning, R., Pipunic, R. C., Sherman, B. S., & Pablo, J. (2009). Scaling of potential evapotranspiration with MODIS data reproduces flux observations and catchment water balance observations across Australia. *Journal of Hydrology*, 369(1–2), 107–119. <https://doi.org/10.1016/j.jhydrol.2009.02.013>
- Hahm, W. J., Dralle, D. N., Rempe, D. M., Bryk, A. B., Thompson, S. E., Dawson, T. E., & Dietrich, W. E. (2019). Low subsurface water storage capacity relative to annual rainfall decouples Mediterranean plant productivity and water use from rainfall variability. *Geophysical Research Letters*, 46(12), 6544–6553. <https://doi.org/10.1029/2019GL083294>
- Haughton, N., Abramowitz, G., Pitman, A. J., Or, D., Best, M. J., Johnson, H. R., Balsamo, G., Boone, A., Cuntz, M., Decharme, B., Dirmeyer, P. A., Dong, J., Ek, M., Guo, Z., Haverd, V., van den Hurk, B. J. J., Nearing, G. S., Pak, B., Santanello, J. A., ... Vuichard, N. (2016). The plumbing of land surface models: is poor performance a result of methodology or data quality? *Journal of Hydrometeorology*, 17(6), 1705–1723. <https://doi.org/10.1175/JHM-D-15-0171.1>
- Haverd, V., Ahlström, A., Smith, B., & Canadell, J. G. (2016). Carbon cycle responses of semi-arid ecosystems to positive asymmetry in rainfall. *Global Change Biology*, 23(2), 793–800. <https://doi.org/10.1111/gcb.13412>
- Haverd, V., Raupach, M. R., Briggs, P. R., Canadell, J. G., Davis, S. J., Law, R. M., Meyer, C. P., Peters, G. P., Pickett-Heaps, C., & Sherman, B. (2013). The Australian terrestrial carbon budget. *Biogeosciences*, 10(2), 851–869. <https://doi.org/10.5194/bg-10-851-2013>
- Haverd, V., Raupach, M. R., Briggs, P. R., Canadell, J. G., Isaac, P., Pickett-Heaps, C., Roxburgh, S. H., van Gorsel, E., Viscarra Rossel, R. A., & Wang, Z. (2013). Multiple observation types reduce uncertainty in Australia's terrestrial carbon and water cycles. *Biogeosciences*, 10(3), 2011–2040. <https://doi.org/10.5194/bg-10-2011-2013>
- Haverd, V., Smith, B., Raupach, M. R., Briggs, P. R., Nieradzki, L. P., Beringer, J., Hutley, L. B., Trudinger, C. M. C. M. M., & Cleverly, J. R. (2016). Coupling carbon allocation with leaf and root phenology predicts tree-grass partitioning along a savanna rainfall gradient. *Biogeosciences*, 13(3), 761–779. <https://doi.org/10.5194/bg-13-761-2016>
- Haverd, V., Smith, B., Trudinger, C., & van Dijk, A. I. J. M. (2016). Process contributions of Australian ecosystems to interannual variations in the carbon cycle. *Environmental Research Letters*, 11(5), 054013. <https://doi.org/10.1088/1748-9326/11/5/054013>
- He, L., Chen, J. M., Liu, J., Zheng, T., Wang, R., Joiner, J., Chou, S., Chen, B., Liu, Y., Liu, R., & Rogers, C. (2019). Diverse photosynthetic capacity of global ecosystems mapped by satellite chlorophyll fluorescence measurements. *Remote Sensing of Environment*, 232, 111344. <https://doi.org/10.1016/J.RSE.2019.111344>
- Head, L., Adams, M., McGregor, H. V., & Toole, S. (2014). Climate change and Australia. *Wires Climate Change*, 5(2), 175–197. <https://doi.org/10.1002/wcc.255>
- Hill, M. J., Held, A. A., Leuning, R., Coops, N. C., Hughes, D., & Cleugh, H. A. (2006). MODIS spectral signals at a flux tower site: Relationships with high-resolution data, and CO₂ flux and light use efficiency measurements. *Remote Sensing of Environment*, 103(3), 351–368. <https://doi.org/10.1016/J.RSE.2005.06.015>
- Hill, T., Chocholek, M., & Clement, R. (2016). The case for increasing the statistical power of eddy covariance ecosystem studies: Why, where and how? *Global Change Biology*, 23(6), 1–12. <https://doi.org/10.1111/gcb.13547>
- Hinko-Najera, N., Isaac, P., Beringer, J., van Gorsel, E., Ewenz, C., McHugh, I., Exbrayat, J.-F., Livesley, S. J., & Arndt, S. K. (2017). Net ecosystem carbon exchange of a dry temperate eucalypt forest. *Biogeosciences*, 14(16), 3781–3800. <https://doi.org/10.5194/bg-14-3781-2017>
- Hobeichi, S., Abramowitz, G., & Evans, J. P. (2021). Robust historical evapotranspiration trends across climate regimes. *Hydrology and Earth System Sciences*, 25(7), 3855–3874. <https://doi.org/10.5194/HESS-25-3855-2021>
- Holling, C. S. (1973). Resilience and stability of ecological systems. *Annual Review of Ecology and Systematics*, 4, 1–23. <https://doi.org/10.1146/ANNUREV.ES.04.110173.000245>
- Hollinger, D. Y., Kelliher, F. M., Schulze, E.-D., & Kostner, B. M. M. (1994). Coupling of tree transpiration to atmospheric turbulence. *Nature*, 371, 60–62. <https://doi.org/10.1038/371060a0>
- Hunt, E. R., Kelly, R. D., Smith, W. K., Fahnestock, J. T., Welker, J. M., Reiners, W. A., & Hunt, E. R. (2004). Estimation of carbon sequestration by combining remote sensing and net ecosystem exchange data for northern mixed-grass Prairie and Sagebrush-steppe ecosystems. *Environmental Management*, 33, 432–441. <https://doi.org/10.1007/s00267-003-9151-0>
- Hunt, J. E., Laubach, J., Barthel, M., Fraser, A., & Phillips, R. L. (2016). Carbon budgets for an irrigated intensively-grazed dairy pasture and an unirrigated winter-grazed pasture. *Biogeosciences*, 13, 2927–2944. <https://doi.org/10.5194/bg-13-1837-2016>
- Hutley, L. B., & Beringer, J. (2011). Disturbance and climatic drivers of carbon dynamics of a North Australian tropical savanna. In M. J. Hill, & N. P. Hanan (Eds.), *Ecosystem function in savannas: Measurement and modeling at landscape to global scales* (pp. 57–75). CRC Press. <https://doi.org/10.1201/b10275-6>
- Hutley, L. B., Beringer, J., Isaac, P. R., Hacker, J. M., & Cernusak, L. A. (2011). A sub-continental scale living laboratory: Spatial patterns of savanna vegetation over a rainfall gradient in northern Australia. *Agricultural and Forest Meteorology*, 151(11), 1417–1428. <https://doi.org/10.1016/J.AGRFORMET.2011.03.002>
- Hutley, L. B., Evans, B. J., Beringer, J., Cook, G. D., Maier, S. W. M., & Razon, E. (2013). Impacts of an extreme cyclone event on landscape-scale savanna fire, productivity and greenhouse gas emissions. *Environmental Research Letters*, 8(4), 045023. <https://doi.org/10.1088/1748-9326/8/4/045023>
- IPCC. (2021). Climate change 2021: The physical science basis. In P. Masson-Delmotte, V. A. Zhai, S. L. Pirani, C. Connors, S. Péan, N. Berger, Y. Caud, L. Chen, M. I. Goldfarb, M. Gomis, K. Huang, E. Leitzell, J. B. R. Lonnoy, T. K. Matthews, T. Maycock, O. Waterfield, R. Y. Yelekçi, & B. Zhou (Eds.), *Contribution of Working Group I to the Sixth Assessment Report of the Intergovernmental Panel on Climate Change*. Cambridge University Press.
- Isaac, P., Cleverly, J., McHugh, I., Van Gorsel, E., Ewenz, C., & Beringer, J. (2017). OzFlux data: Network integration from collection to curation. *Biogeosciences*, 14(12), 2903–2928. <https://doi.org/10.5194/bg-14-2903-2017>
- Jung, M., Reichstein, M., Schwalm, C. R., Huntingford, C., Sitch, S., Ahlström, A., Arneth, A., Camps-Valls, G., Ciais, P., Friedlingstein, P., Gans, F., Ichii, K., Jain, A. K., Kato, E., Papale, D., Poulter, B.,

- Raduly, B., Rördenbeck, C., Tramontana, G., ... Zeng, N. (2017). Compensatory water effects link yearly global land CO₂ sink changes to temperature. *Nature*, 541, 516. <https://doi.org/10.1038/nature20780>
- Jung, M., Schwalm, C., Migliavacca, M., Walther, S., Camps-Valls, G., Koirala, S., Anthoni, P., Besnard, S., Bodesheim, P., Carvalhais, N., Chevallier, F., Gans, F., Goll, D. S., Haverd, V., Köhler, P., Ichii, K., Jain, A. K., Liu, J., Lombardozi, D., ... Reichstein, M. (2020). Scaling carbon fluxes from eddy covariance sites to globe: synthesis and evaluation of the FLUXCOM approach. *Biogeosciences*, 17(5), 1343–1365. <https://doi.org/10.5194/bg-17-1343-2020>
- Kanniah, K. D., Beringer, J., Hutley, L. B., Tapper, N. J., & Zhu, X. (2009). Evaluation of Collections 4 and 5 of the MODIS Gross Primary Productivity product and algorithm improvement at a tropical savanna site in northern Australia. *Remote Sensing of Environment*, 113(9), 1808–1822. <https://doi.org/10.1016/j.rse.2009.04.013>
- Karan, M., Liddell, M., Prober, S. M., Arndt, S., Beringer, J., Boer, M., Cleverly, J., Eamus, D., Grace, P., Van Gorsel, E., Sebastian, A., Wardlaw, T., Hero, J.-M., Hutley, L., Macfarlane, C., Metcalfe, D., Meyer, W., Pendall, E., Sebastian, A., & Wardlaw, T. (2016). The Australian SuperSite Network: A continental, long-term terrestrial ecosystem observatory. *Science of the Total Environment*, 568, 1263–1274. <https://doi.org/10.1016/j.scitotenv.2016.05.170>
- Keith, H., van Gorsel, E., Jacobsen, K. L., Cleugh, H. A. (2012). Dynamics of carbon exchange in a Eucalyptus forest in response to interacting disturbance factors. *Agricultural & Forest Meteorology*, 153, 14. <https://doi.org/10.1016/j.agrformet.2011.07.019>
- Kiem, A. S., Johnson, F., Westra, S., van Dijk, A., Evans, J. P., O'Donnell, A., Rouillard, A., Barr, C., Tyler, J., Thyer, M., Jakob, D., Woldeemeskel, F., Sivakumar, B., Mehrotra, R., Perkins-Kirkpatrick, S. E., White, C. J., Alexander, L. V., Argüeso, D., Boschat, G., ... Purich, A. (2016). Natural hazards in Australia: Droughts. *Climatic Change*, 139(1), 37–54. <https://doi.org/10.1007/s10584-016-1798-7>
- Kilinc, M., Beringer, J., Hutley, L. B., Haverd, V., & Tapper, N. (2012). An analysis of the surface energy budget above the world's tallest angiosperm forest. *Agricultural and Forest Meteorology*, 166–167, 23–31. <https://doi.org/10.1016/j.agrformet.2012.05.014>
- Kim, D.-G., & Kirschbaum, M. U. F. (2015). The effect of land-use change on the net exchange rates of greenhouse gases: A compilation of estimates. *Agriculture, Ecosystems & Environment*, 208, 114–126. <https://doi.org/10.1016/j.agee.2015.04.026>
- King, A. D., Pitman, A. J., Henley, B. J., Ukkola, A. M., & Brown, J. R. (2020). The role of climate variability in Australian drought. *Nature Climate Change*, 10(3), 177–179. <https://doi.org/10.1038/s41558-020-0718-z>
- Kirschbaum, M. U. F., Keith, H., Leuning, R., Cleugh, H. A., Jacobsen, K. L., van Gorsel, E., & Raison, R. J. (2007). Modelling net ecosystem carbon and water exchange of a temperate Eucalyptus delegatensis forest using multiple constraints. *Agricultural and Forest Meteorology*, 145(1–2), 48–68. <https://doi.org/10.1016/j.agrformet.2007.04.002>
- Kirschbaum, M. U. F., & McMillan, A. M. S. (2018). Warming and Elevated CO₂ Have Opposing Influences on Transpiration. Which is more Important? *Current Forestry Reports*, 4(2), 51–71. <https://doi.org/10.1007/s40725-018-0073-8>
- Kirschbaum, M. U. F., Rutledge, S., Kuijper, I. A., Mudge, P. L., Puche, N., Wall, A. M., Roach, C. G., Schipper, L. A., & Campbell, D. I. (2015). Modelling carbon and water exchange of a grazed pasture in New Zealand constrained by eddy covariance measurements. *Science of the Total Environment*, 512–513, 273–286. <https://doi.org/10.1016/J.SCITOTENV.2015.01.045>
- Kirschbaum, M. U. F., Schipper, L. A., Mudge, P. L., Rutledge, S., Puche, N. J. B., & Campbell, D. I. (2017). The trade-offs between milk production and soil organic carbon storage in dairy systems under different management and environmental factors. *Science of the Total Environment*, 577, 61–72. <https://doi.org/10.1016/j.scitotenv.2016.10.055>
- Kondo, M., Saeki, T., Takagi, H., Ichii, K., & Ishijima, K. (2016). The effect of GOSAT observations on estimates of net CO₂ flux in semi-arid regions of the southern hemisphere. *SOLA*, 12, 181–186. <https://doi.org/10.2151/SOLA.2016-037>
- la Torre, A. M., Blyth, E. M., & Robinson, E. L. (2019). Evaluation of dry-down processes in global land surface and hydrological models using flux tower evapotranspiration. *Water*, 11, 356. <https://doi.org/10.3390/W11020356>
- Laubach, J., & Hunt, J. E. (2018). Greenhouse-gas budgets for irrigated dairy pasture and a winter-forage kale crop. *Agricultural and Forest Meteorology*, 258, 117–134. <https://doi.org/10.1016/j.agrformet.2017.04.013>
- Laubach, J., Hunt, J. E., Graham, S. L., Buxton, R. P., Rogers, G. N. D., Mudge, P. L., Carrick, S., & Whitehead, D. (2019). Irrigation increases forage production of newly established lucerne but enhances net ecosystem carbon losses. *Science of the Total Environment*, 689, 921–936. <https://doi.org/10.1016/J.SCITOTENV.2019.06.407>
- Laurance, W. F., Dell, B., Turton, S. M., Lawes, M. J., Hutley, L. B., McCallum, H., Dale, P., Bird, M., Hardy, G., Prideaux, G., Gawne, B., McMahon, C. R., Yu, R., Hero, J.-M., Schwarzkopf, L., Krockenberger, A., Douglas, M., Silvester, E., Mahony, M., ... Cocklin, C. (2011). The 10 Australian ecosystems most vulnerable to tipping points. *Biological Conservation*, 144(5), 1472–1480. <https://doi.org/10.1016/j.biocon.2011.01.016>
- Lehmann, C. E. R., Anderson, T. M., Sankaran, M., Higgins, S. I., Archibald, S., Hoffmann, W. A., Hanan, N. P., Williams, R. J., Fensham, R. J., Felfili, J., Hutley, L. B., Ratnam, J., San Jose, J., Montes, R., Franklin, D., Russell-Smith, J., Ryan, C. M., Durigan, G., Hiernaux, P., ... Bond, W. J. (2014). Savanna vegetation-fire-climate relationships differ among continents. *Science (New York, N.Y.)*, 343(6170), 548–552. <https://doi.org/10.1126/science.1247355>
- Leuning, R., Cleugh, H. A., Zegelin, S. J., & Hughes, D. (2005). Carbon and water fluxes over a temperate Eucalyptus forest and a tropical wet/dry savanna in Australia: measurements and comparison with MODIS remote sensing estimates. *Agricultural and Forest Meteorology*, 129(3–4), 151–173. <https://doi.org/10.1016/j.agrformet.2004.12.004>
- Leuning, R., Denmead, O. T., Lang, A. R. G., & Ohtaki, E. (1982). Effects of heat and water vapour transport on eddy covariance measurement of CO₂ fluxes. *Boundary-Layer Meteorology*, 23, 209–222.
- Leuning, R., Hughes, D., Daniel, P., Coops, N. C., & Newnham, G. (2006). A multi-angle spectrometer for automatic measurement of plant canopy reflectance spectra. *Remote Sensing of Environment*, 103(3), 236–245. <https://doi.org/10.1016/j.rse.2005.06.016>
- Leuning, R., Raupach, M. R., Coppin, P. A., Cleugh, H. A., Isaac, P., Denmead, O. T., Dunin, F. X., Zegelin, S., & Hacker, J. (2004). Spatial and temporal variations in fluxes of energy, water vapour and carbon dioxide during OASIS 1994 and 1995. *Boundary-Layer Meteorology*, 110(1), 3–38. <https://doi.org/10.1023/A:1026028217081>
- Li, L., Wang, Y.-P., Beringer, J., Shi, H., Cleverly, J., Cheng, L., Eamus, D., Huete, A., Hutley, L., Lu, X., Piao, S., Zhang, L., Zhang, Y., Yu, Q., Piao, S., Zhang, L., Zhang, Y., Yu, Q., Piao, S., ... Yu, Q. (2017). Responses of LAI to rainfall explain contrasting sensitivities to carbon uptake between forest and non-forest ecosystems in Australia. *Scientific Reports*, 7(1), 11720. <https://doi.org/10.1038/s41598-017-11063-w>
- Li, L., Wang, Y.-P., Yu, Q., Pak, B., Eamus, D., Yan, J., van Gorsel, E., Baker, I. T. (2012). Improving the responses of the Australian community land surface model (CABLE) to seasonal drought. *Journal of Geophysical Research*, 117, G04002. <https://doi.org/10.1029/2012JG002038>
- Liáng, L. L., Kirschbaum, M. U. F., Giltrap, D. L., Hunt, J. E., & Laubach, J. (2021). Could patterns of animal behaviour cause the observed differences in soil carbon between adjacent irrigated and unirrigated pastures? *Science of the Total Environment*, 772, 145033. <https://doi.org/10.1016/J.SCITOTENV.2021.145033>

- Long, S. P. (2020). Twenty-five years of GCB : Putting the biology into global change. *Global Change Biology*, 26(1), 1–2. <https://doi.org/10.1111/gcb.14921>
- Lynch, A. H., Abramson, D., Görden, K., Beringer, J., & Uotila, P. (2007). Influence of savanna fire on Australian monsoon season precipitation and circulation as simulated using a distributed computing environment. *Geophysical Research Letters*, 34(20), L20801. <https://doi.org/10.1029/2007gl030879>
- Ma, S., Duggan, J. M., Eichelberger, B. A., McNally, B. W., Foster, J. R., Pepi, E., Conte, M. N., Daily, G. C., & Ziv, G. (2016). Valuation of ecosystem services to inform management of multiple-use landscapes. *Ecosystem Services*, 19, 6–18. <https://doi.org/10.1016/j.ecoser.2016.03.005>
- Ma, S., Lardy, R., Graux, A.-I., Ben Touhami, H., Klumpp, K., Martin, R., & Bellocchi, G. (2015). Regional-scale analysis of carbon and water cycles on managed grassland systems. *Environmental Modelling & Software*, 72, 356–371. <https://doi.org/10.1016/j.envsoft.2015.03.007>
- Ma, X., Huete, A., Cleverly, J., Eamus, D., Chevallier, F., Joiner, J., Poulter, B., Zhang, Y., Guanter, L., Meyer, W., Xie, Z., Ponce-Campos, G. E., Keeling, C. D., Chin, J. F. S., Whorf, T. P., Quéré, C. L., Raupach, M. R., Pan, Y., Friedlingstein, P., ... Donohue, R. J. (2016). Drought rapidly diminishes the large net CO₂ uptake in 2011 over semi-arid Australia. *Scientific Reports*, 6(1), 1–9. <https://doi.org/10.1038/srep37747>
- Ma, X., Huete, A., Yu, Q., Coupe, N. R., Davies, K., Broich, M., Ratana, P., Beringer, J., Hutley, L. B., Cleverly, J., Boulain, N., & Eamus, D. (2013). Spatial patterns and temporal dynamics in savanna vegetation phenology across the North Australian Tropical Transect. *Remote Sensing of Environment*, 139, 97–115. <https://doi.org/10.1016/j.rse.2013.07.030>
- Magney, T. S., Bowling, D. R., Logan, B. A., Grossmann, K., Stutz, J., Blanken, P. D., Burns, S. P., Cheng, R., Garcia, M. A., Köhler, P., Lopez, S., Parazoo, N. C., Raczka, B., Schimel, D., & Frankenberg, C. (2019). Mechanistic evidence for tracking the seasonality of photosynthesis with solar-induced fluorescence. *Proceedings of the National Academy of Sciences of the United States of America*, 116(24), 11640–11645. <https://doi.org/10.1073/pnas.1900278116>
- McCormick, E. L., Dralle, D. N., Hahm, W. J., Tune, A. K., Schmidt, L. M., Chadwick, K. D., & Rempe, D. M. (2021). Widespread woody plant use of water stored in bedrock. *Nature* 597(7875), 225–229. <https://doi.org/10.1038/s41586-021-03761-3>
- McLaughlin, B. C., Ackerly, D. D., Klos, P. Z., Natali, J., Dawson, T. E., & Thompson, S. E. (2017). Hydrologic refugia, plants, and climate change. *Global Change Biology*, 23(8), 2941–2961. <https://doi.org/10.1111/GCB.13629>
- Medlyn, B. E., De Kauwe, M. G., Lin, Y.-S., Knauer, J., Duursma, R. A., Williams, C. A., Arneeth, A., Clement, R., Isaac, P., Limousin, J.-M., Linderson, M.-L., Meir, P., Martin-StPaul, N., & Wingate, L. (2017). How do leaf and ecosystem measures of water-use efficiency compare? *New Phytologist*, 216(3), 758–770. <https://doi.org/10.1111/NPH.14626>
- Meyer, W. S., Kondrovà, E., & Koerber, G. R. (2015). Evaporation of perennial semi-arid woodland in southeastern Australia is adapted for irregular but common dry periods. *Hydrological Processes*, 29(17), 3714–3726. <https://doi.org/10.1002/hyp.10467>
- Ministry for the Environment. (2021). New Zealand's Greenhouse Gas Inventory 1990-2019, report ME 1559. <https://environment.govt.nz/publications/new-zealands-greenhouse-gas-inventory-1990-2019/>
- Mizoguchi, Y., Miyata, A., Ohtani, Y., Hirata, R., & Yuta, S. (2009). A review of tower flux observation sites in Asia. *Journal of Forest Research*, 14(1), 1–9. <https://doi.org/10.1007/s10310-008-0101-9>
- Moore, C. E., Beringer, J., Donohue, R. J., Evans, B., Exbrayat, J. F., Hutley, L. B., & Tapper, N. J. (2018). Seasonal, interannual and decadal drivers of tree and grass productivity in an Australian tropical savanna. *Global Change Biology*, 24(6), 2530–2544. <https://doi.org/10.1111/gcb.14072>
- Moore, C. E., Beringer, J., Evans, B., Hutley, L. B., McHugh, I., & Tapper, N. J. (2016). The contribution of trees and grasses to productivity of an Australian tropical savanna. *Biogeosciences*, 13(8), 2387–2403. <https://doi.org/10.5194/bg-13-2387-2016>
- Moore, C. E., Beringer, J., Evans, B., Hutley, L. B., & Tapper, N. J. (2017). Tree-grass phenology information improves light use efficiency modelling of gross primary productivity for an Australian tropical savanna. *Biogeosciences*, 14(1), 1–38. <https://doi.org/10.5194/bg-14-111-2017>
- Moore, C. E., Brown, T., Keenan, T. F., Duursma, R. A., van Dijk, A. I. J. M., Beringer, J., Culvenor, D., Evans, B., Huete, A., Hutley, L. B., Maier, S., Restrepo-Coupe, N., Sonnentag, O., Specht, A., Taylor, J. R., van Gorsel, E., & Liddell, M. J. (2016). Reviews and syntheses: Australian vegetation phenology: New insights from satellite remote sensing and digital repeat photography. *Biogeosciences*, 13(17), 5085–5102. <https://doi.org/10.5194/bg-13-5085-2016>
- Mu, M., De Kauwe, M. G., Ukkola, A. M., Pitman, A. J., Gimeno, T. E., Medlyn, B. E., Or, D., Yang, J., & Ellsworth, D. S. (2021b). Evaluating a land surface model at a water-limited site: Implications for land surface contributions to droughts and heatwaves. *Hydrology and Earth System Sciences*, 25(1), 447–471. <https://doi.org/10.5194/HESS-25-447-2021>
- Mu, M., De Kauwe, M. G., Ukkola, A. M., Pitman, A. J., Guo, W., Hobeichi, S., & Briggs, P. R. (2021a). Exploring how groundwater buffers the influence of heatwaves on vegetation function during multi-year droughts. *Earth System Dynamics*, 12(3), 919–938. <https://doi.org/10.5194/ESD-12-919-2021>
- Mudge, P. L., Kelliher, F. M., Knight, T. L., O'Connell, D., Fraser, S., & Schipper, L. A. (2017). Irrigating grazed pasture decreases soil carbon and nitrogen stocks. *Global Change Biology*, 23(2), 945–954. <https://doi.org/10.1111/GCB.13448>
- Mudge, P. L., Wallace, D. F., Rutledge, S., Campbell, D. I., Schipper, L. A., & Hosking, C. L. (2011). Carbon balance of an intensively grazed temperate pasture in two climatically contrasting years. *Agriculture, Ecosystems & Environment*, 144(1), 271–280. <https://doi.org/10.1016/j.agee.2011.09.003>
- Nieveen, J. P., Campbell, D. I., Schipper, L. A., & Blair, I. J. (2005). Carbon exchange of grazed pasture on a drained peat soil. *Global Change Biology*, 11(4), 607–618. <https://doi.org/10.1111/J.1365-2486.2005.00929.X>
- Novick, K. A., Biederman, J. A., Desai, A. R., Litvak, M. E., Moore, D. J. P., Scott, R. L., & Torn, M. S. (2018). The AmeriFlux network: A coalition of the willing. *Agricultural and Forest Meteorology*, 249, 444–456. <https://doi.org/10.1016/J.AGRFORMET.2017.10.009>
- O'Grady, A. P., Chen, X., Eamus, D., Hutley, L. B., & Grady, A. P. O. (2000). Composition, leaf area index and standing biomass of eucalypt open forests near Darwin in the Northern Territory, Australia. *Australian Journal of Botany*, 48(5), 629–638. <https://doi.org/10.1071/BT99022>
- Owen, K. E., Tenhunen, J., Reichstein, M., Wang, Q., Falge, E., Geyer, R., Xiao, X., Stoy, P., Ammann, C., Arain, A., Aubinet, M., Aurela, M., Bernhofer, C., Chojnicki, B. H., Granier, A., Gruenwald, T., Hadley, J., Heinesch, B., Hollinger, D., ... Vogel, C. (2007). Linking flux network measurements to continental scale simulations: ecosystem carbon dioxide exchange capacity under non-water-stressed conditions. *Global Change Biology*, 13(4), 734–760. <https://doi.org/10.1111/j.1365-2486.2007.01326.x>
- Owens, J., Carter, J., Fraser, G., Cleverly, J., Hutley, L., & Barnetson, J. (2019). Improving evapotranspiration estimation in pasture and native vegetation models using flux tower data, remote sensing and global optimisation. 23rd International Congress on Modelling and Simulation.
- Park, S.-B., Knohl, A., Lucas-Moffat, A. M., Migliavacca, M., Gerbig, C., Vesala, T., Peltola, O., Mammarella, I., Kolle, O., Lavrič, J. V.,

- Prokushkin, A., & Heimann, M. (2018). Strong radiative effect induced by clouds and smoke on forest net ecosystem productivity in central Siberia. *Agricultural and Forest Meteorology*, 250–251, 376–387. <https://doi.org/10.1016/J.AGRFORMET.2017.09.009>
- Perkins-Kirkpatrick, S. E., White, C. J., Alexander, L. V., Argüeso, D., Bosch, G., Cowan, T., Evans, J. P., Ekström, M., Oliver, E. C. J., Phatak, A., & Purich, A. (2016). Natural hazards in Australia: heat waves. *Climatic Change*, 139, 101–114. <https://doi.org/https://doi.org/10.1007/S10584-016-1650-0>
- Peters, J. M. R., López, R., Nolf, M., Hutley, L. B., Wardlaw, T., Cernusak, L. A., & Choat, B. (2021). Living on the edge: A continental-scale assessment of forest vulnerability to drought. *Global Change Biology*, 27(15), 3620–3641. <https://doi.org/10.1111/GCB.15641>
- Pham, H. T., Kim, S., Marshall, L., & Johnson, F. (2019). Using 3D robust smoothing to fill land surface temperature gaps at the continental scale. *International Journal of Applied Earth Observation and Geoinformation*, 82, 101879. <https://doi.org/10.1016/J.JAG.2019.05.012>
- Piao, S., Wang, X., Wang, K., Li, X., Bastos, A., Canadell, J. G., Ciais, P., Friedlingstein, P., & Sitch, S. (2020). Interannual variation of terrestrial carbon cycle: Issues and perspectives. *Global Change Biology*, 26(1), 300–318. <https://doi.org/10.1111/GCB.14884>
- Pisek, J., Arndt, S. K., Erb, A., Pendall, E., Schaaf, C., Wardlaw, T. J., Woodgate, W., & Knyazikhin, Y. (2021). Exploring the potential of DSCOVR EPIC data to retrieve clumping index in Australian terrestrial ecosystem research network observing sites. *Frontiers in Remote Sensing*, 2. <https://doi.org/10.3389/FRSEN.2021.652436>
- Ponce Campos, G. E., Moran, M. S., Huete, A., Zhang, Y., Bresloff, C., Huxman, T. E., Eamus, D., Bosch, D. D., Buda, A. R., Gunter, S. A., Heartsill-Scalley, T., Kitchen, S. G., Mcclaran, M. P., McNab, W. H., Montoya, D. S., Morgan, J. A., Peters, D. P. C. C., Sadler, E. J., Seyfried, M. S., ... Starks, P. J. (2013). Ecosystem resilience despite large-scale altered hydroclimatic conditions. *Nature*, 494(7437), 349–352. <https://doi.org/10.1038/nature11836>
- Poulter, B., Frank, D., Ciais, P., Myneni, R. B., Andela, N., Bi, J., Broquet, G., Canadell, J. G., Chevallier, F., Liu, Y. Y., Running, S. W., Sitch, S., & van der Werf, G. R. (2014). Contribution of semi-arid ecosystems to interannual variability of the global carbon cycle. *Nature*, 509(7502), 600–603. <https://doi.org/10.1038/nature13376>
- Prior, L. D., Eamus, D., & Bowman, D. (2004). Tree growth rates in north Australian savanna habitats: Seasonal patterns and correlations with leaf attributes. *Australian Journal of Botany*, 52(3), 303–314. <https://doi.org/10.1071/bt03119>
- Pritzkow, C., Szota, C., Williamson, V. G., & Arndt, S. K. (2020). Phenotypic plasticity of drought tolerance traits in a widespread Eucalypt (*Eucalyptus obliqua*). *Forests*, 11(12), 1371. <https://doi.org/10.3390/f11121371>
- Qiu, B., Ge, J., Guo, W., Pitman, A. J., & Mu, M. (2020). Responses of Australian dryland vegetation to the 2019 heat wave at a sub-daily scale. *Geophysical Research Letters*, 47(4). <https://doi.org/10.1029/2019GL086569>
- Ratcliffe, J. L., Campbell, D. I., Clarkson, B. R., Wall, A. M., & Schipper, L. A. (2019). Water table fluctuations control CO₂ exchange in wet and dry bogs through different mechanisms. *Science of the Total Environment*, 655, 1037–1046. <https://doi.org/10.1016/J.SCITOTENV.2018.11.151>
- Ratcliffe, J. L., Campbell, D. I., Schipper, L. A., Wall, A. M., & Clarkson, B. R. (2020). Recovery of the CO₂ sink in a remnant peatland following water table lowering. *Science of the Total Environment*, 718, 134613. <https://doi.org/10.1016/j.scitotenv.2019.134613>
- Raupach, M. R., Quéré, C. L., Peters, G. P., & Canadell, J. G. (2013). Anthropogenic CO₂ emissions. *Nature Climate Change*, 3(7), 603–604. <https://doi.org/10.1038/nclimate1910>
- Rebmann, C., Aubinet, M., Schmid, H. P., Arriga, N., Aurela, M., Burba, G., Clement, R., De Ligne, A., Fratini, G., Gielen, B., Grace, J., Graf, A., Gross, P., Haapanala, S., Herbst, M., Hörtnagl, L., Ibrom, A., Joly, L., Kljun, N., ... Franz, D. (2018). ICOS eddy covariance flux-station site setup: A review. *International Agrophysics*, 32(4), 471–494. <https://doi.org/10.1515/intag-2017-0044>
- Renchon, A. A., Griebel, A., Metzen, D., Williams, C. A., Medlyn, B., Duursma, R. A., Barton, C. V. M., Maier, C., Boer, M. M., Isaac, P., Tissue, D., Resco de Dios, V., & Pendall, E. (2018). Upside-down fluxes Down Under: CO₂ net sink in winter and net source in summer in a temperate evergreen broadleaf forest. *Biogeosciences*, 15(12), 3703–3716. <https://doi.org/10.5194/bg-15-3703-2018>
- Restrepo-Coupe, N., Huete, A., Davies, K., Cleverly, J., Beringer, J., Eamus, D., van Gorsel, E., Hutley, L. B., & Meyer, W. S. W. S. (2016). MODIS vegetation products as proxies of photosynthetic potential along a gradient of meteorologically and biologically driven ecosystem productivity. *Biogeosciences*, 13(19), 5587–5608. <https://doi.org/10.5194/bg-13-5587-2016>
- Richards, A. E., Cook, G. D., & Lynch, B. T. (2011). Optimal fire regimes for soil carbon storage in tropical Savannas of Northern Australia. *Ecosystems*, 14(3), 503–518. <https://doi.org/10.1007/S10021-011-9428-8>
- Roderick, M. L., & Farquhar, G. D. (2004). Changes in the Australian pan evaporation from 1970 to 2002. *International Journal of Climatology*, 24(9), 1077–1090. <https://doi.org/10.1002/joc.1061>
- Rogers, A., Medlyn, B. E., Dukes, J. S., Bonan, G., von Caemmerer, S., Dietze, M. C., Kattge, J., Leakey, A. D. B., Mercado, L. M., Niinemets, Ü., Prentice, I. C., Serbin, S. P., Sitch, S., Way, D. A., & Zaehle, S. (2017). A roadmap for improving the representation of photosynthesis in Earth system models. *New Phytologist*, 213(1), 22–42. <https://doi.org/10.1111/nph.14283>
- Rogers, C. D. W., & Beringer, J. (2017). Describing rainfall in northern Australia using multiple climate indices. *Biogeosciences*, 14(3), 597–615. <https://doi.org/10.5194/bg-14-597-2017>
- Rutledge, S., Mudge, P. L., Campbell, D. I., Woodward, S. L., Goodrich, J. P., Wall, A. M., Kirschbaum, M. U. F., & Schipper, L. A. (2015). Carbon balance of an intensively grazed temperate dairy pasture over four years. *Agriculture, Ecosystems & Environment*, 206, 10–20. <https://doi.org/10.1016/j.agee.2015.03.011>
- Rutledge, S., Wall, A. M., Mudge, P. L., Troughton, B., Campbell, D. I., Pronger, J., Joshi, C., & Schipper, L. A. (2017). The carbon balance of temperate grasslands part II: The impact of pasture renewal via direct drilling. *Agriculture, Ecosystems & Environment*, 239, 132–142. <https://doi.org/10.1016/J.AGEE.2017.01.013>
- Sanders, A. F. J., Verstraeten, W., Kooreman, M. L., van Leth, T. C., Beringer, J., Joiner, J., & Leth, T. (2016). Spaceborne sun-induced vegetation fluorescence time series from 2007 to 2015 evaluated with Australian flux tower measurements. *Remote Sensing*, 8(11), 1–24. <https://doi.org/10.3390/rs8110895>
- Schimel, D., & Schneider, F. D. (2019). Flux towers in the sky: Global ecology from space. *New Phytologist*, 224(2), 570–584. <https://doi.org/10.1111/nph.15934>
- Sea, W. B., Choler, P., Beringer, J., Weinmann, R. A., Hutley, L. B., Leuning, R., & Beringer, J. (2011). Documenting improvement in leaf area index estimates from MODIS using hemispherical photos for Australian savannas. *Agricultural and Forest Meteorology*, 151(11), 1453–1461. <https://doi.org/10.1016/j.agrformet.2010.12.006>
- Sippel, S., Reichstein, M., Ma, X., Mahecha, M. D., Lange, H., Flach, M., & Frank, D. (2018). Drought, heat, and the carbon cycle: A review. *Current Climate Change Reports*, 4(3), 266–286. <https://doi.org/10.1007/S40641-018-0103-4>
- Spawn, S. A., Sullivan, C. C., Lark, T. J., & Gibbs, H. K. (2020). Harmonized global maps of above and belowground biomass carbon density in the year 2010. *Scientific Data*, 7(1), 1–22. <https://doi.org/10.1038/s41597-020-0444-4>
- Springer, K. R., Wang, R., & Gamon, J. A. (2017). Parallel seasonal patterns of photosynthesis, fluorescence, and reflectance indices in boreal trees. *Remote Sensing*, 9, 691. <https://doi.org/10.3390/RS9070691>

- Stephens, C. M., McVicar, T. R., Johnson, F. M., & Marshall, L. A. (2018). Revisiting Pan Evaporation Trends in Australia a Decade on. *Geophysical Research Letters*, 45(20), 11164–11172. <https://doi.org/10.1029/2018GL079332>
- Stocker, B. D., Zscheischler, J., Keenan, T. F., Prentice, I. C., Peñuelas, J., & Seneviratne, S. I. (2018). Quantifying soil moisture impacts on light use efficiency across biomes. *New Phytologist*, <https://doi.org/10.1111/nph.15123>
- Sun, Q., Meyer, W. S., Koerber, G. R., & Marschner, P. (2015). Response of respiration and nutrient availability to drying and rewetting in soil from a semi-arid woodland depends on vegetation patch and a recent wildfire. *Biogeosciences*, 12(16), 5093–5101. <https://doi.org/10.5194/BG-12-5093-2015>
- Sun, Q., Meyer, W. S., Koerber, G. R., & Marschner, P. (2017). Prior rainfall pattern determines response of net ecosystem carbon exchange to a large rainfall event in a semi-arid woodland. *Agriculture, Ecosystems & Environment*, 247, 112–119. <https://doi.org/10.1016/j.agee.2017.06.032>
- Sun, Q., Meyer, W. S., Koerber, G. R., & Marschner, P. (2020). Rapid recovery of net ecosystem production in a semi-arid woodland after a wildfire. *Agricultural and Forest Meteorology*, 291, 108099. <https://doi.org/10.1016/J.AGRFORMET.2020.108099>
- Tarin, T., Nolan, R. H., Eamus, D., & Cleverly, J. (2020a). Carbon and water fluxes in two adjacent Australian semi-arid ecosystems. *Agricultural and Forest Meteorology*, 281, 107853. <https://doi.org/10.1016/j.agrformet.2019.107853>
- Tarin, T., Nolan, R. H., Medlyn, B. E., Cleverly, J., & Eamus, D. (2020b). Water-use efficiency in a semi-arid woodland with high rainfall variability. *Global Change Biology*, 26(2), 496–508. <https://doi.org/10.1111/gcb.14866>
- Teckentrup, L., De Kauwe, M. G., Pitman, A. J., & Smith, B. (2021). Examining the sensitivity of the terrestrial carbon cycle to the expression of El Niño. *Biogeosciences*, 18(6), 2181–2203. <https://doi.org/10.5194/BG-18-2181-2021>
- Tramontana, G., Jung, M., Schwalm, C. R., Ichii, K., Camps-Valls, G., Ráduly, B., Reichstein, M., Arain, M. A., Cescatti, A., Kiely, G., Merbold, L., Serrano-Ortiz, P., Sickert, S., Wolf, S., & Papale, D. (2016). Predicting carbon dioxide and energy fluxes across global FLUXNET sites with regression algorithms. *Biogeosciences*, 13(14), 4291–4313. <https://doi.org/10.5194/BG-13-4291-2016>
- Ukkola, A. M., De Kauwe, M. G., Pitman, A. J., Best, M. J., Abramowitz, G., Haverd, V., Decker, M., & Houghton, N. (2016). Land surface models systematically overestimate the intensity, duration and magnitude of seasonal-scale evaporative droughts. *Environmental Research Letters*, 11(10), 104012. <https://doi.org/10.1088/1748-9326/11/10/104012>
- Van der Horst, S. V. J., Pitman, A. J., De Kauwe, M. G., Ukkola, A., Abramowitz, G., & Isaac, P. (2019). How representative are FLUXNET measurements of surface fluxes during temperature extremes? *Biogeosciences*, 16(8), 1829–1844. <https://doi.org/10.5194/BG-16-1829-2019>
- van der Velde, I. R., van der Werf, G. R., Houweling, S., Maasakkers, J. D., Borsdorff, T., Landgraf, J., Tol, P., van Kempen, T. A., van Hees, R., Hoogeveen, R., Veefkind, J. P., & Aben, I. (2021). Vast CO₂ release from Australian fires in 2019–2020 constrained by satellite. *Nature*, 597(7876), 366–369. <https://doi.org/10.1038/s41586-021-03712-y>
- van Dijk, A. I. J. M. (2010). The Australian water resources assessment system Landscape Model (version 0.5) Evaluation Against Observations. http://www.bom.gov.au/water/landscape/assets/static/publications/Van_Dijk_AWRA05_TechReport4.pdf
- Van Etten, E. J. B. (2009). Inter-annual Rainfall Variability of Arid Australia: Greater than elsewhere? *Australian Geographer*, 40(1), 109–120. <https://doi.org/10.1080/00049180802657075>
- van Gorsel, E., Berni, J. A. J., Briggs, P., Cabello-Leblic, A., Chasmer, L., Cleugh, H. A., Hacker, J., Hantson, S., Haverd, V., Hughes, D., Hopkinson, C., Keith, H., Kljun, N., Leuning, R., Yebra, M., & Zegelin, S. (2013). Primary and secondary effects of climate variability on net ecosystem carbon exchange in an evergreen Eucalyptus forest. *Agricultural and Forest Meteorology*, 182–183, 248–256. <https://doi.org/10.1016/j.agrformet.2013.04.027>
- van Gorsel, E., Wolf, S., Cleverly, J., Isaac, P., Haverd, V., Ewenz, C., Arndt, S., Beringer, J., De Dios, V. R., Evans, B. J., Prober, S. M., & Silberstein, R. (2016). Carbon uptake and water use in woodlands and forests in southern Australia during an extreme heat wave event in the “angry Summer” of 2012/2013. *Biogeosciences*, 13(21), 5947–5964. <https://doi.org/10.5194/bg-13-5947-2016>
- Verma, M., Schimel, D., Evans, B., Frankenberg, C., Beringer, J., Drewry, D. T., Magney, T., Marang, I., Hutley, L., Moore, C., Eldering, A., Moore, C., Eldering, A., Moore, C., & Eldering, A. (2017). Effect of environmental conditions on the relationship between solar-induced fluorescence and gross primary productivity at an OzFlux grassland site. *Journal of Geophysical Research: Biogeosciences*, 122(3), 716–733. <https://doi.org/10.1002/2016JG003580>
- von Buttlar, J., Zscheischler, J., Rammig, A., Sippel, S., Reichstein, M., Knohl, A., Jung, M., Menzer, O., Arain, M. A., Buchmann, N., Cescatti, A., Gianelle, D., Kiely, G., Law, B. E., Magliulo, V., Margolis, H., McCaughey, H., Merbold, L., Migliavacca, M., ... Mahecha, M. D. (2018). Impacts of droughts and extreme temperature events on gross primary production and ecosystem respiration: a systematic assessment across ecosystems and climate zones. *Biogeosciences*, 15(5), 1293–1318. <https://doi.org/10.5194/bg-15-1293-2018>
- Walker, A. P., De Kauwe, M. G., Bastos, A., Belmecheri, S., Georgiou, K., Keeling, R. F., McMahon, S. M., Medlyn, B. E., Moore, D. J. P., Norby, R. J., Zaehle, S., Anderson-Teixeira, K. J., Battipaglia, G., Brienen, R. J. W., Cabugao, K. G., Cailleret, M., Campbell, E., Canadell, J. G., Ciais, P., & Zuidema, P. A. (2021). Integrating the evidence for a terrestrial carbon sink caused by increasing atmospheric CO₂. In *New phytologist* (vol. 229, pp. 2413–2445). Blackwell Publishing Ltd. <https://doi.org/10.1111/nph.16866>
- Wall, A. M., Campbell, D. I., Morcom, C. P., Mudge, P. L., & Schipper, L. A. (2020). Quantifying carbon losses from periodic maize silage cropping of permanent temperate pastures. *Agriculture, Ecosystems & Environment*, 301, 107048. <https://doi.org/10.1016/J.AGEE.2020.107048>
- Wall, A. M., Campbell, D. I., Mudge, P. L., Rutledge, S., & Schipper, L. A. (2019). Carbon budget of an intensively grazed temperate grassland with large quantities of imported supplemental feed. *Agriculture, Ecosystems & Environment*, 281, 1–15. <https://doi.org/10.1016/J.AGEE.2019.04.019>
- Wall, A. M., Campbell, D. I., Mudge, P. L., & Schipper, L. A. (2020). Temperate grazed grassland carbon balances for two adjacent paddocks determined separately from one eddy covariance system. *Agricultural and Forest Meteorology*, 287, 107942. <https://doi.org/10.1016/J.AGRFORMET.2020.107942>
- Wang, Y. P., Kowalczyk, E., Leuning, R., Abramowitz, G., Raupach, M. R., Pak, B., van Gorsel, E., & Luhar, A. (2011). Diagnosing errors in a land surface model (CABLE) in the time and frequency domains. *Journal of Geophysical Research*, 116(G1), G01034. <https://doi.org/10.1029/2010JG001385>
- Wardlaw, T. (2021). Measuring a fire. The Story of the January 2019 Fire Told from Measurements at the Warra Supersite, Tasmania. *Fire* 4(2), 15. <https://doi.org/10.3390/FIRE4020015>
- Webb, E. K., Pearman, G. I., & Leuning, R. (1980). Correction of flux measurements for density effects due to heat and water vapour transfer. *Quarterly Journal of the Royal Meteorological Society*, 106, 85–100. <https://doi.org/10.1002/qj.49710644707>
- Webb, J. R., Santos, I. R., Maher, D. T., Macdonald, B., Robson, B., Isaac, P., & McHugh, I. (2018). Terrestrial versus aquatic carbon fluxes in a subtropical agricultural floodplain over an annual cycle. *Agricultural and Forest Meteorology*, 260–261, 262–272. <https://doi.org/10.1016/J.AGRFORMET.2018.06.015>

- Wecking, A. R., Wall, A. M., Liang, L. L., Lindsey, S. B., Luo, J., Campbell, D. I., & Schipper, L. A. (2020). Reconciling annual nitrous oxide emissions of an intensively grazed dairy pasture determined by eddy covariance and emission factors. *Agriculture, Ecosystems & Environment*, 287, 106646. <https://doi.org/10.1016/j.agee.2019.106646>
- Weerasinghe, L. K., Creek, D., Crous, K. Y., Xiang, S., Liddell, M. J., Turnbull, M. H., & Atkin, O. K. (2014). Canopy position affects the relationships between leaf respiration and associated traits in a tropical rainforest in Far North Queensland. *Tree Physiology*, 34(6), 564–584. <https://doi.org/10.1093/TREEPHYS/TPU016>
- Wendt, C. K., Beringer, J., Tapper, N. J., & Hutley, L. B. (2007). Local boundary-layer development over burnt and unburnt tropical savanna: an observational study. *Boundary-Layer Meteorology*, 124(2), 291–304. <https://doi.org/10.1007/s10546-006-9148-3>
- Whitley, R., Beringer, J., Hutley, L. B., Abramowitz, G., De Kauwe, M. G., Duursma, R., Evans, B., Haverd, V., Li, L., Ryu, Y., Williams, M., Yu, Q., Smith, B., Wang, Y.-P., Williams, M., & Yu, Q. (2016). A model inter-comparison study to examine limiting factors in modelling Australian tropical savannas. *Biogeosciences*, 13(11), 3245–3265. <https://doi.org/10.5194/bg-13-3245-2016>
- Whitley, R., Beringer, J., Hutley, L. B., Abramowitz, G., De Kauwe, M. G., Evans, B., Haverd, V., Li, L., Moore, C., Ryu, Y., Scheiter, S., Schymanski, S. J., Smith, B., Wang, Y.-P., Williams, M., Yu, Q., Scheiter, S., Schymanski, S. J., Smith, B., ... Yu, Q. (2017). Challenges and opportunities in land surface modelling of savanna ecosystems. *Biogeosciences*, 14(20), 4711–4732. <https://doi.org/10.5194/bg-14-4711-2017>
- Wilkinson, M. D., Dumontier, M., Aalbersberg, I. J., Appleton, G., Axton, M., Baak, A., Blomberg, N., Boiten, J.-W., da Santos, L. B. S., Bourne, P. E., Bouwman, J., Brookes, A. J., Clark, T., Crosas, M., Dillo, I., Dumon, O., Edmunds, S., Evelo, C. T., & Finkers, R. ... Mons, B. (2016). The FAIR guiding principles for scientific data management and stewardship. *Scientific Data*, 3(1), 1–9. <https://doi.org/10.1038/sdata.2016.18>
- Woodgate, W., van Gorsel, E., Hughes, D., Suarez, L., Jimenez-Berni, J., & Held, A. (2020). THEMIS: An automated thermal and hyperspectral proximal sensing system for canopy reflectance, radiance and temperature. *Plant Methods*, 16(1), 1–17. <https://doi.org/10.1186/s13007-020-00646-w>
- Wu, J., Albert, L. P., Lopes, A. P., Restrepo-Coupe, N., Hayek, M., Wiedemann, K. T., Guan, K., Stark, S. C., Christoffersen, B., Prohaska, N., Tavares, J. V., Marostica, S., Kobayashi, H., Ferreira, M. L., Campos, K. S., da Silva, R., Brando, P. M., Dye, D. G., Huxman, T. E., ... Saleska, S. R. (2016). Leaf development and demography explain photosynthetic seasonality in Amazon evergreen forests. *Science*, 351(6276), 972–976. <https://doi.org/10.1126/science.aad5068>
- Xiao, J., Chevallier, F., Gomez, C., Guanter, L., Hicke, J. A., Huete, A. R., Ichii, K., Ni, W., Pang, Y., Rahman, A. F., Sun, G., Yuan, W., Zhang, L., & Zhang, X. (2019). Remote sensing of the terrestrial carbon cycle: A review of advances over 50 years. *Remote Sensing of Environment*, 233, 111383. <https://doi.org/10.1016/j.rse.2019.111383>
- Xiao, J., Fisher, J. B., Hashimoto, H., Ichii, K., & Parazoo, N. C. (2021). Emerging satellite observations for diurnal cycling of ecosystem processes. *Nature Plants*, 7(7), 877–887. <https://doi.org/10.1038/s41477-021-00952-8>
- Xie, Z., Huete, A., Cleverly, J., Phinn, S., McDonald-Madden, E., Cao, Y., & Qin, F. (2019). Multi-climate mode interactions drive hydrological and vegetation responses to hydroclimatic extremes in Australia. *Remote Sensing of Environment*, 231, 111270. <https://doi.org/10.1016/j.rse.2019.111270>
- Yang, J., Duursma, R. A., De Kauwe, M. G., Kumarathunge, D., Jiang, M., Mahmud, K., Gimeno, T. E., Crous, K. Y., Ellsworth, D. S., Peters, J., Choat, B., Eamus, D., & Medlyn, B. E. (2019). Incorporating non-stomatal limitation improves the performance of leaf and canopy models at high vapour pressure deficit. *Tree Physiology*, 39(12), 1961–1974. <https://doi.org/10.1093/TREEPHYS/TPZ103>
- Zhang, Y., Chen, J. M., Miller, J. R., & Noland, T. L. (2008). Leaf chlorophyll content retrieval from airborne hyperspectral remote sensing imagery. *Remote Sensing of Environment*, 112(7), 3234–3247. <https://doi.org/10.1016/j.rse.2008.04.005>
- Zhang, Y., Kong, D., Gan, R., Chiew, F. H. S., McVicar, T. R., Zhang, Q., & Yang, Y. (2019). Coupled estimation of 500 m and 8-day resolution global evapotranspiration and gross primary production in 2002–2017. *Remote Sensing of Environment*, 222, 165–182. <https://doi.org/10.1016/j.rse.2018.12.031>
- Ziehn, T., Chamberlain, M. A., Law, R. M., Lenton, A., Bodman, R. W., Dix, M., Stevens, L., Wang, Y. P., & Srbinovsky, J. (2020). The Australian Earth System Model: ACCESS-ESM1.5. *Journal of Southern Hemisphere Earth Systems Science*, 70(1), 193–214. <https://doi.org/10.1071/ES19035>
- Zscheischler, J., Fatichi, S., Wolf, S., Blanken, P. D., Bohrer, G., Clark, K., Desai, A. R., Hollinger, D., Keenan, T., Novick, K. A., & Seneviratne, S. I. (2016). Short-term favorable weather conditions are an important control of interannual variability in carbon and water fluxes. *Journal of Geophysical Research: Biogeosciences*, 121(8), 2186–2198. <https://doi.org/10.1002/2016JG003503>
- Zscheischler, J., Mahecha, M. D., Avitabile, V., Calle, L., Carvalhais, N., Ciais, P., Gans, F., Gruber, N., Hartmann, J., Herold, M., Ichii, K., Jung, M., Landschützer, P., Laruelle, G. G., Lauerwald, R., Papale, D., Peylin, P., Poulter, B., Ray, D., ... Reichstein, M. (2017). Reviews and syntheses: An empirical spatiotemporal description of the global surface-atmosphere carbon fluxes: Opportunities and data limitations. *Biogeosciences*, 14(15), 3685–3703. <https://doi.org/10.5194/bg-14-3685-2017>

How to cite this article: Beringer, J., Moore, C. E., Cleverly, J., Campbell, D. I., Cleugh, H., De Kauwe, M. G., Kirschbaum, M. U. F., Griebel, A., Grover, S., Huete, A., Hutley, L. B., Laubach, J., van Niel, T., Arndt, S. K., Bennett, A. C., Cernusak, L. A., Eamus, D., Ewenz, C. M., Goodrich, J. P., ... Woodgate, W. (2022). Bridge to the future: Important lessons from 20 years of ecosystem observations made by the OzFlux network. *Global Change Biology*, 28, 3489–3514. <https://doi.org/10.1111/gcb.16141>