

Minerva Access is the Institutional Repository of The University of Melbourne

Author/s:

Pax, AP;Ong, L;Pax, RA;Vongsvivut, J;Tobin, MJ;Kentish, SE;Gras, SL

Title:

Industrial freezing and tempering for optimal functional properties in thawed Mozzarella cheese

Date:

2023-03-30

Citation:

Pax, A. P., Ong, L., Pax, R. A., Vongsvivut, J., Tobin, M. J., Kentish, S. E. & Gras, S. L. (2023). Industrial freezing and tempering for optimal functional properties in thawed Mozzarella cheese. *Food Chemistry*, 405 (Pt B), <https://doi.org/10.1016/j.foodchem.2022.134933>.

Persistent Link:

<https://hdl.handle.net/11343/322651>

# 1 **Industrial freezing and tempering for optimal functional properties in** 2 **thawed Mozzarella cheese**

3 Anita P. Pax<sup>a,b</sup>, Lydia Ong<sup>a,b</sup>, Randolph A. Pax<sup>c</sup>, Jitraporn Vongsivut<sup>d</sup>, Mark J. Tobin<sup>d</sup>, Sandra E. Kentish<sup>a</sup>, Sally L.

4 Gras<sup>\*a,b</sup>

5 <sup>a</sup> The ARC Dairy Innovation Hub, The Department of Chemical Engineering, The University of Melbourne,  
6 Parkville, Victoria 3010, Australia

7 <sup>b</sup> The Bio21 Institute, The University of Melbourne, Parkville, Victoria 3010, Australia

8 <sup>c</sup> RAP Innovation and Development Pty Ltd, PO Box 559, Indooroopilly, Queensland 4068, Australia

9 <sup>d</sup> Infrared Microspectroscopy (IRM) Beamline, ANSTO – Australian Synchrotron, 800 Blackburn Road, Clayton,  
10 Victoria 3168, Australia

11 \*Corresponding author: The Bio21 Molecular Science and Biotechnology Institute, The University of  
12 Melbourne, Parkville, Victoria 3010, Australia. Tel.: +61 3 8344 6281; Fax: +61 3 8344 4153. E-mail address:  
13 [sgras@unimelb.edu.au](mailto:sgras@unimelb.edu.au)

## 14 **Abstract**

15 Mozzarella cheese was industrially frozen (-18 °C), stored for up to six months, tempered at 4 °C for one or  
16 three weeks and the structure and functionality compared to cheese stored at 4 °C and cheese aged at 4 °C  
17 for four weeks prior to freezing. When combined with ageing or tempering, the slow industrial freezing  
18 minimised changes to the protein network as detected by confocal microscopy and arrested proteolysis.  
19 Cheese functionality improved with three weeks of tempering, with properties similar to cheese refrigerated  
20 for one month, potentially due to increased proteolysis and protein rehydration. Frozen storage induced  $\beta$ -  
21 sheet and  $\beta$ -turn structures, as detected by S-FTIR microspectroscopy, with longer tempering leading to  
22 structural recovery in the cheese. This study indicates the proteolysis and functionality of frozen cheese can  
23 be optimised with tempering time. It also provides new insights into heat transfer during the industrial  
24 freezing and tempering of cheese.

## 25 **Keywords**

26 Microstructure; dairy; meltability; protein structure; freezing; frozen; temperature profile; heat transfer;

## 27 **1. Introduction**

28 Freezing is widely used in the food industry to preserve product quality, extend shelf life and allow product  
29 distribution to more distant export markets (Kuo & Gunasekaran, 2009; Reid & Yan, 2004). Freezing may be  
30 achieved by air blast chilling, storage in natural convection freezers or by individual quick freezing (IQF),  
31 where individual product units or particles are frozen before or after packaging. Food may also be stored at  
32 low temperature in an unfrozen state, using a process called supercooling, where the product structure may  
33 be retained and energy saved as the latent heat of the product is not removed (Stonehouse & Evans, 2015). A  
34 drawback of supercooling, however, is that this process does not provide the same extension to shelf life as  
35 freezing, highlighting the importance of ongoing studies that can improve our understanding of the freezing of  
36 food products.

37 The freezing point for Mozzarella cheese ranges from -1.2 °C to -5 °C, depending on the conditions applied  
38 (Diefes, Rizvi, & Bartsch, 1993; Ribero, Rubiolo, & Zorrilla, 2007). This variability arises from the concentration  
39 of solutes in the aqueous phase, with salt being a key solute that depresses the freezing point (Ribero et al.,  
40 2007). Other factors, such as Mozzarella age, free moisture content and cheese structure may also affect the  
41 freezing temperature.

42 Structural damage can occur during freezing leading to a change in cheese properties (Fontecha et al., 1996;  
43 Verdini, Zorrilla, & Rubiolo, 2005). Such damage is likely via two mechanisms: firstly the phase change and  
44 thermal expansion from water to ice may physically alter the protein network; and secondly local dehydration  
45 may alter protein structure (Diefes et al., 1993; Fontecha, Peláez, Juárez, & Martín-Hernández, 1994; Kuo &  
46 Gunasekaran, 2009). Local dehydration of proteins may occur when water that is free or entrapped within the  
47 network freezes. Not all water freezes, however, with some vicinal and multilayer water molecules remaining  
48 unfrozen and associated with hydrophilic sites within the cheese matrix (Coulter, 2009). Changes to protein  
49 hydration may also alter protein secondary structure, which can be detected by spectroscopy (Pax et al.,  
50 2019).

51 Both the rate at which the cheese is cooled to the freezing point and the length of time for conversion to a  
52 solid phase likely influence the extent of structural damage (Oberg, Merrill, Brown, & Richardson, 1992). To  
53 date, most experimental studies have applied cooling rates that are much faster than those that occur in  
54 industrial situations. Prior studies report reductions in temperature from -1.1 °C to -6.7 °C occurring over a  
55 period of 0.2-10 hours compared to ~100 hours at commercial scale (Bertola, Califano, Bevilacqua, & Zaritzky,  
56 1996; Diefes et al., 1993; Fontecha et al., 1996; Kuo & Gunasekaran, 2003; To et al., 2020). This situation is in  
57 part due to samples being smaller than those industrially frozen, i.e., 1.5-2.5 kg at laboratory scale compared  
58 to 5 kg or greater at commercial scale (Diefes et al., 1993; Kuo & Gunasekaran, 2003), the contribution of  
59 associated packaging is also not often considered.

60 Freezing impacts on several biochemical processes that occur within the cheese, such as proteolysis.  
61 Proteolysis is a critical factor in determining product properties, with increased protein breakdown correlated  
62 with cheese softening and adhesiveness (Bertola et al., 1996). However, the effect of freezing on proteolysis is  
63 complex. Low temperatures, such as -20 °C, are reported to slow proteolysis in cheese by halting the activity  
64 of starter bacteria and any residual coagulant (Fontecha et al., 1994). Proteolysis may be faster after thawing,  
65 due to changes in casein conformation induced by freezing and thawing or the lysis of starter bacteria  
66 (Fontecha et al., 1994; Verdini et al., 2005). Interestingly, the order of proteolytic pathways remains the same  
67 before and after freezing, with  $\alpha_{s1}$ -casein being hydrolysed first (Verdini et al., 2005), suggesting that residual  
68 coagulant re-activates on thawing. For Mozzarella, both proteolysis and product properties are reported to be  
69 optimal after approximately four weeks of refrigerated storage in an unfrozen product (Kindstedt, Carić, &  
70 Milanović, 2004), making this a key comparative reference point.

71 Mozzarella cheese is typically used on a pizza or other baked foods, making its functional properties, including  
72 melt and stretch, important to monitor. A further consideration is the duration of frozen storage. Long supply  
73 chains can involve extended periods of frozen storage with some evidence that the duration of frozen storage  
74 up to nine months can impact on cheese sensory properties for Manchego-type cheese (Prados, Pino, Rincón,  
75 Vioque, & Fernández-Salguero, 2006). Previous studies have typically examined cheese stored frozen for up to  
76 four months (Fontecha et al., 1996; Oberg et al., 1992). While some studies have extended storage for up to

77 nine months, the focus has been only on sensory and microbiological properties (Prados et al., 2006). Longer  
78 studies assessing the impact of freezing could therefore provide new insights.

79 Freezing may also be coupled with tempering, a thawing process performed at refrigeration temperatures.  
80 Two weeks of tempering is reported to improve the meltability and stretchability of Mozzarella compared to  
81 the freshly thawed product (Kuo & Gunasekaran, 2003; Oberg et al., 1992). This improvement may be due to  
82 proteolysis that occurs during tempering (Fontecha et al., 1996), although the exact mechanism is not known,  
83 as most studies have not assessed proteolysis under these conditions.

84 The aim of this study was to assess whether chilling and freezing induced structural and functional changes in  
85 Mozzarella cheese. The effect of ageing cheese at 4 °C prior to freezing or tempering cheese at 4 °C for one or  
86 three weeks after freezing was also determined. The microstructure, proteolysis and functionality of  
87 Mozzarella cheese was assessed over a six-month storage period to provide insights to assist with the  
88 optimisation of conditions for extended storage.

## 89 **2. Materials and methods**

### 90 **2.1 Cheese samples and sample preparation**

91 A series of 5 kg low-moisture *pasta filata* Mozzarella cheese blocks produced from a single manufacturing run  
92 at a commercial cheese factory (Victoria, Australia) were used for trials in order to reduce variability  
93 introduced by different manufacturing runs, which was not the focus of this study. The cheese had a standard  
94 composition within the range typical for Mozzarella (Kindstedt et al., 2004), with 21.3-21.4% (w/w) fat, 25.1-  
95 25.5% (w/w) protein, 49.9-50.4% (w/w) moisture and 0.8-1.0% (w/w) salt.

96 Following manufacture, 36 boxes of cheese were packaged in cardboard and close stacked in 4 layers of 9  
97 boxes to form a pallet (Supplementary Information (SI) Figure S1). Each rectangular cardboard box contained  
98 4 individually plastic wrapped 5 kg cheese blocks stacked without spacing within the box. Temperature probes  
99 (stainless steel immersion food probe attached to Testo 175 T1 – Temperature data logger, Melbourne,  
100 Australia) were inserted into selected boxes in the bottom layer (corner box), the second bottom layer

101 (central box) and third layer (opposite corner boxes). The probe was inserted into the center of one of the  
102 four cheese blocks in each of these boxes (see Figure S1). These probe locations were selected to provide an  
103 indication of the variability in temperature between blocks in the pallet stacking configuration.

104 Following packing, the pallet was immediately chilled. Initially there was a rapid chilling phase in a commercial  
105 blast freezer with high air velocity at  $-18\text{ }^{\circ}\text{C}$  for 96 h. After chilling to between approximately  $0\text{ }^{\circ}\text{C}$  and  $-4\text{ }^{\circ}\text{C}$  for  
106 85-95 hours, 14 boxes of cheese were removed from the pallet. These were 9 boxes from the top layer and 5  
107 boxes from the next layer down (Figure S1b). Five of these boxes were transferred to  $4\text{ }^{\circ}\text{C}$  storage, where they  
108 were refrigerated for up to 6 months to provide control samples. The other 9 boxes were stored at  $4\text{ }^{\circ}\text{C}$  for  
109 four weeks before transferring to  $-18\text{ }^{\circ}\text{C}$  for up to 5 additional months. The remaining 22 boxes within the  
110 pallet (Figure S1c), were further stored and chilled in a  $-18\text{ }^{\circ}\text{C}$  freezer for up to 6 months.

111 The sample treatments of ageing at  $4\text{ }^{\circ}\text{C}$  prior to freezing or tempering at  $4\text{ }^{\circ}\text{C}$  after frozen storage were  
112 selected as processing and handling steps that industry may employ to supply Mozzarella cheese with optimal  
113 functionality. Cheese manufacturers may age Mozzarella cheese prior to freezing or direct retail customers to  
114 apply a tempering step to frozen Mozzarella cheese to restore functionality in frozen product.

115 Frozen samples were collected after one, three or six months of frozen storage at  $-18\text{ }^{\circ}\text{C}$  and were stored at  
116  $4\text{ }^{\circ}\text{C}$  for a further one or three weeks, defined here as tempering, before further analysis. At each timepoint, 2  
117 cardboard boxes were removed from the pallet and each of these cardboard boxes individually placed in  $4\text{ }^{\circ}\text{C}$   
118 storage for the tempering process. These conditions reflect a process that often occurs within the supply  
119 chain; when product that has been frozen as a pallet at industrial scale may be thawed in smaller packaged  
120 units by a retail customer. Refrigerated samples were also collected after one, three and six months of storage  
121 at  $4\text{ }^{\circ}\text{C}$ . Three of the four 5 kg blocks within each cardboard box were randomly selected for analysis. These  
122 storage treatments provided three conditions for comparison: cheese refrigerated at  $4\text{ }^{\circ}\text{C}$ , cheese frozen at  $-$   
123  $18\text{ }^{\circ}\text{C}$  and tempered for one week and cheese frozen at  $-18\text{ }^{\circ}\text{C}$  and tempered for three weeks. There are also  
124 three different time points for comparison for each of the storage treatments with one, three and six months  
125 of storage.

126 In addition, a storage treatment that involved ageing at 4 °C for four weeks followed by frozen storage at -18  
127 °C for five months, to give six months total storage time, was also examined. These samples were used for  
128 Synchrotron-Fourier transform infrared (S-FTIR) microspectroscopy, proteolysis analysis and pizza bake tests  
129 (see below).

130 Cheese composition was assessed using the Babcock method (AOAC, 2002) for fat, the Kjeldahl method (IDF,  
131 1993) for total nitrogen, the oven drying method (IDF, 1982) for total solids and the potentiometric method  
132 for salt concentration (IDF, 1988). The pH was measured using an Orion 720A pH meter (OrionPacific Pty Ltd,  
133 Vic, Australia).

## 134 **2.2 Microstructure of Mozzarella cheese**

135 The microstructure of cheese samples was analysed by confocal laser scanning microscopy (CLSM; Leica  
136 Microsystems, Heidelberg, Germany). Cheese samples of approximately 3 mm x 3 mm x 1 mm in size  
137 prepared with a surgical blade were examined along a plane parallel to the aligned protein segments  
138 following a published method (Pax, Ong, Kentish, & Gras, 2021). Samples were stained with Nile red and Fast  
139 Green FCF (Sigma-Aldrich, St Louis, MO, USA). The Nile red and Fast Green FCF stains were excited at  
140 wavelengths of 488 nm and 633 nm, respectively, with emission detected between 520-590 nm and 660-750  
141 nm, respectively.

142 Three-dimensional (3D) image analysis was conducted using Imaris image analysis software (Bitplane, South  
143 Windsor, CT, USA). Each 3D image was constructed from 40 2D images with a gap of 0.25 µm between each  
144 layer to give a total sample thickness of 10 µm. Six images were collected for each sample and a  
145 representative image is presented.

146 The cheese samples were also analysed in the direction parallel to the aligned protein strands using cryo-SEM  
147 (Quanta, Fei Company, Hillsboro, OR, USA) after six months of storage following an established method (Ong,  
148 Dagastine, Kentish, & Gras, 2011). Cryo-SEM images were collected at different magnifications and one  
149 representative image is presented.

## 150 **2.3 Proteolysis of Mozzarella cheese**

151 The protein within the cheese samples was assessed using sodium dodecyl sulphate polyacrylamide gel  
152 electrophoresis (SDS-PAGE), as described previously (Pax et al., 2021). Cheese samples (25 mg) were used to  
153 produce stock solutions that were diluted four times with Tris (10 mmol/L)-EDTA (1 mmol/L) pH 8.0 buffer  
154 solution. Standards (0.25 mg/mL) of  $\alpha_{s1}$ -,  $\beta$ - and  $\kappa$ -caseins (Sigma-Aldrich) were also prepared. Cheese or  
155 standard solutions (6.5  $\mu$ L) were mixed with 2.5  $\mu$ L Bolt LDS Sample Buffer (4x) and 1  $\mu$ L Bolt reducing agent  
156 (both from Life Technologies, Victoria, Australia) before heating at 70 °C for 10 minutes. The samples and a  
157 molecular weight standard (Novex Sharp unstained, Life Technologies) were loaded onto a 4-12% Tris-glycine  
158 gel (Life Technologies). The stained gel was scanned using a Chemidoc XRS+ with Quantity One software (Bio-  
159 Rad, NSW, Australia). The proteins were identified based on the molecular weight standards. Quantification of  
160 gel band intensities was determined using ImageJ (Research Services Branch, Natl. Inst. Of Health, USA). The  
161 data presented are the mean  $\pm$  the standard deviation of three replicates.

162 The water soluble extract (WSE) of cheese samples was obtained using a previously reported Method (Ong,  
163 Henriksson, & Shah, 2006). This extract was used to determine peptide profiles using a modified version of a  
164 method described previously (Pax et al., 2021) on an Agilent 1100 Series HPLC (Agilent Technologies, Santa  
165 Clara, CA, USA) system fitted with an ultraviolet detector and a 3.6  $\mu$ m C18 column (250x4.6 mm;  
166 Phenomenex, NSW, Australia). The wavelength used for detection was 214 nm. The data presented are the  
167 mean  $\pm$  the standard deviation of three replicates.

## 168 **2.4 Mozzarella cheese functionality tests**

### 169 **2.4.1 Meltability**

170 Cheese samples 36 mm in diameter and  $\approx$ 4 mm in thickness were prepared and the meltability assessed using  
171 a controlled stress rheometer (AR-G2, TA Instruments, Delaware, USA) with a modified published method  
172 (Ma, James, Balaban, Zhang, & Emanuelsson-Patterson, 2013). A temperature sweep test was conducted from  
173 20 °C to 65 °C at 0.05% strain and 0.8 Hz in the linear viscoelastic region. The crossover between the elastic  
174 modulus ( $G'$ ) and the viscous modulus ( $G''$ ), defined as the transition temperature, was determined from this  
175 test. The data presented are the mean  $\pm$  the standard deviation of three replicates.

## 176 **2.4.2 Stretchability**

177 The stretchability of the Mozzarella cheese samples was assessed using an Instron 5944 Single Column  
178 Electro-Mechanical Tension Compression Machine (Instron Corp., Norwood, USA) fitted with 2 kN load cell  
179 and rubber-coated grips. A mass of 25 g of shredded cheese was melted onto a cracker (Salada; dimensions 9  
180 cm x 10 cm; Arnotts Biscuits Ltd, NSW, Australia) at 240 °C for 3.5 minutes. The cheese cracker was then  
181 carefully broken into two halves along the perforated line and secured within the machine grips. The  
182 instrument then pulled apart the halves to a total distance of 40 cm and the force required to move the  
183 cheese and final length of the melted cheese mass were measured. The data presented are the mean ± the  
184 standard deviation of three replicates.

## 185 **2.4.3 Pizza bake test**

186 A pizza bake test was conducted to assess functionality on a pizza using a pizza base (23 cm in diameter;  
187 Coles, Victoria, Australia) that was evenly coated with 90 g of a 1:1 blend of water to tomato paste (Leggos,  
188 Victoria, Australia). Shredded Mozzarella cheese (100 g) was evenly dispersed over half of the pizza and the  
189 pizza baked at 245 °C for 2:45 minutes in an impinger-style pizza oven (High h Conveyor 2020, Turbochef,  
190 Carrollton, TX, USA). These conditions are routinely used within the industry to assess cheese functionality.

191 The baked pizza was visually evaluated for melted cheese characteristics including: melt, the extent of  
192 integration of the separate shreds (from visible shreds to completely melted); free oil release, the volume of  
193 fat released on the surface (from none to very high with optimum being the middle point); browning, the  
194 colour intensity of the cheese (from light brown to very dark brown); blistering, the elevated areas of melted  
195 cheese (including blister size and percentage coverage); and skinning, the extent to which cheese pulls  
196 together across the surface using a fork (from very weak to strong skinning). The stretch length was also  
197 assessed, but is not reported here, as the instrumental method described in Section 2.4.2 was determined to  
198 provide similar, yet more objective, results. With the exception of melt and skinning, a good quality  
199 Mozzarella cheese will, by industry convention, have pizza bake results in the middle of the qualitative ranges  
200 provided. In the case of melt, complete melting is desirable; while very weak skinning is an indicator of a  
201 quality cheese. The results presented are representative of three baked pizzas evaluated by one assessor.

## 202 **2.5 Synchrotron-FTIR microspectroscopy of Mozzarella cheese**

203 The S-FTIR microspectroscopic analysis was conducted in transmission mode following a previously published  
204 protocol (Pax et al., 2019). Thin sections of 8  $\mu\text{m}$  of Mozzarella cheese were prepared in the direction parallel  
205 to the protein strands using a cryo-microtome adjusted to  $-25\text{ }^{\circ}\text{C}$  (Cryostat, Hyrax C60, Carl Zeiss, Germany)  
206 and transferred to  $\text{CaF}_2$  windows. Data were collected at the Australian Synchrotron Infrared  
207 Microspectroscopy (IRM) Beamline (Victoria, Australia) using a Bruker Vertex 80v spectrometer coupled with  
208 a Hyperion 2000 FTIR microscope and a liquid nitrogen-cooled mercury cadmium telluride (MCT) detector  
209 (Bruker Optik GmbH, Ettlingen, Germany). A matching 36x Schwarzschild IR reflecting objective and condenser  
210 ( $\text{NA} = 0.5$ ) were used for data acquisition with a beam aperture size of  $6.9\text{ }\mu\text{m}$  in diameter and step interval of  
211  $3\text{ }\mu\text{m}$ . All S-FTIR spectra were recorded within a spectral range of  $3800\text{-}700\text{ cm}^{-1}$  using  $4\text{ cm}^{-1}$  spectral  
212 resolution. Blackman-Harris 3-Term apodisation, Mertz phase correction and zero-filling factor of 2 were set  
213 as default acquisition parameters using the OPUS 7.2 software suite (Bruker).

214 FTIR maps of Mozzarella cheese stored at  $4\text{ }^{\circ}\text{C}$  for six months,  $-18\text{ }^{\circ}\text{C}$  for six months,  $-18\text{ }^{\circ}\text{C}$  storage for six  
215 months followed by tempering at  $4\text{ }^{\circ}\text{C}$  for three weeks and aged at  $4\text{ }^{\circ}\text{C}$  for four weeks followed by frozen  
216 storage at  $-18\text{ }^{\circ}\text{C}$  for five months were acquired within a  $60\text{ }\mu\text{m} \times 60\text{ }\mu\text{m}$  area, resulting in a total of 400  
217 spectra per sample. Two cheese samples were analysed per storage treatment with representative FTIR  
218 intensity maps and average spectra presented.

219 After spectral data acquisition, atmospheric compensation was applied using OPUS 7.2 software suite (Bruker)  
220 to remove interference from atmospheric water vapour and carbon dioxide from the spectra. The resultant  
221 spectra were then pre-processed in CytoSpec v. 1.4.02 software (Cytospec Inc., Boston, MA, USA) using a  
222 noise reduction algorithm before conversion into second derivative spectra using the Savitzky-Golay (1964)  
223 algorithm. Hierarchical cluster analysis (HCA) was subsequently performed to sort the pre-processed second  
224 derivative spectra into five clusters based on their similarity in the two spectral ranges containing biological  
225 bands associated with lipids and proteins (i.e.  $3015\text{-}2810\text{ cm}^{-1}$  and  $1785\text{-}1110\text{ cm}^{-1}$ ). Here, only clusters  
226 containing spectra with high protein to fat ratio were selected for further analysis. The spectra were also  
227 processed by applying an extended multiplicative scatter correction (EMSC) algorithm based on the same

228 spectral ranges containing biological bands associated with lipids and proteins (i.e. 3015-2810  $\text{cm}^{-1}$  and 1785-  
229 1110  $\text{cm}^{-1}$ ). After that, principal component analysis (PCA) was conducted using The Unscrambler® 10.1  
230 software package (CAMO Software AS, Oslo, Norway), as described previously (Pax et al., 2019), based on the  
231 biological regions between 3000-2800  $\text{cm}^{-1}$  and 1800-1100  $\text{cm}^{-1}$ , as well as the amide I protein region alone  
232 (1700-1600  $\text{cm}^{-1}$ ).

## 233 **2.6 Statistical analysis**

234 Statistical analysis was completed with Minitab 17 statistical software (Minitab Inc., State College, PA, USA).  
235 All quantitative results were analysed using a “General Linear Model,” with significant changes due to time or  
236 the storage format being further analysed using Tukey’s paired comparison with a significance level of  $P =$   
237 0.05.

## 238 **3 Results and discussion**

### 239 **3.1 Heat transfer during freezing of Mozzarella cheese**

240 The temperature of the 5 kg Mozzarella block samples packed within a pallet, during blast chilling and  
241 freezing, was monitored to provide an estimate of the rate of heat transfer and length of time needed to cool  
242 and freeze 5 kg Mozzarella blocks under industrial conditions. In this study, the four selected 5 kg blocks took  
243 657-972 hours to reach  $-17\text{ }^{\circ}\text{C}$  from an original temperature of  $21\text{-}23\text{ }^{\circ}\text{C}$  (for further details see Supplementary  
244 Information). Once frozen, the cheese temperature remained relatively constant at  $-17\text{ }^{\circ}\text{C}$  for the duration of  
245 the storage period, with only small fluctuations of  $1\text{-}2\text{ }^{\circ}\text{C}$ , as occurs during industrial storage.

246 The time taken to freeze cheese may be defined as the length of time needed to cool from  $-1.1\text{ }^{\circ}\text{C}$  to  $-6.7\text{ }^{\circ}\text{C}$   
247 (Bertola et al., 1996; Diefes et al., 1993). Using this definition, the 5 kg Mozzarella cheese blocks took  $114 \pm 20$   
248 h to freeze under the industrial conditions applied here. This rate of freezing is at least 9 times slower than  
249 the equivalent rate of  $\sim 10$  h reported under laboratory conditions (Bertola et al., 1996), as shown in Table 1. It  
250 is also approximately eight times slower than the rate of cooling observed in a recent study where three  
251 different rates of cooling for Mozzarella cheese were examined (To et al., 2020), where the slowest freezing  
252 rate was  $0.6\text{ }^{\circ}\text{C h}^{-1}$  for a 2.5 kg block. Factors contributing to the slower heat transfer rate measured here

253 include the size of the cheese blocks (5 kg vs 1.5-2.5 kg in previous studies) and the packaging and the pallet  
254 configuration, which slows heat transfer relative to a single air-chilled block. Other factors include the freezer  
255 temperature (-18 °C), which results in a slower heat transfer than rapid freezing in liquid nitrogen (-196 °C),  
256 which may be employed at a laboratory scale (Oberg et al., 1992) and may be more relevant for other  
257 methods of freezing such as IQF. The cheese within the 5 kg blocks froze at  $-1.65 \pm 0.06$  °C, using a definition  
258 of the temperature at the start of the short plateau that occurs directly after supercooling (see inset Figure  
259 S2). This freezing temperature is similar to previous reports, which range from -0.5 °C to -1.7 °C for Mozzarella  
260 of a similar composition (Kuo & Gunasekaran, 2003; Ribero et al., 2007).

261 The extent of supercooling, defined as the difference between the freezing temperature and the lowest  
262 temperature reached before freezing, was 3 °C or less, similar to previous studies of Mozzarella cheese  
263 (Ribero et al., 2007). Shorter supercooling periods are reported to decrease ice crystal size (Cheng, Sun, Zhu,  
264 & Zhang, 2017) and may have led to the formation of smaller ice crystals here.

265 The four temperature probes placed within select 5 kg Mozzarella blocks indicate that while the slow rate of  
266 heat transfer was highly similar between 5 kg blocks, relative to other previous studies, there is some  
267 variability in cheese temperature between blocks as a result of block placement under industrial conditions.  
268 The box at the bottom of the pallet cooled fastest (green; Figure S1a) and box in the centre of the pallet  
269 cooled slowest (red; Figure S1a). Consequently, the time taken for freezing, i.e., for the 5 kg blocks to cool  
270 from -1.1 °C to -6.7 °C varied between 175 hours for the box at the bottom of the pallet to 252 hours for the  
271 box in the centre of the pallet, although all boxes reached a similar temperature of -12 °C by 300 hours.

272 At present there is no simple and effective method for predicting the time taken for food products, such as  
273 cheese, to freeze or thaw (Góral, Kluza, Spiess, & Kozłowicz, 2016). The data presented here on chilling,  
274 freezing and cooling may be useful, however, in the calculation of parameters describing heat transfer in  
275 cheese using a so-called inverse problem approach (Ramm, 2005).

### 276 **3.2 The effect of freezing and tempering on the microstructure of Mozzarella** 277 **cheese throughout storage**

278 The parallel alignment of fat and protein observed here by confocal laser scanning microscopy is characteristic  
279 of Mozzarella cheese (Figure 1) and was clearly visible in 5 kg block samples that had been frozen for either 1 ,  
280 3 or 6 months regardless of the length of tempering applied (Fig. 1e-g and i-k). This structure is similar to the  
281 structure observed in samples stored at 4 °C for only one month (Fig. 1a) but significantly different to the  
282 structure of the cheese aged at 4 °C for longer periods, where there was a loss of protein and fat alignment  
283 due to proteolysis (for example, Fig. 1c). The microstructure images therefore indicate that the structural  
284 alterations that normally occur due to proteolysis during refrigerated ageing (Fontecha et al., 1996) were  
285 prevented by freezing in the present study. The increased structural homogeneity that occurs within  
286 Mozzarella stored at 4 °C was particularly evident at six months here, similar to observations of structural  
287 rearrangement in cheese stored at 4 °C for shorter time periods (3-6 weeks) (Banville, Morin, Pouliot, &  
288 Britten, 2013; McMahon, Fife, & Oberg, 1999).

289 Importantly, the freezing conducted here did not appear to induce large cracks or other visible defects, a  
290 result confirmed by cryo-SEM of the samples frozen for six months (Fig. 1d, h, l). The absence of visible  
291 defects was potentially due to the slow rates of freezing and thawing applied. Pockets of fat globules aligned  
292 between protein were visible in 5 kg blocks stored at -18 °C, similar to confocal images, whereas the cheese  
293 blocks stored at 4 °C contained a more homogeneous distribution of protein. These refrigerated samples  
294 showed a greater susceptibility to artefacts which can be introduced by cryo-SEM sample preparation after six  
295 months of storage, including webbing or crystalline structures present within the protein network (see Fig. 1d,  
296 red dashed arrows). These potentially arise from the softer nature of these cheese blocks. There was some  
297 evidence of minor cracks in selected cheese samples that were stored frozen and tempered for one week (see  
298 Fig. 1h, white arrow), however, these cracks were not systematically observed across multiple samples.

299 The microstructural data suggest that the slow freezing rate of the industrial conditions applied here, where it  
300 takes 84-130 h to cool the sample from -1.1 °C to -6.7 °C, causes less product damage than the conditions  
301 used in laboratory experiments, where freezing induced damage to the cheese protein matrix was detected.

302 The cracks observed previously were 40  $\mu\text{m}$  to  $>100 \mu\text{m}$  in length and 2-5  $\mu\text{m}$  in width. Two studies used  
303 much faster freezing rates between 1.5 h and 4 h to cool from  $-1.1 \text{ }^\circ\text{C}$  to  $-6.7 \text{ }^\circ\text{C}$  (for further information see  
304 Table 1). Another study observed small cracks up to 10  $\mu\text{m}$  in length and 2-3  $\mu\text{m}$  in width (Ribero et al., 2009)  
305 but did not report the conditions or rates of heat transfer (Fontecha et al., 1996; Kuo & Gunasekaran, 2009;  
306 Ribero et al., 2009). It is worthy of mention that these past studies used SEM to evaluate  
307 structural damage, rather than the cryo-SEM employed here and this may be a further factor in the  
308 differences observed.

309 The structural damage observed on freezing was attributed to the formation of large ice crystals inducing  
310 mechanical stresses on the cheese matrix during freezing (Fontecha et al., 1996; Kuo & Gunasekaran, 2009).  
311 Although, it is possible that the cracks were caused by the contraction in overall cheese volume that can occur  
312 upon rapid cooling. Cracks of these scale, however, are unlikely to affect the functional properties and quality  
313 of commercially produced cheese (Ribero et al., 2009).

### 314 **3.3 The effect of freezing and tempering on proteolysis in Mozzarella cheese** 315 **during storage**

316 The effect of freezing and tempering on proteolysis within the 5 kg cheese blocks was examined by SDS-PAGE  
317 and RP-HPLC. While frozen storage is expected to halt biochemical changes such as proteolysis (Prados et al.,  
318 2006; Sharma, Su, Joshi, Roux, & Sathe, 2010), processes such as bacterial cell lysis may occur with freezing  
319 and can accelerate protein breakdown (Verdini et al., 2005).

320 Proteolysis was not enhanced by blast chilling and was arrested with frozen storage. The breakdown of  $\alpha$ -  
321 caseins and  $\beta$ -casein was instead determined predominantly by the length of time the samples spent at  $4 \text{ }^\circ\text{C}$   
322 (Fig. 2). Comparison between cheese treatments was found to be more meaningful when plotted by the time  
323 spent in the tempering process at  $4 \text{ }^\circ\text{C}$  (Fig. 2a2, a3, b2), rather than as a function of the length of frozen  
324 storage (see Figure S3). There was no significant difference ( $P > 0.05$ ) between samples stored at  $-18 \text{ }^\circ\text{C}$  for  
325 one, three or six months under these conditions, confirming that frozen storage arrested proteolytic  
326 breakdown. As expected, the concentration of  $\alpha$ - and  $\beta$ -caseins in control samples decreased with storage at  $4$   
327  $^\circ\text{C}$ , reducing significantly ( $P < 0.05$ ) from  $45 \pm 5\%$  to  $9 \pm 2\%$  for  $\alpha$ -caseins and from  $34 \pm 2\%$  to  $20 \pm 3\%$  for  $\beta$ -

328 casein, with 84% and 90% of these changes occurring within the first three months, respectively  
329 (Fig. 2a2-3).

330 Longer tempering induced changes in proteolysis. The concentration of  $\alpha$ -caseins was not significantly altered  
331 ( $P > 0.05$ ) with longer tempering, with  $\sim 45 \pm 4\%$  of  $\alpha$ -caseins remaining after one week of tempering or  $39 \pm$   
332  $5\%$  of  $\alpha$ -caseins remaining after three weeks of tempering (Fig. 2a2). However, the level of  $\beta$ -casein was  
333 significantly lowered ( $P < 0.05$ ) with longer tempering, with  $31 \pm 1\%$  of  $\beta$ -casein remaining after one week of  
334 tempering or  $27 \pm 2\%$  of  $\beta$ -casein remaining after three weeks of tempering (Fig. 2a3).

335 Ageing cheese samples prior to frozen storage led to the expected increase in proteolysis when compared to  
336 frozen samples without the ageing step. The level of  $\alpha$ -caseins was  $35 \pm 8\%$  for aged and frozen samples that  
337 were tempered for one week, compared to  $28 \pm 4\%$  for aged and frozen samples tempered for three weeks.  
338 Similarly, the  $\beta$ -casein concentration in aged and frozen samples tempered for one week was  $32 \pm 4\%$  and  $29$   
339  $\pm 6\%$  for cheese samples aged and frozen and tempered for three weeks.

340 The peptide profiles determined by HPLC analysis also confirmed that proteolysis was halted with frozen  
341 storage. Profiles extracted for cheese frozen for six months and then tempered for one or three weeks show  
342 significantly fewer peaks than cheese refrigerated for six months, with cheese that was aged and then frozen  
343 having a number and level of peaks in between the other two treatments (Fig. 2b1). These data are best  
344 illustrated as a function of time spent at  $4^\circ\text{C}$  (Fig. 2b2) rather than as a function of total time (see Figure S3b).  
345 The total peak area in the frozen and tempered samples was also similar ( $P > 0.05$ ) to what might be expected  
346 for cheese refrigerated for only a few weeks (Fig. 2b2), with a total area of  $17 \pm 1.0$  Au.min and  $18.6 \pm 0.6$   
347 Au.min, respectively, compared to  $16.6 \pm 0.7$  Au.min at four weeks for the refrigerated sample at the earliest  
348 measurement point. Again, the length of frozen storage (one, three or six months) did not appear to  
349 significantly impact proteolysis, as determined by the total peak area.

350 There was an approximately 1.7-fold increase in total peak area determined by HPLC over the six months of  
351 refrigerated storage (Fig. 2b2), while the decrease in  $\alpha$ -caseins for the same period was  $\sim 2.5$ -fold (Fig. 2a2).  
352 The literature typically reports an approximately two-fold increase in soluble nitrogen, an alternative measure

353 of proteolysis, after two to three months of storage (Costabel, Pauletti, & Hynes, 2007), similar to the data  
354 reported here.

355 Accelerated proteolysis, because of freezing and tempering, was not observed here. As expected, proteolysis  
356 appeared to occur during the time the samples spent at 4 °C, including tempering, with the length of time  
357 spent at 4 °C influencing casein breakdown, potentially enabling the effect of tempering to be predicted and  
358 optimised under these conditions. These data confirm that industrial freezing halts biochemical changes even  
359 when the rate of chilling and freezing is very slow. The data also show that proteolysis is halted when the  
360 samples are stored frozen for up to six months. Prior studies have reported an increase in the rate of  
361 proteolysis after frozen storage and these changes have been attributed to structural damage or to  
362 conformational changes in the protein network, where proteolysis was observed to increase after 13-15 days  
363 (Fontecha et al., 1994; Verdini et al., 2005). Here, the slower rate of chilling and freezing and the absence of  
364 structural damage observed (Fig. 1) by CLSM and cryo-SEM may have minimised any protein breakdown.

### 365 **3.4 Functionality of Mozzarella cheese during storage**

366 The process of freezing and the duration of frozen storage did not impact significantly on either meltability or  
367 stretchability, two functionality tests important for industry application. Quantitative methods were applied  
368 to assess functionality: the meltability of Mozzarella cheese was assessed by measuring the transition  
369 temperature, defined as the temperature at which cheese begins to flow as measured in a rheometer and the  
370 stretchability of Mozzarella cheese was assessed using the stretch length, defined as the maximum length that  
371 the cheese can extend under tensile load before the strands break.

372 The duration of tempering (one or three weeks) affected the meltability of Mozzarella cheese. The data are  
373 presented here as a function of time spent at 4 °C (Fig. 3), as the comparison is more meaningful than when  
374 plotted as a function of total time (Figure S4). Samples frozen and tempered for one week had a transition  
375 temperature of ~53 °C regardless of frozen storage time, whilst samples frozen and tempered for three weeks  
376 had a significantly lower ( $P < 0.05$ ) transition temperature of ~49 °C, similar to the transition temperature of  
377 48.7 °C measured for Mozzarella refrigerated at 4 °C for four weeks (Fig. 3a). This observation is consistent  
378 with proteolysis occurring predominantly during the time samples spent at 4 °C. As expected, the meltability

379 of the Mozzarella increased significantly ( $P < 0.05$ ) with longer storage at 4 °C, as shown by the decrease in  
380 transition temperature from 48.7 °C at one month to 41.5 °C at six months (Fig. 3a), correlating with the  
381 increased proteolysis that occurred in these samples (Fig. 2).

382 The stretchability was also affected by tempering duration. The stretch was long (40 cm) for samples  
383 tempered only one week. Longer tempering greatly increased the variability in the stretch length measured,  
384 making comparison with these samples more difficult, although the stretch length included a range similar to  
385 cheese refrigerated for an equivalent length of time (Fig. 3b). The stretch length was significantly lower ( $P <$   
386  $0.05$ ) for samples refrigerated for longer periods, measuring  $27 \pm 1$  cm for cheese refrigerated for one month  
387 and then  $10 \pm 2$  cm for cheese refrigerated for six months, again consistent with the greater proteolysis that  
388 occurred in these samples (Fig. 2).

389 The increase in proteolysis with longer tempering, as shown by the change in  $\beta$ -casein in Fig. 2a3, likely  
390 contributed to the significant changes observed in both transition temperature and stretchability, as protein  
391 networks with fewer intact proteins are expected to flow more easily at lower temperatures and to have  
392 reduced stretch under tensile load. The greater rehydration of the protein network during tempering is a  
393 further factor that could contribute to the observed changes. Freezing is proposed to dehydrate the protein  
394 network (Diefes et al., 1993), making proteins more compact and more strongly interactive (Diefes et al.,  
395 1993; Ribero et al., 2009). Tempering may allow the protein network time to hydrate, as the time spent at 4  
396 °C after frozen storage has been shown to reduce the more-mobile serum fraction to near 0 after 15 days,  
397 similar to the protein network hydration that occurs in Mozzarella cheese directly after manufacture at 4 °C,  
398 where proteins absorb serum (To et al., 2020) and the free water in this serum associates with the casein  
399 network (Kuo, Gunasekaran, Johnson, & Chen, 2001; Smith, Vogt, Seymour, Carr, & Codd, 2017). Changes to  
400 protein hydration will alter the size, shape and structure of the protein at a molecular scale, potentially  
401 altering the response of the protein network to heat, shear and tensile load. Further studies could seek to  
402 assess the impact of protein hydration on these properties, although it may be difficult to isolate and assess  
403 the impact of hydration independently of other factors in such a complex matrix.

404 A key observation in the present study is that tempering Mozzarella cheese for three weeks provides a  
405 functionality similar to that of unfrozen cheese stored for one month. Tempering for longer periods may also  
406 be responsible for the improvement in meltability and stretchability reported in other studies (Kuo &  
407 Gunasekaran, 2003; Oberg et al., 1992). Little systematic improvement in cheese meltability and stretchability  
408 was observed for Mozzarella cheese, however, when the duration of the ageing and tempering periods was  
409 varied in previous studies (Kuo & Gunasekaran, 2003).

410 Pizza bake tests are commonly employed as routine quality tests in industry and were conducted here to  
411 qualitatively assess cheese melt, colour, free oil and blistering and to allow comparison to the quantitative  
412 measures of meltability and stretchability (see Table S1) and translation to industry practice.

413 Both freezing and the duration of frozen storage influenced some measures of functionality in these tests.  
414 Freezing increased skinning, an undesirable trait where cheese can hold together and pull across the pizza  
415 surface; this was particularly evident in samples frozen for a month but reduced with longer frozen storage.

416 Tempering for three weeks improved several pizza bake properties compared to tempering for one week.  
417 Meltability increased for samples tempered for three weeks, defined as the visible loss of shred shape or  
418 identity on the pizza, which is a desirable trait. Cheese that was aged prior to freezing also had increased  
419 meltability compared to frozen samples tempered for one week. Tempering for three weeks also increased  
420 the diameter of the blisters formed in frozen samples to a qualitatively more acceptable level.

421 Cheese that had been aged at 4 °C prior to frozen storage maintained acceptable pizza bake properties, with  
422 similar acceptability overall to cheese that had been frozen and tempered for three weeks. The control cheese  
423 stored at 4 °C also retained acceptable melt and colour properties throughout the six months of refrigerated  
424 storage as expected, with only free oil and blistering appearing less acceptable after six months.

425 Several factors may influence the changes observed in pizza bake properties with freezing and tempering,  
426 although it should be noted that the mechanisms underlying changes in the traits described in the pizza bake  
427 tests are complex and not well understood. The changes induced by tempering are likely related to  
428 proteolysis, as discussed for melting as well as stretch length above. Proteolysis may alter the mobility of fat

429 in the cheese network, as many of the properties in the pizza bake tests relate to the behaviour of fat. The  
430 changes in protein hydration induced by freezing could also impact on skinning, as dehydration has also been  
431 observed to induce milk skin formation during drying (Kentish, Davidson, Hassan, & Bloore, 2005). The  
432 observations made here are also consistent with a previous study where the pizza bake performance was  
433 improved when frozen cheese was tempered for a longer period (35 days rather than 16 days; To et al., 2020)  
434 The ability to probe the structure of these proteins at a molecular scale within the cheese may provide further  
435 insight into the changes observed in these quantitative and qualitative measures of functionality.

### 436 **3.5 Synchrotron FTIR microspectroscopy of Mozzarella cheese**

437 S-FTIR microspectroscopy, used to assess the structure of protein within the Mozzarella cheese samples,  
438 indicated that protein structure was altered by the process of freezing and tempering conditions under the  
439 conditions examined here. Cheese samples stored at 4 °C or -18 °C for six months were assessed alongside  
440 cheese stored at -18 °C followed by tempering at 4 °C for three weeks and cheese that was aged for four  
441 weeks at 4 °C prior to -18 °C storage.

442 In all samples, S-FTIR spectra contained characteristic bands associated with the key components of  
443 Mozzarella cheese, including proteins, lipids and water (Fig. 4a). The bands in the range 3000-2800 cm<sup>-1</sup> are  
444 attributed to the  $\nu(\text{C-H})$  stretching vibrations of methyl (-CH<sub>3</sub>) and methylene (-CH<sub>2</sub>) groups within both  
445 proteins and lipids. The sharp  $\nu(\text{O-H})$  band at 3600-3100 cm<sup>-1</sup> represents the O-H bonding interactions of the  
446 small number of water molecules remaining within the dehydrated thin sections of cheese. At the lower  
447 wavenumber region, the peak at ~1750 cm<sup>-1</sup> is attributed to  $\nu(\text{C=O})$  stretching of lipid and fatty acid ester  
448 functional groups and can be used to represent total lipids (Vongsvivut et al., 2012). The pronounced bands at  
449 ~1650 and 1550 cm<sup>-1</sup> are assigned to the amide I and II modes of proteins respectively. The amide I (1700-  
450 1600 cm<sup>-1</sup>) band is commonly used to characterise protein secondary structure, as the vibrations are directly  
451 linked to the backbone conformation, with each frequency denoting a particular secondary structure (Yang,  
452 Yang, Kong, Dong, & Yu, 2015).

453 The amide I protein band was used here to uncover differences in protein conformation in Mozzarella cheese  
454 that underwent different storage conditions. The second derivative of the amide I peak (Fig. 4b) contained

455 three main peaks of varying intensities in all samples; at  $\sim 1650\text{ cm}^{-1}$  corresponding to  $\alpha$ -helical structures, at  
456  $\sim 1662\text{ cm}^{-1}$  corresponding to  $\beta$ -turn structures and at  $\sim 1639\text{ cm}^{-1}$  corresponding to  $\beta$ -sheet structures (Chen &  
457 Irudayaraj, 1998).

458 FTIR intensity maps of the amide I bands were generated to visualise the distribution of  $\beta$ -turn,  $\alpha$ -helix and  $\beta$ -  
459 sheet conformations in the Mozzarella cheese samples (Fig. 4c). A higher intensity of  $\alpha$ -helical conformation  
460 was observed qualitatively in cheese stored at  $4\text{ }^{\circ}\text{C}$  for six months, as well as  $\beta$ -turn and  $\beta$ -sheet  
461 conformations compared to other samples.

462 Principal component analysis (PCA) applied to the biological regions at  $3000\text{-}2800\text{ cm}^{-1}$  and  $1800\text{-}1100\text{ cm}^{-1}$   
463 uncovered differences in the molecular structure of Mozzarella cheese that underwent different storage  
464 conditions. Cheese samples that were aged and then frozen were clearly separated from both frozen and  
465 refrigerated samples along the PC1 axis (Fig. 5a), primarily due to variations in the lipid and protein peaks  
466 occurring between  $3000\text{-}2800\text{ cm}^{-1}$ , and also  $\alpha$ -helical conformations within amide I protein at  $1653\text{ cm}^{-1}$  and  
467 amide II protein at  $1545\text{ cm}^{-1}$  (Fig. 5b). Along the PC2 axis, which represents 21% of the variation, frozen  
468 samples were separated from refrigerated and from both frozen and tempered and aged and frozen samples  
469 due to lipid and protein peaks between  $3000\text{-}2800\text{ cm}^{-1}$  and  $1760\text{ cm}^{-1}$  and random coil structures at  $1640\text{ cm}^{-1}$ .  
470 Similar separation was observed when only the amide I region ( $1700\text{-}1600\text{ cm}^{-1}$ ) was used for the PCA, with  
471 the key difference being that cheese stored at  $4\text{ }^{\circ}\text{C}$  for six months was not differentiated from cheese frozen  
472 and tempered at  $4\text{ }^{\circ}\text{C}$  for three weeks (Fig. 5c). Here, the difference between cheese that had spent time at  $4$   
473  $^{\circ}\text{C}$  and frozen stored cheese was due to  $\beta$ -sheet and  $\beta$ -turn structures, which accounted for 5% of the  
474 variation.

475 These data are significant, indicating that at least partial recovery of protein structures is possible in frozen  
476 and tempered samples so that they are indistinguishable from samples stored at  $4\text{ }^{\circ}\text{C}$  in the amide I region by  
477 PCA. This recovery is consistent with prior observations that tempering partially restored cheese properties  
478 (Kuo & Gunasekaran, 2003). The recovery of cheese during refrigerated tempering appears to arise from a  
479 decrease in  $\beta$ -sheet and  $\beta$ -turn structure induced during frozen storage.  $\beta$ -sheet and  $\alpha$ -helical protein  
480 structure have previously been shown to correlate to food texture in aged cheese or in meat. Specifically, the

481  $\alpha$ -helical content of semi-hard ewe's milk cheese was reported to decrease and  $\beta$ -sheet structure  
482 increase with age, suggesting these structural changes correlate with a softer overall texture (Fontecha,  
483 Bellanato, & Juarez, 1993). A tougher or firmer texture was also found in meat muscle with higher levels of  $\alpha$ -  
484 helical protein conformation (Warner et al., 2022). In this case, however, the structural changes appeared  
485 reversible.

486 Ageing cheese samples prior to freezing also altered the secondary structure in samples that were then frozen  
487 and thawed (Fig. 5c), resulting in samples which were different to those tempered after frozen storage. This  
488 observation provides new support for the widely studied structural rearrangement that occurs in *pasta filata*  
489 Mozzarella cheese during the initial weeks following manufacture (Kindstedt et al., 2004; McMahon et al.,  
490 1999; Smith et al., 2017). Prior work has generally observed that any combination of ageing and tempering  
491 results in a cheese with acceptable functionality and texture (Kuo & Gunasekaran, 2003). The FTIR  
492 microspectroscopic techniques employed here, however, suggest that tempering after frozen storage is more  
493 effective at restoring protein structures. The extent of proteolysis was similar in cheese samples aged for four  
494 weeks or tempered for three weeks. These measures indicate that the altered protein structure observed by  
495 S-FTIR microspectroscopy are able to distinguish between cheese that has undergone ageing prior to freezing  
496 and cheese that has been tempered after frozen storage.

#### 497 **4 Conclusions**

498 Mozzarella cheese blocks (5 kg) were blast chilled and froze slowly over ~114 hours. Under these industrial  
499 conditions and in combination with a tempering step of one or three weeks, frozen storage did not lead to  
500 cracks or visible changes to the protein network. Ageing cheese for four weeks prior to frozen storage also did  
501 not lead to protein network damage. The duration of frozen storage had little impact on the cheese  
502 microstructure, proteolysis and most measures of functionality (transition temperature and meltability),  
503 indicating that cheese can be frozen for extended periods of up to six months. Tempering Mozzarella cheese  
504 for three weeks led to functional properties similar to an unfrozen cheese aged for a month; improving  
505 meltability, stretchability and pizza bake properties, potentially due to increased proteolysis and greater  
506 protein rehydration. The length of tempering may therefore be used to predict or adjust casein breakdown

507 and optimise functionality after frozen storage. The protein secondary structures were different for cheese  
508 that underwent different treatments, highlighting the discriminatory ability of S-FTIR microspectroscopy to  
509 separate samples that was not possible with other techniques. This study shows the importance of studying  
510 freezing and thawing using industrially relevant conditions, which may provide initial data useful for modelling  
511 heat transfer during chilling and freezing. There is potential to also further extend this research to consider  
512 changes to the fat within Mozzarella cheese on freezing.

## 513 **Acknowledgements**

514 This research was supported by The Australian Research Council (ARC) Industrial Transformation Research  
515 Program (ITRP) funding scheme (Project Number: IH120100005). The ARC Dairy Innovation Hub is a  
516 collaboration between The University of Melbourne, The University of Queensland and Dairy Innovation  
517 Australia Ltd. We thank the Advanced Microscopy Facility and Biological Optical Microscopy Platform at The  
518 Bio21 Molecular Science & Biotechnology Institute and The Particulate Fluids Processing Centre for access to  
519 equipment. S-FTIR data collection was conducted at the IRM beamline at the Australian Synchrotron, part of  
520 ANSTO.

## 521 **Author contributions**

522 A. Pax: conceptualisation, methodology, investigation, formal analysis, data curation, writing- original draft,  
523 visualisation

524 L. Ong: investigation, methodology, writing- review & editing

525 R. Pax: visualisation, formal analysis, writing- review & editing

526 J. Vongsvivut: investigation, methodology, validation, writing- review & editing

527 M. Tobin: resources, methodology, writing- review & editing

528 S. Kentish: validation, writing- review & editing, supervision

529 S. Gras: conceptualisation, resources, writing- review & editing, supervision, project administration, funding  
530 acquisition

### 531 **Conflict of interest**

532 The authors declare no conflict of interest.

### 533 **References**

534 AOAC. (2002). *Association of official analytical Chemists: Official methods of analysis 989.04-2000* (18th ed.).  
535 Gaithersburg, MD, USA: AOAC International.

536 Banville, V., Morin, P., Pouliot, Y., & Britten, M. (2013). Physical properties of pizza Mozzarella cheese  
537 manufactured under different cheese-making conditions. *Journal of Dairy Science*, *96*(8), 4804–4815.  
538 <https://doi.org/10.3168/jds.2012-6314>

539 Bertola, N. C., Califano, A. N., Bevilacqua, A. E., & Zaritzky, N. E. (1996). Textural Changes and Proteolysis of  
540 Low-Moisture Mozzarella Cheese Frozen under Various Conditions. *LWT - Food Science and Technology*,  
541 *29*(5–6), 470–474. <https://doi.org/10.1006/fstl.1996.0072>

542 Chen, M., & Irudayaraj, J. (1998). Sampling Technique for Cheese Analysis by FTIR Spectroscopy. *Journal of*  
543 *Food Science*, *63*(1), 96–99. <https://doi.org/10.1111/j.1365-2621.1998.tb15684.x>

544 Cheng, L., Sun, D. W., Zhu, Z., & Zhang, Z. (2017). Emerging techniques for assisting and accelerating food  
545 freezing processes: A review of recent research progresses. *Critical Reviews in Food Science and*  
546 *Nutrition*, *57*(4), 769–781. <https://doi.org/10.1080/10408398.2015.1004569>

547 Costabel, L., Pauletti, M. S., & Hynes, E. (2007). Proteolysis in Mozzarella cheeses manufactured by different  
548 industrial processes. *Journal of Dairy Science*, *90*(5), 2103–2112. <https://doi.org/10.3168/jds.2006-795>

549 Coultate, T. P. (2009). *Food: the chemistry of its components* (5th edn). London: Royal Society of Chemistry.

550 Diefes, H. A., Rizvi, S. S. H., & Bartsch, J. A. (1993). Rheological behavior of frozen and thawed low-moisture,  
551 part-skim Mozzarella cheese. *Journal of Food Science*, *58*(4), 764–769.

- 552 Fontecha, J., Bellanato, J., & Juarez, M. (1993). Infrared and Raman Spectroscopic Study of Casein in Cheese:  
553 Effect of Freezing and Frozen Storage. *Journal of Dairy Science*, 76(11), 3303–3309.  
554 [https://doi.org/10.3168/jds.S0022-0302\(93\)77667-5](https://doi.org/10.3168/jds.S0022-0302(93)77667-5)
- 555 Fontecha, J., Kaláb, M., Medina, J., Peláez, C., & Juárez, M. (1996). Effects of freezing and frozen storage on  
556 the microstructure and texture of ewe's milk cheese. *Zeitschrift Für Lebensmittel-Untersuchung Und*  
557 *Forschung*, 203(3), 245–251. <https://doi.org/10.1007/BF01192872>
- 558 Fontecha, J., Peláez, C., Juárez, M., & Martín-Hernández, M. C. (1994). Effect of freezing and frozen storage on  
559 the physicochemical, organoleptic and microbiological characteristics of a semi-hard ewes' milk cheese.  
560 *Journal of Dairy Research*, 61(01), 133–142.
- 561 Góral, D., Kluza, F., Spiess, W. E. L., & Kozłowicz, K. (2016). Review of thawing time prediction models  
562 depending on process conditions and product characteristics. *Food Technology and Biotechnology*, 54(1),  
563 3–12. <https://doi.org/10.17113/ftb.54.01.16.4108>
- 564 IDF. (1982). *Determination of the total solids content (cheese and processed cheese)*. International standard  
565 4A. Brussels, Belgium: International Dairy Federation.
- 566 IDF. (1988). *Cheese and processed cheese: determination of chloride content (potentiometric titration*  
567 *method)*. International standard 88. Brussels, Belgium: International Dairy Federation.
- 568 IDF. (1993). *Milk: determination of the nitrogen content (Kjeldahl method) and calculation of crude protein*  
569 *content*. International standard 20B. Brussels, Belgium: International Dairy Federation.
- 570 Kentish, S., Davidson, M., Hassan, H., & Bloore, C. (2005). Milk skin formation during drying. *Chemical*  
571 *Engineering Science*, 60(3), 635–646. <https://doi.org/10.1016/j.ces.2004.08.033>
- 572 Kindstedt, P. S., Carić, M., & Milanović, S. (2004). Pasta-filata cheeses. In P. F. Fox, P. L. H. McSweeney, T. M.  
573 Cogan, & T. P. Guinee (Eds.), *Cheese: Chemistry, Physics and Microbiology* (3rd edn, Vol. 2, pp. 251–277).  
574 [https://doi.org/10.1016/S1874-558X\(04\)80047-2](https://doi.org/10.1016/S1874-558X(04)80047-2)
- 575 Kuo, M. I., & Gunasekaran, S. (2003). Effect of frozen storage on physical properties of pasta filata and

576 nonpasta filata Mozzarella cheeses. *Journal of Dairy Science*, 86(4), 1108–1117.  
577 [https://doi.org/10.3168/jds.S0022-0302\(03\)73693-5](https://doi.org/10.3168/jds.S0022-0302(03)73693-5)

578 Kuo, M. I., & Gunasekaran, S. (2009). Effect of freezing and frozen storage on microstructure of Mozzarella  
579 and pizza cheeses. *LWT - Food Science and Technology*, 42(1), 9–16.  
580 <https://doi.org/10.1016/j.lwt.2008.07.003>

581 Kuo, M. I., Gunasekaran, S., Johnson, M., & Chen, C. (2001). Nuclear magnetic resonance study of water  
582 mobility in pasta filata and non-pasta filata mozzarella. *Journal of Dairy Science*, 84(9), 1950–1958.  
583 [https://doi.org/10.3168/jds.S0022-0302\(01\)74637-1](https://doi.org/10.3168/jds.S0022-0302(01)74637-1)

584 Ma, X., James, B., Balaban, M. O., Zhang, L., & Emanuelsson-Patterson, E. A. C. (2013). Quantifying blistering  
585 and browning properties of Mozzarella cheese. Part I: Cheese made with different starter cultures. *Food*  
586 *Research International*, 54(1), 912–916. <https://doi.org/10.1016/j.foodres.2013.06.007>

587 McMahon, D. J., Fife, R. L., & Oberg, C. J. (1999). Water partitioning in Mozzarella cheese and its relationship  
588 to cheese meltability. *Journal of Dairy Science*, 82(7), 1361–1369. [https://doi.org/10.3168/jds.S0022-](https://doi.org/10.3168/jds.S0022-0302(99)75361-0)  
589 [0302\(99\)75361-0](https://doi.org/10.3168/jds.S0022-0302(99)75361-0)

590 Oberg, C. J., Merrill, R. K., Brown, R. J., & Richardson, G. H. (1992). Effects of freezing, thawing, and shredding  
591 on low moisture, part-skim Mozzarella cheese. *Journal of Dairy Science*, 75(5), 1161–1166.  
592 [https://doi.org/10.3168/jds.S0022-0302\(92\)77862-X](https://doi.org/10.3168/jds.S0022-0302(92)77862-X)

593 Ong, L., Dagastine, R. R., Kentish, S. E., & Gras, S. L. (2011). Microstructure of milk gel and cheese curd  
594 observed using cryo scanning electron microscopy and confocal microscopy. *LWT - Food Science and*  
595 *Technology*, 44(5), 1291–1302. <https://doi.org/10.1016/j.lwt.2010.12.026>

596 Ong, L., Henriksson, A., & Shah, N. P. (2006). Development of probiotic Cheddar cheese containing  
597 *Lactobacillus acidophilus*, *Lb. casei*, *Lb. paracasei* and *Bifidobacterium* spp. and the influence of these  
598 bacteria on proteolytic patterns and production of organic acid. *International Dairy Journal*, 16(5), 446–  
599 456. <https://doi.org/10.1016/j.idairyj.2005.05.008>

600 Pax, A. P., Ong, L., Kentish, S. E., & Gras, S. L. (2021). Effects of shredding on the functionality, microstructure  
601 and proteolysis of low-moisture mozzarella cheese. *International Dairy Journal*, *117*, 104979.  
602 <https://doi.org/10.1016/j.idairyj.2021.104979>

603 Pax, A. P., Ong, L., Vongsvivut, J., Tobin, M. J., Kentish, S. E., & Gras, S. L. (2019). The characterisation of  
604 Mozzarella cheese microstructure using high resolution synchrotron transmission and ATR-FTIR  
605 microspectroscopy. *Food Chemistry*, *291*(July 2018), 214–222.  
606 <https://doi.org/10.1016/j.foodchem.2019.04.016>

607 Prados, F., Pino, A., Rincón, F., Vioque, M., & Fernández-Salguero, J. (2006). Influence of the frozen storage on  
608 some characteristics of ripened Manchego-type cheese manufactured with a powdered vegetable  
609 coagulant and rennet. *Food Chemistry*, *95*(4), 677–682. <https://doi.org/10.1016/j.foodchem.2005.06.044>

610 Ramm, A. G. (2005). *Inverse problems: mathematical and analytical techniques with applications to*  
611 *engineering*. Springer Science: New York. <https://doi.org/10.1007/b100958>

612 Reid, D. S., & Yan, H. (2004). Rheological, melting and microstructural properties of Cheddar and Mozzarella  
613 cheeses affected by different freezing methods. *Journal of Food Quality*, *27*(6), 436–458.  
614 <https://doi.org/10.1111/j.1745-4557.2004.00685.x>

615 Ribero, G. G., Rubiolo, A. C., & Zorrilla, S. E. (2007). Initial freezing point of Mozzarella cheese. *Journal of Food*  
616 *Engineering*, *81*(1), 157–161. <https://doi.org/10.1016/j.jfoodeng.2006.10.017>

617 Ribero, G. G., Rubiolo, A. C., & Zorrilla, S. E. (2009). Microstructure of Mozzarella cheese as affected by the  
618 immersion freezing in NaCl solutions and by the frozen storage. *Journal of Food Engineering*, *91*(4), 516–  
619 520. <https://doi.org/10.1016/j.jfoodeng.2008.09.029>

620 Savitzky, A., & Golay, M. J. E. (1964). Smoothing and Differentiation of Data by Simplified Least Squares  
621 Procedures. *Analytical Chemistry*, *36*(8), 1627–1639. <https://doi.org/10.1021/ac60214a047>

622 Sharma, G. M., Su, M., Joshi, A. U., Roux, K. H., & Sathe, S. K. (2010). Functional properties of select edible  
623 oilseed proteins. *Journal of Agricultural and Food Chemistry*, *58*(9), 5457–5464.

624 <https://doi.org/10.1021/jf1002446>

625 Smith, J. R., Vogt, S. J., Seymour, J. D., Carr, A. J., & Codd, S. L. (2017). Probing water migration in Mozzarella  
626 cheese during maturation and heating utilizing magnetic resonance techniques. *Journal of Food*  
627 *Engineering*, 198, 1–6. <https://doi.org/10.1016/j.jfoodeng.2016.11.010>

628 Stonehouse, G. G., & Evans, J. A. (2015). The use of supercooling for fresh foods: A review. *Journal of Food*  
629 *Engineering*, 148, 74–79. <https://doi.org/10.1016/j.jfoodeng.2014.08.007>

630 To, C. M., Vermeir, L., Reby, F., Kerkaert, B., Van der Meeren, P., & Guinee, T. P. (2020). Impact of freezing on  
631 the physicochemical and functional properties of low-moisture part-skim mozzarella. *International*  
632 *Dairy Journal*, 106, 104704. <https://doi.org/10.1016/j.idairyj.2020.104704>

633 Verdini, R. A., Zorrilla, S. E., & Rubiolo, A. C. (2005). Effects of the freezing process on proteolysis during the  
634 ripening of Port Salut Argentino cheeses. *International Dairy Journal*, 15(4), 363–370.  
635 <https://doi.org/10.1016/j.idairyj.2004.08.002>

636 Vongsivut, J., Heraud, P., Zhang, W., Kralovec, J. A., McNaughton, D., & Barrow, C. J. (2012). Quantitative  
637 determination of fatty acid compositions in micro-encapsulated fish-oil supplements using Fourier  
638 transform infrared (FTIR) spectroscopy. *Food Chemistry*, 135(2), 603–609.  
639 <https://doi.org/10.1016/j.foodchem.2012.05.012>

640 Warner, R. D., Wheeler, T. L., Ha, M., Li, X., Bekhit, A. E. D., Morton, J., ... Zhang, W. (2022). Meat tenderness:  
641 advances in biology, biochemistry, molecular mechanisms and new technologies. *Meat Science*, Vol. 185.  
642 <https://doi.org/10.1016/j.meatsci.2021.108657>

643 Yang, H., Yang, S., Kong, J., Dong, A., & Yu, S. (2015). Obtaining information about protein secondary  
644 structures in aqueous solution using Fourier transform IR spectroscopy. *Nature Protocols*, 10(3), 382–  
645 396. <https://doi.org/10.1038/nprot.2015.024>

646

**Table 1: Rates of heat transfer and conditions used to freeze cheese.**

<b>Cheese type</b>	<b>Freezing rate*</b>	<b>Time taken from -1.1 °C to -6.7 °C (h)</b>	<b>Calculated rate of linear heat transfer from -1.1 °C to -6.7 °C (°C/ h)**</b>	<b>Cheese block size</b>	<b>Cheese block weight (kg)</b>	<b>Freezer conditions</b>	<b>Reference</b>
<b>Low-moisture Mozzarella</b>	<b>Very slow</b>	<b>84-130</b>	<b>0.07 – 0.04</b>	<b>35 x 11.5 x 11 cm</b>	<b>5</b>	<b>Freezer at -18 °C</b>	<b>Current study</b>
Low-moisture Mozzarella	Slow	3.5	1.6	5 x 10 x 7 cm	1.5	Still air at -21 °C	(Kuo and Gunasekaran, 2003)
Low-moisture Mozzarella	Slow	2.3	2.4	7 x 30 cm cylinders	2.5	Blast freezer at -30 °C	(Diefes et al., 1993)
Low-moisture Mozzarella	Slow	10	0.6	28 x 10 x 10 cm	n.a.	Freezer at -20 °C	(Bertola et al., 1996)
Low-moisture Mozzarella	Fast	0.22	26	28 x 10 x 10 cm	n.a.	Ethylene glycol bath at -20 °C	(Bertola et al., 1996)
Semi-hard ewe's milk	Slow	1.5	3.7	10 x 21 cm cylinders	3	Plate freezer at -35 °C	(Fontecha et al., 1996)
Semi-hard ewe's milk	Fast	0.45	12	10 x 21 cm cylinders	3	Liquid nitrogen cooled chest freezer at -80 °C	(Fontecha et al., 1996)
Low-moisture Mozzarella	Slow	9.3***	0.6	28 x 10 x 8 cm	2.5	Freezer at -20 °C	(To et al. 2020)
Low-moisture Mozzarella	Slow	2.8***	2	28 x 10 x 8 cm	2.5	Freezer at -40 °C	(To et al. 2020)
Low-moisture Mozzarella	Fast	0.7***	8	28 x 10 x 8 cm	2.5	Freezer at -40 °C	(To et al. 2020)

648 \* Where very slow is defined as >10 h, slow is defined as 2-10 h and fast is defined as <2 h from -1.1 °C to -6.7 °C.

649 \*\* Calculated using a simple linear approximation

650 \*\*\* Time taken calculated from the freezing rates of 0.6, 2 and 8 °C/ h provided in To et al. (2020).

651 **Figure captions**

652 Figure 1: 3D confocal and cryo-SEM micrographs of the microstructure of Mozzarella cheeses stored under  
653 three conditions: 4 °C (row 1; a-d), -18 °C and then tempered at 4 °C for one week (row 2; e-h) or -18 °C and  
654 then tempered at 4 °C for three weeks (row 3; i-l). Samples were stored for different lengths of time prior to  
655 analysis and were examined after one, three or six months of storage by confocal microscopy (columns 1-3  
656 respectively) or after six months by cryo-SEM (column 4). Protein appears green and fat has been stained red  
657 in the confocal images. The scale bars for both confocal and cryo-SEM micrographs are 20 µm in length. In the  
658 cryo-SEM images, the red dashed arrows indicate webbing in the protein matrix and the white arrow indicates  
659 small potential cracks in the cheese microstructure.

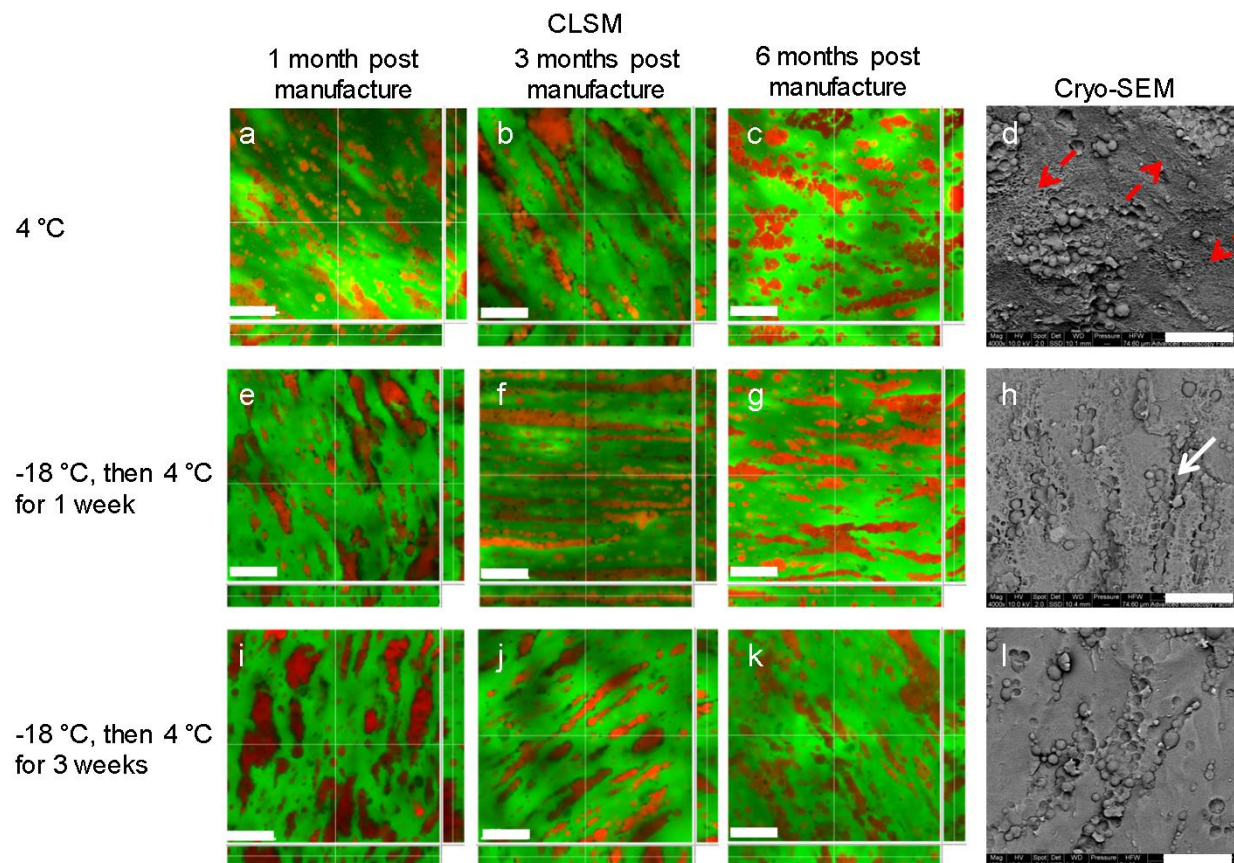
660 Figure 2: Image of the SDS-PAGE profile (a1) and the change in casein content as a function of time spent at 4  
661 °C determined by image analysis of the SDS-PAGE bands for α-caseins (a2) and β-casein (a3). The HPLC profile  
662 of water-soluble peptide extracts at 214 nm obtained after six months of storage (b1) and the changes to the  
663 total peak area measured by HPLC as a function of the total storage time at 4 °C (b1). Mozzarella samples  
664 were stored at 4 °C (◆), stored at -18 °C and tempered for one week (■), stored at -18 °C and tempered for  
665 three weeks (△), aged at 4 °C for four weeks, stored at -18 °C and tempered for one week (●) or aged at 4 °C  
666 for four weeks, stored at -18 °C and tempered for three weeks (○). Storage was for one, three or six months.  
667 Error bars are ± the standard deviation of three samples. Data points in (a2), (a3) and (b2) include samples  
668 stored for one, three and six months; for cheese stored at -18 °C this data is plotted at one and three weeks  
669 on the x-axis, corresponding to the total time these samples spent at 4 °C.

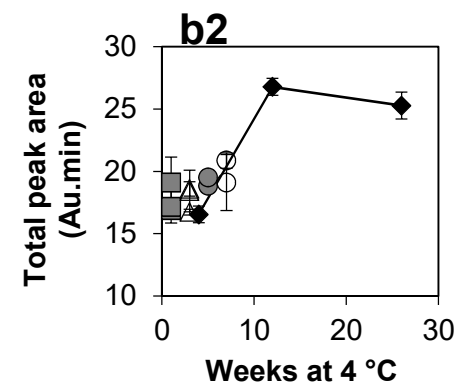
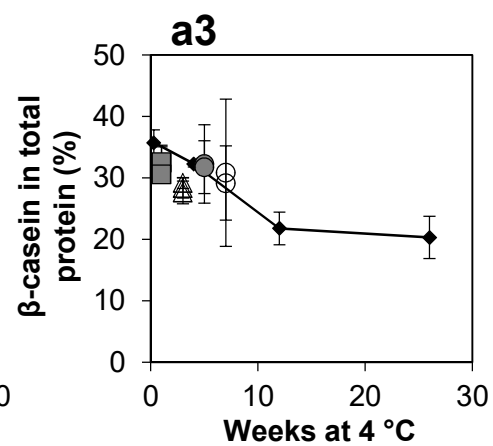
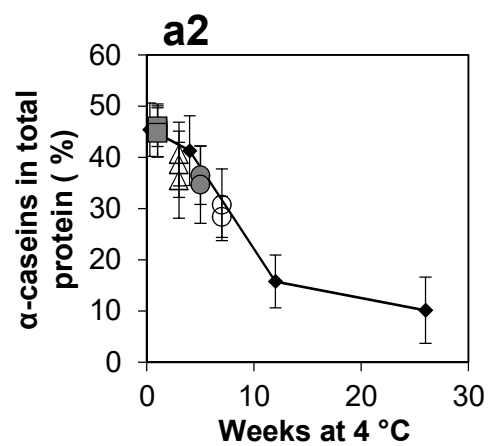
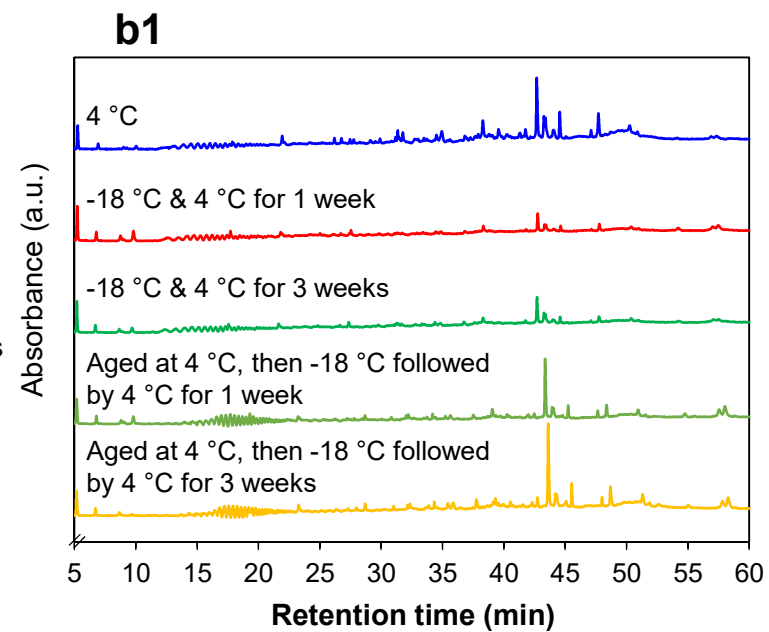
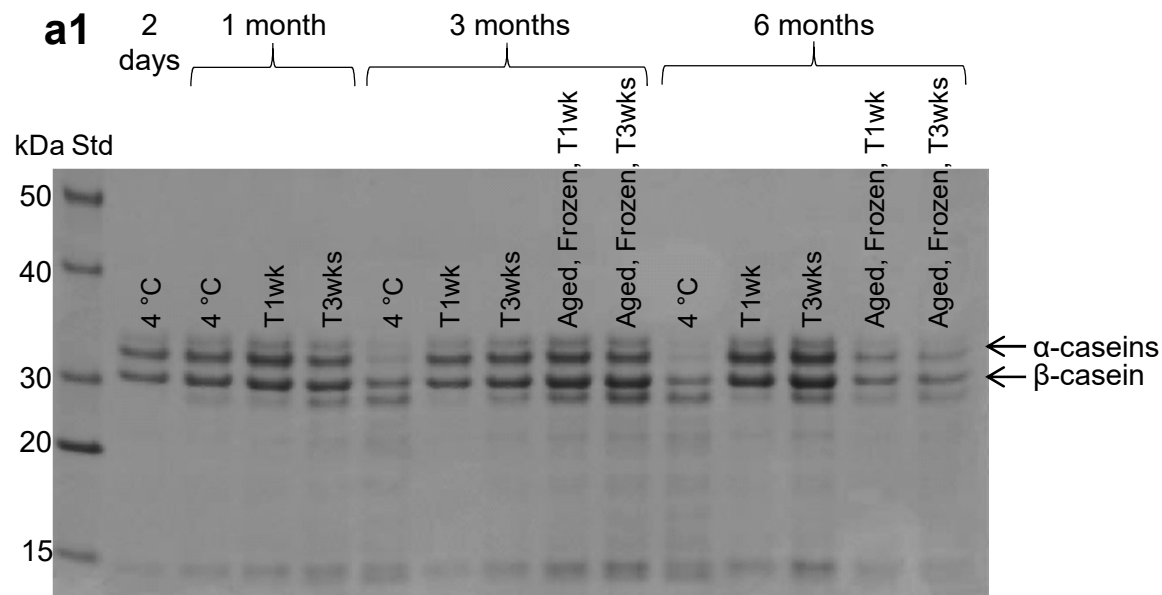
670 Figure 3: The meltability and stretchability of stored Mozzarella samples. (a) Meltability was determined from  
671 the transition temperature. (b) Stretchability was determined from the stretch length. Mozzarella samples  
672 were stored under three conditions: 4 °C (◆), -18 °C and tempered for one week (■), -18 °C and tempered  
673 for three weeks (△) for one, three and six months. Data points are the mean ± the standard deviation of  
674 three replicates and include data points for samples stored for one, three and six months; for cheese stored at  
675 -18 °C this data is plotted at one and three weeks on the x axis, corresponding to the total time these samples  
676 spent at 4 °C.

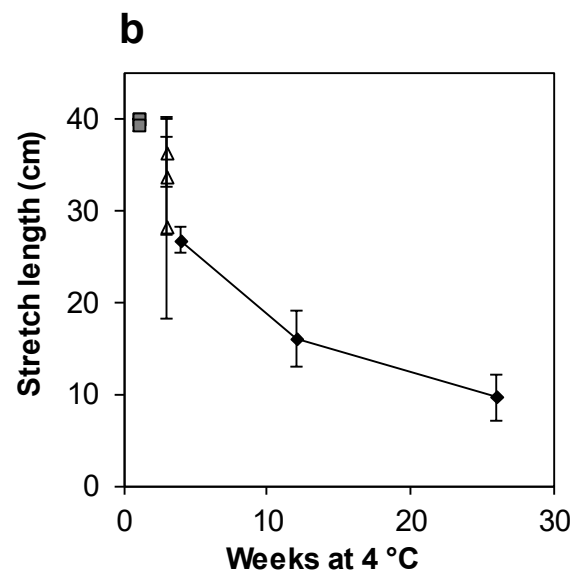
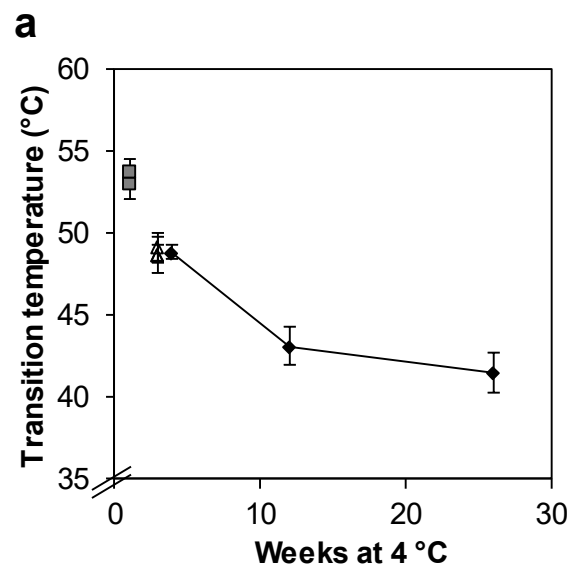
677 Figure 4: S-FTIR analysis showing the average normalised spectra (a) as determined by HCA. The dashed box in  
678 (a) shows the amide 1 region ( $1700-1600\text{ cm}^{-1}$ ) displayed in the second derivative form from areas of high  
679 protein in (b). FTIR intensity maps show the spatial distribution of protein secondary structures  $\beta$ -turn,  $\alpha$ -helix  
680 and random coil for the different Mozzarella cheese storage treatments (c); storage at  $4\text{ }^{\circ}\text{C}$  for six months,  
681 storage at  $-18\text{ }^{\circ}\text{C}$  for six months, storage at  $-18\text{ }^{\circ}\text{C}$  for six months followed by  $4\text{ }^{\circ}\text{C}$  for three weeks or aged at  $4$   
682  $^{\circ}\text{C}$  for four weeks followed by storage at  $-18\text{ }^{\circ}\text{C}$  for five months. Dark red indicates high structure  
683 concentration and dark blue indicates low structure concentration, as signified by the colour intensity scale on  
684 the right. The scale bars are  $20\text{ }\mu\text{m}$  in length. Representative images are shown for each cheese storage  
685 treatment.

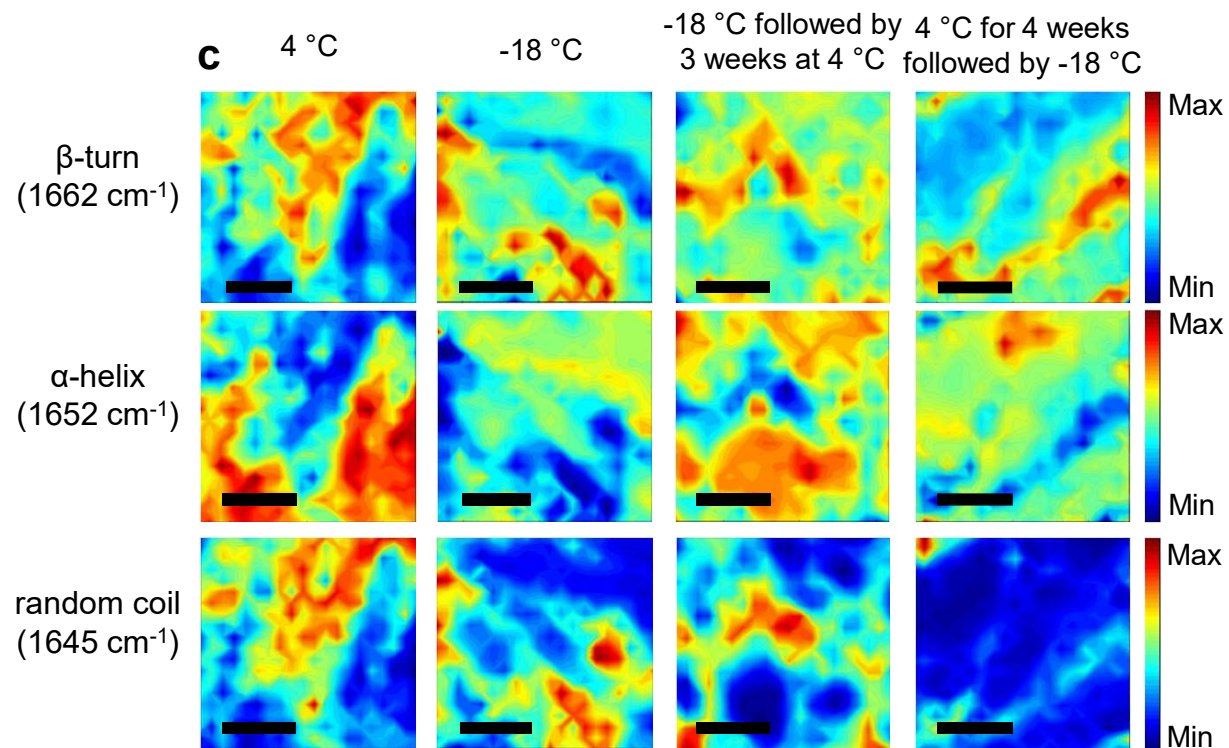
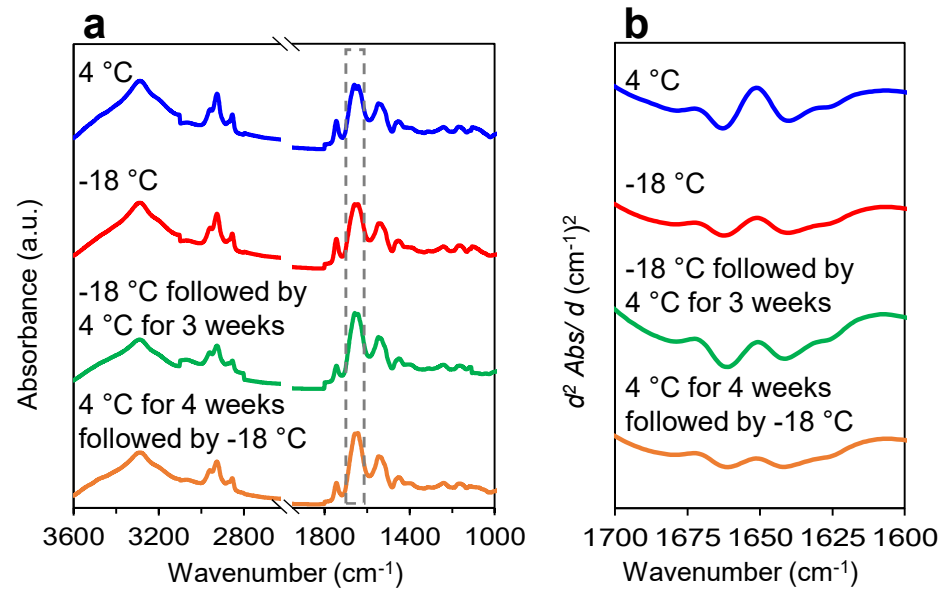
686 Figure 5: Principal component analysis (PCA) scores (a, c) and loadings (b, d) plots of second derivative high  
687 protein spectra in the biological regions between  $3000-2800\text{ cm}^{-1}$  and  $1800-1100\text{ cm}^{-1}$  (a, b) and the amide I  
688 protein region  $1700-1600\text{ cm}^{-1}$  (c, d) for cheese stored at  $4\text{ }^{\circ}\text{C}$  for six months (blue),  $-18\text{ }^{\circ}\text{C}$  for six months (red),  
689  $4\text{ }^{\circ}\text{C}$  for four weeks then  $-18\text{ }^{\circ}\text{C}$  for five months (orange) and  $-18\text{ }^{\circ}\text{C}$  for six months and  $4\text{ }^{\circ}\text{C}$  for three weeks  
690 (green) samples ( $n=2$ ).

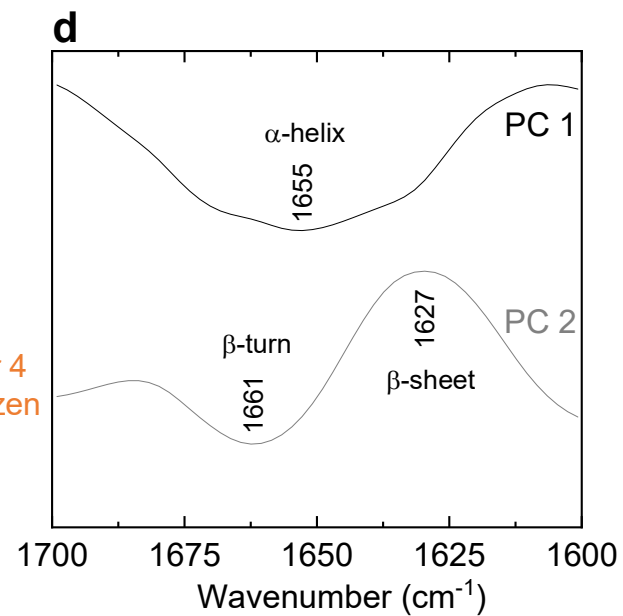
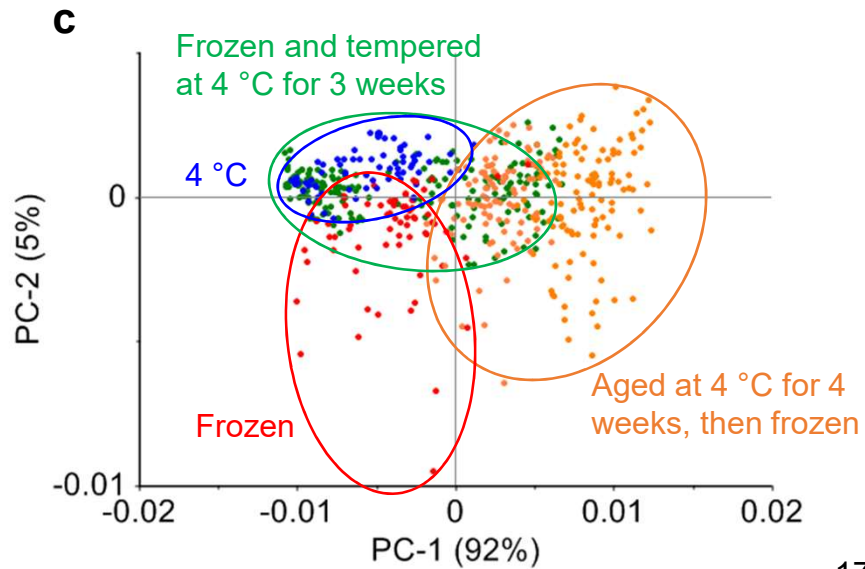
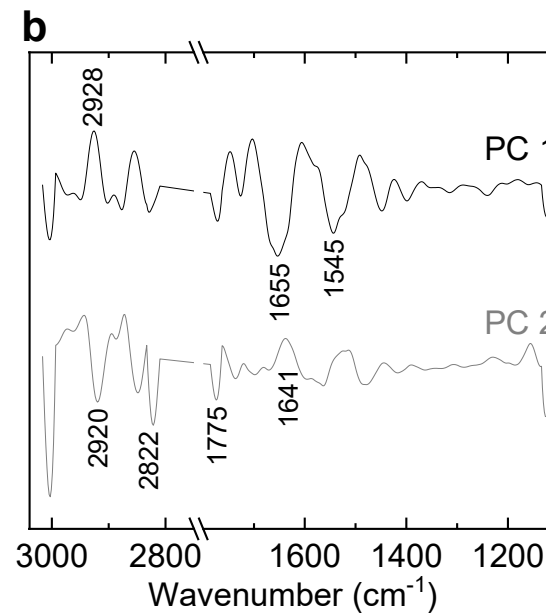
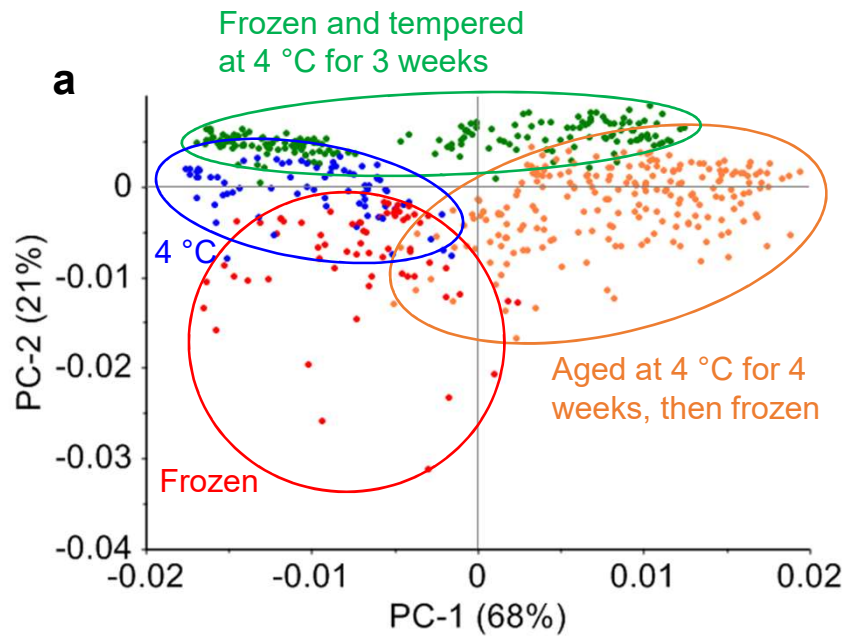
691











# Industrial freezing and tempering for optimal functional properties in thawed Mozzarella cheese

Anita P. Pax<sup>a,b</sup>, Lydia Ong<sup>a,b</sup>, Randolph A. Pax<sup>c</sup>, Jitraporn Vongsvivut<sup>d</sup>, Mark J. Tobin<sup>d</sup>, Sandra E. Kentish<sup>a</sup>, Sally L. Gras<sup>\*a,b</sup>

## Pallet configuration and temperature probe locations

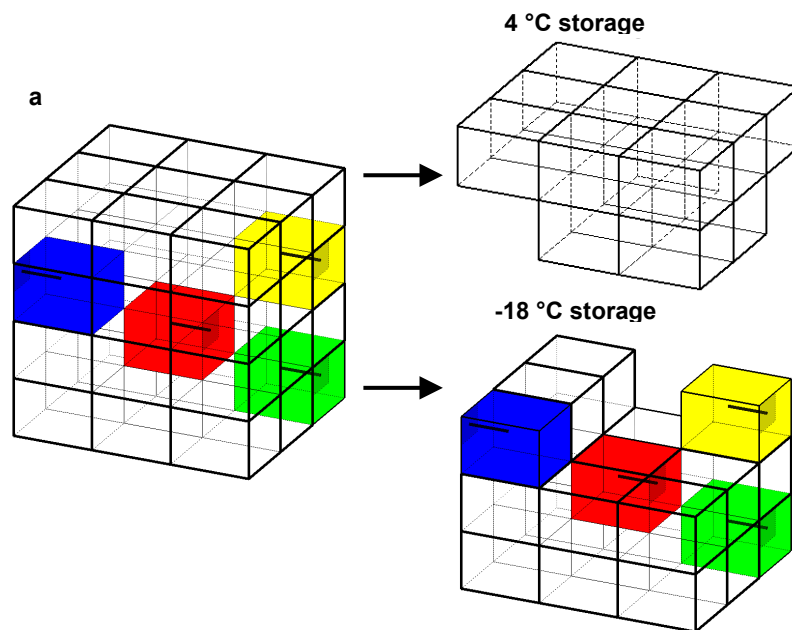


Figure S1: Packing of the 36 blocks of 5 kg Mozzarella cheese within a pallet for chilling and freezing. (a) The 36 boxes of cheese were close stacked in 4 layers of 9 boxes. Probes (indicated by the short black lines) were inserted into boxes in the bottom layer (corner box; green), the second bottom layer (central box; red) and third layer (opposite corner boxes; blue and yellow). (b) After chilling to between approximately 0 °C and -4 °C at 85-95 hours, the top 14 boxes of 5 kg Mozzarella cheese were removed for storage at 4 °C, the remaining 22 boxes of cheese in (c) were frozen and chilled to -18 °C for further storage.

## Freezing of cheese

The temperature of the 5 kg Mozzarella block samples stacked within a pallet, during blast chilling and freezing, was monitored using four probes to provide an estimate of the rate of heat transfer and time taken to freeze Mozzarella under industrial conditions (Figure S2). These probes also give an initial

indication of the variability in the temperature measured between selected 5 kg Mozzarella blocks within the pallet.

A number of characteristic heat transfer stages were detected as the 5 kg cheese blocks were chilled and frozen. Initially, cheese at  $22.3 \pm 1.2$  °C was pre-cooled to a temperature above the freezing point. This was followed by supercooling, a process where the cheese is cooled below its freezing point, which continues until there are sufficient nuclei to induce freezing (Ribero, Rubiolo, & Zorrilla, 2007). A phase change then occurs at the freezing temperature, accompanied by a local increase in temperature. This is followed by sub-cooling, where the frozen cheese is further cooled to -18 °C. In this study, these stages occurred over a total time course of 400 hours (Figure S2), although it took a further 590 hours (total of ~990 hours) to reach -18 °C (data not shown in Figure S2). The cheese temperature was fairly constant at -17 °C once frozen, with some small fluctuations that can occur during industrial frozen storage.

The initial data provided here on the variation in heat transfer between four selected 5 kg blocks within the stack of cheese in the pallet suggests that further detailed study of the effect of position in the pallet is needed to fully understand the extent of variation within industrial freezing processes.

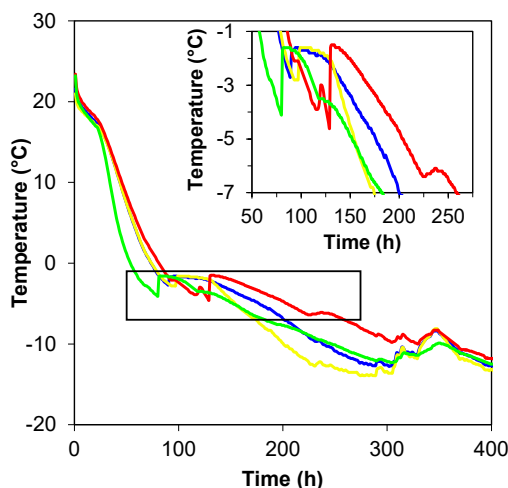


Figure S2: Temperature change within selected 5 kg Mozzarella cheese blocks during chilling and freezing. The inset shows the time taken to freeze samples, defined as the time taken to cool from -1.1 °C to -6.7 °C, as well as the point of freezing at  $-1.65 \pm 0.06$  °C, defined by the temperature at the start of the short plateau occurring directly after supercooling. The corresponding location of the temperature probes in the four selected 5 kg boxes in (a) (green, red, blue and yellow) is shown in Figure S1 above.

## Cheese composition and pH

The Mozzarella cheese had a standard composition within the range typical for this cheese (Kindstedt et al., 2004), with 21.3-21.4% (w/w) fat, 25.1-25.5% (w/w) protein, 49.9-50.4% (w/w) moisture and 0.8-1.0% (w/w) salt. The pH of the cheese was 5.3-5.4. No differences in composition were determined between cheese storage treatments.

## Proteolysis and functionality measures for thawed Mozzarella cheese

The following figures display the data described in the main text as a function of total storage time (Figures S3-S4). This is in contrast to the figures referred to in the main text, which are plotted as a function of time spent at 4 °C to provide a more meaningful comparison between cheese treatments (Figures 2-3).

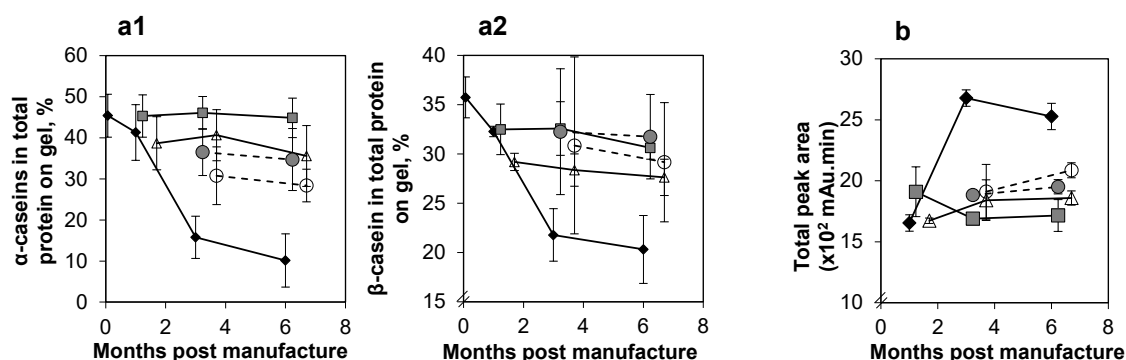


Figure S3: The changes determined by image analysis of the SDS-PAGE gels for  $\alpha$ -caseins (a1) and  $\beta$ -casein (a2). Changes to the HPLC total peak area as a function of storage time (b). Mozzarella samples were stored at 4 °C (◆), -18 °C and tempered for one week (■), -18 °C and tempered for three weeks (△), aged at 4 °C for four weeks, stored at -18 °C and tempered for one week (●) or aged at 4 °C for four weeks, stored at -18 °C and tempered for three weeks (○). Storage was for one, three or six months. Error bars are  $\pm$  one standard deviation of three replicate samples.

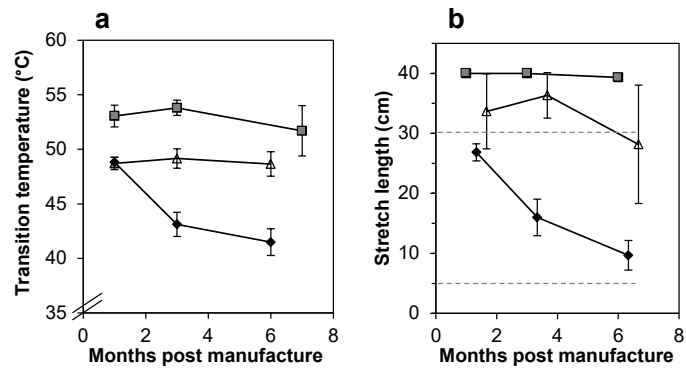


Figure S4: The meltability of Mozzarella samples as measured by the transition temperature determined by rheological analysis (a) and stretchability as measured by the stretch length (b) for cheese as a function of storage time; stored at 4 °C (◆), stored frozen at -18 °C and tempered for one week (■), stored at -18 °C and tempered for three weeks (△) for one, three and six months. The data presented are the mean ± the standard deviation of three replicate samples.

Table S1: Summary of pizza bake test parameters assessed after one, three and six months of storage. Observations are the average of three pizza bake trials evaluated by one trained assessor.

	1 month post manufacture			3 months post manufacture					6 months post manufacture				
Sample	4 °C	-18 °C then 4 °C for 1 week	-18 °C then 4 °C for 3 weeks	4 °C	-18 °C then 4 °C for 1 week	-18 °C then 4 °C for 3 weeks	Aged and frozen then 4 °C for 1 week	Aged and frozen then 4 °C for 3 weeks	4 °C	-18 °C then 4 °C for 1 week	-18 °C then 4 °C for 3 weeks	Aged and frozen then 4 °C for 1 week	Aged and frozen then 4 °C for 3 weeks
<b>Melt</b>	Good	Some outline	Good	Good	Some outline	Good	Good	Good	Good	Good	Good	Good	Good
<b>Skinning</b>	Weak	Strong skinning	Strong skinning	Weak	Strong	Weak	Medium	Weak	No	Medium	Weak	Weak	Weak
<b>Free oil release</b>	Optimum	Optimum	Optimum to heavy	Optimum	Optimum	Optimum	Optimum	Optimum	Low	Optimum to Heavy	Optimum	Optimum	Optimum
<b>Colour</b>	Golden brown	Golden brown	Golden brown	Dark brown	Golden brown	Golden brown	Golden brown	Golden brown	Dark brown	Golden brown	Golden brown	Golden brown	Golden brown
<b>Blistering (diameter)</b>	2-20 mm	2-10 mm	5-20 mm	5-30 mm	2-10 mm	2-20 mm	2-15 mm	2-15 mm	5-30 mm	2-10 mm	5-30 mm	2-25 mm	5-25 mm
<b>(coverage)</b>	25%	20%	20%	35%	20%	25%	20%	20%	30%	25%	25%	30%	30%

## **References**

Kindstedt, P. S., Carić, M., & Milanović, S. (2004). Pasta-filata cheeses. In P. F. Fox, P. L. H. McSweeney, T. M. Cogan, & T. P. Guinee (Eds.), *Cheese: Chemistry, Physics and Microbiology* (3rd edn, Vol. 2, pp. 251–277). [https://doi.org/10.1016/S1874-558X\(04\)80047-2](https://doi.org/10.1016/S1874-558X(04)80047-2)

Ribero, G. G., Rubiolo, A. C., & Zorrilla, S. E. (2007). Initial freezing point of Mozzarella cheese. *Journal of Food Engineering*, *81*(1), 157–161. <https://doi.org/10.1016/j.jfoodeng.2006.10.017>