



Minerva Access is the Institutional Repository of The University of Melbourne

**Author/s:**

Hu, RT;Royse, AG;Royse, C;Scott, DA;Bowyer, A;Boggett, S;Summers, P;Mazer, CD

**Title:**

Health-related quality of life after restrictive versus liberal RBC transfusion for cardiac surgery: Sub-study from a randomized clinical trial

**Date:**

2022-10-01

**Citation:**

Hu, R. T., Royse, A. G., Royse, C., Scott, D. A., Bowyer, A., Boggett, S., Summers, P. & Mazer, C. D. (2022). Health-related quality of life after restrictive versus liberal RBC transfusion for cardiac surgery: Sub-study from a randomized clinical trial. *Transfusion*, 62 (10), pp.1973-1983. <https://doi.org/10.1111/trf.17084>.

**Persistent Link:**

<https://hdl.handle.net/11343/333437>

**TITLE PAGE****Health-related quality of life after restrictive versus liberal red cell transfusion for cardiac surgery: sub-study from a randomized clinical trial.**

Raymond T Hu <sup>a,b</sup>, Alistair G Royse <sup>a,c</sup>, Colin Royse <sup>a,c,d</sup>, David A Scott <sup>a,e</sup> Andrea Bowyer <sup>a,c</sup>,  
Stuart Boggett <sup>a</sup>, Peter Summers <sup>f,g,h</sup>, C David Mazer <sup>i</sup>

- a) University of Melbourne, Parkville, Victoria 3010, Australia
- b) Austin Health, Heidelberg, Victoria 3084, Australia
- c) Royal Melbourne Hospital, RMH, Victoria 3050, Australia
- d) Outcomes Research Consortium, the Cleveland Clinic, Cleveland OH, USA
- e) St Vincent's Hospital Melbourne, 41 Victoria Parade, Fitzroy, Victoria 3065, Australia
- f) Statistical Consulting Centre at the University of Melbourne, Parkville, Victoria 3010, Australia
- g) Melbourne Disability Institute, University of Melbourne, Parkville, Victoria 3010, Australia
- h) Centre for Health Analytics, Murdoch Children's Research Institute, Royal Children's Hospital, Parkville, Victoria 3052, Australia
- i) St. Michael's Hospital, University of Toronto, Toronto ON Canada

**Funding**

- This work was supported by a project grant from the National Health and Medical Research Council (NHMRC) (APP ID 1085942) and the Canadian Institutes of Health

This is the author manuscript accepted for publication and has undergone full peer review but has not been through the copyediting, typesetting, pagination and proofreading process, which may lead to differences between this version and the Version of Record. Please cite this article as doi: [10.1111/trf.17084](https://doi.org/10.1111/trf.17084)

Research (CIHR 301852). Participating sites (site principal investigator) listed by states within Australia:

- New South Wales: Royal Prince Alfred Hospital (P Bannon); Royal North Shore Hospital (S Judelman, J Leyden); Westmead Hospital (A Eslick).
- South Australia: Flinders Medical Centre (RA Baker); Royal Adelaide Hospital (T Painter).
- Victoria: Alfred Hospital (P Myles); Austin Hospital (R Hu); Cabrini Hospital (D Brewster); Monash Medical Centre (J Smith), Royal Melbourne Hospital (A Royse); St Vincent's Hospital Melbourne (DA Story); The University Hospital Geelong (D Dimovski).

#### Conflict of Interest

- There are no conflicts of interest declared by any author.

#### Corresponding author contact information

- Raymond Hu, Department of Anaesthesia, Austin Health, PO Box 5555, 145 Studley Road, Heidelberg, Victoria 3084, Australia. Tel +613 9496 3800; Fax +613 9459 6421; raymond.hu@austin.org.au

#### Word count

- Abstract: 250 words
- Main text: 3,551 words
- Tables: 2
- Figures: 4
- Supplementary files: 1

Trial registration:

- ClinicalTrials.gov Identifier: NCT02042898

Running title:

- HRQOL after transfusion in cardiac surgery.

## **ABSTRACT AND KEY WORDS**

### **Background**

TRICS III, a multi-center randomized controlled trial, demonstrated clinical non-inferiority for restrictive vs. liberal red cell transfusion for patients undergoing cardiac surgery.

However, it is uncertain if transfusion strategy affects long-term health-related quality of life (HRQOL).

### **Study design and Methods**

In this planned sub-study of Australian patients in TRICS III, we sought to determine the non-inferiority of restrictive vs. liberal transfusion strategy on long-term HRQOL and to describe clinical outcomes 24 months postoperatively. The restrictive strategy involved transfusing red cells when hemoglobin was  $<7.5\text{g/dL}$ ; the transfusion triggers in the liberal group were  $<9.5\text{g/L}$  intraoperatively,  $<9.5\text{g/L}$  in intensive care, or  $<8.5\text{g/dL}$  on the ward. HRQOL assessments were performed using the 36-item short form survey version 2 (SF-36v2). Primary outcome was non-inferiority of summary measures of SF-36v2 at 12 months,

(non-inferiority margin: -0.25 effect size; restrictive minus liberal scores). Secondary outcomes included non-inferiority of HRQOL at 18 and 24 months.

## Results

617 Australian patients received allocated randomization; HRQOL data were available for 208/311 in restrictive and 217/306 in liberal group. After multiple imputation, non-inferiority of restrictive transfusion at 12 months was not demonstrated for HRQOL, and the estimates were directionally in favor of liberal transfusion. Non-inferiority also could not be concluded at 18 and 24 months. Sensitivity analyses supported these results. There were no differences in quality-adjusted life years (QALYs) or composite clinical outcomes up to 24 months after surgery.

## Discussion

The non-inferiority of a restrictive compared to a liberal transfusion strategy was not established for long-term HRQOL in this dataset.

## Trial registration

[ClinicalTrials.gov](https://clinicaltrials.gov) Identifier: NCT02042898

## Key words

Transfusion medicine, quality of life, red cells, cardiac surgery, hemoglobin, randomized controlled trial.

### **Abbreviations**

FMI = Fraction of missing information

HRQOL = health-related quality of life

MCID = minimum clinically important difference

MCS = Mental Component Score, one of two component summary scores of the SF-36v2

PCS = Physical Component Score, one of two component summary scores of the SF-36v2

QALY = quality-adjusted life years

RCT = randomized controlled trial

SD = standard deviation

SF-36v2 (also SF-36v2®) = 36-item short form survey version 2

SF-6D = 6 dimensional health state short form

## Introduction

For the composite outcome of death, myocardial infarction, stroke and new-onset renal failure with dialysis at 6 months after surgery, a large international randomized controlled trial (RCT) (Transfusion Requirements in Cardiac Surgery III, abbreviated as TRICS III) previously reported that a restrictive red cell transfusion strategy was non-inferior compared to a liberal red cell transfusion strategy in patients who are at moderate to high risk of death undergoing cardiac surgery<sup>1</sup>. Investigating longer-term health-related quality of life (HRQOL) data provides an additional patient-centered outcome of importance.

Both anemia and blood transfusion have been associated with reduced HRQOL. In observational studies, anemia has been linked to reduced HRQOL in various patient populations both with<sup>2,3</sup> and without<sup>4-6</sup> explicit cardiac disease, and a small pilot RCT has suggested that a higher transfusion threshold could improve HRQOL in patients with myelodysplasia<sup>7</sup>. On the other hand, an observational study has suggested that red cell transfusion is associated with worse functional performance based on a quality of life instrument after major cardiac surgery<sup>8</sup>. Nevertheless, these associations have not been consistently demonstrated in other observational studies after cardiac<sup>9</sup> or non-cardiac<sup>10</sup> surgery. Furthermore, without randomization, confounding factors are difficult to adjust for.

In critical care settings, large, multi-center RCTs have compared HRQOL amongst patients with different transfusion thresholds. These have failed to demonstrate statistical differences between groups at three months<sup>11</sup> or at 12 months<sup>12</sup>, although one of these studies in a cardiac surgical population found reduction in the secondary outcome of mortality alone in the liberal group at 3 months<sup>11</sup>. No RCTs involving cardiac surgical patients has investigated HRQOL

outcomes beyond three months with regards to a restrictive compared to a liberal transfusion strategy.

The clinical non-inferiority of a restrictive red cell transfusion strategy in a critical care setting has clear implications for resource savings. However, instead of adopting practice change based on resources alone, it would be appropriate to consider the effect of a restrictive transfusion strategy on other outcomes such as HRQOL over a longer term and in a population at high risk for red cell transfusions. In a planned sub-study of the Australian cohort from TRICS III, HRQOL was obtained for up to 24 months after incident surgery to examine the long-term impact of restrictive vs. liberal transfusion thresholds on HRQOL. The primary objective of this sub-study was to investigate the non-inferiority of a restrictive vs. liberal red cell transfusion strategy on HRQOL at 12 months after surgery. Secondly, we aimed to compare HRQOL at 18 and 24 months after index surgery; and to examine clinical outcomes up to 24 months after index surgery amongst patients receiving a restrictive vs. liberal red cell transfusion strategy.

## **Materials and Methods**

All patients enrolled in the Australian cohort of TRICS III were invited to participate in this sub-study. All patients were recruited between January 20, 2014 to March 20, 2017. The study was completed March 20, 2019. Ethical review and informed patient consent was obtained (Melbourne Health Human Research Ethics Committee reference number HREC/13/MH/392). Details of TRICS III methodology have been published previously<sup>1</sup>. In brief, inclusion criteria were: 18 years of age or older; scheduled for cardiopulmonary bypass; and a preoperative additive EuroSCORE I<sup>13</sup> of 6 or more. Exclusion criteria were:

unable to receive or refusal to receive blood products; involvement in a preoperative autologous donation program; undergoing heart transplantation; undergoing surgery solely for the insertion of a ventricular assist device; and pregnancy or lactation. Eligible patients were randomized in a 1:1 ratio to one of two open-label transfusion strategies (liberal or restrictive) from the start of their surgery to discharge or 28 days postoperatively, whichever occurred first. A centralized, concealed, web-based software using computer-generated random permuted blocks of between two and six was used for randomization, which was stratified according to center. The liberal transfusion strategy had a hemoglobin transfusion threshold of  $<9.5\text{g/dL}$  intraoperatively and in the intensive care unit (ICU) whilst the threshold was  $<8.5\text{g/dL}$  on the ward; the restrictive transfusion strategy had a hemoglobin transfusion threshold of  $<7.5\text{g/dL}$  throughout the study period

The 36-item short form survey version 2<sup>14</sup> (SF-36v2) was used to measure HRQOL via telephone at 6 monthly intervals from 12 months after index surgery until conclusion of the study period, with a minimum commitment of 24 months. The SF-36v2 is the second version of the 36-item short form questionnaire which consists of eight functional domains that contribute to two summary scores: the Physical Component Scores (PCS) and Mental Component Scores (MCS). The eight functional domains of SF-36v2 are: General health, Physical Functioning, Bodily Pain, Vitality, Role-Physical, Social Functioning, Role-Emotional and Mental Health.

Our primary analysis was based on non-inferiority comparisons of the PCS and MCS at 12 months, after transformation of the scores using population norms developed within Australia<sup>15</sup>. The final transformed score is scaled from 0-100, with higher PCS and MCS values indicating better health. A score of zero was assigned to patients who had died. For the

Australian population, a mean (SD) of 50.27 (9.70) for PCS and 52.92 (10.17) for MCS have been reported<sup>15</sup>.

Our major secondary endpoints were the same as the primary endpoint, compared at 18 and 24 months. Additionally, all MCS and PCS values at 12, 18 and 24 months underwent an alternative scoring method on secondary analysis, utilizing licensed software (PRO CoRE 1.5 software, Optum®, Johnston, RI, US). This scoring method produces a mean (SD) of 50 (10) for both PCS and MCS. This approach has been recommended for research involving SF36v2 to enable international comparisons<sup>16</sup>.

Other secondary endpoint were Quality Adjusted Life Years (QALY); as well as the original and expanded pooled composite clinical outcomes defined in TRICS III<sup>1</sup> assessed at 12, 18 and 24 months, between randomized groups. QALY was measured by first converting SF-36v2 into a health state measure representing a unitless value between 0 and 1; with 0 representing death and 1 being perfect health. This conversion has been termed the SF-6D (6 dimensional health state short form) and was first described by Brazier et al.<sup>17</sup> for the original SF-36 (version 1). An analogous conversion based on SF-36v2 and the Australian population<sup>18</sup> was used in this study to obtain SF-6D at 12, 18 and 24 months after index surgery. Baseline SF-6D values were taken from population means for age and sex for both randomized groups over time<sup>18</sup>. QALY was measured as the area below the change in SF-6D over time, assuming a linear change between time points. The original pooled composite clinical outcomes in TRICS III were any of the following: death, myocardial infarction, stroke or new-onset renal failure with dialysis. The expanded pooled composite clinical

outcome in TRICS III were any of the following: all components of the primary outcome, emergency department visits, hospital readmissions or coronary revascularization.

For the primary outcome and major secondary outcomes, non-inferiority was defined as a one-tailed margin of less than minus 0.25 Cohen's effect size for HRQOL (restrictive minus liberal), meaning that there could be no more than a 2.5 point reduction in PCS and MCS for restrictive relative to liberal group scores. This was chosen as the minimal clinically important difference (MCID) for HRQOL. 275 patients in each group would allow 90% power to detect a one-sided 95% confidence interval that was above this non-inferiority limit<sup>19</sup>.

For the secondary outcome comparing pooled composite outcomes, survival analysis was performed using interval censoring with estimated survival curves obtained using the method of Turnbull<sup>20</sup>. The two treatment groups were compared using the log-rank test for interval-censored data<sup>21</sup>.

Our *a priori* plan for missing data was to impute values using multiple imputation. As multiple imputation relies on assuming that missing values are missing at random, sensitivity analyses was performed under three alternate assumptions: one for data missing completely at random (tested using complete case analysis) and two for data missing not at random (tested by assigning all missing values to worse possible outcome i.e. death; and by assigning missing values to 50% of imputed value i.e. assuming a detrimental impact for missing values imputed). As there was no statistical penalty for the description of both one-sided 95% confidence intervals and two-sided 90% confidence intervals using the same data, this was reported as part of the sensitivity analysis.

Statistical analyses were carried out using Minitab 19.2020.1 (Minitab 19 Statistical Software (2020). [Computer software]. State College, PA: Minitab, Inc. <https://www.minitab.com>) and R 4.1.0 (R Core Team (2021). R: A language and environment for statistical computing. R Foundation for Statistical Computing, Vienna, Austria. URL <https://www.R-project.org>) with the mice package (3.13.0; <https://amices.org/mice/>) for imputation of missing data using the chained equations algorithm (van Buuren S, Groothuis-Oudshoorn K (2011). “mice: Multivariate Imputation by Chained Equations in R.” *Journal of Statistical Software*, 45(3), 1-67.<https://www.jstatsoft.org/v45/i03/>)

## Results

A total of 12 university-affiliated cardiac centers participated. Of 1,546 eligible patients in the Australian arm of the TRICS III study, 629 patients were randomized of which 617 received their allocated randomization (Figure 1). The characteristics of patients randomized to either a liberal (n=306) or restrictive (n=311) transfusion strategy are presented in Table 1. As expected from the study design, significant differences were seen in the number of red cells transfused between groups (liberal 69.9% vs. restrictive 50.2%, OR 0.43(0.31-0.60)) without statistically significant differences in other blood products (plasma, platelet and cryoprecipitate) or prothrombin complex concentrate usage. Other characteristics were well balanced due to randomization.

Death occurred in 25/311 (8%) in the restrictive group and 22/306 (7%) in the liberal group over 24 months. Data was missing at all time points for 103/311 (33%) in the restrictive group and 89/306 (29%) in the liberal group. HRQOL data was available for at least one time

point in 208/311 (67%) in the restrictive group and 217/306 (71%) in the liberal group.

Multiple imputation was used to allow for analysis of all 617 patients, on the assumption that data was missing at random (Figure 1). The number of imputations performed was 100 and the variables used in the multiple imputation model are described in the *Online Supplementary Data*.

#### *Primary outcome*

The differences in the MCS and PCS (restrictive group scores minus liberal group scores), normalized to Australian values after multiple imputation at 12 months are presented in Table 2 and Figure 2. The point estimate for mean difference was -2.6 for MCS and -2.0 for PCS. The lower limit of a one-sided 95% confidence limit breached the non-inferiority limit (-2.5) for both MCS (-5.5) and PCS (-4.4) at 12 months, in favor of a liberal transfusion strategy.

#### *Secondary outcomes*

After multiple imputation, the differences in HRQOL (restrictive minus liberal MCS and PCS scores) using populations norms for Australia at 18 and 24 months also breached the non-inferiority limit at the lower limit of a one-sided 95% confidence interval (Table 2, Figure 2). Using US instead of Australian population norms to calculate HRQOL scores provided a similar range of differences at 12, 18 and 24 months (Table 2, Figure 2), with the lower limit of one-sided 95% confidence intervals breaching the non-inferiority limit across all time points, again favoring a liberal transfusion strategy.

After conversion of individual SF-36v2 data into SF-6D data (expressed as a value between zero and one), the differences in QALYs (restrictive group minus liberal group) over 24 months between transfusion groups was -0.038 (95% CI -0.103 to 0.028) and did not reach statistical significance ( $p=0.268$ ) (Figure 3).

On survival analysis, there were no statistically significant differences observed across time between liberal and restrictive groups with regards to either the original pooled composite outcome (death from any cause, myocardial infarction, stroke or new-onset renal failure with dialysis) or expanded pooled composite outcomes (all components of the primary outcome as well as any emergency department visit, hospital readmission or coronary revascularization) (Figure 4). Log-rank tests for interval-censored data failed to show significant differences between groups in the original pooled composite outcome ( $p=0.733$ ) or the expanded pooled composite outcome ( $p=0.772$ ).

#### *Sensitivity analysis*

Sensitivity analyses are presented in Tables S1-3 and Figures S1-3 in the *Online Supplementary Data*. These sensitivity analyses reveal the impact of pre-defined assumptions on the widening of the one-sided confidence 95% intervals with a more negative value for the lower limit of this confidence interval and a more negative value in the point estimate for differences between groups. The upper limit of two-sided 90% confidence intervals were below zero (which suggests statistical inferiority) for MCS in 5/6 assumptions at 12 months, 4/6 assumptions at 18 months and 0/6 assumptions at 24 months. For PCS, the upper limit of two-sided 90% confidence intervals were below zero for 2/6 assumptions at 12 months, 3/6 assumptions at 18 months, and 0/6 assumptions at 24 months.

Subsequent *post-hoc* analysis was performed reporting one-sided 97.5% confidence intervals and its statistically equivalent two-sided 95% confidence intervals for comparison with the initial planned sensitivity analysis (Table S1-3 in the *Online Supplementary Data*). This analysis demonstrates further values that could be contained within a wider confidence interval, with the upper limit of 95% confidence levels below zero for a smaller number of assumptions for MCS values at 12 months and 18 months; but not MCS values at 24 months or PCS values at any time.

## Discussion

In this study, non-inferiority could not be demonstrated between HRQOL as measured by the summary scores of SF-36v2 between restrictive vs. liberal transfusion strategies 12 months after surgery. Secondary analysis could not conclude non-inferiority at 18 or 24 months. Sensitivity analysis demonstrated the possibility of statistical inferiority of a restrictive strategy with 90% confidence given certain assumptions, particularly for MCS at 12 months, beyond a threshold regarded as the MCID in a cardiac surgical population with at least a moderate risk of death. As this data is only derived from sensitivity testing, it must be regarded as hypothesis-generating only. Future studies are required to explore the relationship of transfusion strategy on long-term HRQOL in greater detail.

The relationship between transfusion strategy and long-term HRQOL is expected to reflect the balance between the short and long-term risks associated with red cell transfusion<sup>22,23</sup> against the benefits of avoiding transient lower hemoglobin values during the intervention period. Red cell transfusion could be associated with long-term HRQOL through the pro-

inflammatory and immunomodulatory effects of stored blood<sup>24</sup>, whilst anemia has been associated with cognitive decline<sup>25</sup> as well as physical functioning<sup>26</sup>, which could be expected to have longer-term sequelae. Our findings support the need to better understand the longer-term effects of transfusion strategy on HRQOL in vulnerable populations who may be at risk of cognitive or physical decline. Future studies should track hemoglobin levels more closely after discharge; and explore metrics such as the rate of rise of hemoglobin after blood loss or the duration of time spent below anemia thresholds rather than an absolute hemoglobin value at a single point in time; whilst concurrently measuring physical and mental ability beyond the short term.

This study was a multi-center RCT which minimizes bias and allows for broad applicability. Confining the study to a particular geographical context is also important in HRQOL research as it allows for effective comparisons without significant population variation. This study is notable as an RCT comparing restrictive vs. liberal red cell transfusion on outcomes beyond 6 months in patients undergoing cardiac surgery.

Our study was adequately powered at 90% to detect a one-sided non-inferiority margin (with 95% confidence) of minus 0.25 effect size, with the restrictive transfusion threshold set as the comparator (i.e. restrictive minus liberal transfusion HRQOL values). Of note, if we had reported a one-sided 97.5% confidence limit as our primary outcome (statistically equivalent to a two-sided 95% confidence interval), the lower margin would have breached our defined non-inferiority limit by a greater extent because the wider confidence interval encompasses more possible values. A restrictive strategy was the appropriate one-sided comparator given that it is the strategy that is associated with the benefit of reduced costs and demonstrated clinical non-inferiority. A 0.25 effect size was taken to be the definition of MCID in this

study for HRQOL. A small effect size has been described as 0.20 and a moderate effect size has been described as 0.50<sup>27</sup>. Whilst the effect size that may be regarded as MCID for HRQOL may lie closer to 0.50 effect size<sup>27,28</sup>, in selecting margins in non-inferiority trials, care must be taken to avoid deliberately large non-inferiority margins that would favor the conclusion of non-inferiority<sup>29,30</sup>. Therefore, our chosen non-inferiority margin was not increased beyond 0.25 effect size.

We confined our analysis to global summary scores for SF-36v2 rather than the eight individual functional domains within SF-36v2 thereby avoiding statistical disadvantage for multiple comparison. Nevertheless, it remains possible that specific domains could have more weight in transfusion trials and warrant further investigation.

This longitudinal study was encumbered by loss of responders over time. This phenomenon is well described in the elderly population<sup>31</sup> and has been reported in other cardiovascular trials<sup>2,28,32,33</sup>. It is possible that this missing data contains information that is crucial; either because of a substantial difference in quality of life between those who respond compared to those who do not, or because of the influence of other measured variables such as age, sex, co-morbidities or HRQOL measured at other points in time. However, we minimized the impact of missing data by performing multiple imputation using auxiliary clinical data points and performing sensitivity analysis, which are both recommended strategies<sup>34</sup>. Of note, multiple imputation is still appropriate for reducing bias and improving precision even in the presence of large amount of missing data<sup>35</sup>, particularly in the absence of high fraction of missing information (FMI)<sup>36</sup>. The FMI was moderate lying between 0.23 to 0.30 for most imputed values (Table 2). Our strategy of assigning a PCS and MCS score of zero to patients who died is contentious; and there is ongoing debate about how best to account for death in

longitudinal studies measuring HRQOL. Nevertheless, assigning a value of zero for death has not been shown to substantially change the range of possible values derived after multiple imputation, when compared to other strategies used for dealing with death<sup>37</sup>.

29% of patients (444 / 1546) declined to participate or were unable to participate in our trial and a further 16% (249 / 1546) were missed. These contributed to the relatively modest 41% (629 / 1546) of patients actually recruited to the study. Whilst these may have limited how representative our study was compared to the population being investigated (particularly with regards to sicker patients being unable to provide consent or refusal to participate due to culturally and linguistically diverse backgrounds), our recruitment rate was comparable to other pragmatic RCTs in critical care settings that have similar logistical issues to negotiate in implementation<sup>1,38,39</sup>.

One of the possible confounders for HRQOL in our study was hemoglobin at time of HRQOL assessment<sup>2,3</sup>. However, hemoglobin would be expected to have been similar in both groups by 12 months. No RCTs have been performed focusing on the association of hemoglobin on HRQOL in the cardiac surgical population. Observational studies that have suggested a relationship between hemoglobin and HRQOL cannot exclude the possibility that patient knowledge of increased hemoglobin value influenced their favorable perceptions of health; nor exclude confounders in the relationship such as differences in the management of underlying chronic disease<sup>2</sup>. Additionally, the use of erythropoietin stimulating agents has been shown to improve hemoglobin without concomitant improvements in HRQOL in other settings<sup>40-42</sup> which implies that the relationship between the two is not linear. Furthermore, even though intravenous iron infusion (compared to oral iron or usual care) has been shown in RCTs to be associated with improvements in hemoglobin when given to anemic patients

undergoing abdominal surgery<sup>43-46</sup>, improvements in quality of life have not been consistently demonstrated<sup>44-46</sup>.

We did not record baseline HRQOL, which is ideal for calculation of QALY. Nevertheless, it is common in critical care literature for baseline HRQOL to be estimated<sup>47</sup>. Randomization allowed our baseline characteristics to be well matched, and our assumptions for HRQOL at baseline were taken from appropriate local population estimates. Whilst a local pre-operative cardiac surgical cohort would have provided more accurate baseline population estimates, we are not aware of any published values from a large sample population. We did not perform a health economic study and therefore incremental cost effectiveness ratios could not be estimated. However, there was only a small difference in QALY between groups, which did not justify a detailed cost analysis.

As with the original TRICS III trial, transfusion strategy was not blinded as it was not feasible. This could have introduced bias in detecting outcomes, however, it is unlikely that transfusion strategy would be recalled in evaluation of HRQOL 12 months later and beyond. Of note, the trial design of TRICS III did not require assessment of any physiological impact of a low hemoglobin level, as transfusion was based on hemoglobin value alone. However, the absence of requiring physiological triggers could imply a bias towards a non-inferiority which we nevertheless could not establish in our dataset.

In this multi-center RCT, non-inferiority could not be established with a restrictive compared to a liberal transfusion strategy for patients undergoing cardiac surgery at moderate risk of complications with regards to health-related quality of life at 12 months. Further analysis

suggested that non-inferiority could not be established at either 18 or 24 months. This raises the question of possible long-term reduction in HRQOL with restrictive strategies. Future studies are required to explore this relationship further.

## ACKNOWLEDGEMENTS

- The authors wish to thank Professor Ian Gordon and Peter Summers from the Statistical Consulting Centre at the University of Melbourne for assistance with statistical analysis.

## REFERENCES

1. Mazer CD, Whitlock RP, Fergusson DA, et al. Six-Month Outcomes after Restrictive or Liberal Transfusion for Cardiac Surgery. *N Engl J Med*. 2018;379(13):1224-1233. doi:10.1056/NEJMoa1808561
2. Adams KF, Jr., Piña IL, Ghali JK, et al. Prospective evaluation of the association between hemoglobin concentration and quality of life in patients with heart failure. *Am Heart J*. Dec 2009;158(6):965-71. doi:10.1016/j.ahj.2009.10.015
3. DeLarochelière H, Urena M, Amat-Santos IJ, et al. Effect on outcomes and exercise performance of anemia in patients with aortic stenosis who underwent transcatheter aortic valve replacement. *Am J Cardiol*. Feb 15 2015;115(4):472-9. doi:10.1016/j.amjcard.2014.11.033
4. Moreno F, López Gomez JM, Sanz-Guajardo D, Jofre R, Valderrábano F. Quality of life in dialysis patients. A spanish multicentre study. Spanish Cooperative Renal Patients Quality of Life Study Group. *Nephrol Dial Transplant*. 1996;11 Suppl 2:125-9. doi:10.1093/ndt/11.supp2.125
5. Yohannes AM, Ershler WB. Anemia in COPD: a systematic review of the prevalence, quality of life, and mortality. *Respir Care*. May 2011;56(5):644-52. doi:10.4187/respcare.01002
6. Stauder R, Valent P, Theurl I. Anemia at older age: etiologies, clinical implications, and management. *Blood*. 2018;131(5):505-514. doi:10.1182/blood-2017-07-746446
7. Stanworth SJ, Killick S, McQuilten ZK, et al. Red cell transfusion in outpatients with myelodysplastic syndromes: a feasibility and exploratory randomised trial. *Br J Haematol*. Apr 2020;189(2):279-290. doi:10.1111/bjh.16347
8. Koch CG, Khandwala F, Li L, Estafanous FG, Loop FD, Blackstone EH. Persistent effect of red cell transfusion on health-related quality of life after cardiac surgery. *Ann Thorac Surg*. Jul 2006;82(1):13-20. doi:10.1016/j.athoracsur.2005.07.075
9. Ad N, Holmes SD, Shuman DJ, Speir AM, Pritchard G, Halpin L. Should asymptomatic patients discharged with lower hemoglobin expect worse outcomes after valve surgery? *J Thorac Cardiovasc Surg*. Nov 2015;150(5):1322-8. doi:10.1016/j.jtcvs.2015.07.076
10. Abdullah HR, Ranjakunalan N, Yeo W, Tan MH, Poopalalingam R, Sim YE. Association between preoperative anaemia and blood transfusion with long-term functional and quality of life outcomes amongst patients undergoing primary total knee arthroplasty in Singapore: a single-centre retrospective study. *Qual Life Res*. Jan 2019;28(1):85-98. doi:10.1007/s11136-018-1996-z
11. Reeves BC, Pike K, Rogers CA, et al. A multicentre randomised controlled trial of Transfusion Indication Threshold Reduction on transfusion rates, morbidity and health-care resource use following cardiac surgery (TITRe2). *Health Technol Assess*. Aug 2016;20(60):1-260. doi:10.3310/hta20600
12. Rygaard SL, Holst LB, Wetterslev J, et al. Long-term outcomes in patients with septic shock transfused at a lower versus a higher haemoglobin threshold: the TRISS randomised, multicentre clinical trial. *Intensive Care Med*. Nov 2016;42(11):1685-1694. doi:10.1007/s00134-016-4437-x

13. Nashef SA, Roques F, Michel P, Gauducheau E, Lemeshow S, Salamon R. European system for cardiac operative risk evaluation (EuroSCORE). *Eur J Cardiothorac Surg*. Jul 1999;16(1):9-13. doi:10.1016/s1010-7940(99)00134-7
14. Maruish M, ed. *User's manual for the SF-36v2 Health Survey*. 3rd ed. QualityMetric Incorporated; 2011.
15. Hawthorne G, Osborne RH, Taylor A, Sansoni J. The SF36 Version 2: critical analyses of population weights, scoring algorithms and population norms. *Qual Life Res*. May 2007;16(4):661-73. doi:10.1007/s11136-006-9154-4
16. Jenkinson C. Comparison of UK and US methods for weighting and scoring the SF-36 summary measures. *J Public Health Med*. Dec 1999;21(4):372-6. doi:10.1093/pubmed/21.4.372
17. Brazier J, Roberts J, Deverill M. The estimation of a preference-based measure of health from the SF-36. *J Health Econ*. 2002/03/01/ 2002;21(2):271-292. doi:[https://doi.org/10.1016/S0167-6296\(01\)00130-8](https://doi.org/10.1016/S0167-6296(01)00130-8)
18. Norman R, Church J, van den Berg B, Goodall S. Australian health-related quality of life population norms derived from the SF-6D. *Aust N Z J Public Health*. Feb 2013;37(1):17-23. doi:10.1111/1753-6405.12005
19. Flight L, Julious SA. Practical guide to sample size calculations: non-inferiority and equivalence trials. *Pharm Stat*. 2016;15(1):80-89. doi:<https://doi.org/10.1002/pst.1716>
20. Turnbull BW. The empirical distribution function with arbitrarily grouped, censored and truncated data. *Journal of the Royal Statistical Society: Series B (Methodological)*. 1976;38(3):290-295.
21. Fay MP, Shaw PA. Exact and Asymptotic Weighted Logrank Tests for Interval Censored Data: The interval R package. *J Stat Softw*. Aug 2010;36(2)doi:10.18637/jss.v036.i02
22. Bhaskar B, Dulhunty J, Mullany DV, Fraser JF. Impact of blood product transfusion on short and long-term survival after cardiac surgery: more evidence. *Ann Thorac Surg*. Aug 2012;94(2):460-7. doi:10.1016/j.athoracsur.2012.04.005
23. Shishehbor MH, Madhwal S, Rajagopal V, et al. Impact of Blood Transfusion on Short- and Long-Term Mortality in Patients With ST-Segment Elevation Myocardial Infarction. *JACC Cardiovasc Interv*. 2009/01/01/ 2009;2(1):46-53. doi:<https://doi.org/10.1016/j.icin.2008.09.011>
24. Remy KE, Hall MW, Cholette J, et al. Mechanisms of red blood cell transfusion-related immunomodulation. *Transfusion*. Mar 2018;58(3):804-815. doi:10.1111/trf.14488
25. Qin T, Yan M, Fu Z, et al. Association between anemia and cognitive decline among Chinese middle-aged and elderly: evidence from the China health and retirement longitudinal study. *BMC Geriatr*. 2019/11/12 2019;19(1):305. doi:10.1186/s12877-019-1308-7
26. Wouters H, van der Klauw MM, de Witte T, et al. Association of anemia with health-related quality of life and survival: a large population-based cohort study. *Haematologica*. Mar 2019;104(3):468-476. doi:10.3324/haematol.2018.195552
27. Farivar SS, Liu H, Hays RD. Half standard deviation estimate of the minimally important difference in HRQOL scores? *Expert Rev Pharmacoecon Outcomes Res*. Oct 2004;4(5):515-23. doi:10.1586/14737167.4.5.515
28. Grand N, Bouchet JB, Zufferey P, et al. Quality of Life After Cardiac Operations Based on the Minimal Clinically Important Difference Concept. *Ann Thorac Surg*. Aug 2018;106(2):548-554. doi:10.1016/j.athoracsur.2018.02.050

29. Dunn DT, Copas AJ, Brocklehurst P. Superiority and non-inferiority: two sides of the same coin? *Trials*. 2018/09/17 2018;19(1):499. doi:10.1186/s13063-018-2885-z
30. Gladstone BP, Vach W. Choice of non-inferiority (NI) margins does not protect against degradation of treatment effects on an average--an observational study of registered and published NI trials. *PLoS One*. 2014;9(7):e103616. doi:10.1371/journal.pone.0103616
31. Andresen EM, Gravitt GW, Aydelotte ME, Podgorski CA. Limitations of the SF-36 in a sample of nursing home residents. *Age Ageing*. 1999;28(6):562-566. doi:10.1093/ageing/28.6.562
32. Abdallah MS, Wang K, Magnuson EA, et al. Quality of Life After Surgery or DES in Patients With 3-Vessel or Left Main Disease. *J Am Coll Cardiol*. Apr 25 2017;69(16):2039-2050. doi:10.1016/j.jacc.2017.02.031
33. Grady KL, Jones PG, Cristian-Andrei A, et al. Causes and Consequences of Missing Health-Related Quality of Life Assessments in Patients Who Undergo Mechanical Circulatory Support Implantation: Insights From INTERMACS (Interagency Registry for Mechanically Assisted Circulatory Support). *Circ Cardiovasc Qual Outcomes*. Dec 2017;10(12):e003268. doi:10.1161/circoutcomes.116.003268
34. Rombach I, Rivero-Arias O, Gray AM, Jenkinson C, Burke Ó. The current practice of handling and reporting missing outcome data in eight widely used PROMs in RCT publications: a review of the current literature. *Qual Life Res*. Jul 2016;25(7):1613-23. doi:10.1007/s11136-015-1206-1
35. Madley-Dowd P, Hughes R, Tilling K, Heron J. The proportion of missing data should not be used to guide decisions on multiple imputation. *J Clin Epidemiol*. 2019/06/01/2019;110:63-73. doi:<https://doi.org/10.1016/j.jclinepi.2019.02.016>
36. Li KH, Raghunathan TE, Rubin DB. Large-Sample Significance Levels from Multiply Imputed Data Using Moment-Based Statistics and an F Reference Distribution. *Journal of the American Statistical Association*. 1991/12/01 1991;86(416):1065-1073. doi:10.1080/01621459.1991.10475152
37. Biering K, Hjollund NH, Frydenberg M. Using multiple imputation to deal with missing data and attrition in longitudinal studies with repeated measures of patient-reported outcomes. *Clin Epidemiol*. 2015;7:91-106. doi:10.2147/clep.S72247
38. Burns KE, Zubrinich C, Tan W, et al. Research recruitment practices and critically ill patients. A multicenter, cross-sectional study (the Consent Study). *Am J Respir Crit Care Med*. Jun 1 2013;187(11):1212-8. doi:10.1164/rccm.201208-1537OC
39. Murphy GJ, Pike K, Rogers CA, et al. Liberal or restrictive transfusion after cardiac surgery. *N Engl J Med*. Mar 12 2015;372(11):997-1008. doi:10.1056/NEJMoa1403612
40. Collister D, Komenda P, Hiebert B, et al. The Effect of Erythropoietin-Stimulating Agents on Health-Related Quality of Life in Anemia of Chronic Kidney Disease: A Systematic Review and Meta-analysis. *Ann Intern Med*. Apr 5 2016;164(7):472-8. doi:10.7326/m15-1839
41. Bohlius J, Bohlke K, Castelli R, et al. Management of Cancer-Associated Anemia With Erythropoiesis-Stimulating Agents: ASCO/ASH Clinical Practice Guideline Update. *J Clin Oncol*. 2019;37(15):1336-1351. doi:10.1200/jco.18.02142
42. Oliva EN, Platzbecker U, Fenaux P, et al. Targeting health-related quality of life in patients with myelodysplastic syndromes - Current knowledge and lessons to be learned. *Blood Rev*. Nov 2021;50:100851. doi:10.1016/j.blre.2021.100851

43. Keeler BD, Dickson EA, Simpson JA, et al. The impact of pre-operative intravenous iron on quality of life after colorectal cancer surgery: outcomes from the intravenous iron in colorectal cancer-associated anaemia (IVICA) trial. *Anaesthesia*. Jun 2019;74(6):714-725. doi:10.1111/anae.14659
44. Richards T, Baikady RR, Clevenger B, et al. Preoperative intravenous iron to treat anaemia before major abdominal surgery (PREVENTT): a randomised, double-blind, controlled trial. *Lancet*. Sep 4 2020;396(10259):1353-61. doi:10.1016/s0140-6736(20)31539-7
45. Kim YW, Bae JM, Park YK, et al. Effect of Intravenous Ferric Carboxymaltose on Hemoglobin Response Among Patients With Acute Isovolemic Anemia Following Gastrectomy: The FAIRY Randomized Clinical Trial. *JAMA*. May 23 2017;317(20):2097-2104. doi:10.1001/jama.2017.5703
46. Froessler B, Palm P, Weber I, Hodyl NA, Singh R, Murphy EM. The Important Role for Intravenous Iron in Perioperative Patient Blood Management in Major Abdominal Surgery: A Randomized Controlled Trial. *Ann Surg*. Jul 2016;264(1):41-6. doi:10.1097/sla.0000000000001646
47. Vainiola T, Roine RP, Pettilä V, Kantola T, Räsänen P, Sintonen H. Effect of Health-Related Quality-Of-Life Instrument and Quality-Adjusted Life Year Calculation Method on the Number of Life Years Gained in the Critical Care Setting. *Value Health*. 2011/12/01/2011;14(8):1130-1134. doi:<https://doi.org/10.1016/j.ival.2011.05.047>

**Table 1: Characteristics of patients.**

<b>Variable</b>	<b>Liberal (N=306)</b>	<b>Restrictive (N=311)</b>	<b>Odds Ratio (95% CI)</b>
<b>Baseline characteristics</b>			
Age (years)	73±10	72±11	NA
Male sex	199 (65.0)	212 (68.2)	NA
Body-mass index (kg/m <sup>2</sup> )	28.6±5.5	29.2±5.5	NA
EuroSCORE I <sup>a</sup>	8.1±2.0	8.3±2.2	NA
Previous cardiac surgery	41 (13.4)	55 (17.7)	NA
Myocardial infarction within 30 days	12 (3.9)	12 (3.9)	NA
Diabetes	95 (31.0)	95 (30.5)	NA
Treated hypertension	247 (80.7)	248 (79.7)	NA
Emergency surgery	5 (1.6)	2 (0.6)	NA
CABG surgery only	81 (26.5)	88 (28.3)	NA
CABG and valve surgery	72 (23.5)	64 (20.6)	NA
CABG and other, non-valve surgery	34 (11.1)	30 (9.6)	NA
Valve surgery only	75 (24.5)	70 (22.5)	NA
Other, non-CABG surgery	119 (38.9)	129 (41.5)	NA
Duration of CPB (min)	125±63	131±70	NA
Intraoperative tranexamic acid	265 (86.6)	265 (85.2)	NA
<b>In-hospital transfusion outcomes</b>			
Red cell transfused	214 (69.9)	156 (50.2)	0.43 (0.31-0.6)
Plasma transfused	76 (24.8)	68 (21.9)	0.85 (0.58-1.23)
Platelet transfused	88 (28.8)	95 (30.5)	1.09 (0.77-1.54)
Cryoprecipitate transfused	47 (15.4)	45 (14.5)	0.93 (0.6-1.45)
PCC transfused	16 (5.2)	17 (5.5)	1.05 (0.52-2.11)

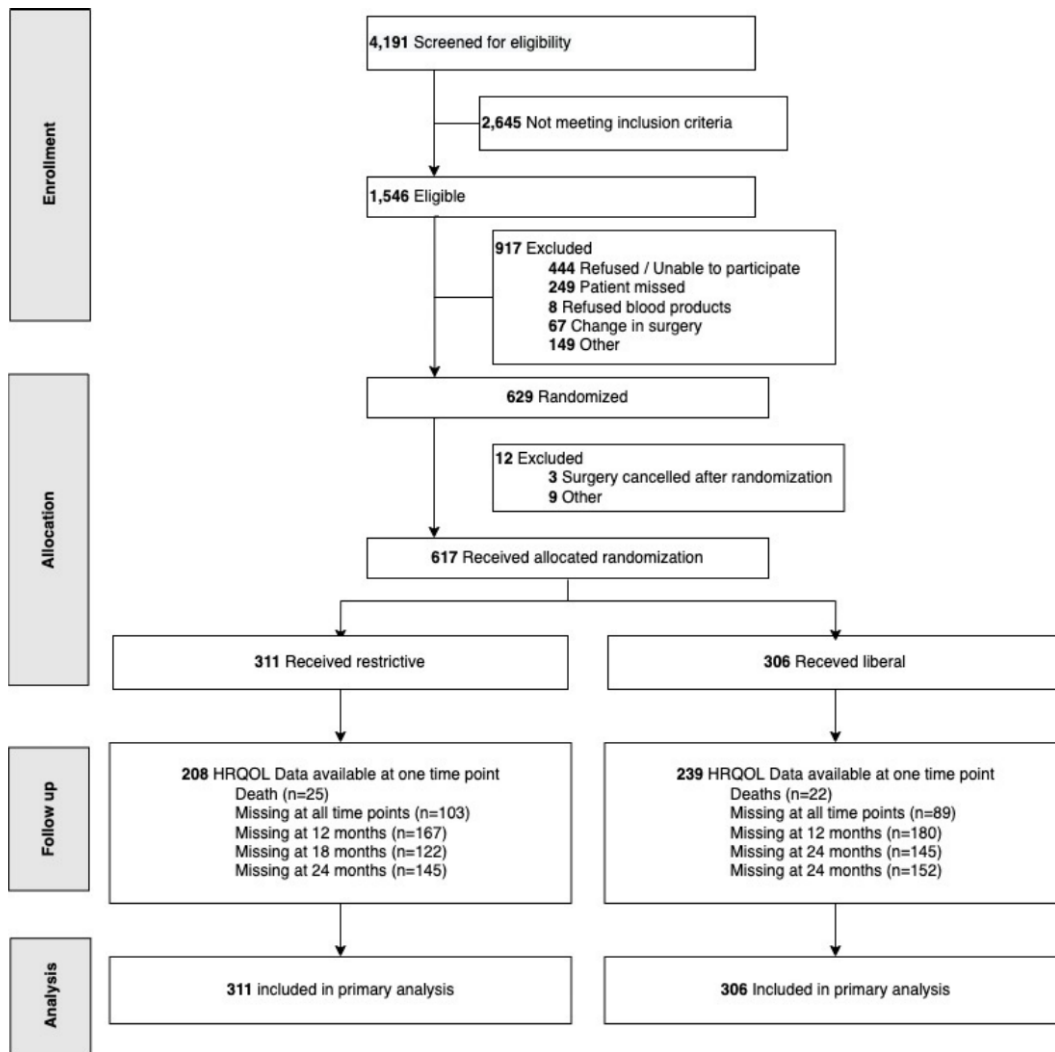
Baseline characteristics amongst patients randomized to receive a restrictive vs. liberal red blood cell transfusion strategy amongst Australian patients in TRICS III<sup>b</sup>. All values are expressed as mean ±standard deviation unless otherwise specified. CABG = coronary artery bypass graft; CPB = cardiopulmonary bypass; PCC = prothrombin complex concentrate

- a) Nashef SA, Roques F, Michel P, et al. European system for cardiac operative risk evaluation (EuroSCORE). Eur J Cardiothorac Surg. Jul 1999;16(1):9-13
- b) Transfusion Requirements in Cardiac Surgery III

**Table 2: Difference in HRQOL normalized to Australian and US values after multiple imputation.**

	<b>Estimated Difference in Mean MCS: Restrictive – Liberal (one-sided 95% CI)</b>		<b>Estimated Difference in Mean PCS: Restrictive – Liberal (one-sided 95% CI)</b>
		<b>Australia</b>	
<b>Time</b>			
12 months	-2.6 (-5.5, ∞)		-2.0 (-4.4, ∞)
18 months	-1.7 (-4.6, ∞)		-0.9 (-3.5, ∞)
24 months	-0.9 (-3.8, ∞)		-1.31 (-3.9, ∞)
		<b>US</b>	
<b>Time</b>			
12 months	-2.6 (-5.1, ∞)		-1.8 (-4.2, ∞)
18 months	-2.0 (-4.6, ∞)		-1.1 (-3.6, ∞)
24 months	-0.9 (-3.7, ∞)		-1.5 (-4.0, ∞)

HRQOL was measured using the SF-36v2. The estimated difference in the two summary scores of SF-36v2 (the MCS and PCS) between randomized groups have been derived using Australian and US (United States) population norms, and tabled after multiple imputation. They are mathematically expressed as restrictive minus liberal values with a one-sided 95% CI (confidence interval) provided. FMI for MCS at 12,18 and 24 months for Australian norms was 0.38, 0.30, 0.23 respectively; and for US norms was 0.30, 0.23, 0.23 respectively. FMI for PCS at 12, 18 and 24 months for Australian norms was 0.30, 0.27, 0.25 respectively; and for US norms was 0.31, 0.26, 0.26 respectively. HRQOL = Health-related quality of life; SF36v2 = 36-item Short Form survey version 2; MCS = Mental Component Score; PCS = Physical Component Score; FMI = Fraction of Missing Information.



**Figure 1**

**Figure 1: Flow diagram of patients analyzed.**

HRQOL data available (assumed to be zero for death) in 208/311 patients randomized to receive a restrictive red cell transfusion and in 217/306 patients randomized to receive a liberal red cell transfusion. HRQOL = health-related quality of life.

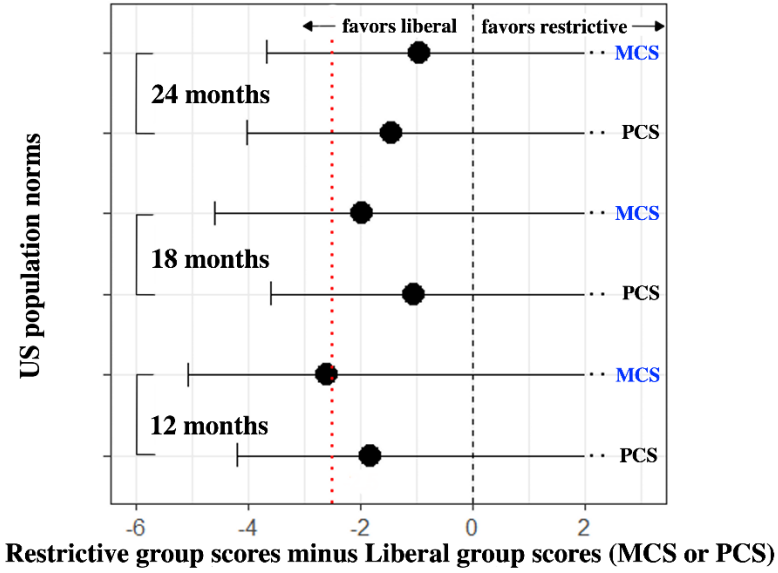
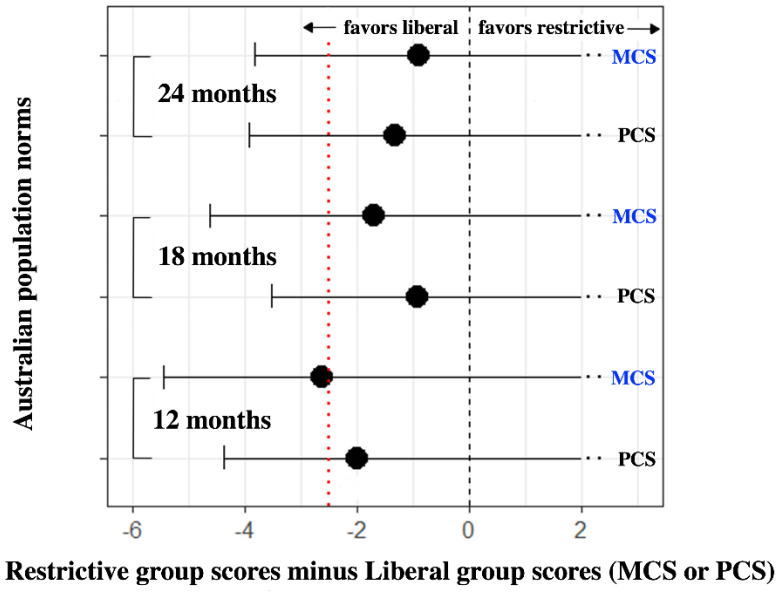


Figure 2

**Figure 2: Difference in mean scores for MCS and PCS (restrictive group minus liberal group) using Australian and US population norms after multiple imputation.**

The estimated difference with one-sided 95% confidence interval between the mean scores for MCS and PCS between randomized groups are visually displayed. Changes over time are represented on the y-axis. Differences are calculated as restrictive group scores minus liberal group scores, after multiple imputation for missing values. MCS and PCS values are summary scores of HRQOL obtained by the SF36v2, which require scaling based on population norms to provide a value between 0-100. In Australia, a mean (SD) value of 50.27 (9.70) for PCS and 52.92 (10.17) for MCS has been reported, whereas a mean (SD) of 50 (10) is used for both PCS and MCS in US populations. The dotted red line denotes the non-inferiority limit of -2.5. MCS = Mental Component Score; PCS = Physical Component Score; HRQOL = health-related quality of life; SF-36v2 = 36-item Short Form survey version 2.

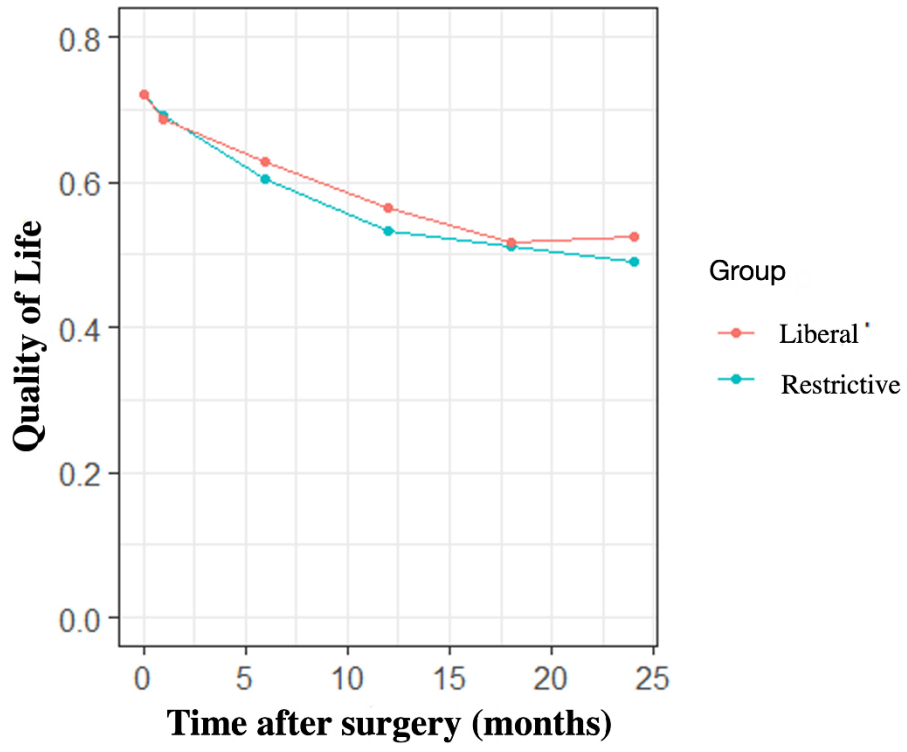
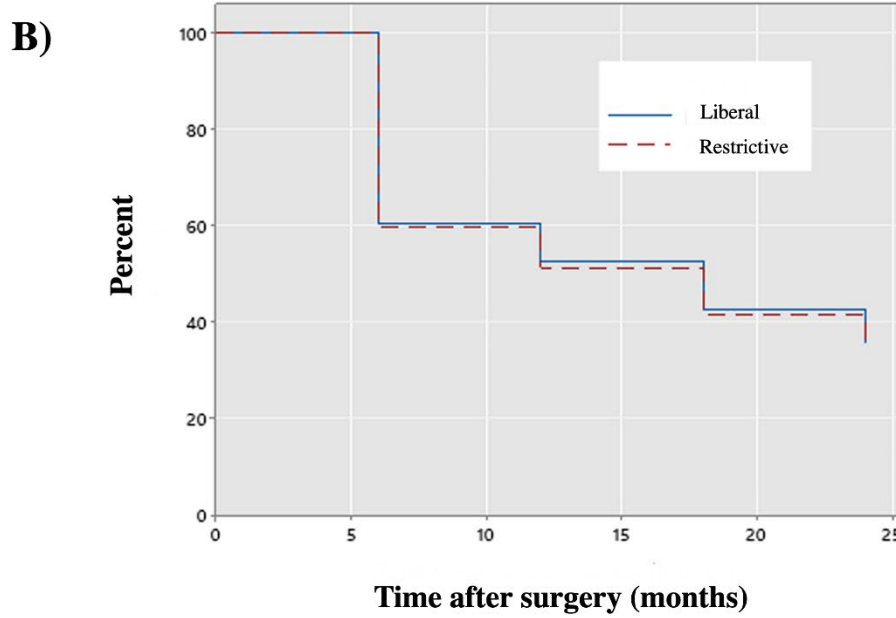
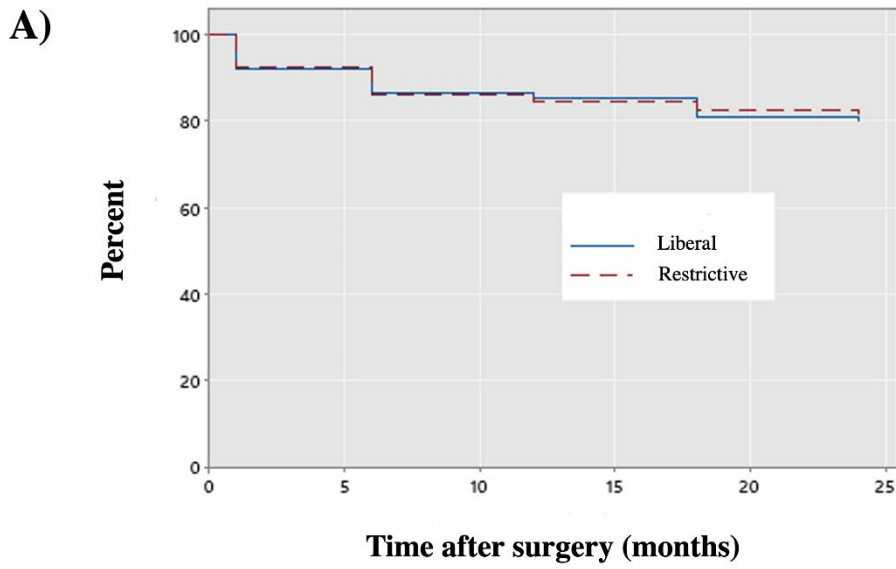


Figure 3

**Figure 3: QALYs amongst restrictive vs. liberal red cell transfusion groups over time.**

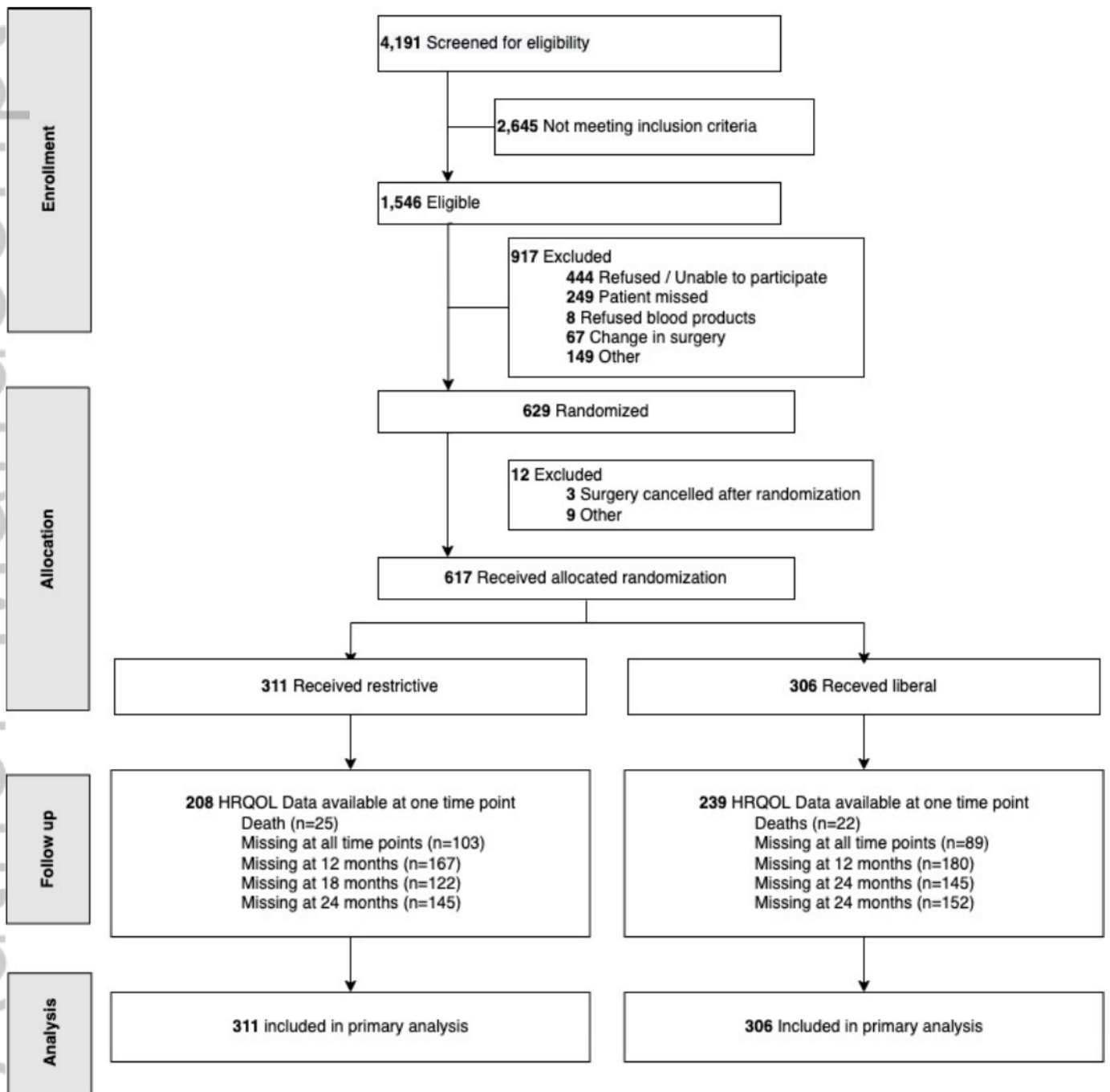
Quality of life is represented as a unitless value between 0 and 1 and derived after conversion of SF-36v2 data (see text for details). The area under the curve of quality of life over time represents quality-adjusted life years (QALY). Over the 24 month study period, the difference in QALYs (restrictive group minus liberal group) was -0.038 (95% CI -0.103 to 0.028),  $p=0.268$ .



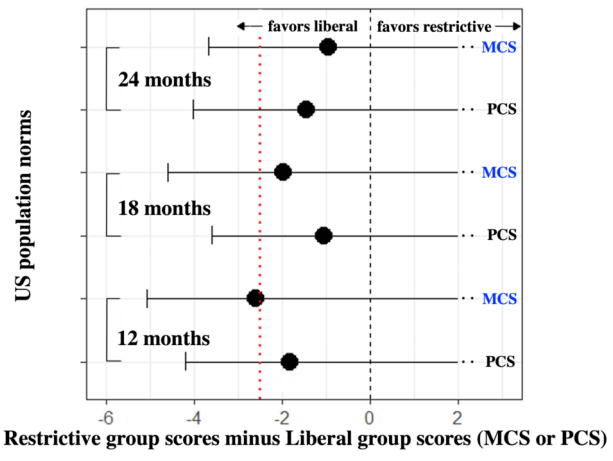
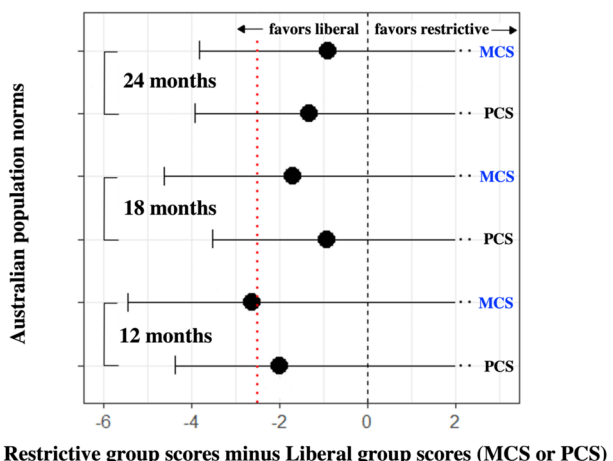
**Figure 4**

**Figure 4. Pooled composite outcomes: restrictive vs, liberal transfusion groups over time.**

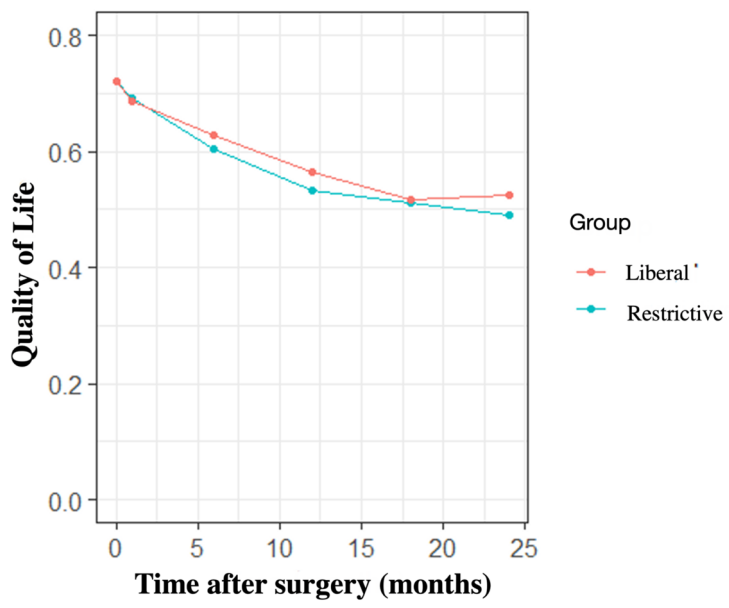
Estimated outcome-free survival (in percentage) for **A)** original pooled composite outcome and **B)** expanded pooled composite outcome between liberal (continuous line) and restrictive (broken line) transfusion groups over time. There was no statistical difference using log-rank test between groups for the original pooled composite outcome ( $p=0.733$ ); or for the expanded pooled composite outcome using log-rank test ( $p=0.772$ ).



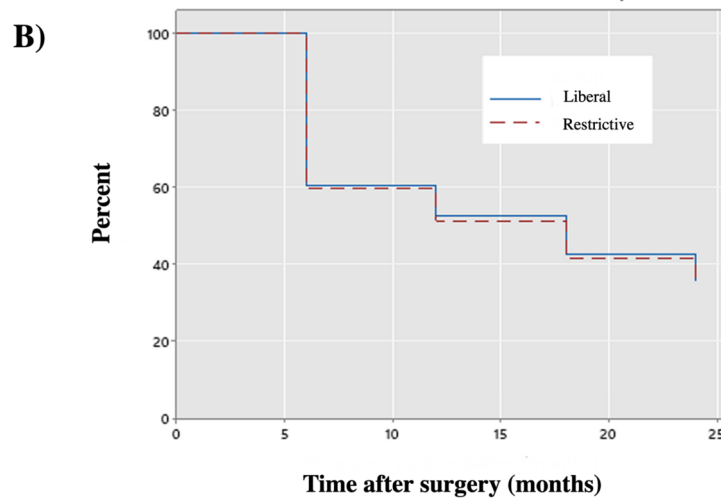
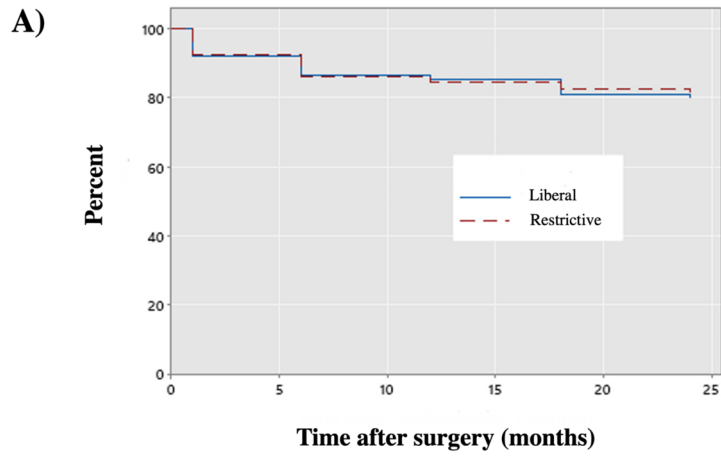
TRF\_17084\_@Figure 1.tif



TRF\_17084\_@Figure 2.tiff



TRF\_17084\_@Figure 3.tiff



TRF\_17084\_@Figure 4.tif