



Minerva Access is the Institutional Repository of The University of Melbourne

Author/s:

Scheffer, IE;French, J;Valente, KD;Auvin, S;Cross, JH;Specchio, N

Title:

Operational definition of developmental and epileptic encephalopathies to underpin the design of therapeutic trials

Date:

2025-04-01

Citation:

Scheffer, I. E., French, J., Valente, K. D., Auvin, S., Cross, J. H. & Specchio, N. (2025). Operational definition of developmental and epileptic encephalopathies to underpin the design of therapeutic trials. *Epilepsia*, 66 (4), pp.1014-1023. <https://doi.org/10.1111/epi.18265>.

Persistent Link:

<https://hdl.handle.net/11343/360016>

License:

[CC BY-NC-ND](#)

## SPECIAL REPORT

# Operational definition of developmental and epileptic encephalopathies to underpin the design of therapeutic trials

Ingrid E. Scheffer<sup>1,2,3</sup>  | Jacqueline French<sup>4</sup>  | Kette D. Valente<sup>5</sup>  |  
Stéphane Auvin<sup>6,7,8</sup>  | J. Helen Cross<sup>9</sup>  | Nicola Specchio<sup>10,11</sup> 

<sup>1</sup>Epilepsy Research Centre, Austin Health, The University of Melbourne, Melbourne, Victoria, Australia

<sup>2</sup>Florey and Murdoch Children's Research Institutes, Melbourne, Victoria, Australia

<sup>3</sup>Department of Paediatrics, Royal Children's Hospital, The University of Melbourne, Parkville, Victoria, Australia

<sup>4</sup>Comprehensive Epilepsy Center, New York University Grossman School of Medicine, New York City, New York, USA

<sup>5</sup>Epilepsy Research Center, University of São Paulo Faculty of Medicine, São Paulo, Brazil

<sup>6</sup>Pediatric Neurology Department, CRMR Epilepsies Rares, Member of ERN EpiCARE, APHP, Robert Debré University Hospital, Paris, France

<sup>7</sup>Université Paris Cité, INSERM NeuroDiderot, Paris, France

<sup>8</sup>Institut Universitaire de France (IUF), Paris, France

<sup>9</sup>University College London (UCL) National Institute for Health and Care Research (NIHR) Biomedical Research Centres (BRC) Great Ormond Street Institute of Child Health, London, UK

<sup>10</sup>Neurology, Epilepsy and Movement Disorders, Bambino Gesù Children's Hospital, IRCCS, Full Member of European Reference Network, EpiCARE, Rome, Italy

<sup>11</sup>University Hospitals KU Leuven, Leuven, Belgium

## Correspondence

Nicola Specchio, Neurology, Epilepsy and Movement Disorders, Bambino Gesù Children's Hospital, IRCCS, Full Member of European Reference Network, EpiCARE, Rome, Italy.  
Email: [nicola.specchio@opbg.net](mailto:nicola.specchio@opbg.net)

Ingrid E. Scheffer, Epilepsy Research Centre, Austin Health, The University of Melbourne, Melbourne, VIC, Australia.  
Email: [scheffer@unimelb.edu.au](mailto:scheffer@unimelb.edu.au)

## Abstract

Developmental and epileptic encephalopathies (DEEs) are the most severe group of epilepsies, characterized by drug-resistant seizures and developmental slowing or regression. DEEs encompass many epilepsy syndromes, although not all patients with a DEE can be classified into a specific syndrome. Our understanding of the etiologies of DEEs has been revolutionized with next-generation sequencing, with more than 900 genes implicated, in addition to structural causes. It is therefore now possible to consider precision medicine and novel therapeutic approaches for these devastating diseases with trials of repurposed and new drugs, including gene therapies. Trials are being designed to target either DEE diseases more broadly, specific DEE syndromes, or specific genetic DEEs. To serve this purpose, a clear operational definition of DEEs is needed to ensure that appropriate patients are selected for trials with precisely defined, targeted outcome measures. Herein we propose the operational definition of DEEs to set the stage for the development of DEE therapies.

This is an open access article under the terms of the [Creative Commons Attribution-NonCommercial-NoDerivs](https://creativecommons.org/licenses/by-nc-nd/4.0/) License, which permits use and distribution in any medium, provided the original work is properly cited, the use is non-commercial and no modifications or adaptations are made.

© 2025 The Author(s). *Epilepsia* published by Wiley Periodicals LLC on behalf of International League Against Epilepsy.

**KEYWORDS**

developmental and epileptic encephalopathies, epilepsy, operational definition, precision medicine, trials

**1 | INTRODUCTION**

There is growing recognition of the urgent unmet need to improve outcomes for patients with the most severe group of epilepsies: developmental and epileptic encephalopathies (DEEs).<sup>1</sup> For the first time in the history of epilepsy, we are at a pivotal point where we can begin to tackle therapeutic management of DEEs in a targeted manner based on their neurobiology. Clear operational definitions of DEEs are needed to enable structured approaches to trials of novel antiseizure medications (ASMs) or repurposed therapies, including precision therapies, to ensure a robust framework to determine efficacy, safety, and tolerability.

The term “developmental and epileptic encephalopathy” was coined in 2017, encompassing two concepts, and building on the definition of an epileptic encephalopathy.<sup>1</sup> An epileptic encephalopathy refers to epileptic seizures in the setting of frequent epileptiform activity on electroencephalography (EEG) that result in developmental slowing or regression.<sup>2</sup> The developmental encephalopathy component of a DEE refers to the developmental consequences of the underlying etiology, which independently contribute to developmental impairment. If the DEE has onset in the neonatal period, it is usually impossible to tease apart these two components, that is, the developmental encephalopathy from the epileptic encephalopathy. However, if onset occurs in infancy or childhood, there may be a clear temporal separation between the developmental encephalopathy (slow development) and the adverse developmental consequences of a superimposed epileptic encephalopathy.

Although many well-established epilepsy syndromes are DEEs, a substantial number of patients with a DEE do not meet criteria for a known syndrome.<sup>3–6</sup> This means that recognizing and diagnosing a DEE is essential to ensure that patients are promptly offered appropriate therapies with the potential to ameliorate outcomes.

DEE syndromes are rarely homogeneous from an etiological perspective. One example, Dravet syndrome, is relatively homogeneous, as more than 90% of individuals have a pathogenic variant in *SCN1A*, the gene encoding the alpha-1 subunit of the sodium channel.<sup>7</sup> There are, however, numerous other genes that have been associated with Dravet-like phenotypes,<sup>8</sup> where subtle phenotypic features may aid distinction between different etiologies,

**Key points**

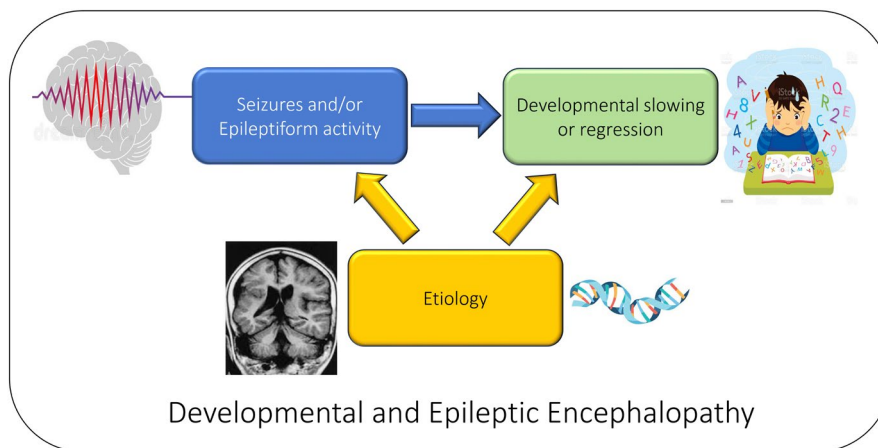
- Developmental and epileptic encephalopathies (DEEs) are severe epilepsies with drug-resistant seizures and developmental slowing or regression.
- Over 900 genes and structural causes are linked to DEEs, thanks to next-generation sequencing.
- Precision medicine offers new hope, including repurposed drugs and gene therapies for DEEs.
- Trials target broad DEEs, specific syndromes, or genetic causes with precise outcome measures.
- A clear operational definition of DEEs is crucial for effective therapy development.

such as the classical clustering of febrile seizures in *PCDH19* clustering epilepsy.<sup>9</sup>

In contrast, the majority of epilepsy syndromes are etiologically heterogeneous such as Lennox–Gastaut syndrome, which has many acquired and genetic causes.<sup>10</sup> Where an acquired cause has been identified, it may also have an underlying genetic basis.<sup>11</sup> For the rare DEE syndrome of epilepsy of infancy with migrating focal seizures, more than 30 genes have been implicated including genes following dominant, recessive, and X-linked inheritance patterns, with a third of patients yet to have their etiology identified.<sup>12</sup>

There are >900 genes of major effect that cause DEEs,<sup>13</sup> in addition to acquired etiologies.<sup>14,15</sup> There is even greater complexity, however, as most genes are associated with a phenotypic spectrum, which is often determined by the functional impact of the pathogenic variant. One of the most important groups of genes implicated in DEEs are genes encoding ion channels. Their phenotypic spectrum is often explained by gain or loss of ion channel function,<sup>16</sup> or even mixed functional effects, which adds another layer of complexity with regard to treatment approaches. Thus, treatment approaches need to target the predominant functional effect and mitigate the risk that overtreatment may lead to the opposite functional phenotype, which may be just as concerning. This emphasizes the need for carefully constructed trials to detect whether novel therapies positively or negatively influence long-term outcomes.

With the marked increase in recognition and diagnosis of DEEs in the last decade, underpinned by molecular



**FIGURE 1** Critical components that define developmental and epileptic encephalopathy (DEE). These include: (1) the presence of seizures and/or epileptiform activity, which contribute to or exacerbate the neurological condition; (2) evidence of developmental slowing or regression, indicating an impact on cognitive and motor functions as a result of the condition; and (3) identification of an underlying etiology, which may include genetic, structural, metabolic, or other factors contributing to the disorder, and which play a major role on both epilepsy and developmental slowing or regression. This framework emphasizes the interplay between epileptiform activity and developmental impairment, underscoring the complexity of diagnosing and understanding DEE.

genetic insights, this group of diseases is considerably more prevalent than previously appreciated. A recent epidemiological study, based on EEG ascertainment in the Wellington region of New Zealand, found a cumulative incidence for DEEs of 1 in 590 children presenting under age 16 years, with those under age 3 years forming the largest group.<sup>4</sup> This confirmed findings of a prospective epidemiological study in Scotland that found an estimated incidence of DEEs of 86.1/100 000 children (95% confidence interval [CI] 72.7–101.3) with onset by 3 years of age.<sup>17</sup>

The diagnosis of DEEs has transformed in recent years with increasing understanding that treatment should focus not only on improving seizure control, but also on addressing all other features of these multimorbidity diseases. Morbidities include developmental delay and regression resulting in intellectual disability; psychiatric features including autism spectrum disorder, mood disorders, anxiety, and psychosis; gastrointestinal, musculoskeletal, respiratory, and cardiac manifestations, together with a considerably increased mortality rate.<sup>18</sup> Different morbidities may emerge in adult life and become the major focus of management, such as psychosis in women with *PCDH19* clustering epilepsy<sup>19</sup> and dysphagia, scoliosis, and incontinence in individuals with Dravet syndrome.<sup>20</sup> Novel therapies should aim to address both seizure and non-seizure outcomes, including all morbidities whenever possible.

Management of DEEs has centered around seizure type, adopting similar approaches to treatment of epilepsy used more broadly in the population. However, seizures in DEEs are often drug resistant and frequently encompass several types, including both generalized

and focal seizures.<sup>1</sup> This means that broad spectrum agents are needed. Moreover, in some cases, we need to treat the ongoing epileptiform activity, not just the seizures. Although direct evidence is limited and likely to be syndrome specific, clinical practice suggests that treating epileptiform activity in DEEs may be associated with cognitive benefits and reduced seizure burden in some individuals. This is well illustrated by Landau-Kleffner syndrome, which falls under developmental and epileptic encephalopathy with spike-wave activation in sleep (DEE-SWAS), where only 70% of children have seizures,<sup>6</sup> but all show regression in receptive and expressive speech, and may regress in other domains. However, the impact of therapies of benefit in patients with DEEs often do not normalize the EEG, despite developmental gains.

The recent designation of breakthrough therapy status for Bexicaserin (LP352, Longboard Pharmaceuticals), with a trial for patients with any type of DEE, highlights a significant milestone: for the first time, a regulatory body (the U.S. Food and Drug Administration [FDA]) has endorsed a trial for all DEEs. This recognition underscores the pressing need for a consistent definition of DEE to guide emerging trials and therapeutic development, enabling the concept of a “basket” trial for all DEEs. As the field advances, we will need to establish a coherent framework that captures the characteristics of subtypes of DEEs for more targeted trials. A consistent definition of DEEs will pave the way for standardized trial designs, allowing comparability across studies.

Here, we operationalize the definition of DEEs to underpin an approach to designing clinical trials for

patients with DEEs, acknowledging that this is a work-in-progress as our understanding of these diseases and mechanisms continues to advance. Critically, the future therapeutic aim for the DEEs should be to address all features of the disease, a much broader remit than is usually considered for individuals with seizures. This is a stepwise process as we carefully examine the effects of novel treatments on both seizure and non-seizure outcomes.

## 2 | OPERATIONALIZING THE DEFINITION OF DEEs

A diagnosis of a DEE includes the following criteria (Figure 1):

1. Frequent seizures and/or EEG studies showing frequent epileptiform discharges
2. History of developmental slowing or regression
3. The underlying etiology also contributes to developmental impairment

### 2.1 | Frequent seizures and/or EEG showing frequent epileptiform discharges

Patients often have multiple seizure types, ranging from epileptic spasms to tonic, focal, and generalized seizures. Seizures are usually frequent and drug resistant; however, early in the disease, seizures may not always be frequent, as specific DEE syndromes may show a gradual evolution in seizure patterns and frequency.

EEG recordings may show abundant epileptiform discharges, which can be diffuse or multifocal, but can also be more prominent in specific regions of the brain. Distinct DEE patterns are recognized, such as hypsarhythmia, burst-suppression, and periods of attenuation and slow spike-waves. However, in some DEEs, such as Dravet syndrome, early EEG studies may be normal or only subtly abnormal. A Dravet syndrome diagnosis can still be made early in life in the context of the appropriate clinical phenotype and etiology (e.g., recurrent hemiclonic or generalized tonic-clonic seizures and a *SCN1A* pathogenic variant) even when the EEG results are normal. Yet, in other DEE syndromes, such as early infantile DEE (EIDEE), epileptiform activity on EEG is expected early in the disease course. Subclinical ictal rhythms may also be observed. In certain cases, rigorous video-EEG analysis may be needed to distinguish between ictal and interictal discharges. Background EEG abnormalities are nonspecific and vary widely across DEEs; a normal background does not necessarily

exclude a DEE diagnosis in a patient with established disease. Although EEG findings are supportive, they should be considered in the context of the patient's overall clinical picture and underlying etiology.

### 2.2 | History of developmental slowing or regression

Developmental slowing or regression is an essential component of a DEE, and arises due to the ongoing impact of the frequent epileptiform activity and/or seizures. The degree of slowing depends on the etiology; for some patients, it can progress slowly and quite insidiously over time, whereas for others, it may be evident soon after seizure onset or even before. Regardless of whether development is normal or delayed before seizure onset, DEEs are often slowly progressive diseases over time. Specific DEEs, such as Dravet syndrome, typically show developmental slowing from 1 to 2 years of age; however, the slowing often becomes evident before epileptiform activity is seen, due to the underlying *SCN1A* pathogenic variant. Although a change in the child's developmental trajectory (slowing or regression) is a key characteristic, it does not always occur in concert with epileptiform abnormalities on EEG or frequent seizures.

Conversely, children with an epileptic encephalopathy, but not a DEE, may ultimately have normal cognition. These patients have normal cognitive function and developmental milestones before the onset of seizures and show slowing during the time of their epileptic encephalopathy. Their development improves with resolution of the epileptic encephalopathy and their long-term outcome may ultimately be in the normal range.

### 2.3 | The underlying etiology also contributes to developmental impairment

The definition of a DEE encompasses the concept that the underlying etiology contributes to developmental slowing or regression, further impacted by both epileptic seizures and epileptiform activity. Even if seizures are controlled with medication or cease spontaneously, patients still exhibit developmental impairment over time. Well-established genetic etiologies, such as sodium and potassium channelopathies, cause intellectual disability and autism spectrum disorder without epilepsy or epileptiform activity, proving that these etiologies can cause developmental impairment in their own right. In 50% of cases, the etiology of DEEs is currently unknown; however, DEEs can still be diagnosed on the basis of clinical features.

Although a particular pathogenic variant in a specific gene may be highly predictive of a DEE, diagnosis of the electroclinical phenotype remains critical for an accurate DEE diagnosis. When the identified genetic variant is well established to cause DEE and has been associated frequently with a specific DEE phenotype, genetic findings can support an early diagnosis in the correct clinical context, even before the EEG shows the typical features or developmental slowing has occurred (e.g., *SCN1A* truncation variant in a 10-month-old baby with two episodes of febrile status epilepticus). However, for genes for which a variant is novel, the phenotypic spectrum of the gene is not well described, or the patient does not have classical features, a DEE diagnosis should not be made on the basis of a likely pathogenic variant.

### 3 | DESIGNING THERAPEUTIC TRIALS FOR DEEs

Trial design should capture all aspects of the disease and focus on those of greatest importance. Trial design should be tailored to the disease in question, the trial drug, and its mechanism(s) of action. Trial inclusion criteria will depend on the age of the patients being studied, their features (see [Box 1](#)), contraindications to the trial drug (e.g., endocrine abnormalities, past history of psychosis or depression) and their precise etiology, where relevant. DEEs are often slowly progressive in nature, with clinical, EEG, and neuroimaging features that evolve or plateau over time, and can usually be distinguished from neurodegenerative diseases where more rapid progression is seen, associated with neuronal death. Trials may target particular features of a DEE, such as seizure outcome or a specific morbidity, to determine effectiveness in treating that particular feature.

Ideally, precision therapies will directly address the underlying mechanism of the DEE in each patient. This will require different trial designs that examine outcomes more broadly. Some trials, such as gene therapies, will be challenging to execute as they will require careful, comprehensive, and long-term surveillance to ensure that improvement is robust, enduring, and that later adverse consequences do not emerge in adult life. Such trials are in early phases of development in the DEEs (see <https://clinicaltrials.gov/>), and currently have an appropriate focus on the detection of subtle gains in individuals who typically have profound to severe impairment. As commonly used assessment tools often have floor or ceiling effects, they do not identify subtle, yet meaningful, gains in children with DEEs. Many new tools are currently in development (e.g., Inchstone project).<sup>21</sup>

Although Class 1 evidence based on randomized placebo-controlled trials has been held as the gold standard, there is now considerable interest in other designs such as time-to-event,<sup>22</sup> n-of-1 studies,<sup>23</sup> and also comparison with natural history studies of historical cohorts (e.g., cerliponase alfa for *CLN2* disease).<sup>24</sup> Such trials have different challenges in their design, such as how long a drug should be administered in n-of-1 studies to realistically show cognitive gains.<sup>25</sup> Given the complexity of DEEs, it is also possible that specific subgroups of patients with a phenotype or genotype may benefit from a trial drug, whereas other subgroups do not.

Novel trial designs are likely to introduce new ethical dilemmas. One example is the question of whether sham intracerebroventricular or intrathecal injections are ethical for placebo-controlled gene therapy studies. There is considerable concern about the risk of sudden unexpected death in epilepsy (SUDEP) in individuals with DEEs and it is conceivable that some novel trial designs may place patients at greater risk.

It is important to recognize that most patients with DEEs are taking multiple ASMs. There has been only limited work examining whether specific drugs have synergistic or antagonistic effects, although there are notable observational studies.<sup>26,27</sup> This aspect has understandably not been the focus of pharmaceutical companies, which are interested in showing efficacy of a specific compound. In the future, trial design may incorporate more rigorous analyses of concomitant drug regimens to understand the benefits or risks of combined therapies, to determine the optimal treatment paradigm for DEEs with specific etiologies.

### 4 | METHODOLOGICAL ISSUES REGARDING ACCURATE COUNTING OF SEIZURES

The most reliable way to count seizures has long been debated. Paper diaries have been the usual means, now being replaced by digital applications, but neither is perfect. Both require diligence in recording; however, families vary in their abilities to manage this reliably and over the longer term. The types of seizures that are counted in a trial vary according to the epilepsy in question. Most commonly, convulsive seizures have been counted but, more recently, countable motor seizures have been used as the primary outcome measure to determine efficacy.<sup>28</sup> This still leaves many potentially disabling seizures that have not been considered in DEE trials.

Although convulsive seizures appear more straightforward to count, they often have a predilection to occur in

**BOX 1 Key features of developmental and epileptic encephalopathy (DEE), and clinical trial considerations including inclusion criteria and endpoints.**

Features	Details to consider
<b>DEE definition</b>	
Frequent seizures (in most patients)	Frequency depends on DEE syndrome and/or etiology being studied
Epileptiform activity on EEG	Amount and type depend on DEE syndrome and/or etiology being studied
Development slowing or regression	
<b>Possible inclusion criteria for trial</b>	
Age range of patients	Depends on trial design, trial drug, outcomes
Seizures	Type(s) Methods of counting seizure Frequency Seizure duration
EEG features – Epileptiform abnormalities	Frequency Type
Developmental delay evolving to intellectual disability	Severity Cognitive profile ADHD
Psychiatric features	Autism spectrum disorder Behavioural problems Psychosis Mood disorder
Other systemic features	Depends on disease, trial drug (cardiac, musculoskeletal, gastrointestinal)
<b>Possible core endpoints for trials</b>	
Change in seizure frequency	Reduction from baseline frequency, seizure-free days, time to event, depending on design
Change in development	Slowing/gains/regression (improvement in adaptive functions)
Frequency of use of rescue medication	Benzodiazepines
Hospitalizations	Due to seizures, or to other medical problems
Quality of life	Caregivers Clinicians
Mortality	Causes (SUDEP, pneumonia, accidental, acute encephalopathy)

sleep and may be subtle and easily missed. With the advent of cameras in patients' bedrooms, more seizures are identified but can still be hard to detect if movements are not obvious. Tonic seizures, in particular, can occur very frequently, as in Lennox–Gastaut syndrome, and may simply comprise eye opening from sleep accompanied by a clear ictal rhythm on EEG. In reality, counting tonic seizures in sleep is fraught and only reliable with video-EEG monitoring, which is usually not available in an outpatient trial setting. Seizure

counting is further compounded by patients showing considerable nightly fluctuation depending on the patient, their disease stage and seizure triggers, such as illness.

Other seizure types that are also challenging to accurately count include absence seizures (typical, atypical, myoclonic or with eyelid myoclonia<sup>29</sup>), myoclonic seizures, and epileptic spasms. EEG studies in children with childhood absence epilepsy show that the number of seizures is vastly underestimated by parental count compared

with video-EEG studies.<sup>30</sup> For absence seizures with eyelid myoclonia, families often stop “seeing” seizures, which may occur every few minutes with eye closure, every day, and come to be regarded as part of the patient’s “normal functioning.” However, each seizure is accompanied by generalized spike–wave activity on EEG, which interferes with a patient’s cognition and learning. Various methods of counting absence seizures have been proposed, such as the number of seizures occurring in a set time period each day, for example, 15 min at dinner when the patient is closely observed, with no method proven to be adequate for a true count of seizure frequency.

Similarly, epileptic spasms, the key seizure type in infantile epileptic spasms syndrome and often seen in other infantile-onset DEEs,<sup>5</sup> can be hard to recognize. These very brief (<3s) seizures usually cluster and may begin with a subtle movement such as a facial grimace or eye deviation, typically building in motor manifestations over one or a few minutes, before fading away. Parents may identify seizures when others do not recognize them. Trials typically count the number of clusters of epileptic spasms per day; this strategy of counting clusters may also be relevant to other diseases, such as *PCDH19* clustering epilepsy. Equally these seizure clusters can easily be missed in sleep, even with video cameras recording the patient. Isolated epileptic spasms can be even harder to document.

Furthermore, the aim of trials should be to stop all epileptic spasms, as a 50% reduction is not meaningful.<sup>31</sup>

Video-EEG studies for 1–2 days are expensive but can provide a more reliable estimate of seizure frequency, with the caveat that seizure frequency fluctuates in all individuals. Video-EEG monitoring improves accuracy by capturing all seizure types and providing continuous, objective monitoring, which is especially critical in patients with DEEs where atypical and subtle seizure types are common,<sup>32</sup> and parent- or caregiver-reported seizure counts may be inaccurate.<sup>33</sup> Long-term video-EEG studies in the setting of a drug trial are not viable for patients’ lives; however, they are increasingly being used at specific time points in trials to provide an accurate and objective seizure count, typically as an exploratory endpoint. This strategy has not, however, always proven helpful, as counting absence seizures may be impossible due to an active interictal EEG.<sup>34,35</sup> Furthermore, the place of EEG studies in analysis of non-seizure outcomes is yet to be established, as it is unclear if findings will correlate with changes in cognition or other parameters.

## 5 | CONSUMER PERSPECTIVES

It is increasingly recognized that consumer-driven perspectives should be integrated in the trial design of new

therapies.<sup>36</sup> It is crucial to prioritize the perspectives of patients and families given the multimorbidity nature of DEEs. Other medical problems, such as behavioral problems or intellectual disability, often eclipse seizures as their primary concern. Historically, clinical trials in epilepsy have focused on seizure frequency as the primary outcome. This approach may need to be reconsidered as trials of novel or repurposed compounds are devised with a focus on patient-centered outcome measures (PCOMs). PCOMs are personalized, structured, and measurable goals identified by individuals with complex health conditions or their carers, based on what matters most to them at the time.<sup>37</sup> The aim of PCOMs is to place patients, their families, and caregivers at the center of health assessment decisions, rather than leaving these assessments solely to clinicians.

With the tantalizing promise of precision approaches, many patient and family groups, physicians, and pharmaceutical companies are focused on developing robust clinical trials. Our operational definition of DEEs will guide trial designs facilitating appropriate recruitment. Looking to the future, endpoints for DEE trials should move from seizure outcomes alone to broader outcomes, incorporating many aspects of these multimorbid disorders, and applying a holistic lens to ensure that novel therapies improve patients’ lives.

## AUTHOR CONTRIBUTIONS

Conceptualization, methodology: I.E.S., N.S., J.F., S.A., J.H.C., and K.D.V.; writing-original draft preparation: I.E.S. and N.S.; writing-review and editing: J.F., S.A., J.H.C., and K.D.V. All authors have read and agreed to the published version of the manuscript.

## ACKNOWLEDGMENTS

N.S. was supported also by the Italian Ministry of Health with Current Research Funds. Open access funding provided by BIBLIOSAN.

## CONFLICT OF INTEREST STATEMENT

I.E.S. has served on scientific advisory boards for BioMarin, Chiesi, Eisai, Encoded Therapeutics, GlaxoSmithKline, Knopp Biosciences, Nutricia, Rogcon, Takeda Pharmaceuticals, UCB, Xenon Pharmaceuticals, and Cerecin; has received speaker honoraria from GlaxoSmithKline, UCB, BioMarin, Biocodex, Chiesi, Liva Nova, Nutricia, Zuellig Pharma, Stoke Therapeutics, and Eisai; has received funding for travel from UCB, Biocodex, GlaxoSmithKline, Biomarin, Encoded Therapeutics, Stoke Therapeutics, and Eisai; has served as an investigator for Anavex Life Sciences, Cerevel Therapeutics, Eisai, Encoded Therapeutics, EpiMinder Inc., Epygenyx, ES-Therapeutics, GW Pharma, Marinus, Neurocrine BioSciences, Ovid

Therapeutics, Takeda Pharmaceuticals, UCB, Ultragenyx, Xenon Pharmaceuticals, Zogenix, and Zynerva; and has consulted for Care Beyond Diagnosis, Epilepsy Consortium, Atheneum Partners, Ovid Therapeutics, UCB, Zynerva Pharmaceuticals, BioMarin, Encoded Therapeutics, and Biohaven Pharmaceuticals. J.A.F. receives salary support from the Epilepsy Foundation and for consulting work and/or attending Scientific Advisory Boards on behalf of the Epilepsy Study Consortium for Adamas, Aeonian/Aeovian, Alterity Therapeutics Limited, Anavex, Arkin Holdings, Arvelle Therapeutics, Inc., Athenen Therapeutics/Carnot Pharma, Autifony Therapeutics Limited, Baergic Bio, Biogen, Biohaven Pharmaceuticals, BioMarin Pharmaceutical Inc., BioXcel Therapeutics, Bloom Science Inc., BridgeBio Pharma Inc., Cavion, Cerebral Therapeutics, Cerevel, Clinical Education Alliance, Coda Biotherapeutics, Corlieve Therapeutics, Crossject, CuroNZ, Eisai, Eliem Therapeutics, Encoded Therapeutics, Engage Therapeutics, Engrail, Epalex, Epihunter, Epiminder, Epitel Inc., Equilibre BioPharmaceuticals, Fortress Biotech, Greenwich Biosciences, Grin Therapeutics, GW Pharma, Janssen Pharmaceutica, Jazz Pharmaceuticals, Knopp Biosciences, Lipocine, LivaNova, Longboard Pharmaceuticals, Lundbeck, Marinus, Mend Neuroscience, Merck, NeuCyte Inc., Neumirna Therapeutics, Neurocrine, Neuroelectrics USA Corporation, Neuropace, NxGen Medicine Inc., Ono Pharmaceutical Co., Otsuka Pharmaceutical Development, Ovid Therapeutics Inc., Passage Bio, Pfizer, Praxis, PureTech LTY Inc., Rafa Laboratories Ltd., Redpin, Sage, SK Life Science, Sofinnova, Stoke, Supernus, Synergia Medical, Takeda, UCB, Ventus Therapeutics, West Therapeutic Development, Xenon, Xeris, Zogenix, and Zynerva. J.A.F. has also received research support from the Epilepsy Study Consortium (Funded by Andrews Foundation, Eisai, Engage, Lundbeck, Pfizer, SK Life Science, Sunovion, UCB, and Vogelstein Foundation), the Epilepsy Study Consortium/Epilepsy Foundation (funded by UCB), GW/FACES, and the National Institute of Neurological Disorders and Stroke [NINDS]). She is on the editorial boards of *Lancet Neurology* and *Neurology Today*, and she is Chief Medical/Innovation Officer for the Epilepsy Foundation. She has received travel reimbursement related to research, advisory meetings, or presentation of results at scientific meetings from the Epilepsy Study Consortium, the Epilepsy Foundation, Arvelle, Biogen, Cerevel, Clinical Education Alliance, Engage, Lundbeck, NeuCyte, Inc., Neurocrine, Otsuka, Praxis, Sage, UCB, Xenon, and Zogenix. K.D.V. received research grants from Sao Paulo Research Foundation (FAPESP) supported by the State of São Paulo and CNPq (Conselho Nacional de Desenvolvimento Científico e Tecnológico), supported by the Federal Government. She has consulted

for UCB Pharma, Takeda, Abbot, PTC, United Medical, ACHE, Prati-Donaduzzi, Eurofarma, EMS, and Zodiac Pharma from outside the submitted work. She has received unrestricted educational and research support from Prati-Donaduzzi Pharma. She is a member of the editorial boards of the following journals: (1) *Epilepsy & Behavior* (Associate Editor), (2) *Frontiers in Neurology—Epilepsy* (Associate Editor), and (3) *Frontiers in Pediatric Neurology*. She receives an honorarium for her work as an Associate Editor of *Epilepsy & Behavior*. S.A. has served as a consultant or received honoraria for lectures from Biocodex, Biomarin, Encoded, Eisai, Grin therapeutics, Jazz Pharmaceuticals, Neuraxpharm, Nutricia, Orion, Proveca, Supernus, Stoke, Takeda, UCB Pharma, Xenon, and Zogenix. He has been an investigator for clinical trials for Eisai, Proveca, Takeda, and UCB Pharma. J.H.C. has received grants from Stoke Therapeutics, Ultragenyx, UCB, National Institute for Health and Care Research (NIHR), Great Ormond Street Hospital Children's Charity (GOSHCC), LifeARC, the Waterloo Foundation, and the Action Medical Research. J.H.C. has also received honoraria payments from Biocodex, Nutricia, Jazz Pharmaceuticals, Nutricia, Takeda, and UCB, all of which have been paid to University College London. N.S. has served on scientific advisory boards for GW Pharma, BioMarin, Arvelle, Marinus, and Takeda; has received speaker honoraria from Eisai, Biomarin, Livanova, and Sanofi; and has served as an investigator for Zogenix, Marinus, Biomarin, UCB, and Roche. The remaining authors have no conflicts of interest.

#### DATA AVAILABILITY STATEMENT

Data sharing not applicable to this article as no datasets were generated or analysed during the current study.

#### ETHICS STATEMENT

We confirm that we have read the Journal's position on issues involved in ethical publication and affirm that this report is consistent with those guidelines.

#### ORCID

Ingrid E. Scheffer  <https://orcid.org/0000-0002-2311-2174>

Jacqueline French  <https://orcid.org/0000-0003-2242-8027>

Kette D. Valente  <https://orcid.org/0000-0002-5008-0809>

Stéphane Auvin  <https://orcid.org/0000-0003-3874-9749>

J. Helen Cross  <https://orcid.org/0000-0001-7345-4829>

Nicola Specchio  <https://orcid.org/0000-0002-8120-0287>

#### REFERENCES

1. Scheffer IE, Berkovic S, Capovilla G, Connolly MB, French J, Guilhoto L, et al. ILAE classification of the epilepsies:

- position paper of the ILAE Commission for Classification and Terminology. *Epilepsia*. 2017;58:512–21.
2. Berg AT, Berkovic SF, Brodie MJ, Buchhalter J, Cross JH, van Emde Boas W, et al. Revised terminology and concepts for organization of seizures and epilepsies: report of the ILAE commission on classification and terminology, 2005–2009. *Epilepsia*. 2010;51:676–85.
  3. Scheffer IE, Zuberi S, Mefford HC, Guerrini R, McTague A. Developmental and epileptic encephalopathies. *Nat Rev Dis Primers*. 2024;10:61.
  4. Poke G, Stanley J, Scheffer IE, Sadleir LG. Epidemiology of developmental and epileptic encephalopathy and of intellectual disability and epilepsy in children. *Neurology*. 2023;100:e1363–e1375.
  5. Zuberi SM, Wirrell E, Yozawitz E, Wilmshurst JM, Specchio N, Riney K, et al. ILAE classification and definition of epilepsy syndromes with onset in neonates and infants: position statement by the ILAE task force on nosology and definitions. *Epilepsia*. 2022;63:1349–97.
  6. Specchio N, Wirrell EC, Scheffer IE, Nabbout R, Riney K, Samia P, et al. International league against epilepsy classification and definition of epilepsy syndromes with onset in childhood: position paper by the ILAE task force on nosology and definitions. *Epilepsia*. 2022;63:1398–442.
  7. Li W, Schneider AL, Scheffer IE. Defining Dravet syndrome: an essential pre-requisite for precision medicine trials. *Epilepsia*. 2021;62:2205–17.
  8. Steel D, Symonds JD, Zuberi SM, Brunklaus A. Dravet syndrome and its mimics: beyond *SCN1A*. *Epilepsia*. 2017;58:1807–16.
  9. Depienne C, Bouteiller D, Keren B, Cheuret E, Poirier K, Trouillard O, et al. Sporadic infantile epileptic encephalopathy caused by mutations in *PCDH19* resembles Dravet syndrome but mainly affects females. *PLoS Genet*. 2009;5:e1000381.
  10. Epi4K CEonsortium, Epilepsy Phenome/Genome Project, Allen AS, Berkovic SF, Cossette P, Delanty N, Dlugos D, et al. *De novo* mutations in epileptic encephalopathies. *Nature*. 2013;501:217–21.
  11. Guey S, Herve D. Main features of COL4A1-COL4A2 related cerebral microangiopathies. *Cereb Circ Cogn Behav*. 2022;3:100140.
  12. Burgess R, Wang S, McTague A, Boysen KE, Yang X, Zeng Q, et al. The genetic landscape of epilepsy of infancy with migrating focal seizures. *Ann Neurol*. 2019;86:821–31.
  13. Oliver KL, Scheffer IE, Bennett MF, Grinton BE, Bahlo M, Berkovic SF. Genes4Epilepsy: An epilepsy gene resource. *Epilepsia*. 2023;64:1368–75.
  14. Howell KB, Eggers S, Dalziel K, Riseley J, Mandelstam S, Myers CT, et al. A population-based cost-effectiveness study of early genetic testing in severe epilepsies of infancy. *Epilepsia*. 2018;59:1177–87.
  15. Symonds JD, Zuberi SM, Stewart K, McLellan A, O'Regan M, MacLeod S, et al. Incidence and phenotypes of childhood-onset genetic epilepsies: a prospective population-based national cohort. *Brain*. 2019;142:2303–18.
  16. Wolff M, Johannesen KM, Hedrich UBS, Masnada S, Rubboli G, Gardella E, et al. Genetic and phenotypic heterogeneity suggest therapeutic implications in *SCN2A*-related disorders. *Brain*. 2017;140:1316–36.
  17. Symonds JD, Elliott KS, Shetty J, Armstrong M, Brunklaus A, Cutcutache I, et al. Early childhood epilepsies: epidemiology, classification, aetiology, and socio-economic determinants. *Brain*. 2021;144:2879–91.
  18. Donnan AM, Schneider AL, Russ-Hall S, Churilov L, Scheffer IE. Rates of status epilepticus and sudden unexplained death in epilepsy in people with genetic developmental and epileptic encephalopathies. *Neurology*. 2023;100:e1712–e1722.
  19. Vlaskamp DRM, Bassett AS, Sullivan JE, Robblee J, Sadleir LG, Scheffer IE, et al. Schizophrenia is a later-onset feature of *PCDH19* girls clustering epilepsy. *Epilepsia*. 2019;60:429–40.
  20. Catarino CB, Liu JY, Liagkouras I, Gibbons VS, Labrum RW, Ellis R, et al. Dravet syndrome as epileptic encephalopathy: evidence from long-term course and neuropathology. *Brain*. 2011;134:2982–3010.
  21. Berg AT, Kaat AJ, Gaebler-Spira D. Measuring the inch stones for progress: gross motor function in the developmental and epileptic encephalopathies. *Epilepsy Behav*. 2022;137:108953.
  22. Kerr WT, Kok N, Reddy AS, McFarlane KN, Stern JM, Pennell PB, et al. Demonstration of group-level and individual-level efficacy using time-to-event designs for clinical trials of antiseizure medications. *Neurology*. 2024;103:e209713.
  23. Defelippe VM, Brilstra E, Otte WM, Cross HJ, O'Callaghan F, De Giorgis V, et al. N-of-1 trials in epilepsy: a systematic review and lessons paving the way forward. *Epilepsia*. 2024;65:3119–37.
  24. Schulz A, Ajayi T, Specchio N, de Los Reyes E, Gissen P, Ballon D, et al. Study of intraventricular Cerliponase alfa for *CLN2* disease. *N Engl J Med*. 2018;378:1898–907.
  25. Defelippe VM, van Thiel GJM, Otte WM, Schutgens REG, Stunnenberg B, Cross HJ, et al. Toward responsible clinical n-of-1 strategies for rare diseases. *Drug Discov Today*. 2023;28:103688.
  26. Marson AG, Al-Kharusi AM, Alwaidh M, Appleton R, Baker GA, Chadwick DW, et al. The SANAD study of effectiveness of valproate, lamotrigine, or topiramate for generalised and unclassifiable epilepsy: an unblinded randomised controlled trial. *Lancet*. 2007;369:1016–26.
  27. Geoffrey AL, Pollack SF, Bruno PL, Thiele EA. Drug-drug interaction between clobazam and cannabidiol in children with refractory epilepsy. *Epilepsia*. 2015;56:1246–51.
  28. Knight EMP, Amin S, Bahi-Buisson N, Benke TA, Cross JH, Demarest ST, et al. Safety and efficacy of ganaxolone in patients with *CDKL5* deficiency disorder: results from the double-blind phase of a randomised, placebo-controlled, phase 3 trial. *Lancet Neurol*. 2022;21:417–27.
  29. Fisher RS, Cross JH, D'Souza C, French JA, Haut SR, Higurashi N, et al. Instruction manual for the ILAE 2017 operational classification of seizure types. *Epilepsia*. 2017;58:531–42.
  30. Akman CI, Montenegro MA, Jacob S, Eck K, Chiriboga C, Gilliam F. Seizure frequency in children with epilepsy: factors influencing accuracy and parental awareness. *Seizure*. 2009;18:524–9.
  31. O'Callaghan FJ, Edwards SW, Alber FD, Hancock E, Johnson AL, Kennedy CR, et al. Safety and effectiveness of hormonal treatment versus hormonal treatment with vigabatrin for infantile spasms (ICISS): a randomised, multicentre, open-label trial. *Lancet Neurol*. 2017;16:33–42.
  32. Nordli DR Jr. Usefulness of video-EEG monitoring. *Epilepsia*. 2006;47(Suppl 1):26–30.
  33. Biondi A, Zabler N, Kalousios S, Simblett S, Laiou P, Viana PF, et al. The value of self-reported variables in epilepsy monitoring and management. A systematic scoping review. *Seizure*. 2024;122:119–43.

34. Striano P, Auvin S, Collins A, Horvath R, Scheffer IE, Tzadok M, et al. A randomized, double-blind trial of triheptanoin for drug-resistant epilepsy in glucose transporter 1 deficiency syndrome. *Epilepsia*. 2022;63:1748–60.
35. Auvin S, Arzimanoglou A, Beller C, Floricel F, Daniels T, Bozorg A. Safety, tolerability, and efficacy of adjunctive lacosamide in pediatric patients with epilepsy syndromes associated with generalized seizures: phase 2, open-label exploratory trial. *Epilepsia*. 2023;64:2947–57.
36. Vivash L, Johns H, O'Brien TJ, Churilov L. The adaptation of the desirability of outcome ranking for interventional clinical trials in epilepsy: a novel consumer-led outcome measure. *Epilepsia Open*. 2023;8:1608–15.
37. Mitchell JW, Sossi F, Miller I, Jaber PB, das-Gupta Z, Fialho LS, et al. Development of an international standard set of outcomes

and measurement methods for routine practice for infants, children, and adolescents with epilepsy: the international consortium for health outcomes measurement consensus recommendations. *Epilepsia*. 2024;65:1938–61.

**How to cite this article:** Scheffer IE, French J, Valente KD, Auvin S, Cross JH, Specchio N. Operational definition of developmental and epileptic encephalopathies to underpin the design of therapeutic trials. *Epilepsia*. 2025;66:1014–1023. <https://doi.org/10.1111/epi.18265>