



Minerva Access is the Institutional Repository of The University of Melbourne

Author/s:

Kim, KW;Allen, DW;Briese, T;Couper, JJ;Barry, SC;Colman, PG;Cotterill, AM;Davis, EA;Giles, LC;Harrison, LC;Harris, M;Haynes, A;Horton, JL;Isaacs, SR;Jain, K;Lipkin, WI;Morahan, G;Morbey, C;Pang, ICN;Papenfuss, AT;Penno, MAS;Sinnott, RO;Soldatos, G;Thomson, RL;Vuillermin, PJ;Wentworth, JM;Wilkins, MR;Rawlinson, WD;Craig, ME

Title:

Distinct gut virome profile of pregnant women with type 1 diabetes in the ENDIA study

Date:

2019-02-01

Citation:

Kim, K. W., Allen, D. W., Briese, T., Couper, J. J., Barry, S. C., Colman, P. G., Cotterill, A. M., Davis, E. A., Giles, L. C., Harrison, L. C., Harris, M., Haynes, A., Horton, J. L., Isaacs, S. R., Jain, K., Lipkin, W. I., Morahan, G., Morbey, C., Pang, I. C. N., ... Craig, M. E. (2019). Distinct gut virome profile of pregnant women with type 1 diabetes in the ENDIA study. *Open Forum Infectious Diseases*, 6 (2), <https://doi.org/10.1093/ofid/ofz025>.

Persistent Link:

<https://hdl.handle.net/11343/250905>

License:

CC BY-NC-ND

# Distinct Gut Virome Profile of Pregnant Women With Type 1 Diabetes in the ENDIA Study

Ki Wook Kim,<sup>1,a</sup> Digby W. Allen,<sup>1,a</sup> Thomas Briese,<sup>2</sup> Jennifer J. Couper,<sup>3</sup> Simon C. Barry,<sup>3</sup> Peter G. Colman,<sup>4</sup> Andrew M. Cotterill,<sup>5</sup> Elizabeth A. Davis,<sup>6</sup> Lynne C. Giles,<sup>7</sup> Leonard C. Harrison,<sup>8</sup> Mark Harris,<sup>5</sup> Aveni Haynes,<sup>6</sup> Jessica L. Horton,<sup>1</sup> Sonia R. Isaacs,<sup>1</sup> Komal Jain,<sup>2</sup> Walter Ian Lipkin,<sup>2</sup> Grant Morahan,<sup>9</sup> Claire Morbey,<sup>10</sup> Ignatius C. N. Pang,<sup>11</sup> Anthony T. Papenfuss,<sup>8</sup> Megan A. S. Penno,<sup>3</sup> Richard O. Sinnott,<sup>12</sup> Georgia Soldatos,<sup>13</sup> Rebecca L. Thomson,<sup>3</sup> Peter J. Vuillermin,<sup>14</sup> John M. Wentworth,<sup>8</sup> Marc R. Wilkins,<sup>11</sup> William D. Rawlinson,<sup>15,b</sup> and Maria E. Craig<sup>1,16,b</sup>; on behalf of the ENDIA Study Group

<sup>1</sup>School of Women's and Children's Health, University of New South Wales, Sydney, Australia; <sup>2</sup>Center for Infection and Immunity, Mailman School of Public Health, Columbia University, New York; <sup>3</sup>Adelaide Medical School, Faculty of Health and Medical Sciences, University of Adelaide Robinson Research Institute, Australia; <sup>4</sup>Department of Diabetes and Endocrinology, The Royal Melbourne Hospital Victoria, Australia; <sup>5</sup>Children's Health Queensland Hospital and Health Service, Australia; <sup>6</sup>Telethon Kids Institute, The University of Western Australia, Perth; <sup>7</sup>School of Public Health, University of Adelaide, Australia; <sup>8</sup>The Walter and Eliza Hall Institute of Medical Research, Melbourne, Australia; <sup>9</sup>Centre for Diabetes Research, The Harry Perkins Institute for Medical Research, Perth, Australia; <sup>10</sup>Hunter Diabetes Centre, Newcastle, Australia; <sup>11</sup>School of Biotechnology and Biomolecular Science, University of New South Wales, Sydney, Australia; <sup>12</sup>Department of Computing and Information Systems, University of Melbourne, Australia; <sup>13</sup>Monash Centre for Health Research and Implementation, School of Public Health and Preventive Medicine, Monash University, Melbourne, Australia; <sup>14</sup>School of Medicine, Deakin University, Geelong, Australia; <sup>15</sup>Serology and Virology Division, SEALS Microbiology, Prince of Wales Hospital, Sydney, Australia; <sup>16</sup>Institute of Endocrinology and Diabetes, The Children's Hospital at Westmead, Sydney, Australia

**Background.** The importance of gut bacteria in human physiology, immune regulation, and disease pathogenesis is well established. In contrast, the composition and dynamics of the gut virome are largely unknown; particularly lacking are studies in pregnancy. We used comprehensive virome capture sequencing to characterize the gut virome of pregnant women with and without type 1 diabetes (T1D), longitudinally followed in the Environmental Determinants of Islet Autoimmunity study.

**Methods.** In total, 61 pregnant women (35 with T1D and 26 without) from Australia were examined. Nucleic acid was extracted from serial fecal specimens obtained at prenatal visits, and viral genomes were sequenced by virome capture enrichment. The frequency, richness, and abundance of viruses were compared between women with and without T1D.

**Results.** Two viruses were more prevalent in pregnant women with T1D: picobirnaviruses (odds ratio [OR], 4.2; 95% confidence interval [CI], 1.0–17.1;  $P = .046$ ) and tobamoviruses (OR, 3.2; 95% CI, 1.1–9.3;  $P = .037$ ). The abundance of 77 viruses significantly differed between the 2 maternal groups ( $\geq 2$ -fold difference;  $P < .02$ ), including 8 *Enterovirus B* types present at a higher abundance in women with T1D.

**Conclusions.** These findings provide novel insight into the composition of the gut virome during pregnancy and demonstrate a distinct profile of viruses in women with T1D.

**Keywords.** enterovirus; pregnancy; type 1 diabetes; virome capture sequencing.

Pregnancy is a complex immunological state in which the balance between an inimical alloimmune response and an environment of maternal tolerance may be perturbed by virus infections [1], potentially resulting in significant perinatal morbidity [2]. Helper T-lymphocyte (Th)-associated cytokines shift from Th1 towards Th2 to protect the fetus; however, this Th2 bias can diminish cell-mediated immunity and increase

vulnerability to intracellular infections, including viruses [3–5]. In pregnant women with type 1 diabetes (T1D), hyperglycemia may impede pathogen clearance, increasing the duration of gestational infections [6] and heightening the risk of adverse outcomes in the fetus, including subsequent development of T1D during childhood [7]. This is supported by our recent systematic review and meta-analysis of 2992 women and children, which demonstrated a significant association between maternal virus infection in pregnancy and T1D in offspring (odds ratio [OR], 2.2; 95% confidence interval [CI], 1.2–3.8;  $P = .008$ ) [8]. To date, no study has examined the gut virome during pregnancy and how it may be altered by T1D.

## METHODS

### Study Population and Sample Selection

The gut virome of 61 pregnant women (35 with T1D and 26 without) in the ENDIA (Environmental Determinants of Islet Autoimmunity) study (Australian New Zealand Clinical Trials Registry registration number ACTRN12613000794707) was

Received 12 December 2018; editorial decision 10 January 2019; accepted 15 January 2019.

<sup>a</sup>K. W. K. and D. W. A. are co-first authors.

<sup>b</sup>M. E. C. and W. D. R. are co-senior authors.

Presented in part: Immunology of Diabetes 2018 meeting, October 2018, London, UK.

Correspondence: M. E. Craig, MBBS, PhD, FRACP, MMed (ClinEpid), Institute of Endocrinology and Diabetes, The Children's Hospital at Westmead, Locked Bag 4001, Westmead, NSW 2145, Australia (m.craig@unsw.edu.au).

### Open Forum Infectious Diseases®

© The Author(s) 2019. Published by Oxford University Press on behalf of Infectious Diseases Society of America. This is an Open Access article distributed under the terms of the Creative Commons Attribution-NonCommercial-NoDerivs licence (<http://creativecommons.org/licenses/by-nc-nd/4.0/>), which permits non-commercial reproduction and distribution of the work, in any medium, provided the original work is not altered or transformed in any way, and that the work is properly cited. For commercial re-use, please contact journals.permissions@oup.com  
DOI: 10.1093/ofid/ofz025

examined (Supplementary Table 1). ENDIA is a prospective cohort study of children at risk of T1D (have  $\geq 1$  first-degree relative with T1D), followed longitudinally from pregnancy to 3 years of life [9]. Women recruited between 2012 and 2016 were included in this analysis. Overall, 59 pregnancies were singleton and 2 were twin pregnancies. Fecal samples were collected during the first ( $n = 18$ ), second ( $n = 47$ ), and/or third trimester of pregnancy ( $n = 59$ ), which were defined as gestational age of 1–14, 15–26, and 27–42 weeks, respectively. All samples were stored at  $-80^{\circ}\text{C}$  in aliquots before analysis. For every participant, all available samples were examined. In total, 49 of 61 women had samples for multiple timepoints and 12 of 61 had samples for all 3 trimesters.

The study was reviewed and approved (July 13, 2016) by the study's lead Human Research Ethics Committee at the Women's and Children's Health Network under the National Mutual Acceptance Scheme (HREC/16/WCHN/66) and at all participating study sites in Australia. All participants provided written informed consent and were free to withdraw from the study at any time. Families were excluded if the mother could not comprehend her participation in the study and therefore was unable to provide informed consent.

#### **Nucleic Acid Extraction**

Total nucleic acid (NA) was extracted using the MagMAX Total NA Isolation Kit (Thermo Fisher Scientific) on the semi-automated KingFisher FLEX Purification System (Thermo Fisher Scientific), following manufacturer's guidelines with minor modifications. Thirty percent (w/v) of fecal suspensions were prepared in  $1\times$  phosphate-buffered saline and centrifuged for 5 minutes. All spin steps were performed at  $13\,000\times g$  at room temperature. After centrifugation, 175  $\mu\text{L}$  supernatant was transferred to zirconium bead tubes containing 235  $\mu\text{L}$  Lysis/Binding Solution. Bead tubes were shaken at 2400 rpm on the Bioshake iQ (Quantifoil Instruments, Jena, Germany) for 15 minutes, then centrifuged 3 minutes. Into new tubes, 300  $\mu\text{L}$  lysate was transferred and further centrifuged for 6 minutes. Total NA was purified from 200  $\mu\text{L}$  lysate and stored at  $-80^{\circ}\text{C}$ .

#### **Sequence-Independent Amplification**

Total NA was subjected to complementary deoxyribonucleic acid (cDNA) synthesis and sequence-independent preamplification (SIP) using the Transplex Complete Whole Transcriptome Amplification Kit (WTA1; Sigma-Aldrich, St. Louis, MO), following a published protocol [10]. In brief, 3.5  $\mu\text{L}$  total NA was denatured at  $95^{\circ}\text{C}$  for 5 minutes instead of  $70^{\circ}\text{C}$  before cDNA synthesis to ensure amplification of both DNA and ribonucleic acid (RNA) molecules. Denatured NA was cooled to  $18^{\circ}\text{C}$ , and cDNA was synthesized using the following thermocycling conditions:  $18^{\circ}\text{C}$  10 minutes,  $25^{\circ}\text{C}$  10 minutes,  $37^{\circ}\text{C}$  30 minutes,  $42^{\circ}\text{C}$  10 minutes,  $70^{\circ}\text{C}$  20 minutes, and  $4^{\circ}\text{C}$  holding. The entire cDNA library was used as template for SIP using the following cycling

conditions repeated 22 times:  $94^{\circ}\text{C}$  30 seconds and  $70^{\circ}\text{C}$  5 minutes. After amplification, polymerase chain reaction (PCR) products were visualized on an agarose gel before purification using the ChargeSwitch-Pro PCR CleanUp Kit (Thermo Fisher Scientific).

#### **Virome Capture Sequencing**

One microgram of double-stranded DNA (dsDNA) was used for library synthesis using the KAPA Hyperplus kit (KAPA Biosystems, Wilmington, MA) with single-index adapters. In brief, dsDNA was enzymatically fragmented to an average of 200 base pairs. Fragments were purified using AmpureXP beads (Beckman Coulter, Brea, CA). Libraries were amplified for 6–9 cycles, quality checked on the LabChip GX Touch 24 Bioanalyzer (PerkinElmer, Waltham, MA), and quantified using the picogreen assay (Thermo Fisher Scientific) on the Victor X2 Fluorescent Microplate Reader (PerkinElmer). Completed libraries were pooled by equal mass for sequence capture. VirCapSeq-VERT was performed according to the Nimblegen SeqCap protocol (Roche, Basel, Switzerland) as described previously [11]. Postcapture libraries were purified and amplified before sequencing. To ensure sufficient depth of coverage (approximately 10 million unique sequence reads/sample), uniquely barcoded samples were pooled at a maximum of 20 libraries per pool (20-plex) and sequenced on a lane of HiSeq 4000 (Illumina, San Diego, CA).

#### **Genome Sequence Analysis**

Genome assembly, contig generation, and taxonomic classification of reads were performed as previously described [11]. Demultiplexed and quality-trimmed sequence reads were aligned against host reference databases from GenBank (National Center for Biotechnology Information) using the Bowtie2 mapping algorithm (version 2.1.0) [12] to remove the host background. Filtered reads were assembled de novo using either SOAPdenovo2 [13], MEGAHIT [14], or MIRA assemblers [15], then contigs and unique singletons were subjected to homology search at the nucleotide level using MegaBLAST. Sequences that exhibited poor or no homology at the nucleotide level were screened further by BLASTX against the viral GenBank protein database. Viral sequences detected from BLASTX analysis were subjected to another round of BLASTX homology search against the entire GenBank protein database to correct for biased E values and inaccurate taxonomic classifications. For reference-based alignments, to visualize depth and spread of coverage for individual viruses, both Integrated Genomics Viewer [16] and Geneious (version 9.0.5) [17] were used. After taxonomic classification, read counts were corrected to account for sample bleeding due to Illumina index cross-talk, where sequences with single index barcodes are erroneously sorted, resulting in approximately 0.1% of total reads being distributed to the incorrect sample Fastq file. Cutoffs were applied across each pool separately. For each virus, 0.1% of the highest read count in that pool was calculated and subtracted from the

number of reads of that virus in each sample. All resulting read counts below 1 were corrected to zero. This process minimized the risk of false-“positive” identification of viruses in samples. To evaluate virus positivity, a threshold of 100 viral reads matched by Basic Local Alignment Search Tool (BLAST) at the species level, randomly distributed over the target genome, was applied. This threshold was selected for its proximity to the typical limit of detection of targeted quantitative PCR (~100 viral copies/mL), determined based on previous VirCapSeq-VERT experiments using whole blood [11] and feces (unpublished data).

### Statistical Analysis

The STROBE reporting guidelines for observational cohort studies were followed [18]. Continuous demographic variables are reported as a mean  $\pm$  standard deviation (SD) for parametric data and median (interquartile range) for skewed data, and categorical data as number (%). Participant characteristics, including demographic variables, lifestyle factors, and comorbidities, are reported according to T1D status and were compared using independent *t* tests and Fisher’s Exact tests for continuous and categorical data, respectively. The socioeconomic index for areas (index for relative socioeconomic disadvantage) percentile for the postal area in which each patient resided was used as an indicator of socioeconomic status (SES) [19]. High SES was defined as >75th percentile [20]. Virus positivity was determined by a positivity threshold of 100 viral reads matched by BLAST at the species level.

The differential abundance of viruses between mothers with and without T1D was examined using the edgeR package (version 3.14.0) [21] in R (version 3.3.0). A matrix of read counts, corrected for index cross-talk, was generated encompassing all samples and detected viruses. Each matrix entry had a count of 1 added to avoid issues with division by or log function of zero [22] before conversion to counts per million. Data were normalized using the Relative Log Expression method with respect to library size [23]. Two methods, common and tag-wise [24], were used to estimate the biological coefficient of variation. Samples were divided into case and control groups, and the “exact” test was used to perform hypothesis testing [25]. *P* values were adjusted to control false-discovery rates with the Benjamini-Hochberg multiple testing correction procedure [26]. Viruses with an adjusted *P* < .05 were identified as displaying statistically significant differential abundance between case and control groups. Heatmaps were created to visualize the data using iheatmapr package in R [27].

The richness of vertebrate-infecting viruses in feces was estimated using EstimateS software (version 9.1.0) [28]. Estimates used to calculate richness at the genus level and sample-based rarefaction curves were computed using prepublished analytical formulas [29]. In total, 100 randomizations (runs) were completed, extrapolating by a factor of 1.0 with estimates (knots) at every sample. Estimates of vertebrate-infecting virus richness in cases were compared with those of controls using a

non-parametric test, assuming the estimates in cases and controls are statistically independent of each other. Rarefaction curves were plotted in Microsoft Excel, version 15.3 (Redmond, WA).

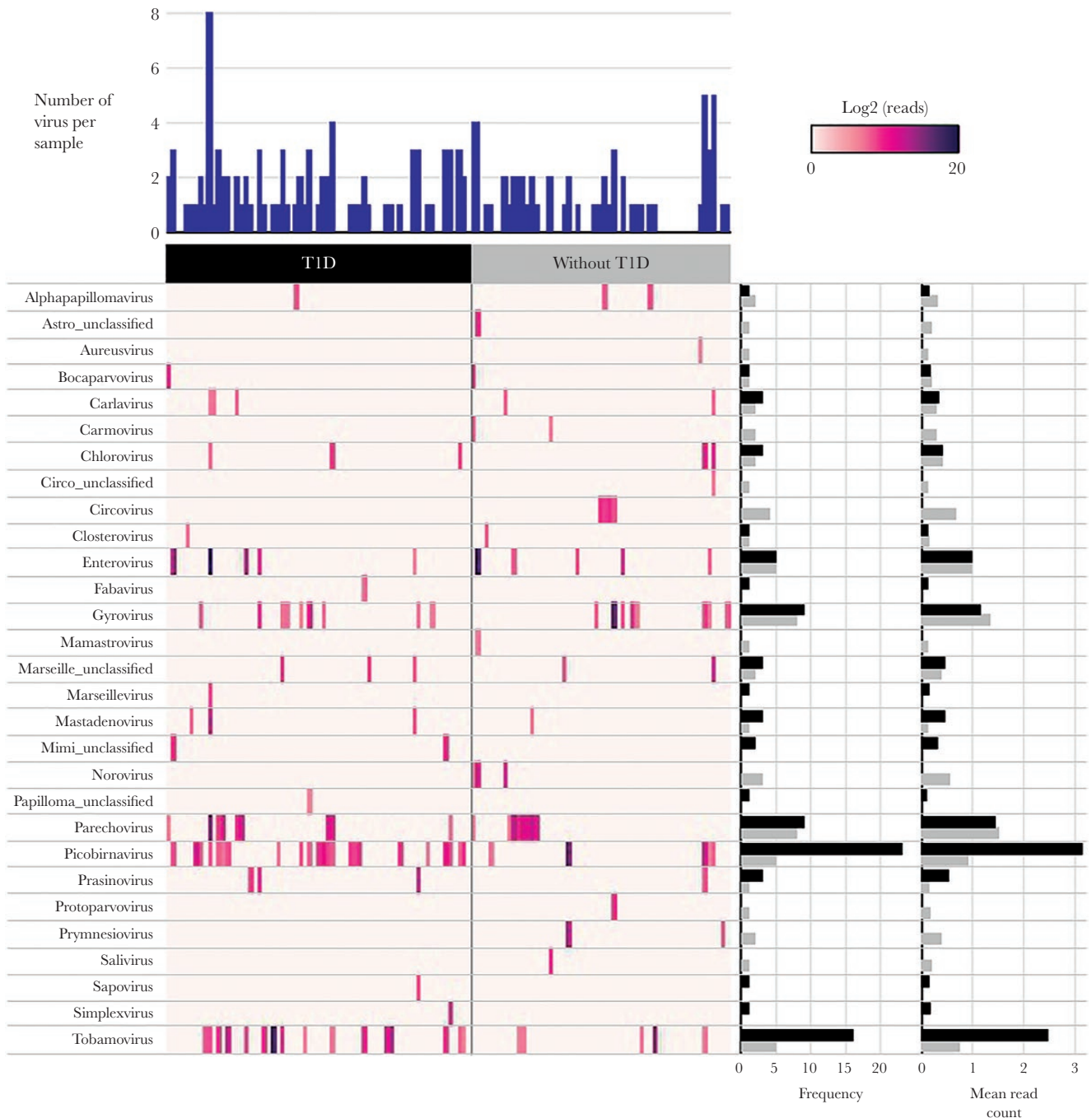
The association between maternal T1D and positivity for each virus detected in mothers during pregnancy was examined using generalized estimating equation (GEE) models. The GEE method for the binary outcome of virus positivity at the genus level (logit link function) was applied to account for the correlation among longitudinal observations of the same participant. In the GEE model, virus infection at the genus level was the independent variable and the major dependent variable was maternal T1D. Other explanatory variables examined were maternal age at conception, parity, pet ownership, SES, maternal body mass index (BMI), education, maternal smoking, and age at sample in the model.

Univariate and multivariable analyses were undertaken on both study groups. These covariates and factors in the GEE model were selected from a larger set of potential covariates by forwards and backwards regression. An individual model was used for each genus of virus, with independent variables that exhibited association with the outcome variable being included in multivariable analysis. The GEE models were compared using the quasi-likelihood under independence model criterion, and the lowest scoring and most parsimonious models are reported. An exchange correlation structure was used, and the results were expressed as OR determined by the regression coefficient  $\exp\beta$ , with 95% CIs. Frequency of virus positivity limited multivariable analysis to the 5 most frequent genera of virus detected in both study groups. Statistical analyses were performed using IBM SPSS Statistics, version 24.0 (Chicago, IL). Statistical significance was defined as *P*  $\leq$  .05.

## RESULTS

The pregnancy gut virome of women with and without T1D was characterized using VirCapSeq-VERT on 124 fecal specimens collected from 61 mothers (*n* = 35 with T1D, *n* = 26 without T1D) in the ENDIA study (Supplementary Table 1). The mean ( $\pm$ SD) age of mothers at conception was 32  $\pm$  4 years and BMI was 27  $\pm$  6 kg/m<sup>2</sup>. Compared to women without T1D, women with T1D gave birth at a significantly younger age, after a shorter gestational length, and had fewer children (Supplementary Table 1).

High-throughput sequencing generated ~2 billion raw reads, which reduced to 1.6 billion reads after filtration of host and primer sequences. This equated to 12.7  $\pm$  4.2 million filtered reads per sample. In total, 29 genera of eukaryotic viruses were detected, and 63% of samples (78 of 124) tested positive for at least 1 virus (Figure 1). Members of the *Picobirnavirus*, *Parechovirus*, and *Enterovirus* (EV) genera were among the most frequent vertebrate-infecting viruses sequenced. Although nonvertebrate-infecting viruses were excluded from

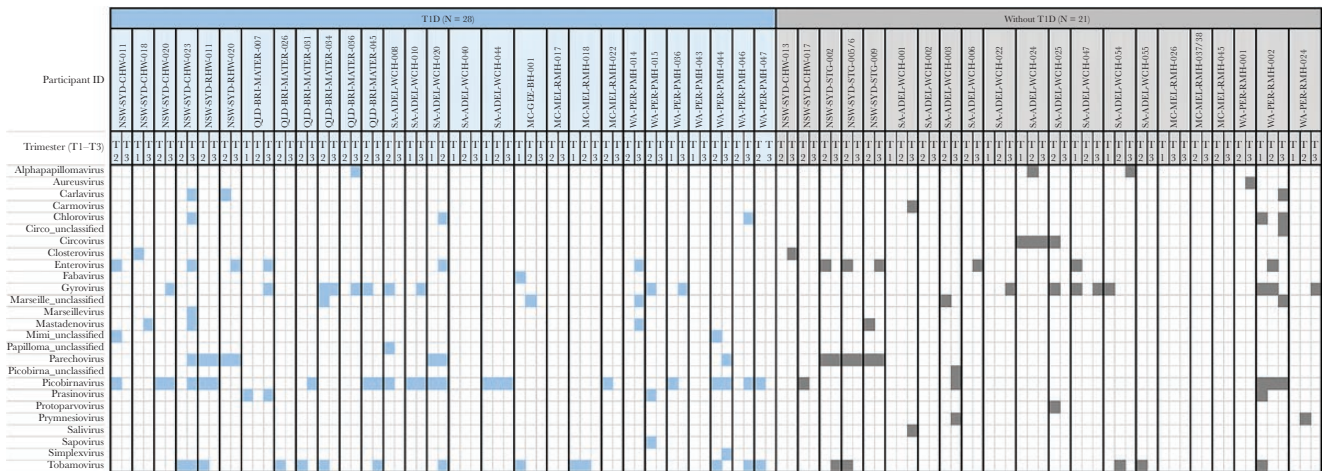


**Figure 1.** Viruses detected using VirCapSeq-VERT. Heatmap of viral reads ( $\log_2$  scale) sequenced in 124 fecal samples collected from 35 women with type 1 diabetes (T1D) ( $n = 69$  samples) and 26 without ( $n = 55$  samples) during pregnancy. Only viruses with  $\geq 100$  reads matched by Basic Local Alignment Search Tool (BLAST) at the species level were included and represented at the genus level. Number of viruses detected per specimen, frequency of each virus within the case or control group, and the mean log read counts are summarized by bar charts.

VirCapSeq-VERT enrichment, tobamoviruses were frequently detected, suggesting that plant viruses are highly abundant in the gut during pregnancy and prevalent in human feces [30]. Although not reaching statistical significance, there was a trend to higher virus positivity in mothers with T1D versus without (64% vs 50%;  $P = .14$ ). Rarefaction analysis revealed no difference in the richness of vertebrate-infecting viruses between

women with and without T1D (Supplementary Figure 1), suggesting that all participants were exposed to a comparable community of viruses, independent of their T1D status.

Examination of longitudinal samples from 49 of 61 participants ( $n = 28$  with T1D,  $n = 21$  without T1D) identified alphapapillomaviruses, circoviruses, parechoviruses, and picobirnaviruses in multiple trimesters of pregnancy within individuals (Figure



**Figure 2.** Longitudinal changes in the gut virome during pregnancy. Presence-absence heatmap of viruses detected over multiple trimesters of pregnancy (T1, T2, and T3) in women with type 1 diabetes (n = 28 individuals) and without (n = 21 individuals).

2). This may indicate persistent or recurring infection by closely related strains. There was no difference in the proportion of virus-positive samples across the 3 trimesters ( $P = .95$ ). Chicken anaemia virus, genus *Gyrovirus*, and plant virus, pepper mild mottle virus, genus *Tobamovirus* were also detected across multiple trimesters, but these most likely originated from dietary intake [30]. Two viruses were more prevalent in women with T1D: picobirnaviruses (33% vs 9%; OR = 4.2; 95% CI, 1.0–17.1;  $P = .046$ ) and tobamoviruses (22% vs 9%; OR = 3.2; 95% CI, 1.1–9.3;  $P = .037$ ). In multivariable GEE models, the higher odds of having picobirnaviruses and tobamoviruses in women with T1D remained significant after adjustment for maternal age. In addition, there was a trend towards higher rates of gyroviruses, chloroviruses, and carlaviruses in women with T1D, but differences did not reach statistical significance. The frequency of EV did not differ between the 2 maternal groups; however, significant differences in EV types were observed. Coxsackievirus A2 (CVA2), CVB4, CVB5, Rhinovirus B, and ECHOviruses were detected exclusively in women with T1D, whereas CVA6, CVA10, CVA14, and EV71 were present only in mothers without T1D (Supplementary Table 2).

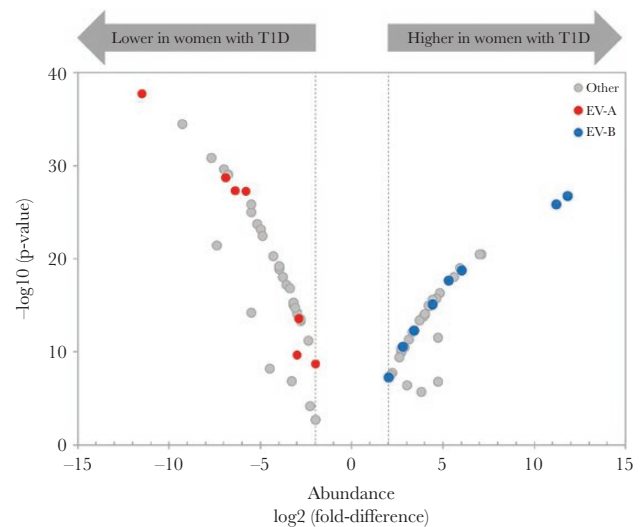
Differential abundance analysis identified 77 virus types with  $\geq 2$ -fold significant difference ( $P < .02$ ) between pregnant women with T1D versus those without, with a false discovery rate  $< 5\%$  (Figure 3 and Supplementary Data). Among the top 15 differentially abundant viruses were 3 EV-B types (CVB4, CVB3, and ECHOvirus E18), all present at higher abundance in women with T1D (Table 1). In contrast, 4 EV-A types (CVA10, CVA16, CVA5, and CVA14) were more abundant during pregnancy in women without T1D.

## DISCUSSION

We demonstrated that eukaryotic viruses are prevalent in the gut of women during pregnancy, and that women with T1D

are more likely to harbor picobirnaviruses and tobamoviruses compared with women without T1D. Furthermore, we found significant differences in viral abundance between women with and without T1D, including 8 EV B types that were all present at a higher abundance in women with T1D. These results demonstrate a distinct profile of viruses in women with T1D in pregnancy.

The pathogenicity of picobirnaviruses in humans remains to be definitively established. A weak association with gastroenteritis in animals has been found, whereas in humans they are only considered as possible opportunistic pathogens [31].



**Figure 3.** Viruses differentially abundant between the gut of women with and without type 1 diabetes during pregnancy. Volcano plot of viruses with  $\geq 2$ -fold difference (marked by vertical dotted lines) in abundance between pregnant women with and without type 1 diabetes. Only differences with false discovery rate below 5% ( $P < .05$ ) as determined by edgeR are represented. Species A (EV-A) and B enteroviruses (EV-B) are marked in red and blue, respectively. All other viruses represented in gray.

**Table 1. Top 15 Differentially Abundant Species of Viruses between the Gut of Pregnant Women With Type 1 Diabetes Versus Without**

| Virus                                      | LogFD | PValue   | FDR      | Rank (Magnitude of FD) |
|--|-------|----------|----------|------------------------|
| <b>Higher in Women with T1D</b>            |       |          |          |                        |
| Human coxsackievirus B4                    | 11.8  | 1.70E-27 | 1.50E-26 | 1                      |
| Human coxsackievirus B3                    | 11.2  | 1.40E-26 | 1.10E-25 | 3                      |
| <i>Bathycoccus</i> sp RCC1105 virus BpV2   | 7.1   | 2.90E-21 | 1.50E-20 | 7                      |
| Human adenovirus A                         | 7     | 3.20E-21 | 1.60E-20 | 8                      |
| ECHOvirus E18                              | 6     | 1.60E-19 | 5.90E-19 | 15                     |
| <b>Lower in Women With T1D</b>             |       |          |          |                        |
| Coxsackievirus A10                         | -11.5 | 1.70E-38 | 1.80E-36 | 2                      |
| Brandmavirus UC1                           | -9.3  | 2.90E-35 | 1.50E-33 | 4                      |
| <i>Phaeocystis globosa</i> virus           | -7.7  | 1.30E-31 | 3.50E-30 | 5                      |
| Porcine picobirnavirus                     | -7.4  | 3.40E-22 | 1.90E-21 | 6                      |
| Tomato mosaic virus                        | -7    | 2.30E-30 | 4.80E-29 | 9                      |
| <i>Ostreococcus lucimarinus</i> virus OIV4 | -6.9  | 1.70E-29 | 2.20E-28 | 10                     |
| Coxsackievirus A16                         | -6.9  | 1.70E-29 | 2.20E-28 | 11                     |
| <i>Paramecium bursaria</i> Chlorella virus | -6.8  | 7.70E-30 | 1.40E-28 | 12                     |
| Coxsackievirus A5                          | -6.4  | 4.30E-28 | 4.80E-27 | 13                     |
| Coxsackievirus A14                         | -6.4  | 4.60E-28 | 4.80E-27 | 14                     |

Abbreviations: FD, fold difference; FDR, false discovery rate; T1D, type 1 diabetes.

Most recently, picobirnaviruses were detected at high levels in patients with human immunodeficiency virus [32] and graft-versus-host disease [33], leading to the proposal that they may serve as a biomarker of immunosuppression. Thus, it is plausible that a higher prevalence of picobirnaviruses in women with T1D could be reflective of impaired antiviral defence. Tobamoviruses are not known to be pathogenic to humans and are commonly thought to be introduced to the gut through diet [30, 34]. Therefore, their higher prevalence in women with T1D during pregnancy may reflect differences in diet or consumption of contaminated drinking water [35]. Alternatively, there may be other factors involved such as gut permeability and intestinal inflammation, which are both increased in individuals with T1D [36] and may prevent effective clearance of dietary viruses. Our frequent detection of tobamoviruses in feces is consistent with other virome studies, including a recent study of 5 mother-infant pairs [30, 37].

The predominance of EV-B types found in pregnant women with T1D is consistent with higher rates of EV-B observed in individuals with T1D versus healthy controls [38–40]. Furthermore, the greater abundance of CVB4 in women with T1D complements the body of molecular and epidemiological evidence implicating CVB4 in T1D pathogenesis [39, 41–44]. In contrast, EV-A types were more prevalent and present at a higher abundance in pregnant women without T1D (Figure 3). This contrasts results obtained from children in the Finnish Diabetes Prediction and Prevention (DIPP) study that found a higher rate of EV-A infections in cases who developed T1D compared with matched controls, during a time window more than 12 months before the first detection of islet autoantibody [45]. The result also contrasts our own findings in the Australian Viruses In the Genetically at Risk (VIGR) study [46], where we

also found a predominance of EV-A viruses in feces of children before or at the time of the first islet autoantibody detection when compared with matched controls (Kim et al [47]).

A recent study examining the intestinal virome changes that precede the development of autoimmunity in T1D-susceptible children detected circoviruses at a greater abundance and prevalence in controls, suggesting that infection with this virus may offer protection from the development of T1D [48]. Consistent with this hypothesis, circoviruses were exclusively detected in women without T1D in our investigation (Figure 1). However, our sample size was too small to detect a statistically significant difference in frequency, and the case participants examined in our study were all women who had a long-standing T1D.

We examined potential confounding factors, in addition to T1D, that may influence the risk of virus infection during pregnancy. In univariate analysis, younger maternal age was associated with picobirnaviruses, older maternal age and no tertiary education was associated with EVs, and low SES was associated with gyroviruses. In multivariable GEE models, all of the aforementioned relationships remained significant except between maternal age and picobirnaviruses. Glycemic control may also influence susceptibility to infection; however, the majority of women with T1D in our study achieved glycemic targets for pregnancy.

To the best of our knowledge, this is the first study to examine the longitudinal gut virome across all 3 trimesters of pregnancy, providing novel baseline data for future gut virome investigations. Another major strength of this study is the application of virome capture sequencing [11, 49], which is the most sensitive and comprehensive sequence-based virome characterization tool currently available for vertebrate-infecting viruses. This method specifically targets all known viruses capable of infecting humans

and other vertebrates, significantly reducing sequences produced from host and bacterial background, allowing up to a 10 000-fold increase in the number of viral reads recovered compared with conventional virome sequencing methods. Furthermore, our method enabled the examination of both RNA and DNA viruses simultaneously [11]. Despite these strengths, the interpretation of our virome data is limited by the fact that sequencing cannot differentiate between the presence of viral genomes in the gut versus actively replicating viruses. In addition, the absence of a nonpregnant control group precluded the analysis of the effect of pregnancy on virus infection in this study.

Given the results of our recent systematic review and meta-analysis of 2992 women and children that demonstrated a significant association between maternal virus infection in pregnancy and T1D in the offspring [8], future studies could be aimed at examining the impact of maternal virus infections on the development of islet autoimmunity and T1D in the offspring. For this purpose, the offspring of women examined in this study are being followed longitudinal for these 2 outcomes as part of the ENDIA study, a prospective cohort study following at risk children. The characterization of the gut virome in these mother-infant pairs will allow identification of potential vertical transmission of viruses (currently underway). The impact of diet on the gut virome will also be examined. The virome of other potential sources of vertical transmission should also be investigated such as the oral, skin, breastmilk, and the vaginal virome, which has been recently shown to be of clinical importance for its potential contribution to preterm birth [50].

## CONCLUSIONS

In conclusion, our findings provide novel insight into the diversity and dynamics of the gut virome during pregnancy and identify T1D and maternal age as key factors influencing virus infection in pregnancy. We show a novel potential association between T1D and picobirnaviruses and demonstrate a distinct profile of viruses during pregnancy in women with T1D, providing novel targets for prevention studies.

## Supplementary Data

Supplementary materials are available at *Open Forum Infectious Diseases* online. Consisting of data provided by the authors to benefit the reader, the posted materials are not copyedited and are the sole responsibility of the authors, so questions or comments should be addressed to the corresponding author.

## Acknowledgments

We thank Nishit P. Bhuvu (Columbia University, NY) for performing the virome capture hybridization and submitting samples for sequencing; Cheng Guo (Columbia University, NY) for assisting in the processing of metagenomic data and generation of Basic Local Alignment Search Tool (BLAST) result summaries.

**Financial support.** This work was funded by the National Health and Medical Research Council (NHMRC) Practitioner fellowships (APP1045777 [to M. E. C.] and APP1044694 [to W. D. R.]), Juvenile Diabetes Research Foundation Australia (JDRF)/NHMRC Centre of Research Excellence for

the Protection of Pancreatic Beta Cells (APP1078106), and the National Institutes of Health (Center for Research in Diagnostics and Discovery) (U19 AI109761 [to T. B. and W. I. L.]). The ENDIA Study is supported by JDRF Australia, the recipient of the Australian Research Council Special Research Initiative in Type 1 Juvenile Diabetes, The Leona M. and Harry B. Helmsley Charitable Trust, JDRF International, and the NHMRC.

**Potential conflicts of interest.** All authors: No reported conflicts of interest. All authors have submitted the ICMJE Form for Disclosure of Potential Conflicts of Interest.

## References

- Guleria I, Sayegh MH. Maternal acceptance of the fetus: true human tolerance. *J Immunol* **2007**; 178:3345–51.
- Racicot K, Kwon JY, Aldo P, et al. Understanding the complexity of the immune system during pregnancy. *Am J Reprod Immunol* **2014**; 72:107–16.
- Jamieson DJ, Theiler RN, Rasmussen SA. Emerging infections and pregnancy. *Emerg Infect Dis* **2006**; 12:1638–43.
- Sykes L, MacIntyre DA, Yap XJ, et al. The Th1:th2 dichotomy of pregnancy and preterm labour. *Mediators Inflamm* **2012**; 2012:967629.
- Scott GM, Chow SS, Craig ME, et al. Cytomegalovirus infection during pregnancy with maternofetal transmission induces a proinflammatory cytokine bias in placenta and amniotic fluid. *J Infect Dis* **2012**; 205:1305–10.
- Lin SF, Kuo CF, Chiou MJ, Chang SH. Maternal and fetal outcomes of pregnant women with type 1 diabetes, a national population study. *Oncotarget* **2017**; 8:80679–87.
- Shapenfield E, Jamieson DJ, Kourtis AP. Pregnancy and susceptibility to infectious diseases. *Infect Dis Obstet Gynecol* **2013**; 2013:752852.
- Allen DW, Kim KW, Rawlinson WD, Craig ME. Maternal virus infections in pregnancy and type 1 diabetes in their offspring: systematic review and meta-analysis of observational studies. *Rev Med Virol* **2018**; 28:e1974.
- Penno MA, Couper JJ, Craig ME, et al. Environmental determinants of islet autoimmunity (ENDIA): a pregnancy to early life cohort study in children at-risk of type 1 diabetes. *BMC Pediatr* **2013**; 13:124.
- Conceição-Neto N, Zeller M, Lefrère H, et al. Modular approach to customise sample preparation procedures for viral metagenomics: a reproducible protocol for virome analysis. *Sci Rep* **2015**; 5:16532.
- Briese T, Kapoor A, Mishra N, et al. Virome capture sequencing enables sensitive viral diagnosis and comprehensive virome analysis. *MBio* **2015**; 6:e01491–15.
- Langmead B, Salzberg SL. Fast gapped-read alignment with Bowtie 2. *Nat Methods* **2012**; 9:357–9.
- Luo R, Liu B, Xie Y, et al. SOAPdenovo2: an empirically improved memory-efficient short-read de novo assembler. *Gigascience* **2012**; 1:18.
- Li D, Liu CM, Luo R, et al. MEGAHIT: an ultra-fast single-node solution for large and complex metagenomics assembly via succinct de Bruijn graph. *Bioinformatics* **2015**; 31:1674–6.
- Mundry M, Bornberg-Bauer E, Sammeth M, Feulner PG. Evaluating characteristics of de novo assembly software on 454 transcriptome data: a simulation approach. *PLoS One* **2012**; 7:e31410.
- Robinson JT, Thorvaldsdóttir H, Winckler W, et al. Integrative genomics viewer. *Nat Biotechnol* **2011**; 29:24–6.
- Kearse M, Moir R, Wilson A, et al. Geneious Basic: an integrated and extendable desktop software platform for the organization and analysis of sequence data. *Bioinformatics* **2012**; 28:1647–9.
- von Elm E, Altman DG, Egger M, et al. The Strengthening the Reporting of Observational Studies in Epidemiology (STROBE) Statement: guidelines for reporting observational studies. *Int J Surg* **2014**; 12:1495–9.
- Pink B. Socio-Economic Indexes for Areas (SEIFA) - Technical Paper. In: Australian Bureau of Statistics, ed. Canberra: Commonwealth of Australia; **2011**.
- Department of Education and Training. Low socio-economic status (SES) - postcode measure. Available at: [http://heimshelp.education.gov.au/sites/heimshelp/resources/glossary/pages/glossaryterm?title=Low-socio-economic-status-\(SES\)-postcode-measure](http://heimshelp.education.gov.au/sites/heimshelp/resources/glossary/pages/glossaryterm?title=Low-socio-economic-status-(SES)-postcode-measure). Accessed 1 December 2017.
- Robinson MD, McCarthy DJ, Smyth GK. edgeR: a Bioconductor package for differential expression analysis of digital gene expression data. *Bioinformatics* **2010**; 26:139–40.
- McMurdie PJ, Holmes S. Waste not, want not: why rarefying microbiome data is inadmissible. *PLoS Comput Biol* **2014**; 10:e1003531.
- Anders S, Huber W. Differential expression analysis for sequence count data. *Genome Biol* **2010**; 11:R106.
- Robinson MD, Smyth GK. Moderated statistical tests for assessing differences in tag abundance. *Bioinformatics* **2007**; 23:2881–7.
- Robinson MD, Smyth GK. Small-sample estimation of negative binomial dispersion, with applications to SAGE data. *Biostatistics* **2008**; 9:321–32.

26. Benjamini Y, Hochberg Y. Controlling the false discovery rate: a practical and powerful approach to multiple testing. *J Royal Stat Soc* **1995**; 57:289–300.
27. Schep AN, Kummerfeld SK. iheatmapr: interactive complex heatmaps in R. *J Open Source Softw* **2017**; 2, 359. doi:10.21105/joss.00359.
28. Colwell RK, Elsensohn JE. EstimateS turns 20: statistical estimation of species richness and shared species from samples, with non-parametric extrapolation. *Ecography* **2014**; 37:609–13. doi:10.1111/ecog.00814.
29. Colwell RK, Chao A, Gotelli NJ, et al. Models and estimators linking individual-based and sample-based rarefaction, extrapolation and comparison of assemblages. *J Plant Ecol* **2012**; 5:3–21.
30. Zhang T, Breitbart M, Lee WH, et al. RNA viral community in human feces: prevalence of plant pathogenic viruses. *PLoS Biol* **2006**; 4:e3.
31. Smits SL, van Leeuwen M, Schapendonk CM, et al. Picobirnaviruses in the human respiratory tract. *Emerg Infect Dis* **2012**; 18:1539–40.
32. Giordano MO, Martinez LC, Rinaldi D, et al. Diarrhea and enteric emerging viruses in HIV-infected patients. *AIDS Res Hum Retroviruses* **1999**; 15:1427–32.
33. Legoff J, Resche-Rigon M, Bouquet J, et al. The eukaryotic gut virome in hematopoietic stem cell transplantation: new clues in enteric graft-versus-host disease. *Nat Med* **2017**; 23:1080–5.
34. Phan TG, Li L, O’Ryan MG, et al. A third gyrovirus species in human faeces. *J Gen Virol* **2012**; 93:1356–61.
35. Haramoto E, Kitajima M, Kishida N, et al. Occurrence of pepper mild mottle virus in drinking water sources in Japan. *Appl Environ Microbiol* **2013**; 79:7413–8.
36. Vaarala O, Atkinson MA, Neu J. The “perfect storm” for type 1 diabetes: the complex interplay between intestinal microbiota, gut permeability, and mucosal immunity. *Diabetes* **2008**; 57:2555–62.
37. Asnicar F, Manara S, Zolfo M, et al. Studying vertical microbiome transmission from mothers to infants by strain-level metagenomic profiling. *mSystems* **2017**; 2:e00164–16. doi:10.1128/mSystems.00164-16.
38. Laitinen OH, Honkanen H, Pakkanen O, et al. Coxsackievirus B1 is associated with induction of  $\beta$ -cell autoimmunity that portends type 1 diabetes. *Diabetes* **2014**; 63:446–55.
39. Yin H, Berg AK, Tuvemo T, Frisk G. Enterovirus RNA is found in peripheral blood mononuclear cells in a majority of type 1 diabetic children at onset. *Diabetes* **2002**; 51:1964–71.
40. Oikarinen S, Tauriainen S, Hober D, et al. Virus antibody survey in different European populations indicates risk association between coxsackievirus B1 and type 1 diabetes. *Diabetes* **2014**; 63:655–62.
41. Schulte BM, Bakkers J, Lanke KH, et al. Detection of enterovirus RNA in peripheral blood mononuclear cells of type 1 diabetic patients beyond the stage of acute infection. *Viral Immunol* **2010**; 23:99–104.
42. Coleman TJ, Gamble DR, Taylor KW. Diabetes in mice after Coxsackie B 4 virus infection. *Br Med J* **1973**; 3:25–7.
43. Adams SF. The seasonal variation in the onset of acute diabetes: the age and sex factors in 1000 diabetic patients. *Arch Intern Med* **1926**; 37:861–4.
44. Dotta F, Censini S, van Halteren AG, et al. Coxsackie B4 virus infection of beta cells and natural killer cell insulinitis in recent-onset type 1 diabetic patients. *Proc Natl Acad Sci U S A* **2007**; 104:5115–20.
45. Honkanen H, Oikarinen S, Nurminen N, et al. Detection of enteroviruses in stools precedes islet autoimmunity by several months: possible evidence for slowly operating mechanisms in virus-induced autoimmunity. *Diabetologia* **2017**:1–8.
46. Yeung WC, Al-Shabeeb A, Pang CN, et al. Children with islet autoimmunity and enterovirus infection demonstrate a distinct cytokine profile. *Diabetes* **2012**; 61:1500–8.
47. Kim KW, Horton JL, Pang IC, et al. Higher abundance of enterovirus A species in the gut of children with islet autoimmunity. *Sci Rep* **2019**. doi:10.1038/s41598-018-38368-8
48. Zhao G, Vatanen T, Droit L, et al. Intestinal virome changes precede autoimmunity in type I diabetes-susceptible children. *Proc Natl Acad Sci U S A* **2017**; 114:E6166–75.
49. Wylie TN, Wylie KM, Herter BN, Storch GA. Enhanced virome sequencing using targeted sequence capture. *Genome Res* **2015**; 25:1910–20.
50. Wylie KM, Wylie TN, Cahill AG, et al. The vaginal eukaryotic DNA virome and preterm birth. *Am J Obstet Gynecol* **2018**; 219:189.e1–189.e12.