



Minerva Access is the Institutional Repository of The University of Melbourne

Author/s:

Ross, AM;Kelly, CM;Jorm, AF

Title:

Correction to: Re-development of mental health first aid guidelines for non-suicidal self-injury: a Delphi study (BMC Psychiatry, (2014), 14, 1, (236), 10.1186/s12888-014-0236-5)

Date:

2021-12-01

Citation:

Ross, A. M., Kelly, C. M. & Jorm, A. F. (2021). Correction to: Re-development of mental health first aid guidelines for non-suicidal self-injury: a Delphi study (BMC Psychiatry, (2014), 14, 1, (236), 10.1186/s12888-014-0236-5). BMC Psychiatry, 21 (1), <https://doi.org/10.1186/s12888-021-03402-z>.

Persistent Link:

<https://hdl.handle.net/11343/296400>

License:

[CC BY](#)

CORRECTION

Open Access



Correction to: Re-development of mental health first aid guidelines for non-suicidal self-injury: a Delphi study

Anna M. Ross¹, Claire M. Kelly^{2,3} and Anthony F. Jorm^{1*}

Correction to: BMC Psychiatry 14:236:2014
Doi: [10.1186/s12888-014-0236-5](https://doi.org/10.1186/s12888-014-0236-5)

Following the publication of the original article [1], the authors identified discrepancies between Fig. 1 and Additional file 1.

The original article [1] has been corrected.

Supplementary Information

The online version contains supplementary material available at <https://doi.org/10.1186/s12888-021-03402-z>.

Additional file 1. Items endorsed into and rejected from the guidelines, and the corresponding round consensus was reached.

Author details

¹Melbourne School of Population and Global Health, The University of Melbourne, Level 4, 207 Bouverie St, Parkville, Victoria 3010, Australia. ²Mental Health First Aid Australia, Level 6, 369 Royal Parade, Parkville, Victoria 3052, Australia. ³School of Psychology, Deakin University, Burwood, Victoria 3125, Australia.

Published online: 18 November 2021

Reference

1. Ross AM, et al. Re-development of mental health first aid guidelines for non-suicidal self-injury: a Delphi study. *BMC Psychiatry*. 2014;14:236. <https://doi.org/10.1186/s12888-014-0236-5>.

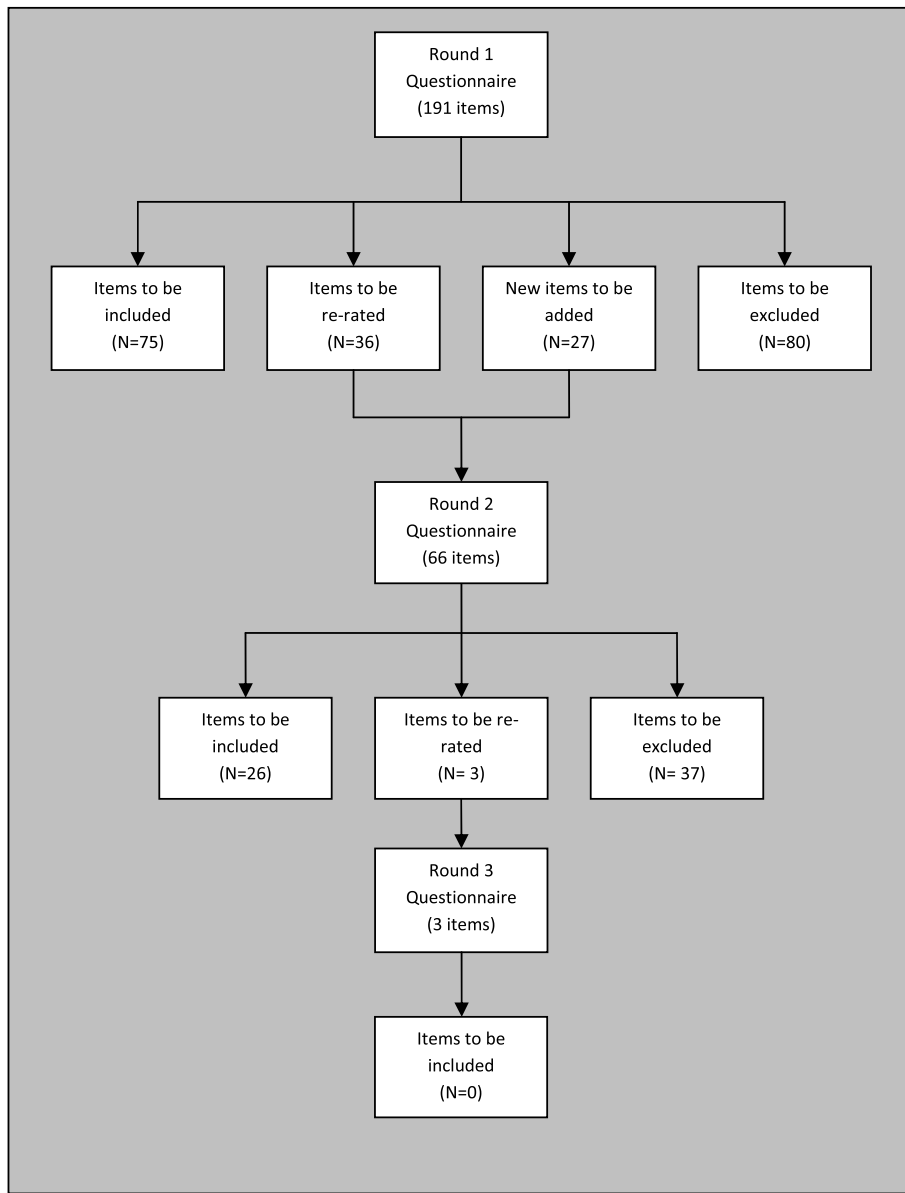
The original article can be found online at <https://doi.org/10.1186/s12888-014-0236-5>.

* Correspondence: ajorm@unimelb.edu.au

¹Melbourne School of Population and Global Health, The University of Melbourne, Level 4, 207 Bouverie St, Parkville, Victoria 3010, Australia
Full list of author information is available at the end of the article



© The Author(s). 2021 **Open Access** This article is licensed under a Creative Commons Attribution 4.0 International License, which permits use, sharing, adaptation, distribution and reproduction in any medium or format, as long as you give appropriate credit to the original author(s) and the source, provide a link to the Creative Commons licence, and indicate if changes were made. The images or other third party material in this article are included in the article's Creative Commons licence, unless indicated otherwise in a credit line to the material. If material is not included in the article's Creative Commons licence and your intended use is not permitted by statutory regulation or exceeds the permitted use, you will need to obtain permission directly from the copyright holder. To view a copy of this licence, visit <http://creativecommons.org/licenses/by/4.0/>. The Creative Commons Public Domain Dedication waiver (<http://creativecommons.org/publicdomain/zero/1.0/>) applies to the data made available in this article, unless otherwise stated in a credit line to the data.



Total number of items endorsed/included in guidelines = 101

Fig. 1 Overview of statements throughout the 3 rounds of questionnaires. Total number of items endorsed/included in guidelines = 101