

Minerva Access is the Institutional Repository of The University of Melbourne

Author/s:

Jamshidi, M;Fagerholm, R;Khan, S;Aittomäki, K;Czene, K;Darabi, H;Li, J;Andrulis, IL;Chang-Claude, J;Devilee, P;Fasching, PA;Michailidou, K;Bolla, MK;Dennis, J;Wang, Q;Guo, Q;Rhenius, V;Cornelissen, S;Rudolph, A;Knight, JA;Loehberg, CR;Burwinkel, B;Marme, F;Hopper, JL;Southey, MC;Bojesen, SE;Flyger, H;Brenner, H;Holleczek, B;Margolin, S;Mannermaa, A;Kosma, VM;Van Dyck, L;Nevelsteen, I;Couch, FJ;Olson, JE;Giles, GG;McLean, C;Haiman, CA;Henderson, BE;Winqvist, R;Pylkäs, K;Tollenaar, RAEM;García-Closas, M;Figueroa, J;Hooning, MJ;Martens, JWM;Cox, A;Cross, SS;Simard, J;Dunning, AM;Easton, DF;Pharoah, PDP;Hall, P;Blomqvist, C;Schmidt, MK;Nevanlinna, H

Title:

SNP-SNP interaction analysis of NF- κ B signaling pathway on breast cancer survival

Date:

2015-01-01

Citation:

Jamshidi, M., Fagerholm, R., Khan, S., Aittomäki, K., Czene, K., Darabi, H., Li, J., Andrulis, I. L., Chang-Claude, J., Devilee, P., Fasching, P. A., Michailidou, K., Bolla, M. K., Dennis, J., Wang, Q., Guo, Q., Rhenius, V., Cornelissen, S., Rudolph, A., ... Nevanlinna, H. (2015). SNP-SNP interaction analysis of NF- κ B signaling pathway on breast cancer survival. *Oncotarget*, 6 (35), pp.37979-37994. <https://doi.org/10.18632/oncotarget.4991>.

Persistent Link:

<https://hdl.handle.net/11343/261596>

License:

[CC BY](#)

SNP-SNP interaction analysis of NF- κ B signaling pathway on breast cancer survival

Maral Jamshidi¹, Rainer Fagerholm¹, Sofia Khan¹, Kristiina Aittomäki², Kamila Czene³, Hatef Darabi³, Jingmei Li³, Irene L. Andrulis^{4,5}, Jenny Chang-Claude^{6,7}, Peter Devilee^{8,9}, Peter A. Fasching^{10,11}, Kyriaki Michailidou¹², Manjeet K. Bolla¹², Joe Dennis¹², Qin Wang¹², Qi Guo¹³, Valerie Rhenius¹³, Sten Cornelissen¹⁴, Anja Rudolph⁷, Julia A. Knight^{15,16}, Christian R. Loehberg¹⁷, Barbara Burwinkel^{18,19}, Frederik Marme^{19,20}, John L. Hopper²¹, Melissa C. Southey²², Stig E. Bojesen^{23,24}, Henrik Flyger²⁵, Hermann Brenner^{26,27,28}, Bernd Holleczeck²⁹, Sara Margolin³⁰, Arto Mannermaa^{31,32,33}, Veli-Matti Kosma^{31,32,33}, kConFab Investigators³⁴, Laurien Van Dyck^{35,36}, Ines Nevelsteen³⁷, Fergus J. Couch³⁸, Janet E. Olson³⁹, Graham G. Giles^{40,41}, Catriona McLean⁴², Christopher A. Haiman⁴³, Brian E. Henderson⁴³, Robert Winqvist^{44,45}, Katri Pylkäs^{44,45}, Rob A.E.M. Tollenaar⁴⁶, Montserrat García-Closas^{47,48}, Jonine Figueroa⁴⁹, Maartje J. Hooning⁵⁰, John W.M. Martens⁵⁰, Angela Cox⁵¹, Simon S. Cross⁵², Jacques Simard⁵³, Alison M. Dunning¹³, Douglas F. Easton^{12,13}, Paul D.P. Pharoah^{12,13}, Per Hall³, Carl Blomqvist⁵⁴, Marjanka K. Schmidt¹⁴ and Heli Nevanlinna¹

¹ Department of Obstetrics and Gynecology, University of Helsinki and Helsinki University Hospital, Helsinki, FI-00029 HUS, Finland

² Department of Clinical Genetics, University of Helsinki and Helsinki University Hospital, Helsinki, FI-00029 HUS, Finland

³ Department of Medical Epidemiology and Biostatistics, Karolinska Institutet, Stockholm SE-17177, Sweden

⁴ Lunenfeld-Tanenbaum Research Institute of Mount Sinai Hospital, Toronto, ON, M5G 1X5, Canada

⁵ Department of Molecular Genetics, University of Toronto, Toronto, ON, Canada

⁶ Department of Obstetrics and Gynecology, University of Ulm, Ulm, Germany

⁷ Division of Cancer Epidemiology, German Cancer Research Center (DKFZ), Heidelberg, Germany

⁸ Department of Pathology, Leiden University Medical Center, Leiden, The Netherlands

⁹ Department of Human Genetics, Leiden University Medical Center, Leiden, The Netherlands

¹⁰ Department of Gynecology and Obstetrics, University Hospital Erlangen, Friedrich-Alexander University Erlangen-Nuremberg, Erlangen, Germany

¹¹ Department of Medicine, Division of Hematology and Oncology, University of California at Los Angeles, Los Angeles, CA, USA

¹² Centre for Cancer Genetic Epidemiology, Department of Public Health and Primary Care, University of Cambridge, Cambridge, UK

¹³ Centre for Cancer Genetic Epidemiology, Department of Oncology, University of Cambridge, Cambridge, UK

¹⁴ Netherlands Cancer Institute, Antoni van Leeuwenhoek hospital, Amsterdam, The Netherlands

¹⁵ Prosserman Centre for Health Research, Lunenfeld-Tanenbaum Research Institute of Mount Sinai Hospital, Toronto, ON, M5G 1X5, Canada

¹⁶ Division of Epidemiology, Dalla Lana School of Public Health, University of Toronto, Toronto, ON, M5S 1A8, Canada

¹⁷ Department of Gynaecology and Obstetrics, University Hospital Erlangen, Friedrich-Alexander University Erlangen-Nuremberg, Comprehensive Cancer Center Erlangen-EMN, Erlangen, Germany

¹⁸ Molecular Epidemiology Group, German Cancer Research Center, Heidelberg, Germany

¹⁹ Department of Obstetrics and Gynecology, University of Heidelberg, Heidelberg, Germany

²⁰ National Center for Tumor Diseases, University of Heidelberg, Heidelberg, Germany

²¹ Centre for Epidemiology and Biostatistics, Melbourne School of Population and Global Health, The University of Melbourne, Melbourne, Victoria, Australia

²² Department of Pathology, The University of Melbourne, Melbourne, Victoria, Australia

²³ Faculty of Health and Medical Sciences, University of Copenhagen, Copenhagen, Denmark

- ²⁴ Department of Clinical Biochemistry, Herlev Hospital, Copenhagen University Hospital, Herlev, Denmark
- ²⁵ Department of Breast Surgery, Herlev Hospital, Copenhagen University Hospital, Herlev, Denmark
- ²⁶ Division of Clinical Epidemiology and Aging Research, German Cancer Research Center (DKFZ), Heidelberg, Germany
- ²⁷ Division of Preventive Oncology, German Cancer Research Center (DKFZ) and National Center for Tumor Diseases (NCT), Heidelberg, Germany
- ²⁸ German Cancer Consortium (DKTK), German Cancer Research Center (DKFZ), Heidelberg, Germany
- ²⁹ Saarland Cancer Registry, Saarbrücken, Germany
- ³⁰ Department of Oncology - Pathology, Karolinska Institutet, Stockholm, Sweden
- ³¹ School of Medicine, Institute of Clinical Medicine, Pathology and Forensic Medicine, University of Eastern Finland, Kuopio, Finland
- ³² Cancer Center of Eastern Finland, University of Eastern Finland, Kuopio, Finland
- ³³ Imaging Center, Department of Clinical Pathology, Kuopio University Hospital, Kuopio, Finland
- ³⁴ Peter MacCallum Cancer Center, Melbourne, Victoria, Australia
- ³⁵ Vesalius Research Center (VRC), VIB, Leuven, Belgium
- ³⁶ Laboratory for Translational Genetics, Department of Oncology, University of Leuven, Leuven, Belgium
- ³⁷ Multidisciplinary Breast Center, Medical Oncology, University Hospital Leuven, Leuven, Belgium
- ³⁸ Department of Laboratory Medicine and Pathology, Mayo Clinic, Rochester, MN, USA
- ³⁹ Department of Health Sciences Research, Mayo Clinic, Rochester, MN, USA
- ⁴⁰ Cancer Epidemiology Centre, Cancer Council Victoria, Melbourne, Australia
- ⁴¹ Centre for Epidemiology and Biostatistics, School of Population and Global health, The University of Melbourne, Melbourne, Australia
- ⁴² Anatomical Pathology, The Alfred Hospital, Melbourne, Australia
- ⁴³ Department of Preventive Medicine, Keck School of Medicine, University of Southern California, Los Angeles, CA, USA
- ⁴⁴ Laboratory of Cancer Genetics and Tumor Biology, Cancer Research and Translational Medicine, Biocenter Oulu, University of Oulu, Oulu, Finland
- ⁴⁵ Laboratory of Cancer Genetics and Tumor Biology, Northern Finland Laboratory Centre NordLab, Oulu, Finland
- ⁴⁶ Department of Surgical Oncology, Leiden University Medical Center, Leiden, The Netherlands
- ⁴⁷ Division of Genetics and Epidemiology, Institute of Cancer Research, Sutton, SM2 5NG, UK
- ⁴⁸ Breakthrough Breast Cancer Research Centre, Division of Breast Cancer Research, The Institute of Cancer Research, London, SW3 6JB, UK
- ⁴⁹ Division of Cancer Epidemiology and Genetics, National Cancer Institute, Rockville, MD, USA
- ⁵⁰ Department of Medical Oncology, Erasmus MC Cancer Institute, AE Rotterdam, The Netherlands
- ⁵¹ Sheffield Cancer Research, Department of Oncology, University of Sheffield, Sheffield, UK
- ⁵² Academic Unit of Pathology, Department of Neuroscience, University of Sheffield, Sheffield, UK
- ⁵³ Centre Hospitalier Universitaire de Québec Research Center, Laval University, Québec City, Canada
- ⁵⁴ Department of Oncology, University of Helsinki and Helsinki University Central Hospital, Helsinki, HUS, Finland

Correspondence to: Heli Nevanlinna, **email:** heli.nevanlinna@hus.fi

Keywords: breast cancer, survival analysis, SNP-SNP interaction, NF- κ B pathway

Received: April 09, 2015

Accepted: July 16, 2015

Published: July 22, 2015

This is an open-access article distributed under the terms of the Creative Commons Attribution License, which permits unrestricted use, distribution, and reproduction in any medium, provided the original author and source are credited.

ABSTRACT

In breast cancer, constitutive activation of NF- κ B has been reported, however, the impact of genetic variation of the pathway on patient prognosis has been little studied. Furthermore, a combination of genetic variants, rather than single polymorphisms, may affect disease prognosis. Here, in an extensive dataset ($n = 30,431$) from the Breast Cancer Association Consortium, we investigated the association of 917 SNPs in 75 genes in the NF- κ B pathway with breast cancer prognosis. We explored SNP-SNP interactions on survival using the likelihood-ratio test comparing multivariate Cox'

regression models of SNP pairs without and with an interaction term. We found two interacting pairs associating with prognosis: patients simultaneously homozygous for the rare alleles of rs5996080 and rs7973914 had worse survival ($HR_{interaction}$ 6.98, 95% CI=3.3-14.4, $P=1.42E-07$), and patients carrying at least one rare allele for rs17243893 and rs57890595 had better survival ($HR_{interaction}$ 0.51, 95% CI=0.3-0.6, $P=2.19E-05$). Based on in silico functional analyses and literature, we speculate that the rs5996080 and rs7973914 loci may affect the BAFFR and TNFR1/TNFR3 receptors and breast cancer survival, possibly by disturbing both the canonical and non-canonical NF- κ B pathways or their dynamics, whereas, rs17243893-rs57890595 interaction on survival may be mediated through TRAF2-TRAIL-R4 interplay. These results warrant further validation and functional analyses.

INTRODUCTION

Aberrant regulation of the NF- κ B is common in human breast cancer cell lines and in primary tumor cells from patients with breast cancer [1, 2]. Dysregulation of the NF- κ B signaling pathway has been shown to contribute to cancer development and progression as well as to chemo- and radiotherapy-resistance [3], and selective inhibition of the NF- κ B-activating pathway genes has been reported to sensitize breast cancer cell lines to doxorubicin [2, 4-6]. To date, few studies have investigated whether inherited genetic variation in the NF- κ B pathway is associated with breast cancer prognosis [7, 8]. Our previous research indicates a link between breast cancer outcome and the *NQO1* gene, the expression and function of which is closely connected to the NF- κ B network [9-12]. Recently, a breast cancer survival study on SNPs within or in the 100kb flanking region of genes implicated in human immunology and inflammation suggested that rs4458204 affects breast cancer survival in patients with ER-negative tumors who have been treated with chemotherapy. Rs4458204 is located 41.5 kb upstream of the chemokine ligand 20 (CCL20) which is a downstream target of NF- κ B [13].

Two sub-pathways are proposed to account for the NF- κ B activation: the canonical, and the non-canonical NF- κ B pathway. The canonical pathway, also referred to as the classic pathway, mainly activates the NF- κ B1 dimers (RelA:p50). Under resting conditions, the NF- κ B1 dimers are bound to I κ B- α and retained in an inactive form in the cytoplasm. When the canonical pathway is stimulated by pro-inflammatory signals (e.g. TNF α) through their receptors (e.g. TNFR1) the signal is transduced through a FADD and TRAF2 assembly to the IKK β -NEMO complex which phosphorylates the I κ B molecules, and this in turn leads to degradation of I κ B- α . Upon I κ B- α degradation, the NF- κ B1 dimers are free to translocate to the nucleus where they activate target gene transcription. The canonical pathway therefore consists of the ligands, the receptors, the IKK complex, I κ B proteins and NF- κ B dimers which together can lead to either cell survival or cell death [14-17].

The non-canonical pathway involves the activation

of IKK α by the TNF cytokines (e.g. BAFF and LT- β through their receptors (e.g. BAFFR and TNFR3, also known as LT- β R). This results in the phosphorylation and degradation of p100, and the subsequent formation of the p52 (processed NF- κ B2) and RelB complex. The p52-RelB complex then translocates to the nucleus and induces the expression of a different set of target genes than those induced by the canonical pathway [18, 19]. Some overlap exists between the canonical and non-canonical pathways: signals associated with cell survival or apoptosis can be transmitted via the same ligand and/or receptor in both pathways [20].

Here, we investigated the association between breast cancer patient survival and SNPs residing within or in the 50-kb flanking region of 75 genes in the NF- κ B activating pathway using an extensive data set of the Breast Cancer Association Consortium (BCAC). It is plausible that a combination of genetic variants, rather than a single polymorphism, may affect the prognosis for a complex disease such as breast cancer. For instance, a recent combinatorial RNAi screening of cancer genes, which are frequently co-altered in primary breast cancer, identified interacting gene pairs that associate with patient survival [21]. Here, in addition to a single SNP association study, we present two-SNP interaction analysis, which is more feasible to conduct and interpret than multiple-SNP interactions [22]. The panel of markers included 917 SNPs for 75 candidate genes involved in the activation of the NF- κ B pathway available in a custom Illumina iSelect genotyping array designed for the Collaborative Oncological Gene-Environment Study (iCOGS) [23].

RESULTS

SNP association with prognosis

Altogether 30,431 invasive breast cancer cases of European ancestry from 24 BCAC studies participated in this study (Supplementary Table 1) [23]. A total of 917 SNPs available in the BCAC iCOGS data set (See material and methods) were included in the analyses to

Table 1: Multivariate Cox' regression models to assess the interaction between rs5996080 and rs7973914 by recessive model of inheritance.

Model without an interaction term

	n(death)	HR	95% CI	P
rs5996080 (A, a)				
AA+Aa	30173 (3345)	1 (Ref.)		
aa	258 (30)	1.07	(0.7-1.5)	0.695
rs7973914 (B, b)				
BB+Bb	25321 (2800)	1 (Ref.)		
bb	5106 (575)	1.03	(0.9-1.1)	0.461

Model with an interaction term(aa X bb)

	n(death)	HR	95% CI	P
rs5996080 (A, a)				
AA+Aa		1 (Ref.)		
aa		0.64	(0.4-1.0)	0.079
rs7973914 (B, b)				
BB+Bb		1 (Ref.)		
bb		1.01	(0.9-1.1)	0.809
Interaction				
aa X bb	46(14)	6.98	(3.3-14.4)	1.42E-07

Likelihood ratio test between the models*

P_{corrected}
0.003

All the models are adjusted for study

*likelihood ratio test comparing Cox' regression model without and with an interaction term.

investigate the association of the SNPs and breast cancer patient survival. All SNPs were located within, or in a 50kb flanking region of 75 candidate genes involved in the activation of the NF-κB pathway. All survival analyses were adjusted for study. Ten-year overall survival (death due to breast cancer or other reasons) was used as the end-point in these analyses for reasons of data availability and consistency. The survival analyses of the 917 single SNPs studied here revealed no significant ($P_{\text{Corrected}} > 0.01$) association with patient survival (Supplementary Table 2).

To discover plausible epistatic/non-additive interacting SNPs associating with prognosis, we conducted a two-SNP interaction survival analysis using the likelihood ratio test comparing multivariate Cox' regression models of pairs of SNPs without and with an interaction term (SNP1+SNP2 vs. SNP1+SNP2+(SNP1*SNP2), respectively) (see methods/statistical analyses). Using Cox proportional hazard models, the recessive (AA = 0, Aa = 0, aa = 1) and dominant (AA = 0, Aa = 1, aa = 1) models were assessed for all the SNPs. With a sample size of 30,431 with 3375

events and the average MAF of 23.4%, we had 80% power to detect interaction terms with HR above 1.4 (or $1/1.4 = 0.6$) and HR of 6.2 (or $1/6.2 = 0.16$) in the dominant and recessive models respectively. We found one interacting SNP pair, rs5996080 and rs7973914, in the recessive model and another one, rs17243893 and rs57890595, in the dominant model which passed these HR thresholds with a corrected p-value threshold <0.05 .

Under the recessive model, a pair-wise interaction between rs5996080 (A/G, MAF = 8%) and rs7973914 (G/A, MAF = 40%) was found to be associated with patient survival: patients carrying the homozygous rare allele for both SNPs (rs5996080-GG, rs7973914-AA) had worse overall survival compared to carriers of at least one common allele (HR_{interaction} 6.98, 95% CI = 3.3-14.4, $P = 1.42E-07$, Table 1). The interaction was statistically significant in a likelihood-ratio test, compared to a Cox model without an interaction term ($P_{\text{likelihood-ratio-corrected}} = 0.003$) (Table 1). Absolute uncorrected survival rates of genotype combination categories were compared using Kaplan-Meier curves (Figure 1). Supplementary table 3 lists the likelihood-ratio test p values obtained also for the SNPs nearby or in LD with the rs5996080-rs7973914 interacting pair. Due to the limited power (small number of patients and less than 5 events per subgroup), no subgroup analyses by ER status, lymph node status, and chemotherapy treatment (see methods) were conducted for this interacting pair.

Using the dominant model, we found a pair-wise interaction between rs17243893 (A/G, MAF = 5%) and rs57890595 (A/C, MAF = 11%) to be associated with

patient survival: Patients simultaneously carrying at least one rare allele for both variants (rs17243893-AG+GG, rs57890595-AC+CC) had better overall survival compared to the patients with common homozygous genotypes (HR_{interaction} 0.51, 95% CI = 0.3-0.6, $P = 2.19E-05$) (Table 2). The interaction was statistically significant ($P_{\text{likelihood-ratio-corrected}} = 0.005$) (Table 2). Absolute uncorrected survival rates of genotype combination categories were compared using Kaplan-Meier curves (Figure 2). Supplementary table 4 lists the likelihood-ratio test p values obtained also for the SNPs nearby or in LD with the rs17243893-rs57890595 interacting pair. The effect of the SNP-SNP interaction on patient survival was consistent between the subgroups studied (ER positive vs. negative, lymph node positive vs. negative, chemotherapy-treated vs. non-treated patients) and was not confined to any specific subset of patients (Supplementary Table 5, Supplementary Figure 1).

Association of the interacting pairs with tumor characteristics

The association between clinical and histopathological features of tumors and genotype combinations of the interacting SNP pairs is summarized in Supplementary Table 6a and b. No significant association was found for the SNP pair from the recessive model. The interacting SNP pair found with the dominant model associated with nodal status (N), with a borderline significant p value of 0.010, and may also associate with

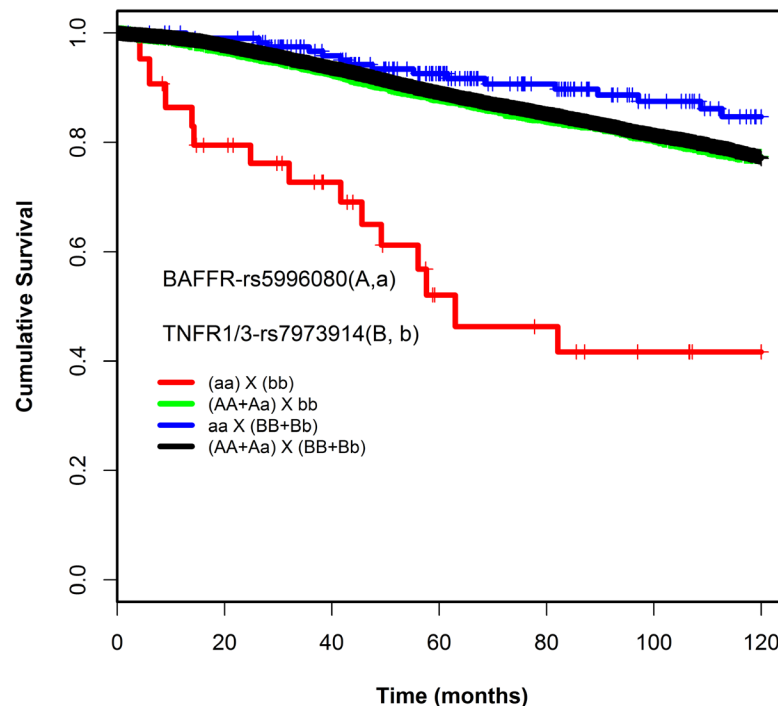


Figure 1: Kaplan-Meier survival curves of the combination genotypes of rs5996080 and rs7973914 (recessive model)

Table 2: Multivariate Cox' regression models to assess the interaction between rs17243893 and rs57890595 by dominant model of inheritance.

Model without an interaction term

	n (death)	HR	95% CI	P
rs17243893 (A, a)				
AA	26994 (3018)	1 (Ref.)		
Aa+aa	3096 (334)	0.95	(0.8-1.0)	0.464
rs57890595				
BB	23393 (2590)	1 (Ref.)		
Bb+bb	6781 (756)	1.01	(0.9-1.0)	0.87

Model with an interaction term ((Aa+aa) X (Bb+bb))

	n (death)	HR	95% CI	P
rs17243893 (A, a)				
AA		1 (Ref.)		
Aa+aa		1.09	(0.9-1.2)	0.139
rs57890595				
BB		1 (Ref.)		
Bb+bb		1.07	(0.9-1.1)	0.116
Interaction				
(Aa+aa) X (Bb+bb)	719 (52)	0.51	(0.3-0.6)	2.19E-05

Likelihood ratio test between the models*

	P_{corrected}
Corrected	0.005

All the models are adjusted for study

*likelihood ratio test comparing Cox' regression models without and with an interaction term.

metastasis at diagnosis (M), but the difference was not statistically significant. Carriers of the protective genotype combinations (rs17243893-AG+GG and rs57890595-AC+CC) had also a lower frequency of nodal or distant metastasis.

Corresponding genes in the NF-κB activating pathway

Of the recessive SNP pair, rs5996080 resides in chromosome 22, in the flanking region (31.5 kb

downstream) of the NF- κ B pathway gene *BAFFR* (B-cell activating factor receptor, also known as *TNFRSF13C*). rs5996080 is in strong linkage disequilibrium ($r^2 = 1$) with 15 SNPs located in *BAFFR*. The other SNP in the pair, rs7973914, is located on chromosome 12, 8kb upstream of the NF- κ B pathway gene *TNFR3* (TNFR superfamily member 3, also known as *LTBR*) and 27kb upstream of *TNFR1* (tumor necrosis factor receptor superfamily, member 1a, also known as *TNFRSF1A*). rs7973914 resides in a short haplotype block with very few SNPs.

Of the dominant model SNP pair, rs17243893 is located in chromosome 9, within the intron of NF- κ B pathway gene *TRAF2* (TNF receptor associated factor 2). The other SNP in the pair, rs57890595, is located in the chromosome 8, and lies in the intronic region of NF- κ B pathway gene *TRAIL-R4* (TNF-related apoptosis ligand receptor 4, also known as *TNFRSF10D*). Other nearby genes include *TNFRSF10A* and *TNFRSF10C*.

Annotation of established functional elements in the site of interacting pairs based on ENCODE data

To investigate the possible functional role of the interacting SNPs or other SNPs in the surrounding LD regions ($r^2 > 0.2$), we utilized the ENCODE-based functional annotations at the Haploreg and RegulomeDB

databases in order to determine whether they are located within genomic regulatory elements in human mammary epithelial cells (HMEC).

For the recessive SNP pairs, rs5996080 and rs7973914, 35 of the SNPs in the rs5996080 locus may potentially lead to alteration of regulatory elements as defined by transcription factor binding motifs, histone modifications, DNase sites and protein binding regions in HMEC. Of these SNPs, 26 are in strong LD with rs5996080 (r^2 and/or $D' > 0.8$). The Haploreg annotation indicated that in HMECs, the majority of rs5996080 proxies are located in regions with enhancer histone marks. We identified 10, 22, and 6 SNPs mapping to regions with promoter histone marks, enhancer histone marks, and DNase hypersensitivity sites, respectively. Of the SNPs mapping to DNase hypersensitivity sites, four were overlapping with regions with promoter histone marks, and three were overlapping with regions with enhancer histone marks (Supplementary Table 7a). According to ENCODE data, rs117492772 ($r^2 = 0.86$ with rs5996080) alters a putative transcription factor binding motif of NF- κ B. The rs5996080 SNP itself changes the putative motif binding of ER α -a. As for rs7973914, four SNPs in the LD region map to regulatory regions with enhancer histone marks in HMEC. Of these, three SNPs are in strong LD with rs7973914 (r^2 and/or $D' > 0.8$) (Supplementary Table 7b).

For the dominant model SNPs, rs17243893 and

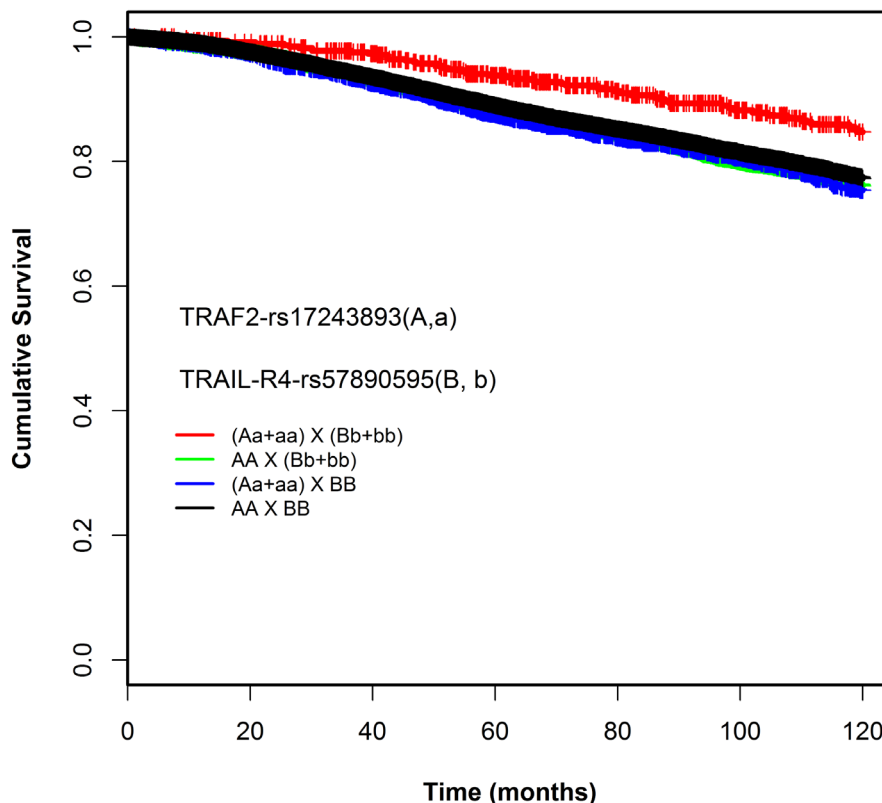


Figure 2: Kaplan-Meier survival curves of the combination genotypes of rs17243893 and rs57890595 (dominant model)

rs57890595, *in silico* analysis was limited by the short/undefined haplotypes, as indicated above. Haploreg and RegulomeDB annotation maps two SNPs in the rs17243893 locus (rs17243893 and rs35253986, $r^2 = 1$ and 0.27, respectively) in HMEC to regions with enhancer histone mark and DNase hypersensitivity sites. (Supplementary Table 7c). No SNPs mapped to HMEC regulatory elements at the rs57890595 locus.

Association of the interacting SNPs and the expression levels of nearby NF- κ B activating pathway genes

To further evaluate whether the interacting pair SNPs might have a functional effect or be related to other functional SNPs that affect the expression level of their corresponding genes in NF- κ B activating pathway, we performed eQTL analysis using two publicly available data sets consisting of genotype and gene expression data: TCGA and METABRIC. To this end, we analyzed all available SNPs in the LD region ($r^2 > 0.1$). The interacting SNPs themselves were not genotyped in either of the data sets, but are represented through LD.

For the recessive model SNP pair, an rs5996080 proxy (rs9620000, $r^2 = 1$) consistently associated with higher expression of *BAFFR* in both the TCGA tumor ($P = 0.049$) and METABRIC data sets ($P = 0.003$). We also detected one rs5996080 proxy (rs17002737, $r^2 = 0.79$) which associated with the expression of *TNFR1* ($P = 0.049$), and several SNPs in the locus that correlated positively with the expression of *TNFR3* (rs2269658: $r^2 = 0.5$, $D' = 0.8$, $p = 0.00006$; rs9620000: $r^2 = 1$, $p = 0.003$; rs5996088: $r^2 = 1$, $p = 0.002$; rs1023497: $r^2 = 0.4$, $D' = 1$, $p = 0.01$; and rs133367: $r^2 = 0.2$, $D' = 1$, $p = 0.04$). There were only four proxies of rs7973914 available in the TCGA/METABRIC data, and none of them associated significantly with the expression level of either *TNFR1/3* or *BAFFR*.

For the dominant model SNP pair, rs17243893 and rs57890595, we did not find any significant correlation between the expression of the few rs17243893 proxies and *TRAF2*, nor with *TRAIL-R4*. We identified one SNP rs57890595 in the TCGA tumor data (rs12546238, $r^2 = 0.2$), and one (rs4278155, $r^2 = 0.2$) in the normal tissue data ($n = 85$), that correlated with the expression of *TRAIL-R4* ($P = 0.004$). Another SNP in the region rs57890595

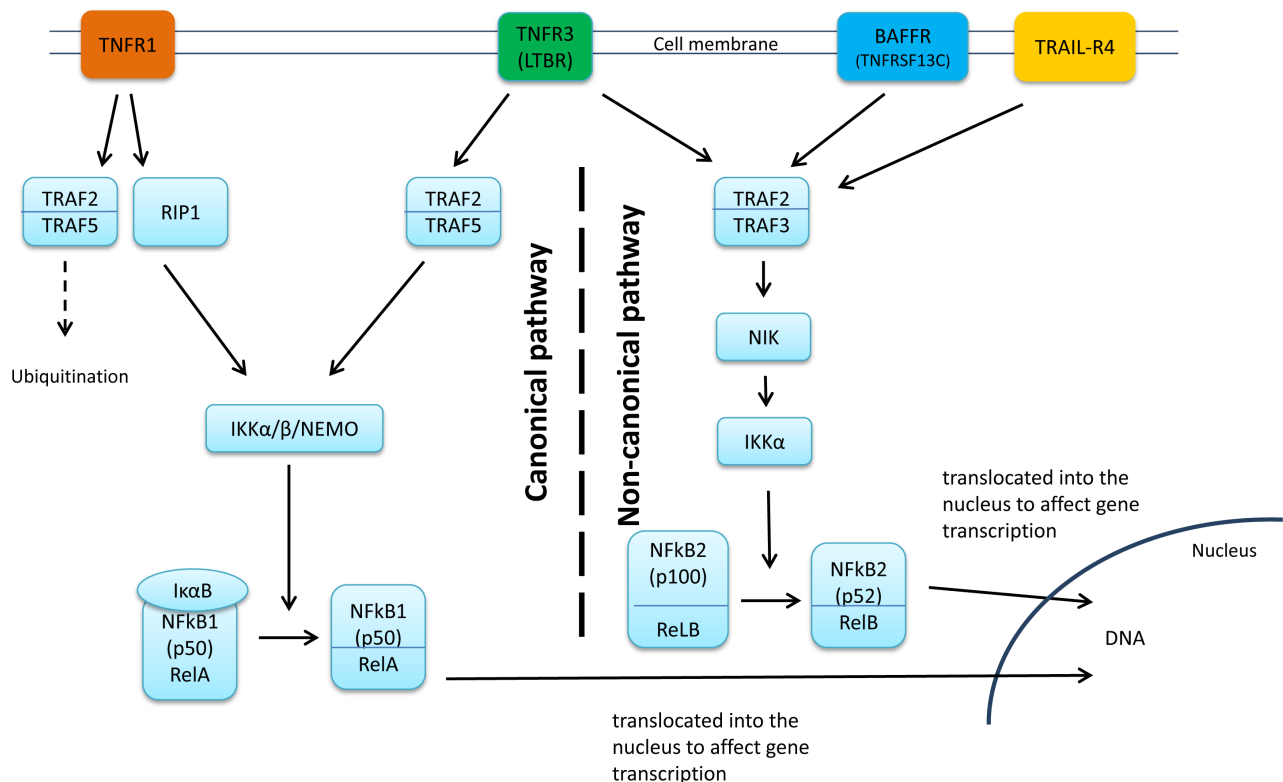


Figure 3: Genes annotated to the SNP pair significant in the recessive model. BAFFR activates the NF- κ B, mainly through the non-canonical pathway whereas TNFR1 activates the canonical NF- κ B pathway and TNFR3 activates both pathways. The survival effect observed in the SNP interaction analyses might be due to simultaneous perturbation of BAFFR and TNFR1/TNFR3 which might affect both the canonical and the non-canonical NF- κ B pathways or their dynamics. Genes annotated to the SNP pair significant in the dominant model: TRAF2 functions as a molecular bridge linking the receptors to downstream kinases. TRAIL-R4 has been suggested to activate the non-canonical pathway through TRAF2-NIK-*IKK* cascade. The observed survival effect by SNP interaction might be mediated through TRAF2 and TRAIL-R4 interplay.

(rs4871880, $r^2 = 0.1$) associated with the expression level of *TRAF2* ($P = 0.0006$) in the METABRIC data.

DISCUSSION

The postulated association of the NF- κ B pathway with tumor progression and patient survival could be affected by interactions of multiple loci, in addition to single locus effects. Here, we aimed to highlight plausible epistatic/non-additive interactive effects of SNPs near relevant genes for further validation and functional analyses. We explored the NF- κ B pathway by assessing two-way interactions of 917 SNPs in 75 genes within the NF- κ B activating pathway and found evidence of interaction between two pairs of SNPs corresponding to five genes: rs5996080 and rs7973914 by the recessive model, and rs17243893 and rs57890595 by the dominant model. We discovered these associations through a semi-parametric approach, with large sample size, and stringent p value and Hazard ratio criteria determined by power analysis for each model of inheritance. None of the SNPs identified here exerted statistically significant survival effects individually.

Using the recessive model, we identified an interaction between rs5996080, near the gene *BAFFR*, and rs7973914, located in the proximity of *TNFR1* and *TNFR3*. While the SNPs in either of the two loci did not individually associate with survival, they appear to have an interactive prognostic effect: compared to carriers of at least one common allele, the patients carrying the homozygous rare allele of both SNPs had worse 10-year overall survival. We did not observe any statistically significant association between the interacting genotype combination and the clinical and pathological characteristics of the tumors, although it must be noted that we had low power to detect such an association in the first place due to the limited number of cases in the interacting genotype category.

The candidate NF- κ B genes (*BAFFR*, *TNFR1* and *TNFR3*) in these loci are in general TNF receptors (Figure 3). Physically, rs5996080 resides in the intron of another gene, *SREBF2* (sterol regulatory element-binding transcription factor-2), and rs7973914 is in the intron of *SCNN1A* (sodium channel non-voltage-gated 1 alpha subunit). *SREBF2* gene is a lipogenesis transcription factor which has been shown to be up-regulated in a breast cancer cell line (HCC1143) compared to normal mammary epithelial cells (MCF10A) [24]. *SREBF2* negatively regulates SMAD3 [25] which is demonstrated to physically interact with IKK α (the NF- κ B activator). Through this interaction, IKK α is suggested to control the binding of the SMAD complex to DNA and therefore, contribute to the tumor-promoting function of the TGF-beta/SMAD signaling pathway in human MDA-MB-231 breast cancer cell line. However, this process appears to be NF- κ B-independent [26, 27]. For *SCNN1A*, a read-through fusion

transcript of *SCNN1A-TNFR1* has been recently identified in breast cancer cell lines as well as in primary breast cancer tumors, and was not detected in normal tissues [28]. Interestingly, an rs5996080 proxy (rs5996088: $r^2 = 1$) associates with decreased expression of *SREBF2* and *SCNN1A* ($p = 0.014$ and $p = 0.0007$ respectively; TCGA dataset only) which might also contribute to the observed interactive survival effect. *BAFFR*, the candidate NF- κ B gene in the locus with significant eQTL association with rs5996080, is one of the best known receptors involved in the non-canonical NF- κ B pathway and is known to be the physiological signal that promotes the processing of RelB/P100 to RelB/P52 resulting in the activation of NF- κ B2 [29]. Although *BAFFR* preferentially induces the non-canonical pathway, it has been suggested to activate the canonical pathway as well. However, contrary to its activating role in the non-canonical pathway, the *BAFFR* impact on the canonical pathway appears minor, and remains ambiguous [30]. *TNFR1* signaling, on the other hand, activates the canonical RelA/ NF- κ B1 pathway through the induction of the IKK complex, while *TNFR3* signaling can activate both the canonical and the non-canonical RelB/NF- κ B2 pathways through the processing of P100 to P52. Perturbations in the function of these genes could therefore be hypothesized to alter the dynamics between pro-apoptotic and anti-apoptotic NF- κ B signaling pathways, which in turn may influence cancer progression and outcome, possibly in an epistatic manner. While the biological mechanism behind the SNP-SNP interaction between these loci can only be speculated on at this point, our ENCODE and eQTL analyses indicated that SNPs at both of these loci may influence gene expression, particularly rs5996080, which associates with the higher expression of both *BAFFR* and *TNFR1/TNFR3*. This is in line with the poor breast cancer survival observed in this study, due to the *BAFFR*-mediated activation of the non-canonical pathway contributing to cell survival [31, 32] and the suggested involvement of the *TNFR3* signaling in inflammation-induced carcinogenesis [33]. Indeed, the blockade of the *TNFR3* signaling has been used as anti-inflammatory, anti-cancer therapy in some experimental models [34, 35]. Additionally, the ENCODE data indicated that an rs5996080 proxy (rs117492772, $r^2 = 0.86$) alters a binding site for the NF- κ B transcription factor itself, as well as a putative ER α binding site. In light of this, it would have been interesting to investigate the interaction in subgroups defined by ER status, but such an analysis was unfortunately not feasible due to the limited number of cases in the interacting genotype category. Taken together, we speculate that the combination of the rare homozygous alleles for rs5996080 and rs7973914, or the causative variants in LD with them, might simultaneously compromise the *BAFFR* and *TNFR1/TNFR3* receptors' function (Figure 3) and breast cancer survival by perturbing both the canonical and the non-canonical NF- κ B pathways or their dynamics. However,

it is possible that the observed SNP interaction may be due to more complex survival effects by multiple genes in the rs5996080 and rs7973914 loci. This speculation requires further validation, and functional analyses.

Under the dominant model, we identified an interaction between rs17243893 and rs57890595: compared to the patients with wild type homozygous genotypes, patients carrying at least one rare allele for both variants have a better 10-year breast cancer survival. Interestingly, the genotype combination associating with improved survival also tended to associate with negative axillary lymph node status and, although not to a statistically significant degree, less frequent distant metastasis at diagnosis.

rs17243893 is an intronic SNP located in TRAF2, an oncogene which activates NF- κ B in epithelial cancers including breast cancer, by activating the NIK-IKK complex (Figure 3). TRAF2 function is best characterized in the TNFR1 signaling pathway [36]. TNFRSF signaling is primarily regulated via TRAFs, and by the activation of NF- κ B [37]. The other SNP in this pair, rs57890595, lies in the intronic region of the TRAIL receptor *TRAIL-R4*. Evidence suggests that NF- κ B activation by *TRAIL-R4* takes place through a TRAF2-NIK-IKK cascade. This implicates an interplay between TRAF2 and TRAIL-R4 that ultimately promotes cell survival [38]. In the site of rs17243893, our Haploreg analyses show regulatory motif alteration for AP-1: a-c-Fos and c-Jun family member which has been suggested to be reciprocally activated by NF- κ B. It has been shown that the inhibition of NF- κ B results in the inhibition of *fos* expression and consequently the AP-1 activity in pancreatic adenocarcinoma cell lines (MDApanc-28) [39]. Unfortunately, since neither of the two SNPs in this pair was represented in the TCGA or METABRIC gene expression dataset, we have no compelling evidence that links this pair with the expression of *TRAIL-R4* and *TRAF2*. Nevertheless, these two genes remain plausible candidates for the prognostic interactive effect: TRAF2 /TRAIL-R4-mediated NF- κ B activation results in cell survival which would be consistent with the poor prognosis observed in this study under the hypothesis that the rs17243893-rs57890595 (or the causative variants in LD with them) interaction potentiates or otherwise dysregulates this signaling cascade.

In summary, in analyses of 917 SNPs in 75 genes of the NF- κ B activating pathway, we identified two SNP-SNP interactions to be associated with survival of the breast cancer patients. We have searched for regulatory elements in these loci and examined their influence on gene expression, and we propose a biological rationale for the observed effects. Yet, one must remain aware of potential data interpretation biases introduced by pathway-based SNP selection. For example, long-distance regulatory effects may extend well beyond the local LD block, and the observed prognostic interactions may therefore be caused by genes other than the primary

candidate genes or their neighbors. However, we did not observe significant association between the SNPs in LD with the interacting SNP pairs and the expression level of genes elsewhere in the genome in TCGA and METABRIC dataset consistently. A weakness of our study is that large-scale analyses are potentially at the risk of inflated type I error. As even seemingly significant results can easily be false positives in an underpowered analysis, to address this, we chose to use power calculations to define robust HR thresholds for this study [40]. Nevertheless, in addition to the multiple testing correction methods applied here, further validation of the interaction SNP pairs is required. Moreover, with this approach we were only able to discover interactions with fairly large effect sizes, while any true interactive effects with low hazard ratios would remain undetected. Furthermore, even though the SNPs were selected for their proximity with the NF- κ B activating pathway genes and the observed survival effects are consistent with a plausible biological rationale, it is also possible that the observed effect is partially or wholly caused by other nearby genes, especially as the rs5996080 and rs7973914 loci are physically located in introns of other, non-NF- κ B, genes. Further functional studies are required to identify the causal elements of the detected effects on patient survival.

The prognosis of complex diseases such as breast cancer is a dynamic process which is influenced by a large number of clinicopathological factors, and is likely also affected by a combination of genetic variants. Compared to an agnostic genome wide analysis, the pathway-oriented approach tested here may increase the chance of obtaining biologically meaningful results with statistical significance regarding SNP-SNP and gene-gene interactions in a prognostic and/or predictive context, although it also necessarily introduces a degree of bias based on the initial hypothesis. These findings can then contribute to functional analyses elucidating the underlying mechanisms of the interplay between genes involved in the NF- κ B pathway, and their influence on breast cancer progression and survival.

MATERIAL AND METHODS

Ethics statement

Investigation has been conducted in accordance with the ethical standards and according to the Declaration of Helsinki and according to national and international guide. All participants in these studies had provided written consent for the research. All participating studies were approved by the respective ethical review boards and ethics committees: ABCFS (The University of Melbourne Health Sciences Human Ethics Sub-Committee (HESC)), ABCS (Leiden University Medical Center (LUMC) Commissie

Medische Ethiek and Protocol Toetsingscommissie van het Nederlands Kanker Instituut/Antoni van Leeuwenhoek Ziekenhuis), BBCC (Friedrich-Alexander-Universitat Erlangen-Nurnberg Medizinische Fakultat Ethik-Commission), BSUCH (Medizinische Fakultat Heidelberg Ethikkommission), CGPS (Kobenhavns Amt den Videnskabetiske Komite), ESTHER(Ruprecht-Karls-Universitat Medizinische Fakultat Heidelberg Ethikkommission), HEBCS (Helsingin ja uudenmaan sairaanhoitopiiri (Helsinki University Central Hospital Ethics Committee)), KARBAC (Lokala Forskningsetikkommitten Nord), KBCP (Pohjois-Savon Sairaanhoidopiirin Kuntayhtyma Tutkimuseettinen Toimikunta), kConFab/AOCS (kConFab: The Queensland Institute of Medical Research Human Research Ethics Committee (QIMR-HREC)), LMBC (Commissie Medische Ethiek van de Universitaire Ziekenhuizen Kuleuven), MARIE (Ruprecht-Karls-Universitat Medizinische Fakultat Heidelberg Ethikkommission), MCBCS (Mayo Clinic IRB), MCCS (The Cancer Council Victoria Human Research Ethics Committee), MEC (University of Southern California Health Sciences Campus IRB), OBCS (Ethical Committee of the Medical Faculty of University of Oulu and Northern Ostrobothnia Hospital District Ethical Committee), OFBCR (Mount Sinai Hospital Research Ethics Board), ORIGO (Medical Ethical Committee and Board of Directors of the Leiden University Medical Center (LUMC)), PBCS (National Institute of Health (NIH) IRB), pKARMA (Regionala Etikprovningnamnden i Stockholm (Regional Ethical Review Board in Stockholm)), RBCS (Medische Ethische Toetsings Commissie Erasmus Medisch Centrum), SASBAC (Regionala Etikprovningnamnden i Stockholm (Regional Ethical Review Board in Stockholm)), SBCS (South Sheffield Research Ethics Committee), SEARCH (Multi Centre Research Ethics Committee (MREC)).

Study subjects

We used primary data from the studies participating in BCAC [23]. All studies had received approval of relevant local human ethical or institutional boards (see Ethics statement). For each study, the minimum number of events (death) required to enter the analyses was 10. A total of 24 studies contributed here, with data on altogether 30,431 invasive breast cancer cases of European ancestry (Supplementary Table 1). The contributing groups provided data on conventional prognostic and predictive markers: age of diagnosis, tumor grade, size, nodal status, metastases at diagnosis, histological type, estrogen receptor, progesterone receptor, HER2 status, and follow-up and vital status [41].

SNP selection and genotyping

We included 917 SNPs available in the BCAC iCOGS data set [23], residing within or in a 50kb flanking region of 75 candidate genes involved in the activation of the NF- κ B pathway identified from KEGG hsa04064 (www.genome.jp/kegg/) (Supplementary Table 8). These 75 candidate genes included ligands and receptors (e.g. TNF, TLR1-4, and TNFRSF10A and B), membrane molecules (e.g. IRAK2), Kinases (e.g. IKBKB), I-kappa-B cascade (e.g. IKBKG, IRAK1 and TLR8), cytoplasmic sequestering/releasing of NF- κ B (e.g. NF- κ BIs and TNFSFs), transcription factors (e.g. NF- κ B1 and RELs); but not the T-cell specific elements nor the downstream targets of NF- κ B [24]. All cases were genotyped as previously described using a custom-built Illumina iSelect array [23]. The genotypes were called using Illumina's proprietary GenCall algorithm. Details of the quality control of the genotype data were described previously [23].

Statistical analysis

We performed the statistical analyses using R environment for statistical computing version 2.15.2 (<http://www.r-project.org/>). *P*-values for association of the SNPs with tumor characteristics were calculated using Pearson's chi-squared tests. Power analyses for the survival study were performed using the powerSurvEpi package in R. We excluded SNPs with a minor allele frequency (MAF) <1%. The 10-year overall survival was calculated from the time of diagnosis to the date of death due to breast cancer or other reasons (median follow up time 5.6 years), or to the date of the last follow up. To allow for the inclusion of prevalent cases, time at risk was left censored using date of study entry. Survival analyses included Log-rank tests for assessing the statistical significance of differences between Kaplan-Meier curves for survival, and Cox' regression models for estimating the hazard ratios (HR)s. All Cox' models were adjusted for study. All *p* values reported are from two-sided tests. We performed two-way SNP interaction analysis on a total number of 917 SNPs for recessive (AA = 0, Aa = 0, aa = 1) and dominant (AA = 0, Aa = 1, aa = 1) models of inheritance. To determine the association of SNP-SNP interaction with patients' survival we used the likelihood ratio test to compare multivariate Cox' regression models of pairs of SNPs without and with an interaction term (SNP1+SNP2 vs. SNP1+SNP2+(SNP1*SNP2)). For each pair of SNPs the best model was selected based on the likelihood ratio test *p* value. To adjust for multiple testing error we applied the Benjamini-Hochberg post hoc method, which is also known to be robust against moderate dependency between SNPs, for example linkage disequilibrium [42, 43]. For the interaction pairs to be

considered significant, we set two stepwise thresholds. Firstly, the interactive pairs with p value < 0.01 after correction were selected. Secondly, for the selected set of interaction pairs to be considered significant, we applied a threshold for the HR based on the power analysis for each model. With a sample size of 30,431 with 3375 events and the average MAF of 23.4%, in the dominant and recessive models we had 80% power to detect interaction terms with $HR \geq 1.4$ (or $1/1.4 = 0.6$) and HR of ≥ 6.2 (or $1/6.2 = 0.16$), respectively. In addition, for the SNP pairs with significant interaction survival effects, subgroup analyses were performed to investigate whether the survival effect was differentially affected by tumor/patients characteristics and/or treatment. However, the analyses were limited to the subgroups with 5 or more death events (i.e. by ER status, lymph node status, and chemotherapy treatment).

Expression quantitative trait loci (eQTL)

In order to analyze the correlation between the loci of interest and the gene expression we utilized the data from The Cancer Genome Atlas (TCGA) and METABRIC project [44, 45]. From TCGA data set, we retrieved both peripheral blood DNA SNP genotype data, and expression data for 913 primary breast tumors. Additionally, of 913 TCGA cases, we also retrieved expression data from 85 healthy breast tissues. The TCGA expression data is from level 4 RNA-Seq (upper quartile normalized RSEM expression estimates). The TCGA matched peripheral blood DNA SNP genotype data is from level 2 Birdseed files (genotyped on Affymetrix Genome-Wide Human SNP Array 6.0 array and processed using Birdseed). The METABRIC raw genotype data (Affymetrix SNP 6.0 platform) was downloaded from European Genome-phenome Archive (cancergenome.nih.gov). The raw genotype data was processed with Affymetrix Genotyping Console Software following the best practices of Affymetrix SNP 6.0 analysis workflow provided by the program provider. The workflow included a quality control step with Contrast QC, a metric that captures the ability of an experiment to resolve SNP signals into three genotype clusters, applying the sample quality threshold of < 0.4 (the Contrast QC is typically greater than 0.4) and genotype calling using Birdseed v2 including the genotypes with call rate of $\geq 95\%$. After the QC process 1328 samples with both genotype and expression data from tumorous breast tissue remained in the analysis. The normalization of mRNA expression data (Illumina HT-12 v3 platform) was performed by quantile normalization utilizing single target distribution, described in detail elsewhere [44]. The cis- eQTL analysis was conducted with R-package Matrix eQTL [46] using linear regression and ANOVA models.

Functional annotation of variants

Linkage disequilibrium and the haplotype blocks in the SNP regions were examined based on r^2 using SNAP [47]. To annotate the sequences surrounding our SNPs of interest for regulatory elements we searched ENCODE (Encyclopedia Of DNA Elements) data using Haploreg v2 [48] and RegulomeDB [49]. ENCODE project has conducted high throughput functional assays such as Formaldehyde-Assisted Isolation of Regulatory Elements (FAIRE), Chromatin immunoprecipitation (ChIP), and DNaseI hypersensitivity (HS) to evaluate non-coding functional sequences and regulatory elements such as promoters, enhancers and silencers [50].

ACKNOWLEDGMENTS

We thank all the individuals who took part in these studies and all the researchers, clinicians, technicians and administrative staff who have enabled this work to be carried out. This study would not have been possible without the contributions of the following: Liisa Pelttari, Kirsimari Aaltonen, Karl von Smitten, Tuomas Heikkinen, Irja Erkkilä (HEBCS); Peter Bugert, Medical Faculty Mannheim (BSUCH); Dorthe Uldall Andersen, Maria Birna Arnadottir, Anne Bank, Dorthe Kjeldgård Hansen (CGPS); Hartwig Ziegler, Sonja Wolf, Volker Hermann (ESTHER); Eija Myöhänen, Helena Kemiläinen (KBCP); Heather Thorne, Eveline Niedermayr, all the kConFab research nurses and staff, the heads and staff of the Family Cancer Clinics, and the Clinical Follow Up Study (which has received funding from the NHMRC, the National Breast Cancer Foundation, Cancer Australia, and the National Institute of Health (USA)) for their contributions to this resource, and the many families who contribute to kConFab (KConFab/AOCS); Gilian Peuteman, Dominiek Smeets, Thomas Van Brussel and Kathleen Corthouts (LMBC); Dieter Flesch-Janys, Petra Seibold, Judith Heinz, Nadia Obi, Alina Vrieling, Sabine Behrens, Ursula Eilber, Muhabbet Celik, Til Olchers and Stefan Nickels (MARIE); Meeri Otsukka, Kari Mononen (OBCS); Teresa Selander, Nayana Weerasooriya, Julia Knight, Gord Glendon (OFBCR); E. Krol-Warmerdam, and J. Blom for patient accrual, administering questionnaires, and managing clinical information; the LUMC survival data were retrieved from the Leiden hospital-based cancer registry system (ONCDOC) with the help of Dr. J. Molenaar (ORIGO); Louise Brinton, Mark Sherman, Neonila Szeszenia-Dabrowska, Beata Peplonska, Witold Zatonski, Pei Chao, Michael Stagner (PBCS); The Swedish Medical Research Counsel (Pkarma and SASBAC); Petra Bos, Jannet Blom, Ellen Crepin, Elisabeth Huijskens, Annette Heemskerk, the Erasmus MC Cancer Institute (RBCS); Sue Higham, Helen Cramp, Ian Brock, Malcolm W.R. Reed, Sabapathy Balasubramanian and Dan Connley

(SBCS); and the SEARCH and EPIC teams (SEARCH); Andrew Lee, and Ed Dicks, Craig Luccarini and the staff of the Centre for Genetic Epidemiology Laboratory, Javier Benitez, Anna Gonzalez-Neira, the staff of the CNIO genotyping unit, Daniel C., Tessier, Francois Bacot, Daniel Vincent, Sylvie LaBoissière and Frederic Robidoux and the staff of the McGill University and Génome Québec Innovation Centre, Sune F. Nielsen, Borge G. Nordestgaard, and the staff of the Copenhagen DNA laboratory, and Julie M. Cunningham, Sharon A. Windebank, Christopher A. Hilker, Jeffrey Meyer and the staff of Mayo Clinic Genotyping Core Facility.

CONFLICT OF INTERESTS STATEMENT

The authors report that no conflict of interest exists.

FUNDING

The funders had no role in study design, data collection and analysis, decision to publish, or preparation of the manuscript.

- BCAC is funded by Cancer Research UK [C1287/A10118, C1287/A12014] and by the European Community's Seventh Framework Programme under grant agreement number 223175 (grant number HEALTH-F2-2009-223175) (COGS).

- Funding for the iCOGS infrastructure came from: the European Community's Seventh Framework Programme under grant agreement n° 223175 (HEALTH-F2-2009-223175) (COGS), Cancer Research UK (C1287/A10118, C1287/A 10710, C12292/A11174, C1281/A12014, C5047/A8384, C5047/A15007, C5047/A10692, C8197/A16565), the National Institutes of Health (CA128978) and Post-Cancer GWAS initiative (1U19 CA148537, 1U19 CA148065 and 1U19 CA148112 - the GAME-ON initiative), the Department of Defence (W81XWH-10-1-0341), the Canadian Institutes of Health Research (CIHR) for the CIHR Team in Familial Risks of Breast Cancer, Komen Foundation for the Cure, the Breast Cancer Research Foundation, and the Ovarian Cancer Research Fund.

- The HEBCS was financially supported by the Helsinki University Central Hospital Research Fund, Academy of Finland (266528), the Finnish Cancer Society, The Nordic Cancer Union and the Sigrid Juselius Foundation.

- The Australian Breast Cancer Family Study (ABCFS) was supported by grant UM1 CA164920 from the National Cancer Institute (USA). The content of this manuscript does not necessarily reflect the views or policies of the National Cancer Institute or any of the collaborating centers in the Breast Cancer Family Registry (BCFR), nor does mention of trade names, commercial products, or organizations imply endorsement by the USA Government or the BCFR. The ABCFS was also supported

by the National Health and Medical Research Council of Australia, the New South Wales Cancer Council, the Victorian Health Promotion Foundation (Australia) and the Victorian Breast Cancer Research Consortium. J.L.H. is a National Health and Medical Research Council (NHMRC) Australia Fellow and a Victorian Breast Cancer Research Consortium Group Leader. M.C.S. is a NHMRC Senior Research Fellow and a Victorian Breast Cancer Research Consortium Group Leader.

- The ABCS study was supported by the Dutch Cancer Society, grants NKI 2007-3839 and 2009-4363.

- The work of the BBCC was partly funded by ELAN-Fond of the University Hospital of Erlangen.

- The BSUCH study was supported by the Dietmar-Hopp Foundation, the Helmholtz Society and the German Cancer Research Center (DKFZ)

- The CGPS was supported by the Chief Physician Johan Boserup and Lise Boserup Fund, the Danish Medical Research Council and Herlev Hospital.

- The ESTHER study was supported by a grant from the Baden Württemberg Ministry of Science, Research and Arts. Additional cases were recruited in the context of the VERDI study, which was supported by a grant from the German Cancer Aid (Deutsche Krebshilfe).

- Financial support for KARBAC was provided through the regional agreement on medical training and clinical research (ALF) between Stockholm County Council and Karolinska Institute, the Swedish Cancer Society, The Gustav V Jubilee foundation and Bert von Kantzows foundation.

- The KBCP was financially supported by the special Government Funding (EVO) of Kuopio University Hospital grants, Cancer Fund of North Savo, the Finnish Cancer Organizations, and by the strategic funding of the University of Eastern Finland.

- kConFab is supported by a grant from the National Breast Cancer Foundation, and previously by the National Health and Medical Research Council (NHMRC), the Queensland Cancer Fund, the Cancer Councils of New South Wales, Victoria, Tasmania and South Australia, and the Cancer Foundation of Western Australia.

- LMBC is supported by the 'Stichting tegen Kanker' (232-2008 and 196-2010). Diether Lambrechts is supported by the FWO and the KULPFV/10/016-SymBioSysII.

- The MARIE study was supported by the Deutsche Krebshilfe e.V. [70-2892-BR I, 106332, 108253, 108419], the Hamburg Cancer Society, the German Cancer Research Center and the Federal Ministry of Education and Research (BMBF) Germany [01KH0402].

- The MCBCS was supported by the NIH grants CA128978, CA116167, CA176785 an NIH Specialized Program of Research Excellence (SPORE) in Breast Cancer [CA116201], and the Breast Cancer Research Foundation and a generous gift from the David F. and Margaret T. Grohne Family Foundation and the Ting

Tsung and Wei Fong Chao Foundation.

- MCCS cohort recruitment was funded by VicHealth and Cancer Council Victoria. The MCCS was further supported by Australian NHMRC grants 209057, 251553 and 504711 and by infrastructure provided by Cancer Council Victoria. Cases and their vital status were ascertained through the Victorian Cancer Registry (VCR) and the Australian Institute of Health and Welfare (AIHW), including the National Death Index.

- The MEC was supported by NIH grants CA63464, CA54281, CA098758 and CA132839.

- The OBCS was supported by research grants from the Finnish Cancer Foundation, the Academy of Finland (grant number 250083, 122715 and Center of Excellence grant number 251314), the Finnish Cancer Foundation, the Sigrid Juselius Foundation, the University of Oulu, the University of Oulu Support Foundation and the special Governmental EVO funds for Oulu University Hospital-based research activities.

- The Ontario Familial Breast Cancer Registry (OFBCR) was supported by grant UM1 CA164920 from the National Cancer Institute (USA). The content of this manuscript does not necessarily reflect the views or policies of the National Cancer Institute or any of the collaborating centers in the Breast Cancer Family Registry (BCFR), nor does mention of trade names, commercial products, or organizations imply endorsement by the USA Government or the BCFR.

- The ORIGO study was supported by the Dutch Cancer Society (RUL 1997-1505) and the Biobanking and Biomolecular Resources Research Infrastructure (BBMRI-NL CP16)

- The PBCS was funded by Intramural Research Funds of the National Cancer Institute, Department of Health and Human Services, USA.

- The pKARMA study was supported by Märit and Hans Rausings Initiative Against Breast Cancer

- The RBCS was funded by the Dutch Cancer Society (DDHK 2004-3124, DDHK 2009-4318).

- The SASBAC study was supported by funding from the Agency for Science, Technology and Research of Singapore (A*STAR), the US National Institute of Health (NIH) and the Susan G. Komen Breast Cancer Foundation.

- The SBCS was supported by Yorkshire Cancer Research S295, S299, S305PA and Sheffield Experimental Cancer Medicine Centre.

- SEARCH is funded by a programme grant from Cancer Research UK [C490/A10124; C490/A16561] and supported by the UK National Institute for Health Research Biomedical Research Centre at the University of Cambridge.

REFERENCES

1. Sovak MA, Bellas RE, Kim DW, Zanieski GJ, Rogers AE, Traish AM, et al. Aberrant nuclear factor-kappaB/Rel

expression and the pathogenesis of breast cancer. *J Clin Invest* 1997;100:2952-2960.

2. Cogswell PC, Guttridge DC, Funkhouser WK, Baldwin AS, Jr. Selective activation of NF-kappa B subunits in human breast cancer: potential roles for NF-kappa B2/p52 and for Bcl-3. *Oncogene* 2000;19:1123-1131.

3. Baud V, Karin M. Is NF-kappaB a good target for cancer therapy? Hopes and pitfalls. *Nat Rev Drug Discov* 200;8:33-40.

4. Tapia MA, Gonzalez-Navarrete I, Dalmases A, Bosch M, Rodriguez-Fanjul V, Rolfe M, et al. Inhibition of the canonical IKK/NF kappa B pathway sensitizes human cancer cells to doxorubicin. *Cell Cycle* 2007;6:2284-2292.

5. Montagut C, Tusquets I, Ferrer B, Corominas JM, Bellosillo B, Campas C, et al. Activation of nuclear factor-kappa B is linked to resistance to neoadjuvant chemotherapy in breast cancer patients. *Endocr Relat Cancer* 2006;13:607-616.

6. Karin M, Cao Y, Greten FR, Li ZW. NF-kappaB in cancer: from innocent bystander to major culprit. *Nat Rev Cancer* 2002;2:301-310.

7. Kim S, Hagemann A, DeMichele A. Immuno-modulatory gene polymorphisms and outcome in breast and ovarian cancer. *Immunol Invest* 2009;38:324-340.

8. Murray JL, Thompson P, Yoo SY, Do KA, Pande M, Zhou R, et al. Prognostic value of single nucleotide polymorphisms of candidate genes associated with inflammation in early stage breast cancer. *Breast Cancer Res Treat* 2013;138:917-924.

9. Ahn KS, Sethi G, Jain AK, Jaiswal AK, Aggarwal BB. Genetic deletion of NAD(P)H:quinone oxidoreductase 1 abrogates activation of nuclear factor-kappaB, IkkappaBalpha kinase, c-Jun N-terminal kinase, Akt, p38, and p44/42 mitogen-activated protein kinases and potentiates apoptosis. *J Biol Chem* 2006;281:19798-19808.

10. Fagerholm R, Hofstetter B, Tommiska J, Aaltonen K, Vrtel R, Syrjakoski K, et al. NAD(P)H:quinone oxidoreductase 1 NQO1*2 genotype (P187S) is a strong prognostic and predictive factor in breast cancer. *Nat Genet* 2008;40:844-853.

11. Jamshidi M, Bartkova J, Greco D, Tommiska J, Fagerholm R, Aittomaki K, et al. NQO1 expression correlates inversely with NFkappaB activation in human breast cancer. *Breast Cancer Res Treat* 2012;132:955-968.

12. Fagerholm R, Sprott K, Heikkinen T, Bartkova J, Heikkila P, Aittomaki K, et al. Overabundant FANCD2, alone and combined with NQO1, is a sensitive marker of adverse prognosis in breast cancer. *Ann Oncol* 2013;24:2780-2785.

13. Li J, Lindstrom LS, Foo JN, Rafiq S, Schmidt MK, Pharoah PD, et al. 2q36.3 is Associated with Prognosis for Oestrogen Receptor-Negative Breast Cancer Patients Treated with Chemotherapy. *Nat Commun* 2014;5:4051.

14. Hayden MS, Ghosh S. Shared principles in NF-kappaB signaling. *Cell* 2008;132:344-362.

15. Hayden MS, Ghosh S. NF-kappaB in immunobiology. *Cell*

Res 2011;21:223-244.

16. Oeckinghaus A, Hayden MS, Ghosh S. Crosstalk in NF-kappaB signaling pathways. *Nat Immunol* 2011;12:695-708.
17. Zubair A, Frieri M. Role of nuclear factor-kB in breast and colorectal cancer. *Curr Allergy Asthma Rep* 2013;13:44-49.
18. Hacker H, Karin M. Regulation and function of IKK and IKK-related kinases. *Sci STKE* 2006;2006:re13.
19. Scheidereit C. IkappaB kinase complexes: gateways to NF-kappaB activation and transcription. *Oncogene* 2006;25:6685-6705.
20. Mak TW, Yeh WC. Signaling for survival and apoptosis in the immune system. *Arthritis Res* 2002;4 Suppl 3:S243-52.
21. Wang X, Fu AQ, Mc Nerney ME, White KP. Widespread genetic epistasis among cancer genes. *Nat Commun* 2014;5:4828.
22. Lettre G, Lange C, Hirschhorn JN. Genetic model testing and statistical power in population-based association studies of quantitative traits. *Genet Epidemiol* 2007;31:358-362.
23. Michailidou K, Hall P, Gonzalez-Neira A, Ghoussaini M, Dennis J, Milne RL, et al. Large-scale genotyping identifies 41 new loci associated with breast cancer risk. *Nat Genet* 2013;45:353-61, 361e1-2.
24. Kanehisa M, Goto S, Sato Y, Kawashima M, Furumichi M, Tanabe M. Data, information, knowledge and principle: back to metabolism in KEGG. *Nucleic Acids Res* 2014;42(Database issue):D199-205.
25. Grimsby S, Jaensson H, Dubrovska A, Lomnytska M, Hellman U, Souchelnytskyi S. Proteomics-based identification of proteins interacting with Smad3: SREBP-2 forms a complex with Smad3 and inhibits its transcriptional activity. *FEBS Lett* 2004;577:93-100.
26. Brandl M, Seidler B, Haller F, Adamski J, Schmid RM, Saur D, et al. IKK(alpha) controls canonical TGF(ss)-SMAD signaling to regulate genes expressing SNAIL and SLUG during EMT in panc1 cells. *J Cell Sci* 2010;123:4231-4239.
27. Bitzer M, von Gersdorff G, Liang D, Dominguez-Rosales A, Beg AA, Rojkind M, et al. A mechanism of suppression of TGF-beta/SMAD signaling by NF-kappa B/RelA. *Genes Dev* 2000;14:187-197.
28. Varley KE, Gertz J, Roberts BS, Davis NS, Bowling KM, Kirby MK, et al. Recurrent read-through fusion transcripts in breast cancer. *Breast Cancer Res Treat* 2014;146:287-297.
29. Claudio E, Brown K, Park S, Wang H, Siebenlist U. BAFF-induced NEMO-independent processing of NF-kappa B2 in maturing B cells. *Nat Immunol* 2002;3:958-965.
30. Morrison MD, Reiley W, Zhang M, Sun SC. An atypical tumor necrosis factor (TNF) receptor-associated factor-binding motif of B cell-activating factor belonging to the TNF family (BAFF) receptor mediates induction of the noncanonical NF-kappaB signaling pathway. *J Biol Chem* 2005;280:10018-10024.
31. Almaden JV, Tsui R, Liu YC, Birnbaum H, Shokhirev MN, Ngo KA, et al. A pathway switch directs BAFF signaling to distinct NFkappaB transcription factors in maturing and proliferating B cells. *Cell Rep* 2014;9:2098-2111.
32. Sun SC. Non-canonical NF-kappaB signaling pathway. *Cell Res* 2011;21:71-85.
33. Keats JJ, Fonseca R, Chesi M, Schop R, Baker A, Chng WJ, et al. Promiscuous mutations activate the noncanonical NF-kappaB pathway in multiple myeloma. *Cancer Cell* 2007;12:131-144.
34. Wolf MJ, Seleznik GM, Zeller N, Heikenwalder M. The unexpected role of lymphotoxin beta receptor signaling in carcinogenesis: from lymphoid tissue formation to liver and prostate cancer development. *Oncogene* 2010;29:5006-5018.
35. Villanueva A, Savic R, Llovet JM. Lymphotoxins: new targets for hepatocellular carcinoma. *Cancer Cell* 2009;16:272-273.
36. Chen G, Goeddel DV. TNF-R1 signaling: a beautiful pathway. *Science* 2002;296:1634-1635.
37. Rickert RC, Jellusova J, Miletic AV. Signaling by the tumor necrosis factor receptor superfamily in B-cell biology and disease. *Immunol Rev* 2011;244:115-133.
38. Schneider-Brachert W, Heigl U, Ehrenschrwender M. Membrane trafficking of death receptors: implications on signalling. *Int J Mol Sci* 2013;14:14475-14503.
39. Fujioka S, Niu J, Schmidt C, Sclabas GM, Peng B, Uwagawa T, et al. NF-kappaB and AP-1 connection: mechanism of NF-kappaB-dependent regulation of AP-1 activity. *Mol Cell Biol* 2004;24:7806-7819.
40. Christley RM. Power and Error: Increased Risk of False Positive Results in Underpowered Studies. 2010, 3: 16-19 2010:16.
41. Fasching PA, Pharoah PD, Cox A, Nevanlinna H, Bojesen SE, Karn T, et al. The role of genetic breast cancer susceptibility variants as prognostic factors. *Hum Mol Genet* 2012;21:3926-3939.
42. Benjamini Y, Hochberg Y. Controlling the false discovery rate: a practical and powerful approach to multiple testing. *J Royal Stat Soc* 1995;57:289-300.
43. Sarkar SK. Some Results on False Discovery Rate in Stepwise multiple testing procedures. *The Annals of Statistics* 2002;30:239.
44. Curtis C, Shah SP, Chin SF, Turashvili G, Rueda OM, Dunning MJ, et al. The genomic and transcriptomic architecture of 2,000 breast tumours reveals novel subgroups. *Nature* 2012;486:346-352.
45. Dvinge H, Git A, Graf S, Salmon-Divon M, Curtis C, Sottoriva A, et al. The shaping and functional consequences of the microRNA landscape in breast cancer. *Nature* 2013;497:378-382.
46. Shabalin AA. Matrix eQTL: ultra fast eQTL analysis via large matrix operations. *Bioinformatics* 2012 15;28:1353-1358.
47. Johnson AD, Handsaker RE, Pulit SL, Nizzari MM,

O'Donnell CJ, de Bakker PI. SNAP: a web-based tool for identification and annotation of proxy SNPs using HapMap. *Bioinformatics* 2008;24:2938-2939.

48. Ward LD, Kellis M. HaploReg: a resource for exploring chromatin states, conservation, and regulatory motif alterations within sets of genetically linked variants. *Nucleic Acids Res* 2012;40(Database issue):D930-4.
49. Boyle AP, Hong EL, Hariharan M, Cheng Y, Schaub MA, Kasowski M, et al. Annotation of functional variation in personal genomes using RegulomeDB. *Genome Res* 2012;22:1790-1797.
50. ENCODE Project Consortium. An integrated encyclopedia of DNA elements in the human genome. *Nature* 2012;489:57-74.