



Minerva Access is the Institutional Repository of The University of Melbourne

**Author/s:**

Lu, Q;Narsilio, GA;Aditya, GR;Johnston, IW

**Title:**

Cost and performance data for residential buildings fitted with GSHP systems in Melbourne Australia

**Date:**

2017-06-01

**Citation:**

Lu, Q., Narsilio, G. A., Aditya, G. R. & Johnston, I. W. (2017). Cost and performance data for residential buildings fitted with GSHP systems in Melbourne Australia. *Data in Brief*, 12, pp.9-12. <https://doi.org/10.1016/j.dib.2017.03.028>.

**Persistent Link:**

<https://hdl.handle.net/11343/258377>

**License:**

[CC BY](#)



ELSEVIER

Contents lists available at ScienceDirect

## Data in Brief

journal homepage: [www.elsevier.com/locate/dib](http://www.elsevier.com/locate/dib)

## Data Article

# Cost and performance data for residential buildings fitted with GSHP systems in Melbourne Australia



Qi Lu, Guillermo A. Narsilio\*, Gregorius Riyan Aditya, Ian W. Johnston

Department of Infrastructure Engineering, The University of Melbourne, Australia

## ARTICLE INFO

## Article history:

Received 17 February 2017

Received in revised form

8 March 2017

Accepted 10 March 2017

Available online 18 March 2017

## ABSTRACT

The data reported in this article presents actual installation costs and performance data for a selection of residential Ground Source Heat Pump (GSHP) systems in Melbourne, Australia. The installation cost data includes five main cost components: ground loop installation, head pipe installation, heat pump, mechanical room installation, and fittings. The performance data presented here includes timestamp, air temperature and thermal loading. A more comprehensive analysis of this data may be obtained from the article entitled "Economic analysis of vertical ground source heat pump systems in Melbourne" (Q. Lu, G.A. Narsilio, G.R. Aditya, I.W. Johnston, 2017) [1].

© 2017 The Authors. Published by Elsevier Inc. This is an open access article under the CC BY license (<http://creativecommons.org/licenses/by/4.0/>).

## Specifications Table

Subject area	Civil engineering
More specific subject area	Shallow geothermal; ground source heat pump system
Type of data	Table
How data was acquired	Flow meter: MT-KD-P multi-jet water meter by Bar Meters

DOI of original article: <http://dx.doi.org/10.1016/j.energy.2017.02.082>

\* Corresponding author.

E-mail address: [narsilio@unimelb.edu.au](mailto:narsilio@unimelb.edu.au) (G.A. Narsilio).

<http://dx.doi.org/10.1016/j.dib.2017.03.028>

2352-3409/© 2017 The Authors. Published by Elsevier Inc. This is an open access article under the CC BY license (<http://creativecommons.org/licenses/by/4.0/>).

	Temperature sensor: NTC-NG6K by Dixell
	Current transformer: CT132 by Hobut
	Power meter: Ipro Genius IPG100D by Dixell Emerson
	Data logger: XWeb 500D by Dixell Emerson
Data format	Analyzed
Experimental factors	No pretreatment of samples was performed
Experimental features	Cost data gathered during the installation
	Performance data gathered during the operation of the heat pumps
Data source location	Melbourne, Australia
Data accessibility	Data is with this article

### Value of the data

- The detailed thermal loading data provided for three residential buildings in Melbourne would give designers a better understanding of household's energy demand.
- The relationship between the thermal loading and the ambient air temperature would be extrapolated and examined using the dataset. Such relationship would then be used to compare with the Bin Method, which is commonly used to design the residential thermal loading.
- The building balance point temperature under Melbourne conditions would be better understood, and of use for other similar temperate climate locations and construction envelopes around the world.
- The detailed cost breakdown of a GSHP system were presented, which would enable a cost analysis and comparisons with other conventional heating/cooling systems.

## 1. Data

The data in this data article has been gathered under a 'Direct geothermal energy research and demonstration project' run under the Sustainable Energy Pilot Demonstration (SEPD) program funded by the state government of Victoria, Australia. Under this project, around 20 buildings were selected for the installation of vertical GSHP systems as less expensive horizontal systems were not an option due to land space limitations. Most of these buildings are typical residential properties of 130–160 m<sup>2</sup>

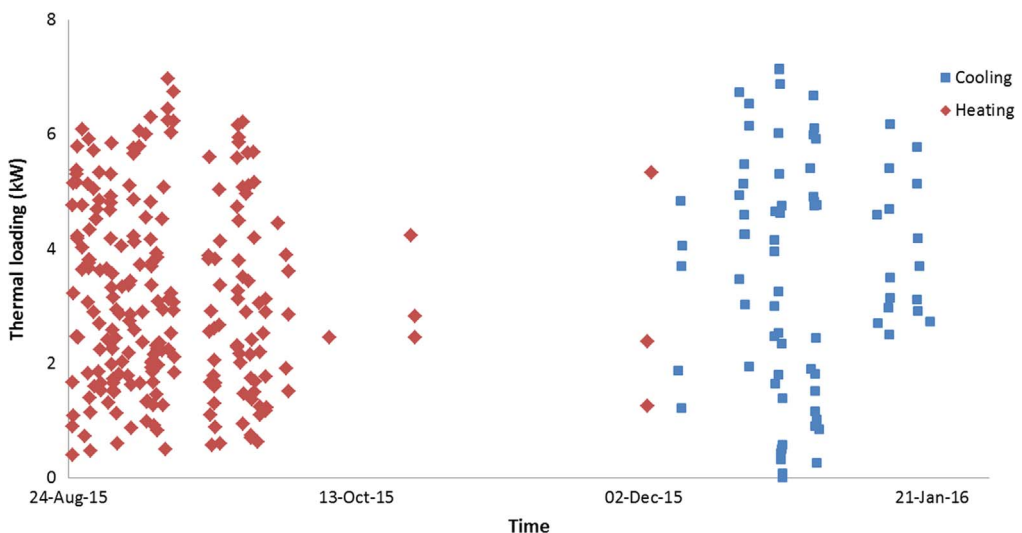


Fig. 1. Hourly thermal loading of property 1.

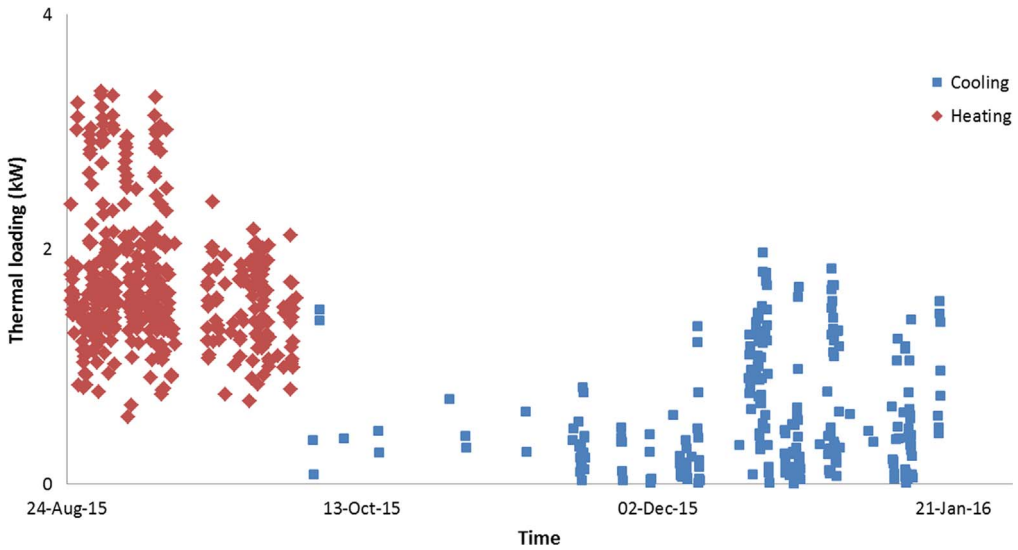


Fig. 2. Hourly thermal loading of property 2.

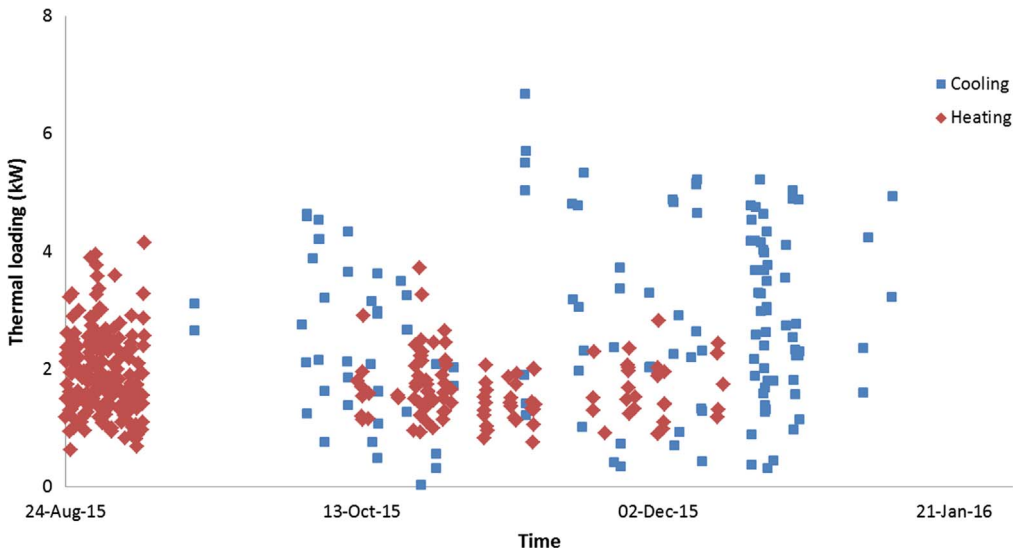


Fig. 3. Hourly thermal loading of property 3.

with 2–3 bedrooms, and their thermal energy consumptions were monitored and recorded using various instruments as described in the table above. Figs. 1–3 illustrate the hourly thermal loading of three monitored residential properties. Table 1 shows the capital cost of the installed Ground Heat Exchanger (GHE).

## 2. Experimental design, materials and methods

The data logger installed in each property under the SEPD program records a range of parameters in a time interval of five minutes, including electricity consumption of the heat pump, flow rate of

**Table 1**  
Ground loop installation cost (in Australian dollars).

Drilling depth	Total (per m)	Drilling alone (per m)	Grouting (per m)	Geoloop (per m)	Labor (per m)
2 × 60 m double loop GHE	\$131.22	\$71.50	\$15.95	\$14.63	\$29.14
2 × 60 m double loop GHE	\$136.31	\$55.00	\$22.00	\$19.44	\$39.87
2 × 65 m double loop vertical GHE	\$96.77	\$55.00	\$22.00	\$ <sup>-a</sup>	\$19.77
2 × 50 m double loop vertical GHE	\$104.80	\$55.00	\$22.00	\$ <sup>-a</sup>	\$27.80
2 × 55 m single loop GHE	\$124.38	\$66.00	\$20.08	\$15.60	\$22.70
2 × 55 m single loop GHE	\$129.89	\$55.00	\$22.00	\$21.20	\$31.69
2 × 60 m double loop GHE	\$115.23	\$60.50	\$20.21	\$ <sup>-a</sup>	\$34.51
2 × 60 m double loop GHE	\$118.25	\$55.00	\$22.00	\$ <sup>-a</sup>	\$41.25
2 × 60 m double loop GHE	\$131.23	\$71.50	\$16.83	\$ <sup>-a</sup>	\$42.90

<sup>a</sup> When the Geoloop component has zero cost, it means that the total cost (per m) does not include Geoloop.

circulating fluid through the ground heat exchanger, ambient air temperature, entering water temperature from the ground to the heat pump, and leaving water temperature from the heat pump to the ground.

The collected installation cost data was categorized into five main components. The ground loop installation includes drilling of boreholes, grouting, purchasing and installing geothermal loop. The head pipe installation includes digging trenches, connecting geothermal loops to head pipes and installation of head pipes. The mechanical room installation includes the installation of the circulation pump, expansion tank and the connection of the header pipes to the heat pump unit. The fittings cost includes the purchase and installation of all connectors and fittings. More details can be found in [1].

## Acknowledgments

The authors would like to acknowledge the support provided to this project by the Sustainable Energy Pilot Demonstration (SEPD) Program funded by the Department of Economic Development, Jobs, Transport and Resources of the Government of Victoria, the owners of the monitored GSHP systems, the Melbourne Energy Institute, and the Australian Research Council (FT140100227).

## Transparency document. Supplementary material

Transparency data associated with this article can be found in the online version at <http://dx.doi.org/10.1016/j.dib.2017.03.028>.

## Appendix A. Supplementary material

Supplementary data associated with this article can be found in the online version at <http://dx.doi.org/10.1016/j.dib.2017.03.028>.

## Reference

- [1] Q. Lu, G.A. Narsilio, G.R. Aditya, I.W. Johnston, Economic analysis of vertical ground source heat pump systems in Melbourne, *Energy* 125 (2017) 107–117, <http://dx.doi.org/10.1016/j.energy.2017.02.082>.