



Minerva Access is the Institutional Repository of The University of Melbourne

Author/s:

Tam, CS;Allan, JN;Siddiqi, T;Kipps, TJ;Jacobs, R;Opat, S;Barr, PM;Tedeschi, A;Trentin, L;Bannerji, R;Jackson, S;Kuss, BJ;Moreno, C;Szafer-Glusman, E;Russell, K;Zhou, C;Ninomoto, J;Dean, JP;Wierda, WG;Ghia, P

Title:

Fixed-duration ibrutinib plus venetoclax for first-line treatment of CLL: primary analysis of the CAPTIVATE FD cohort

Date:

2022-06-02

Citation:

Tam, C. S., Allan, J. N., Siddiqi, T., Kipps, T. J., Jacobs, R., Opat, S., Barr, P. M., Tedeschi, A., Trentin, L., Bannerji, R., Jackson, S., Kuss, B. J., Moreno, C., Szafer-Glusman, E., Russell, K., Zhou, C., Ninomoto, J., Dean, J. P., Wierda, W. G. & Ghia, P. (2022). Fixed-duration ibrutinib plus venetoclax for first-line treatment of CLL: primary analysis of the CAPTIVATE FD cohort. *Blood*, 139 (22), pp.3278-3289. <https://doi.org/10.1182/blood.2021014488>.

Persistent Link:

<https://hdl.handle.net/11343/301630>

License:

[CC BY-NC-ND](#)



American Society of Hematology  
 2021 L Street NW, Suite 900,  
 Washington, DC 20036  
 Phone: 202-776-0544 | Fax 202-776-0545  
 editorial@hematology.org

## Fixed-duration ibrutinib plus venetoclax for first-line treatment of CLL: primary analysis of the CAPTIVATE FD cohort

Tracking no: BLD-2021-014488R2

Constantine Tam (Peter MacCallum Cancer Center & St. Vincent's Hospital and the University of Melbourne, Australia) John Allan (Weill Medical College of Cornell University, New York Presbyterian Hospital, United States) Tanya Siddiqi (City of Hope Medical Center, United States) Thomas Kipps (Moores Cancer Center, University of California, United States) Ryan Jacobs (Levine Cancer Institute, Atrium Health, United States) Stephen Opat (Monash Medical Centre, Australia) Paul Barr (Wilmot Cancer Institute, University of Rochester Medical Center, United States) Alessandra Tedeschi (ASST Grande Ospedale Metropolitano Niguarda, Niguarda Cancer Center, Italy) Livio Trentin (University of Padua, Italy) Rajat Bannerji (Rutgers Cancer Institute of New Jersey, United States) Sharon Jackson (Middlemore Hospital, New Zealand) Bryone Kuss (Flinders Medical Centre and Flinders University, Australia) Carol Moreno (Hospital de la Santa Creu i Sant Pau, Spain) Edith Szafer-Glusman (Pharmacyclics LLC, an AbbVie Company, United States) Kristin Russell (Pharmacyclics LLC, an AbbVie Company, United States) Cathy Zhou (Pharmacyclics LLC, an AbbVie Company, United States) Joi Ninomoto (Pharmacyclics LLC, an AbbVie Company, ) James Dean (Pharmacyclics LLC, an AbbVie Company, United States) William Wierda (University of Texas M.D. Anderson Cancer Center, United States) Paolo Ghia (Università Vita-Salute San Raffaele, Italy)

### Abstract:

CAPTIVATE (NCT02910583) is an international phase 2 study in patients aged  $\leq 70$  years with previously untreated chronic lymphocytic leukemia (CLL). Results from the cohort investigating fixed-duration treatment with ibrutinib plus venetoclax are reported. Patients received 3 cycles of ibrutinib lead-in then 12 cycles of ibrutinib plus venetoclax (oral ibrutinib [420 mg/day]; oral venetoclax [5-week ramp-up to 400 mg/day]). Primary endpoint was complete response (CR) rate. Hypothesis testing was performed for patients without del(17p) with prespecified analyses in all treated patients. Secondary endpoints included undetectable minimal residual disease (uMRD) rates, progression-free survival (PFS), overall survival (OS), and safety. 159 patients were enrolled and treated, including 136 patients without del(17p). Median time on study was 27.9 months and 92% of patients completed all planned treatment. Primary endpoint was met, with CR rate of 56% (95% CI, 48-64) in patients without del(17p), significantly higher than prespecified 37% minimum rate ( $P < .0001$ ). In the all-treated population, CR rate was 55% (95% CI, 48-63); best uMRD rates were 77% (peripheral blood) and 60% (bone marrow); 24-month PFS and OS rates were 95% and 98%, respectively. At baseline, 21% of patients were in the high tumor burden category for tumor lysis syndrome risk; after ibrutinib lead-in, only 1% remained in this category. Most common grade  $\geq 3$  adverse events were neutropenia (33%) and hypertension (6%). First-line ibrutinib plus venetoclax represents the first all-oral, once-daily, chemotherapy-free, fixed-duration regimen for patients with CLL. Fixed-duration ibrutinib plus venetoclax achieved deep, durable responses and promising PFS, including in patients with high-risk features.

**Conflict of interest:** COI declared - see note

**COI notes:** C.S.T. reports honoraria from Janssen, AbbVie, BeiGene, Janssen, and Loxo Oncology; and research funding from AbbVie, BeiGene, and Janssen. J.N.A. reports honoraria from AbbVie, AstraZeneca, and Janssen; a consulting/advisory role for AbbVie, ADC Therapeutics, Ascentage, AstraZeneca, BeiGene, Epizyme, Genentech, TG Therapeutics, and Pharmacyclics LLC, an AbbVie Company; research funding from AstraZeneca, Celgene, Genentech, Janssen, and TG Therapeutics; and speakers bureau for AbbVie, AstraZeneca, BeiGene, Janssen, and Pharmacyclics LLC, an AbbVie Company. T.S. reports a consulting/advisory role for AstraZeneca, BeiGene, Bristol Myers Squibb, Celgene, Juno Therapeutics, and Kite Pharma; research funding from AstraZeneca, Ascentage, BeiGene, Celgene, Juno Therapeutics, Kite Pharma, Oncternal, TG Therapeutics, and Pharmacyclics LLC, an AbbVie Company; and speakers bureau for AstraZeneca, BeiGene, Janssen, and Pharmacyclics LLC, an AbbVie Company. T.J.K. reports a consulting/advisory role for AbbVie, Celgene, Genentech-Roche, Gilead Sciences, and Pharmacyclics LLC, an AbbVie Company; research funding from AbbVie, Genentech-Roche, Oncternal Therapeutics, and Pharmacyclics LLC, an AbbVie Company. R.J. reports a consulting/advisory role for AbbVie, AstraZeneca, Verastem, and Pharmacyclics LLC, an AbbVie Company; research funding from MEI Pharma, TeneoBio, TG Therapeutics, and Pharmacyclics LLC, an AbbVie Company; and speakers bureau for AbbVie, AstraZeneca, BeiGene, Janssen, and Pharmacyclics LLC, an AbbVie Company. S.O. reports honoraria from and a consulting/advisory role for AbbVie, Antengene, AstraZeneca, CSL, Gilead, Janssen, Merck, Roche, and Takeda; and research funding from AbbVie, Antengene, AstraZeneca, BeiGene, CSL, Gilead, Janssen, Roche, Merck, Takeda, and Pharmacyclics LLC, an AbbVie Company. P.M.B. reports a consulting/advisory role for AbbVie, AstraZeneca, Bristol Myers Squibb, Celgene, Genentech, Gilead, Janssen, Merck, MEI Pharma, MorphoSys, Seagen, TG Therapeutics, and Pharmacyclics LLC, an AbbVie Company; and research funding from AstraZeneca and TG Therapeutics. A.T. reports a consulting/advisory role and speakers bureau for AbbVie, AstraZeneca, BeiGene, and Janssen; and research funding from Roche. L.T. reports honoraria from and a consulting/advisory role for AbbVie, Janssen, and Takeda; and research funding from and speakers bureau for Janssen. R.B. reports employment and stock or other ownership of an immediate family member with Sanofi-Pasteur; and research funding from AbbVie, Genentech-Roche, Merck, Regeneron, and Pharmacyclics LLC, an AbbVie Company. S.J. reports a consulting/advisory role and speakers bureau for AbbVie; research funding from AbbVie, GlaxoSmithKline, and Roche; and travel/accommodations/expenses from Roche. B.J.K. reports stock or other ownership with Commonwealth Serum Laboratories; honoraria from and a consulting/advisory role for AbbVie, Janssen, Kyowa Kirin, Merck, Mundipharma, Roche, and Takeda; speakers bureau for AbbVie, Janssen, and Roche; and expert testimony for AbbVie. C.M. reports a consulting/advisory role for AbbVie, AstraZeneca, BeiGene, and Janssen; and research funding from and speakers bureau for AbbVie and Janssen. E.S-G., K.R., C.Z., and J.P.D. report employment with Pharmacyclics LLC, an AbbVie Company; and stock or other ownership with AbbVie. J.N. reports employment with Summit Therapeutics and previous employment with Pharmacyclics LLC, an AbbVie Company; and stock or other ownership with AbbVie. W.G.W. reports research funding from AbbVie, Acerta/AstraZeneca, Cyclacel, Genentech, Gilead Sciences, GlaxoSmithKline/Novartis, Janssen, Juno Therapeutics, Kite Pharma, Loxo Oncology, Miragen, Oncternal Therapeutics, Sunesis, Xencor, and Pharmacyclics LLC, an AbbVie Company. P.G. reports honoraria from and a consulting/advisory role for AbbVie, Acerta/AstraZeneca, Adaptive, ArQule/MSD, BeiGene, Celgene/Juno/Bristol Myers Squibb, Gilead, Janssen, Lilly/Loxo, and Roche; and research Funding from AbbVie, AstraZeneca, Gilead, Janssen, Novartis, and Sunesis.

**Preprint server:** No;

**Author contributions and disclosures:** C.S.T., J.N., J.P.D., C.Z., W.G.W., and P.G. designed the study; C.S.T., J.N.A., T.S., T.J.K., S.O., P.M.B., A.T., L.T., R.B., S.J., B.J.K., C.M., W.G.W., and P.G. enrolled patients and collected the data; all authors had access to the data and were involved in the interpretation of data, contributed to manuscript review and revisions, and approved the final version for submission.

**Non-author contributions and disclosures:** Yes; Medical writing support was provided by Melanie Sweetlove, MSc, of ApotheCom, San Francisco, CA, and was funded by Pharmacyclics LLC, an AbbVie Company.

**Agreement to Share Publication-Related Data and Data Sharing Statement:** Requests for access to individual participant data from clinical studies conducted by Pharmacyclics LLC, an AbbVie Company, can be submitted through Yale Open Data Access (YODA) Project site at <http://yoda.yale.edu>

**Clinical trial registration information (if any):** ClinicalTrials.gov, NCT02910583

## Fixed-duration ibrutinib plus venetoclax for first-line treatment of CLL: primary analysis of the CAPTIVATE FD cohort

Constantine S. Tam,<sup>1</sup> John N. Allan,<sup>2</sup> Tanya Siddiqi,<sup>3</sup> Thomas J. Kipps,<sup>4</sup> Ryan Jacobs,<sup>5</sup> Stephen Opat,<sup>6</sup> Paul M. Barr,<sup>7</sup> Alessandra Tedeschi,<sup>8</sup> Livio Trentin,<sup>9</sup> Rajat Bannerji,<sup>10</sup> Sharon Jackson,<sup>11</sup> Bryone J. Kuss,<sup>12</sup> Carol Moreno,<sup>13</sup> Edith Szafer-Glusman,<sup>14</sup> Kristin Russell,<sup>14</sup> Cathy Zhou,<sup>14</sup> Joi Ninomoto,<sup>14</sup> James P. Dean,<sup>14</sup> William G. Wierda,<sup>15,\*</sup> and Paolo Ghia<sup>16,\*</sup>

\*WG Wierda and P Ghia contributed equally to the study and are co-senior authors.

<sup>1</sup>Peter MacCallum Cancer Center & St. Vincent's Hospital and the University of Melbourne, Melbourne, VIC, Australia; <sup>2</sup>Weill Cornell Medicine, New York, NY, USA; <sup>3</sup>City of Hope National Medical Center, Duarte, CA, USA; <sup>4</sup>UCSD Moores Cancer Center, San Diego, CA, USA; <sup>5</sup>Levine Cancer Institute, Charlotte, NC, USA; <sup>6</sup>Monash University, Clayton, VIC, Australia; <sup>7</sup>Wilmot Cancer Institute, University of Rochester Medical Center, Rochester, NY, USA; <sup>8</sup>ASST Grande Ospedale Metropolitano Niguarda, Milan, Italy; <sup>9</sup>University of Padova, Padova, Italy; <sup>10</sup>Rutgers Cancer Institute of New Jersey, New Brunswick, NJ, USA; <sup>11</sup>Middlemore Hospital, Auckland, New Zealand; <sup>12</sup>Flinders University and Medical Center, Bedford Park, SA, Australia; <sup>13</sup>Hospital de la Santa Creu i Sant Pau, Autonomous University of Barcelona, Barcelona, Spain; <sup>14</sup>Pharmacyclics LLC, an AbbVie Company, Sunnyvale, CA, USA; <sup>15</sup>Department of Leukemia, University of Texas MD Anderson Cancer Center, Houston, TX, USA; <sup>16</sup>Università Vita-Salute San Raffaele and IRCCS Ospedale San Raffaele, Milan, Italy

**Research support:** This study was supported by Pharmacyclics LLC, an AbbVie Company

### Correspondence to:

Constantine S. Tam, MBBS, MD  
Peter MacCallum Cancer Center

305 Grattan Street

Melbourne VIC 3000, Australia

Telephone: +61-39-656-1700

Fax: +61-03-8559-7379

Email: [Constantine.Tam@petermac.org](mailto:Constantine.Tam@petermac.org)

**Running head:** Fixed-duration ibrutinib + venetoclax for CLL

(45 of max 50 characters, including spaces)

**Prior presentation:** Presented in abstract form at the 2021 ASCO Annual Meeting – Virtual;

June 4–8, 2021

**Scientific category:** Clinical Trials and Observations

**Journal:** *Blood*

**Article type:** Regular Article

**Article title:** 117 (limit: 120 characters, including spaces)

**Word count:** 3680 (limit: 4000 words)

**Abstract:** 250 words (limit: 250)

**References:** 35 (limit: 100)

**Figures/Tables:** 5 figures; 2 tables (max: 7)

**Supplemental materials:** 7 figures/tables (no limit)

## Key Points

- Fixed-duration ibrutinib plus venetoclax achieved deep, durable responses, clinically meaningful PFS and treatment-free remissions.
- First-line ibrutinib plus venetoclax represents the first all-oral, once-daily, chemotherapy-free, fixed-duration regimen for CLL.

## Abstract

CAPTIVATE (NCT02910583) is an international phase 2 study in patients aged  $\leq 70$  years with previously untreated chronic lymphocytic leukemia (CLL). Results from the cohort investigating fixed-duration treatment with ibrutinib plus venetoclax are reported. Patients received 3 cycles of ibrutinib lead-in then 12 cycles of ibrutinib plus venetoclax (oral ibrutinib [420 mg/day]; oral venetoclax [5-week ramp-up to 400 mg/day]). Primary endpoint was complete response (CR) rate. Hypothesis testing was performed for patients without del(17p) with prespecified analyses in all treated patients. Secondary endpoints included undetectable minimal residual disease (uMRD) rates, progression-free survival (PFS), overall survival (OS), and safety. 159 patients were enrolled and treated, including 136 patients without del(17p). Median time on study was 27.9 months and 92% of patients completed all planned treatment. Primary endpoint was met, with CR rate of 56% (95% CI, 48-64) in patients without del(17p), significantly higher than prespecified 37% minimum rate ( $P < .0001$ ). In the all-treated population, CR rate was 55% (95% CI, 48-63); best uMRD rates were 77% (peripheral blood) and 60% (bone marrow); 24-month PFS and OS rates were 95% and 98%, respectively. At baseline, 21% of patients were in the high tumor burden category for tumor lysis syndrome risk; after ibrutinib lead-in, only 1% remained in this category. Most common grade  $\geq 3$  adverse events were neutropenia (33%) and hypertension (6%). First-line ibrutinib plus venetoclax represents the first all-oral, once-daily, chemotherapy-free, fixed-duration regimen for patients with CLL. Fixed-duration ibrutinib plus venetoclax achieved deep, durable responses and promising PFS, including in patients with high-risk features.



## INTRODUCTION

Ibrutinib, a once-daily oral Bruton's tyrosine kinase (BTK) inhibitor, is the only targeted therapy to demonstrate improved progression-free survival (PFS) in 4 randomized phase 3 studies<sup>1-4</sup> with improved overall survival (OS) in 2 of these studies<sup>1,2</sup> versus standard chemotherapy/chemoimmunotherapy regimens in previously untreated chronic lymphocytic leukemia (CLL)/small lymphocytic lymphoma (SLL). Venetoclax, an oral inhibitor of the antiapoptotic protein BCL-2, is approved for the treatment of CLL/SLL as a single agent or combined with rituximab or obinutuzumab.<sup>5</sup> Single-agent venetoclax produces deep responses with undetectable minimal residual disease (uMRD) status in bone marrow (BM) in 16% of treated patients with relapsed/refractory CLL.<sup>6-8</sup> While continuous ibrutinib is an established standard of care in CLL that affords survival benefit, there is increasing desire for convenient, all-oral, time-limited treatment options that can be delivered in the outpatient setting.

Ibrutinib and venetoclax, through distinct and complementary modes of action, preferentially target distinct cell compartments and CLL subpopulations to eliminate both dividing and resting CLL cells.<sup>9,10</sup> Ibrutinib mobilizes CLL cells out of lymph nodes and other lymphoid niches and into peripheral blood (PB), where they are more susceptible to venetoclax-induced apoptosis.<sup>9,11-14</sup> Inhibition of BTK by ibrutinib also enhances the dependence of CLL cells on BCL-2, and thereby increases sensitivity to venetoclax and accelerates apoptosis.<sup>9,13,15</sup> Combined ibrutinib plus venetoclax demonstrated synergistic antitumor activity in preclinical CLL models, with greater cytotoxicity observed with the combination than with either agent alone.<sup>9,12,15</sup> Additionally, recent clinical studies with ibrutinib plus venetoclax demonstrated high uMRD rates in both PB and BM in patients with CLL/SLL.<sup>16-22</sup>

CAPTIVATE is a multicenter phase 2 study investigating combined ibrutinib plus venetoclax in first-line treatment of CLL/SLL in 2 separate cohorts: MRD-guided randomized treatment discontinuation (MRD) and Fixed-Duration (FD). In the MRD cohort, uMRD was achieved in

75% of patients in PB and 68% in BM after 3 cycles of ibrutinib followed by 12 cycles of ibrutinib plus venetoclax, and 30-month PFS rates were consistently  $\geq 95\%$  across subsequent MRD-guided randomized treatments.<sup>17</sup> Here we report primary analysis results from the CAPTIVATE FD cohort evaluating fixed-duration ibrutinib plus venetoclax for the first-line treatment of CLL/SLL.

## **METHODS**

### **Study design and participants**

CAPTIVATE is a multicenter, international, phase 2 study. The FD cohort enrolled sequentially after the MRD cohort and is an open-label, single-arm cohort to evaluate depth of response with fixed-duration ibrutinib plus venetoclax. Eligible patients were aged  $\geq 18$  and  $\leq 70$  years with previously untreated CLL/SLL requiring treatment by International Workshop on Chronic Lymphocytic Leukemia (iwCLL) 2008 criteria<sup>23</sup> and had measurable nodal disease by computed tomography; Eastern Cooperative Oncology Group performance status of 0 to 2; and adequate hepatic, renal, and hematologic function. Patients with known allergy to xanthine oxidase inhibitors and/or rasburicase were excluded. The study was conducted in accordance with International Conference on Harmonisation guidelines for Good Clinical Practice and principles of the Declaration of Helsinki. The protocol was approved by institutional review boards or independent ethics committees of all participating institutions. All patients provided written informed consent. This study is registered with ClinicalTrials.gov (NCT02910583).

### **Treatment**

Patients in the FD cohort received all-oral fixed-duration treatment with 3 cycles of single-agent ibrutinib (420 mg once daily) followed by 12 cycles of combined ibrutinib plus venetoclax (target dose 400 mg once daily after standard 5-week ramp-up, with tumor lysis syndrome [TLS] prophylaxis and monitoring per US prescribing information).<sup>5</sup> Treatment was

administered in 28-day cycles. After completion of the fixed-duration regimen, patients who subsequently had confirmed progressive disease (PD) by iwCLL criteria could be retreated with single-agent ibrutinib until PD or unacceptable toxicity. For patients who had PD >2 years after completion of the fixed-duration regimen, retreatment with the fixed-duration ibrutinib plus venetoclax regimen could be considered.

### **Outcomes and Assessments**

The primary endpoint was complete response (CR) rate (proportion of patients with CR or CR with incomplete BM recovery [CRi]) for patients without del(17p) assessed by investigators by 2008 iwCLL criteria,<sup>23,24</sup> with prespecified supporting analysis in all treated patients. Secondary endpoints were duration of response (time from initial documentation of response until PD or death from any cause), uMRD rates in PB and BM (proportion of patients with <1 CLL cell per 10,000 leukocytes), overall response rate (proportion of patients with partial response [PR] or better) by iwCLL criteria, reduction in tumor burden category for TLS prophylaxis (proportion of patients in high tumor burden category after 3-cycle ibrutinib lead-in versus at baseline), PFS, OS, and safety and tolerability in all treated patients. Sensitivity analyses were performed of CR rates and PFS per independent review committee (IRC) assessment.

Clinical response and progression were assessed by physical examination, hematologic parameters, and radiographic evaluation (computed tomography [CT] or magnetic resonance imaging [MRI]); BM biopsy was performed at cycle 10, at cycle 19, and/or if there was suspected CR on other assessments. Confirmation of response by CT or MRI was required per protocol. Overall response assessments were performed at the end of cycle 3, on day 1 of cycles 7, 10, 13, 19, 25, 28, and 31, and every 6 months thereafter. MRD status was evaluated by central laboratory per European Research Initiative on CLL recommendations<sup>25</sup> using 8-color flow cytometry in PB samples obtained at baseline, on day 1 of cycles 7, 10, and 13, at end of treatment (EOT; 30 days after discontinuation), on day 1

of cycles 19, 25, 28, and 31, and annually thereafter; and in BM samples obtained on day 1 of cycles 10 and 19. Tumor burden categories for TLS prophylaxis were assessed at baseline and before initiation of venetoclax in cycle 4 using criteria described in venetoclax US prescribing information.<sup>5</sup>

Safety assessments included adverse events (AEs), laboratory evaluations, and physical examinations. AEs were monitored throughout treatment until 30 days after last dose of study treatment. Hematological AEs were graded using iwCLL criteria.<sup>23</sup> Nonhematological AEs were graded using National Cancer Institute Common Terminology Criteria for Adverse Events, version 4.03.<sup>26</sup> TLS was assessed using Howard criteria.<sup>27</sup>

Cytogenetics were evaluated by central laboratory or by local laboratory, with central laboratory results used where available. Karyotype, IGHV gene mutational status, and mutational status of other relevant genes, including *TP53*, were assessed by a central laboratory (Supplemental Methods).

### **Statistical Analysis**

Sample size was calculated based on the primary endpoint of CR rate in patients without del(17p). Assuming the CR rate for ibrutinib plus venetoclax is 50%, 125 patients without del(17p), irrespective of *TP53* mutation status, would provide 83% power to exclude a minimum CR rate of 37% at a 1-sided alpha of .025. A CR rate of 50% would represent significant improvement over fixed-duration treatment with bendamustine plus rituximab (BR; 31%) and meaningful improvement over fludarabine, cyclophosphamide, and rituximab (FCR; 40%) in the CLL10 study, which excluded patients with del(17p).<sup>28</sup>

Efficacy and safety were evaluated in all patients who received  $\geq 1$  dose of study treatment with hypothesis testing performed for patients without del(17p). Subgroup analyses by

prognostic factors, including del(17p)/mutated *TP53*, were prespecified in the statistical analysis plan. Time-to-event endpoints were estimated using the Kaplan-Meier method; other efficacy endpoints and AEs were summarized descriptively. 95% CIs for response rates were estimated based on normal approximation to the binomial distribution.

### **Data Sharing Statement**

Requests for access to individual participant data from clinical studies conducted by Pharmacyclics LLC, an AbbVie Company, can be submitted through Yale Open Data Access (YODA) Project site at <http://yoda.yale.edu>

## **RESULTS**

### **Patients**

One hundred fifty-nine patients were enrolled, including 136 patients without del(17p). Median age was 60 years (range, 33-71) (Table 1). A high proportion of patients had 1 or more high-risk disease features, including del(17p) (n = 20; 13%), del(17p) and/or mutated *TP53* (n = 27; 17%), complex karyotype (n = 31; 19%), unmutated IGHV (n = 89; 56%), or del(11q) without del(17p) (n = 28; 18%); 48 patients (30%) had bulky disease (Table 1). Median time on study was 27.9 months (range, 0.8-33.2); 153 of 159 patients completed 3 cycles of ibrutinib lead-in and started treatment with ibrutinib plus venetoclax (Figure 1). Overall, 92% (147/159) of patients completed the planned 12 cycles of combined ibrutinib plus venetoclax.

### **Efficacy**

The primary endpoint was met with a CR rate of 56% (95% CI, 48-64) by investigator assessment in patients without del(17p) (Figure 2A); this rate significantly exceeds the minimum CR rate of 37% (1-sided  $P < .0001$ ) and 40% rate of the historical FCR comparator.<sup>28</sup> CR rates were 55% (95% CI, 48-63) in the all-treated population and 56%

(95% CI, 37-74) in patients with del(17p)/mutated *TP53* (Figure 2A). CR rates by IRC assessment were 60% (95% CI, 52-67) in the all-treated population, 61% (95% CI, 53-69) in patients without del(17p), and 56% (95% CI, 37-74) in patients with del(17p)/mutated *TP53*. CR rates by investigator assessment were high and generally consistent across subgroups defined by baseline characteristics (Figure 2B); the CR rate was higher in patients without versus with bulky disease  $\geq 5$  cm (66% v 31%) and in those with unmutated versus mutated IGHV (62% v 47%). CR rates at 3 months after EOT are shown in Supplemental Table 1. Consistent with CR rates, best overall response rates by investigator assessment were 96% (95% CI, 93-99) in the all-treated population, 96% (95% CI, 92-99) in patients without del(17p), and 96% (95% CI, 89-100) in patients with del(17p)/mutated *TP53* (Figure 2A). Among patients in the all-treated population with best response of PR/nodular PR (nPR), 80% (52/65) had lymph node diameter  $> 1.5$  cm. Among 88 patients in the all-treated population who achieved CR by investigator assessment, 78/79 (99%) with  $\geq 12$  cycles of follow-up had CR lasting  $\geq 12$  cycles; 1 patient died of cardiac arrest 7 months after initial CR and  $\sim 1.5$  months after completion of treatment.

Best uMRD rates were 77% (95% CI, 70-83) in PB and 60% (95% CI, 52-67) in BM in the all-treated population (Figure 3A). In patients without del(17p), uMRD rates were 76% (95% CI, 69-84) in PB and 62% (95% CI, 54-70) in BM. uMRD rates for patients with del(17p)/mutated *TP53* were 81% (95% CI, 67-96) in PB and 41% (95% CI, 22-59) in BM. In the all-treated population, uMRD rates in BM were consistent across patient subgroups based on baseline characteristics (Figure 3B); in contrast to CR rates, uMRD rates were similar in PB (both 77%) and BM (59% v 63%) in patients without versus with bulky disease. uMRD rates were higher in patients with unmutated versus mutated IGHV in PB (84% v 67%) and BM (64% v 53%). In patients with best response of CR ( $n = 88$ ), uMRD rates were 90% in PB and 72% in BM; in patients with PR/nPR ( $n = 65$ ), corresponding rates were 63% and 49%, respectively. Overall, 40% (63/159) of patients had CR and uMRD in BM. uMRD

rates at 3 months after EOT in the all-treated population and in patients with CR are shown in Supplemental Table 1.

With median follow-up of 27.9 months, estimated 24-month PFS rates by investigator assessment were 95% (95% CI, 90-97) in the all-treated population, 96% (95% CI, 91-98) in patients without del(17p) (Figure 4A), and 84% (95% CI, 63-94) in patients with del(17p)/mutated *TP53*. PD events are summarized in Supplemental Table 2. Estimated 24-month PFS rates were 93% (95% CI, 85-97) for patients with unmutated IGHV versus 97% (95% CI, 88-99) for patients with mutated IGHV. PFS by IRC assessment was similar to that assessed by investigators (Supplemental Figure 1). PFS rates by investigator assessment remained high with additional follow-up (Supplemental Figure 2). In the all-treated population, 24-month PFS rates were high (97%-100%) regardless of clinical response (CR/CRi or PR/nPR) and MRD status in BM (undetectable or detectable) at 3 months after EOT (Supplemental Table 3). Estimated 24-month OS rates were 98% (95% CI, 94-99) in the all-treated population, 98% (95% CI, 93-99) in patients without del(17p) (Figure 4B), and 96% (95% CI, 76-99) in patients with del(17p)/mutated *TP53*.

Of the patients with PD after fixed-duration treatment with ibrutinib plus venetoclax, next generation sequencing found no evidence of BTK, PLCg2, or BCL-2 mutations associated with resistance to ibrutinib or venetoclax in 13/13 patients with available data (Supplemental Table 2). Three variants (2 in PLCg2 and 1 in BCL-2) were present at similar levels at baseline and at progression; two of them were common single-nucleotide polymorphisms, and none of the three variants have been previously associated with PD on ibrutinib or venetoclax treatment.

As of Aug 4, 2021, after experiencing PD, 9 patients have been retreated with single-agent ibrutinib. Of the patients retreated with single-agent ibrutinib, 7/9 patients have best response of PR and 2 patients are pending response evaluation. One additional patient who

progressed after completing fixed duration treatment with ibrutinib plus venetoclax received subsequent therapy with acalabrutinib, with response unknown.

### **Tumor Debulking**

At baseline risk assessment for tumor lysis syndrome, 21% (34/159) of patients were categorized as high tumor burden. After 3 cycles of ibrutinib lead-in, 1% (1/159) of patients were in the high tumor burden category for TLS risk (Figure 5A); effective debulking shifted 94% from high to medium or low tumor burden categories and no patients shifted from medium or low to high. The proportion of patients indicated for hospitalization for TLS monitoring and prophylaxis per venetoclax prescribing information decreased from 40% (63/159) at baseline to 18% (28/159) after ibrutinib lead-in (Figure 5B).

### **Safety**

Median duration of treatment was 13.8 months (range, 0.5-24.9), corresponding to fifteen 28-day treatment cycles. The most common treatment-emergent AEs were diarrhea (62%), nausea (43%), neutropenia (42%), and arthralgia (33%) (Table 2); AEs were primarily grade 1/2 in severity. The most common grade 3/4 AEs were neutropenia (33%), hypertension (6%), and neutrophil count decreased (5%). One fatal AE (sudden death) occurred during ibrutinib lead-in. Serious AEs occurred in 36 patients (23%) (Supplemental Table 4).

Among other AEs of clinical interest, atrial fibrillation of any grade occurred in 7 patients (4%) and was grade  $\geq 3$  in 2 patients (1%) (Table 2). Of these patients, 3 had resolution and 4 had ongoing grade 1/2 events at the time of analysis. Major hemorrhage occurred in 3 patients (2%), with cerebral hemorrhage, hemorrhagic cerebral infarction, and retinal hemorrhage in 1 patient each. Bleeding events of any grade occurred in 37/61 (61%) patients receiving concomitant anticoagulants/antiplatelets and 58/98 (59%) patients not receiving anticoagulants/antiplatelets, and were grade 3/4 in 0/58 and 2/98 (2%) patients, respectively. Infections of any grade occurred in 106 (67%) patients, with grade  $\geq 3$  infections

in 13 patients (8%). Febrile neutropenia (grade 4) occurred in 1 patient. No clinical TLS was reported.

Frequencies of hematologic laboratory abnormalities were consistent with the AE profile of the ibrutinib plus venetoclax combination, and frequencies of abnormalities in individual laboratory parameters monitored for TLS were modest (Table 2); no laboratory TLS events were identified by Howard criteria. Overall, per protocol and investigator discretion following local standards of care, 26 (16%) patients were hospitalized for TLS monitoring and prophylaxis. Rasburicase was used for TLS prophylaxis in 8 patients (5%) (Supplemental Table 5).

AEs led to dose reductions of ibrutinib only in 9 patients (6%), venetoclax only in 18 patients (11%), and both ibrutinib and venetoclax in 6 patients (4%) (Supplemental Table 4). Of 33 patients with AEs leading to dose reduction, 88% had resolution at the time of analysis. AEs led to discontinuation of ibrutinib only in 5 patients (3%), venetoclax only in 1 patient (1%), and both ibrutinib and venetoclax in 2 patients (1%) (Supplemental Table 4). With 92% of patients able to complete the full fixed-duration regimen, ibrutinib plus venetoclax appears tolerable regardless of common concomitant medications, notably including anticoagulants (11%), antiplatelet agents (31%), antihypertensives (36%), and acid-reducing agents (44%), such as proton pump inhibitors (30%) (Supplemental Table 5).

## **DISCUSSION**

Results from the FD cohort of the CAPTIVATE study demonstrate that first-line treatment with a fixed-duration regimen of 3 cycles of single-agent ibrutinib followed by 12 cycles of ibrutinib plus venetoclax, the first all-oral, fixed-duration combination regimen for patients with CLL, provides high CR rate, including in those with high-risk genomic features. The primary endpoint was met, with a CR rate of 56% (95% CI, 48-64) by investigator assessment in patients without del(17p), exceeding historical rates with the 2 most

efficacious chemoimmunotherapy comparators of BR (31%) and FCR (40%) in a similar patient population without del(17p) in the CLL10 study, noting that CLL10 included patients aged >70 years.<sup>28</sup> CR rate was consistent with those previously reported with first-line ibrutinib plus venetoclax and is similar to that observed with venetoclax plus obinutuzumab (50%), albeit in a different patient population.<sup>16,18,29</sup> Importantly, CR was maintained for  $\geq 12$  cycles in 78/79 (99%) patients with sufficient follow-up.

In addition to high CR rates, ibrutinib plus venetoclax achieved high rates of uMRD in both PB and BM at the standard cut-off  $10^{-4}$ . Results to date with fixed-duration regimens suggest that achievement of uMRD may be a stronger predictor of PFS than achievement of CR.<sup>30-33</sup> The high uMRD rates in the FD cohort are consistent with those previously reported for the MRD cohort with 12 cycles of combined ibrutinib plus venetoclax (68% in BM and 75% in PB),<sup>16</sup> as well as those reported in a phase 2 study of first-line ibrutinib plus venetoclax (56% in BM after 12 cycles of the combination).<sup>18</sup> uMRD rates also compare favorably with those obtained with FCR, the most efficacious fixed-duration chemoimmunotherapy regimen for first-line CLL (43% in BM and 59%-63% in PB),<sup>2,30,31,33</sup> and are similar to those observed with venetoclax plus obinutuzumab (57% in BM and 76% in PB 3 months after EOT).<sup>29</sup> Analysis of MRD at lower limits of detection remains to be done for CAPTIVATE. CR and uMRD rates were high across patient subgroups, including those with high-risk disease features such as del(17p)/mutated *TP53*, del(11q), and unmutated IGHV gene. Interestingly, the higher CR and uMRD rates observed in high risk unmutated IGHV patients versus those with mutated IGHV may reflect the impact of ibrutinib's inhibition of the BCR pathway, which is relevant for these CLL clones.

With median follow-up of 28 months in the CLL14 study, the 24-month PFS rate was 88% with fixed-duration venetoclax plus obinutuzumab in an older/less fit patient population.<sup>29</sup> In

the CAPTIVATE FD cohort the 24-month PFS rate of 95%, together with results from the CAPTIVATE MRD cohort demonstrating 30-month PFS rates of  $\geq 95\%$  in placebo-randomized patients with confirmed uMRD given MRD-guided treatment,<sup>17</sup> supports the potential for durable, treatment-free remissions with fixed-duration ibrutinib plus venetoclax in younger patients who may prefer time-limited treatment. Patients in the CAPTIVATE study represent a relatively young, fit population (aged  $\leq 70$  years with creatinine clearance  $\geq 60$  mL/min) typical of patients who may be considered eligible for treatment with FCR. Consequently, CAPTIVATE results may not be generalizable to the overall population of patients with CLL who tend to be older and have more comorbidities. However, the randomized phase 3 GLOW study (NCT03462719) evaluated this regimen in a complementary population of unfit/elderly patients (aged  $\geq 65$  years or 18-64 years with cumulative illness rating scale score  $> 6$  or creatinine clearance  $< 70$  mL/min) with previously untreated CLL/SLL. Primary analysis results from the GLOW study demonstrated significantly improved PFS and greater depth of remission (CR rates and uMRD rates) with ibrutinib plus venetoclax compared with chlorambucil plus obinutuzumab.<sup>34</sup>

Tumor debulking with the 3 cycles of ibrutinib lead-in reduced tumor burden category for TLS monitoring and prophylaxis for 94% of patients with high tumor burden at baseline. Consequently, hospitalization with venetoclax initiation was no longer indicated in more than half of patients with such indication at baseline. This is the first regimen to demonstrate this benefit to patients when combined with venetoclax. Additionally, laboratory parameters monitored for TLS were less frequently abnormal during the overall study period than reported with venetoclax plus obinutuzumab in CLL14.<sup>29</sup> With reduced need for intensive monitoring and hospitalization, and no risk of infusion-related reactions, the all-oral, fixed-duration regimen of ibrutinib plus venetoclax offers improved patient convenience and ease of administration.

Ibrutinib plus venetoclax had a favorable safety profile with 92% of patients able to complete all planned treatment with the fixed-duration regimen. The safety profile of ibrutinib plus venetoclax in the FD cohort was similar to that observed in the MRD cohort,<sup>17</sup> and consistent with known safety profiles for each agent alone; no new safety signals were observed. Incidences of diarrhea and neutropenia were somewhat higher than expected with ibrutinib alone. However, most diarrhea events were grade 1/2 in severity, with grade  $\geq 3$  diarrhea in only 3% of patients; the frequency of grade  $\geq 3$  neutropenia (33%) was generally similar to that observed with single-agent venetoclax (37%).<sup>35</sup> All patients who had dose reductions for diarrhea or neutropenia had resolution of the AE without discontinuation. The combination of ibrutinib plus venetoclax was well tolerated in this population of young/fit patients, as evidenced by the low rate of discontinuations due to AEs (5%). Similarly, in the unfit/elderly population of the randomized, phase 3 GLOW study, 77% of patients were able to complete all planned treatment with ibrutinib plus venetoclax.<sup>34</sup> The most common grade  $\geq 3$  AEs were neutropenia/neutrophil count decreased (35%), diarrhea (10%), and hypertension (8%) with ibrutinib plus venetoclax, and neutropenia/neutrophil count decreased (50%), thrombocytopenia (20%), and pneumonia and TLS (6% each) with chlorambucil plus obinutuzumab; grade 5 AEs occurred in 7/106 patients on ibrutinib plus venetoclax and 2/105 patients on chlorambucil plus obinutuzumab.<sup>34</sup>

Importantly, promising clinical responses have been observed in early data of single-agent ibrutinib retreatment in patients with PD after the fixed-duration regimen. Additionally, DNA sequencing of CLL cells from relapsing patients found no resistance-associated mutations in BTK, PLCg2, or BCL-2. Together these results suggest that retreatment after fixed-duration ibrutinib plus venetoclax may be a feasible strategy to provide extended clinical benefit.

In conclusion, first-line ibrutinib plus venetoclax is an all-oral, once-daily, chemotherapy-free, fixed-duration regimen that drives deep, durable responses and can be delivered in the outpatient setting for most young, fit patients with CLL/SLL. Overall, efficacy and safety results from the FD cohort are consistent with those from the MRD cohort,<sup>16,17</sup> representing a robust dataset (N=323) of patients treated with ibrutinib plus venetoclax in the CAPTIVATE study. Fixed-duration combination treatment with ibrutinib plus venetoclax for 12 cycles provides clinically meaningful PFS and treatment-free remissions for patients with previously untreated CLL, including those with high-risk disease features; most patients remain progression-free 1 year after treatment.

### **Acknowledgments**

This study was supported by Pharmacyclics LLC, an AbbVie Company. We thank all the patients who participated in this study and their supportive families, as well as the investigators and clinical research staff from the study centers. We also thank Lisa J. Croner, PhD, for her valuable contributions to bioinformatics analysis of next generation sequencing data; Lisa J. Croner is an employee of AbbVie and owns AbbVie stock. Medical writing support was provided by Melanie Sweetlove, MSc, and funded by Pharmacyclics LLC, an AbbVie Company.

### **Contributors**

C.S.T., J.N., J.P.D., C.Z., W.G.W., and P.G. designed the study; C.S.T., J.N.A., T.S., T.J.K., S.O., P.M.B., A.T., L.T., R.B., S.J., B.J.K., C.M., W.G.W., and P.G. enrolled patients and collected the data; all authors had access to the data and were involved in the interpretation of data, contributed to manuscript review and revisions, and approved the final version for submission.

### **Disclosure of Conflicts of Interest**

C.S.T. reports honoraria from Janssen, AbbVie, BeiGene, Janssen, and Loxo Oncology; and research funding from AbbVie, BeiGene, and Janssen. J.N.A. reports honoraria from AbbVie, AstraZeneca, and Janssen; a consulting/advisory role for AbbVie, ADC Therapeutics, Ascentage, AstraZeneca, BeiGene, Epizyme, Genentech, TG Therapeutics, and Pharmacyclics LLC, an AbbVie Company; research funding from AstraZeneca, Celgene, Genentech, Janssen, and TG Therapeutics; and speakers bureau for AbbVie, AstraZeneca, BeiGene, Janssen, and Pharmacyclics LLC, an AbbVie Company. T.S. reports a consulting/advisory role for AstraZeneca, BeiGene, Bristol Myers Squibb, Celgene, Juno Therapeutics, and Kite Pharma; research funding from AstraZeneca, Ascentage, BeiGene, Celgene, Juno Therapeutics, Kite Pharma, Oncternal, TG Therapeutics, and Pharmacyclics LLC, an AbbVie Company; and speakers bureau for AstraZeneca, BeiGene, Janssen, and Pharmacyclics LLC, an AbbVie Company. T.J.K. reports a consulting/advisory role for AbbVie, Celgene, Genentech-Roche, Gilead Sciences, and Pharmacyclics LLC, an AbbVie Company; research funding from AbbVie, Genentech-Roche, Oncternal Therapeutics, and Pharmacyclics LLC, an AbbVie Company. R.J. reports a consulting/advisory role for AbbVie, AstraZeneca, Verastem, and Pharmacyclics LLC, an AbbVie Company; research funding from MEI Pharma, TeneoBio, TG Therapeutics, and Pharmacyclics LLC, an AbbVie Company; and speakers bureau for AbbVie, AstraZeneca, BeiGene, Janssen, and Pharmacyclics LLC, an AbbVie Company. S.O. reports honoraria from and a consulting/advisory role for AbbVie, Antengene, AstraZeneca, CSL, Gilead, Janssen, Merck, Roche, and Takeda; and research funding from AbbVie, Antengene, AstraZeneca, BeiGene, CSL, Gilead, Janssen, Roche, Merck, Takeda, and Pharmacyclics LLC, an AbbVie Company. P.M.B. reports a consulting/advisory role for AbbVie, AstraZeneca, Bristol Myers Squibb, Celgene, Genentech, Gilead, Janssen, Merck, MEI Pharma, MorphoSys, Seagen, TG Therapeutics, and Pharmacyclics LLC, an AbbVie Company; and research funding from AstraZeneca and TG Therapeutics. A.T. reports a consulting/advisory role and speakers bureau for AbbVie, AstraZeneca, BeiGene, and Janssen. L.T. reports honoraria from and a consulting/advisory role for AbbVie, Janssen, and Takeda; and research funding from and

speakers bureau for Janssen. R.B. reports employment and stock or other ownership of an immediate family member with Sanofi-Pasteur; and research funding from AbbVie, Genentech-Roche, Merck, Regeneron, and Pharmacyclics LLC, an AbbVie Company. S.J. reports a consulting/advisory role and speakers bureau for AbbVie; research funding from AbbVie, GlaxoSmithKline, and Roche; and travel/accommodations/expenses from Roche. B.J.K. reports stock or other ownership with Commonwealth Serum Laboratories; honoraria from and a consulting/advisory role for AbbVie, Janssen, Kyowa Kirin, Merck, Mundipharma, Roche, and Takeda; speakers bureau for AbbVie, Janssen, and Roche; and expert testimony for AbbVie. C.M. reports a consulting/advisory role for AbbVie, AstraZeneca, BeiGene, and Janssen; and research funding from and speakers bureau for AbbVie and Janssen. E.S-G., K.R., C.Z., and J.P.D. report employment with Pharmacyclics LLC, an AbbVie Company; and stock or other ownership with AbbVie. J.N. reports employment with Summit Therapeutics and previous employment with Pharmacyclics LLC, an AbbVie Company; and stock or other ownership with AbbVie. W.G.W. reports research funding from AbbVie, Acerta/AstraZeneca, Cyclacel, Genentech, Gilead Sciences, GlaxoSmithKline/Novartis, Janssen, Juno Therapeutics, Kite Pharma, Loxo Oncology, Miragen, Oncternal Therapeutics, Sunesis, Xencor, and Pharmacyclics LLC, an AbbVie Company. P.G. reports honoraria from and a consulting/advisory role for AbbVie, AstraZeneca, ArQule/MSD, Celgene/Juno/Bristol Myers Squibb, Janssen, Lilly/Loxo, MEI Pharma, and Roche; and research funding from AbbVie, AstraZeneca, Janssen, and Sunesis.

## References

1. Burger JA, Barr PM, Robak T, et al. Long-term efficacy and safety of first-line ibrutinib treatment for patients with CLL/SLL: 5 years of follow-up from the phase 3 RESONATE-2 study. *Leukemia*. 2020;34:787-798
2. Shanafelt TD, Wang XV, Kay NE, et al. Ibrutinib-rituximab or chemoimmunotherapy for chronic lymphocytic leukemia. *N Engl J Med*. 2019;381:432-443
3. Moreno C, Greil R, Demirkan F, et al. Ibrutinib plus obinutuzumab versus chlorambucil plus obinutuzumab in first-line treatment of chronic lymphocytic leukaemia (iLLUMINATE): a multicentre, randomised, open-label, phase 3 trial. *Lancet Oncol*. 2019;20:43-56
4. Woyach JA, Ruppert AS, Heerema NA, et al. Ibrutinib regimens versus chemoimmunotherapy in older patients with untreated CLL. *N Engl J Med*. 2018;379:2517-2528
5. VENCLEXTA (venetoclax tablets) for oral use [package insert]. South San Francisco, CA: Genentech USA Inc; 2020
6. Roberts AW, Davids MS, Pagel JM, et al. Targeting BCL2 with venetoclax in relapsed chronic lymphocytic leukemia. *N Engl J Med*. 2016;374:311-22
7. Stilgenbauer S, Eichhorst B, Schetelig J, et al. Venetoclax for patients with chronic lymphocytic leukemia with 17p deletion: results from the full population of a phase II pivotal trial. *J Clin Oncol*. 2018;36:1973-1980
8. Stilgenbauer S, Eichhorst B, Schetelig J, et al. Venetoclax in relapsed or refractory chronic lymphocytic leukaemia with 17p deletion: a multicentre, open-label, phase 2 study. *Lancet Oncol*. 2016;17:768-778
9. Cervantes-Gomez F, Lamothe B, Woyach JA, et al. Pharmacological and protein profiling suggests venetoclax (ABT-199) as optimal partner with ibrutinib in chronic lymphocytic leukemia. *Clin Cancer Res*. 2015;21:3705-3715
10. Wang YLL, Franzen C, Wang S, et al. Ibrutinib and venetoclax target distinct subpopulation of CLL cells: rationale for drug combination and implication of minimal

residual disease eradication. Presented at: 61st American Society of Hematology (ASH) Annual Meeting and Exposition; December 7-10, 2019; Orlando, FL

11. Herman SE, Gordon AL, Hertlein E, et al. Bruton tyrosine kinase represents a promising therapeutic target for treatment of chronic lymphocytic leukemia and is effectively targeted by PCI-32765. *Blood*. 2011;117:6287-6296

12. Slinger E, Balasubramanian S, Levenson JD, et al. Combinatorial treatment of chronic lymphocytic leukemia with ibrutinib and venetoclax is superior to treatment with single agents in the TCL1 mouse model. *Blood*. 2017;130:3018

13. Haselager MV, Kielbassa K, Ter Burg J, et al. Changes in Bcl-2 members in response to ibrutinib or venetoclax uncover functional hierarchy in determining resistance to venetoclax in CLL. *Blood*. 2020;136:2918-2926

14. Byrd JC, Furman RR, Coutre SE, et al. Targeting BTK with ibrutinib in relapsed chronic lymphocytic leukemia. *N Engl J Med*. 2013;369:32-42

15. Deng J, Isik E, Fernandes SM, et al. Bruton's tyrosine kinase inhibition increases BCL-2 dependence and enhances sensitivity to venetoclax in chronic lymphocytic leukemia. *Leukemia*. 2017;31:2075-2084

16. Siddiqi T, Tam CS, Allan JN, et al. First-line ibrutinib (Ibr) + venetoclax (Ven) for patients (pts) with chronic lymphocytic leukemia (CLL)/small lymphocytic lymphoma (SLL): efficacy and safety results from CAPTIVATE MRD cohort. Presented at: EHA25 Virtual; June 11-21, 2020

17. Wierda WG, Allan JN, Siddiqi T, et al. Ibrutinib plus venetoclax for first-line treatment of chronic lymphocytic leukemia: primary analysis results from the minimal residual disease cohort of the randomized phase II CAPTIVATE study. *J Clin Oncol*. 2021;39:3853-3865

18. Jain N, Keating M, Thompson P, et al. Ibrutinib plus venetoclax for first-line treatment of chronic lymphocytic leukemia: A nonrandomized phase 2 trial. *JAMA Oncol*. 2021;7(8):1213-1219

19. Jain N, Keating MJ, Thompson PA, et al. Combined ibrutinib and venetoclax in patients with relapsed/refractory (R/R) chronic lymphocytic leukemia (CLL). Presented at: 61st American Society of Hematology (ASH) Annual Meeting and Exposition; December 7-10, 2019; Orlando, FL
20. Niemann CU, Levin MD, Dubois J, et al. Venetoclax and ibrutinib for patients with relapsed/refractory chronic lymphocytic leukemia. *Blood*. 2021;137:1117-1120
21. Thompson PA, Ferrajoli A, Jain N, et al. The addition of venetoclax to ibrutinib achieves a high rate of undetectable minimal residual disease in patients with high-risk CLL. *Blood*. 2020;136:28-29
22. Hillmen P, Boucher RH, Webster N, et al. Continued long term responses to ibrutinib + venetoclax treatment for relapsed/refractory CLL in the blood cancer UK TAP CLARITY trial. *Blood*. 2020;136:17-18
23. Hallek M, Cheson BD, Catovsky D, et al. Guidelines for the diagnosis and treatment of chronic lymphocytic leukemia: a report from the International Workshop on Chronic Lymphocytic Leukemia updating the National Cancer Institute-Working Group 1996 guidelines. *Blood*. 2008;111:5446-5456
24. Hallek M, Cheson B, Catovsky D. Response assessment in chronic lymphocytic leukemia treated with novel agents causing an increase in peripheral blood lymphocytes. *Blood*. 2012;119:5348
25. Rawstron AC, Fazi C, Agathangelidis A, et al. A complementary role of multiparameter flow cytometry and high-throughput sequencing for minimal residual disease detection in chronic lymphocytic leukemia: an European Research Initiative on CLL study. *Leukemia*. 2016;30:929-936
26. National Cancer Institute. Common Terminology Criteria for Adverse Events (CTCAE), version 4.03. Bethesda, MD, 2009
27. Howard SC, Jones DP, Pui CH. The tumor lysis syndrome. *N Engl J Med*. 2011;364:1844-1854

28. Eichhorst B, Fink AM, Bahlo J, et al. First-line chemoimmunotherapy with bendamustine and rituximab versus fludarabine, cyclophosphamide, and rituximab in patients with advanced chronic lymphocytic leukaemia (CLL10): an international, open-label, randomised, phase 3, non-inferiority trial. *Lancet Oncol.* 2016;17:928-942
29. Fischer K, Al-Sawaf O, Bahlo J, et al. Venetoclax and obinutuzumab in patients with CLL and coexisting conditions. *N Engl J Med.* 2019;380:2225-2236
30. Bottcher S, Ritgen M, Fischer K, et al: Minimal residual disease quantification is an independent predictor of progression-free and overall survival in chronic lymphocytic leukemia: a multivariate analysis from the randomized GCLLSG CLL8 trial. *J Clin Oncol.* 2012;30:980-988
31. Strati P, Keating MJ, O'Brien SM, et al. Eradication of bone marrow minimal residual disease may prompt early treatment discontinuation in CLL. *Blood.* 2014;123:3727-3732
32. Kater AP, Seymour JF, Hillmen P, et al. Fixed duration of venetoclax-rituximab in relapsed/refractory chronic lymphocytic leukemia eradicates minimal residual disease and prolongs survival: post-treatment follow-up of the MURANO phase III study. *J Clin Oncol.* 2019;37:269-277
33. Thompson PA, Tam CS, O'Brien SM, et al. Fludarabine, cyclophosphamide, and rituximab treatment achieves long-term disease-free survival in IGHV-mutated chronic lymphocytic leukemia. *Blood.* 2016;127:303-9
34. Kater A, Owen C, Moreno C, et al. Fixed-duration ibrutinib and venetoclax (I+V) versus chlorambucil plus obinutuzumab (CLB+O) for first-line (1L) chronic lymphocytic leukemia (CLL): primary analysis of the phase 3 GLOW study. Poster presented at: EHA 2021 Virtual Congress; June 9-17, 2021.
35. Davids MS, Hallek M, Wierda W, et al. Comprehensive safety analysis of venetoclax monotherapy for patients with relapsed/refractory chronic lymphocytic leukemia. *Clin Cancer Res.* 2018;24:4371-4379

## TABLES

**Table 1. Patient demographics and disease characteristics at baseline**

Characteristic	All treated patients N = 159
Age	
Median, years (range)	60 (33-71)
≥65 years, n (%)	45 (28)
Male, n (%)	106 (67)
ECOG PS, n (%)	
0	110 (69)
1	49 (31)
Histology, n (%)	
CLL	146 (92)
SLL	13 (8)
Rai stage, n (%)	
0/I/II	113 (71)
III/IV	44 (28)
Missing	2 (1)
Bulky disease, n (%)	
≥5 cm	48 (30)
≥10 cm	5 (3)
Cytopenia at baseline, n (%)	
Any cytopenia	54 (34)
Hemoglobin ≤11 g/dL	37 (23)
Platelet count ≤100×10 <sup>9</sup> /L	21 (13)
ANC ≤1.5×10 <sup>9</sup> /L	13 (8)
Hierarchical cytogenetics (FISH) classification, n (%) <sup>*</sup>	
Del(17p)	20 (13)
Del(11q)	28 (18)
Trisomy 12	23 (14)
Normal	33 (21)
Del(13q)	54 (34)
Unknown	1 (1)
Mutated <i>TP53</i> , n (%)	
Yes	16 (10)
No	142 (89)
Unknown	1 (1)
Del(17p) or mutated <i>TP53</i> , n (%)	
Yes	27 (17)
No	129 (81)
Unknown	3 (2)
IGHV gene mutation status, n (%)	
Unmutated	89 (56)
Mutated	66 (42)
Unknown	4 (3)
Complex karyotype, n (%) <sup>†</sup>	
Yes	31 (19)
No	102 (64)
Unknown	26 (16)

Abbreviations: ANC, absolute neutrophil count; ECOG PS, Eastern Cooperative Oncology Group performance status; FISH, fluorescence in situ hybridization; MRD, minimal residual disease.

\*Per Döhner hierarchy.

†Defined as  $\geq 3$  abnormalities by CpG-stimulated cytogenetics.

**Table 2. Treatment-emergent adverse events**

AEs, n (%)	All treated patients N = 159	
	Any grade	Grade 3/4
<b>Most Common AEs*</b>		
Diarrhea	99 (62)	5 (3)
Nausea	68 (43)	2 (1)
Neutropenia	66 (42)	52 (33)
Arthralgia	53 (33)	2 (1)
Hypertension	25 (16)	9 (6)
Neutrophil count decreased	16 (10)	8 (5)
<b>Other AEs of clinical interest</b>		
Atrial fibrillation	7 (4)	2 (1)
Major hemorrhage <sup>†</sup>	3 (2)	2 (1)
<b>Laboratory safety parameters</b>		
<b>Hematology</b>		
Neutrophils decreased	115 (72)	60 (38)
Platelets decreased	94 (59)	20 (13)
Hemoglobin decreased	31 (19)	0
<b>Chemistry</b>		
Corrected calcium decreased	61 (38)	1 (1)
Potassium increased	39 (25)	4 (3)
Uric acid increased	34 (21)	34 (21)
Creatinine increased	27 (17)	0

AE indicates adverse event.

\*AEs of any grade occurring in  $\geq 30\%$  of patients or grade 3/4 occurring in  $\geq 5\%$  of patients.

<sup>†</sup>Major hemorrhage was identified using the Standardised MedDRA Query for Hemorrhage, excluding laboratory terms.

## FIGURE LEGENDS

**Figure 1. Patient flow and disposition.** FD indicates Fixed Duration. \*Hepatitis, erythematous rash, and cerebral hemorrhage in 1 patient each. †Sudden death on study day 23 in a 54-year-old male with a medical history of hypertension, hyperlipidemia, smoking, fatigue, anxiety, depression, insomnia, and gastroesophageal reflux disease. ‡Hemorrhagic cerebral infarction and sinus arrest in 1 patient each. §Pneumonia and neutropenia + pharyngitis in 1 patient each. ||Patient discontinued venetoclax due to an adverse event (nausea + vomiting) and subsequently discontinued ibrutinib due to investigator decision.

**Figure 2. Best overall response.** (A) Best overall response rates as assessed by the investigator in the all-treated population and in patients without del(17p) or with del(17p)/mutated *TP53*. (B) Forest plots of investigator-assessed CR rates across patient subgroups by baseline characteristics in the all-treated population. CI indicates confidence interval; CR, complete response; CRi, complete response with incomplete bone marrow recovery; DOCR, duration of CR; ECOG PS, Eastern Cooperative Oncology Group performance status; FISH, fluorescence in situ hybridization; ORR, overall response rate; nPR, nodular partial response; PR, partial response. \*After achieving CR, 9 patients with <1 year of follow-up were not evaluable; 1 patient died of cardiac arrest 7 months after initial CR and 47 days after completion of therapy. †Per Döhner hierarchy. ‡Proportion of patients with CR or CRi.

**Figure 3. Best MRD response.** (A) Rates of undetectable MRD in peripheral blood and bone marrow in patients without del(17p) or with del(17p) and/or mutated *TP53*. (B) Forest plot of undetectable MRD in bone marrow across patient subgroups by baseline characteristics in the all-treated population. Error bars represent 95% CIs. MRD indicates minimal residual disease; uMRD, undetectable minimal residual disease. \*Per Döhner hierarchy.

**Figure 4. PFS and OS.** Kaplan-Meier curves of (A) PFS as assessed by investigators and (B) OS in the all-treated population and in patients without del(17p). Tick marks indicate patients with censored data. Shading indicates time on treatment. OS indicates overall survival; PFS, progression-free survival.

**Figure 5. Impact of single-agent ibrutinib lead-in on tumor burden for TLS**

**prophylaxis.** (A) Tumor burden categories for TLS prophylaxis at baseline and after ibrutinib lead-in in the all-treated population. (B) Indication for hospitalization<sup>a</sup> for TLS monitoring and prophylaxis at baseline and after ibrutinib lead-in in the all-treated population. TLS indicates tumor lysis syndrome. <sup>a</sup>Defined as patients in high tumor burden category for TLS prophylaxis or patients in medium tumor burden category with creatinine clearance <80 mL/min. Of 28 patients who met the criteria for indication for hospitalization after lead-in, 27 had medium tumor burden and a CrCL of <80ml/min and 1 had high tumor burden.

**Enrolled to CAPTIVATE FD cohort**  
(N = 159)



**Started ibrutinib lead-in**  
(N = 159)



**Discontinued during ibrutinib lead-in (n = 6)**  
Adverse events 3  
Consent withdrawal 2  
Death 1

**Completed ibrutinib lead-in and started ibrutinib + venetoclax**  
(n = 153)



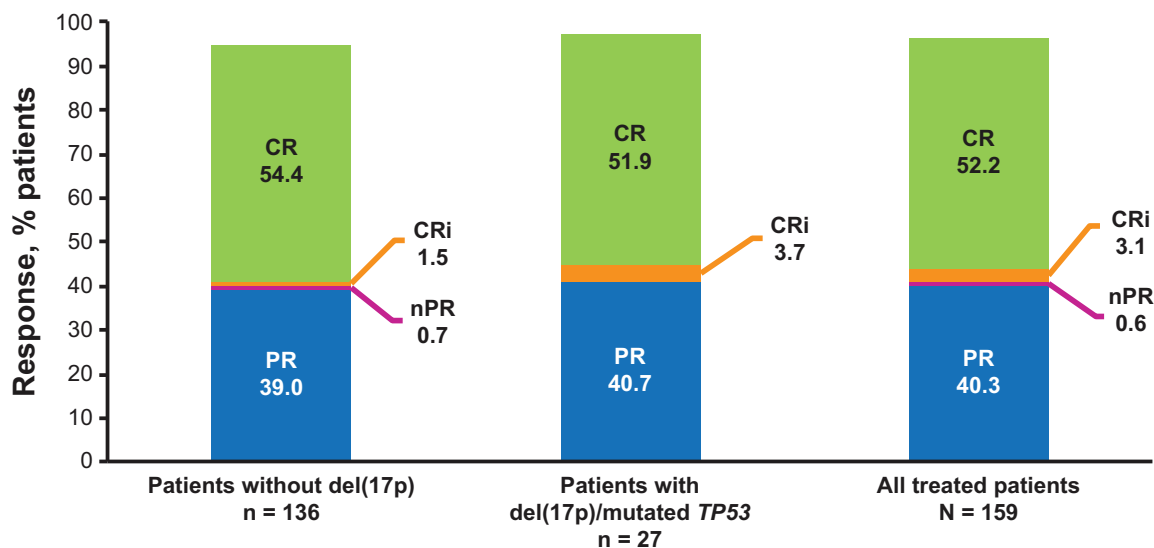
**Discontinued ibrutinib during combination therapy (n = 2)**  
Adverse events 2

**Discontinued ibrutinib and venetoclax during combination therapy (n = 4)**  
Adverse events 2  
Progressive disease/Richter transformation 1  
Investigator decision/adverse event 1

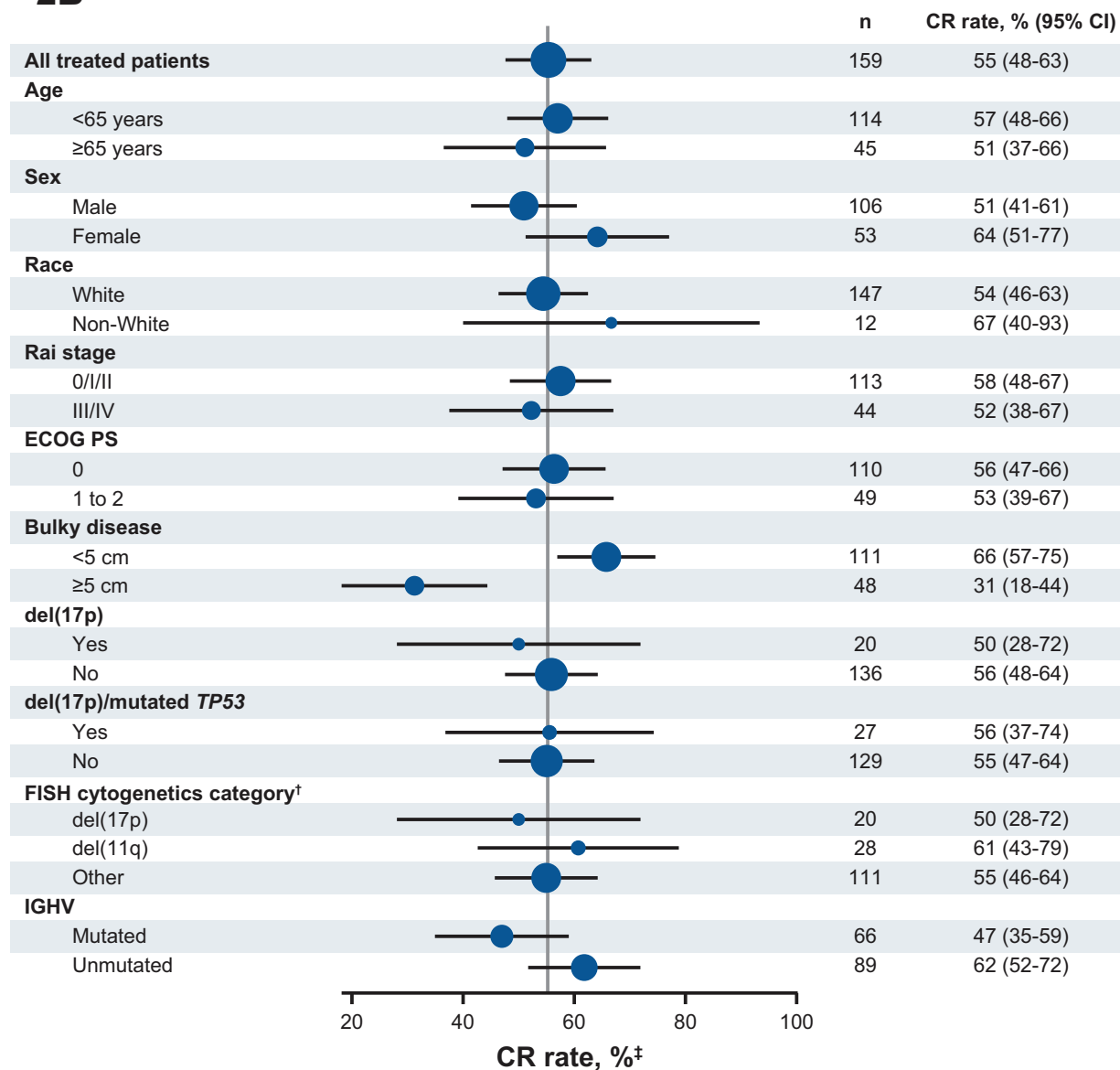
**Completed 12 cycles of ibrutinib + venetoclax**  
(n = 147)

## 2A

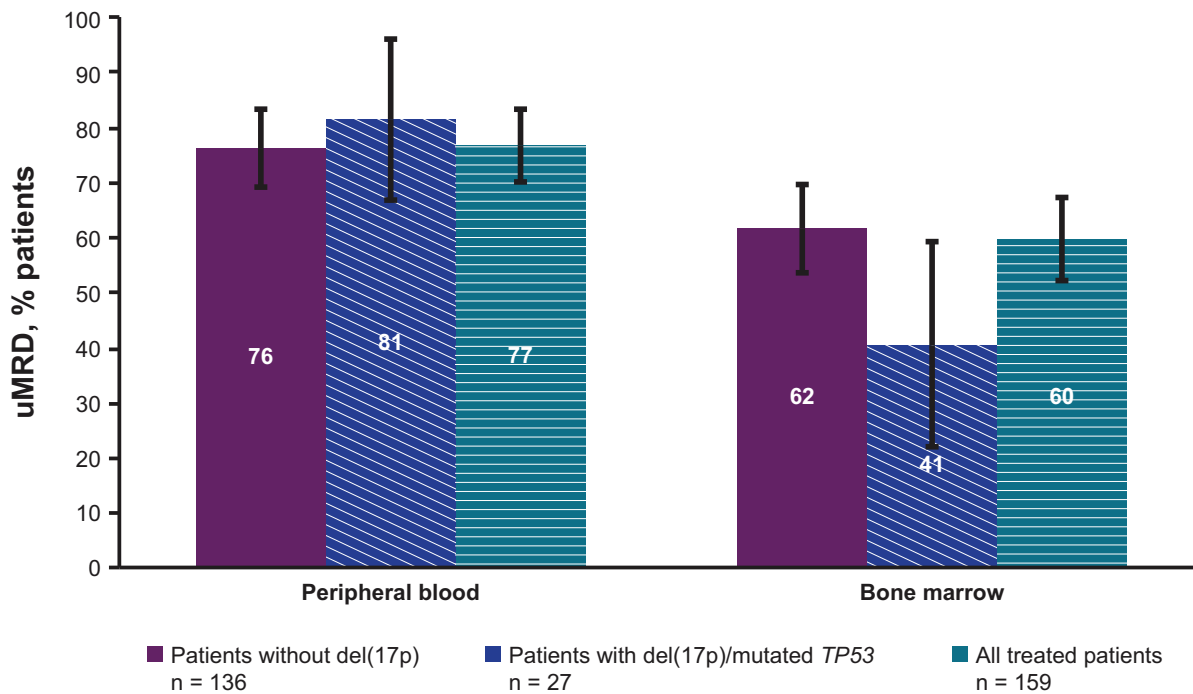
	Patients without del(17p) n = 136	Patients with del(17p)/mutated <i>TP53</i> n = 27	All treated patients N = 159
<b>Best response, % (95% CI)</b>			
CR/CRi	56 (48-64)	56 (37-74)	55 (48-63)
ORR	96 (92-99)	96 (89-100)	96 (93-99)
<b>Duration of CR ≥12 cycles, n/N (%)</b>	66/76 (87)	13/15 (87)	78/88 (89)*



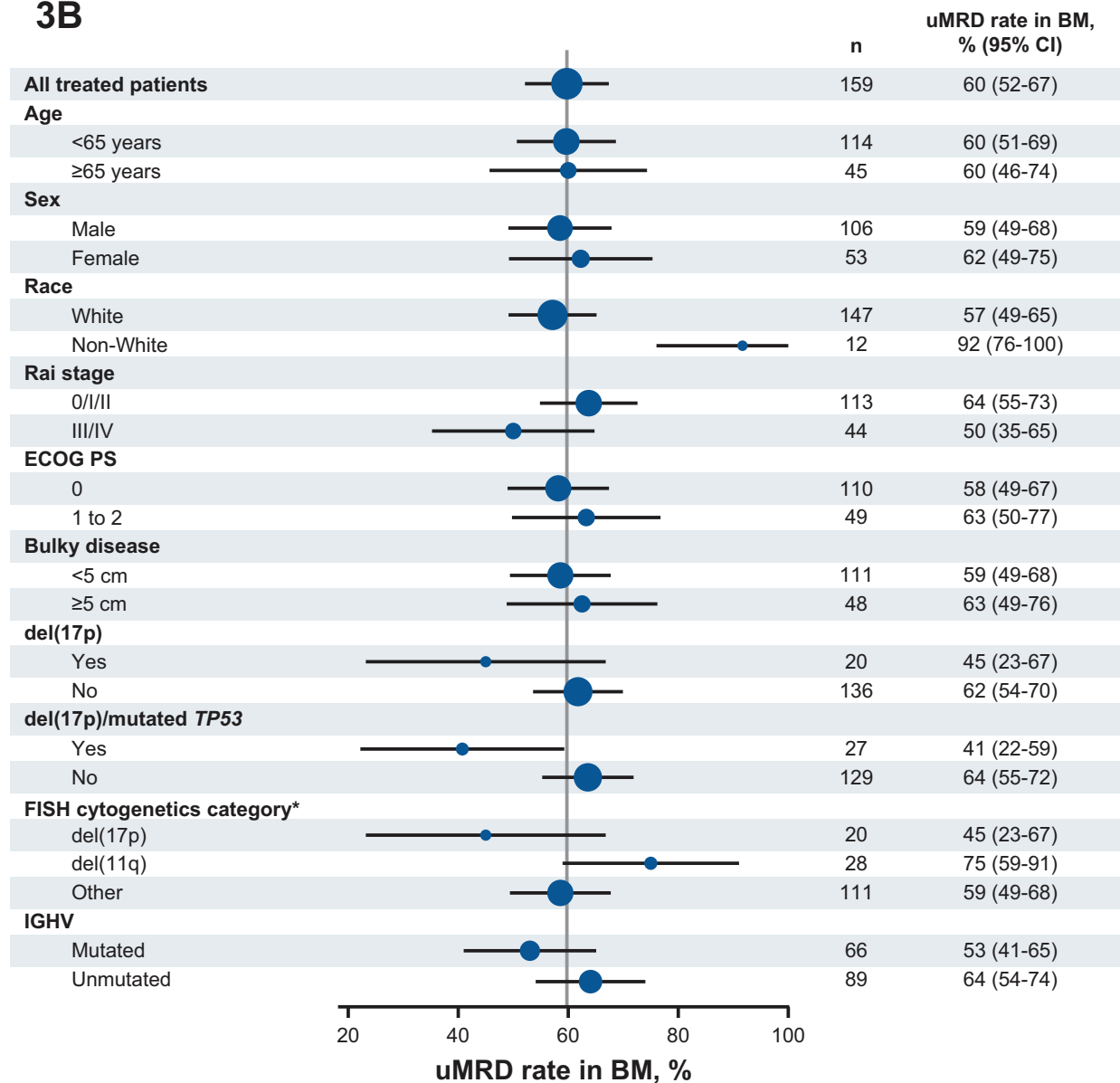
## 2B



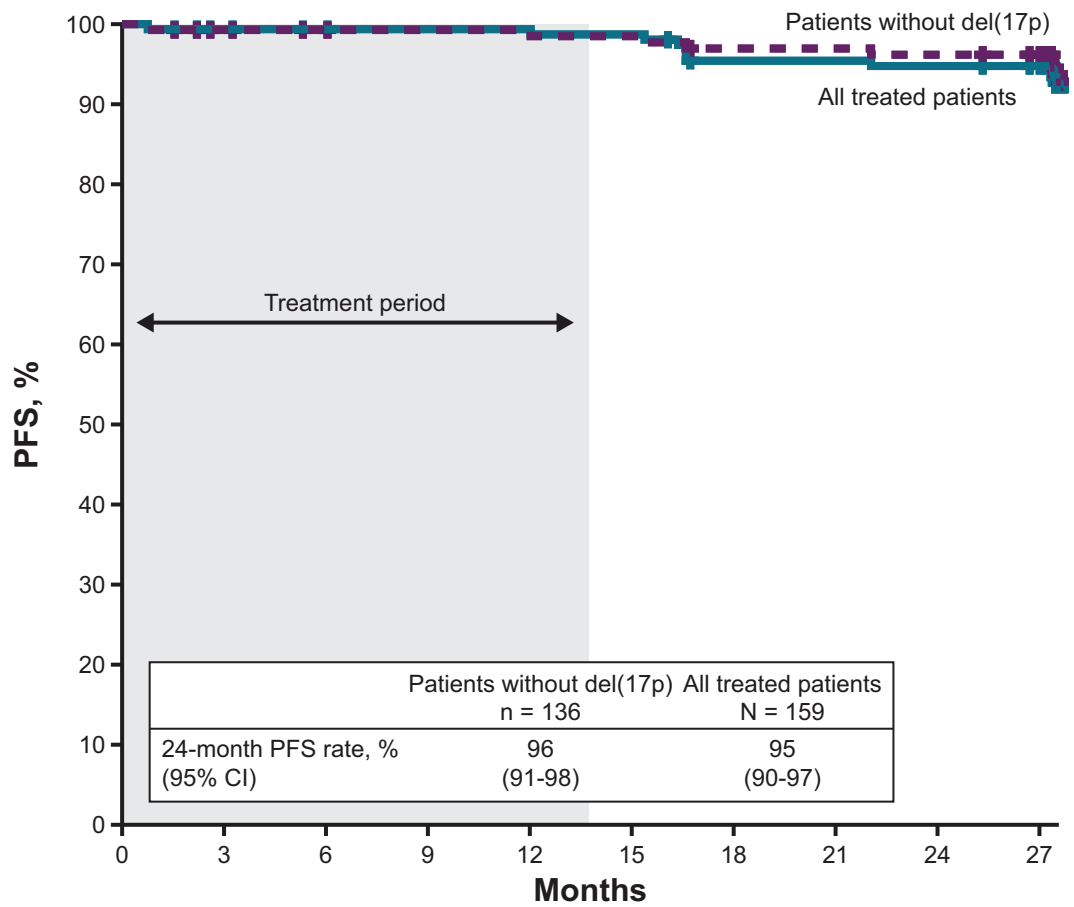
### 3A



### 3B

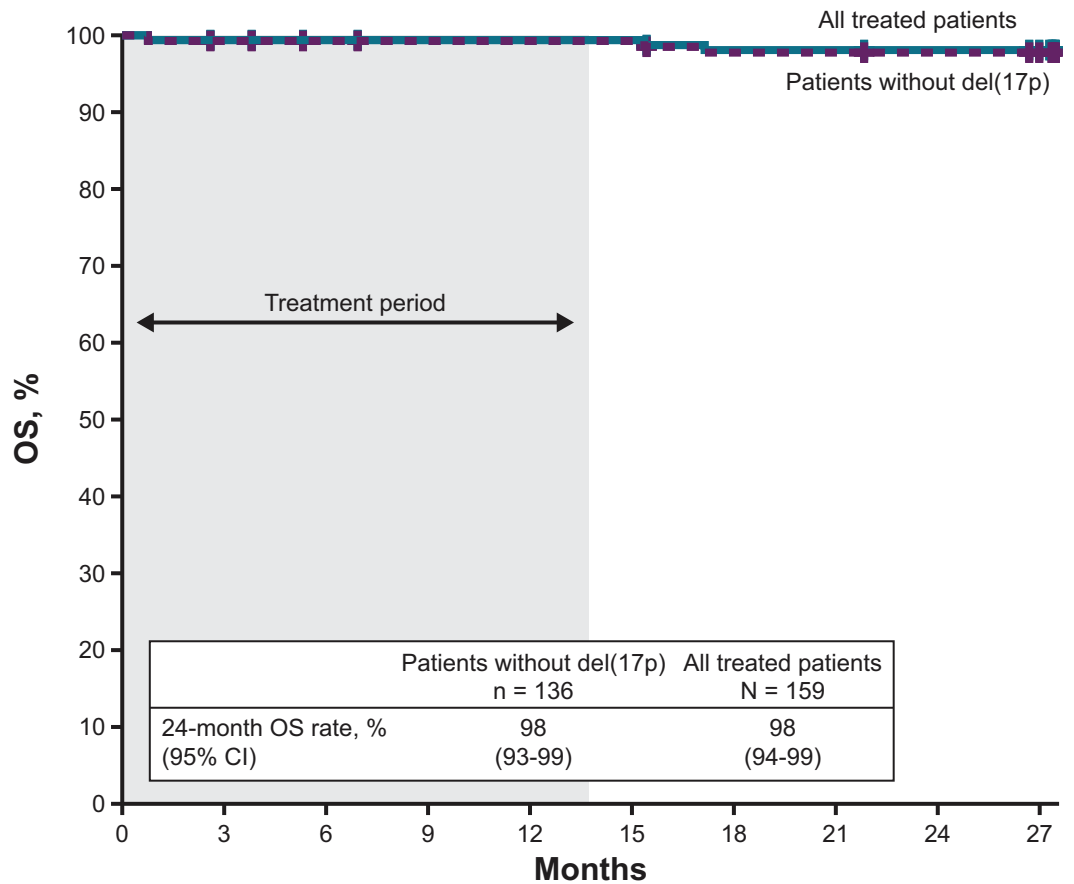


# 4A

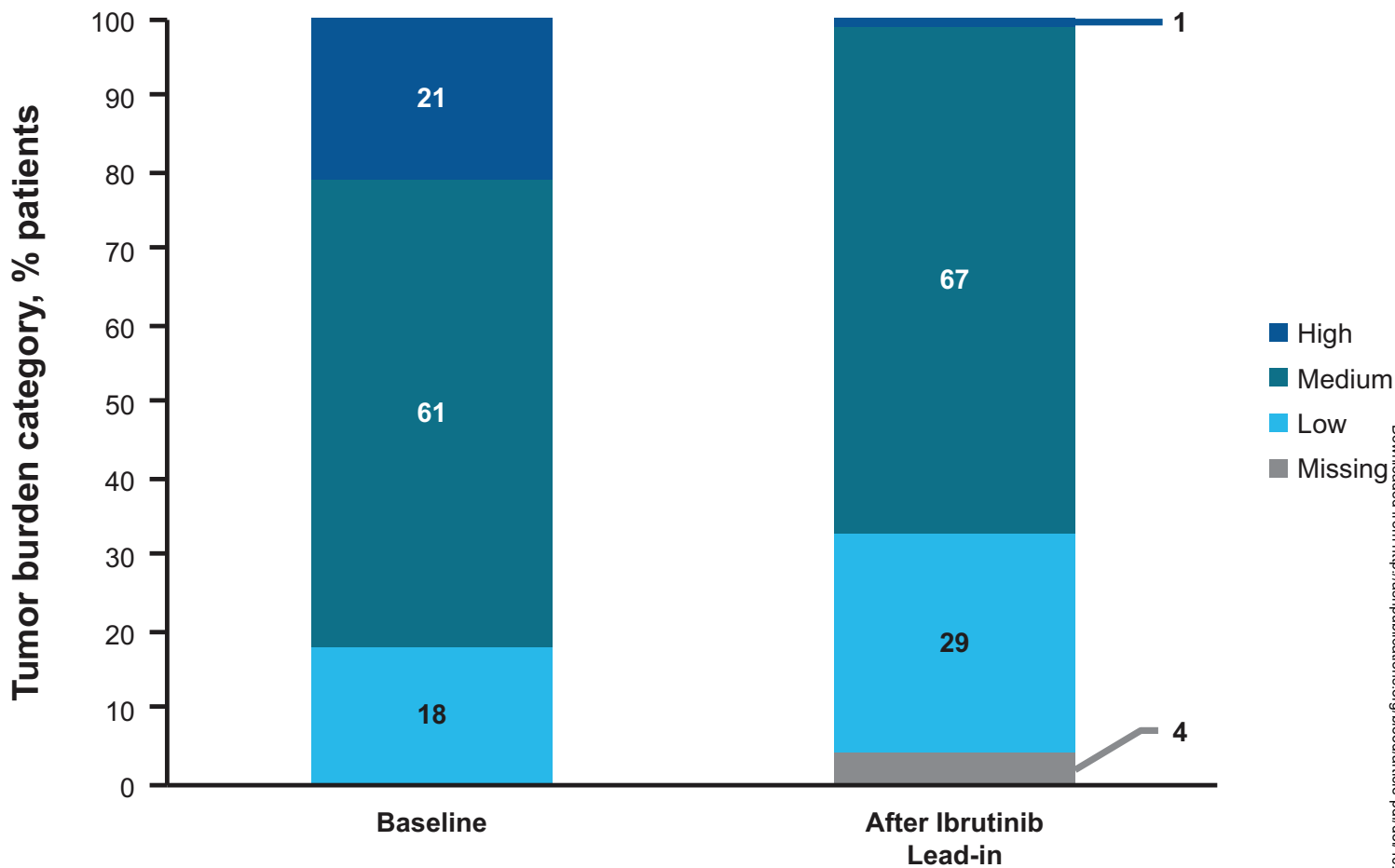


Patients at Risk	0	3	6	9	12	15	18	21	24	27
All treated patients	159	155	153	152	152	151	144	144	143	141
Patients without del(17p)	136	132	130	129	129	128	125	125	124	122

# 4B



Patients at Risk	0	3	6	9	12	15	18	21	24	27
All treated patients	159	157	155	154	154	154	151	151	150	149
Patients without del(17p)	136	134	132	131	131	131	128	128	127	126

**5A****5B**