



Minerva Access is the Institutional Repository of The University of Melbourne

Author/s:

Kocarnik, JM;Hua, X;Hardikar, S;Robinson, J;Lindor, NM;Win, AK;Hopper, JL;Figueiredo, JC;Potter, JD;Campbell, PT;Gallinger, S;Cotterchio, M;Adams, SV;Cohen, SA;Phipps, AI;Newcomb, PA

Title:

Long-term weight loss after colorectal cancer diagnosis is associated with lower survival: The Colon Cancer Family Registry

Date:

2017-12-01

Citation:

Kocarnik, J. M., Hua, X., Hardikar, S., Robinson, J., Lindor, N. M., Win, A. K., Hopper, J. L., Figueiredo, J. C., Potter, J. D., Campbell, P. T., Gallinger, S., Cotterchio, M., Adams, S. V., Cohen, S. A., Phipps, A. I. & Newcomb, P. A. (2017). Long-term weight loss after colorectal cancer diagnosis is associated with lower survival: The Colon Cancer Family Registry. *Cancer*, 123 (23), pp.4701-4708. <https://doi.org/10.1002/cncr.30932>.

Persistent Link:

<https://hdl.handle.net/11343/293368>

Long-term weight loss after colorectal cancer diagnosis is associated with lower survival: the Colon Cancer Family Registry

Jonathan M. Kocarnik, PhD^{*1,2}, Xinwei Hua, MPH¹, Sheetal Hardikar, PhD^{1,3}, Jamaica Robinson, MPH¹, Noralane M. Lindor, MD⁴, Aung Ko Win, PhD^{5,6}, John Hopper, PhD⁵, Jane C. Figueiredo, PhD^{7,8}, John D. Potter, MD, PhD¹, Peter T. Campbell, PhD⁹, Steven Gallinger, MD¹⁰, Michelle Cotterchio, PhD¹⁰, Scott V. Adams, PhD¹¹, Stacey A. Cohen, MD^{12,13}, Amanda I. Phipps, PhD^{1,3}, Polly A. Newcomb, PhD¹

¹ Public Health Sciences, Fred Hutchinson Cancer Research Center, Seattle, WA, USA

² Institute of Translational Health Sciences, Seattle, WA, USA

³ Department of Epidemiology, University of Washington, Seattle, WA, USA

⁴ Department of Health Sciences Research, Mayo Clinic, Scottsdale, AZ, USA

⁵ Melbourne School of Population & Global Health, The University of Melbourne, Melbourne, Victoria, Australia

⁶ Centre for Cancer Research, Victorian Comprehensive Cancer Centre, Melbourne, Victoria, Australia

⁷ Department of Preventive Medicine, University of Southern California, Los Angeles, California, USA

⁸ Samuel Oschin Comprehensive Cancer Institute, Cedars-Sinai Medical Center, Los Angeles, California, USA

⁹ Epidemiology Research Program, American Cancer Society, Atlanta, GA, USA

¹⁰ Prevention and Cancer Control, Cancer Care Ontario, Toronto, ON, Canada

¹¹ Department of Medicine, University of Washington, Seattle, WA, USA

¹² Division of Oncology, University of Washington, Seattle, WA, USA

¹³ Clinical Research Division, Fred Hutchinson Cancer Research Center, Seattle, WA, USA

***Correspondance:** 1100 Fairview Ave N, Mailstop M4-B402
Seattle, WA 98109
jkocarni@fhcrc.org
Phone: (206)667-5257
Fax: (206)667-7850

Funding:

This work was supported by the National Cancer Institute (NCI; K05 CA152715, K07 CA172298, and UM1 CA167551) and the National Center for Advancing Translational Sciences (KL2 TR000421) at the National Institutes of Health (NIH), and through cooperative agreements with the following centers: Australasian Colorectal Cancer Family Registry (U01 CA074778 and U01/U24 CA097735), Mayo Clinic Cooperative Family Registry for Colon Cancer Studies (U01/U24 CA074800), Ontario Familial Colorectal Cancer Registry (U01/U24 CA074783), and Seattle Colorectal Cancer Family Registry (U01/U24 CA074794). Seattle CCFR research was also supported by the Cancer Surveillance System of the Fred Hutchinson Cancer Research Center (FHCRC), which was funded by Control Nos. N01-CN-67009 (1996-2003) and N01-PC-35142 (2003-2010) and Contract No. HHSN2612013000121 (2010-2017) from the Surveillance, Epidemiology and End Results (SEER) Program of the NCI with additional support from the FHCRC.

This is the author manuscript accepted for publication and has undergone full peer review but has not been through the copyediting, typesetting, pagination and proofreading process, which may lead to differences between this version and the [Version record](#). Please cite this article as [doi:10.1002/cncr.30932](https://doi.org/10.1002/cncr.30932).

The content of this manuscript does not necessarily reflect the views or policies of the NIH, authors' affiliated institutions, or any of the collaborating centers of the CCFR, nor does mention of trade names, commercial products, or organizations imply endorsement by the US Government or the CCFR.

Conflicts of Interest: None.

Author Contributions:

Conceptualization (JMK,SAC,PAN), Data Acquisition (XH,NL,AKW,JH,JDP,PAN), Analysis/Interpretation (JMK,XH,SH,JR,SVA,SAC,AIP,PAN), Original Draft (JMK), Review/Editing (JMK,XH,SH,JR,NML,AKW,JH,JCF,JDP,PTC,SG,MC,SVA,SAC,AIP,PAN).

Precis:

Weight loss 5-years after CRC diagnosis was significantly associated with decreased subsequent long-term survival. These results suggest the importance of avoiding weight loss in CRC survivors.

Keywords: Colorectal neoplasms, body mass index, weight loss, mortality, survivors, epidemiology, follow-up studies

Accepted Article

Abstract

Background: Body weight is associated with colorectal cancer (CRC) risk and survival, but the impact of long-term post-diagnostic weight change is unclear. We investigated whether weight change over the 5 years following CRC diagnosis is associated with survival.

Methods: CRC cases diagnosed from 1997-2008 were identified through four population-based cancer registry sites. Participants enrolled within two years of diagnosis and reported their height and weight two years prior. Follow-up questionnaires were administered ~5 years after diagnosis. Associations of change in weight (kg) or body mass index (BMI) with overall and CRC-specific survival were estimated using Cox regression adjusted for age, sex, stage, baseline BMI, NSAID use, smoking, time between diagnosis and enrollment, and study site.

Results: At the five-year post-diagnostic survey, 2,049 participants reported higher (53%, median +5kg), unchanged (12%), or lower (35%, median -4kg) weight. Over a median 5.1 years (range 0.3-9.9) of subsequent follow-up, 344 participants died (91 from CRC). Long-term weight loss (per 5kg) was associated with poorer overall (Hazard Ratio [HR]: 1.13, 95% Confidence Interval [CI]: 1.07–1.21) and CRC-specific survival (HR: 1.25, 95% CI: 1.13–1.39). Significantly lower survival was similarly observed for relative weight loss (>5% vs. ≤5% change), BMI reduction (per 1 unit), or BMI category change (overweight to normal vs. remaining overweight).

Conclusions: Weight loss 5-years after CRC diagnosis was significantly associated with decreased long-term survival, suggesting the importance of avoiding weight loss in CRC survivors. Future research should attempt to evaluate this association accounting for whether this weight change was intentional, or represents a marker of declining health.

Introduction

Colorectal cancer (CRC) is the third most commonly diagnosed cancer and the fourth leading cause of cancer death worldwide [1]. Improvements in CRC screening and treatment have contributed to a growing population of CRC survivors [2]. As such, efforts to identify modifiable behaviors and risk factors associated with CRC survival are of increasing clinical [3, 4] and public health [5, 6] importance.

Body mass index (BMI) has been associated with both the risk of developing CRC [7-11] and survival after CRC diagnosis [12-16]. Most prior studies have relied upon measurements of BMI taken at a single time point either before, at, or after CRC diagnosis [14], the timing of which may be important for prognosis [12]. As weight loss is a common side-effect of CRC, longitudinal studies of weight change over time may provide a more complete picture of how body weight is associated with cancer survival.

Growing evidence suggests that weight gain is associated with increased CRC risk [17, 18]. Fewer studies have evaluated adult weight change as it relates to CRC survival [12, 13, 19-22], but have suggested that post-diagnostic weight loss may be associated with lower survival. These studies have differed in the duration of the time interval over which weight change is measured and in the relation of timing of weight measurements to time of diagnosis, and have focused on weight change in the 6-24 month period immediately following diagnosis. To our knowledge, no study has investigated long-term post-diagnostic weight change as it relates to CRC survival.

We investigated whether long-term weight change, rather than absolute weight/BMI, in the five-year period following CRC diagnosis is associated with long-term survival.

Methods

Study participants

The Colon Cancer Family Registry (CCFR) is an international consortium focused on CRC research [23, 24]. This study included data from four population-based CCFR study sites: Cancer Care Ontario/Lunenfeld-Tanenbaum Research Institute (Toronto, Ontario, Canada), Fred Hutchinson Cancer Research Center (Seattle, Washington, USA), Mayo Clinic (Rochester, Minnesota, USA), and University of Melbourne (Melbourne, Victoria, Australia).

Details of the CCFR have been previously described [13, 24-28], and are available online [23]. Briefly, incident CRC cases diagnosed from 1997-2008 were identified through population-based cancer registries. Enrolled participants completed questionnaires at baseline and at five-year intervals. Local study approval was provided by the institutional review boards at each study center, and all participants provided written informed consent.

Only participants who completed both the baseline and the 5-year post-diagnosis follow-up questionnaire were included in this analysis. Of these 3,001 cases, we excluded those: whose baseline survey was completed >2 years after diagnosis (n=283), whose follow-up survey was completed >6 years after enrollment (n=245), those with <3 months of follow-up time after the follow-up survey (n=410), and participants with missing information on weight (n=212), height (n=16), smoking status (n=8) or NSAID use (n=48). Thus, data on 2,049 participants remained for analyses.

Data collection

Participants completed a structured telephone interview or self-administered questionnaire at a median 9 months (range 0-24 months) after diagnosis (Figure 1) in which they self-reported demographic, epidemiologic, and dietary characteristics two years prior. These responses thus correspond to participant characteristics at a median of 15.0 months (range 1-24 months) before diagnosis. Participants were actively followed via periodic contact, and completed follow-up questionnaires a median 4.9 years (range 3.5-6.0 years) after enrollment (i.e., median 5.9 years after CRC diagnosis).

Cancer stage at diagnosis was derived from information on TNM stage and SEER summary stage into American Joint Committee on Cancer (AJCC) stages I-IV [29]. Follow-up for vital status and cause of death was completed through periodic linkage to population-based registries, contact with relatives, and the collection of death certificates. Vital status information was available through June 2014. ICD-10 codes retrieved from death records were used to classify whether deaths were due to CRC (C18.0, C18.2-C20.9, or C26.0) or any other cause [30].

Data definitions and statistical analyses

Participants self-reported height and weight at baseline (weight 2 years prior) and 5-year follow-up (current weight) [24]. Change in weight was calculated by subtracting weight at the 5-year follow-up

from baseline weight. Relative weight change was calculated as weight change divided by weight at baseline, multiplied by 100. Body mass index (BMI) was categorized according to WHO criteria [31] as underweight ($<18.5 \text{ kg/m}^2$), normal weight (18.5–24.9), overweight (25.0–29.9), or obese (≥ 30.0). Smoking history and non-steroidal anti-inflammatory drug (NSAID) use were defined as never/ever regular users.

Delayed-entry Cox regression models were used to estimate the Hazard Ratio (HR) and 95% Confidence Interval (95% CI) for the association between weight change and overall or CRC-specific survival. Survival time was calculated starting at the date of the 5-year follow-up survey and ending at either death or date of last follow-up. Models adjusted for the following potential confounders [32]: age at diagnosis, sex, smoking history, NSAIDs use, stage at diagnosis, days between diagnosis and baseline survey, and baseline BMI category. In order to more fully capture potential associations with survival, associations with weight change were assessed for several continuous and categorical parameterizations: linear weight change (per 5kg); linear BMI change (per 1kg/m^2); categorical weight change (gained $>2\text{kg}$, or lost $>2\text{kg}$, versus $\leq 2\text{kg}$ difference); and categorical relative weight change (gained $>5\%$, or lost $>5\%$, versus $\leq 5\%$ difference). Additional analyses examined categorical BMI change (moved into a higher BMI category, or lower BMI category, versus no change). Proportional hazards assumptions were verified by testing for a non-zero slope of the scaled Schoenfeld residuals on ranked failure times [33]. All *P*-values are two-sided, with $P < 0.05$ denoting statistical significance. Analyses were performed using Stata version 14 [34].

Results

Among the 2,049 individuals included in the analytic dataset, 344 died (91 from CRC) over a median 5.1 years of follow-up (range 0.3–9.9 years) after the 5-year follow-up survey. Participant characteristics are presented in *Table 1*, both overall and by category of relative weight change ($>5\%$ loss, $\leq 5\%$ change, or $>5\%$ gain). At follow-up, 1,090 participants (53%) had gained weight (median +5kg), 244 (12%) reported the same weight, and 715 (35%) had lost weight (median -4kg). The majority of participants (72%) were in the same BMI category at both time points (*Table 2*).

Weight loss was consistently associated with lower survival (*Table 3*). Modeled continuously, weight loss (per 5kg) after CRC diagnosis was significantly associated with lower overall (HR=1.13, 95% CI: 1.07–1.21) and CRC-specific survival (HR=1.25, 95% CI: 1.13–1.39), as was a decrease in BMI (per 1kg/m^2 ; overall HR=1.07, 95% CI: 1.03–1.11, CRC-specific HR=1.13, 95% CI: 1.06–1.20). Modeled categorically, relative weight loss of $>5\%$ (vs. $\leq 5\%$) was significantly associated with decreased overall (HR=2.58, 95% CI: 1.97–3.38) and CRC-specific survival (HR=4.31, 95% CI: 2.63–7.06), as was absolute weight loss of $>2\text{kg}$ (vs. $\leq 2\text{kg}$; overall HR=2.03, 95% CI: 1.52–2.70, CRC-specific HR=4.22, 95% CI: 2.38–7.49). Weight gain was not associated with survival.

Moving from overweight to normal BMI over the post-diagnosis period (vs. overweight at both time points) was significantly associated with lower overall (HR=3.67, 95% CI: 2.41–5.60) and CRC-specific survival (HR=6.68, 95% CI: 3.06–14.55) (*Table 4*). Moving from obese to overweight was also associated with lower overall survival (HR=1.69, 95% CI: 1.00–2.85).

Several post-hoc exploratory analyses were performed to further explore these associations. Sensitivity analyses excluding those with stage IV CRC, missing stage information, or both, did not substantially alter the results in *Table 3* or *Table 4* (*Supplementary Table 1*). In sensitivity analyses of continuous weight change stratified by BMI category at baseline, weight loss remained statistically significant among those overweight and obese at baseline for overall survival, and among those overweight at baseline for CRC-specific survival (*Supplementary Table 2*). In sensitivity analyses of categorical weight change stratified by BMI category at baseline, the associations of loss of either >5% or >2kg body weight with survival remained statistically significant among those of normal or overweight, but not obese, BMI at baseline.

Additional exploratory analyses evaluated participant sex or cancer stage at diagnosis as potential effect modifiers of the association between weight change and survival. Likelihood ratio tests of nested models containing interaction terms with weight change were not statistically significant for stage at diagnosis, but suggested a potential difference by sex for CRC-specific survival (*Supplementary Table 3*). In sex-stratified analyses, associations between weight loss and survival had larger effect sizes and remained statistically significant in males, but had reduced effect sizes and were not statistically significant in females.

Discussion

Weight loss in the ~5-year period after CRC diagnosis was significantly associated with lower overall and CRC-specific survival. This association was consistently observed whether weight loss was modeled continuously or categorically, or in relative or absolute terms. These findings support the importance of weight loss as a potential indicator of declining health in cancer survivors, even years after diagnosis.

Emerging evidence suggest a J-shaped association between body weight and CRC survival, where overweight survivors may have the lowest risk of mortality [16, 35, 36]. This relationship may vary by cancer stage, with higher BMI associated with lower survival for early-stage CRC but higher survival for later-stage CRC [15]. Meta-analyses of clinical trials suggest that underweight and obese (but not overweight) BMI may be detrimental for stage II-III CRC [37], and that lower BMI (<28kg/m²) may be detrimental for stage IV CRC [38]. The timing of weight assessment in relation to diagnosis appears important when considering prognosis, with pre-diagnostic BMI perhaps more informative for prognosis than post-diagnostic BMI [12]. Most previous research, however, has utilized static BMI measurements to evaluate the association of body weight with survival. As weight often changes over time, there is a recognized need investigating the impact of weight change in cancer survivors [3, 39, 40].

Weight loss related to CRC symptoms and treatment is common, and may negatively impact subsequent survival. Previous studies have demonstrated that weight control is important to CRC survivorship, observing lower survival with pre-diagnostic weight gain [13], pre- to post-diagnosis weight loss [12, 21], and short-term post-diagnostic weight loss [20, 22]. While an early study reported no association with short-term post-diagnostic weight change [19], a recent meta-analysis suggests that weight maintenance after diagnosis may be advantageous for cancer survivors who are overweight after diagnosis [35]. Of note, these previous studies have generally evaluated shorter time intervals for weight change after diagnosis (1-2 years), and have had near-term periods of follow-up (up to 5 years). Ours is the first study to evaluate the association of long-term (4-6 years) weight change after CRC diagnosis with subsequent long-term (>5 years) survival.

Consistent with studies of short-term weight changes, we observe that weight loss is associated with lower survival, and that weight maintenance may be beneficial even if a patient is initially overweight. Notably, these findings are in conflict with current survivorship guidelines, which recommend that patients obtain and maintain a normal weight [36, 41]. This conflict is particularly striking as our findings relate to long-term weight change 4-6 years after diagnosis, when a cancer survivor is likely moving past the period of active cancer treatment. While CRC-related issues and symptoms are most prominent during the first three years post-diagnosis, long-term effects can persist [42]. More research is needed to identify whether additional factors, such as long-term effects or metabolic dysfunction, may contribute to the observed lower survival after weight loss.

Associations of post-diagnostic weight loss with lower survival has been reported in several other cancer types [43], including breast [44, 45], endometrial [46], lung [47], prostate [48], and esophageal cancer [49]. Involuntary weight and muscle loss leading to cachexia and sarcopenia, respectively, are common in cancer patients and are indicators of poor prognosis [3, 20, 50]. Together, these results suggest the importance of avoiding weight loss after diagnosis, and may point towards weight maintenance as a prudent goal for survivors of some cancers [44]. Potential biological rationale for better survival with higher weight in cancer survivors includes extra nutritional reserves, greater muscle mass, a lower likelihood of dose-limiting toxicity, or potentially less aggressive tumors [3, 51, 52].

BMI is a crude measure of adiposity, and does not capture differences in body composition (muscle vs. fat) or fat distribution (subcutaneous vs. visceral) [53]. These differences also vary by sex, with females generally carrying proportionately more body fat and males having more central adiposity [54], which may be contributing to the differential associations of weight loss and survival observed in the sex-stratified exploratory analyses. Body habitus is also likely influenced by many factors that change over time, both lifestyle (caloric intake, diet, physical activity, etc.) and medical (access to medical care, treatments, co-morbidities, adverse events, and late effects). As such, it is difficult to determine the proportional contribution of weight change on long-term survival. We are unable to determine whether the weight loss reported in our study was intentional (e.g., through diet and/or exercise) or unintentional (e.g., cachexia or sarcopenia). Given that unintentional weight loss likely relates to treatment effects or disease progression/recurrence, and could be a general marker of declining health, this limitation should be considered before encouraging clinical implementation of our findings.

We were unable to evaluate how diet and exercise may have contributed to energy balance and weight change. Exercise may be particularly important in cancer survivors, as weight loss independent of exercise may promote sarcopenia or loss of lean mass [36, 55] and increased physical activity after CRC diagnosis is associated with improved survival [56, 57]. Guidelines for weight management in adults recommend a three-pronged approach of dietary energy restriction, regular physical activity, and behavioral modification [58]. Additional investigation is needed to identify how these factors influence weight change in CRC survivors, and to determine how sarcopenia or cachexia may be involved in the observed association with survival.

This study has several limitations. Our results are based on long-term changes in weight among participants who survived ≥ 5 years after their diagnosis. This inherent survival bias meant that our sample comprised proportionately more participants who were younger, had an early-stage cancer at diagnosis, and likely had fewer comorbidities, potentially limiting the generalizability of these findings.

Another limitation is that body weight was self-reported at each time point, perhaps resulting in measurement error with regard to weight change. However, questionnaire-based body weight recall tends to be fairly accurate [59]. Participants are also likely to have internal consistency in their reporting, such that change in weight may be less prone to such bias than individual weight measurements. Finally, participants may have undergone large fluctuations in weight during the post-diagnosis period that would not have been captured by our surveys. Although we included established and suspected factors that might confound the relationship under study, there may nonetheless be other unmeasured confounding factors influencing these findings, such as participants' area of residence or access to treatment [60]. Future studies with longer and more frequent follow-up of participants who develop CRC are needed to evaluate how the pace, trajectory, or pattern of weight change may affect the association of body weight with CRC survival.

Our study has several strengths that improve confidence in our results. These include a large sample size, long follow-up time, well-characterized outcomes, and detailed information on both the primary exposure and potential confounders. Another major strength is the population-based design, which allows for an estimate of the association between weight change and CRC survival that is more likely to be generalizable. These findings are also consistent with findings from shorter-term studies, and warrant replication and exploration in larger and more frequently-characterized study populations. Exploratory analyses suggesting that these associations may be particularly relevant for males and those who are overweight at diagnosis also warrant future investigation.

Conclusion

These findings suggest the importance of avoiding weight loss among long-term CRC survivors, even among those who are overweight or obese. This conflicts with current recommendations to achieve and maintain a normal weight. Patients and physicians should be aware of the potential decreased survival among those with weight loss after CRC, even many years after diagnosis. Additional research is warranted to evaluate the additional contribution of diet, physical activity, and body composition for CRC survival within the context of weight change following diagnosis.

References

1. Ferlay J, Soerjomataram I, Ervik M, et al. *GLOBOCAN 2012 v1.0, Cancer Incidence and Mortality Worldwide: IARC CancerBase No. 11 [Internet]*. <http://globocan.iarc.fr>.
2. de Moor JS, Mariotto AB, Parry C, et al. Cancer survivors in the United States: prevalence across the survivorship trajectory and implications for care. *Cancer Epidemiol Biomarkers Prev* 2013;22(4):561-70.
3. Brown JC, Meyerhardt JA. Obesity and Energy Balance in GI Cancer. *J Clin Oncol* 2016;34(35):4217-4224.
4. Goodwin PJ, Chlebowski RT. Obesity and Cancer: Insights for Clinicians. *J Clin Oncol* 2016;34(35):4197-4202.
5. Vijayvergia N, Denlinger CS. Lifestyle Factors in Cancer Survivorship: Where We Are and Where We Are Headed. *J Pers Med* 2015;5(3):243-63.
6. Smith JL, Pollack LA, Rodriguez JL, et al. Assessment of the status of a National Action Plan for Cancer Survivorship in the USA. *J Cancer Surviv* 2013;7(3):425-38.
7. Bardou M, Barkun AN, Martel M. Obesity and colorectal cancer. *Gut* 2013;62(6):933-47.
8. *World Cancer Research Fund / American Institute for Cancer Research. Food, Nutrition, Physical Activity, and the Prevention of Cancer: a Global Perspective. Washington DC: AICR, 2007.*
9. Campbell PT, Jacobs ET, Ulrich CM, et al. Case-control study of overweight, obesity, and colorectal cancer risk, overall and by tumor microsatellite instability status. *J Natl Cancer Inst* 2010;102(6):391-400.
10. Win AK, Dowty JG, English DR, et al. Body mass index in early adulthood and colorectal cancer risk for carriers and non-carriers of germline mutations in DNA mismatch repair genes. *Br J Cancer* 2011;105(1):162-9.
11. Campbell PT, Cotterchio M, Dicks E, et al. Excess body weight and colorectal cancer risk in Canada: associations in subgroups of clinically defined familial risk of cancer. *Cancer Epidemiol Biomarkers Prev* 2007;16(9):1735-44.
12. Campbell PT, Newton CC, Dehal AN, et al. Impact of body mass index on survival after colorectal cancer diagnosis: the Cancer Prevention Study-II Nutrition Cohort. *J Clin Oncol* 2012;30(1):42-52.
13. Campbell PT, Newton CC, Newcomb PA, et al. Association between body mass index and mortality for colorectal cancer survivors: overall and by tumor molecular phenotype. *Cancer Epidemiol Biomarkers Prev* 2015;24(8):1229-38.
14. Parkin E, O'Reilly DA, Sherlock DJ, et al. Excess adiposity and survival in patients with colorectal cancer: a systematic review. *Obes Rev* 2014;15(5):434-51.
15. Kocarnik JM, Chan AT, Slattery ML, et al. Relationship of pre-diagnostic body mass index with survival after colorectal cancer: Stage-specific associations. *Int J Cancer* 2016;139(5):1065-72.
16. Kroenke CH, Neugebauer R, Meyerhardt J, et al. Analysis of Body Mass Index and Mortality in Patients With Colorectal Cancer Using Causal Diagrams. *JAMA Oncol* 2016; 10.1001/jamaoncol.2016.0732.
17. Karahalios A, English DR, Simpson JA. Weight change and risk of colorectal cancer: a systematic review and meta-analysis. *Am J Epidemiol* 2015;181(11):832-45.
18. Keum N, Greenwood DC, Lee DH, et al. Adult weight gain and adiposity-related cancers: a dose-response meta-analysis of prospective observational studies. *J Natl Cancer Inst* 2015;107(2).
19. Meyerhardt JA, Niedzwiecki D, Hollis D, et al. Impact of body mass index and weight change after treatment on cancer recurrence and survival in patients with stage III colon cancer: findings from Cancer and Leukemia Group B 89803. *J Clin Oncol* 2008;26(25):4109-15.

20. Meyerhardt JA, Kroenke CH, Prado CM, *et al.* Association of Weight Change after Colorectal Cancer Diagnosis and Outcomes in the Kaiser Permanente Northern California Population. *Cancer Epidemiol Biomarkers Prev* 2017;26(1):30-37.
21. Baade PD, Meng X, Youl PH, *et al.* The impact of body mass index and physical activity on mortality among patients with colorectal cancer in Queensland, Australia. *Cancer Epidemiol Biomarkers Prev* 2011;20(7):1410-20.
22. Vergidis J, Gresham G, Lim HJ, *et al.* Impact of Weight Changes After the Diagnosis of Stage III Colon Cancer on Survival Outcomes. *Clin Colorectal Cancer* 2016;15(1):16-23.
23. *Colon Cancer Family Registry*. <http://www.coloncfr.org/>.
24. Newcomb PA, Baron J, Cotterchio M, *et al.* Colon Cancer Family Registry: an international resource for studies of the genetic epidemiology of colon cancer. *Cancer Epidemiol Biomarkers Prev* 2007;16(11):2331-43.
25. Newcomb PA, Zheng Y, Chia VM, *et al.* Estrogen plus progestin use, microsatellite instability, and the risk of colorectal cancer in women. *Cancer Res* 2007;67(15):7534-9.
26. Phipps AI, Baron J, Newcomb PA. Prediagnostic smoking history, alcohol consumption, and colorectal cancer survival: the Seattle Colon Cancer Family Registry. *Cancer* 2011;117(21):4948-57.
27. Hardikar S, Newcomb PA, Campbell PT, *et al.* Prediagnostic Physical Activity and Colorectal Cancer Survival: Overall and Stratified by Tumor Characteristics. *Cancer Epidemiol Biomarkers Prev* 2015;24(7):1130-7.
28. Phipps AI, Robinson JR, Campbell PT, *et al.* Prediagnostic alcohol consumption and colorectal cancer survival: The Colon Cancer Family Registry. *Cancer* 2016; 10.1002/cncr.30446.
29. Edge S, Byrd D, Compton C, *et al.* *AJCC cancer staging manual*. 7th ed. New York, NY: Springer; 2010.
30. WHO. *International classification of diseases*. 10th ed. Geneva, Switzerland: World Health Organization; 2010.
31. Physical status: the use and interpretation of anthropometry. Report of a WHO Expert Committee. *World Health Organ Tech Rep Ser* 1995;854:1-452.
32. Kuipers EJ, Grady WM, Lieberman D, *et al.* Colorectal cancer. *Nat Rev Dis Primers* 2015;1:15065.
33. Hosmer DW, Lemeshow S, May S. *Applied survival analysis: Regression modeling of time-to-event data*. 2nd ed. Hoboken, New Jersey: John Wiley & Sons; 2008.
34. StataCorp. *Stata Statistical Software: Release 14*. In. College Station, TX: StataCorp LP; 2015.
35. Wu S, Liu J, Wang X, *et al.* Association of obesity and overweight with overall survival in colorectal cancer patients: a meta-analysis of 29 studies. *Cancer Causes Control* 2014;25(11):1489-502.
36. Demark-Wahnefried W, Rogers LQ, Alfano CM, *et al.* Practical clinical interventions for diet, physical activity, and weight control in cancer survivors. *CA Cancer J Clin* 2015;65(3):167-89.
37. Sinicrope FA, Foster NR, Yothers G, *et al.* Body mass index at diagnosis and survival among colon cancer patients enrolled in clinical trials of adjuvant chemotherapy. *Cancer* 2013;119(8):1528-36.
38. Renfro LA, Grothey A, Kerr D, *et al.* Survival following early-stage colon cancer: an ACCENT-based comparison of patients versus a matched international general populationdagger. *Ann Oncol* 2015;26(5):950-8.
39. Ligibel JA, Alfano CM, Hershman D, *et al.* Recommendations for Obesity Clinical Trials in Cancer Survivors: American Society of Clinical Oncology Statement. *J Clin Oncol* 2015;33(33):3961-7.
40. Ligibel JA, Wollins D. American Society of Clinical Oncology Obesity Initiative: Rationale, Progress, and Future Directions. *J Clin Oncol* 2016;34(35):4256-4260.
41. Denlinger CS, Ligibel JA, Are M, *et al.* Survivorship: nutrition and weight management, Version 2.2014. Clinical practice guidelines in oncology. *J Natl Compr Canc Netw* 2014;12(10):1396-406.

42. Denlinger CS, Barsevick AM. The challenges of colorectal cancer survivorship. *J Natl Compr Canc Netw* 2009;7(8):883-93; quiz 894.
43. Greenlee H, Unger JM, LeBlanc M, *et al.* Association between Body Mass Index and Cancer Survival in a Pooled Analysis of 22 Clinical Trials. *Cancer Epidemiol Biomarkers Prev* 2017;26(1):21-29.
44. Caan BJ, Kwan ML, Shu XO, *et al.* Weight change and survival after breast cancer in the after breast cancer pooling project. *Cancer Epidemiol Biomarkers Prev* 2012;21(8):1260-71.
45. Cespedes Feliciano EM, Kroenke CH, Bradshaw PT, *et al.* Postdiagnosis Weight Change and Survival Following a Diagnosis of Early-Stage Breast Cancer. *Cancer Epidemiol Biomarkers Prev* 2017;26(1):44-50.
46. Matsuo K, Moeini A, Cahoon SS, *et al.* Weight Change Pattern and Survival Outcome of Women with Endometrial Cancer. *Ann Surg Oncol* 2016; 10.1245/s10434-016-5237-9.
47. Ross PJ, Ashley S, Norton A, *et al.* Do patients with weight loss have a worse outcome when undergoing chemotherapy for lung cancers? *Br J Cancer* 2004;90(10):1905-11.
48. Bonn SE, Wiklund F, Sjolander A, *et al.* Body mass index and weight change in men with prostate cancer: progression and mortality. *Cancer Causes Control* 2014;25(8):933-43.
49. Anandavadivelan P, Lagergren P. Cachexia in patients with oesophageal cancer. *Nat Rev Clin Oncol* 2016;13(3):185-98.
50. Fearon K, Strasser F, Anker SD, *et al.* Definition and classification of cancer cachexia: an international consensus. *Lancet Oncol* 2011;12(5):489-95.
51. Caan BJ, Kroenke CH. Next Steps in Understanding the Obesity Paradox in Cancer. *Cancer Epidemiol Biomarkers Prev* 2017;26(1):12.
52. Strulov Shachar S, Williams GR. The Obesity Paradox in Cancer-Moving Beyond BMI. *Cancer Epidemiol Biomarkers Prev* 2017;26(1):13-16.
53. Rothman KJ. BMI-related errors in the measurement of obesity. *Int J Obes (Lond)* 2008;32 Suppl 3:S56-9.
54. Karastergiou K, Smith SR, Greenberg AS, *et al.* Sex differences in human adipose tissues - the biology of pear shape. *Biol Sex Differ* 2012;3(1):13.
55. Weinheimer EM, Sands LP, Campbell WW. A systematic review of the separate and combined effects of energy restriction and exercise on fat-free mass in middle-aged and older adults: implications for sarcopenic obesity. *Nutr Rev* 2010;68(7):375-88.
56. Campbell PT, Patel AV, Newton CC, *et al.* Associations of recreational physical activity and leisure time spent sitting with colorectal cancer survival. *J Clin Oncol* 2013;31(7):876-85.
57. Je Y, Jeon JY, Giovannucci EL, *et al.* Association between physical activity and mortality in colorectal cancer: a meta-analysis of prospective cohort studies. *Int J Cancer* 2013;133(8):1905-13.
58. Jensen MD, Ryan DH, Apovian CM, *et al.* 2013 AHA/ACC/TOS guideline for the management of overweight and obesity in adults: a report of the American College of Cardiology/American Heart Association Task Force on Practice Guidelines and The Obesity Society. *Circulation* 2014;129(25 Suppl 2):S102-38.
59. Olivarius NF, Andreasen AH, Loken J. Accuracy of 1-, 5- and 10-year body weight recall given in a standard questionnaire. *Int J Obes Relat Metab Disord* 1997;21(1):67-71.
60. Sankaranarayanan J, Qiu F, Watanabe-Galloway S. A registry study of the association of patient's residence and age with colorectal cancer survival. *Expert Rev Pharmacoecon Outcomes Res* 2014;14(2):301-13.

Figure Legend:

Figure 1 - Study timeline, representing relative timing of diagnosis, baseline survey, follow-up survey, and subsequent follow-up for survival outcomes.

Accepted Article

Table 1 – Study population characteristics.

Categories	Total		Lost weight (> 5%)		Maintained weight (≤ 5% change)		Gained weight (> 5%)	
	n	(%)	n	(%)	n	(%)	n	(%)
Participants, Total and by site, n (%)	2,049		386	19	985	48	678	33
Cancer Care Ontario	499	24%	99	20	232	46	168	34
Fred Hutchinson Cancer Research Center	962	47%	188	20	425	47	322	33
Mayo Clinic	246	13%	42	17	135	55	69	28
University of Melbourne	347	17%	57	17	166	49	119	35
Deaths, n (%)	344	17%	117	30	139	14	88	13
CRC deaths, n (%)	91	4%	40	10	31	3	20	3
Years between diagnosis and baseline survey, mean (SD)	0.8	0.4	0.9	0.4	0.9	0.4	0.8	0.4
Years between baseline and follow-up surveys, mean (SD)	5.0	0.5	5.0	0.5	5.0	0.5	5.0	0.5
Years of follow-up from diagnosis, mean (SD)	10.4	2.1	10.0	2.2	10.6	2.0	10.4	2.1
Years of follow-up from 5-year survey, mean (SD)	4.6	1.9	4.2	2.0	4.7	1.8	4.6	1.9
Age at diagnosis (years), mean (SD)	54.8	11.1	57.2	11.2	55.6	10.9	52.2	10.9
Sex (Female), n (%)	1,028	50%	193	50	451	46	384	57
Baseline weight (kg), mean (SD)	80.1	18.6	87.1	20.8	79.5	17.2	76.9	18.3
Follow-up weight (kg), mean (SD)	81.7	19.5	76.4	18.5	79.6	17.2	87.6	21.6
Weight change (kg), mean (SD)	1.6	9.7	-10.7	7.6	0.2	2.2	10.7	8.6
Height (cm), mean (SD)	170.1	10.0	170.3	10.2	171.2	9.8	169.7	10.0
Baseline BMI (kg/m ²), mean (SD)	27.4	5.4	29.9	6.1	27.0	4.9	26.5	5.2
Follow-up BMI (kg/m ²), mean (SD)	28.0	5.8	26.2	5.3	27.1	4.9	30.3	6.4
BMI change (kg/m ²), mean (SD)	0.6	3.4	-3.7	2.6	0.1	0.8	3.8	3.1
Cancer stage at diagnosis, n (%)								
I	571	28%	98	25	308	31	165	24
II	565	28%	118	31	256	26	191	28
III	415	20%	67	17	204	21	144	21
IV	130	6%	26	7	68	7	36	5
Missing	368	18%	77	20	149	15	142	21
Smoking history, n (%)								
Never	928	45%	164	42	460	47	304	45
Ever	1,121	55%	222	58	525	53	374	55
NSAID use, n (%)								
Never	1,187	58%	224	58	559	57	404	60
Ever	862	42%	162	42	426	43	274	40

Table 2 - Participant BMI category over time.

		BMI (follow-up) *				Total
		Underweight	Normal	Overweight	Obese	
BMI (baseline)	Underweight	9	16	1	3	29
	Normal	15	514	169	15	713
	Overweight	3	110	531	147	791
	Obese	1	9	84	422	516
Total		28	649	785	587	2,049

* Shading refers to cases that moved to a higher (red) or lower (green) BMI category from baseline to follow-up.

Accepted Article

Table 3 - Association of long-term changes in weight or BMI with overall and CRC-specific survival, modeled continuously or categorically.

	Overall mortality				CRC-specific mortality			
	n(deaths)	HR*†	95% CI	p-value	n(deaths)	HR*	95% CI	p-value
Per 5kg loss	2049(344)	1.13	1.07–1.21	<0.001	2049(91)	1.25	1.13–1.39	<0.001
Per 1kg/m ² loss	2049(344)	1.07	1.03–1.11	<0.001	2049(91)	1.13	1.06–1.20	<0.001
Gain >5%	678(88)	1.01	0.76–1.35	0.95	678(20)	0.9	0.51–1.60	0.73
Same (+/-5%)	985(139)	Ref.			985(31)	Ref.		
Loss >5%	386(117)	2.58	1.97–3.38	<0.001	386(40)	4.31	2.63–7.06	<0.001
Gain >2kg	821(114)	1.11	0.83–1.48	0.50	821(27)	1.22	0.67–2.24	0.52
Same (+/-2kg)	711(92)	Ref.			711(18)	Ref.		
Loss >2kg	517(138)	2.03	1.52–2.70	<0.001	517(46)	4.22	2.38–7.49	<0.001

*Adjusted for age at diagnosis, sex, smoking history, NSAID use, stage at diagnosis, time from diagnosis to baseline survey, baseline BMI category, and study.

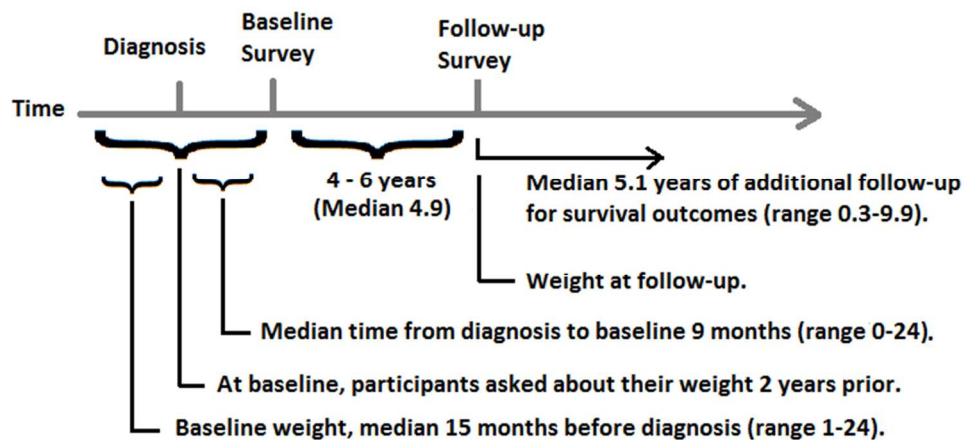
†Stratified by age at diagnosis (proportional hazards violation).

Table 4 - Association of long-term BMI category change with long-term overall and CRC-specific survival.

	Overall mortality				CRC-specific mortality			
	n(deaths)	HR*	95% CI	p-value	n(deaths)	HR*	95% CI	p-value
Normal to Obese	15(4)	†			15(1)	†		
Normal to Overweight	169(15)	0.84	0.47–1.53	0.58	169(6)	0.84	0.31–2.26	0.73
Maintained Normal	514(75)	Ref.			514(19)	Ref.		
Normal to Underweight	15(5)	2.23	0.87–5.71	0.09	15(2)	†		
Overweight to Obese	147(16)	0.88	0.50–1.55	0.65	147(2)	†		
Maintained Overweight	531(76)	Ref.			531(17)	Ref.		
Overweight to Normal	110(41)	3.67	2.41–5.60	< 0.001	110(15)	6.68	3.06–14.55	<0.001
Overweight to Underweight	3(0)	†			3(0)	†		
Maintained Obese	422(75)	Ref.			422(18)	Ref.		
Obese to Overweight	84(22)	1.69	1.00–2.85	0.049	84(6)	1.86	0.67–5.18	0.24
Obese to Normal	9(3)	†			9(2)	†		
Obese to Underweight	1(0)	†			1(0)	†		

*Adjusted for age at diagnosis, sex, smoking history, NSAID use, stage at diagnosis, time from diagnosis to baseline survey, baseline BMI, and study.

†Estimate not reported due to <5 events.



Study timeline, representing relative timing of diagnosis, baseline survey, follow-up survey, and subsequent follow-up for survival outcomes

62x30mm (300 x 300 DPI)

Accepted

Supplementary Table 1 - Sensitivity analysis excluding those with stage IV and/or missing stage information

Table 3a - Association of long-term changes in weight or BMI with overall and CRC-survival, modeled continuously or categorically.

		Overall mortality				CRC-specific mortality			
		n (deaths)	HR * †	95% CI	p-value	n (deaths)	HR *	95% CI	p-value
Per 5 kg loss	Total	2049 (344)	1.13	1.07 - 1.21	< 0.001	2049 (91)	1.25	1.13 - 1.39	< 0.001
	Exclude missing stage	1681 (303)	1.13	1.06 - 1.21	< 0.001	1681 (82)	1.25	1.12 - 1.40	< 0.001
	Exclude stage IV	1919 (315)	1.12	1.05 - 1.19	0.001	1919 (75)	1.22	1.08 - 1.37	0.001
	Exclude missing and stage IV	1551 (274)	1.11	1.03 - 1.19	0.004	1551 (66)	1.21	1.07 - 1.38	0.003
Per 1 BMI unit loss	Total	2049 (344)	1.07	1.03 - 1.11	< 0.001	2049 (91)	1.13	1.06 - 1.20	< 0.001
	Exclude missing stage	1681 (303)	1.07	1.03 - 1.11	0.001	1681 (82)	1.13	1.06 - 1.20	< 0.001
	Exclude stage IV	1919 (315)	1.07	1.03 - 1.11	0.001	1919 (75)	1.12	1.04 - 1.20	0.003
	Exclude missing and stage IV	1551 (274)	1.06	1.02 - 1.11	0.003	1551 (66)	1.11	1.03 - 1.20	0.006
Gain > 5%	Total	678 (88)	1.01	0.76 - 1.35	0.95	678 (20)	0.90	0.51 - 1.60	0.73
	Exclude missing stage	536 (76)	0.98	0.72 - 1.33	0.89	536 (18)	0.89	0.48 - 1.63	0.71
	Exclude stage IV	642 (84)	1.04	0.77 - 1.40	0.81	642 (18)	0.95	0.52 - 1.75	0.87
	Exclude missing and stage IV	500 (72)	1.00	0.73 - 1.38	1.00	500 (16)	0.97	0.50 - 1.85	0.91
Same (+/- 5%)	Total	985 (139)	Ref.	.	.	985 (31)	Ref.	.	.
	Exclude missing stage	836 (126)	Ref.	.	.	836 (28)	Ref.	.	.
	Exclude stage IV	917 (128)	Ref.	.	.	917 (26)	Ref.	.	.
	Exclude missing and stage IV	768 (115)	Ref.	.	.	768 (23)	Ref.	.	.
Loss > 5%	Total	386 (117)	2.58	1.97 - 3.38	< 0.001	386 (40)	4.31	2.63 - 7.06	< 0.001
	Exclude missing stage	309 (101)	2.66	1.99 - 3.54	< 0.001	309 (36)	4.66	2.77 - 7.85	< 0.001
	Exclude stage IV	360 (103)	2.42	1.82 - 3.21	< 0.001	360 (31)	3.69	2.13 - 6.38	< 0.001
	Exclude missing and stage IV	283 (87)	2.46	1.81 - 3.34	< 0.001	283 (27)	4.01	2.23 - 7.20	< 0.001
Gain > 2 kg	Total	821 (114)	1.11	0.83 - 1.48	0.50	821 (27)	1.22	0.67 - 2.24	0.52
	Exclude missing stage	652 (99)	1.13	0.83 - 1.54	0.45	652 (23)	1.12	0.59 - 2.11	0.73
	Exclude stage IV	774 (108)	1.11	0.82 - 1.50	0.51	774 (24)	1.22	0.64 - 2.32	0.54
	Exclude missing and stage IV	605 (93)	1.12	0.81 - 1.54	0.51	605 (20)	1.13	0.57 - 2.23	0.72
Same (+/- 2 kg)	Total	711 (92)	Ref.	.	.	711 (18)	Ref.	.	.
	Exclude missing stage	608 (84)	Ref.	.	.	608 (17)	Ref.	.	.
	Exclude stage IV	917 (128)	Ref.	.	.	665 (16)	Ref.	.	.
	Exclude missing and stage IV	562 (78)	Ref.	.	.	562 (15)	Ref.	.	.
Loss > 2 kg	Total	517 (138)	2.03	1.52 - 2.70	< 0.001	517 (46)	4.22	2.38 - 7.49	< 0.001
	Exclude missing stage	421 (120)	2.20	1.62 - 2.99	< 0.001	421 (42)	4.46	2.46 - 8.09	< 0.001
	Exclude stage IV	360 (103)	1.85	1.37 - 2.50	< 0.001	480 (35)	3.38	1.82 - 6.27	< 0.001
	Exclude missing and stage IV	384 (103)	1.98	0.47 - 0.82	< 0.001	384 (31)	3.54	1.85 - 6.77	< 0.001

Table 4a - Association of moving to another BMI category over the post-diagnosis period with long-term overall and CRC-specific survival.

		Overall mortality				CRC-specific mortality			
		n (deaths)	HR*	95% CI	p-value	n (deaths)	HR *	95% CI	p-value
Normal to Obese	Total	15 (4)	†	.	.	15 (1)	†	.	.
	Exclude missing stage	11 (4)	†	.	.	11 (1)	†	.	.
	Exclude stage IV	13 (2)	†	.	.	13 (0)	†	.	.
	Exclude missing and stage IV	9 (2)	†	.	.	9 (0)	†	.	.
Normal to Overweight	Total	169 (15)	0.84	0.47 - 1.53	0.58	169 (6)	0.84	0.31 - 2.26	0.73
	Exclude missing stage	130 (10)	0.72	0.36 - 1.46	0.37	130 (5)	0.87	0.30 - 2.56	0.80
	Exclude stage IV	157 (15)	0.88	0.48 - 1.61	0.69	157 (6)	0.82	0.30 - 2.27	0.71
	Exclude missing and stage IV	118 (10)	0.78	0.38 - 1.59	0.49	118 (5)	0.88	0.29 - 2.67	0.83
Maintained Normal BMI	Total	514 (75)	Ref.	.	.	514 (19)	Ref.	.	.
	Exclude missing stage	420 (64)	Ref.	.	.	420 (16)	Ref.	.	.
	Exclude stage IV	478 (66)	Ref.	.	.	478 (16)	Ref.	.	.
	Exclude missing and stage IV	384 (55)	Ref.	.	.	384 (13)	Ref.	.	.
Normal to Underweight	Total	15 (5)	2.23	0.87 - 5.71	0.09	15 (2)	†	.	.
	Exclude missing stage	14 (5)	1.99	0.77 - 5.12	0.15	14 (2)	†	.	.
	Exclude stage IV	11 (4)	2.78	0.95 - 8.14	0.06	11 (1)	†	.	.
	Exclude missing and stage IV	10 (4)	2.40	0.81 - 7.09	0.11	10 (1)	†	.	.
Overweight to Obese	Total	147 (16)	0.88	0.50 - 1.55	0.65	147 (2)	†	.	.
	Exclude missing stage	122 (14)	0.80	0.44 - 1.46	0.47	122 (2)	†	.	.
	Exclude stage IV	143 (16)	0.93	0.52 - 1.64	0.79	143 (2)	†	.	.
	Exclude missing and stage IV	118 (14)	0.84	0.46 - 1.54	0.56	118 (2)	†	.	.
Maintained Overweight BMI	Total	531 (76)	Ref.	.	.	531 (17)	Ref.	.	.
	Exclude missing stage	449 (71)	Ref.	.	.	449 (17)	Ref.	.	.
	Exclude stage IV	500 (73)	Ref.	.	.	500 (14)	Ref.	.	.
	Exclude missing and stage IV	418 (68)	Ref.	.	.	418 (14)	Ref.	.	.
Overweight to Normal	Total	110 (41)	3.67	2.41 - 5.60	< 0.001	110 (15)	6.68	3.06 - 14.55	< 0.001
	Exclude missing stage	85 (37)	4.03	2.59 - 6.28	< 0.001	85 (14)	6.41	2.90 - 14.20	< 0.001
	Exclude stage IV	102 (35)	3.13	2.00 - 4.89	< 0.001	102 (12)	7.32	3.03 - 17.66	< 0.001
	Exclude missing and stage IV	77 (31)	3.44	2.14 - 5.51	< 0.001	77 (11)	7.06	2.86 - 17.45	< 0.001
Overweight to Underweight	Total	3 (0)	†	.	.	3 (0)	†	.	.
	Exclude missing stage	0 (0)	†	.	.	0 (0)	†	.	.
	Exclude stage IV	0 (0)	†	.	.	0 (0)	†	.	.
	Exclude missing and stage IV	0 (0)	†	.	.	0 (0)	†	.	.
Maintained Obese BMI	Total	422 (75)	Ref.	.	.	422 (18)	Ref.	.	.
	Exclude missing stage	350 (67)	Ref.	.	.	350 (15)	Ref.	.	.
	Exclude stage IV	398 (69)	Ref.	.	.	398 (15)	Ref.	.	.
	Exclude missing and stage IV	326 (61)	Ref.	.	.	326 (12)	Ref.	.	.
Obese to Overweight	Total	84 (22)	1.69	1.00 - 2.85	0.049	84 (6)	1.86	0.67 - 5.18	0.24
	Exclude missing stage	71 (19)	1.68	0.96 - 2.95	0.07	71 (6)	2.93	0.99 - 8.67	0.052
	Exclude stage IV	78 (21)	1.66	0.97 - 2.95	0.06	78 (5)	1.95	0.64 - 5.94	0.24
	Exclude missing and stage IV	65 (18)	1.66	0.92 - 2.97	0.09	65 (5)	3.30	1.01 - 1.78	0.048
Obese to Normal	Total	9 (3)	†	.	.	9 (2)	†	.	.
	Exclude missing stage	5 (1)	†	.	.	5 (1)	†	.	.
	Exclude stage IV	9 (3)	†	.	.	9 (2)	†	.	.
	Exclude missing and stage IV	5 (1)	†	.	.	5 (1)	†	.	.
Obese to Underweight	Total	1 (0)	†	.	.	1 (0)	†	.	.
	Exclude missing stage	0 (0)	†	.	.	0 (0)	†	.	.
	Exclude stage IV	0 (0)	†	.	.	0 (0)	†	.	.
	Exclude missing and stage IV	0 (0)	†	.	.	0 (0)	†	.	.

Supplementary Table 2 - Sensitivity analysis stratifying by BMI category at baseline.

Table 3b - Association of long-term changes in weight or BMI with overall and CRC-survival, modeled continuously or categorically, stratified by BMI at baseline.

		Overall mortality				CRC-specific mortality			
		n (deaths)	HR * †	95% CI	p-value	n (deaths)	HR *	95% CI	p-value
Per 5 kg loss	Total	2049 (344)	1.13	1.07 - 1.21	< 0.001	2049 (91)	1.25	1.13 - 1.39	< 0.001
	Normal	713 (99)	1.00	0.84 - 1.19	0.98	713 (28)	1.23	0.87 - 1.73	0.24
	Overweight	791 (133)	1.31	1.16 - 1.49	< 0.001	791 (34)	1.56	1.29 - 1.87	< 0.001
	Obese	513 (100)	1.11	1.01 - 1.21	0.02	516 (26)	1.15	1.00 - 1.33	0.053
Per 1 BMI unit loss	Total	2049 (344)	1.07	1.03 - 1.11	< 0.001	2049 (91)	1.13	1.06 - 1.20	< 0.001
	Normal	719 (99)	0.99	0.90 - 1.08	0.74	713 (28)	1.08	0.90 - 1.31	0.41
	Overweight	791 (133)	1.18	1.09 - 1.26	< 0.001	791 (34)	1.30	1.17 - 1.45	< 0.001
	Obese	516 (100)	1.06	1.01 - 1.12	0.02	516 (26)	1.08	0.99 - 1.18	0.07
Gain > 5%	Total	678 (88)	1.01	0.76 - 1.35	0.95	678 (20)	0.90	0.51 - 1.60	0.73
	Normal	274 (26)	0.97	0.57 - 1.67	0.92	274 (8)	0.97	0.37 - 2.53	0.95
	Overweight	242 (32)	1.57	0.95 - 2.62	0.08	242 (5)	0.71	0.24 - 2.10	0.53
	Obese	144 (21)	0.77	0.41 - 1.42	0.40	144 (4)	0.61	0.18 - 2.01	0.41
Same (+/- 5%)	Total	985 (139)	Ref.	.	.	985 (31)	Ref.	.	.
	Normal	362 (48)	Ref.	.	.	362 (11)	Ref.	.	.
	Overweight	405 (48)	Ref.	.	.	281 (6)	Ref.	.	.
	Obese	209 (40)	Ref.	.	.	209 (9)	Ref.	.	.
Loss > 5%	Total	386 (117)	2.58	1.97 - 3.38	< 0.001	386 (40)	4.31	2.63 - 7.06	< 0.001
	Normal	77 (25)	2.78	1.53 - 5.06	0.001	77 (9)	5.13	2.03 - 12.93	0.001
	Overweight	144 (53)	4.85	3.06 - 7.68	< 0.001	144 (18)	6.98	3.16 - 15.45	< 0.001
	Obese	163 (39)	1.44	0.88 - 2.36	0.14	163 (13)	1.92	0.81 - 4.57	0.14
Gain > 2 kg	Total	821 (114)	1.11	0.83 - 1.48	0.50	821 (27)	1.22	0.67 - 2.24	0.52
	Normal	303 (29)	0.97	0.57 - 1.66	0.91	303 (9)	0.94	0.36 - 2.49	0.90
	Overweight	307 (41)	1.40	0.83 - 2.35	0.21	307 (7)	0.86	0.28 - 2.62	0.79
	Obese	193 (35)	1.08	0.58 - 2.02	0.80	193 (8)	1.61	0.43 - 6.12	0.48
Same (+/- 2 kg)	Total	711 (92)	Ref.	.	.	711 (18)	Ref.	.	.
	Normal	312 (40)	Ref.	.	.	312 (9)	Ref.	.	.
	Overweight	281 (29)	Ref.	.	.	281 (6)	Ref.	.	.
	Obese	109 (20)	Ref.	.	.	109 (3)	Ref.	.	.
Loss > 2 kg	Total	517 (138)	2.03	1.52 - 2.70	< 0.001	517 (46)	4.22	2.38 - 7.49	< 0.001
	Normal	98 (30)	2.18	1.22 - 3.92	0.01	98 (10)	4.10	1.60 - 10.48	0.003
	Overweight	203 (63)	3.32	2.04 - 5.38	< 0.001	203 (21)	5.82	2.29 - 14.81	< 0.001
	Obese	214 (45)	1.27	0.70 - 2.31	0.44	214 (15)	2.58	0.74 - 9.01	0.14

* Adjusted for age at diagnosis, sex, smoking history, NSAID use, stage at diagnosis, time from diagnosis to baseline survey, and study.

† Models stratified by age at diagnosis due to proportional hazards violation.

Supplementary Table 3 - Sensitivity analysis of interaction with sex and stage.

Table 3c - Association of long-term changes in weight or BMI with overall and CRC-survival, modeled continuously or categorically.

		Overall mortality					Sex p-LRT	Stage p-LRT	CRC-specific mortality					Sex p-LRT	Stage p-LRT
		n (deaths)	HR * †	95% CI	p-value	n (deaths)			HR *	95% CI	p-value				
Per 5 kg loss	Total	2049 (344)	1.13	1.07 - 1.21	< 0.001	0.23	0.14	Total	2049 (91)	1.25	1.13 - 1.39	< 0.001	0.001	0.35	
	Male	1021 (204)	1.17	1.07 - 1.27	< 0.001			Male	1021 (53)	1.49	1.31 - 1.71	< 0.001			
	Female	1028 (140)	1.06	0.98 - 1.16	0.15			Female	1028 (38)	0.99	0.86 - 1.13	0.85			
Per 1 BMI unit loss	Total	2049 (344)	1.07	1.03 - 1.11	< 0.001	0.09	0.15	Total	2049 (91)	1.13	1.06 - 1.20	< 0.001	0.002	0.28	
	Male	1021 (204)	1.10	1.04 - 1.16	< 0.001			Male	1021 (53)	1.29	1.18 - 1.40	< 0.001			
	Female	1028 (140)	1.03	0.99 - 1.08	0.18			Female	1028 (38)	0.99	0.92 - 1.06	0.80			
Gain > 5%	Total	678 (88)	1.01	0.76 - 1.35	0.95	0.12	0.40	Total	678 (20)	0.90	0.51 - 1.60	0.73	0.02	0.48	
	Male	294 (49)	1.28	0.86 - 1.89	0.22			Male	294 (10)	1.07	0.47 - 2.42	0.87			
	Female	384 (39)	0.75	0.47 - 1.19	0.22			Female	384 (10)	0.69	0.30 - 1.56	0.37			
Same (+/- 5%)	Total	985 (139)	Ref.	.	.			Total	985 (31)	Ref.	.	.			
	Male	534 (84)	Ref.	.	.			Male	534 (15)	Ref.	.	.			
	Female	451 (55)	Ref.	.	.			Female	451 (16)	Ref.	.	.			
Loss > 5%	Total	386 (117)	2.58	1.97 - 3.38	< 0.001			Total	386 (40)	4.31	2.63 - 7.06	< 0.001			
	Male	193 (71)	3.16	2.19 - 4.56	< 0.001			Male	193 (28)	7.78	3.97 - 15.25	< 0.001			
	Female	193 (46)	1.85	1.19 - 2.89	0.01			Female	193 (12)	1.76	0.78 - 3.98	0.17			
Gain > 2 kg	Total	821 (114)	1.11	0.83 - 1.48	0.50	0.73	0.33	Total	821 (27)	1.22	0.67 - 2.24	0.52	0.11	0.60	
	Male	383 (65)	1.30	0.87 - 1.94	0.21			Male	383 (13)	1.24	0.51 - 3.04	0.64			
	Female	438 (49)	1.00	0.63 - 1.61	0.99			Female	438 (14)	0.99	0.43 - 2.29	0.99			
Same (+/- 2 kg)	Total	711 (92)	Ref.	.	.			Total	711 (18)	Ref.	.	.			
	Male	358 (52)	Ref.	.	.			Male	358 (8)	Ref.	.	.			
	Female	353 (40)	Ref.	.	.			Female	353 (10)	Ref.	.	.			
Loss > 2 kg	Total	517 (138)	2.03	1.52 - 2.70	< 0.001			Total	517 (46)	4.22	2.38 - 7.49	< 0.001			
	Male	280 (87)	2.25	1.54 - 3.30	< 0.001			Male	280 (32)	6.68	3.00 - 14.90	< 0.001			
	Female	237 (51)	1.91	1.18 - 3.10	0.01			Female	237 (14)	1.90	0.77 - 4.69	0.16			