

**Cardiovascular, cancer and mortality events after bariatric surgery
in people with and without pre-existing diabetes:**

A nationwide study

Running Title Bariatric surgery in diabetes

Nafeesa N DHALWANI ¹, Francesco ZACCARDI ¹, Hina WAHEED ², Jemma MYTTON ², Dimitris PAPAMARGARITIS ¹, David R WEBB ¹, Felicity EVISON ², Richard LILFORD ³, Melanie J DAVIES ^{1,4}, Kamlesh KHUNTI ¹

¹Diabetes Research Centre, University of Leicester, UK

²University Hospitals Birmingham, UK

³University of Warwick, UK

⁴Leicester Biomedical Research Centre, UK

Nafeesa N DHALWANI current address: Evidera Ltd, Metro Building, 6th Floor, 1 Butterwick, London W6 8DL

Corresponding Author:

Dr Francesco Zaccardi, PhD

Postal address: Leicester Diabetes Centre, Leicester General Hospital

Gwendolen Rd, Leicester LE5 4PW, United Kingdom

Phone: 0044 116 2584322

Fax: 0044 116 2584499

Email address: frazac@fastwebnet.it

This is the author manuscript accepted for publication and has undergone full peer review but has not been through the copyediting, typesetting, pagination and proofreading process, which may lead to differences between this version and the Version of Record. Please cite this article as doi: [10.1111/1753-0407.12851](https://doi.org/10.1111/1753-0407.12851)

ABSTRACT

Background: Bariatric surgery reduces cardiovascular events and mortality risk in obese individuals. However, it is unclear whether diabetes modified this effect. We aimed to examine mortality, cardiovascular and cancer risk following bariatric surgery in adults with and without pre-existing diabetes and compare mortality risk to the general population.

Methods: Using mortality linked-Hospital Episodes Statistics (2006-2014) from England, we examined risk of death, myocardial infarction, stroke, unstable angina, heart failure, and cancer following bariatric surgery; and compared risk of death in people undergoing bariatric to mortality rates of the general population.

Results: Of the 35,887 people undergoing bariatric surgery, 9,175 (25.6%) had pre-existing diabetes. During a mean follow-up of 5.3 years, 801 people died, of whom 293 (36.6%) had pre-existing diabetes. The risk of all-cause mortality in people with diabetes was 26% higher compared to those without (adjusted hazard ratio (aHR): 1.26, 95%CI: 1.08-1.46) whilst cancer was 21% higher (aHR 1.21, 1.14-1.77). Participants with diabetes before bariatric surgery had increased risk for post-surgery cardiovascular events compared to patients without pre-existing diabetes (aHR myocardial infarction: 2.08, 1.42-3.05; unstable angina: 1.80, 1.29-2.52; stroke: 1.61, 1.18-2.19; heart failure: 1.42, 1.14-1.77). Compared to the general population, age-standardised mortality rate ratio was 1.70 (1.52-1.91) and 1.35 (1.23-1.48) in people with and without pre-existing diabetes, respectively.

Conclusions: In patients who underwent bariatric surgery with pre-existing diabetes, the risk of death, cardiovascular events, and cancer was higher compared to those without diabetes, whose mortality risk after surgery still remains 35% higher compared to that of the general population.

Keywords: Bariatric surgery; cardiovascular; cancer; diabetes; mortality

Highlights

- Patients with diabetes carry a residual risk of cardiovascular, cancer, and mortality events after bariatric surgery: compared to patients without diabetes, the risk is 26% higher of all-cause mortality, 21% higher for cancer; 42% higher for heart failure; 61% higher for stroke; and double for myocardial infarction.
- The risk of death after bariatric surgery remains higher also in patients without diabetes compared to subjects of same age from the general population.

INTRODUCTION

The latest global estimates from 2016 indicate that obesity is rapidly increasing, with over 650 million obese people worldwide.¹ In 2014, the prevalence of obesity in the UK and U.S. was 26%² and 36.5%, respectively.³ Bariatric surgery is an effective treatment for weight loss in severe cases of obesity^{4,5} and has been shown to reduce the risk of cardiovascular disease (CVD) and mortality in obese people.⁶⁻⁹ Results from the Swedish Obese Subjects (SOS) study also demonstrated a reduction in the incidence of type 2 diabetes after bariatric surgery and improvements in glycaemic control.⁴ More recent data from Sweden show reduction in all-cause mortality and cardiovascular events after bariatric surgery compared to obese patients with diabetes who did not undergo surgery.¹⁰ It is unclear, however, whether the presence of diabetes before surgery alters the association of bariatric surgery with cardiovascular and mortality outcomes. The Longitudinal Assessment of Bariatric Surgery - 1 (LABS-1) study found no independent association of diabetes on a composite outcome at 30 days (including death, deep vein thrombosis, pulmonary embolism, any intervention and hospital stay) in the presence of other risk factors.¹¹ In contrast, data from the Italian Society of Obesity Surgery (SICOB) including 13,431 patients, found a low risk of early mortality following a bariatric procedure, although the risk in patients with diabetes was double that of the risk in patients without diabetes.¹² International guidelines recommend bariatric surgery for adults with a body mass index (BMI) of 40kg/m² or more, or between 35kg/m²-40kg/m² or greater in the presence of other significant diseases including type 2 diabetes.^{13, 14,15} In light of these guidelines and the limited and inconsistent previous findings on mortality outcomes after bariatric surgery in presence of pre-existing diabetes, we aimed to examine all-cause and cardiovascular mortality, incidence of cardiovascular and cancer events, following bariatric surgery in adults with and without

pre-existing diabetes in England and to estimate the risk of all-cause mortality following bariatric surgery in people with and without diabetes compared to the general population.

METHODS

Data source, study population and exposure definition

The Hospital Episodes Statistics (HES) dataset contains details of all emergency and elective inpatient admissions funded by the National Health Service (NHS) in England. Diagnoses and procedures are coded using the International Classification of Diseases 10th revision (ICD-10) and the Office of Population Census and Surveys V.4 (OPCS-4), respectively. The Office for National Statistics (ONS) mortality dataset contains the date and cause of death (coded using ICD-10) for all deaths registered in England. This longitudinal cohort analysis made use of the linked HES-ONS mortality data to identify all adult patients resident in England undergoing bariatric surgery procedures from April 2006 to March 2014 using the OPCS-4 codes. We considered a participant as having bariatric surgery if any code from the bariatric surgery code list appeared as the primary procedure code in the patients' records in addition to the ICD-10 code for obesity (E66) as their primary diagnosis to keep our exposure definition as specific as possible (**Supplementary Table S1**). Each participant entered the study on the date of admission for bariatric surgery after 1st April 2006 and was censored at the date of the outcome of interest or the end of the follow-up i.e. 1st April 2014. Patients with baseline cardiovascular disease or gastric cancer were excluded from the analysis. Pre-existing diabetes was defined by ICD-10 codes E10-E14 on or before the index date.

Main outcome measures

The main outcomes assessed in this study were all-cause mortality and CVD mortality. Information on in-hospital deaths was extracted from 'discharge method' information in HES, which was further supplemented by ONS linkage. All other deaths were extracted from ONS. The cause of death was considered to be cardiovascular if the underlying cause of death was a cardiovascular event (**Supplementary Table S2**). We also assessed the incidence of cardiovascular events including myocardial infarction (MI), unstable angina, stroke, heart failure and cancer (code lists: **Supplementary Table S1**). Lastly, we assessed mortality rates in people with and without pre-existing diabetes undergoing bariatric surgery compared to the UK general population.

Statistical Analysis

Participant characteristics were described using proportions and were compared between people with and without pre-existing diabetes using chi-squared tests. Average follow-up time overall and by diabetes status was calculated. Time-to-event for all-cause mortality, cardiovascular mortality, and incidence of MI, unstable angina, stroke, heart failure, and cancer were compared between people with and without pre-existing diabetes using Kaplan-Meier survival curves and survival distributions were compared using a log-rank test. Cox proportional hazards models were used to calculate hazard ratios (HR) and 95% CIs comparing people with and without pre-existing diabetes, adjusting for age, sex, index of multiple deprivation (IMD) score, ethnicity, geographic region, procedure type, and Charlson comorbidity index (an index to define comorbidities in patients) modified to exclude pre-existing diabetes and effect modification by procedure type was also assessed. Proportional hazards assumption was checked using Schoenfeld residuals. Risk for all-cause mortality at 30 days was estimated using the same method as above. Lastly, we used the

mortality data stratified by age for England and Wales in 2015 (<https://www.ons.gov.uk/>) and corresponding events and person-years in our dataset to estimate with negative binomial regression all-cause mortality rate ratio following bariatric surgery in people with and without pre-existing diabetes compared to the general population.

Sensitivity Analysis

A restricted definition of bariatric surgery was used including codes only for primary operations (**Supplementary Table S2**) and HR and mortality rate ratio were recalculated as participants with revision/secondary operations may be at a higher risk of adverse events due to the revision of surgery. Lastly, a sensitivity analysis restricted the definition of bariatric surgery to only include codes exclusively used for bariatric surgery was also performed (**Supplementary Table S2**).

RESULTS

Participant characteristics

A total of 38,060 participants underwent a bariatric surgery procedure between April 2006 and March 2014. After excluding participants with baseline CVD, gastric cancer or gastric bubble/balloon procedure (n=1,552) and missing information on age, sex or residence recorded as outside of England (n=634), 35,887 participants remained, of which 9,175 (25.6%) had a record of diabetes at the time of bariatric surgery. Approximately 85% of the bariatric surgery procedures were performed in participants aged between 30 to 59 years (**Table 1**). The proportion of women with pre-existing diabetes undergoing bariatric surgery was slightly lower compared those without diabetes (68.1% vs. 80.7%, respectively) and 31.0% patients undergoing bariatric surgery were from the most deprived areas compared to the 10.6% from the least deprived areas. People with pre-existing diabetes had higher Charlson comorbidity score compared to people without diabetes (4.2% people in the diabetes group with Charlson score ≥ 5 vs. 1.6% in people without diabetes). Bypass procedures constituted half of the total bariatric procedures (**Supplementary Table S3**); however, people with pre-existing diabetes had a higher proportion of bypass procedure and lower proportion of gastric banding compared to people without diabetes (55.2% vs. 50.1% bypass and 19.9% vs. 24.1% gastric banding, respectively).

All-cause and cardiovascular mortality

During a mean follow-up of 5.3 years (standard deviation, 2.0 years), there were 801 deaths of which 293 (36.6%) were in people with pre-existing diabetes and 508 (63.4%) in people without. There was no statistically significant difference in the 30-day mortality following bariatric surgery by diabetes

status (adjusted HR comparing people with diabetes to those without: 1.58, 95% CI 0.90-2.77). In people with pre-existing diabetes, the incidence for all-cause mortality was 6.3 per 1,000 person-years (95% CI 5.6-7.1) compared to 3.5 per 1,000 person-years (95% CI 3.2-3.8) in people without (Supplementary Figure S1). For long-term mortality, Kaplan-Meier curves revealed a greater mortality risk in people with pre-existing diabetes compared to those without ($p < 0.001$) (Figure 1). After adjusting for age, sex, IMD score, ethnicity, geographic region, Charlson comorbidity index and procedure type, the risk of all-cause mortality in people with pre-existing diabetes was 26% higher compared to those without (HR 1.26, 95% CI 1.08-1.46) (Figure 2). There was no interaction in the association between diabetes status and mortality by procedure type (p for interaction=0.344). There were only 50 CVD deaths of which 16 (32.0%) were in the diabetes group. Further multivariable analyses were not carried out in this cohort, due to the small number of events in the diabetes group.

Cardiovascular events and cancer

The incidence ranged from 0.3 per 1,000 person-years and 1.5 per 1,000 person-years for MI to 5.0 per 1,000 person-years and 8.4 per 1,000 person-years for cancer in people without and with pre-existing diabetes, respectively (Supplementary Figure S1). Of the 121 incident MIs, 71 (58.7%) were reported in people with pre-existing diabetes. In the multivariable analysis, diabetes was associated with over two-fold increase in the risk of an MI after bariatric surgery compared to those without (HR 2.08, 95% CI 1.42-3.05) (Figure 2). Diabetes was also associated with an increased risk of unstable angina (69 events in people with pre-existing diabetes vs 87 in people without, HR 1.80, 95% CI 1.29-2.52). Similarly, people with pre-existing diabetes were more likely to have a stroke compared to those without (77 vs 114 events, respectively; HR 1.61, 95% CI 1.18-2.19). The risk of

heart failure after bariatric surgery was higher in people with pre-existing diabetes compared to people without (153 vs 207 events respectively; HR 1.42, 95% CI 1.14-1.77). Lastly, 1,092 individuals developed cancer during the follow-up, of whom 379 (34.7%) had pre-existing diabetes. The risk of cancer was 21% higher in the people with pre-existing diabetes compared to people without (HR 1.21, 95% CI 1.07-1.38) (**Figure 2**).

Mortality compared to the general population

The age-specific mortality rates were higher in the diabetes group compared to the general population for younger ages with progressively lower differences in older people (**Supplementary Figure S2; Figure 3**). People without pre-existing diabetes who underwent bariatric surgery had a 35% increased risk of all-cause mortality compared to the general population (age-standardised mortality rate ratio: 1.35, 95% CI 1.23-1.48; **Figure 3**). In comparison, people with pre-existing diabetes and bariatric surgery had a 70% increased risk of all-cause mortality compared (age-standardised mortality rate ratio: 1.70, 95% CI 1.52-1.91) (**Figure 3**).

Sensitivity Analyses

The estimates remained similar to the main analysis when the definition of bariatric surgery was restricted to only include primary procedure codes. Similarly, when restricting the definition of bariatric surgery to only codes exclusively used for bariatric surgery, the risk of all-cause mortality in the diabetes group was 33% higher (HR 1.33, 95% CI 1.10-1.60) (**Supplementary Table S4**).

DISCUSSION

Principal Findings

In this large population-based study, we found the risk of all-cause mortality to be 26% higher after bariatric surgery in people with pre-existing diabetes compared to those without diabetes. The risk of all cardiovascular outcomes including MI, stroke, unstable angina, and heart failure was also greater in adults with pre-existing diabetes, with the risk of MI being over twice as high in adults with pre-existing diabetes compared to people without diabetes. Similarly, the rate of cancer was 21% higher following bariatric surgery in people with pre-existing diabetes compared with people without. Notably, the risk of death following bariatric surgery remained higher in patients without diabetes when compared to that of the general population.

Strengths and limitations

To our knowledge, this is the largest study to comprehensively examine the risk of mortality and other complications following bariatric surgery by diabetes status. Data from HES captured diagnoses, procedures, and other comorbidities for all hospital admissions in England and mortality data were further confirmed through linkage with ONS, hence the outcome ascertainment in our study was robust. However, these data are primarily collected for administrative and financial purposes. Therefore, we did not have information on baseline BMI or the change in BMI after bariatric surgery or HbA1c before surgery. Nevertheless, in the UK, until 2014 bariatric surgery was only offered to people with a BMI of 40kg/m² or more, or between 35kg/m²-40kg/m² or greater in the presence of other significant disease including diabetes.¹³ A study including 756 patients

undergoing bariatric surgery at Brigham and Women's Hospital, Boston found the mean BMI to be 47 (standard deviation, 6.8) and 47 (7.3) in people with and without diabetes and no statistically significant difference between the two groups.¹⁶ Therefore, we believe the BMI of participants was at least 35kg/m². Additionally, due to the nature of data collection for HES, we also did not have information on duration and severity of diabetes and glycaemic control before and after bariatric surgery and residual confounding may be present. Furthermore, owing to similar limitations of data recording, we could not further stratify the group without diabetes into euglycaemia and prediabetes. We included all codes for diabetes rather than specific type 2 diabetes as the type of diabetes is not very well phenotyped in HES and some patients have codes for both type 1 and type 2 over time.¹⁷ Nevertheless, around 85% of the participants were identified as having type 2 diabetes.¹⁷ Lastly, when comparing age-specific mortality rates with the general population, we could only include age 35-74 as the number of events in other age groups was either very small or nil.

Comparison with current literature

We found that, in spite of no significant difference in 30-day mortality, the risk of long-term mortality and CVD outcomes following bariatric surgery is higher in people with pre-existing diabetes compared to those without. The Emerging Risk Factors Collaboration study including 123,205 deaths among 820,900 people found that people with diabetes have 70% higher risk of death from any cause compared to those without.¹⁸ Our study supports a similar hypothesis whereby people with diabetes who undergo bariatric surgery are still at higher risk of all-cause mortality and other outcomes compared to those without diabetes, despite similar short-term mortality and biochemical and anthropometric improvements which take place bariatric surgery.⁴ Therefore, people with

diabetes who undergo bariatric surgery may need closer monitoring, well-beyond the first year post-surgery.

Currently, there are no studies comparing long-term mortality and CVD outcomes following bariatric surgery between people with and without pre-existing diabetes. Nevertheless, data from SICOB including 34 deaths within the first 60 days following 13,431 bariatric surgery procedures found a significant difference between the mortality proportions by diabetes status, i.e. 0.4% of participants without diabetes died within the first 60 days compared with 0.8% participants with diabetes.¹² One potential explanation of our findings could be a higher number of existing comorbidities in people with diabetes as the risk of mortality after adjusting for Charlson comorbidity index was 26%.

Another potential explanation could be metabolic “memory” phenomenon, whereby following a prolonged duration of diabetes the complications persist and progress despite adequate glycaemic control.¹⁹ This phenomenon has been seen in many trials involving patients with type 2 diabetes including the United Kingdom Prospective Diabetes Study (UKPDS)²⁰ and several other studies.²¹⁻²³

The degree of weight loss is known to be the major driver for improvements in cardiovascular risk factors^{24,25} as well as glycaemic improvement.²⁶ A study using data from 3,193 patients with gastric bypass from Virginia Commonwealth University Medical Center found that after one year of surgery people with diabetes had significantly lower weight loss and higher BMI compared to people without diabetes,²⁷ which may potentially explain why people with diabetes in our study have worse outcomes than people without diabetes. A study including 232 morbidly obese patients with type 2 diabetes found the mortality rate in morbidly obese non-operated people with type 2 diabetes to be 28%.²⁸ In comparison, crude all-cause mortality in the diabetes group undergoing bariatric surgery in our study was 3.19%. Therefore, although the rate of all-cause mortality after bariatric surgery in

people with type 2 diabetes is significantly higher than the general population, the rate is considerably lower in relation to non-operated obese type 2 patients.

In both participants with and without diabetes, we found a low fraction of cardiovascular-to-all-cause mortality: deaths from cardiovascular diseases accounted only for 6.2% of all-cause deaths (5.5% and 6.7% in participants with and without pre-existing diabetes, respectively), a fraction which is lower compared to those found in the general population. Our estimate is also lower than those reported in previous studies of patients who underwent bariatric surgery, ranging from 15.9% to 42.6%.^{7,10,29} Heterogeneity in the populations included, along with differences in the definition of the underlying cause of death (through ICD-10 codes) and in health care systems, and dissimilar study calendar time (period effect) and duration, could explain the smaller fraction of cardiovascular-to-all-cause mortality found in our study. However, a larger fraction of non-cardiovascular death has been already reported in obese subjects with diabetes: the relationship between BMI and cardiovascular death differs from that between BMI and all-cause death, particularly for high levels of BMI and likely related to an increased risk of cancer death.³⁰ From this perspective, our findings extended previous observations also in subjects with diabetes who underwent bariatric surgery.

Conclusion

Using the largest population-based cohort of bariatric surgery patients to date, we found that despite the reported improvements in biomarkers and outcomes after surgery, and no significant difference in 30-day mortality between people with and without diabetes, people with diabetes carry a residual risk of adverse CVD outcomes and mortality, suggesting that patients with pre-existing diabetes may need closer monitoring and risk factor control in clinical care following bariatric surgery; further studies should explore the potential reasons for this excessive risk in

people with diabetes. Moreover, based on our findings, patients with pre-existing diabetes undergoing bariatric surgery should be made aware of such residual risk before the procedure as well as in patients without diabetes it should be recognised that the risk of death after surgery remains higher compared to subjects from the general population.

ACKNOWLEDGEMENTS

The authors acknowledge support from the National Institute for Health Research (NIHR) Collaboration for Leadership in Applied Health Research and Care – East Midlands (CLAHRC – EM) and NIHR CLAHRC West Midlands, and the NIHR Leicester Biomedical Research Centre, Leicester, UK. The views expressed are those of the authors and not necessarily those of the NHS, the NIHR or the Department of Health. The authors would also like to thank Ben Coupland for providing support with data extraction.

DISCLOSURE

FZ: Unrestricted educational grant to the University of Leicester from Sanofi-Aventis; the funding source had no role in study design, data collection, data analysis, data interpretation or writing of the report.

DRW: Grant in support of investigator initiated studies and honoraria from Sanofi-Aventis and Novo Nordisk.

MJD: Consultant, advisory board member and speaker for Novo Nordisk, Sanofi-Aventis, Lilly, Merck Sharp & Dohme, Boehringer Ingelheim, AstraZeneca and Janssen and as a speaker for Mitsubishi Tanabe Pharma Corporation. Grants in support of investigator and investigator initiated trials from Novo Nordisk, Sanofi-Aventis and Lilly.

KK: Consultant and speaker for Novartis, Novo Nordisk, Sanofi-Aventis, Lilly, Servier and Merck Sharp & Dohme. Grants in support of investigator and investigator initiated trials from Novartis, Novo Nordisk, Sanofi-Aventis, Lilly, Pfizer, Boehringer Ingelheim and Merck Sharp & Dohme. Funds for research, honoraria for speaking at meetings and advisory boards for Lilly, Sanofi-Aventis, Merck Sharp & Dohme and Novo Nordisk.

All other authors declare there is no duality of interest in connection with their involvement in this study.

No external funding available for this study.

ETHICS

As only pseudonymised information was used in this study, ethics approval was not needed.

REFERENCES

1. Obesity and overweight Fact sheet. 2018. (Accessed August 20, 2018, at <http://www.who.int/mediacentre/factsheets/fs311/en/>)
2. Health & Social Care Information Centre. Statistics on Obesity, Physical Activity and Diet England, 2016. Leeds: Health and Social Care Information Centre; 2016.
3. Ogden CL, Carroll MD, Fryar CD, Flegal KM. Prevalence of obesity among adults and youth: United States, 2011–2014. *NCHS data brief* 2015;219:1-8.
4. Sjostrom L, Lindroos AK, Peltonen M, et al. Lifestyle, diabetes, and cardiovascular risk factors 10 years after bariatric surgery. *New England Journal of Medicine* 2004;351:2683-93.
5. Buchwald H. Bariatric surgery for morbid obesity: Health implications for patients, health professionals and third-party payers. *Journal of the American College of Surgeons* 2005;200:593-604.
6. Sjostrom L, Peltonen M, Jacobson P, et al. Bariatric Surgery and Long-term Cardiovascular Events. *Jama-Journal of the American Medical Association* 2012;307:56-65.
7. Adams TD, Gress RE, Smith SC, et al. Long-term mortality after gastric bypass surgery. *New England Journal of Medicine* 2007;357:753-61.
8. Johnson BL, Blackhurst DW, Latham BB, et al. Bariatric Surgery Is Associated with a Reduction in Major Macrovascular and Microvascular Complications in Moderately to Severely Obese Patients with Type 2 Diabetes Mellitus. *Journal of the American College of Surgeons* 2013;216:545-56.
9. Romeo S, Maglio C, Burza MA, et al. Cardiovascular Events After Bariatric Surgery in Obese Subjects With Type 2 Diabetes. *Diabetes Care* 2012;35:2613-7.
10. Eliasson B, Liakopoulos V, Franzen S, et al. Cardiovascular disease and mortality in patients with type 2 diabetes after bariatric surgery in Sweden: a nationwide, matched, observational cohort study. *Lancet Diabetes & Endocrinology* 2015;3:847-54.
11. Flum DR, Belle SH, King WC, et al. Perioperative Safety in the Longitudinal Assessment of Bariatric Surgery. *New England Journal of Medicine* 2009;361:445-54.
12. Morino M, Toppino M, Forestieri P, Angrisani L, Allaix ME, Scopinaro N. Mortality after bariatric surgery - Analysis of 13,871 morbidly obese patients from a National Registry. *Annals of Surgery* 2007;246:1002-9.
13. National Institute for Health and Care Excellence. Obesity: identification, assessment and management. London: National Institute for Health and Care Excellence; 2014.
14. Fried M, Yumuk V, Oppert JM, et al. Interdisciplinary European Guidelines on Metabolic and Bariatric Surgery. *Obesity Surgery* 2014;24:42-55.
15. American Diabetes Association. Standards of Medical Care in Diabetes-2016. *Diabetes Care* 2016;39 (suppl 1):S1-S106.
16. Xourafas D, Ardestani A, Ashley SW, Tavakkoli A. Impact of Weight-Loss Surgery and Diabetes Status on Serum ALT Levels. *Obesity Surgery* 2012;22:1540-7.

17. Zaccardi F, Webb DR, Davies MJ, et al. Risk factors and outcome differences in hypoglycaemia-related hospital admissions: A case-control study in England. *Diabetes, Obesity and Metabolism* 2017.
18. Emerging Risk Factors Collaboration. Diabetes mellitus, fasting glucose, and risk of cause-specific death. *New England Journal of Medicine* 2011;2011:829-41.
19. Cefalu WT, Rosenstock J, LeRoith D, Blonde L, Riddle MC. Getting to the "Heart" of the Matter on Diabetic Cardiovascular Disease: "Thanks for the Memory". *Diabetes Care* 2016;39:664-7.
20. Turner RC, Cull CA, Frighi V, Holman RR, Grp UPDS. Glycemic control with diet, sulfonylurea, metformin, or insulin in patients with type 2 diabetes mellitus - Progressive requirement for multiple therapies (UKPDS 49). *Jama-Journal of the American Medical Association* 1999;281:2005-12.
21. Ismail-Beigi F, Craven T, Banerji MA, et al. Effect of intensive treatment of hyperglycaemia on microvascular outcomes in type 2 diabetes: an analysis of the ACCORD randomised trial. *Lancet* 2010;376:419-30.
22. Patel A, MacMahon S, Chalmers J, et al. Intensive blood glucose control and vascular outcomes in patients with type 2 diabetes. *New England Journal of Medicine* 2008;358:2560-72.
23. Duckworth WC, McCarren M, Abraira C. Glucose control and cardiovascular complications: The VA Diabetes Trial. *Diabetes Care* 2001;24:942-5.
24. Wing RR, Lang W, Wadden TA, et al. Benefits of Modest Weight Loss in Improving Cardiovascular Risk Factors in Overweight and Obese Individuals With Type 2 Diabetes. *Diabetes Care* 2011;34:1481-6.
25. Gregg EW, Jakicic JM, Lewis CE, et al. Association of the magnitude of weight loss and changes in physical fitness with long-term cardiovascular disease outcomes in overweight or obese people with type 2 diabetes: a post-hoc analysis of the Look AHEAD randomised clinical trial. *Lancet Diabetes & Endocrinology* 2016;4:913-21.
26. Dixon JB, O'Brien PE, Playfair J, et al. Adjustable gastric banding and conventional therapy for type 2 diabetes - A randomized controlled trial. *Jama-Journal of the American Medical Association* 2008;299:316-23.
27. Carbonell AM, Wolfe LG, Meador JG, Sugerman HJ, Kellum JM, Maher JW. Does diabetes affect weight loss after gastric bypass? *Surgery for Obesity and Related Diseases* 2008;4:441-4.
28. Long S, MacDonald KG, Swanson M, et al. The gastric bypass operation reduces the progression and mortality of non-insulin dependent-diabetes mellitus. *Gastroenterology* 1996;110:A1400-A.
29. Sjöström L, Narbro K, Sjöström CD, et al. Effects of bariatric surgery on mortality in Swedish obese subjects. *New England Journal of Medicine* 2007; 357:741-52.
30. Zaccardi F, Dhalwani NN, Papamargaritis D, et al. Nonlinear association of BMI with all-cause and cardiovascular mortality in type 2 diabetes mellitus: a systematic review and meta-analysis of 414,587 participants in prospective studies. *Diabetologia*. 2017; 60:240-248.

Author Manuscript

FIGURE LEGENDS

Figure 1 - Kaplan Meier plots for all outcomes comparing people with and without diabetes

Blue line: without diabetes; Red line: with diabetes. Log-rank test $p < 0.001$ for all outcomes.

Figure 2 - Multivariable hazard ratio comparing mortality and other outcomes in people with and without diabetes after bariatric surgery

Estimates adjusted for age, sex, IMD score, ethnicity, region, modified Charlson Index and procedure type.

Figure 3 - Age-specific and age-standardised rate ratio for all-cause mortality following bariatric surgery in people with and without diabetes compared to the general population

Mortality rate ratios following bariatric surgery in patients with (full red squares) and without (empty blue squares) pre-existing diabetes compared to the general population (England and Wales, 2015).

Table 1 - Characteristics of the study population by diabetes status

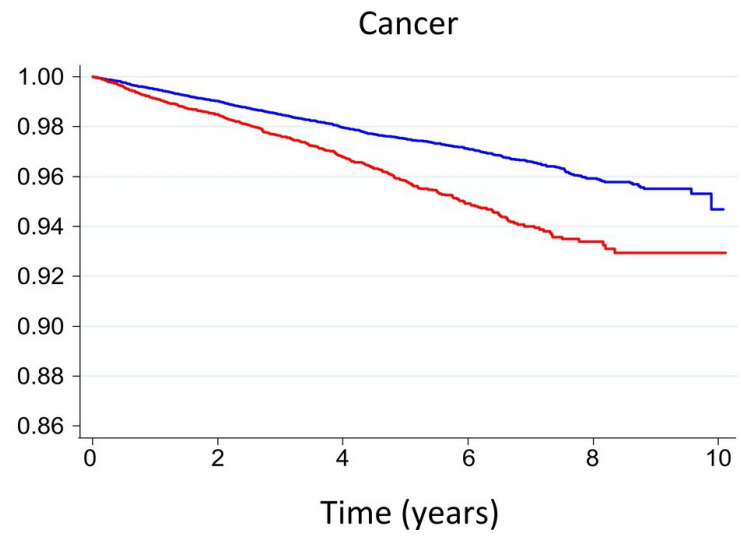
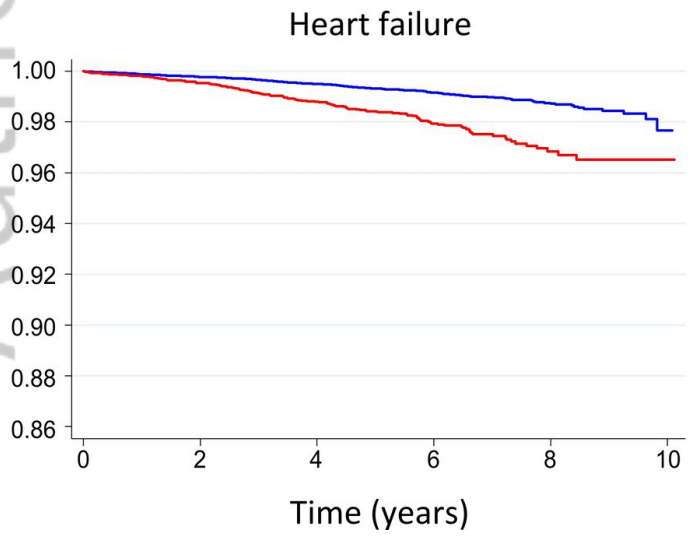
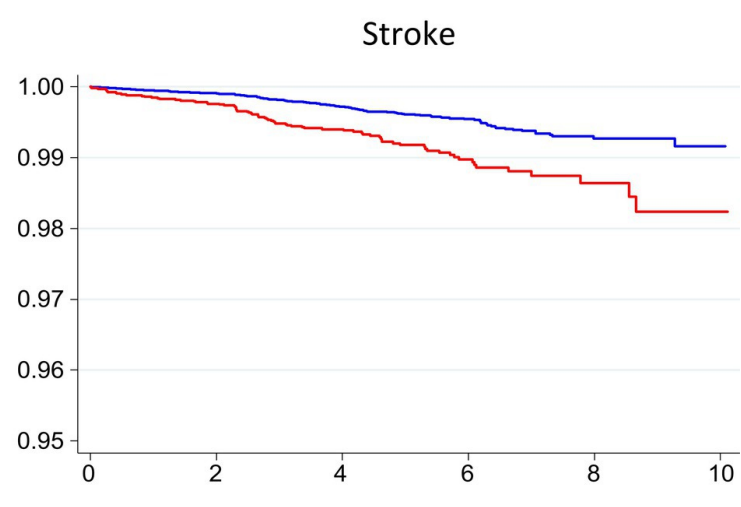
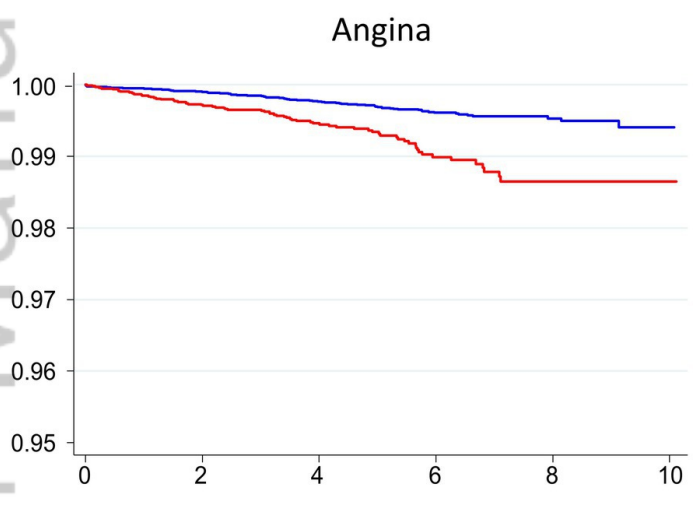
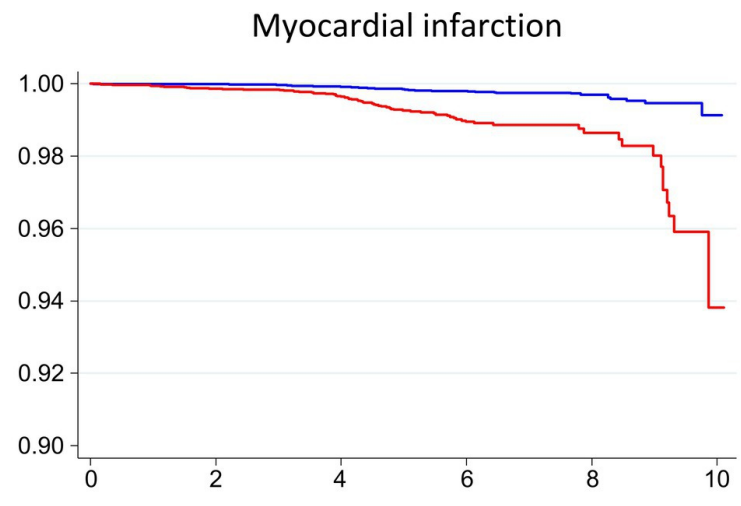
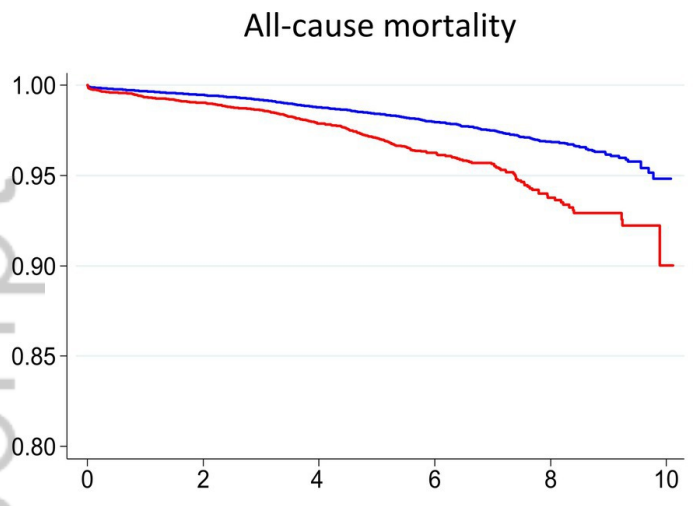
	Overall		No Diabetes		Diabetes	
	N = 35,887	%	n = 26,712	%	n = 9,175	%
Age in years[†]						
<20	159	0.4	143	0.5	10+ ‡	‡
20-29	3,082	8.6	2,814	10.5	268	2.9
30-39	8,165	22.8	6,903	25.8	1,262	13.8
40-49	12,764	35.6	9,519	35.6	3,245	35.4
50-59	9,007	25.1	5,815	21.8	3,192	34.8
60-69	2,605	7.3	1,459	5.5	1,146	12.5
70-79	100+ ‡	‡	50+ ‡	‡	45	0.5
≥80	‡	‡	‡	‡	‡	‡
Sex[†]						
Male	8,070	22.5	5,145	19.3	2,925	31.9
Female	27,817	77.5	21,567	80.7	6,250	68.1
IMD Score[†]						
Quintile 1 (most deprived)	11,132	31.0	8,445	31.6	2,687	29.3
Quintile 2	8,930	24.9	6,661	24.9	2,269	24.7
Quintile 3	6,684	18.6	4,873	18.2	1,811	19.7
Quintile 4	5,245	14.6	3,819	14.3	1,426	15.5
Quintile 5 (least deprived)	3,815	10.6	2,846	10.7	969	10.6
Unknown/missing	81	0.2	68	0.3	12	0.1
Ethnicity[†]						
White	25,834	72.0	19,032	71.3	6,802	74.1
Asian or Asian British	728	2.0	470	1.8	258	2.8
Black or Black British	1,458	4.1	1,111	4.2	347	3.8
Mixed	342	1.0	264	1.0	78	0.9
Other Ethnic Group	494	1.4	361	1.4	133	1.5
Unknown	7,031	19.6	5,474	20.5	1,557	17.0
Region[†]						
North East	3,579	10.0	2,662	10.0	917	10.0
North West	2,316	6.5	1,915	7.2	401	4.4
Yorkshire & Humber	4,745	13.2	3,770	14.1	975	10.6
East Midlands	2,679	7.5	2,050	7.7	629	6.9
West Midlands	3,599	10.0	2,503	9.4	1,096	11.9
East of England	2,082	5.8	1,282	4.8	800	8.7
London	8,334	23.2	6,352	23.8	1,982	21.6
South East	5,393	15.0	3,925	14.7	1,468	16.0
South West	3,090	8.6	2,192	8.2	898	9.8
Unknown	70	0.2	61	0.2	9	0.1
Charlson Comorbidity Score[†]						
0	28617	79.7	21775	81.5	6842	74.6
1 to 4	6451	18.0	4504	16.9	1947	21.2
5+	819	2.3	433	1.6	386	4.2
Procedure Type[†]						
Gastric Bypass	18,437	51.4	13,374	50.1	5,063	55.2
Gastric Banding	8,259	23.0	6,431	24.1	1,828	19.9
Sleeve Gastrectomy	5,809	16.2	4,429	16.6	1,380	15.0

Gastroplasty	3,382	9.4	2,478	9.3	904	9.9
Year of Surgery†						
2006 - 2010	17,100	47.7	13,276	49.7	3,824	41.7
2011 -2014	18,787	52.4	13,436	50.3	5,351	58.3

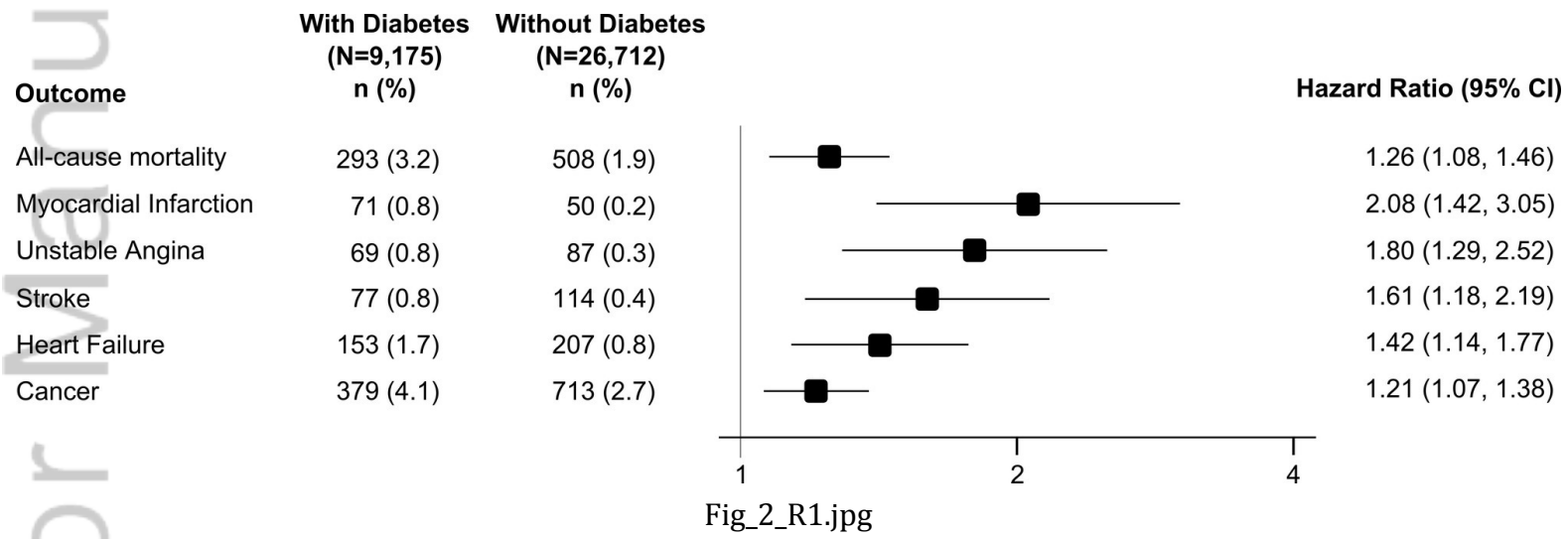
† p-value for comparison between people with and without diabetes <0.01

‡ one cell with <5 value

Author Manuscript

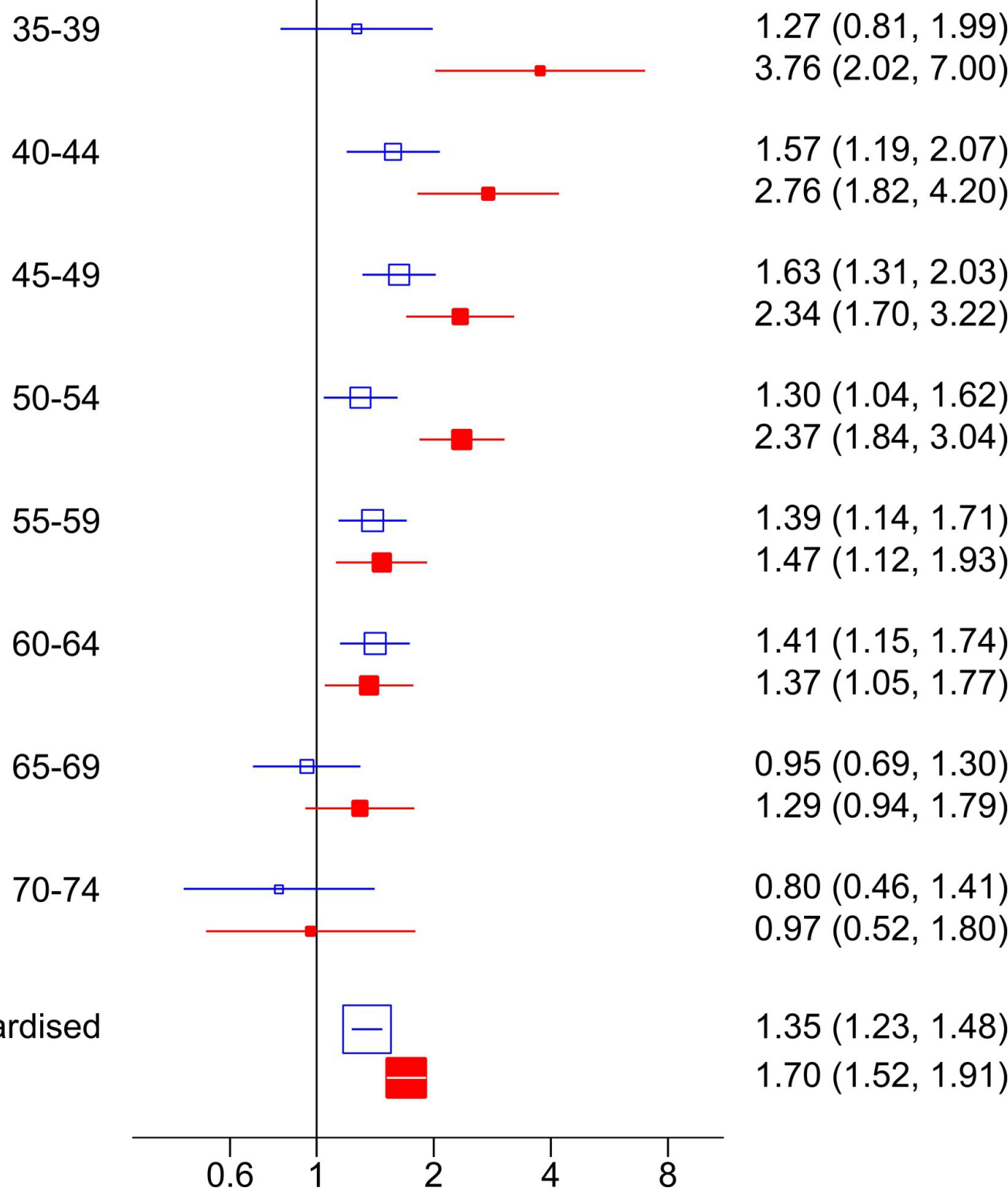


Fig_1_R1.jpg



Age group (years)

Mortality Rate Ratio (95% CI)



Fig_3_R1.jpg

STROBE Statement—Checklist of items that should be included in reports of cohort studies

Cardiovascular, cancer and mortality events after bariatric surgery in people with and without pre-existing diabetes: A nationwide study

	Item No	Recommendation	Page
Title and abstract	1	(a) Indicate the study's design with a commonly used term in the title or the abstract	1
		(b) Provide in the abstract an informative and balanced summary of what was done and what was found	1
Introduction			
Background/rationale	2	Explain the scientific background and rationale for the investigation being reported	3
Objectives	3	State specific objectives, including any prespecified hypotheses	3
Methods			
Study design	4	Present key elements of study design early in the paper	4
Setting	5	Describe the setting, locations, and relevant dates, including periods of recruitment, exposure, follow-up, and data collection	4
Participants	6	(a) Give the eligibility criteria, and the sources and methods of selection of participants. Describe methods of follow-up	4
		(b) For matched studies, give matching criteria and number of exposed and unexposed	NA
Variables	7	Clearly define all outcomes, exposures, predictors, potential confounders, and effect modifiers. Give diagnostic criteria, if applicable	4-5
Data sources/ measurement	8*	For each variable of interest, give sources of data and details of methods of assessment (measurement). Describe comparability of assessment methods if there is more than one group	4-5
Bias	9	Describe any efforts to address potential sources of bias	5-6
Study size	10	Explain how the study size was arrived at	7
Quantitative variables	11	Explain how quantitative variables were handled in the analyses. If applicable, describe which groupings were chosen and why	5
Statistical methods	12	(a) Describe all statistical methods, including those used to control for confounding	5
		(b) Describe any methods used to examine subgroups and interactions	5
		(c) Explain how missing data were addressed	5
		(d) If applicable, explain how loss to follow-up was addressed	NA
		(e) Describe any sensitivity analyses	5-6
Results			
Participants	13*	(a) Report numbers of individuals at each stage of study—eg numbers potentially eligible, examined for eligibility, confirmed eligible, included in the study, completing follow-up, and analysed	7
		(b) Give reasons for non-participation at each stage	7
		(c) Consider use of a flow diagram	-
Descriptive data	14*	(a) Give characteristics of study participants (eg demographic, clinical, social) and information on exposures and potential confounders	7
		(b) Indicate number of participants with missing data for each variable of interest	7

		(c) Summarise follow-up time (eg, average and total amount)	7
Outcome data	15*	Report numbers of outcome events or summary measures over time	7-8
Main results	16	(a) Give unadjusted estimates and, if applicable, confounder-adjusted estimates and their precision (eg, 95% confidence interval). Make clear which confounders were adjusted for and why they were included	7-8
		(b) Report category boundaries when continuous variables were categorized	NA
		(c) If relevant, consider translating estimates of relative risk into absolute risk for a meaningful time period	-
Other analyses	17	Report other analyses done—eg analyses of subgroups and interactions, and sensitivity analyses	9
Discussion			
Key results	18	Summarise key results with reference to study objectives	10
Limitations	19	Discuss limitations of the study, taking into account sources of potential bias or imprecision. Discuss both direction and magnitude of any potential bias	10-11
Interpretation	20	Give a cautious overall interpretation of results considering objectives, limitations, multiplicity of analyses, results from similar studies, and other relevant evidence	11-12
Generalisability	21	Discuss the generalisability (external validity) of the study results	12-13
Other information			
Funding	22	Give the source of funding and the role of the funders for the present study and, if applicable, for the original study on which the present article is based	14

*Give information separately for exposed and unexposed groups.

Note: An Explanation and Elaboration article discusses each checklist item and gives methodological background and published examples of transparent reporting. The STROBE checklist is best used in conjunction with this article (freely available on the Web sites of PLoS Medicine at <http://www.plosmedicine.org/>, Annals of Internal Medicine at <http://www.annals.org/>, and Epidemiology at <http://www.epidem.com/>). Information on the STROBE Initiative is available at <http://www.strobe-statement.org>.

**Cardiovascular, cancer and mortality events after bariatric surgery
in people with and without pre-existing diabetes:**

A nationwide study

Running Title Bariatric surgery in diabetes

Nafeesa N DHALWANI ¹, Francesco ZACCARDI ¹, Hina WAHEED ², Jemma MYTTON ², Dimitris PAPAMARGARITIS ¹, David R WEBB ¹, Felicity EVISON ², Richard LILFORD ³, Melanie J DAVIES ^{1,4}, Kamlesh KHUNTI ¹

¹Diabetes Research Centre, University of Leicester, UK

²University Hospitals Birmingham, UK

³University of Warwick, UK

⁴Leicester Biomedical Research Centre, UK

Nafeesa N DHALWANI current address: Evidera Ltd, Metro Building, 6th Floor, 1 Butterwick, London W6 8DL

Corresponding Author:

Dr Francesco Zaccardi, PhD

Postal address: Leicester Diabetes Centre, Leicester General Hospital
Gwendolen Rd, Leicester LE5 4PW, United Kingdom

Phone: 0044 116 2584322

Fax: 0044 116 2584499

Email address: frazac@fastwebnet.it