

Minerva Access is the Institutional Repository of The University of Melbourne

Author/s:

Abbott, RC;Verdon, DJ;Gracey, FM;Hughes-Parry, HE;Iliopoulos, M;Watson, KA;Mulazzani, M;Luong, K;D'Arcy, C;Sullivan, LC;Kiefel, BR;Cross, RS;Jenkins, MR

Title:

Corrigendum to: Novel high-affinity EGFRvIII-specific chimeric antigen receptor T cells effectively eliminate human glioblastoma (Clinical & Translational Immunology, (2021), 10, 5, 10.1002/cti2.1283)

Date:

2021-01-01

Citation:

Abbott, R. C., Verdon, D. J., Gracey, F. M., Hughes-Parry, H. E., Iliopoulos, M., Watson, K. A., Mulazzani, M., Luong, K., D'Arcy, C., Sullivan, L. C., Kiefel, B. R., Cross, R. S. & Jenkins, M. R. (2021). Corrigendum to: Novel high-affinity EGFRvIII-specific chimeric antigen receptor T cells effectively eliminate human glioblastoma (Clinical & Translational Immunology, (2021), 10, 5, 10.1002/cti2.1283). Clinical and Translational Immunology, 10 (7), <https://doi.org/10.1002/cti2.1317>.

Persistent Link:

<https://hdl.handle.net/11343/287525>

License:

[CC BY](#)

CORRIGENDUM

# Novel high-affinity EGFRvIII-specific chimeric antigen receptor T cells effectively eliminate human glioblastoma

Rebecca C Abbott, Daniel J Verdon, Fiona M Gracey, Hannah E Hughes-Parry, Melinda Iliopoulos, Katherine A Watson, Matthias Mulazzani, Kylie Luong, Colleen D'Arcy, Lucy C Sullivan, Ben R Kiefel, Ryan S Cross & Misty R Jenkins

Clinical & Translational Immunology 2021; 10: e1317.

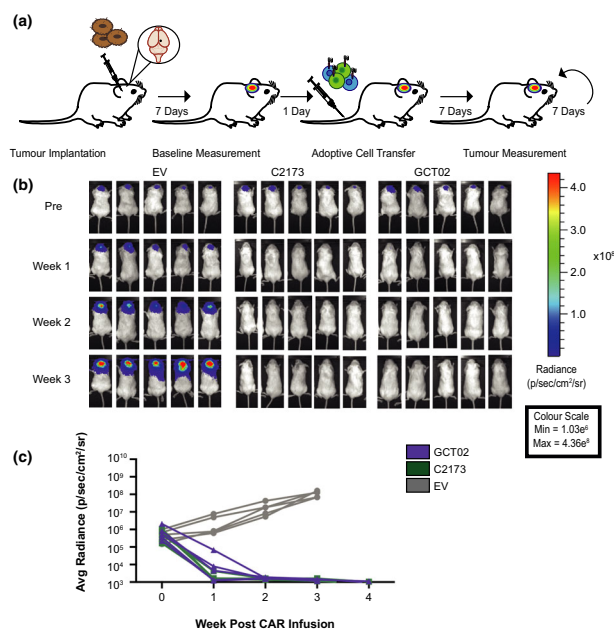
Correction to: *Clin Trans Immunol* 2021; 10: e1283. <https://doi.org/10.1002/cti.1283>. Published online 9 May 2021

Figure 5 originally published in this article was incorrect, as it contained a duplicated mouse image. The corrected Figure 5 and its caption appear below.

The authors apologise for this error.



This is an open access article under the terms of the Creative Commons Attribution License, which permits use, distribution and reproduction in any medium, provided the original work is properly cited.



**Figure 5.** GCT02 CAR T cells effectively induce regression of intracranial tumors. **(a)** Schematic of the experimental protocol to evaluate the *in vivo* function of CAR T cells against EGFRvIII-expressing intracranial tumors. Mice were intracranially injected with U87-EGFRvIII GFP-Luc tumor cells and 7 days later were imaged using bioluminescence. The mice were allocated to treatment groups before delivery of a single intravenous dose of  $5 \times 10^6$  CD4<sup>+</sup>:  $5 \times 10^6$  CD8<sup>+</sup> T cells day 8 post-activation GCT02 or C2173 CAR T cells. Empty vector T cells (EV) were injected as a negative control. Bioluminescence was examined weekly to monitor tumor size over time. The tumor injection site is indicated by black circle. **(b)** Bioluminescence imaging of U87-EGFRvIII GFP-Luc tumor-bearing NSG mice, treated with either empty vector (EV), C2173 or GCT02 CAR T cells. Individual mice from each treatment group are shown for up to 3 weeks after CAR T cell infusion. Representative of two independent experiments. **(c)** Quantification of tumor growth in the mice in panel **b**. Tumor size was quantitated in radiance (photons/sec/area/sr). Each line represents a single mouse.  $n = 5$  mice per group. Data are one representative of two independent biological replicates.