



Minerva Access is the Institutional Repository of The University of Melbourne

Author/s:

Coombs, GW;Goering, RV;Chua, KYL;Monecke, S;Howden, BP;Stinear, TP;Ehricht, R;O'Brien, FG;Christiansen, KJ

Title:

The molecular epidemiology of the highly virulent st93 australian community staphylococcus aureus strain

Date:

2012-08-10

Citation:

Coombs, G. W., Goering, R. V., Chua, K. Y. L., Monecke, S., Howden, B. P., Stinear, T. P., Ehricht, R., O'Brien, F. G. & Christiansen, K. J. (2012). The molecular epidemiology of the highly virulent st93 australian community staphylococcus aureus strain. Plos One, 7 (8), <https://doi.org/10.1371/journal.pone.0043037>.

Persistent Link:

<https://hdl.handle.net/11343/41150>

License:

[CC BY](#)

The Molecular Epidemiology of the Highly Virulent ST93 Australian Community *Staphylococcus aureus* Strain

Geoffrey W. Coombs^{1,2*}, Richard V. Goering³, Kyra Y. L. Chua^{4,5,6,7}, Stefan Monecke^{8,9}, Benjamin P. Howden^{4,5,6,7}, Timothy P. Stinear^{4,7}, Ralf Ehricht⁸, Frances G. O'Brien², Keryn J. Christiansen^{1,2}

1 Australian Collaborating Centre for *Enterococcus* and *Staphylococcus* Species (ACCESS) Typing and Research, PathWest Laboratory Medicine – Western Australia, Royal Perth Hospital, Western Australia, Australia, **2** School of Biomedical Sciences, Curtin University, Western Australia, Australia, **3** Department of Medical Microbiology, Creighton University, Omaha, Nebraska, United States of America, **4** Department of Microbiology and Immunology, University of Melbourne, Victoria, Australia, **5** Austin Centre for Infection Research (ACIR), Infectious Diseases Department, Austin Health, Victoria, Australia, **6** Microbiology Department, Monash University, Victoria, Australia, **7** Department of Microbiology, Austin Health, Victoria, Australia, **8** Alere Technologies GmbH, Jena, Germany, **9** Institute for Medical Microbiology and Hygiene, Technical University of Dresden, Dresden, Germany

Abstract

In Australia the PVL - positive ST93-IV [2B], colloquially known as “Queensland CA-MRSA” has become the dominant CA-MRSA clone. First described in the early 2000s, ST93-IV [2B] is associated with skin and severe invasive infections including necrotizing pneumonia. A singleton by multilocus sequence typing (MLST) eBURST analysis ST93 is distinct from other *S. aureus* clones. To determine if the increased prevalence of ST93-IV [2B] is due to the widespread transmission of a single strain of ST93-IV [2B] the genetic relatedness of 58 *S. aureus* ST93 isolated throughout Australia over an extended period were studied in detail using a variety of molecular methods including pulsed-field gel electrophoresis, *spa* typing, MLST, microarray DNA, SCCmec typing and *dru* typing. Identification of the phage harbouring the *lukS-PV/lukF-PV* Panton Valentine leucocidin genes, detection of allelic variations in *lukS-PV/lukF-PV*, and quantification of LukF-PV expression was also performed. Although ST93-IV [2B] is known to have an apparent enhanced clinical virulence, the isolates harboured few known virulence determinants. All PVL-positive isolates carried the PVL-encoding phage Φ Sa2USA and the *lukS-PV/lukF-PV* genes had the same R variant SNP profile. The isolates produced similar expression levels of LukF-PV. Although multiple rearrangements of the *spa* sequence have occurred, the core genome in ST93 is very stable. The emergence of ST93-MRSA is due to independent acquisitions of different *dru*-defined type IV and type V SCCmec elements in several *spa*-defined ST93-MSSA backgrounds. Rearrangement of the *spa* sequence in ST93-MRSA has subsequently occurred in some of these strains. Although multiple ST93-MRSA strains were characterised, little genetic diversity was identified for most isolates, with PVL-positive ST93-IVa [2B]-t202-dt10 predominant across Australia. Whether ST93-IVa [2B] t202-dt10 arose from one PVL-positive ST93-MSSA-t202, or by independent acquisitions of SCCmec-IVa [2B]-dt10 into multiple PVL-positive ST93-MSSA-t202 strains is not known.

Citation: Coombs GW, Goering RV, Chua KYL, Monecke S, Howden BP, et al. (2012) The Molecular Epidemiology of the Highly Virulent ST93 Australian Community *Staphylococcus aureus* Strain. PLoS ONE 7(8): e43037. doi:10.1371/journal.pone.0043037

Editor: Herminia de Lencastre, Rockefeller University, United States of America

Received: April 17, 2012; **Accepted:** July 16, 2012; **Published:** August 10, 2012

Copyright: © 2012 Coombs et al. This is an open-access article distributed under the terms of the Creative Commons Attribution License, which permits unrestricted use, distribution, and reproduction in any medium, provided the original author and source are credited.

Funding: This research was supported by PathWest Laboratory Medicine - WA, Curtin University, the Western Australian Department of Health and the National Health and Medical Research Council of Australia Project Grant 1008656. The funders had no role in study design, data collection and analysis, decision to publish, or preparation of the manuscript.

Competing Interests: RE and SM are employees of Alere Technologies GmbH. This does not alter the authors' adherence to all the PLoS ONE policies on sharing data and materials. There are no patents, products in development or marketed products to declare. The other authors have declared that no competing interests exist.

* E-mail: Geoffrey.coombs@health.wa.gov.au

Introduction

The community-associated methicillin resistant *Staphylococcus aureus* (CA-MRSA) worldwide epidemic is polyclonal, however several well characterized clones predominate in different regions of the world: Sequence type (ST) 8-IV [2B] (USA300) and ST1-IV [2B] (USA400) in North America [1,2]; ST80-IV [2B] (European clone) in Europe [3], North Africa [4] and the Middle East [5]; ST59-V [5C2&5] (Taiwan clone) in Taiwan [6], ST30-IV [2B] (South West Pacific [SWP] CA-MRSA) in the Western Pacific [7,8] and ST772-MRSA-V [5C2] (Bengal Bay clone) in India and Bangladesh [9]. Transmission of these clones into other regions has occurred [10,11]. The occurrence of concurrent epidemics of

CA-MRSA in many countries by different clones has been striking. Equally noteworthy are a number of common features of these epidemics, prominent among them the ability to cause severe infections in young otherwise healthy people and the carriage of *lukS-PV/lukF-PV* Panton Valentine Leukocidin (PVL) encoding genes by the organism.

In Australia the PVL - positive ST93-IV [2B], colloquially known as “Queensland CA-MRSA”, has recently emerged to become the dominant CA-MRSA clone. First described in the early 2000s, ST93 is a singleton by MLST eBURST analysis and is therefore distinct from other *S. aureus* clones [12].

In the 2010 Australian Group for Antimicrobial Resistance (AGAR) Community *S. aureus* Surveillance Programme (SAP10)

ST93-IV [2B] accounted for 41.4% of all CA-MRSA, 27.6% of all MRSA and 4.9% of all *S aureus* community-onset infections (<http://www.agargroup.org/files/FED%20REPORT%20SAP210%20MRSA%20FINAL%20shrink.pdf>). The mean age of patients with ST93-IV [2B] infections (31 years, median 25 years) was significantly lower ($P < 0.0001$) than the mean age of patients with PVL negative CA-MRSA infections (53 years; median 57 years).

ST93-IV [2B] is associated with skin infection and severe invasive infection including necrotizing pneumonia, deep-seated abscess, osteomyelitis, septic arthritis and septicaemia [13,14,15]. Although ST93-IV [2B] has an apparent enhanced clinical virulence, the recently sequenced ST93-IV [2B] strain “JKD6159” has a relative paucity of recognizable virulence determinants [16,17]. This strain however does contain genes encoding three important CA-MRSA virulence factors, Hla, PVL and α -type phenol soluble modulins (PSMs), and when compared to three other well-characterised Australian MRSA strains, ST1-IV [2B], ST30-IV [2B] and ST239-III [3B] and the epidemic North American strain, USA300, was shown to be the most virulent in two *in vivo* models [17].

While predominately an Australian strain, ST93-IV [2B] has been reported in New Zealand, accounting for 5.1% of all MRSA referred to the Institute of Environmental Science and Research in 2010 (http://www.surv.esr.cri.nz/PDF_surveillance/Antimicrobial/MRSA/aMRSA_2010.pdf), and in the United Kingdom, [18], where many cases have epidemiological links to Australia.

In Western Australia (WA) ST93-IV [2B] was first identified in 2003 [19] and in SAP10 accounted for 28.8% of the state’s CA-MRSA community-onset infections. In the mid 1990s *S aureus* screening of indigenous people living in WA remote communities demonstrated the most prevalent methicillin susceptible *S aureus* (MSSA) lineage isolated was the PVL-positive ST93 MSSA clone [20]. Although seven CA-MRSA clones from genetically diverse backgrounds were identified in these communities, no ST93 MRSA was found during this time.

As Australia is a geographically large country with the majority of the population densely concentrated in a few major cities which are separated in many instances by vast desert areas, it is to be expected that different CA-MRSA clones will have evolved in different areas of Australia. To better understand the molecular epidemiology of ST93-IV [2B], the aim of this study was to analyse the genetic relatedness of *S aureus* ST93 isolated throughout Australia over an extended period and to determine if the increased prevalence of ST93-IV [2B] has been due to the widespread transmission of a single strain of ST93-IV [2B] or has been due to multiple independent acquisitions of the SCC*mec* element into different strains of ST93 MSSA.

Materials and Methods

Bacterial Strains and Identification

Overall 58 ST93 *S aureus* were included in the study. The 13 ST93-MSSA included four isolates from remote aboriginal communities in WA, isolated from 1995 to 2003; two isolates from the Northern Territory, isolated in 1992; five isolates from WA, isolated in 2008; and single isolates from Victoria, isolated in 2007, and Queensland, isolated in 2008. The 45 ST93-MRSA included 30 isolates from across Australia from the 2000 to 2008 AGAR Community onset *S aureus* programs, and 15 isolates from WA from 2003 to 2009. *S aureus* species and methicillin resistance was confirmed by the detection of *nuc* (thermostable extracellular nuclease) and *mecA* (methicillin resistance) genes by PCR as previously described [21].

Susceptibility Testing

An antibiogram was performed by disk diffusion on Mueller-Hinton agar according to the Clinical and Laboratory Standards Institute (CLSI) recommendations [22]. A panel of eight antimicrobial drugs was tested: erythromycin (15 μ g), tetracycline (30 μ g), trimethoprim (5 μ g), ciprofloxacin (5 μ g), gentamicin (10 μ g), rifampin (5 μ g), fusidic acid (10 μ g), and mupirocin (5 μ g). CLSI interpretive criteria [23] were used for all drugs except fusidic acid [24] and mupirocin [25].

PFG

Electrophoresis of chromosomal DNA was performed as previously described [26], using a contour-clamped homogeneous electric field (CHEF) DR III system (Bio-Rad Laboratories Pty Ltd). Chromosomal patterns were examined visually, scanned with a Quantity One device (Bio-Rad Laboratories Pty Ltd), and digitally analyzed using FPQuest (Bio-Rad Laboratories Pty Ltd). *S aureus* strain NCTC 8325 was used as a reference strain.

MLST and *Spa* Typing

Chromosomal DNA for MLST and *spa* typing was prepared using a DNeasy tissue kit (Qiagen Pty Ltd).

MLST was performed as previously described [27]. The sequences were submitted to <http://www.mlst.net/where> an allelic profile was generated and an ST assigned.

spa typing, a DNA sequenced-based analysis of the protein A gene variable region was performed as previously described [28] using the nomenclature as described on the Ridom website (<http://spa.ridom.de/>). Cluster analysis of *spa* sequences was performed using the *spa* typing plug-in tool of the BioNumerics software program (version 6.6; Applied Maths, Ghent, Belgium). The analysis compares and aligns sequences via an algorithm based on potential tandem *spa* repeat duplications, substitutions, and indels (the DSI model) [29]. A minimum spanning tree (MST) was generated from the similarity matrix with the root node assigned to the sequence type with the greatest number of related types. The default software parameters were used for analysis with a bin distance of 1.0%. Thus, the distance between *spa* types of 99% to 100% similarity was 0, 98% to 99% similarity was assigned a distance of 1, etc., on the MST. For cluster analysis, only *spa* types separated by an MST distance of ≤ 1 (i.e., if they were $\geq 98\%$ similar) were considered closely related and assigned to the same cluster.

DNA Microarray

Arrays and reagents were obtained from Alere Technologies, Jena Germany. The principle of the assay, related procedures, and a list of targets has been described previously [30,31]. Target genes included species markers, markers for accessory gene regulator (*agr*) alleles and capsule types, virulence factors, resistance genes, staphylococcal superantigen-like/exotoxin-like genes (*set/ssl* genes) and genes encoding adhesion proteins and immune evasion factors. Probes for *mecA*, *ughQ*, *xylR*, *kdp*, *ccr's*, *mecI* and two probes for *mecR* were used for SCC*mec* typing.

SCC*mec* Typing

The strategy used for SCC*mec* typing was as previously described [32]. SCC*mec* nomenclature is used as proposed by the International Working Group on the Classification of Staphylococcal Cassette Chromosome Elements (IWG-SCC) [33]. Briefly, the structural type is indicated by a Roman numeral, with a lowercase letter indicating the subtype, and the *ccr* complex and the *mec* complex are indicated by an Arabic numeral and an

uppercase letter respectively in parenthesis. Where there is an extra *ccr* element, this is indicated by “&” and an Arabic numeral designating the *ccr* type. When there is an extra *ccr* element present whose precise location is unknown it is indicated by an “&” and *ccr* number outside the parentheses.

PVL

PCR for the detection of PVL determinants was performed as previously described [34].

PVL Phage Identification

PCRs were performed to detect the six PVL-encoding phages (Φ Sa2MW, Φ Sa2958, Φ PVL, Φ 108PVL, Φ SLT and Φ SA2USA) as previously described [35,36].

Detection of Allelic Variations in *Luks-PV/lukF-PV* Genes

Detection of single nucleotide polymorphisms (SNPs) in a defined region of the *lukS-PV/lukF-PV* genes were performed as previously described [36,37]. Sequences obtained were compared to the proposed progenitor PVL gene in Φ SLT/ST30.

Quantification of *In vitro* LukF-PV Expression

PVL is a 2-component exotoxin and both LukS-PV and LukF-PV are required for activity. LukF-PV was measured instead of LukS-PV to obtain an anti-LukF-PV antibody with increased specificity of binding as there was more sequence divergence between *lukF-PV* and the orthologous 2-component *S. aureus* exotoxins compared to *lukS-PV*. To produce recombinant LukF-PV *lukF-PV* was PCR amplified using primers, forward 5'-CACCATGGCTCAACATATCACAC and reverse 5'-GCTCAGTAGGATTTTTTTC. The resulting PCR product was then TOPO cloned into pENTR/SD/D-TOPO (Invitrogen). This plasmid was sequenced using M13 primers to confirm that the insert was present in the correct orientation without mutations. *lukF-PV* was subsequently cloned using an LR recombination reaction into the expression vector pET-DEST42 (Invitrogen) which introduced a C-terminal 6x-Histidine tag. This expression clone was used to transform Rosetta2 *E. coli* (Novagen). Soluble recombinant LukF-PV was produced by the Protein Production Unit, Monash University by growth of the expression strain in Auto Induction media at 28°C. The resulting recombinant LukF-PV was purified by Nickel purification followed by gel filtration and eluted in 100 mM NaPO₄, pH 7.4, 150 mM NaCl buffer. Aliquots were frozen and stored at -80°C. The concentration of recombinant LukF-PV was determined using the 2100 Bioanalyser P230 kit (Agilent).

Quantification of LukF-PV Expression

Bacteria were grown in CCY media (3% yeast extract (Oxoid), 2% Bacto Casamino Acids (Difco), 2.3% sodium pyruvate (Sigma-Aldrich), 0.63% Na₂HPO₄, 0.041% KH₂PO₄, pH 6.7). Overnight cultures were diluted 1:100 into fresh media and then incubated at 37°C with shaking (180 rpm) until stationary phase (OD₆₀₀ ~ 1.8). Culture supernatants were harvested by centrifugation and filter sterilized. The LukF-PV expression experiments were performed in at least duplicate for each *S. aureus* strain. Trichloroacetic acid was added to culture supernatants and incubated at 4°C overnight. Precipitates were then harvested by centrifugation, washed with acetone, air-dried and solubilized in a sample buffer containing 1.7% SDS and 1% 2-mercaptoethanol. The proteins were separated on 12% SDS-PAGE.

A peptide sequence specific to LukF-PV, HWIGNNYKDEN-RATHHT was synthesized and HRP conjugated polyclonal chicken

IgY raised against this peptide (Genscript). This antibody was used to detect LukF-PV with enhanced chemiluminescence. Images generated from the western blots were quantitated using GS800 Calibrated Densitometer and Quantity One (BioRad). 50 µg of recombinant LukF-PV was used as an internal standard on each gel, and was the positive control. Results observed with this standard were set to 1.0. All other results were shown as a ratio relative to this standard. RN4220 was used as a negative control.

Dru Typing

Sequence analysis of the *mec*-associated *dru* region was performed as previously described [38]. A cluster analysis of *dru* sequences was performed using the Polymorphic VNTR plug-in tool of the BioNumerics software program (version 6.6; Applied Maths, Ghent, Belgium). The analysis compares and aligns sequences via an algorithm based on potential tandem *dru* repeat duplications, substitutions, and indels (the DSI model) [29]. A MST was generated from the similarity matrix with the root node assigned to the sequence type with the greatest number of related types. The default software parameters were used for analysis with a bin distance of 1.0%. Thus, the distance between *dru* types of 99% to 100% similarity was 0, 98% to 99% similarity was assigned a distance of 1, etc., on the MST. For cluster analysis, only *dru* types separated by an MST distance of ≤1 (i.e., if they were ≥98% similar) were considered closely related and assigned to the same cluster.

Control Strain

The sequenced ST93-IVa [2B] strain JKD6159 (NCBI GenBank Accession No. CP002114 and CP002115) was included in this study for comparison [17].

Results

Susceptibility results, SCC*mec* typing together with a summary of the resistance genes, *spa* types (using the Ridom Nomenclature) and *dru* type are shown in Table 1. Further characterisations are as follows:

Molecular Typing

By PFGE the 58 isolates (13 MSSA and 45 MRSA) had ≥80% similarity with the sequenced JKD6159 strain (Figure 1). Eleven pulsotypes were identified. The MSSA isolates consisted of three pulsotypes, “A” – “C” with 12 of the 13 isolates grouped into two closely related pulsotypes; “A” (9 isolates) and “C” (3 isolates). The MRSA isolates consisted of eight pulsotypes (“C” – “K”) with 39 of the 45 isolates grouped into two closely related pulsotypes; “D” (36 isolates) and “J” (3 isolates). The MSSA pulsotypes “A” and “C” and the MRSA pulsotypes “D” and “J” were 92% related; the difference presumably due to the insertion of the SCC*mec* type IVa [2B] element into an existing restriction fragment in the two MRSA pulsotypes. Single isolates of closely related MRSA pulsotypes “I” (SAPWH71) and “K” (SAPWH53) lacked a PVL-encoding phage. MRSA pulsotype “H” (20198) also lacked a PVL-encoding phage, however unlike the other MRSA, carried the SCC*mec* type V element with an additional *ccr* element [5C2&5]. The remaining MSSA and three MRSA isolates were classified into four unique pulsotypes (pulsotypes B, E, F, G).

Isolates representing each pulsotype were identified as ST93 by MLST.

Seven *spa* types were identified with the majority of isolates characterised as t202 (8/13 MSSA and 42/45 MRSA). The MST algorithm clustered the *spa* types into two significantly different

Table 1. Characterisation of ST93 isolates.

Region	Reference Number	Year	Specimen	Antibiogram	DNA Microarray Resistance Genotype	PFGE	MLST	<i>spa</i> Sequence	<i>Spa</i> Type	SCC <i>mec</i> type	<i>dru</i> Sequence	<i>Dru</i> Type	<i>lukS/lukF</i> <i>PV</i>
MSSA													
NT	WBG 7735	1992	Unknown	Er ^R	<i>bla_Z, bla_I, bla_R, ermC</i>	B	93	11-17-23-17-17-16-16-16-25	t4178	NA	NA		POSITIVE
NT	WBG 7762	1992	Unknown	Er ^R	<i>bla_Z, bla_I, bla_R, ermC</i>	A		11-17-16-16-25	t4699	NA	NA		POSITIVE
Qld	UQ40	2008	Unknown		<i>bla_Z, bla_I, bla_R</i>	A		11-17-23-17-17-16-16-25	t202	NA	NA		POSITIVE
Vic	DP 2039	2007	Unknown		<i>bla_Z, bla_I, bla_R</i>	A	93	11-17-23-17-17-16-16-25	t202	NA	NA		POSITIVE
WA	C229T	2003	Throat		<i>bla_Z, bla_I, bla_R</i>	A		11-17-23-17-17-16-16-25-25	t5767	NA	NA		POSITIVE
WA	N126W	2003	Hands	Er ^R	<i>bla_Z, bla_I, bla_R, ermC</i>	C	93	11-17-23-17-17-16-16-25	t202	NA	NA		POSITIVE
WA	W175	1995	Skin		<i>bla_Z, bla_I, bla_R</i>	C	93	11-17-23-17-17-16-16-25	t202	NA	NA		POSITIVE
WA	Y113S	1996	Skin	Er ^R	<i>bla_Z, bla_I, bla_R, ermC</i>	C		11-17-23-17-17-16-16-25	t202	NA	NA		POSITIVE
WA	9506160A	2008	Blood		<i>bla_Z, bla_I, bla_R</i>	A		11-17-23-17-17-16-16-25	t202	NA	NA		POSITIVE
WA	9509712N	2008	Pleural Fl		<i>bla_Z, bla_I, bla_R</i>	A		04-23-17-17-16-16-25	t6485	NA	NA		POSITIVE
WA	9524093R	2008	Buttock		<i>bla_Z, bla_I, bla_R</i>	A		11-17-23-17-17-16-16-25	t202	NA	NA		POSITIVE
WA	9525206A	2008	Blood		<i>bla_Z, bla_I, bla_R</i>	A		11-17-23-17-17-16-16-25	t202	NA	NA		POSITIVE
WA	9529120L	2008	Heel	Er ^R	<i>bla_Z, bla_I, bla_R, ermC</i>	A		11-17-23-17-17-16-16-25-25	t5767	NA	NA		POSITIVE
MRSA													
ACT	SAPATCH92	2000	Blood	Ox ^R	<i>mecA, bla_Z, bla_I, bla_R</i>	D		11-17-23-17-17-16-16-25	t202	Iva [2B]	5a-2d-4a-0-2d-5b-3a-2g-3b-4e	dt10a	POSITIVE
ACT	SAPATCH53	2008	Boil	Ox ^R	<i>mecA, bla_Z, bla_I, bla_R</i>	D		11-17-23-17-17-16-16-25	t202	Iva [2B]	5a-2d-4a-0-2d-5b-3a-2g-3b-4e	dt10a	POSITIVE
NSW	SAPRAH96	2000	Eye	Ox ^R Er ^R	<i>mecA, bla_Z, bla_I, bla_R, ermC</i>	D		11-17-23-17-17-16-16-25	t202	Iva [2B]	5a-2d-3b	dt3b	POSITIVE
NSW	SAPWH23	2000	Wound	Ox ^R	<i>mecA, bla_Z, bla_I, bla_R</i>	D		11-17-23-17-17-16-16-25	t202	Iva [2B]	5a-2d-3b-4e	dt4d	POSITIVE
NSW	SAPWH39	2000	Wound	Ox ^R Er ^R	<i>mecA, bla_Z, bla_I, bla_R</i>	D		11-17-23-17-17-16-16-25	t202	Iva [2B]	5a-2d-3b-4e	dt4d	POSITIVE
NSW	SAPWH61	2000	Wound	Ox ^R	<i>mecA, bla_Z, bla_I, bla_R</i>	D		11-17-23-17-17-16-16-25	t202	Iva [2B]	5a-2d-4a-0-2d-5b-3a-2g-3b-4e	dt10a	POSITIVE
NSW	SAPWH64	2000	Wound	Ox ^R	<i>mecA, bla_Z, bla_I, bla_R, ermC</i>	E	93	11-17-23-17-17-16-16-25	t202	Iva [2B]	5a-2d-4a-0-2d-5b-3a-2g-3b-4e	dt10a	POSITIVE
NSW	SAPWH94	2000	Wound	Ox ^R	<i>mecA, bla_Z, bla_I, bla_R</i>	D		11-17-23-17-17-16-16-25	t202	Iva [2B]	5a-2d-4a-0-2d-5b-3a-2g-3b-4e	dt10a	POSITIVE
NSW	SAPWH71	2004	Blood	Ox ^R	<i>mecA, bla_Z, bla_I, bla_R</i>	I	93	11-17-23-17-17-16-16-16	t6487	Iva [2B]	5a-2d-4a-0-2d-5b-3a-2g-3b-4e	dt10a	NEGATIVE
NSW	SAPCRGH95	2007	Blood	Ox ^R	<i>mecA, bla_Z, bla_I, bla_R</i>	D		11-17-23-17-17-16-16-25	t202	Iva [2B]	5a-2d-4a-0-2d-5b-2a-2g-3b-4e	dt10g	POSITIVE
NSW	SAPRAH21	2007	Sputum	Ox ^R	<i>mecA, bla_Z, bla_I, bla_R</i>	D		11-17-23-17-17-16-16-25	t202	Iva [2B]	5a-2d-4a-0-2d-5b-3a-2g-3b-4e	dt10a	POSITIVE

Table 1. Cont.

Region	Reference Number	Year	Specimen	Antibiogram	DNA Microarray Resistance Genotype	PFGE	MLST	<i>spa</i> Sequence	<i>Spa</i> Type	SCC <i>mec</i> type	<i>dru</i> Sequence	<i>Dru</i> Type	<i>lukS/lukF</i> <i>PV</i>
NSW	SAPRPAH7	2008	Ulcer	Ox ^R	<i>mecA, blaZ, blal, blaR, ermC</i>	D		11-17-23-17-17-16-16-25	t202	IVa [2B]	5a-2d-4a-0-2d-5b-3a-2g-3b-4e	dt10a	POSITIVE
NSW	SAPWH10	2008	Wound	Ox ^R	<i>mecA, blaZ, blal, blaR</i>	D		11-17-23-17-17-16-16-25	t202	IVa [2B]	5a-2d-4a-0-2d-5b-3a-2g-3b-4e	dt10a	POSITIVE
NSW	SAPWH53	2008	Wound	Ox ^R E ^R Tmp ^R	<i>mecA, blaZ, blal, blaR, mst(A)</i>	K	93	11-17-17-16-16-25	t1811	IVa [2B]	5a-2d-3b	dt3b	NEGATIVE
NT	SAPRDH61	2006	Wound	Ox ^R	<i>mecA, blaZ, blal, blaR</i>	D		11-17-23-17-17-16-16-25	t202	IVa [2B]	5a-2d-4a-0-2d-5b-3a-2g-3b-4e	dt10a	POSITIVE
NT	SAPRDH27	2007	Thigh	Ox ^R	<i>mecA, blaZ, blal, blaR</i>	D		11-17-23-17-17-16-16-25	t202	IVa [2B]	5a-2d-4a-0-2d-5b-3a-2g-3b-4e	dt10a	POSITIVE
NT	SAPRDH2	2008	Leg	Ox ^R	<i>mecA, blaZ, blal, blaR</i>	D		11-17-23-17-17-16-16-25	t202	IVa [2B]	5a-2d-4a-0-2d-5b-3a-2g-3b-4e	dt10a	POSITIVE
Qld	SAPRBH98	2000	Leg	Ox ^R	<i>mecA, blaZ, blal, blaR</i>	D		11-17-23-17-17-16-16-25	t202	IVa [2B]	5a-2d-4a-0-2d-5b-3a-2g-3b-4e	dt10a	POSITIVE
Qld	SAPRBH12	2005	Blood	Ox ^R	<i>mecA, blaZ, blal, blaR</i>	D		11-17-23-17-17-16-16-25	t202	IVa [2B]	5a-2d-4a-0-2d-5b-3a-2g-3b-4e	dt10a	POSITIVE
Qld	SAPGCH3	2006	Abscess	Ox ^R	<i>mecA, blaZ, blal, blaR</i>	D		11-17-23-17-17-16-16-25	t202	IVa [2B]	5a-2d-4a-0-2d-5b-3a-2g-3b-4e	dt10a	POSITIVE
Qld	SAPRBH14	2006	Wound	Ox ^R	<i>mecA, blaZ, blal, blaR</i>	D		11-17-23-17-17-16-16-25	t202	IVa [2B]	5a-2d-4a-0-2d-5b-3a-2g-3b-4e	dt10a	POSITIVE
Qld	SAPCBH10	2008	Aspirate	Ox ^R	<i>mecA, blaZ, blal, blaR</i>	D		11-17-23-17-17-16-16-25	t202	IVa [2B]	5a-2d-4a-0-2d-5b-3a-2g-3b-4e	dt10a	POSITIVE
Qld	SAPGCH28	2008	Foot	Ox ^R	<i>mecA, blaZ, blal, blaR</i>	D		11-17-23-17-17-16-16-25	t202	IVa [2B]	5a-2d-4a-0-2d-5b-3a-2g-3b-4e	dt10a	POSITIVE
Qld	SAPRBH1	2008	Forearm	Ox ^R	<i>mecA, blaZ, blal, blaR</i>	D		11-17-23-17-17-16-16-25	t202	IVa [2B]	5a-2d-4a-0-2d-5b-3a-2g-3b-4e	dt10a	POSITIVE
SA	SAPGSA73	2000	Unknown	Ox ^R	<i>mecA, blaZ, blal, blaR</i>	D		11-17-23-17-17-16-16-25	t202	IVa [2B]	5a-2d-4a-0-2d-5b-3a-2g-3b-4e	dt10a	POSITIVE
SA	SAPIMV524	2006	Abscess	Ox ^R	<i>mecA, blaZ, blal, blaR</i>	J		11-17-23-17-17-16-16-25	t202	IVa [2B]	5a-2d-4a-0-2d-5b-3a-2g-3b-4e	dt10a	POSITIVE
SA	SAPIMV531	2008	Boil	Ox ^R	<i>mecA, blaZ, blal, blaR</i>	D		11-17-23-17-17-16-16-25	t202	IVa [2B]	5a-2d-4a-0-2d-5b-3a-2g-3b-4e	dt10a	POSITIVE
Vic	SAPRCH74	2000	Wound	Ox ^R	<i>mecA, blaZ, blal, blaR</i>	D		11-17-23-17-17-16-16-25	t202	IVa [2B]	5a-2d-3b-4e	dt4d	POSITIVE
Vic	SAPAH21	2008	Wound	Ox ^R Te ^R	<i>mecA, blaZ, blal, blaR, tetK</i>	D		11-17-23-17-17-16-16-16-25	t4178	IVa [2B]	5a-2d-4a-0-2d-5b-3a-2g-3b-4e	dt10a	POSITIVE
WA	16790	2003	Axilla	Ox ^R	<i>mecA, blaZ, blal, blaR</i>	D		11-17-23-17-17-16-16-25	t202	IVa [2B]	5a-2d-4a-0-2d-5b-3a-2g-3b-4e	dt10a	POSITIVE
WA	16815	2005	Abscess	Ox ^R	<i>mecA, blaZ, blal, blaR</i>	D		11-17-23-17-17-16-16-25	t202	IVa [2B]	5a-2d-4a-0-2d-5b-3a-2g-3b-4e	dt10a	POSITIVE

Table 1. Cont.

Region	Reference Number	Year	Specimen	Antibiogram	DNA Microarray Resistance Genotype	PFGE	MLST	<i>spa</i> Sequence	<i>Spa</i> Type	SCCmec type	<i>dru</i> Sequence	<i>Dru</i> Type	<i>lukS/lukF PV</i>
WA	15586	2008	Lip	Ox ^R	<i>mecA, blaZ, blaI, blaR</i>	D		11-17-23-17-17-16-16-25	t202	Iva [2B]	5a-2d-3b	dt3b	POSITIVE
WA	15587	2008	Nose	Ox ^R Er ^R	<i>mecA, blaZ, blaI, blaR, ermC</i>	D		11-17-23-17-17-16-16-25	t202	Iva [2B]	5a-2d-4a-0-2d-5b-3a-2g-3b-4e	dt10a	POSITIVE
WA	16414	2008	Thigh	Ox ^R	<i>mecA, blaZ, blaI, blaR</i>	D		11-17-23-17-17-16-16-25	t202	Iva [2B]	5a-2d-3b	dt3b	POSITIVE
WA	16475	2008	ETT	Ox ^R	<i>mecA, blaZ, blaI, blaR</i>	D		11-17-23-17-17-16-16-25	t202	Iva [2B]	5a-2d-4a-0-2d-4f-3a-2g-3b-4e	dt10i	POSITIVE
WA	17164	2008	Abscess	Ox ^R	<i>mecA, blaZ, blaI, blaR</i>	J		11-17-23-17-17-16-16-25	t202	Iva [2B]	5a-2d-4a-0-2d-5b-3a-2g-3b-4e	dt10a	POSITIVE
WA	18158	2008	Wound	Ox ^R	<i>mecA, blaZ, blaI, blaR</i>	D		11-17-23-17-17-16-16-25	t202	Iva [2B]	5a-2d-3b	dt3b	POSITIVE
WA	18385	2008	Shin	Ox ^R	<i>mecA, blaZ, blaI, blaR</i>	D		11-17-23-17-17-16-16-25	t202	Iva [2B]	5a-2d-4a-0-2d-5b-3a-2g-3b-4e	dt10a	POSITIVE
WA	18418	2008	Nose	Ox ^R	<i>mecA, blaZ, blaI, blaR</i>	D		11-17-23-17-17-16-16-25	t202	Iva [2B]	5a-2d-3b	dt3b	POSITIVE
WA	20198	2008	Nose	Ox ^R	<i>mecA, blaZ, blaI, blaR</i>	H	93	11-17-23-17-17-16-16-25	t202	V [5C2&5]	5a-2d-4a-0-2d-5b-3a-2g-1c-4e-3e	dt11i	NEGATIVE
WA	SAPRPH48	2008	Wound	Ox ^R	<i>mecA, blaZ, blaI, blaR</i>	J	93	11-17-23-17-17-16-16-25	t202	Iva [2B]	5a-2d-4a-0-2d-5b-3a-2g-3b-4e	dt10a	POSITIVE
WA	16908	2009	Leg	Ox ^R	<i>mecA, blaZ, blaI, blaR, (dfrA)</i>	F	93	11-17-23-17-17-16-16-25	t202	Iva [2B]	5a-2d-4a-0-2d-5b-3a-2g-3b-4e	dt10a	POSITIVE
WA	17090	2009	Wound	Ox ^R	<i>mecA, blaZ, blaI, blaR, qacC</i>	G	93	11-17-23-17-17-16-16-25	t202	Iva [2B]	5a-2d-4a-0-2d-5b-3a-2g-3b-4e	dt10a	POSITIVE
WA	17195	2009	Nose	Ox ^R Er ^R	<i>mecA, blaZ, blaI, blaR, ermC, qacC</i>	D	93	11-17-23-17-17-16-16-25	t202	Iva [2B]	5a-2d-4a-0-2d-5b-3a-2g-3b-4e	dt10a	POSITIVE
WA	20548	2009	Abscess	Ox ^R	<i>mecA, blaZ, blaI, blaR</i>	D		11-17-23-17-17-16-16-25	t202	Iva [2B]	5a-2d-4a-0-2d-5b-3a-2g-3b-4e	dt10a	POSITIVE
Control Strain													
Vic	JKD6159	2004	Blood	Ox ^R	<i>mecA, blaZ, blaI, blaR</i>	D	93	11-17-23-17-17-16-16-25	t202	Iva [2B]	5a-2d-4a-0-2d-5b-3a-2g-3b-4e	dt10a	POSITIVE

Regions: ACT, Australian Capital Territory; NSW, New South Wales; NT, Northern Territory, Qld, Queensland; SA, South Australia; Vic, Victoria; WA, Western Australia.
 Antibiogram: Ox, oxacillin; Em, erythromycin; Te, tetracycline.
 Resistance Genotype: *mecA*, alternate penicillin binding protein 2 gene; *blaZ*, beta lactamase gene; *blaI*, beta-lactamase repressor (inhibitor) gene; *blaR*, beta-lactamase regulatory protein gene, *ermC*, erythromycin/clindamycin resistance gene; *msr(A)*, macrolide resistance gene; *terK*, tetracycline resistance gene; *dfrA*, trimethoprim resistance gene; *qacC* quaternary ammonium compound resistance gene protein C.
 PFGE, pulsed field gel electrophoresis; MLST, multilocus sequence type; SCCmec, staphylococcal cassette chromosome mec; *spa*, *Staphylococcus aureus* protein gene A; *dru*, the direct-repeat unit (*dru*) variable-number tandem repeat region adjacent to IS431 in SCCmec.
lukF/lukS PV, Panton Valentine leucocidin F and S component genes.
 doi:10.1371/journal.pone.0043037.t001

Dice (Opt:0.50%) (Tot:1.3%-1.3%) (H:0.0% S>0.0%) [0.0%-100.0%]
 PFGE

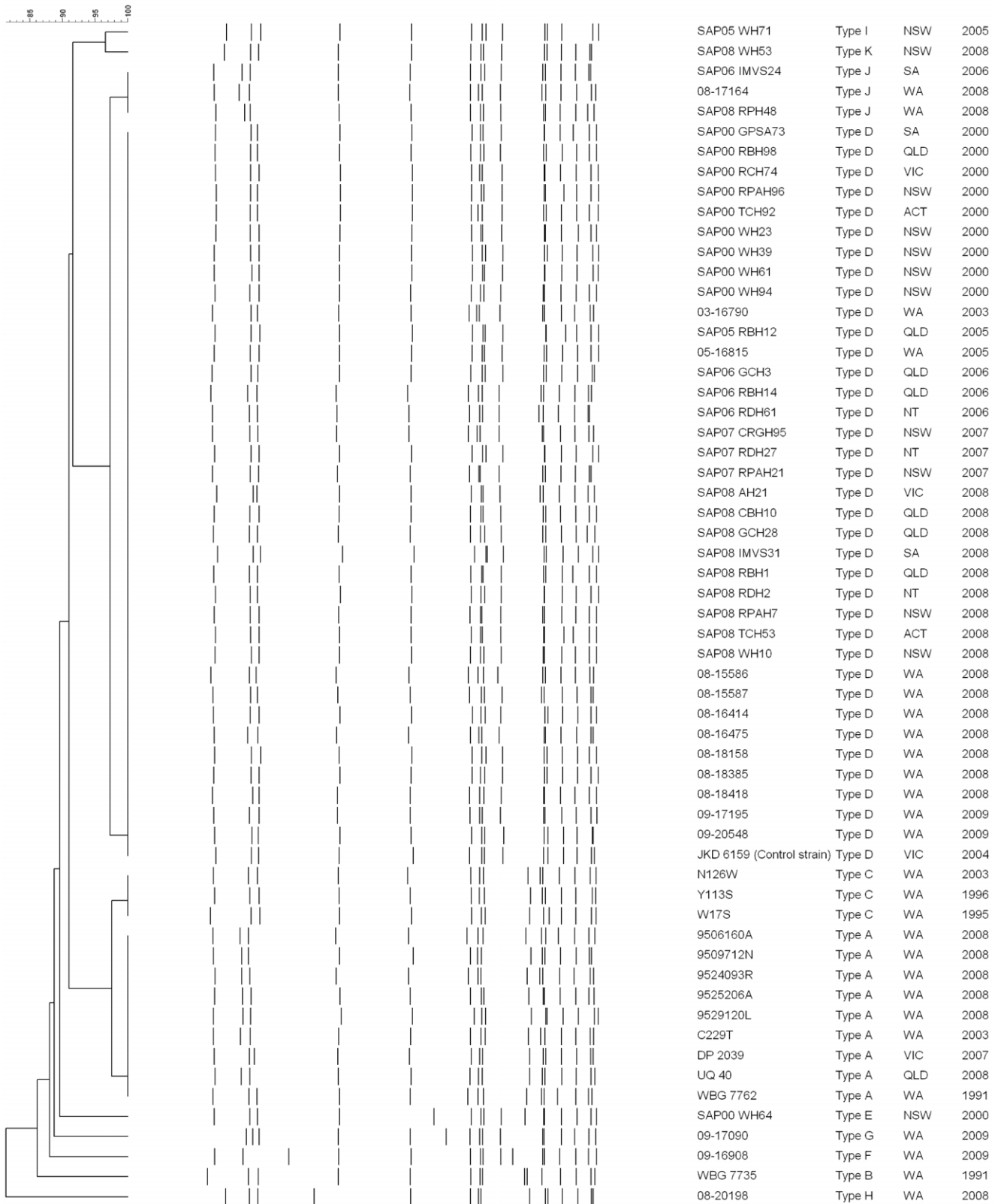


Figure 1. Dendrogram of the 58 pulsed-field gel electrophoresis patterns (PFGE) of ST93 (13 MSSA and 45 MRSA). Sequenced JKD6159 strain was used as the ST93 control. *S. aureus* strain NCTC 8325 was used as the reference strain.
 doi:10.1371/journal.pone.0043037.g001

groups; t202, t4178, t5767; t1811, t4699; plus t6487; and t6485 (Figure 2).

DNA Microarray

The β -lactamase operon (*blaZ*, *blaI*, *blaR*) was detected in all isolates (Table 1). Apart from isolate 20198, the MRSA carried *mecA* as a part of the SCC*mec* type IVa [2B] element. Carriage of other resistance genes was infrequent and variable. Five of the MSSA were phenotypically erythromycin resistant and carried *ermC*. Of the five erythromycin resistant MRSA isolates, three carried *ermC* and one the staphylococcal *msr(A)* macrolide efflux protein gene. A macrolide resistance gene was not detected in one isolate that demonstrated phenotypic resistance (SAPWH39). Two *ermC* harbouring MRSA isolates were not phenotypically erythromycin resistant. A single MRSA isolate harboured the *tetK* tetracycline resistant gene (isolated in Victoria in 2008), and two MRSA isolates carried the quaternary ammonium compound resistance protein C (*qacC*) gene (isolated in WA in 2009).

The 58 isolates were *agr* group III and capsule type 8. Although the enterotoxin and *tstI* genes were absent from all isolates, the enterotoxin homologue ORF CM14 was present in 34 isolates (4 MSSA and 30 MRSA) (Table S1). All isolates carried the *hly*, *hld* and *hlyIII* hemolysin genes; the staphylokinase (*sak*), chemotaxis inhibitory protein (*chp*) and staphylococcal complement inhibitor

(*scn*) genes; and the *aur*, *splA*, *sspA*, *sspB*, *sspP* protease genes. Although the gene for a biofilm-associated protein, *bap*, was absent, the biofilm operon *icaACD* was present in all isolates. Most isolates carried the leukocidin *lukX* and *lukY* genes, the *hl*, *hla* hemolysin genes and the *splE* protease genes.

The staphylococcal superantigen like or exotoxin-like genes (*set* or *ssl* genes) and genes encoding MSCRAMMS (microbial surface components recognizing adhesive matrix molecules) and the immune evasion factors were homogeneous and characteristic for ST93 (Tables S2, S3, S4 and S5).

Panton Valentine Leukocidin (PVL)

Apart from three MRSA isolates (SAPWH71, SAPWH53 and 20198) the *lukS-PV/lukF-PV* genes were detected in all isolates by array hybridisation and PCR. All *lukS-PV/lukF-PV* positive isolates carried the PVL-encoding phage Φ Sa2USA. Using the proposed progenitor PVL gene in Φ SLT/ST30 as a reference sequence, all isolates were similar, having the same R variant SNP profile with three substitutions compared to Φ SLT. This SNP profile is associated with the Φ Sa2USA phage.

lukF-PV expression is shown in Figure 3 and was measured to determine if there was a consistent expression profile across different ST93 strains. As expected, ST93 isolates which did not contain *lukS-PV/lukF-PV* did not express LukF-PV. However, there

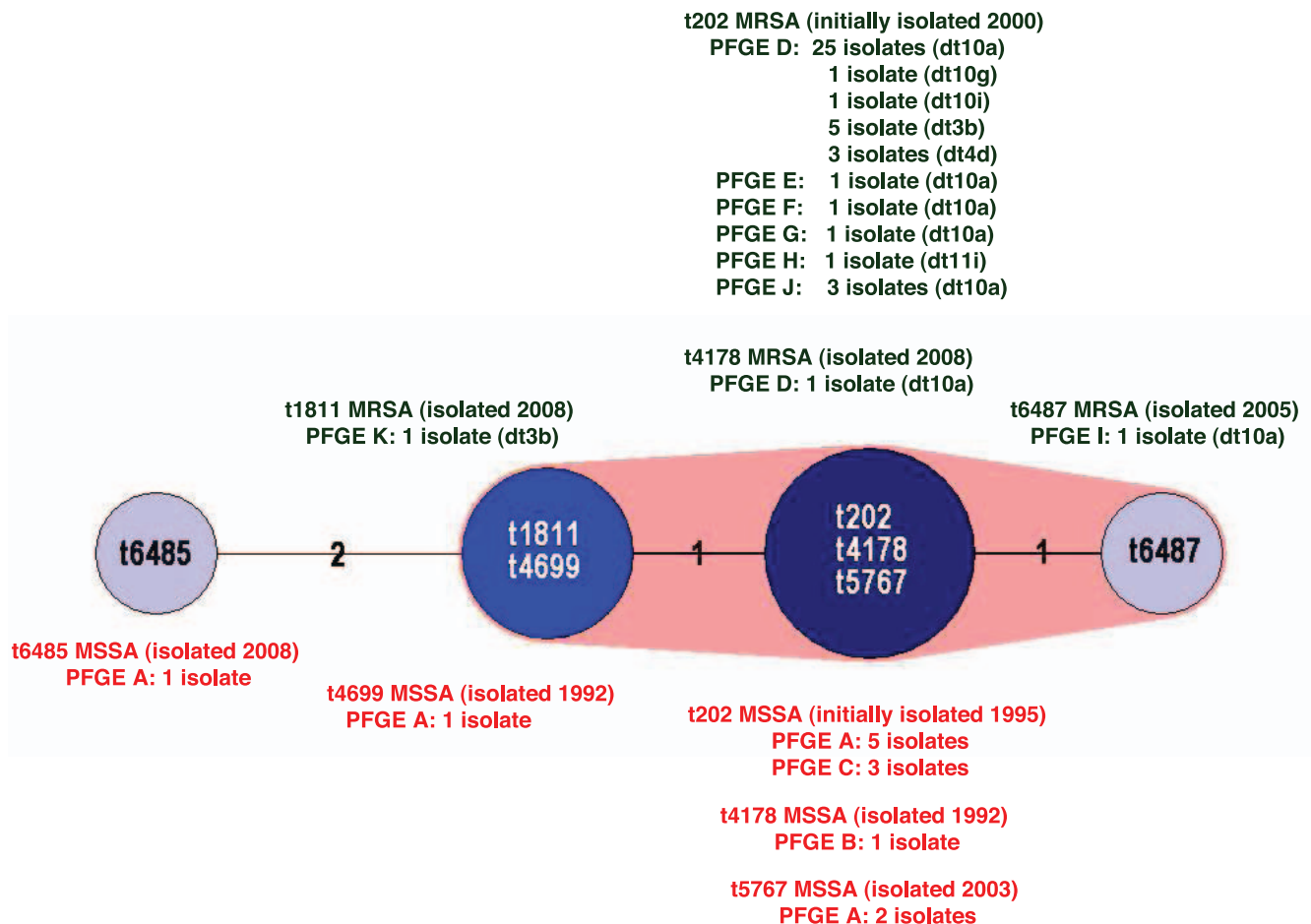


Figure 2. Minimum spanning tree (MST) of the seven ST93 *spa* types. Cluster analysis was performed using the *spa* typing plug-in tool of the BioNumerics program. *spa* types separated by an MST distance of ≤ 1 (i.e., if they were $\geq 98\%$ similar) were considered closely related and assigned to the same cluster. MSSA and MRSA *spa* types are designated in red and green print respectively. Pulsed-field gel electrophoresis (PFGE) pulsotypes and *dru* types (dt) are recorded for each *spa* type. doi:10.1371/journal.pone.0043037.g002

were three isolates (SAPCRGH95 isolated in NSW, SAPAH21 isolated in Vic, and 15587 isolated in WA) which were PVL positive by array hybridization and PCR but did not express LukF-PV indicating that there may be regulatory differences such as an *agr* defect in these isolates to account for the absence of LukF-PV. All other isolates produced LukF-PV, with expression levels similar between most strains.

dru Typing

Six *dru* types were identified (Table 1). The majority of isolates (35/45) were dt10 (33 dt10a, 1 dt10 g and 1 dt10i). The remaining nine SCCmec type IVa [2B] isolates were *dru* type dt4d (three isolates) and dt3b (6 isolates). The SCCmec type V [5C2&5] isolate (20198) was dt11i. The MST algorithm clustered the six *dru* types into three significantly different groups; dt10, dt4d plus dt3b, and dt11 (Figure 4). This suggests the SCCmec element may have been acquired on at least three occasions by ST93.

Discussion

CA-MRSA is thought to emerge when a locally prevalent strain of methicillin susceptible *S. aureus* (MSSA) acquires a SCCmec element and utilizes mobile genetic elements and single nucleotide polymorphisms to establish local and geographic niches [39]. Although the vertical and horizontal transmission of SCCmec elements into *S. aureus* has occurred on multiple occasions in the Australian community only a small number of clones have successfully found an ecological niche to predominate over other CA-MRSA clones [40]. PVL-positive ST93-IV [2B] is one such clone, and since 2000 has been reported across Australia and is responsible for the increasing prevalence of CA-MRSA infections nationwide [13].

Conflicting hypotheses have been proposed to explain the molecular evolution of ST93-MRSA. In 2008 Munckhof and

colleagues found little genetic diversity within ST93-IV [2B] suggesting it arose from one PVL-positive binary subtype of ST93 MSSA after the acquisition of SCCmec [41]. However in 2009 Tong and colleagues identified multiple *spa* types in ST93-MRSA and ST93-MSSA and proposed their data supported an early acquisition of SCCmec with subsequent rearrangement of the *spa* sequence or multiple independent acquisitions of SCCmec and coexistence of MSSA and MRSA versions of the same lineage [42]. Although seven *spa* types were described in this study, cluster analysis of the seven *spa* sequences using the Spa typing plug-in tool of the BioNumerics software program shows six of the *spa* types are closely related and can be assigned to a single cluster (data not shown).

Unlike the Tong study, which examined the *spa* types of geographically localized ST93 *S aureus* collected over a short period, the current study examined ST93 *S aureus* isolated across Australia over sixteen years using a variety of molecular tools, providing greater power to detect unique evolutionary events in geographically diverse regions.

Prior to the isolation of ST93-IV [2B], *S aureus* surveillance screening of aboriginal people living in 11 remote Western Australian communities identified ST93 as the most prevalent MSSA lineage [20]. Although located in three geographically distant regions of WA, the ST93-MSSA examined from these communities, (W17S isolated in 1995, Y113S in 1996 and C229T and N126W in 2003, and) exhibit limited diversity within their PFGE patterns, *spa* types and microarray DNA profiles. Their two *spa* types, t202 [3 isolates (“PFGE C”) and t5767 (“PFGE A”) are closely related and are assigned to the same cluster. The microarray DNA profiles for the two ST93-MSSA isolated in the Northern Territory in 1992 (WBG7735 and WBG7762) are homogeneous with the four WA remote community ST-93 MSSA. In addition their PFGE patterns are either identical (“PFGE A”) or 90% related (“PFGE B”), and their *spa* types, t4699 and t4178,

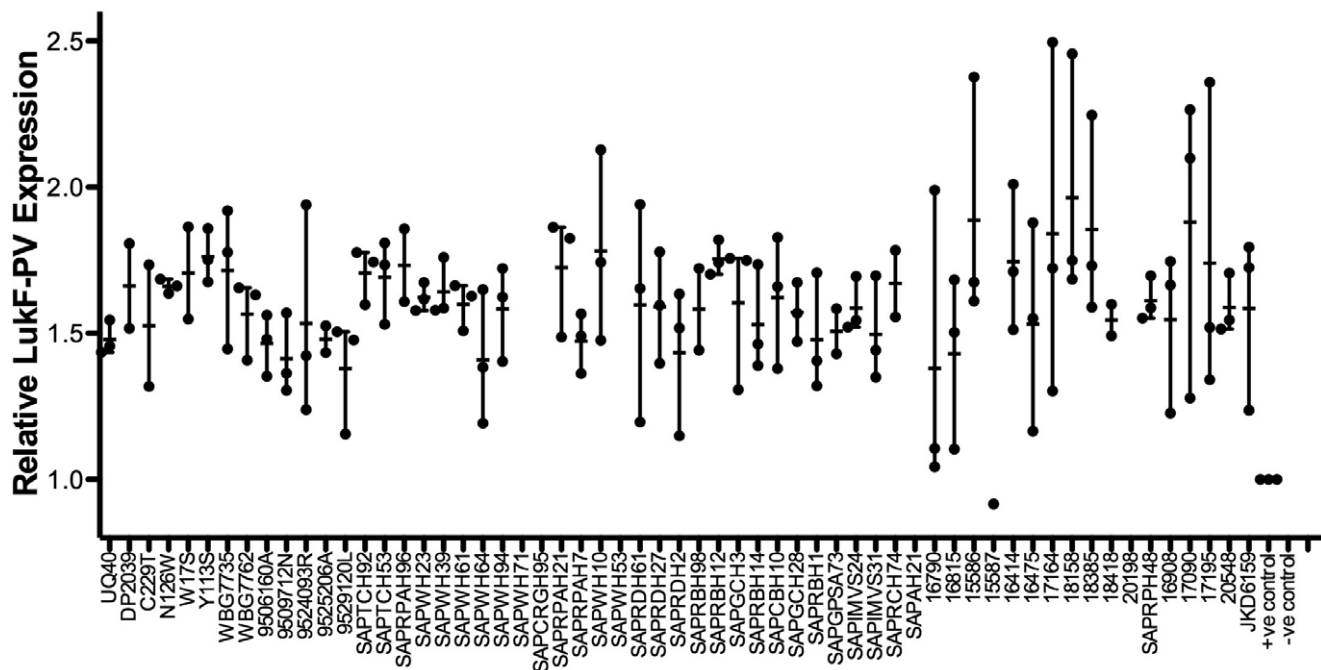


Figure 3. Relative LukF-PV expression in ST93 isolates. All isolates were tested for LukF-PV expression using western blot and LukF-PV specific antibody. Results are expressed as optical density of test strain relative to a 50 μ g control of rLukF-PV that was run on every gel. All experiments were performed with multiple replicates and mean and range is shown. Positive control, rLUK-FPV; negative control, RN4220. doi:10.1371/journal.pone.0043037.g003

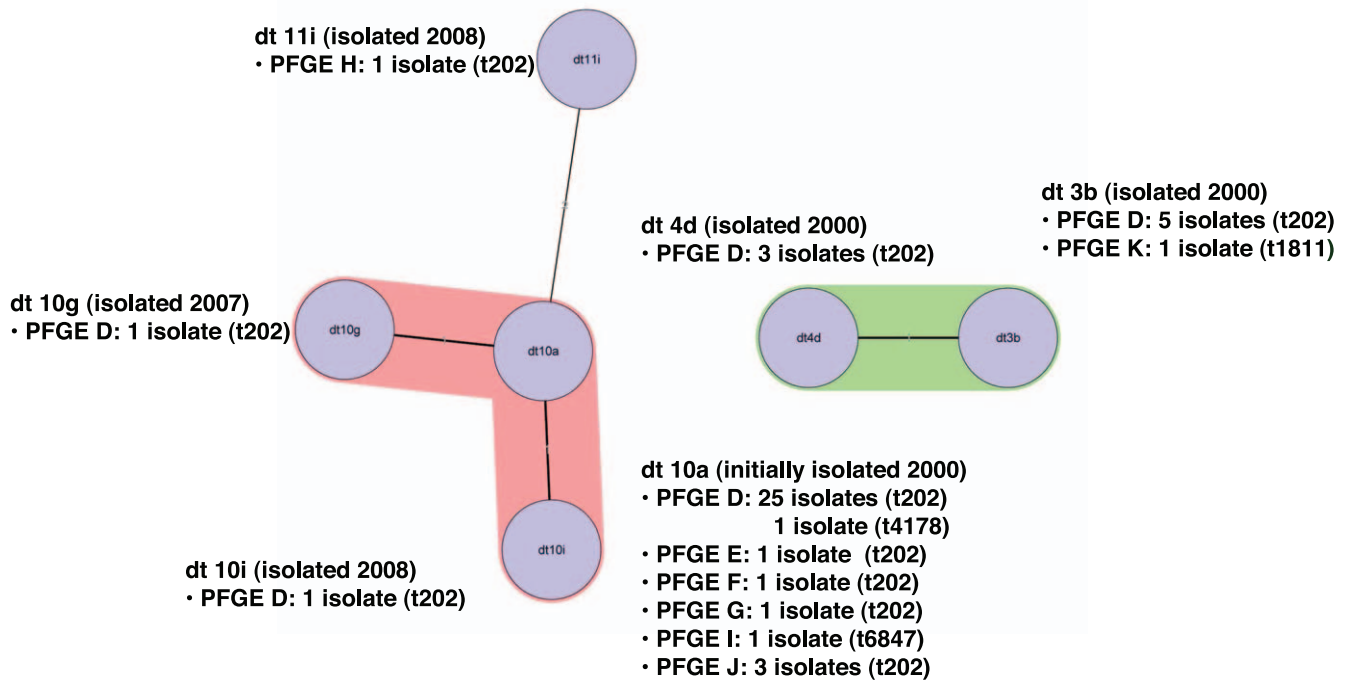


Figure 4. Minimum spanning tree (MST) of the six ST93 *dru* types. Cluster analysis was performed using the Polymorphic VNTR plug-in tool of the BioNumerics program. *dru* types separated by an MST distance of ≤ 1 (i.e., if they were $\geq 98\%$ similar) were considered closely related and assigned to the same cluster. Pulsed-field gel electrophoresis (PFGE) pulsotypes and *spa* types are recorded for each *dru* type. doi:10.1371/journal.pone.0043037.g004

are assigned to the same cluster. The DNA microarray profiles for the five ST93-MSSA, (9506160A, 9509712N, 9524093R, 9525206A and 9529120L) isolated in the state's capital, Perth in 2008 (located 700–2000 km from the remote communities and over 3,000 km from the Northern Territory border) are also homogeneous with the Western Australian remote community strains. The PFGE pattern for these isolates is “PFGE A”. The *spa* types for four of these strains are t202 (3 isolates) and t5767. The *spa* type for 9509712N (t6485) cannot be assigned to the same cluster. The PFGE patterns, *spa* types and microarray DNA profiles for the MSSA isolated on the Australian eastern seaboard (UQ40– Queensland in 2008 and DP2039– Victoria in 2007) are identical to three Perth ST93-MSSA-t202 isolates.

As shown in Figure 1 the MRSA isolates are $\geq 80\%$ related by PFGE with the majority of isolates falling into pulsotype D. Similar to the MSSA pulsotypes, pulsotype D was dispersed throughout Australia over the eight years. Although rearrangement of the *spa* sequence has occurred several times, the PFGE patterns and microarray DNA profiles of the 13 ST-93 MSSA isolates suggests the ST93 core and accessory genome is very stable. All carry the PVL-encoding phage Φ Sa2USA and their *lukS-PV/lukF-PV* genes have the same R variant SNP profile. The isolates produce similar expression levels of LukF-PV with no apparent relationship between subtype and PVL expression. The emergence of five different *spa* types, albeit four types assigned to the same cluster, suggests ST93-MSSA emerged some time ago from a common *spa* type. As the *spa* sequences are similar it is not possible to predict the ancestral strain; however one strain, ST93-MSSA-t202, predominates and has successfully disseminated across Australia.

Like ST93-MSSA, ST93-MRSA has multiple *spa* types; including the closely related t202 and t4178, identified in ST93-MSSA, t1811 and t6487, all of which are assigned to the same cluster. t202 has the largest number of isolates; 42 of the 45 ST93-MRSA. *SCCmec* and *dru* typing indicates the *SCCmec* element has

been acquired by ST93-MRSA-t202 on at least three occasions; dt10 (*SCCmec* type IVa [2B]), dt3b/dt4d (*SCCmec* type IVa [2B]) and dt11i (*SCCmec* type V [5C&5]). Unlike ST93-IVa [2B]-t202, ST93-V [5C&5]-t202 does not carry the *lukS-PV/lukF-PV* genes. The PVL-negative ST93-IVa [2B]-t1811 isolate may have arisen by independent acquisition of *SCCmec* IVa [2B] or by the subsequent rearrangement of the *spa* sequence.

As for ST93-MSSA, the PFGE patterns and microarray DNA profiles of the 45 ST-93 MRSA isolates suggests the ST93 core and accessory genome is stable. Forty three of the 45 isolates carry the PVL-encoding phage Φ Sa2USA. The *lukS-PV/lukF-PV* genes have the same R variant SNP profile and produce similar expression levels of LukF-PV as reported in ST93-MSSA.

Apart from the *ermC* gene which was identified in several early ST93-MSSA and ST93-MRSA isolates, ST93 *S. aureus* initially carried few antibiotic resistance elements. However since 2008, in addition to *mecA* and *ermC*, some isolates of ST93-MRSA have acquired the *msr(A)* and *tetK* resistance genes. Although the *dfxA* gene was not detected by the microarray DNA, SAPWH53 is phenotypically trimethoprim resistant (presumably due to an alternative trimethoprim resistance gene or a different *dfxA* allele). In addition, the quaternary ammonium compound resistance protein C gene *qacC* is carried by two isolates. The acquisition of several resistance genes by an epidemic PVL-positive CA-MRSA clone is not unique to ST93-IV [2B]. The USA300 clone (ST8-IV [2B]), initially resistant only to semi-synthetic penicillins and macrolides, is now, frequently resistant to other antimicrobial agents including clindamycin, tetracycline, mupirocin, and the fluoroquinolones; occasionally resistant to gentamicin and trimethoprim-sulfamethoxazole, and may have reduced susceptibility to daptomycin [43].

Single strain outbreaks of ST93-IV [2B] have not been reported in Australian hospitals, however as has been reported in United States hospitals with USA300 [44], ST93-IV [2B] has become a

major cause of healthcare-associated/onset infection. In 2008 Munckhof and colleagues reported nearly three quarters of nmMRSA infections in their hospital-based study were healthcare associated, of which ST93-IV [2B] predominated [41].

Conclusion

This study has demonstrated that although multiple rearrangements of the *spa* sequence have occurred, the core genome in ST93 *S. aureus* is very stable. Since 2008 PVL-positive ST93-MSSA-t202 has become the predominant ST93-MSSA across Australia. We have shown the emergence of ST93-MRSA has been due to independent acquisitions of different *dru*-defined type IV and type V SCCmec elements in several *spa*-defined ST93-MSSA backgrounds. Rearrangement of the *spa* sequence in ST93-MRSA has subsequently occurred in some of these strains. Although several ST93-MRSA strains have been identified in this study, little genetic diversity was identified for most MRSA isolates, with PVL-positive ST93-IVa [2B]-t202-dt10 predominant across Australia. However to determine if ST93-IVa [2B] t202-dt10 has arisen from one PVL-positive ST93-MSSA-t202, or by independent acquisitions of SCCmec-IVa [2B]-dt10 into multiple PVL-positive ST93-MSSA-t202 strains will require whole genomic sequencing of the isolates. Furthermore, comparative genomic sequencing may further enhance our understanding of the molecular basis for the emergence and increased virulence of ST93 CA-MRSA. At a time when this clone is acquiring additional resistance genes and an increased potential for infections in the healthcare setting, understanding the means for SCCmec acquisition, virulence determinants and transmission dynamics is crucial if we are to prevent this clone from becoming established in hospitals.

References

1. Tenover FC, McDougal LK, Goering RV, Killgore G, Projan SJ, et al. (2006) Characterization of a strain of community-associated methicillin-resistant *Staphylococcus aureus* widely disseminated in the United States. *J Clin Microbiol* 44: 108–118.
2. McDougal LK, Steward CD, Killgore GE, Chaitram JM, McAllister SK, et al. (2003) Pulsed-field gel electrophoresis typing of oxacillin-resistant *Staphylococcus aureus* isolates from the United States: establishing a national database. *J Clin Microbiol* 41: 5113–5120.
3. Vandenesch F, Naimi T, Enright MC, Lina G, Nimmo GR, et al. (2003) Community-acquired methicillin-resistant *Staphylococcus aureus* carrying Panton-Valentine leukocidin genes: worldwide emergence. *Emerg Infect Dis* 9: 978–984.
4. Bekkhoucha SN, Cady A, Gautier P, Itim F, Domnio PY (2009) A portrait of *Staphylococcus aureus* from the other side of the Mediterranean Sea: molecular characteristics of isolates from Western Algeria. *Eur J Clin Microbiol Infect Dis* 28: 553–555.
5. Udo EE, O'Brien FG, Al-Sweih N, Noronha B, Matthew B, et al. (2008) Genetic lineages of community-associated methicillin-resistant *Staphylococcus aureus* in Kuwait hospitals. *J Clin Microbiol* 46: 3514–3516.
6. Boyle-Vavra S, Ereshefsky B, Wang CC, Daum RS (2005) Successful multiresistant community-associated methicillin-resistant *Staphylococcus aureus* lineage from Taipei, Taiwan, that carries either the novel Staphylococcal chromosome cassette mec (SCCmec) type VT or SCCmec type IV. *J Clin Microbiol* 43: 4719–4730.
7. Collignon P, Gosbell I, Vickery A, Nimmo G, Stylianopoulos T, et al. (1998) Community-acquired methicillin-resistant *Staphylococcus aureus* in Australia. Australian Group on Antimicrobial Resistance. *Lancet* 352: 145–146.
8. Riley D, MacCulloch D, Morris AJ (1998) Methicillin-resistant *S. aureus* in the suburbs. *N Z Med J* 111: 59.
9. Ellington MJ, Ganner M, Warner M, Cookson BD, Kearns AM (2010) Polyclonal multiply antibiotic-resistant methicillin-resistant *Staphylococcus aureus* with Panton-Valentine leukocidin in England. *J Antimicrob Chemother* 65: 46–50.
10. Nimmo GR, Coombs GW (2008) Community-associated methicillin-resistant *Staphylococcus aureus* (MRSA) in Australia. *Int J Antimicrob Agents* 31: 401–410.
11. Tristan A, Bes M, Meugnier H, Lina G, Bozdogan B, et al. (2007) Global distribution of Panton-Valentine leukocidin-positive methicillin-resistant *Staphylococcus aureus*, 2006. *Emerg Infect Dis* 13: 594–600.

Supporting Information

Table S1 Microarray DNA ST93 virulence profile (DOCX)

Table S2 Microarray DNA ST93 ST93 staphylococcal superantigen/enterotoxin-like genes (set/ssl) profile. (DOCX)

Table S3 and S4 Microarray DNA ST93 ST93 MSCRAMMs and adhesion profile. (DOCX)

Table S5 Microarray DNA ST93 immunevasion and miscellaneous profile. (DOCX)

Acknowledgments

We gratefully acknowledge the following: Julie Pearson, Hui-leen Tan, Lynne Wilson, Yi-Kong Chew, Denise Daley, Tam Le and Ka Yan Wong from the Australian Collaborating Centre for *Enterococcus* and *Staphylococcus Species* (ACCESS) Typing and Research for their technical assistance; the WA Genome Resource Centre, Department of Clinical Immunology and Biochemical Genetics, Royal Perth Hospital for sequencing; the Molecular Biology Laboratory at Royal Perth Hospital for MLST; and the public and private medical laboratories in Western Australia and the Australian Group for Antimicrobial Resistance (AGAR) for referring the isolates.

Author Contributions

Conceived and designed the experiments: GWC FGO KJC. Performed the experiments: GWC KYC. Analyzed the data: GWC KYC SM RVG BPH FGO KJC. Contributed reagents/materials/analysis tools: GWC KYC SM RVG BPH TPS RE FGO KJC. Wrote the paper: GWC KYC BPH.

12. Munckhof WJ, Schooneveldt J, Coombs GW, Hoare J, Nimmo GR (2003) Emergence of community-acquired methicillin-resistant *Staphylococcus aureus* (MRSA) infection in Queensland, Australia. *Int J Infect Dis* 7: 259–264.
13. Coombs GW, Nimmo GR, Pearson JC, Christiansen KJ, Bell JM, et al. (2009) Prevalence of MRSA strains among *Staphylococcus aureus* isolated from outpatients, 2006. *Commun Dis Intell* 33: 10–20.
14. Peleg AY, Munckhof WJ, Kleinschmidt SL, Stephens AJ, Huygens F (2005) Life-threatening community-acquired methicillin-resistant *Staphylococcus aureus* infection in Australia. *Eur J Clin Microbiol Infect Dis* 24: 384–387.
15. Risson DC, O'Connor ED, Guard RW, Schooneveldt JM, Nimmo GR (2007) A fatal case of necrotising pneumonia due to community-associated methicillin-resistant *Staphylococcus aureus*. *Med J Aust* 186: 479–480.
16. Chua K, Seemann T, Harrison PF, Davies JK, Coutts SJ, et al. (2010) Complete genome sequence of *Staphylococcus aureus* strain JKD6159, a unique Australian clone of ST93-IV community methicillin-resistant *Staphylococcus aureus*. *J Bacteriol* 192: 5556–5557.
17. Chua KY, Seemann T, Harrison PF, Monagle S, Korman TM, et al. (2011) The dominant Australian community-acquired methicillin-resistant *Staphylococcus aureus* clone ST93-IV [2B] is highly virulent and genetically distinct. *PLoS One* 6: e25887.
18. Ellington MJ, Ganner M, Warner M, Boakes E, Cookson BD, et al. (2010) First international spread and dissemination of the virulent Queensland community-associated methicillin-resistant *Staphylococcus aureus* strain. *Clin Microbiol Infect* 16: 1009–1012.
19. Coombs GW, Pearson JC, O'Brien FG, Murray RJ, Grubb WB, et al. (2006) Methicillin-resistant *Staphylococcus aureus* clones, Western Australia. *Emerg Infect Dis* 12: 241–247.
20. O'Brien FG, Coombs GW, Pearman JW, Gracey M, Moss F, et al. (2009) Population dynamics of methicillin-susceptible and -resistant *Staphylococcus aureus* in remote communities. *J Antimicrob Chemother* 64: 684–693.
21. Costa AM, Kay I, Palladino S (2005) Rapid detection of *mecA* and *nuc* genes in staphylococci by real-time multiplex polymerase chain reaction. *Diagn Microbiol Infect Dis* 51: 13–17.
22. CLSI (2009) Performance standards for antimicrobial disk susceptibility tests. 7th ed Approved standard M02-A10. CLSI, Wayne, PA.
23. CLSI (2009) Performance standards for antimicrobial susceptibility testing. 19th informational supplement M100-S18. CLSI, Wayne, PA.
24. CA-SFM (1996) Report of the Comité de l'Antibiogramme de la Société Française de Microbiologie. *Clin Microbiol Infect* 2.

25. Finlay JE, Miller LA, Poupard JA (1997) Interpretive criteria for testing susceptibility of staphylococci to mupirocin. *Antimicrob Agents Chemother* 41: 1137–1139.
26. O'Brien FG, Udo EE, Grubb WB (2006) Contour-clamped homogeneous electric field electrophoresis of *Staphylococcus aureus*. *Nat Protoc* 1: 3028–3033.
27. Enright MC, Day NP, Davies CE, Peacock SJ, Spratt BG (2000) Multilocus sequence typing for characterization of methicillin-resistant and methicillin-susceptible clones of *Staphylococcus aureus*. *J Clin Microbiol* 38: 1008–1015.
28. Harmsen D, Claus H, Witte W, Rothganger J, Turnwald D, et al. (2003) Typing of methicillin-resistant *Staphylococcus aureus* in a university hospital setting by using novel software for spa repeat determination and database management. *J Clin Microbiol* 41: 5442–5448.
29. Benson G (1997) Sequence alignment with tandem duplication. *Journal of computational biology : a journal of computational molecular cell biology* 4: 351–367.
30. Monecke S, Jatzwauk L, Weber S, Slickers P, Ehricht R (2008) DNA microarray-based genotyping of methicillin-resistant *Staphylococcus aureus* strains from Eastern Saxony. *Clin Microbiol Infect* 14: 534–545.
31. Monecke S, Slickers P, Ehricht R (2008) Assignment of *Staphylococcus aureus* isolates to clonal complexes based on microarray analysis and pattern recognition. *FEMS Immunol Med Microbiol* 53: 237–251.
32. Coombs GW, Monecke S, Ehricht R, Slickers P, Pearson JC, et al. (2010) Differentiation of clonal complex 59 community-associated methicillin-resistant *Staphylococcus aureus* in Western Australia. *Antimicrob Agents Chemother* 54: 1914–1921.
33. Elements IWGoTCoSCC (2009) Classification of staphylococcal cassette chromosome mec (SCCmec): guidelines for reporting novel SCCmec elements. *Antimicrob Agents Chemother* 53: 4961–4967.
34. Fey PD, Said-Salim B, Rupp ME, Hinrichs SH, Boxrud DJ, et al. (2003) Comparative molecular analysis of community- or hospital-acquired methicillin-resistant *Staphylococcus aureus*. *Antimicrob Agents Chemother* 47: 196–203.
35. Ma XX, Ito T, Kondo Y, Cho M, Yoshizawa Y, et al. (2008) Two different Panton-Valentine leukocidin phage lineages predominate in Japan. *J Clin Microbiol* 46: 3246–3258.
36. Boakes E, Kearns AM, Ganner M, Perry C, Hill RL, et al. (2011) Distinct bacteriophages encoding Panton-Valentine leukocidin (PVL) among international methicillin-resistant *Staphylococcus aureus* clones harboring PVL. *J Clin Microbiol* 49: 684–692.
37. Wolter DJ, Tenover FC, Goering RV (2007) Allelic variation in genes encoding Panton-Valentine leukocidin from community-associated *Staphylococcus aureus*. *Clin Microbiol Infect* 13: 827–830.
38. Goering RV, Morrison D, Al-Doori Z, Edwards GF, Gemmell CG (2008) Usefulness of mec-associated direct repeat unit (dru) typing in the epidemiological analysis of highly clonal methicillin-resistant *Staphylococcus aureus* in Scotland. *Clin Microbiol Infect* 14: 964–969.
39. Kennedy AD, Otto M, Braughton KR, Whitney AR, Chen L, et al. (2008) Epidemic community-associated methicillin-resistant *Staphylococcus aureus*: recent clonal expansion and diversification. *Proc Natl Acad Sci U S A* 105: 1327–1332.
40. Coombs GW, Monecke S, Pearson JC, Tan HL, Chew YK, et al. (2011) Evolution and diversity of community-associated methicillin-resistant *Staphylococcus aureus* in a geographical region. *BMC Microbiol* 11: 215.
41. Munchhof WJ, Nimmo GR, Carney J, Schooneveldt JM, Huygens F, et al. (2008) Methicillin-susceptible, non-multiresistant methicillin-resistant and multiresistant methicillin-resistant *Staphylococcus aureus* infections: a clinical, epidemiological and microbiological comparative study. *Eur J Clin Microbiol Infect Dis* 27: 355–364.
42. Tong SY, Lilliebridge RA, Holt DC, McDonald MI, Currie BJ, et al. (2009) High-resolution melting analysis of the spa locus reveals significant diversity within sequence type 93 methicillin-resistant *Staphylococcus aureus* from northern Australia. *Clin Microbiol Infect* 15: 1126–1131.
43. Tenover FC, Goering RV (2009) Methicillin-resistant *Staphylococcus aureus* strain USA300: origin and epidemiology. *J Antimicrob Chemother* 64: 441–446.
44. Tenover FC, Tickler IA, Goering RV, Kreiswirth BN, Mediavilla JR, et al. (2012) Characterization of Nasal and Blood Culture Isolates of Methicillin-Resistant *Staphylococcus aureus* from Patients in United States Hospitals. *Antimicrob Agents Chemother* 56: 1324–1330.