

Molecular and immunological characterisation of tropomyosin

From *Anisakis pegreffii*

Abdouslam Asnoussi^{a*}, Ibukun E Aibinu^{a*}, Robin B. Gasser^b, Andreas L. Lopata^c and Peter M Smooker^a

^a *School of Science, RMIT University, Bundoora Victoria 3083, Australia*

^b *Department of Veterinary Biosciences, Melbourne Veterinary School, Faculty of Veterinary and Agricultural Sciences, The University of Melbourne, Parkville, Victoria 3010, Australia*

^c *James Cook University, Townsville 4811, Queensland, Australia*

*Note: *, authors contributed equally*

Correspondence address

Name: Peter M. Smooker

Address: Biotechnology & Food Science Discipline
School of Science RMIT University, Bundoora West Campus
PO Box 71, Bundoora, Vic. 3083, Australia

E-mail: peter.smooker@rmit.edu.au

Tel: +61-3-9925 7129

Fax: +61-3-9925 7110

E-mail addresses of authors:

Abdouslam Asnoussi: abdouslam@hotmail.com

Ibukun E Aibinu: ibukun.aibinu@rmit.edu.au

Robin B Gasser: robinbg@unimelb.edu.au

Andreas L. Lopata: andreas.lopata@jcu.edu.au

Peter M Smooker: peter.smooker@rmit.edu.au

Acknowledgements

We thank Dr Sandip Kamath for assisting with the immunoblots and Prof Robyn O'Hehir for donating serum samples.

Andreas Lopata received financial support via an ARC Future Fellowship for this work.

Robin Gasser received support from the Australian Research Council (ARC), the National Health and Medical Research Council (NHMRC) of Australia, Yourgene Bioscience (Taiwan), Melbourne Water Corporation and The University of Melbourne.

ABSTRACT

ABSTRACT

Tropomyosin (TM) is a major allergen in shellfish, known to cross-react with mite, cockroach and/or some roundworm (nematode) TM. In this study, we aimed to express and purify TM from the parasitic nematode *Anisakis pegreffii* and also to characterize its cross-reactivity with TM from shellfish. *A. pegreffii* was isolated from the flathead tiger fish (*Neoplatycephalus richardsoni*), and characterised using single-strand conformation polymorphism (SSCP)-based sequencing of the first and second internal transcribed spacers (ITS-1 and ITS-2) of nuclear ribosomal DNA. The recombinant tropomyosin (rTM) of *A. pegreffii* was expressed, purified and confirmed by immunohistochemistry, sequencing and LC-MS/MS analyses. Immunohistochemistry showed the muscle and the base layer of the third-stage larvae (L3) of *A. pegreffii* as the location of TM in *A. pegreffii*. The molecular relationship of TM of *A. pegreffii* with homologs from other nematodes and crustaceans was inferred from phylogenetic analysis. Immunogenicity of TM from *A. pegreffii* was tested by immunoblotting, which showed that rTM from *A. pegreffii* binds to IgE from sera of patients with allergy to crustaceans. Immunoblotting also showed that the anti-TM monoclonal antibody (MAb) did not recognize rTM from *A. pegreffii*. The rTM from *A. pegreffii* was however, recognized by anti-TM polyclonal antibodies (PAbs) as well as anti-crustacean polyclonal antibodies (PAbs). The detection of specific serum IgE antibody against parasite TM has been proposed as a useful approach for the diagnosis of parasite-induced allergy. The findings of this study merit further exploration of the cross-reactive allergenic proteins of *Anisakis* for improved, future diagnosis of allergenic diseases.

Keywords:

Anisakis pegreffii

Tropomyosin

Shellfish

Allergens

Cross-reactivity

Introduction

The third stage larvae of the nematode worm *Anisakis*, presents a major economic problem for the fish-trade industry (Mattiucci et al. 1997; Mattiucci et al. 2008). They are also identified as potential threats to human health causing anisakiasis and as potential allergenic food-borne pathogens (Bao et al. 2017; Fumarola et al. 2009; Gregori et al. 2015; Kirstein et al. 2010; Mattiucci et al. 2007; Umehara et al. 2007). *Anisakis simplex* third stage larva (L3), is classified as *Anisakis* Type I and has been regarded as the primary cause of anisakiasis, mostly acquired through the ingestion of infected, raw fish (Daschner et al. 2002). However, molecular studies have revealed that *A. simplex* represents at least three sibling species, namely *A. simplex sensu stricto* (s.s) (Nascetti et al. 1986), *A. pegreffii* (Campana-Rouget and Biocca, 1955) and *A. simplex* C (Mattiucci et al. 2002; Mattiucci et al. 2007; Nascetti et al. 1986). It is now established that there is a wide distribution of *A. pegreffii* and *A. simplex* s.s. across the globe. They are characterised on the basis of their genetic and morphological features as well as their ecological traits; such as preference for definitive host. These parasitic nematodes do have geographical distributions; they however, do not have a preference for their distribution. Results of various researches worldwide have also shown *A. simplex* s.s and *A. pegreffii* as the principal aetiologic agents of anisakiasis (Abollo et al. 2003; Mattiucci et al. 1997, Mattiucci et al. 2006; Mattiucci et al. 2008; Mattiucci et al. 2009).

Parasite hosts are constantly being challenged by the large numbers of somatic and excretory/secretory antigens produced by parasites, which in some cases would induce strong allergic reactions in hosts to these antigens (Acevedo and Caraballo 2011). Allergic reactions to *Anisakis* have been reported, and these allergens from *Anisakis*, are considered to be of importance (Albrecht et al. 2008; Anibarro et al. 1998; Kamath et al. 2013; Kim et al. 2005).

Tropomyosin (TM), a major allergen in shellfish, is known to be an isoallergen and panallergen; that is cross-reactive with mite, cockroach and some nematode homologs (Lopata et al. 2009; Lopata et al. 2010). In many species of crustaceans, TM has been identified and found to be implicated in ~ 80 % of cases associated with allergic reactions (Faeste et al. 2003). Functionally, Shellfish TM shares various highly conserved IgE-binding B-cell epitopes. These epitopes are known to induce immune

responses and in addition, also have a high cross-reactivity with TM of invertebrates of diverse species. In *A. simplex*, TM has been described as a major somatic allergen present in third- and fourth-stage larvae (O'Donnell et al. 1989). The proteins of *A. simplex* have been shown to display notable cross-reactivity to proteins of other invertebrates, such as house dust-mites and crustaceans as well as related nematodes (Nieuwenhuizen et al. 2013).

This study therefore aimed to characterize the TM of *A. pegreffii* and to determine whether TM of *A. pegreffii* shares epitopes with TM of *A. simplex*, and other organisms, particularly crustaceans. Results from this work will be used to infer the allergenicity of TM from *A. pegreffii*.

Material and methods

Isolation of anisakid larvae and morphological identification

Live larvae (L3) of *A. pegreffii* were recovered from the uppermost layer of the internal cavity and organs such as gut, pyloric caecum, stomach, gonads and liver of parasitized *Neoplatycephalus richardsoni* (flathead fish). The fish were purchased from a local seafood market in Melbourne and transported on ice to the laboratory for immediate processing. Encapsulated larvae were isolated from the fish and larvae were freed from the host tissue as described by Werner et al. (2011). Briefly, capsules were opened and removed to liberate the larvae. Larvae were thereafter exhaustively washed in phosphate-buffered saline (PBS; pH 7.4) and then fixed in ethanol for subsequent examination. The anterior and posterior parts of each nematode were cut out with a sterile scalpel and preserved in lactophenol for morphological identification. The mid-section (3 mm) of the body was used for subsequent molecular studies. Using the light optical microscope, nematodes were examined morphologically and assigned to a larval 'type' (Cannon, 1977; Shamsi, 2011). Briefly, the presence or absence of mucron at the tail end as well as the length of the ventriculus was assessed to assign the larval type.

Molecular identification of anisakid larvae

Sodium dodecyl-sulphate/proteinase K treatment was used to extract genomic DNA from the mid-section of the larvae. This was purified using a mini-column according to the manufacturer's protocol (Wizard DNA

Clean-Up System, Promega, Fitchburg, WI, USA). Amplification of ITS-1 and ITS-2 nuclear rDNA, from 10–50 ng of genomic DNA, was performed in a PCR reaction using the primer sets SS1/NC13R and SS2/NC2 respectively (Shamsi et al. 2008; Zhang et al. 2008). PCR conditions were as previously described (Jabbar et al. 2012). Known positive controls and negatives (no-DNA) were included for each set of PCRs. Amplicon (5 µl), following PCR, was examined on an ethidium bromide stained 1.5% w/v agarose gel, and thereafter visualized using ultraviolet light.

Single-strand conformation polymorphism (SSCP) and sequencing

In order to determine sequence variation within and among amplicons, ITS-1 and ITS-2 amplified products were subjected to SSCP analysis (Gasser et al. 2006; protocol B). Amplicon representatives for unique SSCP profile for each locus were selected and treated with exonuclease I and shrimp alkaline phosphatase (Fermentas Inc., Glen Burnie, Maryland, USA.) These were subsequently sequenced, using the same PCR primers, in a bi-directional, automated sequencing (Big-Dye terminator v.3.1, Applied Biosystems, Foster City, California, USA). Each sequence quality was assessed by evaluating its electropherogram with the Bio-Edit program (Hall, 1999). Polymorphic sites were assigned using International Union of Pure and Applied Chemistry (IUPAC) codes. Reference sequences, AB277823 (representing *A. pegreffii* L3s from *Scomber japonicus* (pacific chub mackerel); (Umehara et al. 2008) and JQ900763 from *Engraulis spp* (anchiove) (Mattiucci et al. 2013), from the GenBank database were compared with selected sequences.

Preparation of protein extracts

An extract was made from *A. pegreffii* by snap-freezing the posterior and anterior portions of 30 L3s (25 mg) in liquid nitrogen, homogenizing the extract in 2.5 ml of a solution of 0.1 M Tris (hydroxymethyl) aminomethane and 0.5 M glycine buffer (pH 8.7). This extract was then sonicated using a probe sonicator (Branson digital sonifier, 35% amplitude, Pulse On: 15 sec; Pulse Off: 30 sec; three cycles), and thereafter centrifuged for 5 min at 10,000 x g to remove debris. The supernatant was filtered using a 0.45 µm membrane filter (Millipore, Billerica, MA, USA) and supernatant protein concentration was performed using

Millipore concentration tubes (5 kDa cut-off; Amicon Ultra, USA). The total protein concentration of the extract was estimated using the Quick Start Bradford Assay kit (BioRad, USA) and bovine serum albumin (BSA) as a standard. The filtered and concentrated supernatant of the *Anisakis* extract was stored in 1 ml aliquots at -80°C prior to use.

Cloning of the tropomyosin coding sequence

Total RNA was extracted from *A. pegreffii* larvae ($n = 35$) using RNA Mini Kit (Bioline) and cDNA synthesized using a conventional reverse transcription protocol (Bioline) following the manufacturer's instructions. The coding region of TM was PCR-amplified from this cDNA using the oligonucleotide primer pair *A. pegreffii*-TM forward (5'-CGGGATCCATAGACGCAATCAAGAAGAAGATG-3')/ *A. pegreffii*-TM reverse (5'-CGGAGCTCTATTAATATCCAGACAGCTCTTG-3') under the following conditions: an initial denaturation at 94°C for 2 min, subsequent denaturation cycle was at 95°C for 20 s, annealing at 55°C for 15 s and elongation at 72°C for 50 s for 35 cycles, with a final elongation step at 72°C for 7 min. The amplicon (855 bp) was purified using the Qiagen PCR Purification Kit following the manufacturer's instructions and cloned into the sequencing vector, pCR 2.1, using a TOPO TA cloning kit and cloning reaction protocol (Invitrogen, Carlsbad, CA, USA). Subsequently, the coding region for TM was cloned into the expression vector; pRSET A into the *Bam*H1 and *Xho*I sites using T4 DNA Ligase (Invitrogen, Carlsbad, CA, USA). *Escherichia coli* (BL21 strain) was then transformed with this construct by electroporation and incubated in SOC medium (Hanahan, 1983) at 37°C for 4 h. Transformed *E. coli* was grown overnight on Luria Bertani (LB) agar with $100\ \mu\text{g/ml}$ of ampicillin at 37°C . Colonies were screened by PCR using the gene specific oligonucleotide primers for the presence of inserts. Plasmid DNA was purified from overnight cultures using the QIAprep SPIN reaction kit (Qiagen, Germany) and sequenced to verify its integrity. Cells were stored in glycerol stock at -80°C .

Recombinant TM was expressed at 37°C in LB medium (containing $100\ \mu\text{g/ml}$ of ampicillin) and grown until the culture reached middle to late log phase, after which the culture was induced with $0.1\ \text{mM}$ IPTG. Recombinant TM was extracted from *E. coli* using lysis buffer (25 mM Tris-HCl, 300 mM NaCl, 1 mM imidazole, 2 mg/ml of lysozyme, pH 8) and purified employing a nickel-charged metal chelate affinity chromatography and ion exchange chromatography columns (GE Healthcare, USA). Purified protein was then stored in 1 ml aliquots at -80°C prior to use.

SDS–PAGE analysis

Electrophoresis was performed to analyse the protein repertoire in the parasite extract (Abdel Rahman et al. 2010; Abdel Rahman et al. 2013). The extract (12 µg) was briefly heated in Laemmli buffer with dithiothreitol, and ~ 10 µg of protein were loaded on to a 12% bis-acrylamide gel. The protein components were resolved at 170 V until the tracking dye reached the base. The separated proteins were detected by staining with Coomassie brilliant blue R250 (BioRad, Hercules, CA, USA).

Immunoblotting with monoclonal, polyclonal anti-tropomyosin and anti-crustacean antibody

To confirm the presence of native (n-) and recombinant (r-) TM of *A. pegreffii*, poly- and mono-clonal antibodies were used. Four micrograms of *A. pegreffii* protein extract and purified proteins were resolved by SDS–PAGE. The Semi-dry TransBlot Apparatus (BioRad, Hercules, CA, USA) was used to transfer protein onto activated polyvinylidene fluoride (PVDF) membrane. The membranes were then blocked in 5% (w/v) skim milk powder (SMP) in PBS containing 0.05% Tween-20 (PBS-T). The rTM membrane was exposed to (1) Monoclonal anti-crustacean TM antibody, MAC 141 (ab50567; Abcam, Cambridge, MA, USA.) diluted 1:6,000 in 1% SMP in PBS-T and subsequently to rabbit anti-mouse IgG antibody conjugated to HRP (Sigma, St. Louis, MO, USA) diluted 1:8,000. (2) An in-house generated rabbit polyclonal anti-crustacean tropomyosin antibody (Kamath et al., 2014.) diluted 1:10,000 and then to goat anti-rabbit IgG antibody conjugated with HRP (Promega, USA.) diluted 1:40,000. The n-TM was exposed to the in-house generated rabbit polyclonal anti-crustacean tropomyosin antibody as described for rTPM. After the necessary washes (3X) using PBS-T, antibody binding was observed on the membrane using two methods: (a) enhanced chemiluminescent technique, as previously reported (Abdel Rahman *et al.*, 2010, 2011). Briefly, blots were either incubated with chemiluminescent substrate (Sigma, St. Louis, MO, USA) and thereafter exposed to photographic film (GE Healthcare Biosciences, USA.) or (b) membrane was immersed in TMB (3,3', 5,5'-Tetramethylbenzidine) chromogenic HRP-substrate for 5 min, rinsed in distilled water and antibody-binding protein bands detected thereafter. The rTMs of shellfish were used as positive controls (obtained from Molecular Allergy Laboratory of Andreas Lopata).

Immunoblotting with IgE in human patient sera

To determine the allergenicity of rTM of *A. pegreffii*, IgE antibody reactivity was assessed by immunoblotting using a pool of patients sera with confirmed shellfish allergy. Serum samples were obtained from patients with a history of allergic reactions to shellfish and/or positive by SPT and/or ImmunoCAP to prawn, crab or lobster, (mean age 32 ± 10.5 years). A serum from a healthy donor was the negative control used. Informed, written consent was obtained from all study subjects and experimental protocols were approved by The Alfred Hospital Research Ethics Committee (Project number 192/07) and the Monash University Human Ethics Committee (MUHREC CF08/0225).

IgE immunoblotting was conducted as previously described (Abdel Rahman et al. 2013). Briefly, the proteins on the membrane were first incubated with the serum pool (1:10 in 1% SMP, PBS-T) and thereafter, with rabbit anti-human IgE polyclonal antibody (DAKO Corporation, Carpinteria, CA, USA.) and goat anti-rabbit IgG labelled with HRP (Promega, USA.). IgE reactivity was then assessed.

Immunofluorescence staining and microscopy

L3s of *A. pegreffii* were placed in a small plastic cassette and embedded in optimal cutting temperature (OCT) compound medium. The OCT-solidified sample was frozen and cut into serial sections (7-10 μm thick) using a microtome cryostat machine. Sections were melted on to super frost slides and labelled. Drying of sections was by placing slides in blocks and leaving at 4°C overnight. Sections were thereafter fixed by placing slides into cold acetone (100%) for 10 min and allowed to dry. To dissolve the OCT medium, the slides were put into a staining chamber containing PBS for 10 min. For the immunofluorescent labelling step, 200 μl of rabbit polyclonal anti-TM antibody solution (primary antibody) were added directly to slides to cover the whole sections and incubated at 4°C overnight, followed by a PBS wash for 10 min. Subsequently, 200 μl of HRP mouse anti-rabbit IgG secondary antibodies conjugated to FITC were added directly to slides and incubated at 24 °C for 30 min, followed by a PBS wash for 10 min. Detection was carried out using 20 μl of DAB substrate solution for 10 min, and slides were washed in PBS for 10 min to

remove the excess of this solution. The slides were kept in a chamber in PBS overnight and then dried. Glycerol solution (50%; 5-10 μ l) was pipetted on to the section and cover-slipped and allowed to dry. Images were then taken using a fluorescent microscope (Nikon) and studied.

Phylogenetic analyses and amino acid alignment

Representative sequences obtained from Genbank for ITS-1 and ITS-2 respectively (*Anisakis simplex* C-AY826722.1, *A. simplex*- EU624342, *Anisakis* spp-JN005759.1, *Anisakis ziphidarum*-AY826725.1, *Anisakis brevispiculata*- AB592794.1, *Anisakis typica*- JX848663.1, JX848680.1; *Anisakis paggiae*- AB592797.1, GU295975.1; *Anisakis physeteris*- EU718475.1, JX523714.1; *Pseudoterranova decipiens*- AJ413968.1, AJ413967.1 and *Contraecaecum rudolphii* A- DQ316967.1, DQ316969.1) and the TM sequences obtained from the National Centre for Biotechnology Information (NCBI) for *A. simplex*, *Ascaris lumbricoides*, *Onchocerca volvulus*, *Caenorhabditis elegans*, *Drosophila melanogaster*, *Penaeus monodon*, *Habronattus americanus*, *Periplaneta americana*, *Hediste diversicolor*, *Paralithodes camtschaticus*, *Homo sapiens* and *Gallus gallus* (Uniprot accession IDs, JF902160, FJ655903, L41633.1, CELTMY1B, NM_169633, AY827100, AF034954.1, Y14854.1, AF216518.1, AB270632.1, J00910.1 and M19267.1, respectively) were aligned with the inferred amino acid ITS-1, ITS-2 and TM of *A. pegreffii* respectively, employing ClustalW alignment in MEGA version. 6.0. Phylogenetic analyses of sequence data for the above-named species were performed using the maximum likelihood statistical method. The following default parameters were used for the phylogenetic tree construction: Poisson model, bootstrap (10,000 replicates; random seed) and complete deletion of gaps (Tamura et al. 2013).

In-gel tryptic digestion and LC-MS/MS analysis

Tryptic digestion was performed by excising a band corresponding to 37 kDa in SDS-PAGE protein analysis of *A. pegreffii* crude extract. The gel band was washed and destained twice in 50% acetonitrile with 50 mM triethylammonium bicarbonate (TEAB) and dehydrated with acetonitrile until the gel plug turned opaque. The gel plug was then rehydrated and incubated in reduction buffer, consisting of 50 mM tris (2-carboxyethyl) phosphine (TCEP) in 50 mM TEAB at 60 °C. Incubation was for 20 min with 20-50 μ l of reduction buffer to cover gel plug. This was followed by alkylation using 100 mM iodoacetamide in 50 mM

TEAB at 24 °C in the dark. Sample was washed in 50 mM TEAB twice and dehydrated with acetonitrile. Digestion of the gel plug was with 1 µg of molecular-grade trypsin (Sigma-Aldrich) at 37 °C overnight. Tryptic peptides were extracted from the gel, acidified with formic acid and then analysed. Digested peptides were injected into the column, separated using a gradient of acetonitrile in water and analysed by liquid chromatography/mass spectroscopy (LC-MS/MS, using a Q-Exactive mass spectrometer (Thermo Scientific). The derived peak list was searched using the Mascot search engine (version 2.4; Matrix Science, London, UK) against the UniProt database. The TM from *A. pegreffii* was identified by peptide sequence identity to TM in this database in two separate experiments.

Results

Verification of the identity of L3s as *A. pegreffii*

The anisakid larvae from *N. richardsoni* (flathead fish) used in this study were individually identified as *Anisakis* larval type 1 (Cannon, 1977; Shamsi et al. 2011), which is consistent with *A. pegreffii*. The sequencing of ITS-1 and ITS-2 from such larvae supported this identification, with these sequences being 99% identical to two reference sequences (Fig 1A, B). Phylogenetic analysis showed the concatenated ITS-1 and ITS-2 sequences representing *A. pegreffii* (those determined herein) grouped together to the exclusion of other members of the Anisakidae family (Fig 2A, B).

A. pegreffii tropomyosin (TM) – characterisation, phylogenetic relationship and localisation

The cDNA encoding TM of *A. pegreffii* is 805 bp in length and is 99% similar to that of *A. simplex*.

A. pegreffii TM is 284 amino acids in length and has an estimated molecular mass of 33 kDa (Figs 3A, B).

The signature patterns for TM are L-K-E-A-E-x-R-A-E, indicated in red (underlined), conserved in the C-terminal region of *A. pegreffii* TM, and the highly conserved N-terminal motif DAIKKK, which binds actin (underlined in yellow).

Phylogenetic analysis of TM homologues from *A. pegreffii* and other organisms, including *A. simplex*, *A. lumbricoides*, *O. volvulus*, *C. elegans*, *D. melanogaster*, *P. monodon*, *H. americanus*, *P. americana*, *H. diversicolor*, *P. camtschaticus*, humans and chickens is shown in Fig 4. Uniprot Accession IDs, JF902160, FJ655903, L41633.1, CELTMY1B, NM_169633, AY827100, AF034954.1, Y14854.1, AF216518.1, AB270632.1, J00910.1, M19267.1, respectively shows that *Anisakis* TM form a unique clade, clustering

closely with *A. lumbricoides*. Interestingly, the TM representing shellfish is more closely related to TM of *Anisakis* spp. than to other nematodes such as *C. elegans* and *O. volvulus*, which may explain their cross-reactivity.

An independent analysis of the somatic extract of *A. pegreffii* by LC-MS/MS combined with a database search confirmed the presence of *A. pegreffii* TM with a match of 14 peptides and sequence coverage of 52% to *A. simplex* TM Anis 3 (accession number: Q9NAS5), and a match of two peptides and sequence coverage of 15% to TM of *O. volvulus* (*Ov-tmy-1*; accession number: Q25632; Fig 5).

To localize TM in *A. pegreffii*, L3 larvae were subjected to immunofluorescent staining with an anti-TM polyclonal antibody. This staining revealed preferential binding to- and intense labelling of native TM in the cuticle of *A. pegreffii* L3 larvae (Fig 6).

SDS-PAGE and immunoblot analyses of *A. pegreffii* and/or shellfish proteins

The analysis of native extracts from shellfish and *A. pegreffii* showed a variety of proteins ranging between 10 kDa to 250 kDa (Figs 7A and B). Whole protein extracts from shellfish and *A. pegreffii* showed many intense bands significantly in the size between 30-50 kDa on a typical SDS-PAGE gel. Distinct protein bands at 37-39 kDa were observed for the shellfish extracts. The rTM protein of *A. pegreffii* runs slightly slower than the predicted molecular weight (Figs 7B and 7C).

In the immunoblot analysis, a distinct band of 37 kDa was detected in crustacean extract using the monoclonal anti-TM antibody, which represented a positive control (Fig 8A). However, no band was detected in *A. pegreffii* extract, by this antibody, even using a prolonged exposure time. Using anti-TM crustacean polyclonal antibody, a distinct band of 37 kDa was observed in the crustacean TM (Fig 8A) and a single band of the same size was detected in the crude extract of *A. pegreffii* (lane 6; Fig. 8B). The anti-TM crustacean polyclonal antibody in addition, also recognised a band of ~ 37 kDa in *A. pegreffii* extract (lane 6; Fig 8C). A subsequent immunoblot analysis of rTM of *A. pegreffii* probed with sera from patients with shellfish allergy revealed IgE antibody binding (Fig 9). Most of the sera (60%) showed some or faint reactivity.

Discussion

Consumption of raw or undercooked seafood contaminated with *Anisakis* L3s can result in anisakiasis and/or allergic reaction in humans (Daschner et al. 2002). Such allergic responses is characterised by high level production of IgE antibodies to both somatic and/or excretory/secretory proteins of *Anisakis* L3s. Diagnostic testing is by detection of specific IgE antibody binding to crude extract of parasite or the recombinant proteins derived from such allergen genes.

TM is the major allergen protein of invertebrates, which has epitopes, featuring high cross-reactivity among invertebrate TMs from other species and which is suspected to elicit hypersensitivity reactions in atopic individuals. Due to its wide distribution, it is considered a pan-allergen (Reese et al. 1999; Acevedo and Caraballo, 2011).

In this study, immunoblotting results revealed that the recombinant *A. pegreffii* TM protein was not recognized by an anti-TM monoclonal antibody. Thus, we demonstrated that the specific epitope, to which the crustacean anti-TM monoclonal antibody reacts, is distinct in sequence from *Anisakis* TM, which is consistent with the findings from the phylogenetic analysis (Fig. 4). By contrast, immunoblotting using anti-TM and anti-crustacean polyclonal antibodies showed reactivity with *A. pegreffii* TM. Polyclonal antibodies usually recognize multiple epitopes of a protein. Hence overall reactivity, with the use of a polyclonal antibody, may not be greatly affected by small changes in the structure of single or a small number of epitopes. (Lipman et al. 2005). In addition, to confirm that the rTM of *A. pegreffii* retained the allergenic characteristics of natural *A. pegreffii* TM, IgE in sera from shellfish allergic patients reacted with rTM of *A. pegreffii*. This result agrees strongly with other studies that have reported sera reaction from allergic patients with *A. simplex* TM (Acevedo and Caraballo, 2011). Although TM of *A. pegreffii* did not react with all patient sera, this result validates cross-reactivity between TM of *A. pegreffii* and shellfish allergic patient sera. The close relatedness of some of these species can be observed in the phylogenetic tree (Fig. 4). Phylogenetic analysis showed that TM of *A. pegreffii* has closer relationship to TM from other nematodes and crustaceans but revealed less similarity to TM from vertebrates (chickens and humans). These results are in agreement with the proposal that TM is a pan-allergen.

We localized TM in *A. pegreffii* for the first time using a immunohistochemical approach. TM was detected in the muscles and under the basal layer of the cuticle of *A. pegreffii* L3 larvae using anti-TM

polyclonal antibodies. This finding agrees with several studies that have reported the detection of TM in the muscles of parasites (Jenkins et al. 1998; Macgregor and Shore 1990). rTM protein was observed to be larger than the native one and migrated slower on SDS-PAGE than its predicted mass of 37 kDa. The slower run is a consequence of the higher mass of the recombinant protein due to the N-terminal extension encoded by the expression vector.

Sequence similarity searches showed that *A. pegreffii* TM has the highest identity to the alpha-TM isoform from L3s of *A. simplex* (98%) and *A. lumbricoides* (84%), respectively. The deduced amino acid sequence of *A. pegreffii* L3 TM has revealed that the TM signature, L-K-E-A-E-x-R-A-E, is conserved in the C-terminal region at position 231–239, as is the highly conserved N-terminal motif D-A-I-K-K-K, which is significant for actin binding. Findings from this study agree with several studies reporting similar results in other organisms (Asturias et al. 2000; Santos et al. 1999; Santos et al. 2008). Furthermore, a potential N-linked glycosylation site N-R-S in TM of *A. pegreffii* was identified from the data obtained from this study.

The protein sequence of TM from *A. pegreffii* L3 showed a sequence of seven heptad-repeating amino acids residues usually labelled *abcdefg*. Results similar to this, were obtained by Asturias *et al.* (2000) who investigated the stage 3 larvae of *A. simplex* rTM and showed that in the sequence ‘a’ and ‘d’ amino acids, are the hydrophobic positions of each chain. Interactions of these amino acids with each other result in the parallel α -helical coiled coil chain for TM (Mason and Arndt, 2004). This report presents evidence of high indications of α -helical coiled-coil structures of *A. pegreffii*'s rTM. This study confirms cross-reactivity between *A. pegreffii* and shellfish TM. It also demonstrates that the specific epitope to which the crustacean anti-TM monoclonal antibody reacts is not conserved in *Anisakis*; however, the nematode TM tested share one or more epitopes with crustacean TM, as polyclonal antibodies can recognise TM from both species.

In conclusion, we have confirmed the presence of TM protein in *A. pegreffii* with anti-TM crustacean polyclonal antibodies. In contrast, *A. pegreffii* TM was not recognized by immunoblotting with an anti-crustacean TM monoclonal antibody (MAb). This information suggests that *A. pegreffii* TM share one or more epitopes with crustacean TM, as the PABs is able to recognise multiple epitopes on any one antigen, while they lack specific antigenic determinant, defined by the anti-TM monoclonal antibody present in crustacean TM. The result of this study showed that the size of *A. pegreffii* -TM is similar with previously

studied *A. simplex* and *A. lumbricoides* TM, as may be expected by the close relationship between these species. Furthermore, results obtained from this study indicate that the rTM of *A. pegreffii* binds to IgE from different sera samples of crustacean allergic patients confirming cross reactivity between nematodes and different classes of shellfish. Previous studies had shown the function of TM protein to be associated with motility. In the current study, we substantiated the evidence of the association of TM proteins with motility role by determining its localisation in *A. pegreffii* by immunohistochemistry. This showed *A. pegreffii* -TM to be located in both the muscles and under the basal layer of the cuticle in the *A. pegreffii* L3 anatomy. Future studies should explore the cross-reactivity of the allergenic protein repertoire of *Anisakis* in more detail in order to work toward improving diagnosis of allergenic diseases in humans.

References

- Abdel Rahman AM, Kamath S, Lopata AL, Helleur RJ 2011 Biomolecular characterization of allergenic proteins in snow crab (*Chionoecetes opilio*) and de novo sequencing of the second allergen arginine kinase using tandem mass spectrometry *Proteomics* 74: 231-241
- Abdel Rahman AM, Kamath SD, Gagne S, Lopata AL, Helleur R 2013 Comprehensive proteomics approach in characterizing and quantifying allergenic proteins from northern shrimp: toward better occupational asthma prevention *J Proteome Res* 12: 647-656
- Abdel Rahman AMA, Kamath S, Lopata AL, Helleur RJ 2010 Analysis of the allergenic proteins in black tiger prawn (*Penaeus monodon*) and characterization of the major allergen tropomyosin using mass spectrometry *Rapid Commun Mass Spectrom* 24: 2462-2470
- Abollo E, Paggi L, Pascual S, D'Amelio S 2003 Occurrence of recombinant genotypes of *Anisakis simplex* ss and *Anisakis pegreffii* (Nematoda: Anisakidae) in an area of sympatry *Infect Genet Evol* 3: 175-181
- Acevedo N, Caraballo L 2011 IgE cross-reactivity between *Ascaris lumbricoides* and mite allergens: possible influences on allergic sensitization and asthma *Parasite Immunology* 33 309-321
- Albrecht M, Alessandri S, Conti A, Reuter A, Lauer I, Vieths S, Reese G 2008 High-level expression purification and physico- and immunochemical characterisation of recombinant Pen a 1: a major allergen of shrimp *Mol Nutr food res* 52 Suppl 2: 186-95
- Anibarro B, Seoane FJ 1998 Occupational conjunctivitis caused by sensitization to *Anisakis simplex* *J Allergy Clin Immunol* 102: 331-332
- Asturias JA, Eraso E, Martinez A 2000 Cloning and high level expression in *Escherichia coli* of an *Anisakis simplex* tropomyosin isoform *Mol Biochem Parasitol* 108: 263-266
- Bao M, Pierce GJ, Pascual S, Gonzalez-Munoz M, Mattiucci S, Mladineo I, Cipriani P, Buselic I, Strachan NJ 2017 Assessing the risk of an emerging zoonosis of worldwide concern: anisakiasis. *Sci Rep* 7:43699
- Campana-Rouget Y, Biocca E 1955 A new species of *Anisakis* in a Mediterranean seal *Ann Parasitol Hum Comp* 30:477-480
- Cannon LRG 1977 Some ecological relationships of larval ascaridoids from south-eastern Queensland marine fishes *International Journal of Parasitology* 7:227-232

- Daschner A, Cuéllar C, Sánchez-Pastor S, Pascual CY, Martín-Esteban M 2002 Gastro-allergic anisakiasis as a consequence of simultaneous primary and secondary immune response. *Parasite Immunol* 24: 243-251.
- Faeste CK, Wiker HG, Løvik M, Egaas E 2003 Hidden shellfish allergen in a fish cake. *Allergy* 58:1204-1205
- Fumarola L, Monno R, Ierardi E, Rizzo G, Giannelli G, Lalle M, Pozio E 2009 *Anisakis pegreffii* etiological agent of gastric infections in two Italian women *Foodborne Pathog Dis* 6: 1157-1159
- Gasser RB, Hu M, Chilton NB, Campbell BE, Jex AJ, Otranto D, Cafarchia C, Beveridge I, Zhu XQ 2006 Single-strand conformation polymorphism (SSCP) for the analysis of genetic variation *Nature Protocols* 1: 3121-3128
- Gregori M, Roura Á, Abollo E, González AF, Pascual S 2015 *Anisakis simplex* complex (Nematoda: Anisakidae) in zooplankton communities from temperate NE Atlantic waters, *Journal of Natural History*, 49:13-14, 755-773, DOI: 10.1080/00222933.2014.979260
- Hall TA 1999 BioEdit: a user-friendly biological sequence alignment editor and analysis program for Windows 95/98/NT *Nucleic Acids Symposium Series* 41: 95–98
- Hanahan D 1983 Studies on transformation of *Escherichia coli* with plasmids *Mol Biol* 166:557-80
- Jabbar A, Khoon AT, Hui TX, Schaeffner BC, Jex AR, Nolan MJ, Lopata AL, Gasser RB, Beveridge I 2012 Mutation scanning-based analysis of anisakid larvae from *Sillago flindersi* from Bass Strait Australia *Electrophoresis* 33: 499-505
- Kamath SD, Abdel Rahman AM, Komoda T, Lopata AL 2013 Impact of heat processing on the detection of the major shellfish allergen tropomyosin in crustaceans and molluscs using monoclonal antibodies *Food Chem* 141 (4): 4031-9
- Kamath SD, Thomassen MR, Saptarshi SR, Nguyen HM, Aasmoe L, Bang BE, Lopata AL 2014 Molecular and immunological approaches in quantifying the air-borne food allergen tropomyosin in crab processing facilities. *International journal of hygiene and environmental health*. 217(7):740-50

- Kim JS, Kim KH, Cho S, Park HY, Cho SW, Kim YT, Joo KH, Lee JS 2005 Immunochemical and biological analysis of allergenicity with excretory-secretory products of *Anisakis simplex* third stage larva Int Arch Allergy Immunol 136(4):320-328
- Kirstein F, Horsnell WG, Nieuwenhuizen N, Ryffel B, Lopata AL, Brombacher F 2010 *Anisakis pegreffii*-induced airway hyperresponsiveness is mediated by gamma interferon in the absence of interleukin-4 receptor alpha responsiveness Infect Immun 78: 4077-4086
- Lipman NS, Jackson LR, Trudel LJ, Weis-Garcia F 2005 Monoclonal Versus Polyclonal Antibodies: Distinguishing Characteristics Applications and Information Resources J ILAR 46: 258-268
- Lopata AL, Lehrer SB 2009 New insights into seafood allergy Current Opinion in Allergy and Clinical Immunology 9: 270-277
- Lopata AL, O'Hehir RE, Lehrer SB 2010 Shellfish allergy Clin Exp Allergy 40: 850-858
- Macgregor AN, Shore SJ 1990 Immunocytochemistry of cytoskeletal proteins in adult *Schistosoma mansoni* Int J Parasitol 20: 279-284
- Mason JM, Arndt KM 2004 Coiled coil domains: stability specificity and biological implications Chembiochem 5:170-176
- Mattiucci S, Nascetti G 2006 Molecular systematics phylogeny and ecology of anisakid nematodes of the genus *Anisakis* Dujardin 1845: an update Parasite 13: 99-113
- Mattiucci S, Fazii P, De Rosa A, Paoletti M, Megna AS, Glielmo A, De Angelis M, Costa A, Meucci C, Calvaruso V, Sorrentini I, Palma G, Bruschi F, Nascetti G 2013 Anisakiasis and gastroallergic reactions associated with *Anisakis pegreffii* infection Italy Emerg Infect Dis 19: 496-499
- Mattiucci S, Nascetti G 2007 Genetic diversity and infection levels of anisakid nematodes parasitic in fish and marine mammals from Boreal and Austral hemispheres Vet Parasitol 148: 43-57
- Mattiucci S, Nascetti G 2008 Advances and trends in the molecular systematics of anisakid nematodes with implications for their evolutionary ecology and host-parasite co-evolutionary processes Adv Parasitol 66:47-148
- Mattiucci S, Nascetti G Cianchi R, Paggi L, Arduino P, Margolis L, Bratney J, Webb S, Damelio S, Orecchia P, Bullini L 1997 Genetic and ecological data on the *Anisakis simplex* complex with evidence for a new species (Nematoda Ascaridoidea Anisakidae) J Parasitol 83: 401-416

- Mattiucci S, Paggi L, Nascetti G, Portes Santos C, Costa G, Di Benedetto AP, Ramos R, Argyrou M, Cianchi R, Bullini L 2002 Genetic markers in the study of *Anisakis typica* (Diesing 1860): larval identification and genetic relationships with other species of *Anisakis* Dujardin 1845 (Nematoda: Anisakidae) Syst Parasitol 51: 159-170
- Mattiucci S, Paoletti M, Webb SC 2009 *Anisakis nascettii* n sp (Nematoda: Anisakidae) from beaked whales of the southern hemisphere: morphological description genetic relationships between congeners and ecological data Syst Parasitol 74: 199-217
- Nascetti G, Paggi L, Orecchia P, Smith JW, Mattiucci S, Bullini L 1986 Electrophoretic studies on the *Anisakis simplex* complex (Ascaridida:Anisakidae) from the Mediterranean and North-East Atlantic Int J Parasitol 16: 633-640
- Nieuwenhuizen NE, Lopata AL 2013 *Anisakis* - A food-borne parasite that triggers allergic host defences Int J Parasitol 43: 1047-1057
- O'Donnell IJ, Dineen JK, Wagland BM, Letho S, Dopheide TAA, Grant WN, Ward CW 1989 Characterization of the major immunogen in the excretory secretory products of exsheathed 3rd-stage larvae of *Trichostrongylus colubriformis* Int J Parasitol 19: 793-802
- Reese G, Ayuso R, Lehrer SB 1999 Tropomyosin: an invertebrate pan-allergen Int Arch Allergy Immunol 119: 247-258
- Santos AB, Chapman MD, Aalberse RC, Vailes LD, Ferriani VP, Oliver C, Rizzo MC, Naspitz CK, Arruda LK 1999 Cockroach allergens and asthma in Brazil: identification of tropomyosin as a major allergen with potential cross-reactivity with mite and shrimp allergens J Allergy Clin I, Aalberse RC, Chapman MD, Arruda LK 2008 Cross-reactive IgE antibody responses to tropomyosins from *Ascaris lumbricoides* and cockroach J Allergy Clin Immunol 121: 1040-1046
- Shamsi S, Eisenbarth A, Saptarshi S, Beveridge I, Gasser RB, Lopata AL 2011 Occurrence and abundance of anisakid nematode larvae in five species of fish from southern Australian waters Parasitol Res 108:927-934
- Shamsi S, Gasser R, Beveridge I, Shabani AA 2008 *Contraecaecum pyripapillatum* n sp (Nematoda: Anisakidae) and a description of *C multipapillatum* (von Drasche 1882) from the Australian pelican *Pelecanus conspicillatus* Parasitol Res 103: 1031-1039

- Shanti KN, Martin BM, Nagpal S, Metcalfe DD, Rao PVS 1993 Identification of tropomyosin as the major shrimp allergen and characterization of its IgE-binding epitopes *J Immunol* 151: 5354-5363
- Sohn WM, Kang JM, Na BK, Molecular analysis of *Anisakis* type I larvae in marine fish from three different sea areas in Korea 2014 *Korean J Parasitol* 52: 383-389
- Thompson JD, Higgins DG, Gibson TJ 1994 ClustalW: Improving the sensitivity of progressive multiple sequence alignment through sequence weighting position specific gap penalties and weight matrix choice *Nucleic Acids Research* 22: 4673-4680
- Umehara A, Kawakami Y, Araki J, Uchida A 2007 Molecular identification of the etiological agent of the human anisakiasis in Japan *Parasitol Int* 56: 211-215
- Umehara A, Kawakami Y, Araki J, Uchida A 2008 Multiplex PCR for the identification of *Anisakis simplex* sensu stricto *Anisakis pegreffii* and the other anisakid nematodes *Parasitol Int* 57: 49-53
- Werner MT, Fæste CK, Levsen A, Egaas E 2011 A quantitative sandwich ELISA for the detection of *Anisakis simplex* protein in seafood *Eur Food Res Technol* 232: 157
- Zhang L, Hu M, Shamsi S, Beveridge I, Li H, Xu Z, Li L, Cantacessi C, Gasser RB 2007 The specific identification of anisakid larvae from fishes from the Yellow Sea China using mutation scanning-coupled sequence analysis of nuclear ribosomal DNA *Mol Cell Probes* 21: 386-390

Legends to Figures

Fig. 1 (a) ITS-1 and (b) ITS-2 sequences of *Anisakis pegreffii* compared with two reference *A. pegreffii* sequences, JQ900763.1 (Mattiucci et al 2013); AB277823.1 (Umehara et al 2008)

Fig. 2 The phylogenetic analysis of (a) ITS-1 and (b) ITS-2 sequences of *Anisakis pegreffii* and some members of the Anisakidae family

Fig. 3 (a) The cDNA and (b) the amino acid sequences encoding tropomyosin of *Anisakis pegreffii*. The signature patterns for TM are L-K-E-A-E-x-R-A-E, indicated in red (underlined), conserved in the C-terminal region of *A. pegreffii* TM, and the highly conserved N-terminal motif DAIKKK, which binds actin (underlined in yellow)

Fig. 4 Phylogenetic analysis of tropomyosin homologues of *Anisakis pegreffii* and other organisms, including *Anisakis simplex*, *Ascaris lumbricoides*, *Onchocerca volvulus*, *Caenorhabditis elegans*, *Drosophila melanogaster*, *Penaeus monodon* (Giant Tiger Prawn), *Homarus americanus* (American Lobster), *Periplaneta americana* (American Cockroach), *Haliotis diversicolor* (Coloured Abalone), *Paralithodes camtschaticus* (Red King Crab), *Homo sapiens* (Human) and *Gallus gallus domesticus* (Chicken).

Fig. 5 Peptides of tropomyosin protein identified by LC-MS/MS from somatic extracts of *A. pegreffii* yellow (peptides matching *Anisakis simplex* tropomyosin protein); Green (peptides matching *Onchocerca volvulus* tropomyosin protein).

Fig. 6 Localization of tropomyosin protein in the cuticle of *Anisakis pegreffii* L3 larvae by Immunofluorescent staining. Treated samples = sections incubated with anti-tropomyosin antibody

Fig. 7 (a) SDS-PAGE Gel of the recombinant tropomyosin protein of *Anisakis pegreffii*; (b) Visualization of the sizes of recombinant tropomyosin proteins of a crustacean and *Anisakis pegreffii* using SDS-PAGE (c) Immunoblot analysis using anti-tropomyosin polyclonal antibody

Fig. 7a Lane 1=Molecular marker, Lane 2=crude extract of *Anisakis pegreffii*; Lane 3=Recombinant tropomyosin of *Anisakis pegreffii*; **Figs 7b & 7c:** Lane 1=Molecular marker, Lane 2=positive control (recombinant tropomyosin of Black tiger 37kDa); Lane 3=Fish

extract protein (negative control); Lane 4=crude extract of *Anisakis pegreffii* (41kDa) Lane 5=Recombinant tropomyosin protein of *Anisakis pegreffii* (44kDa)

Fig. 8 Immunoblot analysis with (a) Monoclonal (b) Polyclonal anti-tropomyosin antibodies and (c) Polyclonal anti-crustacean antibody against *Anisakis pegreffii* crude extract. L=Lane; L1= Molecular marker, L2=Black Tiger (positive control), L3=King Prawn (positive control), L4=Green prawn (positive control), L5=Banana prawn (positive control), L6=*Anisakis pegreffii*, L7=Phosphate buffered saline (PBS; negative control).

Fig. 9 Immunoblot analysis of recombinant tropomyosin of *Anisakis pegreffii* probed with sera from shellfish-allergic patients Keys: L=lane; M= Molecular marker; L1-10=Patients' sera (DM32, GC10, AN01, CF 31, JP47, CF31, DG46, KF41 and EV09 respectively); L11=Fish extract; L12=Negative control. This figure shows *Anisakis pegreffii* recombinant protein tropomyosin allergen at 44 kDa in L1, 2, 5, 6, 7, 8 and 9. The positive bands are shown in the red box.

(a)

```
ITS-1 A.p      1  tcataatcgagcgaatccaaaacgaacgaaaaagtctcccaacgtgcataccttccattt
JQ900763.1    1  -----cgagcgaatccaaaacgaacgaaaaagtctcccaacgtgcataccttccattt
AB277823.1    1  tcattatcgagcgaatccaaaacgaacgaaaaagtctcccaacgtgcataccttccattt

ITS-1 A.p      61  gcatggttgttgtgagccacatggaaactcgtacacacggtggtggcagccgtctgctgtgc
JQ900763.1    54  gcatggttgttgtgagccacatggaaactcgtacacacggtggtggcagccgtctgctgtgc
AB277823.1    61  gcatggttgttgtgagccacatggaaactcgtacacacggtggtggcagccgtctgctgtgc

ITS-1 A.p     121  ttttttaggcagacaatggcttacgagtgcccggtgtgcttgttgaacaacgggtgaccaa
JQ900763.1   114  ttttttaggcagacaatggcttacgagtgcccggtgtgcttgttgaacaacgggtgaccaa
AB277823.1   121  ttttttaggcagacaatggcttacgagtgcccggtgtgcttgttgaacaacgggtgaccaa

ITS-1 A.p     181  tttggcgtctacgcccgtatctagcttctgcctggaccgctcagttgogatgaaagatgccc
JQ900763.1   174  tttggcgtctacgcccgtatctagcttctgcctggaccgctcagttgogatgaaagatgccc
AB277823.1   181  tttggcgtctacgcccgtatctagcttctgcctggaccgctcagttgogatgaaagatgccc

ITS-1 A.p     241  agaaagttcctttgttttggctgctaatacatcattgatgagcagcagcttaaggcagagt
JQ900763.1   234  agaaagttcctttgttttggctgctaatacatcattgatgagcagcagcttaaggcagagt
AB277823.1   241  agaaagttcctttgttttggctgctaatacatcattgatgagcagcagcttaaggcagagt

ITS-1 A.p     301  cgagcagacttaatgagccacgctaggtggccgccccaaaacccaaaacacaaccggtctat
JQ900763.1   294  cgagcagacttaatgagccacgctaggtggccgccccaaaacccaaaacacaaccggtctat
AB277823.1   301  cgagcagacttaatgagccacgctaggtggccgccccaaaacccaaaacacaaccggtctat

ITS-1 A.p     361  ttgacattgttattttcattgtatgtgttgaataatgtactaatcttggcgggtgggt-----
JQ900763.1   354  ttgacattgttattttcattgtatgtgttgaataatgtactaatcttggcgggtgggtact-
AB277823.1   361  ttgacattgttattttcattgtatgtgttgaataatgtactaatcttggcgggtgggtact-
```

(b)

```
ITS-2 A.p      1  cattgcgctatcgggttcattcccgatggcacgctctggctgaggggtcgaattacgggtgaa
JQ900763      1  cattgcgctatcgggttcattcccgatggcacgctctggctgaggggtcgaattacgggtgaa
AB277823      1  cattgcgctatcgggttcattcccgatggcacgctctggctgaggggtcgaattacgggtgaa

ITS-2 A.p      61  ctgtcttcacgggttttctggactgtgaagcattcggcaagcaattgctgttgtgttgtt
JQ900763      61  ctgtcttcacgggttttctggactgtgaagcattcggcaagcaattgctgttgtgttgtt
AB277823      61  ctgtcttcacgggttttctggactgtgaagcattcggcaagcaattgctgttgtgttgtt

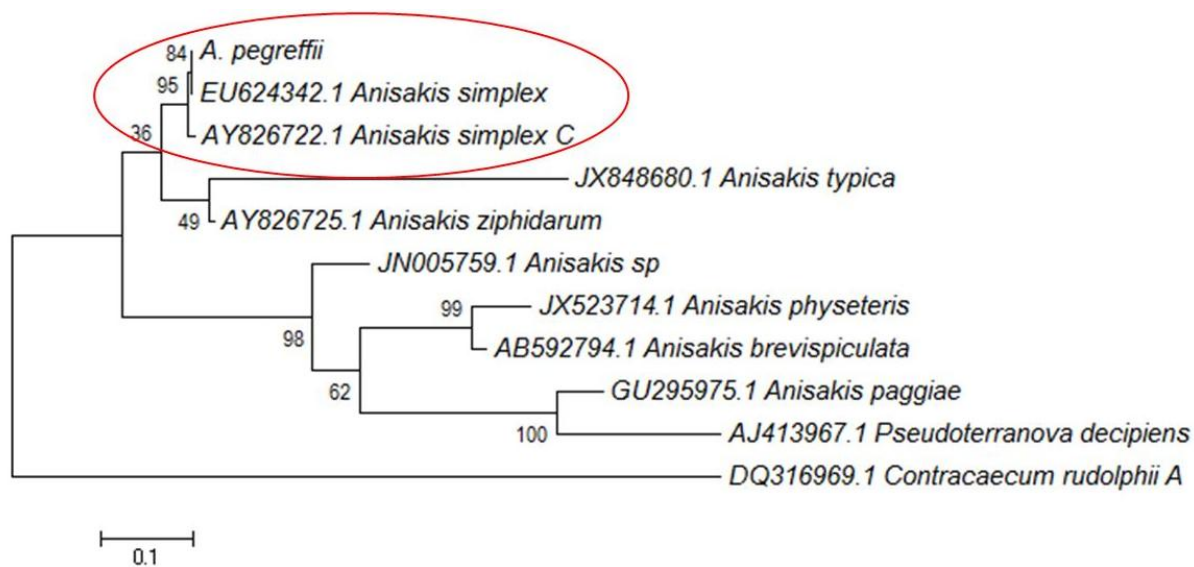
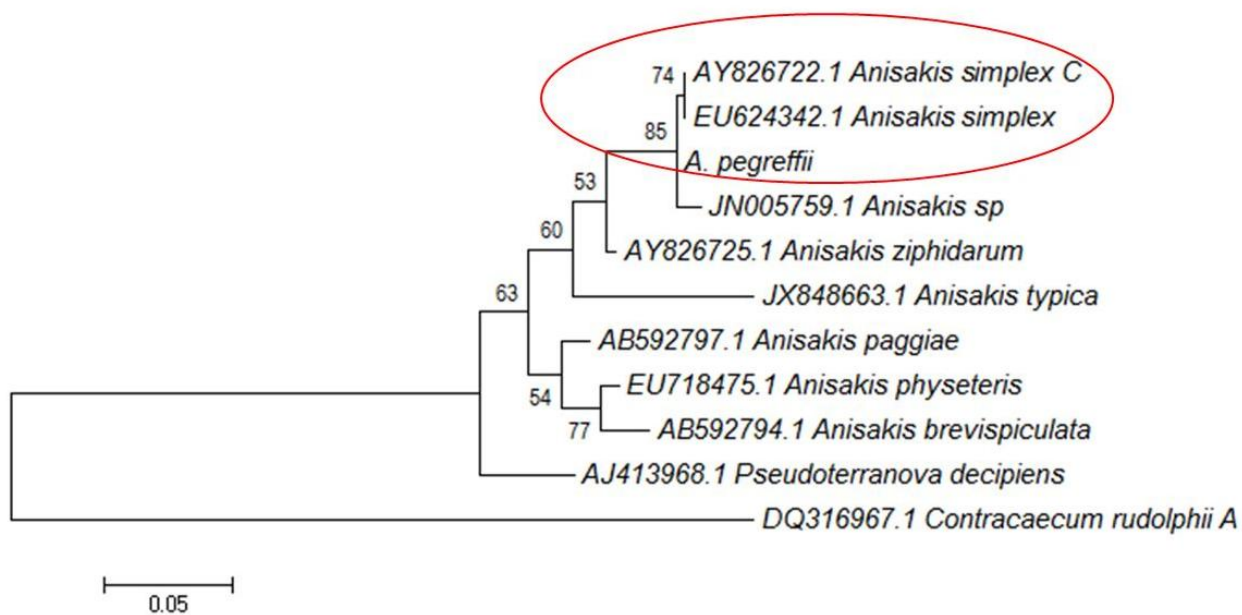
ITS-2 A.p     121  ggtgattctatcatggacaatatgacgagcgggttccttgccttagtgatgacaaaagaaga
JQ900763     121  ggtgattctatcatggacaatatgacgagcgggttccttgccttagtgatgacaaaagaaga
AB277823     121  ggtgattctatcatggacaatatgacgagcgggttccttgccttagtgatgacaaaagaaga

ITS-2 A.p     181  cgtaaacaccgaatctactataactactaataactagtagtataataggtgaggtgcttttgggtg
JQ900763     181  cgtaaacaccgaatctactataactactaataactagtagtataataggtgaggtgcttttgggtg
AB277823     181  cgtaaacaccgaatctactataactactaataactagtagtataataggtgaggtgcttttgggtg

ITS-2 A.p     241  tcacaaaagtgacaagtagccatttcataggggcaacaaccagcatacgtgataagttg
JQ900763     241  tcacaaaagtgacaagtagccatttcataggggcaacaaccagcatacgtgataagttg
AB277823     241  tcacaaaagtgacaagtagccatttcataggggcaacaaccagcatacgtgataagttg

ITS-2 A.p     301  gctggttgatgaaacggcaacgggaatgacggacgtctatgtgatcaaaaatgatactatt
JQ900763     301  gctggttgatgaaacggcaacgggaatgacggacgtctatgtgatcaaaaatgatactatt
AB277823     301  gctggttgatgaaacggcaacgggaatgacggacgtctatgtgatcaaaaatgatactatt

ITS-2 A.p     361  tgacctcagctcagtcgtgattaccogctgaattagaatc--
JQ900763     361  tgacctcagctcagtcgtgattaccogctgaattagaatc--
AB277823     361  tgacctcagctcagtcgtgattaccogctgaattagaatc--
```

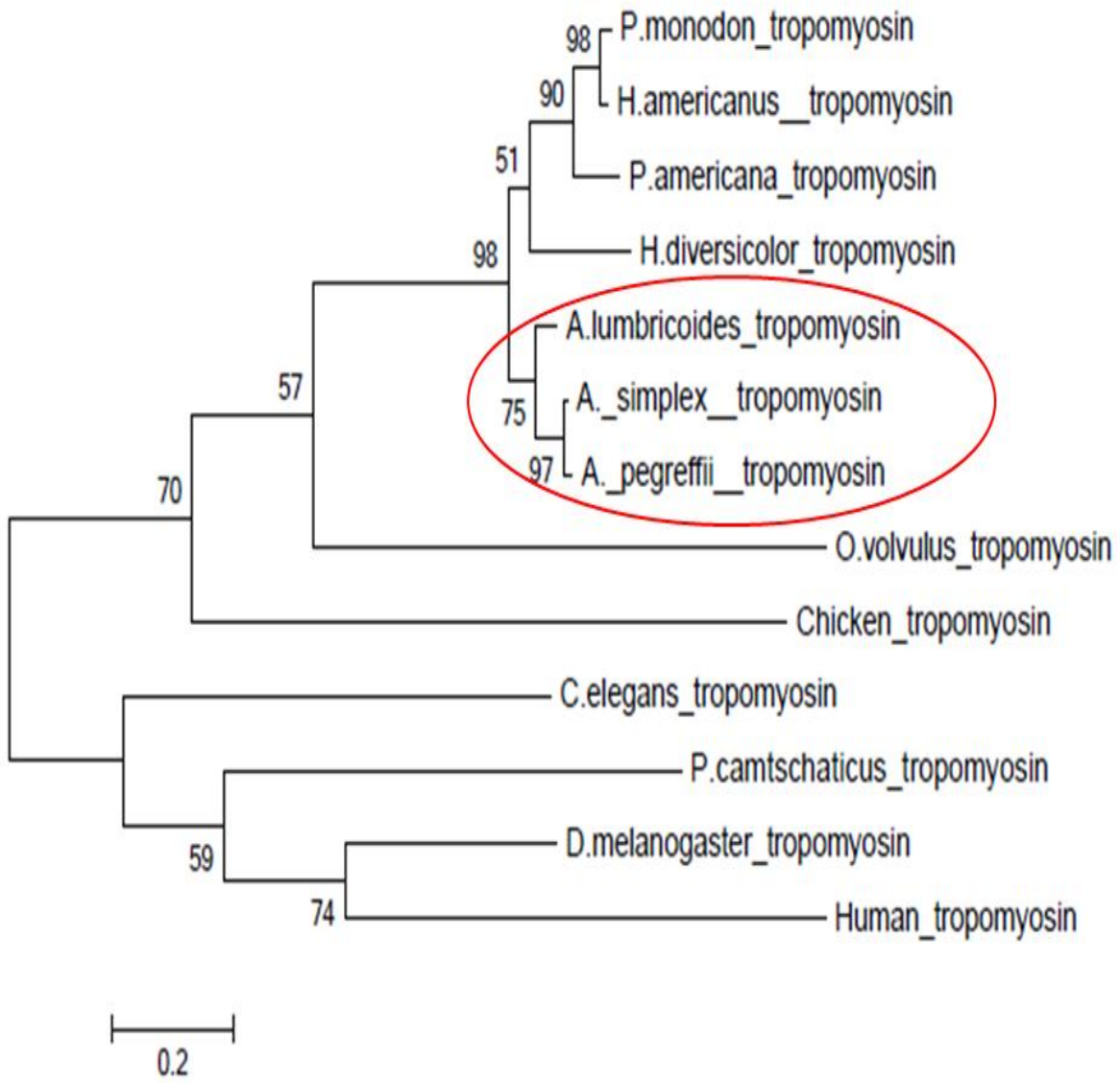


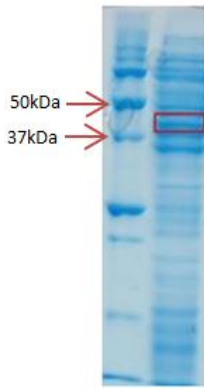
(a) Nucleic acid sequence

ATGGACGCAATCAAGAAGAAGATGCGCAAGGCAATGGAAATCGAGAAGGACAATGCC
CTCGATCGAGCCGATGCCGCCGAAGAGAAAGTCCGACAGATGACCGACAAGTTGGAG
AGAATCGAAGAGGAACTCCGAGACACACAAAAGAAGATGATGCAAAGTGAAGATGAT
TTGGACAAAGCTCAAGAAGACCTTTCAACGGCCAACCTCGAATCTGGAAGAGAAGGAA
AAGAAAGTGCAAGAAGCTGAGGCAGAAGTAGCTGCTTTGAATCGTCGTATGACACTGC
TCGAAGAGGAACTCGAAAGGGCTGAAGAACGTCTGAAATTGGCAACTGACAAACTTG
AAGAGGCGACACATACAGCTGATGAATCTGAGCGTGTGCGCAAGGTGATGGAGAACC
GCTCATTCCAAGATGAAGAGCGTGCGAATACGGTAGAATCACAACCTCAAGGAAGCGC
AAATGCTTGCCGAAGAGGCTGATCGCAAATACGATGAGGTTGCCCGTAAATTGGCCAT
GGTTGAAGCGGATTTAGAAAGAGCTGAAGAGCGTGCAAGAGGCGGAGAAAATAAGAT
CGTTGAATTGGAAGAGGAATTGCGAGTCGATGGTAACAACCTTGAATCGTTGGAGGTT
TCTGAAGAGAAGGCTTTGCAACGAGAGGATTCATACGAAGAACAGATCCGTACCGTTT
CTGCACGTCTCAAGGAGGCCGAACTCGTGCCGAATTTGCAGAAAGATCCGTTTCAGAA
ACTGCAGAAGGAAGTTGACAGACTCGAAGACGAACTCGTCCACGAGAAAGAGCGATA
CAAGAGCATTCTGAGGAACTCGATCTACTCCAAGAGCTGTCTGGATATTAATA

(b) Protein sequence

MDAIKKKMRKAMEIEKDNALDRADAEEKVRQMTDKLERIEEE
LRDTQKKMMQTENDLDKAQEDLSTANSNLEEKEKKVQEAEAEV
AALNRRMTLLEEELERAERLKLATDKLEEATHADESERVRKV
MENRSFQDEERANTVESQLKEAQMLAEEADRKYDEVARKLAMV
EADLERAEERA EAGENKIVELEEEELRVDGNNLKSLEVSEEKALQ
REDSYEEQIRTVSARLKEAETRAEFAERSVQKLOKEVDRLEDEL
VHEKERYKSISELDLLQELSGY Stop

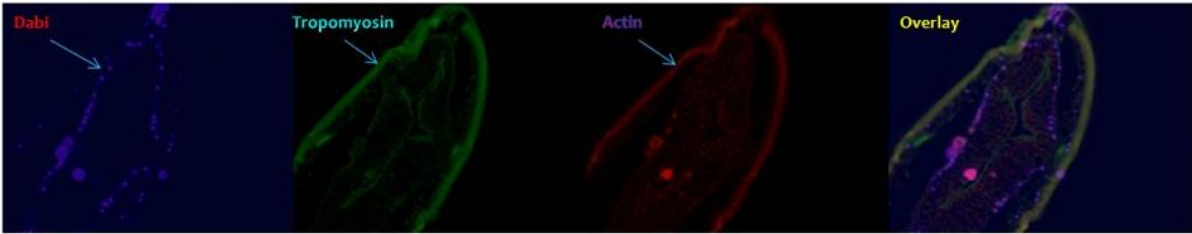




>*A. pegreffii* Tropomyosin protein sequence

MDAIKKKMRKAMEIEKDNALDRADAAEEKVRQMTDKLERIEEELRDTQK
KMMQTENDLDKAQEDLSTANSNLEEKEKKVQEAEEVAALNRRMTLEE
ELERAEERLKLATDKLEEAHTADESERVRKVMENRSFQDEERANTVESQL
KEAQMLAEEADRKYDEVARKLAMVEADLERAEERAEAGENKIVELEEELRV
DGNNLKSLEVSEEKALQREDSYEEQIRTVSARLKEAETRAEFAERSVQKLQKE
VDRLEDELVHEKERYKSISELDLLOELSGY

Treated samples



Control

