



Minerva Access is the Institutional Repository of The University of Melbourne

Author/s:

Villemagne, VL;Okamura, N;Rowe, CC

Title:

Untangling tau imaging

Date:

2016-01-01

Citation:

Villemagne, V. L., Okamura, N. & Rowe, C. C. (2016). Untangling tau imaging. *Alzheimer S and Dementia Diagnosis Assessment and Disease Monitoring*, 4 (1), pp.39-42. <https://doi.org/10.1016/j.dadm.2016.05.001>.

Persistent Link:

<https://hdl.handle.net/11343/256397>

License:

[CC BY-NC-ND](#)

## Neuroimaging Untangling tau imaging

Victor L. Villemagne<sup>a,b,c,\*</sup>, Nobuyuki Okamura<sup>d</sup>, Christopher C. Rowe<sup>a,c</sup>

<sup>a</sup>Department of Molecular Imaging & Therapy, Centre for PET, Austin Health, Melbourne, Australia

<sup>b</sup>The Florey Institute of Neuroscience and Mental Health, The University of Melbourne, Melbourne, Australia

<sup>c</sup>Department of Medicine, The University of Melbourne, Melbourne, Australia

<sup>d</sup>Department of Pharmacology, Tohoku University, Sendai, Japan

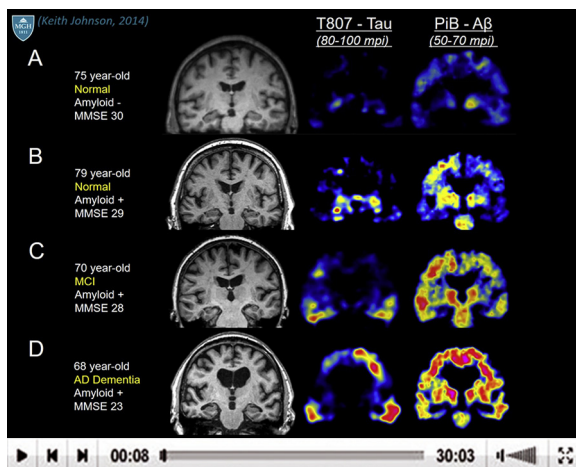
### Abstract

In vivo imaging of tau deposits is providing a better understanding of the temporal and spatial tau deposition in the brain, allowing a more comprehensive insight into the causes, diagnoses, and potentially treatment of tauopathies such as Alzheimer's disease, progressive supranuclear palsy, corticobasal syndrome, chronic traumatic encephalopathy, and some variants of frontotemporal lobar degeneration. The assessment of tau deposition in the brain over time will allow a deeper understanding of the relationship between tau and other variables such as cognition, genotype, and neurodegeneration, as well as assessing the role tau plays in ageing. Preliminary human studies suggest that tau imaging could also be used as a diagnostic, prognostic, and theranostic biomarker, as well as a surrogate marker for target engagement, patient recruitment, and efficacy monitoring for disease-specific therapeutic trials.

© 2016 The Authors. Published by Elsevier Inc. on behalf of the Alzheimer's Association. This is an open access article under the CC BY-NC-ND license (<http://creativecommons.org/licenses/by-nc-nd/4.0/>).

### Keywords:

PET; Tau imaging; Alzheimer's disease; Positron emission tomography; Tauopathies; Dementia



### Acknowledgments

We thank Professors Yukitsuda Kudo, Colin Masters, Kazuhiko Yanai, Shozo Furumoto, Drs Ryuichi Harada, Michelle Fodero-Tavoletti, William P. Blatty, Mrs Svetlana Pejoska-Bozinovski, Ms Fiona Lamb, and the Brain Research Institute for their assistance with this study. This review was supported in part by NHMRC Project Grant 1044361. VLV is supported by NHMRC Research Fellowship 1046471. The funding sources had no input into the design of this study, the analysis of data, or writing of the manuscript.

V.L.V. has received speaker honoraria from GE Healthcare, Piramal Imaging, and Avid Radiopharmaceuticals and consulting honoraria from Novartis and Lundbeck. N.O. has received research support from Clino Co. Ltd. THK compounds have been licensed to GE Healthcare. C.C.R. has received speaker honoraria from received speaker and consulting honoraria

from GE Healthcare, Piramal Imaging, Avid Radiopharmaceuticals, Navidea, and AstraZeneca.

\*Corresponding author. Tel.: +61-394963321; Fax: +61-3-9496 5663.  
E-mail address: [victorlv@unimelb.edu.au](mailto:victorlv@unimelb.edu.au)

<http://dx.doi.org/10.1016/j.dadm.2016.05.001>

2352-8729/© 2016 The Authors. Published by Elsevier Inc. on behalf of the Alzheimer's Association. This is an open access article under the CC BY-NC-ND license (<http://creativecommons.org/licenses/by-nc-nd/4.0/>).





- [80] Okamura N, Furumoto S, Fodero-Tavoletti MT, Mulligan RS, Harada R, Yates P, et al. Non-invasive assessment of Alzheimer's disease neurofibrillary pathology using 18F-THK5105 PET. *Brain* 2014; 137:1762–71.
- [81] Villemagne VL, Burnham S, Bourgeat P, Brown B, Ellis KA, Salvado O, et al. Amyloid beta deposition, neurodegeneration, and cognitive decline in sporadic Alzheimer's disease: a prospective cohort study. *Lancet Neurol* 2013;12:357–67.
- [82] Roberson ED, Scearce-Levie K, Palop JJ, Yan F, Cheng IH, Wu T, et al. Reducing endogenous tau ameliorates amyloid beta-induced deficits in an Alzheimer's disease mouse model. *Science* 2007;316:750–4.
- [83] Giacobini E, Becker RE. One hundred years after the discovery of Alzheimer's disease. A turning point for therapy? *J Alzheimers Dis* 2007; 12:37–52.
- [84] Zhang B, Maiti A, Shively S, Lakhani F, McDonald-Jones G, Bruce J, et al. Microtubule-binding drugs offset tau sequestration by stabilizing microtubules and reversing fast axonal transport deficits in a tauopathy model. *Proc Natl Acad Sci U S A* 2005;102:227–31.
- [85] Wischik C, Staff R. Challenges in the conduct of disease-modifying trials in AD: practical experience from a phase 2 trial of Tau-aggregation inhibitor therapy. *J Nutr Health Aging* 2009; 13:367–9.
- [86] Duyckaerts C, Braak H, Brion JP, Buee L, Del Tredici K, Goedert M, et al. PART is part of Alzheimer disease. *Acta Neuropathol* 2015; 129:749–56.
- [87] Jellinger KA, Alafuzoff I, Attems J, Beach TG, Cairns NJ, Crary JF, et al. PART, a distinct tauopathy, different from classical sporadic Alzheimer disease. *Acta Neuropathol* 2015;129:757–62.