



Minerva Access is the Institutional Repository of The University of Melbourne

Author/s:

de Guingand, DL;Palmer, KR;Snow, RJ;Davies-Tuck, ML;Ellery, SJ

Title:

Risk of adverse outcomes in females taking oral creatine monohydrate: A systematic review and meta-analysis

Date:

2020-01-01

Citation:

de Guingand, D. L., Palmer, K. R., Snow, R. J., Davies-Tuck, M. L. & Ellery, S. J. (2020). Risk of adverse outcomes in females taking oral creatine monohydrate: A systematic review and meta-analysis. *Nutrients*, 12 (6), pp.1-26. <https://doi.org/10.3390/nu12061780>.

Persistent Link:



<https://hdl.handle.net/11343/251499>

License:

CC BY

Review

Risk of Adverse Outcomes in Females Taking Oral Creatine Monohydrate: A Systematic Review and Meta-Analysis

Deborah L. de Guingand ^{1,*} , Kirsten R. Palmer ^{2,3}, Rodney J. Snow ⁴, Miranda L. Davies-Tuck ¹ and Stacey J. Ellery ^{1,2} 

¹ The Ritchie Centre, Hudson Institute of Medical Research, Melbourne 3168, Australia; miranda.tuck@hudson.org.au (M.L.D.-T.); stacey.ellery@hudson.org.au (S.J.E.)

² Department of Obstetrics and Gynaecology, Monash University, Melbourne 3168, Australia; kirsten.palmer@monash.edu

³ Monash Health, Monash Medical Centre, Melbourne 3168, Australia

⁴ Institute of Physical Activity and Nutrition, Deakin University, Melbourne 3125, Australia; rod.snow@deakin.edu.au

* Correspondence: Deborah.deguingand@hudson.org.au; Tel.: +61-3-8572-2870

Received: 20 April 2020; Accepted: 11 June 2020; Published: 15 June 2020



Abstract: Creatine Monohydrate (CrM) is a dietary supplement routinely used as an ergogenic aid for sport and training, and as a potential therapeutic aid to augment different disease processes. Despite its increased use in recent years, studies reporting potential adverse outcomes of CrM have been mostly derived from male or mixed sex populations. A systematic search was conducted, which included female participants on CrM, where adverse outcomes were reported, with meta-analysis performed where appropriate. Six hundred and fifty-six studies were identified where creatine supplementation was the primary intervention; fifty-eight were female only studies (9%). Twenty-nine studies monitored for adverse outcomes, with 951 participants. There were no deaths or serious adverse outcomes reported. There were no significant differences in total adverse events, (risk ratio (RR) 1.24 (95% CI 0.51, 2.98)), gastrointestinal events, (RR 1.09 (95% CI 0.53, 2.24)), or weight gain, (mean difference (MD) 1.24 kg pre-intervention, (95% CI −0.34, 2.82)) to 1.37 kg post-intervention (95% CI −0.50, 3.23)), in CrM supplemented females, when stratified by dosing regimen and subject to meta-analysis. No statistically significant difference was reported in measures of renal or hepatic function. In conclusion, mortality and serious adverse events are not associated with CrM supplementation in females. Nor does the use of creatine supplementation increase the risk of total adverse outcomes, weight gain or renal and hepatic complications in females. However, all future studies of creatine supplementation in females should consider surveillance and comprehensive reporting of adverse outcomes to better inform participants and health professionals involved in future trials.

Keywords: creatine monohydrate; supplementation; adverse outcomes; safety; human; female

1. Introduction

The creatine kinase circuit is integral to cellular bioenergetics and maintenance of ATP production, especially in skeletal muscle [1,2]. This circuit is also essential for normal neurodevelopment and cognitive function [3–5]. Creatine monohydrate (CrM) has been used as a dietary supplement to enhance sporting performance, and as a potential therapeutic aid to modify neurodegenerative disease or musculo-skeletal disorders, such as Huntington's disease [6], amyotrophic lateral sclerosis [7,8], and certain muscular dystrophies [9]. These studies have shown mixed results; from some

clinical benefits in muscular dystrophies, to no apparent clinical improvement in neurodegenerative diseases [10,11]. Creatine supplementation became popularised as an ergogenic aid after it was first reported to increase the total creatine content in the skeletal muscle of men [12]. The first therapeutic human trial with CrM was undertaken to determine if it could mitigate the deterioration in gyrate atrophy [13]. After several decades of efficacy studies, in 2017, The International Society of Sports Nutrition (ISSN) concluded that creatine is likely to be more beneficial than harmful to many populations [14].

While there have been more than eighty reviews reporting the ergogenic or therapeutic effect of creatine supplementation, only thirty-four reviews have addressed the safety of this supplement. Some of these reviews have been highly specific, targeting particular areas of interest [15–18], but none have been sex specific. There have only been two systematic reviews to date, one which focused on renal function [19] and the other on fluid dynamics [20] both were conducted in mixed sex populations. The first general safety reviews were conducted in 1998–2000 [21–24] and more recently in 2011–2012 [25–27]. The heterogeneity of reviews can make it difficult to assess the safety of creatine supplementation relative to population characteristics, such as sex. Study design, methodology and dosing regimens may also potentially modify adverse outcome reporting.

To the best of our knowledge there has not been a systematic review on the safety of creatine supplementation in a female only population. Indeed, a paucity of current safety data exists in females. This is despite estimates that up to 65% of female athletes use ergogenic aids (including CrM, caffeine and beta-alanine) [28] and despite females being over-represented in some disease processes, such as auto-immune disorders [29–31], and major depressive disorders (MDD) [32–36] in which creatine has been trialled as a therapeutic intervention. Pre-clinical animal studies show a potential benefit in supplementing a pregnancy with creatine to improve neonatal outcomes [37–41] and studies have now been conducted to characterise creatine metabolism in human pregnancy [42]. Combined, these ergogenic practices and disease processes, which can occur during a female's reproductive years, make understanding the safety of creatine supplementation in this population important and relevant [43]. The primary purpose of this systematic review is to report the number of adverse outcomes (both events and effects) in females taking oral creatine supplementation. This systematic review aims to consolidate current evidence, from both ergogenic studies and therapeutic trials, to accurately inform on the safety of creatine supplementation in females.

2. Methods

This review has been registered with PROSPERO (access ID CRD42018105999) and undertaken in keeping with Preferred Reporting Items for Systematic Reviews and Meta-Analyses (PRISMA) guidelines [44].

2.1. Study Selection

We reviewed any trial or case reports where CrM was used in a female population for any purpose, and which included explicit reporting or monitoring of adverse outcomes, including changes in body weight. Studies included randomised controlled trials, open-label trials, dose-escalating trials, crossover studies, repeated measures trials with parallel arms, case studies, and pharmacokinetic and pharmacodynamic studies. We included studies of females from the age of menarche onwards, who were given oral CrM, including trials where concomitant medication was used, when reported evenly across groups. Studies were excluded if undertaken in paediatric or mixed sex populations, and populations with known creatine deficiency syndromes or mitochondrial disorders. All included studies had institutional human ethics approval.

2.2. Search Strategy

We searched the following databases from inception to October 2019, with auto search alerts continuing up to submission date. This included all languages and grey literature [45].

Databases searched included Medline (Ovid), Embase (Elsevier), Web of Science (Clarivate Analytics), Scopus (Elsevier), SPORTDiscus, ScienceDirect, CINAHL and the Cochrane Database of clinical trials and systematic reviews. All databases were searched broadly, using the keywords, 'creatine', 'creatine phosphate', 'total creatine', 'phosphocreatine' and 'phosphorylcreatine', and then combined with a search of all 'creatine supplementation', 'creatine monohydrate', 'oral creatine', and its known derivations (File S1 A). Medline and Embase search engines were able to be further refined, with a narrower search of a priori known adverse events (e.g., creatine AND nausea), and exclusion of animal and creatine deficiency studies (File S1 B). Both strategies were applied and compared, to validate the search strategies and enhance the sensitivity and precision of the search [46–48]. Only the broadest search strategy was able to be applied in all other databases (All creatine AND All creatine supplementation) in order to capture all adverse outcomes. A manual search of references in previous safety reviews was also undertaken. Attempts were made to contact trial authors where contact details were provided, to clarify information such as the population mix, specific intervention(s) used, or to request original laboratory data. In cases of no reply, where the message was undeliverable, or the author contact details could not be located, no subsequent attempt was made.

2.3. Data Extraction

The lead author conducted searches, screened titles and abstracts, obtained full manuscripts and was responsible for extracting and collating the relevant raw data into a spreadsheet. No a priori assumptions were made about which adverse outcomes to collect and report. Where studies reported a wide range of potential adverse events and effects, these were discussed by three authors and where consensus was reached, symptoms were attributed to the appropriate organ system. We subsequently excluded studies that reported specifically on changes to other metabolic pathways in response to creatine supplementation, as differentiating these outcomes into positive or negative effects was beyond the scope of this review [49–55]. Where included ergogenic studies reported changes in lactate, heart rate, blood pH, VO₂ Max or insulin resistance, we could not clearly define these as adverse outcomes to creatine supplementation, rather, we determined them more likely associated with a physiological response to concurrent exercise regimens.

The primary outcome of this review was to report deaths, serious adverse events (any outcome that causes life-threatening events; requirement for hospitalisation or prolongation of existing hospitalisation; persistent or significant disability; or any events that are considered medically important), adverse events (any adverse outcome reported by the participant as a symptom that occurred while a person was taking an intervention at any dose, but the event was not, or has not been assessed as necessarily attributable to the intervention taken), adverse effects (any unwanted outcomes of which the person was not aware; usually detected by laboratory tests or by clinical investigations) in any organ systems, and weight gain with CrM supplementation. Body composition changes were measured in a variety of ways within studies; however, we determined overall weight gain as the only body composition change that could be viewed as a potential adverse effect in females, especially those not taking creatine for sporting improvement. Secondary outcomes were to describe factors that may modify adverse outcome reporting such as study design, methodology, reporting bias and dosing regimens.

2.4. Data Analysis and Statistical Methods

Characteristics of the included studies were tabulated. Studies were subsequently categorised as ergogenic, (assessing outcomes related to muscle strength, muscle power, and functional performance), or therapeutic, (assessing outcomes related to improvement in cognitive function or modification of disease processes). We defined pre-menopausal females as women over the age of menarche, determined as 13 years of age or above, and less than 50 years of age [56]. Where it was clear how adverse outcomes were collected and measured we categorised these as participant-initiated reporting, researcher-initiated reporting, or unknown. Studies were characterised by dosing regimens, where participants received either a maintenance dose or a loading dose only, or they received a

combined dose; which included a loading dose followed by a maintenance dose. Studies reported adverse outcomes in one of three ways. Where an adverse outcome was reported as a single episode per participant across groups, these were reported as a dichotomous variable (YES/NO) and subject to meta-analysis using the Cochrane RevMan 5.3 software (Copenhagen, Denmark) and stratified by dosing regimen. Single participant outcomes that could be pooled were presented in the meta-analysis as a risk ratio (RR) applying a random effects model with accompanying 95% confidence intervals (CI's) using the Cochrane RevMan 5.3 software and stratified by dosing regimen [57]. Studies that reported differently, by either counting multiple symptoms per participant across groups, or by describing zero events across groups, are shown in the meta-analysis, but do not contribute data to the overall effect estimate. The gastrointestinal (GIT) tract was the only system where sufficient numbers of adverse events were clearly attributable to this system and could be subject to meta-analysis. Heterogeneity was measured with the I^2 statistic. We undertook sensitivity analysis by exposing the data to different methods (fixed vs. random effect) and removing and testing changes in the number of events within studies (where events were minimal, or zero, in one group).

Adverse effects (signs), reported as biochemical laboratory values or measurements, were grouped according to the organ system assessed. Included studies only reported on biomarkers of the renal and/or hepatic system. Reporting of laboratory data was too heterogeneous to undertake meta-analysis so where values were presented, these were tabulated as group means, pre- and post-intervention, and the change reported as percentage (%) post-intervention. Where laboratory values were not provided in the manuscript, but authors identified that these systems were monitored, their findings are presented in Table 1. We were unable to ascertain change across all reported body composition parameters (too much heterogeneity) therefore we have presented overall pre- and post-intervention mean group weights, stratified by dosing regimens. These are expressed as a mean difference (MD) in kilograms, applying a random effects model, with accompanying 95% CI's, and I^2 statistic. Where studies could not be included in the meta-analysis, we describe their individual findings. Finally, we describe attrition rates and reasons for attrition. Losses are presented as a percentage of the total cohort, and reasons for attrition are reported where provided.

Table 1. Characteristics of studies included in Systematic Review.

Study Characteristics					Adverse Outcomes			
Author (Year)	Study Design (Study Type)	Number Treated (Cr:Pl)	Population Type (Mean Age ± SD) (Cr:Pl)	Dosing Regimen M, C or L (Total Days Duration)	General Symptoms (R, S, T.)	Renal System	Hepatic System	Body Comp
AGUIAR (2013)	DBRPCT (E)	18 (9:9)	Post-menopausal (64 ± 4:65 ± 6)	M 5 g/day (84)	No AE's reported (R)	-	-	No effect
ALVES (2013)	DBRPCT (T)	32 (16:16)	Pre-menopausal (48.7 ± 10.1:49 ± 8.4)	C 20 g/day (5) then 5 g/day (107)	No AE's reported (S)	No difference between pre-and post-intervention	-	-
ATAKAN (2018)	DBRPCT (E)	30 (15:15)	Pre-menopausal (19.8 ± 1.1, all)	L 0.25 g/kg/day (7)	-	-	-	No effect
AYOAMA (2003)	DBRPCPT (E)	26 (13:13)	Pre-menopausal (19.4 ± 0.8:19.3 ± 0.7)	C 20 g/day (7) then 3 g/day (14)	-	No difference between pre-and post-intervention	No difference between pre-and post-intervention	No effect
BENTON (2011)	DBRPCT (T)	121 (61:60)	Pre-menopausal (20.3 ± 2.1, all)	L 20 g/day (5)	AE's reported across study (R)	-	-	-
BRENNER (2000)	DBRPCT (E)	20 (10:10)	Pre-menopausal (18.1 ± 7.6:19.5 ± 8.5)	C 20 g/day, (7) then 2 g/day (28)	One AE reported (R)	No difference between pre-and post-intervention	No difference between pre-and post-intervention	No effect
CANETE (2006)	SBRPCT (E)	16 (10:6)	Post-menopausal (67 ± 6:68 ± 4)	L 0.3 g/kg/day (7)	No AE's reported (S)	No difference between pre-and post-intervention	No difference between pre-and post-intervention	No effect
CHILIBECK (2015)	DBRPCPT (T)	47 (23:24)	Post-menopausal (57 ± 4:57 ± 7)	M 0.1 g/kg/day (365)	AE's reported across study (R)	No difference between pre-and post-intervention	No difference between pre-and post-intervention	No effect
COX (2002)	DBPCMT (E)	12 (6:6)	Pre-menopausal (22.1 ± 5.4, all)	L 20 g/day (6)	AE's reported across study (S)	-	-	Effect
ECKERSON (2006)	DBRPCMXT (E)	10 (All)	Pre-menopausal (22 ± 5, all)	L 20 g/day (5)	-	-	-	No effect
FERGUSON (2006)	DBRPCMT (E)	26 (13:13)	Pre-menopausal (24.6 ± 3.4, all)	C 0.3 g/kg/day (7) then 0.03 g/kg/day (63)	No AE's reported (S)	-	-	No effect
FORBES (2017)	DBRPCT (E)	18 (9:8)	Pre-menopausal (23.8 ± 4.7:22.4 ± 3)	L 0.3 g/kg/day (5) then 0.1 g/kg/day (28)	-	-	-	No effect
GOTSHALK (2008)	DBRPCMT (E)	30 (15:12)	Post-menopausal (63.3 ± 4.6:63 ± 3.8)	C 0.3 g/kg/day (7)	No AE's reported (S)	No difference between pre-and post-intervention	No difference between pre-and post-intervention	Effect
GUALANO (2014)	DBRPCPT (T)	74 (37:37)	Post-menopausal (66.1 ± 4.8:66.3 ± 6)	L 20 g/day (5) then 5 g/day (161)	No AE's reported (S)	No difference between pre-and post-intervention	No difference between pre-and post-intervention	Effect
HAMILTON (2000)	SBRCMT (E)	28 (11:13)	Pre-menopausal (22.5 ± 4.23:23.9 ± 4.76)	L 30 g/day (9)	AE's reported across study (S)	-	-	No effect

Table 1. Cont.

Study Characteristics				Adverse Outcomes			
HELLEM (2015)	PSOL (T)	14 (All)	Pre-menopausal (37.4 ± 9.9)	M 5 g/day (56)	AE's reported across study (R)	Increase in serum creatinine reported	-
KAMBIS (2003)	DBRPCMT (E)	22 (11:11)	Pre-menopausal (63.2 ± 6.68:63 ± 6.08)	L 20 g/day (5)	No AE's reported (S)	-	No effect
KONDO (2011)	PSOL (T)	5 (All)	Pre-menopausal (14–18)	M 4 g/day (56)	AE's reported across study (R)	No abnormal levels reported	-
KONDO * (2016)	DBRPCDRT (T)	33 (25:8)	Pre-menopausal (13–20)	M 2, 4 or 10 g/day (56)	AE's reported across study (R)	No difference between pre-and post-intervention	No effect
LARSON-MEYER (2000)	DBRPCT (E)	14 (7:7)	Pre-menopausal (19 ± 1.5:19.3 ± 1.4)	C 15 g/day (5) then 5 g/day (86)	AE's reported across study (R)	-	No effect
LEADER (2009)	OLT (T)	30 (All)	Pre-menopausal (over 18)	M 3 g/day (7) then 5 g/day (49)	No AE's reported (S)	-	-
LEDFORD (1999)	DBRPCMXT (E)	10 (All)	Pre-menopausal (26 ± 4:28 ± 7)	L 20 g/day (5)	One AE reported (U)	-	No effect
LOBO (2015)	DBRPCPT (T)	149 (74:75)	Post-menopausal (58 ± 5:58 ± 6)	M 1 g/day (365)	AE's reported across study (S)	No difference between pre-and post-intervention	No difference between pre-and post-intervention No difference between pre-and post-intervention
LYOO (2012)	DBRPCT (T)	52 (25:27)	Pre-menopausal (45.7 ± 12.7:47.5 ± 9.5)	M 3 g/day (7) then 5 g/day for (49)	AE's reported across study (R)	No abnormal levels reported	3 showed mild increase in liver enzymes (2Cr,1Pl)
NEVES (2011)	DBRPCT (T)	26 (13:13)	Post-menopausal (59 ± 3:57 ± 3)	C 20 g/day (7) then 5 g/day (77)	No AE's reported (R)	No difference between pre-and post-intervention	-
RAMIREZ-CAMPILLO ^{ae} (2016)	DBRPCT (E)	33 (10:10:10)	Pre-menopausal (23.1 ± 3.4:22.9 ± 1.7:22.5 ± 2.1)	C 20 g/day (7) then 5 g/day (35)	AE's reported across study (S)	-	Effect
SILVA (1996)	DBRPCT (E)	16 (8:8)	Pre-menopausal (16.3 ± 1.8:15.7 ± 1.2)	L 20 g/day (21)	No AE's reported (S)	-	No effect
THOMPSON (1996)	RPCT (E)	10 (-)	Pre-menopausal (university students)	M 2 g/day (42)	-	-	No effect
VANDENBERGHE (1997)	DBPCT (E)	19 (10:9)	Pre-menopausal (19–22)	C 20 g/day (4) then 5 g/day (73)	No AE's reported (S)	No abnormal levels reported	Effect

Study Design: DBPCMT = Double blind placebo-controlled matched trial; DBPCT = Double blind placebo-controlled trial; DBRPCDRT = Double blind randomised placebo-controlled dose ranging trial; DBRPCMXT = Double blind randomised placebo-controlled matched crossover trial; DBRPCT = Double blind randomised placebo-controlled trial; DBRPCMT = Double blind randomised placebo-controlled matched trial; DBRPCPT = Double blind randomised placebo-controlled parallel trial; OLT = Open label trial; PSOL = Pilot study open label; RPCT = Randomised placebo-controlled trial; SBRPCMT = Single blind randomised placebo-controlled matched trial; SBRPCT = Single blind randomised placebo-controlled trial. Cr = Creatine group; Pl = Placebo group; E = Ergogenic; T = Therapeutic; M = maintenance dose only; C = Combination loading + maintenance dose, L = Loading dose only; AE = adverse event; Collection method, R = research initiated participant reporting; Collection method, S = participant self-reported; Collection method, U = unknown method of reporting; * 3 arms with different dosing regimens; ^{ae} 3 arms (CrM, Placebo, Control); all = Mean and Standard deviation (SD) presented as total combined age group data.

2.5. Risk of Bias

We assessed risk of bias across all studies using the Cochrane Handbook for Systematic Reviews of interventions, the GRADE handbook, and ROBINS-1 tool for open label trials [58–60]. The overall and individual risk of bias tables were constructed, with studies categorised as high, unclear, or low risk of bias, across seven predefined domains. Two authors assessed each study independently and a third author was consulted if agreement could not be reached.

3. Results

3.1. Search Characteristics

Figure 1 outlines the PRISMA flow diagram for retrieving, reviewing, screening and final inclusion of studies. In brief, we retrieved 6964 articles and reviewed 334 full text articles. Twenty-nine articles were included in the final analysis.

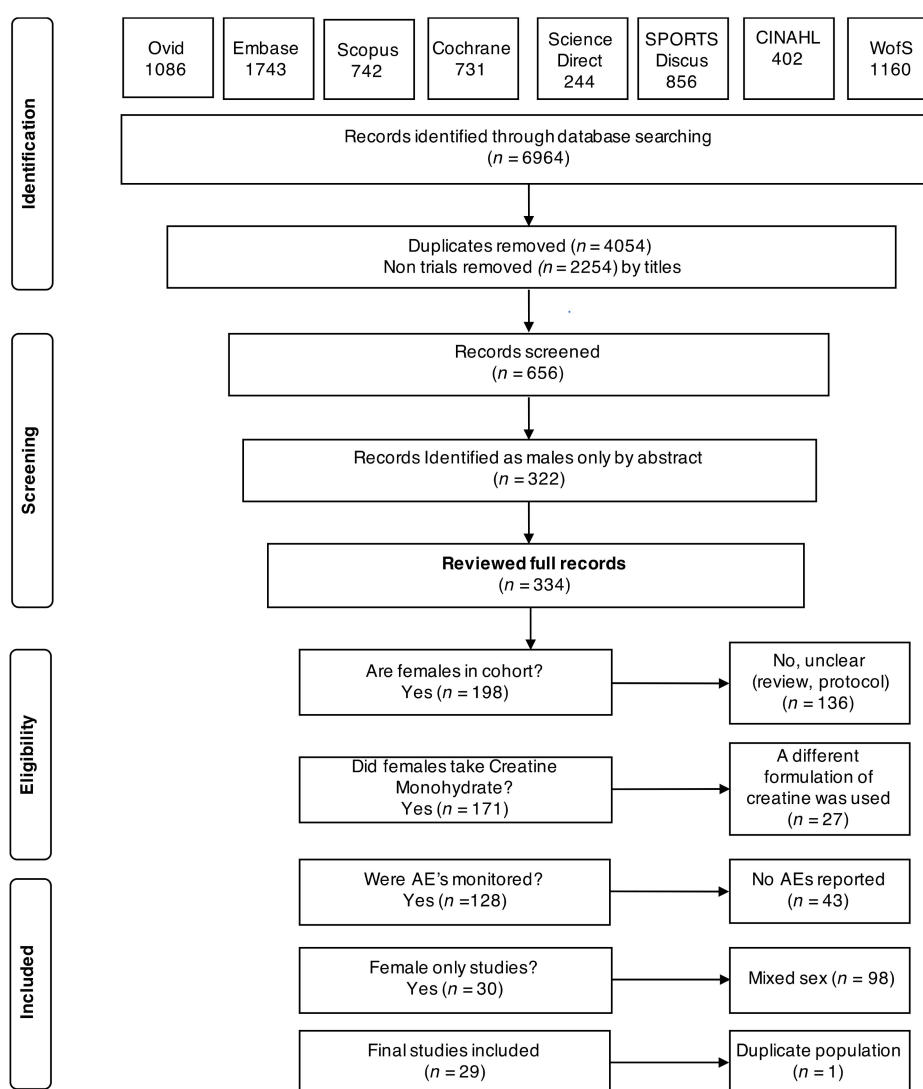


Figure 1. Organisation of article review process as a PRISMA 2009 flow diagram.

3.2. Study and Participant Characteristics

Characteristics of studies that met our inclusion criteria are outlined in Table 1. They included three open label trials [34,35,61], a placebo-controlled dose-escalating study [33], two randomised

placebo-controlled crossover design studies [62,63], and twenty-three randomised trials with a placebo arm [32,64–85]. The total number of consented participants was 951 with a sample size between 5 and 149 participants per study, with the median number of participants per study being 24. Eighteen studies were categorised as ergogenic and eleven as therapeutic trials. Studies used different methodology for collection of adverse outcome data. Therapeutic studies were more likely to undertake enhanced reporting of adverse events (via researcher interview, or tool-based surveys or questionnaires), include a data safety committee and be conducted in tertiary care facilities (73%). Ergogenic studies were more likely to use passive methods of data reporting such as participant self-reporting and were mostly conducted in sporting laboratories or facilities (69%). All studies had varied dosing regimens, ranging from 1–30 grams (g) per day, with duration of treatment ranging from 4 days to 365 days. The age range in years in the CrM groups were 16–67, and 16–68 in the placebo groups. Seven studies (24%) contained post-menopausal females and twenty-two studies (76%) included pre-menopausal females.

3.3. Risk of Bias

Most studies were well conducted with low risk of bias across the seven defined domains. Low risk ranged from 35–85% across the seven domains. (Figures 2 and 3). High risk of bias was generally low and ranged from 6–12.5% across the seven domains. The domains at lowest risk of bias included selective reporting (85%), incomplete outcome data reporting (75%), blinding of participants and personnel (70%), and risk of other bias (70%). Domains at highest risk of bias included selection bias (12.5%), and performance bias (12%). Poor or unclear reporting of allocation concealment (40%) was evenly shared across ergogenic studies and therapeutic trials. Studies were allocated an unclear risk of bias if the reviewers were unable to determine clearly how the domain bias was addressed. Unclear risk ranged between 6–50% across the seven domains.

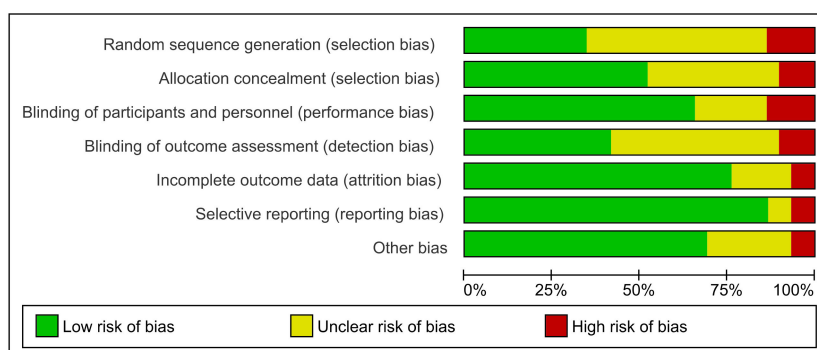


Figure 2. Overall risk of bias for included studies. Data are presented as percentages of risk assessment across 7 predefined domains.

	Random sequence generation (selection bias)	Allocation concealment (selection bias)	Blinding of participants and personnel (performance bias)	Blinding of outcome assessment (detection bias)	Incomplete outcome data (attrition bias)	Selective reporting (reporting bias)	Other bias
Aguilar 2013	?	+	+	+	+	+	+
Alves 2013a	+	+	+	+	+	+	+
Atakan 2018	+	+	+	?	+	+	+
Ayoama 2003	?	?	-	?	+	+	+
Benton 2011	?	?	+	?	?	+	+
Brenner 2000	?	?	?	?	?	+	?
Cañete 2006	?	?	?	+	+	+	+
Chilibeck 2015	+	+	+	+	-	-	?
Cox 2002	?	?	?	?	+	+	?
Eckerson 2004	+	+	+	?	+	+	+
Ferguson 2006	?	+	+	?	+	+	+
Forbes 2017	+	+	+	+	+	+	+
Gotshalk 2008	?	?	+	?	?	?	?
Gualano 2014	+	+	+	+	+	+	+
Hamilton 2000	?	?	+	?	?	+	+
Hellem 2015	-	-	-	-	+	+	+
Kambis 2003	?	+	+	?	+	+	+
Kondo 2011	-	-	-	-	+	+	-
Kondo 2016	?	?	?	?	+	?	?
Larson-Meyer 2000	?	?	+	+	?	+	+
Leader 2009	-	-	-	-	-	-	-
Ledford 1999	+	+	+	?	+	+	?
Lobo 2015	+	+	+	+	+	+	+
Lyoo 2012	+	+	+	+	+	+	+
Neves 2011a	+	+	+	+	+	+	+
Ramirez-Campillo 2016	?	+	+	+	+	+	+
Silva 2007	?	+	?	?	+	+	?
Thompson 1996	?	?	?	?	+	+	+
Vandenbergh 1997	-	?	+	+	+	+	+

Figure 3. Individual risk of bias for included studies. Data are presented as risk assessment across 7 predefined domains. + (green)=low risk of bias, ? (yellow)=unclear risk of bias, - (red)=high risk of bias.

3.4. Deaths

No deaths were reported in any included study.

3.5. Adverse Outcomes (Symptoms and Signs)

Reporting of adverse outcomes varied across the 29 included studies (Table 1 and File S2 A and B). Of the 29 included studies, twenty-four described adverse events, (sometimes referred to as ‘side effects’). One study reported on effects only (signs), describing renal and hepatic markers and body composition, and four studies reported solely on changes in body composition (File S2 C).

Of the twenty-four studies that reported on adverse events, eighteen were included in the meta-analysis. The six studies excluded from the meta-analysis were done so either due to the lack of a

comparator group, as was the case for three open label trials [34,35,61], or due to reporting in a manner that prevented appropriate analysis. This included a trial that reported on the percentage within groups that did not experience an adverse event (CrM 74%:Pl 85%), with all events reported as mild (feeling bloated or experiencing a headache) and resolving spontaneously [68], and two studies that reported on illness or injury in participants that resulted in them not completing the study requirements [63,69]. In Ledford et al., one participant was reported as falling ill after repeated exercise with both creatine and placebo supplementation regimens, resulting in an inability to complete outcome measures in this crossover design study [63]. Brenner et al., reported withdrawal of a participant in the CrM group due to compartment syndrome; reporting that symptoms preceded supplementation and were related to injury [69].

Of the 18 studies included in the meta-analysis, ten studies reported zero events (no side effects or adverse events) across either groups [64,65,70,73,75,76,78,81,83,85], and one study counted events differently [32]. Final meta-analysis, stratified by dosing regimens, confirmed no significant differences in adverse events across groups, (RR 1.24 (95% CI 0.51, 2.98); Figure 4). In the majority of cases authors did not speculate on the potential association or causality to CrM, or they determined that events were not attributable to the intervention. Only four therapeutic trials sought to determine potential causality to the intervention [33–35,71] and the events ascribed causality to the intervention were GIT disturbances (36%), muscle cramps (2%), and headache (14%).

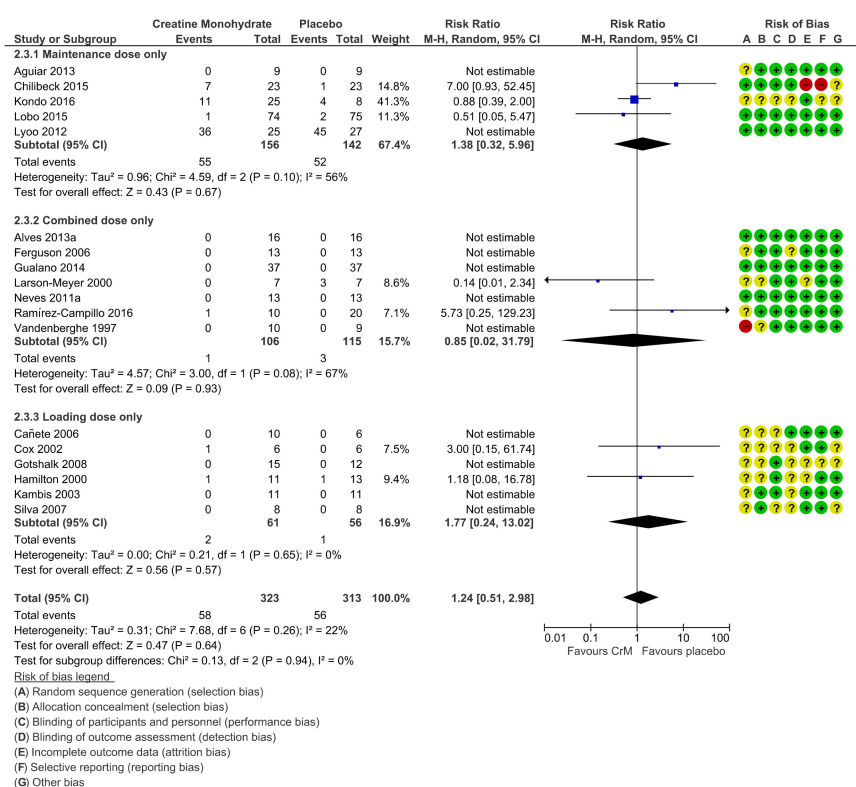


Figure 4. Incidence of adverse events per participant, stratified by dosing regimens. Within Forest Plot, Study or Subgroup = study stratified by dosing regimens; Events = number of adverse events reported; Total = total number of participants in study group; Weight = amount of information contributed by study; M-H = Mantel–Haenszel model; Random = random effects model. Risk of bias; + (green) = low risk of bias, ? (yellow) = unclear risk of bias, - (red) = high risk of bias.

3.6. GIT Events

The most reported adverse events occurred in the GIT system with eight placebo-controlled studies reporting GIT symptoms, (thirty-two in CrM group, and nineteen in the Placebo group).

Symptoms reported include nausea, vomiting, GIT discomfort, diarrhoea, constipation, irritable bowel, bloating, feeling of weight gain, dyspepsia, indigestion, decreased appetite. There was no statistically significant difference across groups for GIT events, when stratified for dosing regimens. (RR 1.09 (95% CI 0.53, 2.24); Figure 5).

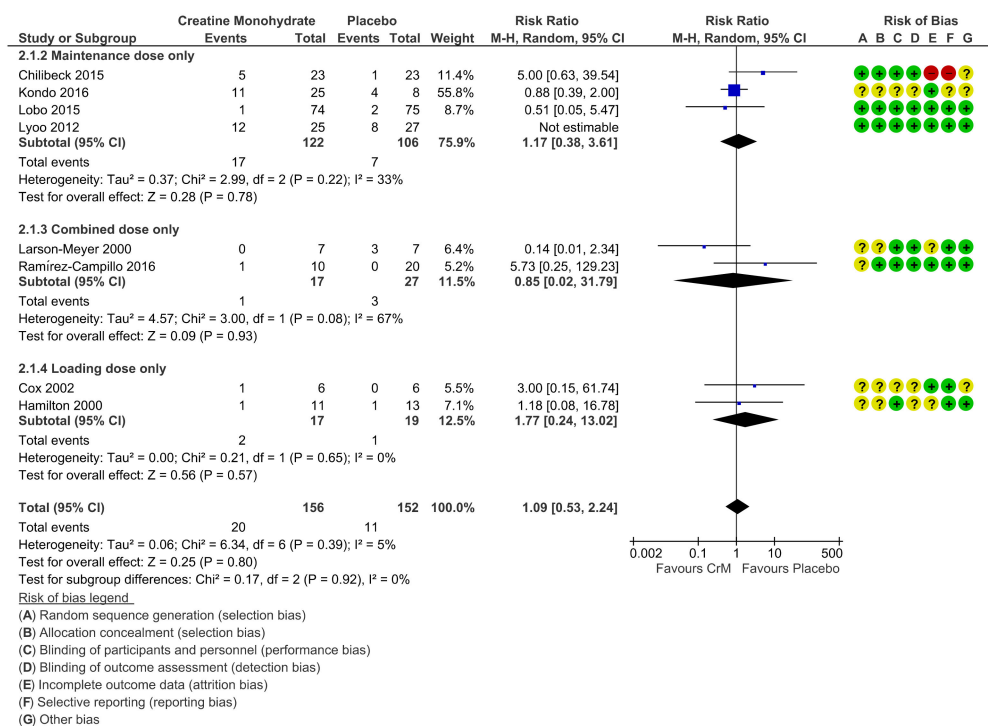


Figure 5. Incidence of gastrointestinal (GIT) events per participant, stratified by dosing regimens. Within Forest Plot, Study or Subgroup = study stratified by dosing regimens; Events = number of adverse events reported; Total = total number of participants in study group; Weight = amount of information contributed by study; M-H = Mantel-Haenszel model; Random = random effects model. Risk of bias; + (green) = low risk of bias, ? (yellow) = unclear risk of bias, - (red) = high risk of bias.

Four studies identified GIT symptoms as the reason for cessation of the intervention; however, similar numbers were reported across both groups (five in the CrM group, six in the Placebo group) [32,71,79,80]. Chilibeck et al. was the only study to report a statistically significant difference in adverse events across groups when GIT events were combined with reports of muscle cramping (*p* value < 0.05). However, this study found no statistical difference between groups for the overall number of adverse events reported [71].

3.7. Renal System

Fourteen studies reported on renal system biomarkers, assessed by either blood or urine, or a combination of both. Eight provided laboratory values by groups, pre-and post-intervention [32,65,69,70,75,80,81,85]. Of the remaining six studies identified, four reported non-significant differences in biomarkers across groups [34,67,71,76], one reported creatinine values as a range across groups pre (0.65–0.85) and post-intervention (0.74–0.88) with no statistical difference seen (*p* = 0.16) [33] and the last reported solely on change in serum creatinine levels for the purpose of assessing treatment compliance [35]. Figure 6A represents the studies that reported the mean percentage change in renal blood biomarkers by group, post-intervention, while Figure 6B represents the studies that reported the mean percentage change in renal urine biomarkers by group, post-intervention. Serum creatinine (Crn), was the most assessed renal biomarker (*n* = 9) showing none [80] through to a 14.5% change [32]

post-intervention. All levels remained within normal reference ranges and all studies reported no significant differences in serum creatinine between groups over time [32–34,65,70,75,76,80,81]. No significant differences were found in blood urea nitrogen (BUN) [32,69,75], plasma urea levels [65, 67,70,71,76,81], estimated glomerular filtration rate (eGFR) [81] or creatinine clearance rates (CrnCl) [71]. Chilibeck et al. reported one adverse effect in renal function in the placebo arm of the study, with one participant recording a low creatinine clearance at four and twelve months requiring cessation of placebo, but continuation in the study [71]. Of the four studies that assessed renal urine biomarkers, three noted no significant difference between groups post-intervention [65,80,81], whilst one noted an increase in urinary creatinine in the CrM group, significant only at day one and day three of supplementation in participants receiving a 20 g per day loading dose and not significant at the completion of treatment when participants were on a 5 g per day, maintenance dose [85].

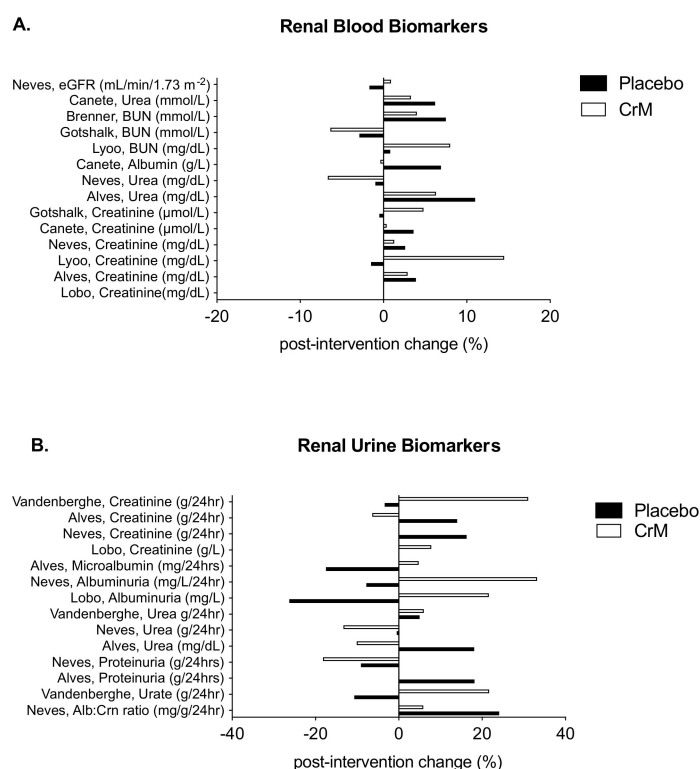


Figure 6. Changes in renal blood biomarkers (A) and urine biomarkers (B) within placebo (solid bar) and CrM (hatched bar) groups. Data are presented as % change pre-to post-intervention. Units are expressed as presented in the original manuscripts. BUN = blood urea nitrogen, Alb:Crn = albumin:creatinine ratio.

3.8. Hepatic System

Eight studies reported on biomarkers of hepato-biliary function, with all reporting no statistically significant difference across groups in any measured liver enzymes. Five provided laboratory values by groups, pre-and post-intervention [32,69,70,75,80]. Three studies that did not provide values reported non-significant differences in biomarkers across groups [67,71,76]. Figure 7 represents the mean percentage of change in blood biomarkers by group, post-intervention, in these studies. Two studies reported elevation in individual liver biomarkers. Lyyo et al. reported three participants (two in CrM group and one in the placebo group) with mild elevation of liver transaminases above the normal reference range at the end of the eight-week study [32]. Chilibeck et al., reported two adverse effects in the placebo arm of his study; one with an elevated ALP which resolved by study end, and another, an elevated bilirubin level, which remained elevated at the study end. Both women continued in the study, but placebo treatment was discontinued [71].

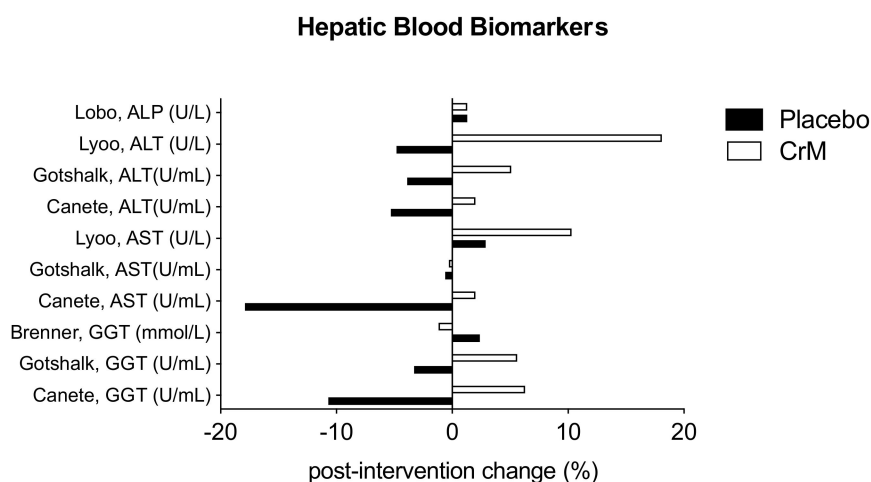
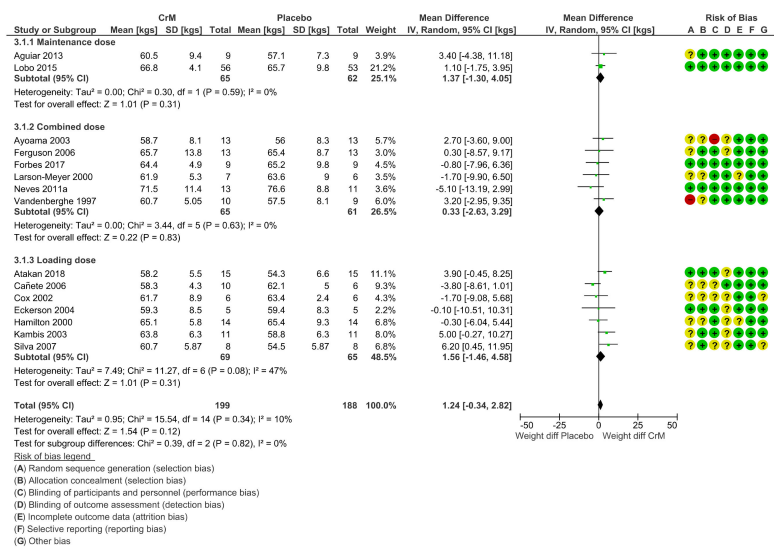


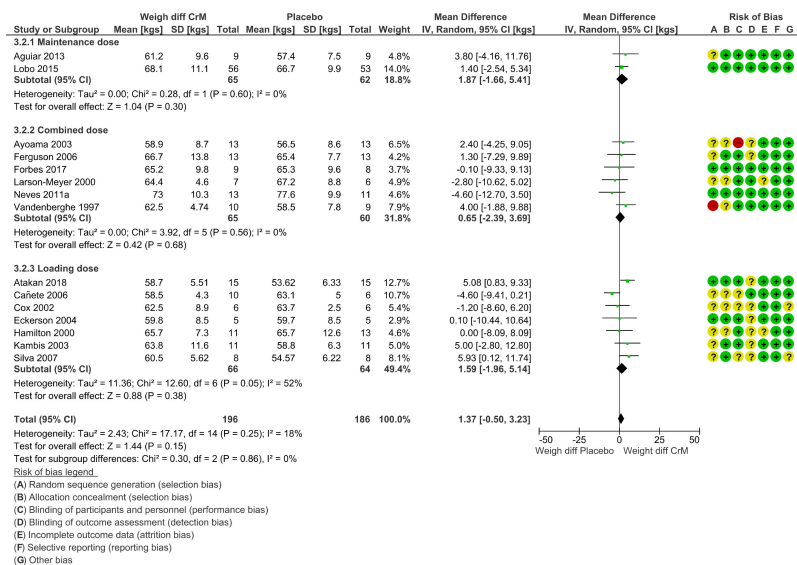
Figure 7. Changes in hepatic blood biomarkers within placebo (solid bar) and CrM (hatched bar) groups. Data are presented as % change pre- to post-intervention. Units are expressed as presented in the original manuscripts. ALP = alkaline phosphatase; AST = aspartate aminotransferase; ALT = alanine aminotransferase; GGT = gamma glutamyl transferase.

3.9. Body Composition Effects

Twenty-three studies reported on some measure of body composition change, but only fifteen studies provided pre- and post-intervention weight in kgs suitable for meta-analysis. There was no difference in mean weight between groups, pre-intervention (MD 1.24 (95% CI $-0.34, 2.82$); Figure 8a) to post-intervention (MD 1.37 kg (95% CI $-0.50, 3.23$); Figure 8b). Studies ($n = 8$) not included in the meta-analysis reported on different parameters of change in body composition. CrM did not change lean body mass over time in young healthy swimmers [84], or body mass (BM) in young healthy females performing repeated cycle ergometer tests [63]. Brenner et al. determined no supplement effect in young healthy lacrosse players, as both groups experienced a 0.5 kg increase in body weight, with a tendency toward a decrease in percentage of body fat (% BF) in the CrM group over time [69]. Kondo et al. reported no significant difference in body weight gains (measured in pounds) across all four groups of adolescents with MDD (three in CrM group and one in the Placebo group) [33]. Gualano and Chilibeck et al. both reported on post-menopausal females undertaking resistance training, with improvement in appendicular lean muscle mass and no change in whole body lean tissue mass over time, respectively [71,76]. Only two studies reported an increase in body mass, Gotshalk et al. reported no change in % BF, but an increase in BM and fat free mass in the CrM group only [75], whilst Ramirez-Campillo et al. attributed a change in body mass index (BMI) of 1.4% (pre-to post-intervention), to CrM supplementation, as the change did not occur in either the placebo or control arm of the study [82]. Studies not reporting on body composition were all therapeutic trials [32,34,35,61,65,68].



(A)



(B)

Figure 8. (A) Difference in body weights per group, pre-intervention, stratified by dosing regimens. Within Forest Plot, Study or Subgroup = study stratified by dosing regimens; Mean = mean body weight per group in kgs; SD = standard deviation; Total = total number of participants in study group; Weight = amount of information contributed by study; I-V = Inverse Variance random effects model. (B) Difference in body weights per group, post-intervention, stratified by dosing regimens. Within Forest Plot, Study or Subgroup = study stratified by dosing regimens; Mean = mean body weight per group in kgs; SD = standard deviation; Total = total number of participants in study group; Weight = amount of information contributed by study; IV = Inverse variance model; Random = random effects model; Risk of bias; + (green) = low risk of bias, ? (yellow) = unclear risk of bias, - (red) = high risk of bias.

3.10. A Comment on Cardiovascular Effects or Events

Only two of the 29 included studies reported outcomes in the cardiovascular system. No serious adverse outcomes were reported. In terms of adverse events, one study reported no significant difference in blood pressure across groups after seven days of supplementation, and another reported palpitations in a participant in the placebo arm of the trial [32,75]. Whilst headache was reported in two open label studies and one placebo-controlled study, two of these studies deemed symptoms more likely related to the concomitant medication participants were taking [32,35].

3.11. Dosing Regimens

Dosing regimens varied across studies, with three regimens identified; loading dose ($n = 10$ studies; 34.5%) combination regimen (a loading dose followed by a maintenance dose) ($n = 10$ studies; 34.5%), or a maintenance dose only ($n = 9$ studies; 31%). The median loading dose was 20 g per day (range 15–30 g) and the median maintenance dose was 5 g per day (range 1–10 g). For those on loading regimens only (short-term regimen), participants were loaded between 4 and 9 days, (mean of 5 days). Combination regimens used similar loading dose regimens of 5–7 days with the subsequent maintenance regimen varying between 21 and 166 days (mean of 76 days), (medium-term regimen), while those on a maintenance dose remained on intervention for between 42 to 365 days (mean of 126 days; long-term regimen). Dosing regimens did not significantly modify the overall effect of adverse outcome reporting; with all dosing regimens subject to meta-analysis, remaining statistically non-significant.

3.12. Withdrawals, Loss to Follow Up, Cessation of Intervention

Sixteen studies reported on attrition; ten were therapeutic trials and six were ergogenic studies. Total attrition rate was low when summed across all studies (14%) but ranged from 1% to 47% in individual studies. Dosing regimens did not affect attrition rates; however, dosing durations and populations studied did. Higher attrition rates (>20%) were reported in five studies, of which four were therapeutic trials. Two continued duration of therapy for one year [71,80] and two had populations with treatment resistant therapy, or who had previous poor treatment compliance [32,61]. While Lyoo et al., found no difference in losses across groups, they did speculate on the higher discontinuation rate in the creatine group in the first two weeks, explaining it could have been due to intolerance, lack of efficacy, or both [32]. The one ergogenic study reporting higher than 20% attrition was conducted over a longer duration of 3 months [79]. The ratio of withdrawal, loss to follow up, or premature cessation of interventions was the same across groups, fifty-three in CrM group and fifty-three in the Placebo group, with a variety of reasons reported for attrition across studies (File S3).

4. Discussion

This is the first systematic review to report comprehensively on adverse outcomes in females who ingested CrM. We found no mortality or serious adverse events associated with CrM supplementation in females, which agrees with previous safety reviews in male or mixed sex populations [22,23,27,86–92].

Whilst deaths have been reported in therapeutic trials of mixed populations taking concurrent CrM, all participants had serious pre-existing comorbidities, or advanced disease processes and none of the deaths were attributable to the creatine intervention [93–103]. Three deaths have previously been reported in males using pre-workout supplements containing creatine; however, no direct causality has ever been established between creatine and these case reports. In all cases males were taking supplements with other ingredients, or other medications, and in some cases had pre-existing comorbidities [104–106].

To the best of our knowledge, serious adverse outcomes have only been described in males and only in case reports. These adverse outcomes included renal dysfunction [107–115], increased lower leg compartment syndrome [104,116], rhabdomyolysis [116–118], ischaemic stroke [119], haemorrhagic stroke [120], liver injury [121,122], atrial fibrillation [123], acute cholestatic liver

injury [124] and toxic hepatitis [122]. These events are not replicated in placebo controlled clinical trials [125–129]. Compartment syndrome has been reported in the literature often associated with exertional rhabdomyolysis in males undertaking intensive exercise, and supplementing with creatine, [104,116] but there is no evidence supporting a causal link between these symptoms and creatine supplements [87,130]. The only female in this review who experienced this event had symptoms that preceded the commencement of creatine supplementation, and the symptom was reported as injury related [69].

No other serious adverse events have been reported in the female literature and our meta-analysis found no statistically significant difference in adverse events in placebo-controlled trials. This finding is supported by both the Norwegian Scientific Committee for Food Safety [131] and Brudnak et al., who reported that side effects such as GIT symptoms, muscle cramping, and nephritis due to CrM supplementation were not supported when subjected to scrutiny in blinded, placebo-controlled studies, indicating reporting was mostly anecdotal and not evidence based [132].

GIT disturbances reported in male or mixed sex populations have been associated with higher dosing regimens, dosing regimens in excess of those recommended by the manufacturer, or concomitant supplementation regimens [96,133,134]. Our findings support other published literature that found no evidence of a significant effect on GIT symptoms, muscle cramping, or renal and hepatic changes across placebo-controlled trials [15,19,90,94,134–138]. This included studies in middle to older age male, or mixed sex populations treated with creatine [94,139–143] and in younger mixed sex populations [25,135,144].

Serum creatinine remains the most commonly used biomarker of renal function and this corresponds to our review. Previous studies have shown no significant change in serum creatinine levels [94,135,144–149], or a mild to modest change of up to 13% with creatine supplementation [150–152], which correlates with the ranges reported in our studies. Serum creatinine remained within normal range across all studies over the time of supplementation, and this finding corresponds with a previous review that found 91% of studies reported no change or change that remained within normal limits [87]. The potential for change in serum creatinine is considered a normal physiological response to creatine supplementation due to the spontaneous conversion of creatine to creatinine, [2] but like others, we would caution against the use of a single biomarker to interpret a change in renal function. [15,35,87,153,154].

This review found no evidence that CrM supplementation negatively impacts liver function in females, which corresponds to the findings of other studies and reviews [13,138,145,149,152, 155–157]. The reported mild elevations across two studies in our review, although not explained by the authors, may be explained by the individual characteristics and potential comorbidities of the study populations, and adjunct treatments or therapies [32,71]. The high intra-individual variability in common liver function tests, make interpretation of one-off changes in liver function difficult, and caution should be applied, with interpretation of the full clinical picture [158,159]. Creatine supplementation appears to have no effect on blood pressure; however, this finding is based on limited data and should be viewed with caution. There have been no systematic reviews on blood pressure changes or adverse cardiovascular effects of creatine supplementation in relatively healthy male or mix-sex populations. However, our finding is consistent with no reported blood pressure effect in three published male only placebo-controlled trials with creatine [160–162] and one mix-sex study [144]. There has been one systematic review on the use of creatine and creatine analogues in hypertension and cardiovascular disease, which also concluded no change in blood pressure with creatine supplementation in myocardial infarction or heart failure trials [163]. Overall, more thorough investigations are required to definitively rule in or out adverse cardiovascular effects of creatine supplementation in both male and female populations.

Weight gain has been the most reported 'side effect' of creatine supplementation in the literature for decades but is mostly reported in males. There is a strongly held perception that creatine supplementation may induce a weight change, and this may not be viewed favourably by females,

particularly those of reproductive age, female athletes and coaches [62]. Our review found no significant change in body weight in females, which is in line with other studies reporting none to minimal effect on body composition change in females when compared to males [144,164].

Attrition rates can confound reporting of adverse outcomes [46,47]; however, the studies in our review generally showed low attrition and reported their rates, reducing the impact of selective reporting bias. It is likely that higher attrition rates in therapeutic trials are due to the challenging population groups and the length of time required to determine the effect on study outcome. Future therapeutic trials should consider the duration of supplementation to affect the primary outcome, taking into consideration the population characteristics and factor in potential higher attrition rates ($\geq 20\%$) in their sample size calculations.

5. Strengths and Limitations

This is the first systematic review describing the risk of adverse outcomes in females taking CrM supplementation. The studies included were generally well designed with a low overall risk of bias, excellent reporting on attrition rates with limited to, no, missing data. Our tight selection criteria reduced heterogeneity across studies, meaning the outcomes can confidently be applied to non-pregnant females from menarche to post-menopausal age.

There are some limitations to this review. Like other reviews, we found most studies had small sample sizes and dosing regimens varied, making comparisons challenging [91]. Our review attempted to address this by pooling data and stratifying studies by dosing regimens. Study design and methodology affect how adverse event data is collected and reported, which can contribute to overall bias [46,165–167]. Passive surveillance can lead to a potential under-reporting of events [47], but at the same time, over-reporting can occur in placebo-controlled trials where directed questioning may lead to increased reporting of negative effects in placebo groups, known as the nocebo phenomenon [166,168]. It is possible that different methodologies employed (over and under reporting) affected the findings of this review, as could the tools or instruments used to measure change in body weight pre-and post-intervention. [74,169,170].

6. Conclusions

This systematic review provides the first comprehensive description of adverse outcomes reported in post-pubertal, non-pregnant females taking CrM providing reassurance that this dietary supplement appears safe at different dosing regimens. Whilst there may be variation in the number of events reported with creatine supplementation, this variation is not statistically significant. In females, CrM does not appear to cause weight gain, nor adversely impact other major organ systems. Our findings support those of previous safety reviews performed in male or mixed sex populations that conclude CrM is a safe dietary supplement when consumed in doses and regimens recommended by manufacturers and current sporting and government safety bodies worldwide. Future studies should consider larger sample sizes in more homogenous groups (sex specific or disease specific only) and incorporate surveillance and mandatory reporting of adverse outcomes into the study design.

Supplementary Materials: The following are available online at <http://www.mdpi.com/2072-6643/12/6/1780/s1>, File S1: [A] Broad search strategy. Used for all databases (All creatine terms AND All creatine supplementation terms). [B] Narrow (refined) search strategy. Used for Ovid and Embase (with all adverse events (broad and narrow), excluding animals, and excluding creatine deficiencies) to validate against broad search strategy; File S2: [A] Number of adverse events reported by study. [B] Statements outlining generic reporting of adverse events by study. [C] Studies only reporting on change in body composition; File S3: Withdrawals, losses or cessation of intervention in females taking oral creatine monohydrate versus placebo.

Author Contributions: D.L.d.G. was involved in research design along with K.R.P. and S.J.E., D.L.d.G. conducted the research and was supported through statistical analysis by M.L.D.-T. Interpretation of the results was overseen by D.L.d.G., R.J.S., K.R.P. and S.J.E., D.L.d.G. wrote the paper with edits being provided by all authors. S.J.E. takes primary responsibility for final content. All authors have read and agreed to the published version of the manuscript.

Funding: This research received no external funding.

Acknowledgments: The authors would like to acknowledge Monash Librarian, Anne Young for her support and guidance given to the lead author prior to undertaking the systematic review and to the Document Delivery team at Monash University who provided prompt delivery of requested manuscripts for this review. The authors also thank Professor Rory Wolfe who provided biostatistics advice for this systematic review and meta-analysis.

Conflicts of Interest: The authors have no conflicts of interest to declare. Ritchie Centre, Hudson Institute of Medical Research, 27-31 Wright St, Clayton, Melbourne, Australia.

Sources of Support: No direct funding was sought or obtained for this review; however, this work was supported by the Victorian Government's Operational Infrastructure Support Program to Hudson Institute of Medical Research, and the Andrea Logan Memorial Trust. During these studies SJE was supported by NHMRC Early Career Research Fellowship, KRP by a Monash University Health Practitioner Research Fellowship, and MDT was supported by a NHMRC CRE Stillbirth Fellowship. This review was registered at www.crd.york.ac.uk/prospero/as CRD42018105999.

Short Running Head: Creatine supplementation in women; a safety review.

Abbreviations

ATP	Adenosine triphosphate
CI	Confidence Interval
CrM	Creatine Monohydrate
I ²	Statistical measure of heterogeneity
MD	Mean Difference
PI	Placebo
RR	Risk Ratio

References

- Wallimann, T.; Wyss, M.; Brdiczka, D.; Nicolay, K.; Eppenberger, H.M. Intracellular compartmentation, structure and function of creatine kinase isoenzymes in tissues with high and fluctuating energy demands: The 'phosphocreatine circuit' for cellular energy homeostasis. *Biochem. J.* **1992**, *281*, 21–40. [[CrossRef](#)] [[PubMed](#)]
- Wyss, M.; Kaddurah-Daouk, R. Creatine and creatinine metabolism. *Physiol. Rev.* **2000**, *80*, 1107–1213. [[CrossRef](#)] [[PubMed](#)]
- Stöckler, S.; Hanefeld, F.; Frahm, J. Creatine replacement therapy in guanidinoacetate methyltransferase deficiency, a novel inborn error of metabolism. *Lancet* **1996**, *348*, 789–790. [[CrossRef](#)]
- Schulze, A. Creatine deficiency syndromes. *Mol. Cell. Biochem.* **2003**, *244*, 143–150. [[CrossRef](#)] [[PubMed](#)]
- Braissant, O.; Henry, H.; Beard, E.; Uldry, J. Creatine deficiency syndromes and the importance of creatine synthesis in the brain. *Amino Acids* **2011**, *14*, 1315–1324. [[CrossRef](#)] [[PubMed](#)]
- Rosas, H.D.; Doros, G.; Gevorkian, S.; Malarick, K.; Reuter, M.; Coutu, J.P.; Triggs, T.D.; Wilkens, P.J.; Matson, W.; Salat, D.H.; et al. PRECREST: A phase II prevention and biomarker trial of creatine in at-risk huntington disease. *Neurology* **2014**, *82*, 850–857. [[CrossRef](#)]
- Atassi, N.; Ratai, E.M.; Greenblatt, D.J.; Pulley, D.; Zhao, Y.; Bombardier, J.; Wallace, S.; Eckenrode, J.; Cudkowicz, M.; Dibernardo, A. A phase I, pharmacokinetic, dosage escalation study of creatine monohydrate in subjects with amyotrophic lateral sclerosis. *Amyotroph. Lateral Scler.* **2010**, *11*, 508–513. [[CrossRef](#)]
- Pastula, D.M.; Moore, D.H.; Bedlack, R.S. Creatine for amyotrophic lateral sclerosis/motor neuron disease. *Cochrane Database Syst. Rev.* **2012**, *12*, CD005225. [[CrossRef](#)]
- Tarnopolsky, M.A.; Mahoney, D.J.; Vajsar, J.; Rodriguez, C.; Doherty, T.J.; Roy, B.D.; Biggar, D. Creatine monohydrate enhances strength and body composition in Duchenne muscular dystrophy. *Neurology* **2004**, *62*, 1771–1777. [[CrossRef](#)]
- Kley, R.A.; Tarnopolsky, M.A.; Vorgerd, M. Creatine for treating muscle disorders. *Cochrane Database Syst. Rev.* **2011**, *2*, CD004760. [[CrossRef](#)]
- Bender, A.; Klopstock, T. Creatine for neuroprotection in neurodegenerative disease: End of story? *Amino Acids* **2016**, *48*, 1929–1940. [[CrossRef](#)] [[PubMed](#)]
- Harris, R.C.; Soderlund, K.; Hultman, E. Elevation of creatine in resting and exercised muscle of normal subjects by creatine supplementation. *Clin. Sci.* **1992**, *83*, 367–374. [[CrossRef](#)] [[PubMed](#)]

13. Sipila, I.; Rapola, J.; Simell, O.; Vannas, A. Supplementary creatine as a treatment for gyrate atrophy of the choroid and retina. *N. Engl. J. Med.* **1981**, *304*, 867–870. [[CrossRef](#)]
14. Kreider, R.B.; Kalman, D.S.; Antonio, J.; Ziegenfuss, T.N.; Wildman, R.; Collins, R.; Candow, D.G.; Kleiner, S.M.; Almada, A.L.; Lopez, H.L. International Society of Sports Nutrition position stand: Safety and efficacy of creatine supplementation in exercise, sport, and medicine. *J. Int. Soc. Sports Nutr.* **2017**, *14*, C18. [[CrossRef](#)] [[PubMed](#)]
15. Yoshizumi, W.M.; Tsourounis, C. Effects of creatine supplementation on renal function. *J. Herb. Pharmacother.* **2004**, *4*, 1–7. [[CrossRef](#)] [[PubMed](#)]
16. Dalbo, V.J.; Roberts, M.D.; Stout, J.R.; Kerksick, C.M. Putting to rest the myth of creatine supplementation leading to muscle cramps and dehydration. *Br. J. Sports Med.* **2008**, *42*, 567–573. [[CrossRef](#)]
17. Balestrino, M.; Adriano, E. Beyond sports: Efficacy and safety of creatine supplementation in pathological or parapsychological conditions of brain and muscle. *Med. Res. Rev.* **2019**, *39*, 2427–2459. [[CrossRef](#)]
18. Kley, R.A.; Tarnopolsky, M.A.; Vorgerd, M. Creatine for treating muscle disorders: Meta-analysis of randomised controlled trials. *Neuromuscul. Disord.* **2010**, *20*, 657–658. [[CrossRef](#)]
19. E Silva, A.D.S.; Pertille, A.; Barbosa, C.G.R.; de Oliveira Silva, J.A.; de Jesus, D.V.; Ribeiro, A.G.S.V.; Baganha, R.J.; de Oliveira, J.J. Effects of Creatine Supplementation on Renal Function: A Systematic Review and Meta-Analysis. *J. Ren. Nutr.* **2019**, *29*, 480–489. [[CrossRef](#)]
20. Lopez, R.M.; Casa, D.J.; McDermott, B.P.; Ganio, M.S.; Armstrong, L.E.; Maresh, C.M. Does creatine supplementation hinder exercise heat tolerance or hydration status? A systematic review with meta-analyses. *J. Athl. Train.* **2009**, *44*, 215–223. [[CrossRef](#)]
21. Bolotte, C.P. Creatine supplementation in athletes: Benefits and potential risks. *J. La. State Med Soc.* **1998**, *150*, 325–327. [[PubMed](#)]
22. Graham, A.S.; Hatton, R.C. Creatine: A Review of Efficacy and Safety. *J. Am. Pharm. Assoc.* **1996**, *39*, 803–810. [[CrossRef](#)]
23. Poortmans, J.R.; Francaux, M. Adverse effects of creatine supplementation—Fact or fiction? *Sports Med.* **2000**, *30*, 155–170. [[CrossRef](#)] [[PubMed](#)]
24. Juhn, M.S.; Tarnopolsky, M. Potential side effects of oral creatine supplementation: A critical review. *Clin. J. Sport Med.* **1998**, *8*, 298–304. [[CrossRef](#)]
25. Kim, H.J.; Kim, C.K.; Carpentier, A.; Poortmans, J.R. Studies on the safety of creatine supplementation. *Amino Acids* **2011**, *40*, 1409–1418. [[CrossRef](#)]
26. Sobolewski, E.J.; Thompson, B.J.; Smith, A.E.; Ryan, E.D. The Physiological Effects of Creatine Supplementation on Hydration: A Review. *Am. J. Lifestyle Med.* **2011**, *5*, 320–327. [[CrossRef](#)]
27. Gualano, B.; Roschel, H.; Lancha, A.H., Jr.; Brightbill, C.E.; Rawson, E.S. In sickness and in health: The widespread application of creatine supplementation. *Amino Acids* **2012**, *43*, 519–529. [[CrossRef](#)]
28. Glenn, J.M.; Gray, M.; Gualano, B.; Roschel, H. The Ergogenic Effects of Supplemental Nutritional Aids on Anaerobic Performance in Female Athletes. *Strength Cond. J.* **2016**, *38*, 105–120. [[CrossRef](#)]
29. Wilkinson, T.J.; Lemmey, A.B.; Jones, J.G.; Sheikh, F.; Ahmad, Y.A.; Chitale, S.; Maddison, P.J.; O'Brien, T.D. Can Creatine Supplementation Improve Body Composition and Objective Physical Function in Rheumatoid Arthritis Patients? A Randomized Controlled Trial. *Arthritis Care Res.* **2016**, *68*, 729–737. [[CrossRef](#)]
30. Malin, S.K.; Cotugna, N.; Fang, C.S. Effect of creatine supplementation on muscle capacity in individuals with multiple sclerosis. *J. Diet. Suppl.* **2008**, *5*, 20–32. [[CrossRef](#)]
31. Fairweather, D.; Rose, N.R. Women and autoimmune diseases. *Emerg. Infect. Dis.* **2004**, *10*, 2005–2011. [[CrossRef](#)] [[PubMed](#)]
32. Lyoo, I.K.; Yoon, S.; Kim, T.S.; Hwang, J.; Kim, J.E.; Won, W.; Bae, S.; Renshaw, P.F. A randomized, double-blind placebo-controlled trial of oral creatine monohydrate augmentation for enhanced response to a selective serotonin reuptake inhibitor in women with major depressive disorder. *Am. J. Psychiatry* **2012**, *169*, 937–945. [[CrossRef](#)] [[PubMed](#)]
33. Kondo, D.G.; Forrest, L.N.; Shi, X.; Sung, Y.H.; Hellem, T.L.; Huber, R.S.; Renshaw, P.F. Creatine target engagement with brain bioenergetics: A dose-ranging phosphorus-31 magnetic resonance spectroscopy study of adolescent females with SSRI-resistant depression. *Amino Acids* **2016**, *48*, 1941–1954. [[CrossRef](#)]
34. Kondo, D.G.; Sung, Y.H.; Hellem, T.L.; Fiedler, K.K.; Shi, X.; Jeong, E.K.; Renshaw, P.F. Open-label adjunctive creatine for female adolescents with SSRI-resistant major depressive disorder: A 31-phosphorus magnetic resonance spectroscopy study. *J. Affect. Disord.* **2011**, *135*, 354–361. [[CrossRef](#)] [[PubMed](#)]

35. Hellem, T.L.; Sung, Y.H.; Shi, X.F.; Pett, M.A.; Latendresse, G.; Morgan, J.; Huber, R.S.; Kuykendall, D.; Lundberg, K.J.; Renshaw, P.F. Creatine as a novel treatment for depression in females using methamphetamine: A pilot study. *J. Dual Diagn.* **2015**, *11*, 189–202. [[CrossRef](#)]
36. Accortt, E.E.; Freeman, M.P.; Allen, J.J. Women and major depressive disorder: Clinical perspectives on causal pathways. *J. Womens Health* **2008**, *17*, 1583–1590. [[CrossRef](#)]
37. Ireland, Z.; Castillo-Melendez, M.; Dickinson, H.; Snow, R.; Walker, D.W. Maternal diet supplemented with creatine from mid-pregnancy protects the newborn spiny mouse brain from birth hypoxia. *Neuroscience* **2011**, *194*, 372–379. [[CrossRef](#)]
38. LaRosa, D.A.; Ellery, S.J.; Snow, R.J.; Walker, D.W.; Dickinson, H. Maternal creatine supplementation during pregnancy prevents acute and long-term deficits in skeletal muscle after birth asphyxia: A study of structure and function of hind limb muscle in the spiny mouse. *Pediatric Res.* **2016**, *80*, 852–860. [[CrossRef](#)]
39. Ellery, S.J.; Dickinson, H.; McKenzie, M.; Walker, D.W. Dietary interventions designed to protect the perinatal brain from hypoxic-ischemic encephalopathy—Creatine prophylaxis and the need for multi-organ protection. *Neurochem. Int.* **2016**, *95*, 15–23. [[CrossRef](#)]
40. Sartini, S.; Lattanzi, D.; Di Palma, M.; Savelli, D.; Eusebi, S.; Sestili, S.; Cuppini, R.; Ambrogini, P. Maternal Creatine Supplementation Positively Affects Male Rat Hippocampal Synaptic Plasticity in Adult Offspring. *Nutrients* **2019**, *11*, 2014. [[CrossRef](#)]
41. Sartini, S.; Sestili, P.; Colombo, E.; Martinelli, C.; Bartolini, F.; Ciuffoli, S.; Lattanzi, D.; Sisti, D.; Cuppini, R. Creatine affects in vitro electrophysiological maturation of neuroblasts and protects them from oxidative stress. *J. Neurosci. Res.* **2012**, *90*, 435–446. [[CrossRef](#)] [[PubMed](#)]
42. De Guingand, D.L.; Ellery, S.J.; Davies-Tuck, M.L.; Dickinson, H. Creatine and pregnancy outcomes, a prospective cohort study in low-risk pregnant women: Study protocol. *BMJ Open* **2019**, *9*, e026756. [[CrossRef](#)] [[PubMed](#)]
43. Wallimann, T.; Harris, R. Creatine: A miserable life without it. *Amino Acids* **2016**, *48*, 1739–1750. [[CrossRef](#)] [[PubMed](#)]
44. Liberati, A.; Altman, D.G.; Tetzlaff, J.; Mulrow, C.; Gøtzsche, P.C.; Ioannidis, J.P.; Clarke, M.; Devereaux, P.J.; Kleijnen, J.; Moher, D. The PRISMA statement for reporting systematic reviews and meta-analyses of studies that evaluate healthcare interventions: Explanation and elaboration. *BMJ* **2009**, *339*, b2700. [[CrossRef](#)]
45. Golder, S.; Loke, Y.K.; Bland, M. Unpublished data can be of value in systematic reviews of adverse effects: methodological overview. *J. Clin. Epidemiol.* **2010**, *63*, 1071–1081. [[CrossRef](#)]
46. Golder, S.; Loke, Y.; McIntosh, H.M. Poor reporting and inadequate searches were apparent in systematic reviews of adverse effects. *J. Clin. Epidemiol.* **2008**, *61*, 440–448. [[CrossRef](#)]
47. Loke, Y.K.; Price, D.; Herxheimer, A. Systematic reviews of adverse effects: framework for a structured approach. *BMC Med Res. Methodol.* **2007**, *7*, 32. [[CrossRef](#)]
48. Golder, S.; Loke, Y.K.; Zorzela, L. Comparison of search strategies in systematic reviews of adverse effects to other systematic reviews. *Heal. Inf. Libr. J.* **2014**, *31*, 92–105. [[CrossRef](#)]
49. Van Bavel, D.; Moraes, R.; Tibirica, E. Effects of dietary supplementation with creatine on homocysteinemia and systemic microvascular endothelial function in individuals adhering to vegan diets. *Fundam. Clin. Pharmacol.* **2019**, *33*, 428–440. [[CrossRef](#)]
50. Ostojic, S.M.; Vranes, M.; Loncar, D.; Zenic, N.; Sekulic, D. Guanidinoacetic Acid and Creatine are Associated with Cardiometabolic Risk Factors in Healthy Men and Women: A Cross-Sectional Study. *Nutrients* **2018**, *10*, 87. [[CrossRef](#)]
51. Pereira, R.T.D.S.; Dörr, F.A.; Pinto, E.; Solis, M.Y.; Artioli, G.G.; Fernandes, A.L.; Murai, I.H.; Dantas, W.S.; Seguro, A.C.; Santinho, M.A.R.; et al. Can creatine supplementation form carcinogenic heterocyclic amines in humans? *J. Physiol.* **2015**, *593*, 3959–3971. [[CrossRef](#)] [[PubMed](#)]
52. Oladazimi, S.; Dabidiroshan, V.; Asadi, S. The effects of short time monohydrate creatine supplementation on systemic stress homeostasis following repeated maximum swimming in young women. *J. Kermanshah Univ. Med. Sci.* **2017**, *20*, 130–134.
53. Gualano, B.; Pannelli, V.D.S.; Roschel, H.; Artioli, G.G.; Neves, M.; Pinto, A.L.D.S.; Da Silva, M.E.R.; Cunha, M.R.; Otaduy, M.C.G.; Leite, C.D.C.; et al. Creatine in Type 2 Diabetes. *Med. Sci. Sports Exerc.* **2011**, *43*, 770–778. [[CrossRef](#)] [[PubMed](#)]

54. Lee, N.; Kim, I.; Park, S.; Han, D.; Ha, S.; Kwon, M.; Kim, J.; Byun, S.-H.; Oh, W.; Jeon, H.B.; et al. Creatine Inhibits Adipogenesis by Downregulating Insulin-Induced Activation of the Phosphatidylinositol 3-Kinase Signaling Pathway. *Stem Cells Dev.* **2015**, *24*, 983–994. [[CrossRef](#)]
55. Pinto, C.L.; Botelho, P.B.; Pimentel, G.D.; Campos-Ferraz, P.L.; Mota, J.F. Creatine supplementation and glycemic control: A systematic review. *Amino Acids* **2016**, *48*, 2103–2129. [[CrossRef](#)]
56. Rees, M. The age of menarche. *ORGYN Organon's Mag. Women Health* **1995**, *4*, 2–4.
57. The Nordic Cochrane Centre: The Cochrane Collaboration. *ReviewManager*, 5.3 ed.; The Nordic Cochrane Centre, The Cochrane Collaboration: Copenhagen, Denmark, 2014.
58. Higgins, J.P.T.; Green, S. (Eds.) *Cochrane Handbook for Systematic Reviews of Interventions*. Version 5.1.0 [updated March 2010]. The Cochrane Collaboration. 2011. Available online: www.handbook.cochrane.org (accessed on 1 June 2020).
59. Schunemann, H.; Brozek, J.; Guyatt, G.; Oxman, A. *Handbook for Grading the Quality of Evidence and the Strength of Recommendations Using the GRADE Approach*. Available online: <https://gdt.gradepro.org/app/handbook/handbook.html#h.m9385o5z3li7> (accessed on 12 March 2019).
60. Sterne, J.A.; Hernán, M.; Reeves, B.C.; Savović, J.; Berkman, N.D.; Viswanathan, M.; Henry, D.; Altman, U.G.; Ansari, M.T.; Boutron, I.; et al. ROBINS-I: a tool for assessing risk of bias in non-randomised studies of interventions. *BMJ* **2016**, *355*, i4919. [[CrossRef](#)] [[PubMed](#)]
61. Leader, A.; Amital, D.; Rubinow, A.; Amital, H. An Open-label Study Adding Creatine Monohydrate to Ongoing Medical Regimens in Patients with the Fibromyalgia Syndrome. *Ann. N. Y. Acad. Sci.* **2009**, *1173*, 829–836. [[CrossRef](#)]
62. Eckerson, J.M.; Stout, J.R.; Moore, G.A.; Stone, N.J.; Nishimura, K.; Tamura, K. Effect of two and five days of creatine loading on anaerobic working capacity in women. *J. Strength Cond. Res.* **2004**, *18*, 168–173.
63. Ledford, A.; Branch, J.D. Creatine supplementation does not increase peak power production and work capacity during repetitive wingate testing in women. *J. Strength Cond. Res.* **1999**, *13*, 394–399.
64. Aguiar, A.F.; Januário, R.S.B.; Junior, R.P.; Gerage, A.M.; Pina, F.L.C.; Nascimento, M.A.D.; Padovani, C.; Cyrino, E.S. Long-term creatine supplementation improves muscular performance during resistance training in older women. *Graefe's Arch. Clin. Exp. Ophthalmol.* **2012**, *113*, 987–996. [[CrossRef](#)] [[PubMed](#)]
65. Alves, C.R.; Santiago, B.M.; Lima, F.R.; Otaduy, M.C.G.; Calich, A.L.; Tritto, A.C.C.; Pinto, A.L.D.S.; Roschel, H.; Leite, C.C.; Benatti, F.B.; et al. Creatine Supplementation in Fibromyalgia: A Randomized, Double-Blind, Placebo-Controlled Trial. *Arthritis Care Res.* **2013**, *65*, 1449–1459. [[CrossRef](#)] [[PubMed](#)]
66. Atakan, M.M.; Karavelioğlu, M.B.; Harmancı, H.; Cook, M.; Bulut, S. Short term creatine loading without weight gain improves sprint, agility and leg strength performance in female futsal players. *Sci. Sports* **2019**, *34*, 321–327. [[CrossRef](#)]
67. Ayoama, R.; Hiruma, E.; Sasaki, H. Effects of creatine loading on muscular strength and endurance of female softball players. *J. Sports Med. Phys. Fit.* **2003**, *43*, 481–487.
68. Benton, D.; Donohoe, R. The influence of creatine supplementation on the cognitive functioning of vegetarians and omnivores. *Br. J. Nutr.* **2011**, *105*, 1100–1105. [[CrossRef](#)]
69. Brenner, M.; Rankin, J.W.; Sebolt, D. The Effect of Creatine Supplementation during Resistance Training in Women. *J. Strength Cond. Res.* **2000**, *14*, 207–213.
70. Cañete, S.; San Juan, A.F.; Pérez, M.; Gómez-Gallego, F.; López-Mojares, L.M.; Earnest, C.P.; Fleck, S.J.; Lucia, A. Does creatine supplementation improve functional capacity in elderly women? *J. Strength Cond. Res.* **2006**, *20*, 22–28.
71. Chilibeck, P.D.; Candow, D.G.; Landeryou, T.; Kaviani, M.; Paus-Jenssen, L. Effects of Creatine and Resistance Training on Bone Health in Postmenopausal Women. *Med. Sci. Sports Exerc.* **2015**, *47*, 1587–1595. [[CrossRef](#)]
72. Cox, G.; Mujika, I.; Tumilty, D.; Burke, L.M. Acute creatine supplementation and performance during a field test simulating match play in elite female soccer players. *Int. J. Sport Nutr. Exerc. Metab.* **2002**, *12*, 33–46. [[CrossRef](#)]
73. Ferguson, T.B.; Syrotuik, D.G. Effects of creatine monohydrate supplementation on body composition and strength indices in experienced resistance trained women. *J. Strength Cond. Res.* **2006**, *20*, 939–946.
74. Forbes, S.C.; Sletten, N.; Durrer, C.; Myette-Cote, É.; Candow, D.; Little, J.P. Creatine Monohydrate Supplementation Does Not Augment Fitness, Performance, or Body Composition Adaptations in Response to Four Weeks of High-Intensity Interval Training in Young Females. *Int. J. Sport Nutr. Exerc. Metab.* **2017**, *27*, 285–292. [[CrossRef](#)] [[PubMed](#)]

75. Gotshalk, L.A.; Kraemer, W.J.; Mendonca, M.A.G.; Vingren, J.L.; Kenny, A.M.; Spiering, B.A.; Hatfield, D.L.; Fragala, M.S.; Volek, J.S. Creatine supplementation improves muscular performance in older women. *Graefes Arch. Clin. Exp. Ophthalmol.* **2007**, *102*, 223–231. [[CrossRef](#)] [[PubMed](#)]
76. Gualano, B.; Macedo, A.R.; Alves, C.R.; Roschel, H.; Benatti, F.B.; Takayama, L.; Pinto, A.L.D.S.; Lima, F.R.; Pereira, R. Creatine supplementation and resistance training in vulnerable older women: A randomized double-blind placebo-controlled clinical trial. *Exp. Gerontol.* **2014**, *53*, 7–15. [[CrossRef](#)]
77. Hamilton, K.L.; Meyers, M.C.; Skelly, W.A.; Marley, R.J. Oral creatine supplementation and upper extremity anaerobic response in females. *Int. J. Sport Nutr. Exerc. Metab.* **2000**, *10*, 277–289. [[CrossRef](#)] [[PubMed](#)]
78. Kambis, K.W.; Pizzedaz, S.K. Short-term creatine supplementation improves maximum quadriceps contraction in women. *Int. J. Sport Nutr. Exerc. Metab.* **2003**, *13*, 87–96. [[CrossRef](#)]
79. Larson-Meyer, D.E.; Hunter, G.R.; Trowbridge, C.A.; Turk, J.C.; Ernest, J.M.; Torman, S.L.; Harbin, P.A. The Effect of Creatine Supplementation on Muscle Strength and Body Composition during Off-Season Training in Female Soccer Players. *J. Strength Cond. Res.* **2000**, *14*, 434–442.
80. Lobo, D.M.; Tritto, A.C.; Da Silva, L.R.; De Oliveira, P.B.; Benatti, F.B.; Roschel, H.; Nies, B.; Gualano, B.; Pereira, R. Effects of long-term low-dose dietary creatine supplementation in older women. *Exp. Gerontol.* **2015**, *70*, 97–104. [[CrossRef](#)]
81. Neves, M.; Gualano, B.; Roschel, H.; Lima, F.R.; De Sá-Pinto, A.L.; Seguro, A.C.; Shimizu, M.H.; Sapienza, M.T.; Fuller, R.; Lancha, A.H.; et al. Effect of creatine supplementation on measured glomerular filtration rate in postmenopausal women. *Appl. Physiol. Nutr. Metab.* **2011**, *36*, 419–422. [[CrossRef](#)]
82. Ramirez-Campillo, R.; González-Jurado, J.A.; Martínez, C.; Nakamura, F.Y.; Peñailillo, L.; Meylan, C.M.; Caniuqueo, A.; Cañas-Jamet, R.; Moran, J.; Martínez-Salazar, C.; et al. Effects of plyometric training and creatine supplementation on maximal-intensity exercise and endurance in female soccer players. *J. Sci. Med. Sport* **2016**, *19*, 682–687. [[CrossRef](#)]
83. Silva, A.J.; Reis, V.M.; Guidetti, L.; Alves, F.B.; Mota, P.; Freitas, J.; Baldari, C. Effect of creatine on swimming velocity, body composition and hydrodynamic variables. *J. Sports Med. Phys. Fit.* **2007**, *47*, 58–64.
84. Thompson, C.H.; Kemp, G.J.; Sanderson, A.L.; Dixon, R.M.; Styles, P.; Taylor, D.J.; Radda, G.K. Effect of creatine on aerobic and anaerobic metabolism in skeletal muscle in swimmers. *Br. J. Sports Med.* **1996**, *30*, 222–225. [[CrossRef](#)] [[PubMed](#)]
85. Vandenberghe, K.; Goris, M.; Van Hecke, P.; Van Leemputte, M.; Vangerven, L.; Hespel, P. Long-term creatine intake is beneficial to muscle performance during resistance training. *J. Appl. Physiol.* **1997**, *83*, 2055–2063. [[CrossRef](#)] [[PubMed](#)]
86. Bizzarini, E.; De Angelis, L. Is the use of oral creatine supplementation safe? *J. sports Med. Phys. Fit.* **2004**, *4*, 411–416.
87. Persky, A.M.; Rawson, E.S. Safety of creatine supplementation. *Membr. Biog.* **2007**, *46*, 275–289. [[CrossRef](#)]
88. Jager, R.; Purpura, M.; Shao, A.; Inoue, T.; Kreider, R.B. Analysis of the efficacy, safety, and regulatory status of novel forms of creatine. *Amino Acids* **2011**, *40*, 1369–1383. [[CrossRef](#)]
89. Avgerinos, K.I.; Spyrou, N.; Bougioukas, K.I.; Kapogiannis, D. Effects of creatine supplementation on cognitive function of healthy individuals: A systematic review of randomized controlled trials. *Exp. Gerontol.* **2018**, *108*, 166–173. [[CrossRef](#)]
90. Terjung, R.L.; Clarkson, P.; Eichner, E.R.; Greenhaff, P.L.; Hespel, P.J.; Israel, R.G.; Kraemer, W.J.; Meyer, R.A.; Spriet, L.L.; Tarnopolsky, M.A.; et al. American College of Sports Medicine roundtable. The physiological and health effects of oral creatine supplementation. *Med. Sci. Sports Exerc.* **2000**, *32*, 706–717.
91. Andres, S.; Ziegenhagen, R.; Trefflich, I.; Pevny, S.; Schultrich, K.; Braun, H.; Schänzer, W.; Hirsch-Ernst, K.; Schäfer, B.; Lampen, A. Creatine and creatine forms intended for sports nutrition. *Mol. Nutr. Food Res.* **2017**, *61*, 1600772. [[CrossRef](#)]
92. Francaux, M.; Poortmans, J.R. Side Effects of Creatine Supplementation in Athletes. *Int. J. Sports Physiol. Perform.* **2006**, *1*, 311–323. [[CrossRef](#)]
93. Rosenfeld, J.; King, R.M.; Jackson, C.E.; Bedlack, R.S.; Barohn, R.J.; Dick, A.; Phillips, L.H.; Chapin, J.; Gelinis, D.F.; Lou, J.-S. Creatine monohydrate in ALS: Effects on strength, fatigue, respiratory status and ALSFRS. *Amyotroph. Lateral Scler.* **2009**, *9*, 266–272. [[CrossRef](#)]
94. Groeneveld, G.J.; Beijer, C.; Veldink, J.H.; Kalmijn, S.; Wokke, J.H.J.; Berg, L.H.V.D. Few Adverse Effects of Long-Term Creatine Supplementation in a Placebo-Controlled Trial. *Int. J. Sports Med.* **2005**, *26*, 307–313. [[CrossRef](#)] [[PubMed](#)]

95. Deacon, S.J.; Vincent, E.E.; Greenhaff, P.L.; Fox, J.; Steiner, M.C.; Singh, S.J.; Morgan, M.D. Randomized Controlled Trial of Dietary Creatine as an Adjunct Therapy to Physical Training in Chronic Obstructive Pulmonary Disease. *Am. J. Respir. Crit. Care Med.* **2008**, *178*, 233–239. [[CrossRef](#)] [[PubMed](#)]
96. Hersch, S.M.; Schifitto, G.; Oakes, D.; Bredlau, A.-L.; Meyers, C.M.; Nahin, R.; Rosas, H.D. The CREST-E study of creatine for Huntington disease: A randomized controlled trial. *Neurology* **2017**, *89*, 594–601. [[CrossRef](#)] [[PubMed](#)]
97. Taes, Y.; Delanghe, J.R.; De Bacquer, D.; Langlois, M.; Stevens, L.; Geerolf, I.; Lameire, N.H.; De Vriese, A.S. Creatine supplementation does not decrease total plasma homocysteine in chronic hemodialysis patients. *Kidney Int.* **2004**, *66*, 2422–2428. [[CrossRef](#)]
98. Shefner, J.M.; Cudkowicz, M.E.; Schoenfeld, D.; Conrad, T.; Taft, J.; Chilton, M.; Urbinelli, L.; Qureshi, M.; Zhang, H.; Pestronk, A.; et al. A clinical trial of creatine in ALS. *Neurology* **2004**, *63*, 1656–1661. [[CrossRef](#)]
99. Norman, K.; Stübler, D.; Baier, P.; Schütz, T.; Ocran, K.; Holm, E.; Lochs, H.; Pirlich, M. Effects of creatine supplementation on nutritional status, muscle function and quality of life in patients with colorectal cancer—A double blind randomised controlled trial. *Clin. Nutr.* **2006**, *25*, 596–605. [[CrossRef](#)]
100. Fuld, J.P.; Kilduff, L.P.; Neder, J.A.; Pitsiladis, Y.; Lean, M.E.J.; Ward, S.A.; Cotton, M.M. Creatine supplementation during pulmonary rehabilitation in chronic obstructive pulmonary disease. *Thorax* **2005**, *60*, 531–537. [[CrossRef](#)]
101. Kuethe, F.; Krack, A.; Richartz, B.M.; Figulla, H.R. Creatine supplementation improves muscle strength in patients with congestive heart failure. *Pharmazie* **2006**, *61*, 218–222.
102. Sakellaris, G.; Nasis, G.; Kotsiou, M.; Tamiolaki, M.; Charissis, G.; Evangelidou, A. Prevention of traumatic headache, dizziness and fatigue with creatine administration. A pilot study. *Acta Paediatr.* **2007**, *97*, 31–34. [[CrossRef](#)]
103. Drory, V.E.; Gross, D. No effect of creatine on respiratory distress in amyotrophic lateral sclerosis. *Amyotroph. Lateral Scler. Other Mot. Neuron Disord.* **2002**, *3*, 43–46. [[CrossRef](#)]
104. Kuklo, T.R.; Tis, J.E.; Moores, L.K.; Schaefer, R.A. Fatal Rhabdomyolysis with Bilateral Gluteal, Thigh, and Leg Compartment Syndrome after the Army Physical Fitness Test. *Am. J. Sports Med.* **2000**, *28*, 112–116. [[CrossRef](#)] [[PubMed](#)]
105. Saidi, H.; Mani, M. Severe metabolic acidosis secondary to coadministration of creatine and metformin, a case report. *Am. J. Emerg. Med.* **2010**, *28*, e5–e6. [[CrossRef](#)] [[PubMed](#)]
106. Roukens, M.P.M.; Brugman, E.S.; Niessen, H.W.; Girbes, A.R.J. A case of fatal asthma after use of a dietary supplement containing creatine. *Neth. J. Crit. Care* **2013**, *17*, 32–33.
107. Pritchard, N.R.; Kalra, P.A. Renal dysfunction accompanying oral creatine supplements. *Lancet* **1998**, *351*, 1252–1253. [[CrossRef](#)]
108. Koshy, K.M.; Griswold, E.; Schneeberger, E.E. Interstitial Nephritis in a Patient Taking Creatine. *N. Engl. J. Med.* **1999**, *340*, 814–815. [[CrossRef](#)] [[PubMed](#)]
109. Sandhu, R.S.; Como, J.J.; Scalea, T.S. Renal Failure and Exercise-Induced Rhabdomyolysis in Patients Taking Performance-Enhancing Compounds. *J. Trauma Inj. Infect. Crit. Care* **2002**, *53*, 761–763. [[CrossRef](#)]
110. Revai, T.; Sapi, Z.; Benedek, S.; Kovács, A.; Kaszás, I.; Virányi, M.; Winkler, G. Severe nephrotic syndrome in a young man taking anabolic steroid and creatine long term. *Orv. Hetil.* **2003**, *144*, 2425–2427.
111. Sheth, N.; Sennett, B.; Berns, J.S. Rhabdomyolysis and acute renal failure following arthroscopic knee surgery in a college football player taking creatine supplements. *Clin. Nephrol.* **2006**, *65*, 134–137. [[CrossRef](#)]
112. Thorsteinsdottir, B.; Grande, J.P.; Garovic, V.D. Acute Renal Failure in a Young Weight Lifter Taking Multiple Food Supplements, Including Creatine Monohydrate. *J. Ren. Nutr.* **2006**, *16*, 341–345. [[CrossRef](#)]
113. Barisic, N.; Bernert, G.; Ipsiroglu, O.; Stromberger, C.; Müller, T.; Gruber, S.; Prayer, D.; Moser, E.; Bittner, R.E.; Stöckler-Ipsiroglu, S. Effects of oral creatine supplementation in a patient with MELAS phenotype and associated nephropathy. *Neuropediatrics* **2002**, *33*, 157–161. [[CrossRef](#)]
114. Basturk, T.; Aysim, O.; Abdulkadir, U. The effects of the recommended dose of creatine monohydrate on kidney function. *NDT Plus* **2010**, *4*, 23–24. [[CrossRef](#)]
115. Soltani, Z. When “creatine” increases creatinine. *J. Investig. Med.* **2011**, *59*, 459–460.
116. Robinson, S.J. Acute quadriceps compartment syndrome and rhabdomyolysis in a weight lifter using high-dose creatine supplementation. *J. Am. Board Fam. Pract.* **2000**, *13*, 134–137. [[CrossRef](#)]

117. Do, K.D.; Bellabarba, C.; Bhananker, S.M. Exertional Rhabdomyolysis in a Bodybuilder Following Overexertion: A Possible Link to Creatine Overconsumption. *Clin. J. Sport Med.* **2007**, *17*, 78–79. [[CrossRef](#)] [[PubMed](#)]
118. Pourmand, A.; Li, A.; Yiu, A.; Mazer-Amirshahi, M.; Shokoochi, H. Survival after profound acidosis and rhabdomyolysis due to dietary supplement use. *Am. J. Emerg. Med.* **2016**, *34*, e1–e3. [[CrossRef](#)]
119. Vahedi, K.; Domigo, V.; Amarenco, P.; Bousser, M. Ischaemic stroke in a sportsman who consumed MaHuang extract and creatine monohydrate for body building. *J. Neurol. Neurosurg. Psychiatry* **2000**, *68*, 112–113. [[CrossRef](#)] [[PubMed](#)]
120. Harris, B.F.; Winn, C.; Ableman, T.B. Hemorrhagic stroke in a young healthy male following use of pre-workout supplement animal rage XL. *Mil. Med.* **2017**, *182*, e2030–e2033. [[CrossRef](#)]
121. Waintraub, D.J.; Serouya, S.; Madrigal, E.; Benias, P.; Min, A.; Carr-Locke, D.L. A Rare Case of Severe Liver Injury Related to Whey Protein Supplementation. *Am. J. Gastroenterol.* **2016**, *111*, S945. [[CrossRef](#)]
122. Timcheh-Hariri, A.; Balali-Mood, M.; Aryan, E.; Sadeghi, M.; Riahi-Zanjani, B. Toxic hepatitis in a group of 20 male body-builders taking dietary supplements. *Food Chem. Toxicol.* **2012**, *50*, 3826–3832. [[CrossRef](#)]
123. Kammer, R.T. Lone atrial fibrillation associated with creatine monohydrate supplementation. *Pharmacother. J. Hum. Pharmacol. Drug Ther.* **2005**, *25*, 762–764. [[CrossRef](#)]
124. Whitt, K.; Ward, S.; Deniz, K.; Liu, L.; Odin, J.; Qin, L. Cholestatic Liver Injury Associated with Whey Protein and Creatine Supplements. *Semin. Liver Dis.* **2008**, *28*, 226–231. [[CrossRef](#)] [[PubMed](#)]
125. Greenhaff, P.; Pritchard, N.; Kalra, P.; Poortmans, J.R.; Francaux, M. Renal dysfunction accompanying oral creatine supplements. *Lancet* **1998**, *352*, 233–234. [[CrossRef](#)]
126. Kreider, R.B. 6 Creatine Fears: Real Concern or False Alarm? *Joe Weider's Muscle Fit.* **1999**, *60*, 160.
127. Poortmans, J.R.; Francaux, M. Renal dysfunction accompanying oral creatine supplements—reply. *Lancet* **1998**, *352*, 234. [[CrossRef](#)]
128. Wyss, M.; Schulze, A. Health implications of creatine: Can oral creatine supplementation protect against neurological and atherosclerotic disease? *Neuroscience* **2002**, *112*, 243–260. [[CrossRef](#)]
129. Shao, A.; Hathcock, J.N. Risk assessment for creatine monohydrate. *Regul. Toxicol. Pharmacol.* **2006**, *45*, 242–251. [[CrossRef](#)]
130. Rawson, E.S.; Clarkson, P.M.; Tarnopolsky, M.A. Perspectives on Exertional Rhabdomyolysis. *Sports Med.* **2017**, *47*, S33–S49. [[CrossRef](#)]
131. VKM; Panel on Nutrition, Dietetic Products. Novel Food and Allergy of the Norwegian Scientific Committee for Food Safety. In *Risk Assessment of "other Substances"—Creatine*; Opinion of the Panel on Nutrition, dietetic products, Novel Food an Allergy of the Norwegian Scientific Committee for Food Safety: Oslo, Norway, 2016.
132. Brudnak, M.A. Creatine: Are the benefits worth the risk? *Toxicol. Lett.* **2004**, *150*, 123–130. [[CrossRef](#)]
133. Ostojic, S.M.; Ahmetovic, Z. Gastrointestinal Distress After Creatine Supplementation in Athletes: Are Side Effects Dose Dependent? *Res. Sports Med.* **2008**, *16*, 15–22. [[CrossRef](#)]
134. Greenwood, M.; Farris, J.; Kreider, R.; Greenwood, L.; Byars, A. Creatine Supplementation Patterns and Perceived Effects in Select Division I Collegiate Athletes. *Clin. J. Sport Med.* **2000**, *10*, 191–194. [[CrossRef](#)]
135. Kreider, R.B.; Melton, C.; Rasmussen, C.; Greenwood, M.; Lancaster, S.; Cantler, E.C.; Milnor, P.; Almada, A. Long-term creatine supplementation does not significantly affect clinical markers of health in athletes. *Mol. Cell. Biochem.* **2003**, *244*, 95–104. [[CrossRef](#)]
136. Greenwood, M.; Kreider, R.B.; Melton, C.; Rasmussen, C.; Lancaster, S.; Cantler, E.; Milnor, P.; Almada, A. Creatine supplementation during college football training does not increase the incidence of cramping or injury. *Mol. Cell. Biochem.* **2003**, *244*, 83–88. [[CrossRef](#)]
137. Grindstaff, P.D.; Kreider, R.; Bishop, R.; Wilson, M.; Wood, L.; Alexander, C.; Almada, A. Effects of creatine supplementation on repetitive sprint performance and body composition in competitive swimmers. *Int. J. Sport Nutr.* **1997**, *7*, 330–346. [[CrossRef](#)]
138. Bashiri, J.; Gaeini, A.; Nikbakht, H.; Hadi, H.; Bashiri, M. Effect of concurrent creatine monohydrate ingestion and resistance training on hepatic enzymes activity levels in non-athlete males. *Iran. J. Endocrinol. Metab.* **2010**, *12*, 21–47,83.
139. Earnest, C.; Almada, A.; Mitchell, T.L. High-Performance Capillary Electrophoresis-Pure Creatine Monohydrate Reduces Blood Lipids in Men and Women. *Clin. Sci.* **1996**, *91*, 113–118. [[CrossRef](#)]
140. Bender, A.; Samtleben, W.; Elstner, M.; Klopstock, T. Long-term creatine supplementation is safe in aged patients with Parkinson disease. *Nutr. Res.* **2008**, *28*, 172–178. [[CrossRef](#)]

141. Cornelissen, V.; DeFoor, J.; Stevens, A.L.; Schepers, D.; Hespel, P.; Decramer, M.; Mortelmans, L.; Dobbels, F.; Vanhaecke, J.; Fagard, R.; et al. Effect of creatine supplementation as a potential adjuvant therapy to exercise training in cardiac patients: a randomized controlled trial. *Clin. Rehabil.* **2010**, *24*, 988–999. [\[CrossRef\]](#)
142. Gualano, B.; Ugrinowitsch, C.; Novaes, R.B.; Artioli, G.G.; Shimizu, M.H.; Seguro, A.C.; Harris, R.C.; Lancha, A.H. Effects of creatine supplementation on renal function: a randomized, double-blind, placebo-controlled clinical trial. *Graefes Arch. Clin. Exp. Ophthalmol.* **2008**, *103*, 33–40. [\[CrossRef\]](#)
143. Earnest, C.; Almada, A.; Milchell, T. Influence of chronic creatine supplementation on hepatorenal function. *FASEB J.* **1996**, *10*, 3–A790.
144. Mihic, S.; Macdonald, J.R.; McKenzie, S.; Tarnopolsky, M.A. Acute creatine loading increases fat-free mass, but does not affect blood pressure, plasma creatinine, or CK activity in men and women. *Med. Sci. Sports Exerc.* **2000**, *32*, 291–296. [\[CrossRef\]](#)
145. Robinson, T.M.; Sewell, D.; Casey, A.; Steenge, G.; Greenhaff, P.L. Dietary creatine supplementation does not affect some haematological indices, or indices of muscle damage and hepatic and renal function. *Br. J. Sports Med.* **2000**, *34*, 284–288. [\[CrossRef\]](#)
146. Poortmans, J.R.; Francaux, M. Long-term oral creatine supplementation does not impair renal function in healthy athletes. / Une supplementation orale en creatine sur le long terme ne deteriore pas la fonction renale chez des athletes en bonne sante. *Med. Sci. Sports Exerc.* **1999**, *31*, 1108–1110. [\[CrossRef\]](#)
147. Harris, R.; Almada, A.; Harris, D.B.; Dunnnett, M.; Hespel, P. The creatine content of Creatine Serum (TM) and the change in the plasma concentration with ingestion of a single dose. *J. Sports Sci.* **2004**, *22*, 851–857. [\[CrossRef\]](#)
148. Schroder, H.; Terrados, N.; Tramullas, A. Risk assessment of the potential side effects of long-term creatine supplementation in team sport athletes. *Eur. J. Nutr.* **2005**, *44*, 255–261. [\[CrossRef\]](#)
149. Mayhew, D.L.; Mayhew, J.L.; Ware, J.S. Effects of long-term creatine supplementation on liver and kidney functions in American college football players. *Int. J. Sport Nutr. Exerc. Metab.* **2002**, *12*, 453–460. [\[CrossRef\]](#)
150. Schedel, J.M.; Tanaka, M.; Tanaka, H.; Kiyonaga, A.; Shindo, M.; Terrier, P.; Schutz, Y. Consequences of one-week creatine supplementation on creatine and creatinine levels in athletes serum and urine. *Schweiz. Z. fur Sportmed. und Sporttraumatologie* **2000**, *48*, 111–116.
151. Schilling, B.; Stone, M.H.; Utter, A.; Kearney, J.T.; Johnson, M.; Coglianese, R.; Smith, L.; O'Bryant, H.S.; Fry, A.C.; Starks, M.; et al. Creatine supplementation and health variables: a retrospective study. *Med. Sci. Sports Exerc.* **2001**, *33*, 183–188. [\[CrossRef\]](#)
152. Kamber, M.; Koster, M.; Kreis, R.; Walker, G.; Boesch, C.; Hoppeler, H. Creatine supplementation—Part I: Performance, clinical chemistry, and muscle volume. *Med. Sci. Sports Exerc.* **1999**, *31*, 1763–1769. [\[CrossRef\]](#)
153. Williamson, L.; New, D. How the use of creatine supplements can elevate serum creatinine in the absence of underlying kidney pathology. *BMJ Case Rep.* **2014**, *2014*. [\[CrossRef\]](#)
154. Willis, J.; Jones, R.; Nwokolo, N.; Levy, J. Protein and creatine supplements and misdiagnosis of kidney disease. *BMJ* **2010**, *340*, b5027. [\[CrossRef\]](#)
155. Kreider, R.B. Effects of creatine supplementation on performance and training adaptations. *Mol. Cell. Biochem.* **2003**, *244*, 89–94. [\[CrossRef\]](#)
156. Ransone, J.; Park, D.H. Physiological effects of creatine supplementation: A meta-analysis. *Int. J. Appl. Sports Sci.* **2002**, *14*, 1–26.
157. Waldron, J.E.; Pendlay, G.W.; Kilgore, T.G.; Haff, G.G.; Reeves, J.S.; Kilgore, J.L. Concurrent creatine monohydrate supplementation and resistance training does not affect markers of hepatic function in trained weightlifters. *J. Exerc. Physiol. Online* **2002**, *5*, 57–64.
158. Lazo, M.; Selvin, E.; Clark, J.M. Brief communication: clinical implications of short-term variability in liver function test results. *Ann. Intern. Med.* **2008**, *148*, 348–352. [\[CrossRef\]](#)
159. Hall, P.; Cash, J. What is the Real Function of the Liver 'Function' Tests? *Ulst. Med J.* **2012**, *81*, 30–36.
160. Murphy, A.; Watsford, M.; Coutts, A.; Richards, D. Effects of creatine supplementation on aerobic power and cardiovascular structure and function. *J. Sci. Med. Sport* **2005**, *8*, 305–313. [\[CrossRef\]](#)
161. Arazi, H.; Rahmaninia, F.; Hosseini, K.; Asadi, A. Effects of short term creatine supplementation and resistance exercises on resting hormonal and cardiovascular responses. *Sci. Sports* **2015**, *30*, 105–109. [\[CrossRef\]](#)
162. Karamat, F.A.; Horjus, D.L.; Haan, Y.C.; van der Woude, L.; Schaap, M.C.; Oudman, I.; Van Montfrans, G.A.; Nieuwland, R.; Salomons, G.S.; Clark, J.F.; et al. The acute effect of beta-guanidinopropionic acid

- versus creatine or placebo in healthy men (ABC-Trial): A randomized controlled first-in-human trial. *Br. J. Clin. Pharmacol.* **2017**, *83*, 2626–2635. [[CrossRef](#)]
163. Horjus, D.L.; Oudman, I.; van Montfrans, G.A.; Brewster, L.M. Creatine and creatine analogues in hypertension and cardiovascular disease. *Cochrane Database Syst. Rev.* **2011**, *2011*. [[CrossRef](#)]
164. Branch, J.D. Effect of creatine supplementation on body composition and performance: A meta-analysis. *Int. J. Sport Nutr. Exerc. Metab.* **2003**, *13*, 198–226. [[CrossRef](#)]
165. Duffy, J.M.; Hirsch, M.; Peeling, L.; Showell, M.; Khan, K.S.; Ziebland, S.; McManus, R.; Hooft, J.; Gale, C.; Brown, M.; et al. Inadequate safety reporting in pre-eclampsia trials: a systematic evaluation. *BJOG Int. J. Obstet. Gynaecol.* **2018**, *125*, 795–803. [[CrossRef](#)] [[PubMed](#)]
166. Bent, S.; Padula, A.; Avins, A.L. Brief Communication: Better Ways To Question Patients about Adverse Medical Events. *Ann. Intern. Med.* **2006**, *144*, 257–261. [[CrossRef](#)] [[PubMed](#)]
167. Raglin, J.S.; Szabo, A.; Lindheimer, J.B.; Beedie, C. Understanding placebo and nocebo effects in the context of sport: A psychological perspective. *Eur. J. Sport Sci.* **2020**, *20*, 293–301. [[CrossRef](#)]
168. Planès, S.; Villier, C.; Mallaret, M. The nocebo effect of drugs. *Pharmacol. Res. Perspect.* **2016**, *4*. [[CrossRef](#)]
169. Vadeboncoeur, C.; Townsend, N.; Foster, C. A meta-analysis of weight gain in first year university students: Is freshman 15 a myth? *BMC Obes.* **2015**, *2*, 22. [[CrossRef](#)] [[PubMed](#)]
170. Tobias, D.K.; Chen, M.; Manson, J.E.; Ludwig, D.S.; Willett, W.; Hu, F.B. Effect of low-fat diet interventions versus other diet interventions on long-term weight change in adults: A systematic review and meta-analysis. *Lancet Diabetes Endocrinol.* **2015**, *3*, 968–979. [[CrossRef](#)]



© 2020 by the authors. Licensee MDPI, Basel, Switzerland. This article is an open access article distributed under the terms and conditions of the Creative Commons Attribution (CC BY) license (<http://creativecommons.org/licenses/by/4.0/>).